

#### KEY/LEGEND



SSDA BOUNDARY LINE



NSW Health Infrastructure  
AGING CONTRACTOR

PROJECT MANAGERS  
RE  
L 02 9333 3333  
HITECT  
N Architecture  
L 02 8297 7200

OR  
L 02 9438 5098  
HANICAL

02 9320 9320

---

ELECTRICAL / COMMS

02 9437 1000  
RAULIC  
UP  
02 0320 0320

ENGINEERING  
UP  
L 02 9320 9320

CADIA  
L 02 8571 2900  
/ DDA

02 9211 7777

PEAN HOSPITAL - STAGE 2

RBY ST  
 GSWOOD NSW 2747  
 PEAN  
 PROJECT NUMBER  
 13020.000  
 DRAWING KEY

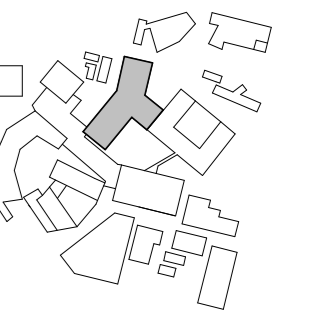


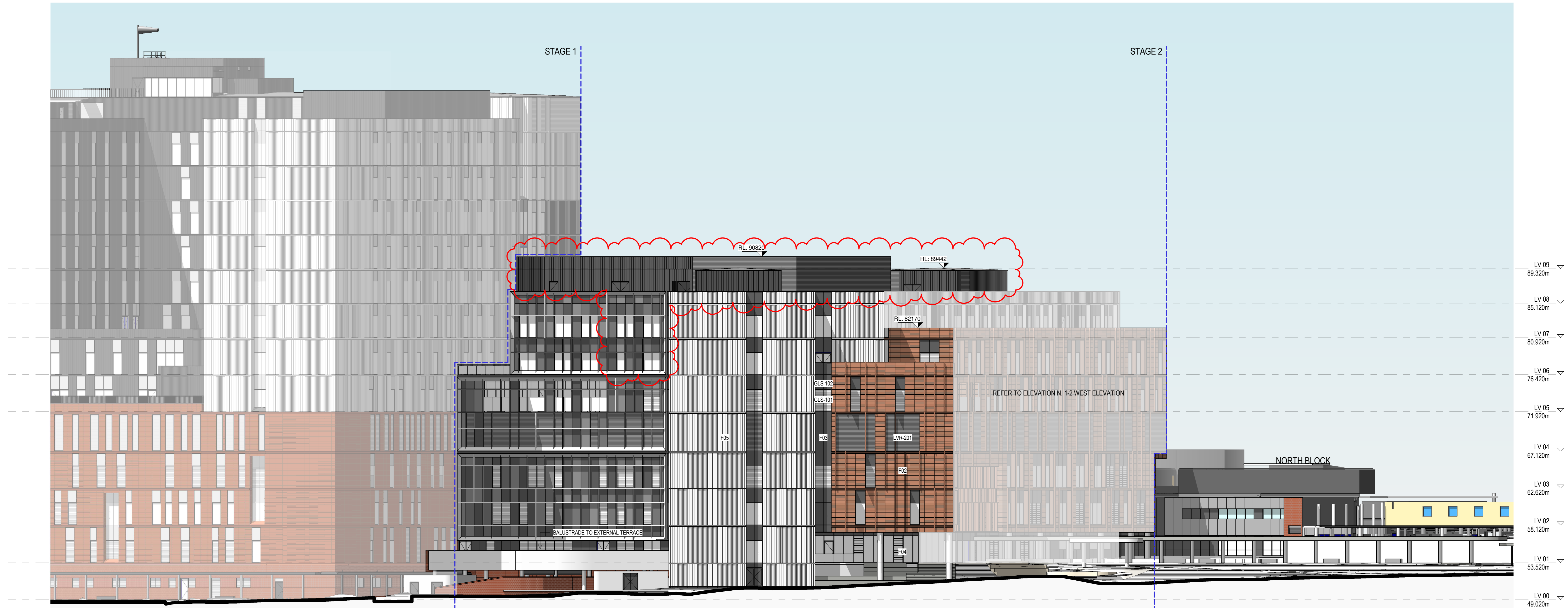
TABLE 1  
DO NOT SCALE

1000 4000 8000

IN BY: - CHECKED BY: -  
 DATED BY: - APPROVED BY: -  
 TUS  
 DA  
 WING

ACADE ELEVATION -  
NORTH ELEVATION

WING NUMBER	ISSUE
R-BVN-DRW-ARC-TB2- D-301	C



1 FACADE - NORTH ELEVATION - GENERAL ARRANGEMENT  
1 : 200

## FACADE TYPES

**F01** - Natural masonry / brick. Varied format and orientation of units to create texture and visual relief on facade.

**F02 - Substrate on Steel Frame with Terracotta (Natural) Tile system. Facade depth varies to create visual relief.**

**F03** - Window wall system. Mixture transparent glazing panel & colourback glazing depending on location.

**F04 -** Shopfront glazing system with structural mullions. Operable DGU louvres for mixed mode ventilation.

**F05** - Substrate on Steel Frame prefinished metal cladding. Mixture of "Profile" and "Flat" metal cladding.

**F06 - Substrate on Steel Frame prefinished aluminium cassette cladding. Sunshade louvre system integrated**

**F07 - Sunshade terracotta louvre system with integrated hook system.**

**F08 - Substrate on Steel Frame prefinished compressed fibre cement cladding.**

### GLAZING TYPES

**GLS-101** Transparent glazing.  
**GLS-102** Colourback glazing Dark Grey.

## LOUVRE TYPES

**LVR-201** Horizontal metal louvres - Dark Grey