

TE:  
FER TO CIVIL AND LANDSCAPE PACKAGE  
R ALL THE EXTERNAL WORKS. INTENT  
OWN ON ARCHITECTURAL DRAWINGS  
E INDICATIVE ONLY.

SSDA BOUNDARY LINE



NSW Health Infrastructure  
AGING CONTRACTOR

ECT MANAGERS  
 RE  
 02 9333 3333  
 INTCT  
 N Architecture  
 02 8297 7200  
 UCTURE / CIVIL  
 02 9438 5098  
 OR  
 02 9320 9320  
 ANICAL  
 LP  
 02 9320 9320  
 CTICAL / COMMS  
 A  
 02 9437 1000  
 RAILIC  
 LP  
 02 9320 9320  
 ENGINEERING  
 LP  
 02 9320 9320  
 OSCAPE  
 CADIA  
 02 8571 2900  
 DDA  
 ACKETT MAGUIRE + GOLDSMITH  
 02 9211 7777

PROJECT  
PEAN HOSPITAL - STAGE 2  
RBY ST  
IGSWOOD NSW 2747  
PEAN  
PROJECT NUMBER  
13020.000  
DRAWING KEY

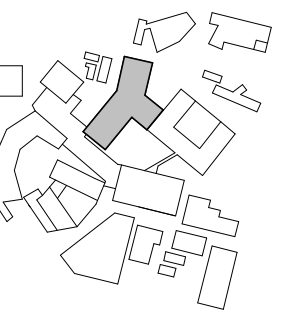


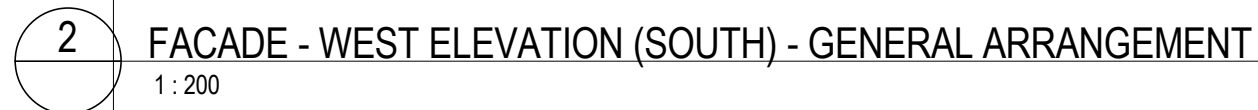
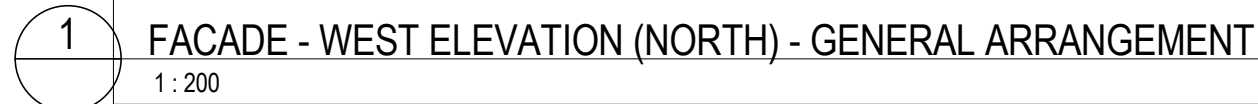
TABLE 1  
DO NOT SCALE

1000 4000 8000

DESIGNED BY: \_\_\_\_\_ APPROVED BY: \_\_\_\_\_  
TUS  
DA  
WING

ACADE ELEVATION -  
BEST ELEVATION

|                             |       |
|-----------------------------|-------|
| WING NUMBER                 | ISSUE |
| R-BVN-DRW-ARC-TB2-<br>D-303 | C     |



F01 - Natural masonry / brick. Varied format and orientation of units to create texture and visual relief on facade.

F02 - Substrate on Steel Frame with Terracotta (Natural) Tile system. Facade depth varies to create visual relief.

F03 - Window wall system. Mixture transparent glazing panel & colourback glazing depending on location.

F04 - Shopfront glazing system with structural mullions. Operable DGU louvres for mixed mode ventilation.

**F05** - Substrate on Steel Frame prefinished metal cladding. Mixture of "Profile" and "Flat" metal cladding.

**F06** - Substrate on Steel Frame prefinished aluminium cassette cladding. Sunshade louver system integrated.

**F07** - Sunshade terracotta louver system with integrated hook system.

**F08** - Substrate on Steel Frame prefinished compressed fibre cement cladding.

**GLS-101** Transparent glazing.  
**GLS-102** Colourback glazing Dark Grey.

**LVR-201** Horizontal metal louveres - Dark Grey