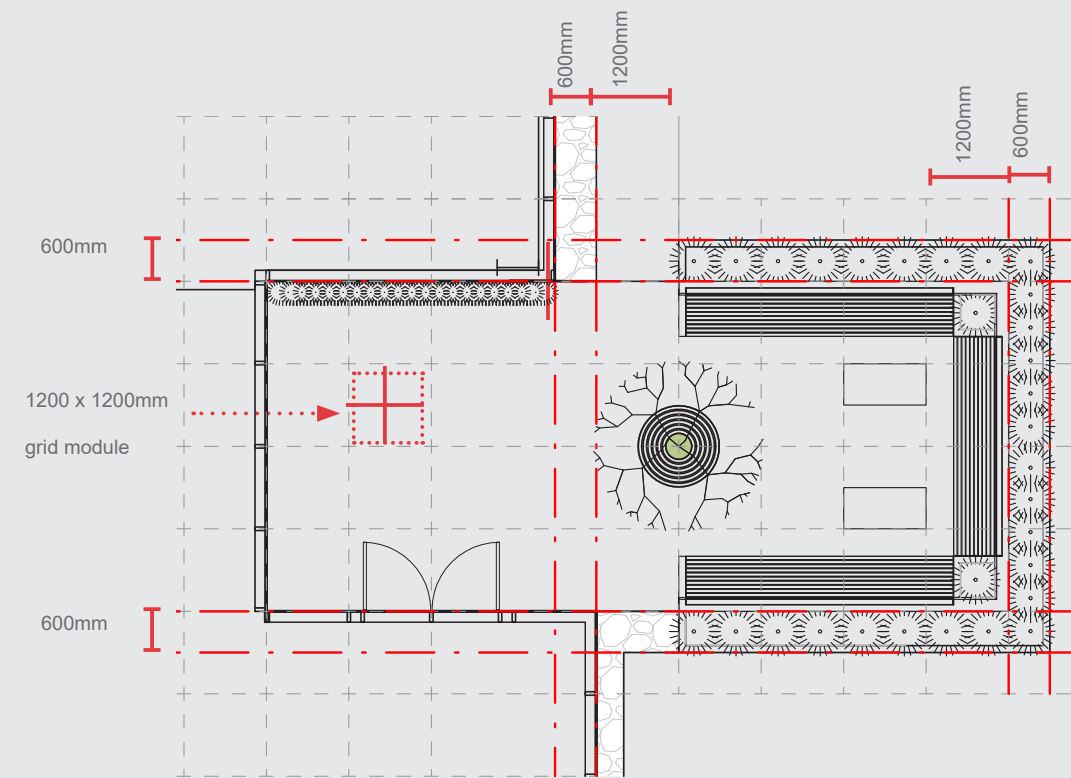


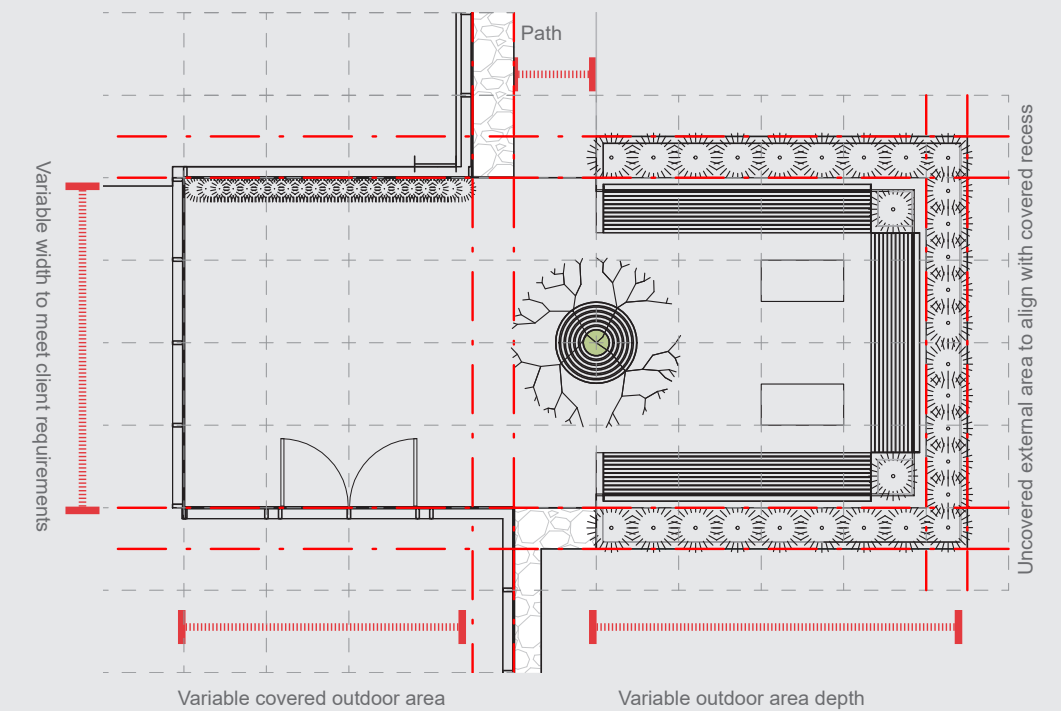
Staff External Area

2.6.1 Set Out

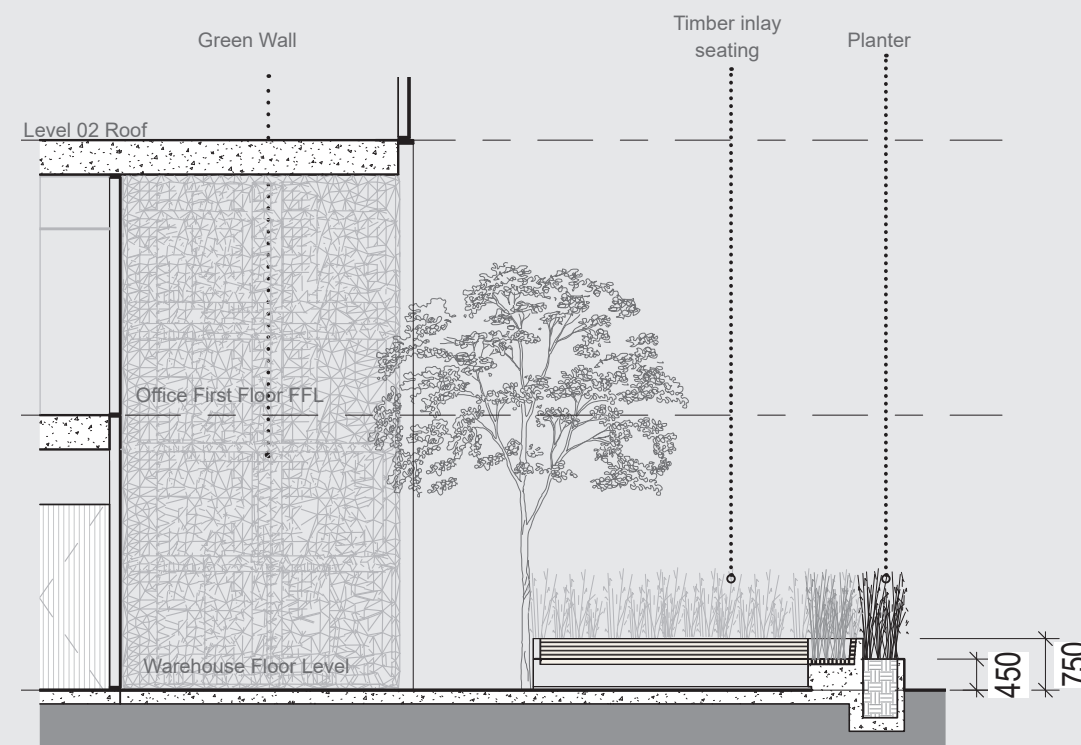
Staff External Area Set Out



Set Out Drawing



Scaling Principles



Section



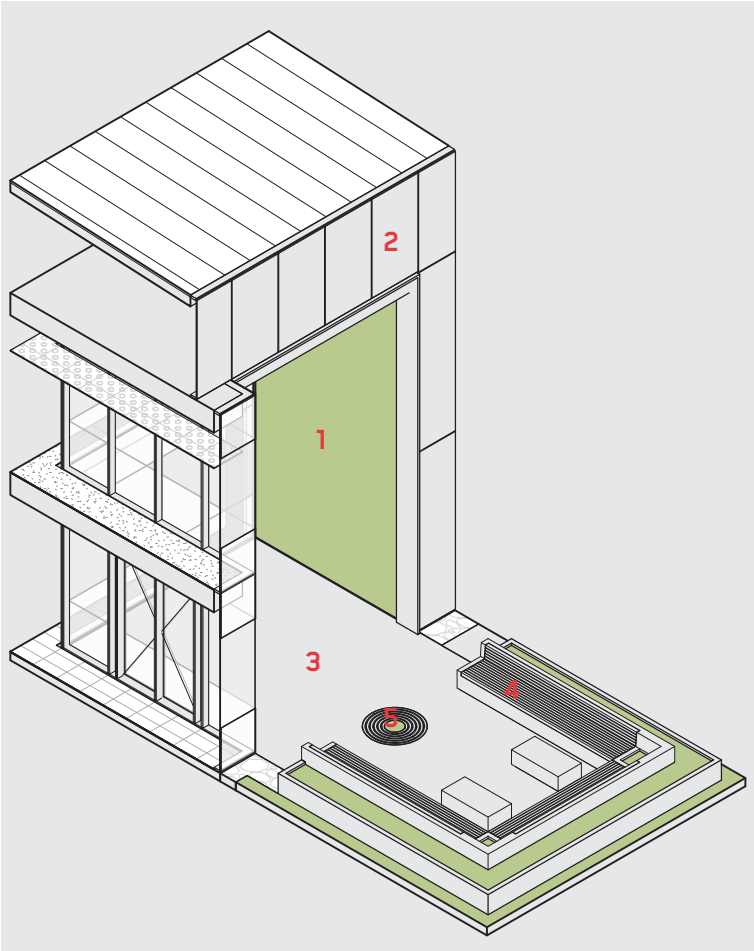
Perspective

Staff External Area
2.6.2 Materials

Staff External Materials
The outdoor staff area is designed to follow the same grid arrangement as per internal spaces. This 1200mm module enables scaling to meet client requirements whilst maintaining a coherent aesthetic.

There are four elements in the outdoor area:

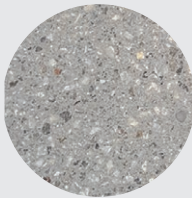
- A focal tree
- Modular seating
- Regional vegetation
- Covered building recess



1. Green wall



2. Aluminum sheeting



3. G2 Alloy Blasted finish paver or similar 400 x 600mm



4. Accoya seating



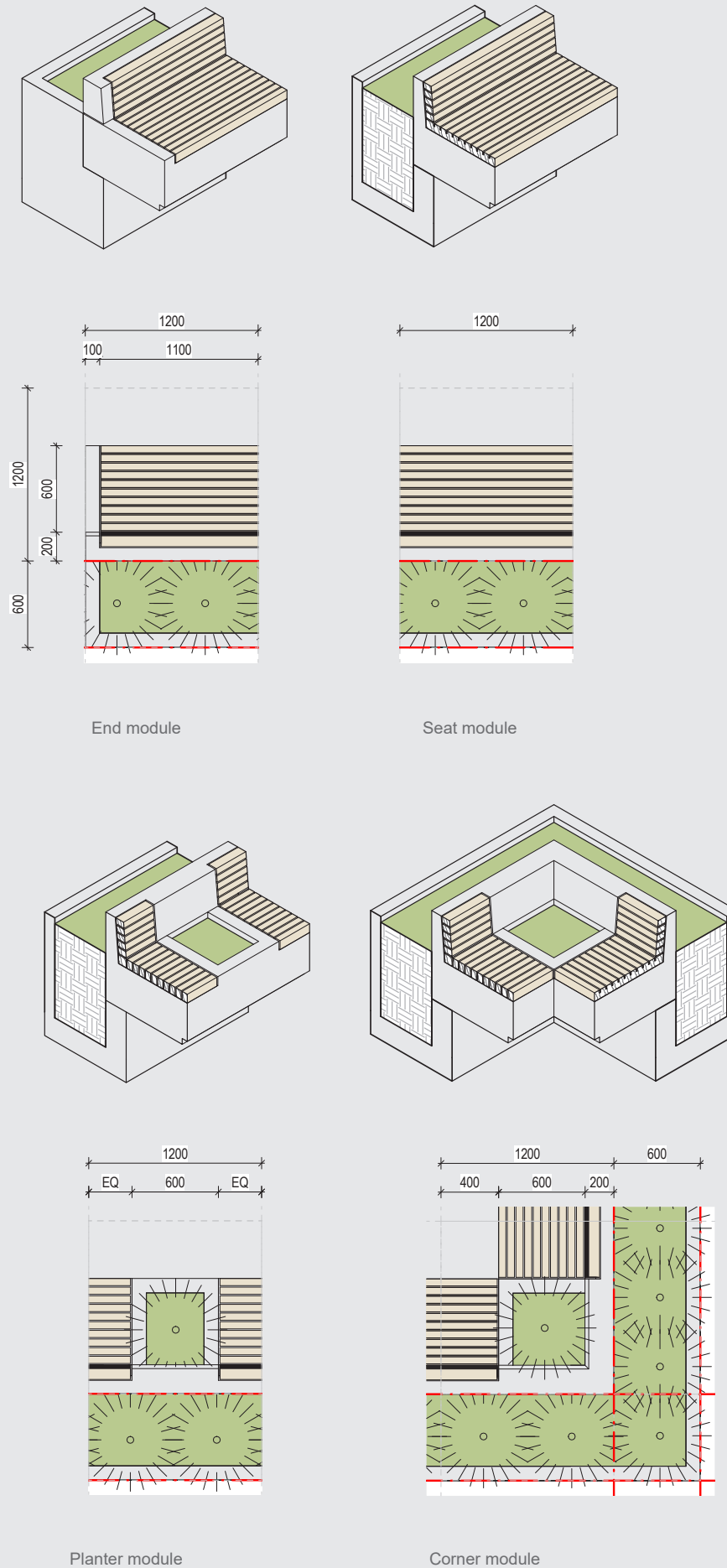
5. 1200mm DIA tree grate

Staff External Area

2.6.3 Kit of Parts

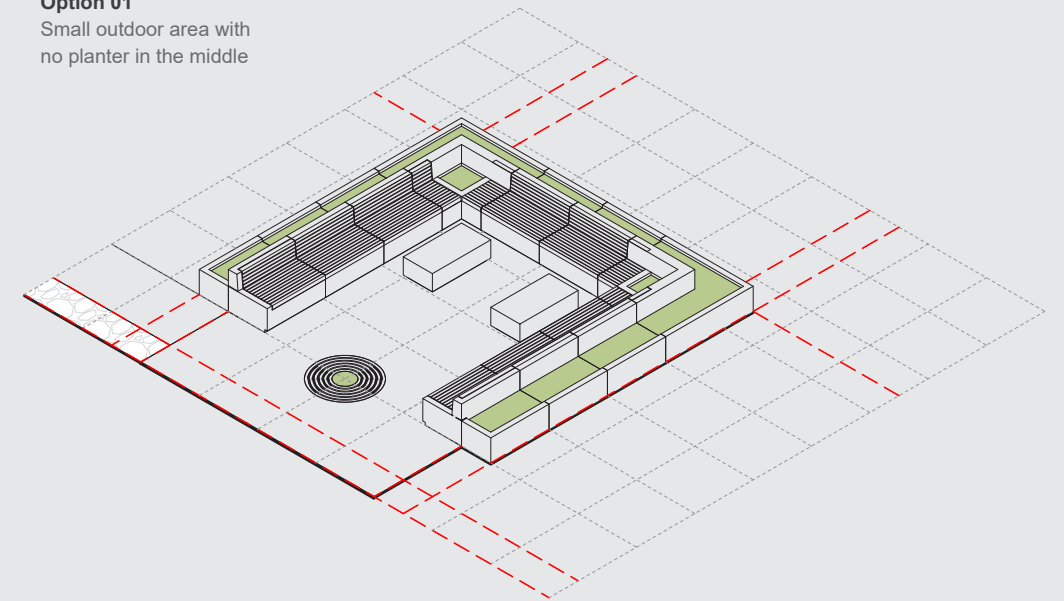
Kit of Parts

The seating kit of parts allows the design team to respond to diverse client requirements. Each module is 1200mm wide x 1800mm deep including a 600mm planter section. By rearranging these elements, it is possible to create small, medium + large outdoor seating areas.



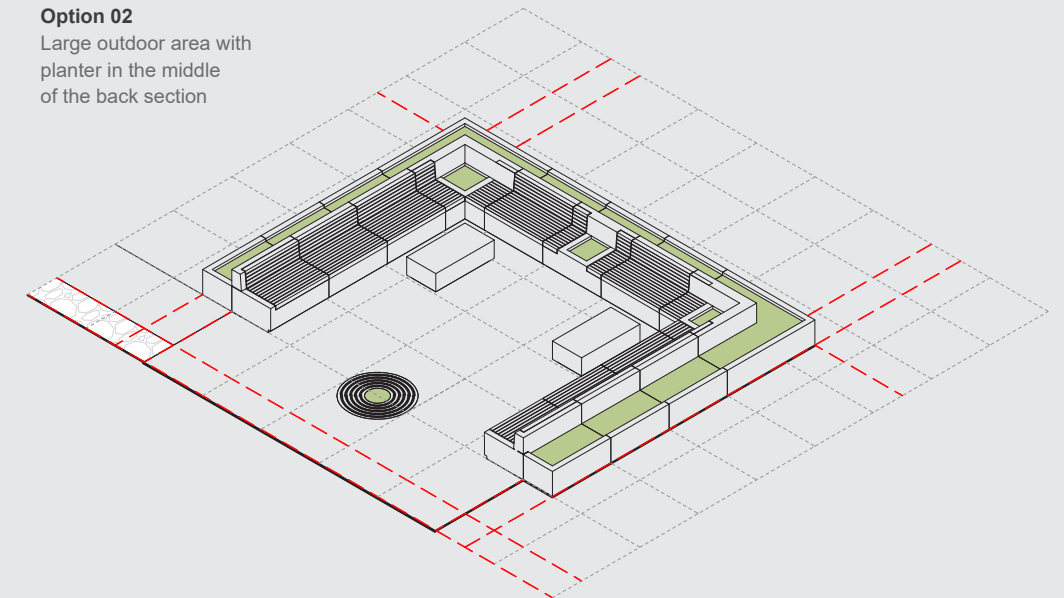
Option 01

Small outdoor area with no planter in the middle



Option 02

Large outdoor area with planter in the middle of the back section



Option 03

Large outdoor area with planter in the middle of all sections

