

# ARDEX WAREHOUSE

## THE YARDS, KEMPS CREEK, NSW

LANDSCAPE CONCEPT PLAN  
14.07.2022  
DA SUBMISSION  
ISSUE G



DRAWING LIST:

- L-01 Coversheet
- L-02 Estate Landscape Area
- L-03 Landscape Masterplan
- L-04 Landscape Concept Plan 01
- L-05 Landscape Concept Plan 02
- L-06 Landscape Concept Plan 03
- L-07 Landscape Concept Plan 04
- L-08 Landscape Detail Plan
- L-09 Landscape Section A-A
- L-10 Landscape Section B-B
- L-11 Planting Strategy
- L-12 Typical Specification & Maintenance Notes
- L-13 Typical Landscape Details



**Canopy Tree Offset  
Commitment**

When this symbol appears on the drawing, Habit8 with our selected nursery partner will donate 5 x 300mm pot size endemic canopy trees to the local Landcare group in the LGA. This initiative is a joint commitment with landscape architect and client in providing local tree canopy cover to help mitigate the urban heat island effect while increasing local biodiversity values.



**FRASERS  
PROPERTY**



**ALTIS**  
PROPERTY PARTNERS

LANDSCAPE ARCHITECT:



**HABIT8**  
Landscape Architecture & Urbanism

Level 57, MLC Centre 32/24 Scott St,  
19-29 Martin Place, Byron Bay, NSW 2481  
Sydney, NSW 2000

www.habit8.com.au  
M: 0425 206 047




## ESTATE LANDSCAPE AREA



**KEY:**

- |   |   |                  |
|---|---|------------------|
|    | <b>SITE BOUNDARY</b>  |                  |
|    | <b>THE YARDS KEMPS CREEK MODIFICATION 3</b><br>Landscape Area: 20,213 m <sup>2</sup> or 1.71% |                  |
|    | <b>THE YARDS LOT 14 PROBIOTEC</b><br>Landscape Area: 4,949.34 m <sup>2</sup> or 0.42%         |                  |
|    | <b>THE YARDS LOT 11</b><br>Landscape Area: 2,009.91 m <sup>2</sup> or 0.17%                   |                  |
|    | <b>KEMPS CREEK ARDEX</b><br>Landscape Area: 4,980 m <sup>2</sup> or 0.42%                     |                  |
|    | <b>THE YARDS MOD 4 LOT 6</b><br>Landscape Area: 3,403.28 m <sup>2</sup> or 0.29%              |                  |
|   | <b>LOT 9 KEMPS CREEK</b><br>Landscape Area: 3,589 m <sup>2</sup> or 0.30%                     |                  |
|  | <b>TTI THE YARDS</b><br>Landscape Area: 13,789 m <sup>2</sup> or 1.17%                        |                  |
|  | <b>SYD03 DATA CENTRE (FOR MICROSOFT)</b><br>Landscape Area: 23,097 m <sup>2</sup> or 1.96%    |                  |
|  | <b>FUTURE DEVELOPMENT (WAREHOUSE 8)</b><br>Landscape Area: 4,895 m <sup>2</sup> or 0.41%      |                  |
|  | <b>RE1 &amp; RE2 LAND</b><br>Landscape Area: 80,024 m <sup>2</sup> or 6.78%                   |                  |
|  | <b>THE YARDS ESTATE (STREETSCAPE)</b><br>Landscape Area: 40,365 m <sup>2</sup> or 3.42%       |                  |
|  | <b>STAGE 1 LOTS 3, 4 &amp; 5</b><br>Landscape Area: 272,642m <sup>2</sup> or 23.11%           |                  |
| <b>TOTAL ESTATE LANDSCAPING (m<sup>2</sup>)</b>                                       |   | <b>562,738</b>   |
| <b>TOTAL ESTATE AREA (m<sup>2</sup>)</b>  |   | <b>1,179,627</b> |
| <b>TOTAL ESTATE LANDSCAPING (%)</b>   |   | <b>47.70%</b>    |
|  | <b>SOUTH LINK ROAD</b><br>26,911 m <sup>2</sup>   |                  |
|  | <b>FREIGHT ROAD CORRIDOR</b><br>33,224 m <sup>2</sup>   |                  |
|  | <b>MAMRE ROAD DEDICATION</b><br>26,050 m <sup>2</sup>   |                  |

PROJECT	DRAWING TITLE	PROJECT NO.	PURPOSE	SCALE	REVISION	DATE	DRAWN	CHECKED	PAGE	CLIENT
ARDEX WAREHOUSE THE YARDS, KEMPS CREEK NSW	ESTATE LANDSCAPE AREA	H8-21023	COUNCIL SUBMISSION	1:5000 @A3	G	14.07.2022	KM/DG	DV	L02	



Level 57, MLC Centre  
19-29 Martin Place,  
Sydney, NSW 2000

32/24 Scott St,  
Byron Bay, NSW 2481

www.habit8.com.au  
M: 0425 206 047

**HABIT8**  
Landscape Architecture & Urbanism



LANDSCAPE MASTERPLAN



CONTEXT PLAN

KEY

- SITE BOUNDARY
- - - SECURITY FENCE TO ARCHITECT'S DETAILS
- - - RETAINING WALL TO ENGINEER'S DETAILS
- PROPOSED TREE PLANTING REFER TO PLANT SCHEDULE
- TURF REFER TO DETAIL
- MASS PLANTING BEDS REFER TO DETAIL AND PLANT SCHEDULE
- CONCRETE SURFACE TO ENGINEER'S DETAILS
- PAVED SURFACE TO ARCHITECT'S DETAILS
- PERVIOUS SURFACE TO ARCHITECT'S DETAILS

TREE CANOPY COVER

TREE NO.	TREE CANOPY	CANOPY AREA (m²)	TOTAL CANOPY COVER (m²)
122	3m	7	854
36	6m	30	1080
31	8m	50	1550
13	10m	78	1014

ARDEX TOTAL AREA 43,682  
TOTAL TREE NO. 202  
TOTAL SQM CANOPY COVER 4,498  
TOTAL CANOPY PERCENTAGE 10.29%  
DCP REQUIREMENT 10%

PERMEABLE AREA: 4196.64 m² / 2,098 m² (50%)  
LANDSCAPE PLANTING AREA: 2,882 m²  
TOTAL PERMEABLE LANDSCAPE AREA: 4,980 m²  
TOTAL LANDSCAPE PERMEABILITY PERCENTAGE: 11%  
DCP REQUIREMENT 15%

DESIGN NOTES

1. LANDSCAPE SETBACK
  2. FOOTPATH & STREET TREES PART OF SEPARATE DOCUMENTATION SET
  3. TRUCK ENTRY
  4. TRUCK EXIT
  5. OUTDOOR AREA WITH TREE IN PLANTER BOX
  6. MOUNTABLE KERB
  7. CAR PARKING
  8. BIKE RACKS TO ARCHITECT'S DETAILS
  9. CAR ENTRY / EXIT
  10. BOUNDARY PLANTING
  11. FEATURE ENTRY TREE IN PAVEMENT
12. ESTATE IDENTIFICATION SIGNAGE (PRIMARY) TO ARCHITECT'S DETAILS
  13. ESTATE IDENTIFICATION SIGNAGE (SECONDARY) TO ARCHITECT'S DETAILS
  14. BUILDING IDENTIFICATION SIGNAGE TO ARCHITECT'S DETAILS
  15. ESTATE NAVIGATION SIGNAGE TO ARCHITECT'S DETAILS



LANDSCAPE CONCEPT PLAN 01



KEY

SITE BOUNDARY

SECURITY FENCE  
TO ARCHITECT'S DETAILS

RETAINING WALL  
TO ENGINEER'S DETAILS

PROPOSED TREE PLANTING  
REFER TO PLANT SCHEDULE

TURF  
REFER TO DETAIL

MASS PLANTING BEDS  
REFER TO DETAIL AND PLANT  
SCHEDULE

CONCRETE SURFACE  
TO ENGINEER'S DETAILS

PAVED SURFACE TO ARCHITECT'S  
DETAILS

PERVIOUS SURFACE TO ARCHITECT'S  
DETAILS



KEYPLAN

DESIGN NOTES

- LANDSCAPE SETBACK
- FOOTPATH & STREET TREES PART OF SEPARATE DOCUMENTATION SET
- TRUCK ENTRY
- TRUCK EXIT
- OUTDOOR AREA WITH TREE IN PLANTER BOX
- MOUNTABLE KERB
- CAR PARKING
- BIKE RACKS TO ARCHITECT'S DETAILS
- CAR ENTRY / EXIT
- BOUNDARY PLANTING
- FEATURE ENTRY TREE IN PAVEMENT
- ESTATE IDENTIFICATION SIGNAGE (PRIMARY) TO ARCHITECT'S DETAILS
- ESTATE IDENTIFICATION SIGNAGE (SECONDARY) TO ARCHITECT'S DETAILS
- BUILDING IDENTIFICATION SIGNAGE TO ARCHITECT'S DETAILS
- ESTATE NAVIGATION SIGNAGE TO ARCHITECT'S DETAILS



LANDSCAPE CONCEPT PLAN 02



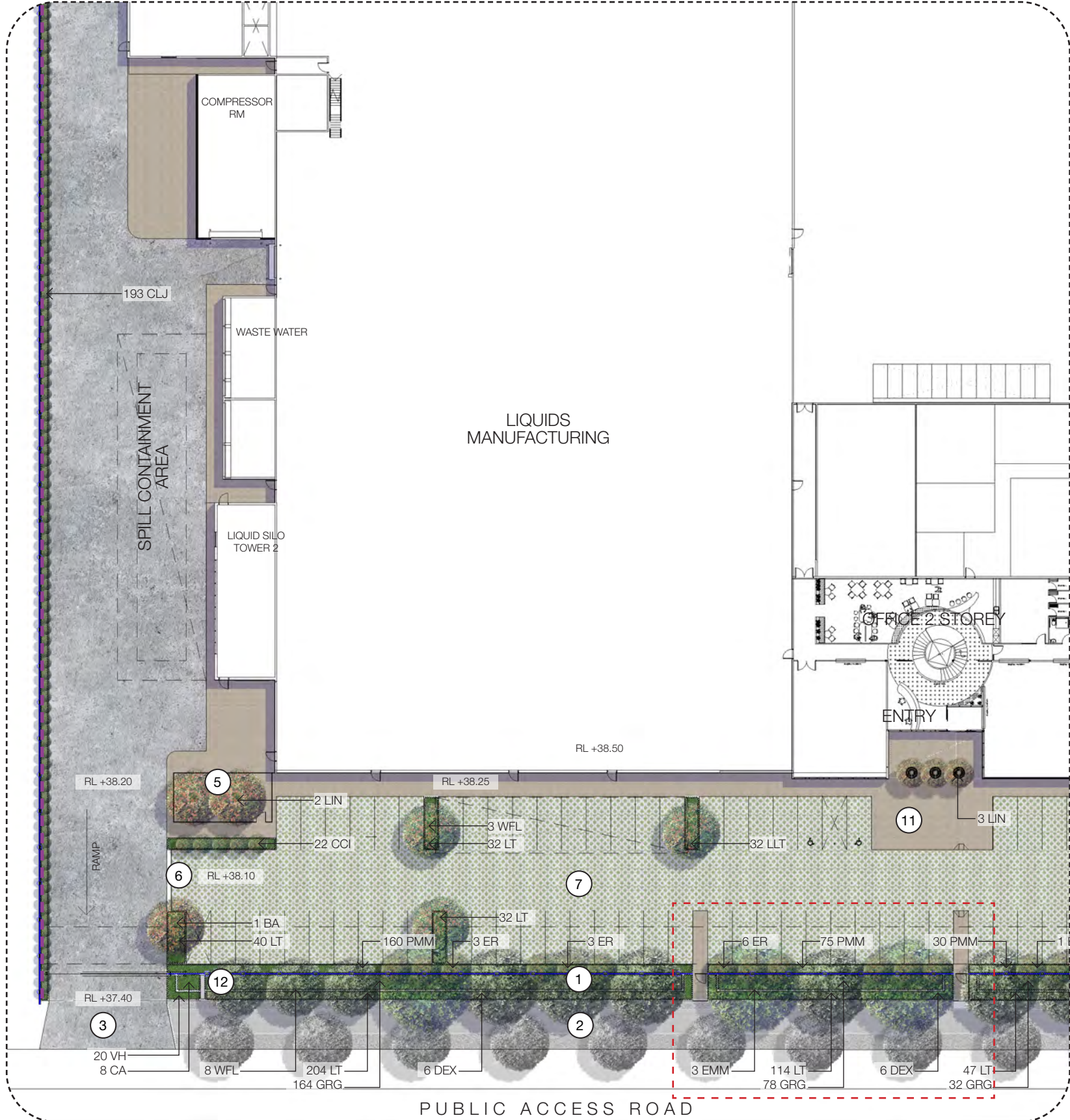
**KEY**

- SITE BOUNDARY
- SECURITY FENCE TO ARCHITECT'S DETAILS
- RETAINING WALL TO ENGINEER'S DETAILS
- PROPOSED TREE PLANTING REFER TO PLANT SCHEDULE
- TURF REFER TO DETAIL
- MASS PLANTING BEDS REFER TO DETAIL AND PLANT SCHEDULE
- CONCRETE SURFACE TO ENGINEER'S DETAILS
- PAVED SURFACE TO ARCHITECT'S DETAILS
- PERVIOUS SURFACE TO ARCHITECT'S DETAILS

- DESIGN NOTES**
- LANDSCAPE SETBACK
  - FOOTPATH & STREET TREES PART OF SEPARATE DOCUMENTATION SET
  - TRUCK ENTRY
  - TRUCK EXIT
  - OUTDOOR AREA WITH TREE IN PLANTER BOX
  - MOUNTABLE KERB
  - CAR PARKING
  - BIKE RACKS TO ARCHITECT'S DETAILS
  - CAR ENTRY / EXIT
  - BOUNDARY PLANTING
  - FEATURE ENTRY TREE IN PAVEMENT
  - ESTATE IDENTIFICATION SIGNAGE (PRIMARY) TO ARCHITECT'S DETAILS
  - ESTATE IDENTIFICATION SIGNAGE (SECONDARY) TO ARCHITECT'S DETAILS
  - BUILDING IDENTIFICATION SIGNAGE TO ARCHITECT'S DETAILS
  - ESTATE NAVIGATION SIGNAGE TO ARCHITECT'S DETAILS



# LANDSCAPE CONCEPT PLAN 03



## KEY

-  SITE BOUNDARY  
TO ARCHITECT'S DETAILS
  -  SECURITY FENCE  
TO ARCHITECT'S DETAILS
  -  RETAINING WALL  
TO ENGINEER'S DETAILS
  -  PROPOSED TREE PLANTING  
REFER TO PLANT SCHEDULE
  -  TURF  
REFER TO DETAIL
  -  MASS PLANTING BEDS  
REFER TO DETAIL AND PLANT  
SCHEDULE
  -  CONCRETE SURFACE  
TO ENGINEER'S DETAILS
  -  PAVED SURFACE TO ARCHITECT'S  
DETAILS
  -  PERVIOUS SURFACE TO ARCHITECT'S  
DETAILS

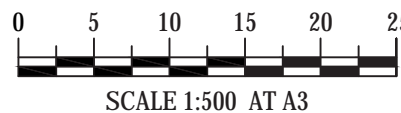


## KEYPLAN

## DESIGN NOTES

1. LANDSCAPE SETBACK
2. FOOTPATH & STREET TREES PART OF SEPARATE DOCUMENTATION SET
3. TRUCK ENTRY
4. TRUCK EXIT
5. OUTDOOR AREA WITH TREE IN PLANTER BOX
6. MOUNTABLE KERB
7. CAR PARKING
8. BIKE RACKS TO ARCHITECT'S DETAILS
9. CAR ENTRY / EXIT
10. BOUNDARY PLANTING
11. FEATURE ENTRY TREE IN PAVEMENT
12. ESTATE IDENTIFICATION SIGNAGE (PRIMARY)  
TO ARCHITECT'S DETAILS
13. ESTATE IDENTIFICATION SIGNAGE (SECONDARY)  
TO ARCHITECT'S DETAILS
14. BUILDING IDENTIFICATION SIGNAGE  
TO ARCHITECT'S DETAILS
15. ESTATE NAVIGATION SIGNAGE  
TO ARCHITECT'S DETAILS

PROJECT	DRAWING TITLE	PROJECT NO.	PURPOSE	SCALE	REVISION	DATE	DRAWN	CHECKED	PAGE
ARDEX WAREHOUSE THE YARDS, KEMPS CREEK NSW	LANDSCAPE CONCEPT PLAN 03	H8-21023	COUNCIL SUBMISSION	1:500 @A3	G	14.07.2022	KM/DG	DV	L06



Level 57, MLC Centre  
29 Martin Place,  
Sydney, NSW 2000

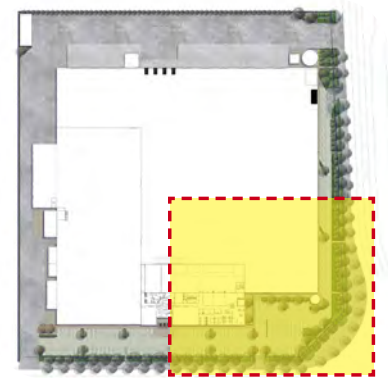
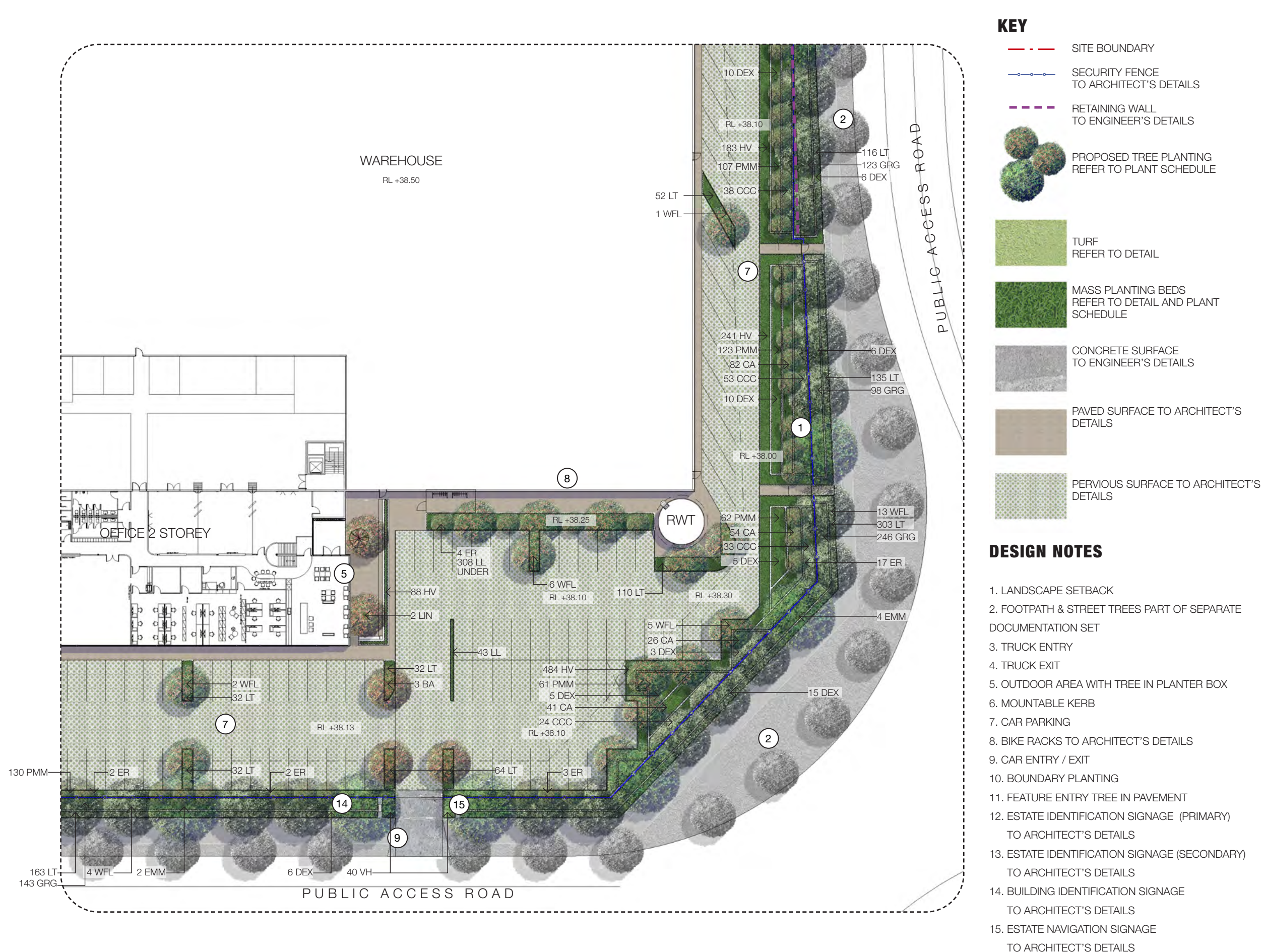
1/24 Scott St,  
Port Macquarie, NSW 2481

www.habit8.com.au  
0425 206 047

**HABIT8**  
Landscape Architecture & Urbanism



# LANDSCAPE CONCEPT PLAN 04

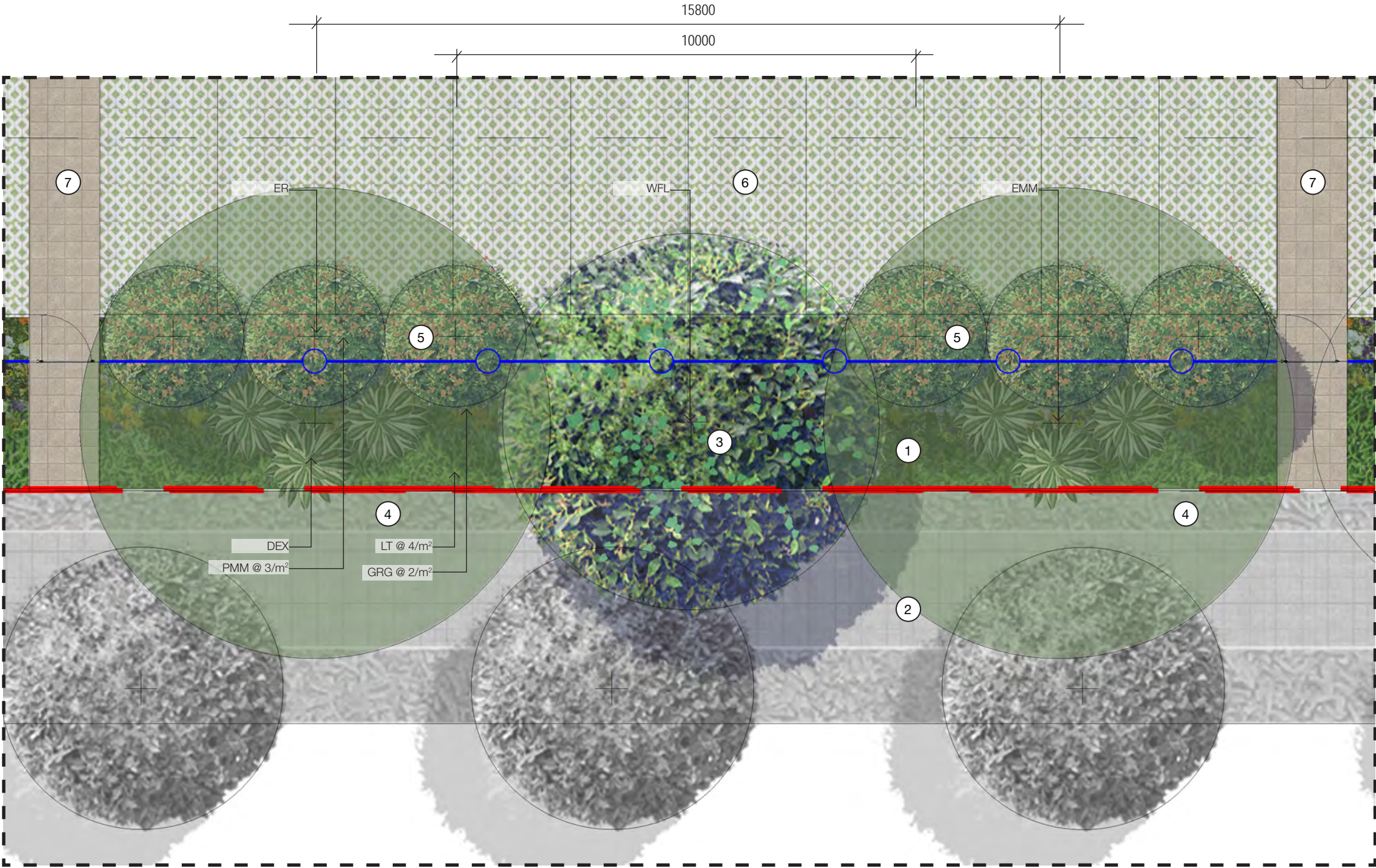


## KEYPLAN

- # DESIGN NOTES
1. LANDSCAPE SETBACK
  2. FOOTPATH & STREET TREES PART OF SEPARATE DOCUMENTATION SET
  3. TRUCK ENTRY
  4. TRUCK EXIT
  5. OUTDOOR AREA WITH TREE IN PLANTER BOX
  6. MOUNTABLE KERB
  7. CAR PARKING
  8. BIKE RACKS TO ARCHITECT'S DETAILS
  9. CAR ENTRY / EXIT
  10. BOUNDARY PLANTING
  11. FEATURE ENTRY TREE IN PAVEMENT
  12. ESTATE IDENTIFICATION SIGNAGE (PRIMARY)  
TO ARCHITECT'S DETAILS
  13. ESTATE IDENTIFICATION SIGNAGE (SECONDARY)  
TO ARCHITECT'S DETAILS
  14. BUILDING IDENTIFICATION SIGNAGE  
TO ARCHITECT'S DETAILS
  15. ESTATE NAVIGATION SIGNAGE  
TO ARCHITECT'S DETAILS



LANDSCAPE DETAIL PLAN



KEYPLAN

KEY

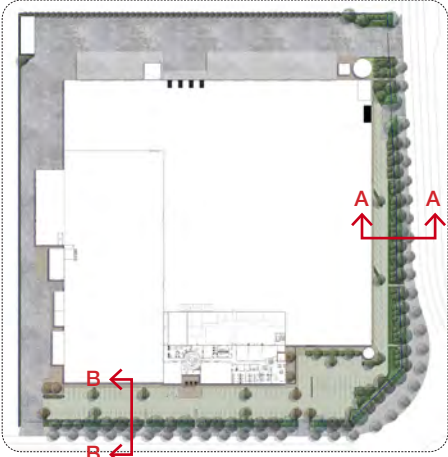
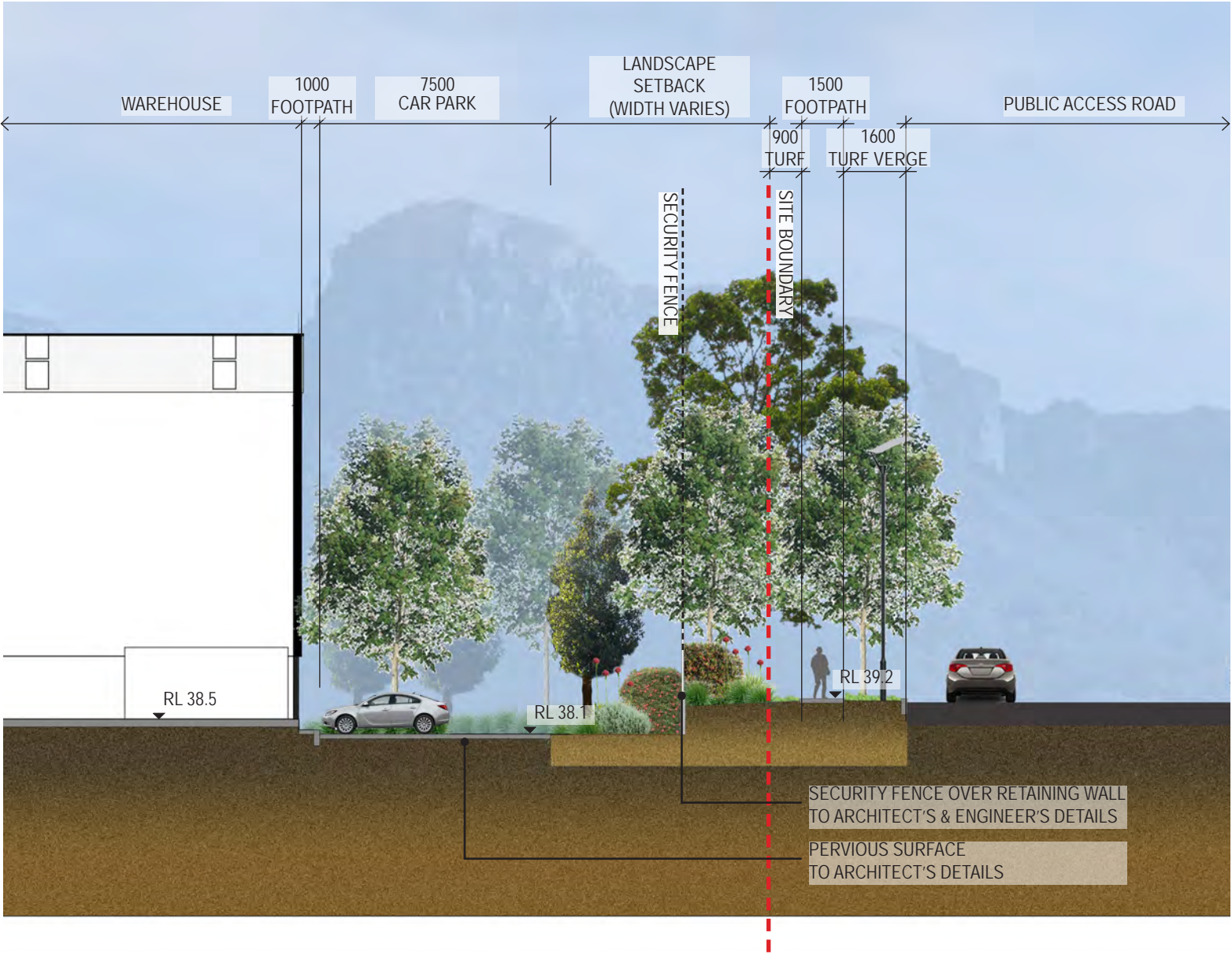
- SITE BOUNDARY
- SECURITY FENCE TO ARCHITECT'S DETAILS
- PROPOSED TREE PLANTING REFER TO PLANT SCHEDULE
- MASS PLANTING BEDS REFER TO DETAIL AND PLANT SCHEDULE
- PAVED SURFACE TO ARCHITECT'S DETAILS
- PERVIOUS SURFACE TO ARCHITECT'S DETAILS

DESIGN NOTES

- 1. LANDSCAPE SETBACK
- 2. FOOTPATH & STREET TREES PART OF SEPARATE DOCUMENTATION SET
- 3. PROPOSED CANOPY STREET TREES (8-10m ht +)
- 4. LARGE CANOPY TREES (10-20m ht)
- 5. SCREENING TREES (6m ht)
- 6. CARPARK
- 7. PEDESTRIAN ACCESS WITH GATE



LANDSCAPE SECTION A-A

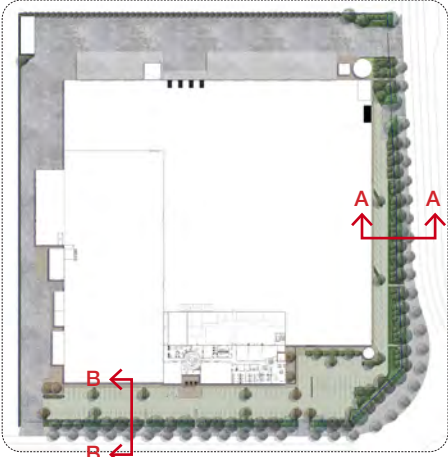


KEYPLAN

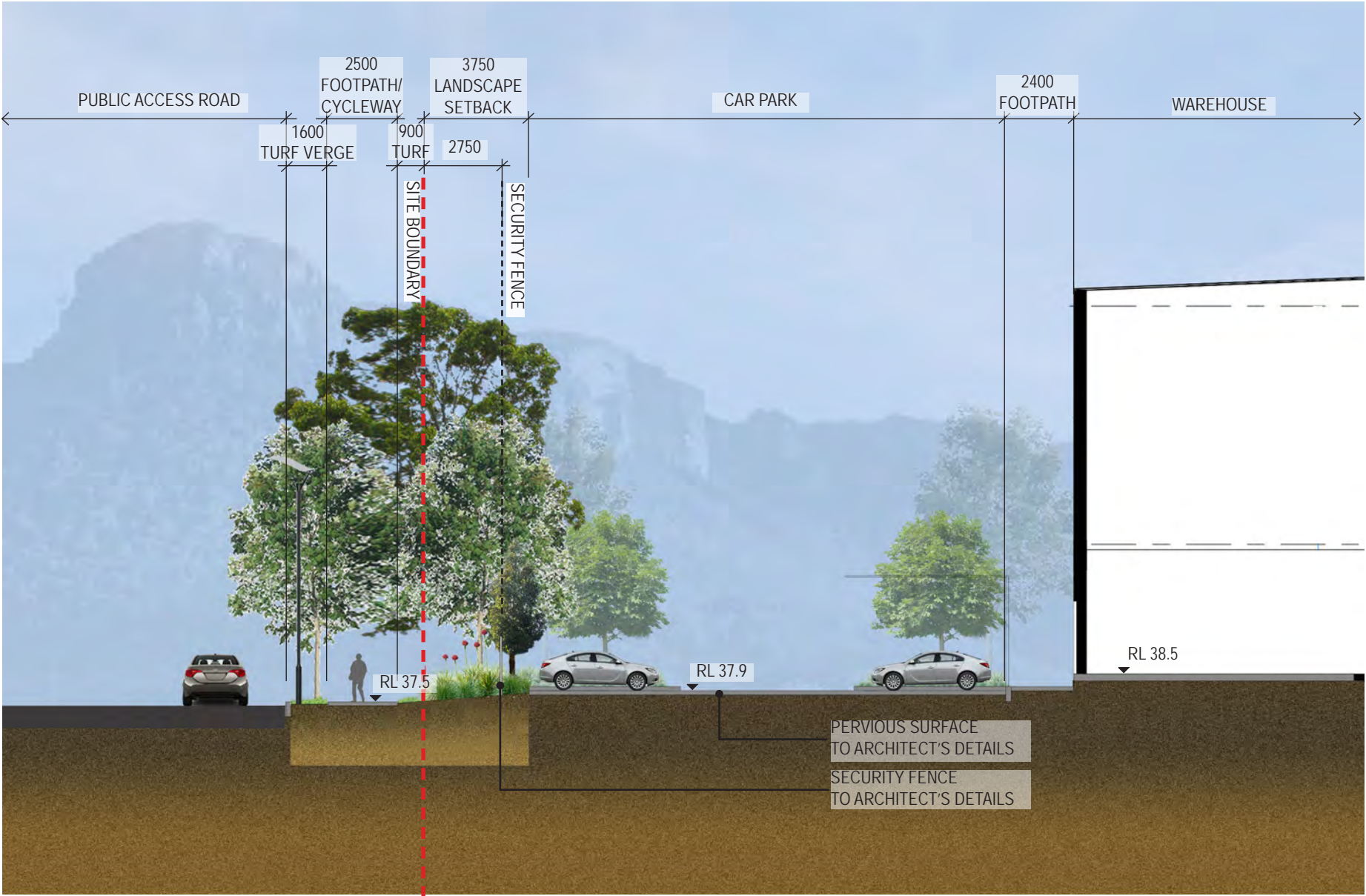
01 SECTION A-A  
Scale 1:200@A3 / 1:100@A1



# LANDSCAPE SECTION B-B



KEYPLAN



01 SECTION B-B  
Scale 1:200@A3 / 1:100@A1



# PROPOSED PLANT SCHEDULE

Plant species sourced from the Mamre Road DCP 2021 Appendix C Plant List

CODE	BOTANICAL NAME	HT IN POT (m)	POT SIZE	DENSITY	NOS.
TREES					
WFL	Waterhousea floribunda	2.5	100L	As Shown	52
AC	Angophora costata	2.0	100L	As Shown	1
ER	Elaeocarpus reticulatus	2.5	45L	As Shown	122
EMM	Eucalyptus moluccana	2.5	35L	As Shown	12
LIN	Lagerstroemia indica	2.5	100L	As Shown	11
BA	Brachychiton acerifolius	2.0	75L	As Shown	5
SHRUBS					
DEX	Doryanthes excelsa		200mm	1/m²	124
GRG	Grevillea 'Robyn Gordon'		150mm	2/m²	1149
CCC	Callistemon 'Captain Cook'		200mm	1/m²	251
CLJ	Callistemon 'Little John'		200mm	2/m²	415
CCI	Callistemon 'Citrinus'		200mm	2/m²	22
CA	Correa Alba		300mm	2/m²	345
PMM	Pittosporum 'Miss Muffet'		300mm	3/m²	1170
GROUNDCOVERS AND GRASSES					
LL	Lomandra longifolia		150mm	4/m²	351
LT	Lomandra longifolia 'Tanika'		150mm	4/m²	2205
HV	Hardenbergia violacea		150mm	4/m²	1590
VH	Viola hederacea		150mm	4/m²	96





# TYPICAL SPECIFICATION + MAINTENANCE NOTES

## SPECIFICATION NOTES

### SERVICES

Before landscape work is commenced the Landscape Contractor is to establish the position of all service lines and ensure tree planting is carried out at least 3 metres away from these services. Service lids, vents and hydrants shall be left exposed and not covered by any landscape finishes (turfing, paving, garden beds etc.) Finish adjoining surfaces flush with pit lids.

### PLANTING MIXTURE - (300mm DEPTH)

Imported Garden Mix.  
Type: Premium  
Available: Australian Native Landscapes (ANL)

### TURF SOIL MIX (150mm DEPTH)

Type: Turf underlay  
Available: Australian Native Landscapes (ANL)

### MULCH

APPLICATION: Place mulch to the required depth, (refer to drawings) clear of plant stems, and rake to an even surface finishing 25mm below adjoining levels. Ensure mulch is watered in and tamped down during installation.  
MULCH TYPE: (75mm DEPTH)  
Type 1:  
Pine bark: From mature trees, graded in size from 15mm to 30mm, free from wood slivers. Dark brown in colour and texture.

### COMPOST

Shall be “GO Compost” as available from Soilco or approved equal.

### PLANT MATERIAL

All plants supplied are to conform with those species listed in the Plant Schedule on the drawings. Generally plants shall be vigorous, well established, hardened off, of good form consistent with species or variety, not soft or forced, free from disease or insect pests with large healthy root systems and no evidence of having been restricted or damaged. Trees shall have a leading shoot. Immediately reject dried out, damaged or unhealthy plant material before planting. All stock is to be container grown for a minimum of six (6) months prior to delivery to site.

### FERTILISER

MASS PLANTING AREAS: Fertiliser shall be ‘Nutricote’ or approved equivalent in granule form intended for slow release of plant nutrients over a period of approximately nine months. Thoroughly mix fertiliser with planting mixture at the recommended rate, prior to installing plants.  
TURF: Shall be Shirleys No. 17 or approved equal thoroughly mixed into the topsoil prior to placing turf.  
TREES IN GRASS AND SUPER ADVANCED TREES: Pellets shall be in the form intended to uniformly release plant food elements for a period of approximately nine months equal to Shirleys Kokei pellets, analysis 6.3:1.8:2.9. Kokei pellets shall be placed at the time of planting to the base of the plant, 50mm minimum from the root ball at a rate of two pellets per 300mm of top growth to a maximum of 8 pellets per tree.

### STAKING AND TYING

Stakes shall be straight hardwood, free from knots and twists, pointed at one end and sized according to size of plants to be staked.  
a. 100-greater than 200litre 3x(1800x50x50mm)  
Ties shall be 50mm wide hessian webbing or approved equivalent nailed or stapled to stake. Drive stakes a minimum one third of their length, avoiding damage to the root system, on the windward side of the plant.

### TURF

Obtain turf from a specialist grower of cultivated turf. turf shall be of even thickness, free from weeds and other foreign matter; lay in stretcher pattern with joints staggered and close butted, perpendicular to gradient of FSL. Water immediately after laying.  
TURF TYPE: Couch (Confirm with council prior to construction)

## LANDSCAPE MAINTENANCE PROGRAM

Maintenance shall mean the care and maintenance of the landscape works by accepted horticultural practice as rectifying any defects that become apparent in the landscape works under normal use. This shall include, but shall not be limited to, watering, mowing, fertilising, re-seeding, returfing, weeding, pest and disease control, staking and tying, replanting, cultivation, pruning, aerating, renovating, top dressing, maintaining the site in a neat and tidy condition as follows:-

### GENERAL

The landscape contractor shall maintain the landscape works for the term of the maintenance (or Plant establishment) period to the satisfaction of the council. The landscape contractor shall attend to the site on a weekly basis. Landlord to maintain all landscape areas in perpetuity (life of the development).

### WATERING

Grass, trees and garden areas shall be watered regularly so as to ensure continuous healthy growth.

### RUBBISH REMOVAL

During the term of the maintenance period the landscape contractor shall remove rubbish that may occur and reoccur throughout the maintenance period. This work shall be carried out regularly so that at weekly intervals the area may be observed in a completely clean and tidy condition.

### REPLACEMENTS

The landscape contractor shall replace all plants that are missing, unhealthy or dead at the Landscape Contractor's cost. Replacements shall be of the same size, quality and species as the plant that has failed unless otherwise directed by the Landscape Architect. Replacements shall be made on a continuing basis after the plant has died or is seen to be missing.

### STAKES AND TIES

The landscape contractor shall replace or adjust plant stakes, and tree guards as necessary or as directed by the Landscape Architect. Remove stakes and ties at the end of the maintenance period if so directed.

### PRUNING

General: Prune to reflect the natural growth flowering and regrowth habit of the individual species. Shrubs: Prune after flowering - Spring and Summer and on a spot basis as required.  
Hedge trimming: Schedule trimming at times which will maintain the character and design of hedges. Allow up to three times per season.  
Tip pruning: To encourage development of new shoots during the active growing season. Do not remove buds before the flowering season in those plants that have terminal flowers.  
Radical pruning: To maintain a hedge or formal shape or when a particular problem, growth habit, damage, or disease requires branch removal.  
Trees: Prune to eliminate diseased or damaged growth, avoid inter-branch contact and thin out crowns in a natural manner, maintain sight lines to signs and lights, or maintain visibility for personal security. Tree branch removal to AS 4373. Give notice and engage a suitably qualified ‘arborist’.

### MULCHED SURFACES

All mulched surfaces shall be maintained in a clean and tidy condition and be reinstated if necessary to ensure that a depth of 75mm is maintained. Ensure mulch is kept clear of plant stems at all times. Remove all mulching materials off lawn or paved areas and maintain a clean and tidy appearance when viewed on a weekly basis.

### PEST AND DISEASE CONTROL

The landscape contractor shall spray against insect and fungus infestation with all spraying to be carried out in accordance with the manufacturer's directions. Report all instances of pests and diseases (immediately that they are detected) to the Landscape Architect.

### GRASS AND TURF AREAS

The landscape contractor shall maintain all grass and turf areas by watering, weeding, re-seeding, rolling, mowing, trimming or other operations as necessary. Seed and turf species shall be the same as the original specified mixture. Grass and turf areas shall be sprayed with approved selective herbicide against broad leafed weeds as required by the Landscape Architect and in accordance with the manufacturer's directions. Grass and turf areas shall be fertilised once a year in autumn with “Dynamic Lifter” for lawns at a rate of 20kg per 100m2. Fertiliser shall be watered in immediately after application. Irregularities in the grass and turf shall be watered in immediately after application.  
Grass and turf areas shall be kept mown to maintain a healthy and vigorous sward. Mowing height: 30-50mm.

### WEED ERADICATION

Eradicate weeds by environmentally acceptable methods using a non-residual glyphosate herbicide (eg. ‘Roundup’) in any of its registered formulae, at the recommended maximum rate. Regularly remove by

hand, weed growth that may occur or recur throughout grassed, planted and mulched areas. Remove weed growth from an area 750mm diameter around the base of trees in grassed areas. Continue eradication throughout the course of the works and during the maintenance period.

### SOIL SUBSIDENCE

Any soil subsidence or erosion which may occur after the soil filling and preparation operations shall be made good by the landscape contractor at no cost to the client.

MAITENANCE PERIOD: (26 Weeks) - Confirm with Project Manager

### IRRIGATION PERFORMANCE SPECIFICATION NOTES

IRRIGATION OVERVIEW - Confirm with Project Manager at tender stage

### EXTENT (Setback, Carpark, Garden and Turf Areas)

All mass planting landscape areas and trees are to have full coverage by a fully automatic irrigation system. The design, materials and installation are to be in accordance with Sydney Water Codes and all relevant Australian Standards.

1. An automatic irrigation system is to be installed to all turf and garden bed areas.
2. The irrigation system shall be designed and installed by a licensed contractor to relevant Australian standards and Sydney water guidelines.
3. The irrigation system shall be connected into the rainwater tank system and pump

### DRIPLINE

Provide 13mm dripline to all garden bed areas with appropriate 13mm joiners. Dripline to be Toro drip or similar with 400mm centre drippers.  
Install line at 500mm spacings with the first line to be 150mm in from edge. Install dripline after planting and prior to mulching to allow for an adequate mulch cover. Anchor at 1.5m maximum intervals with u-shaped stakes. Dripline pattern to suit planting.

### CONTROL VALVES

24v solenoid actuated hydraulic valve with flow control. Control valves to be Toro ezflow series solenoids 25mm or approved equal. Provide a gate valve of the same size immediately upstream of each valve. House both valves in a high impact plastic valve box with a high impact plastic cover at finished ground level. Support the box with bricks on each side. Controller to be Toro greenkeeper or approved equal with a rain switch. Install a master valve/pressure regulating valve equal to Toro p220 with exreg pressure regulation valve. Filter to be installed equal to Toro y filter 75mm screen filter.



### CONTROL WIRES

Connect the control valves and soil moisture sensor to the controller with double insulated underground cables laid alongside piping where possible. Lay intertwined for their full length without joints except at the valves and branches off common wires. Provide waterproof connectors.

Provide a backflow prevention device to Sydney water standards AS 3500.

## RELEVANT AUSTRALIAN STANDARDS

Soil: AS4419, AS3743, AS4454.  
Mulch: AS4454.  
Tree Stock: AS2303.  
Pruning: AS4373.  
Tree Protection: AS4970.  
Contractors to comply with the above Australian Standards.

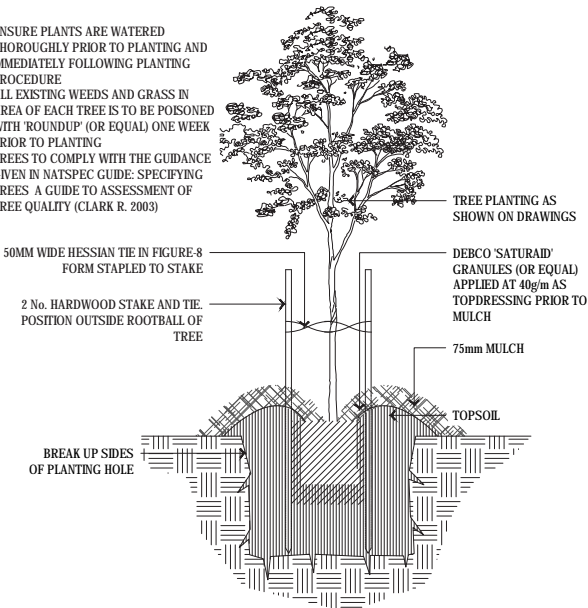
PROJECT	DRAWING TITLE	PROJECT NO.	PURPOSE	SCALE	REVISION	DATE	DRAWN	CHECKED	PAGE	CLIENT
ARDEX WAREHOUSE THE YARDS, KEMPS CREEK NSW	TYPICAL SPECIFICATION + MAINTENANCE NOTES	H8-21023	COUNCIL SUBMISSION	NTS	G	14.07.2022	KM/DG	DV	L 12	
										Level 57, MLC Centre 19-29 Martin Place, Sydney, NSW 2000  32/24 Scott St, Byron Bay, NSW 2481  www.habit8.com.au M: 0425 206 047



TYPICAL LANDSCAPE DETAILS

NOTE:

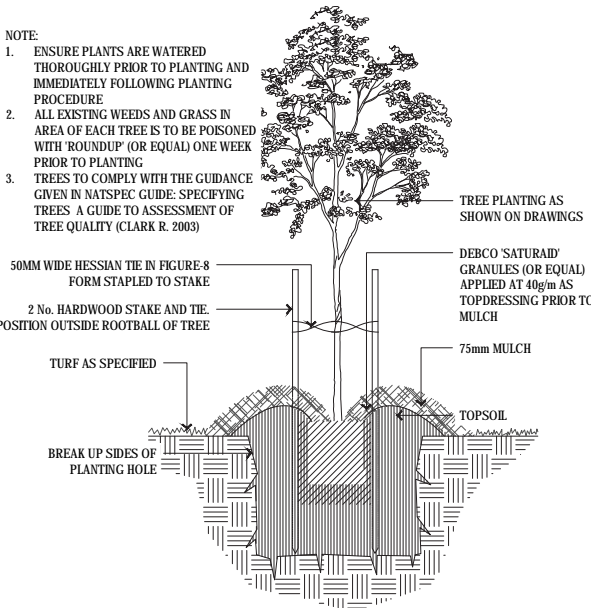
- 1. ENSURE PLANTS ARE WATERED THOROUGHLY PRIOR TO PLANTING AND IMMEDIATELY FOLLOWING PLANTING PROCEDURE
- 2. ALL EXISTING WEEDS AND GRASS IN AREA OF EACH TREE IS TO BE POISONED WITH 'ROUNDUP' (OR EQUAL) ONE WEEK PRIOR TO PLANTING
- 3. TREES TO COMPLY WITH THE GUIDANCE GIVEN IN NATSPEC GUIDE: SPECIFYING TREES A GUIDE TO ASSESSMENT OF TREE QUALITY (CLARK R. 2003)



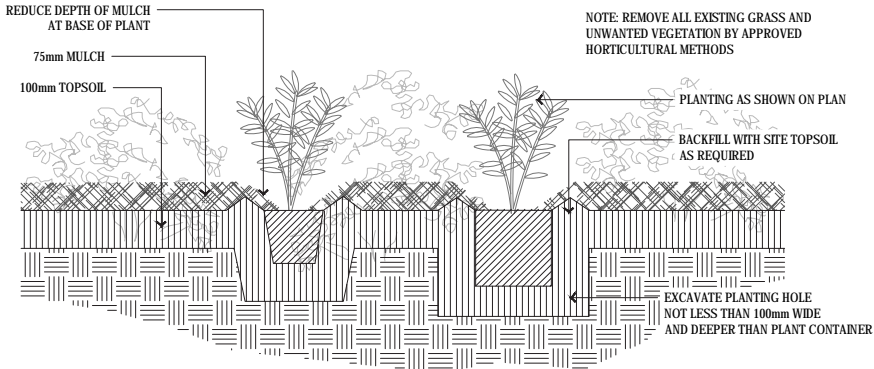
A TYPICAL TREE PLANTING DETAIL UNDER 100L (IN GARDEN BED)  
SCALE 1 : 20 @A1

NOTE:

- 1. ENSURE PLANTS ARE WATERED THOROUGHLY PRIOR TO PLANTING AND IMMEDIATELY FOLLOWING PLANTING PROCEDURE
- 2. ALL EXISTING WEEDS AND GRASS IN AREA OF EACH TREE IS TO BE POISONED WITH 'ROUNDUP' (OR EQUAL) ONE WEEK PRIOR TO PLANTING
- 3. TREES TO COMPLY WITH THE GUIDANCE GIVEN IN NATSPEC GUIDE: SPECIFYING TREES A GUIDE TO ASSESSMENT OF TREE QUALITY (CLARK R. 2003)



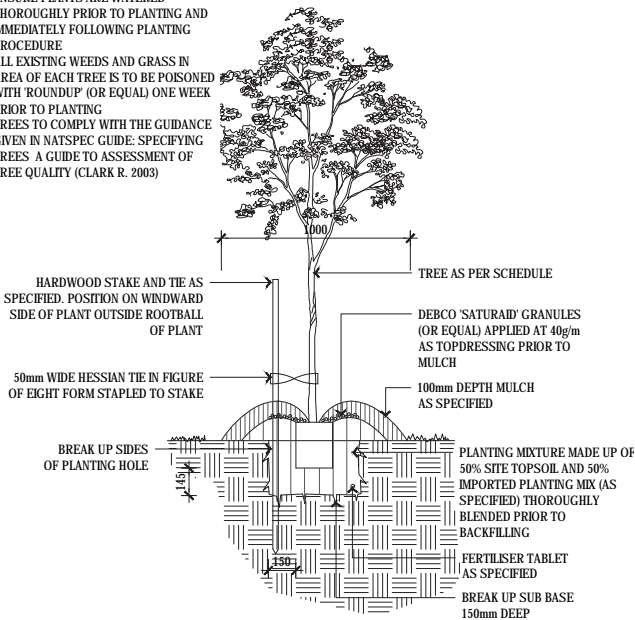
B TYPICAL TREE PLANTING DETAIL (IN TURF)  
SCALE 1 : 20 @A1



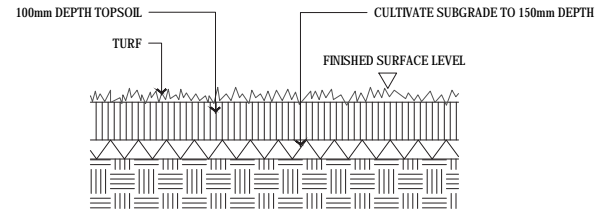
C MASS PLANTING DETAIL  
SCALE 1 : 10 @A1

NOTE:

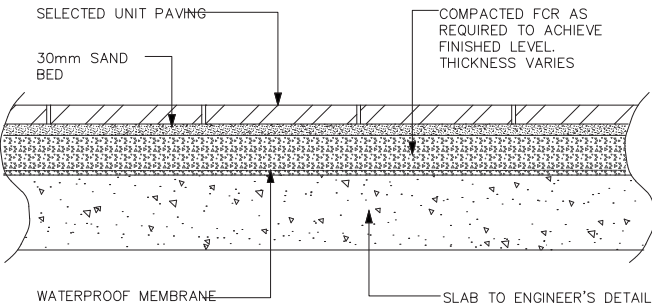
- 1. ENSURE PLANTS ARE WATERED THOROUGHLY PRIOR TO PLANTING AND IMMEDIATELY FOLLOWING PLANTING PROCEDURE
- 2. ALL EXISTING WEEDS AND GRASS IN AREA OF EACH TREE IS TO BE POISONED WITH 'ROUNDUP' (OR EQUAL) ONE WEEK PRIOR TO PLANTING
- 3. TREES TO COMPLY WITH THE GUIDANCE GIVEN IN NATSPEC GUIDE: SPECIFYING TREES A GUIDE TO ASSESSMENT OF TREE QUALITY (CLARK R. 2003)



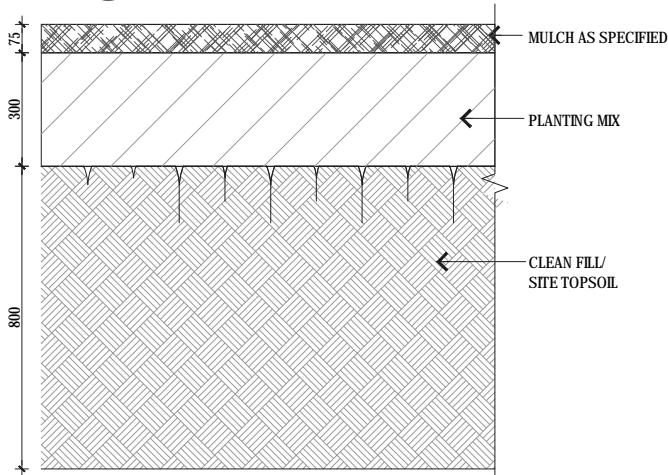
D TYPICAL TREE PLANTING DETAIL OVER 100L  
SCALE 1 : 20 @A1



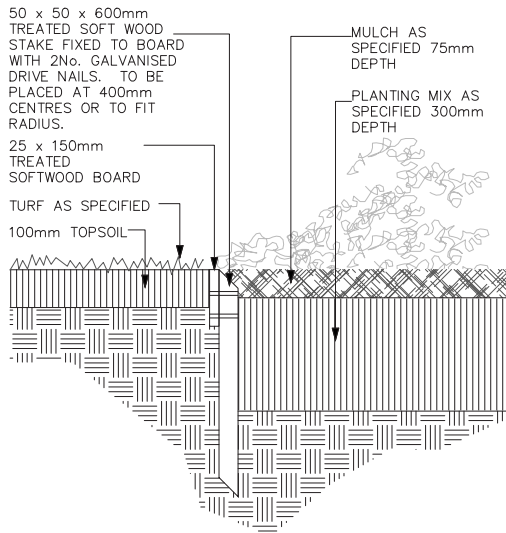
G TURF DETAIL  
SCALE 1 : 10 @A1



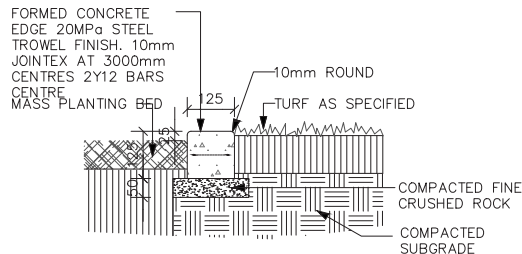
E UNIT PAVING ON SLAB DETAIL  
SCALE 1 : 10 @A1



H TYPICAL SOIL PROFILE  
SCALE 1 : 10 @A1



F TIMBER EDGE DETAIL  
SCALE 1 : 10 @A1



I CONCRETE EDGE DETAIL  
SCALE 1 : 10 @A1