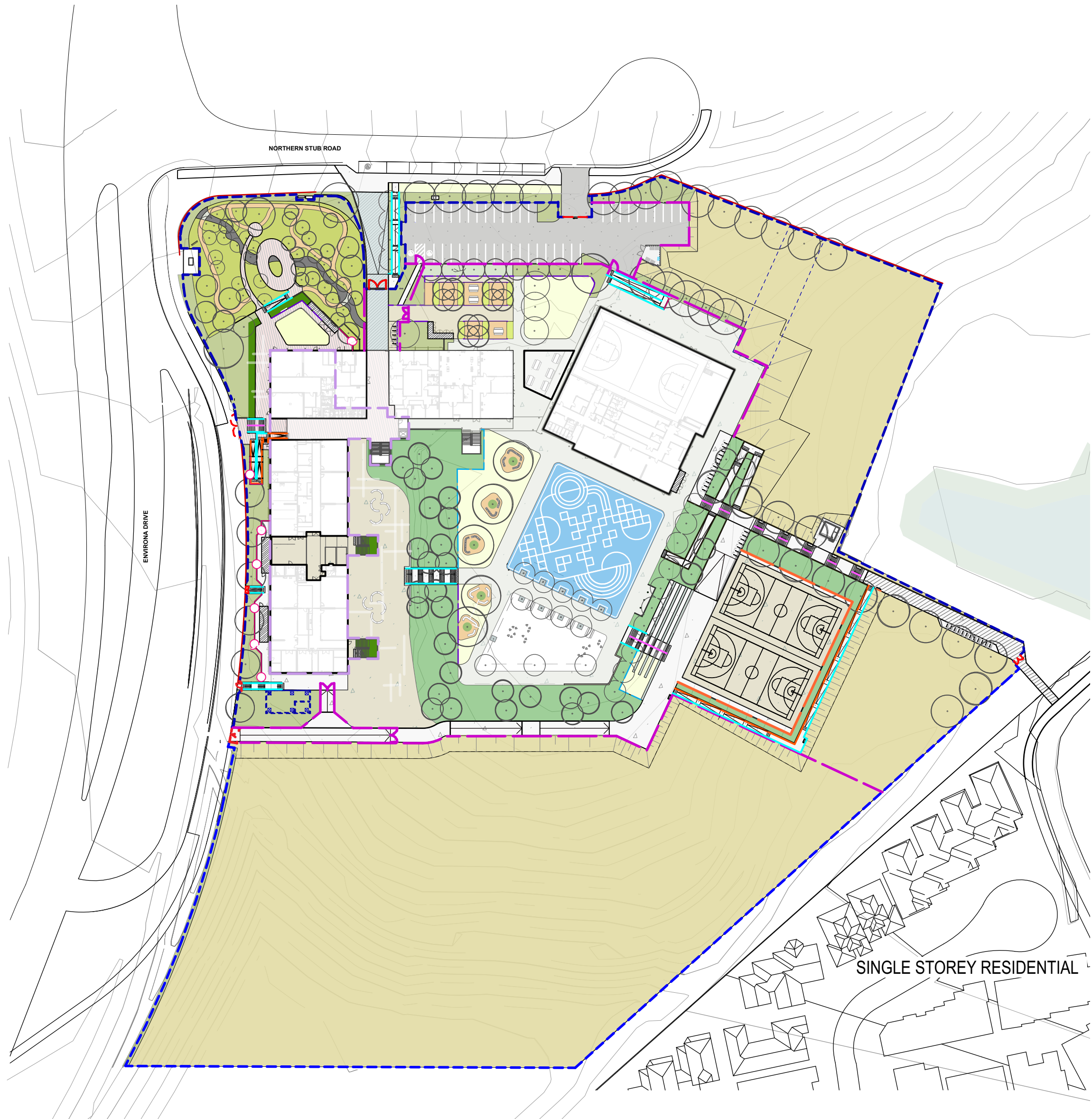


NEW HIGH SCHOOL AT JERRABOMBERRA, NSW



LANDSCAPE

DWG NO.

JHS_LA_SSDA_0001
JHS_LA_SSDA_1000
JHS_LA_SSDA_1101
JHS_LA_SSDA_1102
JHS_LA_SSDA_2002
JHS_LA_SSDA_2003
JHS_LA_SSDA_2004
JHS_LA_SSDA_2005
JHS_LA_SSDA_2006

DRAWINGS

DRAWING TITLE

COVER SHEET
LANDSCAPE SITE PLAN
NORTHERN CAMPUS DETAIL PLAN
SOUTHERN CAMPUS DETAIL PLAN
PLANTING PLAN
PROPOSED TREE PLAN
INDICATIVE SPECIES
INDICATIVE SPECIES
FENCING PLAN

SHEET REGISTER

SCALE

1:1000 @ A1
1:500 @ A1
1:300 @ A1
1:300 @ A1
1:500 @ A1
1:500 @ A1
NTS
NTS
1:500 @ A1

CLIENT	Project Managers	Architect	
	TSA	Tanner Kibble Denton Architects Pty Ltd	
	T+ 61 2 9276 1400	T+ 61 2 9281 4399	
NSW Department of Education School Infrastructure NSW	Structural & Civil		
T+ 61 2 9561 1927	Meinhardt Bonacci		
	T+ 61 2 8247 8400		
	Mechanical, Electrical, Hydraulic, ESD		
	Norman Disney & Young		
	T+ 61 2 9528 6800		

Do not scale drawings. Verify all dimensions on site. Notify architect of all discrepancies

© Copyright Context Landscape Design Pty Ltd 2019

Rev	Date	Description	Chkd	Auth
1	26/7/21	Issue for SSDA	CK	HD
2	13/09/21	Issue for SSDA	CK	HD
3	18/3/22	Issued for response to submissions	ID	JR
4	21/3/22	Issued for response to submissions	ID	JR

Project
NEW HIGH SCHOOL IN JERRABOMBERRA
Drawing Title
COVER SHEET

Drawn	Reviewed	Status	Format
ID	JR	SSDA	A1
Job No.	Date	Scale	
15562	18/03/22	1:1000 @ A1	
Drawing No.		Revision	
JHS_LA_SSDA_0001		4	

NOT FOR CONSTRUCTION

52-59 William Street, East Sydney NSW 2011
PO Box A868 Sydney South NSW 1235
T: 61 2 8244 8900 F: 61 2 8244 8988
E: context@context.net.au
www.context.net.au

CONTEXT
LANDSCAPE ARCHITECTURE



LEGEND

- SITE BOUNDARY
- CONCRETE EXPOSED AGGREGATE [TYPE 1]
- CONCRETE EXPOSED AGGREGATE [TYPE 2]
- GREY CONCRETE
- COLOURED CONCRETE [TYPE 1]
- COLOURED CONCRETE [TYPE 2] WITH PAINTED LINEMARKINGS
- COLOURED CONCRETE [TYPE 3]
- DECOMPOSED GRANITE [TYPE 1]
- DECOMPOSED GRANITE [TYPE 2]
- SYTHETIC TURF
- ASPHALT SURFACE
- SITE STONE 'DRY CREEK BED'
- NATURAL TURF
- NATIVE GRASSLAND
- MASS PLANTING
- TACTILE GROUND SURFACE INDICATOR
- RAISED PLANTER BOX
- INSITU CONCRETE WALL [SEATING WALL 1]
- CONCRETE BLOCKWORK WALL
- SIGNAGE WALL
- INSITU CONCRETE WALL [SEATING WALL 2]
- CONCRETE STAIR
- CONCRETE SEATING STAIR
- CONCRETE STAIR/BIKE RAMP
- PALISADE FENCE [TYPE 1]
- PALISADE FENCE [TYPE 2]
- CHAINWIRE FENCE
- BALUSTRADE
- HANDRAIL [TYPE 1]
- HANDRAIL [TYPE 2] WITH BALUSTRADE
- HANDRAIL [TYPE 3]
- DOUBLE SWING GATE
- SLIDING GATE
- DOUBLE SWING GATE
- SWING GATE
- CONCRETE EDGE
- TIMBER EDGE
- TREE GRATE FX1.1-1.2
- MOVEABLE SEATING
- SEATING ELEMENT FX3.1-3.2
- PICNIC SEATING
- BIKE RACK
- BASKETBALL HOOPS
- RUBBISH BIN
- FLAG POLES
- SITE STONE

NOT FOR CONSTRUCTION

CLIENT NSW Department of Education School Infrastructure NSW T+ 61 2 9561 1927	Project Managers TSA T+ 61 2 9276 1400 Structural & Civil Meinhardt Bonacci T+ 61 2 8247 8400 Mechanical, Electrical, Hydraulic, ESD Norman Disney & Young T+ 61 2 9928 6800	Architect Tanner Kibble Denton Architects Pty Ltd T +61 2 9281 4399	

Do not scale drawings. Verify all dimensions on site. Notify architect of all discrepancies

© Copyright Context Landscape Design Pty Ltd 2015

Rev	Date	Description	Chkd	Auth
3	13/09/21	Issue for SSDA	CK	HD
4	26/9/21	Issue for SSDA	CK	HD
5	18/3/22	Issued for response to submissions	ID	HD
6	21/3/22	Issued for response to submissions	ID	HD
7	23/3/22	Issued for response to submissions	ID	JR
8	24/3/22	Issued for response to submissions	ID	JR

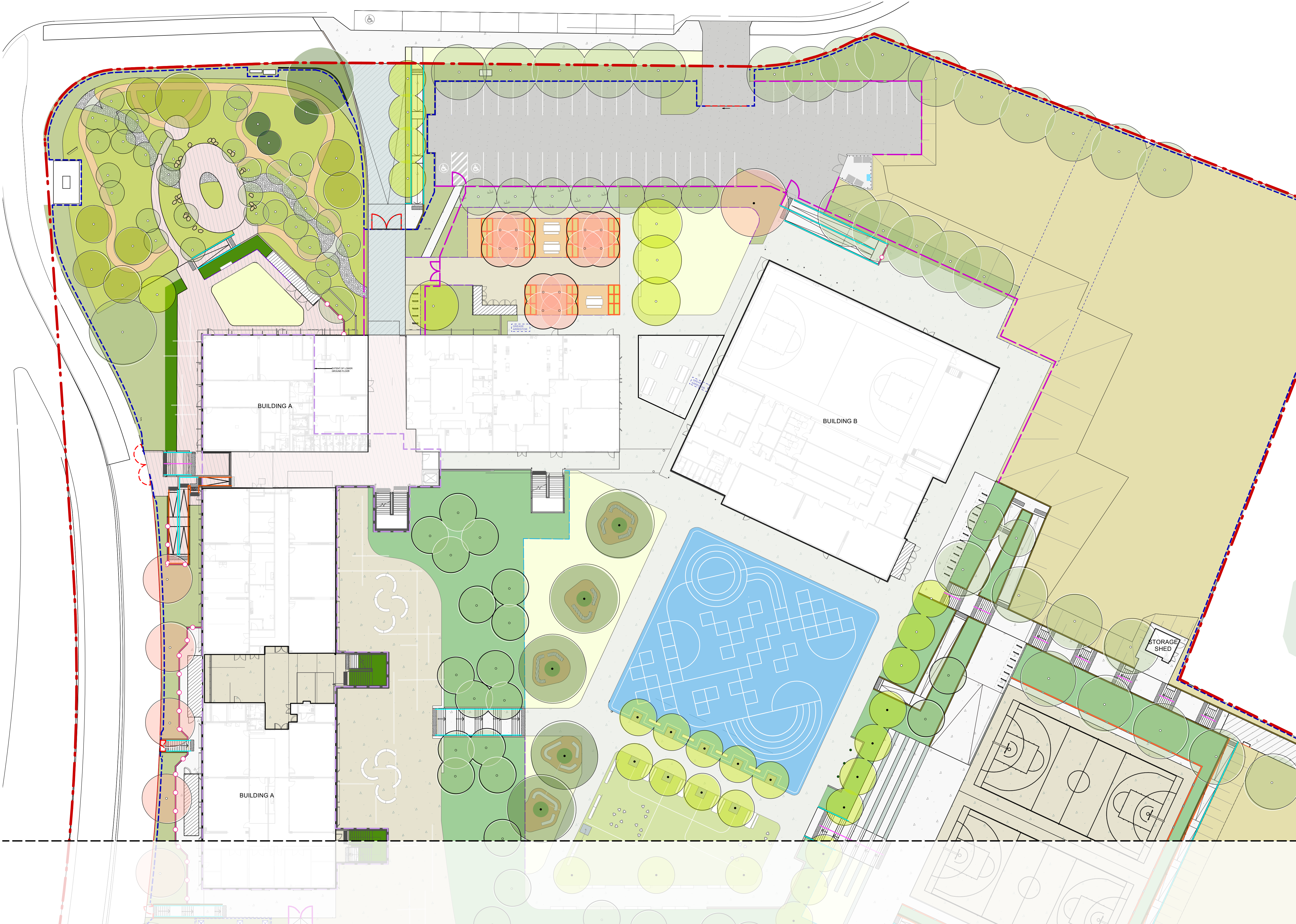
Project NEW HIGH SCHOOL IN JERRABOMBERRA
Drawing Title LANDSCAPE SITE PLAN
CTX_20575_jerrabomberra_HS_DA.vwx

Drawn ID	Reviewed JR	Status SSDA	Format A1
Job No. 15562	Date 24/03/22	Scale 1:500 @ A1	
Drawing No. JHS_LA_SSDA_1000			

Revision
8

CONTEXT
LANDSCAPE ARCHITECTURE

52-59 William Street, East Sydney NSW 2011
PO Box A868 Sydney South NSW 1235
T 61 2 8244 8900 F 61 2 8244 8988
E context@context.net.au
www.context.net.au



LEGEND

- SITE BOUNDARY
- CONCRETE EXPOSED AGGREGATE [TYPE 1]
- CONCRETE EXPOSED AGGREGATE [TYPE 2]
- GREY CONCRETE
- COLOURED CONCRETE [TYPE 1]
- COLOURED CONCRETE [TYPE 2] WITH PAINTED LINEMARKINGS
- COLOURED CONCRETE [TYPE 3]
- DECOMPOSED GRANITE [TYPE 1]
- DECOMPOSED GRANITE [TYPE 2]
- SYTHETIC TURF
- ASPHALT SURFACE
- SITE STONE 'DRY CREEK BED'
- NATURAL TURF
- NATIVE GRASSLAND
- MASS PLANTING
- TACTILE GROUND SURFACE INDICATOR
- RAISED PLANTER BOX
- INSITU CONCRETE WALL [SEATING WALL 1]
- CONCRETE BLOCKWORK WALL
- SIGNAGE WALL
- INSITU CONCRETE WALL [SEATING WALL 2]
- CONCRETE STAIR
- CONCRETE SEATING STAIR
- CONCRETE STAIR/BIKE RAMP
- PALISADE FENCE [TYPE 1]
- PALISADE FENCE [TYPE 2]
- CHAINWIRE FENCE
- BALUSTRADE
- HANDRAIL [TYPE 1]
- HANDRAIL [TYPE 2] WITH BALUSTRADE
- HANDRAIL [TYPE 3]
- DOUBLE SWING GATE
- SLIDING GATE
- DOUBLE SWING GATE
- SWING GATE
- CONCRETE EDGE
- TIMBER EDGE
- TREE GRATE FX1.1-1.2
- MOVEABLE SEATING
- SEATING ELEMENT FX3.1-3.2
- PICNIC SEATING
- BIKE RACK
- BASKETBALL HOOPS
- RUBBISH BIN
- FLAG POLES
- SITE STONE

NOT FOR CONSTRUCTION

CLIENT

NSW Department of Education |
School Infrastructure NSW
T+ 61 2 9561 1927

Project Managers

TSA

T+ 61 2 9276 1400

Structural & Civil

Meinhardt Bonacci

T+ 61 2 8247 8400

Mechanical, Electrical, Hydraulic, ESD

Norman Disney & Young

T+ 61 2 9928 6800

Architect

Tanner Kibble Denton Architects Pty Ltd

T+ 61 2 9281 4399

0 3 6 9 12 15m

Do not scale drawings. Verify all dimensions on site. Notify architect of all discrepancies.

© Copyright Context Landscape Design Pty Ltd 2019

Rev	Date	Description	Chkd	Auth
1	26/7/21	Issue for SSDA	CK	HD
2	13/09/21	Issue for SSDA	CK	HD
3	18/3/22	Issued for response to submissions	ID	JR
4	21/3/22	Issued for response to submissions	ID	JR
5	24/3/22	Issue for response to submissions	ID	JR

24/3/22

Project

NEW HIGH SCHOOL
IN JERRABOMBERRA

Drawing Title

NORTHERN CAMPUS DETAIL PLAN

CTX_20575_jerrabomberra HS_DA.vwx

Drawn

ID

Reviewed

JR

Status

SSDA

Format

A1

Job No.

15562

Date

24/03/22

Scale

1:300 @ A1

Drawing No.

JHS_LA_SSDA_1001

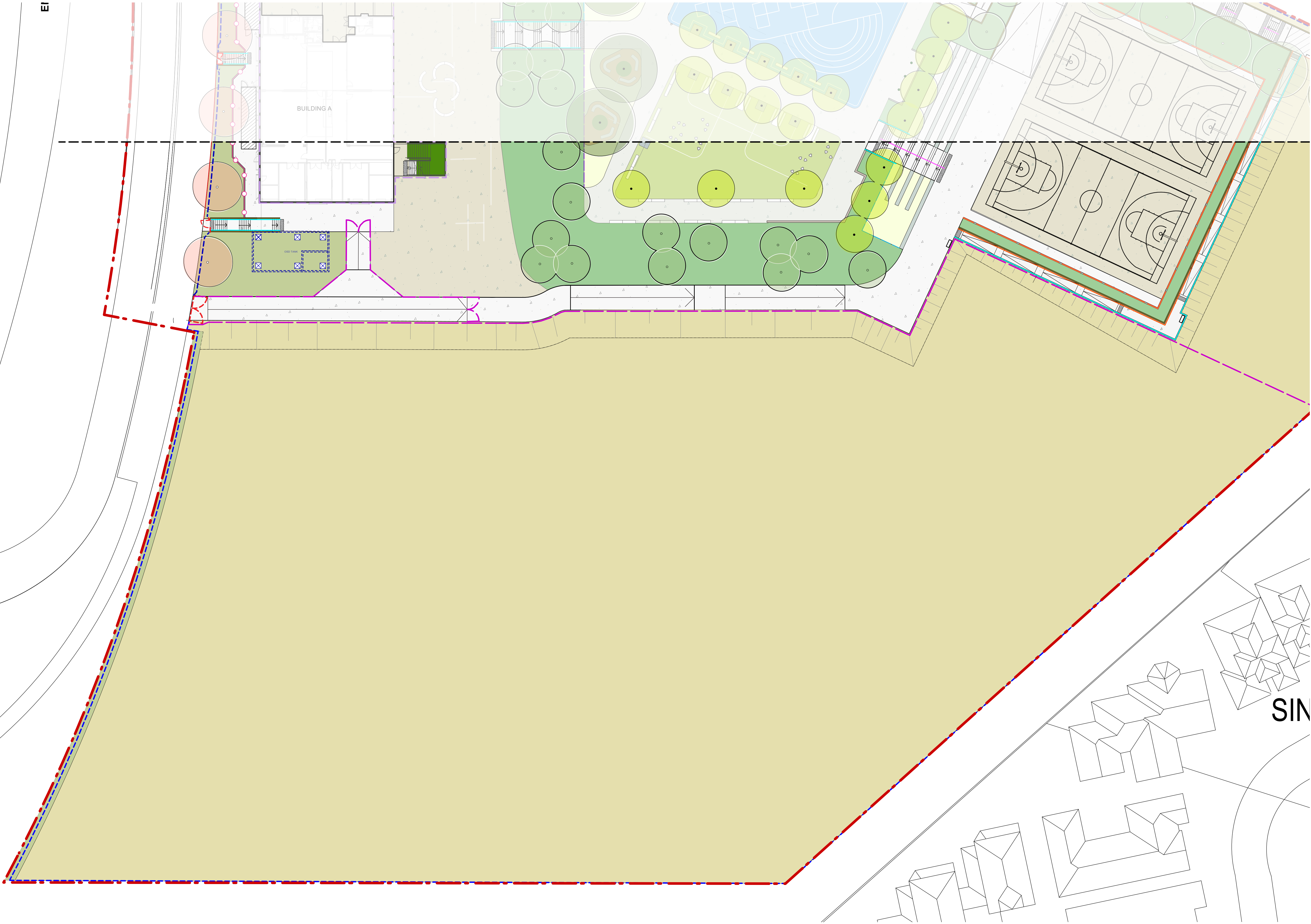
Revision

5

52-59 William Street, East Sydney NSW 2011
PO Box A868 Sydney South NSW 1235
T+ 61 2 8244 8900 F+ 61 2 8244 8988
E: context@context.net.au
www.context.net.au

CONTEXT
LANDSCAPE ARCHITECTURE

E



- LEGEND**
- SITE BOUNDARY
 - CONCRETE EXPOSED AGGREGATE [TYPE 1]
 - CONCRETE EXPOSED AGGREGATE [TYPE 2]
 - GREY CONCRETE
 - COLOURED CONCRETE [TYPE 1]
 - COLOURED CONCRETE [TYPE 2] WITH PAINTED LINEMARKINGS
 - COLOURED CONCRETE [TYPE 3]
 - DECOMPOSED GRANITE [TYPE 1]
 - DECOMPOSED GRANITE [TYPE 2]
 - SYTHETIC TURF
 - ASPHALT SURFACE
 - SITE STONE 'DRY CREEK BED'
 - NATURAL TURF
 - NATIVE GRASSLAND
 - MASS PLANTING
 - TACTILE GROUND SURFACE INDICATOR
 - RAISED PLANTER BOX
 - INSITU CONCRETE WALL [SEATING WALL 1]
 - CONCRETE BLOCKWORK WALL
 - SIGNAGE WALL
 - INSITU CONCRETE WALL [SEATING WALL 2]
 - CONCRETE STAIR
 - CONCRETE SEATING STAIR
 - CONCRETE STAIR/BIKE RAMP
 - PALISADE FENCE [TYPE 1]
 - PALISADE FENCE [TYPE 2]
 - CHAINWIRE FENCE
 - BALUSTRADE
 - HANDRAIL [TYPE 1]
 - HANDRAIL [TYPE 2] WITH BALUSTRADE
 - HANDRAIL [TYPE 3]
 - DOUBLE SWING GATE
 - SLIDING GATE
 - DOUBLE SWING GATE
 - SWING GATE
 - CONCRETE EDGE
 - TIMBER EDGE
 - TREE GRATE FX1.1-1.2
 - MOVEABLE SEATING
 - SEATING ELEMENT FX3.1-3.2
 - PICNIC SEATING
 - BIKE RACK
 - BASKETBALL HOOPS
 - RUBBISH BIN
 - FLAG POLES
 - SITE STONE

SIN

NOT FOR CONSTRUCTION

CLIENT	Project Managers TSA T+ 61 2 9276 1400 Structural & Civil Meinhardt Bonacci T+ 61 2 8247 8400 Mechanical, Electrical, Hydraulic, ESD Norman Disney & Young T+ 61 2 9928 6800	Architect Tanner Kibble Denton Architects Pty Ltd T +61 2 9281 4399	
NSW Department of Education School Infrastructure NSW T+ 61 2 9561 1927			



Do not scale drawings. Verify all dimensions on site. Notify architect of all discrepancies

© Copyright Context Landscape Design Pty Ltd 2019

Rev	Date	Description	Chkd	Auth
1	26/7/21	Issue for SSDA	CK	HD
2	13/09/21	Issue for SSDA	CK	HD
3	18/3/22	Issued for response to submissions	ID	JR
4	21/3/22	Issued for response to submissions	ID	JR
5	24/3/22	Issue for response to submissions	ID	JR

Project	Drawn	Reviewed	Status	Format
NEW HIGH SCHOOL IN JERRABOMBERRA	ID	JR	SSDA	A1
Drawing Title	Job No.	Date	Scale	
SOUTHERN CAMPUS DETAIL PLAN	15562	24/03/22	1:300 @ A1	
	Drawing No.	Revision		
	JHS_LA_SSDA_1002	5		

Drawn	Reviewed	Status	Format
ID	JR	SSDA	A1
Job No.	Date	Scale	
15562	24/03/22	1:300 @ A1	
Drawing No.	Revision		
JHS_LA_SSDA_1002	5		



52-59 William Street, East Sydney NSW 2011
PO Box A868 Sydney South NSW 1235
T 61 2 8244 8900 F 61 2 8244 8988
E: context@context.net.au
www.context.net.au

CONTEXT
LANDSCAPE ARCHITECTURE



- LEGEND
- PT1 - CAMPUS PERIMETER PLANTING
 - PT2 - EDUCATIONAL PLANTING
 - PT3 - PRODUCTIVE GARDEN
 - PT4 - TERRACE PLANTING
 - PT5 - PLANTER BED
 - PT6 - NATIVE GRASSLAND
 - PT7 - VEGETABLE SWALE (WSUD PLANTING)
 - T1 - NATURAL TURF
 - STRUCTURAL SOIL

PLANT TYPE		POT SIZE	RATE / SPACING	RATIO
PT 1 - CAMPUS PERIMETER PLANTING				
AREA: 1930	m ²			
	Grasses	Tube	6 Plants / m ²	40%
	Large Shrubs	150mm	2 Plants / m ²	20%
	Medium Shrubs	150mm	4 Plants / m ²	20%
	Small Shrubs / Groundcovers	Tube	6 Plants / m ²	20%
				100%
PT 2 - EDUCATIONAL PLANTING				
AREA: 1148	m ²			
	Grasses	Tube	6 Plants / m ²	50%
	Large Shrubs	150mm	2 Plants / m ²	10%
	Medium Shrubs	150mm	4 Plants / m ²	20%
	Small Shrubs / Groundcovers	Tube	6 Plants / m ²	20%
				100%
PT 3 - PRODUCTIVE GARDEN				
AREA: 71	m ²			
	Grasses	Tube	6 Plants / m ²	25%
	Large Shrubs	150mm	2 Plants / m ²	15%
	Medium Shrubs	150mm	4 Plants / m ²	30%
	Small Shrubs / Groundcovers	Tube	6 Plants / m ²	30%
				100%
PT 4 - TERRACE PLANTING				
AREA: 2381	m ²			
	Grasses	Tube	6 Plants / m ²	50%
	Medium Shrubs	150mm	4 Plants / m ²	20%
	Small Shrubs / Groundcovers	Tube	6 Plants / m ²	30%
				100%
PT 5 - PLANTER BEDS				
AREA: 142	m ²			
	Grasses	Tube	6 Plants / m ²	25%
	Large Shrubs	150mm	2 Plants / m ²	15%
	Medium Shrubs	150mm	4 Plants / m ²	30%
	Small Shrubs / Groundcovers	Tube	6 Plants / m ²	30%
				100%
PT 6 - GRASSLAND REVEGETATION				
AREA: 20124	m ²			
	Grasses	Tube	6 Plants / m ²	20%
	Seeding	-	10kg / Hectare	80%
				100%
PT 7 - BIORETENTION BASIN				
AREA: 20124	m ²			
	Grasses	Tube	6 Plants / m ²	100%
				100%

NOT FOR CONSTRUCTION

CLIENT	Project Managers TSA T+ 61 2 9276 1400 Structural & Civil Meinhardt Bonacci T+ 61 2 8247 8400 Mechanical, Electrical, Hydraulic, ESD Norman Disney & Young T+ 61 2 9928 6800	Architect Tanner Kibble Denton Architects Pty Ltd T+ 61 2 9281 4399	
NSW Department of Education School Infrastructure NSW T+ 61 2 9561 1927			



Do not scale drawings. Verify all dimensions on site. Notify architect of all discrepancies.
© Copyright Context Landscape Design Pty Ltd 2019

Rev	Date	Description	Chkd	Auth
2	13/09/21	Issue for SSDA	CK	HD
3	18/3/22	Issue for SSDA	ID	HD
4	21/3/22	Issued for response to submissions	ID	JR
5	24/3/22	Issued for response to submissions	ID	JR

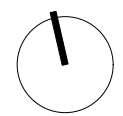
24/3/22

Project
NEW HIGH SCHOOL
IN JERRABOMBERRA

Drawing Title
PLANTING PLAN

CTX_20575_jerrabomberra HS_DA_vwx

Drawn	Reviewed	Status	Format
JK	HD	SSDA	A1
Job No.	Date	Scale	
15562	24.03.21	1:250 @ A1	
Drawing No.	Revision		
JHS_LA_SSDA_2002	5		



52-58 William Street, East Sydney NSW 2011
PO Box A986 Sydney South NSW 1235
T: 61 2 8244 8800 F: 61 2 8244 8988
E: context@context.net.au
www.context.net.au

CONTEXT
LANDSCAPE ARCHITECTURE



- LEGEND**
- FEATURE CANOPY TREE
75L
 - CANOPY TREE
75L EXOTIC
 - CANOPY TREE
25L NATIVE
 - CANOPY TREE
25L EXOTIC
 - NATIVE TREE
200mm NATIVE

APPROX. TOTAL SITE AREA - 45,000m²
APPROX. MATURE CANOPY AREA - 145%
APPROX. MATURE CANOPY COVER - 32%

TREE TYPE	POT SIZE	QTY
Feature Canopy Tree	75L	6
Canopy Tree - Exotic	75L	19
Canopy Tree - Exotic	25L	31
Canopy Tree - Native	25L	117
Canopy Tree - Native	200mm	3
Total		176

Feature Canopy Tree species	Matue Height
Eucalyptus pauciflora 'Little Snowman'	15m

Canopy Tree species [exotic]	Matue Height
Fraxinus pennsylvanica 'Urbanite'	10-15m
Lagerstroemia indica	8m
Liriodendron tulipifera	25-30m
Nyssa sylvatica	10m
Zelkova serrata 'Green Vase'	14m

Canopy Tree species [native]	Matue Height
Acacia howittii 'Honey Bun'	3-15m
Angophora hispida	7m
Banksia ericifolia	3-15m
Banksia serrata	9m
Callistemon citrinus	3-15m
Corea alba	3-15m
Eucalyptus cinerea	15m
Eucalyptus dives	15m
Eucalyptus ficifolia	5-10m
Eucalyptus mannifera	15m
Eucalyptus sideroxylon	15m
Eucalyptus viminalis	20m+
Kunzea ambigua	3-15m
Melaleuca armillaris	3-15m
Melaleuca decussata	3-15m

NOT FOR CONSTRUCTION

CLIENT	Project Managers TSA T+ 61 2 9276 1400 Structural & Civil Meinhardt Bonacci T+ 61 2 8247 8400 Mechanical, Electrical, Hydraulic, ESD Norman Disney & Young T+ 61 2 9928 6800	Architect Tanner Kibble Denton Architects Pty Ltd T+ 61 2 9281 4399
NSW Department of Education School Infrastructure NSW T+ 61 2 9561 1927		



Do not scale drawings. Verify all dimensions on site. Notify architect of all discrepancies

© Copyright Context Landscape Design Pty Ltd 2019

Rev	Date	Description	Chkd	Auth
1	26/7/21	Issue for SSDA	CK	HD
2	13/09/21	Issue for SSDA	CK	HD
3	18/3/22	Issued for response to submissions	ID	JR
4	21/3/22	Issued for response to submissions	ID	JR
5	24/3/22	Issued for response to submissions	ID	JR

Project
**NEW HIGH SCHOOL
IN JERRABOMBERRA**

Drawing Title
PROPOSED TREE PLAN

Drawn IR	Reviewed JR	Status SSDA	Format A1
Job No. 15562	Date 24/03/22	Scale 1:300 @ A1	
Drawing No. JHS_LA_SSDA_2003	Revision 5		

CONTEXT
LANDSCAPE ARCHITECTURE

52-59 William Street, East Sydney NSW 2011
PO Box A868 Sydney South NSW 1235
T+ 61 2 8244 8900 F+ 61 2 8244 8988
E+ context@context.net.au
www.context.net.au

PLANTING PALETTES

PT1 - Campus Perimeter Planting



Eucalyptus sideroxylon



Correa alba



Liriodendron tulipifera



Lomandra confertifolia



Carex albula 'Frosted Curl'



Eucalyptus cinerea

PT2 - Educational Planting



Austrostipa densiflora



Carex appressa



Wurmbea dioica



Grevillea aspleniifolia



Callistemon 'Little John'



Banksia marginata

PT3 - Productive Garden



Bulbine bulbosa



Micoseris lanceolata



Dichopogon fimbriatus



Geranium solanderi



Rubus parvifolius



Citrus australasica

NOT FOR CONSTRUCTION

CLIENT	Project Managers	Architect	
	TSA	Tanner Kibble Denton Architects Pty Ltd	
	T + 61 2 9276 1400	T + 61 2 9281 4399	
NSW Department of Education School Infrastructure NSW	Structural & Civil Meinhardt Bonacci		
T + 61 2 9561 1927	T + 61 2 8247 8400		
	Mechanical, Electrical, Hydraulic, ESD Norman Disney & Young		
	T + 61 2 9928 6800		

Do not scale drawings. Verify all dimensions on site. Notify architect of all discrepancies

© Copyright Context Landscape Design Pty Ltd 2015

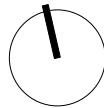
Rev	Date	Description	Chkd	Auth
1	26/7/21	Issue for SSDA	CK	HD
2	13/09/21	Issue for SSDA	CK	HD
3	18/3/22	Issued for response to submissions	ID	JR
4	24/3/22	Issued for response to submissions	ID	JR

24/3/22

Project
NEW HIGH SCHOOL IN JERRABOMBERRA
Drawing Title
INDICATIVE SPECIES

CTX_20575_jerrabomberra HS_DA.vvx

Drawn	Reviewed	Status	Format
IR	JR	SSDA	A1
Job No.	Date	Scale	
15562	24/03/22	NTS	
Drawing No.	Revision		
JHS_LA_SSDA_2004	4		



52-59 William Street, East Sydney NSW 2011
PO Box A868 Sydney South NSW 1235
T + 61 2 8244 8900 F + 61 2 8244 8988
E. context@context.net.au
www.context.net.au

CONTEXT
LANDSCAPE ARCHITECTURE

PLANTING PALETTES

PT4 - Terrace Planting



Carex 'Frosted Curl'



Philotheca myoporoides



Eucalyptus mannifera



Carex apressa



Eucalyptus dives



Dodonaea viscosa

PT5 - Planter Beds



Grevillea 'Poorinda Royal Mantle'



Zelkova serrata



Kunzea baxteri



Wetsringia fruticosa



Dampiera stricta



Grevillea junipera 'Prostrate' Yellow

PT6 - Grassland Revegetation



Chloris truncata



Rytidosperma caespitosum

PT7 - Bioretention Basin



Dichelachne crinita



Lomandra longifolia 'Tanuka'

NOT FOR CONSTRUCTION

CLIENT	Project Managers	Architect	
	TSA	Tanner Kibble Denton Architects Pty Ltd	
	T+ 61 2 9276 1400	T +61 2 9281 4399	
NSW Department of Education School Infrastructure NSW	Structural & Civil Meinhardt Bonacci		
T+ 61 2 8247 8400			
T+ 61 2 9561 1927	Mechanical, Electrical, Hydraulic, ESD Norman Disney & Young		
	T+ 61 2 9928 6800		

Do not scale drawings. Verify all dimensions on site. Notify architect of all discrepancies.
© Copyright Context Landscape Design Pty Ltd 2015

Rev	Date	Description	Chkd	Auth
1	26/7/21	Issue for SSDA	CK	HD
2	13/09/21	Issue for SSDA	CK	HD
3	18/3/22	Issued for response to submissions	ID	JR
4	24/3/22	Issued for response to submissions	ID	JR

Project	
NEW HIGH SCHOOL IN JERRABOMBERRA	
Drawing Title	
INDICATIVE SPECIES	

Drawn	Reviewed	Status	Format
IR	JR	SSDA	A1
Job No.	Date	Scale	
15562	24/03/22	NTS	
Drawing No.	Revision		
JHS_LA_SSDA_2005	4		

52-59 William Street, East Sydney NSW 2011
PO Box A868 Sydney South NSW 1235
T: 61 2 8244 8900 F: 61 2 8244 8988
E: context@context.net.au
www.context.net.au

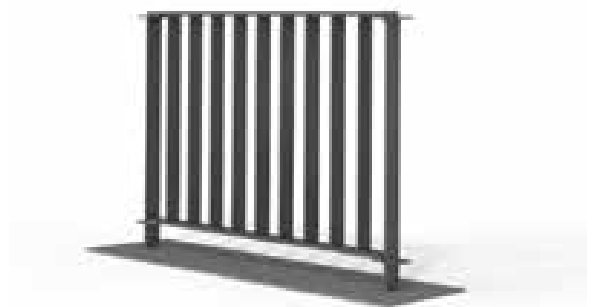
CONTEXT
LANDSCAPE ARCHITECTURE

LEGEND

- FENCE TYPE 1**
EFSG-compliant boundary fence
2.15m high palisade fence
- FENCE TYPE 2**
Entry Forecourt / internal
1.2m high palisade fence
- FENCE TYPE 3**
2.4m high chainwire fence
- BALUSTRADE**
1.2m high balustrade
- HANDRAIL TYPE 1**
Free standing handrail
- HANDRAIL TYPE 2**
Handrail with balustrade
- HANDRAIL TYPE 3**
Handrail centred
- GATES**
Double swing gate
EFSG-compliant palisade
fence 2.15m
- GATES**
Car park entrance
Sliding gate
- GATES**
Double swing gate
1.2m high palisade fence



FENCE TYPE 1
EFSG-compliant boundary fence
2.15m high palisade fence



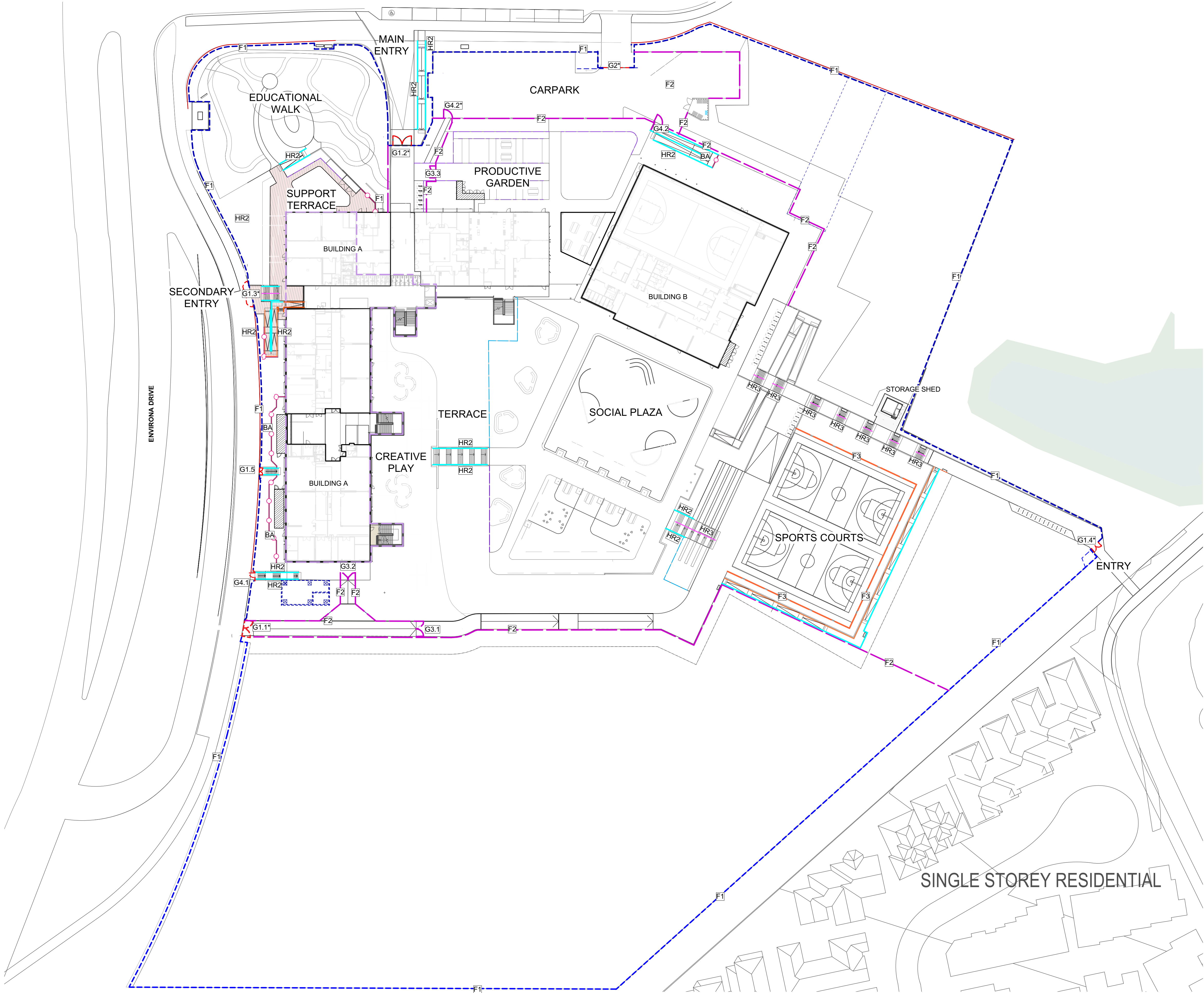
FENCE TYPE 2
Entry Forecourt / internal
1.2m high palisade fence



FENCE TYPE 3
2.4m high chainwire fence

NOTE:
* = Automated gate system

NOT FOR CONSTRUCTION



CLIENT	Project Managers TSA T+ 61 2 9276 1400 Structural & Civil Meinhardt Bonacci T+ 61 2 8247 8400 Mechanical, Electrical, Hydraulic, ESD Norman Disney & Young T+ 61 2 9928 6800	Architect Tanner Kibble Denton Architects Pty Ltd T+ 61 2 9281 4399
NSW Department of Education School Infrastructure NSW T+ 61 2 9561 1927		

Do not scale drawings. Verify all dimensions on site. Notify architect of all discrepancies

© Copyright Context Landscape Design Pty Ltd 2019

Rev	Date	Description	Chkd	Auth
1	26/7/21	Issue for SSDA	CK	HD
2	13/09/21	Issue for SSDA	CK	HD
3	18/3/22	Issued for response to submissions	ID	JR
4	21/3/22	Issued for response to submissions	ID	JR
5	24/3/22	Issued for response to submissions	ID	JR

Project
**NEW HIGH SCHOOL
IN JERRABOMBERRA**

Drawing Title
FENCING PLAN

Drawn	Reviewed	Status	Format
IR	JR	SSDA	A1
Job No.	Date	Scale	
15562	24/03/22	1:300 @ A1	
Drawing No.	Revision		
JHS_LA_SSDA_2006	5		

CONTEXT
LANDSCAPE ARCHITECTURE