

DRAWING NUMBER	SHEET NAME	SHEET SCALE	REVISION	REVISION DATE
AR-0000	COVER SHEET & DRAWING LIST	N/A	D	24.03.22
AR-0500	SITE CONSTRAINTS	1:500	B	24.03.22
AR-0501	SITE ANALYSIS	1:500	B	24.03.22
AR-1010	PROPOSED SITE PLAN	1:200	E	24.03.22
AR-2000	LOWER GROUND FLOOR PLAN	1:200	C	24.03.22
AR-2001	GROUND FLOOR PLAN	1:200	C	24.03.22
AR-2002	FIRST FLOOR PLAN	1:200	C	24.03.22
AR-2003	ROOF PLAN	1:200	C	24.03.22
AR-3000	EAST AND SOUTH ELEVATIONS	1:500	C	24.03.22
AR-3001	NORTH AND WEST ELEVATIONS	1:500	B	24.03.22
AR-3400	BLDG A - SECTIONS - SHEET 01	1:200	B	24.03.22
AR-3410	BLDG B - SECTIONS - SHEET 01	1:200	B	24.03.22
AR-8000	GFA PLANS - SHEET 01	1:1000	C	24.03.22
AR-8200	SHADOW ANALYSIS - SHEET 01	1:1000	C	24.03.22
AR-9000	MATERIALS & FINISHES	N/A	B	24.03.22
AR-9100	PERSPECTIVES	N/A	B	24.03.22



1 LOCATION PLAN

CLIENT

NSW Education
School Infrastructure
NSW Department of Education |
School Infrastructure NSW
T+ 02 9561 8287

Project Managers
TSA Management
T+ 61 2 9276 1400
Structural & Civil
M+G Consulting
T+ 61 2 8666 7888
Mechanical, Electrical, Hydraulic, ESD
Norman Disney & Young
T+ 61 2 9928 6900

Landscape Architecture
Context
T+ 61 2 8244 8900

NSW Nominated Architects: Robert Denton Reg. No. 5782, Alex Kibble Reg. No. 6015
Do not scale drawings. Verify all dimensions on site. Notify architect of all discrepancies

Rev	Date	Description	Chkd	Auth
A	06.09.21	Issued For SSDA	KS	RD
B	08.09.21	Re-Issued for SSDA	KS	RD
C	13.09.21	Re-Issued for SSDA	KS	RD
D	24.03.22	Revisions for RIS	AC	RD

Project
High School in Jerrabomberra

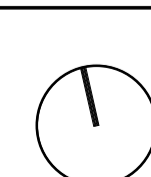
ENVIRONA DRIVE,
JERRABOMBERRA NSW 2619

Drawing Title
COVER SHEET & DRAWING LIST

Proj. Dir	Proj. Arch	Drawn	Sheet
RD	KS	JL	B1

Job No.	Status	Date	Scale
200095	DA	21.05.21	1 : 1

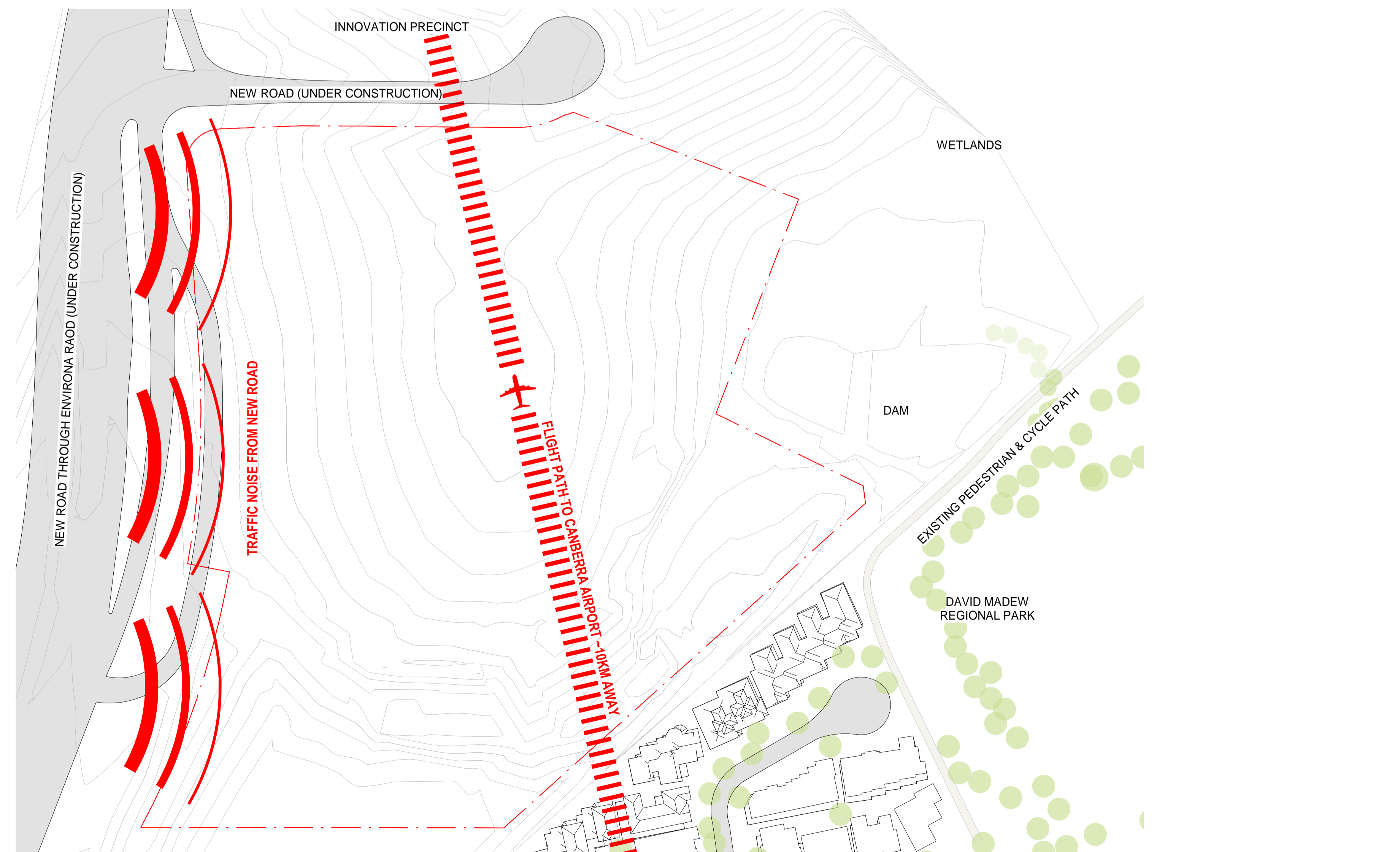
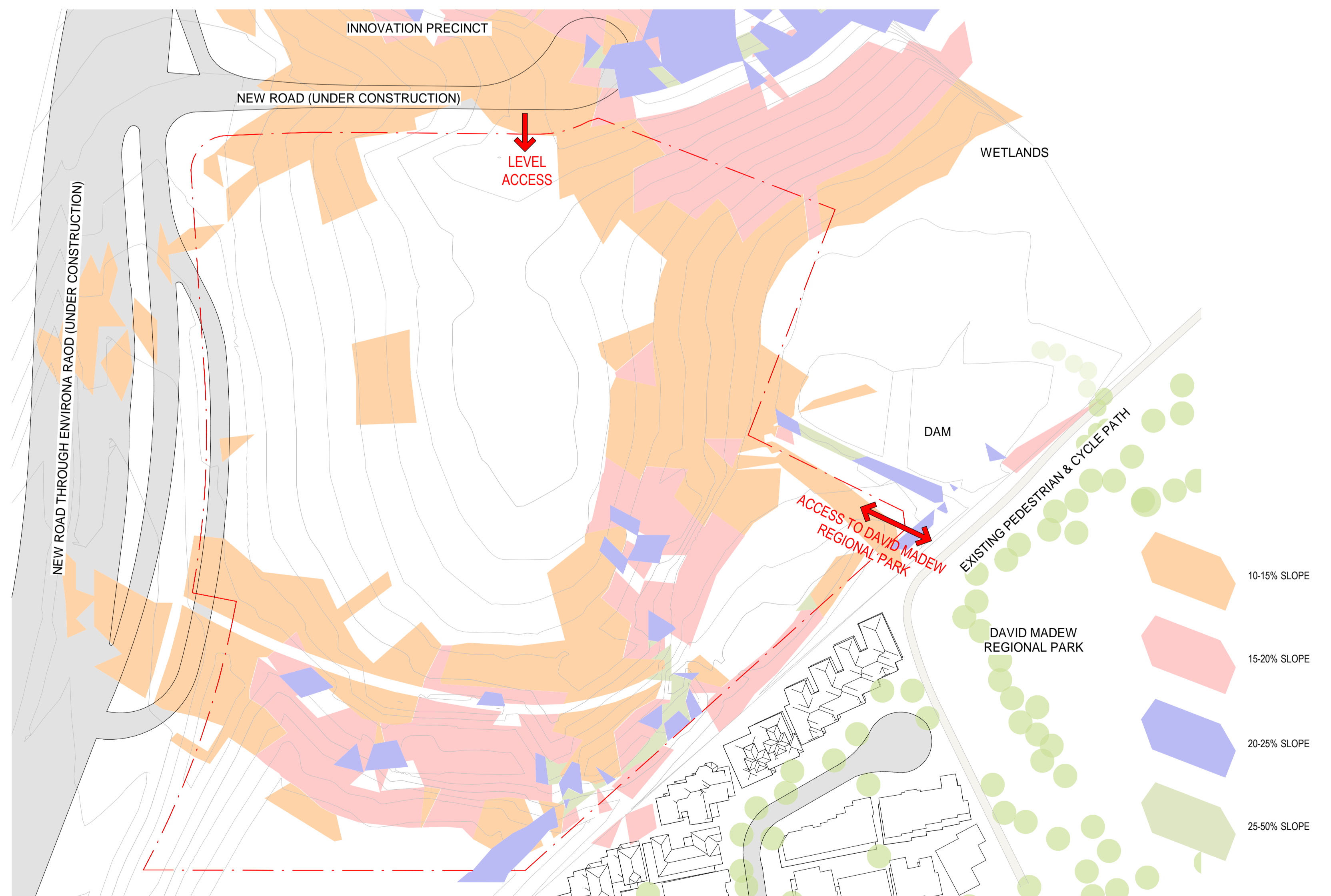
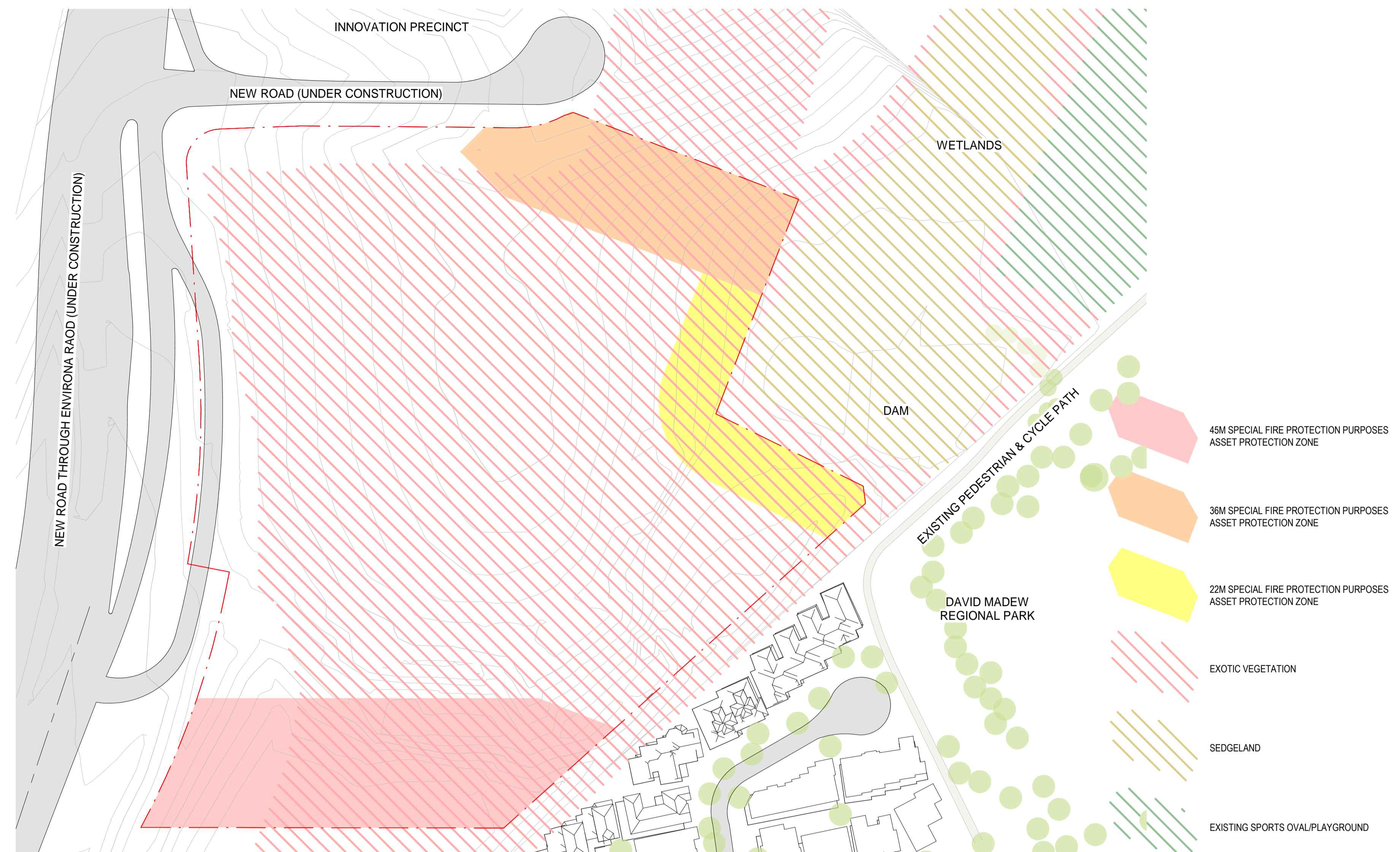
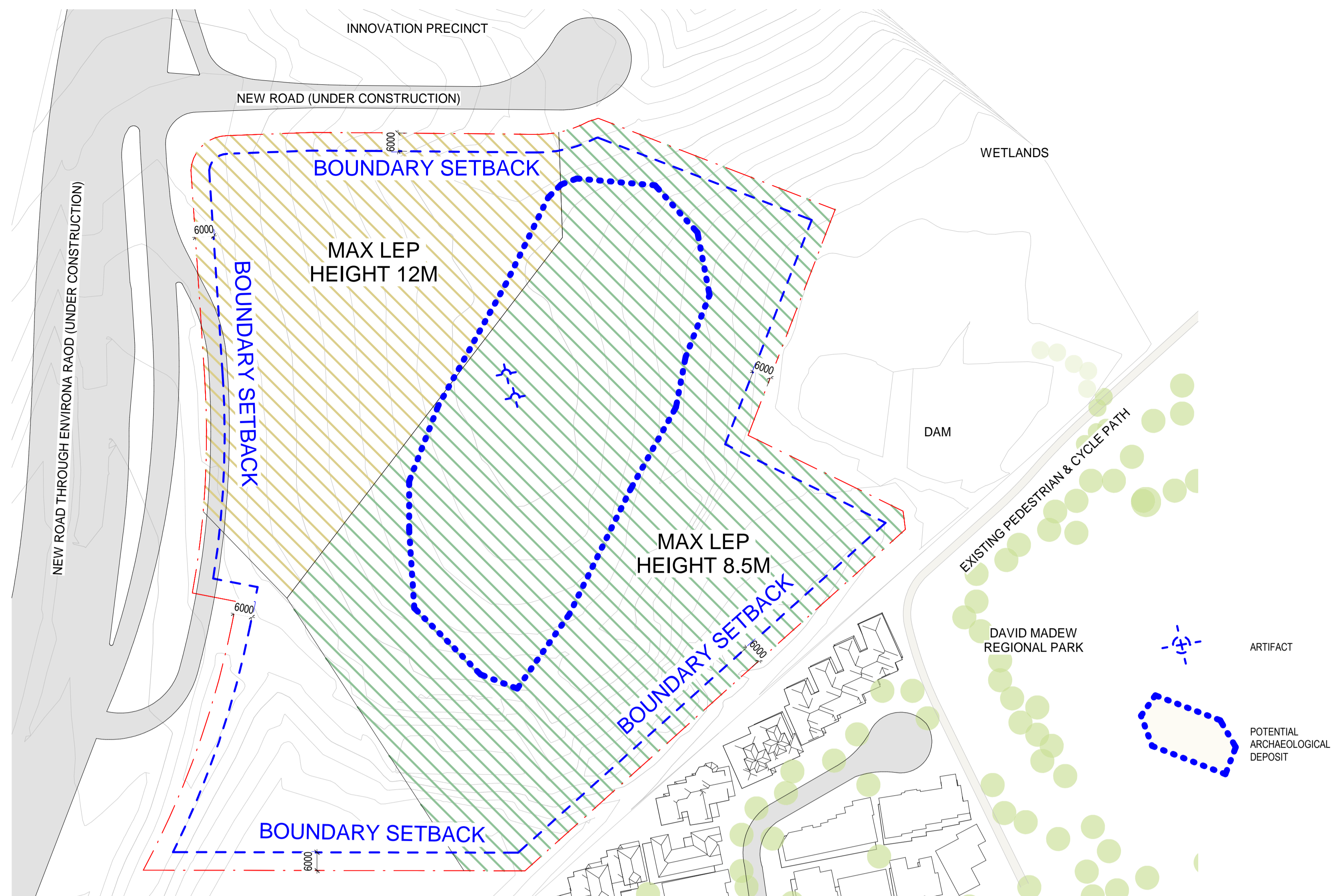
Drawing No.
AR DA HS -0000

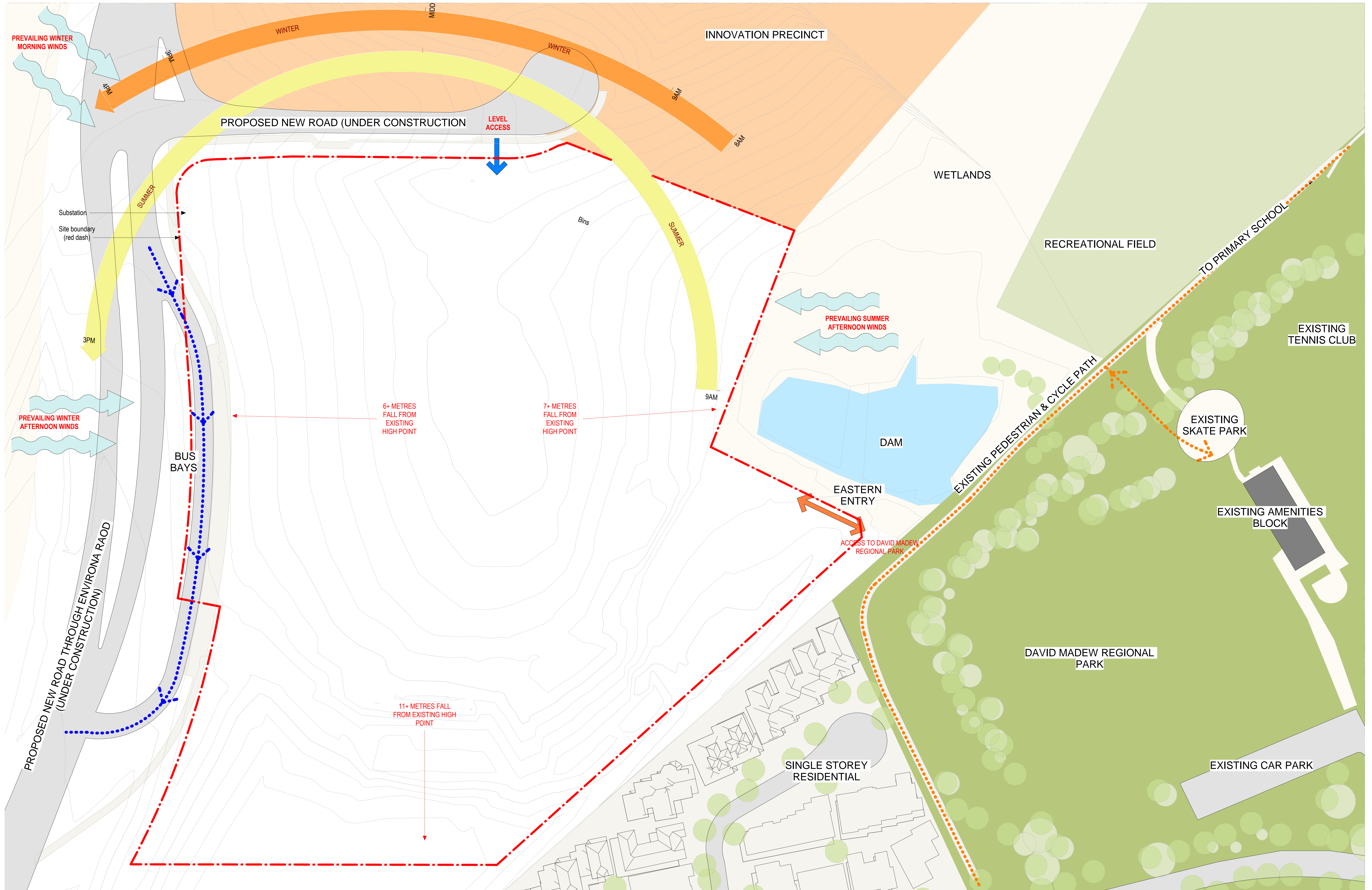


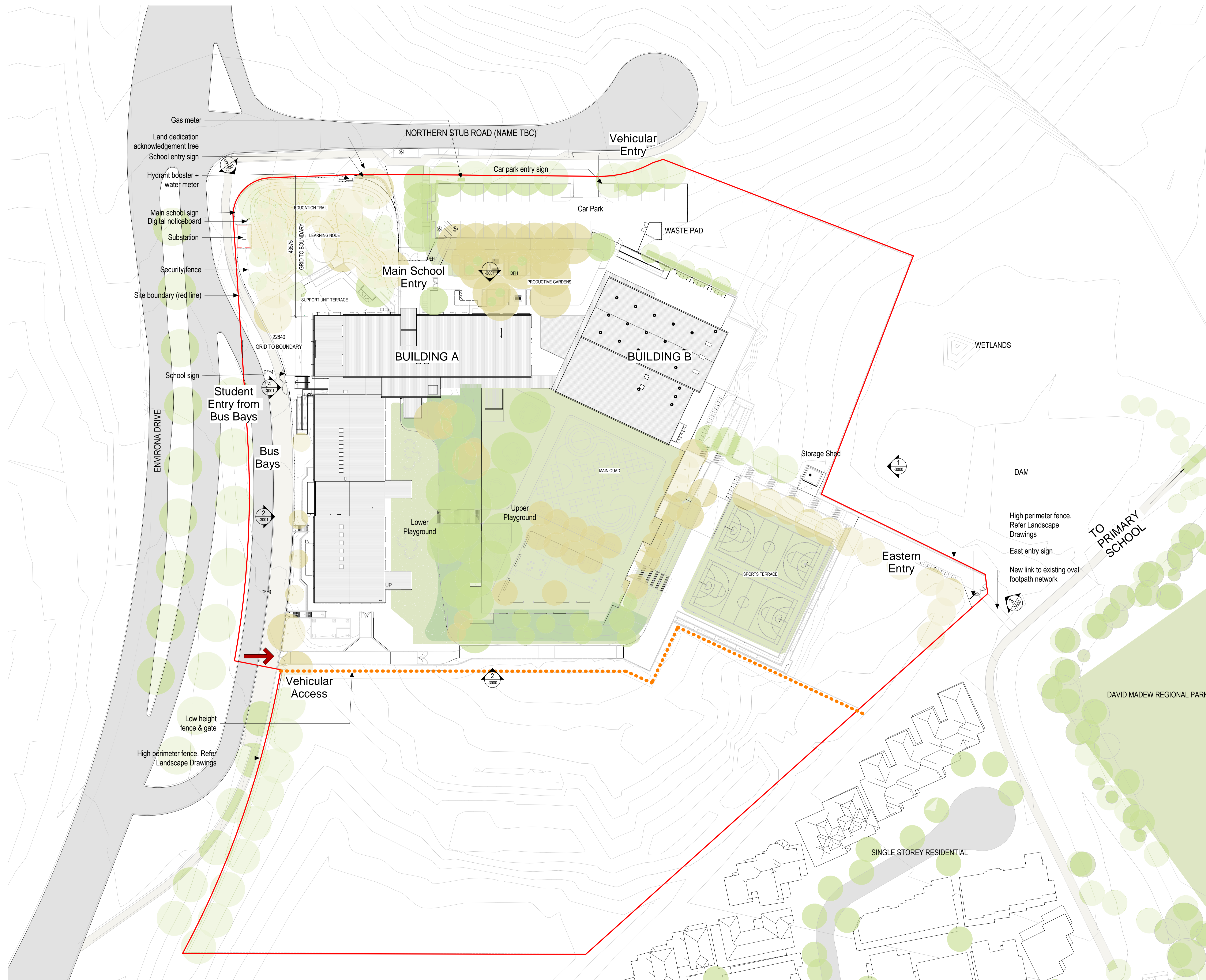
Revision
D

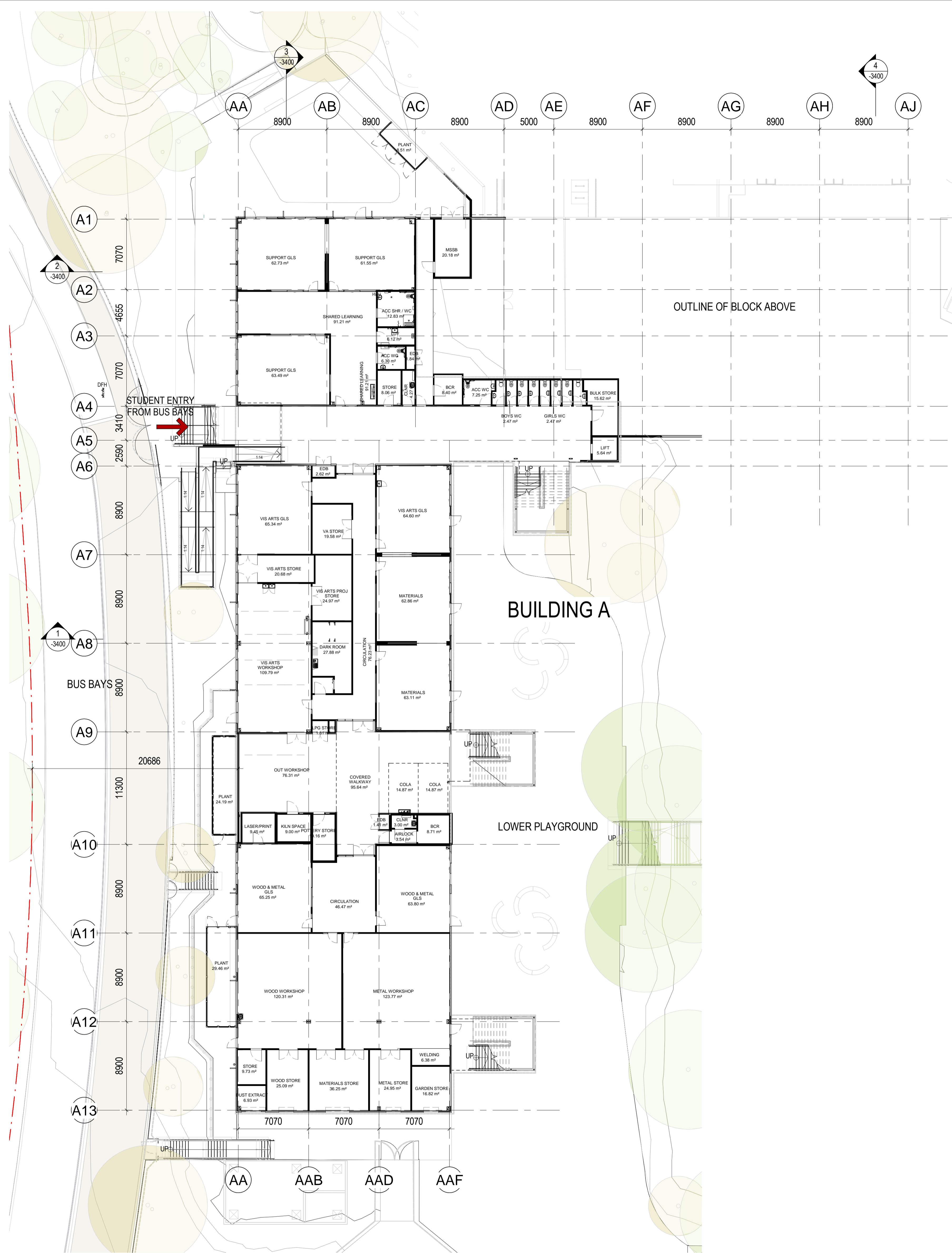
Tanner Kibble Denton Architects Pty Ltd
PO Box 660 Darlinghurst NSW 1300 Australia
Level 11, 19 Foster Street, Surry Hills NSW 2010 Australia
T +61 2 9281 4399
F +61 2 9281 4337
www.tkda.com.au

TKDArchitects
Tanner Kibble Denton















- BAL BALUSTRADE
- FC FIBRE CEMENT, COLOUR 1,2 OR 3
- FCE FENCE
- G GLASS
- MRS METAL ROOF SHEETING
- MSF FIXED METAL SUNHOODS
- MWS METAL WALL SHEETING
- PFS PERFORATED FACADE SCREEN
- PNC PRE-FINISHED METAL CLADDING
- RV ROOF VENTILATORS
- SKL SKYLIGHT



1 OVERALL ELEVATION - EAST
-1010 1:200

BUILDING A

BUILDING B



BUS BAYS

BUILDING A

COLA

BUILDING B

2 OVERALL ELEVATION - SOUTH
-1010 1:200

LEGEND

EXTERNAL CLADDING

- BLOCKS A & B:
FC1 - PRE-FINISHED FIBRE CEMENT
- BLOCKS A & B:
FC2 - PRE-FINISHED FIBRE CEMENT
- BLOCK C:
FC3 - PRE-FINISHED FIBRE CEMENT

POWDER COAT COLOURS

- GENERAL WINDOW & DOOR MULLIONS:
INTERPON MONUMENT
- SUNHOODS:
DULUX - DURATEC INTENSITY - STORM
- SUNHOODS AND BLOCK C FEATURE DOORS:
DULUX - DURATEC INTENSITY - DESERT
- PERFORATED SCREENS:
INTERPON PURE GOLD MATT
- SUNHOODS ROLLER SHUTTERS AND METAL LOUVRES:
INTERPON DRIFTWOOD MATT

ROOFS, GUTTERS AND FLASHING

- GENERALLY:
COLORBOND SURFMIST



SCHOOL NAME ON PERIMETER FENCE AT EAST ENTRY

3 INDICATIVE SIGNAGE ELEVATION - EAST ENTRY
-1010 1:100

CLIENT
NSW Education
School Infrastructure
NSW Department of Education |
School Infrastructure NSW
T+ 02 9561 8287

Project Managers
TSA Management
T+ 61 2 9276 1400
Structural & Civil
M+G Consulting
T+ 61 2 8666 7888
Mechanical, Electrical, Hydraulic, ESD
Norman Disney & Young
T+ 61 2 9928 6900

Landscape Architecture
Context
T+ 61 2 8244 8900

NSW Nominated Architects: Robert Denton Reg. No. 5782; Alex Kibble Reg. No. 6015
Do not scale drawings. Verify all dimensions on site. Notify architect of all discrepancies

Rev	Date	Description	Chkd	Auth
A	06.09.21	Issued For SSDA	KS	RD
B	13.09.21	Re-Issued for SSDA	KS	RD
C	24.03.22	Revisions for RIS	AC	RD

Project
High School in Jerrabomberra
ENVIRONA DRIVE,
JERRABOMBERRA NSW 2619
Drawing Title
EAST AND SOUTH ELEVATIONS

Proj. Dir	Proj. Arch	Drawn	Sheet
RD	KS	JL	B1

Job No. 200095
Status DA
Date 21.05.21
Scale As indicated

Tanner Kibble Denton Architects Pty Ltd
PO Box 660 Darlinghurst NSW 1300 Australia
Level 11, 19 Foster Street, Surry Hills NSW 2010 Australia
T +61 2 9281 4399
F +61 2 9281 4337
www.tkda.com.au

TKDArchitects
Tanner Kibble Denton

Drawing No. **AR DA HS -3000**

Revision **C**

- BAL BALUSTRADE
- FC FIBRE CEMENT, COLOUR 1,2 OR 3
- FCE FENCE
- G GLASS
- MRS METAL ROOF SHEETING
- MSF FIXED METAL SUNHOODS
- MWS METAL WALL SHEETING
- PFS PERFORATED FACADE SCREEN
- PMC PRE-FINISHED METAL CLADDING
- RV ROOF VENTILATORS
- SKL SKYLIGHT



BUILDING B

COLA

BUILDING A

1 OVERALL ELEVATION - NORTH
1:200



BUILDING A

2 OVERALL ELEVATION - WEST
1:200



GRAPHICS TBC
(TO INCLUDE NAME OF SCHOOL
WITH YEAR OF COMPLETION -
TEXT SIZE MIN. 150MM)
DIGITAL SCREEN

LVL 01
FFL 608140

LVL GRD
FFL 604240

LVL LWR GRD
FFL 600300



LVL 01
FFL 608140

SCHOOL NAME ON BUILDING BEYOND

LVL GRD
FFL 604240

LVL LWR GRD
FFL 600300

3 INDICATIVE SIGNAGE ELEVATION - NW CORNER
1:100

4 INDICATIVE SIGNAGE ELEVATION - WEST SIDE
1:100

LEGEND

EXTERNAL CLADDING

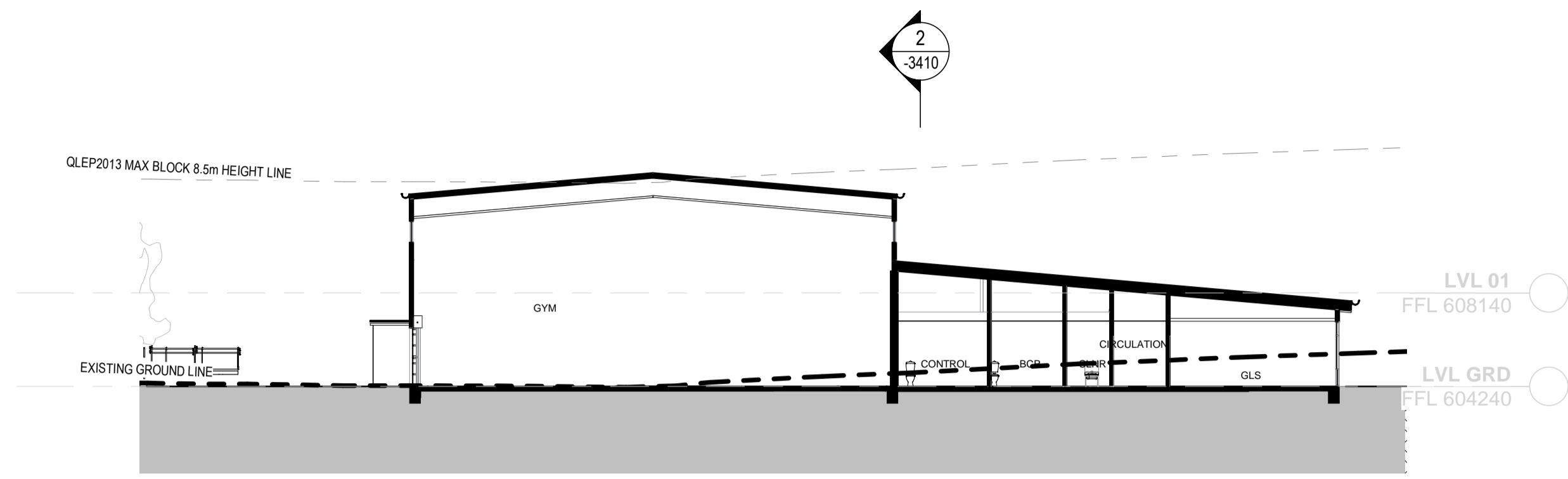
- BLOCKS A & B:
FC1- PRE-FINISHED FIBRE CEMENT
- BLOCKS A & B:
FC2- PRE-FINISHED FIBRE CEMENT
- BLOCK C:
FC3- PRE-FINISHED FIBRE CEMENT

POWDER COAT COLOURS

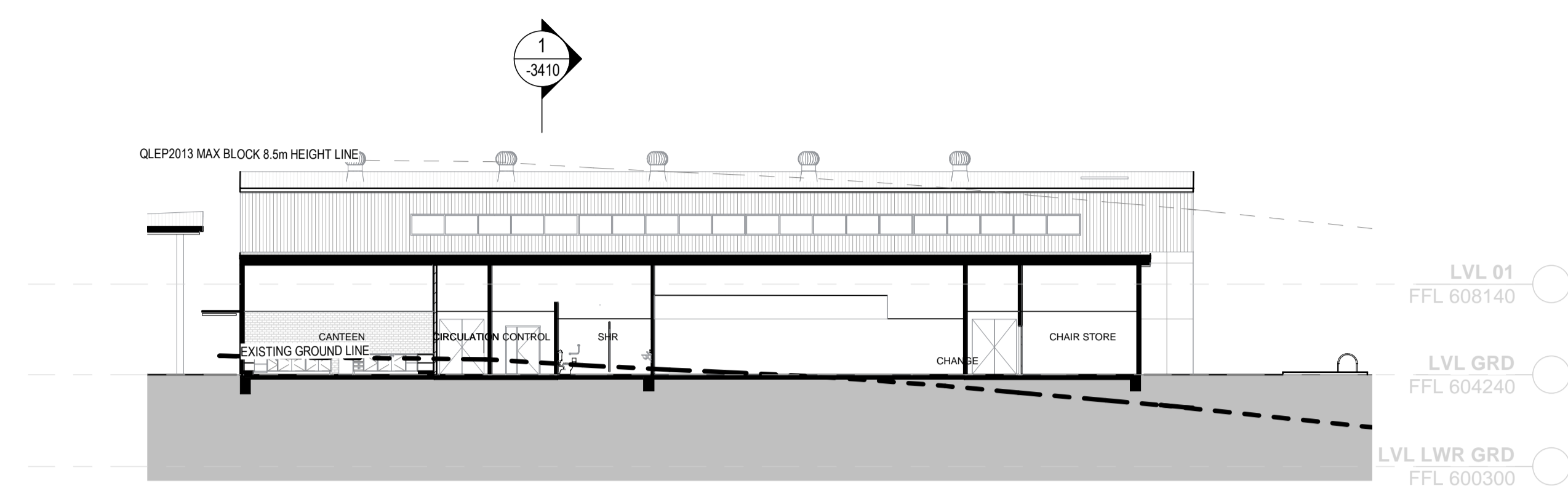
- GENERAL WINDOW & DOOR MULLIONS:
INTERPON MONUMENT
- SUNHOODS:
DULUX - DURATEC INTENSITY - STORM
- SUNHOODS AND BLOCK C FEATURE DOORS:
DULUX - DURATEC INTENSITY - DESERT
- PERFORATED SCREENS:
INTERPON PURE GOLD MATT
- SUNHOODS ROLLER SHUTTERS AND METAL LOUVRES:
INTERPON DRIFTWOOD MATT

ROOFS, GUTTERS AND FLASHING

- GENERALLY:
COLORBOND SURFMIST



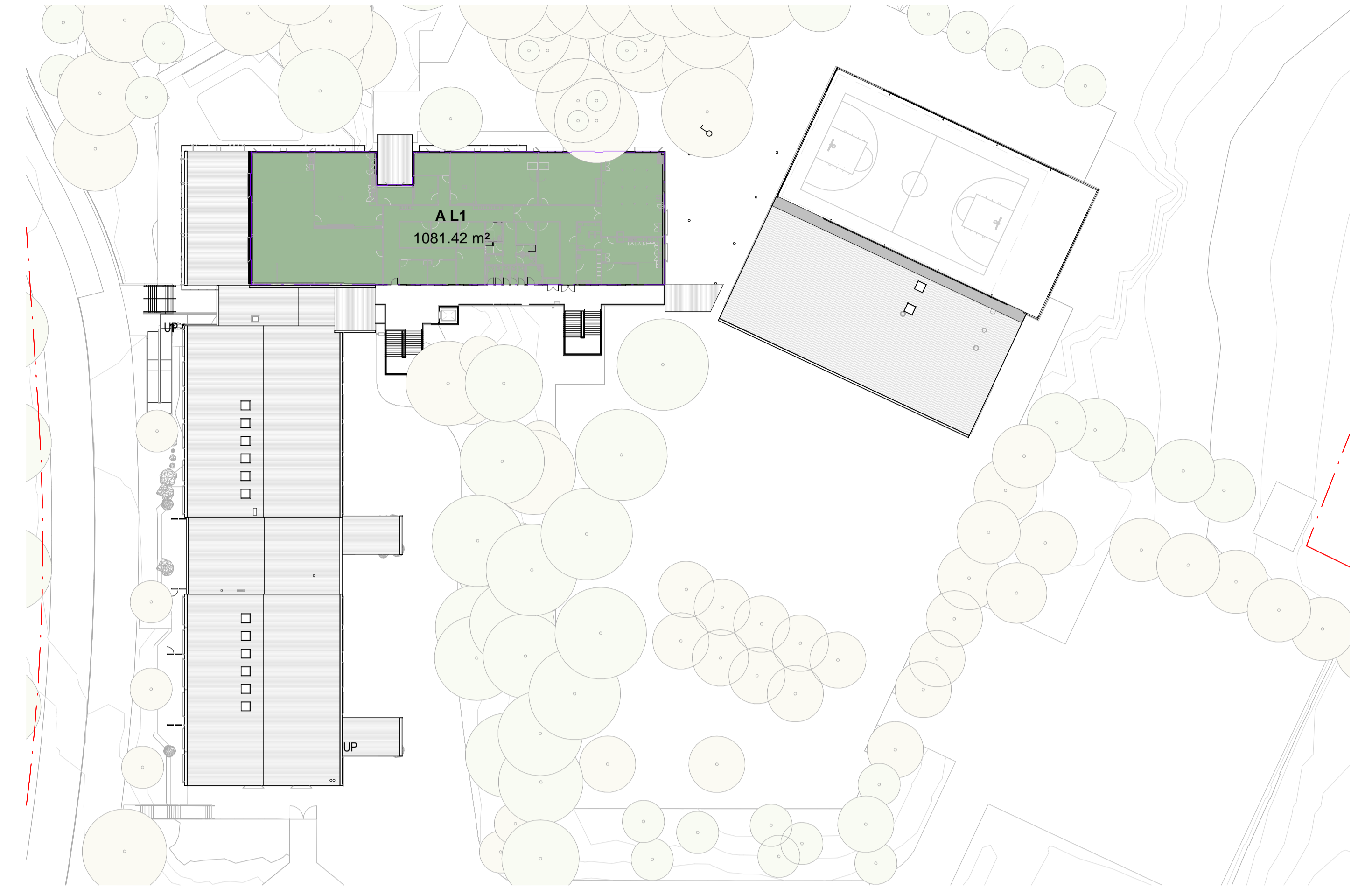
1
-2000
BLOCK B - SECTION
1 : 200



2
-2000
BLOCK B - SECTION
1 : 200



1 LOWER GROUND

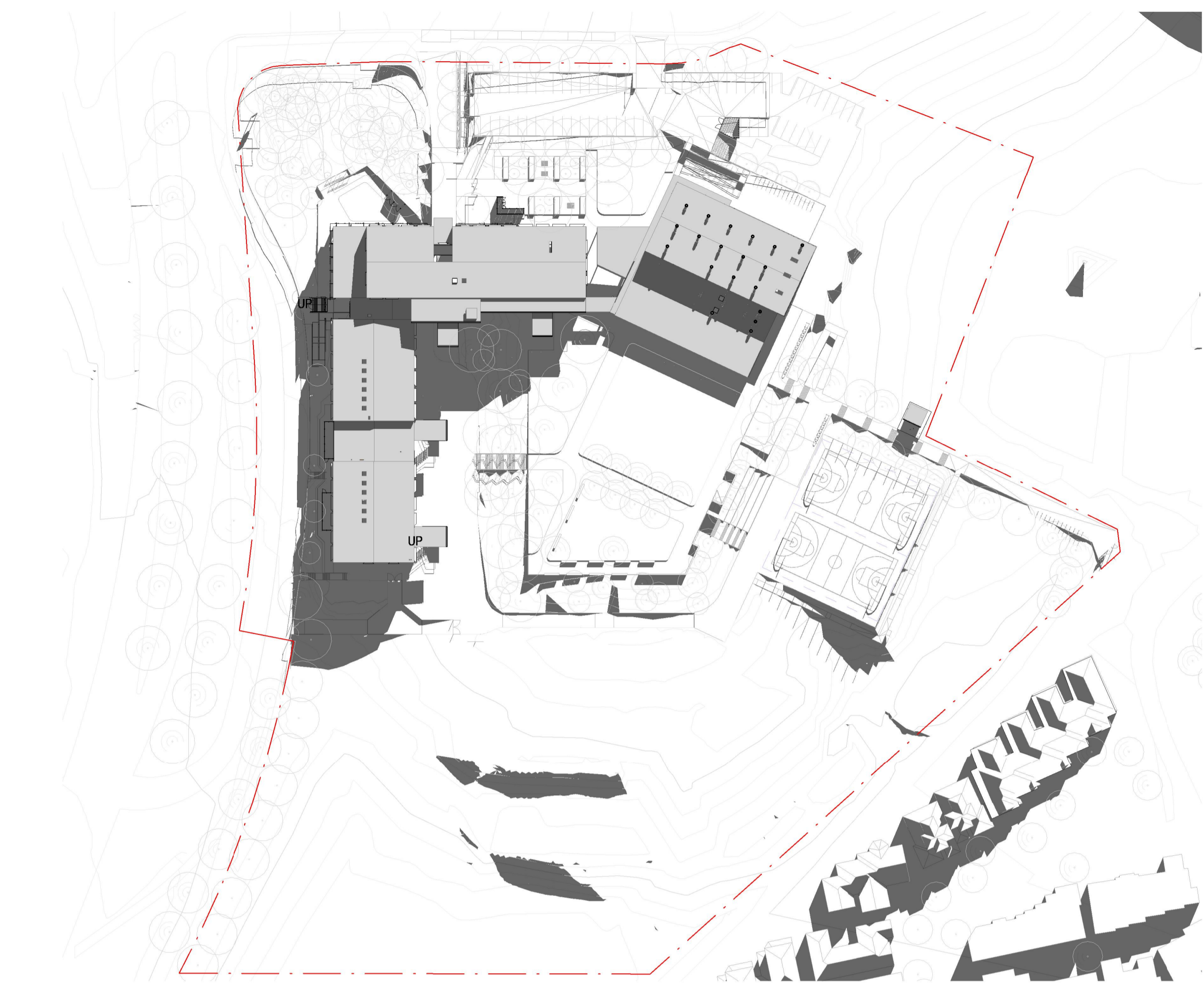


3 LEVEL 1

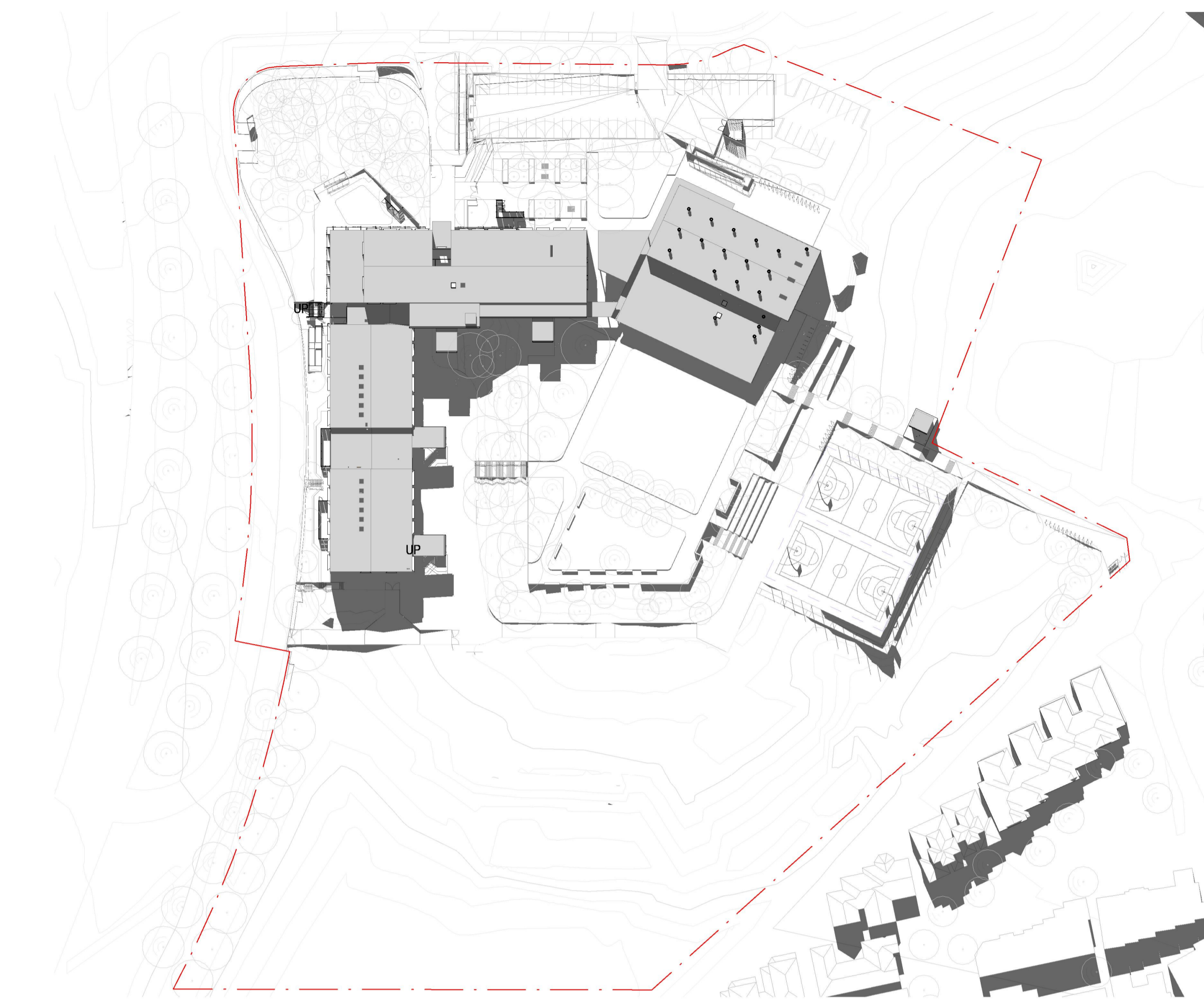


2 LVL GRD

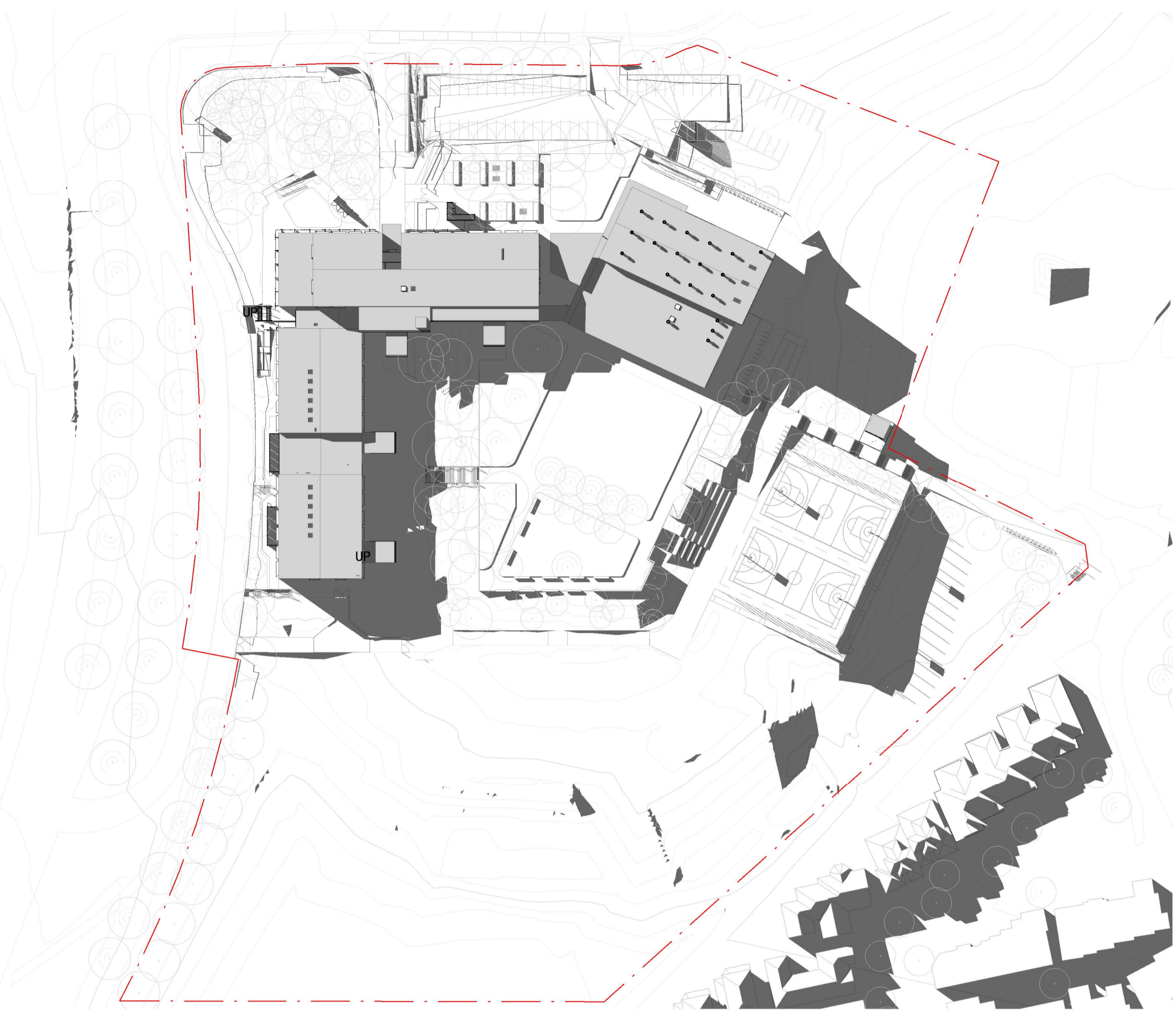
GFA		
Building Name	Name	Area
BUILDING A	A LG	614.38 m ²
BUILDING A	A LG	563.25 m ²
BUILDING A	A LG	446.15 m ²
BUILDING A	A GRD	503.66 m ²
BUILDING A	A GRD	566.37 m ²
BUILDING A	A GRD	610.37 m ²
BUILDING A	A GRD	638.00 m ²
BUILDING A	A L1	1081.42 m ²
BUILDING A		5023.59 m ²
BUILDING B	B GRD	1512.57 m ²
BUILDING B		1512.57 m ²
STORAGE SHED	STORAGE SHED	14.56 m ²
STORAGE SHED		14.56 m ²



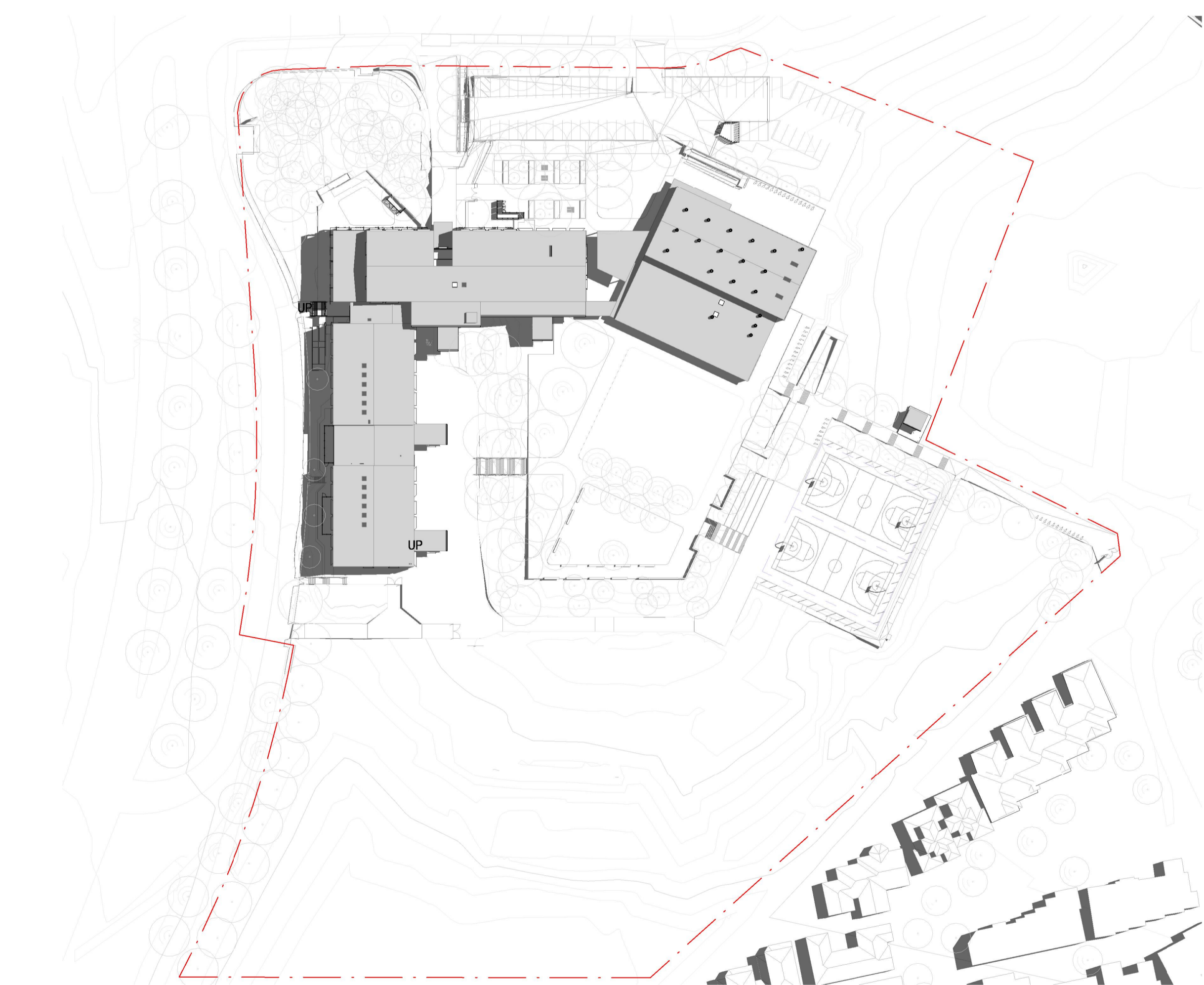
1 JUNE 21 - 9AM



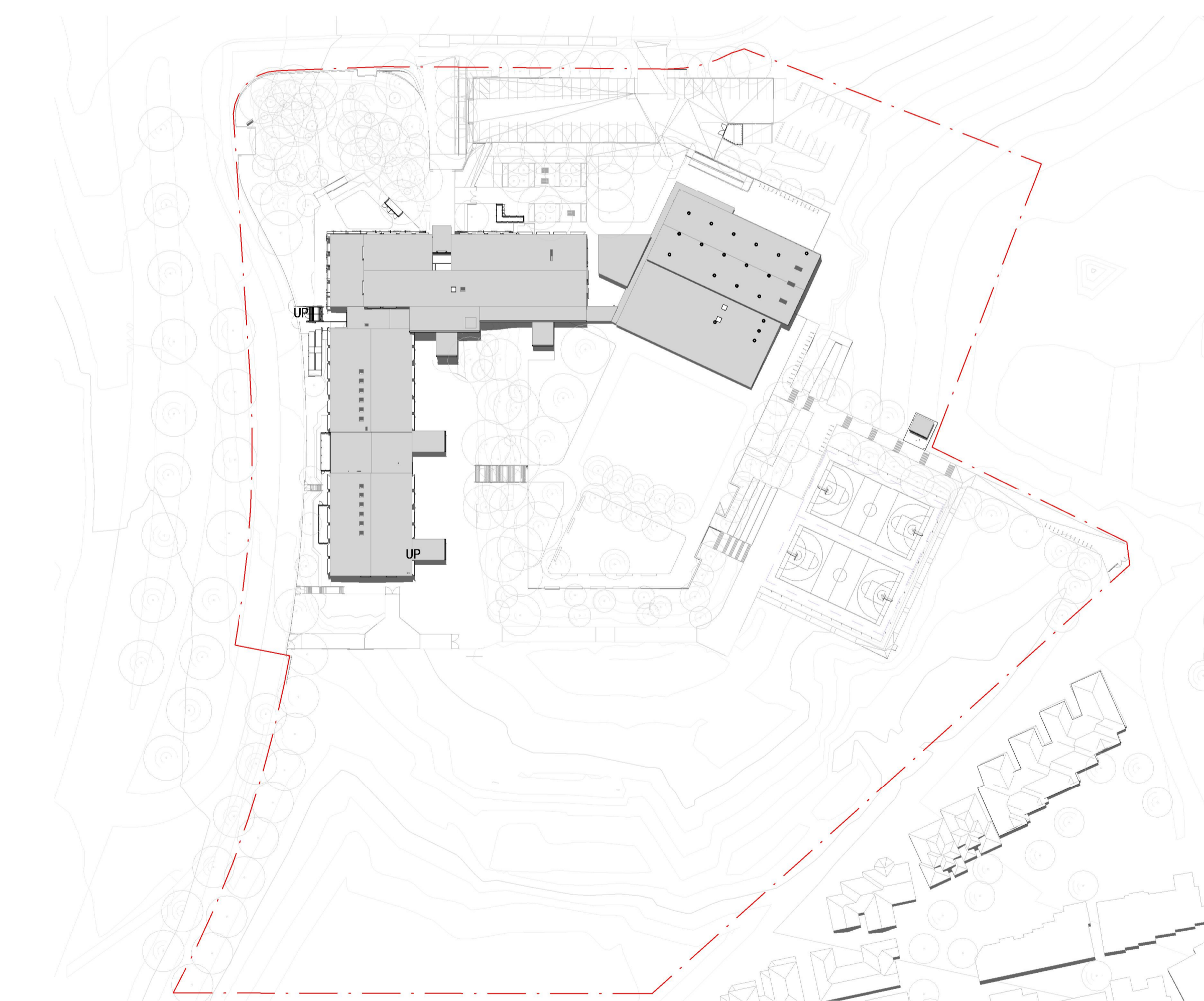
2 JUNE 21 - 12PM



3 JUNE 21 3PM



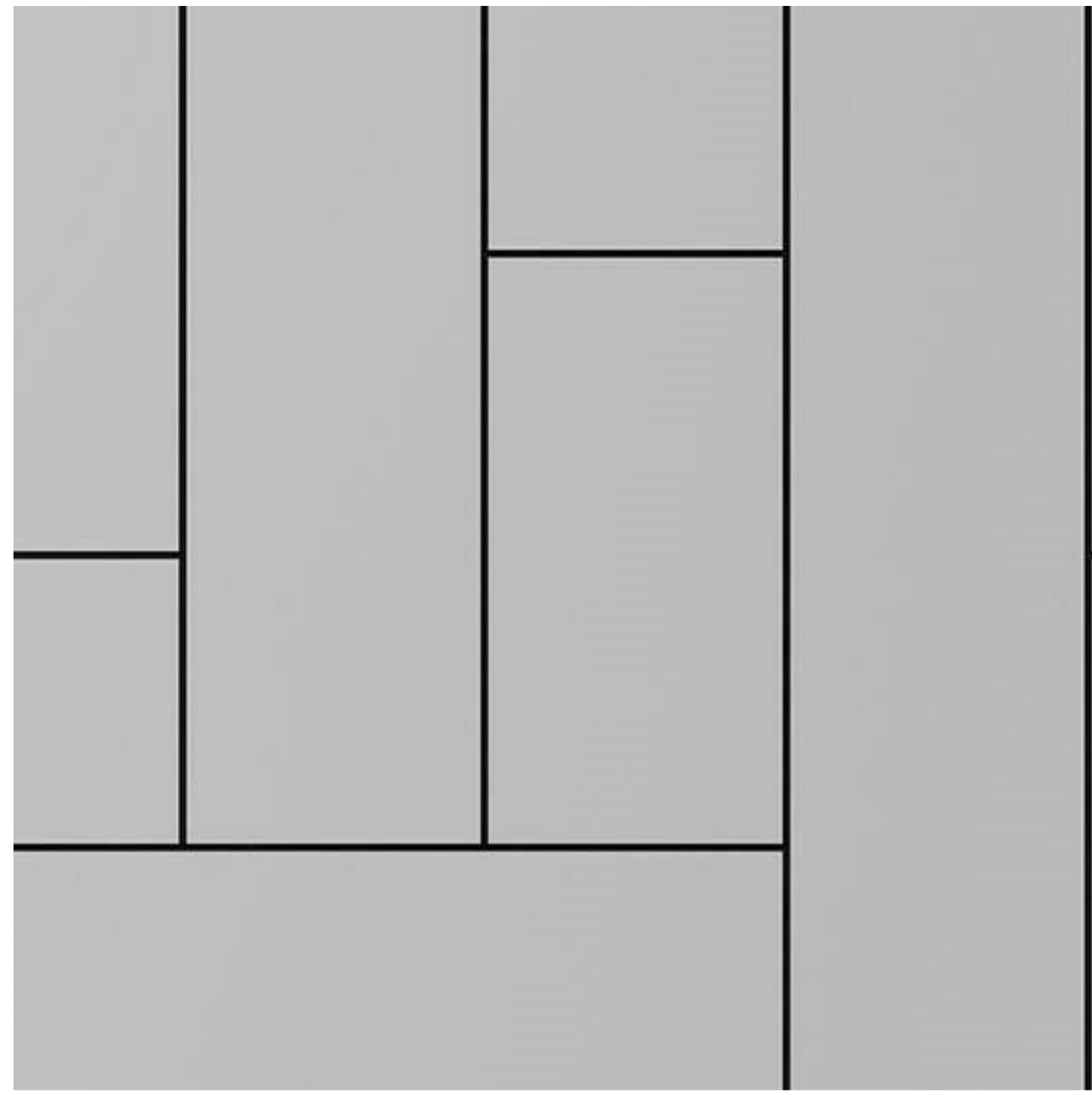
4 DEC 21 - 9AM



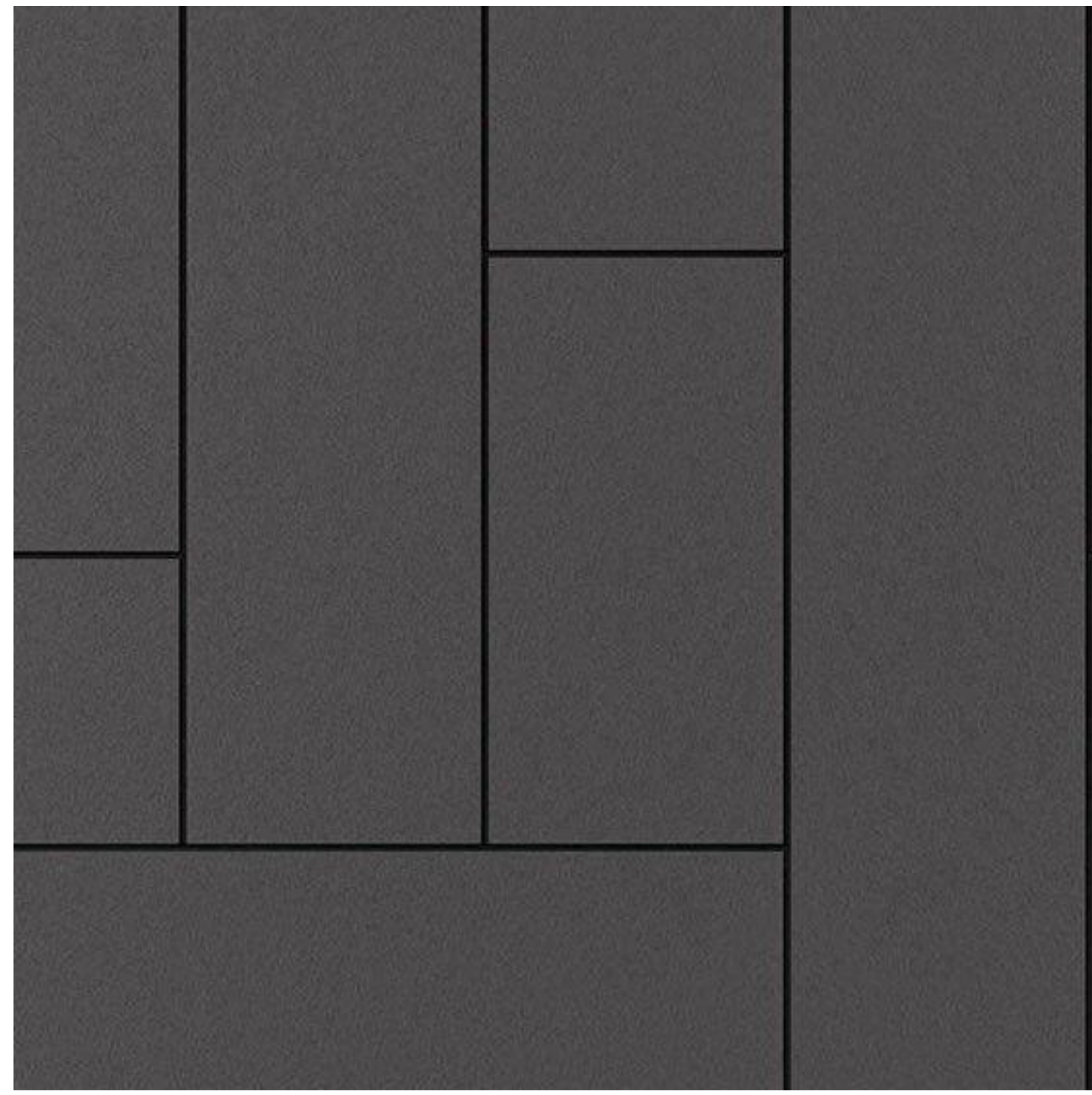
5 DEC 21 - 12PM



6 DEC 21 - 3PM



FC1 PRE-FINISHED FIBRE CEMENT - EXTERNAL WALL GENERALLY



FC2 PRE-FINISHED FIBRE CEMENT - EXTERNAL WALL



FC3 PRE-FINISHED FIBRE CEMENT - EXTERNAL WALL - BLOCK C



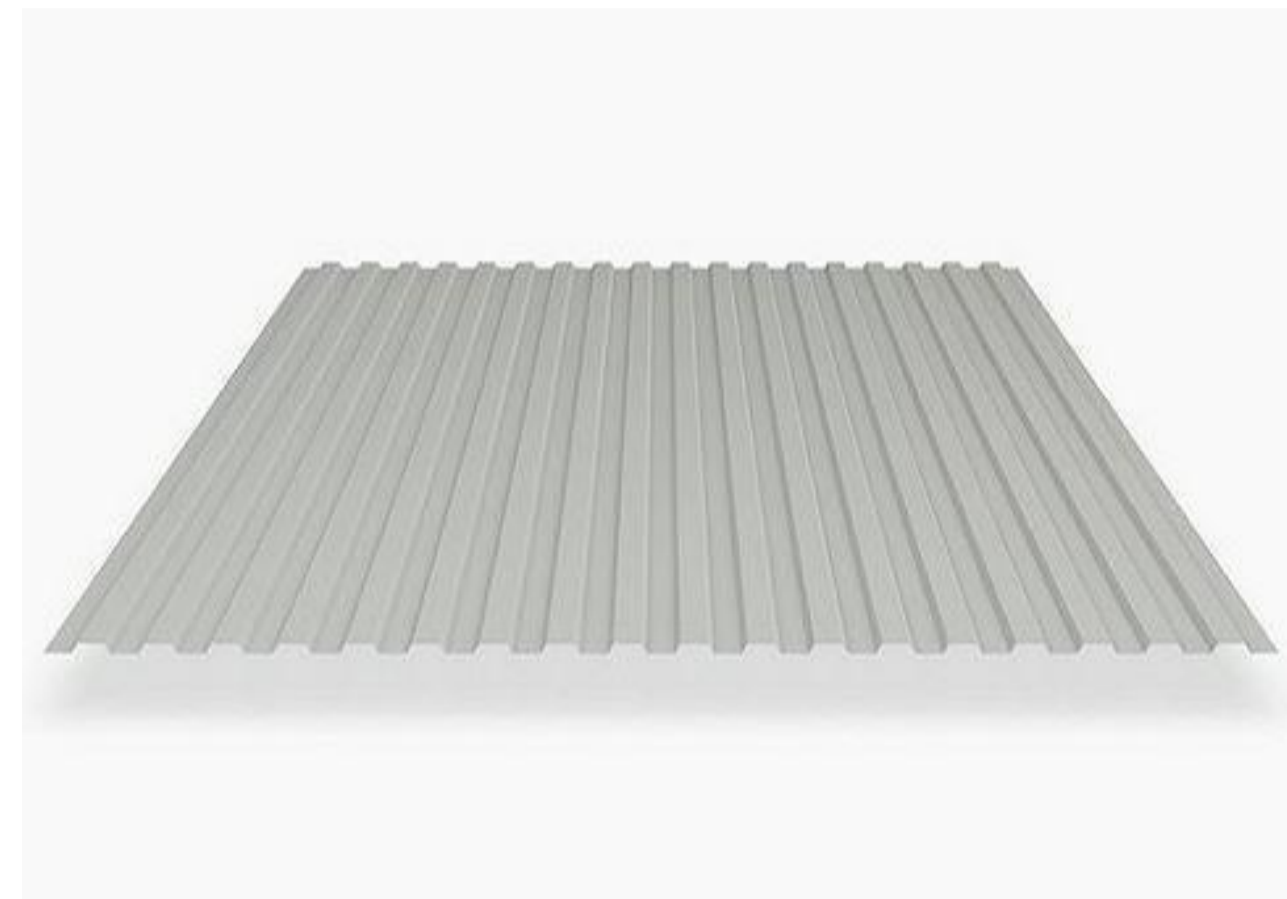
MSF PRE-FINISHED ALUMINIUM BOX SECTIONS - SUNSHADES



MRS1 METAL ROOF SHEETING



POWDER COAT METAL FINISHES



MWS1 METAL WALL SHEETING



BAL1 HOT DIP GALVANISED STEEL PLATES - BALUSTRADES



FCE1 FOLDED, PERFORATED ALUMINIUM PANELS - SCREENS



VIEW: NORTH WEST CORNER



VIEW: WESTERN ELEVATION



VIEW: LOWER PLAYGROUND



VIEW: MAIN ENTRY OVERVIEW



VIEW: MAIN ENTRY



VIEW: UPPER PLAYGROUND