

[illegible]

REFER TO THE FOLLOWING DRAWING SETS FOR SPECIFIC PACKAGE DETAIL AND INFORMATION:

- AREA SERIES: FIRM COMPACTING/PAVING PLANS
- AREA SERIES: CONCRETE OUTLINE PLANS
- AREA SERIES: BOWL, PLANS
- AREA SERIES: REFLECTED CEILING PLANS
- AREA SERIES: FLOOR & WALL FINISHES PLANS
- AREA SERIES: MAINTENANCE & PARTITION PLANS
- AREA SERIES: INTERIOR CEILING PLANS
- AREA SERIES: FACING CLADDING ELEVATIONS
- AREA SERIES: PRELIM CLADDING ELEVATIONS
- AREA SERIES: SLAB & PARTITION & SHOW/POOR LEADING
- AREA SERIES: EXTERIOR ENVIRONMENT, SCREEN ELEVATIONS
- AREA SERIES: BOWL, DETAILS
- AREA SERIES: CORE DETAIL
- AREA SERIES: STAIR DETAILS
- AREA SERIES: BALUSTRADE & RAILING DETAILS
- AREA SERIES: FLOOR DETAIL
- AREA SERIES: IN-IT WALL DRAWINGS FOR ACCESS PANELS IN IN-IT AREAS

[illegible]

STRUCTURE NOTES:

STRUCTURAL ELEMENTS SHOWN IN ARCHITECTURAL DRAWINGS ARE INDICATIVE ONLY AND INCLUDED FOR SPATIAL CO-ORDINATION PURPOSES ONLY.

FOR FULL STRUCTURAL DESIGN INCLUDING SUPERSTRUCTURE, BOW, STRUCTURE, SUBSTRUCTURE, SIZES, DETAILS, SLAB SIZES & DETAILS, SUB-SOIL & SHORING DETAILS, COLLAR / STRUCTURAL / PLATE SIZES & DETAIL REFER STRUCTURAL ENGINEER'S REPORT.

FINAL ENGINEERING CONNECTIONS AND MEMBER TYPES TO MATCH ARCHITECTURAL INTENT.

**NOTES:**

REFER TO SERVICE ENGINEER'S DRAWINGS FOR LOCATION OF 6.0" RIGID AND SHORTING DUCTS, SHOWN AS INHIBITED DOWNGRIDS FOR CO-ORDINATION OF SLAB IN-PLACE, BLOCKWORK AND JOINTED JOBS.

REFER TO INTERNAL ENGINEER'S SEPARATE PLAN FOR LOCATION OF SUB-FLOOR SERVICES.

REFER TO DDO SCHEDULES FOR DOOR HARDWARE AND FURNITURE DETAILS.

REFER TO MECHANICAL INGRESS DETAILS AND SHOP DRAWINGS TO CONFORM SPECIES OF ALL DUCT PENETRATIONS AND LOCATE OPENING SIZES.

REFER TO MECHANICAL ENGINEER'S DETAILS FOR PENETRATIONS AND BUILDING IN-OF DUCTS, GRILLES, PL CEILING PLUMBING.

BUILD IN-LEVEL OPENINGS FOR PLUMBING IN CEILING SPACES. REFER TO MECHANICAL INGRESS DET.

FOR ADDITIONAL, SEND TO INFORMATION WHERE NO DIMENSIONING SHOWN, REFER TO REFERENCE TAGS FOR DETAILED ARCHITECTURAL, DRAWINGS.

REFER TO ARCHITECTURAL, SPECIFICATIONS, SCHEDULES AND ROOM DATA SHEETS FOR FLOOR AND FINISHES FOR FURNITURE DETAIL, AND FOR PENETRATIONS.



PRINT IN COLOUR

**we are insw** Infrastructure  
New South Wales

**Cox Architecture**  
Level 6, 155 Clarence Street,  
Sydney, NSW 2000, Australia  
T + 61 2 9267 9509  
F + 61 2 9264 5844  
[www.coxarchitecture.com.au](http://www.coxarchitecture.com.au)

**Nominated Architects**  
Joe Agius no. 6491  
Russell Lee no. 6367

**COX**

**Consultants/Subcontractors**

**NAME:**

**ADDRESS:**

**TEL/FAX:**

**WEBSITE:**

**EMAIL:**

COX

Discipline	
------------	--

Project No.	218018.00
-------------	-----------

Project

Sydney Football Stadium  
Redevelopment

Driver Ave, Moore Park  
NSW, 2021

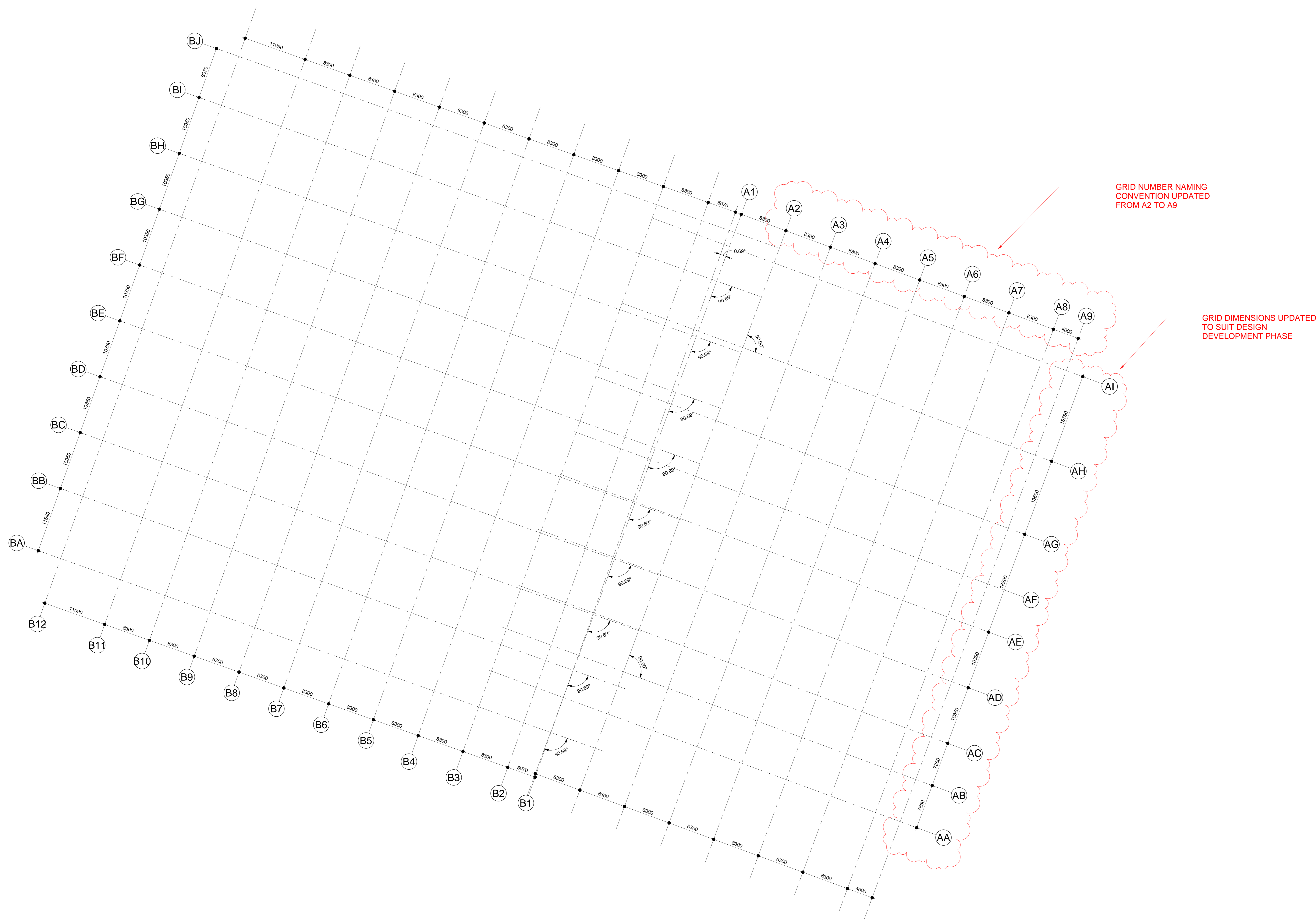
Document Control Status:  
**DETAILED DESIGN**

Document Control Status:

FOR INFORMATION

Drawing Title	ARCHITECTURAL SERVICES - GRID SETOUT PLAN
---------------	---

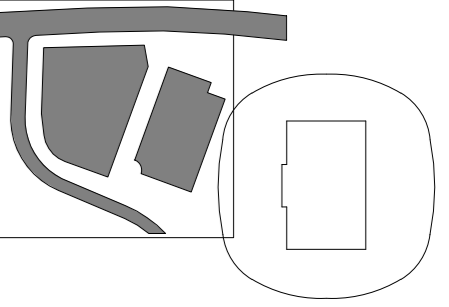
AS DRAWING SHEET	<b>Drawn:</b> <b>Scale:</b> 1 : 250 <b>Date:</b> 17/12/20 <b>Revision:</b> <b>North:</b>
<b>Checked by:</b> AY	
<b>Designed by:</b> IK	
<b>Approved by:</b> AY	
<b>Drawing Number:</b>	
A04.00.00	











## LOCATION PLAN

[illegible]

REF TO THE FOLLOWING DRAWING SETS FOR SPECIFIC PACKAGE DETAIL AND INFORMATION

114	30808S - FIBRE CONCRETE/CONCRETE PILING
120	30809S - CONCRETE CULVERT PILING
121	30810S - BOWL PILING
122	30811S - IMPLICATION CHALM PILING
127	30815S - FLOOR & WALL FINISHES PILING
128	30816S - MASONRY & PARTITION PILING
129	30818S - WATERPROOFING PILING
130	30819S - PACKS CLADDING PILING
132	30825S - PRECAST CLADDING ELEVATIONS
133	30826S - GLAZED CLADDING & UNIFORMITY GLAZING
136	30827S - ACOUSTIC/ENVIRONMENTAL SCREEN ELEVATIONS
137	30828S - BOWL DETAILS
138	30829S - STAIR DETAILS
139	30830S - BALUSTRADE & RAILING DETAILS
140	30831S - FACADE DETAILS
146	30832S - PARTIAL AND ORANGE FOR ACCESS PANELS IN PART AREAS
147	30833S - PARTIAL AND ORANGE

**NOTES:** (1) SEE SPECIALTY CONSULTANTS DRAWINGS AND SPECIFICATIONS FOR ALL OTHER DISCIPLINES REFLECTING CONCURRENT DRAWING FOR DETAILS/LEVELS OF ALL KITCHENS, BAR AND FOOD SERVICE AREAS.

(2) REFER TO LANDSCAPE ARCHITECTS DRAWINGS FOR DETAILS, FINISHES AND EXTERNAL SERVICES.

(3) REFER TO THE BUILDING PLAN FOR FINISHES.

(4) FOR ADDITIONAL SITES INFORMATION FOR VET AREAS, COURTS, ETC. REFER TO REFERENCE TAGS FOR ARCHITECTURAL ORGANIZATION.

(5) THE ARCHITECT IS TO NOTIFY OF ANY OMISSIONS/DISCREPANCIES.

STRUCTURAL ELEMENTS SHOWN IN ARCHITECTURAL DRAWINGS ARE INDICATIVE ONLY AND INCLUDED FOR SPATIAL COORDINATION PURPOSES ONLY.

ON-PLANT STRUCTURAL DESIGN INCLUDING SUPERSTRUCTURE, BOWL STRUCTURE, SUBSTRUCTURE, SIZES & DETAILS, SLAB SIZES & DETAILS, SUB-SOIL & SHORING DETAILS, COLUMN / STRUCTURAL WALL SIZES & DETAILS (REFER STRUCTURAL ENGINEER'S REPORT).

ON-PLANT ENGINEERING CONNECTIONS AND MEMBER TYPES TO MATCH ARCHITECTURAL INTENT.

REFERS TO ENGINEER'S DRAWINGS FOR LOCATION OF S.O.P. ROOM, SPOUT AND SHOOTING DUCTS. REFERS TO ENGINEER'S DRAWINGS FOR CO-ORDINATION OF BEAM PLACEMENT, LEVELS AND CORRIDOR PENETRATIONS.  
 REFERS TO HYDRAULIC ENGINEER'S SERVICE PLAN FOR LOCATION OF SUB/FLOOR SERVICES.  
 REFERS TO ORDER SCHEDULES FOR DOOR HANDLING AND FURNITURE DETAILS.  
 REFERS TO MECHANICAL ENGINEER'S DRAWINGS AND SHOP DRAWINGS TO CONFIRM SIZES OF ALL DUCT PENETRATIONS AND LOCATE OPENINGS.  
 REFERS TO MECHANICAL ENGINEER'S DETAILS FOR PENETRATIONS AND BUILDING IN OF DUCTS, GRILLES, PLANT AND CEILING LININGS.  
 REFERS TO HIGH LEVEL OPENINGS FOR FANS IN CEILING SPACES. REFERS TO MECHANICAL ENGINEER'S DRAWING.  
 FOR ADDITIONAL SECTOR INFORMATION HEREIN NO DIMENSIONING SHOWN. REFERS TO REFERENCE TAGS TAG 1000, TAG 1001, TAG 1002, TAG 1003, TAG 1004, TAG 1005, TAG 1006, TAG 1007, TAG 1008, TAG 1009, TAG 1010, TAG 1011, TAG 1012, TAG 1013, TAG 1014, TAG 1015, TAG 1016, TAG 1017, TAG 1018, TAG 1019, TAG 1020, TAG 1021, TAG 1022, TAG 1023, TAG 1024, TAG 1025, TAG 1026, TAG 1027, TAG 1028, TAG 1029, TAG 1030, TAG 1031, TAG 1032, TAG 1033, TAG 1034, TAG 1035, TAG 1036, TAG 1037, TAG 1038, TAG 1039, TAG 1040, TAG 1041, TAG 1042, TAG 1043, TAG 1044, TAG 1045, TAG 1046, TAG 1047, TAG 1048, TAG 1049, TAG 1050, TAG 1051, TAG 1052, TAG 1053, TAG 1054, TAG 1055, TAG 1056, TAG 1057, TAG 1058, TAG 1059, TAG 1060, TAG 1061, TAG 1062, TAG 1063, TAG 1064, TAG 1065, TAG 1066, TAG 1067, TAG 1068, TAG 1069, TAG 1070, TAG 1071, TAG 1072, TAG 1073, TAG 1074, TAG 1075, TAG 1076, TAG 1077, TAG 1078, TAG 1079, TAG 1080, TAG 1081, TAG 1082, TAG 1083, TAG 1084, TAG 1085, TAG 1086, TAG 1087, TAG 1088, TAG 1089, TAG 1090, TAG 1091, TAG 1092, TAG 1093, TAG 1094, TAG 1095, TAG 1096, TAG 1097, TAG 1098, TAG 1099, TAG 1100, TAG 1101, TAG 1102, TAG 1103, TAG 1104, TAG 1105, TAG 1106, TAG 1107, TAG 1108, TAG 1109, TAG 1110, TAG 1111, TAG 1112, TAG 1113, TAG 1114, TAG 1115, TAG 1116, TAG 1117, TAG 1118, TAG 1119, TAG 1120, TAG 1121, TAG 1122, TAG 1123, TAG 1124, TAG 1125, TAG 1126, TAG 1127, TAG 1128, TAG 1129, TAG 1130, TAG 1131, TAG 1132, TAG 1133, TAG 1134, TAG 1135, TAG 1136, TAG 1137, TAG 1138, TAG 1139, TAG 1140, TAG 1141, TAG 1142, TAG 1143, TAG 1144, TAG 1145, TAG 1146, TAG 1147, TAG 1148, TAG 1149, TAG 1150, TAG 1151, TAG 1152, TAG 1153, TAG 1154, TAG 1155, TAG 1156, TAG 1157, TAG 1158, TAG 1159, TAG 1160, TAG 1161, TAG 1162, TAG 1163, TAG 1164, TAG 1165, TAG 1166, TAG 1167, TAG 1168, TAG 1169, TAG 1170, TAG 1171, TAG 1172, TAG 1173, TAG 1174, TAG 1175, TAG 1176, TAG 1177, TAG 1178, TAG 1179, TAG 1180, TAG 1181, TAG 1182, TAG 1183, TAG 1184, TAG 1185, TAG 1186, TAG 1187, TAG 1188, TAG 1189, TAG 1190, TAG 1191, TAG 1192, TAG 1193, TAG 1194, TAG 1195, TAG 1196, TAG 1197, TAG 1198, TAG 1199, TAG 1200, TAG 1201, TAG 1202, TAG 1203, TAG 1204, TAG 1205, TAG 1206, TAG 1207, TAG 1208, TAG 1209, TAG 1210, TAG 1211, TAG 1212, TAG 1213, TAG 1214, TAG 1215, TAG 1216, TAG 1217, TAG 1218, TAG 1219, TAG 1220, TAG 1221, TAG 1222, TAG 1223, TAG 1224, TAG 1225, TAG 1226, TAG 1227, TAG 1228, TAG 1229, TAG 1230, TAG 1231, TAG 1232, TAG 1233, TAG 1234, TAG 1235, TAG 1236, TAG 1237, TAG 1238, TAG 1239, TAG 1240, TAG 1241, TAG 1242, TAG 1243, TAG 1244, TAG 1245, TAG 1246, TAG 1247, TAG 1248, TAG 1249, TAG 1250, TAG 1251, TAG 1252, TAG 1253, TAG 1254, TAG 1255, TAG 1256, TAG 1257, TAG 1258, TAG 1259, TAG 1260, TAG 1261, TAG 1262, TAG 1263, TAG 1264, TAG 1265, TAG 1266, TAG 1267, TAG 1268, TAG 1269, TAG 1270, TAG 1271, TAG 1272, TAG 1273, TAG 1274, TAG 1275, TAG 1276, TAG 1277, TAG 1278, TAG 1279, TAG 1280, TAG 1281, TAG 1282, TAG 1283, TAG 1284, TAG 1285, TAG 1286, TAG 1287, TAG 1288, TAG 1289, TAG 1290, TAG 1291, TAG 1292, TAG 1293, TAG 1294, TAG 1295, TAG 1296, TAG 1297, TAG 1298, TAG 1299, TAG 1300, TAG 1301, TAG 1302, TAG 1303, TAG 1304, TAG 1305, TAG 1306, TAG 1307, TAG 1308, TAG 1309, TAG 1310, TAG 1311, TAG 1312, TAG 1313, TAG 1314, TAG 1315, TAG 1316, TAG 1317, TAG 1318, TAG 1319, TAG 1320, TAG 1321, TAG 1322, TAG 1323, TAG 1324, TAG 1325, TAG 1326, TAG 1327, TAG 1328, TAG 1329, TAG 1330, TAG 1331, TAG 1332, TAG 1333, TAG 1334, TAG 1335, TAG 1336, TAG 1337, TAG 1338, TAG 1339, TAG 1340, TAG 1341, TAG 1342, TAG 1343, TAG 1344, TAG 1345, TAG 1346, TAG 1347, TAG 1348, TAG 1349, TAG 1350, TAG 1351, TAG 1352, TAG 1353, TAG 1354, TAG 1355, TAG 1356, TAG 1357, TAG 1358, TAG 1359, TAG 1360, TAG 1361, TAG 1362, TAG 1363, TAG 1364, TAG 1365, TAG 1366, TAG 1367, TAG 1368, TAG 1369, TAG 1370, TAG 1371, TAG 1372, TAG 1373, TAG 1374, TAG 1375, TAG 1376, TAG 1377, TAG 1378, TAG 1379, TAG 1380, TAG 1381, TAG 1382, TAG 1383, TAG 1384, TAG 1385, TAG 1386, TAG 1387, TAG 1388, TAG 1389, TAG 1390, TAG 1391, TAG 1392, TAG 1393, TAG 1394, TAG 1395, TAG 1396, TAG 1397, TAG 1398, TAG 1399, TAG 1400, TAG 1401, TAG 1402, TAG 1403, TAG 1404, TAG 1405, TAG 1406, TAG 1407, TAG 1408, TAG 1409, TAG 1410, TAG 1411, TAG 1412, TAG 1413, TAG 1414, TAG 1415, TAG 1416, TAG 1417, TAG 1418, TAG 1419, TAG 1420, TAG 1421, TAG 1422, TAG 1423, TAG 1424, TAG 1425, TAG 1426, TAG 1427, TAG 1428, TAG 1429, TAG 1430, TAG 1431, TAG 1432, TAG 1433, TAG 1434, TAG 1435, TAG 1436, TAG 1437, TAG 1438, TAG 1439, TAG 1440, TAG 1441, TAG 1442, TAG 1443, TAG 1444, TAG 1445, TAG 1446, TAG 1447, TAG 1448, TAG 1449, TAG 1450, TAG 1451, TAG 1452, TAG 1453, TAG 1454, TAG 1455, TAG 1456, TAG 1457, TAG 1458, TAG 1459, TAG 1460, TAG 1461, TAG 1462, TAG 1463, TAG 1464, TAG 1465, TAG 1466, TAG 1467, TAG 1468, TAG 1469, TAG 1470, TAG 1471, TAG 1472, TAG 1473, TAG 1474, TAG 1475, TAG 1476, TAG 1477, TAG 1478, TAG 1479, TAG 1480, TAG 1481, TAG 1482, TAG 1483, TAG 1484, TAG 1485, TAG 1486, TAG 1487, TAG 1488, TAG 1489, TAG 1490, TAG 1491, TAG 1492, TAG 1493, TAG 1494, TAG 1495, TAG 1496, TAG 1497, TAG 1498, TAG 1499, TAG 1500, TAG 1501, TAG 1502, TAG 1503, TAG 1504, TAG 1505, TAG 1506, TAG 1507, TAG 1508, TAG 1509, TAG 1510, TAG 1511, TAG 1512, TAG 1513, TAG 1514, TAG 1515, TAG 1516, TAG 1517, TAG 1518, TAG 1519, TAG 1520, TAG 1521, TAG 1522, TAG 1523, TAG 1524, TAG 1525, TAG 1526, TAG 1527, TAG 1528, TAG 1529, TAG 1530, TAG 1531, TAG 1532, TAG 1533, TAG 1534, TAG 1535, TAG 1536, TAG 1537, TAG 1538, TAG 1539, TAG 1540, TAG 1541, TAG 1542, TAG 1543, TAG 1544, TAG 1545, TAG 1546, TAG 1547, TAG 1548, TAG 1549, TAG 1



we are **inSW** Infrastructure  
New South Wales

**Cox Architecture**  
Level 8, 155 Clarence Street,  
Sydney, NSW 2000, Australia  
T + 61 2 9267 9599  
F + 61 2 9264 5844  
[www.coxarchitecture.com.au](http://www.coxarchitecture.com.au)

**Nominated Architects**  
Joe Agius no. 6491  
Russell Lee no. 6367

COX

Consultants/Subcontractors
<p>1. <b>Design:</b> [Name of Design Firm]</p> <p>2. <b>Construction:</b> [Name of Construction Firm]</p> <p>3. <b>General Contractor:</b> [Name of General Contractor]</p> <p>4. <b>Architect:</b> [Name of Architect]</p> <p>5. <b>Engineer:</b> [Name of Engineer]</p> <p>6. <b>Interior Designer:</b> [Name of Interior Designer]</p> <p>7. <b>Landscaper:</b> [Name of Landscaper]</p> <p>8. <b>Electrician:</b> [Name of Electrician]</p> <p>9. <b>Plumber:</b> [Name of Plumber]</p> <p>10. <b>Painter:</b> [Name of Painter]</p> <p>11. <b>Roofing Contractor:</b> [Name of Roofing Contractor]</p> <p>12. <b>Foundation Contractor:</b> [Name of Foundation Contractor]</p> <p>13. <b>HVAC Contractor:</b> [Name of HVAC Contractor]</p> <p>14. <b>Fire Alarm Contractor:</b> [Name of Fire Alarm Contractor]</p> <p>15. <b>Security System Contractor:</b> [Name of Security System Contractor]</p> <p>16. <b>IT/Network Contractor:</b> [Name of IT/Network Contractor]</p> <p>17. <b>Audio/Visual Contractor:</b> [Name of Audio/Visual Contractor]</p> <p>18. <b>Signage Contractor:</b> [Name of Signage Contractor]</p> <p>19. <b>Lighting Contractor:</b> [Name of Lighting Contractor]</p> <p>20. <b>Accessibility Contractor:</b> [Name of Accessibility Contractor]</p>

NAME:  
ADDRESS:  
TELEFAX:  
WEBSITE:  
EMAIL:

COX

Discipline

Project No.

218018.00

Project

Sydney Football Stadium  
Redevelopment  
Driver Ave, Moore Park  
NSW, 2021

Document Control Status:  
**DETAILED DESIGN**

Document Control Status:

FOR INFORMATION

Drawing Title
---------------

ARCHITECTURAL SERVICES

AO DRAWING SHEET

Checked by: AY

Designed by: IK

Approved by: AT

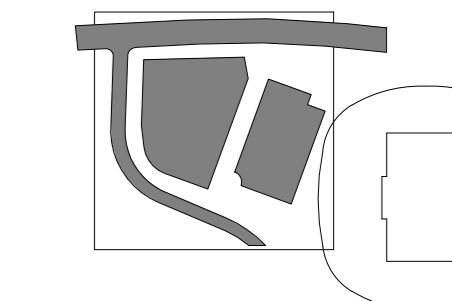
---

Drawing Number: \_\_\_\_\_

A12 B1.01

---



[illegible]

**GENERAL NOTES:** **Owner Plans:**

1. DIMENSIONS IN RED INDICATE CEMENT CURB WITHIN CURB OF SURFACES OF PAVING LANS OR ANY OTHER TYPE OF PAVING. DIMENSIONS WITHIN THIS AREA, SCALE PRINTS MUST BE ADHERED TO ON SITE.
2. THE CONTRACTOR AND SUB-CONTRACTORS SHALL VERIFY ALL DIMENSIONS OF THIS DRAWING IN CONJUNCTION WITH THE FIELD SURVEYOR.
3. FLOORED DIMENSIONS TAKE PRECEDENCE OVER SCALED DIMENSIONS.
4. COPYRIGHT OF THIS DRAWING IS RESERVED BY THE ARCHITECT.
5. THIS DRAWING SHOULD BE READ IN CONJUNCTION WITH ALL RELEVANT SCHEDULES AND SPECIFICATIONS.
6. REFER TO OTHER SPECIALty CONSULT DRAWINGS AND SCHEDULES FOR ALL OTHER DISCIPLINES.
7. ALL DIMENSIONS SHOWN FOR DETAILED LOCATIONS SHALL BE TO FACE UNLESS NOTED AND FOOD OUTLETS.
8. REFER TO LANGUAGE ARCHITECTS DRAWINGS FOR LEVELS, FINISHES, AND EXTERNAL SERVICES.
9. LOCATIONS WITHIN THE BUILDING FACADE LINE.
10. ARCHITECTURAL SECTION DRAWINGS FOR ALL VERTICAL AREAS, CORRS., ETC. REFER TO REFERENCE TACS FOR DETAILED ARCHITECTURAL DRAWINGS.
11. THE ARCHITECT TO BE KEPT TO THE DIMENSION COORDINATES.

**NOTES:**

REFER TO SERVICE ENGINEER'S DRAWINGS FOR LOCATION OF S.O.F. ROOF, ROYS AND SORTING DUCTS.  
SERVICES (ENGINEER'S DRAWINGS) FOR CO-ORDINATION OF SLAB & WALL, SLOTTINGS AND COOLED PENETRATIONS.

REFER TO MECHANICAL ENGINEER'S SERVICE PLAN FOR LOCATION OF SUB-FLOOR SERVICES.

REFER TO DOOR SCHEDULES FOR DOOR HIGHLIGHTING AND FURNITURE DETAILS.

REFER TO MECHANICAL, ELECTRICAL AND PLUMBING SHOP DRAWINGS TO CO-ORDINATE ALL DUCT PENETRATIONS AND LOCATE OPENING SIZES.

REFER TO MECHANICAL ENGINEER'S DETAILS FOR PENETRATIONS AND BUILDING OF GULLIES, PLUMB CLOSING.

BUILD A HIGH LEVEL PROFILE FOR PLUMBING IN CEILING SPACES; REFER TO SERVICE ENGINEER'S DRAWINGS FOR FURTHER DETAILS.

FOR ADDITIONAL SLOTT INFORMATION WHERE NO DIMENSIONS SHOWN, REFER TO REFERENCE TAGS FOR DETAILED ARCHITECTURAL DRAWINGS.

REFER TO ARCHITECTURAL, SPECIFICATION, SCHEDULES AND FLOOR DATA SHEETS FOR FLOOR AND FINISHES CO-ORDINATION, DETAIL AND MATERIALS.

**we are in NSW Infrastructure**  
New South Wales

**Cox Architecture**  
Level 6, 155 Clarence Street,  
Sydney, NSW 2000, Australia  
T + 61 2 9267 9590  
F + 61 2 9264 5844  
[www.coxarchitecture.com.au](http://www.coxarchitecture.com.au)

\_\_\_\_\_

NAME:  
ADDRESS:  
TEL/FAX:  
WEBSITE:  
EMAIL:

Discipline	
------------	--

Project  
Sydney Football Stadium  
Redevelopment

Document Control Status:

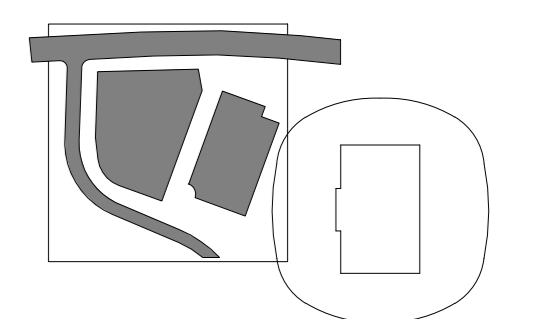
FOR INFORMATION

<div style="border: 1px solid black; width: 100px; height: 100px; margin: 0 auto;"></div>	AD DRAWING SHEET	Drawn:
		Scale: 1" = 1'-0"

A13.B3.01	



© COPYRIGHT COX ARCHITECTURE PTY LTD  
ANY FORM OF REPRODUCTION OF THIS DRAWING IN FULL OR IN PART WITHOUT THE WRITTEN PERMISSION OF COX ARCHITECTURE PTY LTD CONSTITUTES AN INFRINGEMENT OF COPYRIGHT



LOCATION PLAN

Rev	Amendments	Date
A	30% Tender Documentation	13/06/2021
B	30% Tender Documentation	23/08/2021
C	Issued For Information	02/09/2021
D	SSD Precinct Village and Car Park Section 4.55 Modification	17/12/2021

REFER TO THE FOLLOWING DRAWINGS FOR SPECIFIC FINISHES, DETAILS AND INFORMATION:

- ARCHITECTURAL SERVICES - LEVEL 0
- ARCHITECTURAL SERVICES - LEVEL 1
- ARCHITECTURAL SERVICES - LEVEL 2
- ARCHITECTURAL SERVICES - LEVEL 3
- ARCHITECTURAL SERVICES - LEVEL 4
- ARCHITECTURAL SERVICES - LEVEL 5
- ARCHITECTURAL SERVICES - LEVEL 6
- ARCHITECTURAL SERVICES - LEVEL 7
- ARCHITECTURAL SERVICES - LEVEL 8
- ARCHITECTURAL SERVICES - LEVEL 9
- ARCHITECTURAL SERVICES - LEVEL 10
- ARCHITECTURAL SERVICES - LEVEL 11
- ARCHITECTURAL SERVICES - LEVEL 12
- ARCHITECTURAL SERVICES - LEVEL 13
- ARCHITECTURAL SERVICES - LEVEL 14
- ARCHITECTURAL SERVICES - LEVEL 15
- ARCHITECTURAL SERVICES - LEVEL 16
- ARCHITECTURAL SERVICES - LEVEL 17
- ARCHITECTURAL SERVICES - LEVEL 18
- ARCHITECTURAL SERVICES - LEVEL 19
- ARCHITECTURAL SERVICES - LEVEL 20
- ARCHITECTURAL SERVICES - LEVEL 21
- ARCHITECTURAL SERVICES - LEVEL 22
- ARCHITECTURAL SERVICES - LEVEL 23
- ARCHITECTURAL SERVICES - LEVEL 24
- ARCHITECTURAL SERVICES - LEVEL 25
- ARCHITECTURAL SERVICES - LEVEL 26
- ARCHITECTURAL SERVICES - LEVEL 27
- ARCHITECTURAL SERVICES - LEVEL 28
- ARCHITECTURAL SERVICES - LEVEL 29
- ARCHITECTURAL SERVICES - LEVEL 30
- ARCHITECTURAL SERVICES - LEVEL 31
- ARCHITECTURAL SERVICES - LEVEL 32
- ARCHITECTURAL SERVICES - LEVEL 33
- ARCHITECTURAL SERVICES - LEVEL 34
- ARCHITECTURAL SERVICES - LEVEL 35
- ARCHITECTURAL SERVICES - LEVEL 36
- ARCHITECTURAL SERVICES - LEVEL 37
- ARCHITECTURAL SERVICES - LEVEL 38
- ARCHITECTURAL SERVICES - LEVEL 39
- ARCHITECTURAL SERVICES - LEVEL 40
- ARCHITECTURAL SERVICES - LEVEL 41
- ARCHITECTURAL SERVICES - LEVEL 42
- ARCHITECTURAL SERVICES - LEVEL 43
- ARCHITECTURAL SERVICES - LEVEL 44
- ARCHITECTURAL SERVICES - LEVEL 45
- ARCHITECTURAL SERVICES - LEVEL 46
- ARCHITECTURAL SERVICES - LEVEL 47
- ARCHITECTURAL SERVICES - LEVEL 48
- ARCHITECTURAL SERVICES - LEVEL 49
- ARCHITECTURAL SERVICES - LEVEL 50
- ARCHITECTURAL SERVICES - LEVEL 51
- ARCHITECTURAL SERVICES - LEVEL 52
- ARCHITECTURAL SERVICES - LEVEL 53
- ARCHITECTURAL SERVICES - LEVEL 54
- ARCHITECTURAL SERVICES - LEVEL 55
- ARCHITECTURAL SERVICES - LEVEL 56
- ARCHITECTURAL SERVICES - LEVEL 57
- ARCHITECTURAL SERVICES - LEVEL 58
- ARCHITECTURAL SERVICES - LEVEL 59
- ARCHITECTURAL SERVICES - LEVEL 60
- ARCHITECTURAL SERVICES - LEVEL 61
- ARCHITECTURAL SERVICES - LEVEL 62
- ARCHITECTURAL SERVICES - LEVEL 63
- ARCHITECTURAL SERVICES - LEVEL 64
- ARCHITECTURAL SERVICES - LEVEL 65
- ARCHITECTURAL SERVICES - LEVEL 66
- ARCHITECTURAL SERVICES - LEVEL 67
- ARCHITECTURAL SERVICES - LEVEL 68
- ARCHITECTURAL SERVICES - LEVEL 69
- ARCHITECTURAL SERVICES - LEVEL 70
- ARCHITECTURAL SERVICES - LEVEL 71
- ARCHITECTURAL SERVICES - LEVEL 72
- ARCHITECTURAL SERVICES - LEVEL 73
- ARCHITECTURAL SERVICES - LEVEL 74
- ARCHITECTURAL SERVICES - LEVEL 75
- ARCHITECTURAL SERVICES - LEVEL 76
- ARCHITECTURAL SERVICES - LEVEL 77
- ARCHITECTURAL SERVICES - LEVEL 78
- ARCHITECTURAL SERVICES - LEVEL 79
- ARCHITECTURAL SERVICES - LEVEL 80
- ARCHITECTURAL SERVICES - LEVEL 81
- ARCHITECTURAL SERVICES - LEVEL 82
- ARCHITECTURAL SERVICES - LEVEL 83
- ARCHITECTURAL SERVICES - LEVEL 84
- ARCHITECTURAL SERVICES - LEVEL 85
- ARCHITECTURAL SERVICES - LEVEL 86
- ARCHITECTURAL SERVICES - LEVEL 87
- ARCHITECTURAL SERVICES - LEVEL 88
- ARCHITECTURAL SERVICES - LEVEL 89
- ARCHITECTURAL SERVICES - LEVEL 90
- ARCHITECTURAL SERVICES - LEVEL 91
- ARCHITECTURAL SERVICES - LEVEL 92
- ARCHITECTURAL SERVICES - LEVEL 93
- ARCHITECTURAL SERVICES - LEVEL 94
- ARCHITECTURAL SERVICES - LEVEL 95
- ARCHITECTURAL SERVICES - LEVEL 96
- ARCHITECTURAL SERVICES - LEVEL 97
- ARCHITECTURAL SERVICES - LEVEL 98
- ARCHITECTURAL SERVICES - LEVEL 99
- ARCHITECTURAL SERVICES - LEVEL 100

GENERAL NOTES: Refer to the following drawings for specific finishes, details and information:

- ARCHITECTURAL SERVICES - LEVEL 0
- ARCHITECTURAL SERVICES - LEVEL 1
- ARCHITECTURAL SERVICES - LEVEL 2
- ARCHITECTURAL SERVICES - LEVEL 3
- ARCHITECTURAL SERVICES - LEVEL 4
- ARCHITECTURAL SERVICES - LEVEL 5
- ARCHITECTURAL SERVICES - LEVEL 6
- ARCHITECTURAL SERVICES - LEVEL 7
- ARCHITECTURAL SERVICES - LEVEL 8
- ARCHITECTURAL SERVICES - LEVEL 9
- ARCHITECTURAL SERVICES - LEVEL 10
- ARCHITECTURAL SERVICES - LEVEL 11
- ARCHITECTURAL SERVICES - LEVEL 12
- ARCHITECTURAL SERVICES - LEVEL 13
- ARCHITECTURAL SERVICES - LEVEL 14
- ARCHITECTURAL SERVICES - LEVEL 15
- ARCHITECTURAL SERVICES - LEVEL 16
- ARCHITECTURAL SERVICES - LEVEL 17
- ARCHITECTURAL SERVICES - LEVEL 18
- ARCHITECTURAL SERVICES - LEVEL 19
- ARCHITECTURAL SERVICES - LEVEL 20
- ARCHITECTURAL SERVICES - LEVEL 21
- ARCHITECTURAL SERVICES - LEVEL 22
- ARCHITECTURAL SERVICES - LEVEL 23
- ARCHITECTURAL SERVICES - LEVEL 24
- ARCHITECTURAL SERVICES - LEVEL 25
- ARCHITECTURAL SERVICES - LEVEL 26
- ARCHITECTURAL SERVICES - LEVEL 27
- ARCHITECTURAL SERVICES - LEVEL 28
- ARCHITECTURAL SERVICES - LEVEL 29
- ARCHITECTURAL SERVICES - LEVEL 30
- ARCHITECTURAL SERVICES - LEVEL 31
- ARCHITECTURAL SERVICES - LEVEL 32
- ARCHITECTURAL SERVICES - LEVEL 33
- ARCHITECTURAL SERVICES - LEVEL 34
- ARCHITECTURAL SERVICES - LEVEL 35
- ARCHITECTURAL SERVICES - LEVEL 36
- ARCHITECTURAL SERVICES - LEVEL 37
- ARCHITECTURAL SERVICES - LEVEL 38
- ARCHITECTURAL SERVICES - LEVEL 39
- ARCHITECTURAL SERVICES - LEVEL 40
- ARCHITECTURAL SERVICES - LEVEL 41
- ARCHITECTURAL SERVICES - LEVEL 42
- ARCHITECTURAL SERVICES - LEVEL 43
- ARCHITECTURAL SERVICES - LEVEL 44
- ARCHITECTURAL SERVICES - LEVEL 45
- ARCHITECTURAL SERVICES - LEVEL 46
- ARCHITECTURAL SERVICES - LEVEL 47
- ARCHITECTURAL SERVICES - LEVEL 48
- ARCHITECTURAL SERVICES - LEVEL 49
- ARCHITECTURAL SERVICES - LEVEL 50
- ARCHITECTURAL SERVICES - LEVEL 51
- ARCHITECTURAL SERVICES - LEVEL 52
- ARCHITECTURAL SERVICES - LEVEL 53
- ARCHITECTURAL SERVICES - LEVEL 54
- ARCHITECTURAL SERVICES - LEVEL 55
- ARCHITECTURAL SERVICES - LEVEL 56
- ARCHITECTURAL SERVICES - LEVEL 57
- ARCHITECTURAL SERVICES - LEVEL 58
- ARCHITECTURAL SERVICES - LEVEL 59
- ARCHITECTURAL SERVICES - LEVEL 60
- ARCHITECTURAL SERVICES - LEVEL 61
- ARCHITECTURAL SERVICES - LEVEL 62
- ARCHITECTURAL SERVICES - LEVEL 63
- ARCHITECTURAL SERVICES - LEVEL 64
- ARCHITECTURAL SERVICES - LEVEL 65
- ARCHITECTURAL SERVICES - LEVEL 66
- ARCHITECTURAL SERVICES - LEVEL 67
- ARCHITECTURAL SERVICES - LEVEL 68
- ARCHITECTURAL SERVICES - LEVEL 69
- ARCHITECTURAL SERVICES - LEVEL 70
- ARCHITECTURAL SERVICES - LEVEL 71
- ARCHITECTURAL SERVICES - LEVEL 72
- ARCHITECTURAL SERVICES - LEVEL 73
- ARCHITECTURAL SERVICES - LEVEL 74
- ARCHITECTURAL SERVICES - LEVEL 75
- ARCHITECTURAL SERVICES - LEVEL 76
- ARCHITECTURAL SERVICES - LEVEL 77
- ARCHITECTURAL SERVICES - LEVEL 78
- ARCHITECTURAL SERVICES - LEVEL 79
- ARCHITECTURAL SERVICES - LEVEL 80
- ARCHITECTURAL SERVICES - LEVEL 81
- ARCHITECTURAL SERVICES - LEVEL 82
- ARCHITECTURAL SERVICES - LEVEL 83
- ARCHITECTURAL SERVICES - LEVEL 84
- ARCHITECTURAL SERVICES - LEVEL 85
- ARCHITECTURAL SERVICES - LEVEL 86
- ARCHITECTURAL SERVICES - LEVEL 87
- ARCHITECTURAL SERVICES - LEVEL 88
- ARCHITECTURAL SERVICES - LEVEL 89
- ARCHITECTURAL SERVICES - LEVEL 90
- ARCHITECTURAL SERVICES - LEVEL 91
- ARCHITECTURAL SERVICES - LEVEL 92
- ARCHITECTURAL SERVICES - LEVEL 93
- ARCHITECTURAL SERVICES - LEVEL 94
- ARCHITECTURAL SERVICES - LEVEL 95
- ARCHITECTURAL SERVICES - LEVEL 96
- ARCHITECTURAL SERVICES - LEVEL 97
- ARCHITECTURAL SERVICES - LEVEL 98
- ARCHITECTURAL SERVICES - LEVEL 99
- ARCHITECTURAL SERVICES - LEVEL 100

PRINT IN COLOUR

we are **insw** architects  
New South Wales

**Cox Architecture**  
Level 6, 150 Clarence Street,  
Sydney, NSW 2000, Australia  
T +61 2 9267 9599  
F +61 2 9264 5544  
www.coxarchitecture.com.au

Nominated Architects  
Rustland Law No. 8267

**COX**

Consultants/Subcontractors

NAME:  
ADDRESS:  
TEL/FAX:  
WEBSITE:  
EMAIL:

**COX**

Discipline

Project No.  
218018.00

Project  
Sydney Football Stadium  
Redevelopment  
Driver Ave, Moore Park  
NSW, 2021

Document Control Status:  
DETAILED DESIGN

Document Control Status:

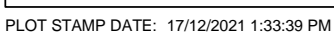
FOR INFORMATION

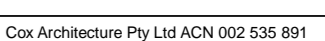
Drawing Title  
ARCHITECTURAL SERVICES - LEVEL 0

As Drawing Sheet

Checked by: AY  
Designed by: IK  
Approved by: AY  
Drawing Number:  
A13.L0.02

Drawn: IK  
Scale: As Indicated  
Date: 17/12/2021  
Revision: D  
North:











[illegible]

AK14 240000 - FRIE CARPENTRY/INTERIOR PLUMB  
AK15 240000 - FLOORING CONCRETE OUTLINE PLUMB  
AK20 240000 - BOVE PLUMB  
AK26 240000 - REFLECTED CEILING PLUMB  
AK27 240000 - FLOOR & WALL FINISHES PLUMB  
AK28 240000 - MASONRY & PARTITION PLUMB  
AK29 240000 - ANTI-DROWNING PLUMB  
AK30 240000 - PLACED CLADDING ELEVATIONS  
AK31 240000 - PRECAST CLADDING ELEVATIONS  
AK32 240000 - GLASS PARTITION & SHOWER GLAZING  
AK36 240000 - ACQUA/ENVIRONMENTAL GREEN ELEVATIONS  
AK42 240000 - BOVE, CIVIL  
AK45 240000 - CORE DETAILS  
AK46 240000 - 1/FIN DETAILS  
AK47 240000 - BALUSTRADE & RAILING DETAILS  
AK50 240000 - PLUMB DETAILS  
AK51 240000 - PART 240000 - FRIE CARPENTRY/INTERIOR PLUMB

**GENERAL NOTES:** See below.

1. DIMENSIONS GIVEN INDICATE CRITICAL CLERK WITHIN VIEW FROM SURFACE OF WALL/SLAB OR OTHER PLATES OR FITTINGS NOTED CLEARLY IN AREA. CLEAR NOTINGS MUST BE ADHERED TO ON SITE.
2. ALL DIMENSIONS MUST BE GIVEN IN METERS.
3. THE CONTRACTOR AND SUB-CONTRACTORS SHALL VERIFY ALL DIMENSIONS OF THIS DRAWING IN RELATION TO EXISTING SITE CONDITIONS PRIOR TO ANY WORK COMMENCING.
4. PRIOR TO COMMENCING WORK, THE CONTRACTOR SHALL VERIFY ALL DIMENSIONS OF THIS DRAWING IN RELATION TO EXISTING SITE CONDITIONS PRIOR TO ANY WORK COMMENCING.
5. COPYRIGHT OF THIS DRAWING IS HELD BY THE PRINCIPAL CONSULTANT.
6. DRAWINGS SHALL BE USED IN CONNECTION WITH ALL RELEVANT SPECIFICATIONS AND SPECIFICATIONS.
7. OTHER SPECIALIST CONSULTANTS (STRUCTURAL, MECHANICAL AND ELECTRICAL) FOR ALL OTHER DISCIPLINES SHALL BE CONSULTED PRIOR TO ANY WORK COMMENCING.
8. REFER TO CONSULTANT DRAWINGS FOR DETAILED LEVELS OF ALL KITCHENS, BATH AND TOILET OUTLETS.
9. REFER TO LANDSCAPE ARCHITECTS DRAWINGS FOR LANDSCAPE FINISHES AND EXTERNAL SERVICES.
10. LOCATIONS BYINVEST THE BUILDING FACTORY LINE.
11. FOR ALL OTHER SPECIALIST CONSULTANTS (STRUCTURAL, MECHANICAL AND ELECTRICAL) FOR ALL OTHER DISCIPLINES SHALL BE CONSULTED PRIOR TO ANY WORK COMMENCING.
12. FOR DETAILED ARCHITECTURAL DRAWINGS.
13. THE ARCHITECT'S OFFICE SHALL BE RESPONSIBLE FOR ALL DIMENSIONS AND COORDINATES.

STRUCTURE NOTES:  
STRUCTURAL ELEMENTS SHOWN IN ARCHITECTURAL DRAWINGS ARE INDICATIVE ONLY AND INCLUDED FOR SPATIAL CO-ORDINATION PURPOSES ONLY.  
FOR FULL STRUCTURAL DESIGN INCLUDING SUPERSTRUCTURE, BOWL STRUCTURE, SUBSTRUCTURE SIZE AND BEARINGS, SEE SEPARATE SOIL AND SHORING DETAILS, COLUMN / STRUCTURAL ANALYSIS AND DESIGN REPORTS.  
REFER STRUCTURAL ENGINEER'S REPORT.

**NOTES:**

REFER TO SERVICE ENGINEER'S DRAWINGS FOR LOCATION OF 90° BOWLS, GPO'S AND SHORTING DUCT SERVICES ENGINEER'S DRAWINGS FOR CO-ORDINATION OF BUILD-IN FLOORBOARDS AND CORDED PANELS.

REFER TO HYDRAULIC ENGINEER'S SERVICE PLAN FOR LOCATION OF SUBFLOOR SERVICES.

REFER TO SCHEDULES FOR DOOR HARDWARE AND FURNITURE DETAILS.

REFER TO MECHANICAL ENGINEER'S DRAWINGS TO CO-ORDINATE WITH COMMUNITY BUS DUCT PENETRATIONS AND LOUVER OPENINGS SIZES.

REFER TO MECHANICAL ENGINEER'S DETAILS FOR PENETRATIONS AND BUILDING IN OF DUCTS, GRILLES, CHIMNEYS, ETC.

BUILD-IN HIGH LEVEL OPENINGS FOR PLUMBING IN CLOSET SPACES. REFER TO MECHANICAL ENGINEER'S DETAILS.

FOR ADDITIONAL SECT INFORMATION INFORMATION HERE ON DRAWINGS SHOWN. REFER TO SEPARATE TYPED DETAIL ARCHITECTURAL DRAWINGS.

REFER TO ARCHITECTURAL SPECIFICATION, SCHEDULES AND ROOM DATA SHEETS FOR FRAM AND FRESH AIR SYSTEMS, MECHANICAL, ELECTRICAL AND PLUMBING.



PRINT IN COLOUR

**we are insw** Infrastructure  
New South Wales

**Cox Architecture**  
Level 6, 155 Clarence Street,  
Sydney, NSW 2000, Australia  
T + 61 2 9267 9500  
F + 61 2 9264 5844  
[www.coxarchitecture.com.au](http://www.coxarchitecture.com.au)

**Nominated Architects**  
Joe Agius no. 6491  
Russell Lee no. 6387

COX

**Consultants/Subcontractors**

**NAME:** \_\_\_\_\_

**ADDRESS:** \_\_\_\_\_

**TEL/FAX:** \_\_\_\_\_

**WEBSITE:** \_\_\_\_\_

**EMAIL:** \_\_\_\_\_

COX

Discipline	
------------	--

Project No.	218018.00
-------------	-----------

Project

Sydney Football Stadium  
Redevelopment

Driver Ave, Moore Park  
NSW, 2021

Document Control Status:

**DETAILED DESIGN**

Document Control Status:

FOR INFORMATION

Drawing Title	ARCHITECTURAL SERVICES - SECTION NS
---------------	--

AD DRAWING SHEET

Checked by: AY	Scale: As in
----------------	--------------

Designed by: IK	Date: 17/12
-----------------	-------------

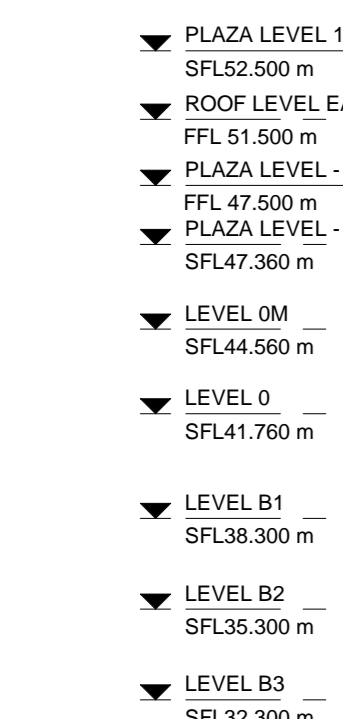
Approved by: AY	Revision:
Drawing Number:	Month:

Drawing Number: \_\_\_\_\_

	A40.00.02	
--	-----------	--

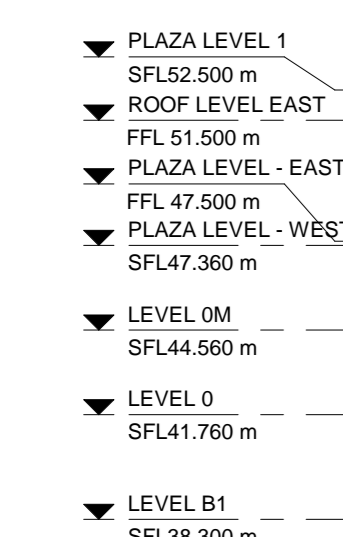

Copyright © 2007 by John Wiley & Sons, Inc.

1 NORTH  
SCALE 1 : 250



2 NORTH  
SCALE 1 : 250

PLANT STAND DATE: 12/10/2011 4:57:50 PM



Key Value	Keynote Text
BAL	SS BALUSTER
BAL01	INTEGRATED BARRIER SYSTEM
BAL02	INTEGRATED BARRIER SYSTEM
BK1	EXTERNAL BRICK CLADDING
BK2	EXTERNAL BRICK CLADDING - HIT AND MISS
BULK	BLOCKWORK
CTW05	CERAMIC WALL TILE
FHLD.	LINEAR DRAIN
FT-1	ALUMINIUM FRAMED GLASS - FIXED AND OPERABLE
FT-2	ALUMINIUM FLOURES
GLS01	GLASS GLAZING TO STAIRWELL
P01	13mm MR/ 92mm STUD / 13mm MR SHEET
P02	MESH /92mm STUD / 13mm MR
PCE	PRECAST CONCRETE SLAB EDGES, PLANTERS & PERGOLAS
PCP	PRECAST CONCRETE PLANKS
PT1	PAINT COLOUR 1
TGSL	TACTILE GROUND SURFACE INDICATORS

AO DRAWING SHEET

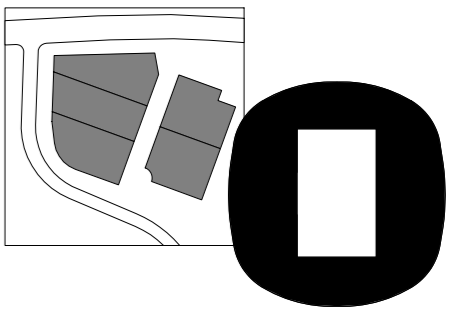
Checked by: AY	Scale: As in
----------------	--------------

Designed by: IK	Date: 17/12
-----------------	-------------

Approved by: AY	Revision:
Drawing Number:	Month:

Drawing Number: \_\_\_\_\_

	A40.00.02	
--	-----------	--

## LOCATION PLAN

[illegible]

REF TO THE FOLLOWING DRAWING SETS FOR SPECIFIC PANEL SIZE AND INFORMATION:

- 124 SERIES-FIRE COMPARTMENTATION PLANS
- 120 SERIES-CONCRETE OUTRIG PLANS
- 123 SERIES-BODY PLANS
- 121 SERIES-APPLYING CEMENT PLASTER PLANS
- 127 SERIES-FLOOR & RAIL FINISHES PLANS
- 126 SERIES-PAVING & PARTITION PLANS
- 128 SERIES-WATERPROOFING PLANS
- 125 SERIES-CEILING CLADDING & DETAILS
- 129 SERIES-CAST CLADDING ELEVATIONS
- 130 SERIES-3-D SIZED PARTS FOR CEILING CLADDING
- 126 SERIES-ACOUSTIC/ENVIRONMENTAL SCREEN ELEVATIONS
- 126 SERIES-CEILING DETAILS
- 126 SERIES-CORE DETAILS
- 126 SERIES-SPRINT DETAILS
- 126 SERIES-PAVING & BARRIER DETAILS
- 126 SERIES-PAVING DETAILS
- 126 SERIES-WET AREAS DRAINAGE FOR ACCESS PANELS IN WET AREAS
- 126 SERIES-WALL PANEL DETAILS

[illegible]

REFER TO SERVICE ENGINEERS DRAWINGS FOR LOCATION OF S.P.T. RESULTS, GPO'S AND SHOOTING QUICIS; REFER TO SERVICES ENGINEERS DRAWINGS FOR CO-ORDINATION OF SLAB, LIFT, BLOODFLOORS AND CORRID SERVICES.

REFER TO HYDRAULIC ENGINEER'S SERVICE PLAN FOR LOCATION OF SUB-FLOOR SERVICES.

REFER TO DOOR SCHEDULES FOR DOOR HARDWARE AND FINISH DETAILS.

REFER TO MECHANICAL ENGINEER'S DRAWINGS AND SHOP DRAWINGS TO CORROBORATE OF ALL EXIST PENETRATIONS AND LOCATE OPENING SIZES.

REFER TO MECHANICAL ENGINEER'S DETAILS FOR PENETRATIONS AND BUILDING IN OF DUCTS, GRILLES, PLANT AND COILED PIPINGS.

REFER TO HIGH LEVELS OFFERS FOR PLUMBING IN CEILING SPACES; REFER TO MECHANICAL ENGINEER'S DRAWING FOR ADDITIONAL SIGHT INFORMATION WHERE NO DIMENSIONS SHOWN; REFER TO REFERENCES TAGS FOR DETAILS OF MECHANICAL SERVICES.

REFER TO ARCHITECTURAL SPECIFICATION, SCHEDULES AND ROOM DATA SHEETS FOR FPM AND FINISHES CODES FOR FURTHER DETAIL AND OTHER MISCELLANEOUS ITEMS.



we are **insw** Infrastructure  
New South Wales

**venues.**  
new south wales

**JOHN  
HOLLAND**

dominated Architects  
Joe Agius no. 6491  
Russell Lee no. 6367

COX

**SPECT Studios Pty Ltd**  
Level 1/78-80 George St,  
Sydney, NSW, 2016, Australia  
+ 61 2 9699 7182

**TTW** Structural  
Civil  
Traffic  
Facade

002 9438 7300 | Level 6, 71 Miller Street, North Sydney, NSW 1585

ASPECT Studios

Consultants/Subcontractors	
----------------------------	--

NAME:  
ADDRESS:  
TELEFAX:  
WEBSITE:  
EMAIL:

COX

## Discussion

\_\_\_\_\_  
 District No.

Project \_\_\_\_\_

PRECINCT VILLAGE &amp;

Driver Ave, Moore Park  
NSW, 2021

Phase: \_\_\_\_\_  
DETAILED REGION \_\_\_\_\_

Document Control Status:

FOR INFORMATION

FOR INFORMATION

Drawing Title \_\_\_\_\_

ARCHITECTURAL SERVICES - GENERAL  
ARRANGEMENT PLAN - PLAZA LEVEL

AN ORDINANCE SWEET

Drawn: 11.1

Checked by: AY/AC	Scale: As indicated by AD
-------------------	------------------------------

Designed by: UK	Drawn by: FLORENT
Approved by: AY	Revision: 4

Drawing Number: 

Cox Architecture Pty Ltd ACN 002 535 691

