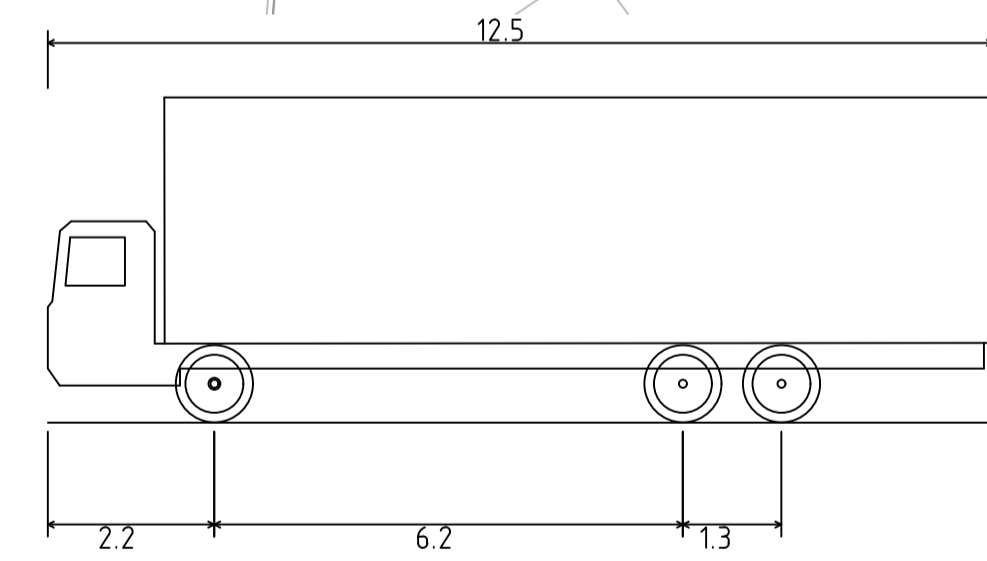


**TEMPORARY ENTRY PLAN - SHEET 1**  
SCALE 1:500



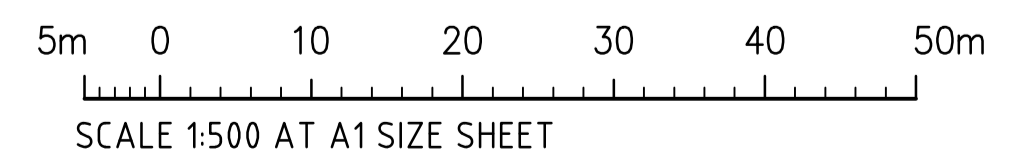
**SWEPT PATH NOTE:**  
DESIGN SPEED 5km/h.

— VEHICLE BODY PATH  
- - - VEHICLE BODY PATH 500mm CLEARANCE

HRV - HEAVY RIGID VEHICLE	
OVERALL LENGTH	12.500m
OVERALL WIDTH	2.500m
OVERALL BODY HEIGHT	4.300m
MIN BODY GROUND CLEARANCE	0.490m
TRACK WIDTH	2.500m
LOCK-TO-LOCK TIME	6.00s
CURB TO CURB TURNING RADIUS	12.500m

**NOTE:**  
THIS PLAN HAS BEEN PRODUCED USING VEHICLE MODELLING COMPUTER SOFTWARE AUTODESK VEHICLE TRACKING. THE VEHICLES ADOPTED ARE BASED UPON VEHICLE DATA PROVIDED BY THE SOFTWARE FOR AUSTRROADS & AS2890.

**TURNING PATHS SHOWN FOR AUSTRROADS STANDARD 12.5m HRV - HEAVY RIGID VEHICLE**



**FOR INFORMATION**