



DARLINGTON PUBLIC SCHOOL
 SSD - 9914 ARCHITECTURAL DESIGN UPDATE

FOLLOWING RESPONSE TO SUBMISSIONS

GOLDEN GROVE STREET, DARLINGTON, SYDNEY
 Department of Education

fjmt studio architecture interiors urban landscape
 20 AUGUST 2020 REV 00



Project Name		Darlington Public School	
Project Code		DTPS	
Document Name		SSD-9914 Architectural Design Update	
Revision	Date	Comment	Approved
REV 00	20.08.20	Design Change Report	EC

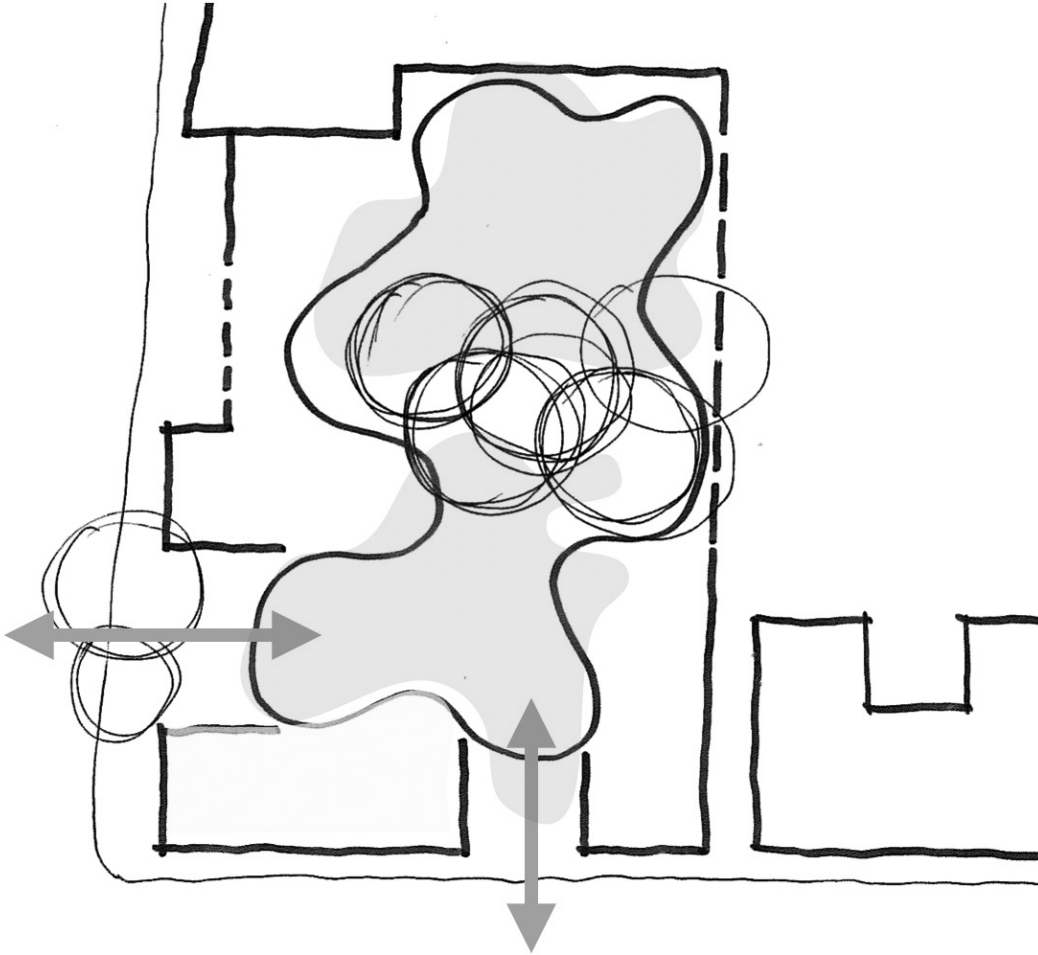
Sydney Level 5, 70 King Street, Sydney NSW 2000 Australia **t** +61 2 9251 7077
melbourne Level 2, 56 Hardware Lane, Melbourne VIC 3000 Australia **t** +61 3 9604 2500
uk Level , St Aldates, OX1 1BS United Kingdom **t** +44 1865 520 420

w fjmtstudio.com

Francis-Jones Morehen Thorp Pty Ltd ABN 28 101 197 219
Nominated architect Richard Francis-Jones ARBNSW 5301
Registered architect Richard Francis-Jones
Francis-Jones Morehen Thorp Ltd Company no 7384142 ARB 078103G

CONTENTS

DESIGN CHANGE SUMMARY	4
Facade Development	4
Bicycle Storage	4
1.0 HALL VOLUME	5
Elevation Comparison	5
View Comparison	6
2.0 SOUTHERN FACADE	8
Elevation Comparison	8
Updated Facade Sections	9
3.0 EAST WING	10
Elevation Comparison	10
Plan Comparison	11
View Comparison	14
4.0 WEST FACADE	16
Elevation Comparisons	16
Facade Sections	17
5.0 BICYCLE STORAGE	18
Lower Ground Floor Plan Comparisons	18
5.0 ARCHITECTURAL DOCUMENTS	19
- General Arrangment Plans	19
- Elevations	19
- Sections	19



DESIGN CHANGE SUMMARY

Facade Development

This Architectural Design Change Report has been prepared by fjmt Studio on behalf of the Department of Education (the ‘Applicant’). It accompanies the previously issued Architectural Design Statement for State Significant Development Application SSD 9914.

Since submission of the above SSDA, some development of the facades has occurred as part of the Design Development phase of the project. The following pages describe the changes.

Specifically:

1.0 Reduction in height of the southern-most sawtooth roof

- During design development it was revealed that the ceiling height of the hall was too high and needed to be reduced to provide a more efficient and proportionate response.
- This has been done by still maintaining the sawtooth form and recognising the importance of the civic scale at the corner of Golden Grove and Abercrombie Streets.

2.0 Articulation of the Southern Facade

- The glazing and brickwork to the southern facade of the hall building has been articulated to provide a finer grain response to the streetscape.
- The previous single large window into the south facade of the communal hall has been divided into 5 smaller windows. These are set into a recessed brick facade with large splayed sills and clearly defined brick blades between the glazing elements.
- This creates a more interesting street frontage, responding to the local context and a more structurally efficient result.

3.0 Reduction in bulk of the south-eastern wing

- Due to the large volume above the hall, it was decided that the staff area could be moved from the east wing, to above the hall. This has resulted in a reduction in height and bulk on the eastern side of the hall whilst still holding a strong alignment to the street through both the lower form and landscaping.

4.0 Change to Level 1 western facade

- The windows to the level 1 classrooms on the western facade (Golden Grove Street) have been changed from vertical slot windows to horizontal strip windows with vertical brick external blades, which provide solar shading from the western sun.
- This provides a larger expanse of light and views out from the classrooms, and a more integrated approach to the fenestration in this facade.
- In addition to this, a window has been added on the southern end of the western facade, due to the new staff room location above the hall.

Please refer to the relevant pages in this report, which illustrate the above changes..

Bicycle Storage

One of the Response to Submissions raised a query regarding the number of bicycle spaces for students.

The bicycle storage area has been re-planned and an increased number of student bicycle and scooter parking spaces has been provided. In addition, 8 staff bicycle parking spaces are provided in the secure courtyard on Golden Grove Street, near the preschool..

Refer to the relevant page in this report.

1.0 HALL VOLUME

Elevation Comparison

Submitted SSDA - Golden Grove Street Elevation



SSDA Update - Golden Grove Street Elevation



View Comparison

Submitted SSDA



LOOKING TOWARDS CORNER OF GOLDEN GROVE AND ABERCROMBIE STREETS

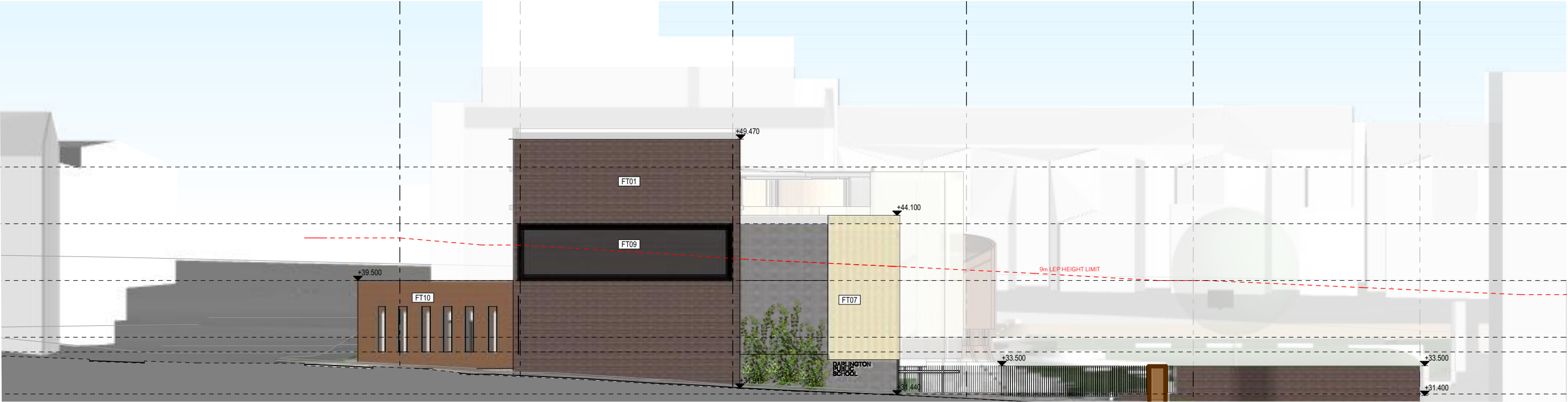


LOOKING TOWARDS CORNER OF GOLDEN GROVE AND ABERCROMBIE STREETS

2.0 SOUTHERN FACADE

Elevation Comparison

Submitted SSDA - Abercrombie Street Elevation



SSDA Update - Abercrombie Street Elevation

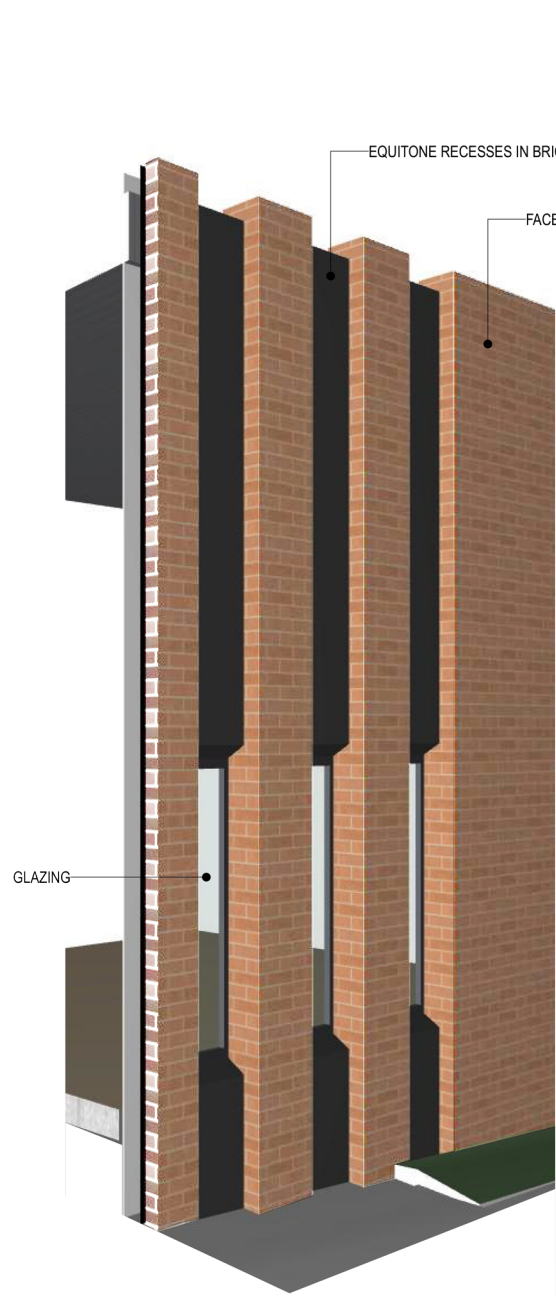


Updated Facade Sections

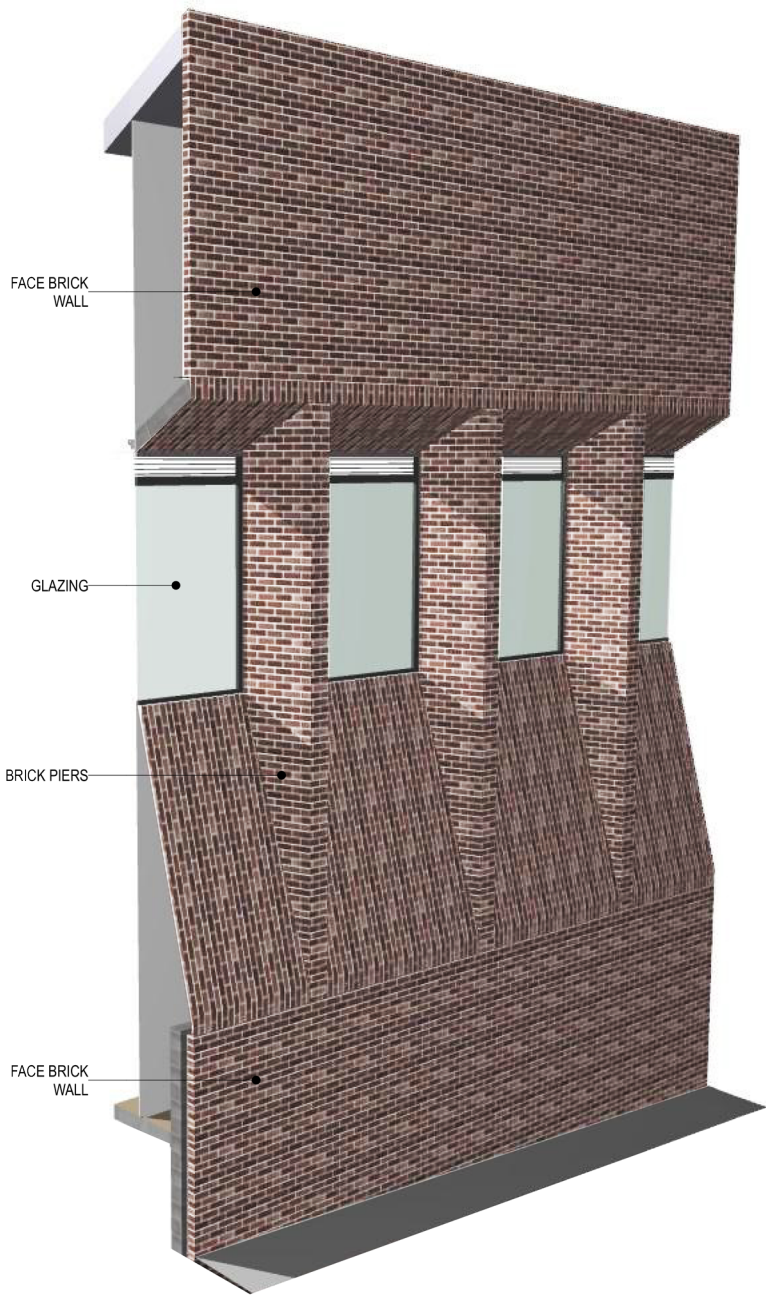
SSDA Update



SOUTHERN ELEVATION



1 SECTION Hall West Wing South
1:1.1923



2 SECTION Hall South Facade 2
1:1

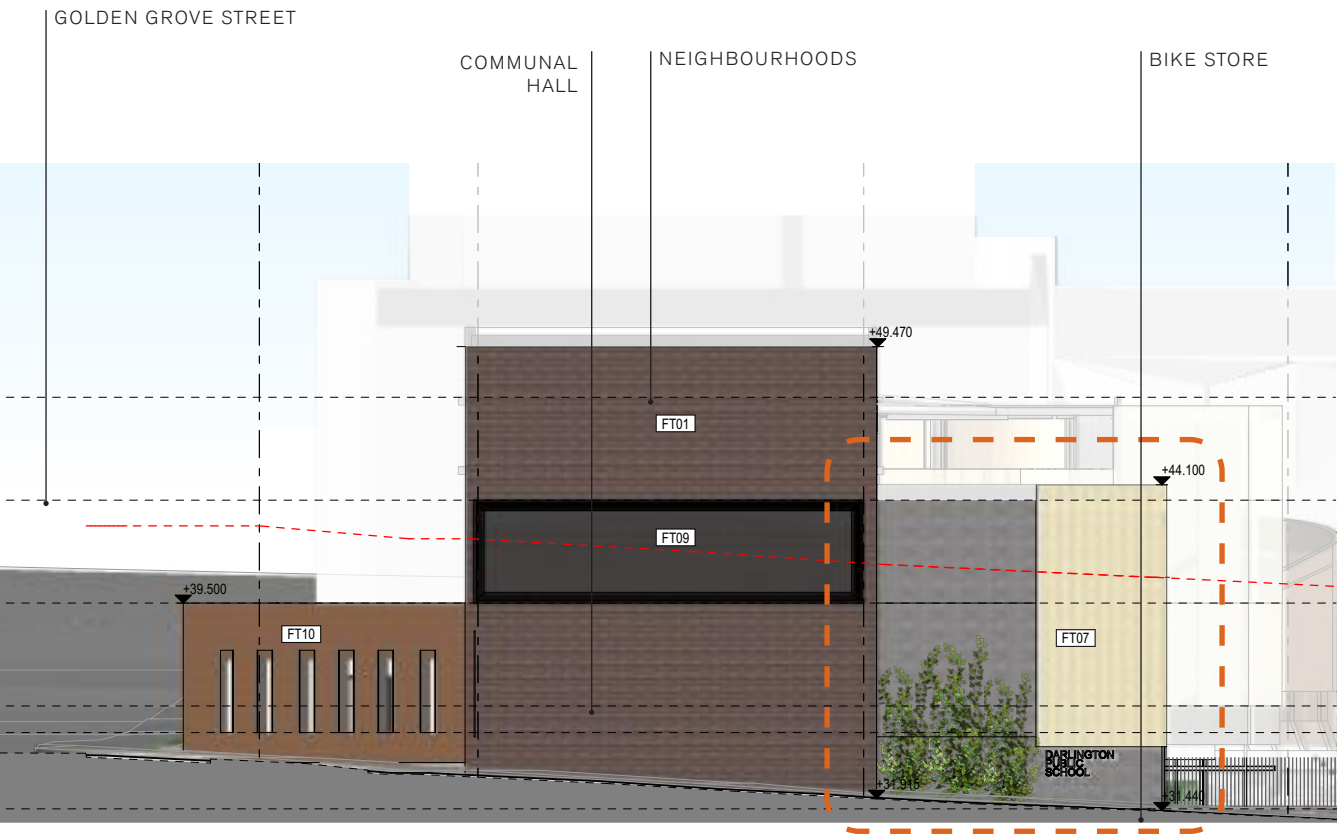


3 SECTION Hall West Wing Corner 2
1:1.3077

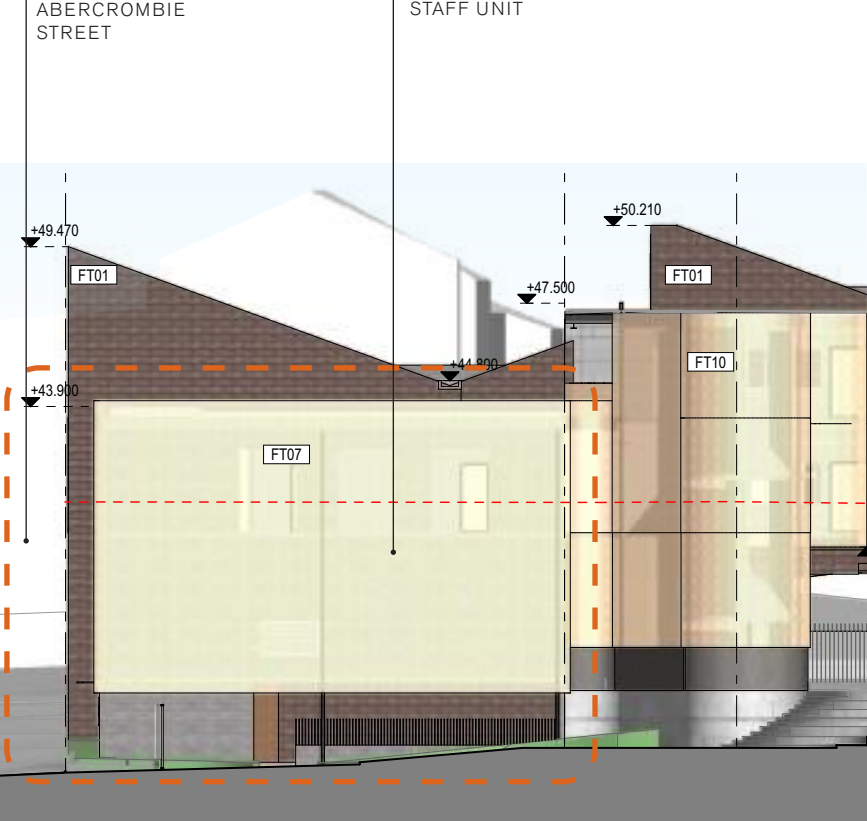
3.0 EAST WING

Elevation Comparison

Submitted SSDA - Abercrombie Street Elevation



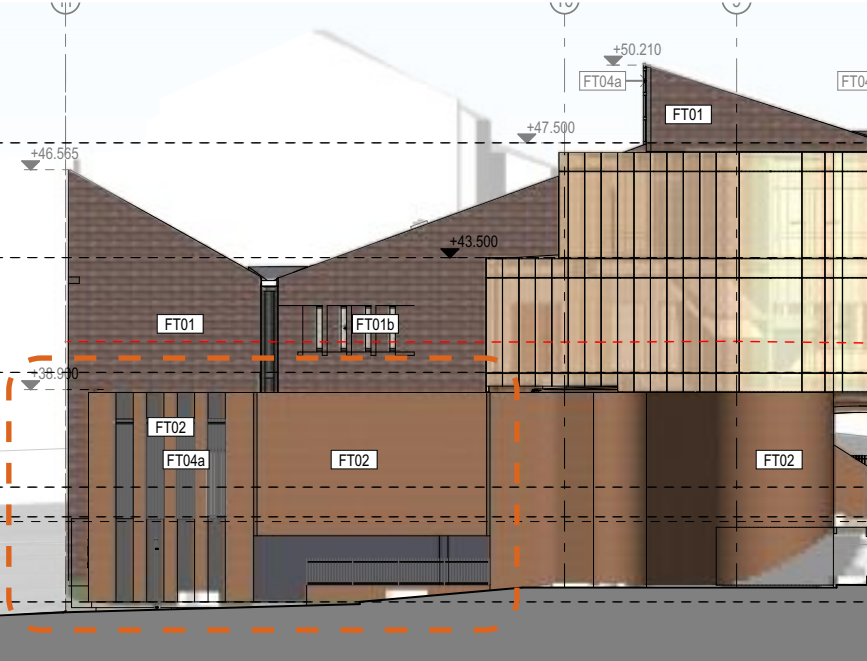
Eastern Elevation



SSDA Update - Abercrombie Street Elevation

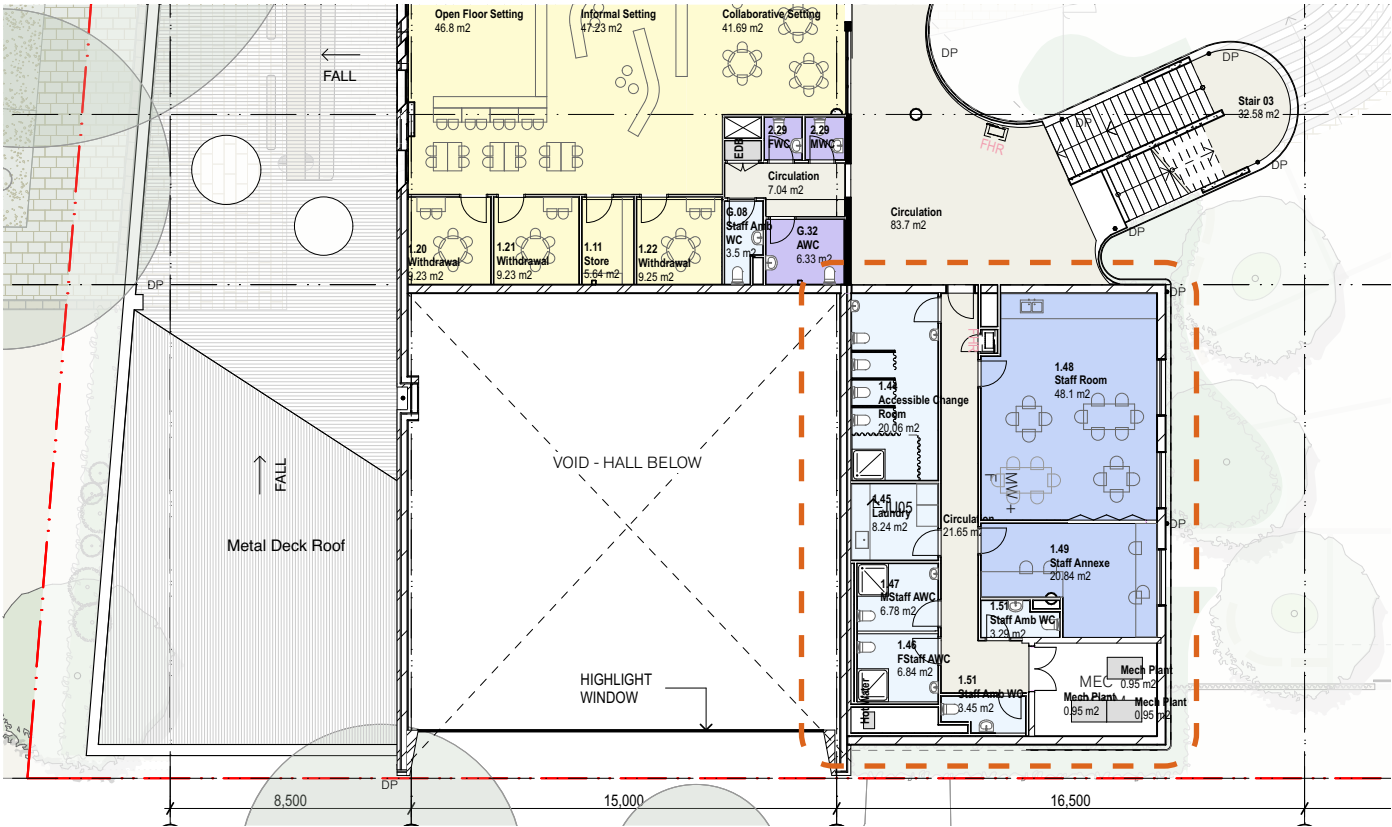


Eastern Elevation

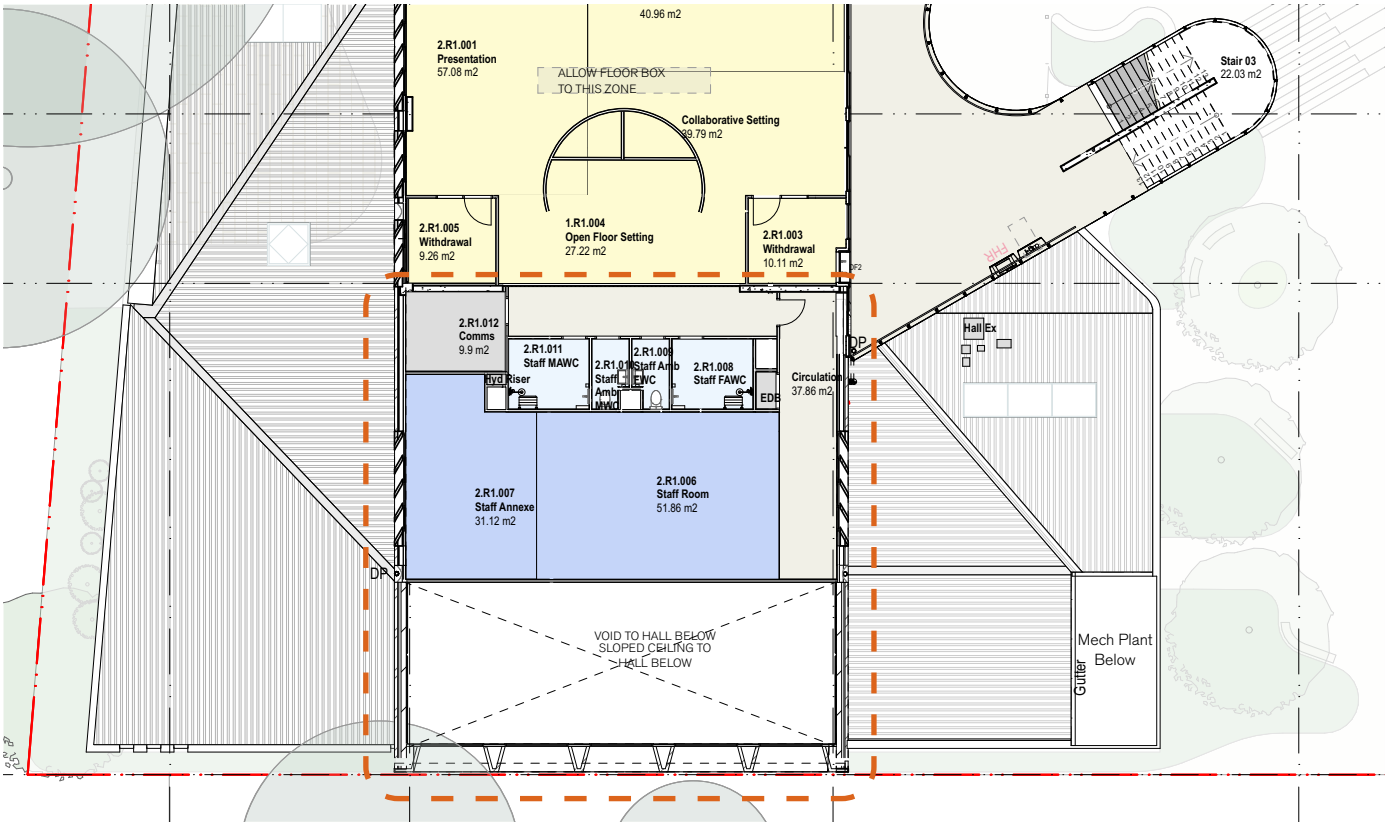


Plan Comparison

Submitted SSDA - Level 1 Plan

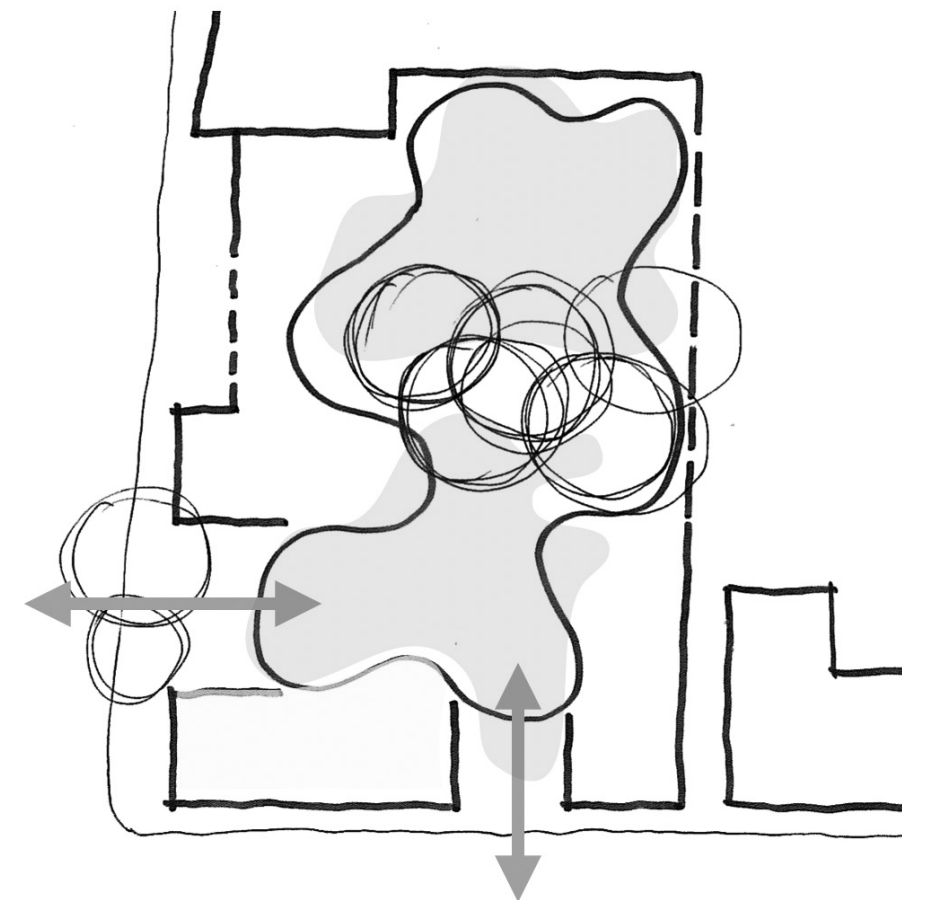


SSDA Update - Level 1 Plan



SSDA Update - View of East Wing and Secondary Entrance on Abercrombie Street



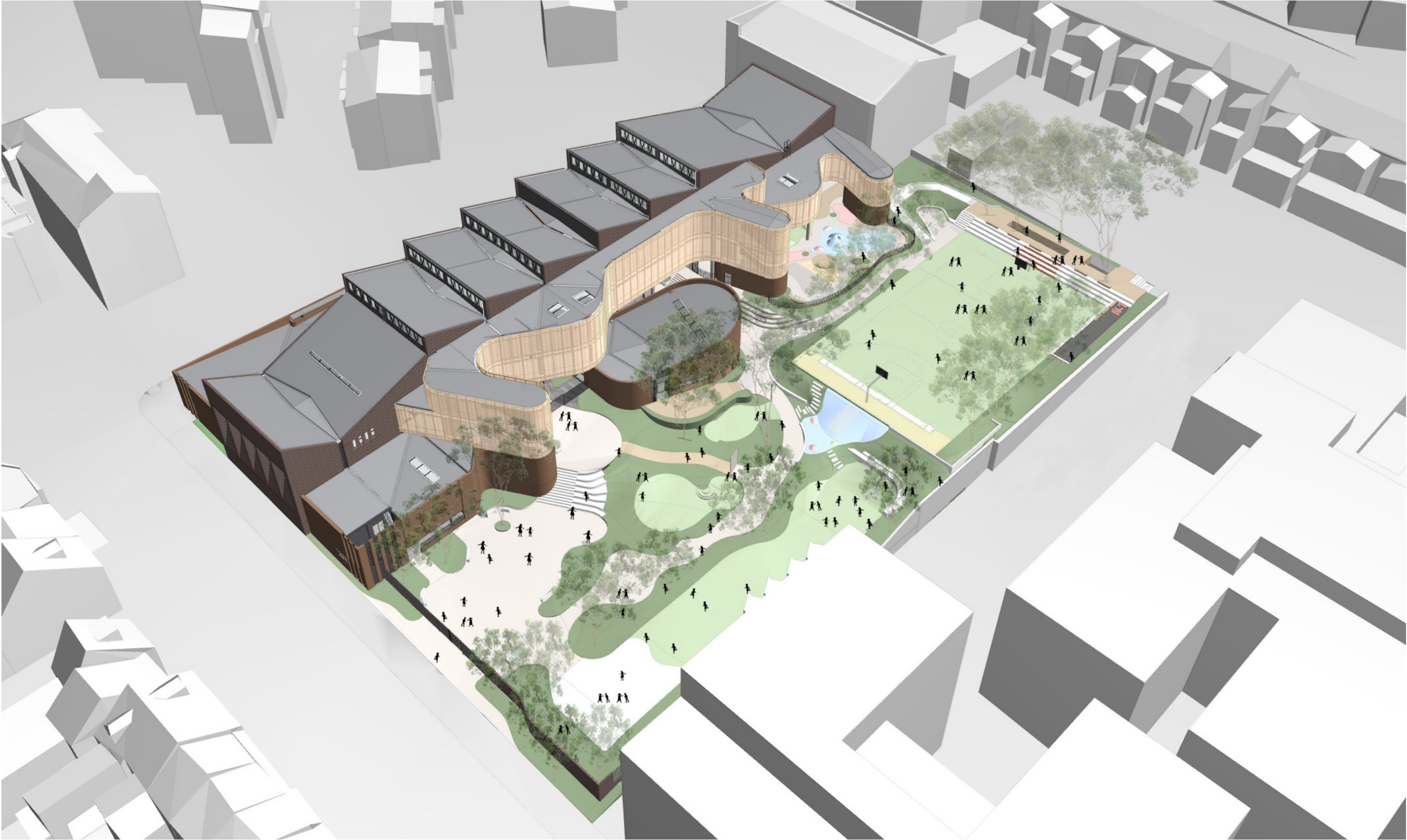


View Comparison - Aerial View

Submitted SSDA



AERIAL VIEW



AERIAL VIEW

4.0 WEST FACADE

Elevation Comparisons

Submitted SSDA - Golden Grove Street Elevation



SSDA Update - Golden Grove Street Elevation

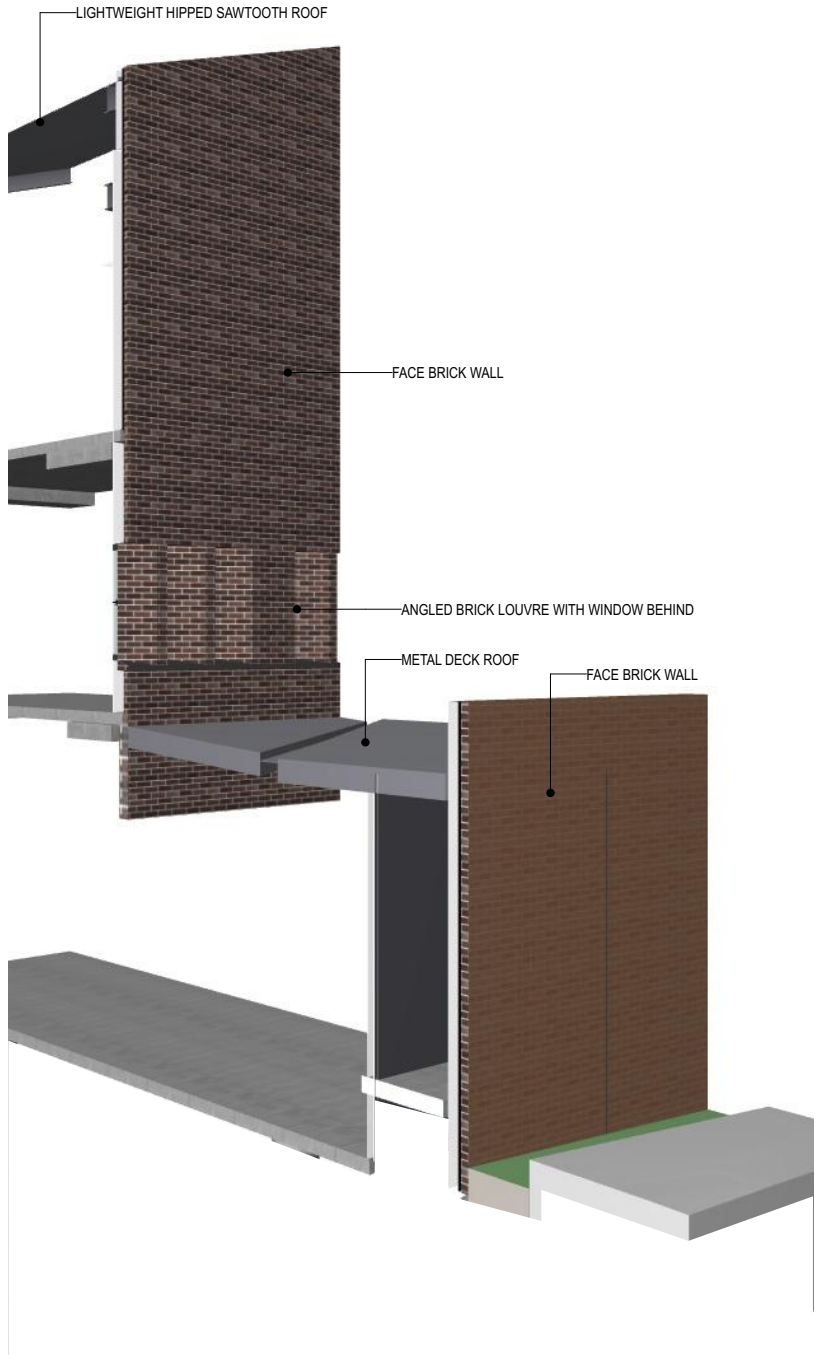


Facade Sections

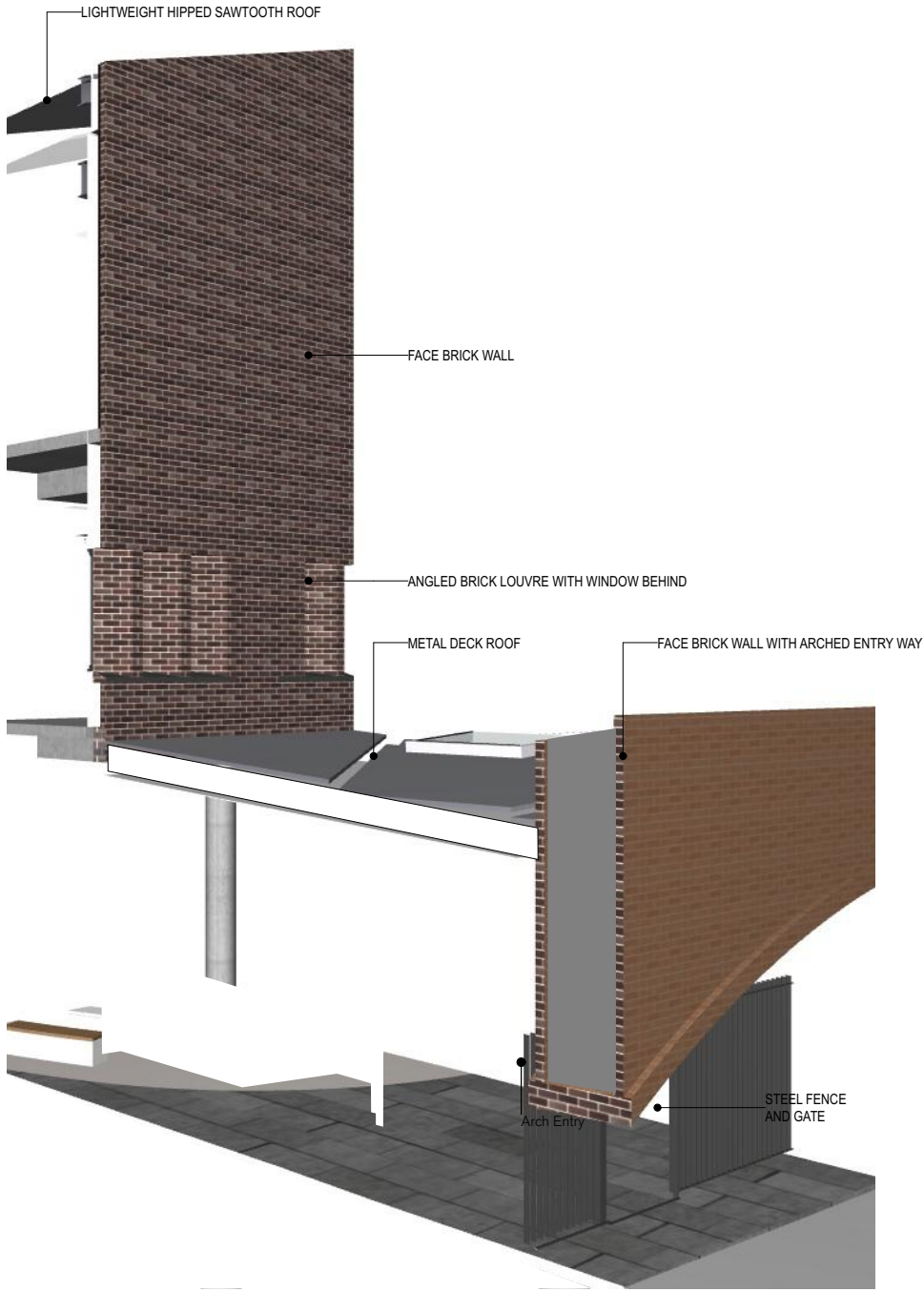
SSDA Update



WESTERN ELEVATION



2 SECTION FT01 & FT02 Typical
1:1



1 SECTION Main Arch Entrance Cutaway
1:1

5.0 BICYCLE STORAGE

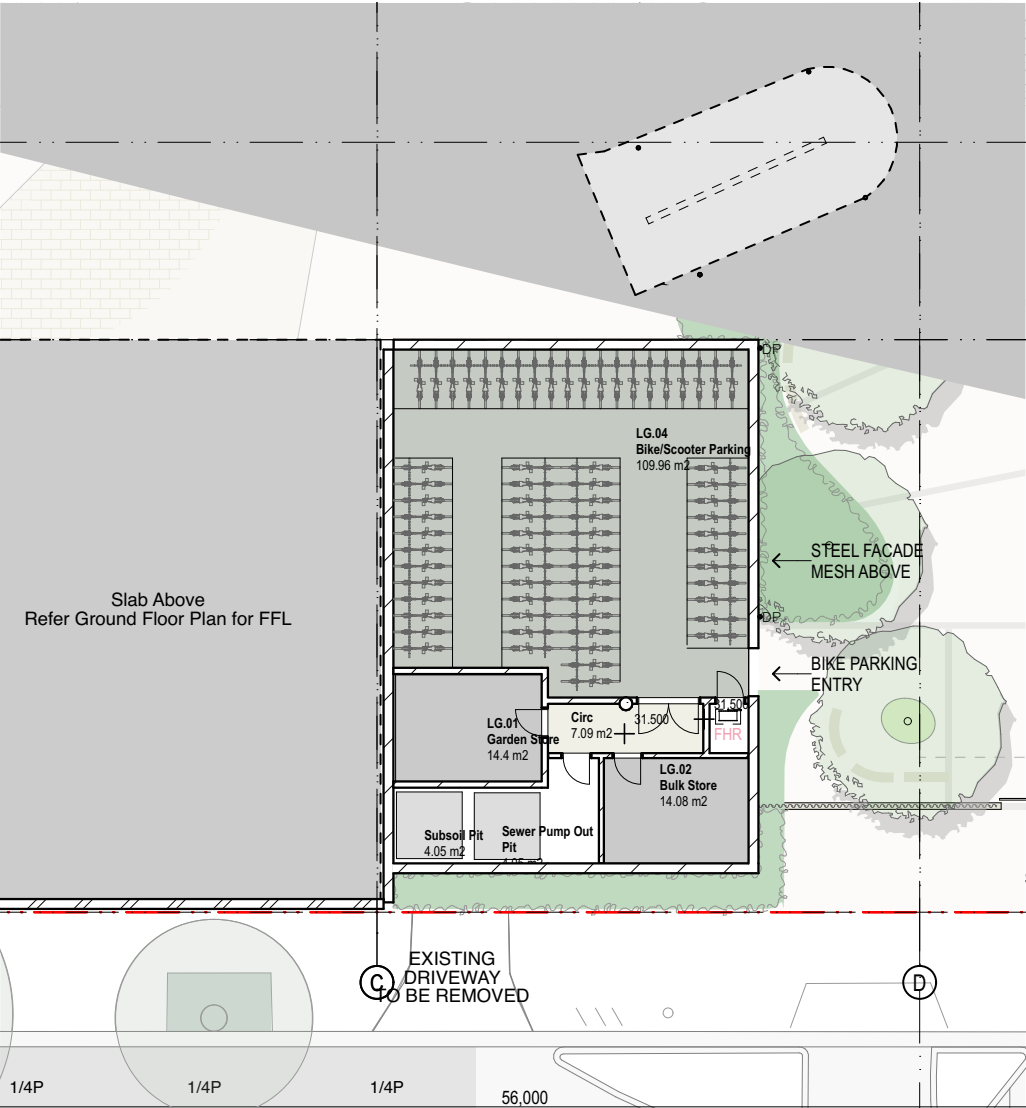
Lower Ground Floor Plan Comparisons

The bicycle storage area has been re-planned and we have been able to accomodate an increase in bicycle and scooter parking.

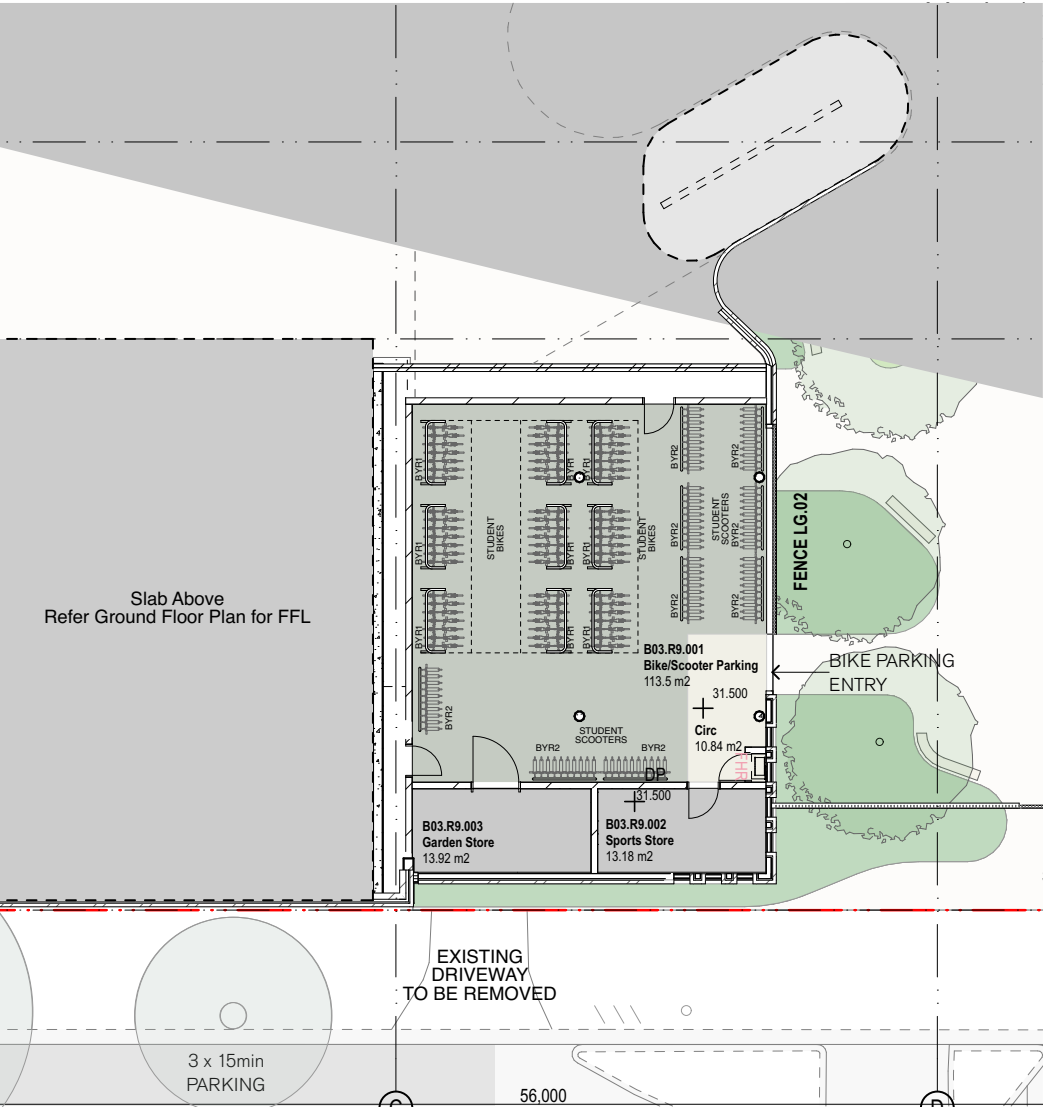
As a result, we now have 63 student bikes (9 junior bike racks that can hold 7 bikes each) and 110 scooters (10 scooters per rack), totaling 173 spaces for student bikes and scooters.

In addition, we have storage for 8 staff bicycles in the secure courtyard adjacent to Golden Grove Street.

Submitted SSDA - Lower Ground Floor Plan



SSDA Update - Lower Ground Floor Plan



6.0 ARCHITECTURAL DOCUMENTS

The following drawings accompany this report:

- General Arrangement Plans
- Elevations
- Sections

