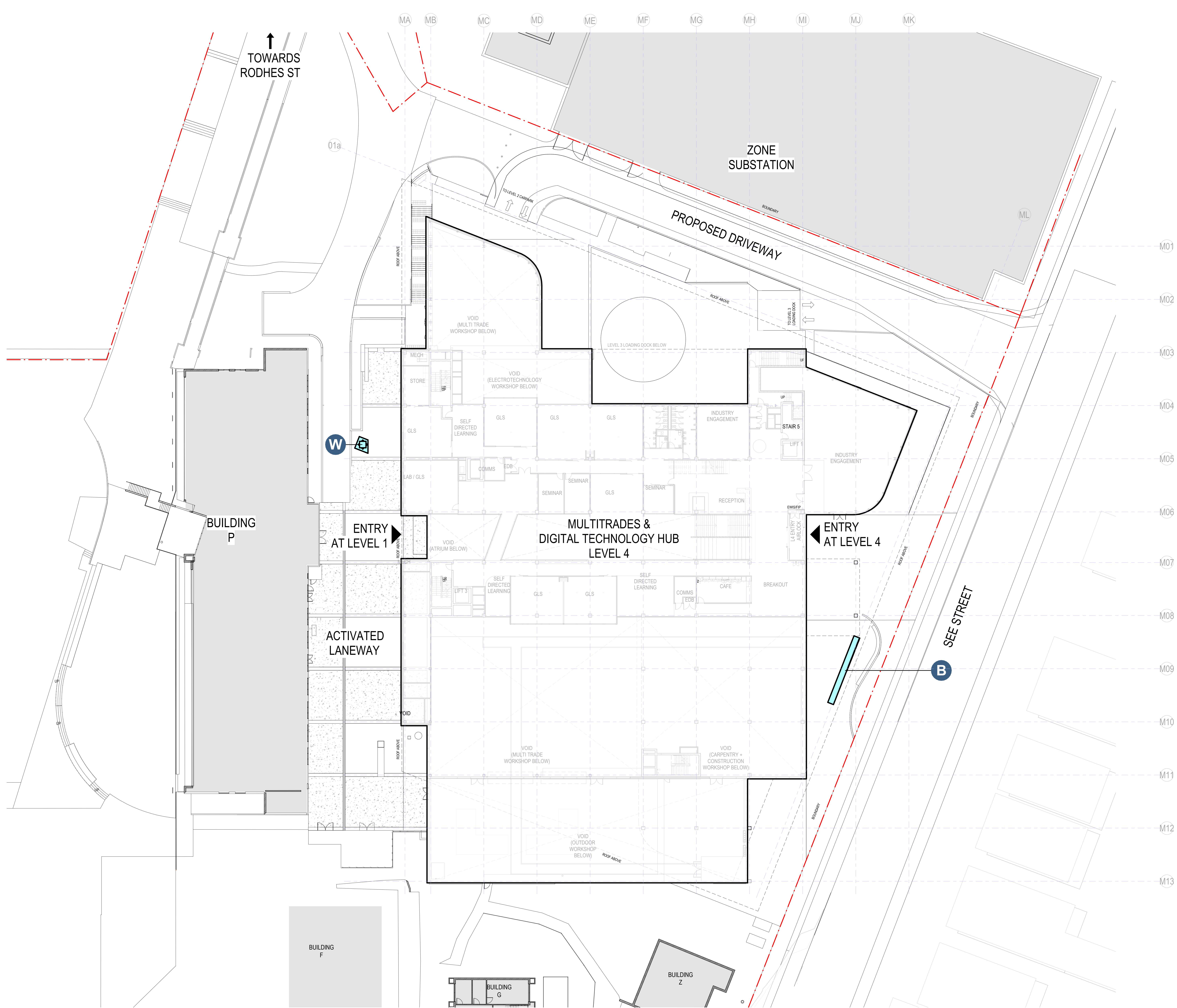
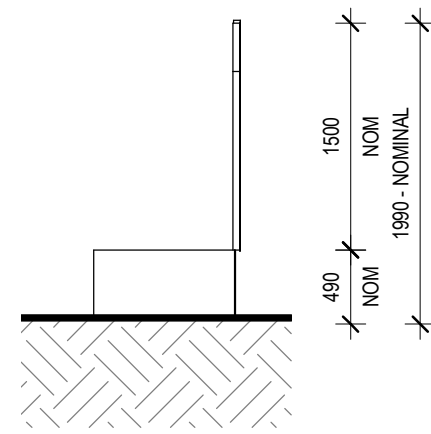
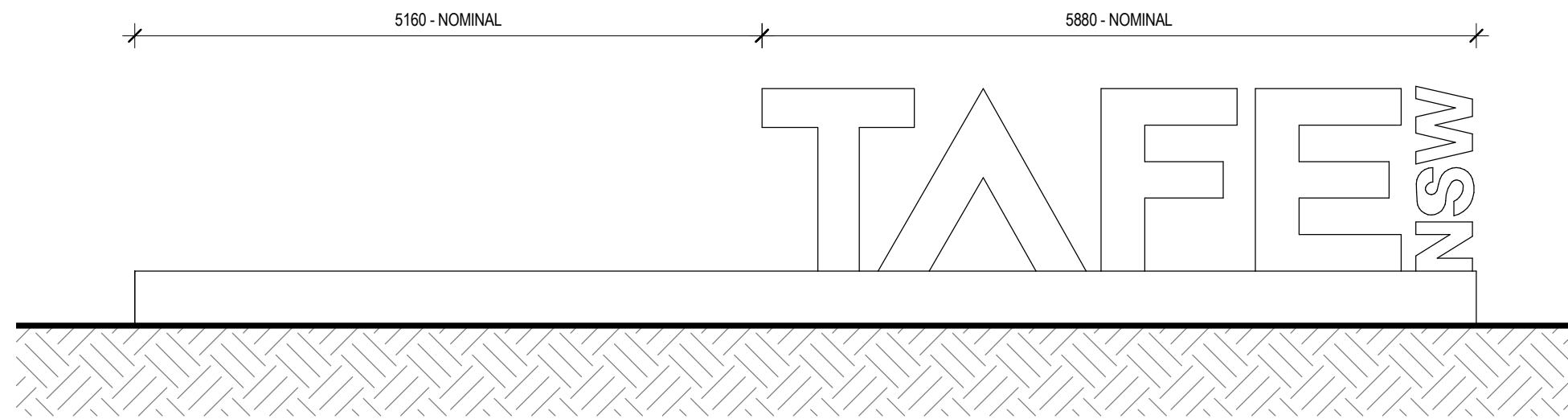
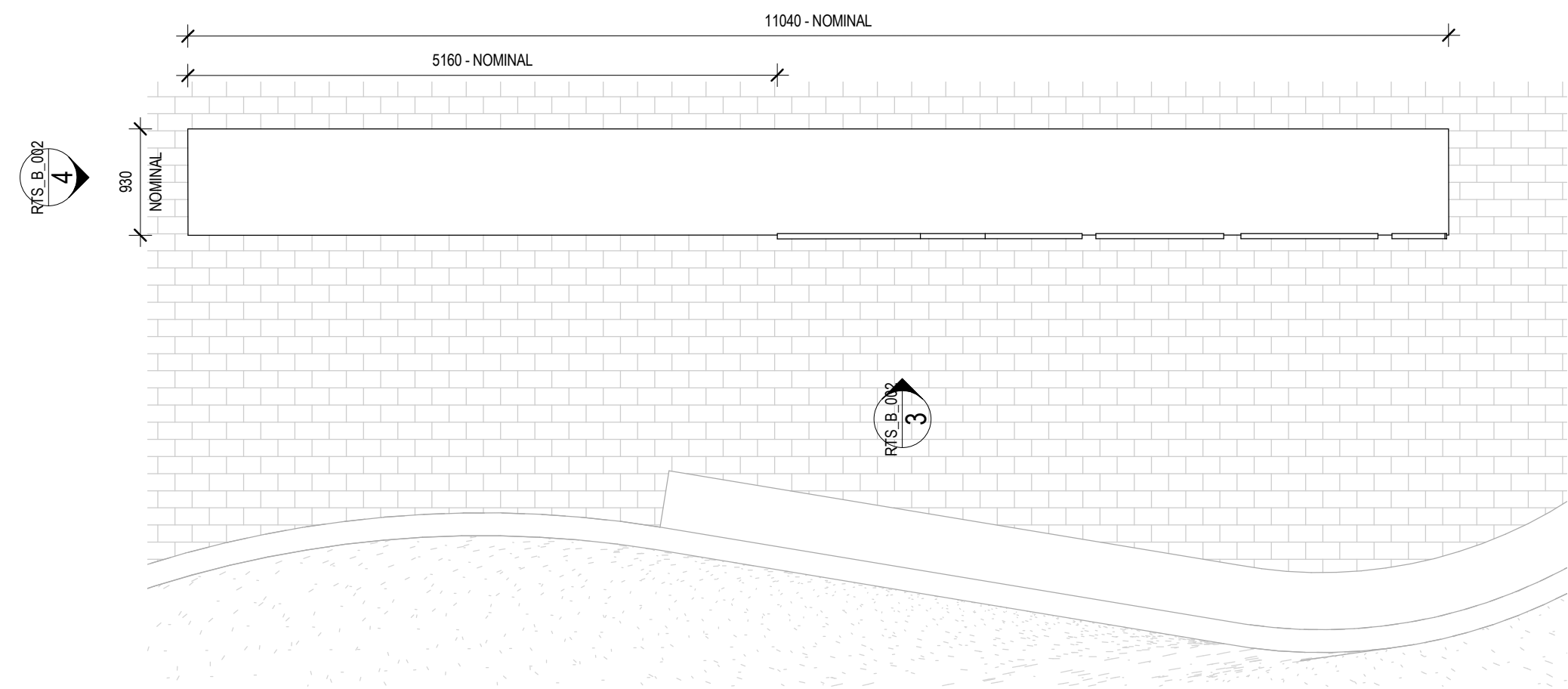
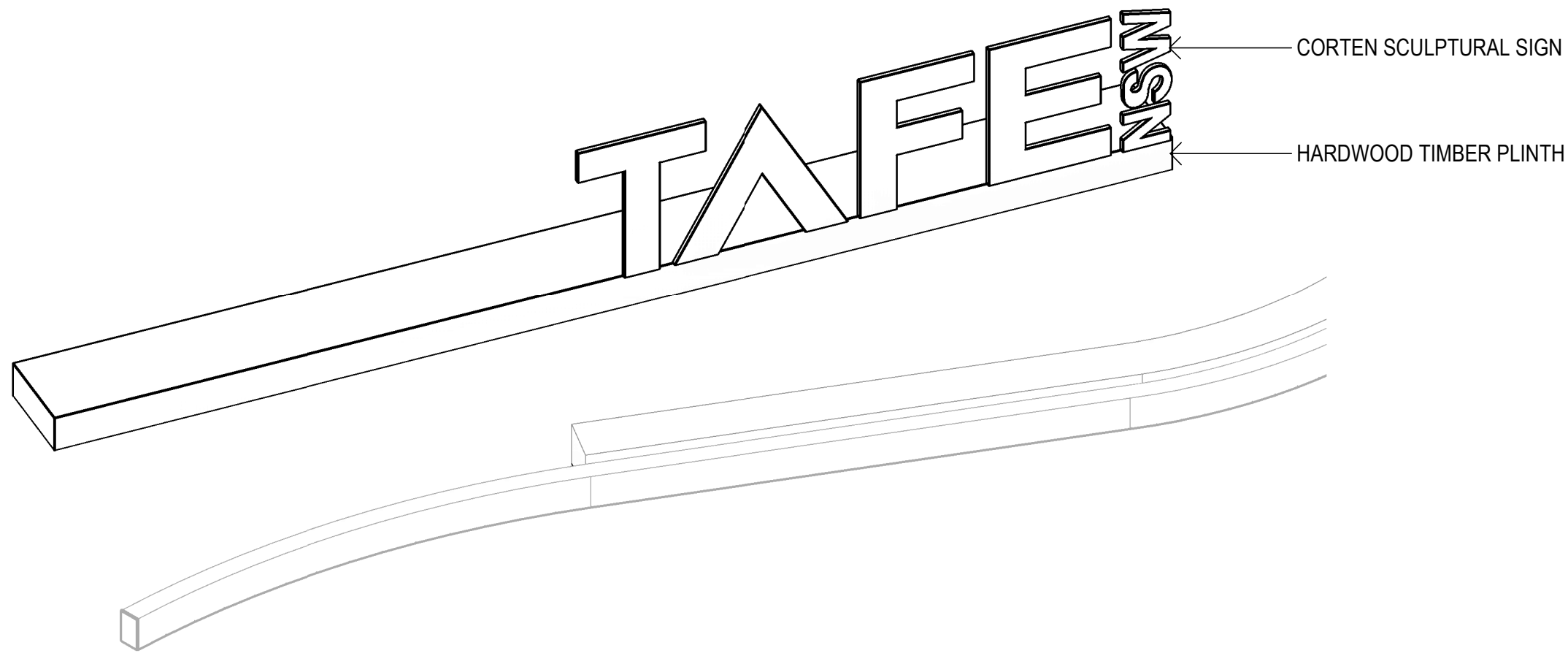


LEGEND

B BUSINESS SIGNAGE

W WAYFINDING SIGNAGE





1 TYPICAL BUSSINESS SIGNAGE - 3D VIEW
SCALE

2 BUSSINESS SIGNAGE - PLAN
SCALE 1 : 50

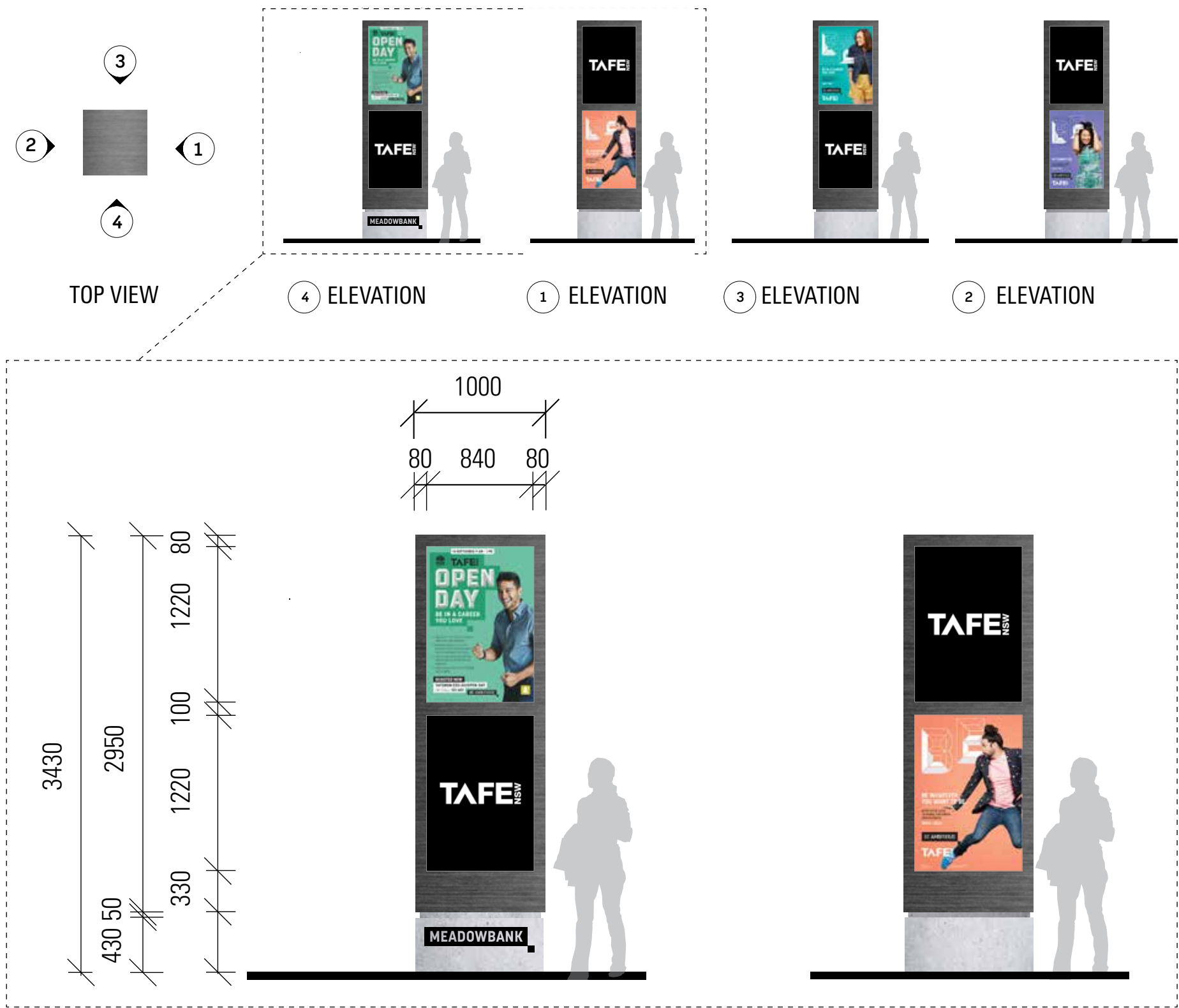
3 BUSSINESS SIGNAGE - ELEVATION
SCALE 1 : 50

4 BUSSINESS SIGNAGE - ELEVATION
SCALE 1 : 50

8

LED SCREEN HUB FOR DISPLAY OF PARTNER LOGOS & EVENTS

TOP VIEW & ELEVATIONS



Digital Screens

The key objectives/considerations for the digital plinths and screens throughout the precinct are:

- Signs/screens to be LED High resolution scrolling display/screen.
- Can play video content.
- Be a combination of video content and scrolling signs.
- Rotate brand graphics and artwork from each of the performing arts companies and commercial hirerd.
- Be programmable to ensure equitable recognition and percentage of time allocation.
- Provide clear bright image during the day and allow for brightness to auto adjust.
- Content changes between event information, commercial advertising and wayfinding map.
- All digital screen have the same size ratio, pitch and resolution.
- Ensure adequate UV protection for clear image during the day for external displays.
- Integrate speakers.
- Standard economy build aluminium die cast cabinet construction
- Full outdoor rated display installation
- Includes power and data patch leads to connect cabinets
- Externally mounted control system enclosure with 5M lead

Recommended supplier for digital screens and equipment:

LED signs, Ossie Cesaro, 0417 926 014, ossie.c@led-signs.biz

Base

GFRC similar/same to specifications for Site identification.

Cabinet

Internal structural frame clad in composite panels Alpolic or similar to match Alpolic M7991-G30.

Shopdrawing to show detailed panel layout, preferably one panel for the full height. And all panels folded around the edges so that mechanical fixing is from within the frame and not visible on the face.

This is a high-quality item. In case of an external location (location not defined yet), the cabinet has to be weatherproof and the signage contractor has to allow for that in construction method and pricing.

Digital displays

As per bullet points on drawing.

Signage contractor to advise on protection of screens and allow for recommendation in pricing.

NOTE: These are intent drawings only 1. Do not scale this drawing. Do not trace and do not scan. 2. Structural design and certification by contractor/engineer.			3. No electronic artwork supplied unless otherwise specified. 4. Application of graphics to sign is subject to client approval.			5. Manufacture subject to approved contractors shop drawing. 6. Dimensions to be verified onsite by contractor. 7. All fixings to be non-corrosive.			8. All workmanship and materials to be strictly in accordance with current and relevant Australian Standards Codes and Local Government requirements.			© 2020 Minale Tattersfield No part of this work may be reproduced or altered by any process, or any other exclusive right exercised, without the permission of Minale Tattersfield Design Pty Ltd. 13a/47 Neridah Street, Chatswood, 2067.			Minale Tattersfield Sydney London Paris Milan Moscow Brussels			ISSUE B ISSUED FOR Tender DATE 04.05.2020		
																		CLIENT Gray Puksand		
																		PROJECT TAFE NSW Meadowbank Education Precinct Phase 2.1		
																		DOCUMENT Wayfinding & Signages		
JOB No. S3316			DOC No. S3316-08			DWG DWG.8			DRAWN BY LH			CHECKED BY HG			SCALE NTS/As shown at A3					

LED SCREEN HUB FOR DISPLAY OF PARTNER LOGOS & EVENTS

3D VIEW

9



Additional information for external displays:

- Standard economy build aluminium die cast cabinet construction
- Full outdoor rated display installation
- Includes power and data patch leads to connect cabinets
- Externally mounted control system enclosure with 5M lead

NOTE:

These are intent drawings only

1. Do not scale this drawing.
Do not trace and do not scan.

2. Structural design and certification by contractor/engineer.

3. No electronic artwork supplied unless otherwise specified.

4. Application of graphics to sign is subject to client approval.

5. Manufacture subject to approved contractors shop drawing.

6. Dimensions to be verified onsite by contractor.

7. All fixings to be non-corrosive.

8. All workmanship and materials to be strictly in accordance with current and relevant Australian Standards Codes and Local Government requirements.

© 2020 Minale Tattersfield

No part of this work may be reproduced or altered by any process, or any other exclusive right exercised, without the permission of Minale Tattersfield Design Pty Ltd.
13a/47 Neridah Street, Chatswood, 2067.

Minale Tattersfield

Sydney | London | Paris | Milan | Moscow | Brussels

ISSUE	B	ISSUED FOR			Tender	DATE	04.05.2020				
CLIENT	Gray Puksand										
PROJECT	TAFE NSW Meadowbank Education Precinct Phase 2.1										
DOCUMENT	Wayfinding & Signages										
JOB No	S3316	DOC No.	S3316-08	DWG	DWG.9	DRAWN BY	LH	CHECKED BY	HG	SCALE	NTS/As shown at A3