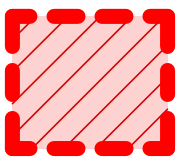
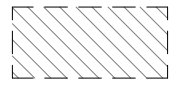


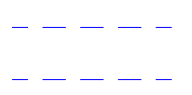
LEGEND



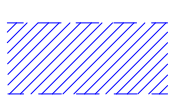
DEMOLITION AND
REMOVAL OF ALL
HARDSTAND AREAS AND
STRUCTURES WITHIN THE
EXISTING AT-GRADE CAR
PARK, INCLUDING ALL
KERBS, GUTTERING,
BOLLARDS, BOOM GATES,
TRAFFIC CALMING
DEVICES, LIGHT POLES,
SIGNAGE STRUCTURES,
PERIMETER FENCING AND
GATES.



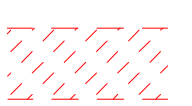
EXISTING STORMWATER EASEMENT



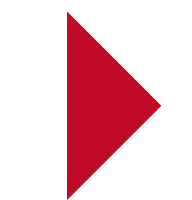
EXISTING ELECTRICITY EASEMENT



EXISTING ELECTRICITY
EASEMENT TO BE
ABOLISHED



EXISTING RIGHT OF
CARRIAGE
TO BE ABOLISHED



EXISTING VEHICULAR ACCESS



BOUNDARY LINE



EXISTING BUILDING NAME

GRAY PUKSAND

DISCLAIMER

This document may not be secure, may be corrupted in transmission or due to software incompatibility and/or may be amended or altered by third parties after leaving Gray Puksand's possession

Gray Puksand is not responsible for and accepts no liability for such matters. Subject only to any conflicting provision within any prior binding agreement by Gray Puksand (which agreement may also contain additional conditions relating to this document and its use):

1. The content of this document is confidential and copyright in it belongs to Gray Puksand. They are permitted only to be opened, read and used by the addressee.

2. All users of this document must carry out all relevant investigations and must examine, take advice as required and satisfy themselves concerning the contents, correctness and sufficiency of the attachment and its contents for their purposes.

3. To the extent permitted by law, all conditions and warranties concerning this document or any use to which they may be put (whether as to quality, outcome, fitness, care, skill or otherwise) whether express or implied by statute, common law, equity, trade, custom or usage or otherwise are expressly excluded.

4. Any person using or relaying document releases indemnifies, and will keep indemnified, Gray Puksand against all claims, liabilities, loss, costs and expenses arising directly or indirectly out of or in connection with such use or reliance including without limitation any misrepresentation, error or defect in this document.

Contractors to use Architectural drawings for set out.
Contractors to check & verify all Dimensions on Site prior to Construction/Fabrication.
Figured Dimensions take precedence over Scaled Dimensions.
Any Discrepancies should be immediately referred to the Architect.
All work to comply with N.C.C. Statutory Authorities & Relevant Australian Standards.

NSW Nominated Architects Scott Moylan 7147 Craig Saltmarsh 6569

[illegible]

PROJECT NO	220014
DRAWN	RD
CHECKED	BH
APPROVED	BH

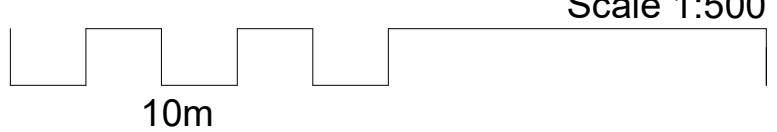
TAFE NSW - Meadowbank
MTDTH & Multistorey Carpark

SSDA APPROVAL ISSUE

DEMOLITION SITE PLAN NORTH

DWG #	DA01.1	REV	A
SCALE @ A1	As indicated		

Scale 1:500





LEGEND

- VEHICULAR ENTRY / EXIT
- PEDESTRIAN ENTRY / EXIT
- BOUNDARY LINE
- EXISTING BUILDING NAME

GRAY PUKSAND

DISCLAIMER
This document may not be secure, may be corrupted in transmission or due to software incompatibility and/or may be amended or altered by third parties after leaving Gray Puksand's possession.
Gray Puksand is not responsible for and accepts no liability for such matters. Subject only to any conflicting provision within any prior binding agreement, by Gray Puksand (which agreement may also contain additional conditions relating to this document and its use):
1. The content of this document is confidential and copyright in it belongs to Gray Puksand. They are permitted only to be opened, read and used by the addressee.
2. All users of this document must carry out all relevant investigations and must examine, take advice as required and satisfy themselves concerning the contents, correctness and sufficiency of the attachment and its contents for their purposes.
3. To the extent permitted by law, all conditions and warranties concerning this document or any use to which they may be put (whether as to quality, outcome, fitness, care, skill or otherwise) whether express or implied by statute, common law, equity, trade, custom or usage or otherwise are expressly excluded.
4. Any person using or relying on this document releases indemnifies, and will keep indemnified, Gray Puksand against all claims, liabilities, loss, costs and expenses arising directly or indirectly out of or in connection with such use or reliance including without limitation any misrepresentation, error or defect in this document.
Contractors to use Architectural drawings for set out.
Contractors to check & verify all Dimensions on Site prior to Construction/Fabrication. Figured Dimensions take precedence over Scaled Dimensions.
Any Discrepancies should be immediately referred to the Architect.
All work to comply with N.C.C. Statutory Authorities & Relevant Australian Standards.
NSW Nominated Architects Scott Moylan 7147 Craig Saltmarsh 6569

HANSEN YUNCKEN



REV	DESCRIPTION	DATE
A	Issue for SSDA	04-10-2019
B	Issue for SSDA	09-10-2019
C	Issue for SSDA	30-04-2020
D	Issue for SSDA	08-07-2020

PROJECT NO	220014
DRAWN	RD
CHECKED	BH
APPROVED	BH

TAFE NSW - Meadowbank
MTDTH & Multistorey Carpark

SSDA APPROVAL ISSUE

SITE ANALYSIS PLAN

DWG #	DA02	REV	D
SCALE @ A1	As indicated		

Scale 1:1000

20m



LEGEND

- EXTENT OF SSD SCOPE
- EXISTING STORMWATER EASEMENT
- EXISTING ELECTRICITY EASEMENT
- PEDESTRIAN ACCESS
- BOUNDARY LINE
- EXISTING BUILDING NAME

GRAY PUKSAND

DISCLAIMER
This document may not be secure, may be corrupted in transmission or due to software incompatibility and/or may be amended or altered by third parties after leaving Gray Puksand's possession.
Gray Puksand is not responsible for and accepts no liability for such matters. Subject only to any conflicting provision within any prior binding agreement, by Gray Puksand (which agreement may also contain additional conditions relating to this document and its use):
1. The content of this document is confidential and copyright in it belongs to Gray Puksand. They are permitted only to be opened, read and used by the addressee.
2. All users of this document must carry out all relevant investigations and must examine, take advice as required and satisfy themselves concerning the contents, correctness and sufficiency of the attachment and its contents for their purposes.
3. To the extent permitted by law, all conditions and warranties concerning this document or any use to which they may be put (whether as to quality, outcome, fitness, care, skill or otherwise) whether express or implied by statute, common law, equity, trade, custom or usage or otherwise are expressly excluded.
4. Any person using or relying on document releases indemnifies, and will keep indemnified, Gray Puksand against all claims, liabilities, loss, costs and expenses arising directly or indirectly out of or in connection with such use or reliance including without limitation any misrepresentation, error or defect in this document.
Contractors to use Architectural drawings for set out.
Contractors to check & verify all Dimensions on Site prior to Construction/Fabrication. Figured Dimensions take precedence over Scaled Dimensions.
Any Discrepancies should be immediately referred to the Architect.
All work to comply with N.C.C. Statutory Authorities & Relevant Australian Standards.
NSW Nominated Architects Scott Moylan 7147 Craig Saltmarsh 6569

HANSEN YUNCKEN



REV	DESCRIPTION	DATE
A	Issue for SSDA	04-10-2019
B	Issue for SSDA	09-10-2019
C	Issue for SSDA	29-01-2020
D	Issue for SSDA	30-04-2020
E	Issue for SSDA	09-07-2020

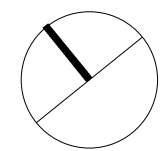
PROJECT NO	220014
DRAWN	RD
CHECKED	BH
APPROVED	BH

TAFE NSW - Meadowbank
MTDTH & Multistorey Carpark

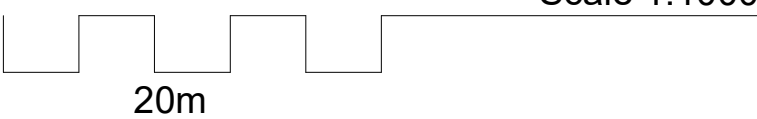
SSDA APPROVAL ISSUE

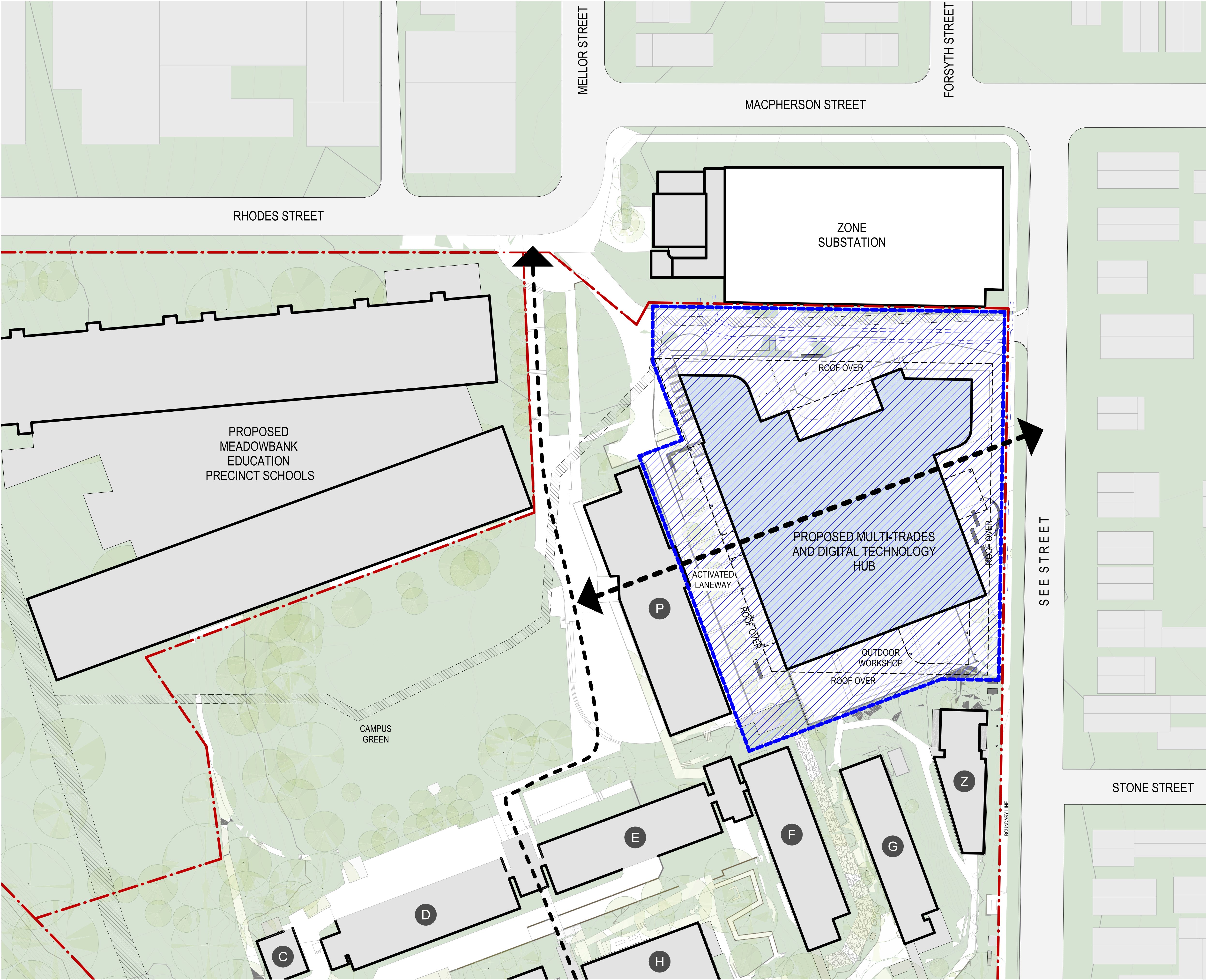
PROPOSED SITE PLAN

DWG #	DA03	REV	E
SCALE @ A1	As indicated		



Scale 1:1000





LEGEND

- EXTENT OF SSD SCOPE
- EXISTING STORMWATER EASEMENT
- EXISTING ELECTRICITY EASEMENT
- PEDESTRIAN ACCESS
- BOUNDARY LINE
- EXISTING BUILDING NAME

GRAY PUKSAND

DISCLAIMER
This document may not be secure, may be corrupted in transmission or due to software incompatibility and/or may be amended or altered by third parties after leaving Gray Puksand's possession.
Gray Puksand is not responsible for and accepts no liability for such matters. Subject only to any conflicting provision within any prior binding agreement, by Gray Puksand (which agreement may also contain additional conditions relating to this document and its use):
1. The content of this document is confidential and copyright in it belongs to Gray Puksand. They are permitted only to be opened, read and used by the addressee.
2. All users of this document must carry out all relevant investigations and must examine, take advice as required and satisfy themselves concerning the contents, correctness and sufficiency of the attachment and its contents for their purposes.
3. To the extent permitted by law, all conditions and warranties concerning this document or any use to which they may be put (whether as to quality, outcome, fitness, care, skill or otherwise) whether express or implied by statute, common law, equity, trade, custom or usage or otherwise are expressly excluded.
4. Any person using or relying on this document releases indemnifies, and will keep indemnified, Gray Puksand against all claims, liabilities, loss, costs and expenses arising directly or indirectly out of or in connection with such use or reliance including without limitation any misrepresentation, error or defect in this document.
Contractors to use Architectural drawings for set out.
Contractors to check & verify all Dimensions on Site prior to Construction/Fabrication. Figured Dimensions take precedence over Scaled Dimensions.
Any Discrepancies should be immediately referred to the Architect.
All work to comply with N.C.C. Statutory Authorities & Relevant Australian Standards.
NSW Nominated Architects Scott Moylan 7147 Craig Saltmarsh 6569

HANSEN YUNCKEN



REV	DESCRIPTION	DATE
A	Issue for SSDA	04-10-2019
B	Issue for SSDA	09-10-2019
C	Issue for SSDA	29-01-2020
D	Issue for SSDA	08-07-2020

PROJECT NO	220014
DRAWN	RD
CHECKED	BH
APPROVED	BH

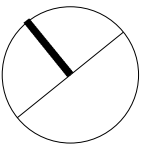
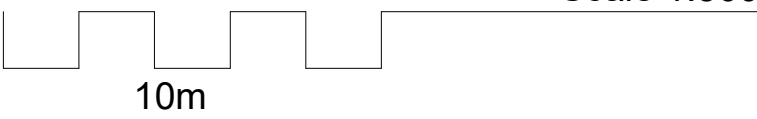
TAFE NSW - Meadowbank
MTDTH & Multistorey Carpark

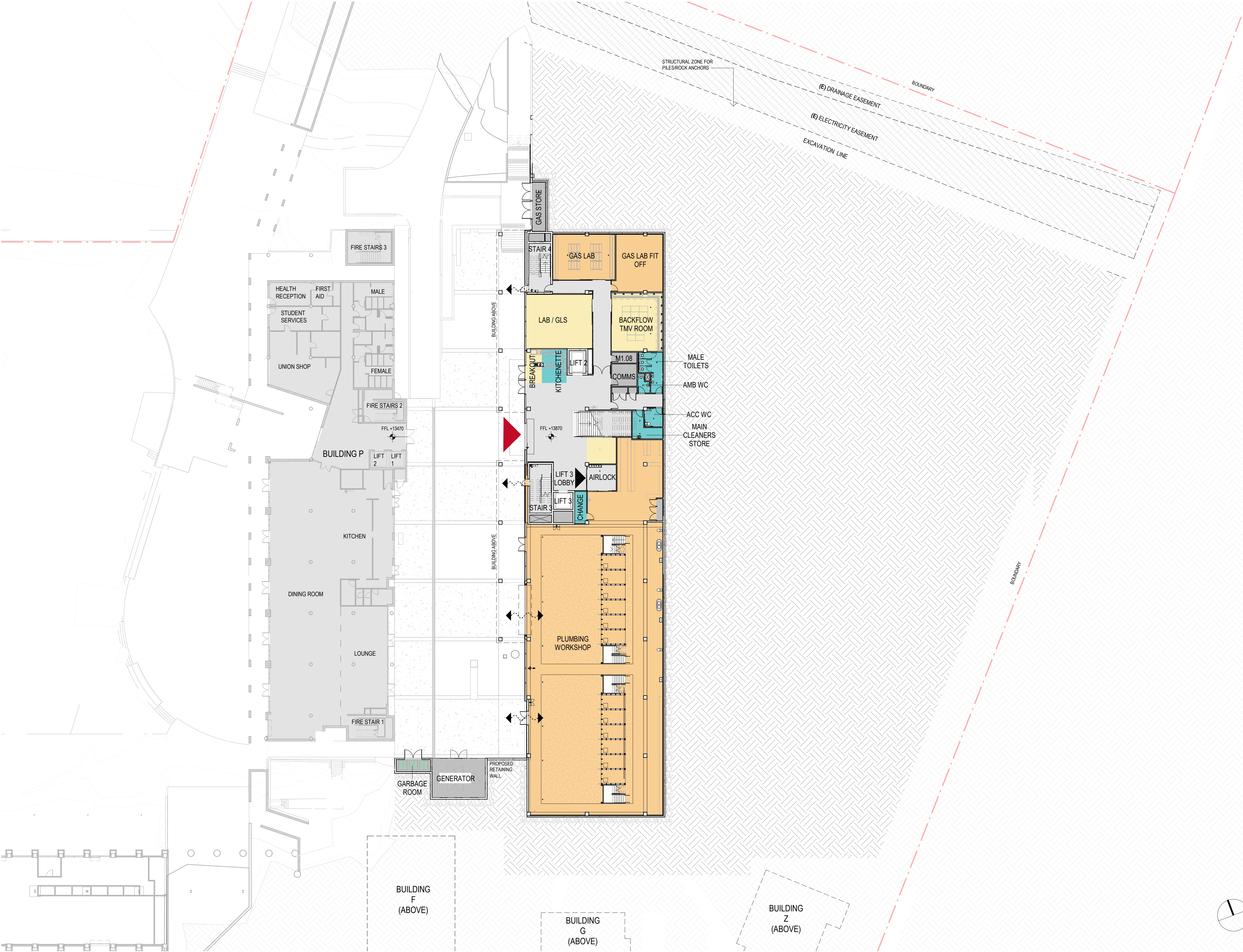
SSDA APPROVAL ISSUE

PROPOSED SITE PLAN NORTH

DWG #	DA04	REV	D
SCALE @ A1	As indicated		

Scale 1:500





- AMENITIES
- APPLIED RESEARCH
- CARPARK
- CARPARK SERVICES
- CIRCULATION
- INDUSTRY ENGAGEMENT
- LEARNING SPACES
- SERVICES
- STORE
- WORKSHOP
- WORKSPACE

GRAY PUKSAND

DISCLAIMER

This document may not be secure, may be corrupted in transmission or due to software incompatibility and/or may be amended or altered by third parties after leaving Gray Puksand's possession.

Gray Puksand is not responsible for and accepts no liability for such matters. Subject only to any conflicting provision within any prior binding agreement, by Gray Puksand (which agreement may also contain additional conditions relating to this document and its use):

- The content of this document is confidential and copyright in it belongs to Gray Puksand. They are permitted only to be opened, read and used by the addressee.
- All users of this document must carry out all relevant investigations and must examine, take advice as required and satisfy themselves concerning the contents, correctness and sufficiency of the attachment and its contents for their purposes.
- To the extent permitted by law, all conditions and warranties concerning this document or any use to which they may be put (whether as to quality, outcome, fitness, care, skill or otherwise) whether express or implied by statute, common law, equity, trade, custom or usage or otherwise are expressly excluded.
- Any person using or relying on document releases indemnifies, and will keep indemnified, Gray Puksand against all claims, liabilities, loss, costs and expenses arising directly or indirectly out of or in connection with such use or reliance including without limitation any misrepresentation, error or defect in this document.

Contractors to use Architectural drawings for set out.
Contractors to check & verify all Dimensions on Site prior to Construction/Fabrication. Figured Dimensions take precedence over Scaled Dimensions.
Any Discrepancies should be immediately referred to the Architect.
All work to comply with N.C.C. Statutory Authorities & Relevant Australian Standards.

NSW Nominated Architects Scott Moylan 7147 Craig Saltmarsh 6569

HANSEN YUNCKEN



REV	DESCRIPTION	DATE
A	Issue for SSDA	04-10-2019
B	Issue for SSDA	09-10-2019
C	Issue for SSDA	30-06-2020
D	Issue for SSDA	08-07-2020

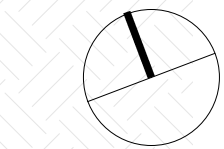
PROJECT NO	220014
DRAWN	RD
CHECKED	RD
APPROVED	BH

TAFE NSW - Meadowbank
Multi-Trades and Digital
Technology Hub

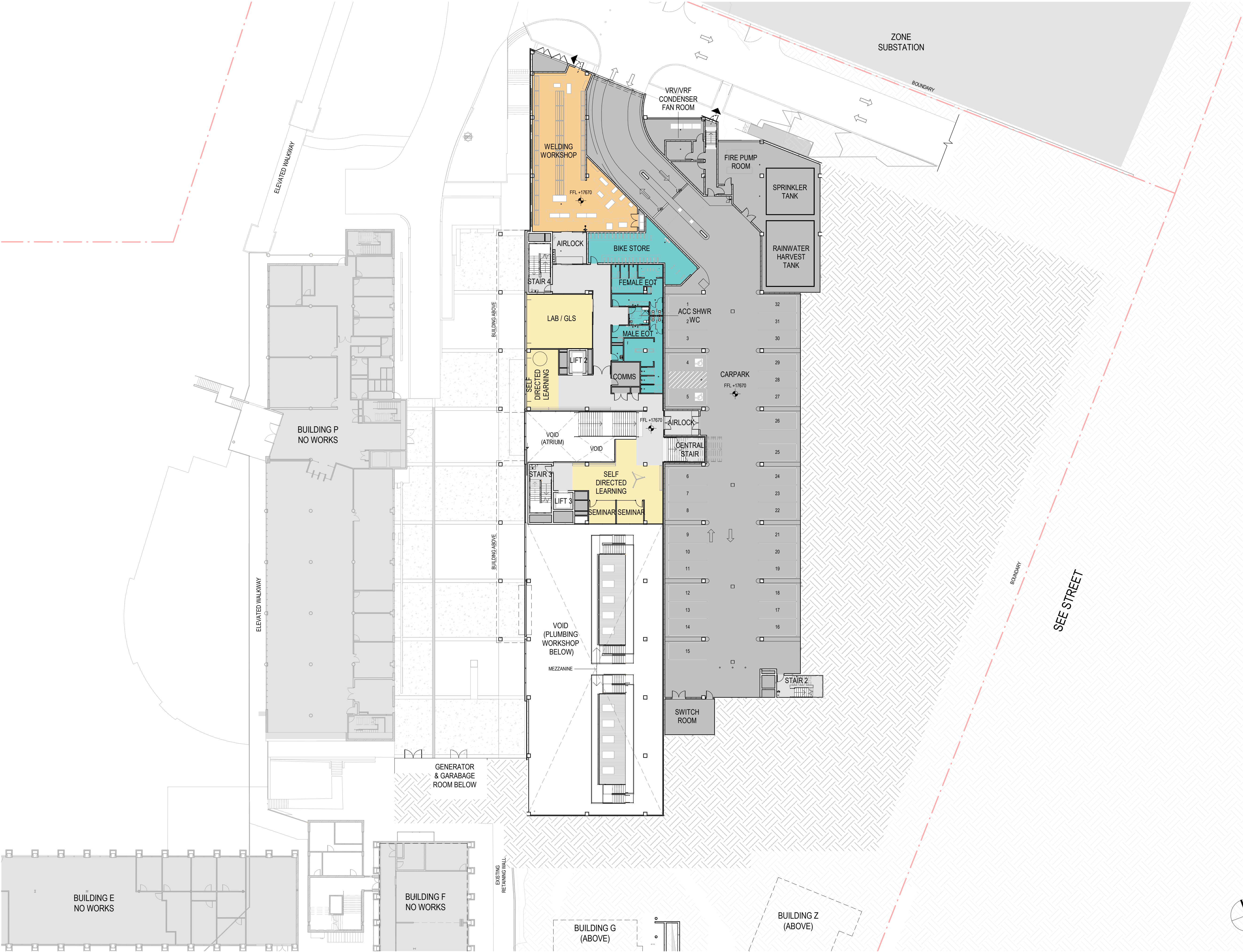
SSDA APPROVAL ISSUE

LEVEL 01 FLOOR PLAN

DWG #	DA11	REV	D
SCALE @ A1	1 : 250		



Scale 1:250 10M



- AMENITIES
- APPLIED RESEARCH
- CARPARK
- CARPARK SERVICES
- CIRCULATION
- INDUSTRY ENGAGEMENT
- LEARNING SPACES
- SERVICES
- STORE
- WORKSHOP
- WORKSPACE

GRAY PUKSAND

DISCLAIMER

This document may not be secure, may be corrupted in transmission or due to software incompatibility and/or may be amended or altered by third parties after leaving Gray Puksand's possession.

Gray Puksand is not responsible for and accepts no liability for such matters. Subject only to any conflicting provision within any prior binding agreement, by Gray Puksand (which agreement may also contain additional conditions relating to this document and its use):

- The content of this document is confidential and copyright in it belongs to Gray Puksand. They are permitted only to be opened, read and used by the addressee.
- All users of this document must carry out all relevant investigations and must examine, take advice as required and satisfy themselves concerning the contents, correctness and sufficiency of the attachment and its contents for their purposes.
- To the extent permitted by law, all conditions and warranties concerning this document or any use to which they may be put (whether as to quality, outcome, fitness, care, skill or otherwise) whether express or implied by statute, common law, equity, trade, custom or usage or otherwise are expressly excluded.
- Any person using or relying on this document releases indemnifies, and will keep indemnified, Gray Puksand against all claims, liabilities, loss, costs and expenses arising directly or indirectly out of or in connection with such use or reliance including without limitation any misrepresentation, error or defect in this document.

Contractors to use Architectural drawings for set out.
Contractors to check & verify all Dimensions on Site prior to Construction/Fabrication.
Figured Dimensions take precedence over Scaled Dimensions.
Any Discrepancies should be immediately referred to the Architect.
All work to comply with N.C.C. Statutory Authorities & Relevant Australian Standards.

NSW Nominated Architects Scott Moylan 7147 Craig Saltmarsh 6569

HANSEN YUNCKEN



REV	DESCRIPTION	DATE
A	Issue for SSDA	04-10-2019
B	Issue for SSDA	09-10-2019
C	Issue for SSDA	30-06-2020
D	Issue for SSDA	08-07-2020

PROJECT NO	220014
DRAWN	HA
CHECKED	RD
APPROVED	BH

TAFE NSW - Meadowbank
Multi-Trades and Digital
Technology Hub

SSDA APPROVAL ISSUE

LEVEL 02 FLOOR PLAN

DWG #	DA12	REV	D
SCALE @ A1	1 : 250		



- AMENITIES
- APPLIED RESEARCH
- CARPARK
- CARPARK SERVICES
- CIRCULATION
- INDUSTRY ENGAGEMENT
- LEARNING SPACES
- SERVICES
- STORE
- WORKSHOP
- WORKSPACE

GRAY PUKSAND

DISCLAIMER
This document may not be secure, may be corrupted in transmission or due to software incompatibility and/or may be amended or altered by third parties after leaving Gray Puksand's possession.

Gray Puksand is not responsible for and accepts no liability for such matters. Subject only to any conflicting provision within any prior binding agreement, by Gray Puksand (which agreement may also contain additional conditions relating to this document and its use):

- The content of this document is confidential and copyright in it belongs to Gray Puksand. They are permitted only to be opened, read and used by the addressee.
- All users of this document must carry out all relevant investigations and must examine, take advice as required and satisfy themselves concerning the contents, correctness and sufficiency of the attachment and its contents for their purposes.
- To the extent permitted by law, all conditions and warranties concerning this document or any use to which they may be put (whether as to quality, outcome, fitness, care, skill or otherwise) whether express or implied by statute, common law, equity, trade, custom or usage or otherwise are expressly excluded.
- Any person using or relying on this document releases, indemnifies, and will keep indemnified, Gray Puksand against all claims, liabilities, loss, costs and expenses arising directly or indirectly out of or in connection with such use or reliance including without limitation any misrepresentation, error or defect in this document.

Contractors to use Architectural drawings for set out.
Contractors to check & verify all Dimensions on Site prior to Construction/Fabrication. Figured Dimensions take precedence over Scaled Dimensions.
Any Discrepancies should be immediately referred to the Architect.
All work to comply with N.C.C. Statutory Authorities & Relevant Australian Standards.

NSW Nominated Architects Scott Moylan 7147 Craig Saltmarsh 6569

HANSEN YUNCKEN



REV	DESCRIPTION	DATE
A	Issue for SSDA	04-10-2019
B	Issue for SSDA	09-10-2019
C	Issue for SSDA	08-07-2020

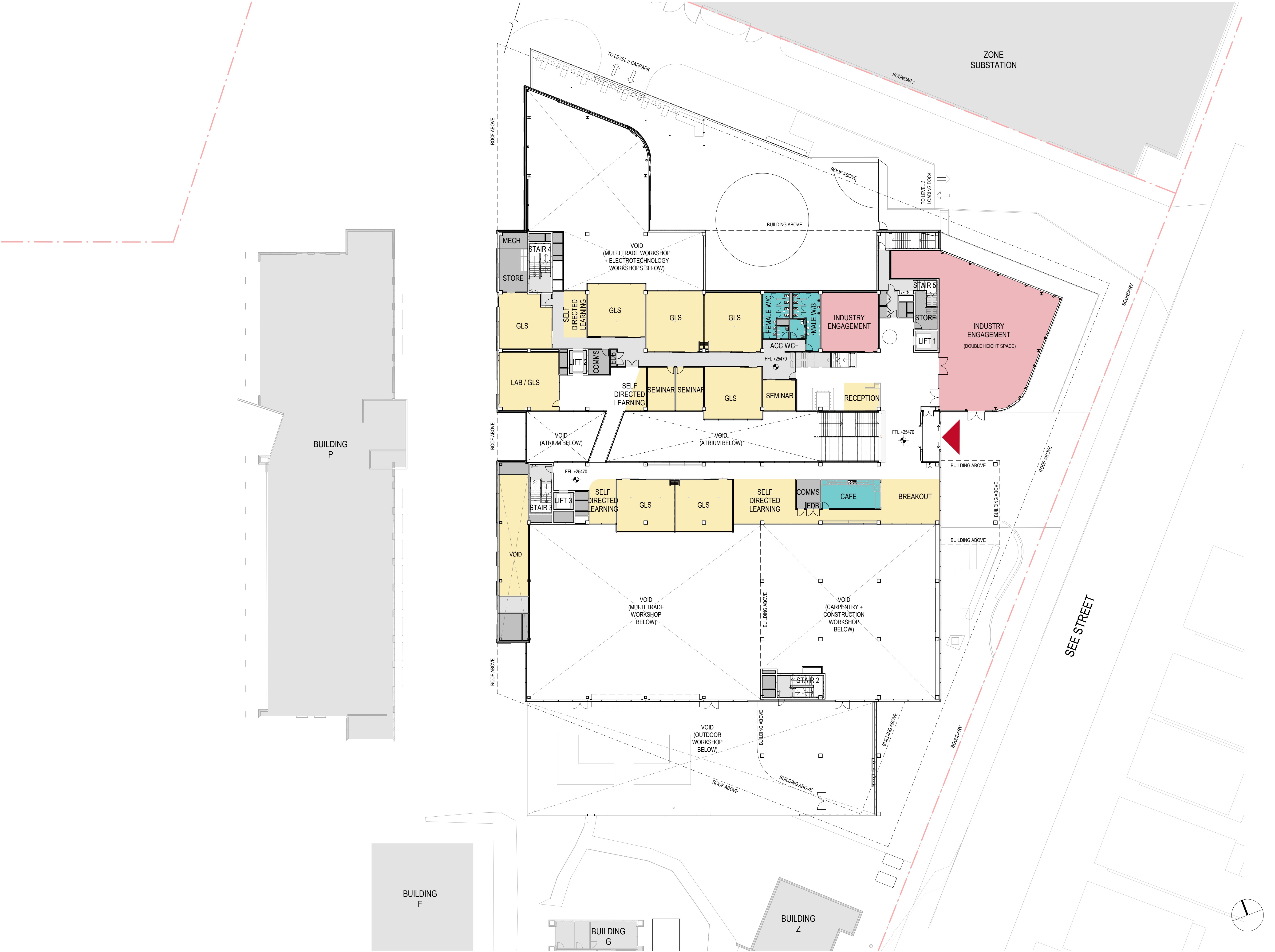
PROJECT NO	220014
DRAWN	HA
CHECKED	RD
APPROVED	BH

TAFE NSW - Meadowbank
Multi-Trades and Digital
Technology Hub

SSDA APPROVAL ISSUE

LEVEL 03 FLOOR PLAN

DWG #	DA13	REV	C
SCALE @ A1	1 : 250		



- AMENITIES
- APPLIED RESEARCH
- CARPARK
- CARPARK SERVICES
- CIRCULATION
- INDUSTRY ENGAGEMENT
- LEARNING SPACES
- SERVICES
- STORE
- WORKSHOP
- WORKSPACE

GRAY PUKSAND

DISCLAIMER
This document may not be secure, may be corrupted in transmission or due to software incompatibility and/or may be amended or altered by third parties after leaving Gray Puksand's possession.

Gray Puksand is not responsible for and accepts no liability for such matters. Subject only to any conflicting provision within any prior binding agreement, by Gray Puksand (which agreement may also contain additional conditions relating to this document and its use):

- The content of this document is confidential and copyright in it belongs to Gray Puksand. They are permitted only to be opened, read and used by the addressee.
- All users of this document must carry out all relevant investigations and must examine, take advice as required and satisfy themselves concerning the contents, correctness and sufficiency of the attachment and its contents for their purposes.
- To the extent permitted by law, all conditions and warranties concerning this document or any use to which they may be put (whether as to quality, outcome, fitness, care, skill or otherwise) whether express or implied by statute, common law, equity, trade, custom or usage or otherwise are expressly excluded.
- Any person using or relying on this document releases indemnifies, and will keep indemnified, Gray Puksand against all claims, liabilities, loss, costs and expenses arising directly or indirectly out of or in connection with such use or reliance including without limitation any misrepresentation, error or defect in this document.

Contractors to use Architectural drawings for set out.
Contractors to check & verify all Dimensions on Site prior to Construction/Fabrication. Figured Dimensions take precedence over Scaled Dimensions.
Any Discrepancies should be immediately referred to the Architect.
All work to comply with N.C.C. Statutory Authorities & Relevant Australian Standards.

NSW Nominated Architects Scott Moylan 7147 Craig Saltmarsh 6569

HANSEN YUNCKEN



REV	DESCRIPTION	DATE
A	Issue for SSDA	04-10-2019
B	Issue for SSDA	09-10-2019
C	Issue for SSDA	08-07-2020

PROJECT NO	220014
DRAWN	HA
CHECKED	RD
APPROVED	BH

TAFE NSW - Meadowbank
Multi-Trades and Digital
Technology Hub

SSDA APPROVAL ISSUE

LEVEL 04 FLOOR PLAN

DWG #	DA14	REV	C
SCALE @ A1	1 : 250		

B:\M_360\SSDA\SSDA130 Meadowbank Education Precinct TAFE\TNM\GP-AR-M.mxd 8/07/2020 5:09:34 PM



- AMENITIES
- APPLIED RESEARCH
- CARPARK
- CARPARK SERVICES
- CIRCULATION
- INDUSTRY ENGAGEMENT
- LEARNING SPACES
- SERVICES
- STORE
- WORKSHOP
- WORKSPACE

GRAY PUKSAND

DISCLAIMER

This document may not be secure, may be corrupted in transmission or due to software incompatibility and/or may be amended or altered by third parties after leaving Gray Puksand's possession.

Gray Puksand is not responsible for and accepts no liability for such matters. Subject only to any conflicting provision within any prior binding agreement, by Gray Puksand (which agreement may also contain additional conditions relating to this document and its use):

- The content of this document is confidential and copyright in it belongs to Gray Puksand. They are permitted only to be opened, read and used by the addressee.
- All users of this document must carry out all relevant investigations and must examine, take advice as required and satisfy themselves concerning the contents, correctness and sufficiency of the attachment and its contents for their purposes.
- To the extent permitted by law, all conditions and warranties concerning this document or any use to which they may be put (whether as to quality, outcome, fitness, care, skill or otherwise) whether express or implied by statute, common law, equity, trade, custom or usage or otherwise are expressly excluded.
- Any person using or relying on this document releases indemnifies, and will keep indemnified, Gray Puksand against all claims, liabilities, loss, costs and expenses arising directly or indirectly out of or in connection with such use or reliance including without limitation any misrepresentation, error or defect in this document.

Contractors to use Architectural drawings for set out.
Contractors to check & verify all Dimensions on Site prior to Construction/Fabrication.
Figured Dimensions take precedence over Scaled Dimensions.
Any Discrepancies should be immediately referred to the Architect.
All work to comply with N.C.C. Statutory Authorities & Relevant Australian Standards.

NSW Nominated Architects Scott Moylan 7147 Craig Saltmarsh 6569

HANSEN YUNCKEN



REV	DESCRIPTION	DATE
A	Issue for SSDA	04-10-2019
B	Issue for SSDA	09-10-2019
C	Issue for SSDA	08-07-2020

PROJECT NO	220014
DRAWN	HA
CHECKED	RD
APPROVED	BH

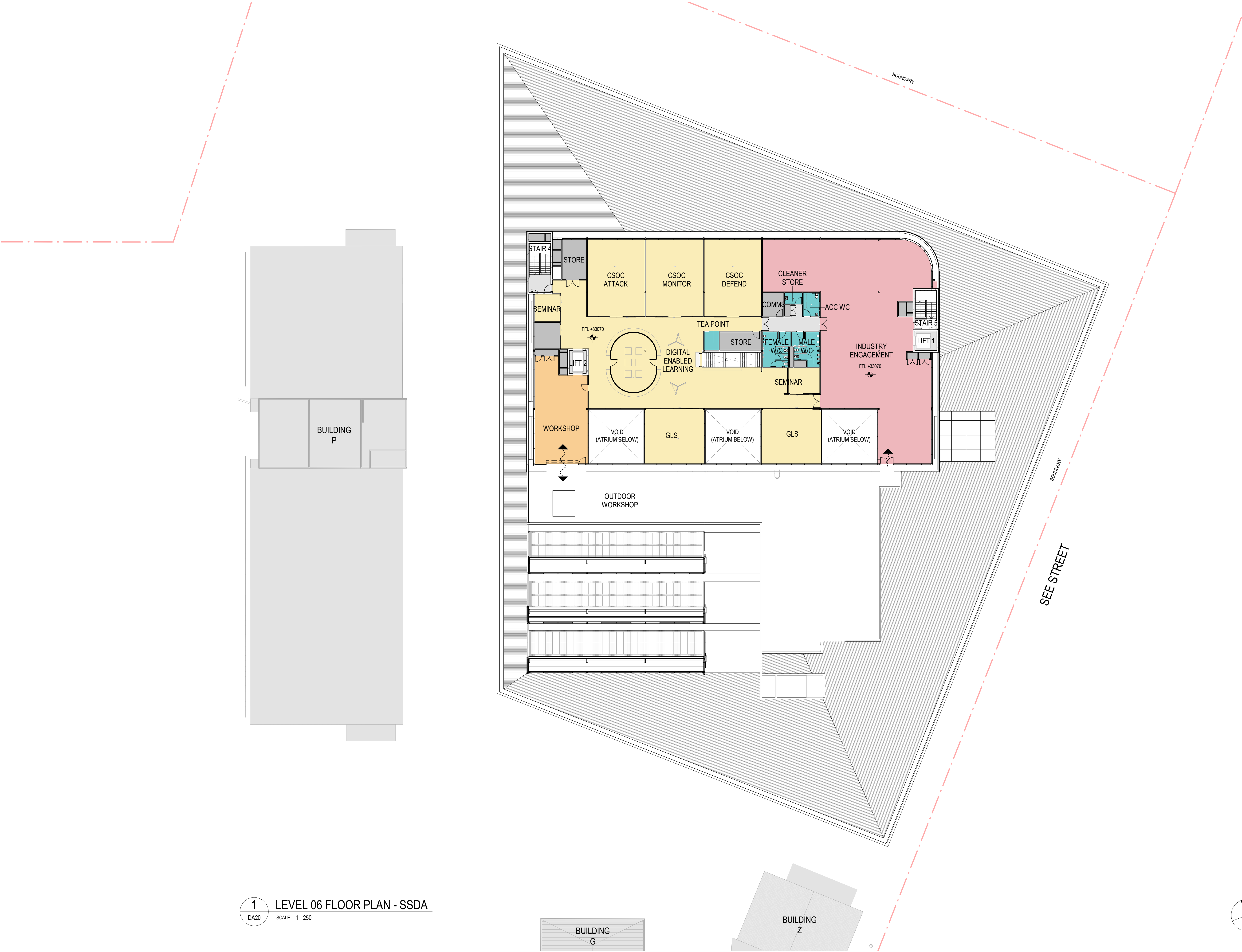
TAFE NSW - Meadowbank
Multi-Trades and Digital
Technology Hub

SSDA APPROVAL ISSUE

LEVEL 05 FLOOR PLAN

DWG #	DA15	REV	C
SCALE @ A1	1 : 250		

B:\M_360\SSC130 Meadowbank Education Precinct TAFE\TNM\GP-AR-M.int 8/07/2020 5:10:12 PM



1 LEVEL 06 FLOOR PLAN - SSDA
DA20 SCALE 1 : 250

- AMENITIES
- APPLIED RESEARCH
- CARPARK
- CARPARK SERVICES
- CIRCULATION
- INDUSTRY ENGAGEMENT
- LEARNING SPACES
- SERVICES
- STORE
- WORKSHOP
- WORKSPACE

GRAY PUKSAND

DISCLAIMER

This document may not be secure, may be corrupted in transmission or due to software incompatibility and/or may be amended or altered by third parties after leaving Gray Puksand's possession.

Gray Puksand is not responsible for and accepts no liability for such matters. Subject only to any conflicting provision within any prior binding agreement, by Gray Puksand (which agreement may also contain additional conditions relating to this document and its use):

- The content of this document is confidential and copyright in it belongs to Gray Puksand. They are permitted only to be opened, read and used by the addressee.
- All users of this document must carry out all relevant investigations and must examine, take advice as required and satisfy themselves concerning the contents, correctness and sufficiency of the attachment and its contents for their purposes.
- To the extent permitted by law, all conditions and warranties concerning this document or any use to which they may be put (whether as to quality, outcome, fitness, care, skill or otherwise) whether express or implied by statute, common law, equity, trade, custom or usage or otherwise are expressly excluded.
- Any person using or relying on this document releases indemnifies, and will keep indemnified, Gray Puksand against all claims, liabilities, loss, costs and expenses arising directly or indirectly out of or in connection with such use or reliance including without limitation any misrepresentation, error or defect in this document.

Contractors to use Architectural drawings for set out.
Contractors to check & verify all Dimensions on Site prior to Construction/Fabrication.
Figured Dimensions take precedence over Scaled Dimensions.
Any Discrepancies should be immediately referred to the Architect.
All work to comply with N.C.C. Statutory Authorities & Relevant Australian Standards.

NSW Nominated Architects Scott Moylan 7147 Craig Saltmarsh 6569

HANSEN YUNCKEN



REV	DESCRIPTION	DATE
A	Issue for SSDA	04-10-2019
B	Issue for SSDA	09-10-2019
C	Issue for SSDA	08-07-2020

PROJECT NO	220014
DRAWN	HA
CHECKED	RD
APPROVED	BH

TAFE NSW - Meadowbank
Multi-Trades and Digital
Technology Hub

SSDA APPROVAL ISSUE

LEVEL 06 FLOOR PLAN

DWG #	DA16	REV	C
SCALE @ A1	1 : 250		

Scale 1:250 10M

8/07/2020 5:10:45 PM BIM_360/SSC130 Meadowbank Education Precinct TAFE/TNM/GP-AR-M.mxd



GRAY PUKSAND

DISCLAIMER

This document may not be secure, may be corrupted in transmission or due to software incompatibility and/or may be amended or altered by third parties after leaving Gray Puksand's possession

Gray Puksand is not responsible for and accepts no liability for such matters. Subject only to any conflicting provision within any prior binding agreement, by Gray Puksand (which agreement may also contain additional conditions relating to this document and its use):

1. The content of this document is confidential and copyright in it belongs to Gray Puksand. They are permitted only to be opened, read and used by the addressee.
2. All users of this document must carry out all relevant investigations and must examine, take advice as required and satisfy themselves concerning the contents, correctness and sufficiency of the attachment and its contents for their purposes.
3. To the extent permitted by law, all conditions and warranties concerning this document or any use to which they may be put (whether as to quality, outcome, fitness, care, skill or otherwise) whether express or implied by statute, common law, equity, trade, custom or usage or otherwise are expressly excluded.
4. Any person using or relying on this document releases indemnifies, and will keep indemnified, Gray Puksand against all claims, liabilities, loss, costs and expenses arising directly or indirectly out of or in connection with such use or reliance including without limitation any misrepresentation, error or defect in this document.

Contractors to use Architectural drawings for set out.
Contractors to check & verify all Dimensions on Site prior to Construction/Fabrication. Figured Dimensions take precedence over Scaled Dimensions.
Any Discrepancies should be immediately referred to the Architect.
All work to comply with N.C.C. Statutory Authorities & Relevant Australian Standards.

NSW Nominated Architects Scott Moylan 7147 Craig Saltmarsh 6569

HANSEN YUNCKEN



REV	DESCRIPTION	DATE
A	Issue for SSDA	04-10-2019
B	Issue for SSDA	09-10-2019
C	Issue for SSDA	08-07-2020

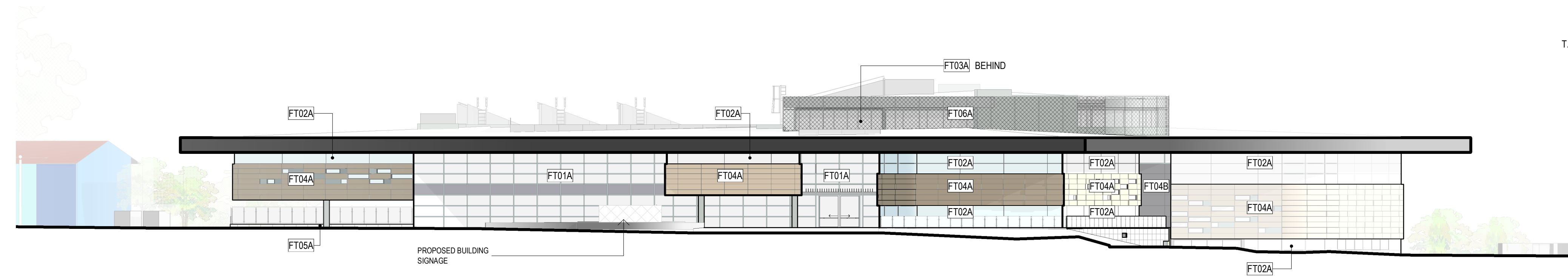
PROJECT NO 220014
DRAWN AM
CHECKED RD
APPROVED BH

TAFE NSW - Meadowbank
Multi-Trades and Digital
Technology Hub

SSDA APPROVAL ISSUE

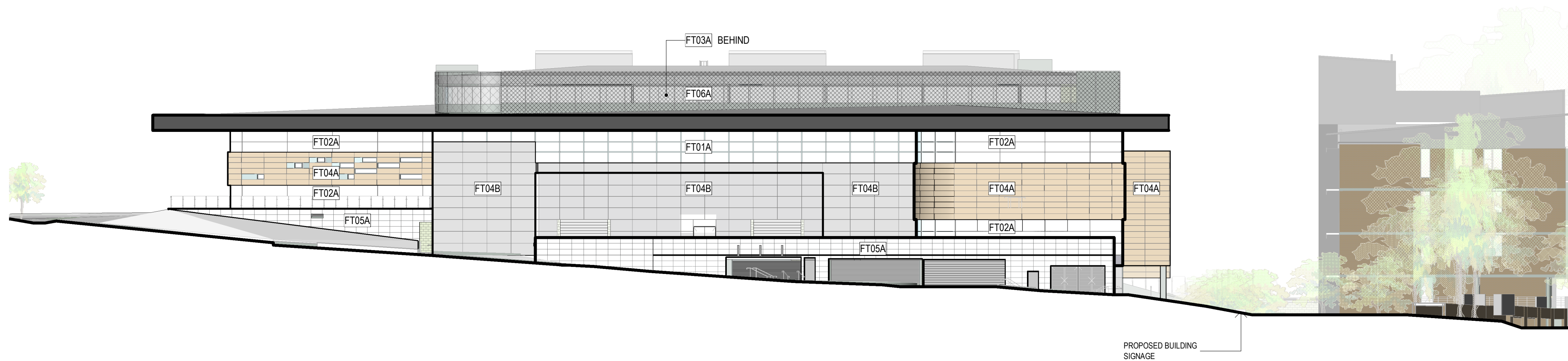
ROOF PLAN

DWG # DA17 REV C
SCALE @ A1 1 : 250



1 EAST ELEVATION
SCALE 1 : 250

T.O. SKYLIGHT	▼
40.800	+/- 500
M-L6	▼
33.070	+/- 500
M-L5	▼
29.270	
M-L4	▼
25.470	
M-L3	▼
21.470	
M-L2	▼
17.670	
M-L1	▼
13.870	



2 NORTH ELEVATION
SCALE 1 : 250

T.O. SKYLIGHT	▼
40.800	+/- 500
M-L6	▼
33.070	+/- 500
M-L5	▼
29.270	
M-L4	▼
25.470	
M-L3	▼
21.470	
M-L2	▼
17.670	
M-L1	▼
13.870	

FACADE TYPE LEGEND

FT01A	-UNITISED PANEL SYSTEM; POWDERCOATED METAL AND GLAZING UNITS
FT02A	-UNITISED PANEL SYSTEM; POWDERCOATED METAL AND STRUCTURALLY BONDED GLAZING
FT03A	-UNITISED SHOPFRONT GLAZING SYSTEM; POWDERCOATED FRAMES
FT04A	-INSULATED RAINSCREEN CLADDING; POWDERCOATED FLATLOCK METAL PANEL SYSTEM
FT04B	-INSULATED RAINSCREEN CLADDING; POWDERCOATED FLATLOCK METAL PANEL SYSTEM DARK FINISH
FT05A	-STONE CLADDING (NATURAL OR RECONSTITUTED)
FT06A	-POWDERCOATED PERFORATED METAL MESH SCREEN

GRAY PUKSAND

DISCLAIMER
This document may not be secure, may be corrupted in transmission or due to software incompatibility and/or may be amended or altered by third parties after leaving Gray Puksand's possession.

Gray Puksand is not responsible for and accepts no liability for such matters. Subject only to any conflicting provision within any prior binding agreement, by Gray Puksand (which agreement may also contain additional conditions relating to this document and its use):

- The content of this document is confidential and copyright in it belongs to Gray Puksand. They are permitted only to be opened, read and used by the addressee.
- All users of this document must carry out all relevant investigations and must examine, take advice as required and satisfy themselves concerning the contents, correctness and sufficiency of the attachment and its contents for their purposes.
- To the extent permitted by law, all conditions and warranties concerning this document or any use to which they may be put (whether as to quality, outcome, fitness, care, skill or otherwise) whether express or implied by statute, common law, equity, trade, custom or usage or otherwise are expressly excluded.
- Any person using or relying on this document releases indemnifies, and will keep indemnified, Gray Puksand against all claims, liabilities, loss, costs and expenses arising directly or indirectly out of or in connection with such use or reliance including without limitation any misrepresentation, error or defect in this document.

Contractors to use Architectural drawings for set out.
Contractors to check & verify all Dimensions on Site prior to Construction/Fabrication. Figured Dimensions take precedence over Scaled Dimensions.
Any Discrepancies should be immediately referred to the Architect.
All work to comply with N.C.C. Statutory Authorities & Relevant Australian Standards.

NSW Nominated Architects Scott Moylan 7147 Craig Saltmarsh 6569

HANSEN YUNCKEN



REV	DESCRIPTION	DATE
A	Issue for SSDA	04-10-2019
B	Issue for SSDA	09-10-2019
C	Issue for SSDA	08-07-2020
D	Issue for SSDA	13-07-2020
E	Issue for SSDA	20-07-2020

PROJECT NO	220014
DRAWN	AM
CHECKED	RD
APPROVED	BH

TAFE NSW - Meadowbank
Multi-Trades and Digital
Technology Hub

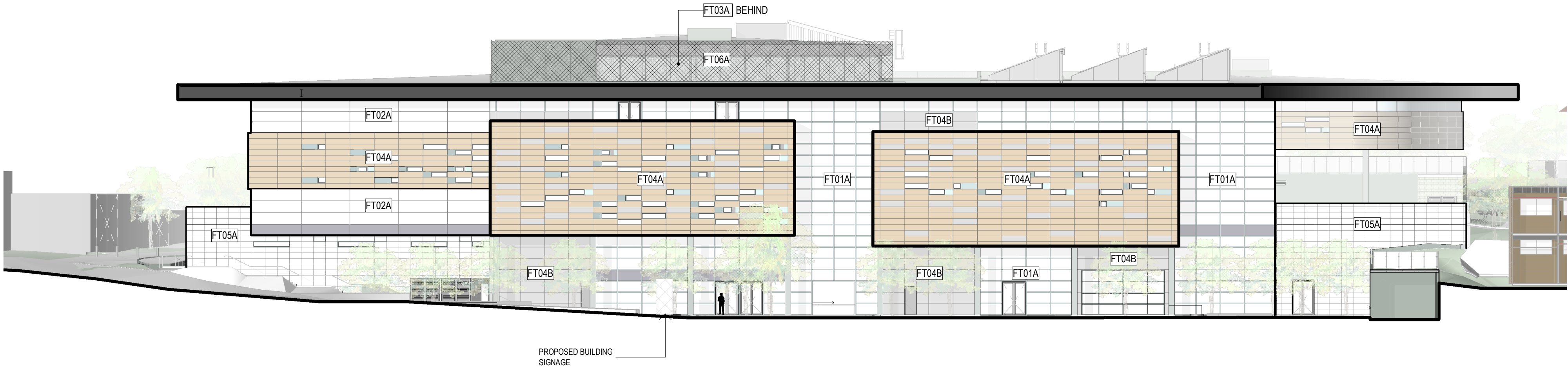
SSDA APPROVAL ISSUE

EAST & NORTH ELEVATIONS

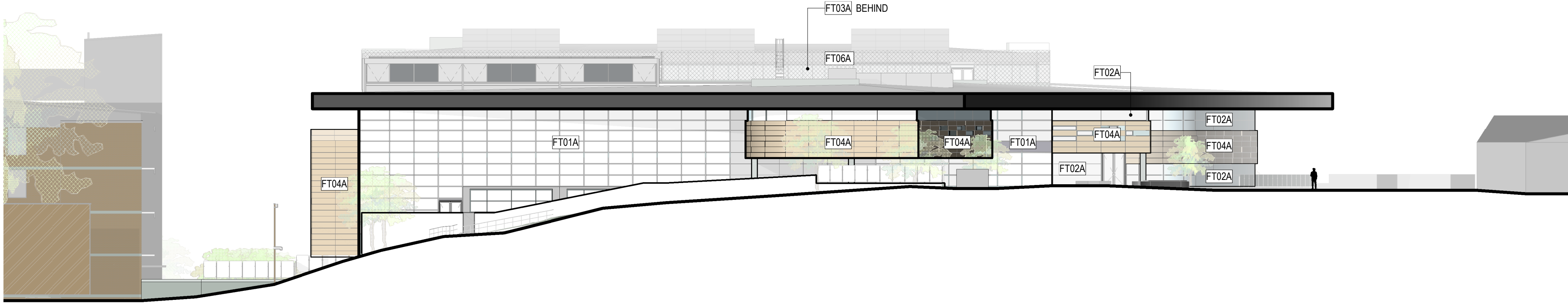
DWG #	DA20	REV	E
SCALE @ A1	As indicated		

Scale 1:250 10M

B:\M_360\SSDA\SSDA130 Meadowbank Education Precinct TAFE\TNM\GP-AR-M.rvt 20/07/2020 2:23:10 PM



1 WEST ELEVATION
SCALE 1:250



2 SOUTH ELEVATION
SCALE 1:250

FACADE TYPE LEGEND

- FT01A -UNITISED PANEL SYSTEM;
POWDERCOATED METAL AND GLAZING UNITS
- FT02A -UNITISED PANEL SYSTEM;
POWDERCOATED METAL AND STRUCTURALLY
BONDED GLAZING
- FT03A -UNITISED SHOPFRONT GLAZING SYSTEM;
POWDERCOATED FRAMES
- FT04A -INSULATED RAINSCREEN CLADDING;
POWDERCOATED FLATLOCK METAL PANEL SYSTEM
- FT04B -INSULATED RAINSCREEN CLADDING;
POWDERCOATED FLATLOCK METAL PANEL SYSTEM
DARK FINISH
- FT05A -STONE CLADDING (NATURAL OR RECONSTITUTED)
- FT06A -POWDERCOATED PERFORATED METAL MESH
SCREEN

GRAY PUKSAND

DISCLAIMER

This document may not be secure, may be corrupted in transmission or due to software incompatibility and/or may be amended or altered by third parties after leaving Gray Puksand's possession.

Gray Puksand is not responsible for and accepts no liability for such matters. Subject only to any conflicting provision within any prior binding agreement, by Gray Puksand (which agreement may also contain additional conditions relating to this document and its use):

- The content of this document is confidential and copyright in it belongs to Gray Puksand. They are permitted only to be opened, read and used by the addressee.
- All users of this document must carry out all relevant investigations and must examine, take advice as required and satisfy themselves concerning the contents, correctness and sufficiency of the attachment and its contents for their purposes.
- To the extent permitted by law, all conditions and warranties concerning this document or any use to which they may be put (whether as to quality, outcome, fitness, care, skill or otherwise) whether express or implied by statute, common law, equity, trade, custom or usage or otherwise are expressly excluded.
- Any person using or relying on this document releases indemnifies, and will keep indemnified, Gray Puksand against all claims, liabilities, loss, costs and expenses arising directly or indirectly out of or in connection with such use or reliance including without limitation any misrepresentation, error or defect in this document.

Contractors to use Architectural drawings for set out.
Contractors to check & verify all Dimensions on Site prior to Construction/Fabrication. Figured Dimensions take precedence over Scaled Dimensions.
Any Discrepancies should be immediately referred to the Architect.
All work to comply with N.C.C. Statutory Authorities & Relevant Australian Standards.

NSW Nominated Architects Scott Moylan 7147 Craig Saltmarsh 6569



REV	DESCRIPTION	DATE
A	Issue for SSDA	04-10-2019
B	Issue for SSDA	09-10-2019
C	Issue for SSDA	08-07-2020
D	Issue for SSDA	13-07-2020
E	Issue for SSDA	20-07-2020

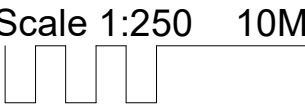
PROJECT NO	220014
DRAWN	AM
CHECKED	RD
APPROVED	BH

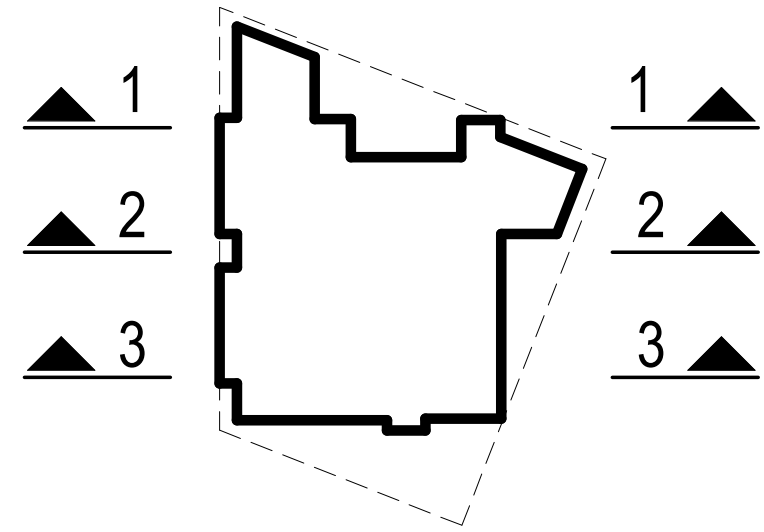
TAFE NSW - Meadowbank
Multi-Trades and Digital
Technology Hub

SSDA APPROVAL ISSUE

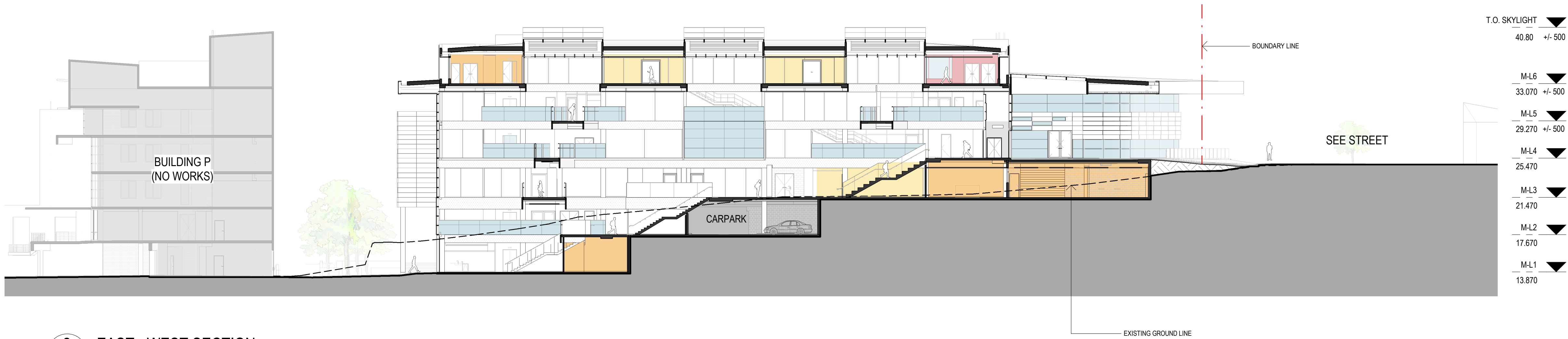
WEST & SOUTH ELEVATIONS

DWG #	DA21	REV	E
SCALE @ A1	As indicated		

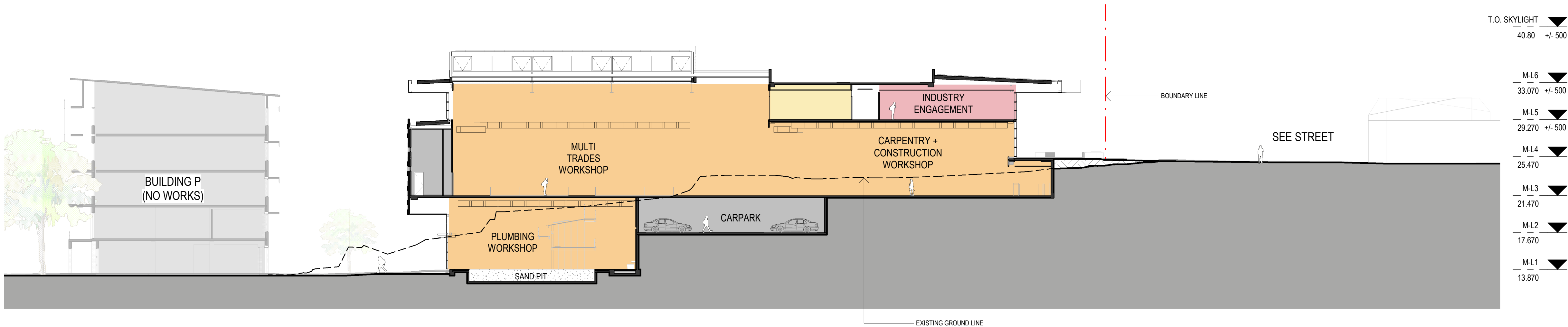




1 EAST - WEST SECTION
SCALE 1 : 250



2 EAST - WEST SECTION
SCALE 1 : 250



3 EAST - WEST SECTION
M7001 SCALE 1 : 250

GRAY PUKSAND

DISCLAIMER
This document may not be secure, may be corrupted in transmission or due to software incompatibility and/or may be amended or altered by third parties after leaving Gray Puksand's possession.
Gray Puksand is not responsible for and accepts no liability for such matters. Subject only to any conflicting provision within any prior binding agreement, by Gray Puksand (which agreement may also contain additional conditions relating to this document and its use):
1. The content of this document is confidential and copyright in it belongs to Gray Puksand. They are permitted only to be opened, read and used by the addressee.
2. All users of this document must carry out all relevant investigations and must examine, take advice as required and satisfy themselves concerning the contents, correctness and sufficiency of the attachment and its contents for their purposes.
3. To the extent permitted by law, all conditions and warranties concerning this document or any use to which they may be put (whether as to quality, outcome, fitness, care, skill or otherwise) whether express or implied by statute, common law, equity, trade, custom or usage or otherwise are expressly excluded.
4. Any person using or relying on this document releases indemnifies, and will keep indemnified, Gray Puksand against all claims, liabilities, loss, costs and expenses arising directly or indirectly out of or in connection with such use or reliance including without limitation any misrepresentation, error or defect in this document.
Contractors to use Architectural drawings for set out.
Contractors to check & verify all Dimensions on Site prior to Construction/Fabrication. Figured Dimensions take precedence over Scaled Dimensions.
Any Discrepancies should be immediately referred to the Architect.
All work to comply with N.C.C. Statutory Authorities & Relevant Australian Standards.
NSW Nominated Architects Scott Moylan 7147 Craig Saltmarsh 6569

HANSEN YUNCKEN



REV	DESCRIPTION	DATE
A	Issue for SSDA	04-10-2019
B	Issue for SSDA	09-10-2019
C	Issue for SSDA	30-04-2020
D	Issue for SSDA	08-07-2020
E	Issue for SSDA	13-07-2020

PROJECT NO	220014
DRAWN	RD
CHECKED	RD
APPROVED	BH

TAFE NSW - Meadowbank
Multi-Trades and Digital
Technology Hub

SSDA APPROVAL ISSUE

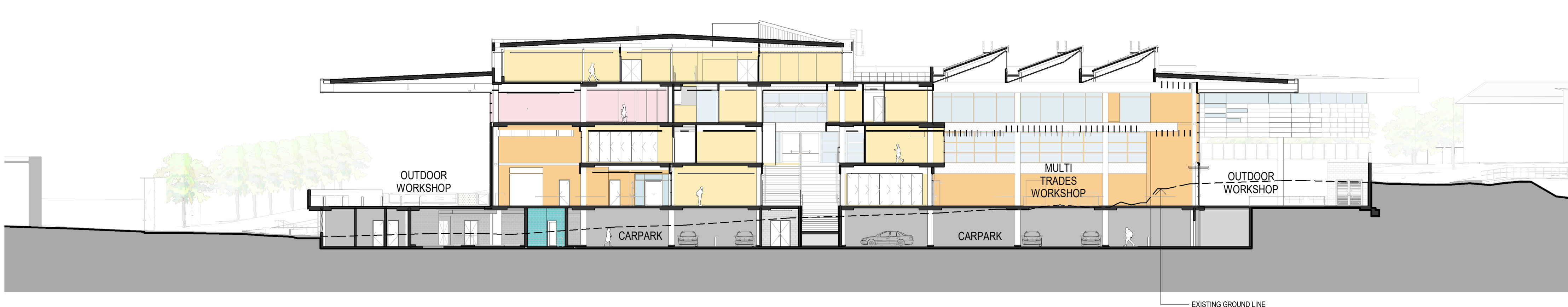
SECTIONS - EAST-WEST

DWG #	DA25	REV	E
SCALE @ A1	As indicated		

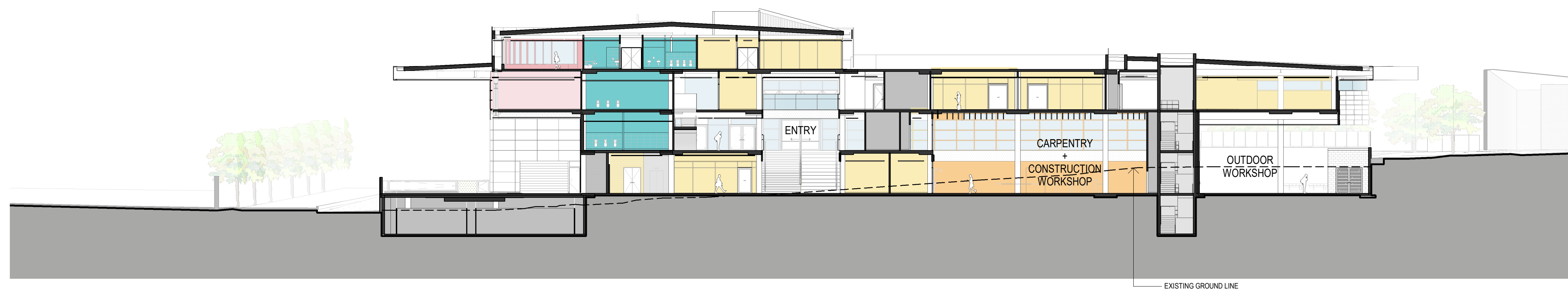
Scale 1:250 10M



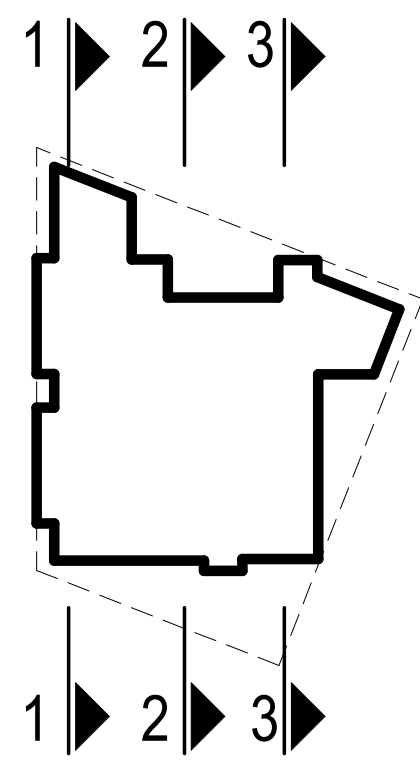
1 SOUTH - NORTH SECTION
SCALE 1 : 250



2 SOUTH - NORTH SECTION
SCALE 1 : 250



3 SOUTH - NORTH SECTION
SCALE 1 : 250



- AMENITIES
- APPLIED RESEARCH
- CARPARK
- CARPARK SERVICES
- CIRCULATION
- INDUSTRY ENGAGEMENT
- LEARNING SPACES
- SERVICES
- STORE
- WORKSHOP
- WORKSPACE

GRAY PUKSAND

DISCLAIMER

This document may not be secure, may be corrupted in transmission or due to software incompatibility and/or may be amended or altered by third parties after leaving Gray Puksand's possession.

Gray Puksand is not responsible for and accepts no liability for such matters. Subject only to any conflicting provision within any prior binding agreement, by Gray Puksand (which agreement may also contain additional conditions relating to this document and its use):

- The content of this document is confidential and copyright in it belongs to Gray Puksand. They are permitted only to be opened, read and used by the addressee.
- All users of this document must carry out all relevant investigations and must examine, take advice as required and satisfy themselves concerning the contents, correctness and sufficiency of the attachment and its contents for their purposes.
- To the extent permitted by law, all conditions and warranties concerning this document or any use to which they may be put (whether as to quality, outcome, fitness, care, skill or otherwise) whether express or implied by statute, common law, equity, trade, custom or usage or otherwise are expressly excluded.
- Any person using or relying on this document releases indemnifies, and will keep indemnified, Gray Puksand against all claims, liabilities, loss, costs and expenses arising directly or indirectly out of or in connection with such use or reliance including without limitation any misrepresentation, error or defect in this document.

Contractors to use Architectural drawings for set out.
Contractors to check & verify all Dimensions on Site prior to Construction/Fabrication. Figured Dimensions take precedence over Scaled Dimensions.
Any Discrepancies should be immediately referred to the Architect.
All work to comply with N.C.C. Statutory Authorities & Relevant Australian Standards.

NSW Nominated Architects Scott Moylan 7147 Craig Saltmarsh 6569



REV	DESCRIPTION	DATE
A	Issue for SSDA	04-10-2019
B	Issue for SSDA	09-10-2019
C	Issue for SSDA	30-04-2020
D	Issue for SSDA	08-07-2020
E	Issue for SSDA	13-07-2020

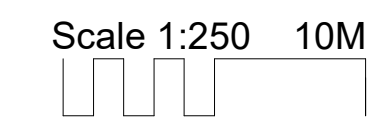
PROJECT NO	220014
DRAWN	RD
CHECKED	RD
APPROVED	BH

TAFE NSW - Meadowbank
Multi-Trades and Digital
Technology Hub

SSDA APPROVAL ISSUE

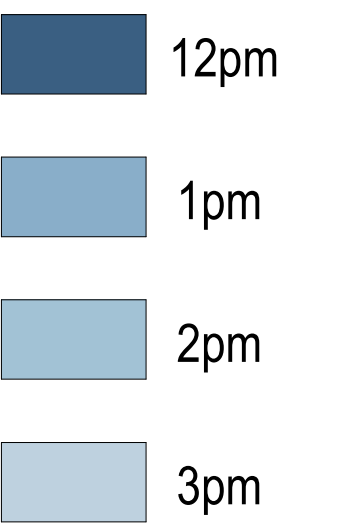
SECTIONS - SOUTH-NORTH

DWG #	DA26	REV	E
SCALE @ A1	As indicated		





LEGEND



GRAY PUKSAND

DISCLAIMER

This document may not be secure, may be corrupted in transmission or due to software incompatibility and/or may be amended or altered by third parties after leaving Gray Puksand's possession

Gray Puksand is not responsible for and accepts no liability for such matters. Subject only to any conflicting provision within any prior binding agreement by Gray Puksand (which agreement may also contain additional conditions relating to this document and its use):

1. The content of this document is confidential and copyright in it belongs to Gary Putsand. They are permitted only to be opened, read and used by the addressee.
2. All users of this document must carry out all relevant investigations and must examine, take advice as required and satisfy themselves concerning the contents, correctness and sufficiency of the attachment and its contents for their purposes.
3. To the extent permitted by law, all conditions and warranties concerning this document or any use to which they may be put (whether as to quality, outcome, fitness, care, skill or otherwise) whether express or implied by statute, common law, equity, trade, custom or usage or otherwise are expressly excluded.
4. Any person using or relying on document releases indemnifies, and will keep indemnified, Gary Putsand and his agents, employees, contractors and expenses arising directly or indirectly out of or in connection with such use or reliance without limitation any misrepresentation, error or defect in this document.

Contractors to use Architectural drawings for set out.
Contractors to check & verify all Dimensions on Site prior to Construction/Fabrication.
Figured Dimensions take precedence over Scaled Dimensions.
Any Discrepancies should be immediately referred to the Architect.
All work to comply with N.C.C. Statutory Authorities & Relevant Australian Standards.

NSW Nominated Architects Scott Moylan 7147 Craig Saltmarsh 6569

HANSEN YUNCKEN



REV	DESCRIPTION	DATE
A	Issue for SSDA	04-10-2019
B	Issue for SSDA	09-10-2019
C	Issue for SSDA	08-07-2020

PROJECT NO	220014
DRAWN	RD
CHECKED	RD
APPROVED	BH

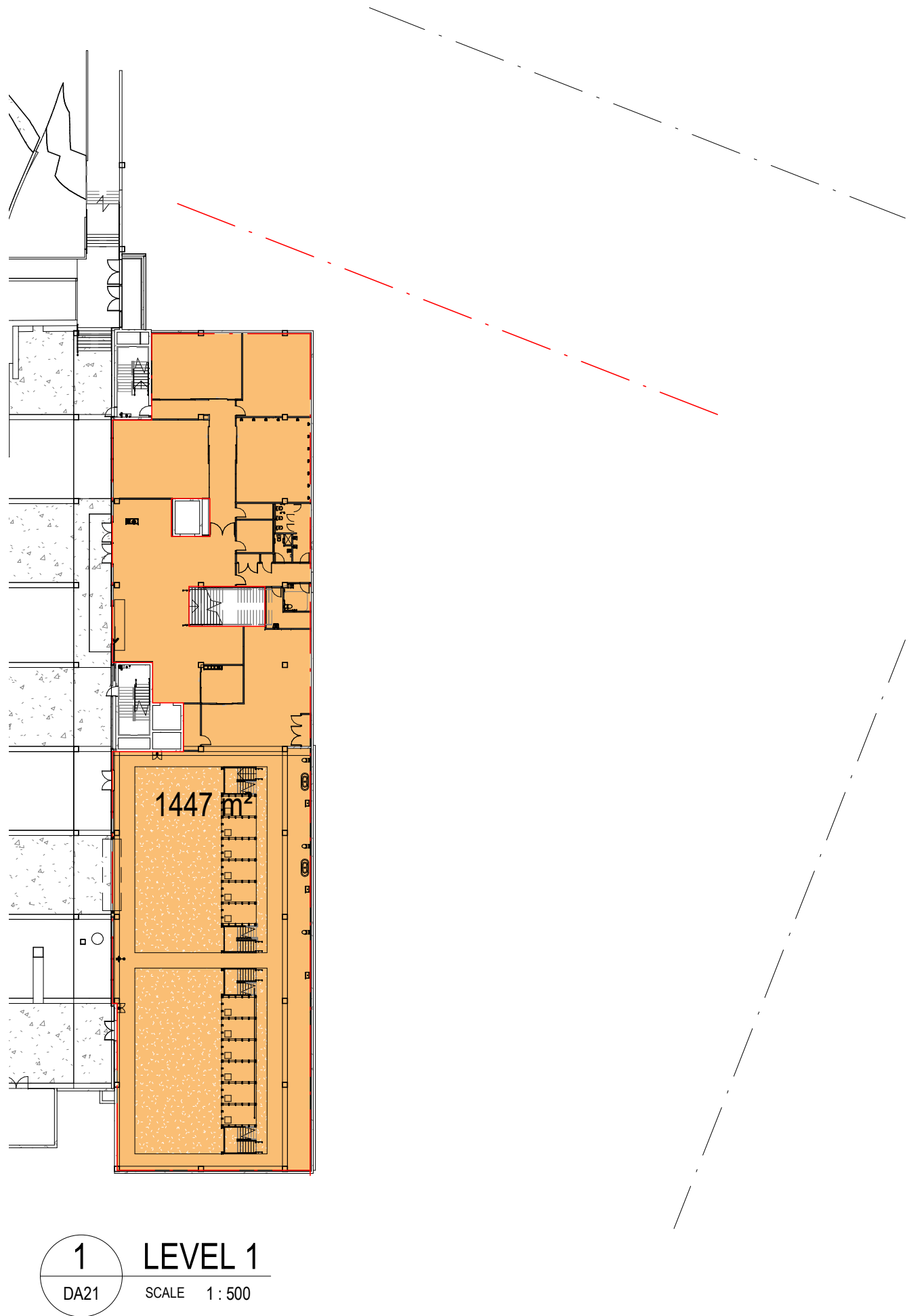
TAFE NSW - Meadowbank
Multi-Trades and Digital
Technology Hub

SSDA APPROVAL ISSUE

WINTER SHADOW DIAGRAM IMPACT STUDY SHADOWS

DWG # **DA37** REV **C**

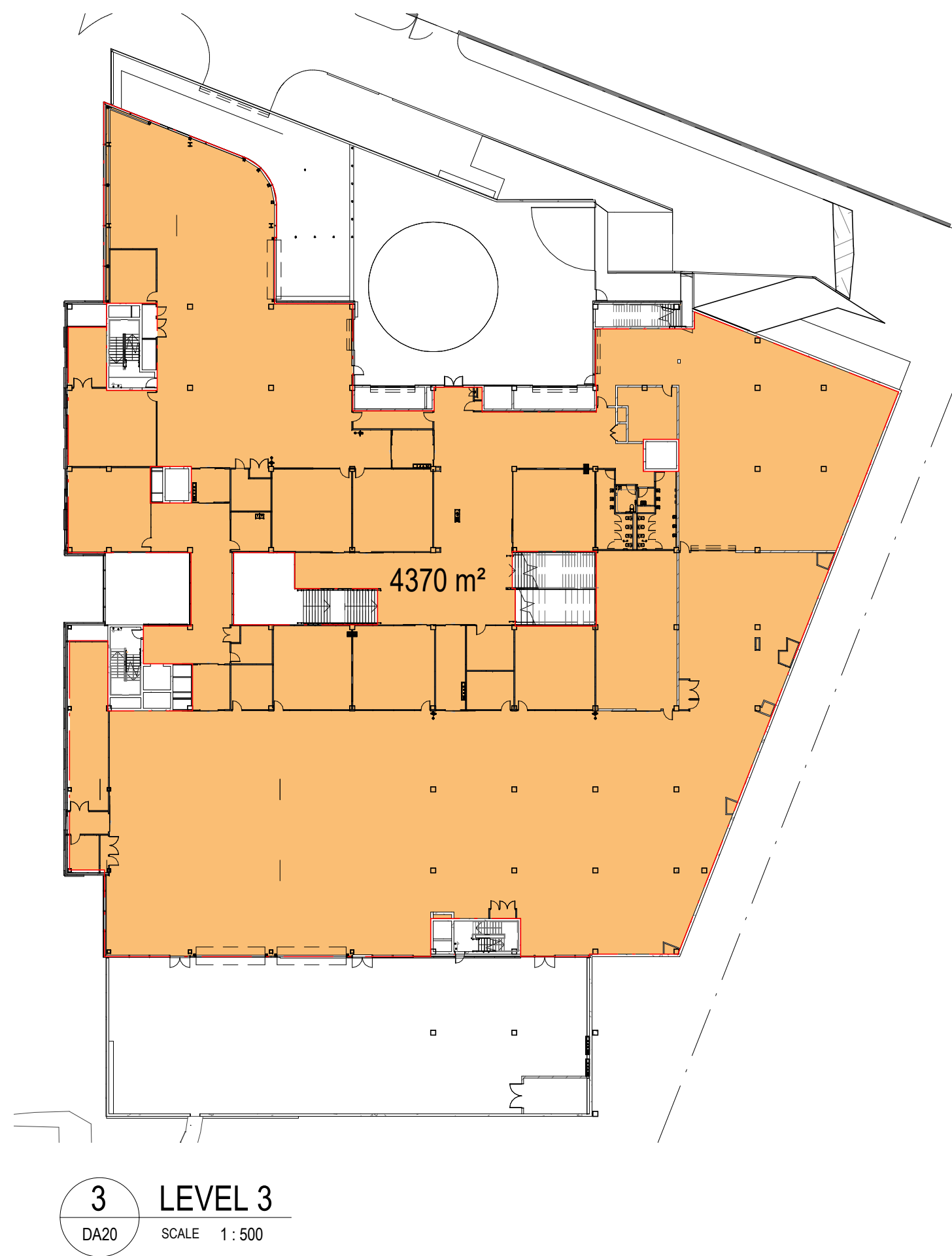
SCALE @ A1 As indicated



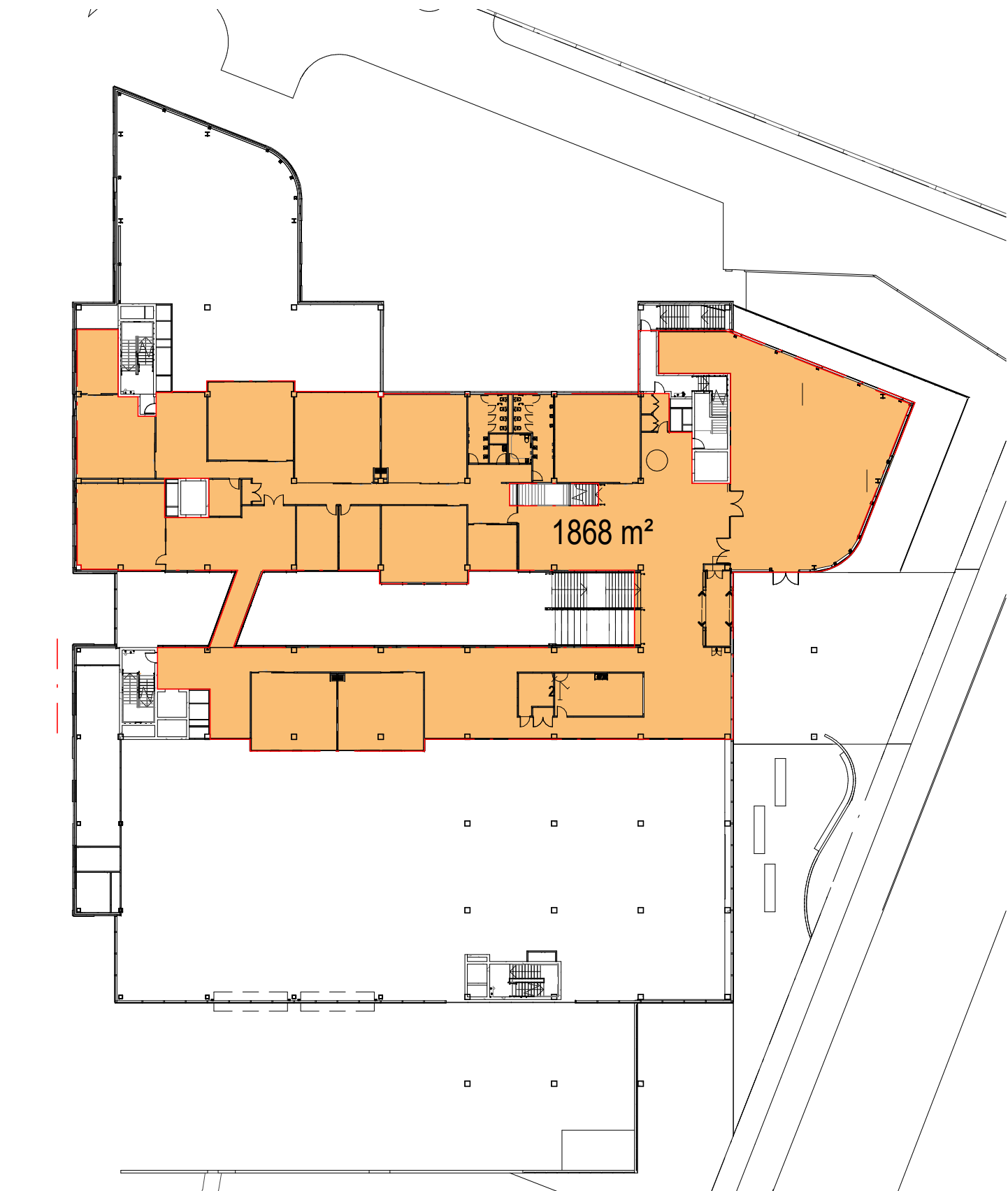
1 LEVEL 1
DA21 SCALE 1:500



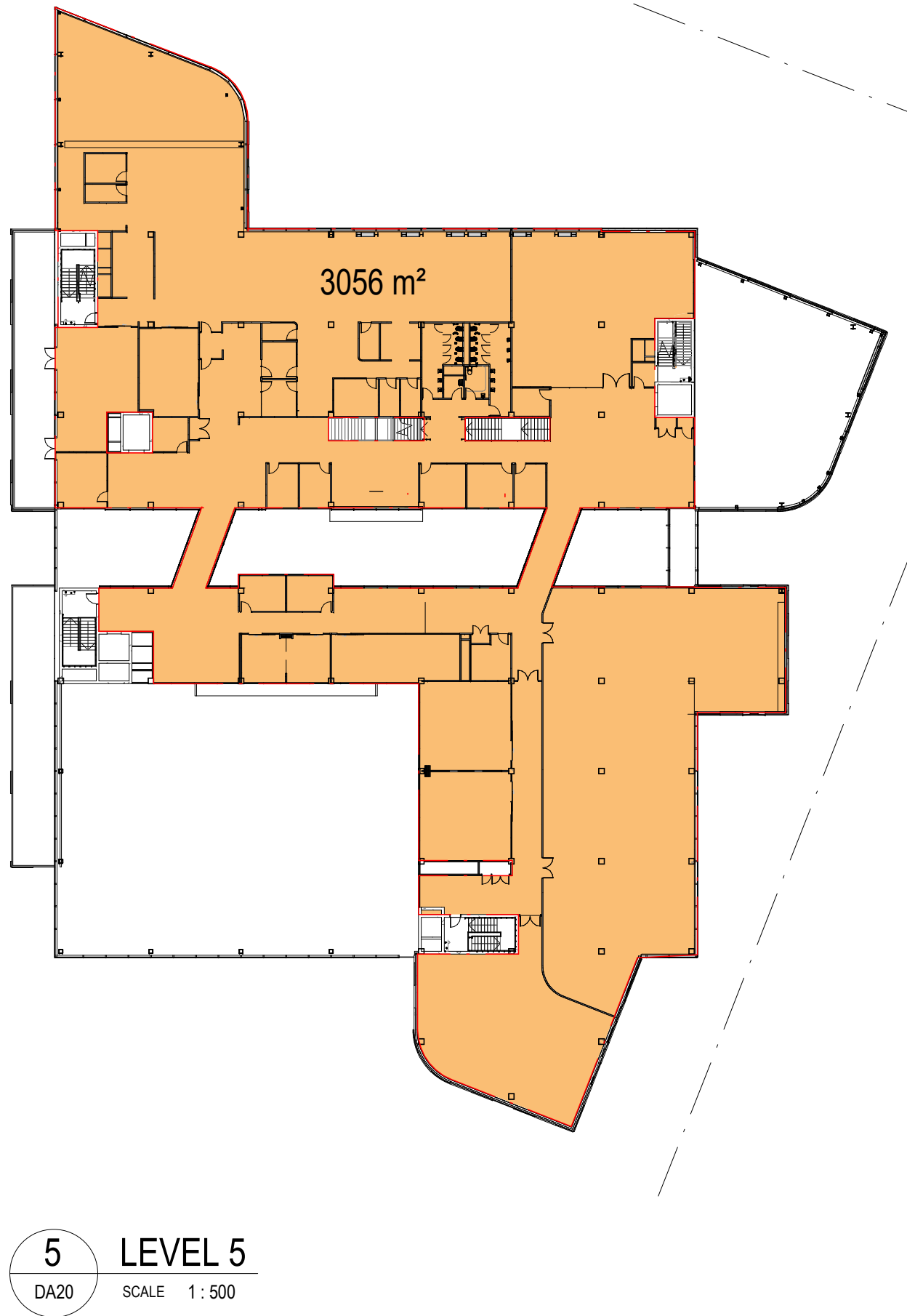
2 LEVEL 2
DA20 SCALE 1:500



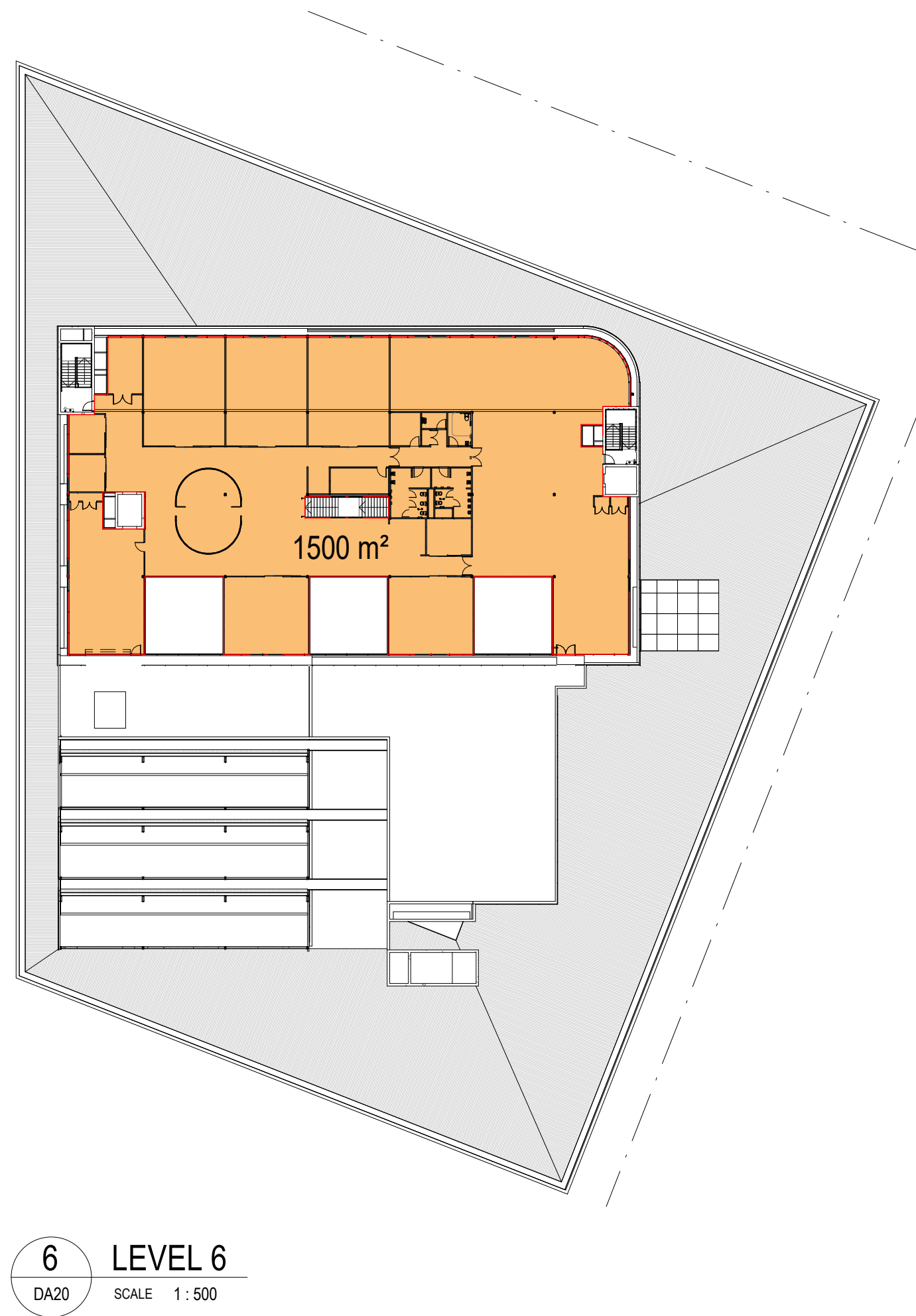
3 LEVEL 3
DA20 SCALE 1:500



4 LEVEL 4
A-M0203 SCALE 1:500



5 LEVEL 5
DA20 SCALE 1:500



6 LEVEL 6
DA20 SCALE 1:500

GFA AREAS SCHEDULE	
LEVEL	AREA
M-L1	1446.9 m²
M-L2	835.6 m²
M-L3	4369.6 m²
M-L4	1868.3 m²
M-L5	3056.0 m²
M-L6	1500.5 m²
Grand total: 6	13076.9 m²

GFA DEFINITION - EXTRACTED FROM RYDE LEP 2014

GROSS FLOOR AREA MEANS THE SUM OF THE FLOOR AREA OF EACH FLOOR OF A BUILDING MEASURED FROM THE INTERNAL FACE OF EXTERNAL WALLS, OR FROM THE INTERNAL FACE OF WALLS SEPARATING THE BUILDING FROM ANY OTHER BUILDING, MEASURED AT A HEIGHT OF 1.4 METRES ABOVE THE FLOOR, AND INCLUDES:

- (a) THE AREA OF A MEZZANINE, AND
- (b) HABITABLE ROOMS IN A BASEMENT OR AN ATTIC, AND
- (c) ANY SHOP, AUDITORIUM, CINEMA, AND THE LIKE, IN A BASEMENT OR ATTIC,

BUT EXCLUDES:

- (d) ANY AREA FOR COMMON VERTICAL CIRCULATION, SUCH AS LIFTS AND STAIRS, AND

- (e) ANY BASEMENT:
 - (i) STORAGE, AND
 - (ii) VEHICULAR ACCESS, LOADING AREAS, GARBAGE AND SERVICES, AND

- (f) PLANT ROOMS, LIFT TOWERS AND OTHER AREAS USED EXCLUSIVELY FOR MECHANICAL SERVICES OR DUCTING, AND

- (g) CAR PARKING TO MEET ANY REQUIREMENTS OF THE CONSENT AUTHORITY (INCLUDING ACCESS TO THAT CAR PARKING), AND

- (h) ANY SPACE USED FOR THE LOADING OR UNLOADING OF GOODS (INCLUDING ACCESS TO IT), AND

- (i) TERRACES AND BALCONIES WITH OUTER WALLS LESS THAN 1.4 METRES HIGH, AND
- (ii) VOIDS ABOVE A FLOOR AT THE LEVEL OF A STOREY OR STOREY ABOVE.

GRAY PUKSAND

DISCLAIMER
This document may not be secure, may be corrupted in transmission or due to software incompatibility and/or may be amended or altered by third parties after leaving Gray Puksand's possession.
Gray Puksand is not responsible for and accepts no liability for such matters. Subject only to any conflicting provision within any prior binding agreement, by Gray Puksand (which agreement may also contain additional conditions relating to this document and its use):
1. The content of this document is confidential and copyright in it belongs to Gray Puksand. They are permitted only to be opened, read and used by the addressee.
2. All users of this document must carry out all relevant investigations and must examine, take advice as required and satisfy themselves concerning the contents, correctness and sufficiency of the attachment and its contents for their purposes.
3. To the extent permitted by law, all conditions and warranties concerning this document or any use to which they may be put (whether as to quality, outcome, fitness, care, skill or otherwise) whether express or implied by statute, common law, equity, trade, custom or usage or otherwise are expressly excluded.
4. Any person using or relying on document releases indemnifies, and will keep indemnified, Gray Puksand against all claims, liabilities, loss, costs and expenses arising directly or indirectly out of or in connection with such use or reliance including without limitation any misrepresentation, error or defect in this document.
Contractors to use Architectural drawings for set out.
Contractors to check & verify all Dimensions on Site prior to Construction/Fabrication. Figured Dimensions take precedence over Scaled Dimensions.
Any Discrepancies should be immediately referred to the Architect.
All work to comply with N.C.C. Statutory Authorities & Relevant Australian Standards.
NSW Nominated Architects Scott Moylan 7147 Craig Saltmarsh 6569

HANSEN YUNCKEN



REV	DESCRIPTION	DATE
A	Issue for SSDA	04-10-2019
B	Issue for SSDA	09-10-2019
C	Issue for SSDA	08-07-2020

PROJECT NO	220014
DRAWN	TA
CHECKED	RD
APPROVED	BH

TAFE NSW - Meadowbank Multi-Trades and Digital Technology Hub

SSDA APPROVAL ISSUE

GFA PLANS

DWG #	DA50	REV	C
SCALE @ A1	As indicated		