



Yiribana Logistics Estate
Landscape SSDA_Estate Masterplan
June 2022



SITE IMAGE
Landscape Architects



The GPT Group

Contents Page

Introduction

Landscape Concept Masterplan

Landscape Stage 1 Masterplan

Tree Canopy Coverage

Landscape Typologies

Streetscape Frontage

Streetscape Frontage Planting

Mamre Road Frontage

Mamre Road Frontage Planting

Boundary

Boundary Planting

Bio Basin

Bio Basin Planting

Riparian Zone

Riparian Zone Planting

Introduction

The Landscape Masterplan follows the ethos of the **Greener Places** framework developed by GANSW and incorporates the requirements and vision outlined in the **Mamre Road Precinct DCP**. The Landscape Masterplan aims to deliver a robust, sustainable and enduring landscape reposnding to its setting and the proposed built forms.

The design incrobrates the following principles to achieve the above outcomes:

- Soften the built form and ameliorate the views through the use of canopy trees and large shrubs
- Utilise native and endemic species to help reestablish fragmented bushland and increase ecology and biodiveristy throughout the site
- Create legibility and heirachy across the lots through varied landscape typologies
- Increase tree canopy coverage
- Creating an attractive landscape setting for workers and visitors of the site

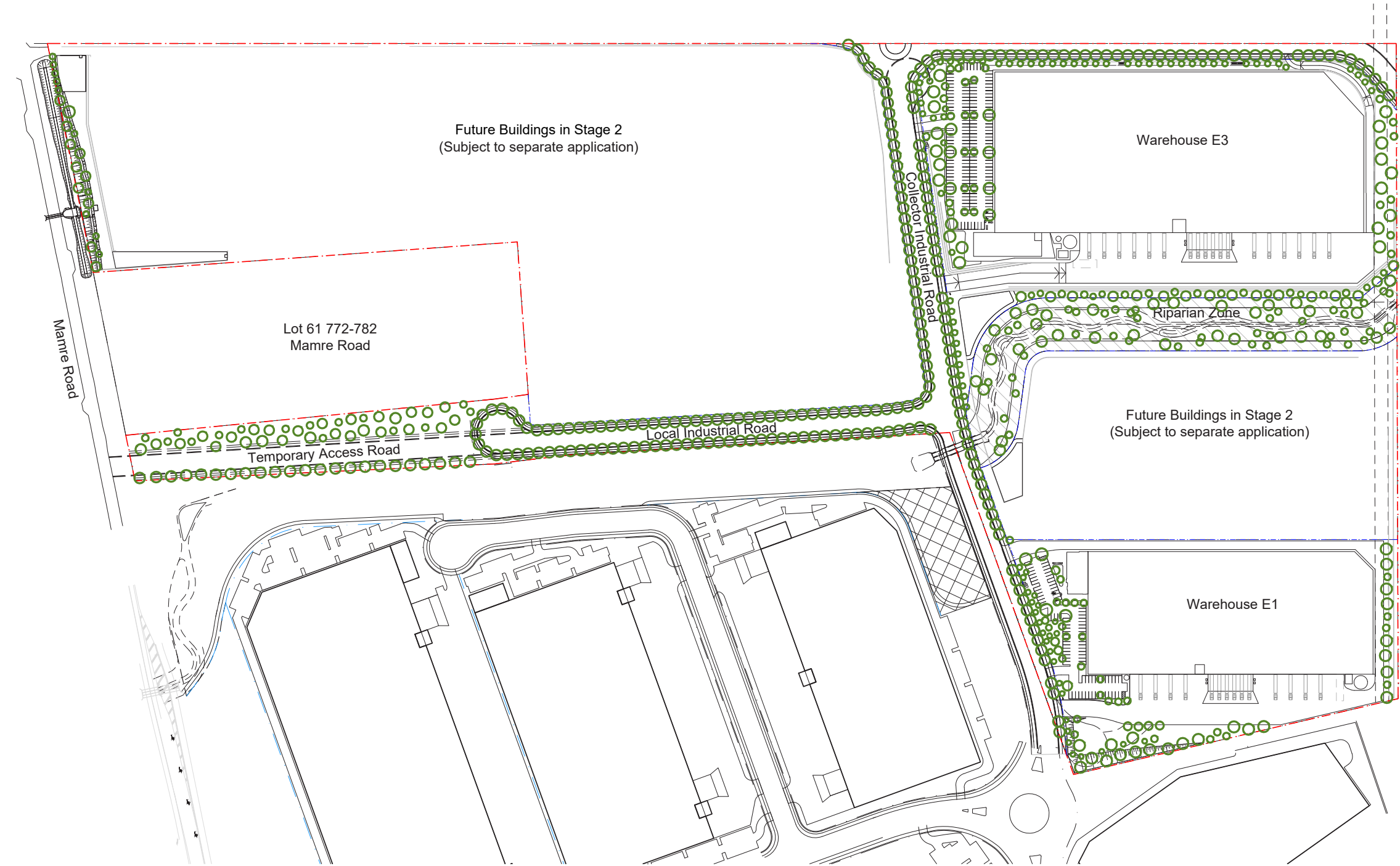


Masterplan
Landscape Concept Masterplan



Masterplan

Tree Canopy Coverage



Landscape Strategy

Trees are proposed thought landscaped areas. Generous tree canopy along streetscapes, carparks and amenity areas will provide amenity cooling and shade. As noted in the Bush Fire Assesment Report by Bushfire Consulting Services the full site is required to be managed as an Inner Protection Zone this has driven the planting design to fuful the following key requirements

- Tree canopy cover should be less than 15% at maturity;
- Tree canopies should be separated by 2 to 5m;
- Shrubs should not be located under trees

Site Area	331433 m2
Canopy Area	23,448sqm
Canopy Coverage	7 %

Masterplan /
Landscape Typologies



- Legend
- Boundary Planting
 - Bio Basin
 - Riparian Zone
 - Streetscape
 - Collector Road
 - Local Road
 - Mamre Road Frontage
 - GPT Estate Boundary
 - Lot Boundaries

Masterplan / Streetscape



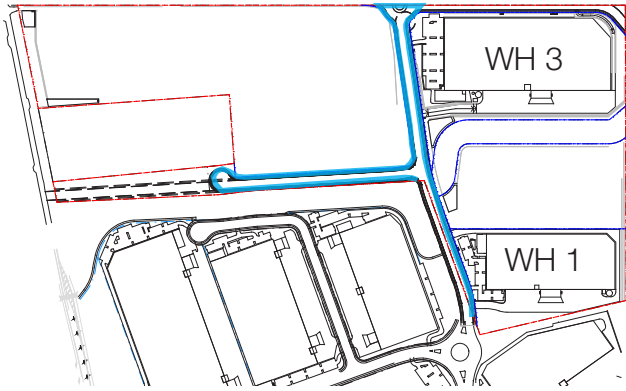
Character imagery



Low maintenance ground covers and grasses to understory



Large canopy trees evenly spaced along entirety of street

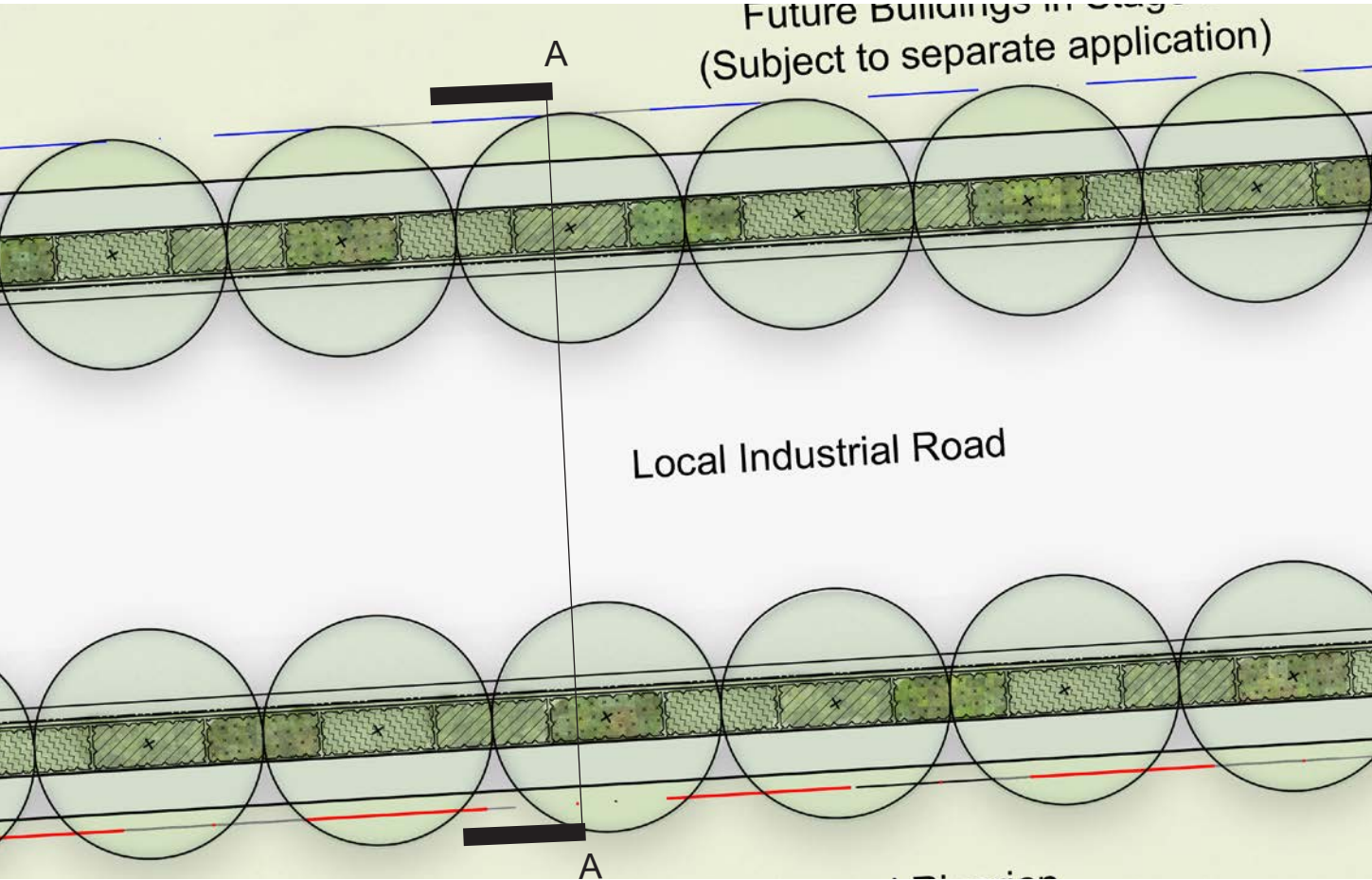


Landscape Strategy

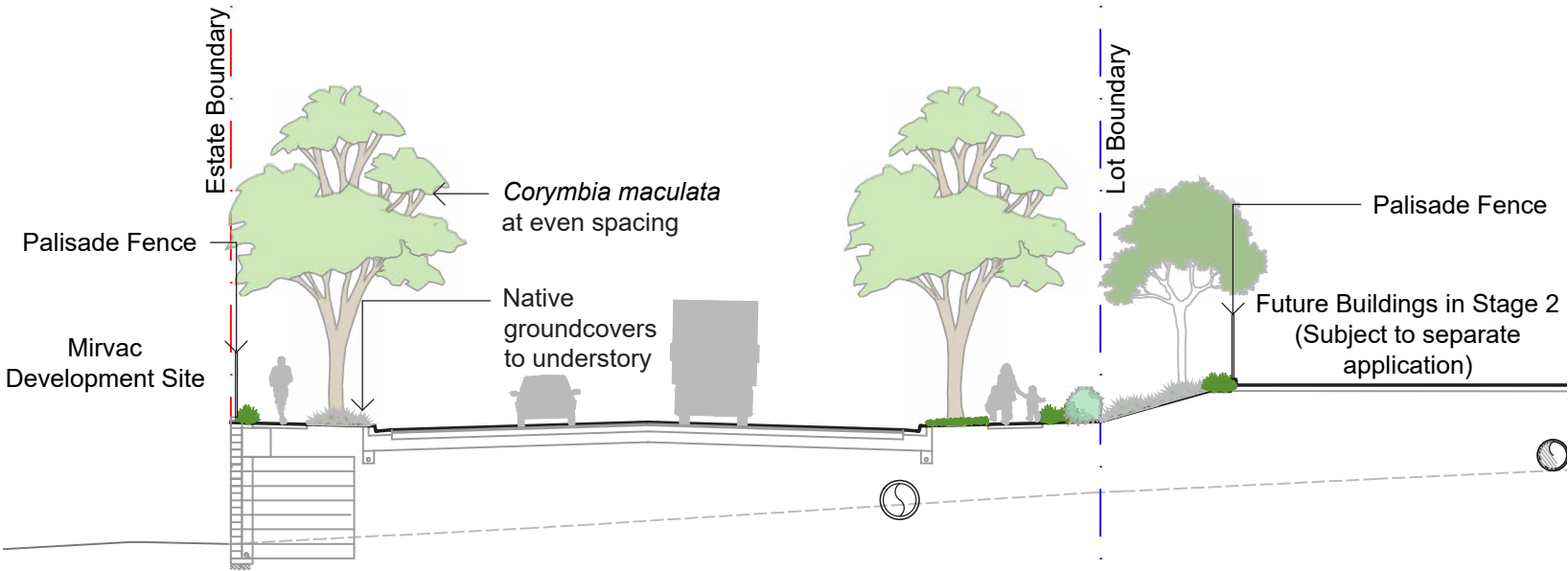
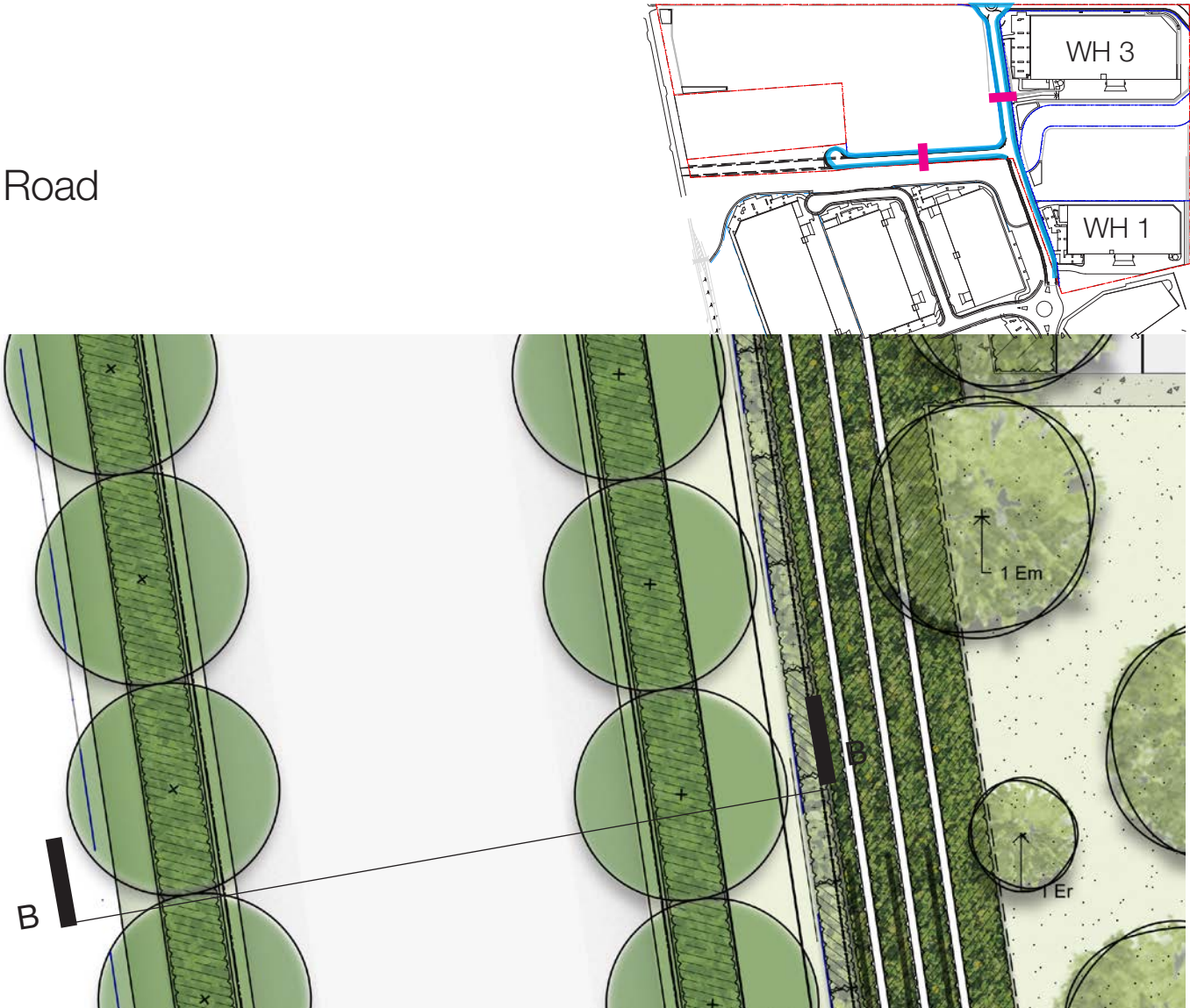
The Streetscape landscape treatment is the main presentational frontage of lots to the access roads. Roads are to feature street tree planting to both sides as well as groundcovers. The frontage will consist of a variety of native shrubs, groundcovers, and canopy trees. Security fencing is to be positioned amongst the landscape to recede into the planting.

Masterplan / Streetscape

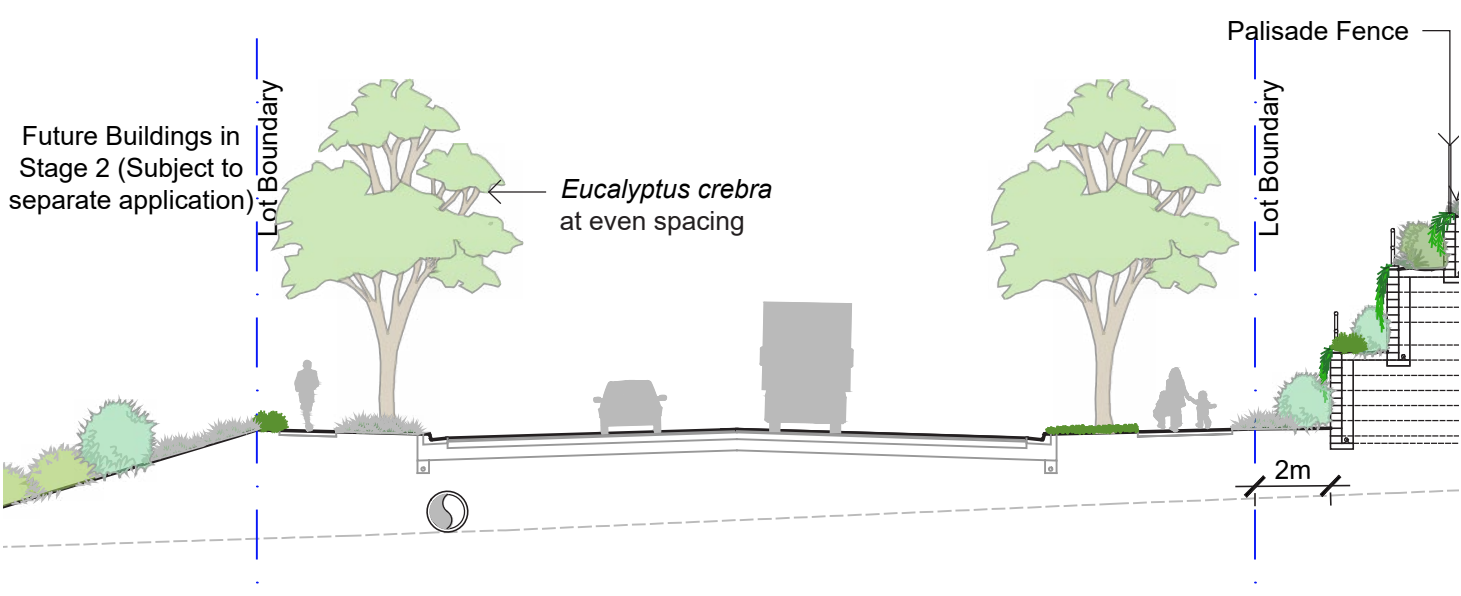
Local Road



Collector Road



Section A | Typical Streetscape Cross Section
Scale 1:200



Section B | Typical Streetscape Cross Section
Scale 1:200

Masterplan / Streetscape Planting

Indicative Species



Corymbia maculata



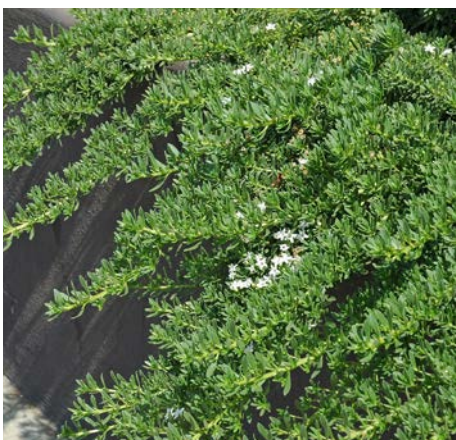
Eucalyptus crebra



Themeda australis



Gazania tomentosa



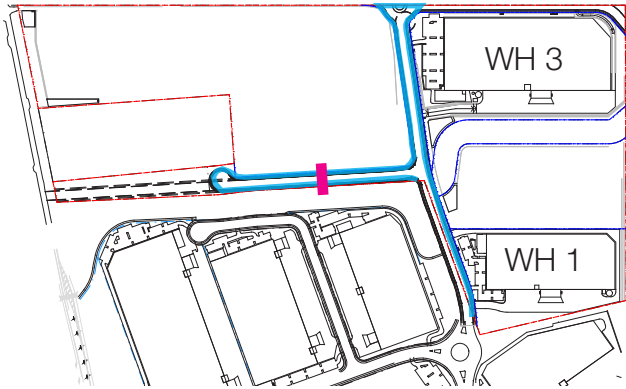
Myoporum parvifolium



Lomandra longifolia

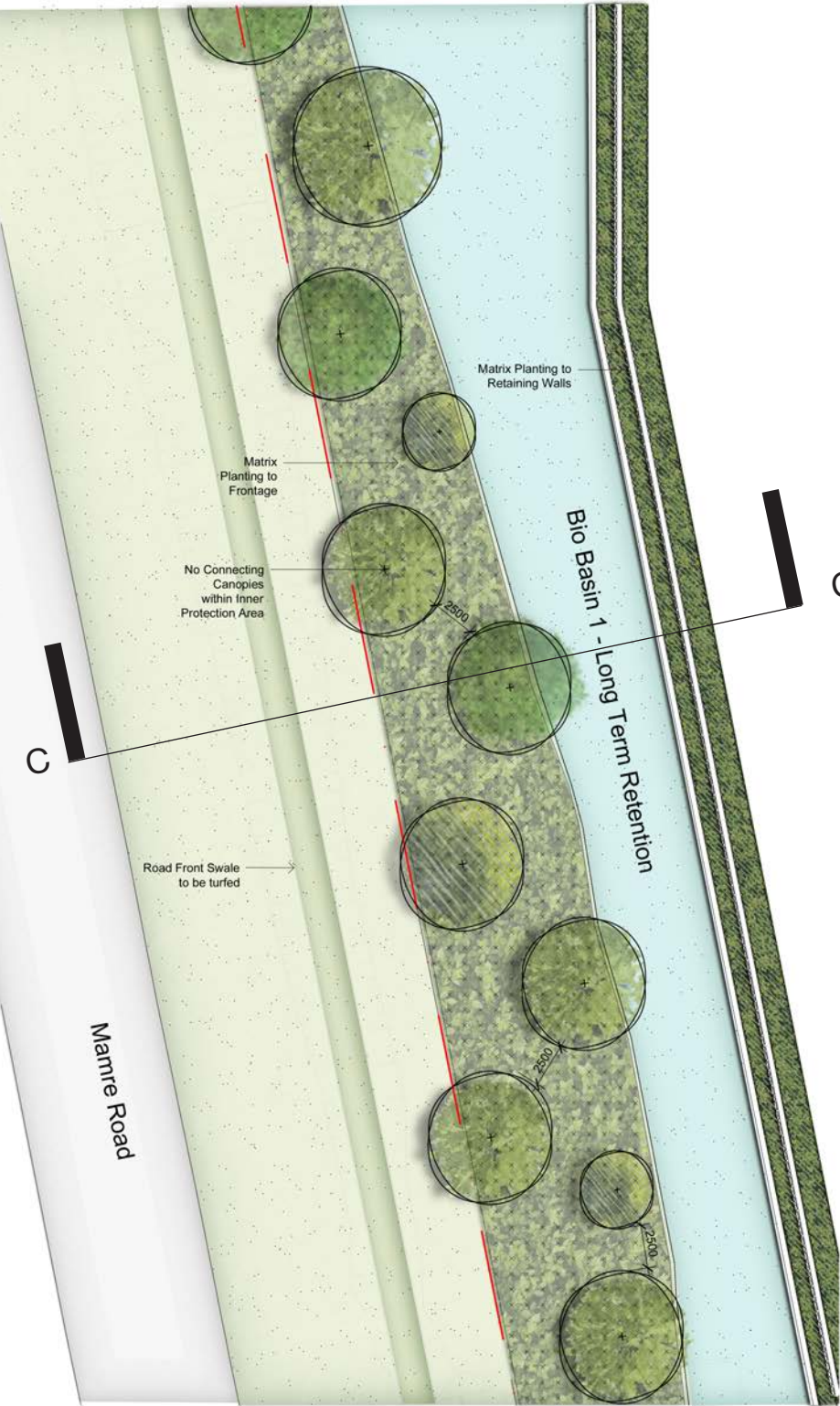


Dianella caerulea



Streetscape					
Code	Botanic Name	Common Name	Mature Size (h x w) (m)	Pot Size	Density
TREES					
Cm	Corymbia maculata	Spotted Gum	30 x 8	100L	As Shown
Ec	Eucalyptus crebra	Narrow Leaved Iron Bark	35	100L	As Shown
GRASSES AND GROUNDCOVERS					
Ta	Themeda australis	Kangaroo Grass	1 x .5	150mm	5/m²
Gt	Gazania tomentosa	Silver Gazania	.15 x 1	150mm	5/m²
Mp	Myoporum parvifolium	Creeping Boobialla	.3 x 2	150mm	5/m²
Li	Lomandra longifolia	Mat Rush	1 x 1	150mm	5/m²
Dc	Dianella caerulea	Flax Lily	0.8x 0.5	150mm	5/m²

Masterplan / Mamre Road Frontage



Character imagery



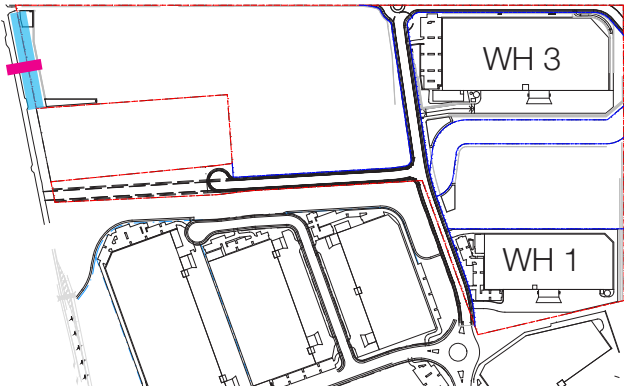
Mix of large canopy trees & medium trees



Mounding to further soften visual impact of retaining walls



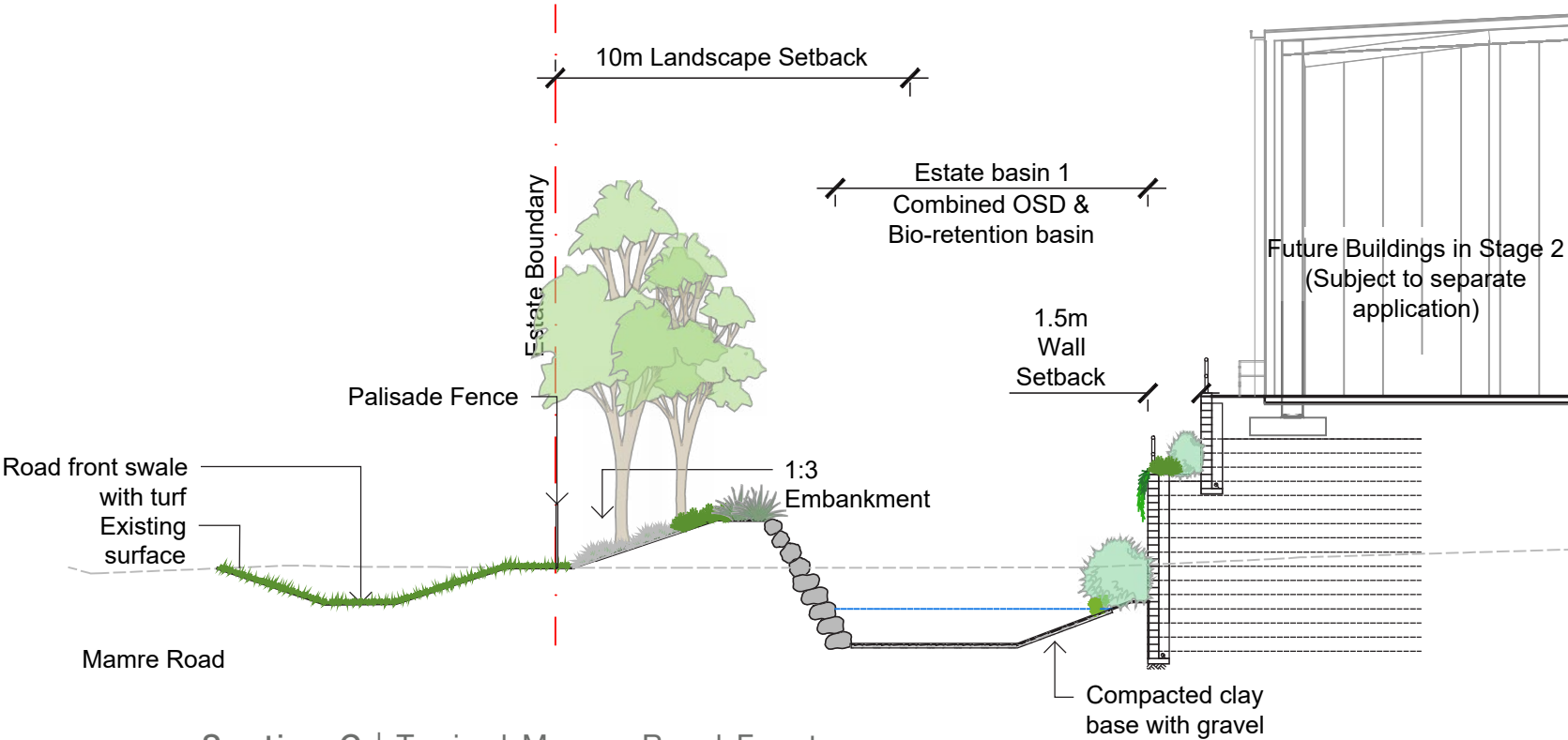
Native understory planting



Landscape Strategy

Embankments facing Mamre Rd will have planting of shrubs, grasses, groundcovers and large canopy trees.

A long term retention basin will have gravel to the base with shrub planting above the water line to screen the adjacent retaining wall.



Section C | Typical Mamre Road Frontage
Scale 1:200

Masterplan /

Mamre Road Frontage Planting

Indicative Species



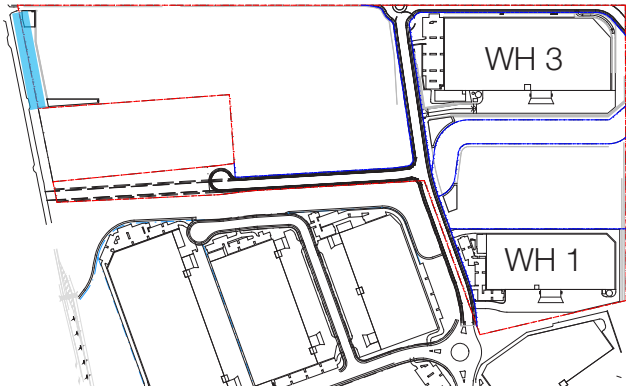
Angophora costata



Eucalyptus moluccana



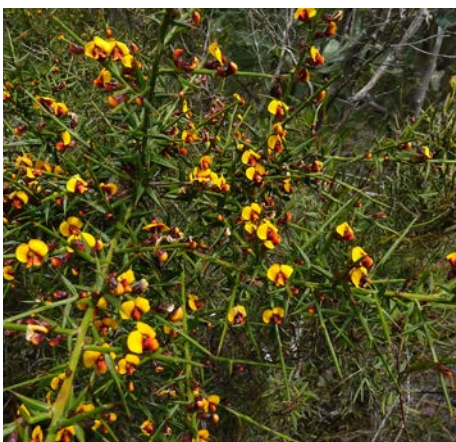
Melaleuca styphelioides



Atriplex nummularia



Baeckea virgata



Daviesia ulicifolia



Doryanthes excelsa



Imperata cylindrica

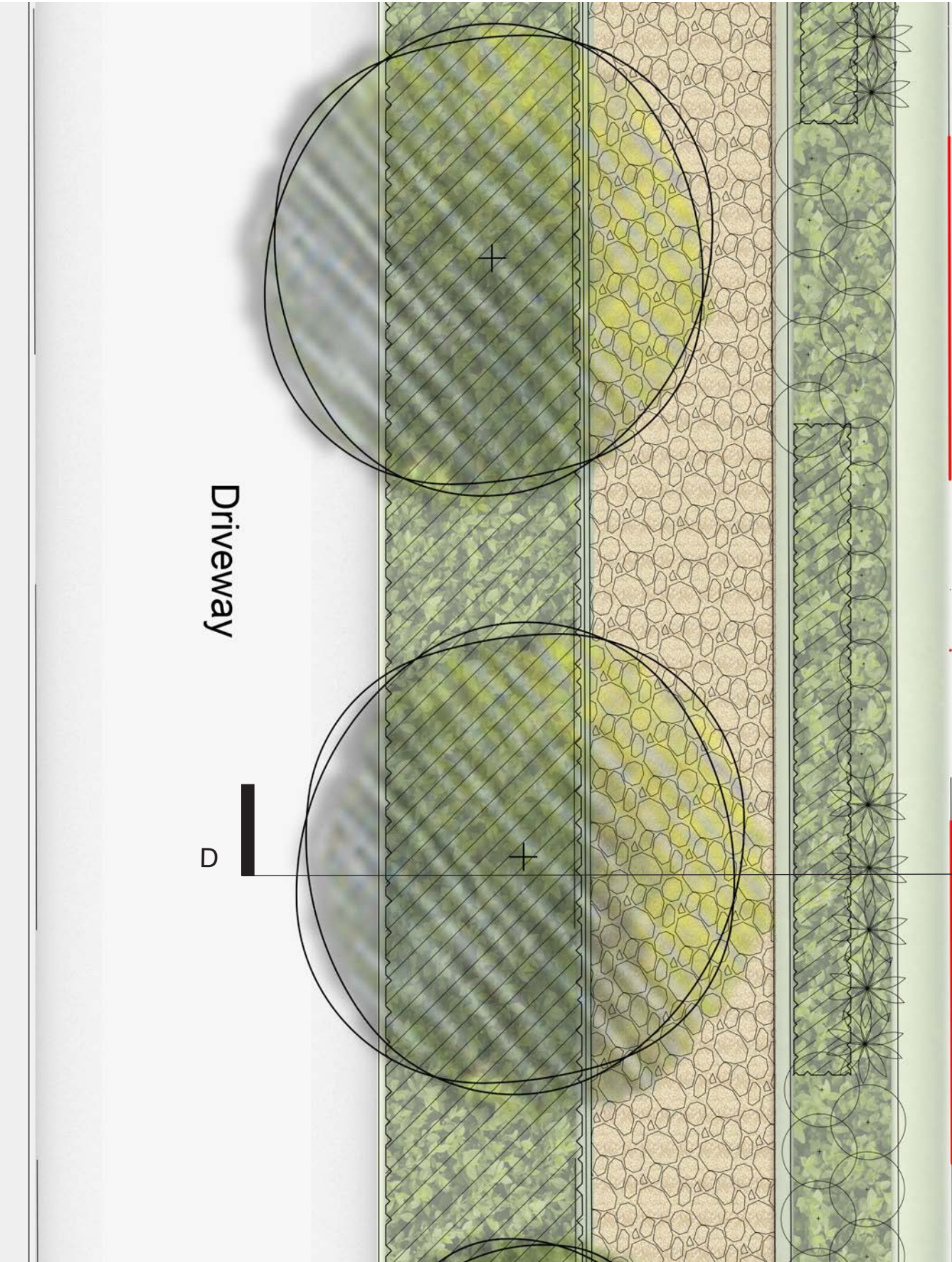


Dianella caerulea

Mamre Road Frontage

Code	Botanic Name	Common Name	Mature Size (h x w) (m)	Pot Size	Density
TREES					
Ac	Angophora costata	Smooth Barked Apple	20 X 9	100L	As Shown
Ap	Acacia parramattensis	Parramatta Wattle	10 x 6	100L	As Shown
Cc	Corymbia citriodora	Lemon Scented gum	30 x 8	100L	As Shown
Em	Eucalyptus moluccana	Grey Box	25 X 8	100L	As Shown
Ms	Melaleuca styphelioides	Prickly Leaved Paperbark	8 x 6	100L	As Shown
SHRUBS & ACCENTS					
AsM	Atriplex nummularia	Old man saltbush	2 x 2	200mm	As Shown
Bv	Baeckea virgata	Tall Backea	3 x 2	200mm	As Shown
Ca	Correa alba	White correa	1.5 x 1	200mm	As Shown
De	Doryanthes excelsa	Gynea Lily	1.8 x 1.5	200mm	As Shown
Du	Daviesia ulicifolia	Gorse Bitter Pea	3 x 2.5	200mm	As Shown
Dv	Dodonea viscosa	Hop Bush	1 x 1	200mm	As Shown
Em	Eremophila maculata	Emu bush	.5 x 1.2	200mm	As Shown
Gj	Grevillea juniperina	Juniper leaf grevillea	1.5 x 1	200mm	As Shown
Wf	Westringia fruticosa	Coastal Roasemary	1 x 1	150mm	As Shown
GRASSES AND GROUNDCOVERS					
Dc	Dianella caerulea	Flax Lily	0.8x 0.5	150mm	5/m ²
Ic	Imperata cylindrica	Cogon grass	1.2 x 0.7	150mm	5/m ²
LI	Lomandra longifolia	Matt Rush	1 x 1	150mm	5/m ²
Mp	Myoporum parvifolium	Creeping Boobialla	.3 x 2	150mm	5/m ²
Ta	Themeda australis	Kangaroo Grass	1 x .5	150mm	5/m ²
Wc	Wahlenbergia communis	Tufted Bluebell	0.75	150mm	5/m ²

Masterplan / Boundary Treatment



Character imagery



Tall canopy trees where possible to soften and screen retaining walls



Low planting directly beneath trees



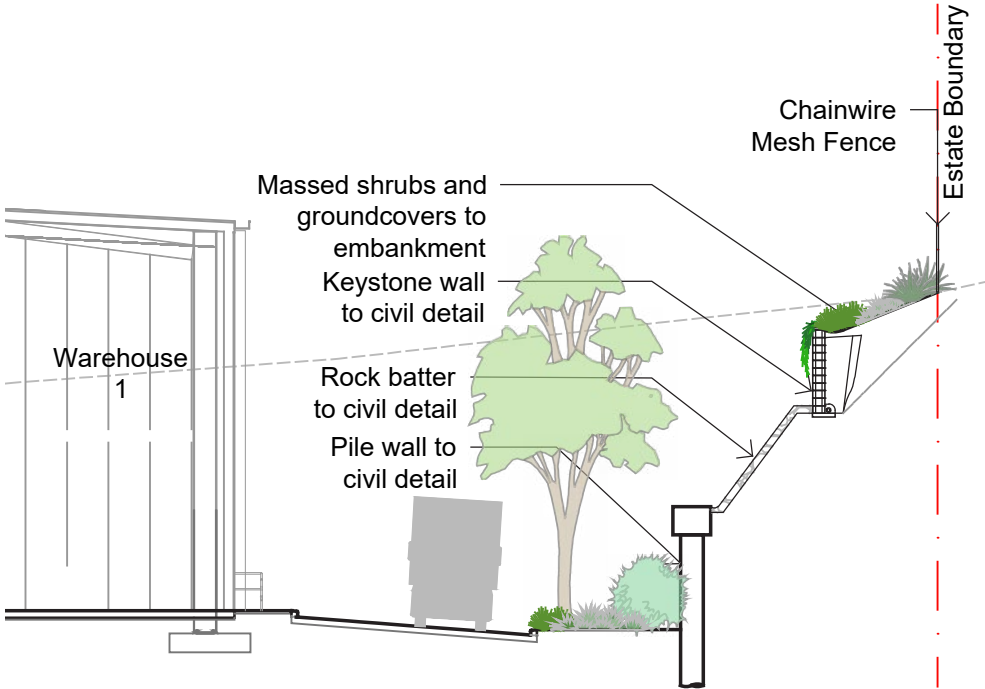
Terraced retaining walls with cascading landscape where possible



Landscape Strategy

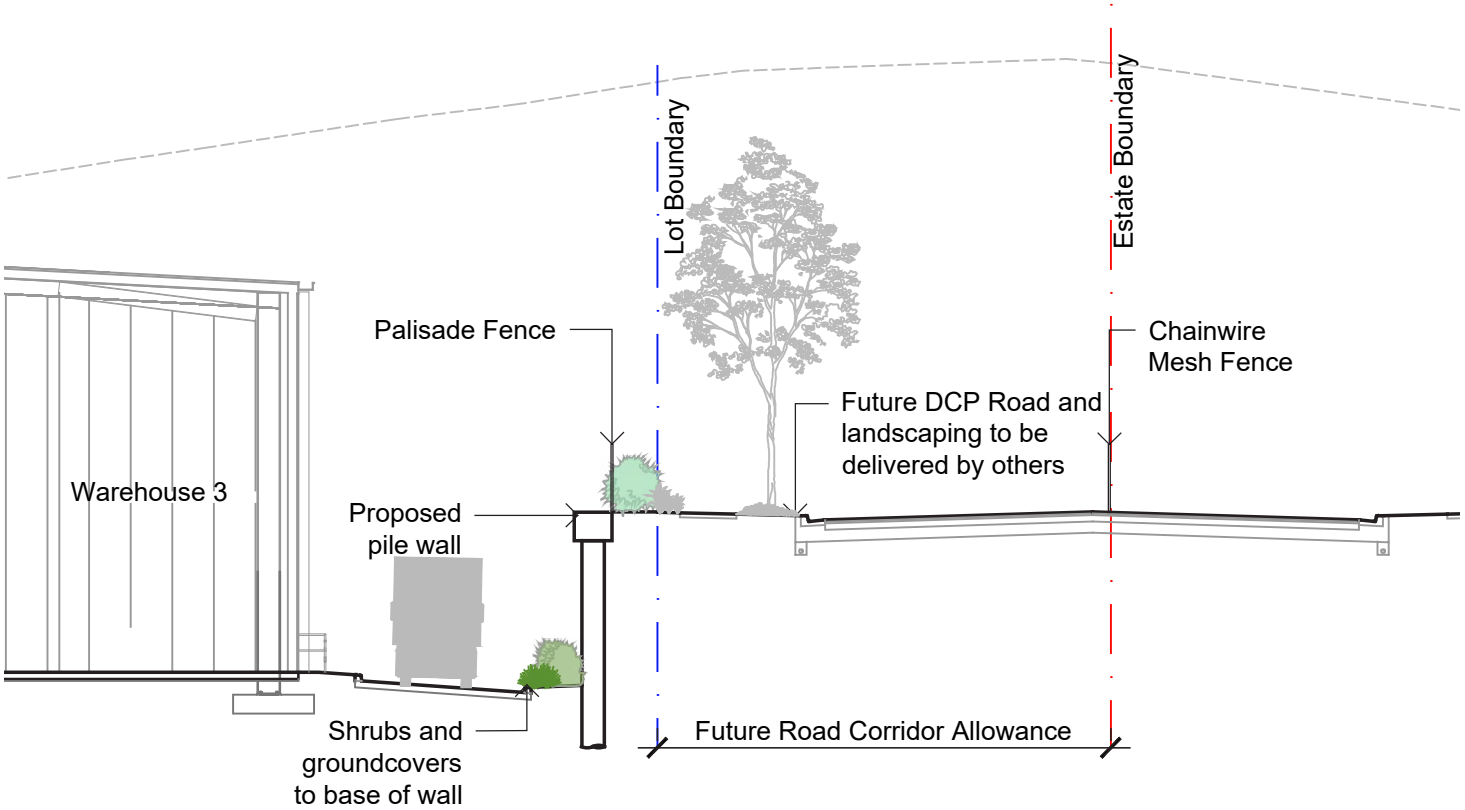
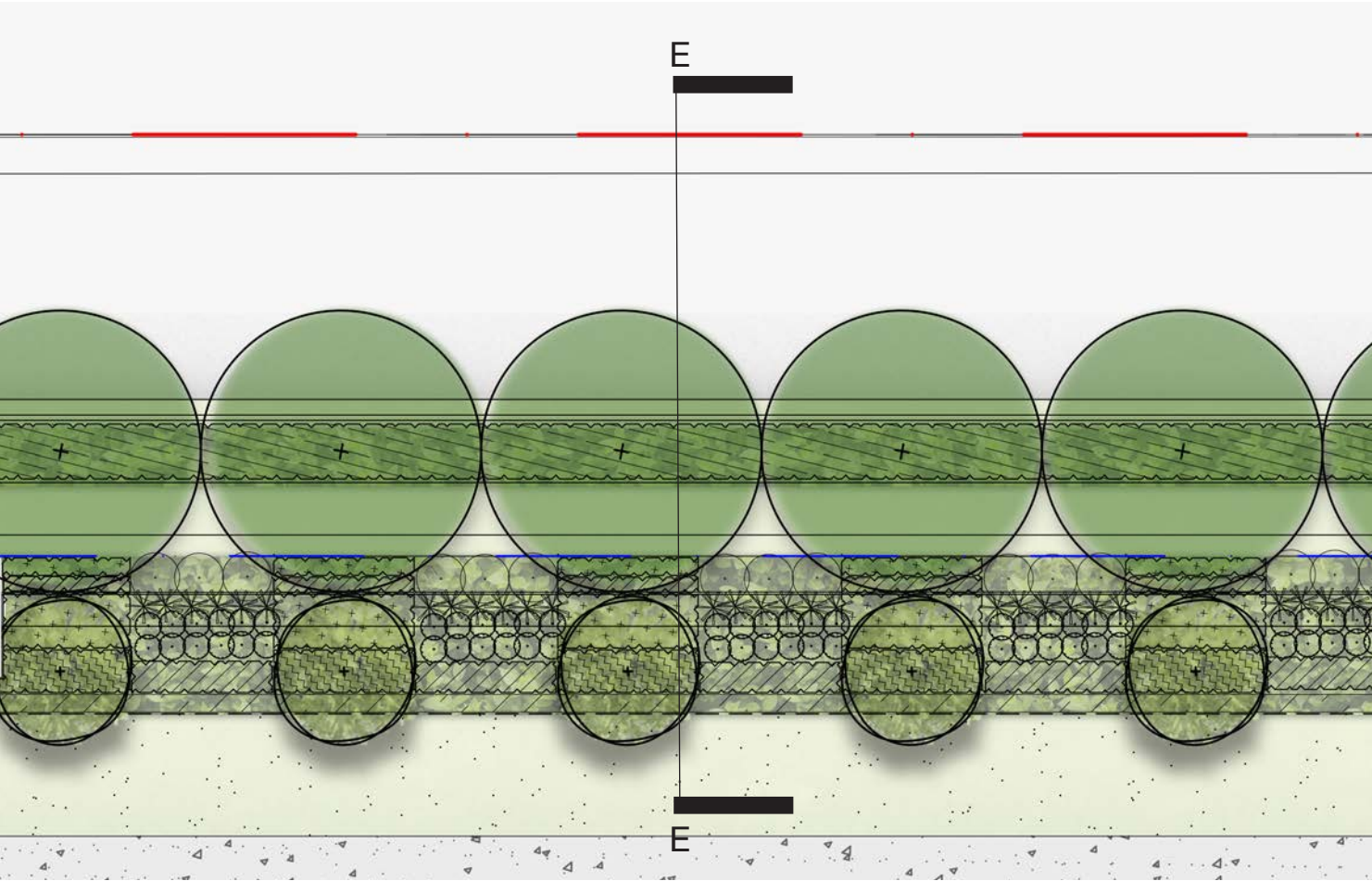
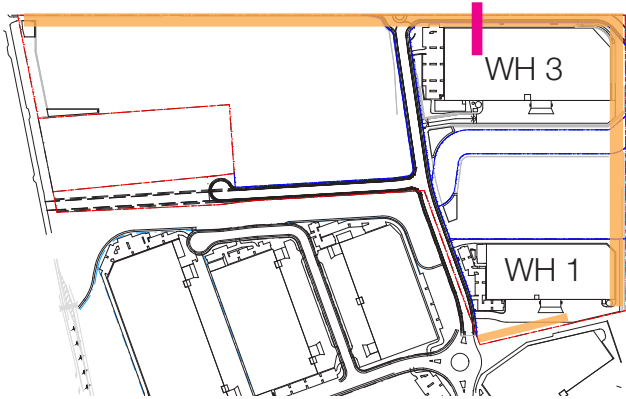
Boundary treatments will feature planting of native shrub grass and groundcovers. In locations where there is a retaining wall below cascading plants will be provided to break up the mass of the wall.

Trees will be located at the base of the wall for screening.



Section D | Typical Boundary Cross Section
Scale 1:200

Masterplan / Boundary Treatment



Section E | Typical Boundary Cross Section
Scale 1:200

Masterplan / Boundary Planting

Indicative Species



Acacia parramattensis



Corymbia citriodora



Eleocharis reticulatus



Ceratopetalum gummiferum



Acmena smithii var. minor



Atriplex nummularia



Correa alba



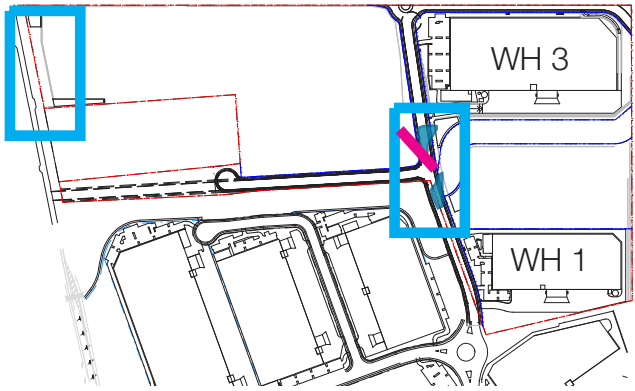
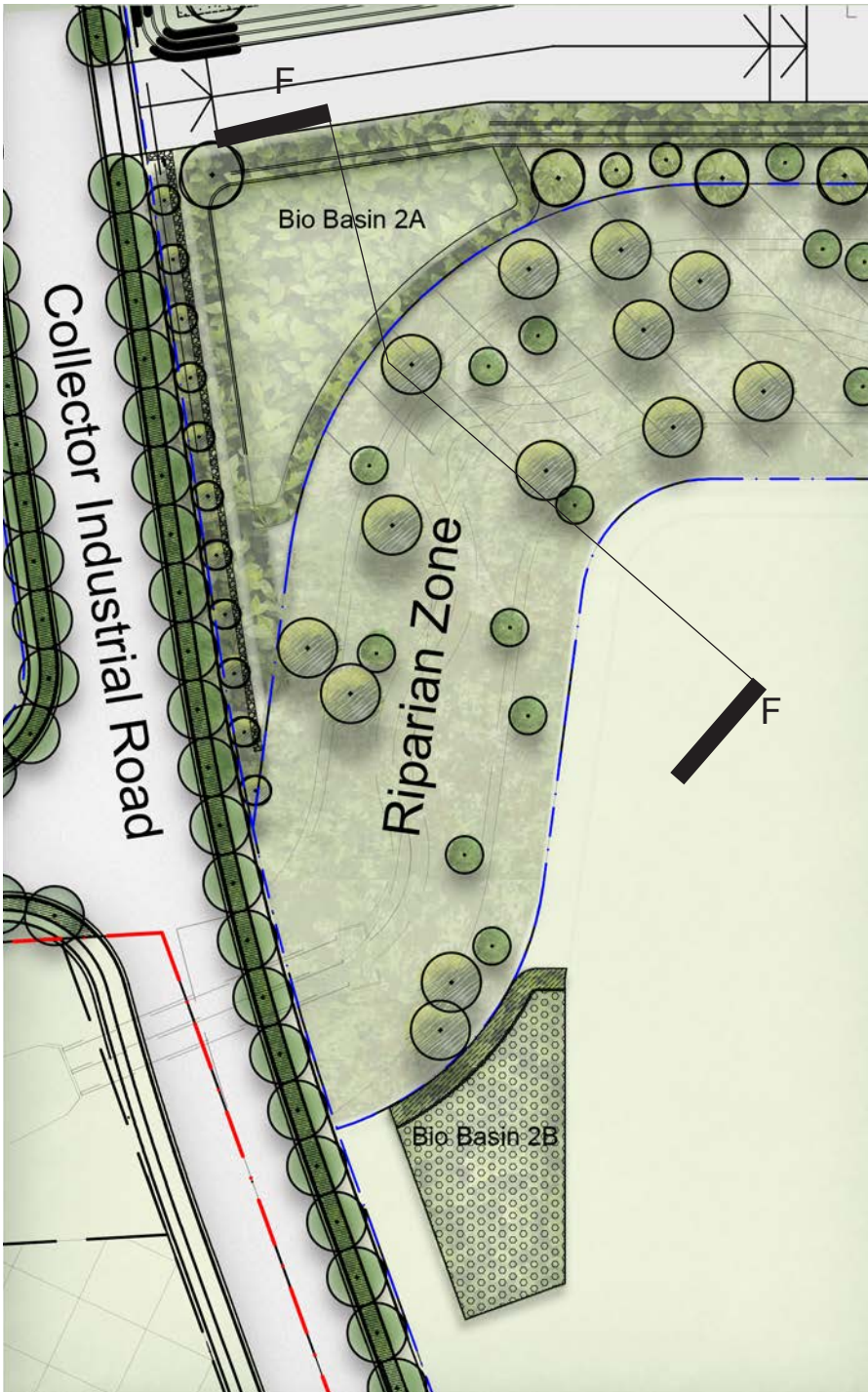
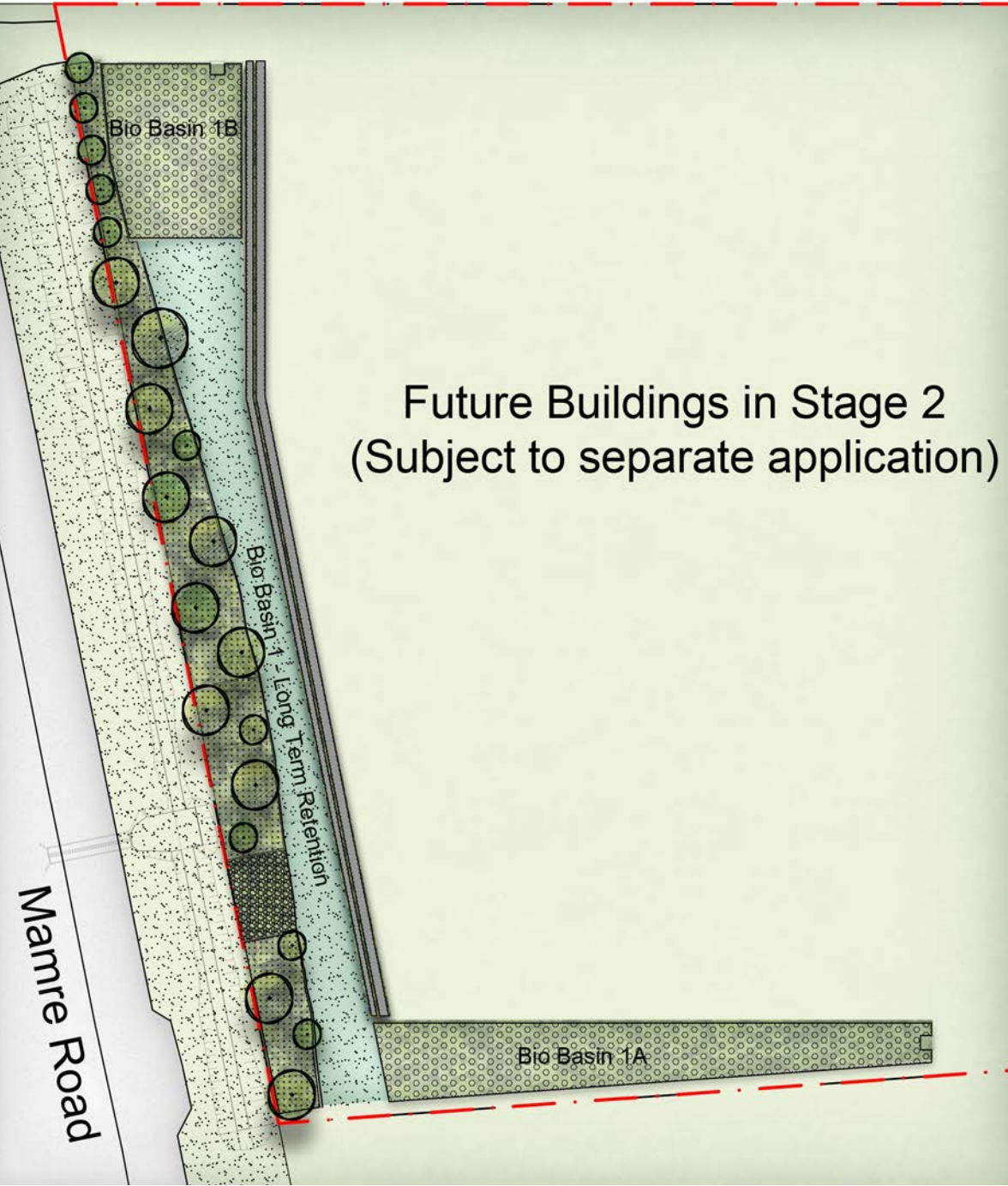
Eremophila maculata



Myoporum parvifolium

Boundary					
Code	Botanic Name	Common Name	Mature Size (h x w) (m)	Pot Size	Density
TREES					
Ap	Acacia parramattensis	Parramatta Wattle	10 x 6	100L	As Shown
Cc	Corymbia citriodora	Lemon Scented gum	30 x 8	100L	As Shown
Cg	Ceratopetalum gummiferum	NSW Christmas Bush	5 x 3	100L	As Shown
Er	Eleocharis reticulatus	Blueberry Ash	9 x 3	100L	As Shown
Eu	Elaeocarpus Eumundi	Quandong	7 x 2	100L	As Shown
Ac	Angophora costata	Smooth Barked Apple	20 X 9	100L	As Shown
SHRUBS & ACCENTS					
An	Acmena smithii var. minor	Lilly Pilly	2 x 1.2	200mm	As Shown
AsM	Atriplex nummularia	Old man saltbush	2 x 2	200mm	As Shown
Bv	Baeckea virgata	Tall Backea	3 x 2	200mm	As Shown
Ca	Correa alba	White correa	1.5 x 1	200mm	As Shown
Dv	Dodonea viscosa	Hop Bush	1 x 1	200mm	As Shown
Em	Eremophila maculata	Emu bush	.5 x 1.2	200mm	As Shown
Gj	Grevillea juniperina	Juniper leaf grevillea	1.5 x 1	200mm	As Shown
GRASSES AND GROUNDCOVERS					
Dc	Dianella caerulea	Flax Lily	0.8x 0.5	150mm	5/m²
Em	Entolasia marginata	Bordered Panic	0.8 x 0.5	150mm	5/m²
Hs	Hibbertia scandens	Climbing Guinea Flower	climbing	150mm	5/m²
Ic	Imperata cylindrica	Blady Grass	.75 x .3	150mm	5/m²
Li	Lomandra longifolia	Mat Rush	1 x 1	150mm	5/m²
Mp	Myoporum parvifolium	Creeping Boobialla	.3 x 2	150mm	5/m²
Ms	Microlaena stipoides	Weeping Grass	0.7 x 0.3	150mm	5/m²
Ta	Themeda australis	Kangaroo Grass	1 x .5	150mm	5/m²
Vh	Viola hederacea	Native Violet	.15 x 1	150mm	5/m²

Masterplan /
Basin

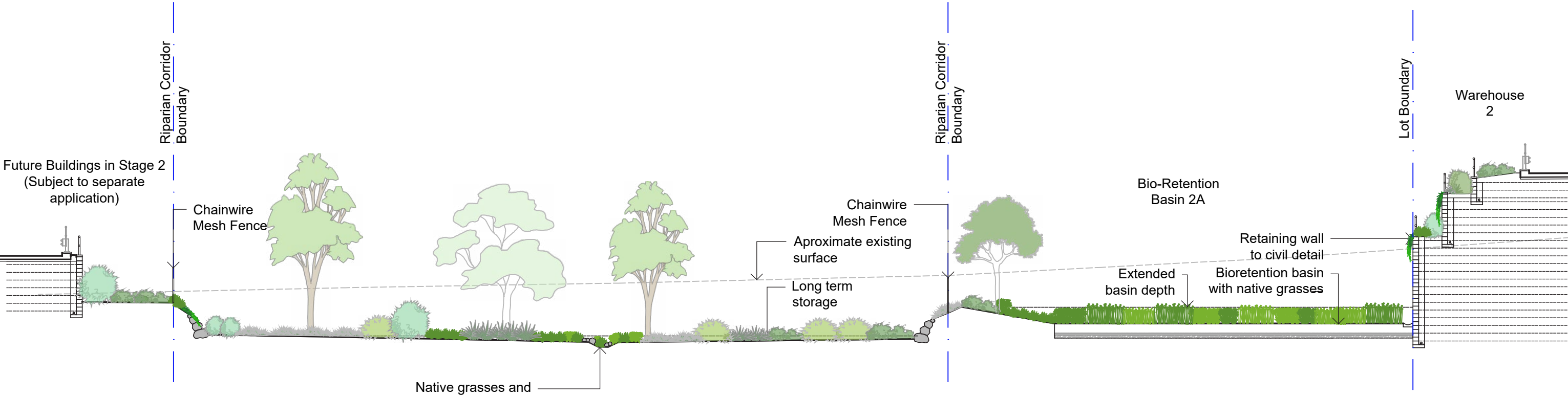
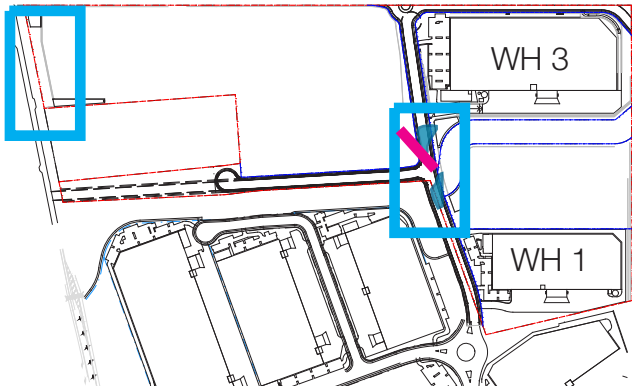


Landscape Strategy

The Stormwater basin will feature planting to compliment the water retention and treatment processes designed by civil.

Planting to basins will consist of native grasses and macrophyte species.

Masterplan /
Basin



Section F | Bio Retention 2A
Scale 1:200

Masterplan / Basin Planting

Indicative Species



Carex inversa



Imperata cylindrica var. major



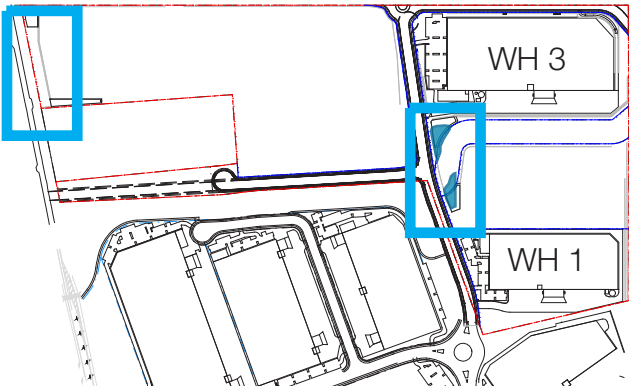
Lomandra longifolia



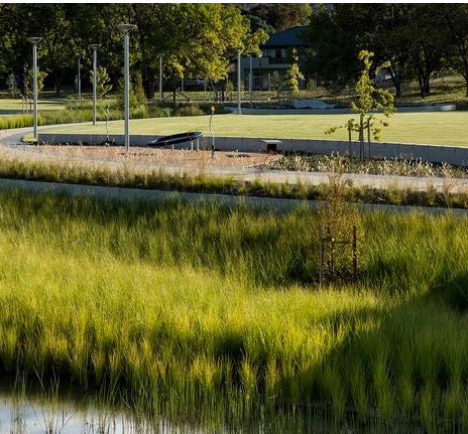
Juncus usitatus



Themeda australis



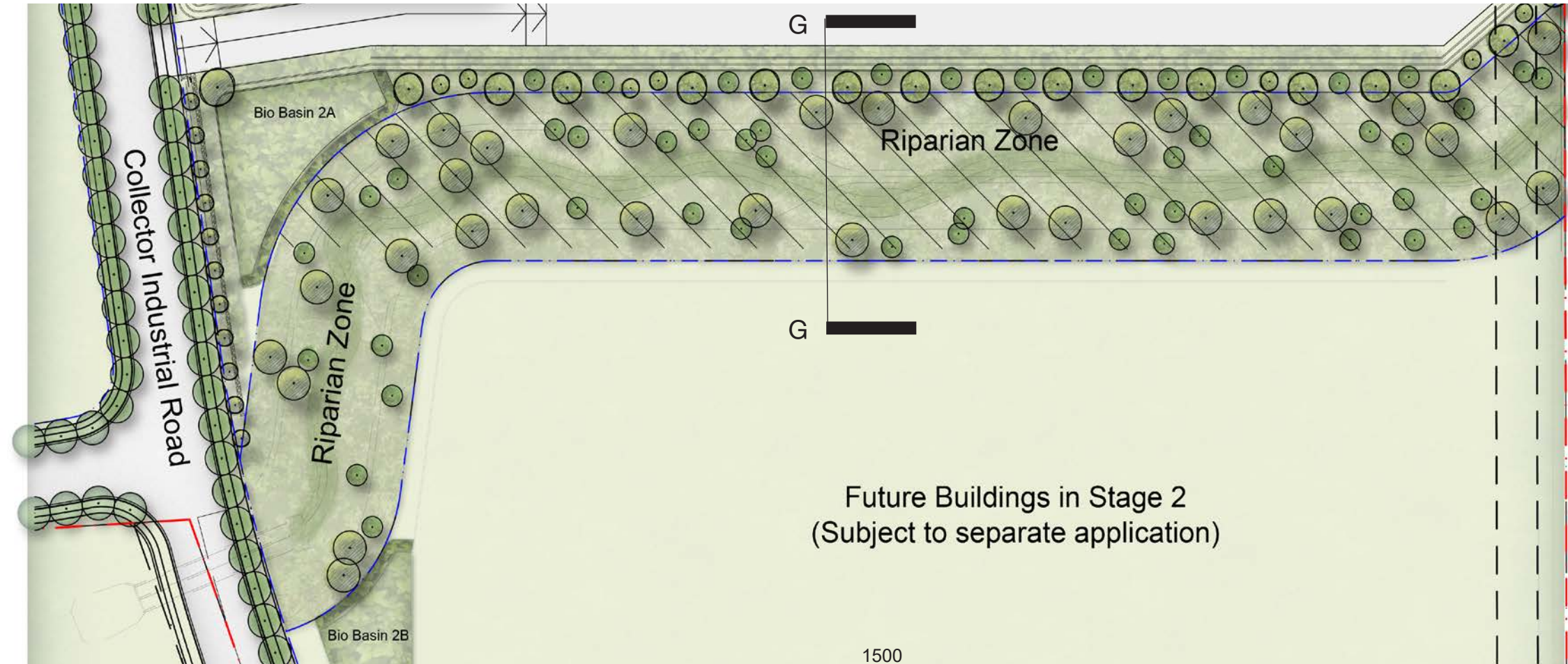
Character imagery



Typical Planting Matrix

Basin Planting					
Code	Botanic Name	Common Name	Mature Size (h x w) (m)	Pot Size	Density
GRASSES AND GROUNDCOVERS					
Ci	Carex inversa	Knob Sedge	.1 x .1	150mm	5/m ²
LI	Lomandra longifolia	Matt Rush	1 x 1	150mm	5/m ²
IC	Imperata cylindrica var. major	Blady Grass	.75 x .3	150mm	5/m ²
Ju	Juncus usitatus	Common Rush	.6 x 1	150mm	5/m ²
Ta	Themeda australis	Kangaroo Grass	1 x .5	150mm	5/m ²

Masterplan / Riparian Zone



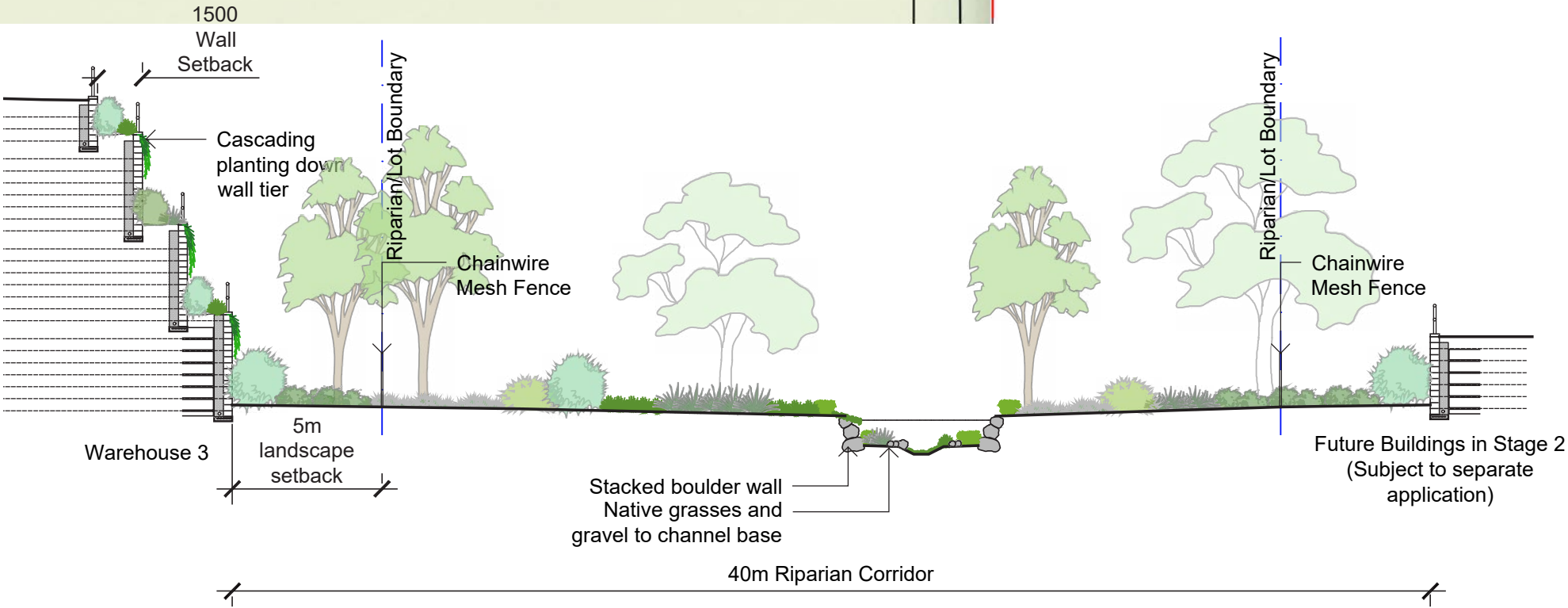
Landscape Strategy

The Riparian Zone will be planted and maintained in accordance with Vegetation Management Plan and report produced by Cumberland Ecology. The riparian zone will be demarcated with fencing - security fencing where adjoining lots and post and rail as a boundary marker style.

Character imagery



Native ground covers and grasses



Section G | Typical Riparian Cross Section 1:200

Masterplan /
Riparian Zone Planting



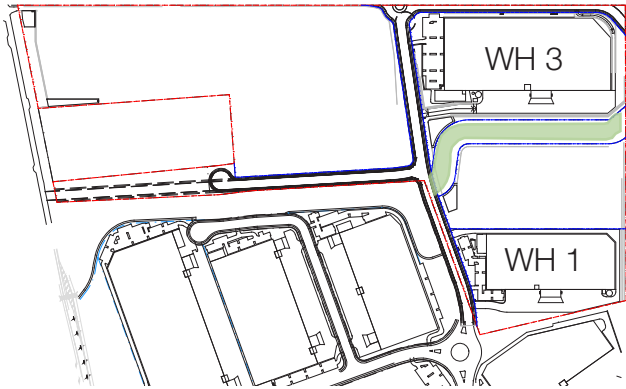
Eucalyptus amplifolia



Eucalyptus moluccana



Acacia parramattensis



Acmena smithii var. minor



Bursaria spinosa



Bothriochloa decipiens



Dianella caerulea



Imperata cylindrica



Lomandra longifolia

Riparian Zone					
Code	Botanic Name	Common Name	Mature Size (h x w) (m)	Pot Size	Density
TREES					
Ea	Eucalyptus amplifolia	Cabbage Gum	30	100L	As Shown
Em	Eucalyptus moluccana	Grey Box	25	100L	As Shown
Et	Eucalyptus tereticornis	Forest Red Gum	35	100L	As Shown
Ap	Acacia parramattensis	Parramatta Wattle	10 x 6	100L	As Shown
SHRUBS & ACCENTS					
AsM	Acmena smithii var. minor	Lilly Pilly	2 x 2	200mm	As Shown
Bs	Bursaria spinosa	Blackthorn	4 x 3	200mm	As Shown
GRASSES AND GROUNDCOVERS					
Bd	Bothriochloa decipiens car. Decipiens	Pitted Blue Grass	1	150mm	5/m²
Ba	Brunoniella australis	Blue Trumpets	0.3x	150mm	5/m²
Ca	Carex appressa	Tall Sedge	0.9 x 1	150mm	5/m²
Cas	Centella asiatica	Indian Pennywort	.2 x 1	150mm	5/m²
Ct	Chloris truncata	Windmill Grass	.5 x .3	150mm	5/m²
Dc	Dianella caerulea	Blue Flax Lily	1 x 1	150mm	5/m²
Dr	Dichondra repens	Kidney Weed	.1 x 1	150mm	5/m²
Eo	Echinopogon ovatus	Forest Hedgehog Grass	1.2	150mm	5/m²
Em	Entolasia marginata	Bordered Panic	0.8 x 0.5	150mm	5/m²
Ic	Imperata cylindrica	Blady Grass	.75 x .3	150mm	5/m²
Ju	Juncus usitatus	Common Grass	.6 x 1	150mm	5/m²
LI	Lomandra longifolia	Mat Rush	1 x 1	150mm	5/m²
Ms	Microlaena stipoides	Weeping Grass	0.7 x 0.3	150mm	5/m²
Vh	Viola hederacea	Native Violet	.15 x 1	150mm	5/m²