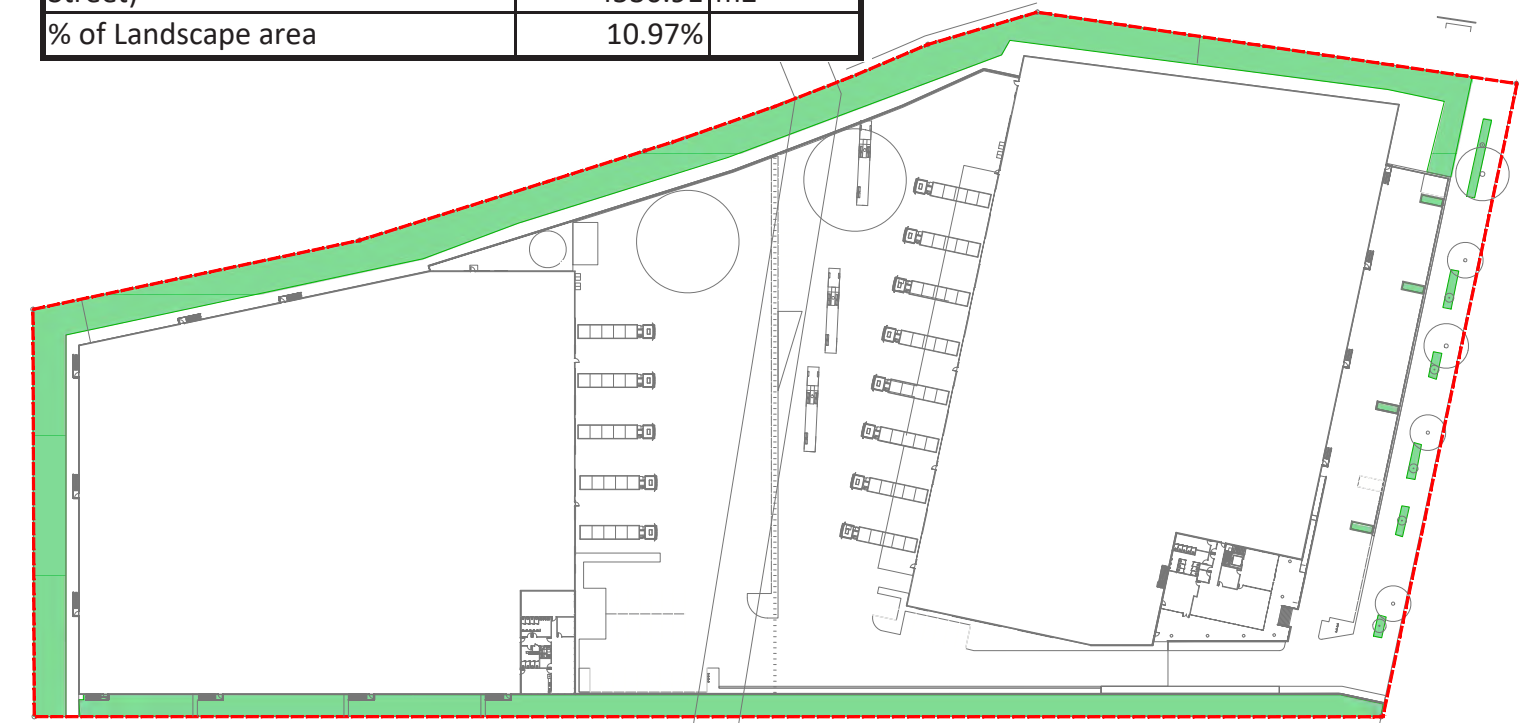


Proposed Warehouse Development

LOT 9 Mcpherson Street, Banksmeadow NSW 2019

Landscape Documentation For State Significant Development

Area calculations for Lot 9 Mcpherson Street Banksmeadow	Area	Unit
Site area	41290	m2
Total landscape area (Inc. Existing garden beds along McPherson Street)	4530.91	m2
% of Landscape area	10.97%	



Landscape Area



OVERALL PLAN

Drawing Register:

Dwg No.	Drawing Name	Dwg No.	Drawing Name
SSD-00	Landscape Site Masterplan	SSD-06	Typical Landscape Details & Specification
SSD-01	Landscape Plan South	SSD-07	Planting Schedules & Images
SSD-02	Landscape Plan North		
SSD-03	Landscape Detailed Plan South		
SSD-04	Landscape Detailed Plan North		
SSD-05	Landscape Sections: AA & BB		

Drawing Title:
Landscape Site Masterplan

DWG No: **SSD-00**

GEOSCAPES
LANDSCAPE ARCHITECTS
Suite 215, 284 Victoria Av, Chatswood NSW 2067 Ph. (02) 9411 1485
www.geoscapes.com.au
ABN 84 620 205 781 ACN 620 205 781

Architect:
Axis Architectural

Client:
ORICA

Landscape Design Statement

THE PROJECT AT LOT 9 MCPHERSON STREET, BANKSMEADOW, INVOLVES THE DEVELOPMENT OF A 4HA INDUSTRIAL ESTATE OVER AN EXISTING COMPENSATORY FLOOD BASIN. THE SITE IS ACCESSED VIA A PROPOSED DRIVEWAY FROM MCPHERSON STREET.

THE LANDSCAPE DESIGN AIMS TO PROVIDE THE FOLLOWING OUTCOMES:

- RETAIN SUBSTANTIAL EXISTING PLANTING ALONG THE NORTH AND EAST BOUNDARIES WHICH HAS PREVIOUSLY

- PROPOSE FURTHER PLANTING ALONG THE NORTH AND EAST BOUNDARIES WHERE GAPS IN THE VEGETATION HAVE BEEN OBSERVED FROM SITE VISITS.

- PROVIDE SCREENING OF THE RAISED DECK IN THE FORM OF PROPOSED PLANTING TO THE WESTERN BOUNDARY, INCLUDING TREES, GRASSES AND SEDGES.

- PROPOSE PLANTING SPECIES THAT ARE CONSULTANT WITH THOSE SELECTED IN THE '2013 SOUTHLANDS REDEVELOPMENT LANDSCAPE MANAGEMENT PLAN'.

Scale:	Date:	Job Number:	North:	Revision					FOR DEVELOPMENT APPROVAL	
1:450 @ A1 1:900 @ A3	10.07.20	180829		Rev	Date	Description	Drawn	Checked		
Project: Lot 9 Mcpherson Street Banksmeadow NSW 2019				-	22.11.18	For SSD DRAFT	CC	BG		
				A	11.01.19	For SSD	CC	BG		
				B	21.01.19	For SSD	CC	BG		
				C	10.07.20	For SSD	SW	BG		



LEGEND

SITE BOUNDARY

PROPOSED NATIVE TREE PLANTING

MIX OF NATIVE SHRUB PLANTING

EXTENT OF EXISTING VEGETATION TO BE PROTECTED AND RETAINED

PROPOSED AND SEDGES

3M WIDE SEALED ACCESS TRACK

HARDSTAND

EXISTING SECURITY FENCE TO BE RETAINED

BLACK MESH FENCE TO PERIMETER OF DECK

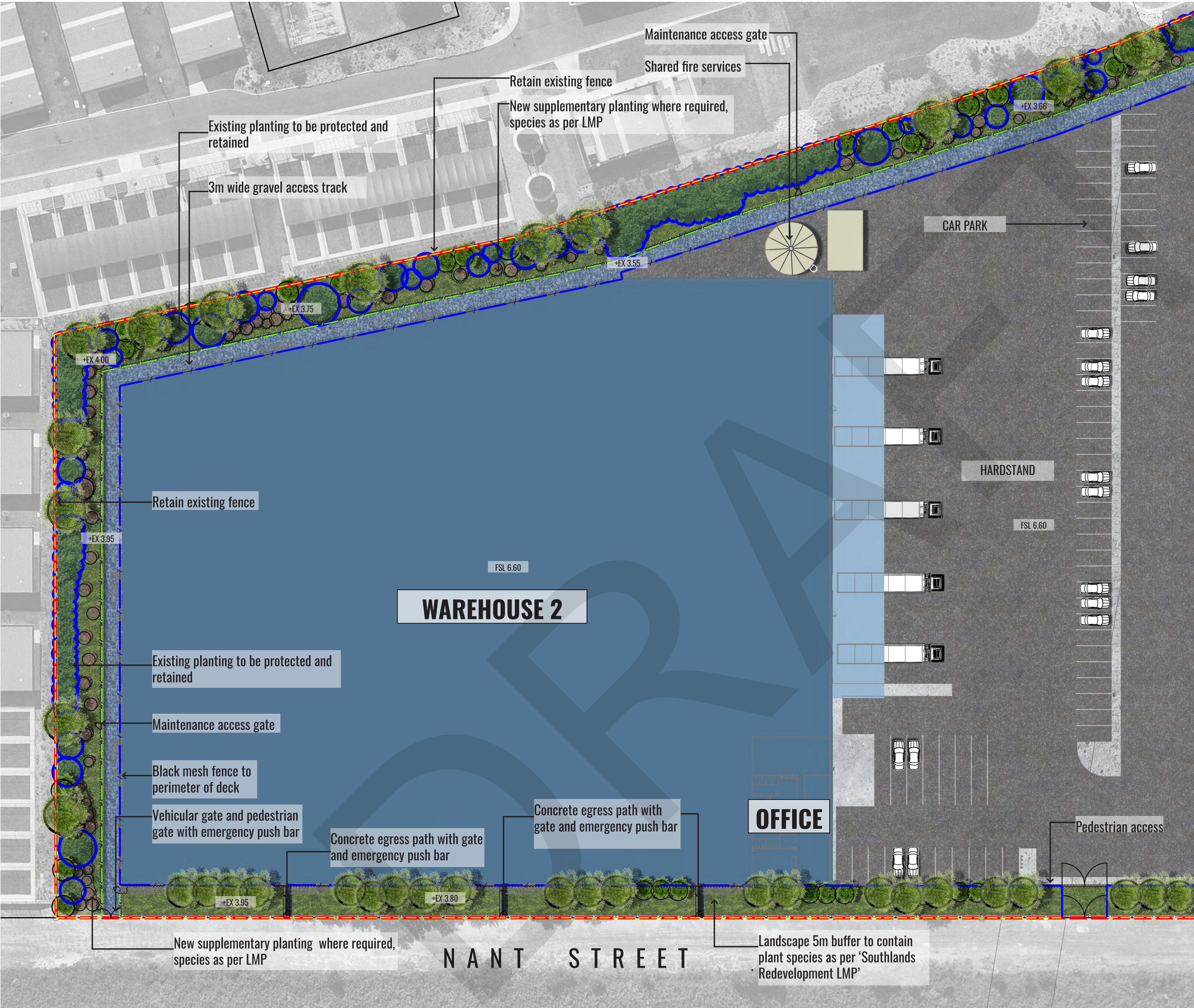
PROPOSED SECURITY FENCE

EXISTING RETAINING WALL TO BE RETAINED

PROPOSED ACCESS GATE

PROPOSED LEVELS

EXISTING LEVELS



LEGEND

- SITE BOUNDARY
- PROPOSED NATIVE TREE PLANTING
- MIX OF NATIVE SHRUB PLANTING
- EXTENT OF EXISTING VEGETATION TO BE PROTECTED AND RETAINED
- PROPOSED AND SEDGES
- 3M WIDE SEALED ACCESS TRACK
- HARDSTAND
- EXISTING SECURITY FENCE TO BE RETAINED
- BLACK MESH FENCE TO PERIMETER OF DECK
- PROPOSED SECURITY FENCE
- EXISTING RETAINING WALL TO BE RETAINED
- PROPOSED ACCESS GATE
- PROPOSED LEVELS
- EXISTING LEVELS

Drawing Title:
Landscape Plan North

DWG No:

SSD-02

GEOSCAPES
LANDSCAPE ARCHITECTS

Suite 215, 284 Victoria Av, Chatswood NSW 2067 Ph. (02) 9411 1485
www.geoscapes.com.au
ABN 84 620 205 781 ACN 620 205 781

Architect:
Axis Architectural

Client:

Scale: 1:300 @ A1
1:600 @ A3

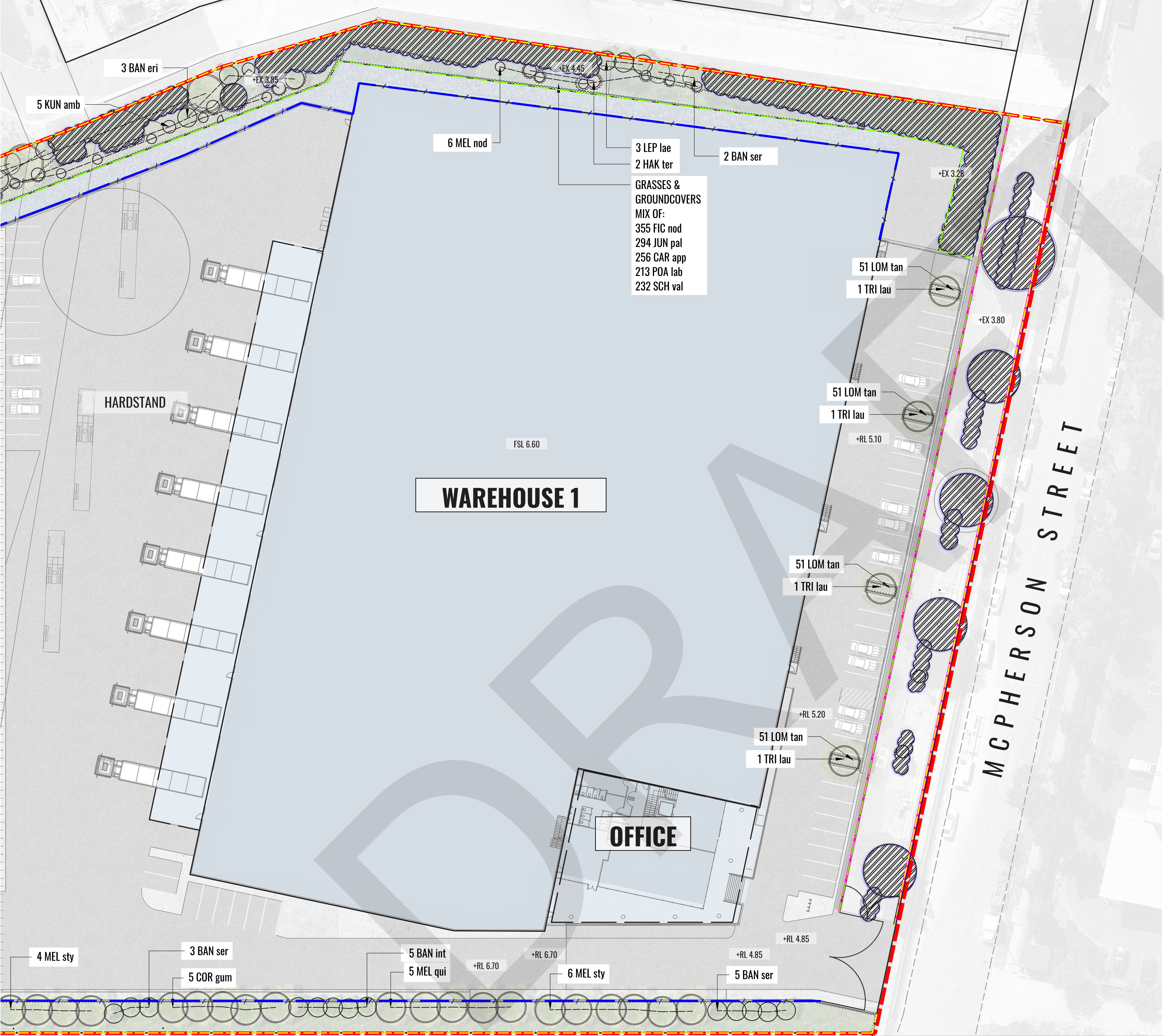
Date: 10.07.20

Job Number: 180829

North:

Project: Lot 9 Mcpherson Street
Banksmeadow NSW 2019

Revision			FOR DEVELOPMENT APPROVAL	
Rev	Date	Description	Drawn	Checked
-	22.11.18	For SSD DRAFT	CC	BG
A	11.01.19	For SSD	CC	BG
B	21.01.19	For SSD	CC	BG
C	10.07.20	For SSD	SW	BG



LEGEND

SITE BOUNDARY

PROPOSED NATIVE TREE PLANTING

MIX OF NATIVE SHRUB PLANTING

EXISTING VEGETATION TO BE PROTECTED AND RETAINED

MIX OF NATIVE GRASSES AND GROUND COVERS

EXISTING SECURITY FENCE TO BE RETAINED

BLACK MESH FENCE TO PERIMETER OF DECK

PROPOSED SECURITY FENCE

EXISTING RETAINING WALL TO BE RETAINED

PROPOSED ACCESS GATE

3 MEL nod

→

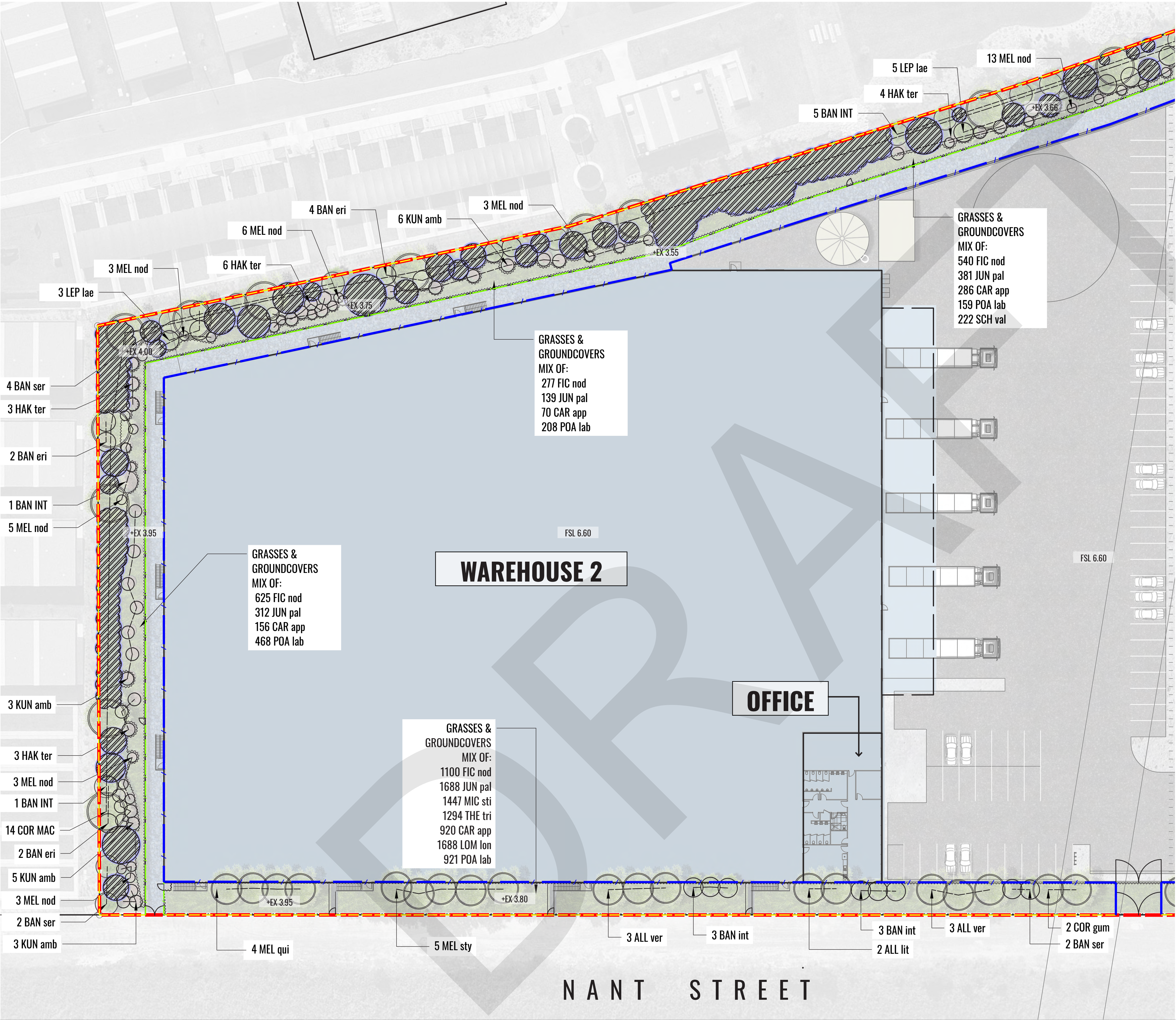
PLANTING CODE
(REFER TO PLANTING LIST)

+RL/FSL

PROPOSED LEVELS

+EX

EXISTING LEVELS



LEGEND

SITE BOUNDARY

PROPOSED NATIVE TREE PLANTING

MIX OF NATIVE SHRUB PLANTING

EXISTING VEGETATION TO BE PROTECTED AND RETAINED

MIX OF NATIVE GRASSES AND GROUND COVERS

EXISTING SECURITY FENCE TO BE RETAINED

BLACK MESH FENCE TO PERIMETER OF DECK

PROPOSED SECURITY FENCE

EXISTING RETAINING WALL TO BE RETAINED

PROPOSED ACCESS GATE

3 MEL nod

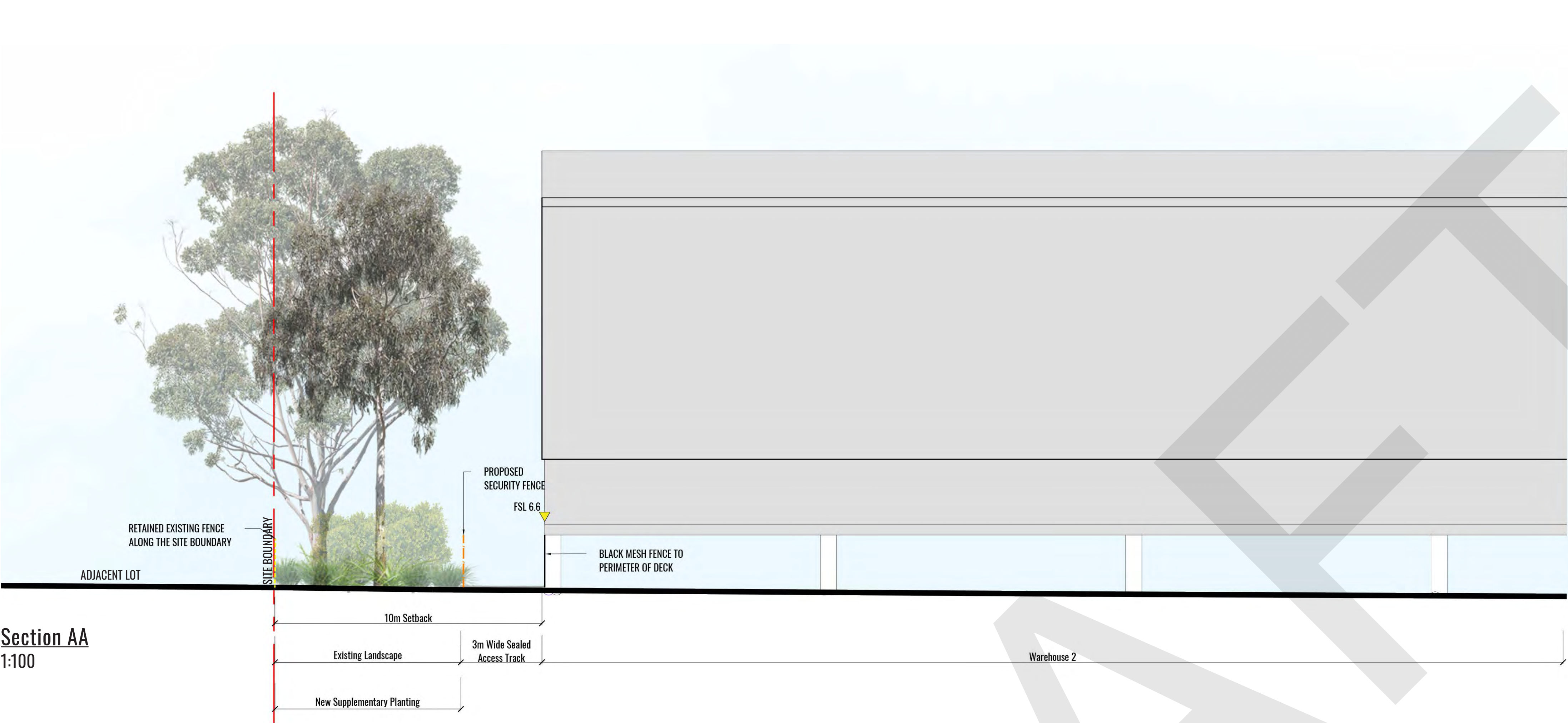
PLANTING CODE
(REFER TO PLANTING LIST)

+RL/FSL

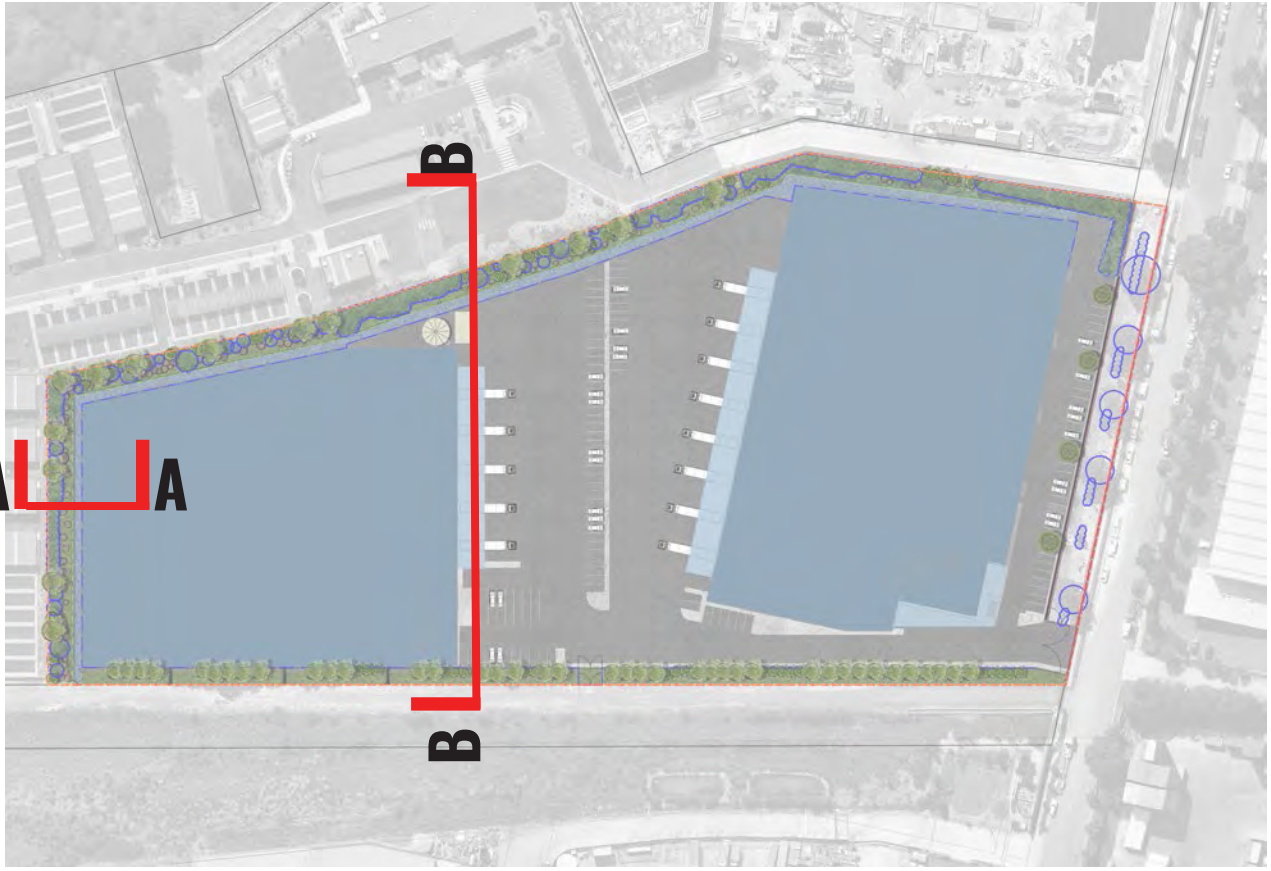
PROPOSED LEVELS

+EX

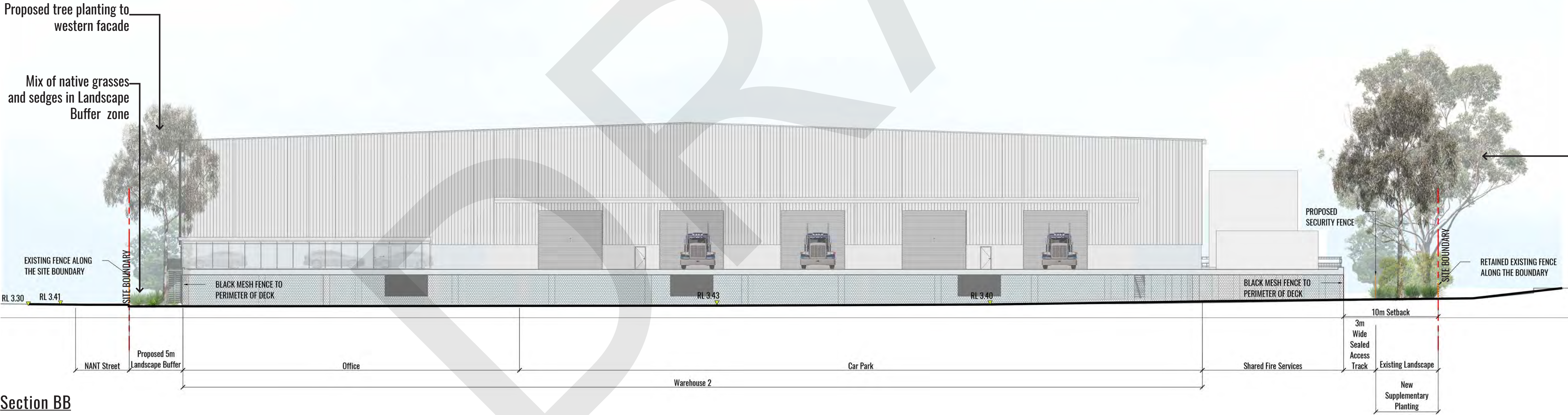
EXISTING LEVELS



Section AA
1:100



SECTION LOCATIONS



Section BB
1:200

Drawing Title:
Landscape Sections - AA & BB

DWG No:

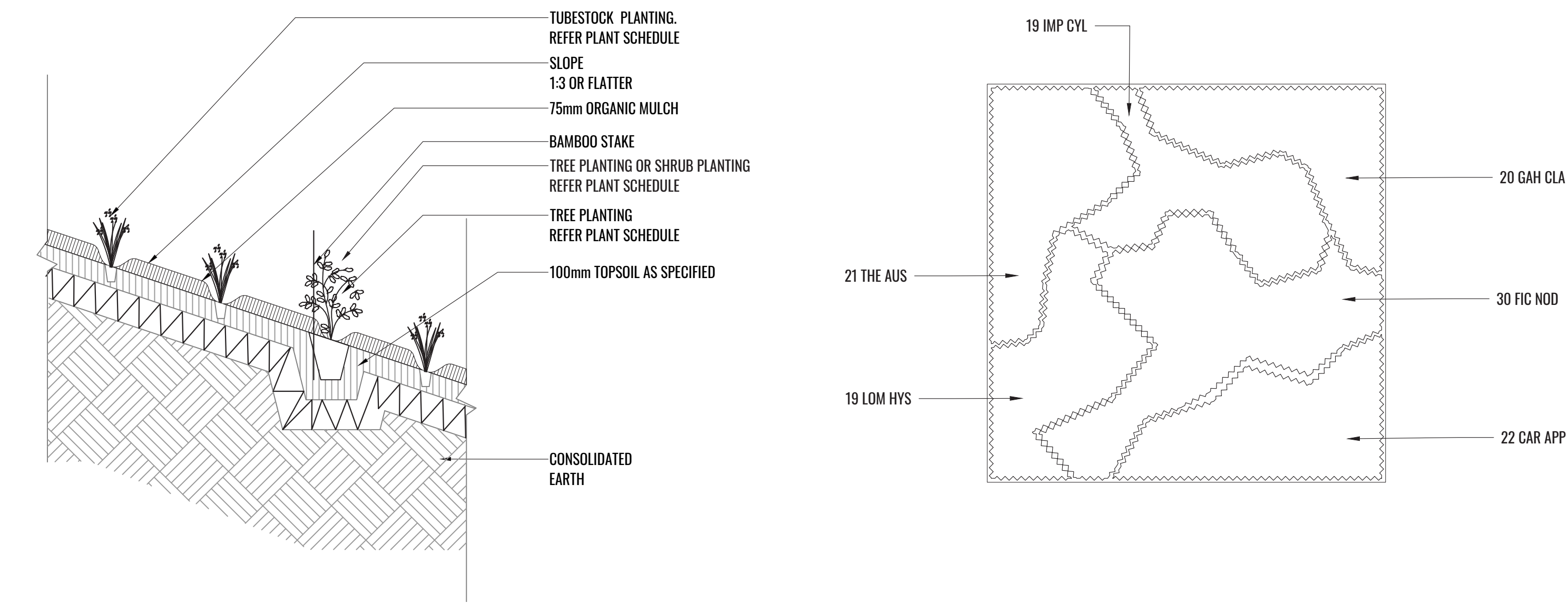
SSD-05

GEOSCAPES
LANDSCAPE ARCHITECTS
Suite 215, 284 Victoria Av, Chatswood NSW 2067 Ph. (02) 9411 1485
www.geoscapes.com.au
ABN 84 620 205 781 ACN 620 205 781

Architect:
Axis Architectural

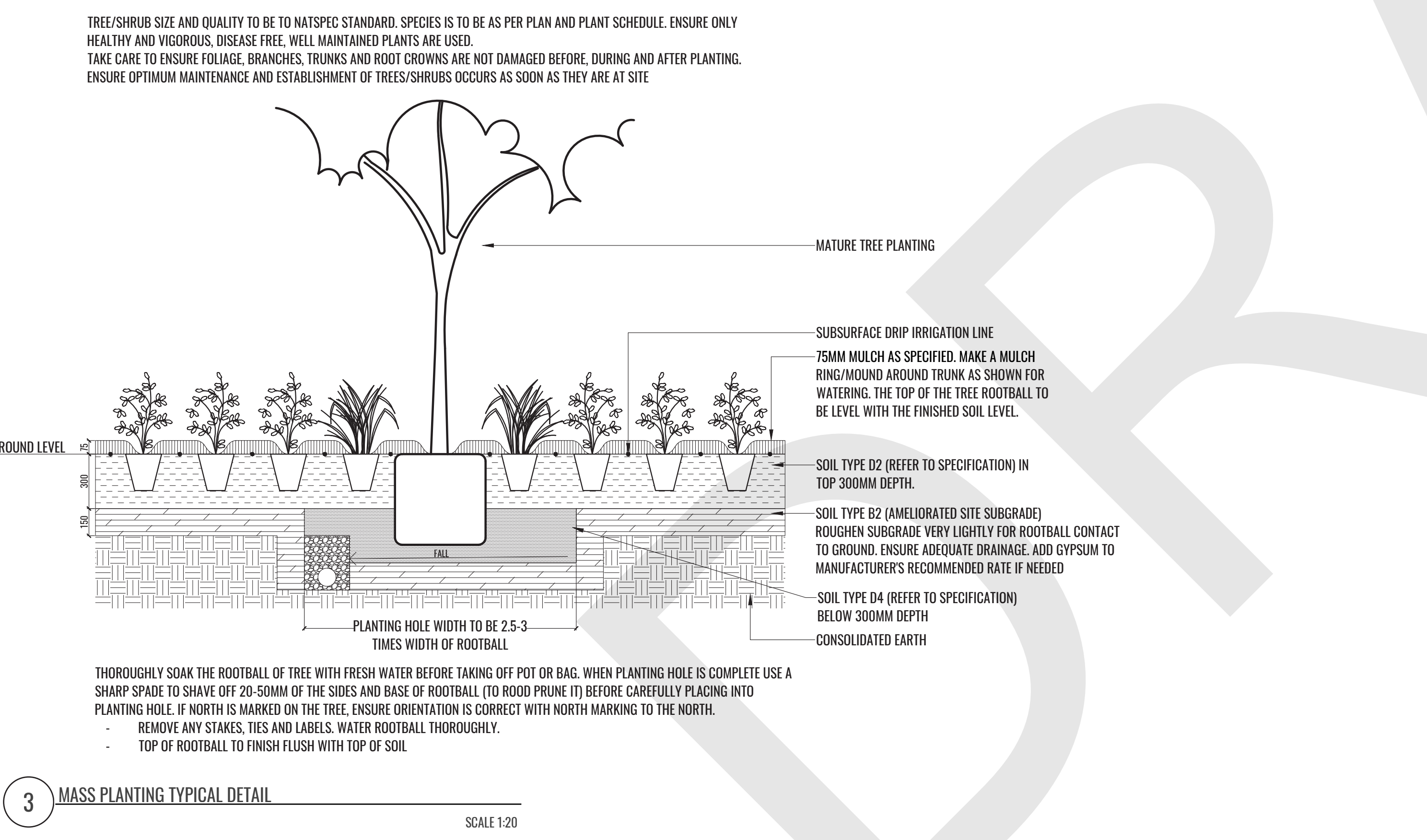
Client:

Scale:		Date:	Job Number:	North:	Revision				FOR DEVELOPMENT APPROVAL	
AS SHOWN		10.07.20	180829	N/A	Rev	Date	Description		Drawn	Checked
Project:		Lot 9 Mcpherson Street Banksmeadow NSW 2019			-	22.11.18	For SSD DRAFT		CC	BG
					A	11.01.19	For SSD		CC	BG
					B	21.01.19	For SSD		CC	BG
					C	10.07.20	For SSD		SW	BG



1 TYPICAL TUBESTOCK PLANTING DETAIL ON 1:3 GRADE OR FLATTER SCALE 1:20

2 NATIVE GRASSES & SEDGES MATRIX SCALE 1:50



3 MASS PLANTING TYPICAL DETAIL SCALE 1:20

Typical Specifications

The existing and proposed landscape planting should be managed in accordance with the specifications detailed within the ‘Southlands Redevelopment Landscape Management Plan’ written by JOCELYN RAMSAY & ASSOC. PTY. LTD & GHD. PTY. LIMITED. Weed management should be conducted on the site before any proposed landscape planting. Proposed plant numbers may increase as a result of clearing of weeds within the northern and eastern boundary. As a minimum the proposed planting should conform to the following:

General

Maintenance shall mean the care and maintenance of the landscape works by accepted horticultural practice as rectifying any defects that become apparent in the landscape works under normal use. The landscape contractor shall attend the site on a weekly basis to maintain the landscape works for the term of the maintenance period commencing from practical completion.

Standards

All grown or purchased plant stock must conform to all the conditions and requirements given in NATSPEC Guide: Specifying Trees. Soils to be in accordance with AS4419, mulching composts and conditioners to be in accordance with AS4454. Soils should conform to best practice specifications as listed in the Landscape Soils Handbook (Simon Leake & Elke Haege 2017).

Rubbish Removal

During the term of the maintenance period the Landscape Contractor shall undertake rubbish removal from the site on a weekly basis to ensure the site remains in tidy condition.

Weed Eradication

Weed growth that may occur in grassed, planted or mulched areas is to be removed using environmentally acceptable methods i.e. non-residual glyphosate herbicide (e.g. ‘Roundup’, applied in accordance with the manufacturer’s directions).

Tree Replacement

Trees shall show signs of healthy vigorous growth and be free from disease and not exhibit signs of stress prior to handover to the client. Any trees or plant that die or fail to thrive, or are damaged or stolen will be replaced. Replacement material shall have the maintenance period extended in accordance with the landscape contract conditions. Trees and plant materials shall be equal to the minimum requirements of species specified and approved material delivered to site. Should the condition decline from the approved sample the Superintendent reserves the right to reject the tree / plants. Frequency: as required.

Stakes

Adjust and/or replace stakes and ties where required. Remove staking and guying when instructed by the Superintendent

Pruning

Selective pruning may be required during the establishment period to promote a balanced canopy structure. These activities shall be carried out to the best horticultural and industry practice. All pruned material is to be removed from site.

Mulched Surfaces

All planter beds and garden areas shall have a minimum depth of 75mm Forest Fines mulch. All mulch is to be free of deleterious matter such as soil, weeds and sticks. Mulched surfaces are to be kept clean and tidy and free of any deleterious material and foreign matter. Reinstate depths to a uniform level of 75mm with mulch as specified, mulch to be free of any wood material impregnated with CCA or similar toxic treatment. Top up mulch levels prior to handover to client.

Watering

Implement an appropriate hand watering regime in areas not irrigated in association with current watering programme to maintain plant health and vigour. The program shall reflect seasonal conditions and plant species. Frequency: Weekly or as required.

Pest and Disease Control

The Landscape Contractor shall spray for pests and disease infestations when the pest and fungal attack has been positively identified and when their populations have increased to a point that will become detrimental to plant growth. Apply all pesticides to manufacturer’s directions. Frequency: weekly inspection

Fertilising

Generally check for signs of nutrient deficiencies (yellowing of leaves, failure to thrive), and adapt fertiliser regime to suit. Fertiliser should be applied at the beginning and the end of the (summer) growing season.

Supplementary Landscape Planting								
CODE	BOTANICAL NAME	COMMON NAME	MATURE HEIGHT	NATIVE	ENDEMIC	SIZE	PLANTING DENSITY	QTY*
	Trees							
BAN ser	<i>Banksia serrata</i>	Old Man Banksia	5m	✓	✓	5L	As Shown	8
BAN int	<i>Banksia integrifolia</i>	Coast banksia	5m	✓	✓	5L	As Shown	7
COR mac	<i>Corymbia maculata</i>	Spotted gum	30m	✓	✓	5L	As Shown	14
WAT flo	<i>Waterhousea floribunda</i>	Weeping Lilly Pilly	10m	✓		5L	As Shown	4
	Shrubs							
BAN eri	<i>Banksia ericifolia</i>	Heath Banksia	4m	✓	✓	5L	As Shown	11
HAK ter	<i>Hakea teretifolia</i>	Dagger Hakea	2m	✓	✓	5L	As Shown	18
KUN amb	<i>Kunzea ambigua</i>	Tick Bush	2m	✓	✓	5L	As Shown	22
LEP lae	<i>Leptospermum laevigatum</i>	Coast Ti Tree	3m	✓	✓	5L	As Shown	11
MEL nod	<i>Melaleuca nodosa</i>	Melaleuca	2m	✓	✓	5L	As Shown	45
	Grasses, Sedges & Groundcovers							
CAR ros	<i>Carpobrotus rossii</i> 'Aussie Rambler'	Native Pig Face	0.30m	✓		Tube	4/m2	116
FIC nod	<i>Ficinia nodosa</i>	Knobby Club Sedge	1m	✓	✓	Tube	7/m2	1651
SCH val	<i>Schoenoplectus validus</i>	Schoenoplectus	2m	✓	✓	Tube	7/m2	258
JUN pal	<i>Juncus pallidus</i>	Giant rush	2m	✓	✓	Tube	7/m2	980
POA lab	<i>Poa labillardieri</i>	Common Tussock Grass	0.3m	✓	✓	Tube	7/m2	902
CAR app	<i>Carex appressa</i>	Tussock Sedge	1.5m	✓	✓	Tube	7/m2	622

5M Buffer Planting To NANT Street								
CODE	BOTANICAL NAME	COMMON NAME	MATURE HEIGHT	NATIVE	ENDEMIC	SIZE	PLANTING DENSITY	QTY*
	Trees							
ALL lit	<i>Allocasuarina littoralis</i>	Black Sheoak	15m	✓	✓	5L	As Shown	2
ALL ver	<i>Allocasuarina verticillata</i>	Drooping she-oak	10m	✓	✓	5L	As Shown	6
BAN ser	<i>Banksia serrata</i>	Old Man Banksia	5m	✓	✓	5L	As Shown	10
BAN int	<i>Banksia integrifolia</i>	Coast banksia	5m	✓	✓	5L	As Shown	11
MEL sty	<i>Melaleuca styphelioides</i>	Prickly Parperbark	8m	✓	✓	5L	As Shown	15
MEL qui	<i>Melaleuca quinquenervia</i>	Broad Leaf Paperbark	10m	✓	✓	5L	As Shown	9
COR gum	<i>Corymbia gummifera</i>	Red bloodwood	15m	✓	✓	5L	As Shown	7
	Grasses & Sedges							
CAR app	<i>Carex appressa</i>	Tussock Sedge	1.5m	✓	✓	Tube	7/m2	1066
FIC nod	<i>Ficus nodosa</i>	Knobby Club Sedge	1m	✓	✓	Tube	7/m2	1246
JUN pal	<i>Juncus pallidus</i>	Giant rush	1m	✓	✓	Tube	7/m2	1834
MIC sti	<i>Microlaena stipoides</i>	Schoenoplectus	1m	✓	✓	Tube	7/m2	1447
THE tri	<i>Themeda triandra</i>	Kangaroo Grass	1m	✓	✓	Tube	7/m2	1294
LOM lon	<i>Lomandra longifolia</i>	Mat Rush	1m	✓	✓	Tube	7/m2	1688
POA lab	<i>Poa labillardieri</i>	Common Tussock Grass	0.3m	✓	✓	Tube	7/m2	1067
SCH val	<i>Schoenoplectus validus</i>	Grey Club-Rush	1.5m	✓	✓	Tube	7/m2	454

*QTY INDICATIVE
FINAL NUMBERS TO BE CALCULATED AT CC/CONSTRUCTION STAGE

Planting Palette And Images



Melaleuca styphelioides



Melaleuca quinquenervia



Allocasuarina littoralis



Allocasuarina verticillata



Banksia serrata



Melaleuca ericifolia



Hakea teretifolia



Melaleuca nodosa



Melaleuca decora



Banksia integrifolia



Acacia parramattensis



Acacia floribunda



Lomandra filiformis



Poa labillardieri



Dianella revoluta



Microlaena stipoides



Lomandra longifolia



Lomandra multiflora



Waterhousea floribunda



Carpobrotus rossii 'Aussie Rambler'

Bio-Filtration Planting



Carex appressa



Schoenoplectus validus



Ficinia nodosa



Imperata cylindrica



Juncus pallidus



Themeda australis

Drawing Title:
Planting Schedule & Images

DWG No:

SSD-07

GEOSCAPES

LANDSCAPE ARCHITECTS

Suite 215, 284 Victoria Av, Chatswood NSW 2067 Ph. (02) 9411 1485
www.geoscapes.com.au
ABN 84 620 205 781 ACN 620 205 781

Architect:

Axis Architectural

Client:



Scale:	Date:	Job Number:	North:	Revision					FOR DEVELOPMENT APPROVAL	
				Rev	Date	Description			Drawn	Checked
Project:	Lot 9 Mcpherson Street Banksmeadow NSW 2019	180829	N/A	-	22.11.18	For SSD DRAFT			CC	BG
				A	11.01.19	For SSD			CC	BG
				B	21.01.19	For SSD			CC	BG
				C	10.07.20	For SSD			SW	BG