

Snack Brands Horizon Stage 2 - Industrial Development

685-649 Mamre Road, Orchard Hills, NSW 2748

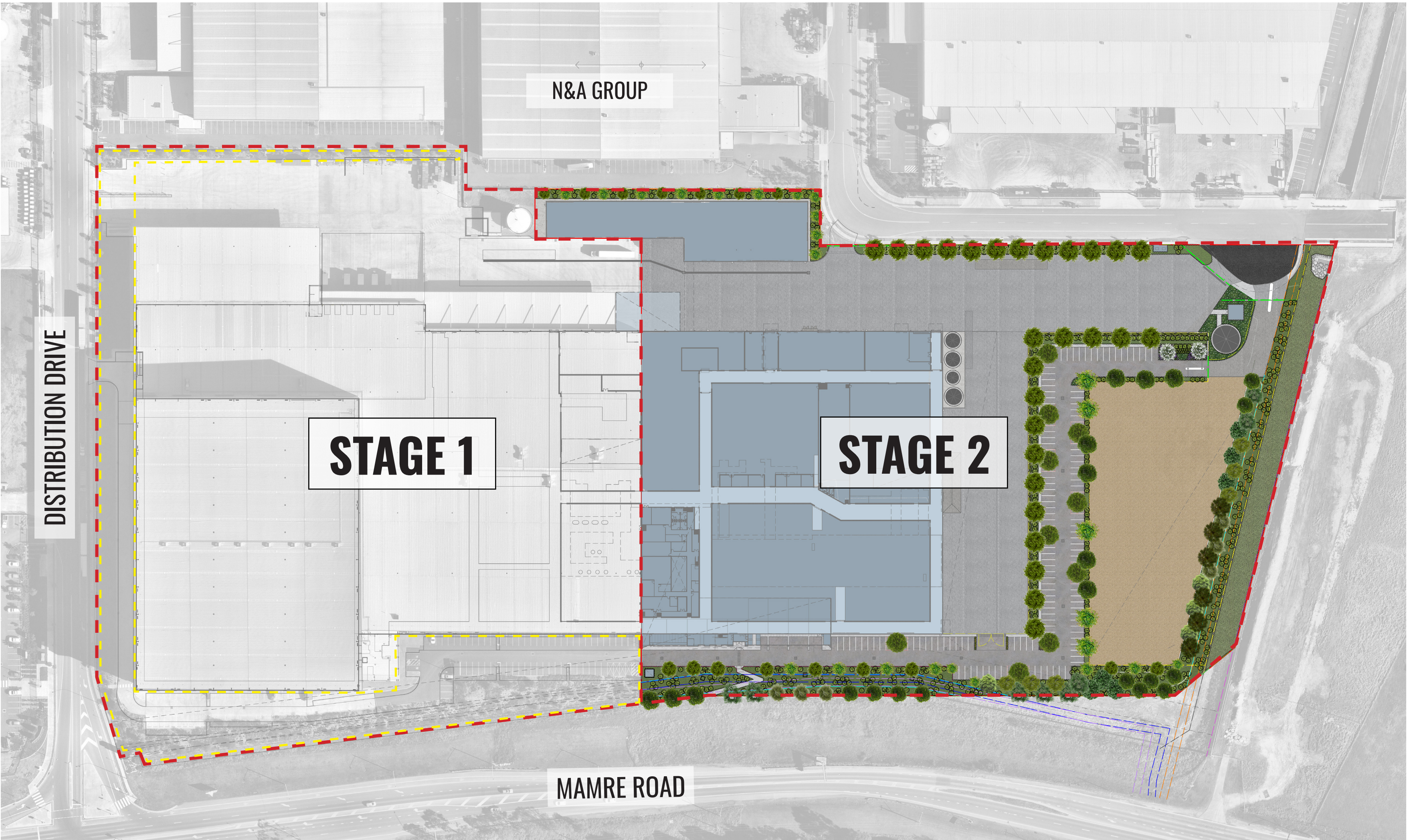
Landscape Documentation for State Significant Documentation Application



IMAGE TAKEN FROM NEARMAP 2021

Drawing Register

Dwg No.	Drawing Name
SSD-00	Landscape Cover Sheet
SSD-01	Landscape Plan
SSD-02	Landscape Detail Plan
SSD-03	Landscape Sections
SSD-04	Typical Landscape Details
SSD-05	Typical Detail & Specifications
SSD-06	Planting Schedule & Imagery



KEY SITE BOUNDARY EXISTING LANDSCAPE TO REMAIN AS APPROVED UNDER SSD 9429

 SITE PLAN
NTS

Drawing Title:
Landscape Cover Sheet
DWG No:


SSD-00

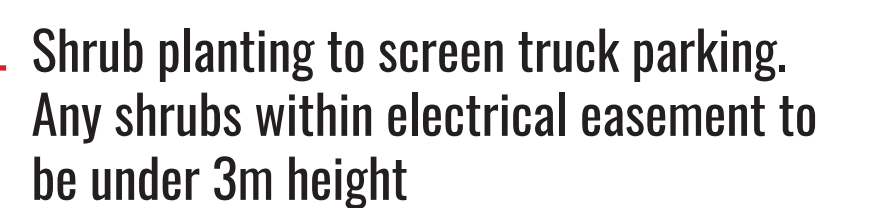
GEOSCAPES
LANDSCAPE ARCHITECTS
Suite 215, 284 Victoria Ave, Chatswood NSW 2067 Ph. (02) 9411 1485
www.geoscapes.com.au
ABN 84 620 205 781 ACN 620 205 781

Architect:
hla architects

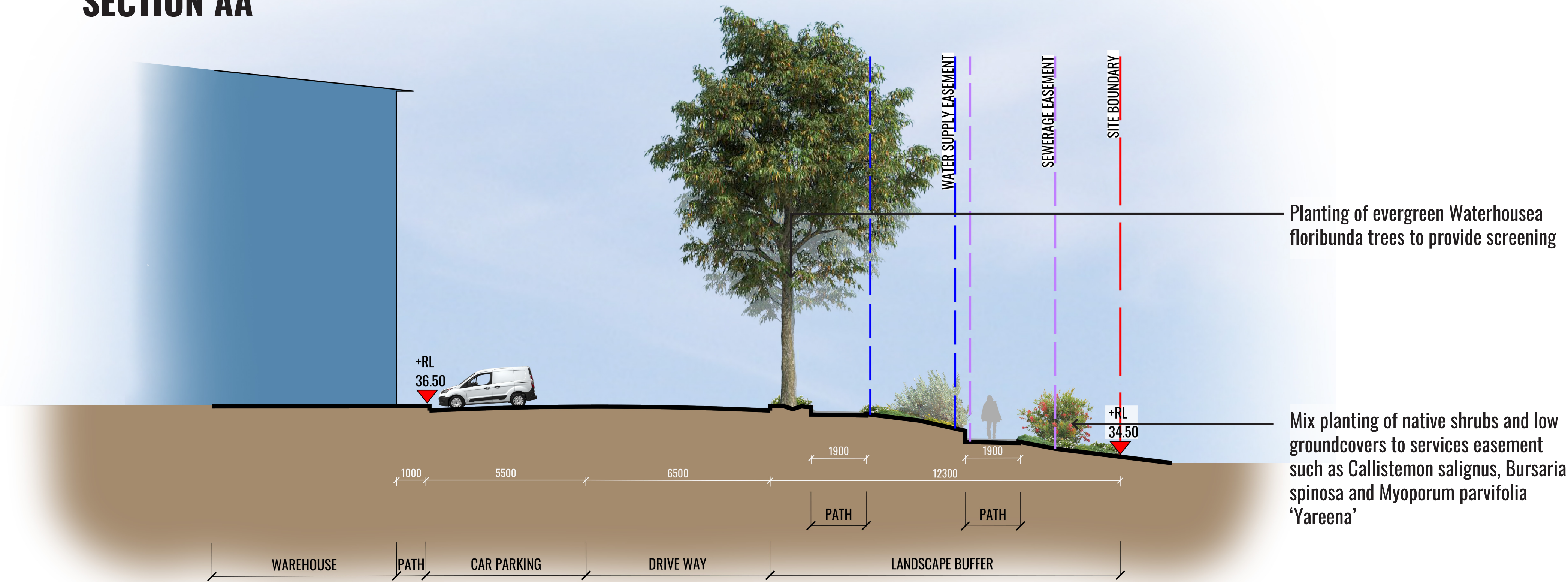
Project Manager:
TMX
invent tomorrow

Client:
snackbrands
AUSTRALIA

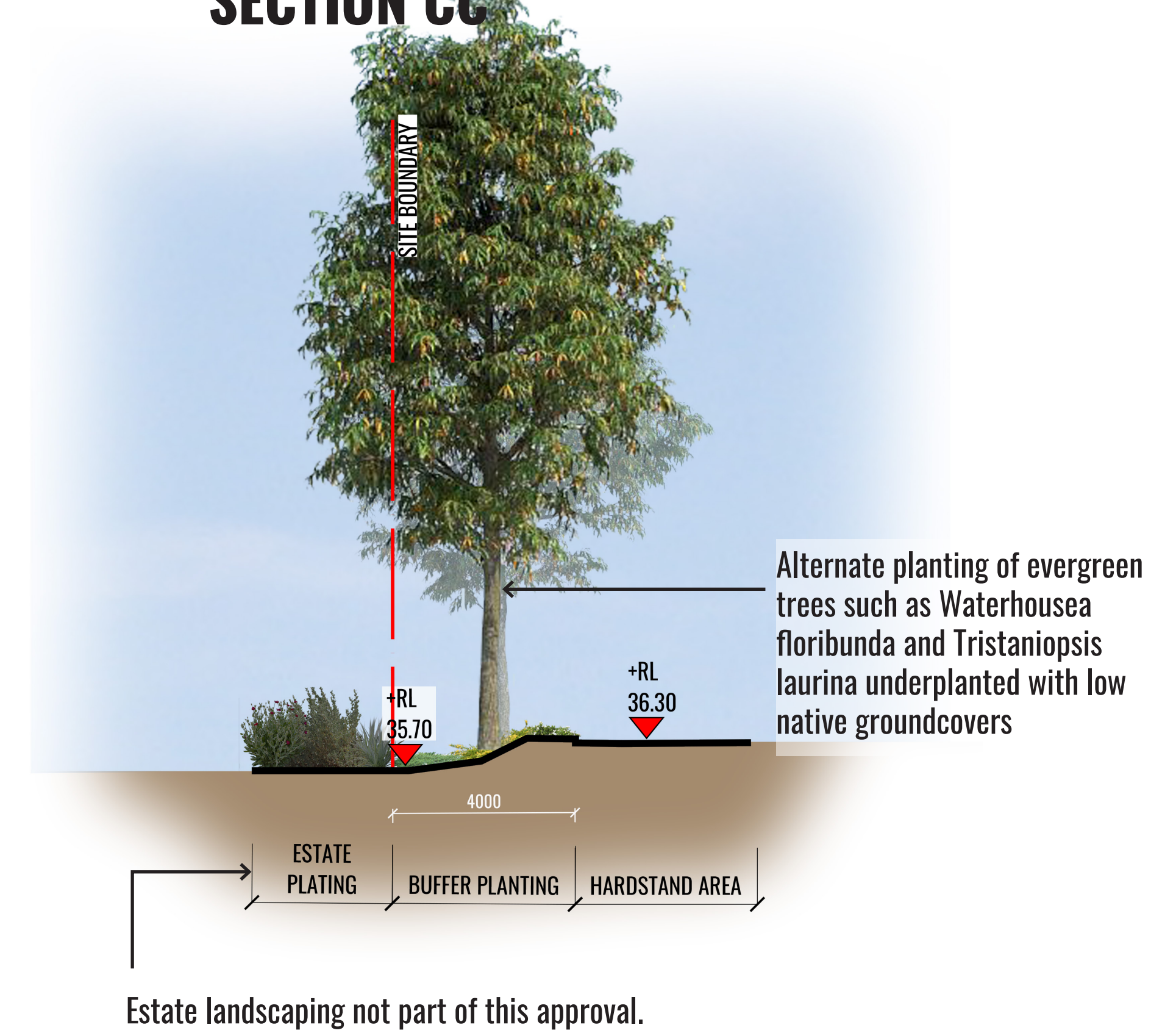
Scale:	Date:	Job Number:	North:	Revision					FOR SSD APPLICATION	
1:800 @ A1 1:1600 @ A3	27.10.21	210222		Rev	Date	Description	Drawn	Checked		
Project: Snack Brands Horizon 685-649 Mamre Road, Orchard Hills, NSW 2748				A	09.06.21	FOR SSD	KC	BG		
				B	22.06.21	FOR SSD	KC	BG		
				C	02.07.21	FOR SSD	KC	BG		
				D	27.10.21	FOR SSD - RTS	KC	BG		



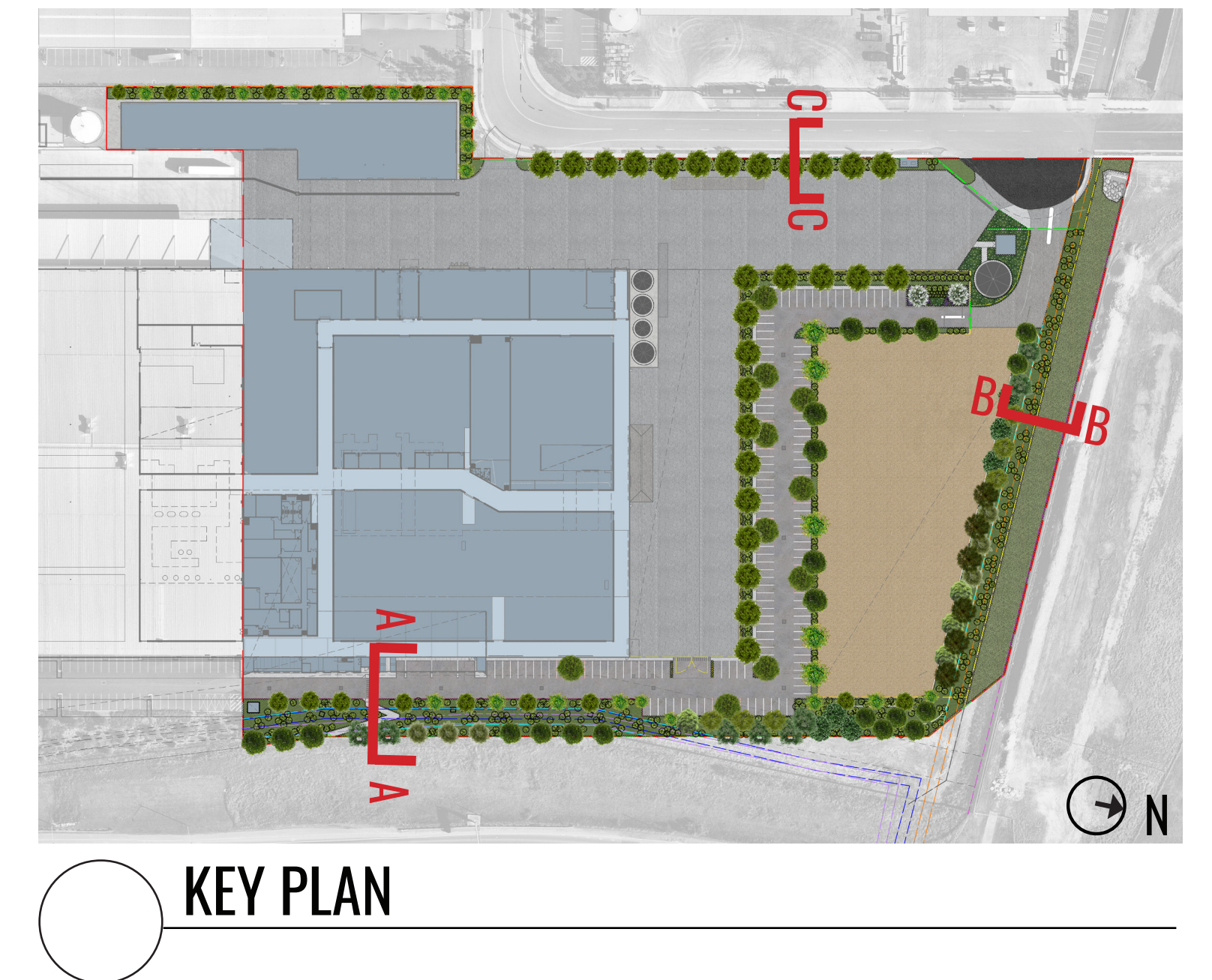
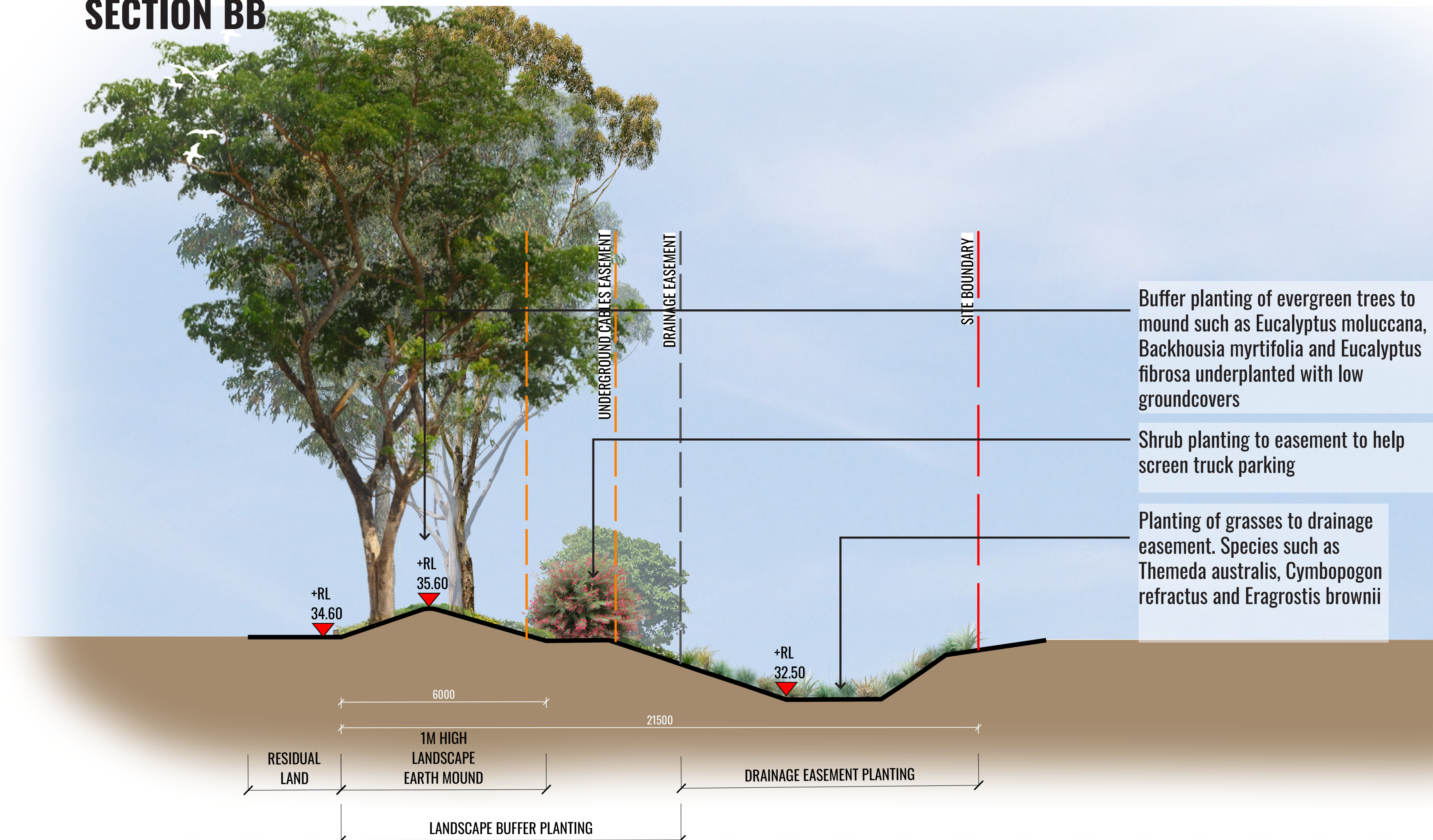
SECTION AA



SECTION CC



SECTION BB



Drawing Title:
Landscape Sections
DWG No:

SSD-03

GEO SCAPES
LANDSCAPE ARCHITECTS

Suite 215, 284 Victoria Ave, Chatswood NSW 2067 Ph. (02) 9411 1485
www.geoscapes.com.au
ABN 84 620 205 781 ACN 620 205 781

Architect:

hla architects

Project Manager:

The logo for TMX features the letters 'TMX' in a bold, sans-serif font. The 'T' and 'M' are orange, and the 'X' is blue. Below 'TMX' is the tagline 'invent tomorrow' in a smaller, orange, sans-serif font. The logo is set against a white background with a subtle shadow effect.

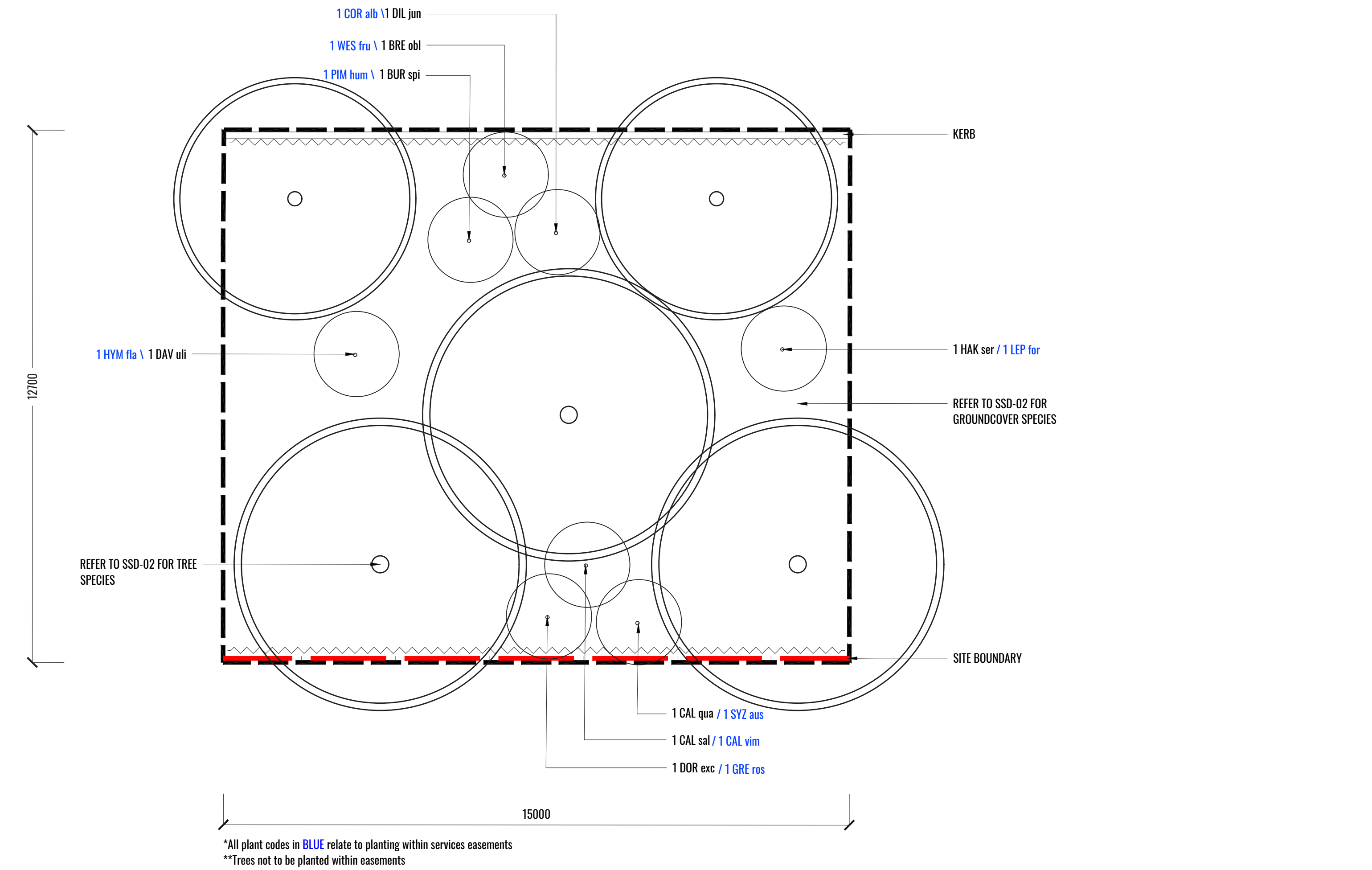
Client:

 snackbrands
AUSTRALIA

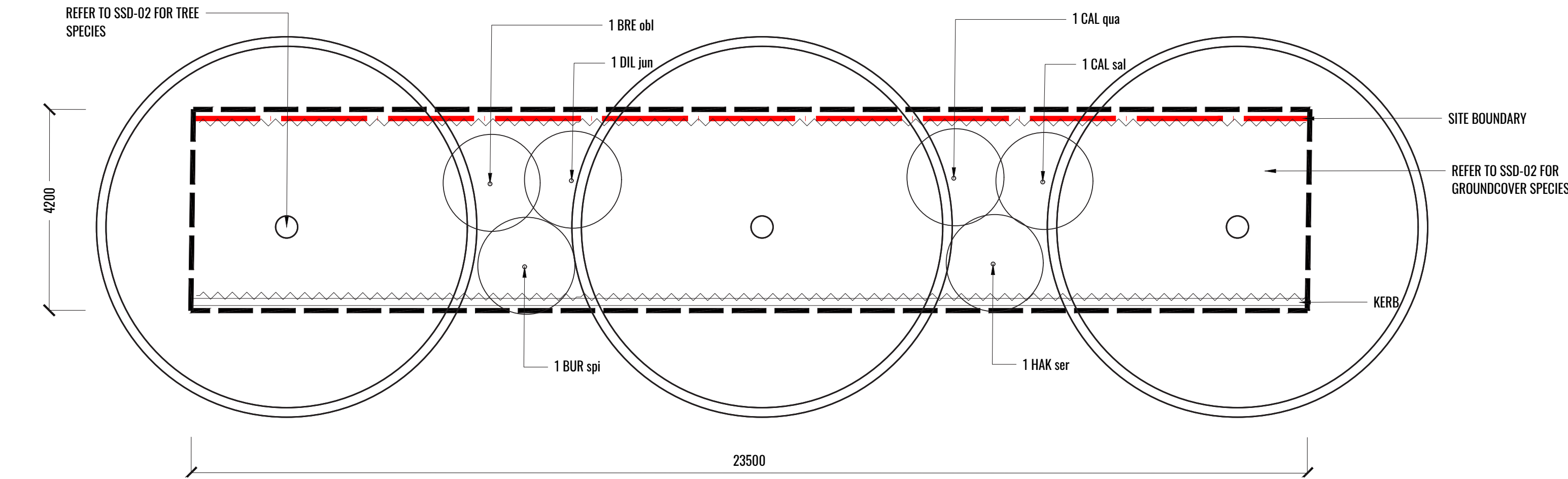
Scale:	Date:	Job Number:	North:	Revision					FOR SSD APPLICATION	
1:100 @ A1	27.10.21	210222	N/A	Rev	Date	Description	Drawn	Checked		
				A	09.06.21	FOR SSD	KC	BG		
Project:	Snack Brands Horizon 685-649 Mamre Road, Orchard Hills, NSW 2748			B	22.06.21	FOR SSD	KC	BG		
				C	02.07.21	FOR SSD	KC	BG		
				D	27.10.21	FOR SSD - RTS	KC	BG		

Revision		FOR SSD APPLICATION		
Rev	Date	Description	Drawn	Checked
A	09.06.21	FOR SSD	KC	BG
B	22.06.21	FOR SSD	KC	BG
C	02.07.21	FOR SSD	KC	BG
D	27.10.21	FOR SSD - RTS	KC	BG

TYPICAL LANDSCAPE DETAILS

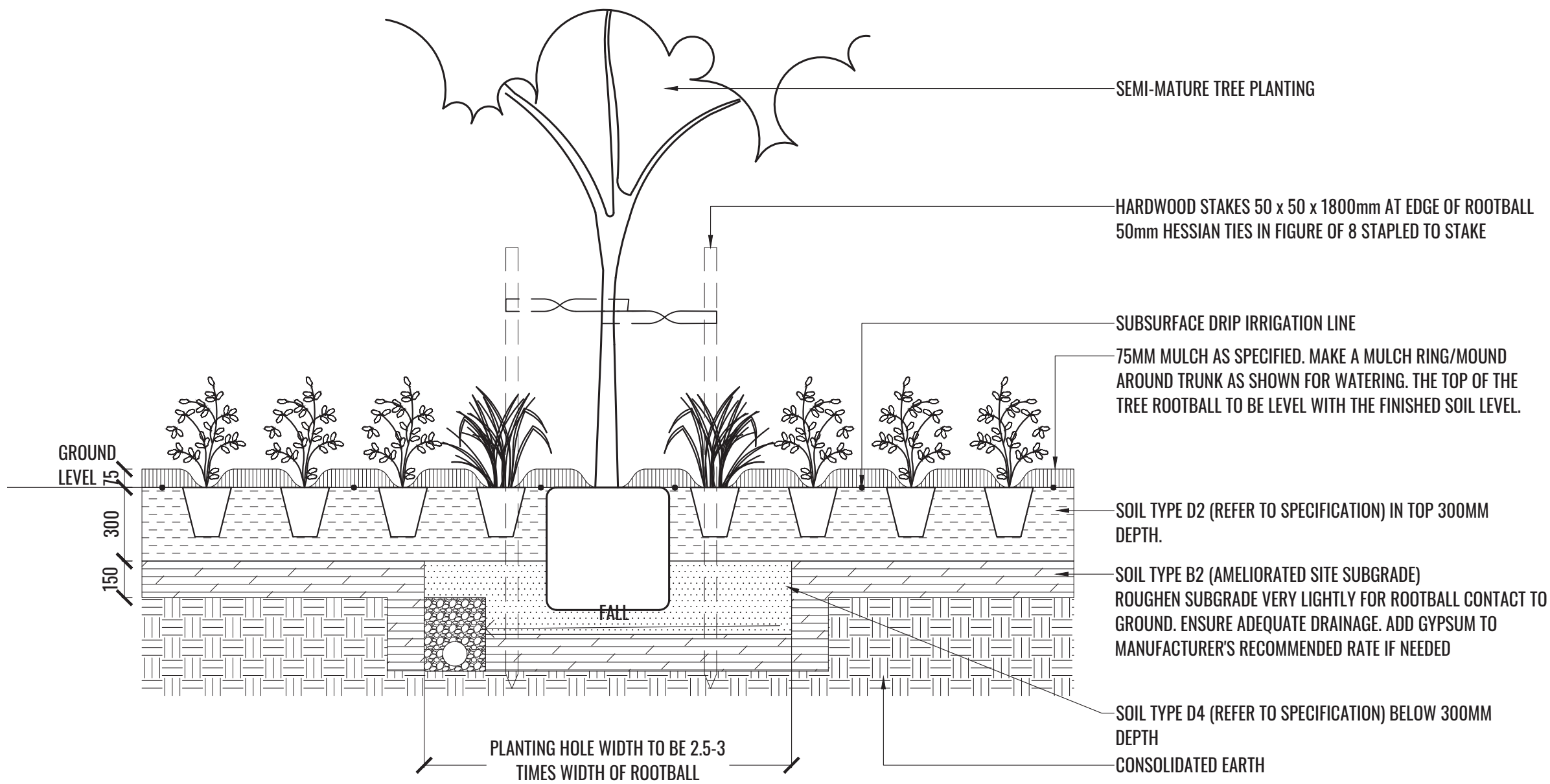


1A NORTH & EAST BUFFER ZONE DETAIL 12.7m x 15m
PLAN SCALE 1:75



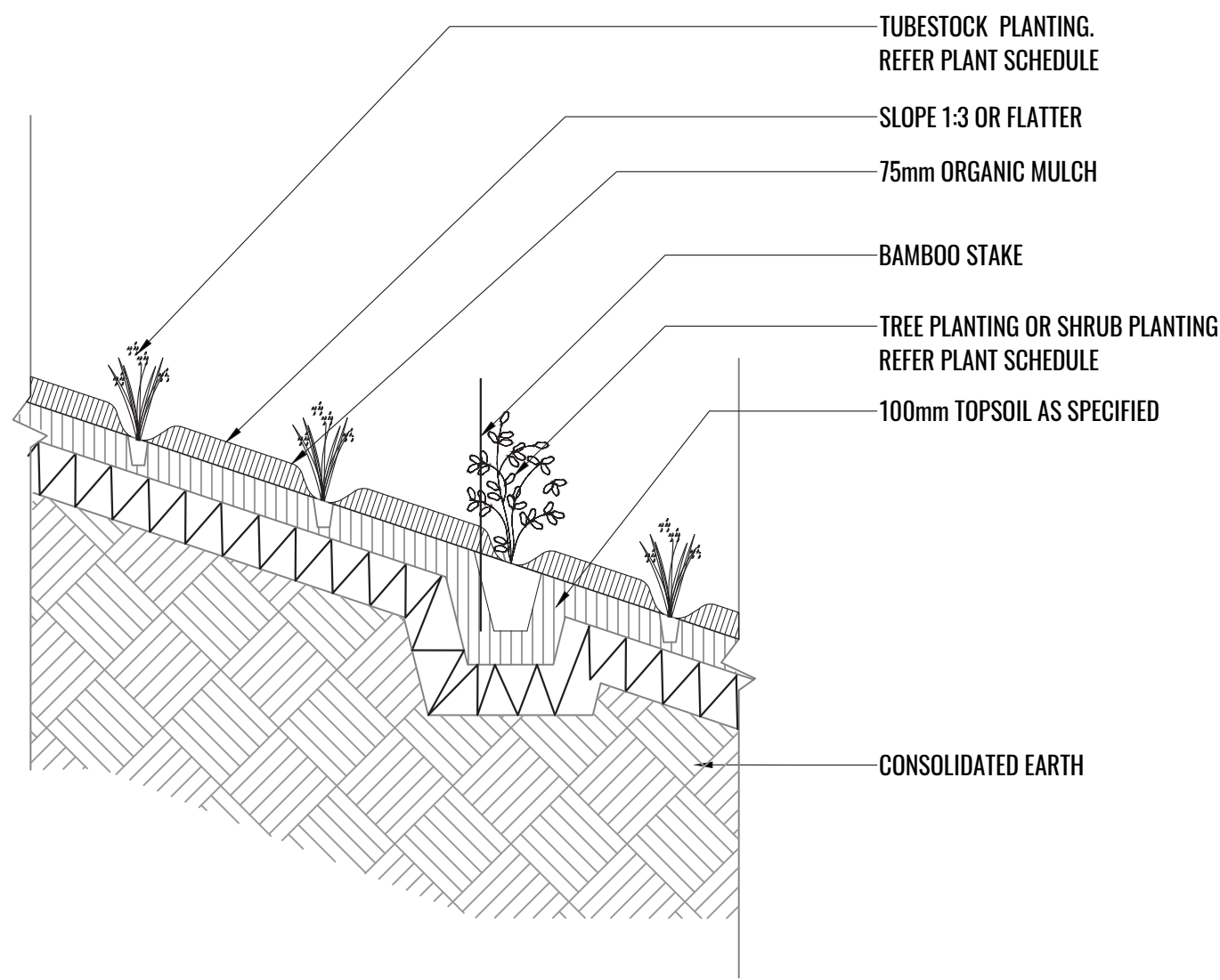
1B WEST BUFFER ZONE DETAIL 4.2m x 23.5m
PLAN SCALE 1:75

TREE/SHRUB SIZE AND QUALITY TO BE TO NATSPEC STANDARD. SPECIES IS TO BE AS PER PLAN AND PLANT SCHEDULE. ENSURE ONLY HEALTHY AND VIGOROUS, DISEASE FREE, WELL MAINTAINED PLANTS ARE USED.
TAKE CARE TO ENSURE FOLIAGE, BRANCHES, TRUNKS AND ROOT CROWNS ARE NOT DAMAGED BEFORE, DURING AND AFTER PLANTING.
ENSURE OPTIMUM MAINTENANCE AND ESTABLISHMENT OF TREES/SHRUBS OCCURS AS SOON AS THEY ARE AT SITE



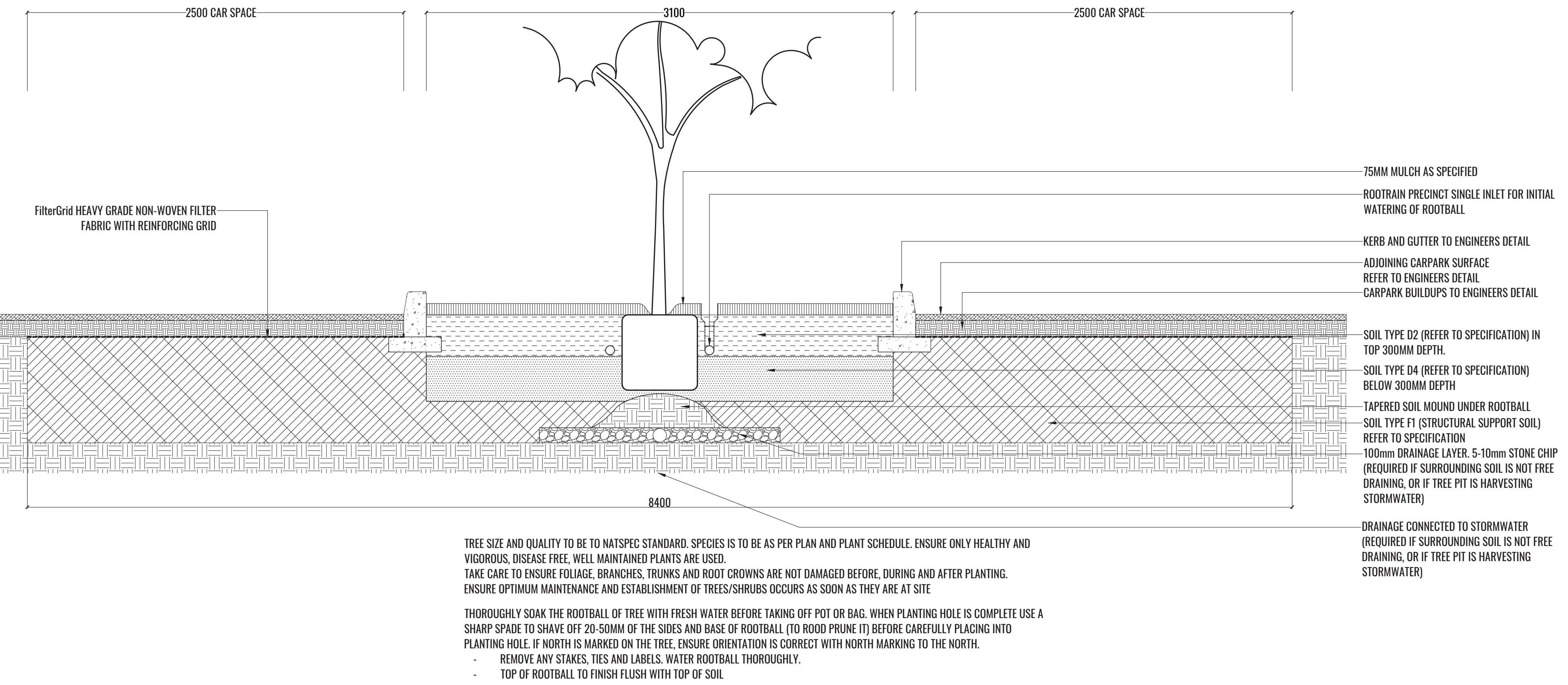
THOROUGHLY SOAK THE ROOTBALL OF TREE WITH FRESH WATER BEFORE TAKING OFF POT OR BAG. WHEN PLANTING HOLE IS COMPLETE USE A SHARP SPADE TO SHAVE OFF 20-50MM OF THE SIDES AND BASE OF ROOTBALL (TO ROOD PRUNE IT) BEFORE CAREFULLY PLACING INTO PLANTING HOLE. IF NORTH IS MARKED ON THE TREE, ENSURE ORIENTATION IS CORRECT WITH NORTH MARKING TO THE NORTH.
- REMOVE ANY STAKES, TIES AND LABELS. WATER ROOTBALL THOROUGHLY.
- TOP OF ROOTBALL TO FINISH FLUSH WITH TOP OF SOIL.

2 MASS PLANTING AND TREE DETAIL
TYPICAL SECTION SCALE 1:20



3 TUBESTOCK PLANTING ON GRADE 1 IN 3 OR FLATTER
TYPICAL SECTION SCALE 1:20

TYPICAL LANDSCAPE DETAIL



4

TYPICAL CAR PARK TREE PIT WITH STRUCTURAL SOIL

TYPICAL SECTION

SCALE 1:20

MAINTENANCE PLAN & TYPICAL SPECIFICATIONS

Maintenance shall mean the care and maintenance of the landscape works by accepted horticultural practice as rectifying any defects that become apparent in the landscape works under normal use. The landscape contractor shall attend the site on a **weekly basis** to maintain the landscape works commencing from practical completion.

- Rubbish Removal**

The Landscape Contractor shall undertake rubbish removal from the site on a **weekly basis** to ensure the site remains in tidy condition.
- Weed Eradication**

Weed growth that may occur in grassed, planted or mulched areas is to be removed using environmentally acceptable methods i.e. non-residual glyphosate herbicide (e.g. 'Roundup', applied in accordance with the manufacturer's direction.
- Tree Replacement**

Trees shall show signs of healthy vigorous growth and be free from disease and not exhibit signs of stress prior to handover to the client. Any trees or plant that die or fail to thrive, or are damaged or stolen will be replaced. Replacement material shall have the initial maintenance period extended in accordance with the landscape contract conditions. Trees and plant materials shall be equal to the minimum requirements of species specified and approved material delivered to site. Should the condition decline from the approved sample the Superintendent reserves the right to reject the tree / plants.
Frequency: as required.
- Stakes**

Adjust and/or replace stakes and ties where required. Remove staking and guying when instructed by the Superintendent
- Pruning**

Selective pruning may be required during the establishment period to promote a balanced canopy structure. These activities shall be carried out to the best horticultural and industry practice. All pruned material is to be removed from site.
- Mulched Surfaces**

All planter beds and garden areas shall have a minimum depth of 75mm organic mulch. All mulch is to be free of deleterious matter such as soil, weeds, sticks and should conform to AS 4454.
Mulched surfaces are to be kept clean and tidy and free of any deleterious material and foreign matter. Reinstate depths to a uniform level of 75mm with mulch as specified, mulch to be free of any wood material impregnated with CCA or similar toxic treatment. Top up mulch levels prior to handover to client & estate management.
- Watering**

Implement an appropriate hand watering regime in areas not irrigated in association with current watering programme to maintain plant health and vigour. The program shall reflect seasonal conditions and plant species.
Frequency: Weekly or as required.
- Soil In Natural Ground**

Non-Australian native garden beds to have soil installed consisting of 50% existing site topsoil and 50% new topsoil equal or equivalent to 'Organic Garden Mix' as supplied by Australian Native Landscapes. Australian native garden beds to have soil installed consisting of 50% existing site topsoil and 50% new topsoil equal or equivalent to 'Native Low 'P' Mix' as supplied by Australian Native Landscapes. Soil to conform to AS4419 refer to typical detail.
- Pest and Disease Control**

The Landscape Contractor shall spray for pests and disease infestations when the pest and fungal attack has been positively identified and when their populations have increased to a point that will become detrimental to plant growth. Apply all pesticides to manufacturer's directions.
Frequency: weekly inspection
- Fertilising**

Generally check for signs of nutrient deficiencies (yellowing of leaves, failure to thrive), and adapt fertiliser regime to suit. Fertiliser should be applied at the beginning and the end of the (summer) growing season.
- Irrigation**

A sub surface dripper style, electrically automated self timed irrigation system is recommended to be supplied to all garden bed areas. Regular checks are to be made to ensure continued successful operation. The Landscape Contractor shall be responsible for coordination and engagement of a specialist irrigation designer and installation contractor to design, supply and install an automatic subterranean drip irrigation system to all raised planter beds. The irrigation system will need to provide designated landscaped areas with enough water for vigorous healthy plant growth. As a general rule landscaped areas will need 20-25mm, species dependant, of water per week. The landscape Contractor will need to monitor natural rainfall using a rain switch in order to set irrigation flow rates accordingly on a monthly basis.
- Standards**

All grown or purchased plant stock must conform to all the conditions and requirements given in NATSPEC Guide: Specifying Trees. Soils to be in accordance with AS4419, mulching composts and conditioners to be in accordance with AS4454. Soils should conform to best practice specifications as listed in the Landscape Soils Handbook (Simon Leake & Elke Haegel 2017).

PLANT SCHEDULE

Code	Botanical Name	Common Name	Mature Height	Native	Spacing	Pot Size	Qty*
Trees							
ACA IMP	<i>Acacia implexa</i>	Hickory Wattle	12m	✓	As Shown	100L	6
BAC MYR	<i>Backhousia myrtifolia</i>	Hickory Wattle	12m	✓	As Shown	100L	6
CAS GLA	<i>Casuarina glauca</i>	Swamp Oak	10m	✓	As Shown	100L	8
COR MAC	<i>Corymbia maculata</i>	Spotted Gum	45m	✓	As Shown	100L	8
ELA EUM	<i>Elaeocarpus eumundii</i>	Eumundii Quandong	10m	✓	As Shown	100L	5
EUC CRE	<i>Eucalyptus crebra</i>	Narrow-Leaved Ironbark	18m	✓	As Shown	100L	6
EUC EUG	<i>Eucalyptus eugenoides</i>	Thin-Leaved Stringybark	30m	✓	As Shown	100L	6
EUC FIB	<i>Eucalyptus fibrosa</i>	Red Ironbark	35m	✓	As Shown	100L	5
EUC MOL	<i>Eucalyptus moluccana</i>	Grey Box	20m	✓	As Shown	100L	9
EUC TER	<i>Eucalyptus tereticornis</i>	Forest Red Gum	30m	✓	As Shown	100L	3
LAG NAT	<i>Lagerstroemia indica x fauriei 'Natchez'</i>	White Crepe Myrtle	5m		As Shown	100L	2
MEL BRA	<i>Melaleuca bracteata</i>	Black Teatree	8m	✓	As Shown	100L	7
PIT REV	<i>Pittosporum revolutum</i>	Rough Fruit Pittosporum	3m	✓	As Shown	100L	7
SYN GLO	<i>Syncarpia glomulifera</i>	Turperntin Tree	25m	✓	As Shown	100L	10
SYZ LEU	<i>Syzygium leuhmannii</i>	Lilly Pilly	6m	✓	As Shown	100L	6
TRI LAU	<i>Tristaniaopsis laurina</i>	Water Gum	8m	✓	As Shown	100L	19
WAT FLO	<i>Waterhousea floribunda</i>	Weeping Lily Pilly	15m	✓	As Shown	100L	23
Shrubs							
ACM smi	<i>Acmena smithii</i>	Lilly Pilly	3-5m	✓	1.25m Ctrs	200MM	158
BRE obl	<i>Breynia oblongifolia</i>	Common Breynia	3m	✓	As Shown	200MM	20
BUR spi	<i>Bursaria spinosa</i>	Boxthorn	4m	✓	As Shown	200MM	20
CAL vim	<i>Callistemon viminalis 'Little John'</i>	Little John Bottlebrush	0.8m	✓	As Shown	200MM	20
CAL sal	<i>Callistemon salignus</i>	Willow Bottlebrush	10m	✓	As Shown	200MM	20
CAL qua	<i>Calothamnus quadrifidus</i>	One-sided Bottlebrush	1.5-2.5m	✓	As Shown	200MM	24
COR alb	<i>Correa alba</i>	Native Fuschia	1.5m	✓	As Shown	200MM	16
DAV uli	<i>Daviesia ulicifolia</i>	Gorse Bitter-Pea	2m	✓	As Shown	200MM	9
DIL jun	<i>Dillwynia juniperina</i>	Prickly Parrot Pea	2.5m	✓	As Shown	200MM	20
DOR exc	<i>Doryanthes excelsa</i>	Gymea Lily	3m	✓	As Shown	200MM	19
GRE ros	<i>Grevillea rosmarinifolia 'Crimson Villea' [H16]</i>	Crimson Villea Grevillea	0.8m	✓	As Shown	200MM	19
HAK ser	<i>Hakea sericea</i>	Hakea Sericea	5m	✓	As Shown	200MM	20
HYM fla	<i>Hymenosporum flavum 'Lushious'</i>	Native Frangipani	0.4-0.6m	✓	As Shown	200MM	20
LEP for	<i>Leptospermum laevigatum 'Fore Shore'</i>	Tea Tree	0.3-0.5m	✓	As Shown	200MM	19
PIM hum	<i>Pimelea humilis</i>	Dwarf Rice Flower	0.5m	✓	As Shown	200MM	15
WES fru	<i>Westringia fruticosa 'Aussie Box' [WES08]</i>	Native Rosemary	0.7-0.95m	✓	As Shown	200MM	19
SYZ aus	<i>Syzygium australe 'Tiny Trev'</i>	Lilly Pilly	0.7-1m	✓	As Shown	200MM	17
Groundcovers							
AJU rep	<i>Ajuga reptans 'Burgundy Glow'</i>	Bugle Herb	0.2m	✓	3/m2	140mm	301
BRA mul	<i>Brachyscome multifida 'Break O Day'</i>	Rock Daisy	0.2-3m	✓	3/m2	140mm	405
BRU aus	<i>Brunoniella australis</i>	Blue Trumpet	0.2m	✓	3/m2	Tubestock	2207
CAR ros	<i>Carpobrotus glauescens 'White Hot'</i>	Native Pigface	0.3m	✓	3/m2	140mm	652
DAM lin	<i>Dampiera linearis 'Cobalt Mound'</i>	Dampiera	0.3m	✓	3/m2	140mm	405
DIC rep	<i>Dichondra repens</i>	Kidney Plant	0.1m	✓	3/m2	Tubestock	2207
ERE blu	<i>Eremophila 'Blue Horizon'</i>	Emu Bush	0.25m	✓	3/m2	140mm	652
GOO hed	<i>Goodenia hederacea</i>	Violet-Leaved Goodenia	0.3m	✓	3/m2	Tubestock	2278
HIB dif	<i>Hibbertia diffusa</i>	Wedge Guinea Flower	0.2m	✓	3/m2	Tubestock	2454
MYO par	<i>Myoporum parvifolia 'Yareena' [PARV01]</i>	Creeping Boobialla	0.1m	✓	3/m2	Tubestock	2599
SCA aem	<i>Scaevola aemula</i>	Fan Flower	0.4m	✓	3/m2	140mm	405
VIO hed	<i>Viola hederacea</i>	Ivy-leaved Violet	0.3m	✓	3/m2	Tubestock	2122
WES low	<i>Westringia fruticosa 'Low Horizon'™</i>	Low Horizon Westringia	0.3m	✓	3/m2	140mm	652
Drainage Easement Planting							
CYM ref	<i>Cymbopogon refractus</i>	Barbed Wire Grass	1m	✓	6/m2	Tubestock	1903
ECH cae	<i>Echinopogon caespitosus</i>	Bushy Hedgehog-Grass	1.5m	✓	6/m2	Tubestock	1903
ERA bro	<i>Eragrostis brownii</i>	Common Lovegrass	3m	✓	6/m2	Tubestock	1903
MIC sti	<i>Microlaena stipoides</i>	Weeping Grass	0.7m	✓	6/m2	Tubestock	1903
THE aus	<i>Themeda australis</i>	Kangaroo Grass	0.8m	✓	6/m2	Tubestock	1903
* Final numbers to be confirmed at GC satge							

PLANT IMAGES



Lagerstroemia indica x fauriei 'Natchez'



Backhousia myrtifolia



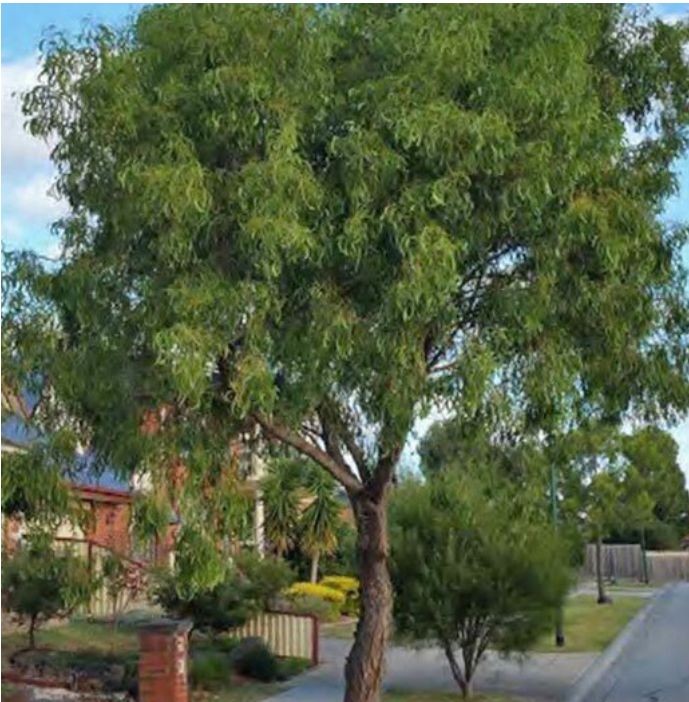
Eucalyptus crebra



Eucalyptus moluccana



Syzygium leuhmannii



Acacia implexa



Correa alba



Doryanthes excelsa



Callistemon salignus



Hakea sericea



Dichondra repens



Brunoniella australis



Goodenia hedeacea



Myoporum parvifolia 'Yareena' [PARV01]



Viola hederacea



Themeda australis



Eragrostis brownii



Microlaena stipoides



Scaevola aemula



Westringia fruticosa 'Low Horizon'

Drawing Title:

Planting Schedule & Imagery

DWG No:

SSD-06

GEOSCAPHES
LANDSCAPE ARCHITECTS

Suite 215, 284 Victoria Ave, Chatswood NSW 2067 Ph. (02) 9411 1485
www.geoscapes.com.au
ABN 84 620 205 781 ACN 620 205 781

Architect:



Project Manager:



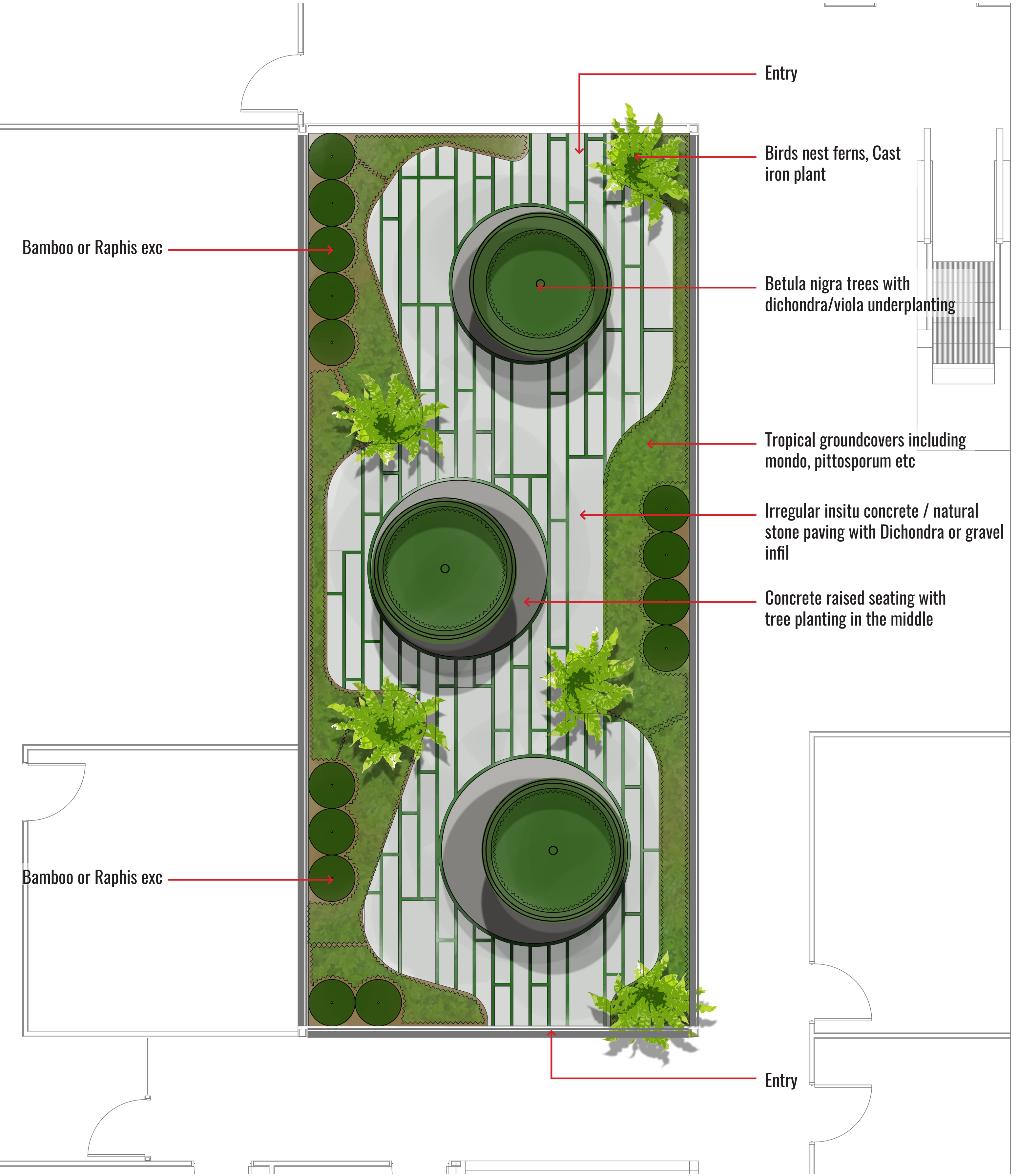
Client:



Scale:	Date:	Job Number:	North:	Revision					FOR SSD APPLICATION	
N/A	27.10.21	210222	N/A	Rev	Date	Description	Drawn	Checked		
Project:				A	09.06.21	FOR SSD	KC	BG		
				B	22.06.21	FOR SSD	KC	BG		
				C	02.07.21	FOR SSD	KC	BG		
				D	27.10.21	FOR SSD - RTS	KC	BG		

Snack Brands Horizon
685-649 Mamre Road, Orchard Hills, NSW 2748

Plan



Images



Drawing Title:
Courtyard Concept
DWG No:

SK-01

GEOSCAPES
LANDSCAPE ARCHITECTS
Suite 215, 284 Victoria Ave, Chatswood NSW 2067 Ph. (02) 9411 1485
www.geoscapes.com.au
ABN 84 620 205 781 ACN 620 205 781

Architect:
hla architects

Project Manager:
TMX
Invent tomorrow

Client:
snackbrands
AUSTRALIA

Scale:
1:40 @ A1
1:80 @ A3
Project:

Date:
16.07.21

Job Number:
210222

North:
⬆

Snack Brands Horizon
685-649 Mamre Road, Orchard Hills, NSW 2748

Revision			CONCEPT FOR TENDER	
Rev	Date	Description	Drawn	Checked
-	09.07.21	FOR REVIEW	KC	BG
A	16.07.21	FOR TENDER	KC	BG