

NSW Department of Education

Bungendore High School (SSD-1439420)
Analysis of Submissions from Public and
Organisations



March 8, 2022

Prepared by: Micromex Research



Education



Table of Contents

Background & Methodology	3
Background	4
Methodology	5
Key Findings	7
Key Findings	8
Analysis.....	10
Submissions Received	11
Support by Submitter Type.....	12
Submissions by Location.....	13
Support by Location	14
Main Concerns – Overview	17
Project Issues (7.1)	19
Project Issues (7.1) – Location	20
Project Issues (7.1.2) – Site Size and School Capacity	21
Procedural Matters (7.2)	22
Procedural Matters (7.2) – Consistency with SEARs	23
Economic, Environmental and Social Impacts (7.3)	25
Justification and Evaluation of Project (7.4)	27
Issues Beyond the Project Scope (7.5)	28
Support for the Proposal (8.0)	30
Reasons for Supporting the Proposal (8.0)	31
Final Comments	34
Appendix A: Submissions Register	36
Appendix B: Code Frame Used for Analysing Submissions	47

f:\micromex business\nsw government\nsw education\bungendore high school_november 2021\4. report\report - nsw department of education - bungendore high school submissions report ssd-14394209 - 2022-01-28_Final.docx



Background & Methodology



Education



Background

The Department of Education lodged a State Significant Development Application (SSDA No 14394209) for a new high school in Bungendore with the Department of Planning, Industry and Environment (DPIE). The application was submitted on 10 September 2021.

The application was exhibited from Monday 20 September 2021 until Monday 18 October 2021.

During this process, 326 submissions were received (although one has been excluded – explained overleaf), either online via the Department of Planning, Industry and Environment (DPIE) Major Projects Website (<https://www.planningportal.nsw.gov.au/major-projects/project/41186>) or via post. Submissions received via post were then manually uploaded to the Planning portal. These 326 submissions include:

- 312 public submissions, broken down as:
 - 239 objections
 - 70 supports
 - 3 comments
- 8 organisation submissions (eg Save Bungendore Park)
- 5 government agency submissions (e.g. TfNSW)
- Queanbeyan Palerang Regional Council submission (objects)

When preparing a submission, participants had the option of withholding their personal information and remain anonymous (this is explained further within the methodology on the next page).

The purpose of this report is to serve as an Appendix within Mecone's Response to Submissions Report. It provides a high-level analysis of submissions received but is not intended to cover each of the issues identified in detail as these will be covered in the main Response to Submissions Report.

Methodology

Objectives

- Understand key concerns regarding the Bungendore High School proposal as discussed in submissions made by participants, i.e. members of the public and organisations
- Explore the main reasons for objecting or supporting the development proposal
- Identify aspects of the proposal that may not have been adequately addressed and require further exploration or clarification

Duplicate Submissions

- 1 submission was identified as a duplicate submission where the individual explicitly stated that they weren't sure if their previous submission had been received and thus, they were submitting the same response again. This duplicate submission has not been included for further analysis.

Multiple Submissions

- 7 participants were identified as completing multiple submissions (3 participants completed 2 submissions and 4 participants completed 3 submissions) – not duplicates although some of the same themes may have been raised across their submissions. In order to correctly report all submissions received, these have been kept as separate submissions. Therefore, if a participant has mentioned the same issue across multiple submissions, then this will be counted multiple times.
- Note: the count of 7 multiple submissions includes 1 participant (name withheld) who specifically mentioned a previous submission. However, in reality, the number of multiple submissions may be higher given that participants were able to withhold their personal information when submitting a response.
- Furthermore, a number of participants provided both comments and an attachment on the DPIE Planning Portal. Any concerns raised multiple times across the message and attachment have only been counted once.
- One participant completed a second submission, but mentioned that the subsequent submission was on behalf of someone else (and provided their name), thus this has been treated as a separate submission.

Excluded From Analysis

- The responses analysed in this report only include those from individuals and organisations. Responses from Government Agencies and the Public Authority (Queanbeyan-Palerang Regional Council or QPRC) have been dealt with in the main section of the Response to Submissions Report.

Methodology

Counts in Summary...

The final count of **unique submissions** analysed in this Report is 319 (made up of 311 Public submissions and 8 from Organisations). Note: the number of **unique individuals/groups** appears to be 308 (i.e.: excluding the 11 multiple submissions discussed on the previous page), though as mentioned, in reality this may be lower due to the possibility of some anonymous submissions being made by the same individual.

Percentages

Note: In some cases, percentages may not add to 100% due to rounding.

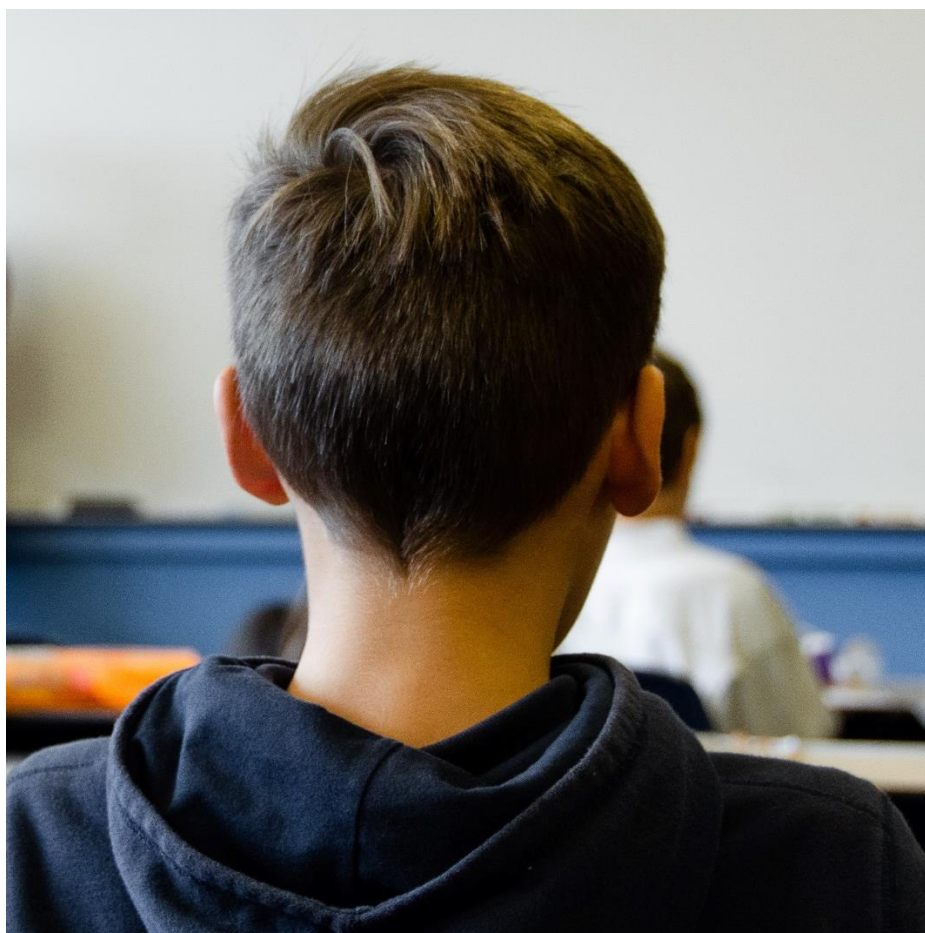
When analysing themes within categories, the percentages do not add to 100% since the majority of submissions mentioned more than one issue.

Submissions Register

A full list of submissions received and the themes that have been identified within each submission has been included in Appendix A:

- Any concerns or issues raised within a submission (regardless of whether the participant indicated that overall they objected to or supported the proposal or simply left a comment) was recorded with a code beginning with a '7' e.g., 7.1.1 Site location.
- If submissions generally supported a high school in Bungendore but not the current proposal as it stands, this was coded as 'I support a new high school but have reservations'. This and any other positive code is recorded as 8.0 in the submissions register.

The full code frame used – which was developed by Mecone – is provided in Appendix B.



Key Findings



Education



Key Findings

As part of the online submission process, participants were asked to indicate if – overall – they supported or opposed the Proposal.

Overall:

- 76% of the 319 submissions analysed in this Report objected to the current proposal (based on the support/object/comment response button).
- However, it is worth noting that a nett subtotal of 58% of participants made at least one supportive comment, suggesting there is some ambivalence.
- In fact, a number of objections specifically noted that they do not object to a high school in Bungendore, but do object to the current proposal – across all submissions (object, support or comment), 39% indicated support for a high school in Bungendore generally, but had some level of reservations.

The main concern among those who objected is the site location, which has a variety of restrictions/limitations and a significant impact on both heritage and quality of life in the eyes of residents. There was also a perception of limited opportunity to provide feedback earlier on the location (i.e: there was a sense that consultation was limited to input on design principles).

The overall sentiment of the objections is that the Proposal reflects a poor understanding of the Bungendore area, and dismisses heritage value and cultural significance, which some participants feel stems from a lack of meaningful consultation opportunities and transparency in the planning process.

The proposed site location is said to have considerable impact on residents' access to green space/open space, way of life, community facilities and appreciation of the heritage of Bungendore. Furthermore, the Environmental Impact Statement (EIS) does not sufficiently address how and why the site has been considered for a high school, with questions as to the need and justification of the development. For some participants, the impact of surrounding developments such as Bungendore Preschool, Bungendore Public School, Abbeyfield and surrounding housing developments appear not to have been adequately addressed nor have the requirements for future capacity.

There are also concerns about the dismissal of alternative sites with no discussion or clear reasoning as to how conclusions have been reached in the EIS. The site selection process itself is of key concern to the community as it is said to be rushed, flawed and lack transparency. The proposed high school appears to be inconsistent with various government guidelines, planning policies, legislation and strategic plans without adequately addressing the reasons for this in the EIS.

Apart from social, environmental and economic impacts, several legal issues were also raised, which as highlighted in a number of submissions, may impact the timing and/or feasibility of the proposal. These include Crown Land and the compulsory acquisition process, road closures and Aboriginal land claims. There is also the issue of lead contamination along the railway corridor which requires further testing/evaluation and is likely to impact on timing and construction.

Key Findings

Reasons for supporting the proposal include addressing the need for a high school in Bungendore, and the high school being a positive addition to the community/regional centre. More specifically, reasons for supporting the site location included central location and safety and accessibility as well as the suggestion that there would be limited impact to recreation space and community facilities.



Analysis

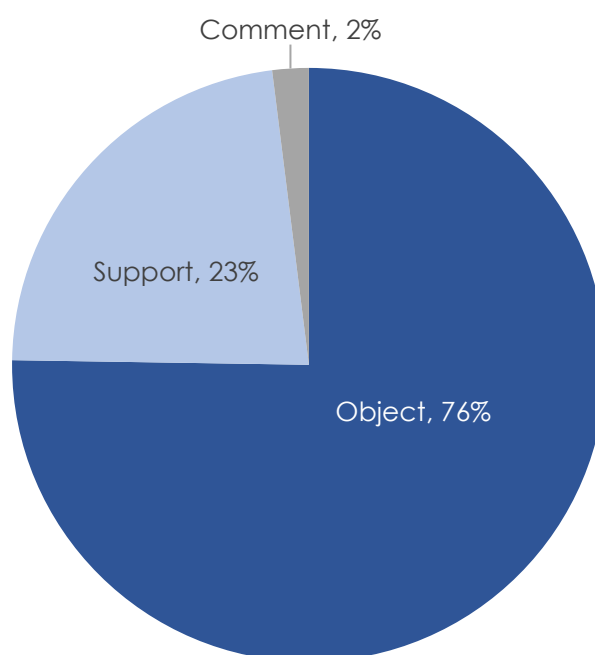


Education



Submissions Received

Overall, 76% of the Public and Organisation submissions were objections to the proposal for Bungendore High School, 23% were in support of the proposal and 2% submitted comments rather than selecting a discrete object/support response. Those who made a submission anonymously were more likely to support the proposal (35% vs 23% for total submissions).



N=319 submissions

Table: Classification of Submissions (Total)

Classification of Submission	N=319
Object	76%
Support	23%
Comments	2%

Table: Classification of Submissions (Anonymous Submitters)

Classification of Submission	N=110
Object	64%
Support	35%
Comments	1%

Support by Submitter Type

Community organisations that made a submission showed mixed support. Half (50%) of the 8 community organisations object to the proposal, while 2 support the proposal and 2 made comments. Organisations and their classification are shown in the table below.

Chart: Support by Public and Organisation Submission Type

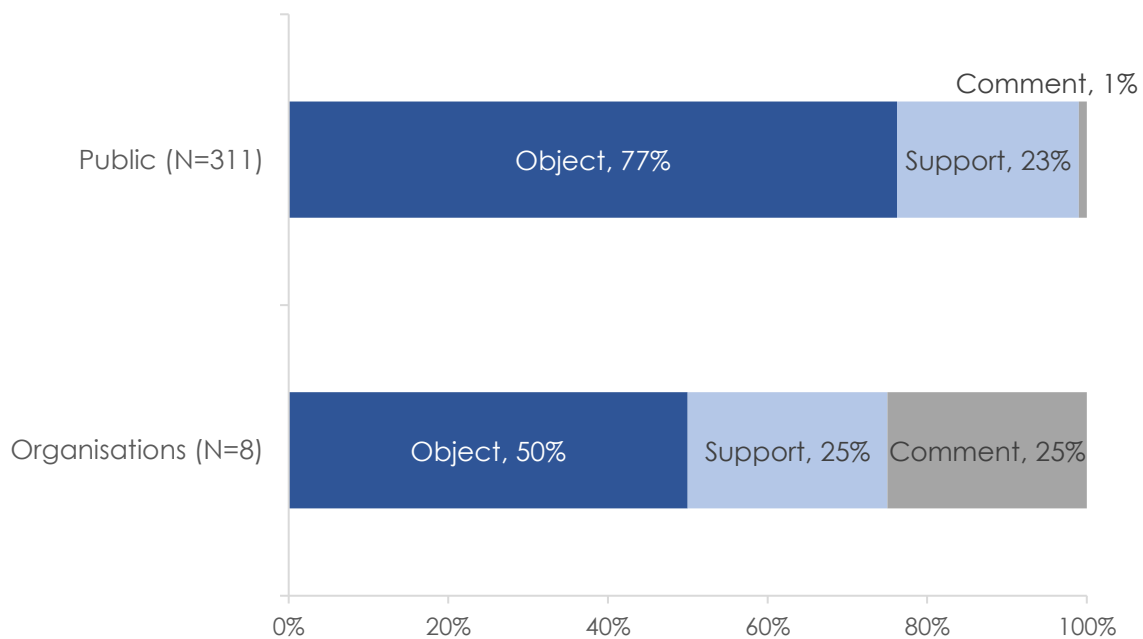


Table: Name of Organisations and their Submission Classification (N=8)

Organisation	Classification
Braidwood Greens	Object
Crown Land Our Land	Object
Design+Planning	Object
Save Bungendore Park Inc	Object
Bungendore Chamber of Commerce and Industry	Support
Bungendore High School Action Group	Support
Bungendore War Memorial Committee	Comment
Bungendore Youth Orchestra	Comment

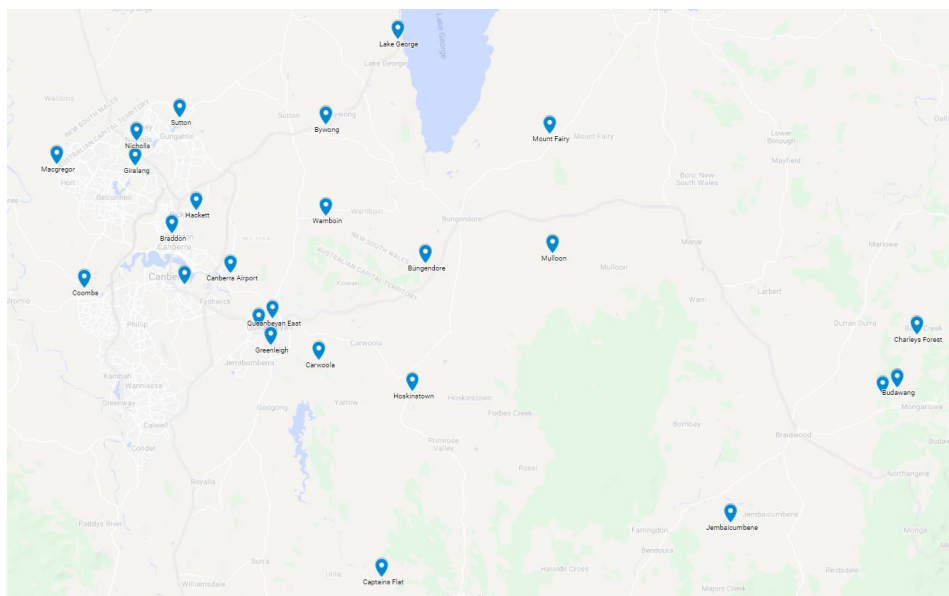
Submissions by Location

250 out of 319 submissions analysed (78%) were from the suburb of Bungendore. Other submissions were received from residents in nearby suburbs, previous residents and visitors (as stated in the submissions). Several submissions came from residents in nearby areas such as Bywong, Wamboin, Queanbeyan/Queanbeyan East, Hoskinstown and Mulloon. Other submissions mainly came from NSW and ACT, though 5 submissions came from Queensland, 1 from Victoria and 1 from New Zealand.

Table: Number of Submissions by Location (N=319)

Suburb	Count	Suburb	Count
Bungendore, NSW	250	Giralang, ACT	1
Bywong, NSW	11	Greenacre, NSW	1
Wamboin, NSW	11	Greenleigh, NSW	1
Queanbeyan East, NSW	6	Hackett, ACT	1
Hoskinstown, NSW	4	Jembaicumbene, NSW	1
Lake George, NSW	3	Kingston, ACT	1
Charleys Forest, NSW	2	Macgregor, ACT	1
Fairy Meadow, NSW	2	Mongarlowe, NSW	1
Mount Fairy, NSW	2	Moruya, NSW	1
North Ward, QLD	2	Mulloon, NSW	1
Alexandra Hills, QLD	1	Nicholls, ACT	1
Braddon, ACT	1	Queanbeyan, NSW	1
Budawang, NSW	1	Richmond, VIC	1
Canberra Airport, ACT	1	Riverhills, QLD	1
Captains Flat, NSW	1	Sutton, NSW	1
Carwoola, NSW	1	Sydney, NSW	1
Coombs, ACT	1	Unanderra, NSW	1
Eatons Hill, QLD	1	Upper Moutere, NZ	1

Image: Map of Submissions from Surrounding Suburbs



Support by Location

72% of submissions from Bungendore residents objected to the proposal and 26% were in support. Submissions from outside of Bungendore were more likely to be objections (88%), as they are likely to be impacted by the loss of green space/recreational area when visiting and less likely to directly benefit from the provision of a high school in Bungendore. This is explored further over the next few pages.

Chart: Support by Location

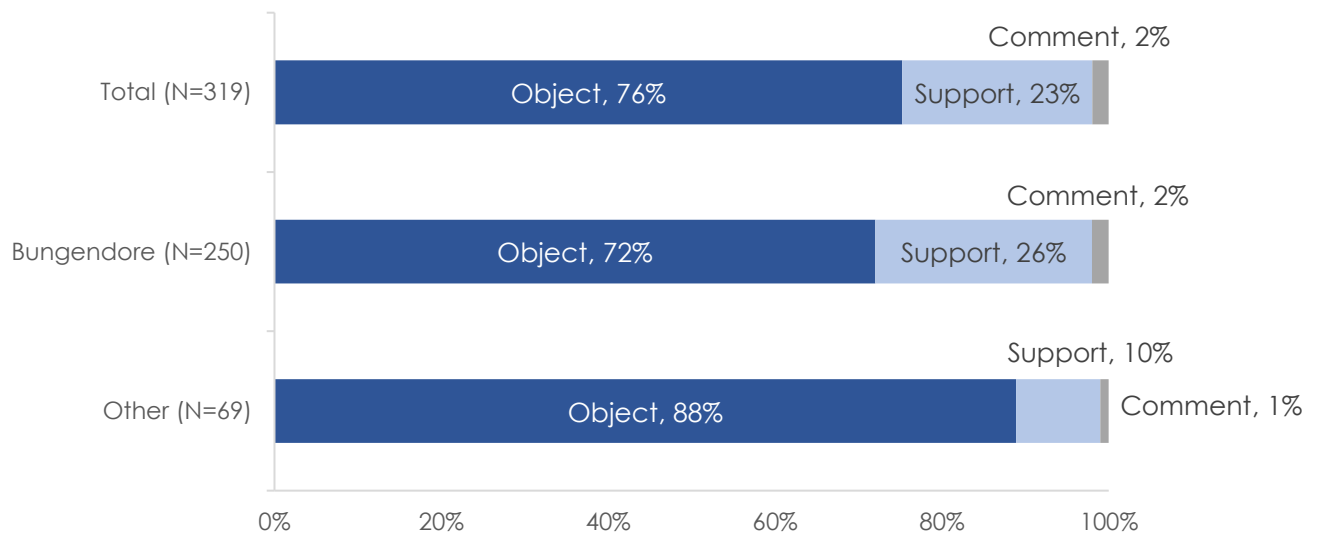


Table: Objections by Location (N=242)

Suburb	Count	Suburb	Count
Bungendore, NSW	181	Giralang, ACT	1
Wamboin, NSW	11	Greenleigh, NSW	1
Bywong, NSW	10	Hackett, ACT	1
Queanbeyan East, NSW	5	Jembaicumbene, NSW	1
Hoskinstown, NSW	4	Kingston, ACT	1
Charleys Forest, NSW	2	Macgregor, ACT	1
Fairy Meadow, NSW	2	Mongarlowe, NSW	1
Mount Fairy, NSW	2	Moruya, NSW	1
North Ward, QLD	2	Nicholls, ACT	1
Alexandra Hills, QLD	1	Queanbeyan, NSW	1
Braddon, ACT	1	Richmond, VIC	1
Budawang, NSW	1	Riverhills, QLD	1
Canberra Airport, ACT	1	Sutton, NSW	1
Carwoola, NSW	1	Sydney, NSW	1
Coombs, ACT	1	Unanderra, NSW	1
Eatons Hill, QLD	1	Upper Moutere, NZ	1

Support by Location

Of the 72 submissions in support of the proposal, 65 were from Bungendore. The 7 people outside Bungendore who supported the proposal came from nearby areas such as Lake George (3), Bywong (1), Captains Flat (1), Mulloon (1) and Queanbeyan East (1).

Table: Support by Location (N=72)

Suburb	Count
Bungendore, NSW	65
Lake George, NSW	3
Bywong, NSW	1
Captains Flat, NSW	1
Mulloon, NSW	1
Queanbeyan East, NSW	1

Table: Comment by Location (N=5)

Suburb	Count
Bungendore, NSW	4
Greenacre, NSW	1

Support by Location

The table below highlights some key differences in concerns raised by submissions from Bungendore, compared to those outside of Bungendore. Submissions from outside Bungendore are more likely to mention site location, loss of green space/recreation space, way of life, economic impacts and views.

Table: Summary of Key Differences in Concern by Location

Concerns	Bungendore (N=250)	Outside Bungendore (N=69)
7.1.1 Site Location	70%	86%
7.3.19 Social – loss of green space/recreation areas	61%	75%
7.3.21 Social – way of life	59%	72%
7.3.1 Economic impacts	24%	36%
7.3.16 Views	4%	12%

As seen in the table below, submissions from outside Bungendore are also less likely to mention positive impacts such as the need for an education facility in Bungendore, central location/proximity to services and facilities.

Table: Summary of Key Differences in Supporting Statements by Location

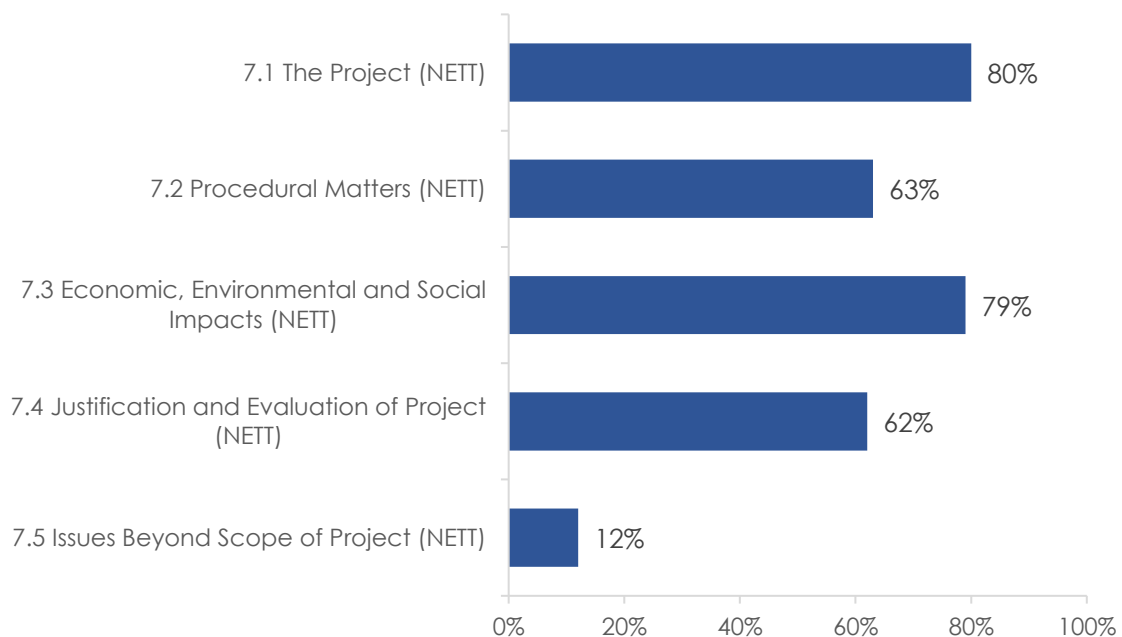
Supporting Comments	Bungendore (N=250)	Outside Bungendore (N=69)
Need for education facility in Bungendore	22%	6%
Central location/proximity to services and facilities	20%	4%
Positive addition to community/regional centre	15%	4%
Access to/sharing of education facilities for primary and secondary students	12%	3%

Main Concerns – Overview

The code frame used for grouping 'Concerns' into themes (see Appendix B) was split into five main themes: The Project; Procedural Matters; Economic, Environmental and Social Issues; Justification and Evaluation of the Project; and Issues Beyond Scope of Project.

Across all submissions, 80% voiced concerns regarding details of the project itself (location, size, built form etc) and 79% regarding economic, environmental and social impacts. 63% raised a concern regarding procedural matters relating to the site selection process, adequacy of consultation, consistency with SEARs (Standard Secretary's Environmental Assessment) etc., and similarly, 62% mentioned an issue regarding the justification and evaluation of the project (need for a school, alternative sites, consistency with legislation or strategic plans). Furthermore, 12% made reference to an issue beyond the scope of this project (such as the Abbeyfield development, Braidwood Central School or the Sports hub).

Chart: Percentage of Submissions that Mentioned a Theme within Key Categories



Base: N=319

Main Concerns - Overview

The table below cross-analyses the main categories to highlight some common themes. Reading the table downwards, we can see that 97% of submissions that raised an issue with the project e.g. site location, also mentioned an economic, environmental and social impact such as loss of green space/recreation areas, impact on way of life or heritage concerns. Similarly, of the submissions that mentioned a procedural matter (such as the site selection process), 100% of them mentioned an issue relating to the project, 99% mentioned an economic, environmental and social impact, and 85% mentioned an issue relating to justification and evaluation of the project.

Table: Cross-Analysis of the Main 'Concern' Categories

Column %	7.1 The Project (NETT)	7.2 Procedural Matters (NETT)	7.3 Economic, Environmental and Social Impacts (NETT)	7.4 Justification and Evaluation of Project (NETT)	7.5 Issues Beyond Scope of Project (NETT)
7.1 The Project (NETT)	100%	100%	98%	100%	97%
7.2 Procedural Matters (NETT)	79%	100%	79%	86%	82%
7.3 Economic, Environmental and Social Impacts (NETT)	97%	99%	100%	99%	97%
7.4 Justification and Evaluation of Project (NETT)	78%	85%	78%	100%	89%
7.5 Issues Beyond Scope of Project (NETT)	15%	15%	15%	17%	100%

Legend: Green shading is used to highlight values of 80% or higher

The following pages provide more detail around each of these five broad 'Concern' themes.

Project Issues (7.1)

80% of the submissions mentioned any one or more of the Project Issues shown below. 73% of all submissions mentioned the site location as a key issue, whilst this is even higher among those who object (95%). Other key concerns about the project itself are in relation to the site size/school capacity & built form, design and materiality.

Table: Breakdown of Issues Relating Specifically to the Project

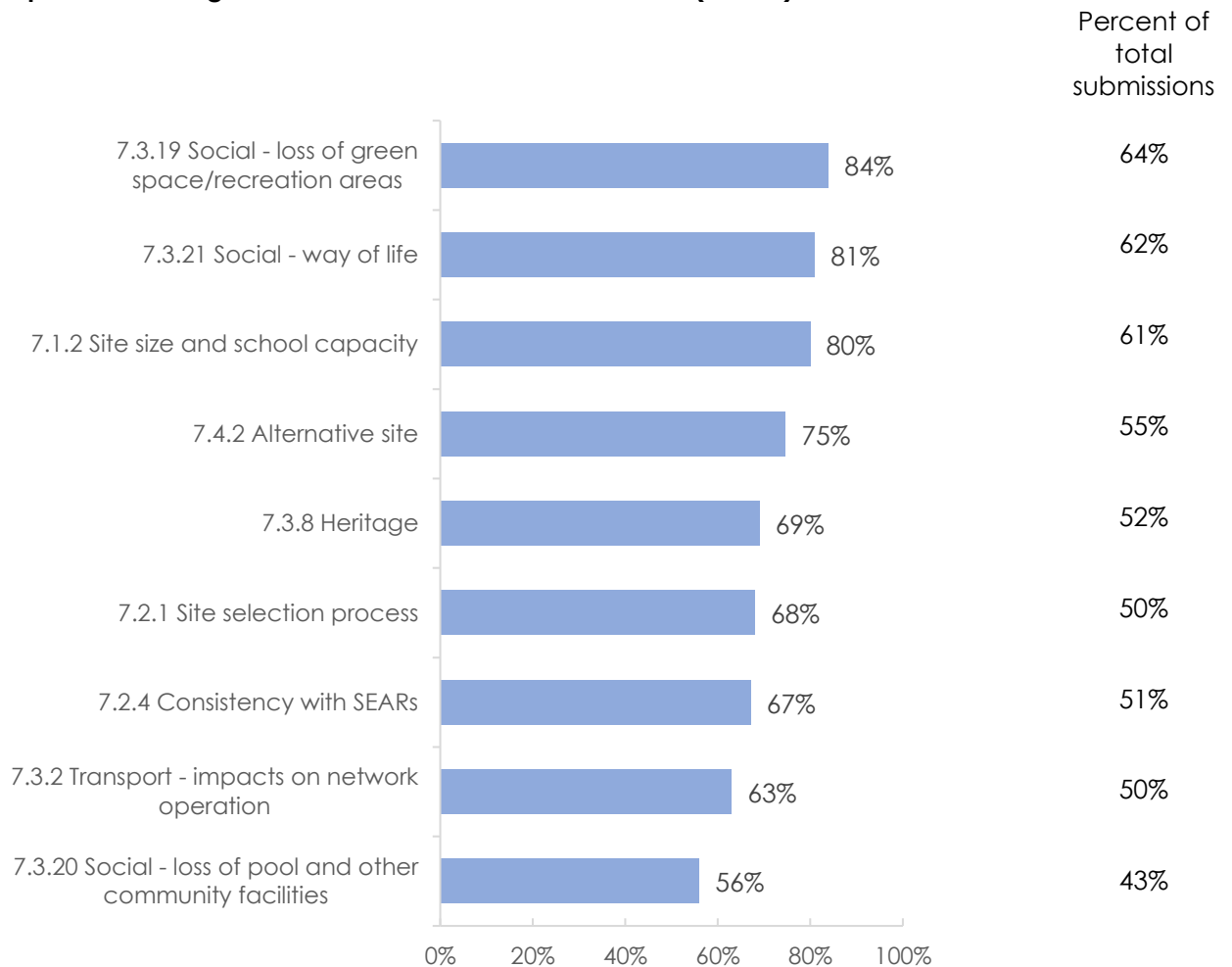
The Project	Count Among Total Submissions (N=319)	Percent of Total Submissions (N=319)	Percent Among Objections (N=242)
7.1 Project Issues (NETT)	254	80%	100%
7.1.1 Site Location	233	73%	95%
7.1.2 Site Size and School Capacity	194	61%	80%
7.1.3 Built Form, Design and Materiality	113	35%	44%
7.1.4 Ag Plot	36	11%	15%
7.1.5 Fencing	50	16%	19%
7.1.6 Landscaping	14	4%	5%
7.1.7 Staging	2	1%	1%
7.1.8 Hours	56	18%	23%
7.1.9 Signage	1	0%	<1%
7.1.10 Joint Use Arrangements	43	13%	17%
7.1.11 School Name	1	<1%	0%
7.1.12 Other Project Issues	9	3%	2%

Note: among the 72 submissions in support of the proposal, 10% mentioned a concern relating to the project – 4% had a concern about the built form, 3% with regards to the fencing and 3% mentioned other project issues.

Project Issues (7.1) – Location

The main sub-code on the previous page is 'Site location'. As shown in the chart below, among submissions that mentioned site location as an issue, 84% also mentioned social impacts related to the loss of green space and recreation areas, 81% mentioned impacts on way of life, followed by 80% who mentioned site size/capacity. Alternative sites, heritage, consistency with SEARs, the site selection process, transport – impact on network operation and social – loss of pool and other community facilities are also strongly associated with mentions of site location.

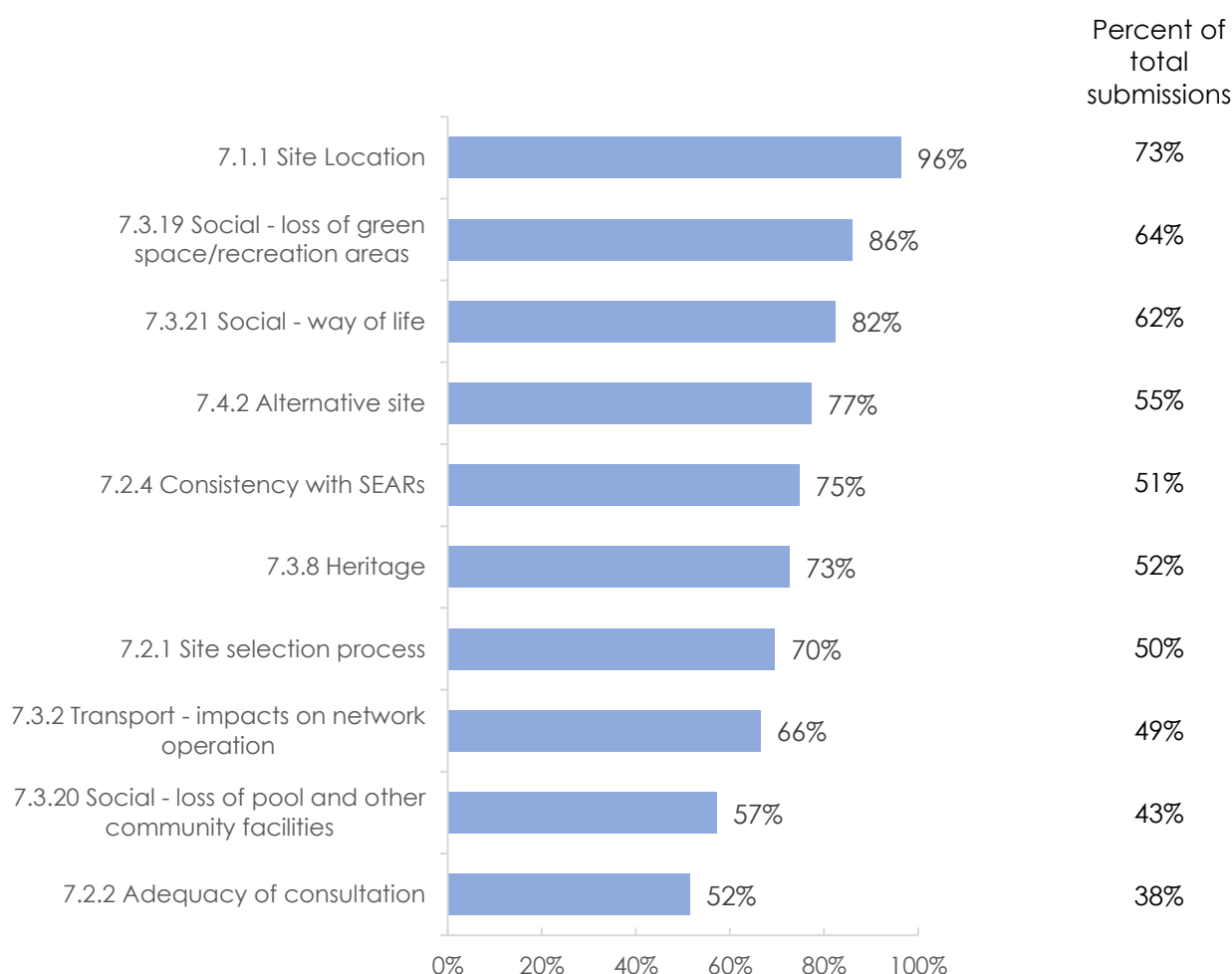
Chart: Top issues among those who mentioned 'Site Location' (N=233)



Project Issues (7.1.2) – Site Size and School Capacity

Another key sub-code within the category of project issues is the site size and school capacity. The main issues among those who mention site size are similar to those who have mentioned site location, though there is an increase in consistency with SEARs (75% vs 67% who have mentioned site location). The size of the site not meeting the School Site Selection and Development Guidelines was one of the reasons for a lack of consistency with SEARs.

Chart: Top issues among those who mentioned 'Site Size and School Capacity (N=194)



Procedural Matters (7.2)

63% of all submissions mentioned any one or more of the issues below relating to Procedural Matters, such as the site selection process, adequacy of consultation, consistency with SEARs etc. Furthermore, 82% of all objections mentioned a procedural matter. Consistency with SEARs and the site selection process are the main procedural issues, followed by adequacy of consultation.

Table: Breakdown of Procedural Issues Relating to the Project

Procedural Matters	Count Among Total Submissions (N=319)	Percent of Total Submissions (N=319)	Percent Among Objections (N=242)
7.2 Procedural Matters (NETT)	202	63%	82%
7.2.1 Site selection process	160	50%	66%
7.2.2 Adequacy of Consultation	121	38%	48%
7.2.3 Aboriginal land claims	9	3%	4%
7.2.4 Consistency with SEARs	163	51%	67%
7.2.5 Development contributions	1	<1%	<1%
7.2.6 Other procedural issues	0	0%	0%

Note: Among the 72 submissions in support of the proposal, 2 mentioned a procedural issue - adequacy of consultation.

The table below cross-analyses the main 'Procedural Matters' responses by themselves. As can be seen, the site selection process, adequacy of consultation and consistency with SEARs are all strongly associated with one another. For instance, reading the columns downwards, we can see that among the 160 submissions which referred to the site selection process, 67% also mentioned adequacy of consultation and 78% also mentioned consistency with SEARs.

Table: Analysis of Related Procedural Issues

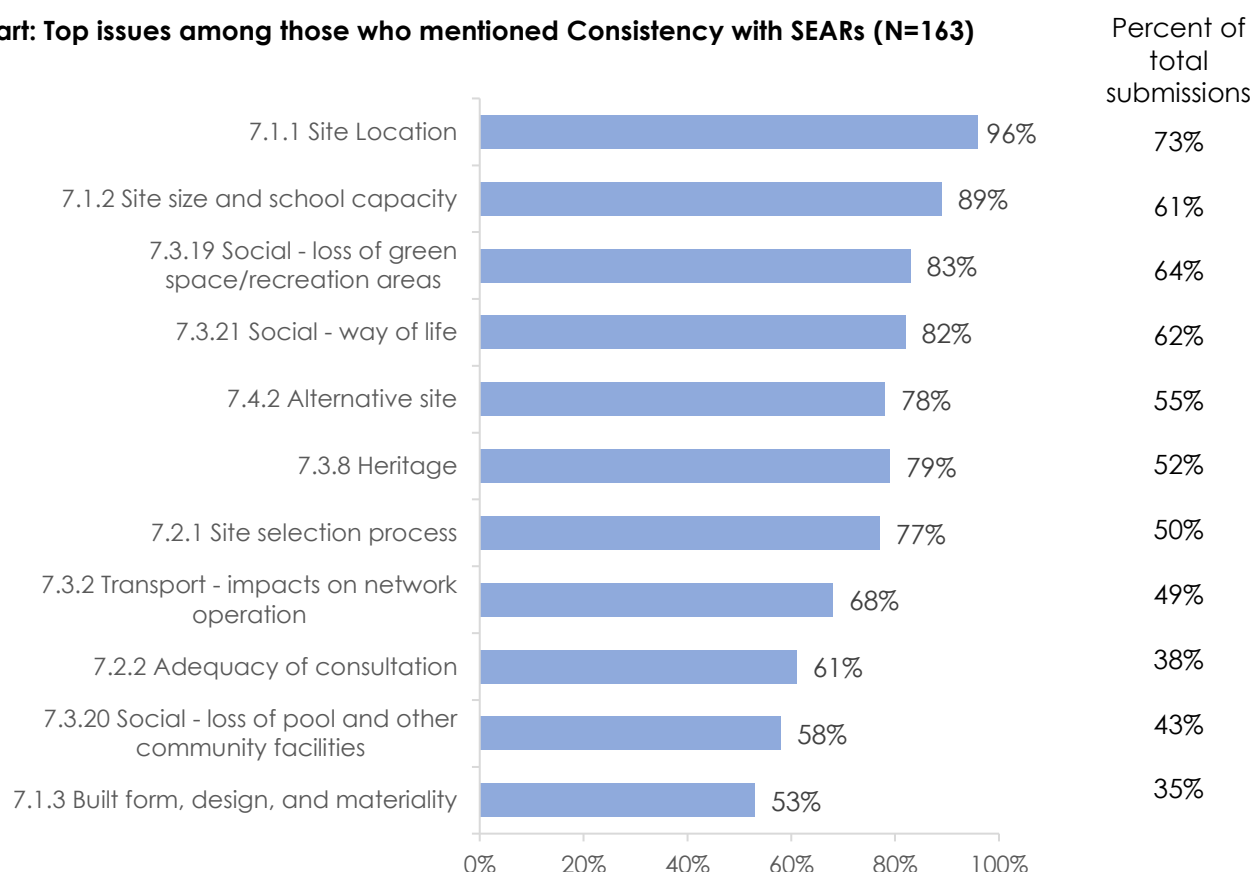
Column %	Percent of Total Submissions (N=319)	7.2.1 Site selection process	7.2.2 Adequacy of consultation	7.2.4 Consistency with SEARs
7.2 Procedural Matters (NETT)	63%	100%	100%	100%
7.2.1 Site selection process	50%	100%	88%	77%
7.2.2 Adequacy of consultation	38%	67%	100%	61%
7.2.4 Consistency with SEARs	51%	78%	82%	100%

Note: 7.2.3 Aboriginal land claims and 7.2.5 Development contributions are not shown in the table above due to small counts.

Procedural Matters (7.2) – Consistency with SEARs

As noted on the previous page, 51% of all submissions (and 67% of objections) pointed to consistency with SEARs, in other words, the current proposal was lacking required information or evidence of planning considerations. The chart shown below highlights the main other concerns among those who referenced consistency with SEARs.

Chart: Top issues among those who mentioned Consistency with SEARs (N=163)



Procedural Matters (7.2) – Consistency with SEARs

As shown in the chart above, submissions that mentioned consistency with SEARs (and generally speaking, any procedural issue) were also likely to mention the site location, site size and capacity, loss of green space/recreation areas and impact on way of life.

Some of these recurring themes are explored in more detail below:

- **Not adequately setting out the need and justification of the development.**
 - Submissions argue that there is insufficient evidence as to why the school should be built in the current location at the expense of community green space and facilities/amenities when there are other sites available. Several submissions commented that the school would exceed capacity within 3 years of opening, and it was not clear how additional capacity requirements had been considered. The school is also more expensive than a development of comparable size in nearby Jerrabomberra.
- **Failing to consider key surrounding developments** (Bungendore Preschool, Bungendore Public School and Abbeyfield as well as housing developments in East Bungendore, North Elmslea and Ashby).
 - Several submissions mentioned the impact of traffic and resulting road safety concerns on the Preschool and Public School. It was also mentioned that the size and capacity of the school would not be sufficient for the population growth and demand from housing developments.
- **Not providing adequate consideration of alternative sites as required by SEARs.**
 - Several submissions noted that there was not sufficient discussion of alternative sites and these sites were dismissed for vague reasons. In particular, several submissions mentioned a lack of clarity on why the Ashby site on Tarago Rd was originally chosen, and then changed to the current site on Bungendore Park.
- **Failure to consider relevant legislation policies and guidelines such as the Crown Land Management Act, School Site Selection and Development Guidelines, Roads Act 1993 etc.**
 - Several submissions note that the Department of Education does not currently own any of the land or have owner's consent and question whether the Crown land can legally be acquired and re-purposed for education usage. Aboriginal land claims and objections to the Majara St road closures may also impede development. A number of submissions made reference to the EIS which stated that the current location was proposed for its central location and 'relatively few site constraints'.

Economic, Environmental and Social Impacts (7.3)

79% of all submissions (and almost all objections [98%]) referred to one or more economic, environmental or social impacts (as shown in the table below). The main issues in this category were the resulting loss of green space/recreation space within Bungendore Park and impacts on way of life (such as reduced park and village amenity, disruptions to the town centre grid as well as impacts on ANZAC Day, sports, entertainment and other social and cultural gatherings). Other key issues were heritage concerns, traffic and the impacts on network operation, as well as the loss of pool and other community facilities.

Table: Breakdown of Issues Relating to Economic, Environmental and Social Impacts

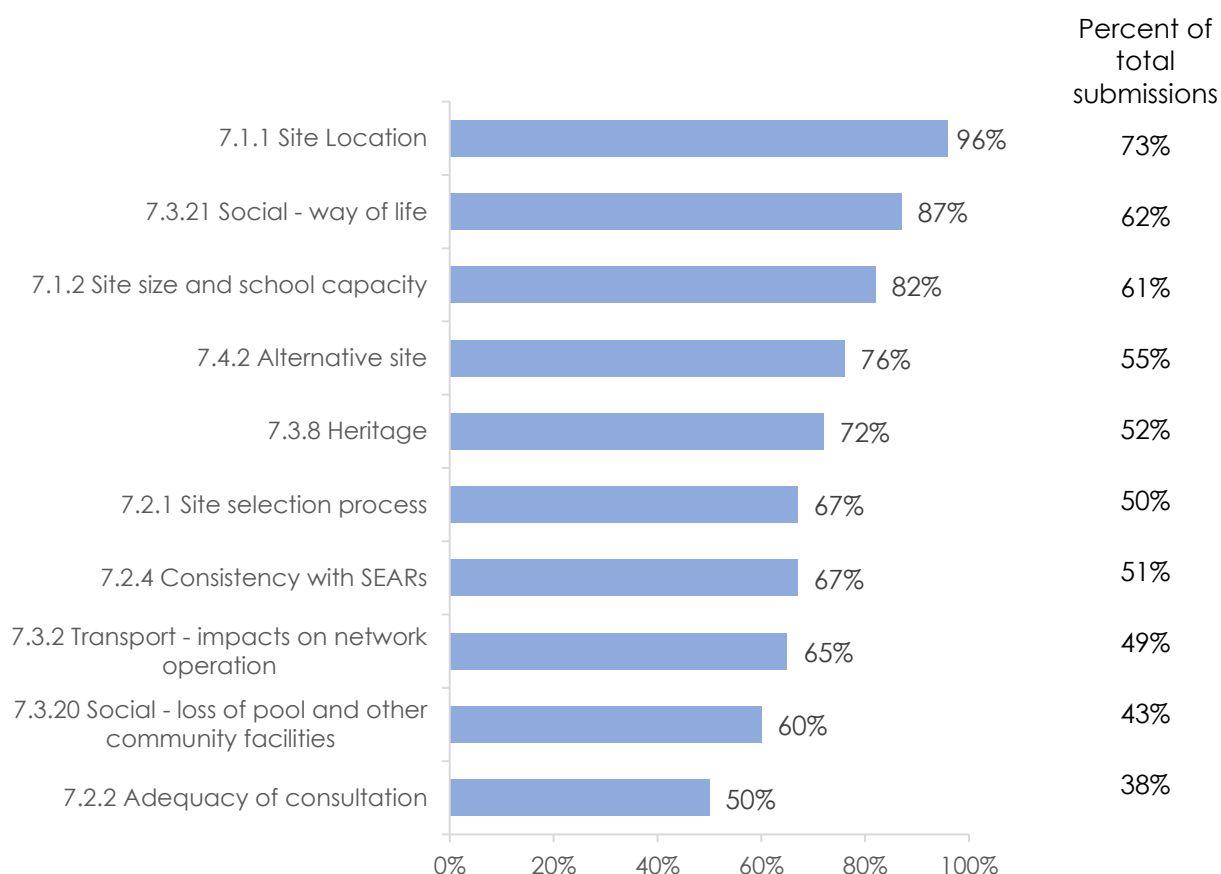
Economic, Environmental and Social Impacts	Count Among Total Submissions (N=319)	Percent of Total Submissions (N=319)	Percent Among Objections (N=242)
7.3 Economic, Environmental and Social Impacts (NETT)	251	79%	98%
7.3.1 Economic impacts	84	26%	34%
7.3.2 Transport – impacts on network operation	156	49%	64%
7.3.3 Transport – safety	71	22%	29%
7.3.4 Transport – adequacy of analysis	45	14%	19%
7.3.5 Transport – vehicular access and parking	66	21%	26%
7.3.6 Transport – pedestrian network	30	9%	12%
7.3.7 Transport – construction traffic and parking	4	1%	2%
7.3.8 Heritage	166	52%	68%
7.3.9 Aboriginal heritage	22	7%	9%
7.3.10 Tree removal	36	11%	15%
7.3.11 Noise – operational	17	5%	7%
7.3.12 Noise – construction	7	2%	3%
7.3.13 Lighting	4	1%	2%
7.3.14 Privacy	3	1%	1%
7.3.15 Contamination	57	18%	24%
7.3.16 Views	19	6%	7%
7.3.17 Overshadowing	2	1%	1%
7.3.18 Flooding	37	12%	15%
7.3.19 Social – loss of green space/recreation areas	204	64%	83%
7.3.20 Social – loss of pool and other community facilities	136	43%	56%
7.3.21 Social – way of life	197	62%	80%
7.3.22 Social – other	25	8%	10%
7.3.23 Sustainability	9	3%	4%
7.3.24 Biodiversity	6	2%	2%
7.3.25 Soil and groundwater	7	2%	3%
7.3.26 Waste	2	1%	1%
7.3.27 Other economic, social and environmental impacts	0	0%	0%

Economic, Environmental and Social Impacts (7.3)

Among the 72 submissions in support of the proposal, 9 of them (13%) mentioned a concern about economic, environmental and social impacts – these were primarily transport concerns e.g. vehicular access and parking, safety and the pedestrian network. Views and social – way of life also had 2 mentions each.

The chart below highlights the main issues among those who mentioned 7.3.19 Social – loss of green space/recreation space. Site location, impact on way of life and site size/school capacity are most likely to be mentioned among those who talk about loss of green space/recreation space, followed by alternative sites and heritage concerns.

Chart: Top issues among those who mentioned Social – loss of green space/recreation space (N=204)



Justification and Evaluation of Project (7.4)

Overall, 62% of all submissions (and 81% of objections) mentioned an issue relating to the justification and evaluation of the project. The primary concern within this category was alternative sites, with frequent mentions of the Ashby site on Tarago Road, Kings Highway or other greenfield development sites. For some participants, proper evaluation of alternative sites and reasons as to why they were not suitable have not been made clear.

Mention was also made regarding consistency with various acts of legislation such as the Crown Land Management Act 2016, the Roads Act 1993, EP&A Act, RE1 Zone objectives, and the Department of Education SEPP Design Quality Principles were either not adequately addressed in the EIS, or the EIS did not provide reasoning why the proposal did not meet such guidelines. The EIS was also said to be inconsistent with various strategic plans published by QPRC (Bungendore Structure Plan, Local Strategic Planning Statement), or NSW Government Architect and Department of Planning guides (Draft Greener Places Design Guide, South East and Regional Tablelands Regional Plan 2036). Reasons for inconsistency with strategic plans were in regards to: planning for growth, maintaining the heritage and village character of Bungendore, maintaining and improving green spaces, healthy connected communities and design principles that acknowledge the context of the local environment.

The potential for developing an Agricultural focused High School, taking advantage of local resources and building partnerships with local institutions such as the Mulloon Institute, CSIRO, Australian National University (ANU) and University of Canberra were coded as 7.4.5 Other issues relating to project justification and evaluation.

Table: Breakdown of Issues Relating to Justification and Evaluation of the Project

Justification and Evaluation of Project	Count Among Total Submissions (N=319)	Percent of Total Submissions (N=319)	Percent Among Objections (N=242)
7.4 Justification and Evaluation of Project (NETT)	198	62%	81%
7.4.1 Need for school	4	1%	2%
7.4.2 Alternative site	175	55%	72%
7.4.3 Consistency with legislation	97	30%	40%
7.4.4 Consistency with strategic plans	39	12%	16%
7.4.5 Other issues relating to project justification and evaluation	4	1%	2%

Note: among the 72 submissions in support of the proposal, there were no concerns related to justification and evaluation of the project.

Issues Beyond the Project Scope (7.5)

12% of submissions mentioned issues that are beyond the scope of this project (as defined by the code frame developed by Mecone). The main issues within this category are related to the Abbeyfield development and the Sports hub.

Table: Breakdown of Issues Beyond the Scope of the Project

7.5 Issues Beyond Scope of Project	Count Among Total Submissions	Percent of Total Submissions (N=319)	Percent Among Objections (N=242)
7.5 Issues Beyond Scope of Project (NETT)	38	12%	15%
7.5.1 Abbeyfield Development	18	6%	7%
7.5.2 Braidwood Central School	4	1%	2%
7.5.3 Sports Hub	18	6%	7%
7.5.4 Other issues beyond the project scope	2	1%	<1%

Note: among the 72 submissions in support of the proposal, there was only one mention of an issue beyond the scope of the project – access to the primary school from the Turallo Creek footbridge via Elmslea.

Abbeyfield development

The main concerns regarding the Abbeyfield Aged Care development are that the land on which the facility was going to be built (4-6 Majara Street) is now required for the Bungendore High School project. Thus, Abbeyfield has had to be relocated to a new site and is required to start the development process again, despite the many hours of time, effort and pro-bono legal, planning and architectural services dedicated to the originally proposed site at 4-6 Majara Street. Some submissions note that the EIS does not take into account Abbeyfield as a development in the vicinity of the high school, as well as the financial costs of starting the development process again and social impact from the delay in construction given the shortage of seniors' accommodation in Bungendore.

Braidwood Central School

Concerns were raised that the impact of students leaving Braidwood Central School to attend Bungendore High School had not been considered. It could potentially lead to the closure of BCS or a stop to HSC pathways.

Issues Beyond the Project Scope (7.5)

Sports Hub

Several submissions noted that the Sports hub is not a suitable replacement for the existing community facilities. There is strong objection to the removal of the current pool which was funded by the local community and its replacement at the Sports hub. There were also concerns around funding for the new pool which has not yet been granted, and therefore cannot be guaranteed. Several submissions also mentioned potential for flooding of the sports field, facilities being less accessible and no alternative for general purpose recreation space that would be lost at Bungendore Park.

Support for the Proposal (8.0)

72 submissions (or 23%) were in support of the proposal.

As shown in the table below, the large majority of those who support the current proposal reside within Bungendore (90%).

Table: Submissions in Support of the Proposal by Location (N=72)

Suburb	Count	Percentage of Support Submissions*
Bungendore, NSW	65	90%
Lake George, NSW	3	4%
Captains Flat, NSW	1	1%
Mulloon, NSW	1	1%
Queanbeyan East, NSW	1	1%
Bywong, NSW	1	1%

*Note: percentages do not add to 100% due to rounding.

Among all submissions, there was also a significant number of submissions stating they supported a high school in Bungendore, but not the current proposal. 125 (or 39%) of the submissions were identified to be in support of a high school in Bungendore generally, despite having reservations towards the current proposal (and 109 of these were objections). Of the remaining 16, 12 lodged a submission in support of the proposal but mentioned one or more concerns, and 4 lodged a submission as 'Comment'. The breakdown of these 125 submissions (in support of a high school but have one or more concerns) is shown in the table below.

Table: Breakdown of Submissions that Support a High School but Have Reservations by Location (N=125)

Suburb	Count	Percent	Suburb	Count	Percent
Bungendore, NSW	95	76%	Greenleigh, NSW	1	1%
Wamboin, NSW	7	6%	Kingston, ACT	1	1%
Bywong, NSW	5	4%	Macgregor, ACT	1	1%
Hoskinstown, NSW	2	2%	Mongarlowe, NSW	1	1%
Queanbeyan East, NSW	2	2%	Mount Fairy, NSW	1	1%
Alexandra Hills, QLD	1	1%	Nicholls, ACT	1	1%
Canberra Airport, ACT	1	1%	Queanbeyan, NSW	1	1%
Carwoola, NSW	1	1%	Richmond, VIC	1	1%
Coombs, ACT	1	1%	Upper Moutere, NZ	1	1%
Eatons Hill, QLD	1	1%		1	

Reasons for Supporting the Proposal (8.0)

The main reasons for supporting the proposal mentioned addressing the need for an education facility/high school in Bungendore, central location of the school with proximity to other services and facilities in the town centre, and a high school being a positive addition to the community/regional centre.

Table: Breakdown of Supporting Statements

Supporting statements	Count Among Total Submissions (N=319)	Percent of Total Submissions (N=319)	Percent Among Support (N=72)
Supporting statements (NETT)	185	58%	100%
I support a new high school but have reservations	125	39%	17%
Need for education facility in Bungendore	60	19%	68%
Central location/proximity to services and facilities	53	17%	72%
Positive addition to community/regional centre	40	13%	51%
Fully support the proposal – no objections	39	12%	54%
Access to/sharing of education facilities for primary and secondary students	31	10%	43%
Safety and accessibility	23	7%	32%
Minimal impact to recreation area and community facilities	22	7%	31%
Better new facilities e.g. community centre, sports centre	21	7%	29%
Supporting economic and population growth	20	6%	25%
Supportive of design and size	16	5%	22%
Supports active lifestyles and improved quality of life	12	4%	15%
Employment opportunities	10	3%	11%
Limited impact on traffic, parking and pedestrian network	9	3%	13%
Cohesive to way of life and connecting the community	8	3%	11%
Re-use of Council building	7	2%	10%
Heritage significance/value will not be compromised	6	2%	8%
Additional facilities for the community e.g. access to school gym, basketball courts and school hall	4	1%	6%
Adequate consultation and access to information	3	1%	4%
Other comment e.g. school should be open to years 7-12 from the beginning	3	1%	4%
Potential for future development	2	1%	3%
Development can continue despite contamination e.g. with remediation	1	<1%	1%

Reasons for Supporting the Proposal

(8.0)

As shown in the above table, the current proposal is seen to have several positive benefits and impacts on the community:

- Addresses the community need for a local high school in Bungendore. Re-thinking the proposed location is said to cause additional delays and prevent the school from opening in Term 1, 2023.
- The proposed site location is central to the town, and said to be safer and more accessible than other greenfield locations located close to a highway with high volumes of traffic. The location is also said to be convenient for students travelling independently to/from school (walking or cycling) as well as parents dropping off their children.
- Ability for high school students to attend after school activities or participate in the workforce by attending work after school.
- Reduction in travel time for students, thus improving quality of life and supporting active lifestyles.
- Positive benefits of an education hub/sharing of facilities with additional facilities for the primary school and opportunities for developing extended learning opportunities between the primary and high school. There were also mentions of an easier transition to high school given the proposed location.
- The provision of better/new facilities such as the community centre and sports centre which the community will benefit from.
- Additional shared usage facilities such as access to the school gymnasium, basketball courts and school hall.
- Allow for connection between students and members/groups of the community by encouraging students to become more involved in the community and give back.
- Re-use of the Council administration building which allows for Council to re-invest in other facilities for the community.
- Supports the economic and population growth of Bungendore and surrounds. Families will likely move to or stay in Bungendore as a result of the high school. This also includes supporting the demand for local businesses and increasing employment opportunities from construction through to operation. A high school will help establish a more inclusive community that is not just for young families or older retired residents. It will also provide a drawcard for businesses to establish in the village and an increase in population will support commercial activity in non-tourist periods.

Reasons for Supporting the Proposal

(8.0)

There were also some comments negating the severity of issues that had been raised. Examples of supporting comments include:

- The proposed high school will have minimal impact to recreation areas and community facilities. Several submissions mentioned that currently recreation areas had little usage during school hours. Shared usage may further enhance and activate the area rather than diminish Mick Sherd Oval and Bungendore Park as a result of greater utilisation.
- The Sports Hub will compensate for the loss of the community swimming pool and sports fields.
- Have limited impact on the traffic, parking and pedestrian network. Proposed measures to minimise traffic impact, the addition of roundabouts at the intersection of Majara and Gibraltar Streets and relocation of bus zones and kiss-and-drop areas are said to be adequate. Consideration towards pedestrian access during construction and upgrades to shared pathways are also said to be appropriate. The proposed changes will make it safer for students attending the existing primary school and preschool.
- Heritage significance/value will not be compromised. In fact, proximity to the cenotaph is said to be an opportunity for students to learn, remember and commemorate those who served on ANZAC day.
- Adequate consultation and access to information. The Social Impact Assessment provides an accurate representation – short term negative aspects in relation to access to facilities which is reduced over time. The site has gone through a number of changes throughout history.
- The design is said to be compact and practical, an efficient use of space and utilises outdoor space in the heart of the community. However, several submissions note that the front office of the primary school should remain in the existing space. Student access to the oval during breaks is also mentioned. Provisions for a stage, audio and lighting in the school hall/gymnasium could also be considered.
- The school is said to be an appropriate size, and that a bigger school would detract from the education experience. As the town grows, a second high school could be built closer to the new development areas.

Final Comments

The primary purpose of this report is to quantify the number of times key issues/concerns and supporting comments are mentioned within the public and organisation submissions. This provides a high-level understanding of the main reasons for objecting to or supporting the proposal. The points below provide a more nuanced understanding, with a view to address what could potentially be done to help mitigate some of the community's concerns.

Access to Green Spaces/Open Spaces

- Some submissions noted that the Sports Hub was already planned before the Bungendore High School proposal and thus was intended to be an additional facility rather than a replacement. The Sports Hub may be used to accommodate sports groups but is said not to be a suitable alternative for general recreation usage. Warren Little Creek is not seen as a suitable alternative as it is less accessible, safe, susceptible to flooding and tiger snakes etc.
- In line with local and state government strategic plans, ensuring current and future residents have adequate access to green spaces/open spaces should remain a planning priority.

Impact on Community Facilities

- Further communication may be required regarding whether all community facilities will be replaced as well as how and when alternative facilities can be accessed. Apart from objection to the loss of current facility which was built using funds raised by the community, there are some concerns regarding funding for the new swimming pool and thus uncertainty regarding its replacement.

Meeting Future Demand/Capacity Needs of the High School

- Further clarification is likely required as to how the current proposal considers future demand and capacity of the high school, given that the proposed site location is less than the Department of Education's recommended size guidelines. It is not clear what will happen once Bungendore High School reaches its capacity of students.
- Where possible, consideration should be made to allow students who currently attend private schools or nearby primary schools (not just Bungendore Primary School) to attend the new High School in Bungendore should they wish to do so.
- Several submissions question whether the school is fit-for-purpose and can offer a quality education given the site/size limitations.

Final Comments

Traffic, Parking and Pedestrian Networks

- Traffic, road safety, parking and pedestrian walkways remain a concern with the proposal, even amongst those who support the proposal. A further review of the traffic assessment and/or additional measures could be considered to help alleviate concerns and ensure that the impact of road closures has been adequately measured.

Contamination Risks

- As a recent discovery, further testing to determine the extent of lead contamination along the railway corridor still needs to be completed. The outcome of which may pose further challenges for the proposal including mitigation, remediation works and/or delays to construction. If the proposal proceeds, the community will likely want to receive clear information about the recommended actions of the testing and reassurance that the site does not pose any health and safety risks.

Communication and Consultation

- An overarching theme is a lack of consultation within the community, including with key stakeholder groups. Several submissions mention limited opportunities to provide feedback other than design considerations. There was no opportunity to provide feedback on the site location or other reasons for concern.
- Ensuring the community has adequate updates and access to key information will be important as the project progresses, particularly with regards to commissioning, construction and timing. This includes outcomes of decision making, how input from the community has been considered, reasons why decisions have been made and potential impacts resulting from such decisions.

Appendix A: Submissions Register

Group	Public URL	Name	Sections where issues are addressed in submissions report
Organisation	803406	Design+Planning	7.1.1 - 7.1.3, 7.2.1 - 7.2.2, 7.2.4, 7.3.1 - 7.3.2, 7.3.8, 7.3.20, 7.4.2
Organisation	803481	Bungendore Chamber of Commerce and Industry Inc	8.0
Organisation	803596	Bungendore War Memorial Committee	7.1.3, 7.1.5, 7.1.8, 7.1.10, 7.2.2, 7.2.4, 7.3.2, 7.3.8, 7.3.19, 7.3.21, 8.0
Organisation	803816	Bungendore High School Action Group	8.0
Organisation	803776	Save Bungendore Park Inc	7.1.1 - 7.1.10, 7.2.1 - 7.2.5, 7.3.1 - 7.3.26, 7.4.2 - 7.4.4, 7.5.1 - 7.5.3, 8.0
Organisation	804066	Crown Land Our Land	7.1.1 - 7.1.5, 7.1.8, 7.1.10, 7.2.1 - 7.2.4, 7.3.1 - 7.3.4, 7.3.8 - 7.3.9, 7.3.15 - 7.3.16, 7.3.18 - 7.3.21, 7.4.2, 7.4.3, 7.5.1, 8.0
Organisation	804071	Braidwood Greens	7.1.2 - 7.1.3, 7.1.6, 7.2.1, 7.2.4, 7.3.1 - 7.3.4, 7.3.6, 7.3.8 - 7.3.9, 7.3.12, 7.3.18 - 7.3.22, 7.4.2 - 7.4.4
Organisation	804366	Bungendore Youth Orchestra	7.1.12, 8.0
Public	802871	Cindy Elliott	8.0
Public	802886	Anonymous	7.5.4, 8.0
Public	802876	Anonymous	7.1.1, 7.1.8, 7.1.10, 7.3.19 - 7.3.20, 7.4.2, 8.0
Public	802881	Alan Longhurst	8.0
Public	802891	Clarinda MacFarlane	8.0
Public	802896	Matthew Stanton	7.3.5 - 7.3.6, 8.0
Public	802911	Anonymous	8.0
Public	802901	Xanthe Longhurst	8.0
Public	802906	Bronwyn Budd	8.0
Public	802916	Susan Donnelly	7.1.1 - 7.1.4, 7.1.10, 7.2.1 - 7.2.2, 7.2.4, 7.3.19 - 7.3.21, 7.4.2, 8.0
Public	802921	Chris Knights	7.1.2, 7.2.1 - 7.2.2, 7.2.4, 7.3.20
Public	802926	Anonymous	7.1.1, 7.2.1 - 7.2.2, 7.2.4, 7.3.1, 7.3.19 - 7.3.22, 7.4.2 - 7.4.3, 8.0
Public	803891	Sharon Rasker	7.1.1 - 7.1.2, 7.2.1 - 7.2.2, 7.2.4, 7.3.8 - 7.3.9, 7.3.21, 7.4.2 - 7.4.3
Public	802931	Cherie Humphries	7.1.1 - 7.1.3, 7.2.1, 7.2.4, 7.3.1, 7.3.8, 7.3.19 - 7.3.20, 7.4.1 - 7.4.3, 7.5.2
Public	802936	Hans Rasker	7.1.1 - 7.1.2, 7.2.1 - 7.2.2, 7.2.4, 7.3.19, 7.4.2 - 7.4.3
Public	804006	Damian Robinson	7.1.1 - 7.1.3, 7.2.1, 7.2.4, 7.3.19, 7.4.2

Public	804056	Carolyn Cole	7.1.1 - 7.1.3, 7.2.1 - 7.2.2, 7.2.4, 7.3.1 - 7.3.4, 7.3.8, 7.3.18 - 7.3.21, 7.4.2 - 7.4.4
Public	802941	Derek Payne	7.1.1 - 7.1.3, 7.2.1 - 7.2.2, 7.2.4, 7.3.2, 7.3.4, 7.3.8, 7.4.3 - 7.4.4
Public	804021	Dorothy Liddon	7.1.1, 7.1.3, 7.1.10, 7.3.2, 7.3.5, 7.3.8, 7.3.19 - 7.3.21, 7.4.3
Public	802946	Matthew Clarke	8.0
Public	802951	Garth Morrison	7.1.1 - 7.1.3, 7.1.10, 7.1.12, 7.2.1, 7.2.4, 7.3.8 - 7.3.9, 7.3.19 - 7.3.22, 7.4.2 - 7.4.3, 7.5.3, 8.0
Public	802956	Anonymous	8.0
Public	804011	Cliff Cole	7.1.1 - 7.1.3, 7.1.5 - 7.1.6, 7.1.8, 7.2.1 - 7.2.2, 7.2.4, 7.3.1 - 7.3.2, 7.3.4 - 7.3.5, 7.3.8, 7.3.10, 7.3.19 - 7.3.21, 7.4.2 - 7.4.4, 7.5.3
Public	802961	Angie Angel	7.1.1 - 7.1.4, 7.1.8, 7.2.1 - 7.2.2, 7.2.4, 7.3.1 - 7.3.2, 7.3.4, 7.3.8, 7.3.10, 7.3.13, 7.3.19 - 7.3.22, 7.4.2, 7.5.2
Public	804016	Gavin Whiteley	7.1.8, 7.3.2, 7.3.8 - 7.3.9, 7.3.19 - 7.3.21, 7.4.3, 7.5.1
Public	802966	Anonymous	8.0
Public	804026	Haidee Whiteley	7.1.8, 7.3.2, 7.3.8 - 7.3.9, 7.3.19 - 7.3.21, 7.4.3, 7.5.1
Public	802971	Bruce Pettit	7.1.1 - 7.1.2, 7.1.4, 7.2.1, 7.2.4, 7.3.1 - 7.3.3, 7.3.5, 7.3.8, 7.3.19 - 7.3.21, 7.4.2
Public	802976	Rob Bolitho	7.1.1, 7.2.1 - 7.2.2, 7.3.2, 7.3.4, 7.3.19 - 7.3.20, 7.4.1 - 7.4.2
Public	802981	Anonymous	7.1.1 - 7.1.2, 7.2.4, 7.3.2 - 7.3.3, 7.3.5, 7.3.8, 7.3.19, 7.3.21, 7.4.2, 8.0
Public	802986	Anonymous	8.0
Public	802991	Anonymous	8.0
Public	802996	Lisa Eldridge	7.3.6, 8.0
Public	803001	Anonymous	8.0
Public	803006	Anonymous	8.0
Public	803011	Anonymous	8.0
Public	803016	Allan Donnelly	7.1.1, 7.1.3, 7.2.1 - 7.2.2, 7.2.4, 7.3.2, 7.3.8, 7.3.16, 7.3.19, 7.3.21, 7.4.2
Public	804031	Grant Rawstorn	7.1.1 - 7.1.2, 7.2.1 - 7.2.2, 7.2.4, 7.3.2, 7.3.8, 7.3.19, 7.3.21, 7.4.2
Public	804036	Jillian Rawstorn	7.1.1 - 7.1.2, 7.2.1 - 7.2.2, 7.2.4, 7.3.2, 7.3.8, 7.3.19, 7.3.21, 7.4.2
Public	803021	Edward Pettit	7.1.1 - 7.1.3, 7.1.5, 7.1.8, 7.1.10, 7.2.2, 7.2.4, 7.3.19, 7.3.21, 7.4.2
Public	803031	Warner Hieatt	7.1.1, 7.2.1 - 7.2.2, 7.3.19, 7.4.2, 8.0
Public	803046	Anonymous	7.1.1, 7.1.3, 7.1.5, 7.3.2, 7.3.21, 7.4.2
Public	803051	Anonymous	7.1.1, 7.1.3, 7.1.5, 7.3.1 - 7.3.2, 7.3.19 - 7.3.21
Public	803036	Hayley Gumley	7.1.1 - 7.1.2, 7.2.4, 7.3.2, 7.3.8, 7.3.19 - 7.3.21, 7.4.2, 8.0
Public	803076	Tom Arthur	7.1.1 - 7.1.2, 7.2.2, 7.2.4, 7.3.1 - 7.3.2, 7.3.8, 7.3.19 - 7.3.20, 7.4.2
Public	803026	Anonymous	7.1.1, 7.2.1 - 7.2.2, 7.2.4, 7.3.2, 7.3.19, 7.3.21, 8.0
Public	803041	Kerel Pearce	7.1.1 - 7.1.2, 7.2.1, 7.2.4, 7.3.1 - 7.3.3, 7.3.6, 7.3.8, 7.3.19, 7.4.2
Public	803071	Anonymous	8.0

Public	803086	Elizabeth Forman	7.1.1 - 7.1.3, 7.1.8, 7.1.10, 7.2.4, 7.3.8, 7.3.19 - 7.3.21, 7.4.2 - 7.4.3, 8.0
Public	803091	Clifford Peady	7.1.1 - 7.1.2, 7.2.4, 7.3.8, 7.3.18 - 7.3.21, 7.4.2 - 7.4.3, 8.0
Public	803056	Lauren Woods	7.1.1 - 7.1.2, 7.3.2, 7.3.5, 7.3.8 - 7.3.9, 7.3.19 - 7.3.20, 7.3.22, 7.4.2 - 7.4.3, 8.0
Public	803061	Anonymous	7.1.1 - 7.1.2, 7.2.1, 7.2.4, 7.3.3, 7.3.8, 7.3.19 - 7.3.21, 7.4.2 - 7.4.3, 7.5.3, 8.0
Public	803066	Chanel Sullivan	7.1.1 - 7.1.3, 7.2.2, 7.2.4, 7.3.1, 7.3.8, 7.3.10, 7.3.16, 7.3.19 - 7.3.21, 7.4.2, 8.0
Public	803081	Anonymous	7.1.1 - 7.1.2, 7.2.1 - 7.2.2, 7.2.4, 7.3.2, 7.3.18 - 7.3.19, 7.4.2 - 7.4.3
Public	803096	Steven Broussos	7.1.1, 7.3.2
Public	803101	Stephen Sillis	7.1.1, 7.3.1, 7.3.8, 7.3.19 - 7.3.21, 7.4.2
Public	803111	Anonymous	7.1.1 - 7.1.2, 7.1.5, 7.1.8, 7.1.10, 7.2.1, 7.2.4, 7.3.2 - 7.3.3, 7.3.5, 7.3.19 - 7.3.21, 7.4.2, 7.4.4, 8.0
Public	803106	Jennifer Cave	7.1.1 - 7.1.2, 7.1.4, 7.2.1, 7.2.4, 7.3.2 - 7.3.3, 7.3.5, 7.3.8, 7.3.19 - 7.3.21, 7.4.2, 8.0
Public	803116	Donna Arthur	7.1.1 - 7.1.3, 7.2.1 - 7.2.2, 7.2.4, 7.3.1 - 7.3.3, 7.3.5, 7.3.8, 7.3.19 - 7.3.21, 7.4.2
Public	804041	Norma Luton	7.1.1, 7.2.4, 7.3.2, 7.3.5, 7.3.8, 7.3.9, 7.3.19 - 7.3.21, 7.4.2 - 7.4.3, 8.0
Public	803136	Vivian Cayirlyls	7.1.1, 7.3.3, 7.3.20
Public	803121	Rohan Soulsby	7.1.1 - 7.1.2, 7.1.8, 7.2.1 - 7.2.2, 7.3.2, 7.3.5, 7.3.8, 7.3.12, 7.3.19, 7.3.21, 7.4.3
Public	803126	Anonymous	7.1.1 - 7.1.4, 7.2.1 - 7.2.2, 7.2.4, 7.3.1 - 7.3.2, 7.3.8, 7.3.10, 7.3.18 - 7.3.21, 7.3.24, 7.4.2 - 7.4.4, 8.0
Public	803131	Kate Soulsby	7.1.1 - 7.1.5, 7.1.8, 7.1.10, 7.2.1 - 7.2.2, 7.2.4, 7.3.2, 7.3.5, 7.3.8, 7.3.11, 7.3.19 - 7.3.21, 7.4.2 - 7.4.3
Public	803141	Anonymous	7.1.1 - 7.1.2, 7.1.4, 7.2.1 - 7.2.2, 7.2.4, 7.3.1 - 7.3.3, 7.3.8, 7.3.10, 7.3.18 - 7.3.21, 7.4.2 - 7.4.4, 8.0
Public	803146	Robert Angel	7.1.1 - 7.1.2, 7.1.4, 7.1.8, 7.2.1, 7.2.4, 7.3.15, 7.3.19 - 7.3.21, 7.4.2, 7.5.3
Public	803151	Anonymous	7.1.1 - 7.1.3, 7.2.1, 7.2.4, 7.3.15, 7.3.19 - 7.3.20, 7.4.2, 8.0
Public	804046	Dianne Pearce	7.1.1, 7.2.1 - 7.2.2, 7.2.4, 7.3.1 - 7.3.3, 7.3.8, 7.3.15, 7.3.19 - 7.3.21, 7.4.2
Public	803156	Robyn Briggs	7.1.1 - 7.1.2, 7.1.5, 7.1.10, 7.2.4, 7.3.1 - 7.3.2, 7.3.8, 7.3.19 - 7.3.20, 7.4.2, 7.5.3, 8.0
Public	803161	Jill Fox	7.1.1 - 7.1.2, 7.2.1, 7.2.4, 7.3.19 - 7.3.20, 7.3.22, 7.4.2 - 7.4.3, 7.5.3, 8.0
Public	803166	Carter Moore	8.0
Public	803171	Anonymous	7.1.1, 7.2.1 - 7.2.2, 7.3.2, 7.3.20 - 7.3.21, 7.4.2, 7.4.4, 8.0
Public	804051	Rodney Kemp	7.1.1 - 7.1.2, 7.1.5, 7.2.1 - 7.2.2, 7.2.4, 7.3.2, 7.3.8 - 7.3.9, 7.3.19 - 7.3.22, 7.4.2 - 7.4.3, 8.0
Public	803176	Charlotte Morrison	7.1.1 - 7.1.3, 7.1.8, 7.1.10, 7.1.12, 7.2.4, 7.3.8, 7.3.15, 7.3.19 - 7.3.21, 7.4.2
Public	803181	Trevor Wilson	8.0
Public	803186	Anonymous	7.1.1 - 7.1.2, 7.3.2, 7.3.5, 7.3.19 - 7.3.21, 7.4.2, 8.0
Public	803191	Anonymous	7.3.5, 8.0

Public	804151	John Preston	7.1.1 - 7.1.3, 7.1.5, 7.1.8, 7.2.1 - 7.2.4, 7.3.1 - 7.3.5, 7.3.8, 7.3.11, 7.3.15, 7.3.19 - 7.3.21, 7.4.2 - 7.4.4, 7.5.1, 8.0
Public	803196	Anonymous	7.1.1 - 7.1.2, 7.2.1, 7.3.1, 7.3.19 - 7.3.21, 7.4.2, 8.0
Public	804156	Jonathan Davis	7.1.1 - 7.1.2, 7.2.1, 7.3.8, 7.3.19 - 7.3.21, 7.4.2
Public	803206	Tracey Winters	7.1.1 - 7.1.3, 7.1.8, 7.1.10, 7.2.1 - 7.2.2, 7.2.4, 7.3.2 - 7.3.3, 7.3.8, 7.3.10, 7.3.15, 7.3.19 - 7.3.22, 7.4.3 - 7.4.4, 8.0
Public	803201	Anonymous	7.1.1, 7.3.2, 7.3.21
Public	804161	Bari Hall-Saha	7.1.1 - 7.1.3, 7.2.1 - 7.2.2, 7.2.4, 7.3.8, 7.3.15, 7.3.19 - 7.3.21, 7.4.2 - 7.4.3, 7.5.3, 8.0
Public	803216	Anonymous	8.0
Public	803226	Dennis Langley	7.1.1 - 7.1.2, 7.2.1, 7.3.2, 7.3.19, 7.4.2, 8.0
Public	804166	Anonymous	7.1.1 - 7.1.3, 7.1.8, 7.1.10, 7.3.2 - 7.3.3, 7.3.5 - 7.3.6, 7.3.8, 7.3.19, 7.3.21, 7.4.2, 8.0
Public	803236	Corinne Arthur	7.1.1 - 7.1.2, 7.2.1 - 7.2.2, 7.2.4, 7.3.1 - 7.3.2, 7.3.8, 7.3.11, 7.3.19 - 7.3.21
Public	803241	Anonymous	7.1.1 - 7.1.3, 7.2.1, 7.3.8, 7.3.10, 7.3.16, 7.3.19 - 7.3.21, 7.4.2
Public	803221	Rhonda-Jane Foulds	7.1.1 - 7.1.2, 7.3.2, 7.3.5, 7.3.8, 7.3.10, 7.3.19 - 7.3.21, 7.4.2
Public	803211	Peter Scardoni	7.1.1, 7.2.1, 7.3.2, 7.3.8, 7.3.19 - 7.3.20, 7.4.2
Public	803231	Cherie Langley	7.1.1 - 7.1.2, 7.2.1 - 7.2.2, 7.2.4, 7.3.2, 7.3.8, 7.3.19 - 7.3.21, 7.4.2 - 7.4.3, 8.0
Public	803246	Keith Foulds	7.1.1 - 7.1.3, 7.2.1 - 7.2.2, 7.2.4, 7.3.1 - 7.3.2, 7.3.5, 7.3.8, 7.3.20
Public	803251	Andy Burbidge	7.1.1 - 7.1.2, 7.1.5, 7.1.10, 7.2.1 - 7.2.2, 7.3.2 - 7.3.3, 7.3.5 - 7.3.6, 7.3.8, 7.3.15, 7.3.19 - 7.3.21, 7.4.2, 8.0
Public	803256	Gillian Warwick	7.1.1, 7.1.8, 7.1.10, 7.3.19 - 7.3.21, 7.4.3
Public	804171	Mark Ellis	7.1.1 - 7.1.3, 7.1.5, 7.1.8, 7.2.2, 7.2.4, 7.3.2, 7.3.4, 7.3.8, 7.3.15, 7.3.19, 7.3.21, 7.4.2
Public	804176	Lindsay Snowdon	7.1.1 - 7.1.2, 7.2.1, 7.2.4, 7.3.2 - 7.3.4, 7.3.19, 7.3.21, 7.4.2 - 7.4.3
Public	803261	Don Vogt	7.1.1, 7.3.1, 7.3.8, 7.3.19 - 7.3.21, 8.0
Public	803266	Anonymous	7.1.1 - 7.1.2, 7.2.1 - 7.2.2, 7.2.4, 7.3.8, 7.3.19, 7.3.21, 7.4.2 - 7.4.3, 8.0
Public	804061	Carolyn Cole	7.1.1 - 7.1.2, 7.2.1, 7.2.4, 7.3.2, 7.3.4 - 7.3.6, 7.3.8, 7.3.15, 7.3.19 - 7.3.21, 7.4.2 - 7.4.4
Public	803276	Anonymous	7.1.1 - 7.1.2, 7.2.1 - 7.2.2, 7.3.2 - 7.3.3, 7.3.5, 7.3.8, 7.3.19, 7.3.21
Public	804181	Richard Gregory	7.1.1 - 7.1.5, 7.1.8, 7.1.10, 7.1.12, 7.2.1 - 7.2.4, 7.3.1 - 7.3.10, 7.3.15, 7.3.17 - 7.3.22, 7.3.25, 7.4.2 - 7.4.4, 7.5.1, 7.5.3, 8.0
Public	803281	Emily Nicoll	7.1.1 - 7.1.3, 7.1.8, 7.2.1 - 7.2.2, 7.2.4, 7.3.4, 7.3.8, 7.3.16, 7.3.19, 7.3.21, 7.4.2 - 7.4.3, 8.0
Public	803271	Anonymous	7.1.1 - 7.1.3, 7.1.5, 7.1.8, 7.3.1, 7.3.19 - 7.3.21, 7.4.2
Public	803286	Ian Hill	7.1.1, 7.1.2, 7.1.4 - 7.1.5, 7.2.1 - 7.2.2, 7.2.4, 7.3.8, 7.3.15, 7.3.20 - 7.3.21, 7.4.2, 8.0
Public	803291	Sally Saunders	7.1.1 - 7.1.2, 7.3.2 - 7.3.3, 7.3.5 - 7.3.6, 7.3.19, 7.3.21, 7.5.3
Public	803296	Catherine Osborne	7.1.2, 7.1.8, 7.3.2, 7.3.15, 7.3.19, 7.3.21

Public	803301	Tristan Walz	8.0
Public	803306	Anonymous	8.0
Public	804191	Brigid Cassells	7.1.1, 7.1.3 - 7.1.5, 7.1.8, 7.1.10, 7.2.1 - 7.2.2, 7.2.4, 7.3.1 - 7.3.5, 7.3.8, 7.3.10, 7.3.16, 7.3.19 - 7.3.22, 7.4.2 - 7.4.3
Public	803311	Samuel Gumley	7.1.1 - 7.1.2, 7.3.2, 7.3.8, 7.3.19, 7.3.21, 8.0
Public	803316	Anonymous	8.0
Public	803321	John Van Der Straaten	7.1.1 - 7.1.2, 7.2.2, 7.2.4, 7.3.2, 7.3.4, 7.3.18 - 7.3.19, 7.3.21, 7.4.2, 8.0
Public	803326	Pearl Van Der Straaten	7.1.1 - 7.1.3, 7.2.1 - 7.2.2, 7.2.4, 7.3.1 - 7.3.2, 7.3.4 - 7.3.6, 7.3.8, 7.3.18 - 7.3.19, 7.3.21, 7.4.2 - 7.4.4, 8.0
Public	803331	Nicole Mitchell	8.0
Public	804196	Mark Lintermans	7.1.1 - 7.1.6, 7.1.8, 7.1.10, 7.2.1 - 7.2.2, 7.2.4, 7.3.1 - 7.3.2, 7.3.5, 7.3.8, 7.3.10, 7.3.19 - 7.3.21, 7.4.2 - 7.4.3, 8.0
Public	803336	Murray MacFarlane	8.0
Public	804386	Angela McGill	7.1.1 - 7.1.2, 7.1.5, 7.1.8, 7.2.1 - 7.2.2, 7.2.4, 7.3.2, 7.3.8, 7.3.15, 7.3.18 - 7.3.21, 7.4.2 - 7.4.3, 8.0
Public	803341	Genevieve Hopkins	8.0
Public	803356	Anonymous	8.0
Public	803346	Anonymous	7.1.1 - 7.1.3, 7.2.1, 7.2.4, 7.3.8, 7.3.19 - 7.3.21, 7.4.2 - 7.4.4, 8.0
Public	803376	Sa Pal	7.1.1 - 7.1.2, 7.2.1, 7.2.4, 7.3.2 - 7.3.3, 7.4.2, 8.0
Public	803386	Anonymous	7.1.1 - 7.1.2, 7.2.1 - 7.2.2, 7.2.4, 7.3.2 - 7.3.3, 7.3.5 - 7.3.6, 7.3.20, 7.4.2, 7.5.3
Public	803351	Mrs Belinda Izzard	7.1.1 - 7.1.5, 7.1.8, 7.1.10, 7.2.1 - 7.2.2, 7.2.4, 7.3.1 - 7.3.5, 7.3.8, 7.3.10, 7.3.15 - 7.3.16, 7.3.19 - 7.3.22, 7.4.2 - 7.4.3, 8.0
Public	803361	Anonymous	7.1.1 - 7.1.2, 7.1.5 - 7.1.6, 7.2.1 - 7.2.2, 7.2.4, 7.3.2, 7.3.4, 7.3.6, 7.3.8, 7.3.10, 7.3.15, 7.3.19 - 7.3.21, 7.4.2 - 7.4.3, 8.0
Public	803381	Anonymous	8.0
Public	803366	Emma Johnston	8.0
Public	803371	Kylie Tanner	8.0
Public	804211	Helene Henderson	7.1.1 - 7.1.3, 7.2.1 - 7.2.2, 7.3.3, 7.3.8, 7.3.18 - 7.3.20, 7.4.2
Public	803391	Anonymous	8.0
Public	803401	Lindsay Davy	7.1.1 - 7.1.3, 7.2.1 - 7.2.2, 7.3.2 - 7.3.3, 7.3.8, 7.3.19, 7.3.21, 7.4.2 - 7.4.3, 8.0
Public	803396	Judith Smyth	7.1.1 - 7.1.2, 7.1.5, 7.3.19 - 7.3.21, 7.4.2, 8.0
Public	803411	Colin Gray	7.1.1 - 7.1.2, 7.2.1, 7.3.1 - 7.3.2, 7.3.5 - 7.3.6, 7.3.19, 7.3.21, 7.4.2
Public	803416	Catherine Preston	7.1.1 - 7.1.4, 7.2.1 - 7.2.2, 7.2.4, 7.3.2, 7.3.8, 7.3.11, 7.3.15, 7.3.18 - 7.3.19, 7.3.21, 7.4.2 - 7.4.3, 8.0
Public	804216	Anonymous	7.1.1 - 7.1.3, 7.1.5, 7.1.8, 7.2.2, 7.2.4, 7.3.1, 7.3.4, 7.3.8, 7.3.15, 7.3.21, 7.4.2
Public	803421	Anonymous	8.0
Public	803426	Elizabeth Webber	7.1.1 - 7.1.2, 7.2.1 - 7.2.2, 7.2.4, 7.3.1 - 7.3.2, 7.3.8 - 7.3.9, 7.3.15, 7.3.19 - 7.3.21, 7.4.2, 7.4.4, 7.5.1, 8.0

Public	803431	Anonymous	8.0
Public	803441	Greg Roberts	7.1.1 - 7.1.3, 7.1.6, 7.2.1 - 7.2.2, 7.2.4, 7.3.1 - 7.3.3, 7.3.6 - 7.3.9, 7.3.11, 7.3.18 - 7.3.21, 7.3.23 - 7.3.25, 7.4.2, 7.4.4, 8.0
Public	804221	Nicole Storey	7.1.1 - 7.1.2, 7.2.1 - 7.2.2, 7.2.4, 7.3.1 - 7.3.5, 7.3.8, 7.3.18 - 7.3.21, 7.4.2 - 7.4.4, 8.0
Public	803446	Anonymous	7.1.1 - 7.1.2, 7.2.4, 7.3.19, 7.4.2
Public	803436	Laura Dowling	7.1.2 - 7.1.3, 7.1.5, 7.2.2, 7.3.2, 7.3.10, 7.3.15, 7.3.19 - 7.3.21
Public	803461	Anonymous	7.1.1, 7.1.3, 7.3.1, 7.3.8, 7.3.19
Public	803451	Anonymous	7.1.1, 7.2.1, 7.2.4, 7.3.2, 7.3.15, 7.3.18, 7.3.20 - 7.3.21, 8.0
Public	803456	Anonymous	8.0
Public	804226	Judith Miller	7.1.1 - 7.1.4, 7.1.8, 7.1.10, 7.2.1 - 7.2.2, 7.2.4, 7.3.1 - 7.3.6, 7.3.8 - 7.3.11, 7.3.15 - 7.3.16, 7.3.19 - 7.3.21, 7.4.2 - 7.4.4, 7.5.1, 7.5.3, 8.0
Public	803471	Dianne Gooding	7.1.1 - 7.1.4, 7.2.1, 7.2.3 - 7.2.4, 7.3.2 - 7.3.4, 7.3.8, 7.3.15, 7.3.18, 7.3.20 - 7.3.21, 7.4.2 - 7.4.3
Public	803466	Anonymous	7.1.1 - 7.1.2, 7.3.2, 7.3.19 - 7.3.21, 7.4.2
Public	803476	Peter Gill	7.1.1 - 7.1.2, 7.2.1, 7.2.4, 7.4.2, 7.4.4, 8.0
Public	803486	Philip Harvey	7.2.2, 8.0
Public	804231	Judith Turley	7.1.1 - 7.1.3, 7.1.6, 7.2.1 - 7.2.2, 7.2.4, 7.3.1 - 7.3.4, 7.3.6, 7.3.8 - 7.3.9, 7.3.12, 7.3.18 - 7.3.22, 7.4.2 - 7.4.4
Public	803491	Anonymous	7.1.1
Public	804236	Anonymous	7.1.1 - 7.1.3, 7.2.2, 7.2.4, 7.3.4, 7.3.8, 7.3.11, 7.3.15, 7.3.19, 7.3.21, 7.4.3
Public	803526	Peter Zimmermann	7.1.1 - 7.1.2, 7.2.1, 7.2.4, 7.3.2 - 7.3.3, 7.3.19, 7.3.21, 7.4.2
Public	803501	Anonymous	8.0
Public	803506	Kate O'Connor	7.1.1 - 7.1.2, 7.1.4 - 7.1.5, 7.1.8, 7.3.2, 7.3.4 - 7.3.5, 7.3.8, 7.3.18 - 7.3.21, 7.4.2
Public	803496	Judith Sillis	7.1.1 - 7.1.2, 7.2.1, 7.3.1 - 7.3.2, 7.3.8, 7.3.10, 7.3.19 - 7.3.21, 7.4.2, 8.0
Public	803511	Mary Magdalen Sillis	7.1.1, 7.1.3 - 7.1.4, 7.1.6, 7.2.1, 7.3.8, 7.3.10, 7.3.15, 7.3.18 - 7.3.21, 7.4.2 - 7.4.4, 7.5.1
Public	803516	Johanna Kain	8.0
Public	803521	Victoria Clutterbuck	7.1.1, 7.3.19, 7.3.21, 7.4.1 - 7.4.2, 7.5.2
Public	803531	Robert Elgood	7.1.1, 7.2.1, 7.3.2, 7.3.8, 7.3.19, 7.3.21, 7.4.2 - 7.4.3, 8.0
Public	804241	Elizabeth Doyle	7.1.1 - 7.1.3, 7.1.10, 7.3.2, 7.3.5, 7.3.15, 7.3.19
Public	803536	Eleanor Gregory	7.1.1 - 7.1.2, 7.2.1 - 7.2.2, 7.3.2 - 7.3.3, 7.3.5, 7.3.15, 7.3.19 - 7.3.20
Public	803541	Thelma Oberdorf	7.1.1 - 7.1.3, 7.1.10, 7.2.1 - 7.2.2, 7.2.4, 7.3.1 - 7.3.2, 7.3.5, 7.3.8, 7.3.10, 7.3.19 - 7.3.22, 7.4.2, 7.5.3
Public	803546	Elizabeth Walter	7.1.1 - 7.1.4, 7.1.6, 7.2.1 - 7.2.2, 7.3.7, 7.3.10 - 7.3.12, 7.3.18 - 7.3.19, 7.3.21 - 7.3.23, 7.3.25, 7.4.2, 7.4.5
Public	803551	Anonymous	7.1.1 - 7.1.3, 7.2.1 - 7.2.2, 7.2.4, 7.3.1 - 7.3.2, 7.3.5, 7.3.8, 7.3.11, 7.3.19, 7.3.21, 7.4.3, 8.0
Public	803556	Anonymous	7.1.1 - 7.1.2, 7.2.1 - 7.2.2, 7.2.4, 7.3.8, 7.3.19, 7.3.21, 7.4.3

Public	804246	L Lintermans	7.1.1 - 7.1.5, 7.1.7, 7.1.10, 7.1.12, 7.2.1 - 7.2.4, 7.3.1 - 7.3.2, 7.3.4 - 7.3.5, 7.3.8, 7.3.10 - 7.3.12, 7.3.15 - 7.3.16, 7.3.18 - 7.3.22, 7.4.2 - 7.4.3, 7.5.3
Public	804251	Geoffrey Langford	7.1.1 - 7.1.3, 7.2.1 - 7.2.2, 7.3.6, 7.3.8, 7.3.19 - 7.3.21
Public	804256	Carol Thornton	7.1.1 - 7.1.2, 7.1.8, 7.1.10, 7.2.1 - 7.2.2, 7.3.3, 7.3.5, 7.3.11, 7.3.19 - 7.3.21, 7.4.2
Public	804261	Anonymous	7.1.1 - 7.1.3, 7.1.5, 7.1.8, 7.1.10, 7.2.1 - 7.2.2, 7.2.4, 7.3.2, 7.3.8, 7.3.15, 7.3.19, 7.3.21, 7.4.2 - 7.4.4, 8.0
Public	803561	Phillip Sixsmith	7.1.2, 7.2.4, 7.3.1 - 7.3.6, 7.4.3
Public	803566	Neil Thompson	7.1.1 - 7.1.2, 7.2.4, 7.3.2 - 7.3.4, 7.3.8, 7.3.21, 7.4.2 - 7.4.3
Public	803576	Emily Howarth	8.0
Public	804201	Mark Lintermans	7.1.3 - 7.1.5, 7.2.2, 7.2.4, 7.3.11, 7.3.13
Public	803611	Anonymous	7.1.1, 7.3.19 - 7.3.21, 7.5.3
Public	803571	Kathleen Maher	7.1.1 - 7.1.2, 7.2.1, 7.3.1 - 7.3.3, 7.3.6, 7.3.10, 7.3.19 - 7.3.21, 7.4.2, 7.5.1, 8.0
Public	803581	Cherimoya Violi	7.3.5, 8.0
Public	804406	Carmel Maher	7.1.1 - 7.1.4, 7.2.1 - 7.2.2, 7.2.4, 7.3.2, 7.3.8, 7.3.15, 7.3.19, 7.3.21, 7.4.2 - 7.4.3, 7.5.1
Public	803606	Leonie Wain	7.1.1 - 7.1.3, 7.1.8, 7.1.10, 7.2.1, 7.2.4, 7.3.1 - 7.3.2, 7.3.8, 7.3.15, 7.3.18 - 7.3.19, 7.3.21 - 7.3.22, 7.4.2, 8.0
Public	804146	Loes Slattery	7.1.1 - 7.1.5, 7.1.8, 7.1.10, 7.2.1 - 7.2.2, 7.2.4, 7.3.1 - 7.3.6, 7.3.8, 7.3.10, 7.3.15 - 7.3.16, 7.3.19 - 7.3.21, 7.4.2 - 7.4.4
Public	803626	David Hartog	8.0
Public	803636	Anonymous	7.1.1 - 7.1.2, 7.2.1, 7.2.4, 7.3.2, 7.3.5, 7.3.8, 7.3.19 - 7.3.21, 7.4.2, 8.0
Public	803646	Kris Liddy	8.0
Public	803681	Anonymous	7.1.1, 7.1.3, 7.2.1 - 7.2.2, 7.2.4, 7.3.1 - 7.3.2, 7.3.5 - 7.3.6, 7.3.8, 7.3.19 - 7.3.21, 7.4.2, 8.0
Public	804371	Russell Darroch	7.1.1, 7.1.3, 7.2.1 - 7.2.2, 7.2.4, 7.3.2 - 7.3.6, 7.3.8, 7.3.18, 7.4.2 - 7.4.3, 8.0
Public	804126	Anonymous	7.1.1, 7.2.1 - 7.2.2, 7.3.2 - 7.3.3, 7.3.8, 7.3.11, 7.3.14, 7.3.16, 7.3.26
Public	803686	Kristine Nash	7.1.1 - 7.1.2, 7.1.5, 7.2.1 - 7.2.2, 7.2.4, 7.3.15, 7.3.19 - 7.3.21, 8.0
Public	803691	Kerry Douth	7.1.1, 7.2.1 - 7.2.4, 7.3.1, 7.3.8, 7.3.19, 7.4.2 - 7.4.3
Public	803706	Anonymous	7.1.1 - 7.1.3, 7.2.4, 7.3.1 - 7.3.2, 7.3.8, 7.3.15, 7.3.19 - 7.3.21, 7.4.2
Public	803711	Anonymous	7.1.1 - 7.1.3, 7.2.4, 7.3.1 - 7.3.2, 7.3.8, 7.3.15, 7.3.19 - 7.3.21, 7.4.2
Public	803756	Meagan Jacobs	7.1.2, 7.1.4, 7.2.4, 7.3.2 - 7.3.3, 7.3.8, 7.3.15, 7.3.18 - 7.3.19, 7.3.21
Public	803896	Sharon Rasker	7.1.1, 7.2.1, 7.2.4, 7.3.8 - 7.3.9
Public	803621	Janeya Golding	8.0
Public	803631	Anonymous	7.1.11, 8.0
Public	803641	Joni Lucas	7.1.1 - 7.1.2, 7.2.1, 7.2.4, 7.3.1 - 7.3.2, 7.3.8, 7.3.19, 7.3.21
Public	804266	Gerry Brooks	7.1.1, 7.1.8, 7.1.10, 7.2.4, 7.3.19, 7.3.21, 7.4.3
Public	803651	Anonymous	8.0

Public	803666	Joseph Swartz	7.1.1 - 7.1.2, 7.2.1, 7.2.4, 7.3.2, 7.3.4 - 7.3.5, 7.3.8, 7.3.19 - 7.3.21, 7.4.2 - 7.4.3
Public	803586	Kerry Forman	8.0
Public	803591	Anonymous	7.1.1 - 7.1.2, 7.2.2, 7.2.4, 7.3.1 - 7.3.2, 7.3.15, 7.3.19 - 7.3.21, 7.5.3
Public	804271	Nora Stewart	7.1.1 - 7.1.2, 7.2.1, 7.2.4, 7.3.19, 7.3.21
Public	803601	Anonymous	8.0
Public	803721	Anonymous	7.1.1 - 7.1.2, 7.2.1, 7.2.4, 7.3.2, 7.3.8, 7.3.15, 7.3.21, 7.4.2, 7.4.4, 8.0
Public	804276	Jillian Gregory	7.1.1 - 7.1.2, 7.3.2, 7.3.5, 7.3.19, 7.3.21, 7.4.3
Public	803771	Tiffany Elgood	7.1.1 - 7.1.2, 7.2.4, 7.3.1 - 7.3.2, 7.3.6, 7.3.8, 7.3.21
Public	803716	Anonymous	7.1.1 - 7.1.3, 7.2.1, 7.2.4, 7.3.1, 7.4.4, 8.0
Public	803731	Matthew Wain-Palmer	7.1.1 - 7.1.4, 7.1.8, 7.1.10, 7.2.4, 7.3.2, 7.3.5, 7.3.8, 7.3.18 - 7.3.19, 7.3.21, 8.0
Public	803751	Anonymous	7.1.1, 7.2.1 - 7.2.2, 7.3.2 - 7.3.3, 7.3.19 - 7.3.21, 7.4.2, 8.0
Public	803796	Leonie Walz	8.0
Public	804186	Richard Gregory	7.1.1 - 7.1.5, 7.1.8, 7.1.10, 7.1.12, 7.2.1 - 7.2.4, 7.3.1 - 7.3.6, 7.3.8 - 7.3.10, 7.3.15, 7.3.17 - 7.3.22, 7.3.25, 7.4.2 - 7.4.4, 7.5.1, 7.5.3, 8.0
Public	803616	Rebecca Hartog	8.0
Public	803656	Anonymous	7.3.3, 8.0
Public	804281	Thomas Bridle	7.1.1, 7.1.3, 7.3.2, 7.3.8, 7.3.20 - 7.3.21, 7.4.2, 8.0
Public	803661	Sophie Davis	7.1.1 - 7.1.3, 7.2.1 - 7.2.2, 7.2.4, 7.3.2 - 7.3.3, 7.3.5 - 7.3.6, 7.3.8, 7.3.19 - 7.3.21, 7.4.2, 8.0
Public	803696	Tom & Carolyn Daniel	7.1.1, 7.1.3, 7.2.4, 7.3.1, 7.3.3, 7.3.5, 7.3.8
Public	803746	Anonymous	7.1.5, 7.3.16, 7.3.21, 8.0
Public	804286	Simon Blake	7.1.1, 7.2.1 - 7.2.2, 7.2.4, 7.3.2 - 7.3.3, 7.3.18 - 7.3.21, 7.4.2
Public	803671	Nick Taylor	7.1.1 - 7.1.2, 7.2.1 - 7.2.2, 7.3.2 - 7.3.3, 7.3.8, 7.3.19 - 7.3.21, 7.4.2
Public	803676	Ian Humphries	7.1.1 - 7.1.5, 7.2.1, 7.3.2 - 7.3.3, 7.3.8, 7.3.18 - 7.3.21, 7.4.2
Public	803701	Anonymous	7.1.6, 7.1.12, 8.0
Public	803726	Ann Martin	7.1.1 - 7.1.3, 7.1.5, 7.1.8, 7.1.10, 7.2.1 - 7.2.2, 7.2.4, 7.3.1 - 7.3.5, 7.3.8, 7.3.10, 7.3.15 - 7.3.16, 7.3.19 - 7.3.23, 7.4.3 - 7.4.4, 8.0
Public	803766	Douglas Palmer	7.1.1 - 7.1.2, 7.1.4, 7.2.1, 7.2.4, 7.3.2, 7.3.8, 7.3.10, 7.3.19, 7.3.21, 7.4.2, 7.5.4, 8.0
Public	803791	Anonymous	7.1.1 - 7.1.3, 7.2.4, 7.3.1 - 7.3.2, 7.3.8, 7.3.15, 7.3.19 - 7.3.21, 7.4.2
Public	803846	Nikki McDonald	8.0
Public	803761	Anonymous	7.1.1 - 7.1.3, 7.2.1 - 7.2.2, 7.2.4, 7.3.1, 7.3.19, 7.3.21, 7.4.3, 7.4.5
Public	803736	Anonymous	7.1.5, 7.3.16, 8.0
Public	803741	Rose Ernst	7.1.3, 7.1.12, 7.3.3, 8.0
Public	804291	Carla Rodeghiero	7.1.1 - 7.1.2, 7.2.4, 7.3.2, 7.3.4 - 7.3.5, 7.3.8, 7.3.19, 7.3.21, 7.4.2 - 7.4.3

Public	804391	Emma Brooks Maher	7.1.1, 7.1.3, 7.2.1, 7.2.4, 7.3.8, 7.3.15, 7.3.19, 7.3.21
Public	803831	Anonymous	8.0
Public	803836	Anonymous	8.0
Public	804296	Stuart Gregory	7.1.1 - 7.1.3, 7.2.1 - 7.2.2, 7.2.4, 7.3.2 - 7.3.3, 7.3.8, 7.3.15, 7.3.19 - 7.3.21, 7.4.3
Public	803781	Anonymous	7.1.1 - 7.1.2, 7.2.4, 7.3.1
Public	803786	Anonymous	7.1.1 - 7.1.4, 7.3.2, 7.3.8, 7.3.18 - 7.3.19, 7.3.21, 7.4.2, 7.5.1, 8.0
Public	803801	Geoff Izzard	7.1.1 - 7.1.5, 7.1.8, 7.1.10, 7.2.1 - 7.2.2, 7.2.4, 7.3.2 - 7.3.3, 7.3.10, 7.3.19 - 7.3.20, 7.3.22, 7.4.2, 8.0
Public	803806	Anonymous	8.0
Public	803811	Anonymous	8.0
Public	803821	Anonymous	7.1.3, 7.1.12, 7.2.2, 8.0
Public	803826	John Mitchell	7.1.1 - 7.1.3, 7.2.1, 7.2.4, 7.3.8, 7.3.19 - 7.3.21, 7.4.2, 8.0
Public	803841	Anonymous	8.0
Public	803861	Chris Curtis	7.1.1, 7.1.8, 7.2.2, 7.3.2 - 7.3.4, 7.3.8, 7.3.19, 7.3.21, 8.0
Public	803851	Anonymous	7.1.1 - 7.1.2, 7.1.5, 7.2.1, 7.3.1, 7.3.5 - 7.3.6, 7.3.15, 7.3.19 - 7.3.20, 7.3.22, 7.4.2, 7.4.5
Public	803856	Elizabeth Cameron Wilson	7.1.1 - 7.1.2, 7.2.4, 7.3.1 - 7.3.2, 7.3.4, 7.3.8 - 7.3.9, 7.3.19 - 7.3.21, 7.4.2 - 7.4.3
Public	803866	Michael Gardiner	7.1.1 - 7.1.2, 7.2.1, 7.2.4, 7.3.1, 7.3.19, 7.3.21, 7.4.2, 8.0
Public	803871	Clare Vearing	8.0
Public	803886	Diane Bowden	8.0
Public	803876	Anonymous	7.1.1 - 7.1.3, 7.1.5, 7.1.8, 7.1.10, 7.2.1 - 7.2.2, 7.2.4, 7.3.2, 7.3.8, 7.3.19, 7.3.21, 7.3.25, 7.4.2 - 7.4.4
Public	803881	Anonymous	8.0
Public	803921	Anonymous	7.1.1 - 7.1.3, 7.1.5, 7.2.1 - 7.2.2, 7.2.4, 7.3.1, 7.3.8, 7.3.19, 7.3.21, 7.4.2, 7.5.1, 8.0
Public	804301	Keith Young	7.1.1 - 7.1.3, 7.1.5, 7.3.2, 7.3.8, 7.3.11, 7.3.19, 7.3.21
Public	803916	Alison Inskeep	7.1.1 - 7.1.4, 7.2.1, 7.3.8, 7.3.18 - 7.3.19, 7.3.21, 7.3.23, 7.4.3, 7.4.5, 8.0
Public	803901	David McDonald	7.1.1 - 7.1.3, 7.2.1 - 7.2.2, 7.2.4, 7.3.8, 7.3.19, 7.3.21, 7.4.2 - 7.4.3, 8.0
Public	803906	Jennifer Curtis	7.1.1 - 7.1.2, 7.2.1 - 7.2.2, 7.2.4, 7.3.1 - 7.3.2, 7.3.4, 7.3.18 - 7.3.21, 7.4.2
Public	803911	Anonymous	7.1.3, 7.3.21, 8.0
Public	804306	Anonymous	7.1.1 - 7.1.3, 7.1.5, 7.1.8, 7.1.10, 7.2.1, 7.2.4, 7.3.1, 7.3.8, 7.3.19, 7.3.21, 7.4.2 - 7.4.4, 8.0
Public	804311	Anna Taylor	7.1.1 - 7.1.2, 7.1.8, 7.1.10, 7.2.4, 7.3.1 - 7.3.2, 7.3.4, 7.3.19, 7.3.21, 7.4.1 - 7.4.2, 7.5.1
Public	803926	Anonymous	7.1.1 - 7.1.3, 7.2.1, 7.2.4, 7.3.1 - 7.3.4, 7.3.8, 7.3.14, 7.3.19 - 7.3.21, 7.4.2 - 7.4.3
Public	803936	Anonymous	7.1.1 - 7.1.2, 7.3.2, 7.3.8
Public	804131	Anonymous	7.1.1, 7.1.3 - 7.1.4, 7.1.10, 7.2.1 - 7.2.2, 7.2.4, 7.3.1 - 7.3.6, 7.3.8 - 7.3.10, 7.3.15, 7.3.18 - 7.3.21, 7.3.24 - 7.3.25, 8.0
Public	803946	Pierre Le Charpentier	7.1.1 - 7.1.2, 7.4.2, 8.0

Public	803931	Anonymous	7.1.1 - 7.1.3, 7.3.8, 7.3.19, 7.3.21, 7.4.2
Public	804316	Catherine Moore	7.1.1 - 7.1.3, 7.2.1 - 7.2.2, 7.3.1, 7.3.8 - 7.3.9, 7.3.19 - 7.3.21, 7.4.2
Public	804321	David Watson	7.1.1 - 7.1.6, 7.1.8, 7.2.1 - 7.2.2, 7.2.4, 7.3.1 - 7.3.3, 7.3.5, 7.3.8 - 7.3.10, 7.3.12, 7.3.15 - 7.3.16, 7.3.18 - 7.3.21, 7.3.23, 7.3.25, 7.4.2 - 7.4.4, 7.5.1, 8.0
Public	803951	Anonymous	7.1.1 - 7.1.3, 7.2.1 - 7.2.2, 7.2.4, 7.3.2, 7.3.21, 7.4.2 - 7.4.3, 8.0
Public	803941	Dace Bobets	7.1.1, 7.2.1, 7.3.19 - 7.3.21, 7.4.2
Public	804326	Alastair Gregory	7.1.1 - 7.1.3, 7.1.5 - 7.1.6, 7.1.8, 7.1.10, 7.2.1 - 7.2.2, 7.2.4, 7.3.2, 7.3.8, 7.3.10, 7.3.15, 7.3.19 - 7.3.22, 7.3.24, 7.4.2 - 7.4.3, 7.5.3, 8.0
Public	803956	Anonymous	7.1.1 - 7.1.3, 7.3.2, 7.3.5, 7.3.8, 7.3.19, 7.3.21, 8.0
Public	803961	Anonymous	7.1.1, 7.2.1, 7.3.1, 7.3.21, 7.4.2
Public	804206	Mark Lintermans	7.1.1 - 7.1.2, 7.1.8, 7.2.1 - 7.2.2, 7.2.4, 7.3.2 - 7.3.8, 7.3.10 - 7.3.11, 7.3.15, 7.3.19 - 7.3.21, 7.4.2 - 7.4.3
Public	803971	Alan Hutchinson	7.1.1 - 7.1.3, 7.1.5, 7.1.8, 7.1.10, 7.2.1 - 7.2.2, 7.2.4, 7.3.1 - 7.3.2, 7.3.5, 7.3.8, 7.3.10, 7.3.19 - 7.3.22, 7.4.2 - 7.4.3, 8.0
Public	803966	Anonymous	7.1.1 - 7.1.2, 7.2.1 - 7.2.2, 7.2.4, 7.3.1, 7.3.2 - 7.3.3, 7.3.8, 7.3.15, 7.3.20, 7.4.3
Public	804331	Susan Doran	7.1.1 - 7.1.2, 7.1.6, 7.1.8, 7.1.10, 7.2.1 - 7.2.2, 7.2.4, 7.3.2 - 7.3.3, 7.3.5, 7.3.8 - 7.3.9, 7.3.15, 7.3.18 - 7.3.21, 7.3.23, 7.4.2, 7.4.4, 7.5.3
Public	803981	Philip Beard	7.1.3, 7.3.2, 7.3.5
Public	803991	Chareen Callander	7.1.1 - 7.1.2, 7.3.21, 7.4.2
Public	803986	Anonymous	7.1.1, 7.3.19, 7.3.21, 7.4.2, 8.0
Public	804336	Alison Charlton	7.1.1 - 7.1.3, 7.1.5, 7.2.4, 7.3.8, 7.3.19, 7.4.3
Public	803996	Anonymous	7.1.1 - 7.1.2, 7.3.19, 7.3.21, 7.4.2
Public	804001	Anonymous	7.1.1 - 7.1.2, 7.2.1 - 7.2.2, 7.2.4, 7.3.8, 7.3.15, 7.3.19, 7.4.2
Public	804341	David Webster	7.1.1 - 7.1.3, 7.2.1 - 7.2.2, 7.2.4, 7.3.1 - 7.3.2, 7.3.8, 7.3.15, 7.3.19, 7.3.21, 7.3.23, 7.4.2 - 7.4.4, 8.0
Public	804116	Clare Humberstone	8.0
Public	804076	Richard Miller	7.1.1 - 7.1.2, 7.2.1 - 7.2.2, 7.2.4, 7.3.8, 7.3.19 - 7.3.21, 7.4.3
Public	804346	Anonymous	7.1.1 - 7.1.3, 7.2.1 - 7.2.2, 7.2.4, 7.3.3, 7.3.8, 7.3.15, 7.3.20 - 7.3.21, 7.4.3
Public	804111	Anonymous	8.0
Public	804101	Anonymous	8.0
Public	804106	Olivia Ward	7.1.3, 7.1.6, 7.3.19, 7.4.4, 8.0
Public	804351	Anonymous	7.1.1 - 7.1.3, 7.1.5, 7.1.8, 7.1.10, 7.2.1 - 7.2.2, 7.2.4, 7.3.2 - 7.3.3, 7.3.8, 7.3.16, 7.3.19 - 7.3.22, 7.4.2, 8.0
Public	804081	Anonymous	8.0
Public	804356	Barbara Rayner	7.1.1 - 7.1.3, 7.1.5, 7.2.1, 7.2.4, 7.3.1, 7.3.8, 7.3.19, 7.3.21, 7.4.2 - 7.4.4, 8.0
Public	804096	Anonymous	7.1.1 - 7.1.2, 7.2.1 - 7.2.2, 7.3.4, 7.3.10, 7.3.15, 7.3.20 - 7.3.21, 7.3.24, 8.0
Public	804361	Bridget Whisker	7.1.1 - 7.1.3, 7.1.5, 7.1.8, 7.2.1 - 7.2.2, 7.2.4, 7.3.1 - 7.3.2, 7.3.8, 7.3.10, 7.3.19 - 7.3.21, 7.4.2 - 7.4.3, 8.0

Public	804396	Emma Brooks Maher	7.1.1 - 7.1.3, 7.1.5, 7.1.8, 7.1.10, 7.2.1 - 7.2.4, 7.3.1 - 7.3.6, 7.3.8, 7.3.11, 7.3.13, 7.3.18 - 7.3.21, 7.4.2 - 7.4.4, 7.5.1, 8.0
Public	804401	Emma Brooks Maher	7.1.2
Public	804086	Bruce Amey	7.1.1 - 7.1.3, 7.2.1 - 7.2.2, 7.2.4, 7.3.1, 7.3.8, 7.3.19, 7.3.21, 7.4.2 - 7.4.4, 8.0
Public	804091	Jenny Amey	7.1.1 - 7.1.2, 7.2.1, 7.2.3, 7.3.1, 7.3.19, 7.3.21, 7.4.2, 8.0
Public	804411	Maureen Elgood	7.1.1 - 7.1.3, 7.2.1 - 7.2.2, 7.2.4, 7.3.1 - 7.3.6, 7.3.8 - 7.3.10, 7.3.16, 7.3.19 - 7.3.21, 7.4.2 - 7.4.4
Public	804416	Maureen Elgood	7.1.1, 7.2.1 - 7.2.2, 7.3.19, 7.3.21, 7.4.2, 8.0
Public	804421	Maureen Elgood	7.1.1, 7.2.1, 7.3.8, 7.3.19
Public	804376	Russell Darroch	7.1.1 - 7.1.3, 7.1.8, 7.2.1 - 7.2.2, 7.2.4, 7.3.8, 7.3.19, 7.3.21, 7.4.2 - 7.4.3, 8.0
Public	804381	Russell Darroch	7.1.1 - 7.1.3, 7.2.1 - 7.2.2, 7.2.4, 7.3.8, 7.4.2, 7.4.3, 8.0
Public	804121	Anonymous	7.1.1, 7.1.8, 7.3.19, 7.3.21, 8.0
Public	804686	Anonymous	7.1.1 - 7.1.2, 7.1.8, 7.3.19 - 7.3.21, 8.0
Public	804691	Anonymous	7.1.1 - 7.1.2, 7.1.8, 7.1.10, 7.3.2, 7.3.5, 7.3.8, 7.3.19, 7.3.21, 7.4.2
Public	804696	Stephanie Parker	7.1.1 - 7.1.2, 7.1.4, 7.2.4, 7.3.2 - 7.3.3, 7.3.8, 7.3.18 - 7.3.21, 7.4.2 - 7.4.4, 7.5.1
Public	804701	Anne Maher	7.1.1 - 7.1.2, 7.1.12, 7.2.4, 7.3.2 - 7.3.3, 7.3.8, 7.3.19, 7.3.21, 8.0
Public	804706	Anonymous	7.1.1 - 7.1.2, 7.2.4, 7.3.1 - 7.3.3, 7.3.8, 7.3.21, 7.4.2, 8.0
Public	804711	Judy Kemp	7.1.1 - 7.1.2, 7.2.1 - 7.2.2, 7.2.4, 7.3.8, 7.3.19, 7.3.21, 7.4.2 - 7.4.3, 8.0
Public	804716	Jillian Gregory	7.1.1 - 7.1.3, 7.1.5, 7.1.8, 7.2.1 - 7.2.2, 7.2.4, 7.3.1 - 7.3.5, 7.3.8, 7.3.10, 7.3.15 - 7.3.16, 7.3.19 - 7.3.23, 7.4.2 - 7.4.4
Public	804721	Dimity Davy	7.1.1 - 7.1.2, 7.2.4, 7.3.2, 7.3.8, 7.3.19 - 7.3.22, 7.4.2, 7.5.1
Public	804741	Anonymous	7.1.1 - 7.1.2, 7.2.4, 7.3.2, 7.3.8, 7.3.19, 7.3.21
Public	804746	Michelle Barclay	7.1.1 - 7.1.2, 7.2.1, 7.2.4, 7.3.2, 7.3.5, 7.3.8, 7.3.15, 7.3.19 - 7.3.21, 7.4.2 - 7.4.3, 8.0
Public	804751	Richard & Kay Adams	7.1.1 - 7.1.2, 7.1.4, 7.2.1 - 7.2.2, 7.2.4, 7.3.1 - 7.3.3, 7.3.5, 7.3.8, 7.3.10, 7.3.19 - 7.3.21, 7.4.2, 8.0
Public	804756	Richard Michael Bourke	7.1.1 - 7.1.2, 7.3.2 - 7.3.3, 7.3.8, 7.3.19 - 7.3.21, 7.4.2 - 7.4.3

Appendix B: Code Frame Used for Analysing Submissions

Below is the code frame developed by Mecone for the analysis of the 319 submissions

7. ISSUES RAISED IN COMMUNITY AND PUBLIC SUBMISSIONS

7.1 THE PROJECT

7.1.1 Site location

- Site is severely constrained due to Crown Land classification, unresolved Aboriginal land claims and public road through middle of site.
- Site is inconsistent with DoE's school site selection and development guidelines re multiple ownership and Aboriginal land claims.
- School will destroy town centre fabric and amenity.
- Project will restrict access to/impinge upon Bungendore Park. Park should remain reserved for community purposes.
- Bungendore Park as a traditional 200m x 200m town square will be destroyed.
- Inappropriate to place high school adjacent to railway due to suicide risk.
- Location requires removal of pool, community hall, sporting, health and child care facilities.
- Inappropriate to locate high school adjacent to primary school.
- Urban location fails to take advantage of local agricultural and equine resources.
- Location is unsuitable for emergency evacuation due to train line, narrow roads and flooding.

7.1.2 Site size and school capacity

- Site does not meet recommendation for 4ha site area for a regional school in DoE's school site selection and development guidelines.
- Site too small to cater for future expansion. Several submissions express concern re user creep into park as the school grows.
- Education quality will be reduced given small site size and lack of recreational space.
- School fails to cater for anticipated population growth.
- Demand will exceed capacity in only a few years (based on information obtained from DoE under GIPA request). Specifically, the school will already exceed capacity in 2026 (i.e., within 3 years of opening) and will be 25% over capacity by 2036.

7.1.3 Built form, design, and materiality

- 2-storey development not compatible with the rural and heritage context.
- Architectural style and materiality not in keeping with context. Concrete and fibre cement as inappropriate.
- Design contradicts local height limit.
- Design ignores current trends in education which focus on outdoor education and connection to nature.
- Poor planning to split Ag Plot from main school. Appears to be an ad hoc effort to increase site size.
- Layout results in limited spectator areas on Mick Sherd Oval.
- Reuse of Council building is less about sustainability and more about offsetting an inherited liability.

- Joint administration building – the front office of primary school should remain as it is unreasonable for primary school students to cross the road to the new building.
- Hall/gym should incorporate a stage, soundroom, etc. to foster creative talent.
- Outdoor space should be provided for playgroup at community centre.

7.1.4 Ag Plot

- Ag Plot is subject to flooding.
- The Common is an inappropriate location for Ag Plot due to Tiger Snakes.
- Potential for conflict between Ag Plot and dogs in off-leash area.
- Ag Plot is too small for the intended use.

7.1.5 Fencing

- Fencing around school will disrupt village atmosphere, is not in keeping with town centre aesthetic and will alienate community.
- Fencing of Ag Plot is intrusive and incompatible with the Common.

7.1.6 Landscaping

- Concerning amount of impermeable surface. Heat island not considered. Unclear whether COLAs will be paved.
- Preferable to use exotic deciduous species rather than natives to achieve denser shade in summer and sunlight in winter.
- Landscaping should be complimentary to local region and soften the new buildings.
- Proposed trees will take many years to mature, resulting in significant interim impacts on tree canopy.
- Project makes no significant contribution to QPRC's Vegetation and Heat Adaption Strategy.
- Item 22 on landscape plan identified as open space, but this has previously been identified as an area for future school expansion.
- There should be additional mature tree plantings.

7.1.7 Staging

- EIS says community uses will remain operational until Building E is complete and that there will be no period of time during which community uses are unavailable. This is incorrect: Bungendore Community Centre users have been given notice to vacate by the end of 2021.

7.1.8 Hours

- Proposed hours of operation from 8am to 5pm mean that the community will be unable to utilise Mick Sherd Oval during daylight hours for much of the year.

7.1.9 Signage

- Large, illuminated signage is inappropriate in the rural town context.

7.1.10 Joint use arrangements

- EIS provides insufficient information re joint use arrangements.

7.1.11 School name

- School name should be a Ngunawal name to help build knowledge of Ngunawal cultural heritage, respect and pride.

7.1.12 Other project issues

- Project should provide purpose-built music, performance and creative arts facilities.
- Students should have access to the oval during breaks which will greatly benefit students.
- The project is understood to be the first step for an eventual site to be established in an out-of-town, more spacious environment in the future.
- Resource sharing across high schools e.g. Braidwood and Queanbeyan
- Inclusion for students with disabilities
- Proposal should include international language facilities

7.2 PROCEDURAL MATTERS

7.2.1 Site selection process

- Process was rushed, flawed and lacked transparency.
- Confusion as to why other greenfield sites were not selected.
- Grounds for not going ahead with other sites (obtained from DoE under GIPA request) are spurious.
- Process was driven by political expediency and affected by corruption.

7.2.2 Adequacy of consultation

- Level and quality of consultation inadequate.
- DoE did not provide a clear way to object until now.
- Community was not adequately represented during consultation. Very few people participated in survey.
- No evidence of consultation with Mick Sherd Oval users, community centre, swimming club and St Mary's church.
- Key matters not addressed during consultation, namely location and road closure/road disruptions.
- Community was lied to re location, traffic, alternative sites and Crown Land issues.
- Released information was promotional/generic.
- Proponents actively suppressed dissent by restricting access to consultation sessions and deleting public commentary in open forums.
- Proponents have vowed to ignore opposition.
- Unclear who the "community representative" was in the PRG and how they were selected.
- No evidence of consultation with Bungendore Country Music Muster committee.

7.2.3 Aboriginal land claims

- Issue not addressed satisfactorily.

7.2.4 Consistency with SEARs

- EIS does not provide adequate consideration of alternatives as required by SEARs. Insufficient discussion of other sites.
- SIA does not satisfy SEARs.
- EIS does not provide complete description of development in that it fails consider key surrounding development (e.g., Bungendore Preschool, Bungendore Public School, Abbeyfield development, and the East Bungendore, North Elmslea and Ashby developments).
- EIS does not adequately set out need and justification for the development.
- EIS does not provide details of construction, commissioning and timing.
- EIS does not provide estimate of new and retained jobs along with methodology.
- EIS does not provide details of proposed before and after school services.
- EIS does not consider relevant legislation policies and guidelines including CLMA, Strategic Plan for Crown Land 2031, EFSG, School Site Selection and Development Guidelines, Roads Acct 1993 and Improving Road Safety: School Zones.
- EIS fails to provide an adequate response to GANSW advice.
- Project doesn't adequately address DCP.

7.2.5 Development contributions

- Inappropriate not to collect development contributions given the proposal's huge drain on local infrastructure.

7.2.6 Other procedural issues

- Insert new issue if required.

7.3 ECONOMIC, ENVIRONMENTAL AND SOCIAL IMPACTS

7.3.1 Economic impacts

- Impacts on local businesses and reduction in tourism due to loss of historical character.
- Cost appears high compared to new Jerrabomberra high school. Bungendore is not getting good value for money.
- Two storeys will require installation of costly lifts to meet accessibility requirements.
- Relocation of community facilities will impose significant financial cost on community.

7.3.2 Transport – impacts on network operation

- Road network cannot accommodate the increase in traffic. Many submissions point to impacts to area around post office and primary school.
- School zones will cause congestion.
- Majara St is a major thoroughfare; closure will cause significant issues including diversion of traffic to residential streets. Many submissions point to impacts on travel between Bungendore and Elmslea.
- No consideration given to cumulative impacts associated with nearby child care centre.

- Making McCusker Dr one-way will cause inconvenience.
- Carpooling for teaching staff as a method to minimise traffic is unrealistic.
- Relocation of bus stop to southern side of Gibraltar St will cause chaos.

7.3.3 Transport – safety

- Increased car and bus traffic will pose safety risks to children.
- Influx of newly licensed drivers in close proximity to primary school raises safety concerns.
- Proposed parking along Turallo Tce raises safety concerns associated with reversing vehicle movements given the location on a rising bend combined with increased traffic movements.
- Increased traffic at the T-junction of Turallo Tce with Molonglo St/Tarago Rd is a problematic given line-of-sight issues.
- Kiss-and-drop areas on Turallo Tce and Gibraltar St pose unacceptable safety risk due to traffic and sight lines.
- Dangerous for high school students to share bus zone with primary school students.
- Improve pedestrian crossing across Kings Highway to facilitate safe travel. Pedestrian island is not appropriate for students.

7.3.4 Transport – adequacy of analysis

- Analysis excludes residents of outlying areas and students who currently attend private schools. This is described in GHD's report as a "major limitation to the assessment of the potential bus catchment".
- Data was only collected over a single 3-hour period. This is insufficient.
- Analysis neglects impacts caused by periodic flooding of McCusker Dr and Turallo Tce
- Traffic data does not match counts conducted by locals.
- No evidence of traffic analysis equipment used in the area.

7.3.5 Transport – vehicular access and parking

- Proposed car parking is inadequate.
- Unclear why station forecourt parking is not included in the proposal despite this being noted in previous project information. Delineated parking in train station car park should be provided.
- Objection to loss of on-street parking.
- No allocation for student car parking.
- On-street parking is already difficult during school peak hours, and the project will exacerbate this issue.
- New parking should not take up existing green space.
- 76 bike spaces are inadequate.
- New Turallo Tce parking will impact residential amenity along the road.
- Objection to new roundabouts; these will require tree removal, add concrete and disrupt the network.

7.3.6 Transport – pedestrian network

- Surrounding roads and streets have no guttering or footpaths are not equipped to handle the high school pedestrian traffic.

- TA contains errors in its description of the active transport network and offers illogical upgrade recommendations.

7.3.7 Transport – construction traffic and parking:

- Proposed heavy vehicle route along Turallo Tce is unsuitable due to impacts on residential amenity and pedestrian safety.
- Proposal to locate construction parking in Council carpark does not consider the need to accommodate 35 Council staff within the Council building during works mentioned elsewhere in EIS. Construction vehicles will likely spill out into streets.
- Inappropriate to use Butmaroo St for construction parking as it a residential street with no kerb and is used heavily by pedestrians.

7.3.8 Heritage

- General:
 - 2-storey height not in keeping with the heritage context.
 - Proposal will compromise heritage value of the town centre.
- Grave – proposal will impact suspected grave in southeast corner of site.
- War Memorial – significance will be eroded. Several submissions point to the bus bays and kiss-and-drop in front of memorial as an issue.
- Railway station – proposal will compromise State-significant railway precinct.
- 63 Turallo Tce (signalman's cottage) – proposal will affect visual outlook from 63 Turallo Tce (railway signalman's cottage) and diminish the cultural significance of the property.
- Gallipoli pines – concern re impacts on Gallipoli pines.
- Heritage report inadequate:
 - Report neglects non-built heritage (i.e., social and civic) associated with the park.
 - Report is incomplete given access to State archives and non-digitised maps was unavailable due to Covid restrictions.
 - Report doesn't recognise Bungendore Park as a traditional 200m x 200m town square.

7.3.9 Aboriginal heritage

- Aboriginal heritage of park never fully investigated.

7.3.10 Tree removal

- Mature tree removal/loss of green canopy unacceptable.

7.3.11 Noise – operational

- General noisy nature of high school will impact town amenity.
- Railway noise may interfere with student learning.
- Particular concern raised by owner of 63 Turallo Tce re traffic noise and outdoor play space noise.
- Exceedance of noise levels by outdoor activity is unacceptable. Inappropriate to locate hall/gym and sports courts directly opposite residences on Turallo Tce.
- Noise assessment is flawed given it was undertaken when Covid health orders were in place and there was reduced traffic.

7.3.12 Noise – Construction

- Objection to proposed extended construction hours.

7.3.13 Lighting

- Lighting report is overly generic.
- Sports courts should not be flood-lit due to amenity impacts.

7.3.14 Privacy

- Proposal will impinge upon privacy of 63 Turallo Tce.

7.3.15 Contamination

- Lead contamination has been identified in the railway corridor and poses a safety risk to students. Construction works will mobilise the lead contaminants.
- Location of sampling sites not clearly identified.

7.3.16 Views

- Development will generally impact surrounding views.
- New roundabout will impact views to surrounding heritage items.
- EIS fails to consider views to Gibraltar Hill and views to and from railway station and other heritage sites.

7.3.17 Overshadowing

- Buildings will cause overshadowing of Mick Sherd Oval during winter months.

7.3.18 Flooding

- McCusker Dr and Tarago Rd are subject to flooding, which will affect access to the school.
- Ag Plot is unsuitable for the intended use due to flooding.

7.3.19 Social – loss of green space/recreation areas

- Loss of portion of park/removal of some of the town's primary green space.
- Inability to use oval on weekdays during school hours.
- Impingement upon popular off-leash park.
- Mick Sherd Oval will be overutilised due to shared use agreement.

7.3.20 Social – loss of pool and other community facilities

- Strong objection to removal of pool. Pool funded by local community.
- Removal of pool detrimental to primary school children who can currently walk there.
- Upheaval for community centre uses.
- Unclear whether all facilities/uses in the existing community centre will be replaced.

7.3.21 Social – way of life

- Park and village amenity reduced.
- Sports, ANZAC Day, entertainment and other cultural gatherings will be affected.
- Town centre fabric disrupted and access restricted.

7.3.22 Social – other

- Sports Hub is unrelated to the project and should not be used for justification of loss of community facilities.
- Inappropriate to locate school adjacent to the town's two pubs.
- Relocation of the Rotunda and Bush Balladeers Place to Frogs Hollow is inappropriate because the area is a floodway and separated from the town, and performances will be disrupted by heavy vehicle traffic.
- General reference to Mick Sherd Oval throughout EIS minimises the broader social significance of Bungendore Park.

7.3.23 Sustainability

- Project does not take into account global warming as it assumes heavy car use.
- Passive solar design principles not implemented.
- Bungendore relies on groundwater for potable water. Project fails to consider the sustainability impacts on the groundwater supply.

7.3.24 Biodiversity

- Loss of habitat due to tree removal.

7.3.25 Soil and groundwater

- EIS doesn't address soil runoff from Ag Plot.

7.3.26 Waste

- Owner of 63 Turallo Tce takes issue with location of waste enclosure near their property. Concerns relate to health, smell and noise.

7.3.27 Other economic, social and environmental impacts

- Insert new issue if required.

7.4 JUSTIFICATION AND EVALUATION OF PROJECT

7.4.1 Need for school

- Need for a new high school in Bungendore area is questionable. Preferable to upgrade existing schools.

7.4.2 Alternative site

- Ashby property on Tarago Road or other greenfield site is more suitable.

7.4.3 Consistency with legislation

- Project contrary to Crown Land Management Act 2016.
- Project contrary to section 38A and 38B of Roads Act 1993.
- Project inconsistent with EP&A Act object “to promote the orderly and economic use of land”.
- Project inconsistent with RE1 zone objectives.
- Project inconsistent with Education SEPP design quality principles.
- Project inconsistent with the principles of ESD in schedule 2 of the Reg.

7.4.4 Consistency with strategic plans

- Project inconsistent with South East and Tablelands Regional Plan 2036, specifically the strategic goal of “healthy and connected communities”.
- Project inconsistent with LSPS, specifically the vision for Bungendore as a “vibrant town with historic village character that attracts visitors and residents alike”.
- Project inconsistent with Bungendore Structure Plan by failing to provide for anticipated population growth.
- Project inconsistent with Better Placed by failing to achieve “better fit – contextual, local and of its place”.
- Project inconsistent with “Draft Greener Places Design Guide”.

7.4.5 Other issues relating to project justification and evaluation

- Agricultural High School/building on strategic relationships e.g. Mulloon Institute, CSIRO, ANU, University of Canberra

7.5 ISSUES BEYOND SCOPE OF PROJECT

7.5.1 Abbeyfield development

- Objection to changes to Abbeyfield project (relocation and delays)

7.5.2 Braidwood Central School

- Braidwood Central School may suffer due to students leaving the school to attend Bungendore.

7.5.3 Sports hub

- The new sports hub is not a suitable replacement for the existing community facilities.

7.5.4 Other issues beyond the project scope

- No access to primary school from Turallo creek footbridge from Elmslea.

8.0 SUMMARY OF SUPPORTING STATEMENTS

- I support a new high school but have reservations
- Need for education facility in Bungendore
- Central location/proximity to services and facilities
- Positive addition to community/regional centre

- Fully support the proposal – no objections
- Access to/sharing of education facilities for primary and secondary students
- Safety and accessibility
- Minimal impact to recreation area and community facilities
- Better new facilities e.g. community centre, sports centre
- Supporting economic and population growth
- Supportive of design and size
- Supports active lifestyles and improved quality of life
- Employment opportunities
- Limited impact on traffic, parking and pedestrian network
- Cohesive to way of life and connecting the community
- Re-use of Council building
- Heritage significance/value will not be compromised
- Additional facilities for the community e.g. access to school gym, basketball courts and school hall
- Adequate consultation and access to information
- Other comment e.g. school should be open to years 7-12 from the beginning
- Potential for future development
- Development can continue despite contamination e.g. with remediation

The information contained herein is believed to be reliable and accurate, however, no guarantee is given as to its accuracy and reliability, and no responsibility or liability for any information, opinions or commentary contained herein, or for any consequences of its use, will be accepted by Micromex Research, or by any person involved in the preparation of this report.



Education

