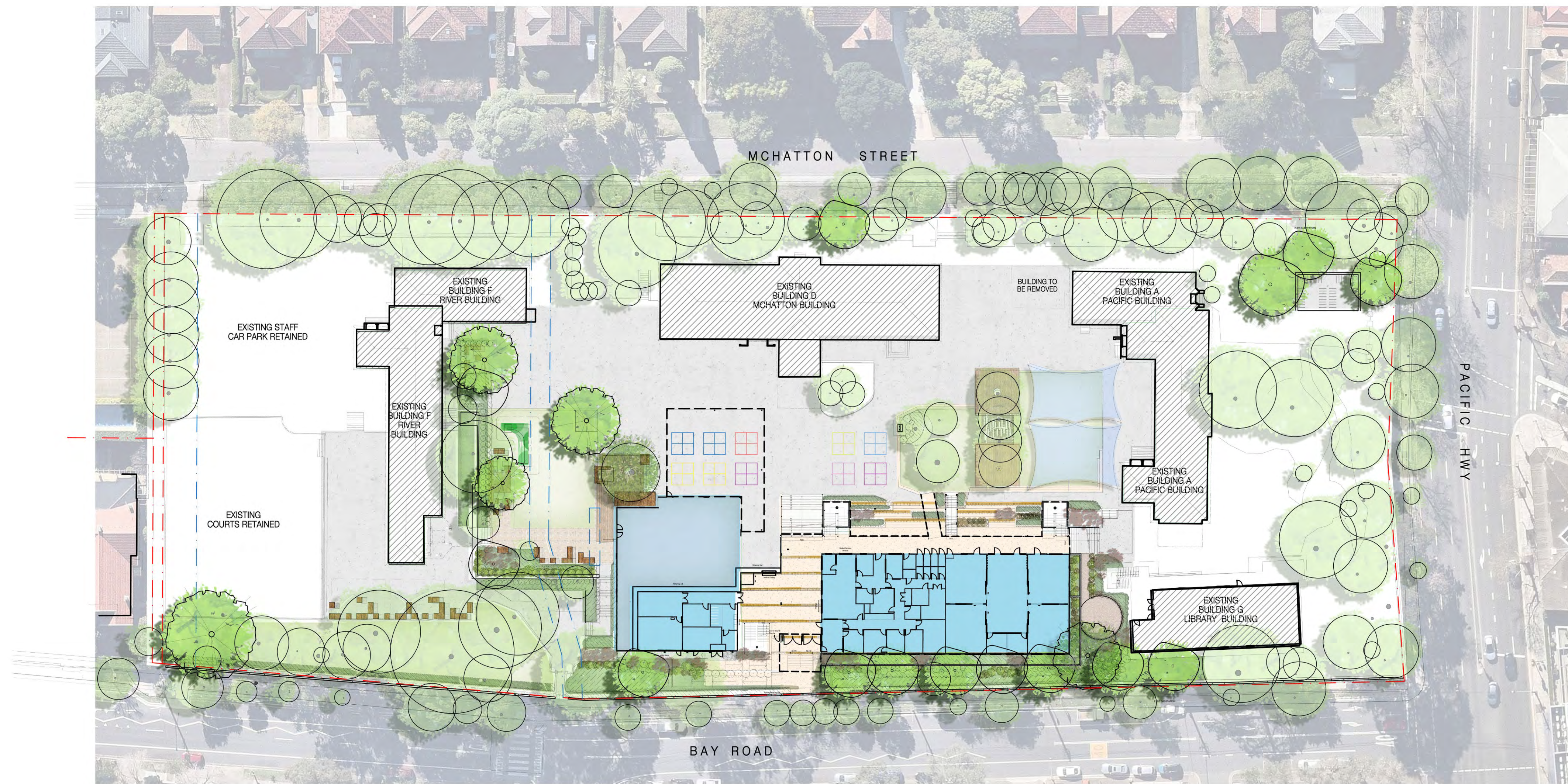


NORTH SYDNEY PUBLIC SCHOOL

LANDSCAPE DRAWINGS FOR SSDA



DRAWING SCHEDULE

DRAWING NO.	DRAWING TITLE	SCALE
LA000	COVER SHEET	NTS
LA001	LANDSCAPE MASTERPLAN	1:400 @ A1
LA101	LANDSCAPE DETAIL PLAN 1	1:100 @ A1
LA102	LANDSCAPE DETAIL PLAN 2	1:100 @ A1
LA103	LANDSCAPE DETAIL PLAN 3	1:100 @ A1
LA201	LANDSCAPE SECTIONS	AS SHOWN
LA301	PLANTING CHARACTER	N/A
LA401	TREE RETENTION/REMOVAL PLAN	1:400 @ A1
LA501	STANDARD DETAILS	AS SHOWN



NTS

COVER SHEET

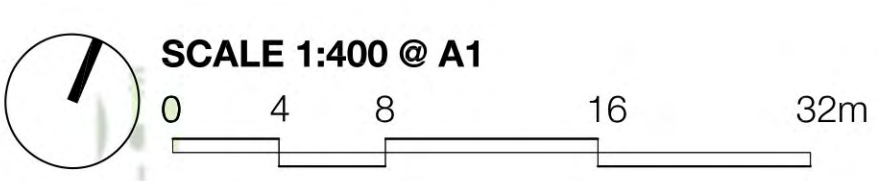
project: North Sydney Public School
client: NSW Education
date: 11.11.2021
revision: C
drawn: BH
checked: AL

TaylorBrammer
 TAYLOR BRAMMER LANDSCAPE ARCHITECTS PTY LTD
 SYDNEY STUDIO
218 Oxford Street, Sydney, NSW, 2000. E: info@taylorbrammer.com.au T: 61 2 9557 8888
 Copyright © Taylor Brammer Landscape Architects Pty Ltd. 4026 61 988 724 988



LEGEND

- 01** NEW MULTIPURPOSE HALL
- 02** NEW COVERED OUTDOOR LEARNING AREA (COLA)
- 03** NEW ADMINISTRATION, LIBRARY AND CLASSROOM FACILITIES
- 04** NEW FORMALISED ACCESSIBLE ENTRY WITH FEATURE PAVING INLAYS
- 05** BLOCK SEATING ELEMENTS OF VARIED SIZES
- 06** YARNING CIRCLE WITH TREE REPLISHMENT PLANTING
- 07** IDENTIFIED SIGNIFICANT TREE (TREE 16) RETAINED AND PROTECTED
- 08** NEW PEDESTRIAN CONNECTION TO BUILDING G
- 09** EXISTING BITUMEN SURFACE TREATED WITH APPLIED ACRYLIC FINISH
- 10** EXISTING HERITAGE ENTRY GATE AND FENCE RETAINED WITH NEW PLANTING TO BAY ROAD FRONTAGE
- 11** TERRACED CONNECTION BETWEEN LOWER GROUND LEVEL AND EXISTING SYNTHETIC TURF PLAY AREA
- 12** NEW FIXED PLAY AND ARTIFICIAL TURF AREAS
- 13** NEW COVERED BICYCLE PARKING AREA (55 BIKES)

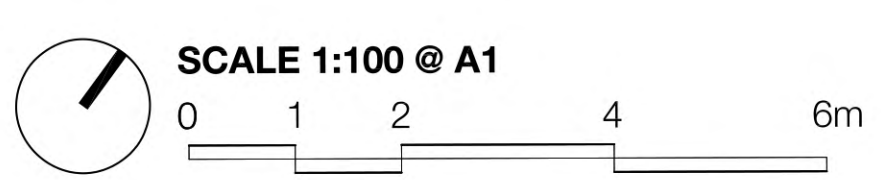
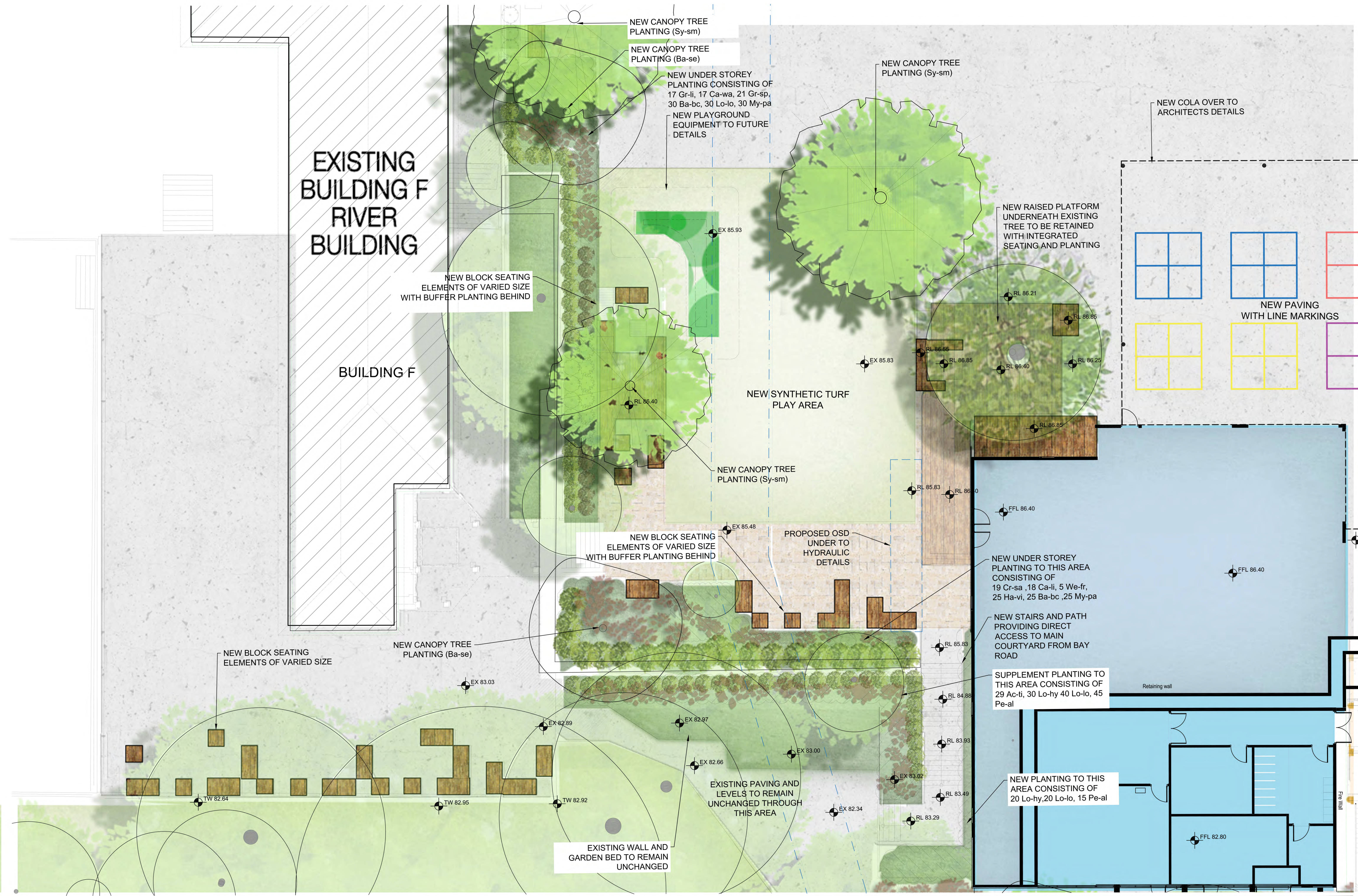


LANDSCAPE MASTERPLAN

LEGEND

- SITE BOUNDARY
- EXISTING TREE RETAINED
- PROPOSED TREE
- PROPOSED SEATING
- PROPOSED NEW GARDEN
- PROPOSED NEW PAVEMENT
- EXISTING RAISED ACCESSIBLE PLATFORM UNDER EXISTING TREE
- PROPOSED NEW SYNTHETIC TURF

project: North Sydney Public School
 client: NSW Education
 date: 11.11.2021
 revision: F
 drawn: BH
 checked: AL

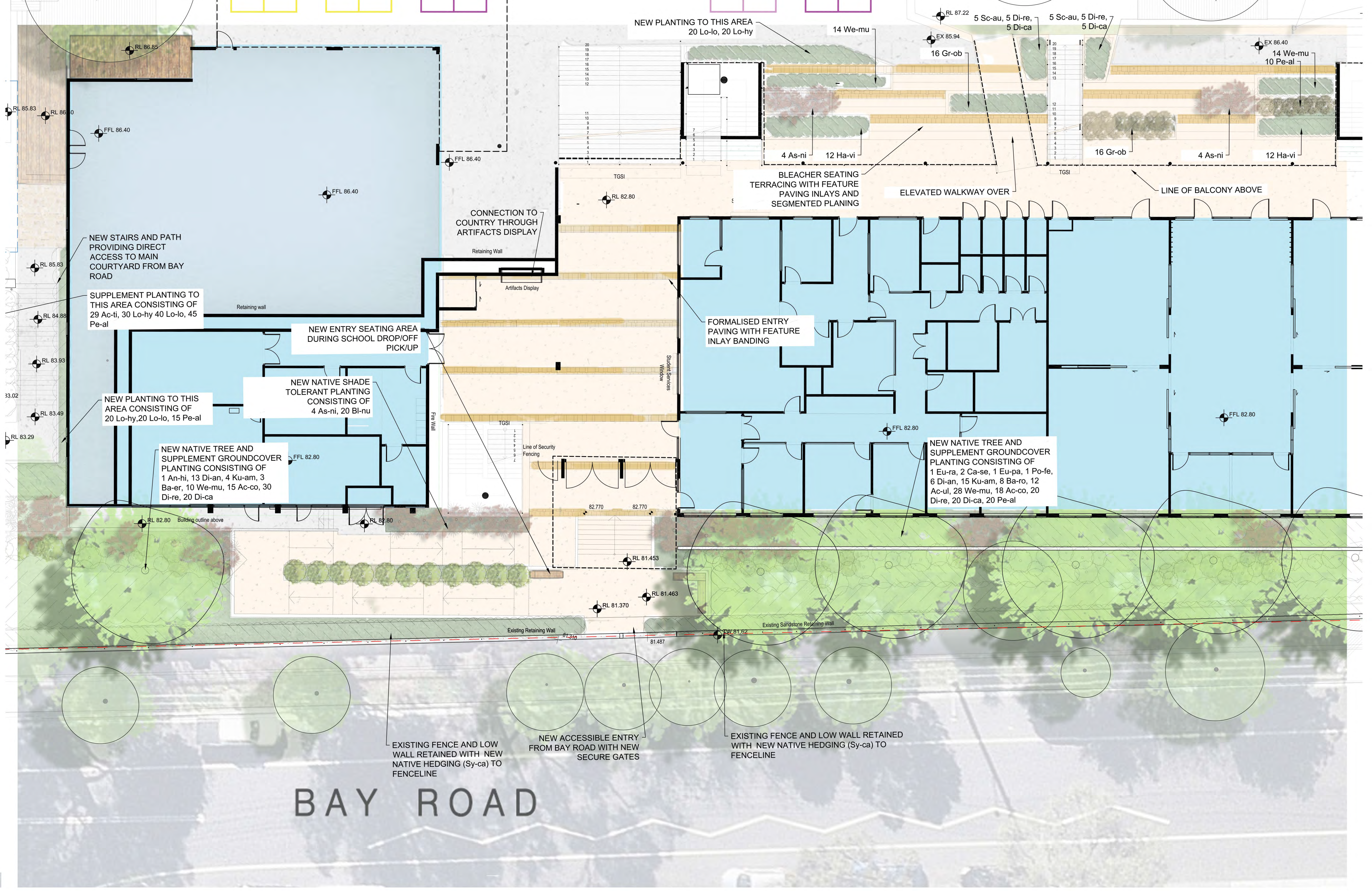


LANDSCAPE DETAIL PLAN 1

LEGEND

- SITE BOUNDARY
- EXISTING TREE RETAINED
- PROPOSED TREE
- PROPOSED SEATING
- PROPOSED NEW GARDEN
- PROPOSED RAISED ACCESSIBLE PLATFORM UNDER EXISTING TREE
- PROPOSED NEW SYNTHETIC TURF

project: North Sydney Public School
client: NSW Education
date: 25.08.2021
revision: D
drawn: BH
checked: AL



NEW STAIRS AND PATH PROVIDING DIRECT ACCESS TO MAIN COURTYARD FROM BAY ROAD

SUPPLEMENT PLANTING TO THIS AREA CONSISTING OF 29 Ac-ti, 30 Lo-hy 40 Lo-lo, 45 Pe-al

NEW PLANTING TO THIS AREA CONSISTING OF 20 Lo-hy, 20 Lo-lo, 15 Pe-al

NEW NATIVE TREE AND SUPPLEMENT GROUNDCOVER PLANTING CONSISTING OF 1 An-hi, 13 Di-an, 4 Ku-am, 3 Ba-er, 10 We-mu, 15 Ac-co, 30 Di-re, 20 Di-ca

NEW ENTRY SEATING AREA DURING SCHOOL DROP/OFF PICK/UP

NEW NATIVE SHADE TOLERANT PLANTING CONSISTING OF 4 As-ni, 20 Bl-nu

NEW PLANTING TO THIS AREA 20 Lo-lo, 20 Lo-hy

BLEACHER SEATING TERRACING WITH FEATURE PAVING INLAYS AND SEGMENTED PLANING

FORMALISED ENTRY PAVING WITH FEATURE INLAY BANDING

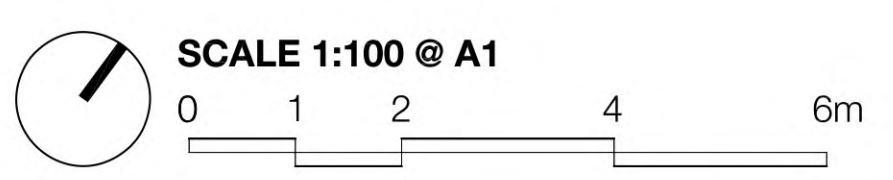
NEW NATIVE TREE AND SUPPLEMENT GROUNDCOVER PLANTING CONSISTING OF 1 Eu-ra, 2 Ca-se, 1 Eu-pa, 1 Po-fe, 6 Di-an, 15 Ku-am, 8 Ba-ro, 12 Ac-ul, 28 We-mu, 18 Ac-co, 20 Di-re, 20 Di-ca, 20 Pe-al

EXISTING FENCE AND LOW WALL RETAINED WITH NEW NATIVE HEDGING (Sy-ca) TO FENCELINE

NEW ACCESSIBLE ENTRY FROM BAY ROAD WITH NEW SECURE GATES

EXISTING FENCE AND LOW WALL RETAINED WITH NEW NATIVE HEDGING (Sy-ca) TO FENCELINE

BAY ROAD

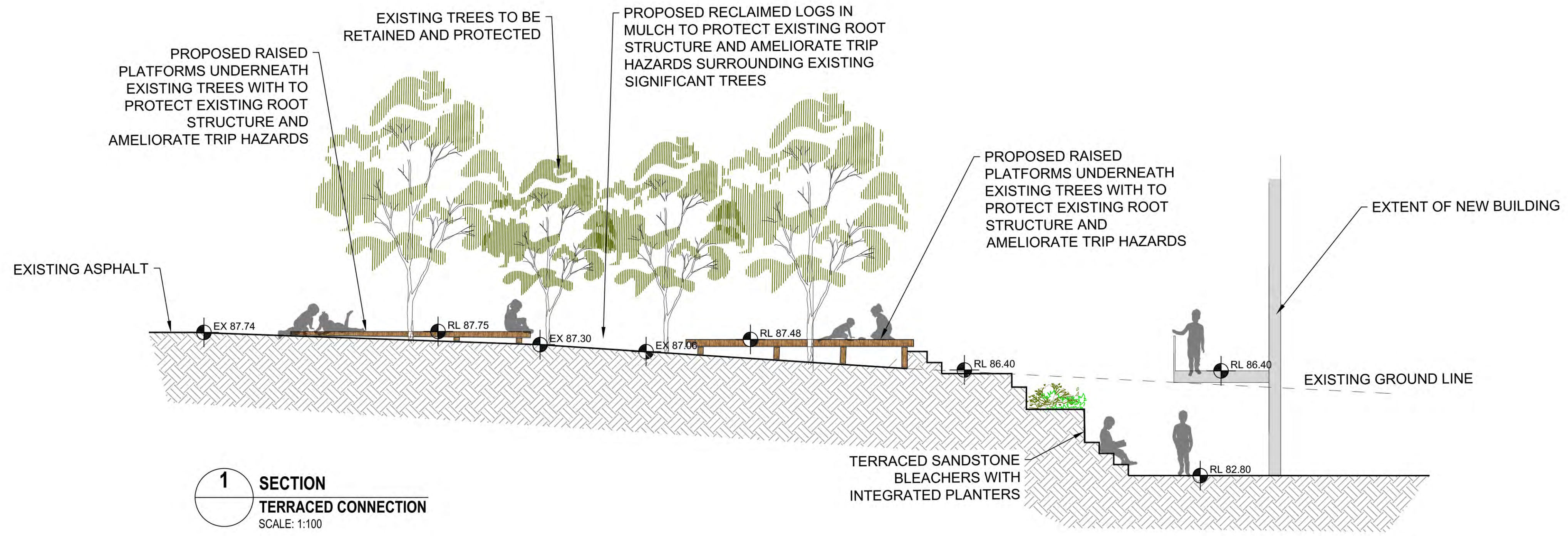


LANDSCAPE DETAIL PLAN 3

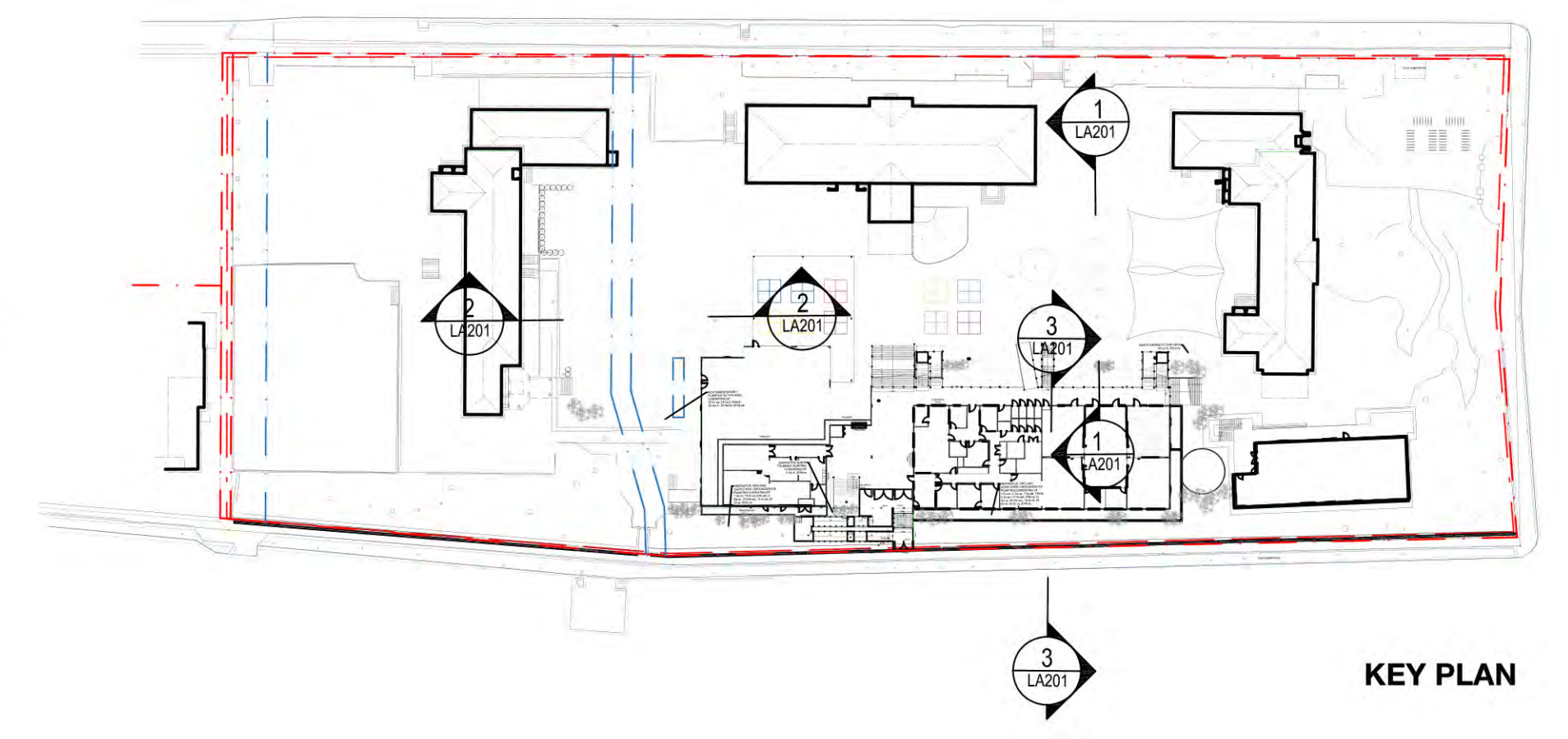
LEGEND

- SITE BOUNDARY
- PROPOSED NEW PAVEMENT
- EXISTING TREE RETAINED
- PROPOSED TREE
- PROPOSED SEATING
- PROPOSED NEW GARDEN
- PROPOSED RAISED ACCESSIBLE PLATFORM UNDER EXISTING TREE
- PROPOSED NEW SYNTHETIC TURF

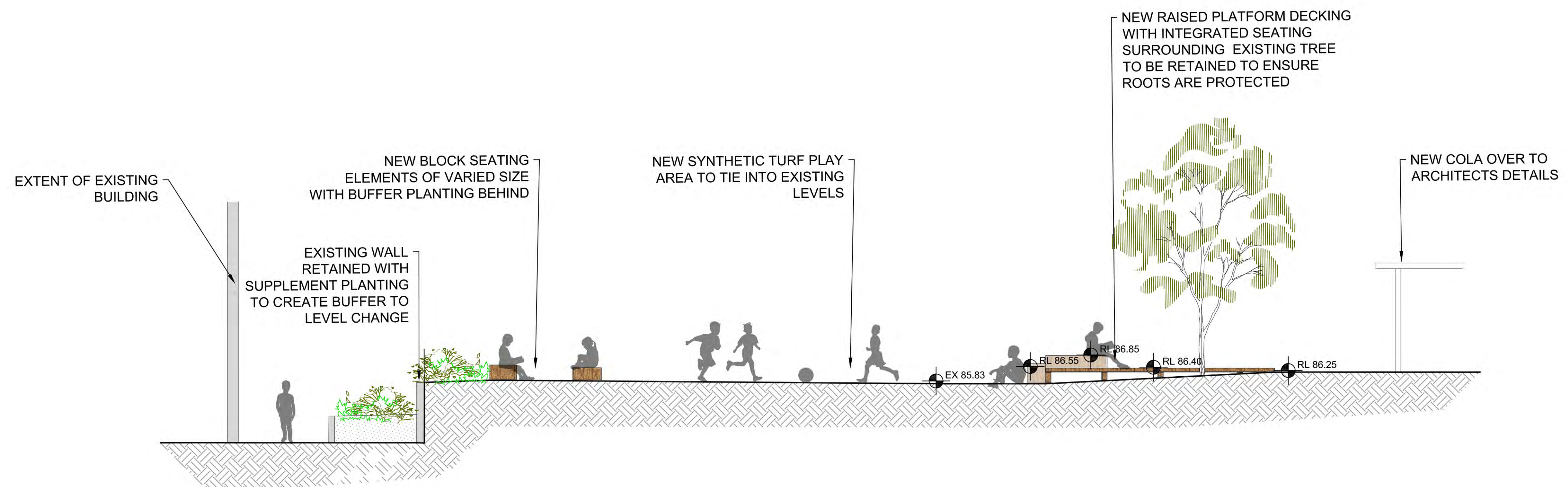
project: North Sydney Public School
 client: NSW Education
 date: 11.11.2021
 revision: D
 drawn: BH
 checked: AL



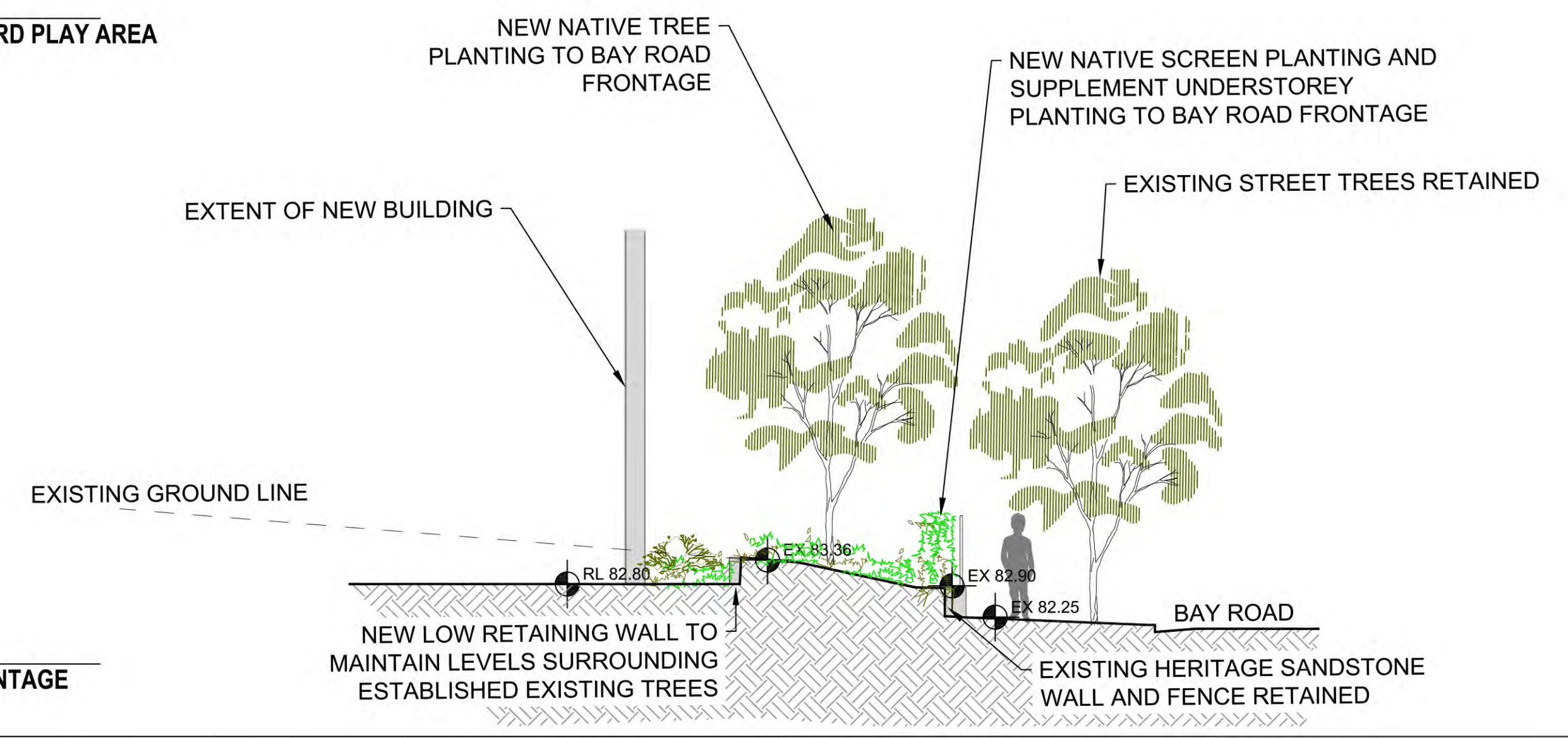
1 SECTION
TERRACED CONNECTION
 SCALE: 1:100



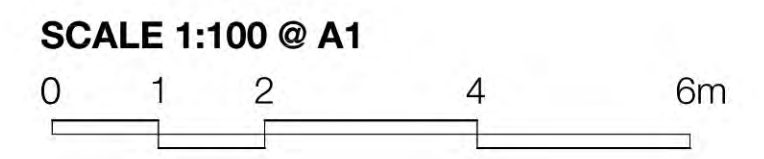
KEY PLAN



2 SECTION
MAIN COURTYARD PLAY AREA
 SCALE: 1:100



3 SECTION
BAY ROAD FRONTAGE
 SCALE: 1:100



LANDSCAPE SECTIONS

project: North Sydney Public School
 client: NSW Education
 date: 17.08.2021
 revision: B
 drawn: BH
 checked: AL

TaylorBrammer
 TAYLOR BRAMMER LANDSCAPE ARCHITECTS PTY LTD
 SYDNEY STUDIO
 218 O'Connell Street, Sydney, NSW 2000
 E: sydney@taylorbrammer.com.au
 T: 61 2 9467 8855
 Copyright of Taylor Brammer Landscape Architects Pty Ltd
 ABR 01 086 726 086

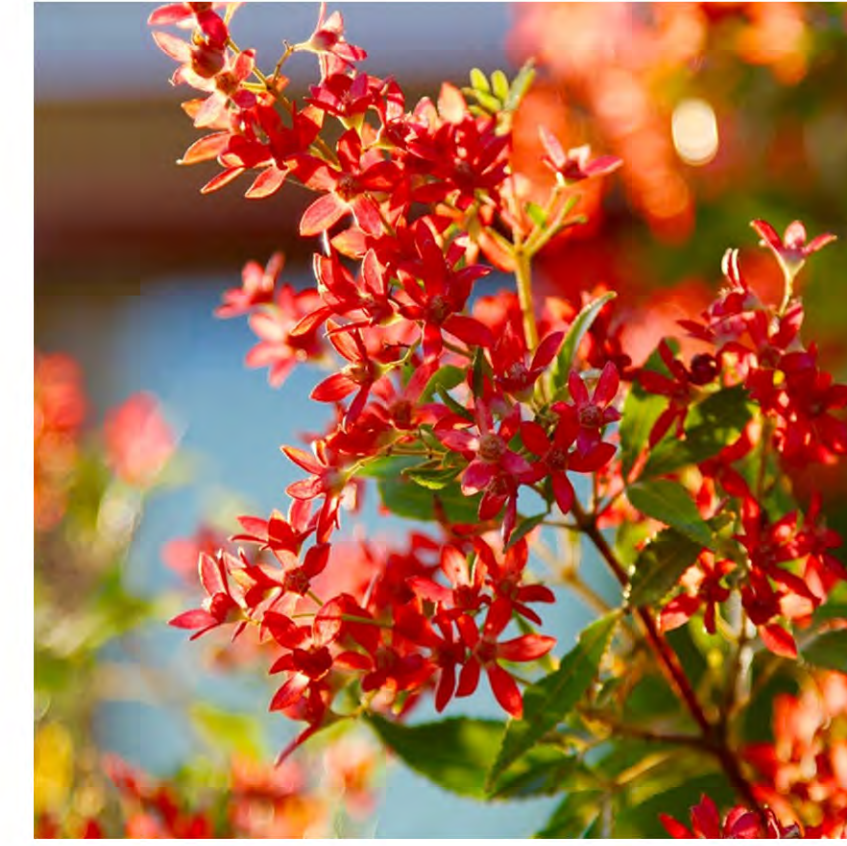
LA201

PLANTING CHARACTER

THE PROPOSED PLANTING CHARACTER FOR THE SITE AIMS TO MAINTAIN CONSISTENCY WITH THE LOCAL CHARACTER OF NORTH SYDNEY LGA.

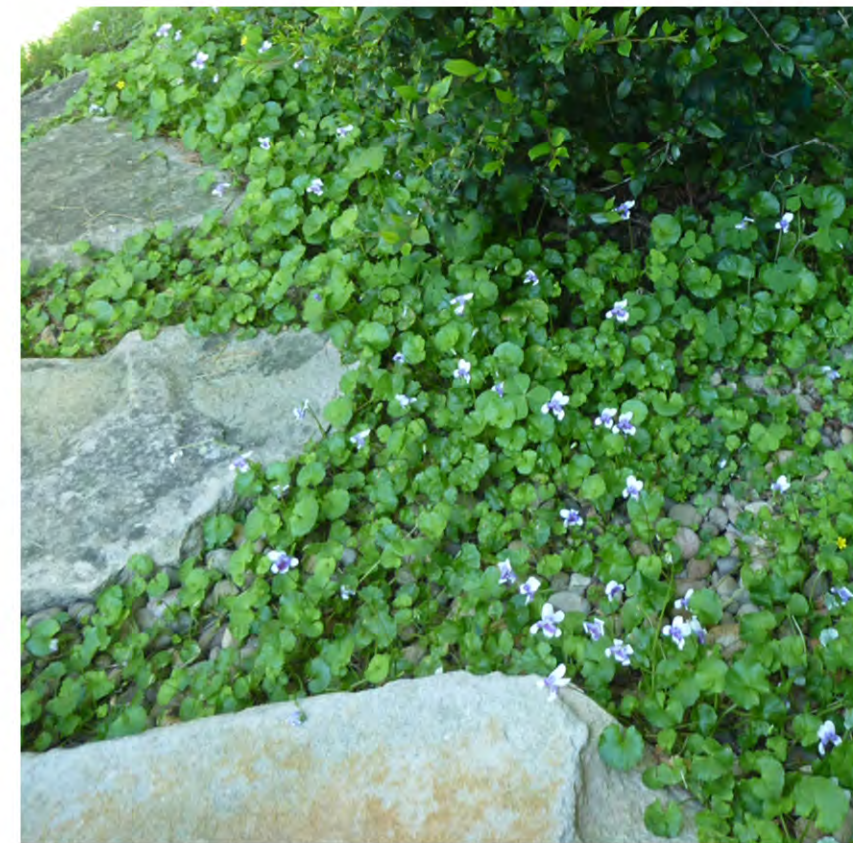
A MIX OF FLOWERING NATIVE PLANT SPECIES HAVE BEEN SELECTED TO CORRESPOND TO THE EXISTING VEGETATION ACROSS THE SITE.

PLANT SELECTIONS ARE SYMPATHETIC TO THE SITE'S ENVIRONMENTAL CONDITIONS, ENSURING THAT PLANT SPECIES OFFER HARDINESS TO ENSURE LONGEVITY.



PLANT SCHEDULE

	BOTANICAL NAME	COMMON NAME	HEIGHT (m)	SIZE	Qty
TREES					
An-hi	<i>Angophora hispida</i>	Dwarf Apple	2-4m	100L	3
Ba-in	<i>Banksia integrifolia</i>	Coastal Banksia	6	100L	2
Ba-se	<i>Banksia Serrata</i>	Old Man Banksi	8m	100L	2
Ca-se	<i>Callicoma serratifolia</i>	Black Wattle	4m	100L	3
Ce-gu	<i>Ceratopetalum gummiferum</i>	NSW Christmas Bush	3m	100L	2
Eu-pa	<i>Eucalyptus paniculata</i>	Grey Iron Bark	20m	100L	3
Eu-ra	<i>Eucalyptus racemosa</i>	Scribbly Gum	12m	100L	1
Po-fe	<i>Pomaderris ferruginea</i>	Rusty Pomaderris	4m	100L	1
Sy-sm	<i>Syzygium smithii</i>	Lilly Pilly	12m	100L	3
SHRUBS					
Ac-ul	<i>Acacia ulicifolia</i>	Prickly Moses	1m	300mm	22
Ac-ti	<i>Acmena smithii 'Red Tip'</i>	Lilly Pilly	2	300mm	29
As-ni	<i>Asplenium nidus</i>	Birds Nest Fern	1.2	45L	16
Ba-er	<i>Banksia ericifolia</i>	Heath Banksia	2m	300mm	3
Ba-ro	<i>Banksia robur</i>	Swamp Banksia	2m	300mm	8
Ca-li	<i>Callistemon linearis</i>	Narrow-leaved Bottlebrush	1.5m	300mm	18
Ca-wa	<i>Callistemon 'White ANZAC'</i>	Bottlebrush	1m	300mm	29
Cr-sa	<i>Crowea saligna</i>	Pink Crowea	1m	300mm	21
Di-an	<i>Diksonia antarctica</i>	Wolly tree fern	2	75L	24
Gr-li	<i>Grevillea linearifolia</i>	White Spider Flower	2m	300mm	22
Gr-sp	<i>Grevillea speciosa</i>	Red Spider Flower	2m	300mm	25
Ku-am	<i>Kunzea ambigua</i>	Tick Bush	1m	300mm	19
Pu-da	<i>Pultenaea daphnoides</i>	Large-leaf Bush-pea	2m	300mm	14
Sy-Ca	<i>Syzygium Cascade</i>	Lilly Pilly	2m	300mm	167
We-fr	<i>Westringia fruticosa</i>	Coastal Rosemary	1.5m	300mm	5
GROUNDCOVERS					
Ac-co	<i>Acacia cognata</i>	Dwarf acacia	0.5	150mm	49
Ba-bc	<i>Banksia 'Birthday Candles'</i>	Prostrate Banksia	0.5	150mm	55
Bl-nu	<i>Blechnum nudum</i>	Blechnum	0.75	150mm	20
Di-ca	<i>Dianella caerulea</i>	Blue Flax Lily	0.75	150mm	50
Di-re	<i>Dianella revoluta</i>	Flax Lily	0.75	150mm	60
Gr-ob	<i>Grevillea obtusifolia</i>	Prostrate Grevillea	0.3	150mm	46
Ha-vi	<i>Hardenbergia violacea</i>	False Sasparilla	0.3	150mm	49
Lo-hy	<i>Lomandra hystrix</i>	Matt Rush	0.5	150mm	115
Lo-lo	<i>Lomandra longifolia</i>	Fine-leaved Matt Rush	0.5	150mm	155
My-pa	<i>Myoporum parvifolium 'Yareena'</i>	Creeping Boobialla	0.15	150mm	55
Pe-al	<i>Pennisetum alopecuroides 'Nafray'</i>	Swamp Foxtail	1	150mm	90
Sc-au	<i>Scaevola 'Aussie Salute'</i>	Fan Flower	0.3	150mm	10
Vi-he	<i>Viola hederacea</i>	Native Violet	0.3	150mm	45
We-mu	<i>Westringia 'Mundi'</i>	Prostrate Coast Rosemary	0.5	150mm	66

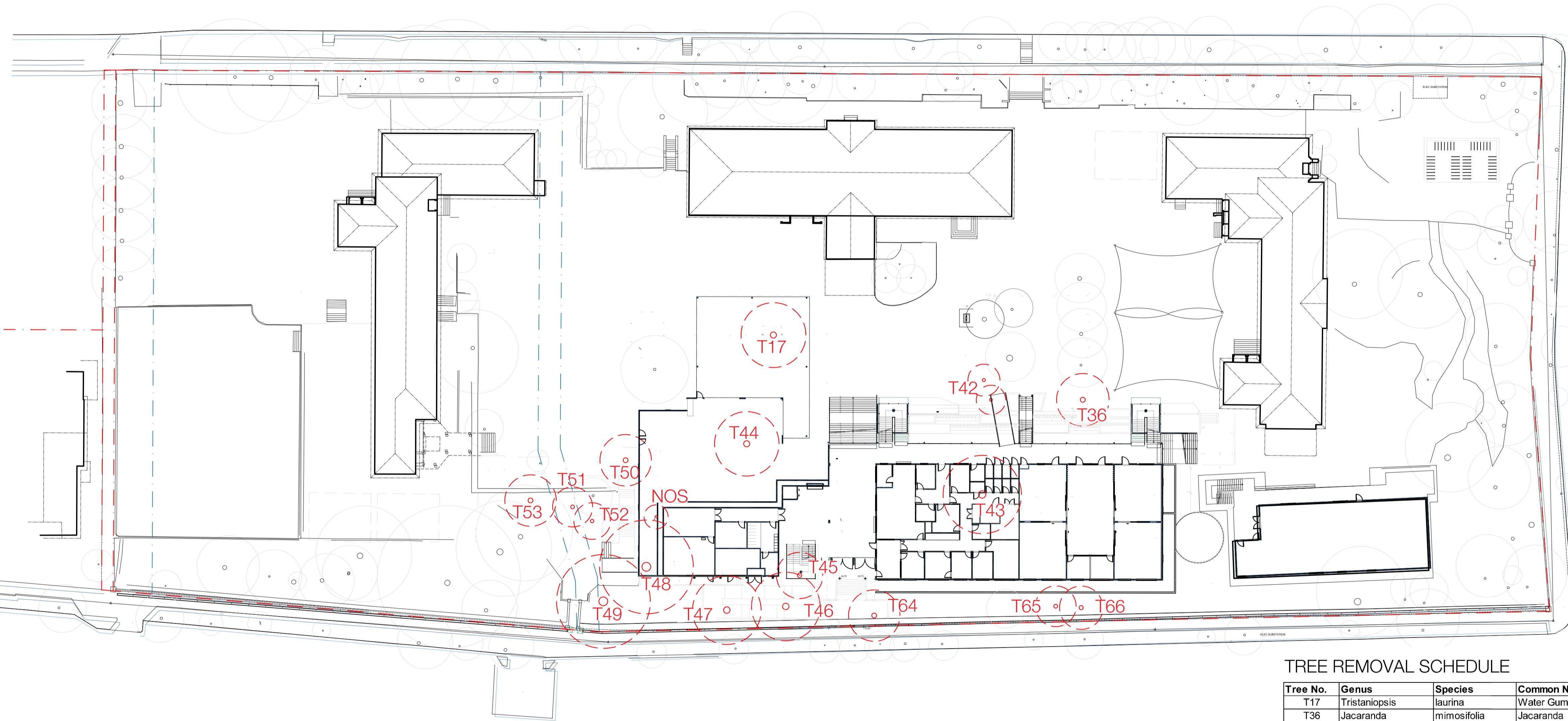


PLANT SCHEDULE AND CHARACTER

project: North Sydney Public School
 client: NSW Education
 date: 17.08.2021
 revision: B
 drawn: BH
 checked: AL

TaylorBrammer
 TAYLOR BRAMMER LANDSCAPE ARCHITECTS PTY LTD
 SYDNEY (AUSTRALIA)
 216 David Street, Mosman, NSW 1585 E: sydney@taylorbrammer.com.au
 Copyright © Taylor Brammer Landscape Architects Pty Ltd

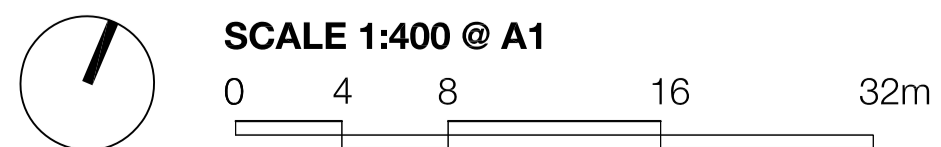
LA301



TREE REMOVAL SCHEDULE

Tree No.	Genus	Species	Common Name	Height	Spread	Significance	Removed
T17	Tristaniopsis	laurina	Water Gum	12	13	Medium	Y
T36	Jacaranda	mimosifolia	Jacaranda	9	10	Low - Medium	Y
T42	Lophostemon	confertus	Brush Box	10	3	Low	Y
T43	Eucalyptus	paniculata	Grey Ironbark	21	13	Medium - High	Y
T44	Eucalyptus	punctata	Grey Gum	15	7	Low - Medium	Y
T45	Liquidambar	styraciflua	Sweet Gum	12	6	Low - Medium	Y
T46	Eucalyptus	nicholii	Narrow-leaved Black Peppermint	11	8	Low	Y
T47	Eucalyptus	camaldulensis	River Red Gum	16	9	Medium	Y
T48	Melia	azedarach	White Cedar	10	13	Low - Medium	Y
T49	Pinus	radiata	Radiata Pine	18	11	Low	Y
T50	Syzygium	oleosum	Blue Cherry	11	5	Medium	Y
T51	Celtis	australis	European Nettle Tree	10	5	Low	Y
T52	Casuarina	cunninghamiana	River Sheoak	12	4	Low	Y
T53	Celtis	australis	Hackberry	10	8	Low	Y
T64	Erythrina	x sykesii	Indian Coral Tree	8	8	Low	Y
T65	Lagerstroemia	indica	Crepe Myrtle	6	6	Low	Y
T66	Schefflera	actinophylla	Umbrella Tree	7	7	Low	Y

*NOS refers to trees for removal which are not included in the arborist report.
 Tree information as per arborist report prepared by Arboreport Vegetation Management consultants prepared August 2021.



SCALE 1:400 @ A1

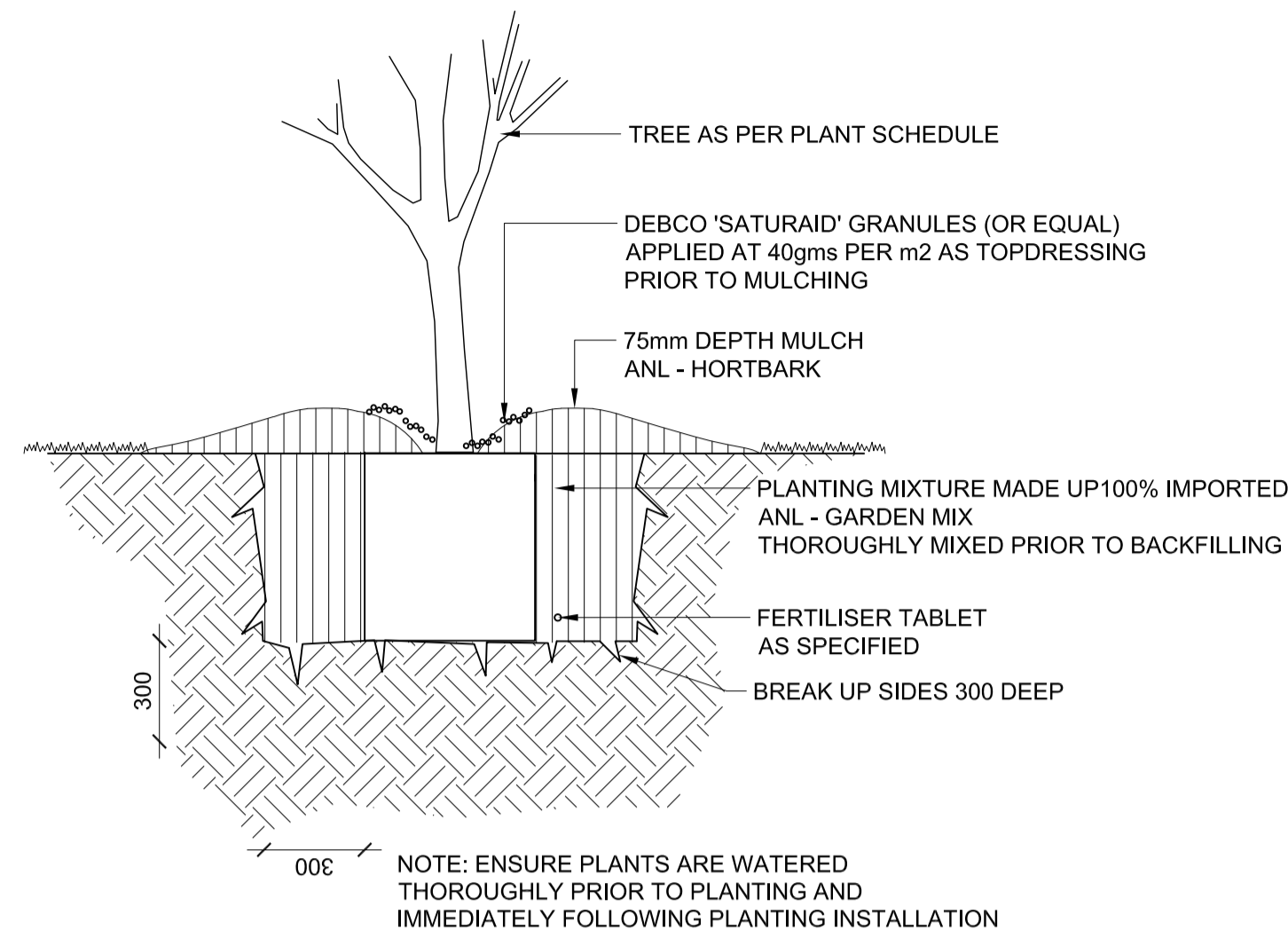
TREE RETENTION AND REMOVAL PLAN

LEGEND

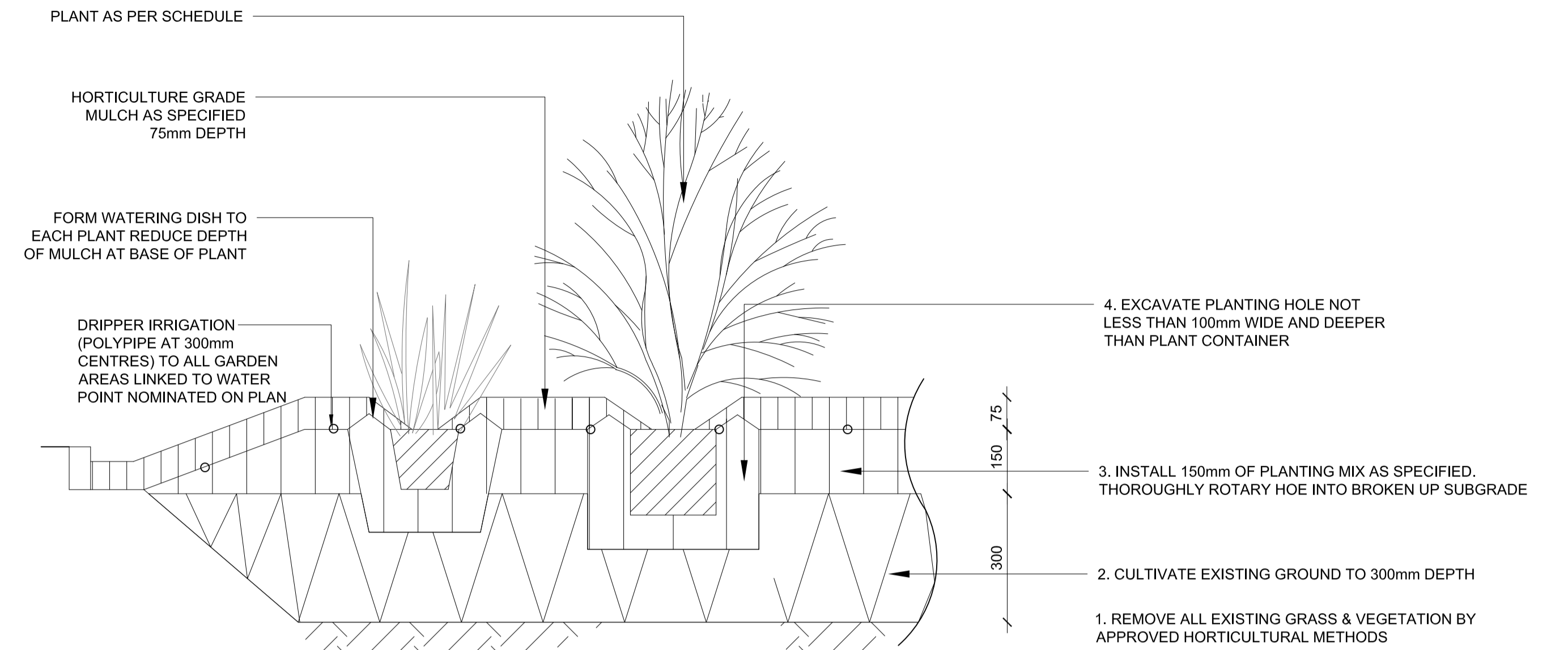
- SITE BOUNDARY
- EXISTING TREE RETAINED
- EXISTING TREE REMOVED

project: North Sydney Public School
 client: NSW Education
 date: 11.11.2021
 revision: D
 drawn: BH
 checked: AL

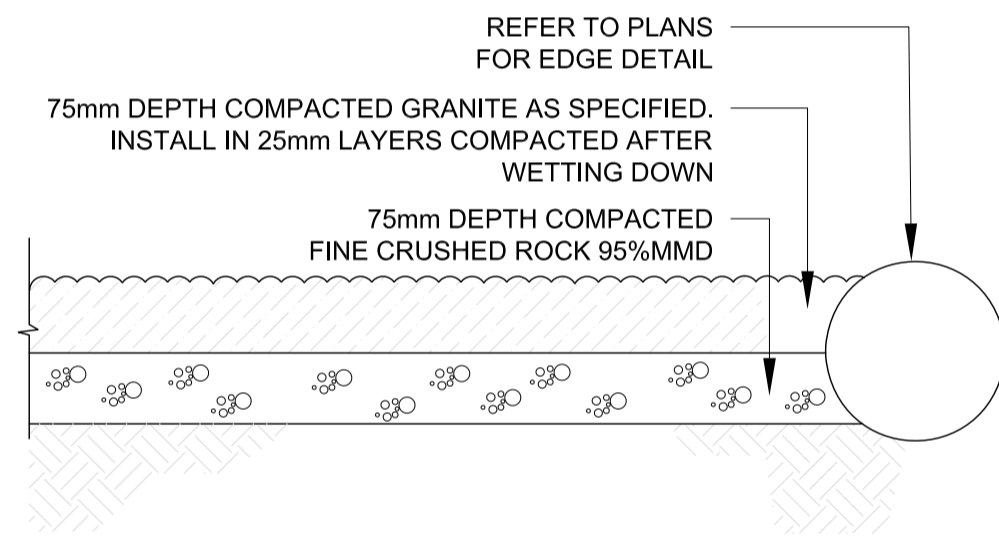
TaylorBrammer LA401
 TAYLOR BRAMMER LANDSCAPE ARCHITECTS PTY LTD
 218 Oxford Street, North Sydney, NSW 1585
 Copyright © Taylor Brammer Landscape Architects Pty Ltd.



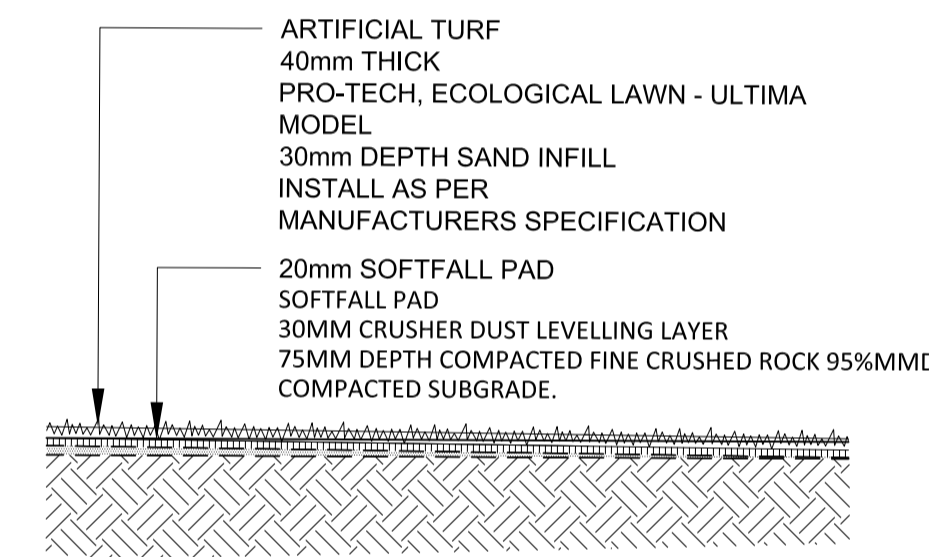
1 TREE PLANTING
TYPICAL SECTION 1:20



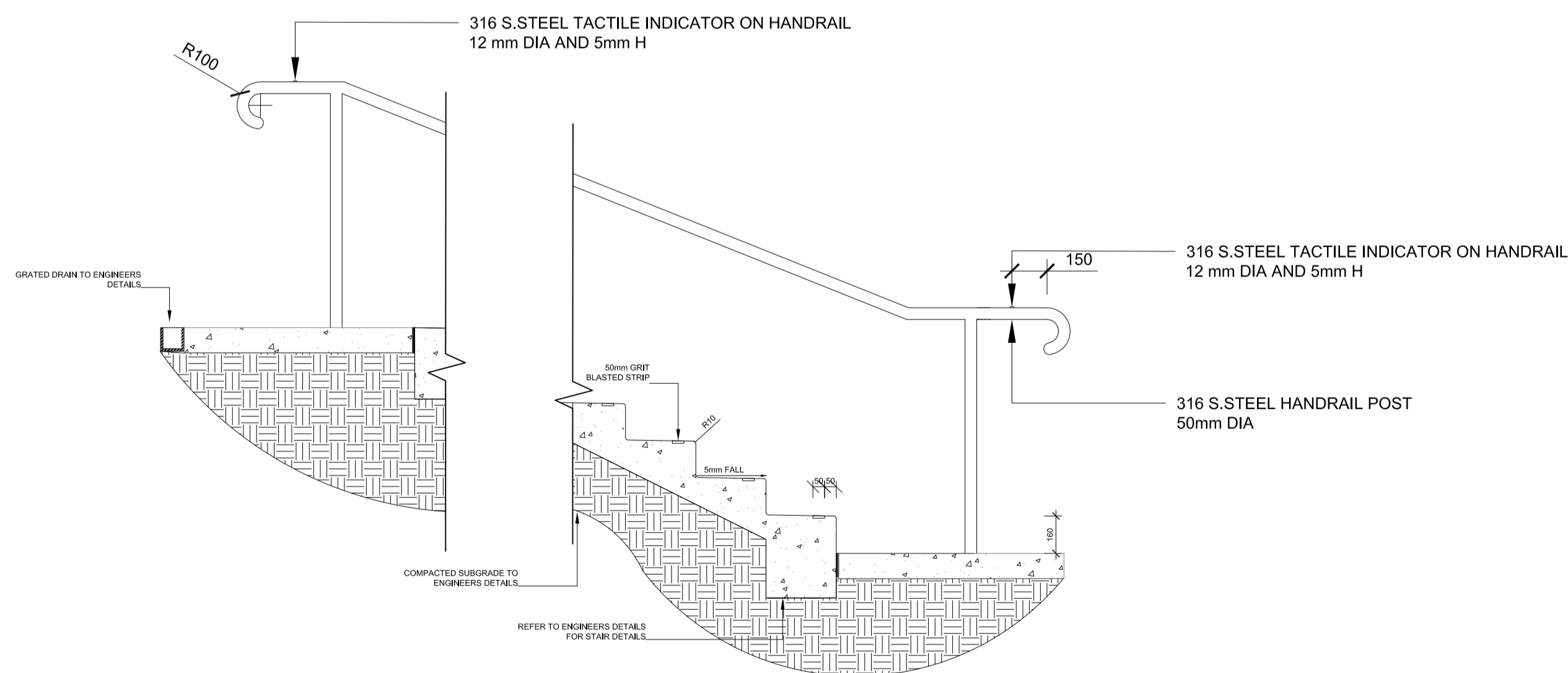
2 MASS PLANTING BED-NATURAL GROUND
TYPICAL SECTION 1:10



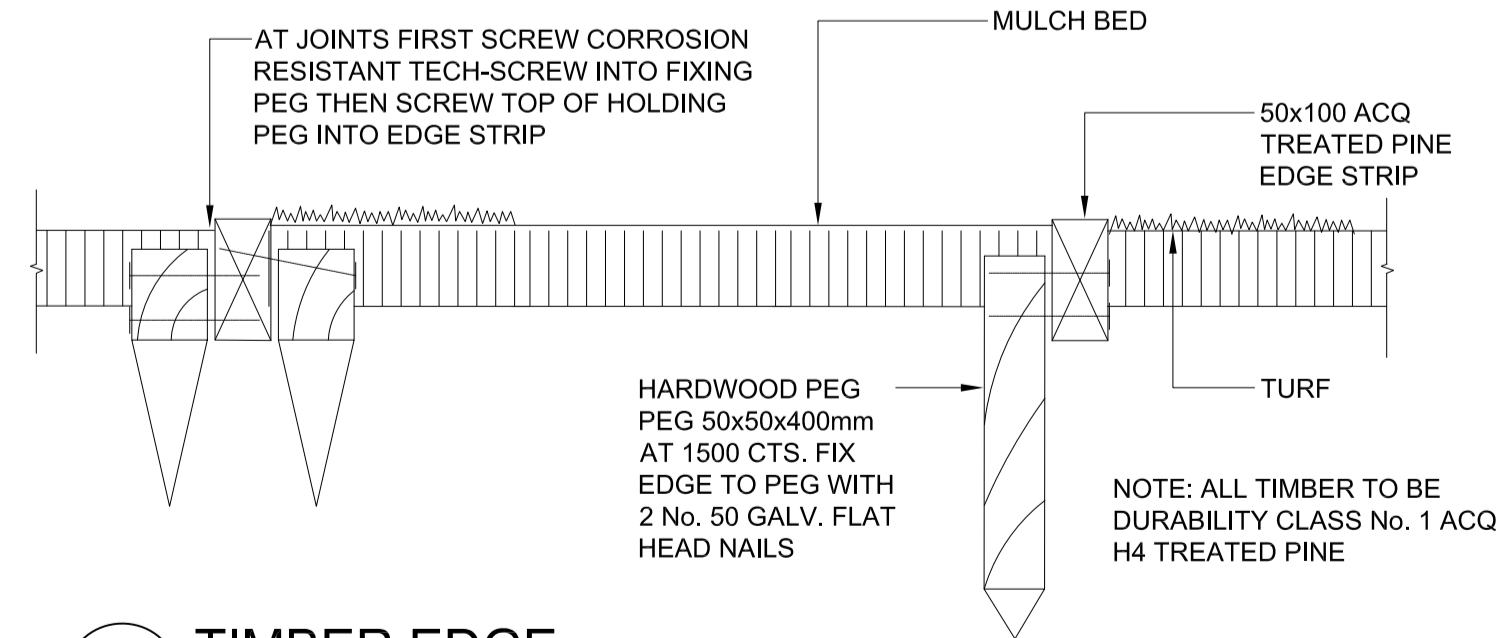
3 PAVING-DECOMPOSED GRAVEL ON GRADE
TYPICAL SECTION 1:20



4 ARTIFICIAL TURF
TYPICAL SECTION 1:20



5 CONCRETE STAIR
TYPICAL DETAIL SCALE 1:20



6 TIMBER EDGE
SECTION 1:10

LANDSCAPE DETAILS

project: North Sydney Public School
client: NSW Education
date: 17.08.2021
revision: B
drawn: BH
checked: AL

TaylorBrammer
TAYLOR BRAMMER LANDSCAPE ARCHITECTS PTY LTD
218 Oxford Street, Sydney NSW 2000
Copyright of Taylor Brammer Landscape Architects Pty Ltd.

LA501