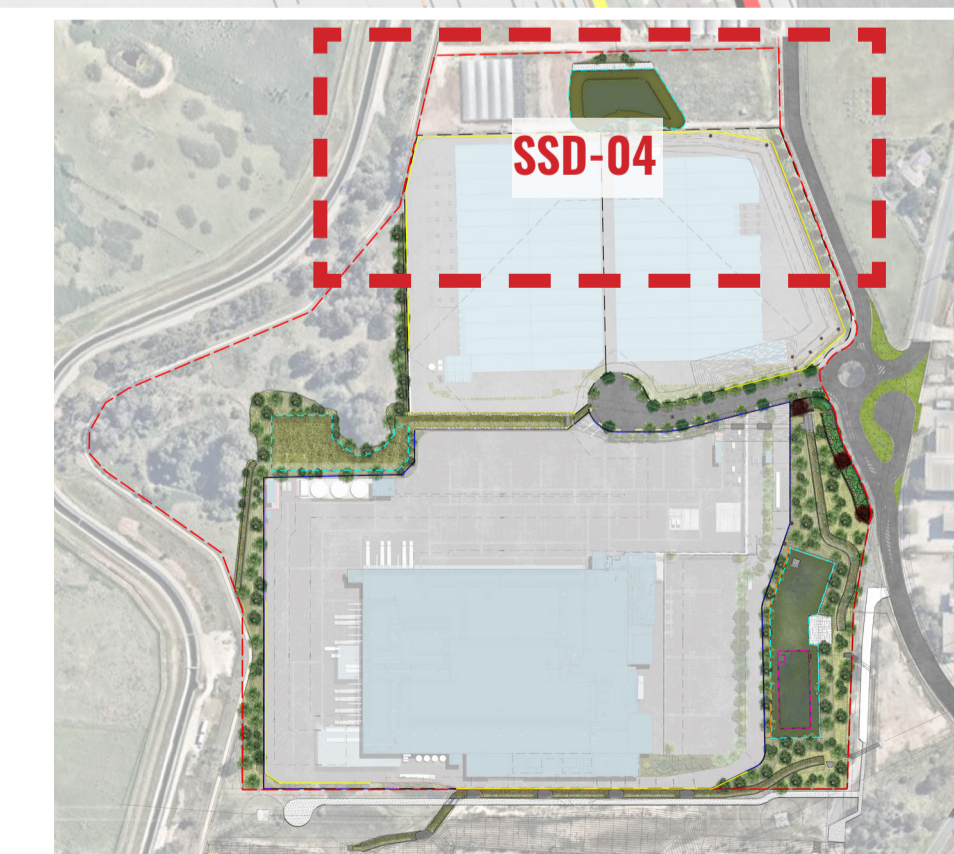


LEGEND

- SITE BOUNDARY
- LOT BOUNDARY
- EXTENT OF DETENTION BASIN
- EXTENT OF BIOFILTRATION BASIN
- MAX. Q100 LEVEL TO ENGINEER'S DETAIL
- EXISTING TREES TO BE RETAINED
- EXISTING TREES TO BE REMOVED
- HAND PLANTED CANOPY & STREET TREE PLANTING
- HAND PLANTED FEATURE SHRUB PLANTING
- TURF
- GRASSES & GROUNDCOVERS.
- HYDROMULCH MIX 1 (HM1), REFER TO DETAIL PLANS SSD-04 TO SSD-08.
- HYDROMULCH MIX 2 (HM2), REFER TO DETAIL PLANS SSD-04 TO SSD-08.
- HYDROMULCH MIX 3 (HM3), REFER TO DETAIL PLANS SSD-04 TO SSD-08.
- PROPOSED CONTOURS TO ENGINEER'S DETAIL
- FOOTPATH & GRASSED VERGE TO ACCESS ROAD
- RIP-RAP SCOUR PROTECTION TO ENGINEER'S DETAILS
- DROP SILL STRUCTURE TO ENGINEER'S DETAILS
- RETAINING WALL TO CIVIL ENGINEER'S DETAILS
- STORMWATER PITS TO ENGINEER'S DETAILS
- HAND PLANTED BIOFILTRATION BASIN PLANTING MIX
- MAINTENANCE ACCESS TRACK TO ENGINEER'S DETAIL
- FENCING FOR LOT 1 TO ARCHITECT'S DETAIL.
- STORMWATER EASEMENT
- +RL 60.20
- PROPOSED LEVELS



Drawing Title:
Landscape Detail Plan - Sheet 1
 DWG No:

SSD-04

GEOSCAPES
 LANDSCAPE ARCHITECTS
 Suite 215, 284 Victoria Ave, Chatswood NSW 2067 Ph. (02) 9411 1485
 www.geoscapes.com.au
 ABN 84 620 205 781 ACN 620 205 781

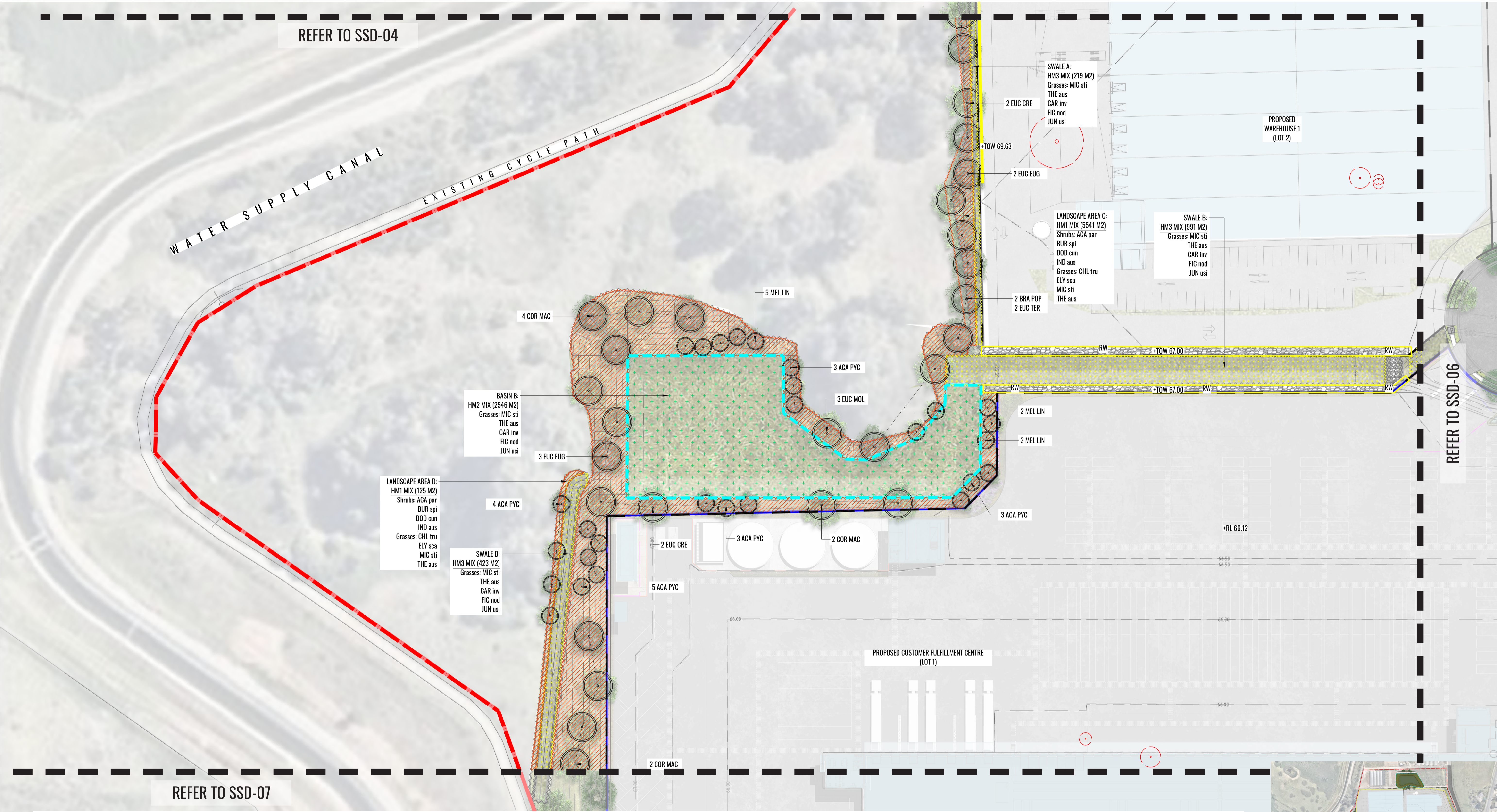
Architect:
LEFFLER SIMES ARCHITECTS

Client:
Charter Hall

Scale:
 1:500 @ A1
 1:1000 @ A3
 Date:
 24.06.20
 Job Number:
 191128
 North:

 Project:
Horsley Business Park - Stage 2
 Wetherill Park, NSW 2164

Revision			FOR SSD MODIFICATION	
Rev	Date	Description	Drawn	Checked
I	17.06.20	Updated for SSD-Modification	SB	BG
J	24.06.20	Updated for SSD-Modification	SB	BG



LEGEND

SITE BOUNDARY	LOT BOUNDARY	EXTENT OF DETENTION BASIN	EXTENT OF BIOFILTRATION BASIN	MAX. Q100 LEVEL TO ENGINEER'S DETAIL	EXISTING TREES TO BE RETAINED	EXISTING TREES TO BE REMOVED
HAND PLANTED CANOPY & STREET TREE PLANTING	HAND PLANTED FEATURE SHRUB PLANTING	GRASSES & GROUNDCOVERS.	HYDROMULCH MIX 1 (HM1). REFER TO DETAIL PLANS SSD-04 TO SSD-08.	HYDROMULCH MIX 2 (HM2). REFER TO DETAIL PLANS SSD-04 TO SSD-08.	HYDROMULCH MIX 3 (HM3). REFER TO DETAIL PLANS SSD-04 TO SSD-08.	HAND PLANTED BIOFILTRATION BASIN PLANTING MIX
TURF	FOOTPATH & GRASSED VERGE TO ACCESS ROAD	RIP-RAP SCOUR PROTECTION TO ENGINEER'S DETAILS	DROP SILL STRUCTURE TO ENGINEER'S DETAILS	RETAINING WALL TO CIVIL ENGINEER'S DETAILS	STORMWATER PITS TO ENGINEER'S DETAILS	STORMWATER EASEMENT
PROPOSED CONTOURS TO ENGINEER'S DETAIL	MAINTENANCE ACCESS TRACK TO ENGINEER'S DETAIL	+RL 60.20 PROPOSED LEVELS	FENCING FOR LOT 1 TO ARCHITECT'S DETAIL.			



Drawing Title:
Landscape Detail Plan - Sheet 2
 DWG No:
SSD-05

GEOSCAPES
 LANDSCAPE ARCHITECTS
 Suite 215, 284 Victoria Ave, Chatswood NSW 2067 Ph. (02) 9411 1485
 www.geoscapes.com.au
 ABN 84 620 205 781 ACN 620 205 781

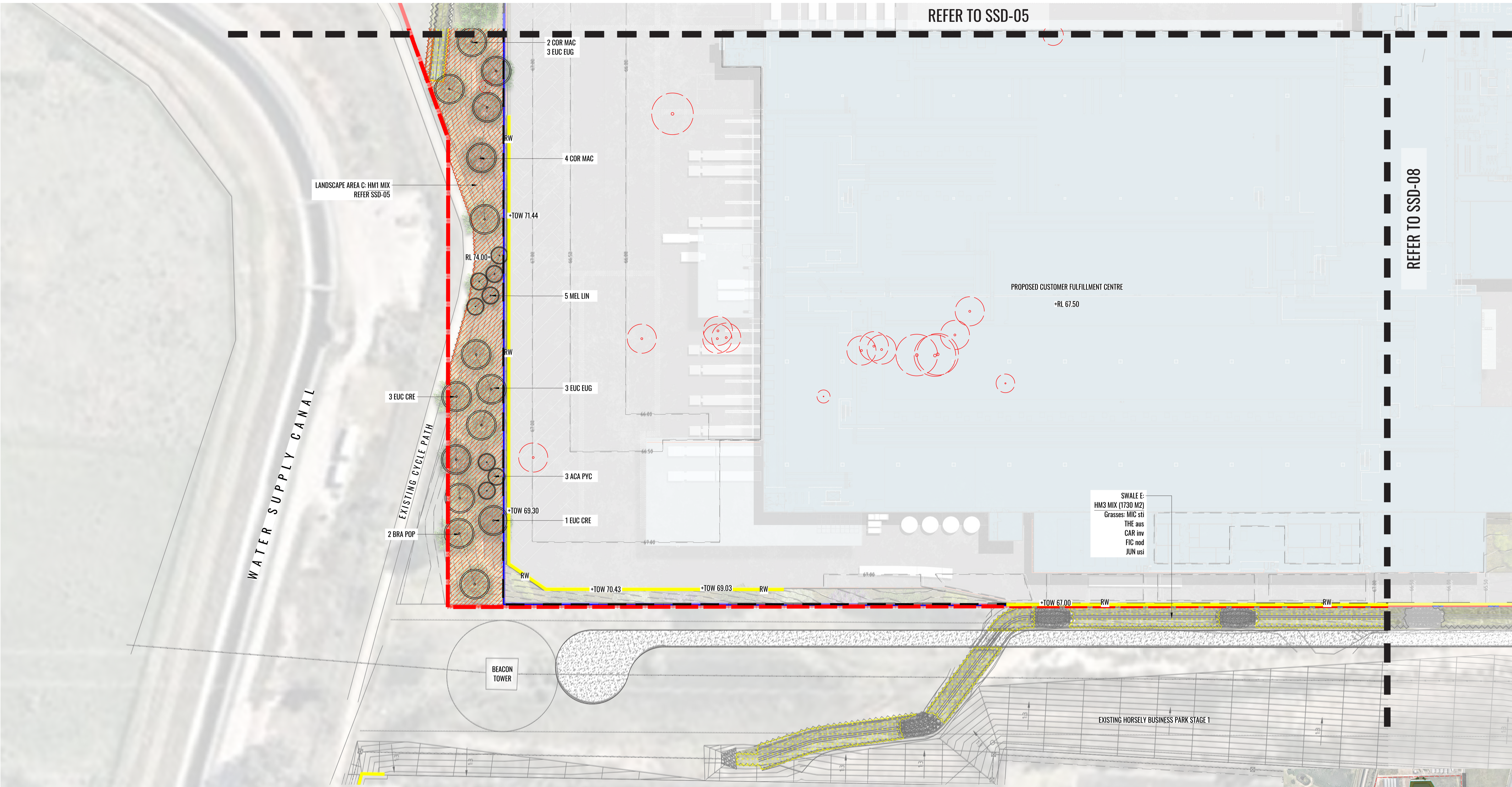
Architect:
LEFFLER SIMES ARCHITECTS

Client:
Charter Hall

Scale:
 1:500 @ A1
 1:1000 @ A3
 Date:
 24.06.20
 Job Number:
 191128
 North:

 Project:
Horsley Business Park - Stage 2
 Wetherill Park, NSW 2164

Revision			FOR SSD MODIFICATION	
Rev	Date	Description	Drawn	Checked
I	17.06.20	Updated for SSD-Modification	SB	BG
J	24.06.20	Updated for SSD-Modification	SB	BG



LEGEND

- SITE BOUNDARY
- LOT BOUNDARY
- EXTENT OF DETENTION BASIN
- EXTENT OF BIOFILTRATION BASIN
- MAX. Q100 LEVEL TO ENGINEER'S DETAIL
- EXISTING TREES TO BE RETAINED
- EXISTING TREES TO BE REMOVED
- HAND PLANTED CANOPY & STREET TREE PLANTING
- HAND PLANTED FEATURE SHRUB PLANTING
- GRASSES & GROUNDCOVERS.
- HYDROMULCH MIX 1 (HM1), REFER TO DETAIL PLANS SSD-04 TO SSD-08.
- HYDROMULCH MIX 2 (HM2), REFER TO DETAIL PLANS SSD-04 TO SSD-08.
- HYDROMULCH MIX 3 (HM3), REFER TO DETAIL PLANS SSD-04 TO SSD-08.
- HAND PLANTED BIOFILTRATION BASIN PLANTING MIX
- TURF
- FOOTPATH & GRASSED VERGE TO ACCESS ROAD
- RIP-RAP SCOUR PROTECTION TO ENGINEER'S DETAILS
- DROP SILL STRUCTURE TO ENGINEER'S DETAILS
- RETAINING WALL TO CIVIL ENGINEER'S DETAILS
- STORMWATER PITS TO ENGINEER'S DETAILS
- PROPOSED CONTOURS TO ENGINEER'S DETAIL
- MAINTENANCE ACCESS TRACK TO ENGINEER'S DETAIL
- +RL 60.20
- FENCING FOR LOT 1 TO ARCHITECT'S DETAIL.
- STORMWATER EASEMENT



Drawing Title:
Landscape Detail Plan - Sheet 4
DWG No:
SSD-07

GEOSCAPES
LANDSCAPE ARCHITECTS
Suite 215, 284 Victoria Ave, Chatswood NSW 2067 Ph. (02) 9411 1485
www.geoscapes.com.au
ABN 84 620 205 781 ACN 620 205 781

Architect:
LEFFLER SIMES ARCHITECTS

Client:
Charter Hall

Scale:
1:500 @ A1
1:1000 @ A3

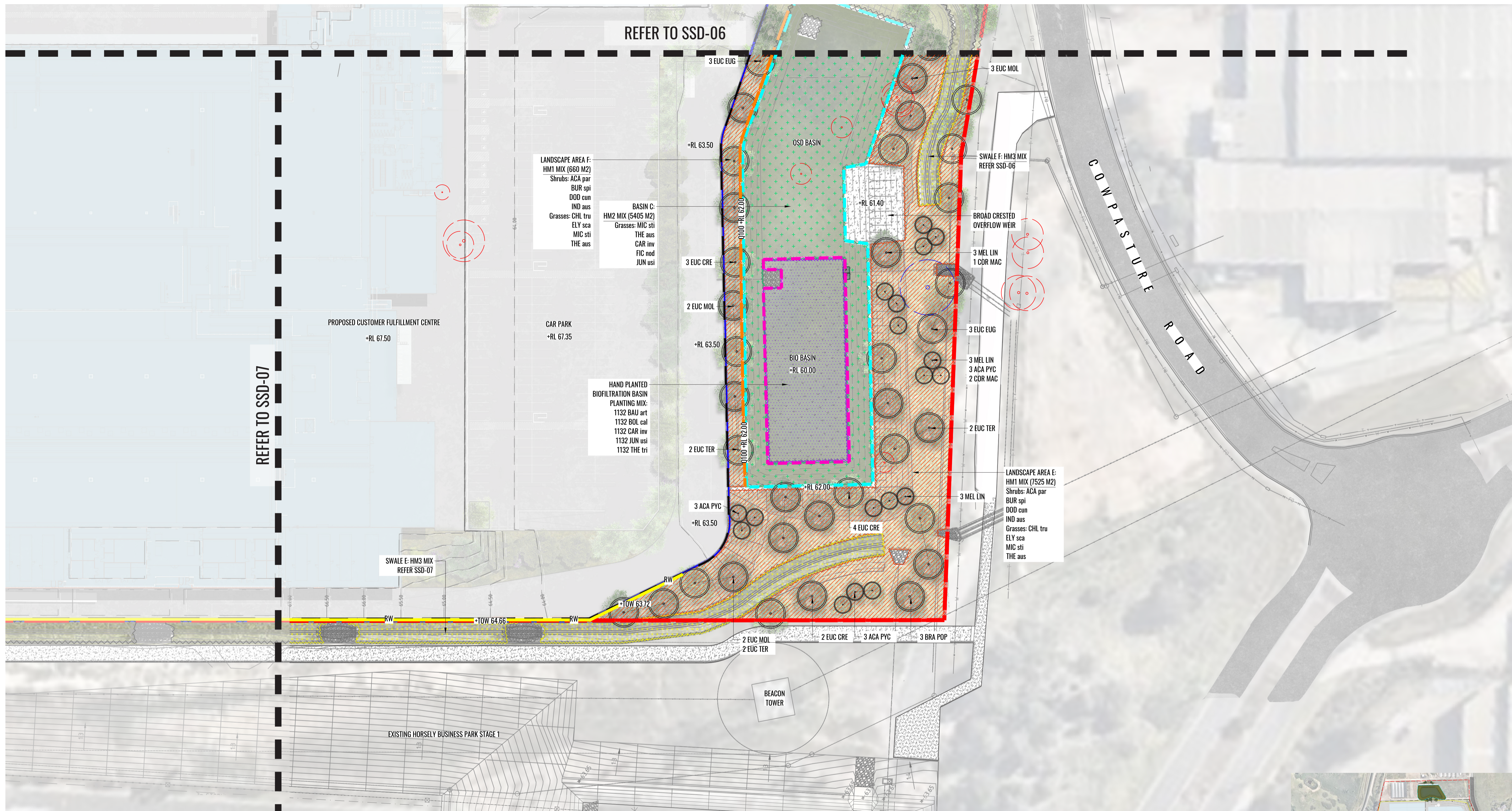
Date:
24.06.20

Job Number:
191128

North:

Project:
Horsley Business Park - Stage 2
Wetherill Park, NSW 2164

Revision			FOR SSD MODIFICATION	
Rev	Date	Description	Drawn	Checked
I	17.06.20	Updated for SSD-Modification	SB	BG
J	24.06.20	Updated for SSD-Modification	SB	BG



LEGEND

SITE BOUNDARY	LOT BOUNDARY	EXTENT OF DETENTION BASIN	EXTENT OF BIOFILTRATION BASIN	MAX. Q100 LEVEL TO ENGINEER'S DETAIL	EXISTING TREES TO BE RETAINED	EXISTING TREES TO BE REMOVED
HAND PLANTED CANOPY & STREET TREE PLANTING	HAND PLANTED FEATURE SHRUB PLANTING	GRASSES & GROUNDCOVERS.	HYDROMULCH MIX 1 (HM1), REFER TO DETAIL PLANS SSD-04 TO SSD-08.	HYDROMULCH MIX 2 (HM2), REFER TO DETAIL PLANS SSD-04 TO SSD-08.	HYDROMULCH MIX 3 (HM3), REFER TO DETAIL PLANS SSD-04 TO SSD-08.	HAND PLANTED BIOFILTRATION BASIN PLANTING MIX
TURF	FOOTPATH & GRASSED VERGE TO ACCESS ROAD	RIP-RAP SCOUR PROTECTION TO ENGINEER'S DETAILS	DROP SILL STRUCTURE TO ENGINEER'S DETAILS	RETAINING WALL TO CIVIL ENGINEER'S DETAILS	STORMWATER PITS TO ENGINEER'S DETAILS	STORMWATER EASEMENT
PROPOSED CONTOURS TO ENGINEER'S DETAIL	MAINTENANCE ACCESS TRACK TO ENGINEER'S DETAIL	+RL 60.20 PROPOSED LEVELS	FENCING FOR LOT 1 TO ARCHITECT'S DETAIL.			



Drawing Title:
Landscape Detail Plan - Sheet 5
 DWG No:
SSD-08

GEOSCAPES
 LANDSCAPE ARCHITECTS
 Suite 215, 284 Victoria Ave, Chatswood NSW 2067 Ph. (02) 9411 1485
 www.geoscapes.com.au
 ABN 84 620 205 781 ACN 620 205 781

Architect:
LEFFLER SIMES ARCHITECTS

Client:
Charter Hall

Scale:
 1:500 @ A1
 1:1000 @ A3
 Date:
 24.06.20
 Job Number:
 191128
 North:

 Project:
Horsley Business Park - Stage 2
 Wetherill Park, NSW 2164

Revision			FOR SSD MODIFICATION	
Rev	Date	Description	Drawn	Checked
I	17.06.20	Updated for SSD-Modification	SB	BG
J	24.06.20	Updated for SSD-Modification	SB	BG