

PROPOSED DISTRIBUTION CENTRE HORSELEY DRIVE BUSINESS PARK WETHERILL PARK NSW

DRAWING LIST:

DRAWING NO.	DRAWING TITLE
CO114.92.18-DA.10	DRAWING LIST & GENERAL NOTES
CO114.92.18-DA.20	EROSION & SEDIMENT CONTROL PLAN
CO114.92.18-DA.25	EROSION & SEDIMENT CONTROL DETAILS
CO114.92.18-DA.40	DRAWING KEY PLAN
CO114.92.18-DA.41	CONCEPT STORMWATER PLAN - SHEET 1
CO114.92.18-DA.42	CONCEPT STORMWATER PLAN - SHEET 2
CO114.92.18-DA.43	CONCEPT STORMWATER PLAN - SHEET 3
CO114.92.18-DA.44	CONCEPT STORMWATER PLAN - SHEET 3
CO114.92.18-DA.45	CONCEPT STORMWATER DETAILS
CO114.92.18-DA.51	FINISHED LEVELS PLAN - SHEET 1
CO114.92.18-DA.52	FINISHED LEVELS PLAN - SHEET 2
CO114.92.18-DA.53	FINISHED LEVELS PLAN - SHEET 3
CO114.92.18-DA.54	FINISHED LEVELS PLAN - SHEET 4

GENERAL NOTES:

- G1 THESE DRAWINGS SHALL BE READ IN CONJUNCTION WITH ALL ARCHITECTURAL AND OTHER CONSULTANT'S DRAWINGS AND SPECIFICATIONS AND WITH SUCH OTHER WRITTEN INSTRUCTIONS AS MAY BE ISSUED DURING THE COURSE OF THE CONTRACT. ANY DISCREPANCY SHALL BE REFERRED TO THE ENGINEER BEFORE PROCEEDING WITH THE WORK.
- G2 ALL MATERIALS AND WORKMANSHIP SHALL BE IN ACCORDANCE WITH THE RELEVANT AND CURRENT STANDARDS AUSTRALIA CODES AND WITH THE BY-LAWS AND ORDINANCES OF THE RELEVANT BUILDING AUTHORITIES EXCEPT WHERE VARYED BY THE PROJECT SPECIFICATION.
- G3 ALL DIMENSIONS SHOWN SHALL BE VERIFIED BY THE BUILDER ON SITE. ENGINEER'S DRAWINGS SHALL NOT BE SCALED FOR DIMENSIONS. ENGINEER'S DRAWINGS ISSUED IN ANY ELECTRONIC FORMAT MUST NOT BE USED FOR DIMENSIONAL SETOUT. REFERENCE TO ARCHITECT'S DRAWINGS FOR ALL DIMENSIONAL SETOUT IS MANDATORY.
- G4 DURING CONSTRUCTION THE STRUCTURE SHALL BE MAINTAINED IN A STABLE CONDITION AND NO PART SHALL BE OVERSTRESSED. TEMPORARY BRACING SHALL BE PROVIDED BY THE BUILDER TO KEEP THE WORKS AND EXCAVATIONS STABLE AT ALL TIMES.
- G5 UNLESS NOTED OTHERWISE ALL LEVELS ARE IN METRES AND ALL DIMENSIONS ARE IN MILLIMETRES.
- G6 ALL WORKS SHALL BE UNDERTAKEN IN ACCORDANCE WITH APPLICABLE SAFETY STANDARDS & APPROVED SAFETY SIGNS SHALL BE DISPLAYED AT ALL TIMES DURING THE PROGRESS OF THE JOB.

ELECTRONIC INFORMATION NOTES:

1. THE ISSUED DRAWINGS IN HARD COPY OR PDF FORMAT TAKE PRECEDENCE OVER ANY ELECTRONICALLY ISSUED INFORMATION, LAYOUTS OR DESIGN MODELS.
2. THE CONTRACTOR'S DIRECT AMENDMENT OR MANIPULATION OF THE DATA OR INFORMATION THAT MIGHT BE OBTAINED WITHIN AN ENGINEER-SUPPLIED DIGITAL TERRAIN MODEL AND ITS SUBSEQUENT USE TO UNDERTAKE THE WORKS WILL BE SOLELY AT THE DISCRETION OF AND THE RISK OF THE CONTRACTOR.
3. THE CONTRACTOR IS REQUIRED TO HIGHLIGHT ANY DISCREPANCIES BETWEEN THE DIGITAL TERRAIN MODEL AND INFORMATION PROVIDED IN THE CONTRACT AND/OR DRAWINGS AND IS REQUIRED TO SEEK CLARIFICATION FROM THE SUPERINTENDENT.
4. THE ENGINEER WILL NOT BE LIABLE OR RESPONSIBLE FOR THE POSSIBLE ON-GOING NEED TO UPDATE THE DIGITAL TERRAIN MODEL, SHOULD THERE BE ANY AMENDMENTS OR CHANGES TO THE DRAWINGS OR CONTRACT INITIATED BY THE CONTRACTOR.

SAFETY NOTE:

EXISTING SITE LEVELS AND DETAILS BASED ON A PLAN OF SURVEY 1601364.02 BY MONTEATH & POWYS SURVEYORS 12/10/16 COORDINATES BASED ON MGA COORDINATES AS NOMINATED ON SURVEY DRAWING.

SAFETY NOTE:

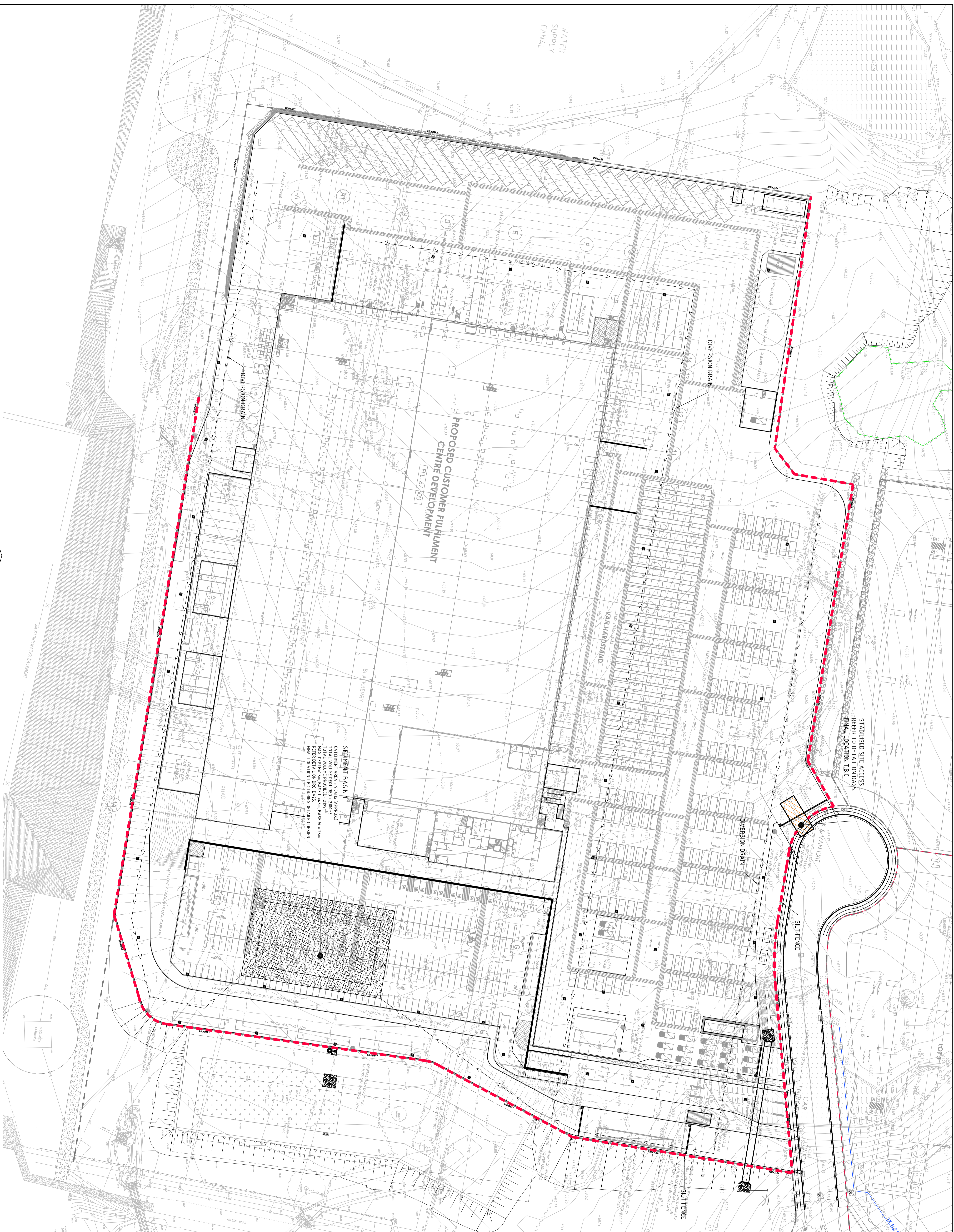
EXISTING SITE LEVELS AND DETAILS BASED ON A PLAN OF SURVEY 1601364.02 BY MONTEATH & POWYS SURVEYORS 12/10/16 COORDINATES BASED ON MGA COORDINATES AS NOMINATED ON SURVEY DRAWING.



LOCALITY PLAN
NOT TO SCALE

FOR DEVELOPMENT APPLICATION

FOR DEVELOPMENT APPLICATION		23/11/20		A		ISSUE		AMENDMENTS		DATE		ISSUE		AMENDMENTS		DATE		ISSUE		AMENDMENTS		DATE		ISSUE	
FDC		BUILDING SERVICES PTY LIMITED		22-24 Johnson Street, Wetherill Park NSW 2157		61 9638 8888		61 9638 8888		61 9638 8888		61 9638 8888		61 9638 8888		61 9638 8888		61 9638 8888		61 9638 8888		61 9638 8888		61 9638 8888	
ARCHITECT		LEFFLER SIMES ARCHITECTS		1/11/20		A		ISSUE		AMENDMENTS		DATE		ISSUE		AMENDMENTS		DATE		ISSUE		AMENDMENTS		DATE	
DEVELOPER		Charter Hall		1/11/20		A		ISSUE		AMENDMENTS		DATE		ISSUE		AMENDMENTS		DATE		ISSUE		AMENDMENTS		DATE	
PROJECT		PROPOSED DISTRIBUTION CENTRE		HORSELEY DRIVE BUSINESS PARK		WETHERILL PARK NSW		1/11/20		A		ISSUE		AMENDMENTS		DATE		ISSUE		AMENDMENTS		DATE		ISSUE	
CONSULTANT		Costin Roe Consulting Pty Ltd		Consulting Engineers		1/11/20		A		ISSUE		AMENDMENTS		DATE		ISSUE		AMENDMENTS		DATE		ISSUE		AMENDMENTS	
PRECISION		COMMUNICATION		ACCOUNTABILITY		PRECISION		COMMUNICATION		ACCOUNTABILITY		PRECISION		COMMUNICATION		ACCOUNTABILITY		PRECISION		COMMUNICATION		ACCOUNTABILITY		PRECISION	
DRAWING TITLE		DRAWING LIST & GENERAL NOTES		DRAWING NO.		CO114.92.18-DA.10		ISSUE		A		AMENDMENTS		DATE		ISSUE		AMENDMENTS		DATE		ISSUE		AMENDMENTS	



EROSION CONTROL NOTES

- 1 ALL CONTROL WORK INCLUDING DIVERSION BANKS AND CATCH DRAINS, V-DRAINS AND SILT FENCES SHALL BE COMPLETED DIRECTLY FOLLOWING THE COMPLETION OF THE EARTHWORKS.
- 2 SILT FENCES AND SILT FENCE RETURNS SHALL BE ERECTED CONVEX TO THE CONTOUR TO POND WATER.
- 3 HAY BALE BARRIERS AND GEO-BARRIC FENCES ARE TO BE CONSTRUCTED TO THE CLEARING OF VEGETATION AND BEFORE REMOVAL OF TOP SOIL.
- 4 ALL EXPOSED EARTH BANKS, DIVERSION AND SLOPE EMBANKMENTS ARE TO BE COVERED AS SOON AS THEY HAVE BEEN FORMED.
- 5 CLEAR WATER IS TO BE DIVERTED AWAY FROM DISTURBED GROUND AND INTO THE DRAINAGE SYSTEM.
- 6 THE CONTRACTOR IS RESPONSIBLE FOR MAINTAINING AND PROVIDING ON GOING ADJUSTMENT TO EROSION CONTROL MEASURES AS REQUIRED DURING CONSTRUCTION.
- 7 ALL SEDIMENT TRAPPING STRUCTURES AND DEVICES ARE TO BE UNSPECTED AFTER STORMS FOR STRUCTURAL DAMAGE OR CLOGGING. TRAPPED MATERIAL IS TO BE REMOVED TO A SAFE, APPROVED LOCATION.
- 8 ALL FINAL EROSION PREVENTION MEASURES INCLUDING THE ESTABLISHMENT OF GRASSLAND ARE TO BE MAINTAINED UNTIL THE END OF THE PROJECT'S LIABILITY PERIOD.
- 9 EARTHWORKS AREAS SHALL BE ROLLED ON A REGULAR BASIS TO SEAL THE EARTHWORKS.
- 10 ALL FILL AREAS ARE TO BE LEFT WITH A BAND AT THE TOP OF THE SLOPE AT THE END OF EACH DAY'S EARTHWORKS. THE HEIGHT OF THE BAND SHALL BE A MINIMUM OF 200MM.
- 11 ALL CUT AND FILL SLOPES ARE TO BE SEEDED AND HYDRATED WITHIN 10 DAYS OF COMPLETION OF THE SITE.
- 12 AFTER REVEGETATION OF THE SITE IS COMPLETE AND THE SITE IS STABLE IN THE OPINION OF A SUITABLY QUALIFIED PERSON ALL TEMPORARY WORK SUCH AS SILT FENCE, DIVERSION DRAINS ETC SHALL BE REMOVED.
- 13 ALL TOPSOIL STOCKPILES ARE TO BE SUITABLY COVERED TO THE SATISFACTION OF THE SITE MANAGER AND WATER EROSION CONTROL FOR CLEARING OR DISTURBANCE BY THE CONTRACTOR'S ACTIVITIES SHALL BE CLEARLY MARKED AND SIGN POSTED, FENCED OFF OR OTHERWISE APPROPRIATELY PROTECTED AGAINST ANY SUCH DISTURBANCE.
- 14 ALL STOCKPILE SITES SHALL BE SITUATED IN AREAS APPROVED FOR SUCH USE BY THE SITE MANAGER. A 6m BUFFER ZONE SHALL EXIST BETWEEN STOCKPILE SITES AND ANY STREAM OR FLOW PATH. ALL STOCKPILES SHALL BE ADEQUATELY PROTECTED FROM EROSION AND CONTAMINATION OF THE SURROUNDING AREA BY USE OF THE MEASURES APPROVED IN THE EROSION AND SEDIMENTATION CONTROL PLAN.
- 15 ACCESS AND EXIT AREAS SHALL INCLUDE SHAKE-DOWN OR OTHER METHODS APPROVED BY THE SITE MANAGER FOR THE REMOVAL OF SOIL MATERIALS FROM THE CONTRACTOR'S TO ENSURE RUNOFF FROM ALL AREAS WHERE THE NATURAL SURFACE IS DISTURBED BY CONSTRUCTION, INCLUDING ACCESS ROADS, GEO-EROSION CONTROL STRUCTURES, AND STOCKPILE SITES. THESE AREAS SHALL BE FREE OF POLLUTANTS BEFORE IT IS EITHER DISPERSED TO STABLE AREAS OR DIRECTED TO NATURAL WATERCOURSES.
- 16 THE CONTRACTOR SHALL PROVIDE AND MAINTAIN SLOPES, CROWN AND DRAINS ON ALL EXCAVATIONS AND EMBANKMENTS TO ENSURE SATISFACTORY DRAINAGE AT ALL TIMES. WATER SHALL NOT BE ALLOWED TO POND ON THE WORKS UNLESS SUCH PONDING IS PART OF AN APPROVED ESCP / SWMP.
- 17

SEDIMENTATION BASIN NOTE:

FOR SEDIMENT & EROSION CONTROL DETAILS REFER TO DRAWING C0115218-00-22.

SEDIMENTATION BASIN SIZING BASED ON RECOMMENDATIONS OF SOILS AND CONSTRUCTION MANAGING URBAN STORMWATER - THE BLUE BOOK.

CAPACITY BASED UPON 5 DAY RAINFALL DEPTH AT 85th PERCENTILE INTENSITY (32.2mm).

APPROXIMATE AREA OF DISTURBED SITE = 19 314

SEDIMENTATION BASINS TO COLLECT RUN-OFF IN EXTREME RAINFALL EVENTS COLLECTED RUN-OFF TO BE ASSESSED BY A GEYSING TO ENSURE COAGULATION OF SEDIMENTS PRIOR TO WATER BEING DISCHARGED TO COUNCIL STORMWATER SYSTEM.

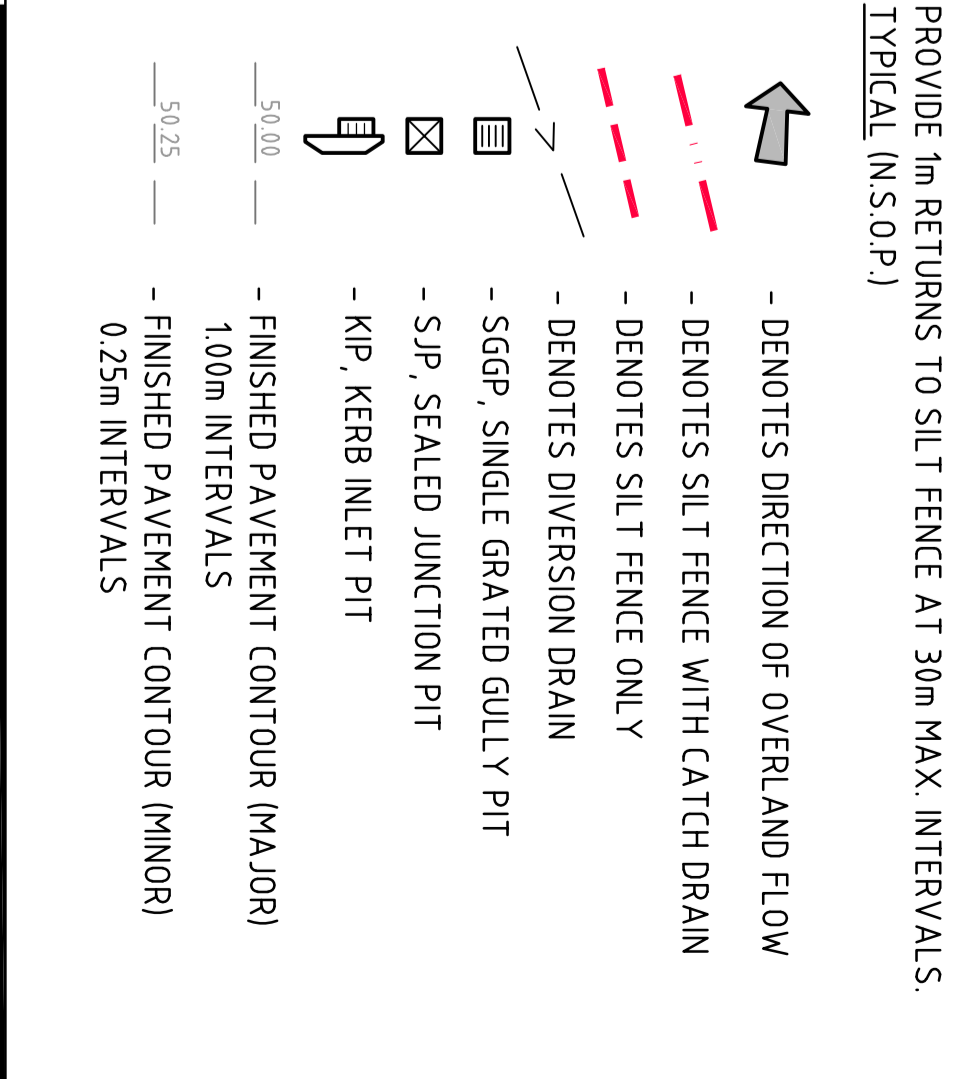
EACH BASIN IS TO HAVE A MARKER PLACED AS PER THE DETAIL TO INDICATE WHEN SEDIMENT IS TO BE REMOVED. REMOVED SEDIMENT IS TO BE CLASSED AND DEWATERED PRIOR TO REMOVAL FROM SITE.

ALLOWANCE TO BE MADE DURING BENCHMARKING OF SITE TO ENSURE RUN-OFF IS DIRECTED TO SEDIMENTATION BASINS.

NOTES:

1. ASSUME TYPE D SOIL (CLAY/SILT/CLAY)
 2. ASSUME GRADE D SOIL (HIGH PLASTICITY AND SHRINK/SWELL PROPERTIES)
- SOIL TYPE ASSESSED FROM GEOTECHNICAL REPORT PROVIDED BY PSM TITLED PSM 1889-009R DATED 10 MAY 2012.

LEGEND:



EROSION AND SEDIMENT CONTROL PLAN
SCALE 1:500

FOR DEVELOPMENT APPLICATION

REVISED ARCHITECTURAL LAYOUT	02/04/20	C
FOR DEVELOPMENT APPLICATION	29/01/20	A
AMENDMENTS	DATE	ISSUE
AMENDMENTS	DATE	ISSUE
AMENDMENTS	DATE	ISSUE

<p>FDBC BUILDING SERVICES PTY LIMITED 22-24 Johnston Street, Melbourne VIC 3000 Tel: 03 9593 7888 Fax: 03 9593 7889</p>	<p>ARCHITECT</p> <p>LEFFLER SIMONS ARCHITECTS</p>	<p>DEVELOPER</p> <p>Charter Hall</p>
<p>PROJECT</p> <p>PROPOSED DISTRIBUTION CENTRE HORLEY DRIVE BUSINESS PARK WETHERILL PARK NSW</p>	<p>CONSULTING ENGINEERS</p> <p>Costin Roe Consulting Pty Ltd Consulting Engineers 100 White Bay, Sydney NSW 2000 Tel: (02) 951-9999 Fax: (02) 951-2788 Email: info@costinroe.com.au</p>	<p>PRECISION COMMUNICATION ACCOUNTABILITY</p> <p>Costin Roe Consulting</p>

PROJECT TITLE: **EROSION AND SEDIMENT CONTROL PLAN**
DRAWING NO: **C01149218_0A20**



PIT SCHEDULE

PIT No	GRATE/RL	TYPE	SIZE	COMMENT
PIT 1	66.80	SGGP	600x600	
PIT 2	65.85	SGGP	900x900	
PIT 3	65.85	SGGP	900x900	
PIT 4	65.85	SGGP	900x900	
PIT 5	65.85	SGGP	900x900	
PIT 6	67.15	SGGP	900x900	
PIT 7	67.15	SGGP	1200x1200	
PIT 8	67.15	SGGP	1200x1200	
PIT 9	67.15	SGGP	1200x1200	
PIT 10	67.15	SGGP	1200x1200	
PIT 11	67.15	SGGP	1200x1200	
PIT 12	64.65	SGGP	1500x1500	
PIT 13	64.85	SGGP	1500x1500	
PIT 14	65.35	SGGP	1500x1500	
PIT 15	65.35	SGGP	1500x1500	
PIT 16	65.35	SGGP	1500x1500	
PIT 17	63.80	SGGP	900x900	
PIT 18	63.80	SGGP	900x900	
PIT 19	63.80	SGGP	900x900	
PIT 20	65.85	SGGP	900x900	
PIT 21	65.85	SGGP	900x900	
PIT 22	65.85	SGGP	900x900	
PIT 23	65.85	SGGP	1200x1200	
PIT 24	65.85	SGGP	1200x1200	
PIT 25	65.85	SGGP	1200x1200	
PIT 26	65.85	SGGP	1200x1200	
PIT 27	65.85	SGGP	1200x1200	
PIT 28	63.80	SGGP	900x900	
PIT 29	63.80	SGGP	1500x1500	
PIT 30	63.55	SGGP	900x900	
PIT 31	65.90	SGGP	900x900	
PIT 32	65.85	SGGP	900x900	
PIT 33	66.35	SGGP	900x900	
PIT 34	66.35	SGGP	900x900	
PIT 35	66.35	SGGP	900x900	
PIT 36	66.00	SGGP	1200x1200	
PIT 37	66.00	SGGP	1200x1200	
PIT 38	66.00	SGGP	1200x1200	
PIT 39	65.88	SGGP	1200x1200	
PIT 40	65.90	SGGP	1200x1200	
PIT 41	65.85	SGGP	1200x1200	
PIT 42	65.85	SGGP	1200x1200	
PIT 43	65.60	SGGP	1200x1200	
PIT 44	65.55	SGGP	1200x1200	
PIT 45	66.13	SGGP	900x900	
PIT 46	65.85	SGGP	900x900	
PIT 47	65.85	SGGP	900x900	
PIT 48	66.55	SGGP	900x900	
PIT 49	63.70	SGGP	900x900	

STORMWATER DRAINAGE NOTES

- ALL STORMWATER WORKS TO BE COMPLETED IN ACCORDANCE WITH THE LOCAL STANDARD AS3903 (2009) PLUMBING AND THE KNICKS (GPPD) SYSTEM HAS BEEN DESIGNED FOR THE 1 IN 20 YEAR ARI STORM EVENT AND THE MAJORS (OVERLAND) SYSTEM HAS BEEN DESIGNED FOR THE 1 IN 100 YEAR ARI STORM EVENT.
- ALL FINISHED PLAYMENT LEVELS SHALL BE AS INDICATED ON FINISHED LEVELS PLANS.
- PIT SIZES SHALL BE AS INDICATED IN THE SCHEDULE WHILE PIPE SIZES AND DETAIL ARE PROVIDED ON PLAN.
- EXISTING STORMWATER PIT LOCATIONS AND INVERT LEVELS TO BE CONFIRMED BY SURVEY PRIOR TO COMMENCING WORKS ON SITE.
- ALL STORMWATER PIPES Ø375 OR GREATER SHALL BE CLASS 2 REINFORCED CONCRETE WITH RUBBER RING JOINTS UNLESS NOTED OTHERWISE.
- PIPES UP TO AND INCLUDING Ø300 TO BE Ø PVC GRADE SN8 UNLESS NOTED OTHERWISE.
- PIPE CLASS NOMINATED ARE FOR IN-SERVICE LOADING CONDITIONS ONLY. CONTRACTOR IS TO MAKE ANY NECESSARY ADJUSTMENTS REQUIRED FOR CONSTRUCTION CONDITIONS.
- ALL CONCRETE PIPES GREATER THAN 1000mm DEEP SHALL BE REINFORCED USING N12-200 EACH WAY CENTERED IN WALL AND BASE. LAP MINIMUM 300mm WHERE REQUIRED. ALL CONCRETE FOR PITS SHALL BE F-32 MPa PRECAST PITS MAY BE USED WITH THE APPROVAL OF THE ENGINEER.
- IN ADDITION TO THEM & ABOVE, ALL CONCRETE PITS GREATER THAN 300mm DEEP SHALL HAVE WALLS AND BASE THICKNESS THAN 300mm DEEP SHALL HAVE PER PIPE LAYING DETAILS. PARTICULAR CARE SHALL BE TAKEN TO ENSURE THAT THE PIPE IS FULLY AND EVENLY SUPPORTED. RAM AND PACK FILLING AROUND AND UNDER BACK OF PIPES AND PIPE FAULTS, WITH NARROW EDGED RAMMERS OR OTHER SUITABLE TAMPING DETAILS.
- WHERE PIPE LINES ENTER PITS, PROVIDE 2m LENGTH OF STOCKING WRAPPED SLOTTED Ø100 Ø PVC TO EACH SIDE OF PIPE.
- ALL SUBSOIL DRAINAGE LINES SHALL BE Ø100 SLOTTED Ø PVC WITH APPROVED FILTER WRAP LAIN IN 300mm WIDE GRANULAR FILTER UNLESS NOTED OTHERWISE. LAY SUBSOIL LINES TO MATCH FALLS OF LAND AND/OR IN 200mm MINIMUM PROVIDE CAPED CLEANING EYE (PROVIDE PROVISIONAL BREATH END OF LINE AND LANDSCAPED INTERFACES, TO BEAR OF RETAINING WALLS AS NOMINATED BY STRUCTURAL ENGINEER, AND AS SHOWN ON PLAN.
- ALL PIPE GRADES IN 100 MINIMUM UNDO.
- PROVIDE STEP IRONS IN PITS DEEPER THAN 1000mm.
- NIN 600 COVER TO PIPE OVER BENEATH ROADS & HWY 4.00 COVER BENEATH LANDSCAPED AND PEDESTRIAN AREAS.
- PIT COVERS IN TRAFFICABLE PAYMENT SHALL BE CLASS 2 THE LAY DUTY. THOSE LOCATED IN NON-TRAFFICABLE AREAS SHALL BE CLASS B (REDUCED DUTY UNO).
- PROVIDE CLEANING EYES (RODDING POINTS) TO PIPES AT ALL CORNERS AND T-JUNCTIONS WHERE NOT PIPES ARE PRESENT.
- PIPE LENGTHS NOMINATED ON PLAN OR CONNECTIONS ARE TO BE NOT REPRESENT ACTUAL LENGTH. THE CONTRACTOR IS TO ALLOW FOR THIS.

FINISHED LEVELS PLAN NOTES:

- LEVELS NATURE IS AHD.
- ALL CONTOUR LINES & SPOT LEVELS INDICATE FINISHED PAVEMENT LEVELS UNDO ON PLAN.
- THE MAJOR CONTOUR INTERVAL IS 0.5m.
- THE MINOR CONTOUR INTERVAL IS 0.1m.
- MINIMUM PAVEMENT GRADE IS TO BE 1100 (1%)
- MAXIMUM PAVEMENT GRADE IS TO BE 1720 (5%) IN CARPARKING AREAS AND 125 (6%) ELSEWHERE.
- MAXIMUM RAMP GRADES ARE TO BE 112 (8.3%) UNDO ON PLAN EXCEPT 120 (5%).
- PERMANENT BATTER SLOPES ARE TO HAVE A MAXIMUM GRADE OF 1:3.
- BATTER SLOPES WITH GRADES AT OR EXCEEDING 1V:4H ARE TO BE TIERED IMMEDIATELY, OR APPROPRIATE EROSION CONTROL IS TO BE PROVIDED TO THE SATISFACTION OF THE ENGINEER.
- ALL FOOTPATHS ARE TO FALL AWAY FROM THE BUILDING AT 2% NOMINAL GRADE.
- ALL PAVEMENTS ARE TO BE SET AT 50mm BELOW THE FINISHED FLOOR LEVEL OF THE WARDHOUSE AND OFFICE AREAS.



REVISION	DATE	ISSUE	AMENDMENTS
REVISED ARCHITECTURAL LAYOUT	04.04.20	C	
REVISED ARCHITECTURAL LAYOUT	02.04.20	D	
REVISED ARCHITECTURAL LAYOUT	20.03.20	E	
FOR INFORMATION ONLY	20.01.19	A	

FDPC
 BUILDING SERVICES PTY LIMITED
 22-24 Johnson Street, Level 2, North Melbourne VIC 3048
 Tel: 03 9378 7888 Fax: 03 9378 7888

LEFFLER SIMES ARCHITECTS

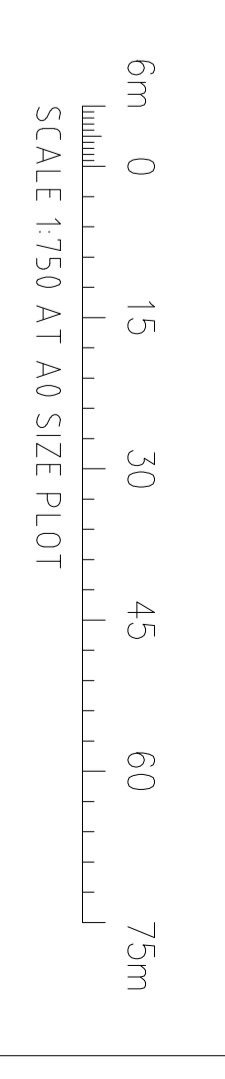
Charter Hall

Costin Roe Consulting Engineers
 Consulting Engineers
 1000 Maitland Street, Suite 2000
 Sydney, NSW 2000
 Tel: (02) 951-9399 Fax: (02) 951-9378
 Email: info@costinroe.com.au

Costin Roe Consulting
 PRECISION | COMMUNICATION | ACCOUNTABILITY

DRAWING KEY PLAN
 C011492.18-DA4.0

FOR DEVELOPMENT APPLICATION



LEGEND

LEVELS DATUM IS AHD

EXISTING SITE LEVELS AND DETAILS BASED ON SURVEY INFORMATION PROVIDED BY HONEYTH & FOWNS DATED 20.06.16

- SGGP - SINGLE GRAATED GULLY PIT
- SJP - SEALED JUNCTION PIT
- KIP - KEEP INLET PIT
- DRAINAGE LINE
- ESTATE DRAINAGE LINE
- OVERLAND FLOW PATH
- FINISHED PAVEMENT (CONTOUR (MAJOR)) 0.5m INTERVALS
- FINISHED PAVEMENT (CONTOUR (MINOR)) 0.1m INTERVALS



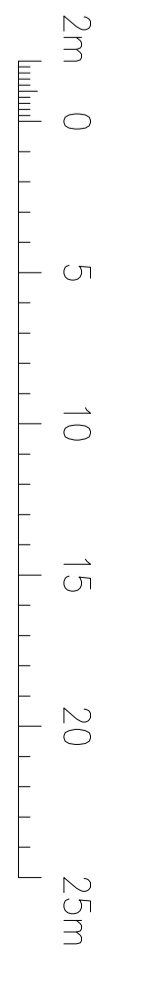
CONCEPT STORMWATER PLAN - SHEET 1
SCALE 1:250

FOR DEVELOPMENT APPLICATION

BREAKLINE - REFER TO DRAWING DA4.3 FOR CONTINUATION

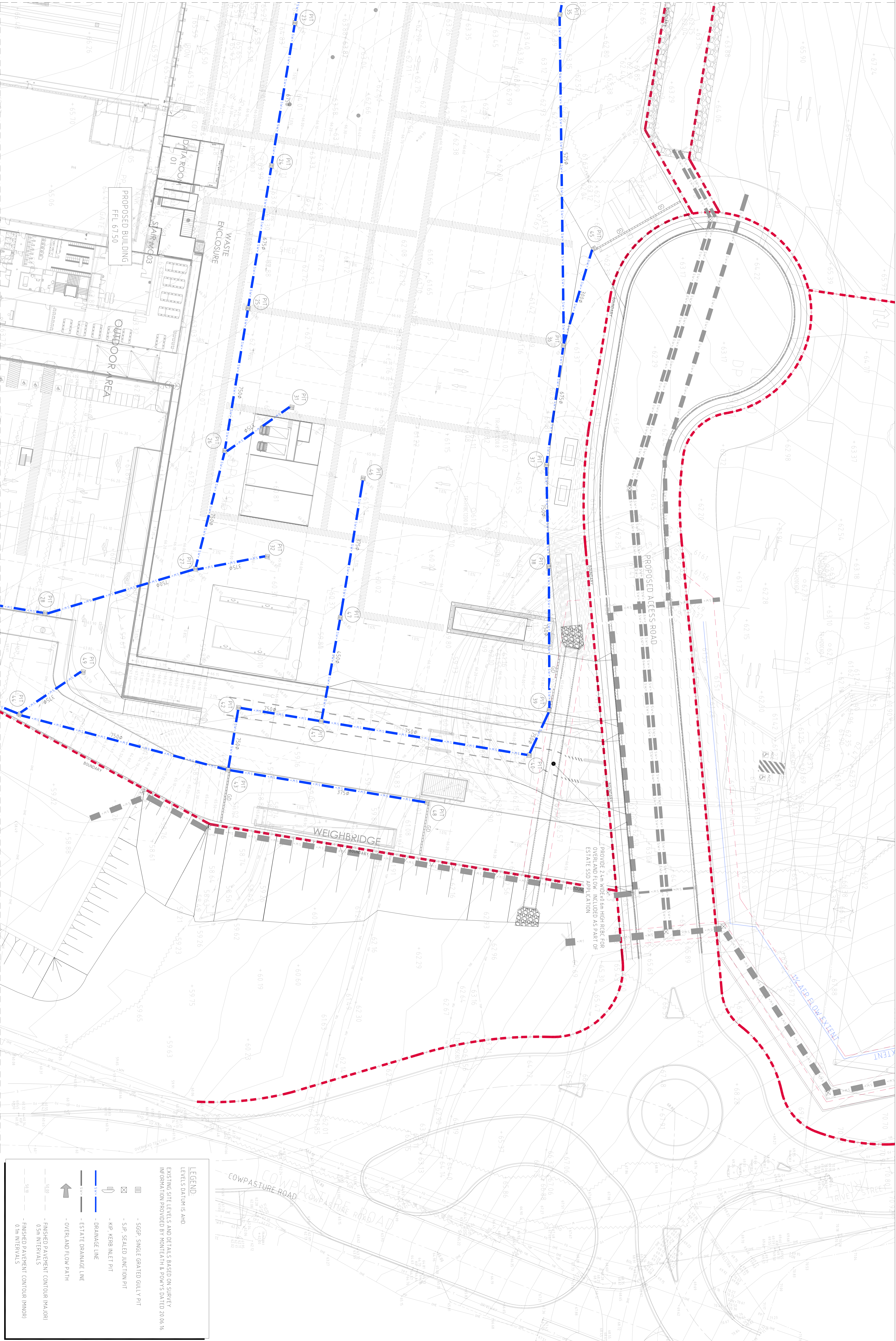
REVISED ARCHITECTURAL LAYOUT	04.06.20	E
REVISED ARCHITECTURAL LAYOUT	02.06.20	D
REVISED ARCHITECTURAL LAYOUT	28.05.20	C
FOR INFORMATION ONLY	20.01.19	A
AMENDMENTS	DATE	ISSUE

FDPC BUILDING SERVICES PTY LIMITED 22-24 JUBILEE STREET, SUITE 101/102 MELBOURNE VIC 3000 TEL: 03 9593 8888 WWW.FDPC.COM.AU	LEFFLER SIMES ARCHITECTS	Charter Hall
PROJECT: PROPOSED DISTRIBUTION CENTRE HORSLEY DRIVE BUSINESS PARK WETHERILL PARK NSW	CONSULTING ENGINEERS MELBOURNE VIC 3000 TEL: (03) 9593 8888 WWW.COSTINROE.COM.AU	COSTIN ROE CONSULTING PTY LTD SUITE 101/102, 22-24 JUBILEE STREET MELBOURNE VIC 3000 TEL: (03) 9593 8888 WWW.COSTINROE.COM.AU
PRECISION COMMUNICATION ACCOUNTABILITY	Costin Roe Consulting	CONCEPT STORMWATER PLAN SHEET 1 DRAWING NO: C0114.92.18 - DA4.1



BREAKLINE - REFER TO DRAWING DA4.2 FOR CONTINUATION

BREAKLINE - REFER TO DRAWING DA4.1 FOR CONTINUATION

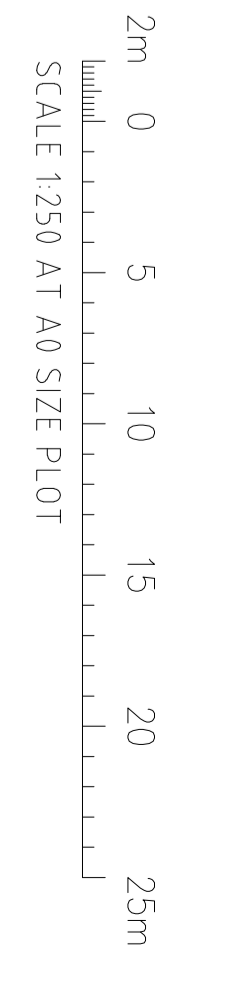


BREAKLINE - REFER TO DRAWING DA4.4 FOR CONTINUATION
 CONCEPT STORMWATER PLAN - SHEET 2
 SCALE 1:250

FOR DEVELOPMENT APPLICATION

LEGEND:
 LEVELS DATUM IS AHD
 EXISTING SITE LEVELS AND DETAILS BASED ON SURVEY INFORMATION PROVIDED BY MONTEATH & POWERS DATED 20.06.16

- SGGP, SINGLE GRATED GULLY PIT
- S-P, SEALED JUNCTION PIT
- K/P, KERB INLET PIT
- DRAINAGE LINE
- ESTATE DRAINAGE LINE
- OVERLAND FLOW PATH
- FINISHED PAVEMENT CONTOUR (MAJOR) 0.5m INTERVALS
- FINISHED PAVEMENT CONTOUR (MINOR) 0.1m INTERVALS



REVISION ARCHITECTURAL LAYOUT	04.06.20	E
REVISION ARCHITECTURAL LAYOUT	02.06.20	D
REVISION ARCHITECTURAL LAYOUT	28.05.20	B
FOR INFORMATION ONLY	20.03.19	A
APPROVED	DATE	SIGNATURE
APPROVED	DATE	SIGNATURE

FDPC
 BUILDING SERVICES PTY LIMITED
 22-24 JUNCTION STREET, SUITE 202
 SYDNEY NSW 1585
 TEL: 02 955 88 88
 FAX: 02 955 88 88
 WWW.FDPC.COM.AU

LEFFLER SIMES ARCHITECTS

Charter Hall

PROJECT:
 PROPOSED DISTRIBUTION CENTRE
 HORSLEY DRIVE BUSINESS PARK
 WETHERILL PARK NSW

CLIENT:
 COSTIN ROE CONSULTING PTY LTD
 CONSULTING ENGINEERS
 100 WHEELER STREET
 WHEELER STREET
 WHEELER STREET
 WHEELER STREET

PRECISION | COMMUNICATION | ACCOUNTABILITY

Costin Roe Consulting

CONCEPT STORMWATER PLAN
 SHEET 2
 DATE: 11/09/2018 - DA4.2

BREAKLINE - REFER TO DRAWING DA4.1 FOR CONTINUATION



BREAKLINE - REFER TO DRAWING DA4.4 FOR CONTINUATION

LEGEND:
LEVELS DATUM IS AHD
EXISTING SITE LEVELS AND DETAILS BASED ON SURVEY INFORMATION PROVIDED BY MONTATH & PONS DATED 20.06.16

- SGP - SINGLE GRAATED GULLY PIT
- SJP - SEALED JUNCTION PIT
- KP - KERB INLET PIT
- DRAINAGE LINE
- ESTATE DRAINAGE LINE
- OVERLAND FLOW PATH
- FINISHED PAVEMENT CONTOUR (MAJOR) 0.5m INTERVALS
- FINISHED PAVEMENT CONTOUR (MINOR) 0.1m INTERVALS

REVISED ARCHITECTURAL LAYOUT	04.04.20	E
REVISED ARCHITECTURAL LAYOUT	02.04.20	D
REVISED ARCHITECTURAL LAYOUT	28.03.20	B
FOR INFORMATION ONLY	20.12.19	A
AMENDMENTS	DATE	ISSUE

FDPC
BUILDING SERVICES PTY LIMITED
22-24 Johnson Street, Fremantle WA 6155
Tel: 9437 8888 Fax: 9437 8888
www.fdp.com.au

Charter Hall
ARCHITECT
LEFFLER SIMES ARCHITECTS

PROPOSED DISTRIBUTION CENTRE
HOSTLEY DRIVE BUSINESS PARK
WETHERILL PARK NSW
MC 100 MC 101 MC 102 MC 103 MC 104 MC 105 MC 106 MC 107 MC 108 MC 109 MC 110 MC 111 MC 112 MC 113 MC 114 MC 115 MC 116 MC 117 MC 118 MC 119 MC 120 MC 121 MC 122 MC 123 MC 124 MC 125 MC 126 MC 127 MC 128 MC 129 MC 130 MC 131 MC 132 MC 133 MC 134 MC 135 MC 136 MC 137 MC 138 MC 139 MC 140 MC 141 MC 142 MC 143 MC 144 MC 145 MC 146 MC 147 MC 148 MC 149 MC 150 MC 151 MC 152 MC 153 MC 154 MC 155 MC 156 MC 157 MC 158 MC 159 MC 160 MC 161 MC 162 MC 163 MC 164 MC 165 MC 166 MC 167 MC 168 MC 169 MC 170 MC 171 MC 172 MC 173 MC 174 MC 175 MC 176 MC 177 MC 178 MC 179 MC 180 MC 181 MC 182 MC 183 MC 184 MC 185 MC 186 MC 187 MC 188 MC 189 MC 190 MC 191 MC 192 MC 193 MC 194 MC 195 MC 196 MC 197 MC 198 MC 199 MC 200 MC 201 MC 202 MC 203 MC 204 MC 205 MC 206 MC 207 MC 208 MC 209 MC 210 MC 211 MC 212 MC 213 MC 214 MC 215 MC 216 MC 217 MC 218 MC 219 MC 220 MC 221 MC 222 MC 223 MC 224 MC 225 MC 226 MC 227 MC 228 MC 229 MC 230 MC 231 MC 232 MC 233 MC 234 MC 235 MC 236 MC 237 MC 238 MC 239 MC 240 MC 241 MC 242 MC 243 MC 244 MC 245 MC 246 MC 247 MC 248 MC 249 MC 250 MC 251 MC 252 MC 253 MC 254 MC 255 MC 256 MC 257 MC 258 MC 259 MC 260 MC 261 MC 262 MC 263 MC 264 MC 265 MC 266 MC 267 MC 268 MC 269 MC 270 MC 271 MC 272 MC 273 MC 274 MC 275 MC 276 MC 277 MC 278 MC 279 MC 280 MC 281 MC 282 MC 283 MC 284 MC 285 MC 286 MC 287 MC 288 MC 289 MC 290 MC 291 MC 292 MC 293 MC 294 MC 295 MC 296 MC 297 MC 298 MC 299 MC 300 MC 301 MC 302 MC 303 MC 304 MC 305 MC 306 MC 307 MC 308 MC 309 MC 310 MC 311 MC 312 MC 313 MC 314 MC 315 MC 316 MC 317 MC 318 MC 319 MC 320 MC 321 MC 322 MC 323 MC 324 MC 325 MC 326 MC 327 MC 328 MC 329 MC 330 MC 331 MC 332 MC 333 MC 334 MC 335 MC 336 MC 337 MC 338 MC 339 MC 340 MC 341 MC 342 MC 343 MC 344 MC 345 MC 346 MC 347 MC 348 MC 349 MC 350 MC 351 MC 352 MC 353 MC 354 MC 355 MC 356 MC 357 MC 358 MC 359 MC 360 MC 361 MC 362 MC 363 MC 364 MC 365 MC 366 MC 367 MC 368 MC 369 MC 370 MC 371 MC 372 MC 373 MC 374 MC 375 MC 376 MC 377 MC 378 MC 379 MC 380 MC 381 MC 382 MC 383 MC 384 MC 385 MC 386 MC 387 MC 388 MC 389 MC 390 MC 391 MC 392 MC 393 MC 394 MC 395 MC 396 MC 397 MC 398 MC 399 MC 400 MC 401 MC 402 MC 403 MC 404 MC 405 MC 406 MC 407 MC 408 MC 409 MC 410 MC 411 MC 412 MC 413 MC 414 MC 415 MC 416 MC 417 MC 418 MC 419 MC 420 MC 421 MC 422 MC 423 MC 424 MC 425 MC 426 MC 427 MC 428 MC 429 MC 430 MC 431 MC 432 MC 433 MC 434 MC 435 MC 436 MC 437 MC 438 MC 439 MC 440 MC 441 MC 442 MC 443 MC 444 MC 445 MC 446 MC 447 MC 448 MC 449 MC 450 MC 451 MC 452 MC 453 MC 454 MC 455 MC 456 MC 457 MC 458 MC 459 MC 460 MC 461 MC 462 MC 463 MC 464 MC 465 MC 466 MC 467 MC 468 MC 469 MC 470 MC 471 MC 472 MC 473 MC 474 MC 475 MC 476 MC 477 MC 478 MC 479 MC 480 MC 481 MC 482 MC 483 MC 484 MC 485 MC 486 MC 487 MC 488 MC 489 MC 490 MC 491 MC 492 MC 493 MC 494 MC 495 MC 496 MC 497 MC 498 MC 499 MC 500 MC 501 MC 502 MC 503 MC 504 MC 505 MC 506 MC 507 MC 508 MC 509 MC 510 MC 511 MC 512 MC 513 MC 514 MC 515 MC 516 MC 517 MC 518 MC 519 MC 520 MC 521 MC 522 MC 523 MC 524 MC 525 MC 526 MC 527 MC 528 MC 529 MC 530 MC 531 MC 532 MC 533 MC 534 MC 535 MC 536 MC 537 MC 538 MC 539 MC 540 MC 541 MC 542 MC 543 MC 544 MC 545 MC 546 MC 547 MC 548 MC 549 MC 550 MC 551 MC 552 MC 553 MC 554 MC 555 MC 556 MC 557 MC 558 MC 559 MC 560 MC 561 MC 562 MC 563 MC 564 MC 565 MC 566 MC 567 MC 568 MC 569 MC 570 MC 571 MC 572 MC 573 MC 574 MC 575 MC 576 MC 577 MC 578 MC 579 MC 580 MC 581 MC 582 MC 583 MC 584 MC 585 MC 586 MC 587 MC 588 MC 589 MC 590 MC 591 MC 592 MC 593 MC 594 MC 595 MC 596 MC 597 MC 598 MC 599 MC 600 MC 601 MC 602 MC 603 MC 604 MC 605 MC 606 MC 607 MC 608 MC 609 MC 610 MC 611 MC 612 MC 613 MC 614 MC 615 MC 616 MC 617 MC 618 MC 619 MC 620 MC 621 MC 622 MC 623 MC 624 MC 625 MC 626 MC 627 MC 628 MC 629 MC 630 MC 631 MC 632 MC 633 MC 634 MC 635 MC 636 MC 637 MC 638 MC 639 MC 640 MC 641 MC 642 MC 643 MC 644 MC 645 MC 646 MC 647 MC 648 MC 649 MC 650 MC 651 MC 652 MC 653 MC 654 MC 655 MC 656 MC 657 MC 658 MC 659 MC 660 MC 661 MC 662 MC 663 MC 664 MC 665 MC 666 MC 667 MC 668 MC 669 MC 670 MC 671 MC 672 MC 673 MC 674 MC 675 MC 676 MC 677 MC 678 MC 679 MC 680 MC 681 MC 682 MC 683 MC 684 MC 685 MC 686 MC 687 MC 688 MC 689 MC 690 MC 691 MC 692 MC 693 MC 694 MC 695 MC 696 MC 697 MC 698 MC 699 MC 700 MC 701 MC 702 MC 703 MC 704 MC 705 MC 706 MC 707 MC 708 MC 709 MC 710 MC 711 MC 712 MC 713 MC 714 MC 715 MC 716 MC 717 MC 718 MC 719 MC 720 MC 721 MC 722 MC 723 MC 724 MC 725 MC 726 MC 727 MC 728 MC 729 MC 730 MC 731 MC 732 MC 733 MC 734 MC 735 MC 736 MC 737 MC 738 MC 739 MC 740 MC 741 MC 742 MC 743 MC 744 MC 745 MC 746 MC 747 MC 748 MC 749 MC 750 MC 751 MC 752 MC 753 MC 754 MC 755 MC 756 MC 757 MC 758 MC 759 MC 760 MC 761 MC 762 MC 763 MC 764 MC 765 MC 766 MC 767 MC 768 MC 769 MC 770 MC 771 MC 772 MC 773 MC 774 MC 775 MC 776 MC 777 MC 778 MC 779 MC 780 MC 781 MC 782 MC 783 MC 784 MC 785 MC 786 MC 787 MC 788 MC 789 MC 790 MC 791 MC 792 MC 793 MC 794 MC 795 MC 796 MC 797 MC 798 MC 799 MC 800 MC 801 MC 802 MC 803 MC 804 MC 805 MC 806 MC 807 MC 808 MC 809 MC 810 MC 811 MC 812 MC 813 MC 814 MC 815 MC 816 MC 817 MC 818 MC 819 MC 820 MC 821 MC 822 MC 823 MC 824 MC 825 MC 826 MC 827 MC 828 MC 829 MC 830 MC 831 MC 832 MC 833 MC 834 MC 835 MC 836 MC 837 MC 838 MC 839 MC 840 MC 841 MC 842 MC 843 MC 844 MC 845 MC 846 MC 847 MC 848 MC 849 MC 850 MC 851 MC 852 MC 853 MC 854 MC 855 MC 856 MC 857 MC 858 MC 859 MC 860 MC 861 MC 862 MC 863 MC 864 MC 865 MC 866 MC 867 MC 868 MC 869 MC 870 MC 871 MC 872 MC 873 MC 874 MC 875 MC 876 MC 877 MC 878 MC 879 MC 880 MC 881 MC 882 MC 883 MC 884 MC 885 MC 886 MC 887 MC 888 MC 889 MC 890 MC 891 MC 892 MC 893 MC 894 MC 895 MC 896 MC 897 MC 898 MC 899 MC 900 MC 901 MC 902 MC 903 MC 904 MC 905 MC 906 MC 907 MC 908 MC 909 MC 910 MC 911 MC 912 MC 913 MC 914 MC 915 MC 916 MC 917 MC 918 MC 919 MC 920 MC 921 MC 922 MC 923 MC 924 MC 925 MC 926 MC 927 MC 928 MC 929 MC 930 MC 931 MC 932 MC 933 MC 934 MC 935 MC 936 MC 937 MC 938 MC 939 MC 940 MC 941 MC 942 MC 943 MC 944 MC 945 MC 946 MC 947 MC 948 MC 949 MC 950 MC 951 MC 952 MC 953 MC 954 MC 955 MC 956 MC 957 MC 958 MC 959 MC 960 MC 961 MC 962 MC 963 MC 964 MC 965 MC 966 MC 967 MC 968 MC 969 MC 970 MC 971 MC 972 MC 973 MC 974 MC 975 MC 976 MC 977 MC 978 MC 979 MC 980 MC 981 MC 982 MC 983 MC 984 MC 985 MC 986 MC 987 MC 988 MC 989 MC 990 MC 991 MC 992 MC 993 MC 994 MC 995 MC 996 MC 997 MC 998 MC 999 MC 1000

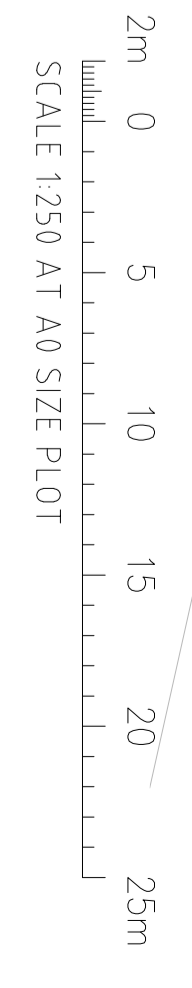
Coslin Roe Consulting Pty Ltd
Consulting Engineers
Wetherill Park NSW
Tel: (02) 951-5199 Fax: (02) 951-5274
www.coslinroec.com.au

Coslin Roe Consulting
PRECISION | COMMUNICATION | ACCOUNTABILITY

CONCEPT STORMWATER PLAN
SHEET 3
DATE: 01/11/2018 - DA4.3

CONCEPT STORMWATER PLAN - SHEET 3
SCALE 1:250

FOR DEVELOPMENT APPLICATION



BREAKLINE - REFER TO DRAWING DA43 FOR CONTINUATION

BREAKLINE - REFER TO DRAWING DA2 FOR CONTINUATION



LEGEND:
 LEVELS DATUM IS AHD
 EXISTING SITE LEVELS AND DETAILS BASED ON SURVEY INFORMATION PROVIDED BY MONTEATH & POWERS DATED 20.06.16

- SGGP, SINGLE GRATED GULLY PIT
- S.P. SEALED JUNCTION PIT
- KIP KERB INLET PIT
- DRAINAGE LINE
- ESTATE DRAINAGE LINE
- OVERLAND FLOW PATH
- FINISHED PAVEMENT CONTOUR (MADJ) 0.5m INTERVALS
- FINISHED PAVEMENT CONTOUR (MADJ) 0.1m INTERVALS

CONCEPT STORMWATER PLAN - SHEET 4
 SCALE 1:250

FOR DEVELOPMENT APPLICATION

REVISED ARCHITECTURAL LAYOUT	04.04.20	C
REVISED ARCHITECTURAL LAYOUT	02.04.20	D
REVISED ARCHITECTURAL LAYOUT	28.03.20	E
FOR INFORMATION ONLY	20.11.19	A
AMENDMENTS	DATE	ISSUE
AMENDMENTS	DATE	ISSUE

ARCHITECT
 LEFFLER SIMES ARCHITECTS

DEVELOPER
 Charter Hall

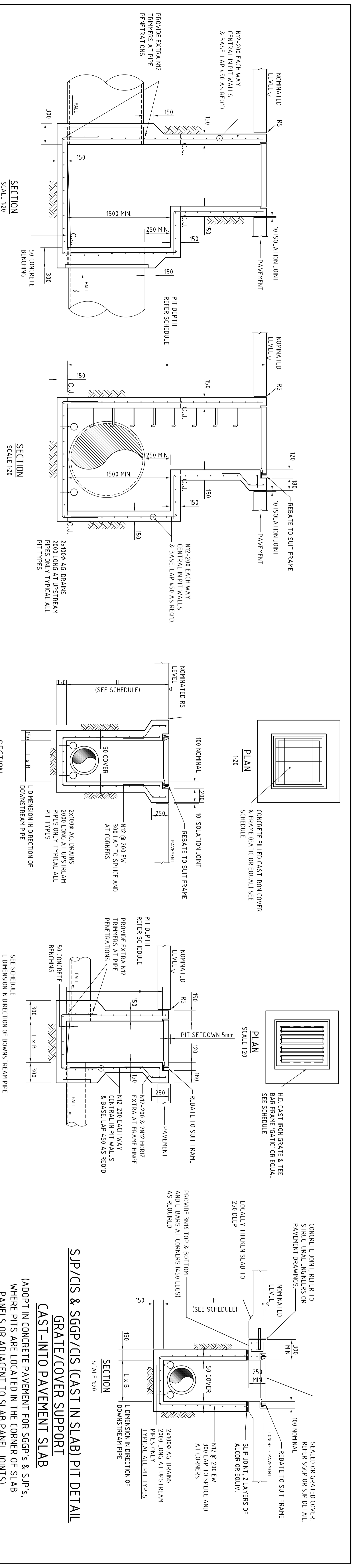
PROJECT
 PROPOSED DISTRIBUTION CENTRE
 HOSTLEY DRIVE BUSINESS PARK
 WETHERILL PARK NSW

CONSULTING ENGINEERS
 Costin Roe Consulting Pty Ltd
 Consulting Engineers
 100/102 Stirling Street
 Maitland NSW 2320
 Tel: (08) 931-9399 Fax: (08) 931-2874
 Email: info@costinroe.com.au

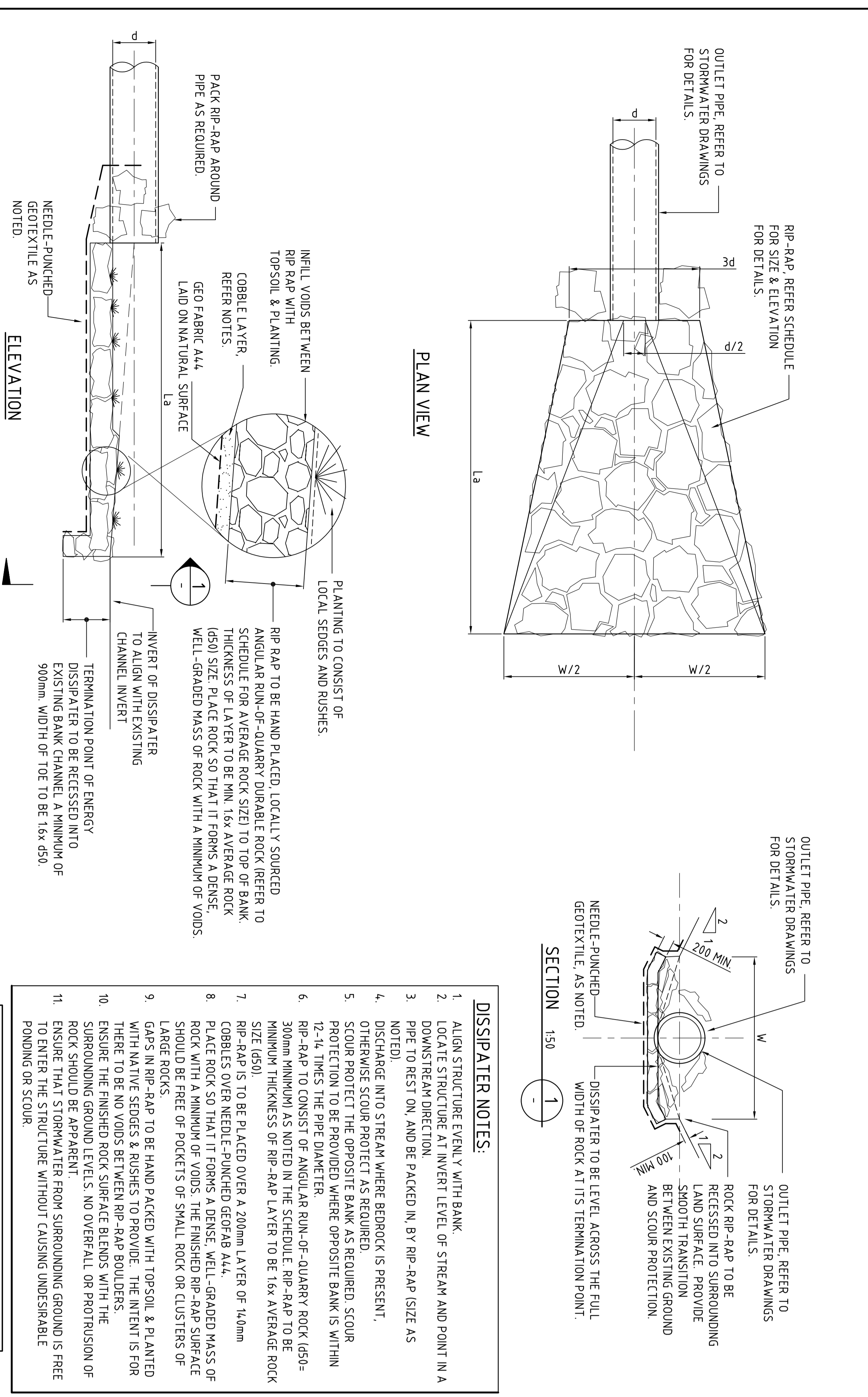
PRECISION | COMMUNICATION | ACCOUNTABILITY

COSTIN ROE CONSULTING

CONCEPT STORMWATER PLAN
 SHEET 4
 DRAWING NO: C0119218 - DA44



TAPERED SEALED JUNCTION PIT - SJP



STORMWATER OUTLET DISSIPATER

FOR DEVELOPMENT APPLICATION

ESB DEVELOPMENT APPLICATION	ZS1913	A	AMENDMENTS	DATE	SIZE
AMENDMENTS					
AMENDMENTS					
AMENDMENTS					

FDPC
 BUILDING SERVICES PTY LIMITED
 22-24 Northbourne Avenue, Canberra ACT 2600
 Ph: 02 620 9800 Fax: 02 620 9800

LEFFLER SIMES ARCHITECTS

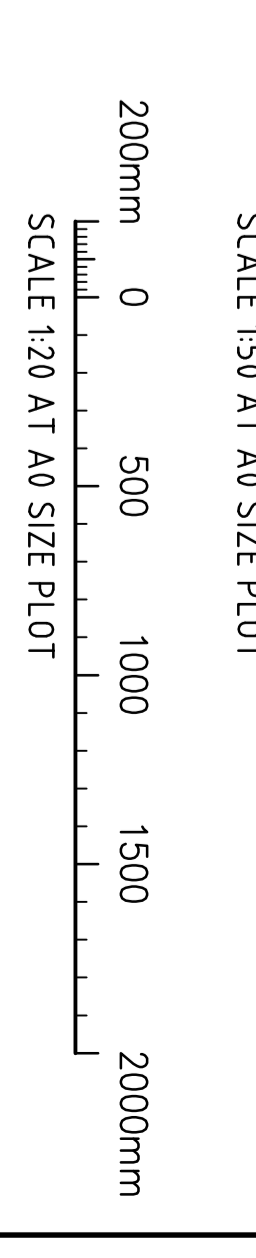
Charter Hall

PROPOSED DISTRIBUTION CENTRE
 HORLEY DRIVE BUSINESS PARK
 WETHERILL PARK NSW

Costin Roe Consulting Pty Ltd.
 Consulting Engineers
 100/101 Stirling Street, Sydney NSW 2000
 Ph: (02) 951-9399 Fax: (02) 951-9378
 Email: info@costinroe.com.au

PRECISION COMMUNICATION ACCOUNTABILITY

CONCEPT STORMWATER DETAILS
 DRAWING NO: C011492-18-DAL5



BREAKLINE - REFER TO DRAWING DA51 FOR CONTINUATION

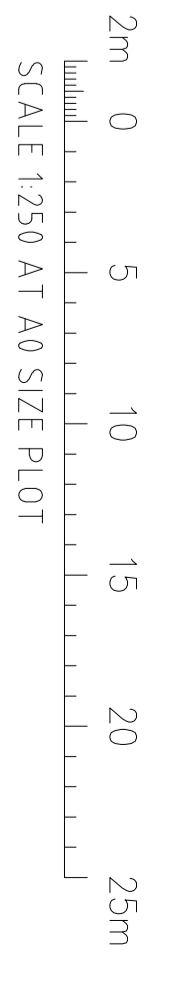


BREAKLINE - REFER TO DRAWING DA54 FOR CONTINUATION

FOR DEVELOPMENT APPLICATION

LEGEND:
LEVELS DATUM IS AHD
EXISTING SITE LEVELS AND DETAILS BASED ON SURVEY INFORMATION PROVIDED BY MONTEATH & POWERS DATED 20.06.16

	- SGGP, SINGLE GATED GULLY PIT
	- SJP, SEALED JUNCTION PIT
	- KIP, KERB INLET PIT
	- FINISHED PAVEMENT CONTOUR (MAJOR) 0.5m INTERVALS
	- FINISHED PAVEMENT CONTOUR (MINOR) 0.1m INTERVALS
	- FINISHED PAVEMENT SPOT HEIGHT



REVISION ARCHITECTURAL LAYOUT	04.06.20	C
REVISION ARCHITECTURAL LAYOUT	02.06.20	D
REVISION ARCHITECTURAL LAYOUT	28.05.20	E
FOR INFORMATION ONLY	20.11.19	A
AMENDMENTS	DATE	ISSUE
AMENDMENTS	DATE	ISSUE

CLIENT: BUILDING SERVICES PTY LIMITED
22-24 JUNCTION STREET, SUITE 2002, SYDNEY NSW 1588
TEL: 02 953 8888 FAX: 02 953 8888

ARCHITECT: LEFFLER SIMONS ARCHITECTS

ENGINEER: Charter Hall

PROJECT: PROPOSED DISTRIBUTION CENTRE
HORLEY DRIVE BUSINESS PARK
WETHERILL PARK NSW

CONSULTING ENGINEERS: Costin Roe Consulting Pty Ltd
Woolah Bay, Sydney NSW 2000
Tel: (02) 951-9199 Fax: (02) 951-9274
Email: info@costinroe.com.au

PRECISION | COMMUNICATION | ACCOUNTABILITY

DYNAMIC FILE
FINISHED LEVELS PLAN
SHEET 2
PROJECT NO: C01149218 - DA52

BREAKLINE - REFER TO DRAWING DA54 FOR CONTINUATION



LEGEND:

LEVELS DATUM IS AHD

EXISTING SITE LEVELS AND DETAILS BASED ON SURVEY INFORMATION PROVIDED BY MONTAGNIER & PONS DATED 20.06.16

	-SGP- SINGLE GRATED GULLY PIT
	-SJP- SEALED JUNCTION PIT
	-KP- KERB INLET PIT
	-FINISHED PAVEMENT CONTOUR (MAJOR)
	-FINISHED PAVEMENT CONTOUR (MINOR)
	0.5m INTERVALS
	0.1m INTERVALS
	-FINISHED PAVEMENT SPOT HEIGHT

REVISION ARCHITECTURAL LAYOUT	04.04.20	E
REVISION ARCHITECTURAL LAYOUT	02.04.20	D
REVISION ARCHITECTURAL LAYOUT	20.03.20	C
FOR INFORMATION ONLY	20.01.19	A
AMENDMENTS	DATE	ISSUE
AMENDMENTS	DATE	ISSUE

FDPC
BUILDING SERVICES PTY LIMITED
22-24 Johnson Street, Level 4, Sydney NSW 2000
Tel: 02 9250 8888 Fax: 02 9250 8888

LEFFLER SIMES ARCHITECTS

Charter Hall

FOR DEVELOPMENT APPLICATION

FINISHED LEVELS PLAN - SHEET 3
SCALE 1:250

COSTIN ROE CONSULTING
CONSULTING ENGINEERS
100/102-104 WILSON ROAD, SYDNEY NSW 2000
Tel: (02) 951-9399 Fax: (02) 951-9378
Email: info@costinroe.com.au

COSTIN ROE CONSULTING
PRECISION | COMMUNICATION | ACCOUNTABILITY

FINISHED LEVELS PLAN SHEET 3
DRAWING NO: C0114.92.18 - DA53

BREAKLINE - REFER TO DRAWING DA54 FOR CONTINUATION

BREAKLINE - REFER TO DRAWING DA53 FOR CONTINUATION

BREAKLINE - REFER TO DRAWING DA52 FOR CONTINUATION



LEGEND:
LEVELS DATUM IS AHD

EXISTING SITE LEVELS AND DETAILS BASED ON SURVEY INFORMATION PROVIDED BY MONTEATH & POWERS DATED 20.06.16

	- SGGP, SINGLE GULLED PIT
	- S-P, SEALED JUNCTION PIT
	- KIP, KERB INLET PIT
	- FINISHED PAVEMENT CONTOUR (MAJOR)
	- FINISHED PAVEMENT CONTOUR (MINOR)
	- FINISHED PAVEMENT SPOT HEIGHT



FOR DEVELOPMENT APPLICATION

FINISHES LEVELS PLAN - SHEET 4
SCALE 1:250

REVISION ARCHITECTURAL LAYOUT	04.04.20	E
REVISION ARCHITECTURAL LAYOUT	02.04.20	D
REVISION ARCHITECTURAL LAYOUT	28.03.20	C
FOR INFORMATION ONLY	20.07.19	A
AMENDMENTS	DATE	ISSUE

FDPC BUILDING SERVICES PTY LIMITED 22-24 Johnson Street, Level 10/11, Perth, WA 6000 Tel: (08) 9437 7888 Fax: (08) 9437 7888	LEFFLER SIMES ARCHITECTS	Charter Hall	Costin Roe Consulting Pty Ltd Consulting Engineers 1000 Maitland Street, Perth WA 6000 Tel: (08) 951-5999 Fax: (08) 948-2878 Email: info@costinroe.com.au
--	---------------------------------	---------------------	--

PROJECT: PROPOSED DISTRIBUTION CENTRE HOSTLEY DRIVE BUSINESS PARK, WETHERILL PARK, NSW
 CLIENT: HCC
 DATE: DEC 99
 DRAWN BY: W.W.
 CHECKED BY: J.A.S.
 SCALE: 1:250

Costin Roe Consulting
PRECISION | COMMUNICATION | ACCOUNTABILITY

DRAWING TITLE: FINISHES LEVELS PLAN
 SHEET 4
 PROJECT NO: C01149218 - DA54