

## ATC LEGER LAWN

LANDSCAPE ARCHITECTURAL DEVELOPMENT APPLICATION

Issue: E

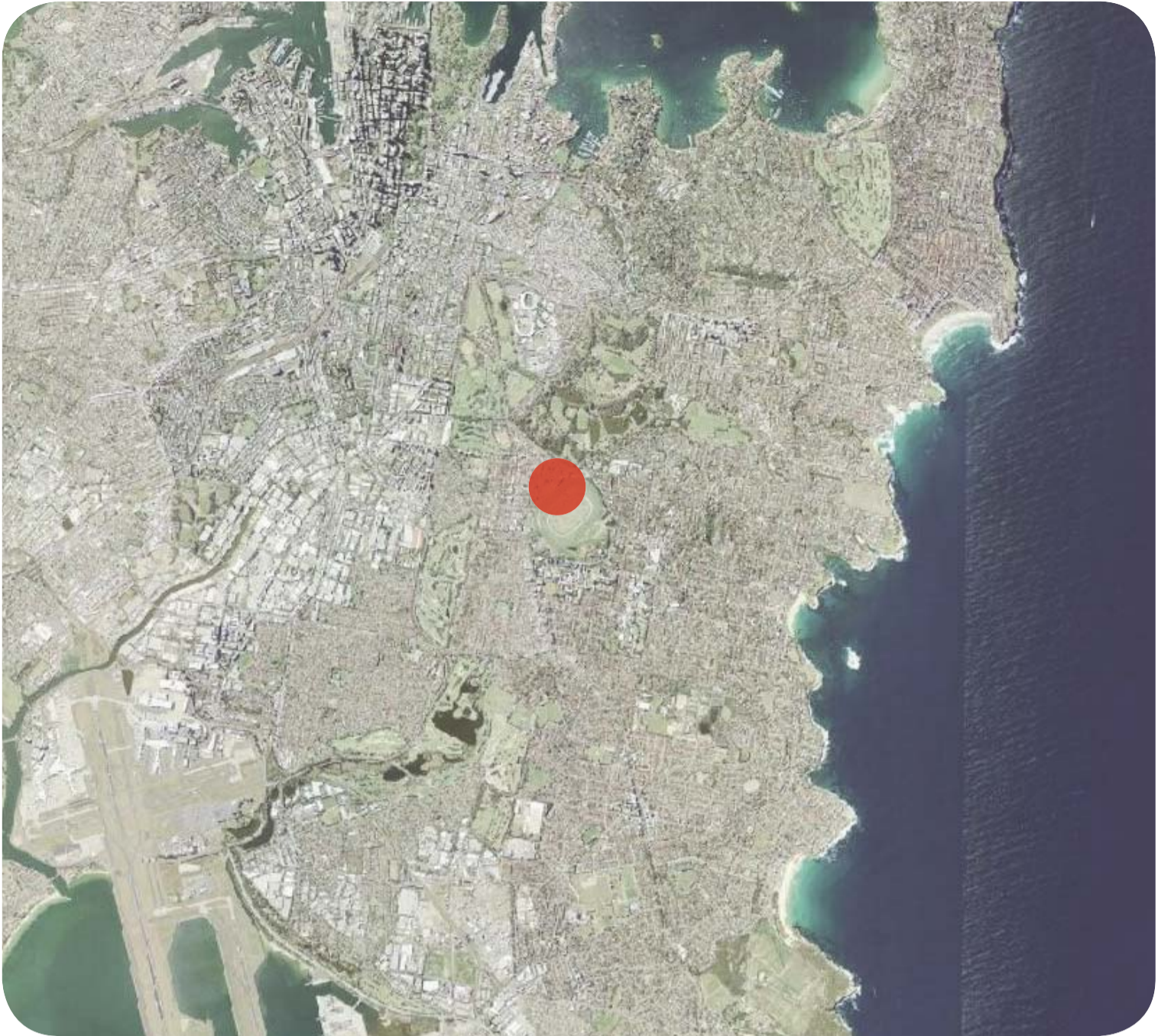
Date: 22.01.2020

FOR:  
MOSTYN COPPER GROUP

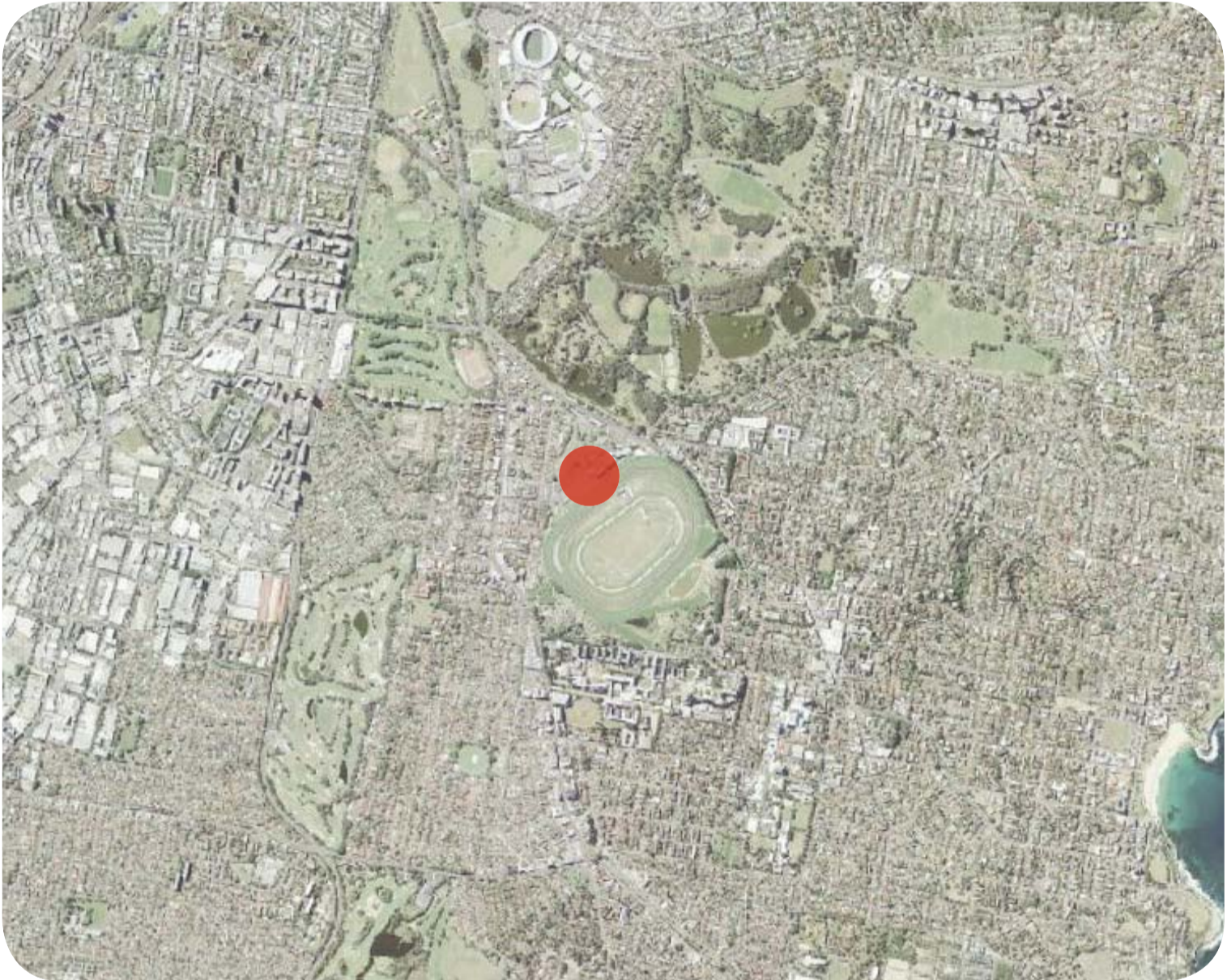
**MCG**  
MOSTYN COPPER GROUP

**Sturt Noble**  
Associates

LOCATION & CONTEXT



GREATER CONTEXT

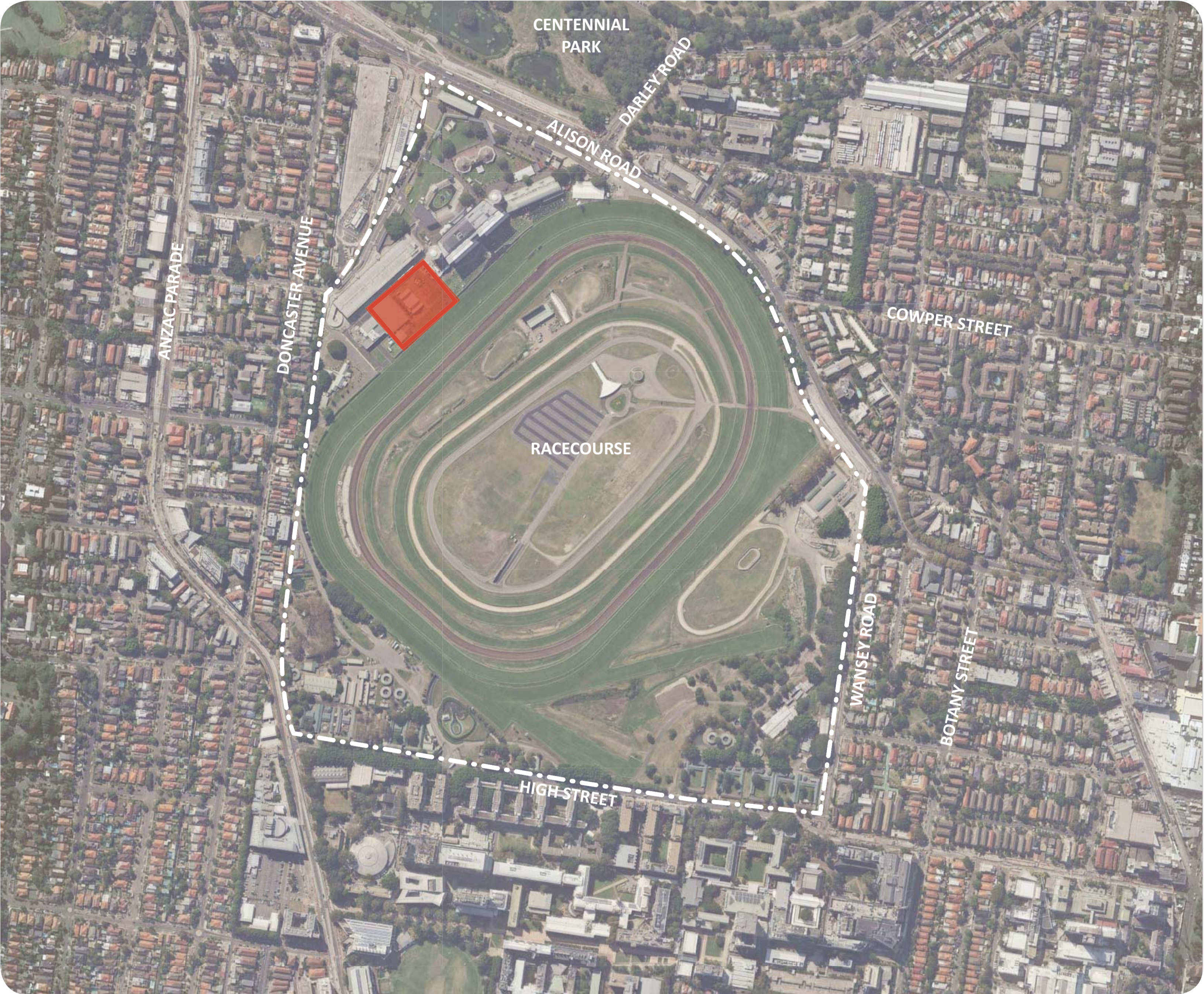


LOCAL CONTEXT

ATC Leger Lawn and proposed Winx Stand is located 5.5km South-East of Sydney CBD and is part of the Royal Randwick Racecourse.

The site sits between the Queen Elizabeth II Grandstand, the multi-deck carpark and the race track.

The proposed development is a 100m long grandstand called the ‘Winx Stand’ and will be two stories tall. Surrounding the building will be a landscape terrace for race viewing, the laneway and a long stretch of landscaped area that will be the location of portable eateries.



ATC LEGER LAWN DEVELOPMENT SITE

The landscape viewing terrace will comprise of in-situ concrete terraced steps oriented toward the finish line, which will allow a large volume of people to view the races, and create an atmosphere that facilitates socialising.

The landscaped zones will be integrated with lush low maintenance planting, in keeping with other areas of the spectators precinct at the racecourse. Flowering native vines to steel cables and cascading roof planters will provide greenery and ambiance. Further terraced areas

will be created through integrating planting and seating into stairways, which will create many multiple casual seating spaces that can be used for small gatherings of people, and compliment casual seating and utility adjacent to the laneway.

The planting palette will be consistent to other species found around Randwick Racecourse, to create a landscape cohesive with the greater precinct.

**Sturt Noble**  
Associates

Suite 91, L5, 330 Wattle St  
Ultimo NSW 2007  
T. 02 9211 3744  
W. [www.sturtnoble.com.au](http://www.sturtnoble.com.au)  
landscape architecture  
environmental & urban design

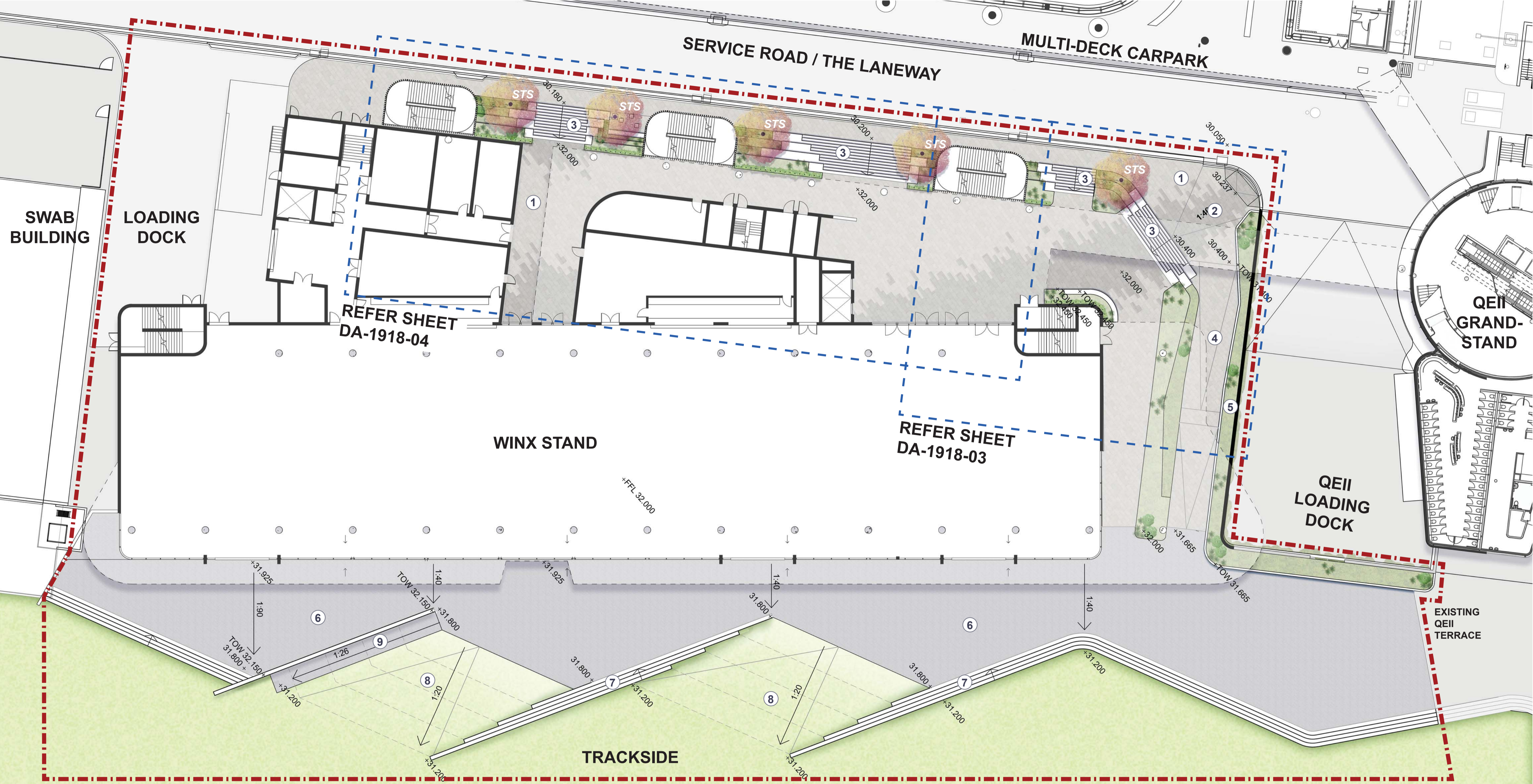
PROJECT  
**ATC WINX STAND, LEGER LAWN**

CLIENT  
**MOSTYN COPPER GROUP**

DRAWING  
**LOCATION & CONTEXT**

DRAWING No.	ISSUE	DRAWN	DATE
<b>DA-1918-01</b>	<b>D</b>	<b>jw/wl</b>	<b>30.10.2019</b>

GROUND FLOOR



MASTERPLAN

NOTES

1. Unit paving to main entry
2. Two tone paving defines entry to the Winx Stand
3. Concrete stairs, seating edges and planting create active edges and entries
4. Access path
5. Raised planter creates green edge to path. Trailing plants green wall of the QEII loading dock
6. Asphalt terrace provides an outdoor spill out space facing the race track and links into the existing terrace in front of the QEII Grandstand
7. Terraced stairs define the outdoor terrace, create viewing edges oriented toward the finish line and provide access to the open lawn areas below
8. Graded lawn areas provide a link between the terrace and the open lawn for people and maintenance vehicles
9. 2m wide asphalt path to trackside lawn area (1:26 grade over 16m). Adjacent lawn to match grade of path.

LEGEND

- Site Boundary
- +98.000 Proposed levels  
EX = Existing level  
TOW = Top of wall
- Contours
- X:XX Proposed falls
- XX Proposed trees. Refer to planting schedule on DA-1918-06 for species

**Sturt Noble Associates**

Suite 91, L5, 330 Wattle St  
Ultimo NSW 2007  
T. 02 9211 3744  
W. www.sturt-noble.com.au  
landscape architecture  
environmental & urban design

PROJECT  
**ATC WINX STAND, LEGER LAWN**

CLIENT  
**MOSTYN COPPER GROUP**

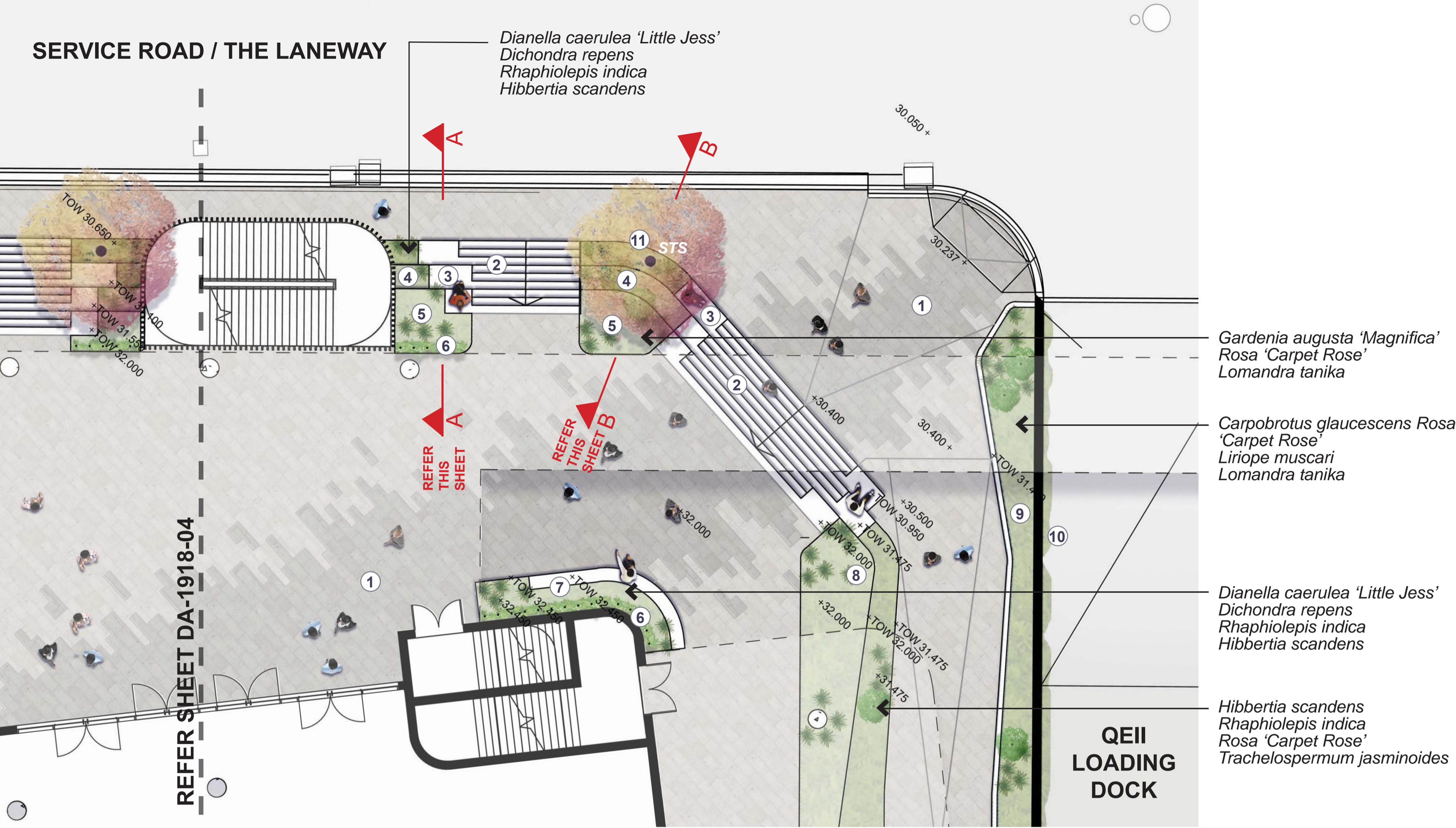
DRAWING  
**GROUND FLOOR MASTERPLAN**

DRAWING No.	ISSUE	DRAWN	DATE
DA-1918-02	E	jw/wl	22.01.2020

Scale: 0 2 10m  
1:200@A1  
1:400@A3

ACN: 164 245 514 ABN: 99 164 245 514  
THIS DRAWING SHOULD BE READ IN CONJUNCTION WITH ALL RELEVANT CONTRACTS, SPECIFICATIONS, REPORTS AND DRAWINGS. COPYRIGHT OF THIS DRAWING IS VESTED IN STURT NOBLE ASSOCIATES PTY LTD.

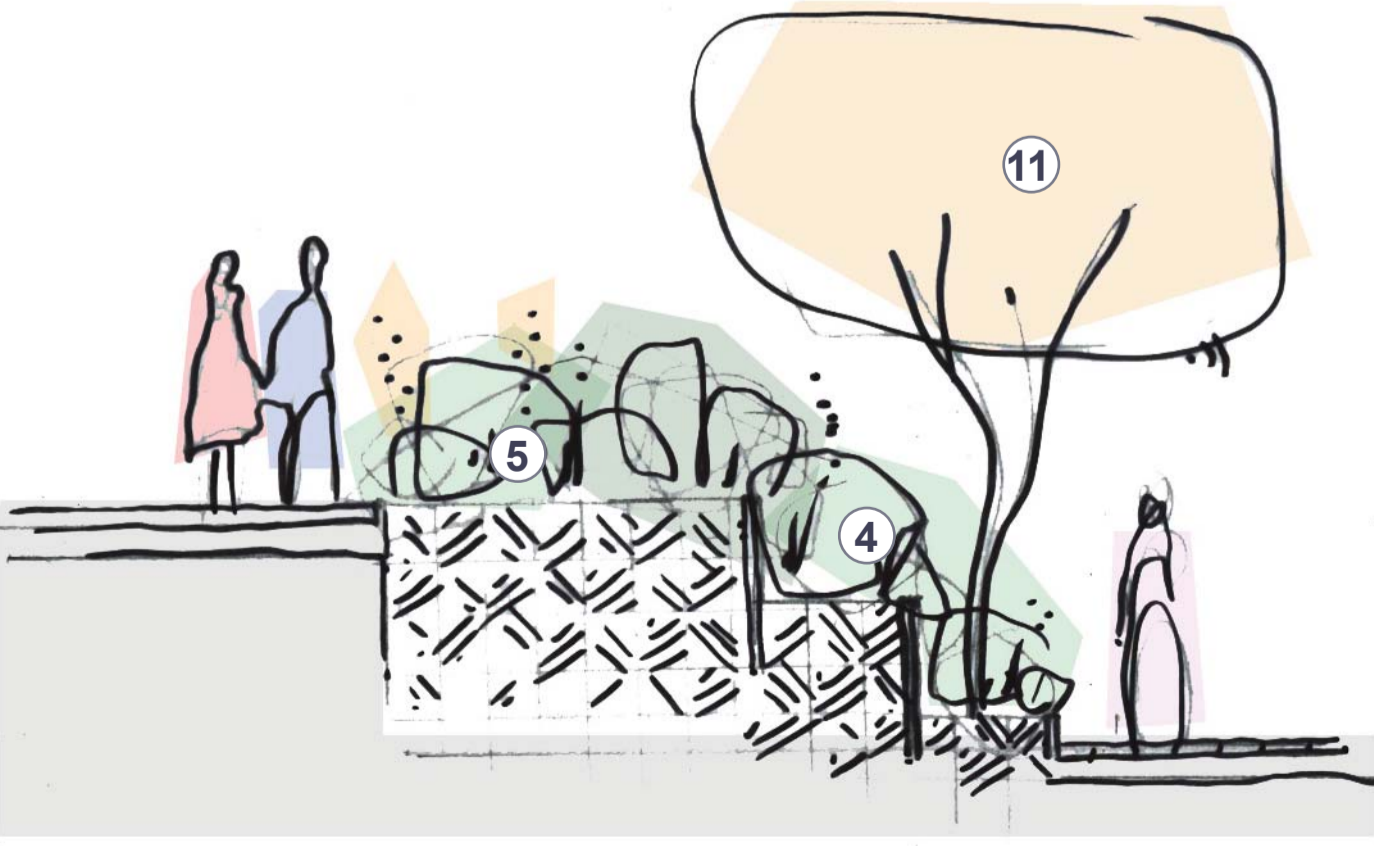
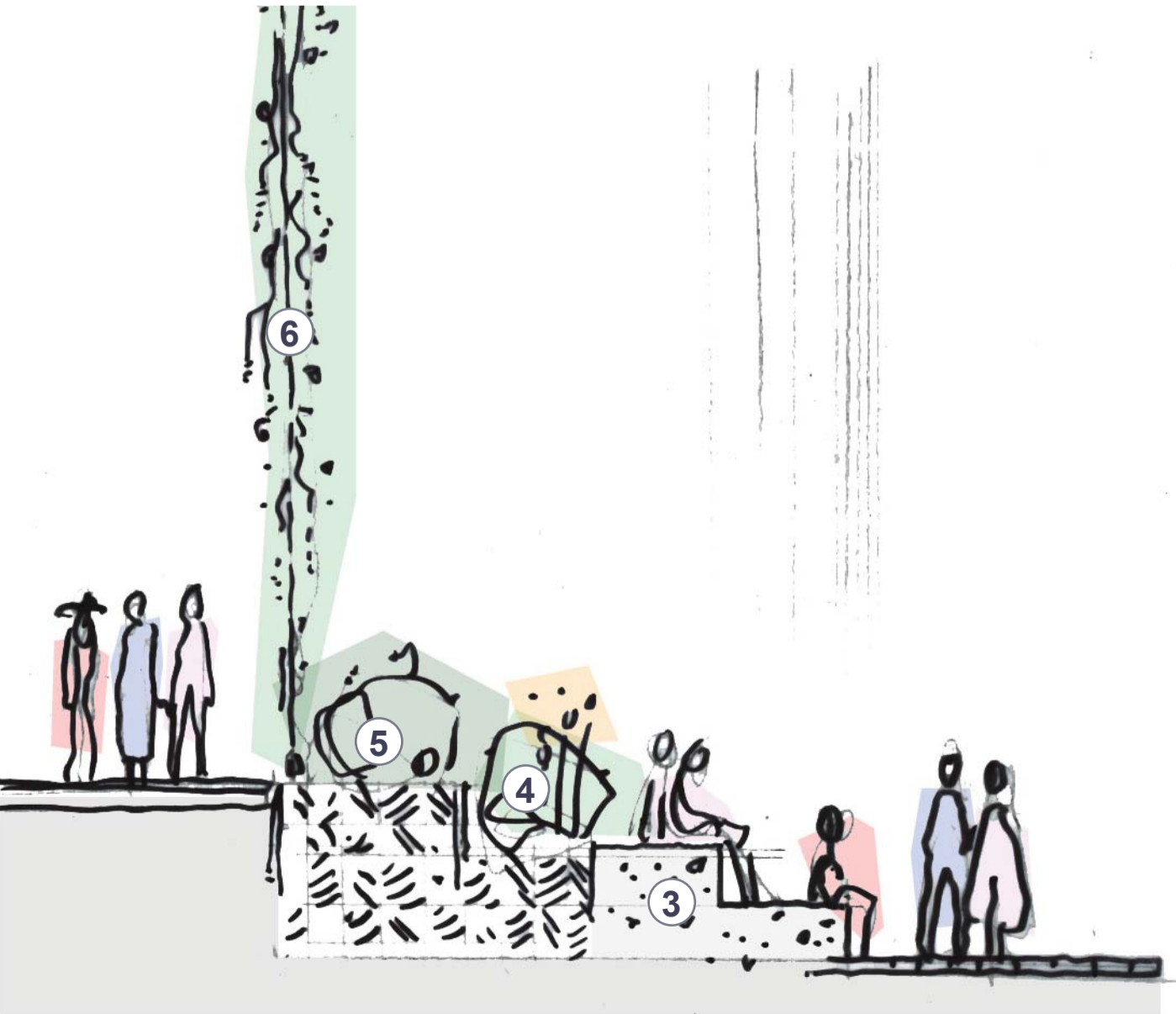
GROUND FLOOR



CORNER ENTRY DETAIL PLAN  
SCALE 1:100 @ A1

NOTES

1. Two tone paving defines entry to the Winx Stand
2. Wide entry stairs
3. Seating block ends to stairs provide informal seating areas
4. Planting and blade walls terrace down in line with seating blocks to the laneway, greening the change in level and providing edges to seating areas
5. Planting areas level with Winx Stand paving
6. Stainless steel cables with native vines extend from garden beds to the roof creating a flowering green curtain
7. Raised garden bed with lush planting and seating wall
8. Lush planting and blade walls create green terraces between the changes in paving level
9. 1m high raised planter creates green edge to path and helps direct pedestrians toward the racetrack.
10. Trailing plants green the wall of the QEII loading dock below
11. Medium sized feature tree provides seasonal interest



**Sturt Noble Associates**

Suite 91, L5, 330 Wattle St  
Ultimo NSW 2007  
T. 02 9211 3744  
W. www.sturnoble.com.au  
landscape architecture  
environmental & urban design

PROJECT  
**ATC WINX STAND, LEGER LAWN**

CLIENT  
**MOSTYN COPPER GROUP**

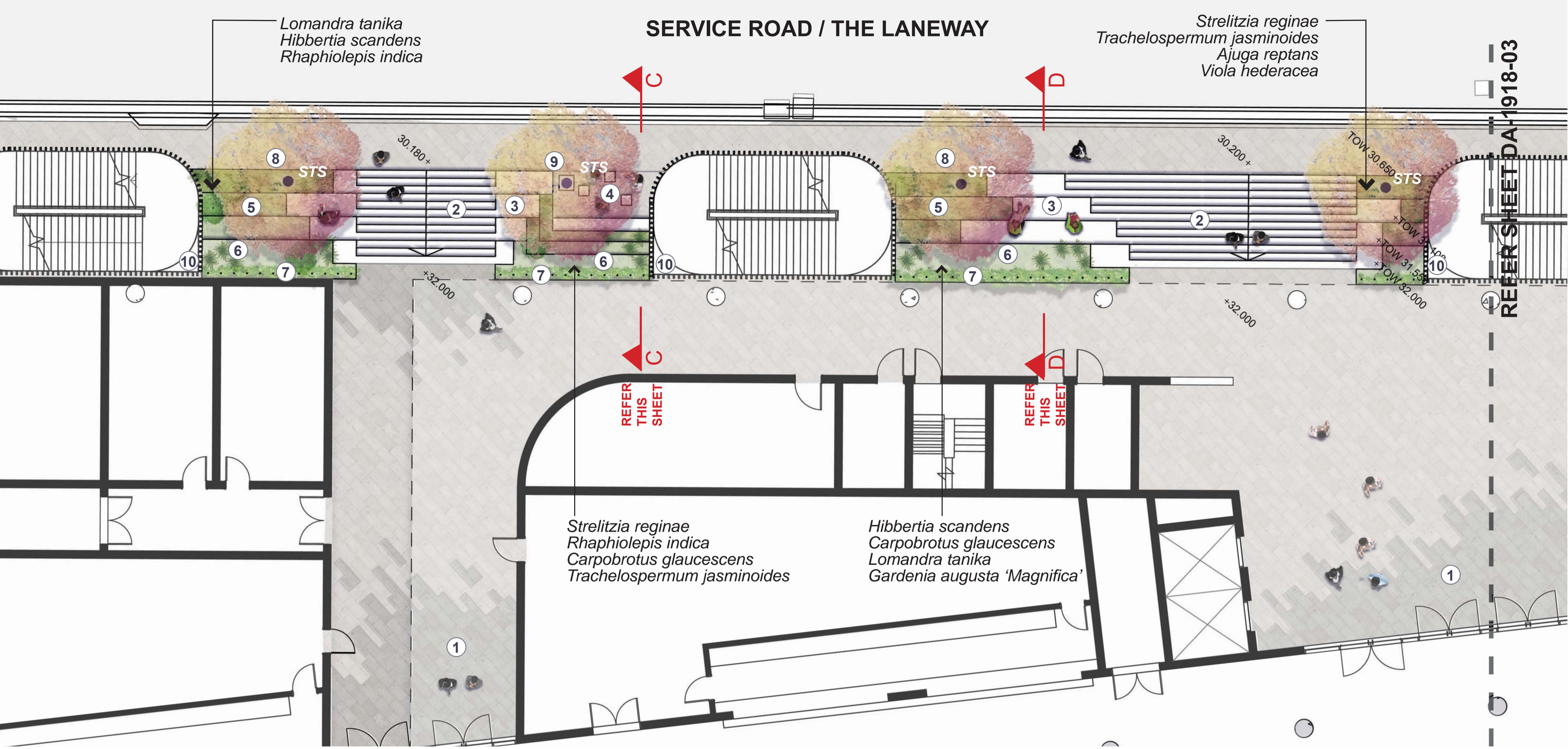
DRAWING  
**GROUND FLOOR CORNER ENTRY**

DRAWING No. **DA-1918-03** ISSUE **D** DRAWN **jw/wl** DATE **30.10.2019**

Scale 0 1 5m  
1:100@A1  
1:200@A3

ACN: 164 245 514 ABN: 99 164 245 514  
THIS DRAWING SHOULD BE READ IN CONJUNCTION WITH ALL RELEVANT  
CONTRACTS, SPECIFICATIONS, REPORTS AND DRAWINGS. COPYRIGHT  
OF THIS DRAWING IS VESTED IN STURT NOBLE ASSOCIATES PTY LTD.

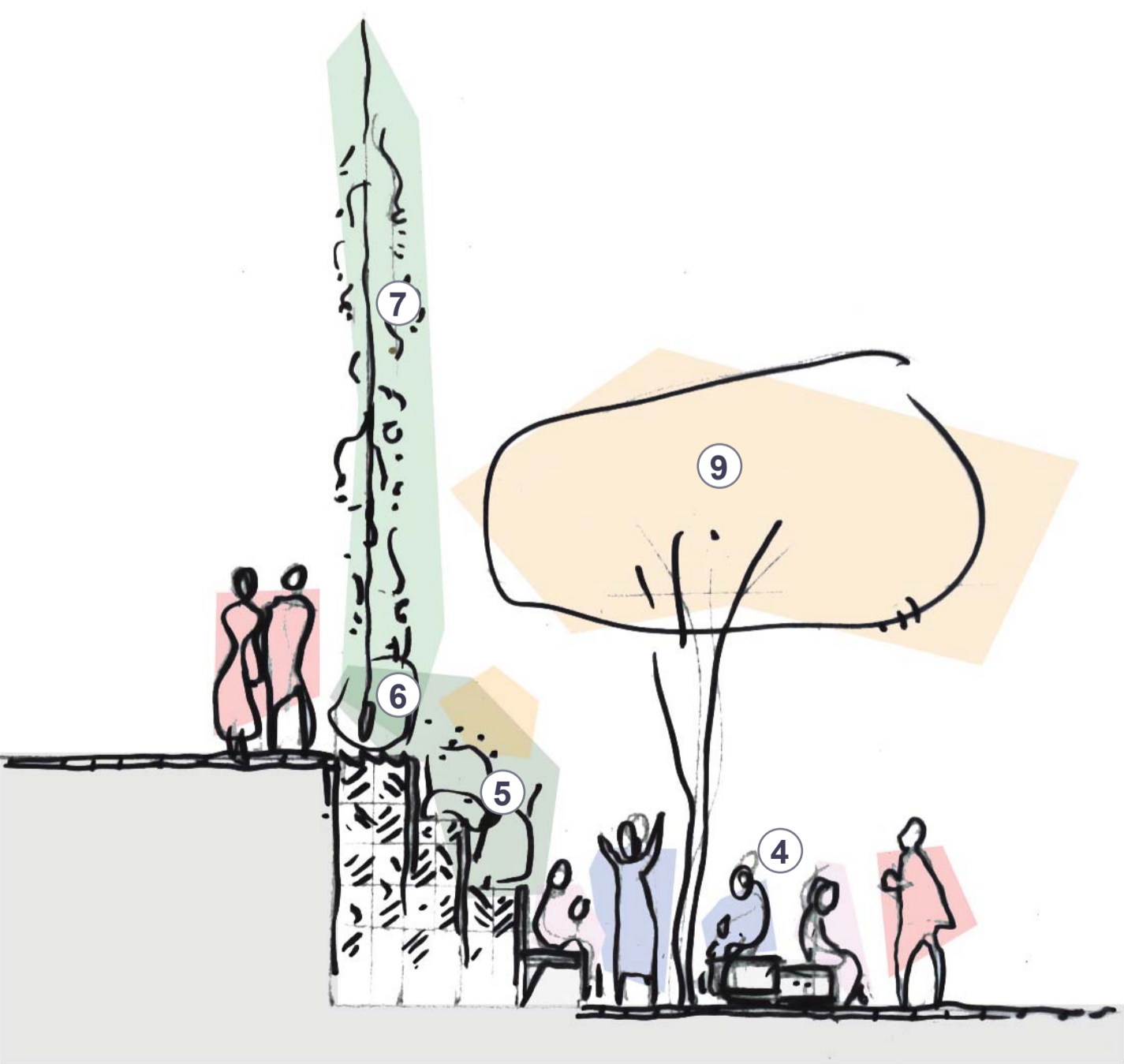
GROUND FLOOR



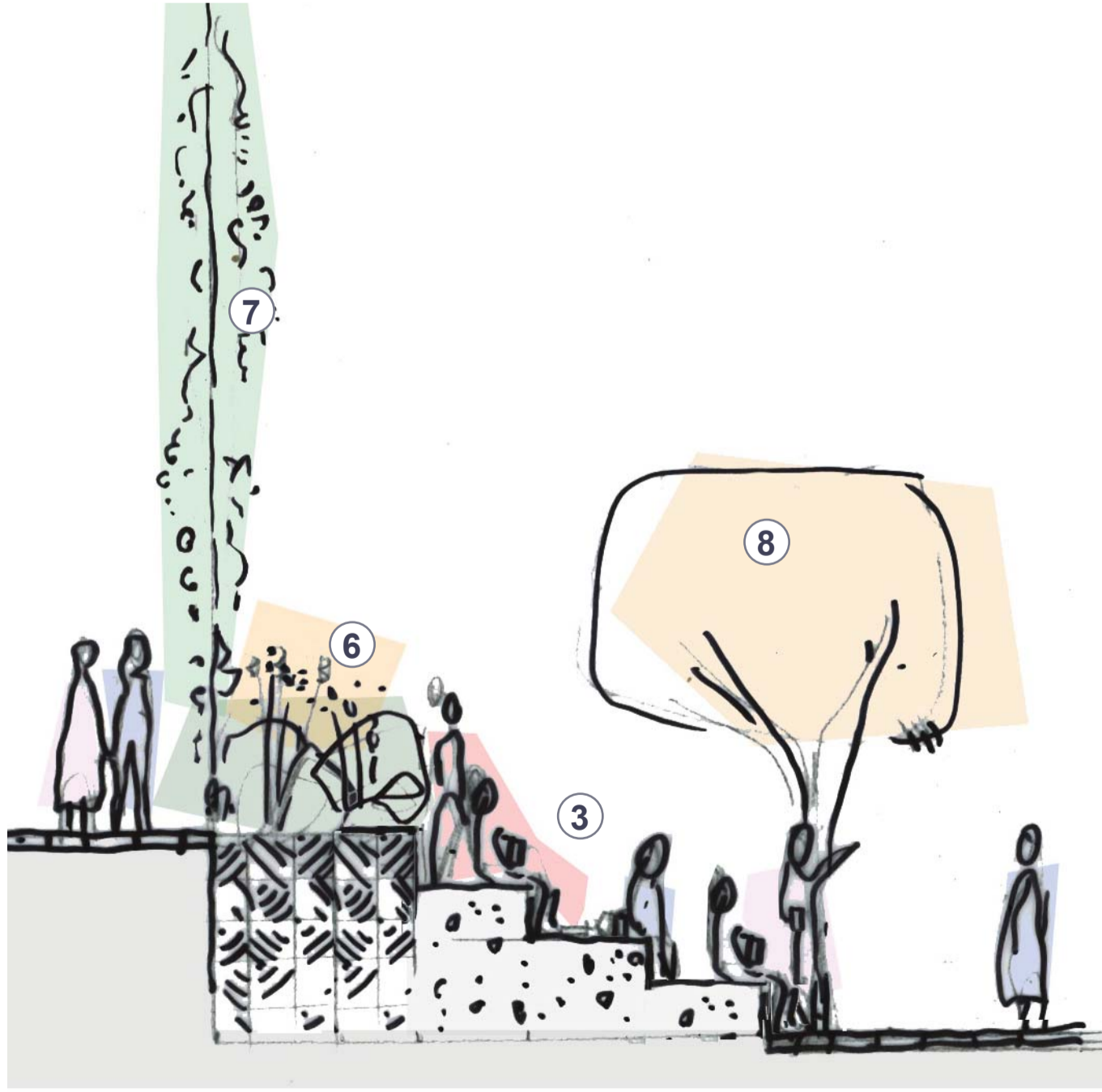
MIDDLE AREA & WESTERN ENTRY  
SCALE 1:100 @ A1

NOTES

1. Two tone paving defines entry to the Winx Stand
2. Wide entry stairs
3. Seating block ends to stairs provide informal seating areas
4. Inset area with 900mm high standing / leaning wall and block seats
5. Planting and blade walls terrace down in line with seating blocks to the laneway, greening the change in level and providing edges to seating areas
6. Planting areas level with Winx Stand paving
7. Stainless steel cables with native vines extend from garden beds to the roof creating a flowering green curtain
8. Medium sized feature tree provides seasonal interest
9. Medium sized feature tree set in tree grate in paved area
10. Runoff from fire stair roof top planters directed into ground area terraced garden beds



SECTION C-C  
SCALE 1:200 @ A1 REFER THIS SHEET



SECTION D-D  
SCALE 1:200 @ A1 REFER THIS SHEET

**Sturt Noble Associates**

Suite 91, L5, 330 Wattle St  
Ultimo NSW 2007  
T. 02 9211 3744  
W. www.sturtnoble.com.au  
landscape architecture  
environmental & urban design

PROJECT  
ATC WINX STAND, LEGER LAWN

CLIENT  
MOSTYN COPPER GROUP

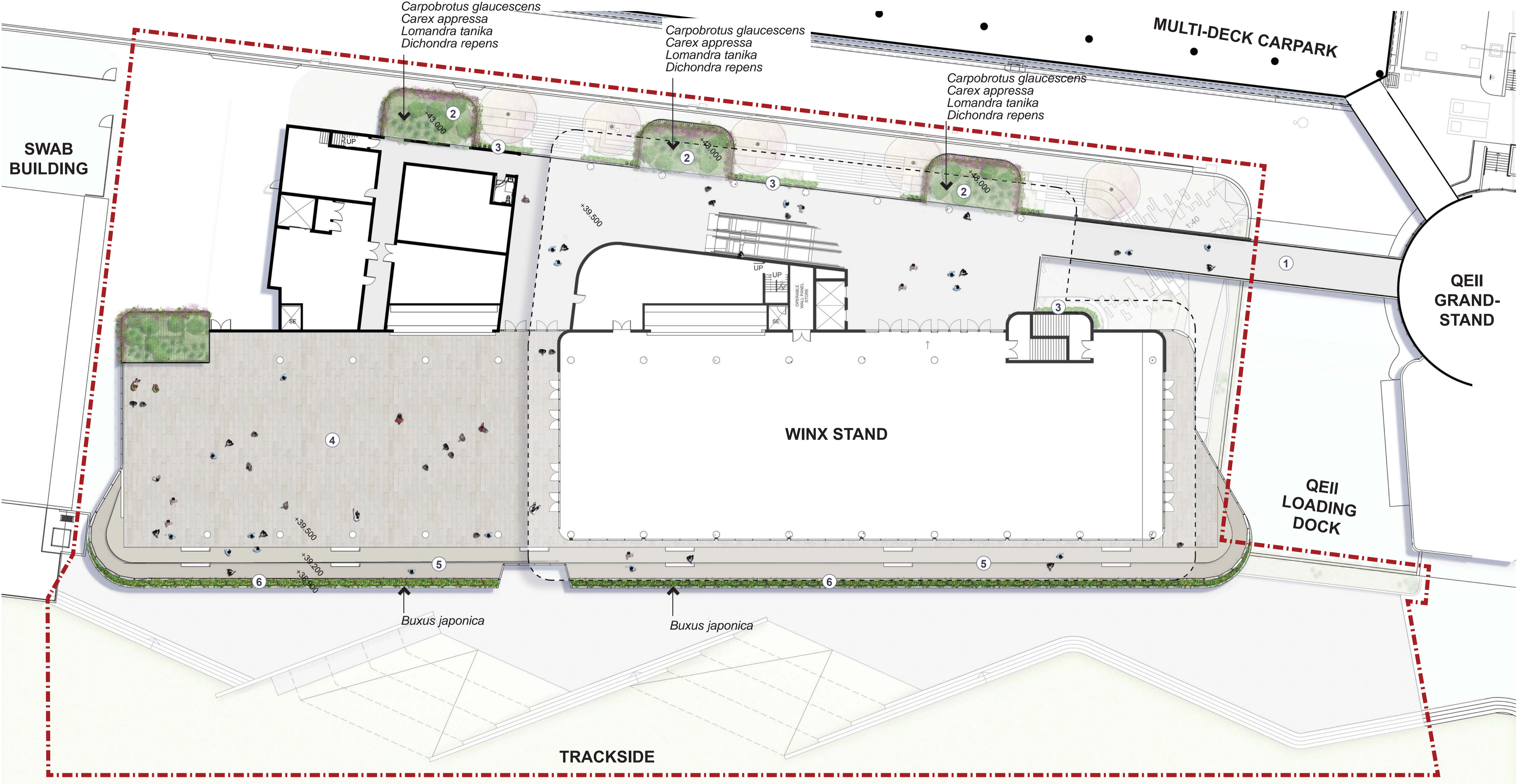
DRAWING  
GROUND FLOOR - MIDDLE AREA AND WESTERN ENTRY

DRAWING No. DA-1918-04 ISSUE D DRAWN jw/wl DATE 30.10.2019

Scale 0 1 5m  
1:100@A1  
1:200@A3

ACN: 164 245 514 ABN: 99 164 245 514  
THIS DRAWING SHOULD BE READ IN CONJUNCTION WITH ALL RELEVANT CONTRACTS, SPECIFICATIONS, REPORTS AND DRAWINGS. COPYRIGHT OF THIS DRAWING IS VESTED IN STURT NOBLE ASSOCIATES PTY LTD.

LEVEL 1 AND ROOF



MASTERPLAN

NOTES

- 1. Pedestrian bridge to QEII Grandstand
- 2. Roof top planting to fire stairs. Trailing plants to cascade over edges
- 3. Stainless steel cables with native vines extend from garden beds to the roof creating a flowering green curtain
- 4. Level 1 terrace
- 5. Stepped edge to level 1 terrace
- 6. Low clipped box hedge to edge of level 1 terrace creates a green edge

LEGEND

- Site Boundary
- +98.000

Suite 91, L5, 330 Wattle St  
Ultimo NSW 2007  
T. 02 9211 3744  
W. [www.sturt-noble.com.au](http://www.sturt-noble.com.au)  
landscape architecture  
environmental & urban design

PROJECT  
**ATC WINX STAND, LEGER LAWN**

CLIENT  
**MOSTYN COPPER GROUP**

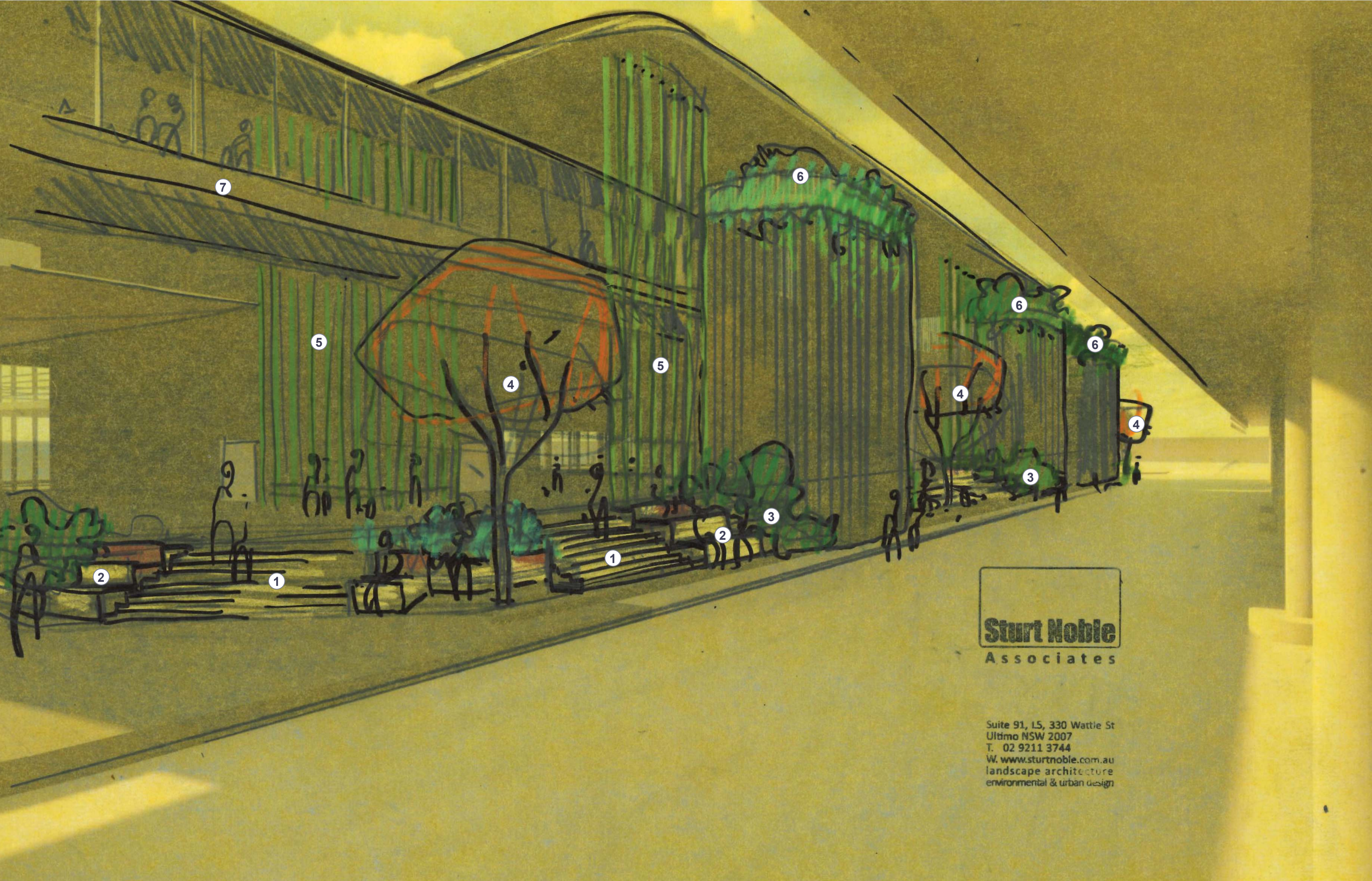
DRAWING  
**LEVEL 1 MASTERPLAN**

DRAWING No.	ISSUE	DRAWN	DATE
DA-1918-05	E	jw/wl	22.01.2020

Scale 0 2 10m  
1:200@A1  
1:400@A3

ACN: 164 245 514      ABN: 99 164 245 514  
THIS DRAWING SHOULD BE READ IN CONJUNCTION WITH ALL RELEVANT  
CONTRACTS, SPECIFICATIONS, REPORTS AND DRAWINGS. COPYRIGHT  
OF THIS DRAWINGS IS VESTED IN STURT NOBLE ASSOCIATES PTY LTD.

SKETCH PERSPECTIVE



LOOKING SOUTH DOWN THE LANEWAY

NOTES

1. Wide entry stairs
2. Seating block ends to stairs provide informal seating areas
3. Planting and blade walls terrace down in line with seating blocks to the laneway, greening the change in level and providing edges to seating areas
4. Medium sized feature tree provides seasonal interest
5. Stainless steel cables with native vines extend from garden beds to the roof creating a flowering green curtain
6. Roof top planting to fire stairs. Trailing plants to cascade over edges
7. Pedestrian bridge to QEII Grandstand



Suite 91, L5, 330 Wattie St  
Ultimo NSW 2007  
T. 02 9211 3744  
W. www.sturt-noble.com.au  
landscape architecture  
environmental & urban design

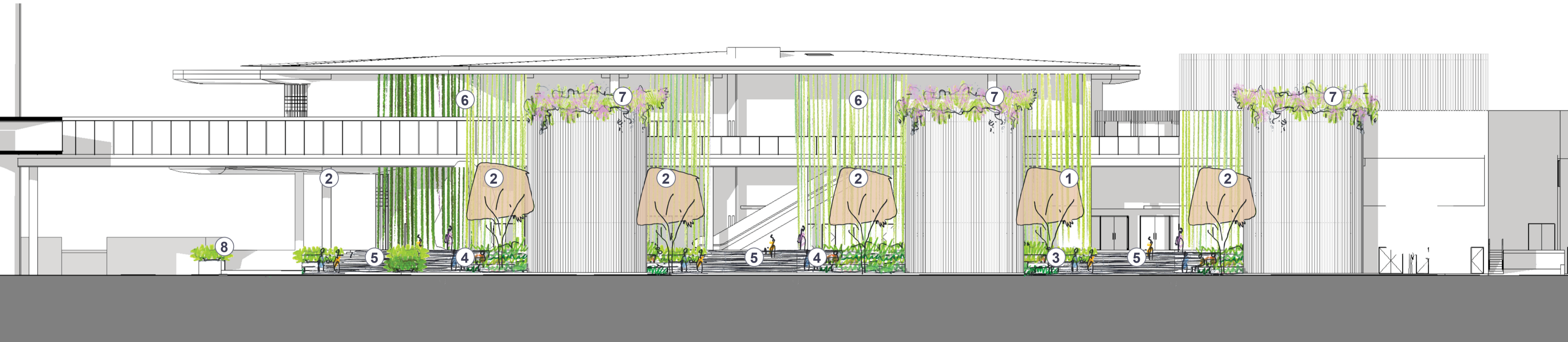
PROJECT  
ATC WINX STAND, LEGER LAWN

CLIENT  
MOSTYN COPPER GROUP

DRAWING  
SKETCH PERSPECTIVE

DRAWING No.	ISSUE	DRAWN	DATE
DA-1918-06	D	jw/wl	30.10.2019

DESIGN ELEVATION



NOTES

1. Medium sized feature tree set in tree grate in paved area
2. Medium sized feature tree set in planting area provides seasonal interest
3. Inset area with 900mm high standing / leaning wall and block seats
4. Seating block ends to stairs provide informal seating areas
5. Wide entry stairs
6. Stainless steel cables with native vines extend from garden beds to the roof creating a flowering green curtain
7. Roof top planting to fire stairs. Trailing plants to cascade over edges
8. 1m high raised planter creates green edge to path and helps direct pedestrians toward the racetrack.

THE LANEWAY ELEVATION



Trailing plants to cascade over edges



Feature tree planting



Planted terraces tie into stairs



Suite 91, L5, 330 Wattle St  
Ultimo NSW 2007  
T. 02 9211 3744  
W. [www.sturtnoble.com.au](http://www.sturtnoble.com.au)  
landscape architecture  
environmental & urban design

PROJECT  
ATC WINX STAND, LEGER LAWN

CLIENT  
MOSTYN COPPER GROUP

DRAWING  
DESIGN ELEVATION

DRAWING No.	ISSUE	DRAWN	DATE
DA-1918-07	D	jw/wl	30.10.2019

0 2 10m  
Scale  
1:200@A1  
1:400@A3

ACN: 164 245 514 ABN: 99 164 245 514  
THIS DRAWING SHOULD BE READ IN CONJUNCTION WITH ALL RELEVANT  
CONTRACTS, SPECIFICATIONS, REPORTS AND DRAWINGS. COPYRIGHT  
OF THIS DRAWINGS IS VESTED IN STURT NOBLE ASSOCIATES PTY LTD.

INDICATIVE PLANTING SCHEDULE

	BOTANICAL NAME	COMMON NAME	POT SIZE	SPACING	HEIGHT & WIDTH
TREES					
STS	<i>Stenocarpus sinuatus</i>	Firewheel Tree	100L	A.S.	15 x 6m
SHRUBS & GROWDCOVERS					
	<i>Ajuga reptans</i>	Blue Bugle	150mm	0.3m	0.2 x 0.4m
	<i>Buxus japonica</i>	Japanese Box	5L	0.5m	1 x 0.5m
	<i>Carex appressa</i>	Tall Sedge	150mm	0.5m	0.8 x 0.7m
	<i>Carpobrotus glaucescens</i>	Pigface	150mm	0.3m	0.2 x 1m
	<i>Dianella caerulea</i> 'Little Jess'	Blue Flax-Lily	150mm	0.6m	0.4 x 0.4m
	<i>Dichondra repens</i>	Kidney Weed	Tube	0.2m	0.2 x 2m
	<i>Gardenia augusta</i> 'Magnifica'	Gardenia	5L	0.6m	1 x 0.5m
	<i>Hibbertia scandens</i>	Guinea flower	150mm	0.3m	4 x 1m
	<i>Liriope muscari</i> 'Evergreen Giant'	Liriope Evergreen Giant	150mm	0.5m	0.6 x 0.5m
	<i>Lomandra longifolia</i> 'Tanika'	Lomandra Tanika	150mm	0.5m	0.6 x 0.65m
	<i>Raphiolepis indica</i> 'Spingtime'	Indian Hawthorn	5L	0.7m	2 x 3m
	<i>Rosa noatraum</i> 'Carpet Rose'	Carpet Rose	5L	0.7m	0.9 x 0.9m
	<i>Strelitzia reginae</i>	Bird of Paradise	25L	0.6m	1.5 x 1.5m
	<i>Trachelospermum jasminoides</i>	Star Jasmine	5L	0.5m	0.6 x 1m
	<i>Viola hederacea</i>	Native Violet	Tube	0.2m	0.13 x 1m

PLANTING



Hibbertia scandens



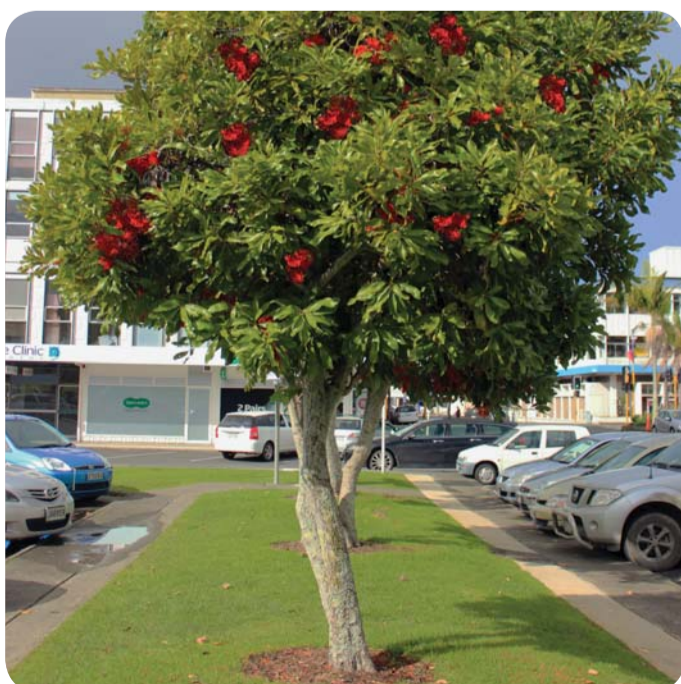
Trachelospermum jasminoides



Dichondra repens



Carpobrotus glaucescens



Stenocarpus sinuatus



Lomandra longifolia 'Tanika'



Viola hederacea



Dianella caerulea 'Little Jess'



Ajuga reptans



Gardenia augusta 'Magnifica'

PRECEDENT IMAGES



Two-tone paving



Seating steps



Terraced steps



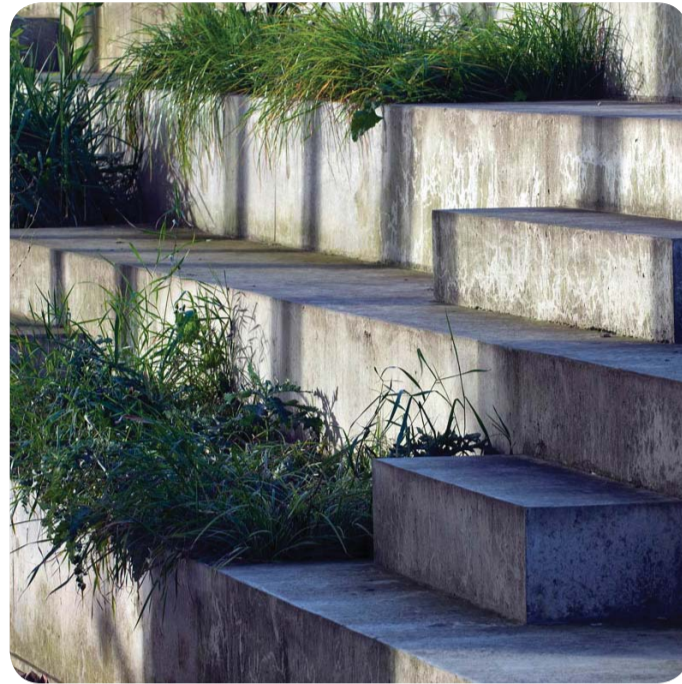
Layered planting



Concrete seating wall



Planting terraces



Planting and seating steps



Native vines to steel cables



Green roof to fire stairs



Raised concrete planter

Sturt Noble

Associates

PROJECT

ATC WINX STAND, LEGER LAWN

CLIENT

MOSTYN COPPER GROUP

DRAWING

INDICATIVE PLANTING SCHEDULE

DRAWING No.

DA-1918-08

ISSUE

E

DRAWN

jw/wl

DATE

22.01.2020

Suite 91, L5, 330 Wattle St  
Ultimo NSW 2007  
T. 02 9211 3744  
W. [www.sturnoble.com.au](http://www.sturnoble.com.au)  
landscape architecture  
environmental & urban design