



EnergyAustralia

LIGHT THE WAY

Marulan Gas Fired Power Stations Project

Submissions Report

Date Issued: 14 February 2020

Document Version: 3

Table of Contents

- 1 Introduction 3**
 - 1.1 BACKGROUND 3
 - 1.2 PROJECT OVERVIEW 3
 - 1.3 JUSTIFICATION AND STRATEGIC CONTEXT 5
 - 1.4 IMPLICATIONS OF THE PROJECT APPROVALS LAPSING..... 6

- 2 Consultation and exhibition 7**
 - 2.1 FUTURE CONSULTATION 7
 - 2.2 COMMUNITY RELATIONS LEAD..... 7

- 3 Purpose of this Submissions Report 9**
 - 3.1 SUMMARY OF SUBMISSIONS 9
 - 3.2 LOCATION OF SUBMITTERS 10
 - 3.3 OVERVIEW OF ISSUES RAISED 10

- 4 Response to Submissons12**
 - 4.1 PUBLIC AUTHORITY SUBMISSIONS 12
 - 4.2 STATUTORY PLANNING 13
 - 4.3 CONSULTATION AND EXHIBITION 14
 - 4.4 CHOSEN TECHNOLOGY 14
 - 4.5 AIR QUALITY AND GREENHOUSE GAS EMISSIONS 15
 - 4.6 CONTAMINATION AND WATER USAGE..... 16
 - 4.7 BIODIVERSITY AND LAND MANAGEMENT 17
 - 4.8 VISUAL, SOCIO-ECONOMIC AND LAND USE 17
 - 4.9 NOISE AND VIBRATION 19
 - 4.10 TRAFFIC AND TRANSPORT..... 19

- 5 Conclusion.....20**

- Appendix A – Submissions List.....21**

1 INTRODUCTION

Background

EnergyAustralia's (the Proponent) Marulan Power Stations Project (the Project) was planned and approved as two independent gas-fired power stations utilising shared infrastructure. The Project was granted Project Approval by the then Minister for Planning, The Hon. Kristina Keneally MP, on the 26 October 2009 and comprised of three Project Approvals:

- MP07_0174–Shared Common Infrastructure
- MP07_0175–Delta Gas-Fired Power Station and Associated Infrastructure
- MP7_0176–EnergyAustralia Gas-Fired Power Station and Associated Infrastructure.

The Project transitioned to critical State significant infrastructure (CSSI) in 2011 under Division 5.2 of the Environmental Planning and Assessment Act 1979.

The lapse date for all Project Approvals was on the 26 October 2019. The Proponent lodged a modification application with the Department of Planning, Industry and Environment (DPIE) on the 11th October 2019 seeking to modify Condition of Approval 1.5 of the Project Approvals 07_0174, 07_0175 and 07_0176, to extend the lapse date by five (5) years. No other changes were proposed to the existing Project Approvals as part of the modification application. Consequently, it will not result in any additional impacts that have not already been considered and assessed in the original Project Approvals.

The modification application was publicly exhibited for 14 days by DPIE. During and following the public exhibition period, submissions were received from the community and from public authorities. This Report has been prepared to respond to those submissions.

1.2 Project Overview

The Project would be located on Canyonleigh Road, Brayton, approximately 12 kilometres northeast of the village of Marulan. The Project site forms part of Lot 18 DP1056592. At the time of Project Approval, Delta Electricity and EnergyAustralia were to become the registered proprietors of the land on which their respective facilities would be located. Following Project Approval, EnergyAustralia acquired the land and all three Project Approvals.

The Marulan site was selected for the Project owing to the strategic location close to existing gas and electrical infrastructure and the availability of the land for purchase. The Project is located adjacent to TransGrid Marulan 330/132kV Substation, allowing the output to be easily and efficiently directed to the major energy load centres in NSW, without the need to provide for considerable strengthening of existing or investment in new transmission networks.

Key features of the Project as approved include:

EnergyAustralia Gas Turbine Power Facility (Power Station 1) – (MP 07_0176)

- Two gas turbine generators together with associated ancillary equipment and water, fuel and control systems
- Roads, drainage and a workshop, control and administration facilities
- External infrastructure connections associated with electricity import and export, gas supply, road access and telecommunications.

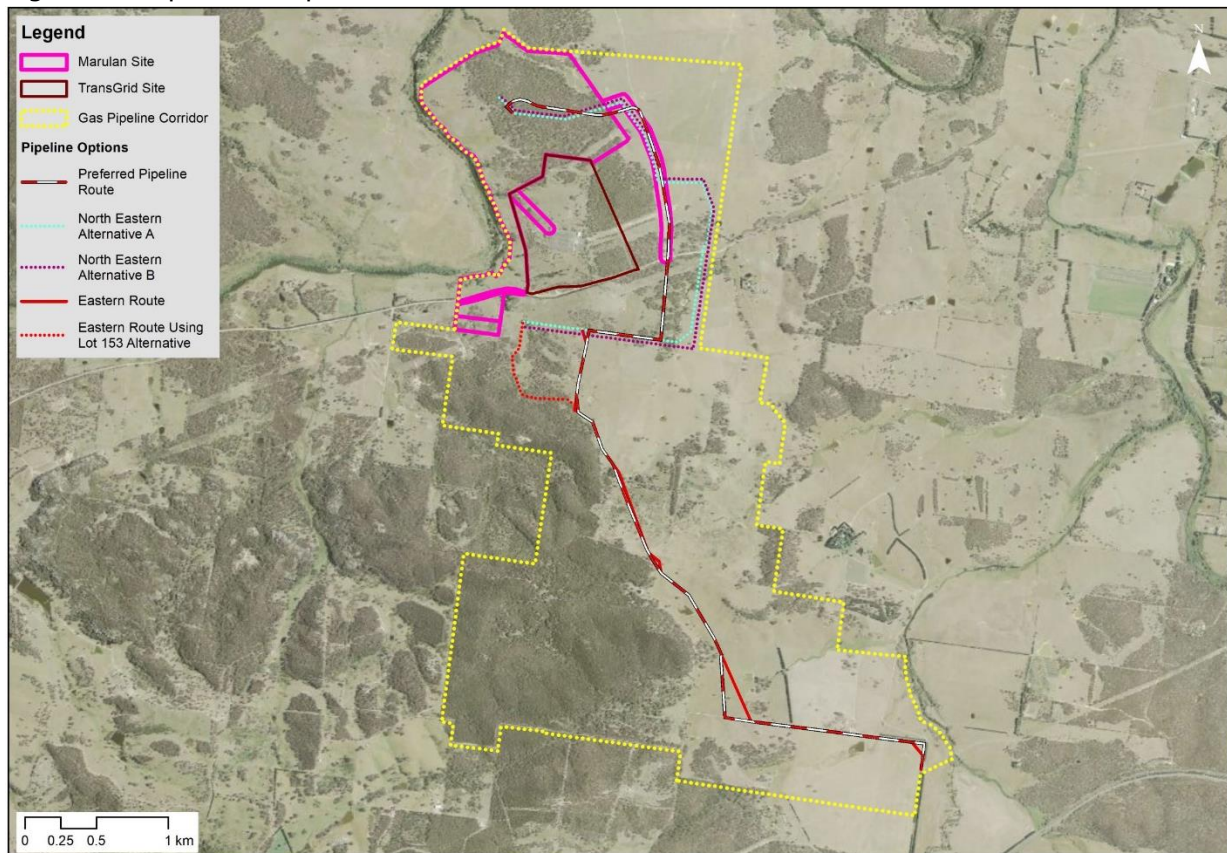
Delta Electricity Gas Turbine Power Facility (Power Station 2) – (MP 07_1075)

- Gas turbine facility including ancillary equipment, process control system, administration facilities implemented in two stages:
 - Stage 1 – Two open cycle gas turbines with a total combined capacity in the range of 250-350 MW
 - Stage 2 – Conversion to combined cycle facility to generate electricity for intermediate/base load electricity demand
- Associated infrastructure within the lot i.e. connection to the electricity transmission line, connection to the gas inlet receiver, internal roads and water storage.

Common Infrastructure Area – (MP 07_0174)

- The Project would include the development of joint infrastructure for the proposed power stations including:
 - A transmission line between the facilities and the adjacent TransGrid switchyard
 - A site access between the facilities site and University Road
 - A gas pipeline route (to be determined) within the assessed gas pipeline corridor.

Figure 1 Proposal Footprint



1.3 Justification and strategic context

If approved, this modification application will provide EnergyAustralia an opportunity to consider a range of potential options to develop the site (including incorporating renewables and battery storage) and move to a new way of strategically thinking and planning to meet NSW's future energy needs.

As large thermal generation is scheduled to retire, extending the Project Approvals lapse dates will retain a readily developable site and provide greater energy security in NSW and complement increasing renewable energy deployment over the coming decades. Given the rapidly transforming National Electricity Market (NEM), EnergyAustralia believes the Project is very important to household, business and industrial energy consumers in NSW.

Since the Project Approvals in 2009, AGL have publicly announced the retirement of Liddell coal fired power station with 1 unit closing down in 2022 and the remainder in April 2023 with a loss of 2000 MW of dispatchable NSW electricity supply. The Australian Energy Market Operator (AEMO) is forecasting a reliability gap supply shortfall in NSW post the Liddell closure. Given the evolving market dynamics, EnergyAustralia believes there will likely be enough demand for new gas generation to justify the development of the Marulan Project in the next five years.

To ensure electricity supply is available to the NEM grid, EnergyAustralia is currently progressing the Tallawarra B Project. The Tallawarra B Project will help to address this reliability gap shortfall. However, there would remain residual risk of supply shortfalls for NSW.

The proposed Snowy 2.0 project would likely help to meet the supply shortfall if it is operational as planned in 2025. There remains significant technical, timeline and financial risk around this project ahead of the completion of exploratory works, which are expected to take between 18 and 34 months to complete. Extending the lapse dates of the Project Approvals would help to de-risk the state of NSW against any potential delays or abandonment of the Snowy 2.0 project.

Should the Project Approvals lapse, development of the Project would be stopped. A new project assessment and approval process would be lengthy and increase project uncertainty. Should the Snowy 2.0 project be delayed, energy supply could be threatened, if the demand is unable to be fulfilled by new generation development sites.

The Project provides for a readily investable power generation site that can be developed within a relatively short lead in time. The Project supports ongoing secure, economic electricity supply during a period of energy uncertainty. Extending the Project Approvals lapse dates would enable EnergyAustralia to undertake further strategic planning, stakeholder consultation, environmental investigations and options analysis for the Project.

1.4 Implications of the Project Approvals lapsing

If the Project Approvals lapse, potential consequences are likely to include:

- Loss of a readily developable electricity generation site
- Delays in Project delivery or non-delivery, potentially contributing to an anticipated shortfall in NSW electricity generation, with consequences such as increased NEM prices and insufficient or interrupted electricity supply for NSW residents, businesses and the community
- Decreased security of electricity supply during peak demand periods and during system emergencies
- A slower transition to a low emissions market as gas-fired facilities would take longer to come online
- Increased social and economic impacts associated with undermining the ability of the NSW electricity supply network to meet peak energy demands in the short term and base load demands in the medium term
- A decrease in the number of readily available sites that EnergyAustralia has in hand and can develop in response to changes or risks that may stall the delivery of other energy generation assets, such as Snowy 2.0
- The community benefits of the Project identified in the EIS documentation, such as upgrades to local road and wastewater infrastructure would not be realised.

2 CONSULTATION AND EXHIBITION

Extensive consultation activities with the community, local landholders, Councils and regulatory bodies have been undertaken prior to and during the environmental assessment in 2008/2009.

Recent consultation activities were carried out prior to and during the exhibition period to provide the community and stakeholders with information regarding the proposed modification application. These activities included:

- Meetings with Goulburn Mulwaree and Upper Lachlan Shire Councils were undertaken in July 2019.
- An information letter, dated 4 September 2019, was sent to affected stakeholders and landholders.
- An advertisement for the public exhibition of the modification application was posted in the Goulburn Post on 25 October 2019.

The modification application was publicly exhibited and made available for download for 14 days between 30 October 2019 and 13 November 2019 on the NSW Government DPIE Planning Portal Major Projects website.

2.1 Future Consultation

Should the modification application be approved, EnergyAustralia is committed to engaging with the community and stakeholders, ensuring they are kept informed about the Project and any future development.

Further consultation will be undertaken with the community and stakeholders following the modification application determination in early 2020.

2.2 Community Relations Lead

Community engagement plays a vital role in enabling EnergyAustralia to share information about its operations and seek the views and opinions of its stakeholders on how it conducts its business.

EnergyAustralia has appointed a dedicated Community Relations Lead (CRL) located at Tallawarra Power Station who will also manage the community and stakeholder engagement of the Project.

The CRL is committed to open and honest communication with stakeholders. Respect and consideration for the community and stakeholders is EnergyAustralia's priority for all aspects of its operations.

The CRL is committed to:

- Engaging stakeholders early in the process
- Ensuring stakeholders have easy access to information
- Responding to all stakeholder contact in a timely manner

- Being sensitive to the needs of the community
- Honouring commitments made by the project team
- Making every effort to minimise the impact of work on the local community.
- Being consistent in word and action
- Collaborating with stakeholders
- Engage stakeholders affected by EnergyAustralia's activities in an effective and meaningful way
- Ensuring stakeholders are satisfied they have had the opportunity to provide information on activities on their property (where applicable) that may impact the project or their property
- EnergyAustralia's CRL will make sure best practice standards for stakeholder engagement across day to day activities of Tallawarra Power station and any proposed future projects.

3 PURPOSE OF THIS SUBMISSIONS REPORT

This Report comprises the Submissions Report for the proposal. It has been prepared in accordance with the requirements for State significant infrastructure under Part 5.1 and, more specifically, cl 5.17(6)(a) of the EP&A Act.

This Report has been prepared in response to a request by DPIE in a letter dated 21st November 2019. This Report provides responses to each matter raised during the public exhibition period of the modification application.

3.1 Summary of submissions

A total of 150 individual submissions were received during the public exhibition period across the three Project Approvals. The submissions were provided to EnergyAustralia by the DPIE for consideration after the conclusion of the exhibition period. The distribution of the submissions received is show in Table 1 below:

Table 1: Summary of Submissions Received

Submitter Type	MP07_0174	MP07_0175	MP07_0176	Total Submissions
Public Authority	3	3	3	9
Community	59	41	40	140
Organisation	1	0	0	1
Total	63	44	43	150

As the modification application is sought for all of the three Project Approvals, submissions could be submitted under each or all of the three original Project Approvals via the NSW DPIE Planning Portal Major Projects website. Therefore, numerous submissions are duplicates across each of the three Project Approvals.

Where identifiable, duplicate submissions under each of the Project Approvals have been collated into a single identification number (refer to Appendix A). Although numerous submissions within each of the three Project Approvals were similar or identical, these were not collated as they were submitted by different individuals from different locations. This method both reflects the total number of individual submissions yet assesses them relative to the Project as a whole.

Of the submissions received under each of the three Project Approvals, 56 were duplicates, thus there are 94 collated submissions. Of the collated submissions received:

- Three submissions were received from public authorities, categorised as comments.
- One submission was received from an organisation, which objected to the Project.
- Ninety submissions were received from the public, all of which objected to the Project.

3.2 Location of submitters

Twenty three percent of submitters were located within the adjacent localities of the Project namely Brayton and Marulan. It should be noted that the stated location of the submitters may not necessarily reflect the location of the issue being raised. For example, one submitter was located in Sydney, however directly raised concerns about their property located nearby the Project site.

A summary of the locations of submitters locations is provided in Table 22.

Table 2: Summary of submissions by submitter location

Submitter locations	Approximate distances from the Project	Number of unique submissions
In close proximity to the Project, in the localities including Brayton and Marulan	8 – 12 km	17
Other locations within the Upper Lachlan Shire and Goulburn Mulwaree Local Government Areas, excluding Brayton and Marulan	25 – 70 km	18
The greater Sydney Region	100 – 150 km	40
Remaining locations in NSW	70 – 550 km	14
Locations in QLD	850 km	4
Submissions with no location provided	N/A	1

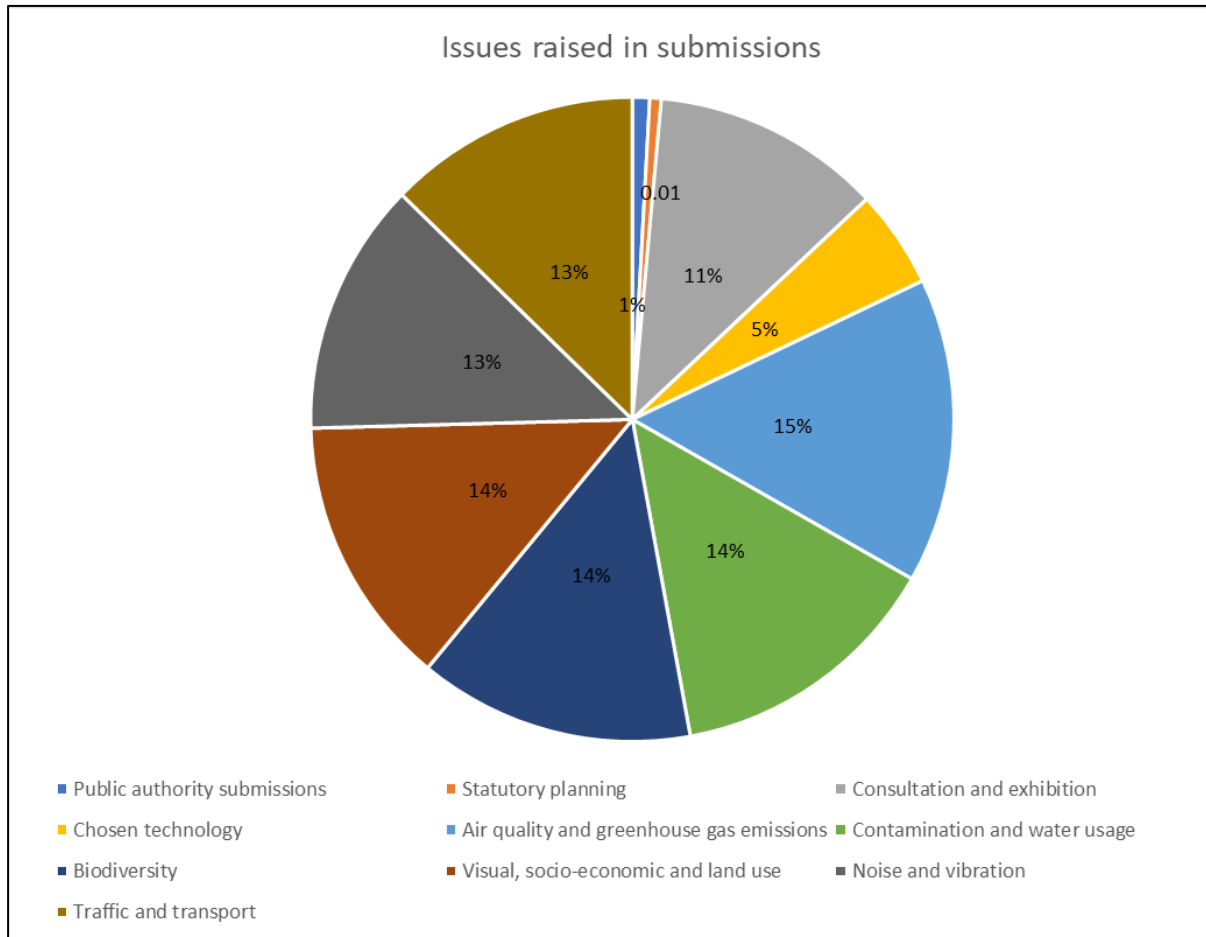
3.3 Overview of issues raised

Each submission has been examined individually. The issues raised in each submission have been analysed and responses have been prepared. Where similar issues have been raised in different submissions, a consolidated response to the issue has been prepared.

The key issues raised in the submissions were broadly regarding:

- Adequacy of community consultation and access to information through the NSW DPIE Planning Portal website.
- The appropriateness of chosen electricity generation technology.
- The reduction of the quiet rural atmosphere and green space in the rural landscape.
- Impacts to air quality and the emissions of greenhouse gasses.
- Impact on climate change
- Contamination of soil and waterways.
- Impacts to local wildlife.
- Increases in noise and traffic volumes.

A breakdown of the issues raised is shown in Figure 2 below.



4 RESPONSE TO SUBMISSIONS

EnergyAustralia's response to the submissions received are outlined in the following sections. Section 4.1 addresses the submissions received from public authorities. Community submissions are addressed in the relevant categories from Section 2.2 to 2.10. Appendix A refers to the section in which each of the submissions have been addressed.

4.1 Public authority submissions

Issue description

Goulburn Mulwaree Council supports the modification application. Goulburn Mulwaree Council requested a referral be made to Upper Lachlan Shire Council.

WaterNSW has no objection to the modification application. WaterNSW has requested to remain a stakeholder for the Project and be notified when the modification application is determined. WaterNSW has also requested to be updated on relevant future construction and environmental management plans. This is due to the proximity of the Project to the Wollondilly River and the approval requirement that wastewater from the Project is to be contained in structures with the same permeability as a landfill to prevent leaching.

NSW EPAs submission provided details on relevant updated environmental legislation and guidelines since the Project was approved in 2009. NSW EPA has recommended further early engagement to ensure the Project design, development and operation will incorporate and apply present day best practice standards, controls, management and mitigation measures and meet relevant legislative and policy requirements.

Response

Goulburn Mulwaree Council support of the Project is noted. EnergyAustralia has undertaken consultation with Upper Lachlan Shire Council including an information letter dated 4 September 2019 and a meeting in July 2019.

EnergyAustralia will continue to consult with WaterNSW during future Project development and will notify WaterNSW once the modification application has been determined.

It is noted that some environmental legislation and guidelines have been updated, including the *Clean Air Regulation 2010* and the *Noisy Policy for Industry 2017*. During future project development, EnergyAustralia would consult with the NSW EPA to consider appropriate measures to meet legislative and policy requirements.

4.2 Statutory Planning

Issue description

The modification application did not include an environmental assessment of the natural and built environment, as well as the social and economic impact as required under the EP&A Act.

The Project has had the opportunity to go ahead for a decade and has not progressed. The proponent should be required to submit a totally new development application.

Response

The Environmental Impact Assessment for the Project was prepared in 2008. These documents were prepared in accordance with the EP&A Act and considered the environmental, social and economic impacts of the Project. The social and economic impacts were assessed in Chapters 7 to 18 of the Environmental Assessment.

As the modification application seeks to extend the time frame for the development and does not seek to change any other aspect of the Project, the modification application would not result in any change to the impacts already assessed in the 2008 Environmental Impact Assessment, and thus did not require additional environmental assessment.

The progression of the Project has been influenced by the fluctuations in energy demand over the past decade. Since the three Project Approvals were granted in 2009, there has been two genuine attempts at development of the Project. The first in 2011/12 involved tender processes for either a four-unit E Frame or a three-unit F frame station. At this time, EnergyAustralia and their suppliers invested substantial capital to develop a workable concept layout for the site at considerable expense to EnergyAustralia.

Additionally, constructive stakeholder consultation with the community, landholders, local shires and regulatory bodies was undertaken to move the Project toward physical commencement. Unfortunately, there was a significant shift in outlook for the energy market with a forecast reduction in demand for energy and consequential surplus supply curtailing further investment.

With the return of energy demand in 2013, EnergyAustralia again attempted to commence the Project in unison with the development of the Tallawarra B power station project. Investigations were carried out to understand the optimal equipment for the site and its layout. Some of the earlier work was used to develop the site concept but it became obvious that an F Frame project was preferred over an E Frame. Given the very high cost to physically commence work on the Project at this point a decision was made to further delay investment.

However, given the evolving market dynamics, EnergyAustralia considers there is likely to be enough demand for new gas generation to justify the development of the Marulan Project in the next five years.

4.3 Consultation and exhibition

Issue description

Finding the modification application page on the NSW Planning Portal Major Projects website was difficult and the process to make a submission was complicated.

There was an inadequate time period to make submissions.

There was inadequate community consultation and advertising of the modification application.

Communication from EnergyAustralia has been misleading in nature, including images of renewables, and stating their intention to investigate various greener alternatives.

Response

The NSW Government DPIE Major Project Planning Portal website is managed by the Department of Planning, Industry and Environment. The modification application portal page was available via consistent methods such as search functions that are applicable to all current SSI projects and modification applications.

The modification application was publicly exhibited for 14 days by DPIE. This is in accordance with the SSI modification requirements described in Clause 241 of the *Environmental Planning and Assessment Regulation 2000* (EP&A regulation). As stated in the proposed modification application, the Project will remain the same development as originally approved. It would not involve additional infrastructure or alteration to proposed construction methodologies. Given the above, the two week exhibition period was considered to be adequate by DPIE.

Consultation activities were undertaken prior to the 14 day exhibition period. EnergyAustralia placed an advertisement in the Goulbourn Post on 25 October 2019. Additional consultation included a notification letter sent to affected stakeholders and landholders and meetings with Goulburn Mulwaree and Upper Lachlan Shire Councils (refer to Section 2 above).

The modification application does not contain images of renewable energy technologies. The modification application seeks to extend the lapse date of the Project Approvals only.

4.4 Chosen technology

Issue description

The chosen technology would be obsolete in five years' time. The viability and cost/benefit trade-offs of fossil fuel-based technologies are no longer acceptable.

Renewable energy and storage solutions should be chosen over thermal power options.

The technology at similar plants is unreliable and frequently breakdown during heatwaves in Summer.

Response

Gas-fired generation has an important role to play in a new, modern energy system and complements the ever-increasing renewable energy deployment over the coming decades.

The Project could respond quickly to fluctuations in electricity supply and demand, providing security in supply for large numbers of households and businesses across the state, and nationally.

The Project would assist in addressing the reliability gap shortfall during the transition to a clean energy future. Whilst renewables provide low cost energy, 'firming' capacity is still required to maintain system security when renewables are not generating (i.e. dark hours, still hours or other intermittencies).

The two main options for firming capacity are gas fired generation and pumped hydro. Whilst pumped hydro projects may provide credible long-term supply options for NSW, these projects have long lead-in times and high development risks. Maintaining options for more modular gas fired generation with shorter lead times is therefore important to preserving ongoing supply security for NSW during a period of unprecedented energy uncertainty.

EnergyAustralia commits to investigate inclusion of alternate technologies such as battery storage in any future development of the site.

The Project would increase and improve energy supply potential in times of peak energy demand and assist in the uptake of a reliable supply of renewable energy. Any future development of the Project would investigate the most relevant and modern turbine technology to ensure reliability.

4.5 Air quality and greenhouse gas emissions

Issue description

The Project would reduce the air quality affecting nearby properties including wine and olive growing regions downwind of the Project.

The burning of fossil fuels would result in the emissions of greenhouse gases which would contribute to climate change.

Response

The 2008 Environmental Impact Assessment evaluated air quality including greenhouse gas emissions in Chapter 7. The modification application seeks to extend the time frame for the development and would not result in any additional air quality impacts not already assessed in the 2008 Environmental Impact Assessment.

The results of the dispersion modelling predicted the potential impacts of emissions on air quality based on the Project operating all hours of the year. The approach taken was conservative to assess the likely impacts under the worst case operating and atmospheric conditions. No exceedances of the regulatory criteria were calculated. It is considered that

the potential impacts on air quality from the Project would be minor, with adverse impacts unlikely.

The Project currently remains one of the most credible sources of new gas fired generation to help NSW transition from an electricity system dominated by coal generation to a high renewables / low emission future state system. Overall, the Project would facilitate the transition to a clean energy future.

4.6 Contamination and water usage

Issue description

The Project has the potential to contaminate rainwater, which residents collect for drinking, and the Wollondilly River, which feeds Sydney's water supply.

The unconfirmed use of 52.5 ML of water from the Highlands Source Water Pipeline which was intended to be used as an emergency water source for Goulburn in times of drought.

Response

The 2008 Environmental Impact Assessment evaluated contamination and water cycle management in Chapters 9 and 14. The modification application seeks to extend the time frame for the development and would not result in any additional contamination or water usage impacts not already assessed in the 2008 Environmental Impact Assessment.

WaterNSW provided comment on the modification application and has no additional objections or concerns regarding the location within the Sydney Catchment Area.

Stormwater and wastewater would be designed and maintained to the highest standards and to be effectively self-contained. The Project would be designed and operated to avoid contamination of Wollondilly River. Areas where there is a higher likelihood for spills or leaks occurring would be bunded and water directed into drains for capturing water for treatment or disposal. There would be no direct drainage of water into the Wollondilly River other than natural flows. Water management strategies would be developed and implemented in relevant construction and operational management plans.

In the 2008 Environmental Impact Assessment, a 'Neutral or Beneficial Effects Test' was undertaken to assess the potential impacts on water quality. WaterNSW (then the Sydney Catchment Authority) was satisfied with the assessment and has no objections on the modification application.

The 2008 Environmental Impact Assessment evaluated water supply options and water usage in Chapter 14. The Project would be designed to minimise water consumption. Water usage would be managed in accordance to all relevant NSW legislation and policies.

The Project is expected to use treated effluent from offsite sources and rainwater be captured from the hardstand areas for the majority of water requirements. Several potential water sources, including potable, recycled and stormwater have been identified to provide water quantities which could meet and exceed the requirements for the Project.

A decision on the sources of water would be made on sustainability and economic factors and would be subject to further design and consultation.

4.7 Biodiversity and land management

Issue description

The Project would result in the destruction of local wildlife and their habitat including endangered species such as the swift parrot, regent honeyeater and the brush tailed rock wallaby.

There has been inadequate land management on the site and the Project would result in the spread of weeds on neighbouring properties.

Response

The 2008 Environmental Impact Assessment evaluated biodiversity in Chapter 11. The modification application seeks to extend the lapse date of the Project Approvals only and would not result in any additional biodiversity impacts not already assessed in the 2008 Environmental Impact Assessment.

EnergyAustralia commits to designing and positioning the Project such that the impacts to flora and fauna are minimised to the maximum extent possible. EnergyAustralia proposed to undertake additional ecological surveys and to comply with the Conditions of Approval which require surveying and offsetting to demonstrate the avoidance of endangered ecological communities.

Weed control protocols would be provided in a construction and operation Weed and Pest Management Plan to appropriately manage the spread and disposal of weeds during and after construction. A Vegetation Management Plan would also be prepared and implemented to provide actions for the control of weeds within offset sites.

EnergyAustralia is actively engaging with Upper Lachlan Shire Council regarding land management and control of noxious weeds on the property with ongoing land management commencing in 2020.

4.8 Visual, socio-economic and land use

Issue description

The construction of the Project including the exhaust stacks would result in visual impacts and reduce the enjoyment of nearby properties and communities.

New residents to Brayton, Marulan and the subdivisions along Canyonleigh Road in Wingecarribee Shire may be unaware of the Project.

The EnergyAustralia spokespersons have mentioned needing community support to go ahead with the Project, however the local community do not support the Project.

The Project would result in the reduction of the quiet rural atmosphere, property value and the destruction of green space in the rural landscape which is surrounded by properties zoned Rural Residential.

Response

The 2008 Environmental Impact Assessment evaluated visual amenity and socio-economic factors in Chapter 13 and 18, respectively. The modification application seeks to extend the time frame for the Project and would not result in any additional visual impacts or socio-economic impacts not already assessed in the 2008 Environmental Impact Assessment .

The upper portions of the exhaust stacks may be directly visible from a small number of surrounding properties and would be partially screened by landform and vegetation. Further design would consider minimising the visual impacts by screen plantings and lighting design.

EnergyAustralia has notified all adjacent property owners regarding the modification application by mailout. Additional consultation included the advertisement of the modification application in the Goulburn Post. Consultation activities would continue during future development of the Project.

The approval of the modification application would provide for extension of the existing approval lapse date to 2024. The community has been consulted with at all stages of the Project's development. EnergyAustralia will continue to consult with local communities during future Project development.

The 2008 Environmental Impact Assessment evaluated noise, land use and socio-economic impacts in Chapters 8, 17 and 18, respectively. The modification application seeks to extend the time frame for the development and would not result in any additional noise, land use and socio-economic impacts not already assessed in the 2008 Environmental Impact Assessment.

The 2008 Environmental Impact Assessment assessed potential noise impacts against the NSW DECC Industrial Noise Policy (INP). As the area is classified as 'rural', the acceptable noise limit is 35 dB (A). The assessment found that this would likely be marginally exceeded at few locations in close proximity to the Project during adverse weather conditions. During further design, acoustic and architectural treatments to minimise noise on site and/or nearby residence would be considered.

It is noted that the existing value of land surrounding the Project is based on its current use RU2 Rural Landscape. It is considered other impacts of the Project would be adequately mitigated to avoid any loss in value of nearby properties.

4.9 Noise and vibration

Issue description

The Project would generate construction noise for a year and ongoing operational noise.

Response

The 2008 Environmental Impact Assessment evaluated noise and vibration in Chapter 8. The modification application seeks to extend the time frame for the development and would not result in any additional noise and vibration impacts not already assessed in the 2008 Environmental Impact Assessment.

EnergyAustralia will prepare both a construction and operational noise and vibration management plan for the Project. EnergyAustralia commits to reducing adverse impacts to the minimum extent necessary in compliance with the conditions of approval. During further design, acoustic and architectural treatments to minimise noise on site and/or nearby residence would be considered.

4.10 Traffic and transport

Issue description

The Project would result in increased heavy vehicle traffic along Brayton Road and Canyonleigh Road which would increase the risk of car accidents for residents and wildlife.

There is uncertainty around who would be responsible for repairing and maintaining nearby existing roads that may be damaged in the process.

Response

The 2008 Environmental Impact Assessment evaluated traffic and transport in Chapter 10. The modification application seeks to extend the time frame for the development and would not result in any additional traffic and transport impacts not already assessed in the 2008 Environmental Impact Assessment.

Prior to construction of the Project, Canyonleigh Road would be upgraded and sealed as required by the Project Approval. A traffic management plan would also be prepared and implemented during the construction of the Project to minimise any impacts.

Pre and post construction evaluations of pavement condition would also be undertaken to determine the remedial action required following the passage of oversized vehicles.

5 CONCLUSION

EnergyAustralia is seeking to modify the existing Project Approvals for the Marulan Gas Fired Power Station Project to extend the lapse date by five years. This will enable construction to commence by 2024.

As the National Electricity Market continues to transition including with the influx of renewables, the Project remains of critical importance to the energy future of NSW. Marulan is an important option for new gas generation in NSW to secure electricity supplies and to complement new renewable generation in the NSW wholesale market.

This Report has been prepared to support the modification application of the Project Approvals to extend the lapse date. This Report provides responses to matters raised during public exhibition of the modification application.

As the modification application is only to extend the lapse date of the Project approvals to 2024, no revisions have been made to the Project description, impact assessment or environmental management measures.

Should the modification application be approved, the mitigation measures and conditions of approval described in the Submissions Report and Preferred Project Report (EnergyAustralia, 2009b) and the Director General's Environmental Assessment Report (Department of Planning, 2009) would apply and will be fully complied with.

APPENDIX A – SUBMISSIONS LIST

Table 4 lists the respondent's submission reference numbers and the section reference where submission issues have been addressed in this Report. It illustrates how the duplicate submissions under separate Project Approvals have been collated into a single identification number where the submitter can be identified.

Table 4– Submissions and issues considered

Submission type	Id Number	Submission ID Number	Submitter ID number	Submission under Project Approval	Submitter name	Submitter location	Section where issues are addressed
Public Authority	1	SE-106452	S-106279	MP07-0174	Goulburn	Goulburn, NSW	2.1
		SE-106450	S-106280	MP07-0175	Mulwaree Council		
		SE-106451	S-106281	MP07-0176			
Public Authority	2	SE-120693	S-105497	MP07-0174	WaterNSW	Parramatta, NSW	2.1
		SE-105638	S-105498	MP07-0175			
		SE-105637	S-120502	MP07-0176			
Public Authority	3	SE-106446	S-106275	MP07-0174	NSW EPA	Bathurst, NSW	2.1
		SE-106449	S-106277	MP07-0175			
		SE-106448	S-106278	MP07-0176			
Organisation	4	SE-106378	S-106208	MP07-0174	HES Investments Pty Ltd	South Sydney, NSW	2.5, 2.6, 2.7, 2.8, 2.9
Public	5	SE-105704	S-105561	MP07-0174	Adam Pfeuffer	Bligh Park, NSW	2.3, 2.5, 2.6, 2.7, 2.8, 2.9, 2.10
		SE-105702	S-105562	MP07-0175			
		SE-105703	S-105563	MP07-0176			
Public	6	SE-106031	S-105866	MP07-0174	Alessandro	Brayton, NSW	2.3, 2.4, 2.5, 2.6, 2.7, 2.8, 2.9, 2.10
		SE-106028	S-105869	MP07-0175	Donagh-De Marchi		
		SE-106032	S-105870	MP07-0176			
Public	7	SE-105674	S-105533	MP07-0174	Alison Donagh	Brayton, NSW	2.3, 2.4, 2.5, 2.6, 2.7, 2.8, 2.9, 2.10
		SE-105677	S-105536	MP07-0175			
		SE-105678	S-105537	MP07-0176			
Public	8	SE-105689	S-105546	MP07-0174	Andrew	Brayton, NSW	2.3, 2.5, 2.6, 2.7, 2.8, 2.9, 2.10
		SE-105687	S-105547	MP07-0175	Stephenson		
		SE-105688	S-105548	MP07-0176			
Public	9	SE-105699	S-105558	MP07-0174	Ankie Fletcher	Corlette, NSW	2.3, 2.4, 2.5, 2.6, 2.7, 2.8, 2.9, 2.10
		SE-105700	S-105559	MP07-0175			

		SE-105701	S-105560	MP07-0176			
Public	10	SE-106301	S-106131	MP07-0174	Anthony Cole	Goulburn, NSW	2.5
Public	11	SE-106309	S-106139	MP07-0174	Anthony Egan	Boxers Creek, NSW	2.5, 2.6
Public	12	SE-105543	S-105405	MP07-0174	Antonia Stephenson	Brayton, NSW	2.5, 2.6, 2.7, 2.9, 2.10
		SE-106393	S-106222	MP07-0175			
		SE-106397	S-106226	MP07-0176			
Public	13	SE-120723	S-120532	MP07-0174	Brett Breen	Brayton, NSW	2.3, 2.5, 2.6, 2.7, 2.8, 2.9, 2.10
		SE-120725	S-120534	MP07-0175			
		SE-120729	S-120538	MP07-0176			
Public	14	SE-105951	S-105508	MP07-0174	Bronte Raymond	San Remo, NSW	2.3, 2.5, 2.6, 2.7, 2.8, 2.9, 2.10
		SE-105648	S-105793	MP07-0175			
		SE-105950	S-105794	MP07-0176			
Public	15	SE-106318	S-106148	MP07-0174	Catherine Deakin	Potts Point, NSW	2.8
Public	16	SE-105632	S-105484	MP07-0174	Catriona Atkins	Eugowra, NSW	2.3, 2.5, 2.6, 2.7, 2.8, 2.9, 2.10
		SE-105623	S-105490	MP07-0175			
		SE-105630	S-105492	MP07-0176			
Public	17	SE-106286	S-106116	MP07-0174	Charlie Prell	Crookwell, NSW	2.2
Public	18	SE-106302	S-106132	MP07-0174	Chris and Trevor Besley	Wayo, NSW	N/A. The submission did not include any reasoning, only an objection.
Public	19	SE-106304	S-106134	MP07-0174	Constance McCabe	Goulburn, NSW	N/A. The submission did not include any reasoning, only an objection.
Public	20	SE-105661	S-105517	MP07-0174	Dakota Gow	Brayton, NSW	2.3, 2.4, 2.5, 2.6, 2.7, 2.8, 2.10
		SE-105658	S-105518	MP07-0175			

		SE-105659	S-105520	MP07-0176			
Public	21	SE-105650	S-105509	MP07-0174	Daniel McLean	North Bondi, NSW	2.3, 2.5, 2.6, 2.7, 2.8, 2.9, 2.10
		SE-105653	S-105510	MP07-0175			
		SE-105651	S-105512	MP07-0176			
Public	22	SE-106312		MP07-0174	Dimity Taylor	Bannister, NSW	N/A. The submission did not include any reasoning, only an objection.
			S-106142				
Public	23	SE-105594		MP07-0175	Elisabeth Brazier	Toormina, NSW	2.5, 2.7, 2.8, 2.9
			S-105455				
Public	24	SE-106314		MP07-0174	Emma Breeze	Marulan, NSW	N/A. The submission did not include any reasoning, only an objection.
			S-106144				
Public	25	SE-106311		MP07-0174	Eva-Maria Bernoth	Goulburn, NSW	N/A. The submission did not include any reasoning, only an objection.
			S-106141				
Public	26	SE-105617	S-105476	MP07-0174	Hannah Skillicorn	Brayton, NSW	2.3, 2.5, 2.6, 2.7, 2.9, 2.8, 2.10
		SE-105615	S-105477	MP07-0175			
		SE-105616	S-105478	MP07-0176			
Public	27	SE-105680	S-105535	MP07-0174	Harriet Atkins	Hillsdale, NSW	2.3, 2.5, 2.6, 2.7, 2.8, 2.9, 2.10
		SE-105676	S-105538	MP07-0175			
		SE-105679	S-105539	MP07-0176			
Public	28	SE-106305		MP07-0174	Howard Witt	Heathcote, NSW	2.4, 2.5
			S-106135				
Public	29	SE-106287		MP07-0174	Ian Anderson	Woodhousele e, NSW	2.4
			S-106117				
Public	30	SE-106382		MP07-0174	Jacqueline and Peter Upcroft	Brayton, NSW	2.4, 2.8, 2.5, 2.6, 2.7, 2.10
			S-106212				
Public	31	SE-105695	S-105554	MP07-0174	Jeanette Brossard	Brayton, NSW	2.3, 2.5, 2.6, 2.7, 2.8, 2.9, 2.10
		SE-105697	S-105556	MP07-0175			

		SE-105698	S-105557	MP07-0176			
Public	32	SE-105981	S-105820	MP07-0174	Jesse Kay	Manyana, NSW	2.3, 2.5, 2.6, 2.7, 2.8, 2.9, 2.10
		SE-105982	S-105821	MP07-0175			
		SE-105983	S-105822	MP07-0176			
Public	33	SE-105587	S-105448	MP07-0174	Jonathan Dreyfus- Schmidt	Randwick, NSW	2.3, 2.5, 2.6, 2.7, 2.8, 2.9, 2.10
		SE-105683	S-105449	MP07-0175			
		SE-105588	S-105542	MP07-0176			
Public	34	SE-105684	S-105450	MP07-0174	Jonathan Van Vorst	Pelaw Main, NSW	2.3, 2.5, 2.6, 2.7, 2.8, 2.9, 2.10
		SE-105589	S-105543	MP07-0175			
		SE-105685	S-105544	MP07-0176			
Public	35	SE-105671		MP07-0174	Jonathon Ignacz	Brayton, NSW	2.3, 2.5, 2.6, 2.7, 2.8, 2.9, 2.10
			S-105530				
Public	36	SE-105693	S-105549	MP07-0174	Julian Brossard	Brayton, NSW	2.3, 2.5, 2.6, 2.7, 2.8, 2.9, 2.10
		SE-105692	S-105551	MP07-0175			
		SE-105690	S-105552	MP07-0176			
Public	37	SE-106319		MP07-0174	Karen Fisher	Potts Point, NSW	2.4, 2.7
			S-106149				
Public	38	SE-106161		MP07-0174	Ken McCabbin	Goulburn, NSW	2.4
			S-105993				
Public	39	SE-106320	S-106150	MP07-0174	Ken McNally	Brayton, NSW	2.5, 2.6, 2.7, 2.8, 2.9, 2.10
		SE-106376	S-106206	MP07-0175			
		SE-106377	S-106207	MP07-0176			
Public	40	SE-105750		MP07-0176	Kim Smith	Double Bay, NSW	2.3, 2.5, 2.6, 2.7, 2.8, 2.9, 2.10
			S-105609				
Public	41	SE-106307		MP07-0174	Linda Cole	Goulburn, NSW	N/A. The submission did not include any reasoning, only an objection.
			S-106137				

Public	42	SE-106303	S-106133	MP07-0174	Maria Styles	Lake Bathurst, NSW	N/A. The submission did not include any reasoning, only an objection.
Public	43	SE-105957	S-105800	MP07-0175	Mary-Anne Stenning	Beaumont Hills, NSW	2.3, 2.5, 2.6, 2.7, 2.8, 2.9, 2.10
Public	44	SE-106308	S-106138	MP07-0174	Meave Ramsay	Taralga, NSW	2.4
Public	45	SE-105937	S-105747	MP07-0174	Michael Aitken	Mansfield, QLD	2.3, 2.5, 2.6, 2.7, 2.8, 2.9, 2.10
		SE-105900	S-105781	MP07-0175			
		SE-105940	S-105784	MP07-0176			
Public	46	SE-105611	S-105472	MP07-0174	Name Withheld	Brayton, NSW	2.3, 2.5, 2.6, 2.7, 2.8, 2.9, 2.10
Public	47	SE-105961	S-105472	MP07-0174	Name Withheld	Brayton, NSW	2.2, 2.5, 2.8, 2.9, 2.10
Public	48	SE-105612	S-105473	MP07-0175	Name Withheld	Brayton, NSW	2.3, 2.5, 2.6, 2.7, 2.8, 2.9, 2.10
Public	49	SE-105962	S-105473	MP07-0175	Name Withheld	Brayton, NSW	2.2, 2.5, 2.8, 2.9, 2.10
Public	50	SE-105613	S-105474	MP07-0176	Name Withheld	Brayton, NSW	2.3, 2.5, 2.6, 2.7, 2.8, 2.9, 2.10
Public	51	SE-105964	S-105474	MP07-0176	Name Withheld	Brayton, NSW	2.2, 2.5, 2.8, 2.9, 2.10
Public	52	SE-106381	S-106211	MP07-0174	Name Withheld	Darlinghurst, NSW	2.5, 2.6, 2.7
Public	53	SE-105686	S-105545	MP07-0174	Name Withheld	Double Bay, NSW	2.3, 2.5, 2.6, 2.7, 2.8, 2.9, 2.10
Public	54	SE-106027	S-105865	MP07-0174	Name Withheld	Eugowra, NSW	2.3, 2.4, 2.5, 2.6, 2.7, 2.8, 2.9, 2.10

Public	55	SE-106029	S-105867	MP07-0175	Name Withheld	Eugowra, NSW	2.3, 2.4, 2.5, 2.6, 2.7, 2.8, 2.9, 2.10
Public	56	SE-106030	S-105868	MP07-0176	Name Withheld	Eugowra, NSW	2.3, 2.4, 2.5, 2.6, 2.7, 2.8, 2.9, 2.10
Public	57	SE-105707	S-105566	MP07-0174	Name Withheld	Galston, NSW	2.3, 2.5, 2.6, 2.7, 2.8, 2.9, 2.10
Public	58	SE-105705	S-105564	MP07-0175	Name Withheld	Galston, NSW	2.3, 2.5, 2.6, 2.7, 2.8, 2.9, 2.10
Public	59	SE-105706	S-105565	MP07-0176	Name Withheld	Galston, NSW	2.3, 2.5, 2.6, 2.7, 2.8, 2.9, 2.10
Public	60	SE-105968	S-105808	MP07-0174	Name Withheld	Galston, NSW	2.3, 2.5, 2.6, 2.7, 2.8, 2.9, 2.10
Public	61	SE-105966	S-105806	MP07-0175	Name Withheld	Galston, NSW	2.3, 2.5, 2.6, 2.7, 2.8, 2.9, 2.10
Public	62	SE-105967	S-105807	MP07-0176	Name Withheld	Galston, NSW	2.3, 2.5, 2.6, 2.7, 2.8, 2.9, 2.10
Public	63	SE-105640	S-105500	MP07-0174	Name Withheld	Glenorie, NSW	2.3, 2.5, 2.6, 2.7, 2.8, 2.9, 2.10
Public	64	SE-105641	S-105501	MP07-0175	Name Withheld	Glenorie, NSW	2.3, 2.5, 2.6, 2.7, 2.8, 2.9, 2.10
Public	65	SE-105642	S-105502	MP07-0176	Name Withheld	Glenorie, NSW	2.3, 2.5, 2.6, 2.7, 2.8, 2.9, 2.10
Public	66	SE-106298	S-106128	MP07-0174	Name Withheld	Goulburn, NSW	2.5, 2.6
Public	67	SE-106306	S-106136	MP07-0174	Name Withheld	Goulburn, NSW	2.4
Public	68	SE-105631	S-105491	MP07-0174	Name Withheld	Holland Park West, QLD	2.3, 2.5, 2.6, 2.7, 2.8, 2.9, 2.10

Public	69	SE-105633	S-105493	MP07-0175	Name Withheld	Holland Park West, QLD	2.3, 2.5, 2.6, 2.7, 2.8, 2.9, 2.10
Public	70	SE-105634	S-105494	MP07-0176	Name Withheld	Holland Park West, QLD	2.3, 2.5, 2.6, 2.7, 2.8, 2.9, 2.10
Public	71	SE-105769	S-105625	MP07-0174	Name Withheld	Little Bay, NSW	2.3, 2.5, 2.6, 2.7, 2.8, 2.9, 2.10
Public	72	SE-105770	S-105626	MP07-0175	Name Withheld	Little Bay, NSW	2.3, 2.5, 2.6, 2.7, 2.8, 2.9, 2.10
Public	73	SE-105772	S-105628	MP07-0176	Name Withheld	Little Bay, NSW	2.3, 2.5, 2.6, 2.7, 2.8, 2.9, 2.10
Public	74	SE-105942	S-105786	MP07-0174	Name Withheld	Little Bay, NSW	2.3, 2.5, 2.6, 2.7, 2.8, 2.9, 2.10
Public	75	SE-105943	S-105787	MP07-0175	Name Withheld	Little Bay, NSW	2.3, 2.5, 2.6, 2.7, 2.8, 2.9, 2.10
Public	76	SE-105944	S-105788	MP07-0176	Name Withheld	Little Bay, NSW	2.3, 2.5, 2.6, 2.7, 2.8, 2.9, 2.10
Public	77	SE-105654	S-105513	MP07-0175	Name Withheld	Box Hill, NSW	2.3, 2.5, 2.6, 2.7, 2.8, 2.9, 2.10
Public	78	SE-105656	S-105515	MP07-0176	Name Withheld	Box Hill, NSW	2.3, 2.5, 2.6, 2.7, 2.8, 2.9, 2.10
Public	79	SE-105663	S-105522	MP07-0175	Name Withheld	Box Hill, NSW	2.3, 2.5, 2.6, 2.7, 2.8, 2.9, 2.10
Public	80	SE-105664	S-105523	MP07-0176	Name Withheld	Box Hill, NSW	2.3, 2.5, 2.6, 2.7, 2.8, 2.9, 2.10
Public	81	SE-105667	S-105526	MP07-0175	Name Withheld	McGraths Hill, NSW	2.3, 2.5, 2.6, 2.7, 2.8, 2.9, 2.10
Public	82	SE-105668	S-105527	MP07-0176	Name Withheld	McGraths Hill, NSW	2.3, 2.5, 2.6, 2.7, 2.8, 2.9, 2.10

Public	83	SE-105580	S-105441	MP07-0175	Name Withheld	Paddington, NSW	2.3, 2.5, 2.6, 2.7, 2.8, 2.9, 2.10
Public	84	SE-105581	S-105442	MP07-0176	Name Withheld	Paddington, NSW	2.3, 2.5, 2.6, 2.7, 2.8, 2.9, 2.10
Public	85	SE-106007	S-105845	MP07-0175	Name Withheld	Schofields, NSW	2.3, 2.5, 2.6, 2.7, 2.8, 2.9, 2.10
Public	86	SE-120722	S-120531	MP07-0174	Neset Anar	Brayton, NSW	2.3, 2.5, 2.6, 2.7, 2.8, 2.9, 2.10
		SE-120724	S-120533	MP07-0175			
		SE-120728	S-120537	MP07-0176			
Public	87	SE-106300	S-106130	MP07-0174	Peter Styles	Lake Bathurst, NSW	N/A. The submission did not include any reasoning, only an objection.
Public	88	SE-105936	S-105780	MP07-0174	Robert Allen	Glenorie, NSW	2.3, 2.5, 2.6, 2.7, 2.8, 2.9, 2.10
		SE-105938	S-105782	MP07-0175			
		SE-105939	S-105783	MP07-0176			
Public	89	SE-106317	S-106147	MP07-0174	Rod Hoare	Binda, NSW	2.4
Public	90	SE-120691	S-120500	MP07-0174	Rodney Sieler	Brayton, NSW	2.3, 2.5, 2.6, 2.7, 2.8
		SE-120686	S-120495	MP07-0175			
		SE-120690	S-120499	MP07-0176			
Public	91	SE-106313	S-106143	MP07-0174	Sally Easlea	Kingsdale, NSW	2.4
Public	92	SE-106315	S-106145	MP07-0174	Tom Hunt	Oak Flats, NSW	2.4
Public	93	SE-105665	S-105524	MP07-0175	Tom Ignacz	Box Hill, NSW	2.3, 2.5, 2.6, 2.7, 2.8, 2.9, 2.10
		SE-105666	S-105525	MP07-0176			
Public	94	SE-106395	S-106224	MP07-0175	Vivienne Stevens	Darlinghurst, NSW	2.4, 2.5, 2.6, 2.7
		SE-106400	S-106229	MP07-0176			