



- AMENITIES
- APPLIED RESEARCH
- CARPARK
- CARPARK SERVICES
- CIRCULATION
- INDUSTRY ENGAGEMENT
- LEARNING SPACES
- SERVICES
- STORE
- WORKSHOP
- WORKSPACE

GRAY PUKSAND

DISCLAIMER

This document may not be secure, may be corrupted in transmission or due to software incompatibility and/or may be amended or altered by third parties after leaving Gray Puksand's possession.

Gray Puksand is not responsible for and accepts no liability for such matters. Subject only to any conflicting provision within any prior binding agreement, by Gray Puksand (which agreement may also contain additional conditions relating to this document and its use):

- The content of this document is confidential and copyright in it belongs to Gray Puksand. They are permitted only to be opened, read and used by the addressee.
- All users of this document must carry out all relevant investigations and must examine, take advice as required and satisfy themselves concerning the contents, correctness and sufficiency of the attachment and its contents for their purposes.
- To the extent permitted by law, all conditions and warranties concerning this document or any use to which they may be put (whether as to quality, outcome, fitness, care, skill or otherwise) whether express or implied by statute, common law, equity, trade, custom or usage or otherwise are expressly excluded.
- Any person using or relying on this document releases, indemnifies, and will keep indemnified, Gray Puksand against all claims, liabilities, loss, costs and expenses arising directly or indirectly out of or in connection with such use or reliance including without limitation any misrepresentation, error or defect in this document.

Contractors to use Architectural drawings for set out.
Contractors to check & verify all Dimensions on Site prior to Construction/Fabrication.
Figured Dimensions take precedence over Scaled Dimensions.
Any Discrepancies should be immediately referred to the Architect.
All work to comply with N.C.C. Statutory Authorities & Relevant Australian Standards.

NSW Nominated Architects Scott Moylan 7147 Craig Saltmarsh 6569

HANSEN YUNCKEN



REV	DESCRIPTION	DATE
A	Issue for SSDA	04.10.19
B	Issue for SSDA	09.10.19
C	Issue for SSDA	30.04.20

PROJECT NO	220014
DRAWN	RD / TA
CHECKED	RD
APPROVED	BH

TAFE NSW - Meadowbank
Multi-Trades and Digital
Technology Hub

SSDA APPROVAL ISSUE

LEVEL 01 FLOOR PLAN

DWG #	DA11	REV	C
SCALE @ A1	1 : 250		



GRAY PUKSAND

DISCLAIMER

This document may not be secure, may be corrupted in transmission or due to software incompatibility and/or may be amended or altered by third parties after leaving Gray Puksand's possession.

Gray Puksand is not responsible for and accepts no liability for such matters. Subject only to any conflicting provision within any prior binding agreement, by Gray Puksand (which agreement may also contain additional conditions relating to this document and its use):

- The content of this document is confidential and copyright in it belongs to Gray Puksand. They are permitted only to be opened, read and used by the addressee.
- All users of this document must carry out all relevant investigations and must examine, take advice as required and satisfy themselves concerning the contents, correctness and sufficiency of the attachment and its contents for their purposes.
- To the extent permitted by law, all conditions and warranties concerning this document or any use to which they may be put (whether as to quality, outcome, fitness, care, skill or otherwise) whether express or implied by statute, common law, equity, trade, custom or usage or otherwise are expressly excluded.
- Any person using or relying on this document releases, indemnifies, and will keep indemnified, Gray Puksand against all claims, liabilities, loss, costs and expenses arising directly or indirectly out of or in connection with such use or reliance including without limitation any misrepresentation, error or defect in this document.

Contractors to use Architectural drawings for set out.
Contractors to check & verify all Dimensions on Site prior to Construction/Fabrication.
Figured Dimensions take precedence over Scaled Dimensions.
Any Discrepancies should be immediately referred to the Architect.
All work to comply with N.C.C. Statutory Authorities & Relevant Australian Standards.

NSW Nominated Architects Scott Moylan 7147 Craig Saltmarsh 6569

HANSEN YUNCKEN



REV	DESCRIPTION	DATE
A	Issue for SSDA	04.10.19
B	Issue for SSDA	09.10.19
C	Issue for SSDA	30.04.20

PROJECT NO
DRAWN
CHECKED
APPROVED

220014
RD / TA
RD
BH

TAFE NSW - Meadowbank
Multi-Trades and Digital
Technology Hub

SSDA APPROVAL ISSUE

LEVEL 02 FLOOR PLAN

DWG #
SCALE @ A1

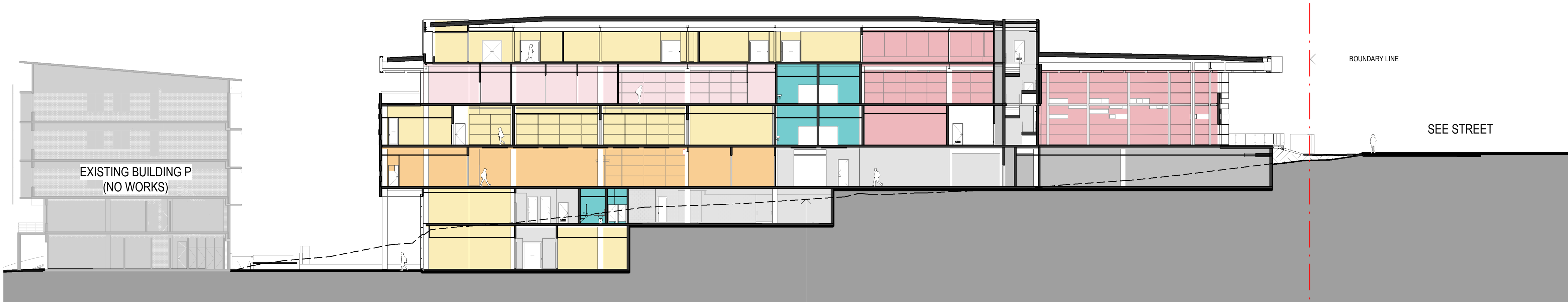
DA12

REV

C

1 : 250

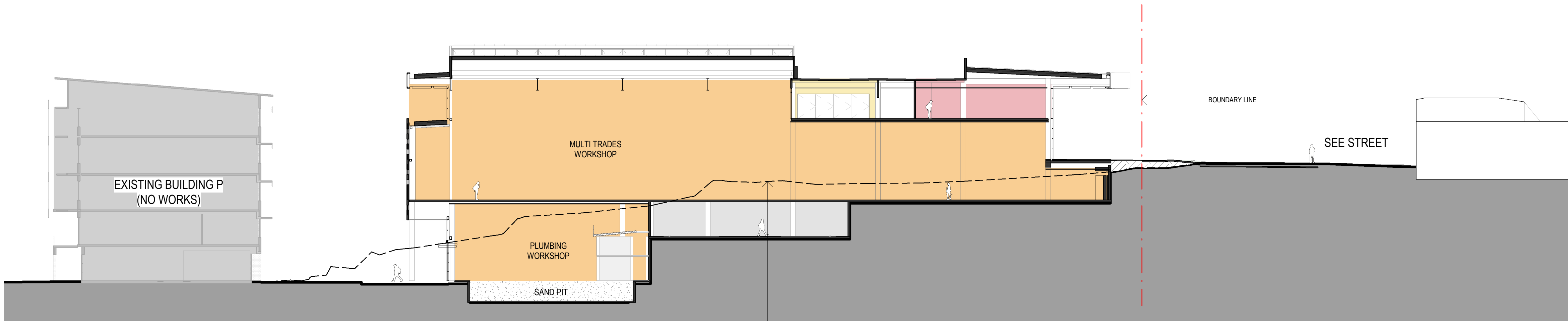
C:\Revit\200014_TAFE NSW Meadowbank_Multi Trades Hub_C19_SSDA_Iaitken_GP.rvt
30/04/2020 4:11:27 PM



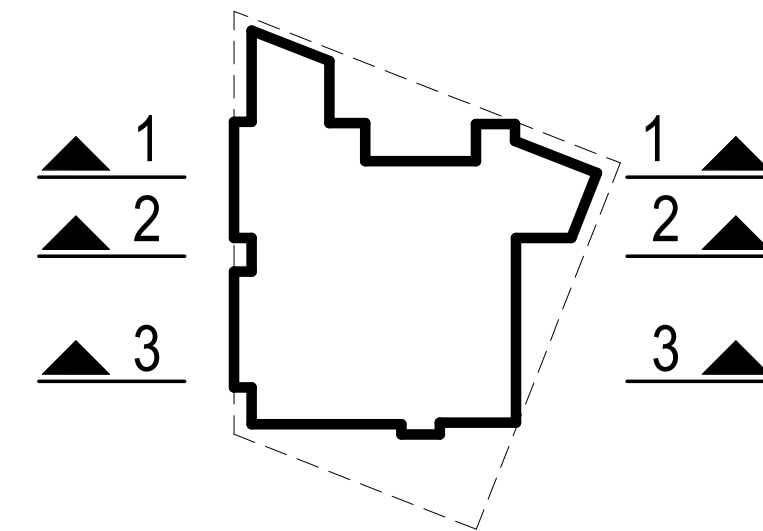
1 EAST - WEST SECTION
1 : 250



2 EAST - WEST SECTION
1 : 250



3 EAST - WEST SECTION
1 : 250



LEVEL 6	33.470	AMENITIES
LEVEL 5	29.470	APPLIED RESEARCH
LEVEL 4	25.470	CARPARK
LEVEL 3	21.470	CARPARK SERVICES
LEVEL 2	17.870	CIRCULATION
LEVEL 1	13.470	INDUSTRY ENGAGEMENT
		LEARNING SPACES
		SERVICES
		STORE
		WORKSHOP
		WORKSPACE
T.O. SKYLIGHT	40.850	

GRAY PUKSAND

DISCLAIMER

This document may not be secure, may be corrupted in transmission or due to software incompatibility and/or may be amended or altered by third parties after leaving Gray Puksand's possession.

Gray Puksand is not responsible for and accepts no liability for such matters. Subject only to any conflicting provision within any prior binding agreement, by Gray Puksand (which agreement may also contain additional conditions relating to this document and its use):

1. The content of this document is confidential and copyright in it belongs to Gray Puksand. They are permitted only to be opened, read and used by the addressee.
2. All users of this document must carry out all relevant investigations and must examine, take advice as required and satisfy themselves concerning the contents, correctness and sufficiency of the attachment and its contents for their purposes.
3. To the extent permitted by law, all conditions and warranties concerning this document or any use to which they may be put (whether as to quality, outcome, fitness, care, skill or otherwise) whether express or implied by statute, common law, equity, trade, custom or usage or otherwise are expressly excluded.
4. Any person using or relying on this document releases indemnifies, and will keep indemnified Gray Puksand against all claims, liabilities, loss, costs and expenses arising directly or indirectly out of or in connection with such use or reliance including without limitation any misrepresentation, error or defect in this document.

Contractors to use Architectural drawings for set out.
Contractors to check & verify all Dimensions on Site prior to Construction/Fabrication.
Figured Dimensions take precedence over Scaled Dimensions.
Any Discrepancies should be immediately referred to the Architect.
All work to comply with N.C.C. Statutory Authorities & Relevant Australian Standards.

NSW Nominated Architects Scott Moylan 7147 Craig Saltmarsh 6569

HANSEN YUNCKEN



REV	DESCRIPTION	DATE
A	Issue for SSDA	04.10.19
B	Issue for SSDA	09.10.19
C	Issue for SSDA	30.04.20

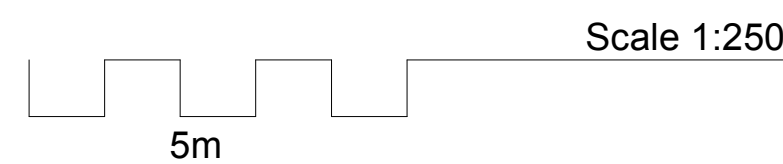
PROJECT NO	220014
DRAWN	RD / TA
CHECKED	RD
APPROVED	BH

TAFE NSW - Meadowbank
Multi-Trades and Digital
Technology Hub

SSDA APPROVAL ISSUE

SECTIONS - EAST-WEST

DWG #	DA25	REV	C
SCALE @ A1	As indicated		





1 SOUTH - NORTH SECTION
1 : 250



2 SOUTH - NORTH SECTION
1 : 250

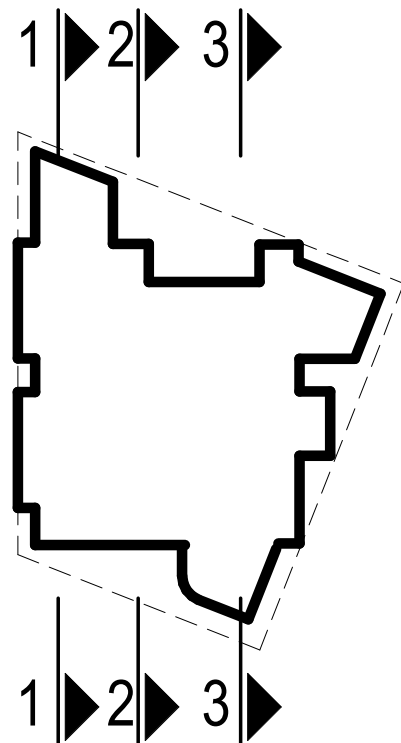


3 SOUTH - NORTH SECTION
1 : 250

T.O. SKYLIGHT	▼
40.850	
LEVEL 6	▼
33.470	
LEVEL 5	▼
29.470	
LEVEL 4	▼
25.470	
LEVEL 3	▼
21.470	
LEVEL 2	▼
17.870	
LEVEL 1	▼
13.470	

T.O. SKYLIGHT	▼
40.850	
LEVEL 6	▼
33.470	
LEVEL 5	▼
29.470	
LEVEL 4	▼
25.470	
LEVEL 3	▼
21.470	
LEVEL 2	▼
17.870	

T.O. SKYLIGHT	▼
40.850	
LEVEL 6	▼
33.470	
LEVEL 5	▼
29.470	
LEVEL 4	▼
25.470	
LEVEL 3	▼
21.470	



- AMENITIES
- APPLIED RESEARCH
- CARPARK
- CARPARK SERVICES
- CIRCULATION
- INDUSTRY ENGAGEMENT
- LEARNING SPACES
- SERVICES
- STORE
- WORKSHOP
- WORKSPACE

GRAY PUKSAND

DISCLAIMER
This document may not be secure, may be corrupted in transmission or due to software incompatibility and/or may be amended or altered by third parties after leaving Gray Puksand's possession.
Gray Puksand is not responsible for and accepts no liability for such matters. Subject only to any conflicting provision within any prior binding agreement, by Gray Puksand (which agreement may also contain additional conditions relating to this document and its use):
1. The content of this document is confidential and copyright in it belongs to Gray Puksand. They are permitted only to be opened, read and used by the addressee.
2. All users of this document must carry out all relevant investigations and must examine, take advice as required and satisfy themselves concerning the contents, correctness and sufficiency of the attachment and its contents for their purposes.
3. To the extent permitted by law, all conditions and warranties concerning this document or any use to which they may be put (whether as to quality, outcome, fitness, care, skill or otherwise) whether express or implied by statute, common law, equity, trade, custom or usage or otherwise are expressly excluded.
4. Any person using or relying on this document releases indemnifies, and will keep indemnified, Gray Puksand against all claims, liabilities, loss, costs and expenses arising directly or indirectly out of or in connection with such use or reliance including without limitation any misrepresentation, error or defect in this document.
Contractors to use Architectural drawings for set out.
Contractors to check & verify all Dimensions on Site prior to Construction/Fabrication. Figured Dimensions take precedence over Scaled Dimensions.
Any Discrepancies should be immediately referred to the Architect.
All work to comply with N.C.C. Statutory Authorities & Relevant Australian Standards.
NSW Nominated Architects Scott Moylan 7147 Craig Saltmarsh 6569

HANSEN YUNCKEN



REV	DESCRIPTION	DATE
A	Issue for SSDA	04.10.19
B	Issue for SSDA	09.10.19
C	Issue for SSDA	30.04.20

PROJECT NO	220014
DRAWN	RD / TA
CHECKED	RD
APPROVED	BH

TAFE NSW - Meadowbank
Multi-Trades and Digital
Technology Hub

SSDA APPROVAL ISSUE

SECTIONS - SOUTH-NORTH

DWG #	DA26	REV	C
SCALE @ A1	As indicated		

