

LEGEND

SITE BOUNDARY

MAXIMUM PLANNING ENVELOPE ABOVE GROUND LEVEL

MAXIMUM PLANNING ENVELOPE BELOW GROUND LEVEL

CONSTRUCTION ROAD ALONG APPROXIMATE ALIGNMENT OF FINAL CAMPUS ROAD (DETAILS TO BE FINALISED IN STAGE 2)

ROAD INTERSECTION CONSTRUCTED IN ACCORDANCE WITH S.138 APPROVAL REFLECTING FINAL ALIGNMENT. TEMPORARY SEAL (FINAL SEAL, KERBING, FOOTPATH / CYCLEWAY (AS RELEVANT), LINE MARKING ETC. TO BE COMPLETED IN STAGE 2

TEMPORARY CONSTRUCTION ROAD

EXISTING TREES TO BE RETAINED REFER "L-EIS-1 TREE REMOVAL AND PRESERVATION PLAN"

03	ISSUED FOR INFORMATION	02/05/2019
04	ISSUED FOR INFORMATION	03/05/2019
05	ISSUED FOR INFORMATION	09/08/2019
06	ISSUED FOR INFORMATION	28/08/2019
07	ISSUED FOR INFORMATION	11/09/2019

**COPYRIGHT**  
ALL RIGHTS RESERVED. THIS WORK IS COPYRIGHT AND CANNOT BE REPRODUCED OR COPIED IN ANY FORM OR BY ANY MEANS (GRAPHIC, ELECTRONIC OR MECHANICAL, INCLUDING PHOTOCOPYING) WITHOUT THE WRITTEN PERMISSION OF THE PRINCIPAL UNDER THE TERMS OF THE CONTRACT. ANY LICENCE, EXPRESS OR IMPLIED, TO USE THE DOCUMENT FOR ANY PURPOSE WHATSOEVER IS RESTRICTED TO THE TERMS OF THE AGREEMENT OR IMPLIED AGREEMENT WITH THE PRINCIPAL UNDER THE TERMS OF THE CONTRACT.

**DIMENSIONS**  
**USE FIGURED DIMENSIONS, DO NOT SCALE. CONTRACTORS MUST VERIFY ALL DIMENSIONS ON THE SITE BEFORE COMMENCING ANY WORK OR MAKING ANY SHOP DRAWING WHICH MUST BE SUBMITTED AND REVIEWED BEFORE MANUFACTURE.**

**FIXTURES, FITTINGS & EQUIPMENT SPECIFICATIONS**  
SUBSTITUTE FF&E EQUIPMENT SPECIFICATIONS  
THE FIT-OUT DESIGN AND DOCUMENTATION HAS BEEN COMPLETED ON THE BASIS OF FF&E AND EQUIPMENT ADVISED TO THIS OFFICE AT THE TIME OF BRIEFING THE DESIGN. THE DESIGN PROVISIONS FOR FF&E AND EQUIPMENT INCORPORATES SPATIAL ALLOCATIONS, SERVICING, LOADING AND ACCESS CLEARANCES AND WHERE APPROPRIATE SERVICES REQUIREMENTS, HAVING DUE REGARD FOR SURROUNDING FIXTURES AND FITTINGS. IT SHOULD BE NOTED THAT SUBSTITUTE FF&E OR EQUIPMENT WITH ALTERNATE SPECIFICATIONS SHOULD NOT BE PROCURED PRIOR TO VALIDATING THOSE SPECIFICATIONS AGAINST THE ITEM CONTROL, SCHEDULE AND DESIGN PROVISIONS IN THE MODEL. THIS OFFICE ACCEPTS NO RESPONSIBILITY FOR THE PROCUREMENT OF SUBSTITUTE FF&E AND EQUIPMENT WHICH HAS NOT BEEN REVIEWED AND VALIDATED AGAINST THE ORIGINAL DESIGN PROVISIONS.

**SERVICE POINTS DISCLAIMER**  
THE SERVICE POINTS IDENTIFIED ON THESE DRAWINGS HAVE BEEN OVERLAYED FROM THE BUILDING SERVICES ENGINEERING MODEL, AND ARE PROVIDED FOR INFORMATION AND SET-OUT PURPOSES ONLY. WE HAVE BEEN ADVISED BY THE SERVICES ENGINEERS THAT THE POINTS REPRESENTED ON THESE DRAWINGS ARE CORRECT AT THE TIME OF PUBLICATION. THIS OFFICE DOES NOT WARRANT THE ACCURACY OF THE DATA. REFER TO THE BUILDING SERVICES ENGINEERING DOCUMENTATION FOR THE INSTALLATION OF THE SERVICES POINTS, AND THE INTERFACE BETWEEN THE SERVICES POINTS AND THE RESPECTIVE ENGINEERING SYSTEMS.

ARCHITECTS

**STH**

**BATESSMART.**

ABN: 21 134 476 065  
LEVEL 4, 89 YORK STREET  
SYDNEY NSW 2000, AUSTRALIA  
PH: (02) 8299 4600 FAX: (03) 9885 2455  
E: syd@batesmart.com.au

43 BRISBANE STREET,  
SURRY HILLS, NSW 2010  
ABN: 68 094 740 986 PH: (02) 8354 5100  
E: syd@batesmart.com.au

THIS ARCHITECTURAL DESIGN IS THE COPYRIGHT OF SILVER THOMAS HANLEY AND BATES SMART AND SHALL NOT BE REPRODUCED WITHOUT THEIR WRITTEN PERMISSION

PROJECT MANAGER

**TSA**  
MANAGEMENT

CLIENT

**NSW**  
GOVERNMENT

**Health**  
Infrastructure

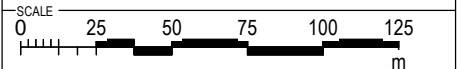
**Health**  
Northern NSW  
Local Health District

PROJECT

**TWEED VALLEY HOSPITAL**  
771 Cudgen Road, Cudgen

DRAWING TITLE

**STAGE 1 EARLY AND ENABLING WORKS CONSTRUCTION GENERAL ARRANGEMENT**



SCALE 1:2500@A3

DATE 11/09/2019

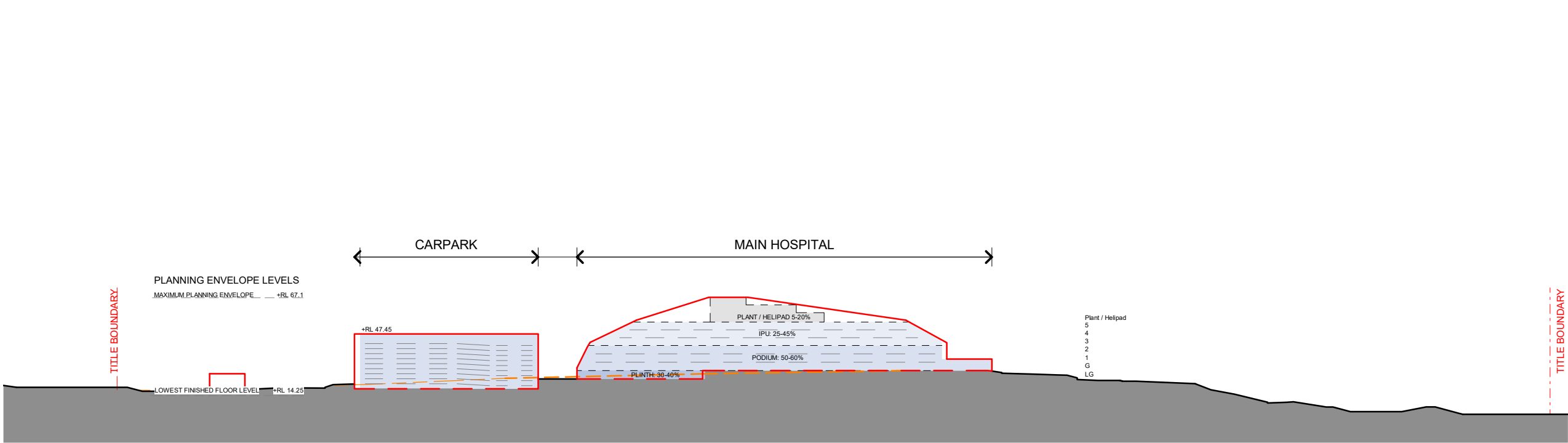
DRAWN BY SL

CHECKED AB

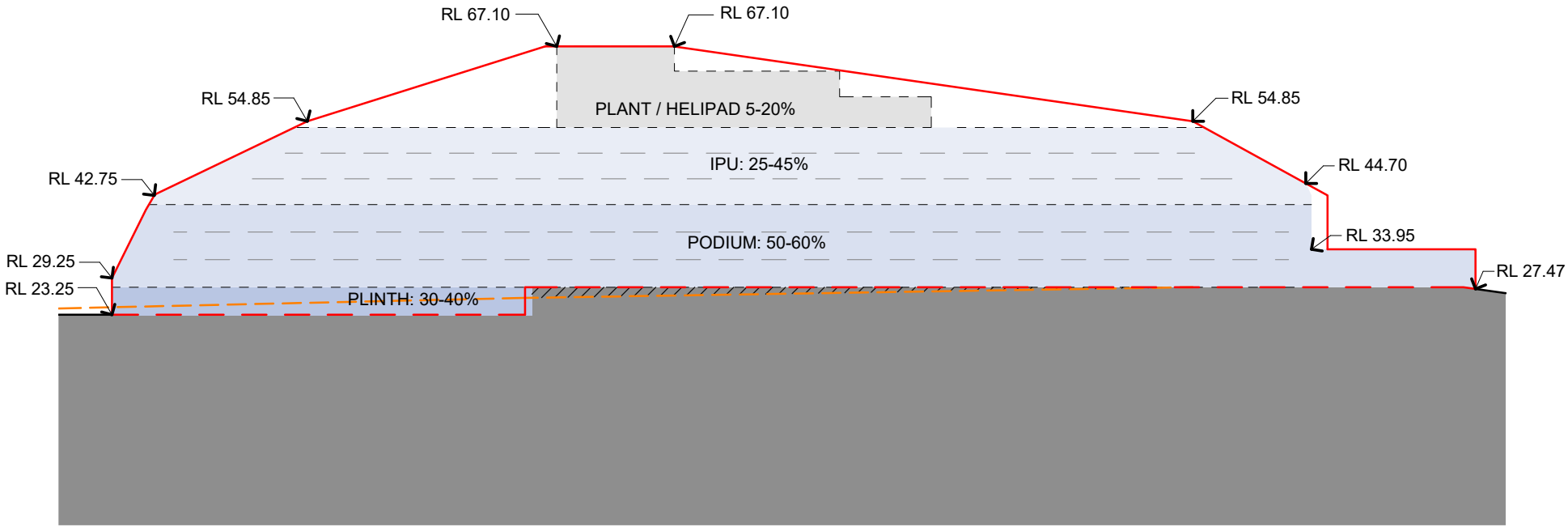
PROJECT No 10363.00

DRAWING No AR-SKE-10-110

REVISION 07



**SOUTH-EAST ELEVATION**  
SCALE 1:2500



**SOUTH-EAST ELEVATION CALLOUT**  
SCALE 1:1000

MAXIMUM PLANNING ENVELOPE ABOVE GROUND LEVEL

MAXIMUM PLANNING ENVELOPE BELOW GROUND LEVEL

NATURAL GROUND LINE

GROUND LINE

ANTICIPATED DENSITY OF ENVELOPE

PLINTH - 30-40%

PODIUM - 50-60%

IPU - 25-45%

PLANT - 5-20%

NOTE: MAXIMUM ENVELOPE DOES NOT REPRESENT BUILDING FORMS. The **Maximum Planning Envelope** describes the height, width and breadth limits of the proposed building forms. It is to be construed that the maximum planning envelope extends to interface with the existing natural ground level (and capturing basement levels and associated substructure) or modified natural ground level. The **Maximum Planning Envelope** excludes secondary architectural features including as examples, glazed canopies, unenclosed covered walkways, building services, hard landscaping, flag poles, lighting poles, fencing and wayfinding signage or the like, which will occur beyond the boundary of the **Maximum Planning Envelope**

REV	DESCRIPTION	DATE
08	ISSUED FOR INFORMATION	02/05/2019
09	ISSUED FOR INFORMATION	11/09/2019

COPYRIGHT

ALL RIGHTS RESERVED. THIS WORK IS COPYRIGHT AND CANNOT BE REPRODUCED OR COPIED IN ANY FORM OR BY ANY MEANS (GRAPHIC, ELECTRONIC OR MECHANICAL, INCLUDING PHOTOCOPYING) WITHOUT THE WRITTEN PERMISSION OF THE PRINCIPAL UNDER THE TERMS OF THE CONTRACT. ANY LICENCE, EXPRESS OR IMPLIED, TO USE THE DOCUMENT FOR ANY PURPOSE WHATSOEVER IS RESTRICTED TO THE TERMS OF THE AGREEMENT OR IMPLIED AGREEMENT WITH THE PRINCIPAL UNDER THE TERMS OF THE CONTRACT.

DIMENSIONS

USE FIGURED DIMENSIONS, DO NOT SCALE. CONTRACTORS MUST VERIFY ALL DIMENSIONS ON THE SITE BEFORE COMMENCING ANY WORK OR MAKING ANY SHOP DRAWING WHICH MUST BE SUBMITTED AND REVIEWED BEFORE MANUFACTURE.

FIXTURES, FITTINGS & EQUIPMENT SPECIFICATIONS

SUBSTITUTE FF&E EQUIPMENT SPECIFICATIONS  
THE FIT-OUT DESIGN AND DOCUMENTATION HAS BEEN COMPLETED ON THE BASIS OF FF&E AND EQUIPMENT ADVISED TO THIS OFFICE AT THE TIME OF BRIEFING THE DESIGN. THE DESIGN PROVISIONS FOR FF&E AND EQUIPMENT INCORPORATES SPATIAL ALLOCATIONS, SERVICING, LOADING AND ACCESS CLEARANCES AND WHERE APPROPRIATE SERVICES REQUIREMENTS, HAVING DUE REGARD FOR SURROUNDING FIXTURES AND FITTINGS. IT SHOULD BE NOTED THAT SUBSTITUTE FF&E OR EQUIPMENT WITH ALTERNATE SPECIFICATIONS SHOULD NOT BE PROCURED PRIOR TO VALIDATING THOSE SPECIFICATIONS AGAINST THE ITEM CONTROL, SCHEDULE AND DESIGN PROVISIONS IN THE MODEL. THIS OFFICE ACCEPTS NO RESPONSIBILITY FOR THE PROCUREMENT OF SUBSTITUTE FF&E AND EQUIPMENT WHICH HAS NOT BEEN REVIEWED AND VALIDATED AGAINST THE ORIGINAL DESIGN PROVISIONS.

SERVICE POINTS DISCLAIMER

THE SERVICE POINTS IDENTIFIED ON THESE DRAWINGS HAVE BEEN OVERLAYED FROM THE BUILDING SERVICES ENGINEERING MODEL, AND ARE PROVIDED FOR INFORMATION AND SET-OUT PURPOSES ONLY. WE HAVE BEEN ADVISED BY THE SERVICES ENGINEERS THAT THE POINTS REPRESENTED ON THESE DRAWINGS ARE CORRECT AT THE TIME OF PUBLICATION. THIS OFFICE DOES NOT WARRANT THE ACCURACY OF THIS DATA. REFER TO THE BUILDING SERVICES ENGINEERING DOCUMENTATION FOR THE INSTALLATION OF THE SERVICES POINTS, AND THE INTERFACE BETWEEN THE SERVICES POINTS AND THE RESPECTIVE ENGINEERING SYSTEMS.

ARCHITECTS

STH

BATESSMART.

ABN: 21 134 476 065  
LEVEL 4, 89 YORK STREET  
SYDNEY NSW 2000, AUSTRALIA  
PH: (02) 8299 4600 FAX: (03) 9885 2455  
E: syd@batesmart.com.au

43 BRISBANE STREET,  
SURRY HILLS, NSW 2010  
ABN: 68 094 740 986 PH: (02) 8354 5100  
E: syd@batesmart.com.au

THIS ARCHITECTURAL DESIGN IS THE COPYRIGHT OF SILVER THOMAS HANLEY AND BATES SMART AND SHALL NOT BE REPRODUCED WITHOUT THEIR WRITTEN PERMISSION

PROJECT MANAGER

TSA

MANAGEMENT

CLIENT

NSW GOVERNMENT

Health Infrastructure

Health Northern NSW Local Health District

PROJECT

TWEED VALLEY HOSPITAL

771 Cudgen Road, Cudgen

DRAWING TITLE

SOUTH-EAST ELEVATION HOSPITAL

SCALE

0 40 80 120 160 200

m

SCALE

As indicated @ A3

DATE 11/09/2019

DRAWN BY SL

CHECKED AB

DRAWING No

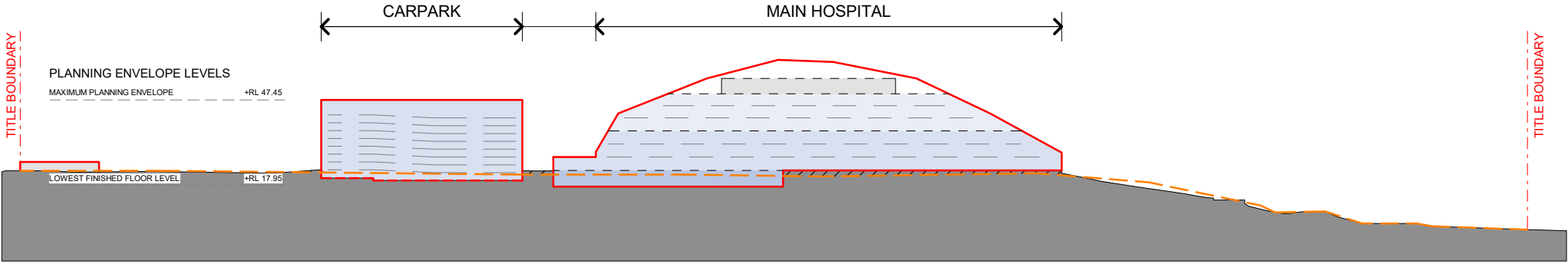
10363.00

AR-SKE-50-101

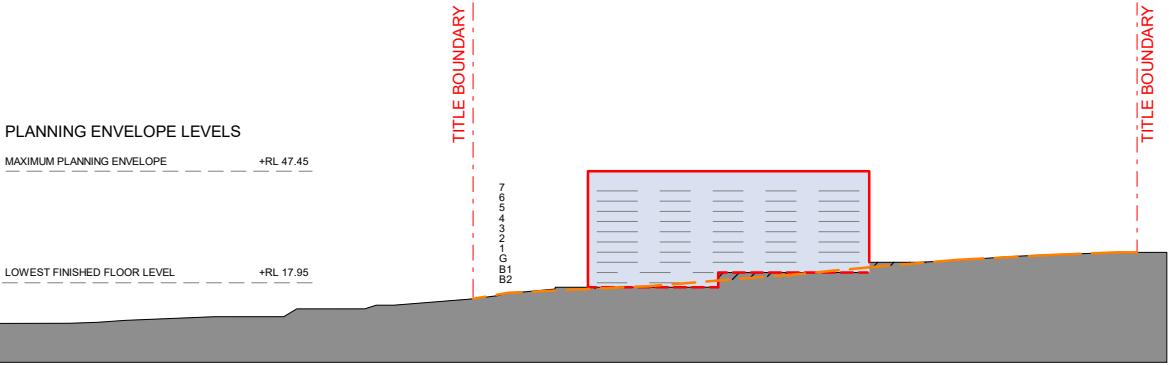
REVISION

09

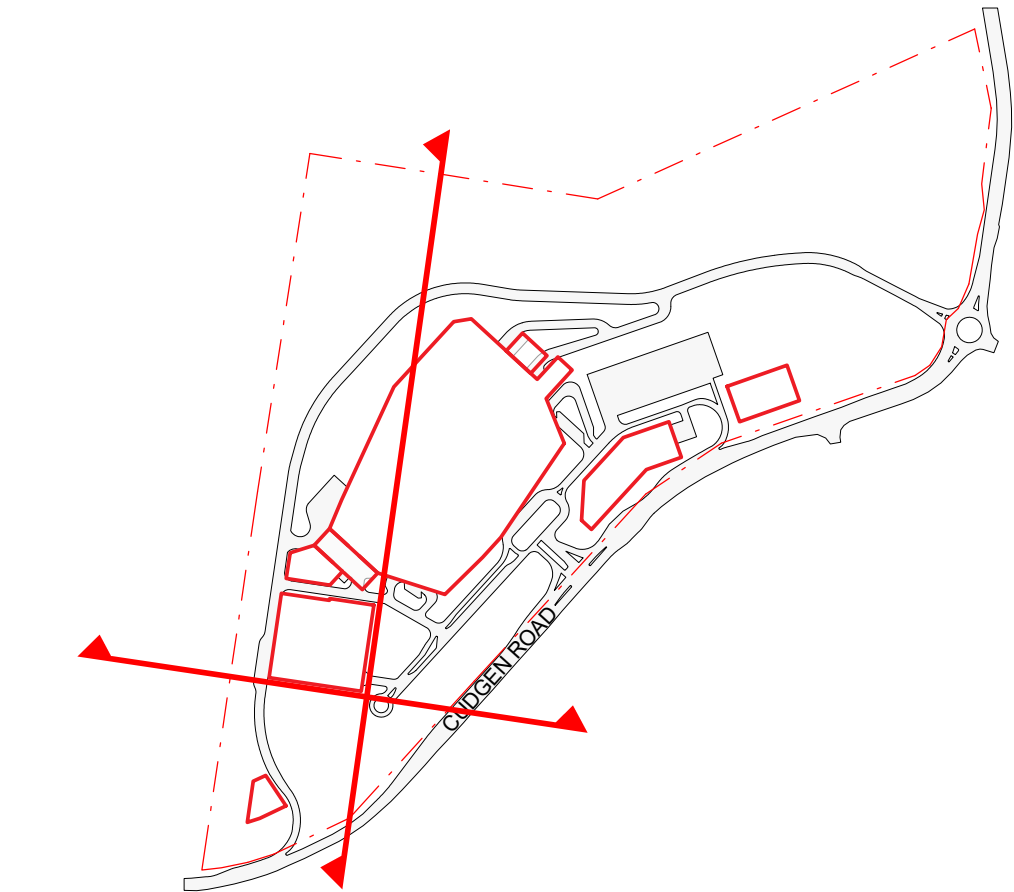
BIM 360/Tweed Valley Hospital/TVH\_BUILDING\_A18.rvt



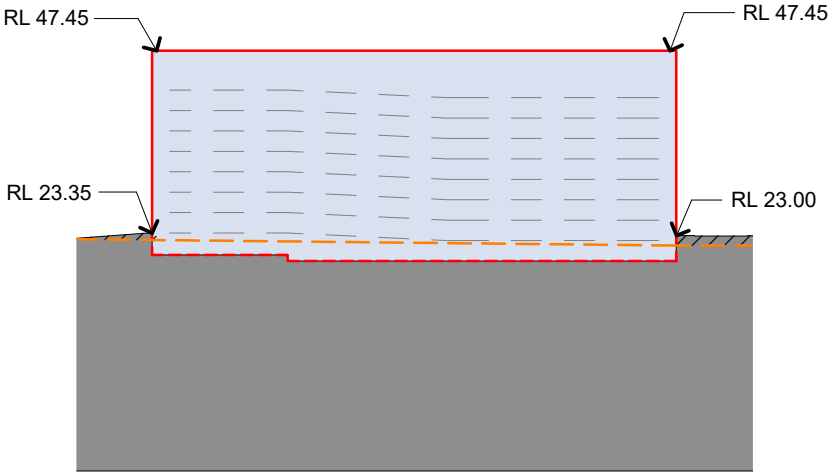
**SOUTH-EAST ELEVATION - CAR PARK**  
SCALE 1:2000



**SOUTH-WEST ELEVATION - CAR PARK**  
SCALE 1:2000



**SOUTH-WEST ELEVATION CALL OUT - CAR PARK**  
SCALE 1:1000



**SOUTH-EAST ELEVATION CALL OUT - CAR PARK**  
SCALE 1:1000

MAXIMUM PLANNING ENVELOPE ABOVE GROUND LEVEL

MAXIMUM PLANNING ENVELOPE BELOW GROUND LEVEL

NATURAL GROUND LINE

GROUND LINE

ANTICIPATED DENSITY OF ENVELOPE

PLINTH - 30-40%

PODIUM - 50-60%

IPU - 25-45%

PLANT - 5-20%

NOTE: MAXIMUM ENVELOPE DOES NOT REPRESENT BUILDING FORMS. The **Maximum Planning Envelope** describes the height, width and breadth limits of the proposed building forms. It is to be construed that the maximum planning envelope extends to interface with the existing natural ground level (and capturing basement levels and associated substructure) or modified natural ground level. The **Maximum Planning Envelope** excludes secondary architectural features including as examples: glazed canopies, unenclosed covered walkways, building services, hard landscaping, flag poles, lighting poles, fencing and wayfinding signage or the like, which will occur beyond the boundary of the **Maximum Planning Envelope**

REV	DESCRIPTION	DATE
01	ISSUED FOR INFORMATION	11/09/2019

COPYRIGHT

ALL RIGHTS RESERVED. THIS WORK IS COPYRIGHT AND CANNOT BE REPRODUCED OR COPIED IN ANY FORM OR BY ANY MEANS (GRAPHIC, ELECTRONIC OR MECHANICAL, INCLUDING PHOTOCOPYING) WITHOUT THE WRITTEN PERMISSION OF THE PRINCIPAL. UNDER THE TERMS OF THE CONTRACT, ANY LICENCE, EXPRESS OR IMPLIED, TO USE THE DOCUMENT FOR ANY PURPOSE WHATSOEVER IS RESTRICTED TO THE TERMS OF THE AGREEMENT OR IMPLIED AGREEMENT WITH THE PRINCIPAL UNDER THE TERMS OF THE CONTRACT.

DIMENSIONS

USE FIGURED DIMENSIONS, DO NOT SCALE. CONTRACTORS MUST VERIFY ALL DIMENSIONS ON THE SITE BEFORE COMMENCING ANY WORK OR MAKING ANY SHOP DRAWING WHICH MUST BE SUBMITTED AND REVIEWED BEFORE MANUFACTURE.

FIXTURES, FITTINGS & EQUIPMENT SPECIFICATIONS

SUBSTITUTE FF&E EQUIPMENT SPECIFICATIONS  
THE FIT-OUT DESIGN AND DOCUMENTATION HAS BEEN COMPLETED ON THE BASIS OF FF&E AND EQUIPMENT ADVISED TO THIS OFFICE AT THE TIME OF BRIEFING THE DESIGN. THE DESIGN PROVISIONS FOR FF&E AND EQUIPMENT INCORPORATES SPATIAL ALLOCATIONS, SERVICES, LOADING AND ACCESS CLEARANCES AND WHERE APPROPRIATE SERVICES REQUIREMENTS, HAVING DUE REGARD FOR SURROUNDING FIXTURES AND FITTINGS. IT SHOULD BE NOTED THAT SUBSTITUTE FF&E OR EQUIPMENT WITH ALTERNATE SPECIFICATIONS SHOULD NOT BE PROCURED PRIOR TO VALIDATING THOSE SPECIFICATIONS AGAINST THE ITEM CONTROL SCHEDULE AND DESIGN PROVISIONS IN THE MODEL. THIS OFFICE ACCEPTS NO RESPONSIBILITY FOR THE PROCUREMENT OF SUBSTITUTE FF&E AND EQUIPMENT WHICH HAS NOT BEEN REVIEWED AND VALIDATED AGAINST THE ORIGINAL DESIGN PROVISIONS.

SERVICE POINTS DISCLAIMER

THE SERVICE POINTS IDENTIFIED ON THESE DRAWINGS HAVE BEEN OVERLAYED FROM THE BUILDING SERVICES ENGINEERING MODEL, AND ARE PROVIDED FOR INFORMATION AND SET-OUT PURPOSES ONLY. WE HAVE BEEN ADVISED BY THE SERVICES ENGINEERS THAT THE POINTS REPRESENTED ON THESE DRAWINGS ARE CORRECT AT THE TIME OF PUBLICATION. THIS OFFICE DOES NOT WARRANT THE ACCURACY OF THIS DATA. REFER TO THE BUILDING SERVICES ENGINEERING DOCUMENTATION FOR THE INSTALLATION OF THE SERVICES POINTS, AND THE INTERFACE BETWEEN THE SERVICES POINTS AND THE RESPECTIVE ENGINEERING SYSTEMS.

ARCHITECTS

STH

BATESSMART.

ABN: 21 134 476 065  
LEVEL 4, 89 YORK STREET  
SYDNEY NSW 2000, AUSTRALIA  
PH: (02) 8299 4600 FAX: (03) 9885 2455  
E: syd@batesmart.com.au

43 BRISBANE STREET,  
SURRY HILLS, NSW 2010  
ABN: 68 094 740 986 PH: (02) 8354 5100  
E: syd@batesmart.com.au

THIS ARCHITECTURAL DESIGN IS THE COPYRIGHT OF SILVER THOMAS HANLEY AND BATES SMART AND SHALL NOT BE REPRODUCED WITHOUT THEIR WRITTEN PERMISSION

PROJECT MANAGER

TSA

MANAGEMENT

CLIENT

NSW

GOVERNMENT

Health

Infrastructure

Health

Northern NSW

Local Health District

PROJECT

TWEED VALLEY HOSPITAL

771 Cudgen Road, Cudgen

DRAWING TITLE

SOUTH ELEVATIONS

MULTI-DECK CARPARK

SCALE

0

40

80

120

160

200

m

SCALE

As

indicated@A3

DATE

11/09/2019

DRAWN BY

MD

CHECKED

BS

PROJECT No

10363.00

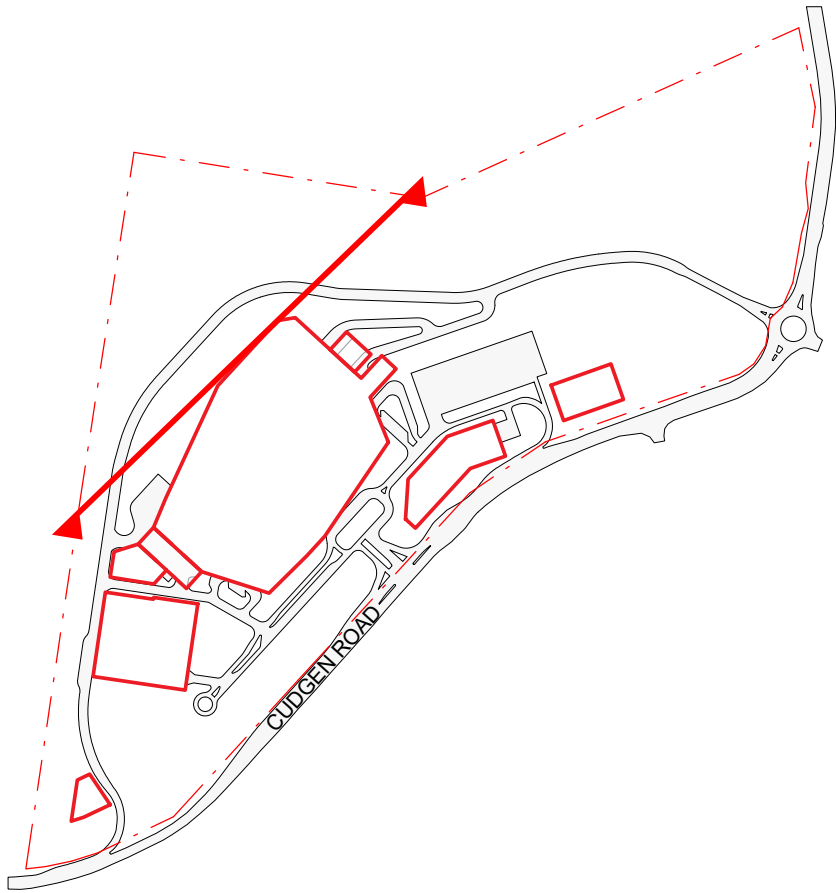
DRAWING No

AR-SKE-50-110

REVISION

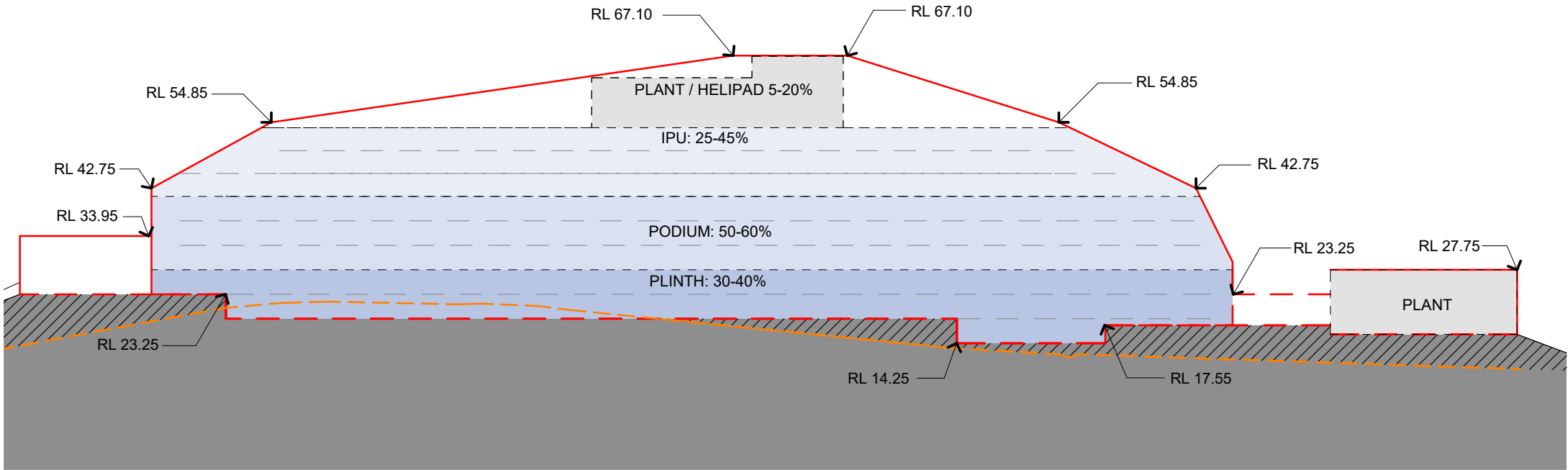
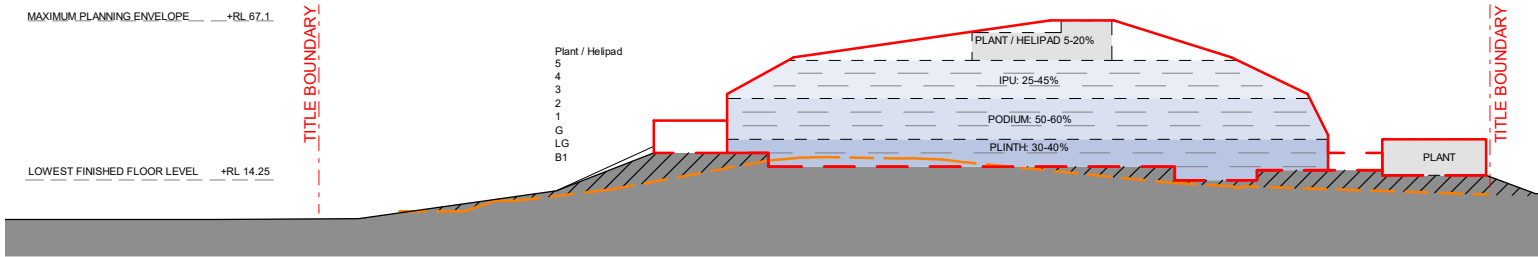
01

BIM 360/Tweed Valley Hospital/TVH\_BUILDING\_A18.rvt



PLANNING ENVELOPE LEVELS  
MAXIMUM PLANNING ENVELOPE — +RL 67.1  
LOWEST FINISHED FLOOR LEVEL — +RL 14.25

**NORTH-WEST ELEVATION**  
SCALE 1:2500



**NORTH-WEST ELEVATION CALLOUT**  
SCALE 1:1000

MAXIMUM PLANNING ENVELOPE ABOVE GROUND LEVEL

MAXIMUM PLANNING ENVELOPE BELOW GROUND LEVEL

NATURAL GROUND LINE

GROUND LINE

ANTICIPATED DENSITY OF ENVELOPE

PLINTH - 30-40%

PODIUM - 50-60%

IPU - 25-45%

PLANT - 5-20%

NOTE: MAXIMUM ENVELOPE DOES NOT REPRESENT BUILDING FORMS. The **Maximum Planning Envelope** describes the height, width and breadth limits of the proposed building forms. It is to be construed that the maximum planning envelope extends to interface with the existing natural ground level (and capturing basement levels and associated substructure) or modified natural ground level. The **Maximum Planning Envelope** excludes secondary architectural features including as examples; glazed canopies, unenclosed covered walkways, building services, hard landscaping, flag poles, lighting poles, fencing and wayfinding signage or the like, which will occur beyond the boundary of the **Maximum Planning Envelope**

REV	DESCRIPTION	DATE
08	ISSUED FOR INFORMATION	02/05/2019
09	ISSUED FOR INFORMATION	11/09/2019

COPYRIGHT

ALL RIGHTS RESERVED. THIS WORK IS COPYRIGHT AND CANNOT BE REPRODUCED OR COPIED IN ANY FORM OR BY ANY MEANS (GRAPHIC, ELECTRONIC OR MECHANICAL, INCLUDING PHOTOCOPYING) WITHOUT THE WRITTEN PERMISSION OF THE PRINCIPAL UNDER THE TERMS OF THE CONTRACT. ANY LICENCE, EXPRESS OR IMPLIED, TO USE THE DOCUMENT FOR ANY PURPOSE WHATSOEVER IS RESTRICTED TO THE TERMS OF THE AGREEMENT OR IMPLIED AGREEMENT WITH THE PRINCIPAL UNDER THE TERMS OF THE CONTRACT.

DIMENSIONS

USE FIGURED DIMENSIONS, DO NOT SCALE. CONTRACTORS MUST VERIFY ALL DIMENSIONS ON THE SITE BEFORE COMMENCING ANY WORK OR MAKING ANY SHOP DRAWING WHICH MUST BE SUBMITTED AND REVIEWED BEFORE MANUFACTURE.

FIXTURES, FITTINGS & EQUIPMENT SPECIFICATIONS

SUBSTITUTE FF&E EQUIPMENT SPECIFICATIONS  
THE FIT-OUT DESIGN AND DOCUMENTATION HAS BEEN COMPLETED ON THE BASIS OF FF&E AND EQUIPMENT ADVISED TO THIS OFFICE AT THE TIME OF BRIEFING THE DESIGN. THE DESIGN PROVISIONS FOR FF&E AND EQUIPMENT INCORPORATES SPATIAL ALLOCATIONS, SERVICING, LOADING AND ACCESS CLEARANCES AND WHERE APPROPRIATE SERVICES REQUIREMENTS, HAVING DUE REGARD FOR SURROUNDING FIXTURES AND FITTINGS. IT SHOULD BE NOTED THAT SUBSTITUTE FF&E OR EQUIPMENT WITH ALTERNATE SPECIFICATIONS SHOULD NOT BE PROCURED PRIOR TO VALIDATING THOSE SPECIFICATIONS AGAINST THE ITEM CONTROL, SCHEDULE AND DESIGN PROVISIONS IN THE MODEL. THIS OFFICE ACCEPTS NO RESPONSIBILITY FOR THE PROCUREMENT OF SUBSTITUTE FF&E AND EQUIPMENT WHICH HAS NOT BEEN REVIEWED AND VALIDATED AGAINST THE ORIGINAL DESIGN PROVISIONS.

SERVICE POINTS DISCLAIMER

THE SERVICE POINTS IDENTIFIED ON THESE DRAWINGS HAVE BEEN OVERLAYED FROM THE BUILDING SERVICES ENGINEERING MODEL, AND ARE PROVIDED FOR INFORMATION AND SET-OUT PURPOSES ONLY. WE HAVE BEEN ADVISED BY THE SERVICES ENGINEERS THAT THE POINTS REPRESENTED ON THESE DRAWINGS ARE CORRECT AT THE TIME OF PUBLICATION. THIS OFFICE DOES NOT WARRANT THE ACCURACY OF THIS DATA. REFER TO THE BUILDING SERVICES ENGINEERING DOCUMENTATION FOR THE INSTALLATION OF THE SERVICES POINTS, AND THE INTERFACE BETWEEN THE SERVICES POINTS AND THE RESPECTIVE ENGINEERING SYSTEMS.

ARCHITECTS

STH

BATESSMART.

ABN: 21 134 476 065  
LEVEL 4, 89 YORK STREET  
SYDNEY NSW 2000, AUSTRALIA  
PH: (02) 8299 4600 FAX: (03) 9885 2455  
E: syd@batesmart.com.au

43 BRISBANE STREET,  
SURRY HILLS, NSW 2010  
ABN: 68 094 740 986 PH: (02) 8354 5100  
E: syd@batesmart.com.au

THIS ARCHITECTURAL DESIGN IS THE COPYRIGHT OF SILVER THOMAS HANLEY AND BATES SMART AND SHALL NOT BE REPRODUCED WITHOUT THEIR WRITTEN PERMISSION

PROJECT MANAGER

TSA

MANAGEMENT

CLIENT

NSW

GOVERNMENT

Health

Infrastructure

Health

Northern NSW

Local Health District

PROJECT

TWEED VALLEY HOSPITAL

771 Cudgen Road, Cudgen

DRAWING TITLE

NORTH-WEST ELEVATION

HOSPITAL

SCALE

0 40 80 120 160 200

m

SCALE

As indicated @ A3

DATE

11/09/2019

DRAWN BY

SL

CHECKED

AB

INDICATED @ A3

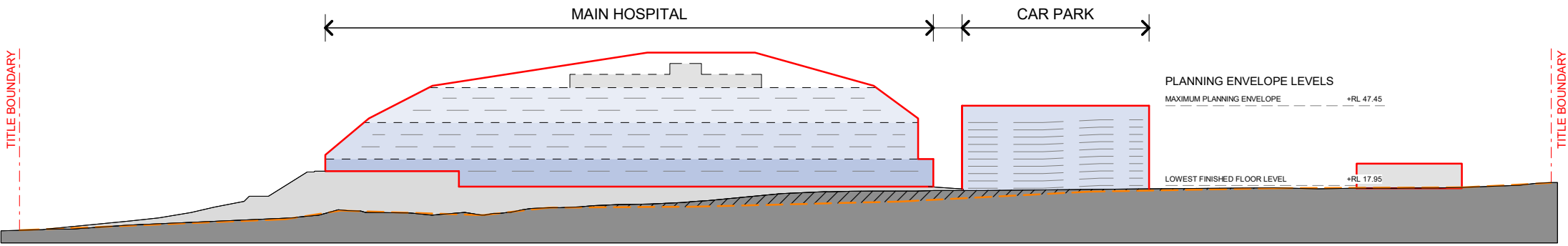
10363.00

AR-SKE-50-201

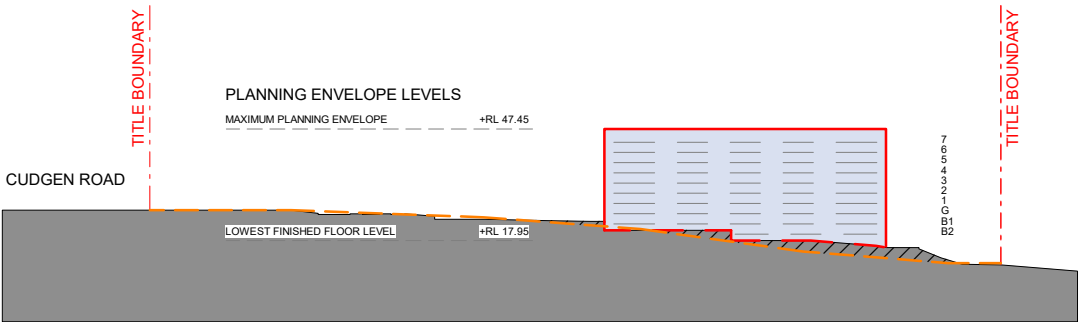
09

BIM 360/Tweed Valley Hospital/TVH\_BUILDING\_A18.rvt

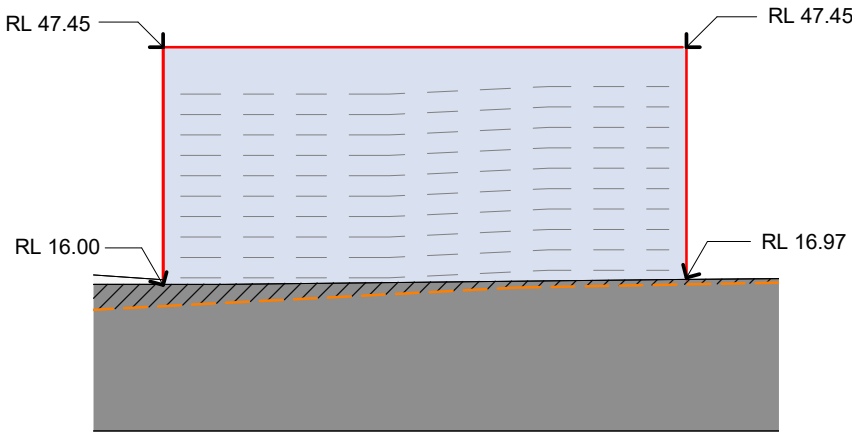
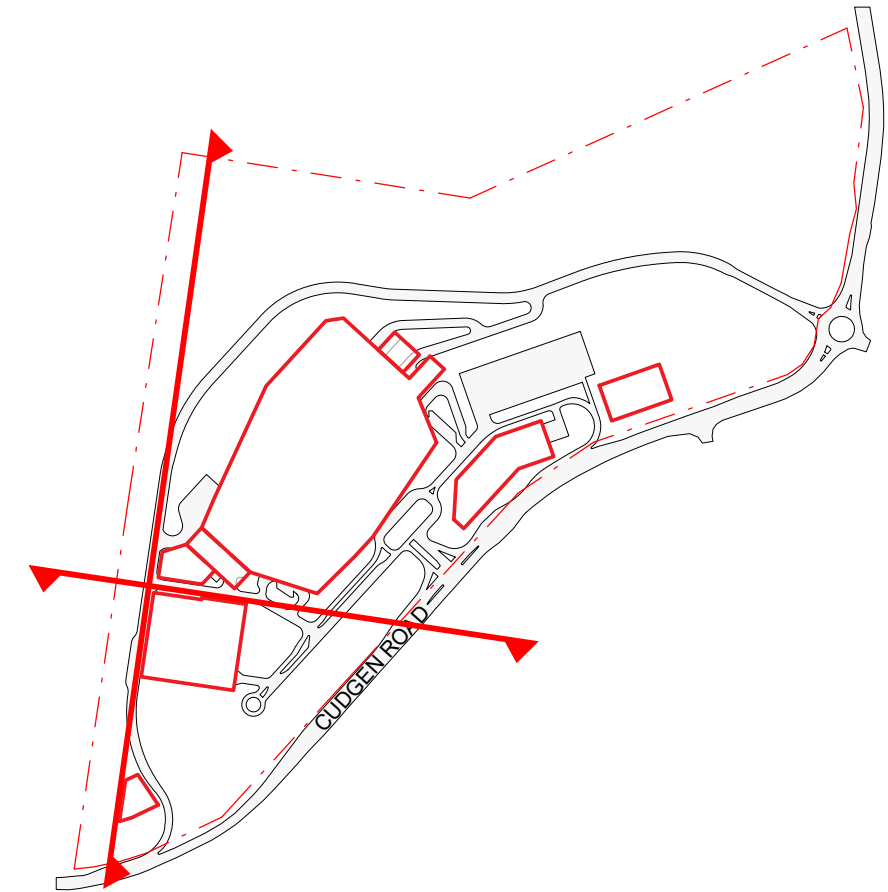




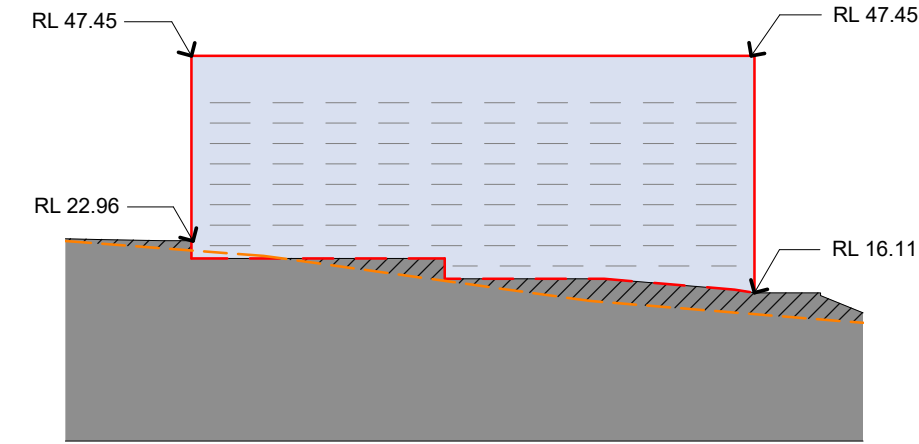
**NORTH-WEST ELEVATION - CAR PARK**  
SCALE 1:2000



**NORTH-EAST ELEVATION - CAR PARK**  
SCALE 1:2000



**NORTH-WEST ELEVATION CALL OUT - CAR PARK**  
SCALE 1:1000



**NORTH-EAST ELEVATION CALL OUT - CAR PARK**  
SCALE 1:1000

MAXIMUM PLANNING ENVELOPE ABOVE GROUND LEVEL

MAXIMUM PLANNING ENVELOPE BELOW GROUND LEVEL

NATURAL GROUND LINE

GROUND LINE

**ANTICIPATED DENSITY OF ENVELOPE**

PLINTH - 30-40%

PODIUM - 50-60%

IPU - 25-45%

PLANT - 5-20%

NOTE: MAXIMUM ENVELOPE DOES NOT REPRESENT BUILDING FORMS. The **Maximum Planning Envelope** describes the height, width and breadth limits of the proposed building forms. It is to be construed that the maximum planning envelope extends to interface with the existing natural ground level (and capturing basement levels and associated substructure) or modified natural ground level. The **Maximum Planning Envelope** excludes secondary architectural features including as examples; glazed canopies, unenclosed covered walkways, building services, hard landscaping, flag poles, lighting poles, fencing and wayfinding signage or the like, which will occur beyond the boundary of the **Maximum Planning Envelope**

REV	DESCRIPTION	DATE
01	ISSUED FOR INFORMATION	11/09/2019

**COPYRIGHT**  
ALL RIGHTS RESERVED. THIS WORK IS COPYRIGHT AND CANNOT BE REPRODUCED OR COPIED IN ANY FORM OR BY ANY MEANS (GRAPHIC, ELECTRONIC OR MECHANICAL, INCLUDING PHOTOCOPYING) WITHOUT THE WRITTEN PERMISSION OF THE PRINCIPAL. UNDER THE TERMS OF THE CONTRACT, ANY LICENCE, EXPRESS OR IMPLIED, TO USE THE DOCUMENT FOR ANY PURPOSE WHATSOEVER IS RESTRICTED TO THE TERMS OF THE AGREEMENT OR IMPLIED AGREEMENT WITH THE PRINCIPAL UNDER THE TERMS OF THE CONTRACT.

**DIMENSIONS**  
USE FIGURED DIMENSIONS, DO NOT SCALE. CONTRACTORS MUST VERIFY ALL DIMENSIONS ON THE SITE BEFORE COMMENCING ANY WORK OR MAKING ANY SHOP DRAWING WHICH MUST BE SUBMITTED AND REVIEWED BEFORE MANUFACTURE.

**FIXTURES, FITTINGS & EQUIPMENT SPECIFICATIONS**  
SUBSTITUTE FF&E EQUIPMENT SPECIFICATIONS  
THE FIT-OUT DESIGN AND DOCUMENTATION HAS BEEN COMPLETED ON THE BASIS OF FF&E AND EQUIPMENT ADVISED TO THIS OFFICE AT THE TIME OF BRIEFING THE DESIGN. THE DESIGN PROVISIONS FOR FF&E AND EQUIPMENT INCORPORATES SPATIAL ALLOCATIONS, SERVICES, LOADING AND ACCESS CLEARANCES AND WHERE APPROPRIATE SERVICES REQUIREMENTS, HAVING DUE REGARD FOR SURROUNDING FIXTURES AND FITTINGS. IT SHOULD BE NOTED THAT SUBSTITUTE FF&E OR EQUIPMENT WITH ALTERNATE SPECIFICATIONS SHOULD NOT BE PROCURED PRIOR TO VALIDATING THOSE SPECIFICATIONS AGAINST THE ITEM CONTROL, SCHEDULE AND DESIGN PROVISIONS IN THE MODEL. THIS OFFICE ACCEPTS NO RESPONSIBILITY FOR THE PROCUREMENT OF SUBSTITUTE FF&E AND EQUIPMENT WHICH HAS NOT BEEN REVIEWED AND VALIDATED AGAINST THE ORIGINAL DESIGN PROVISIONS.

**SERVICE POINTS DISCLAIMER**  
THE SERVICE POINTS IDENTIFIED ON THESE DRAWINGS HAVE BEEN OVERLAYED FROM THE BUILDING SERVICES ENGINEERING MODEL, AND ARE PROVIDED FOR INFORMATION AND SET-OUT PURPOSES ONLY. WE HAVE BEEN ADVISED BY THE SERVICES ENGINEERS THAT THE POINTS REPRESENTED ON THESE DRAWINGS ARE CORRECT AT THE TIME OF PUBLICATION. THIS OFFICE DOES NOT WARRANT THE ACCURACY OF THIS DATA. REFER TO THE BUILDING SERVICES ENGINEERING DOCUMENTATION FOR THE INSTALLATION OF THE SERVICE POINTS, AND THE INTERFACE BETWEEN THE SERVICE POINTS AND THE RESPECTIVE ENGINEERING SYSTEMS.

ARCHITECTS

**STH**

**BATESSMART.**

ABN: 21 134 476 065  
LEVEL 4, 89 YORK STREET  
SYDNEY NSW 2000, AUSTRALIA  
PH: (02) 8299 4600 FAX: (03) 9885 2455

43 BRISBANE STREET,  
SURRY HILLS, NSW 2010  
ABN: 68 094 740 986 PH: (02) 8354 5100  
E: syd@batesmart.com.au

THIS ARCHITECTURAL DESIGN IS THE COPYRIGHT OF SILVER THOMAS HANLEY AND BATES SMART AND SHALL NOT BE REPRODUCED WITHOUT THEIR WRITTEN PERMISSION

PROJECT MANAGER

CLIENT

PROJECT

**TWEED VALLEY HOSPITAL**  
771 Cudgen Road, Cudgen

DRAWING TITLE

**NORTH ELEVATIONS**  
**MULTI-DECK CARPARK**

SCALE

0 40 80 120 160 200  
m

SCALE

As indicated@A3

DATE

11/09/2019

DRAWN BY

MD

CHECKED

BS

PROJECT No

10363.00

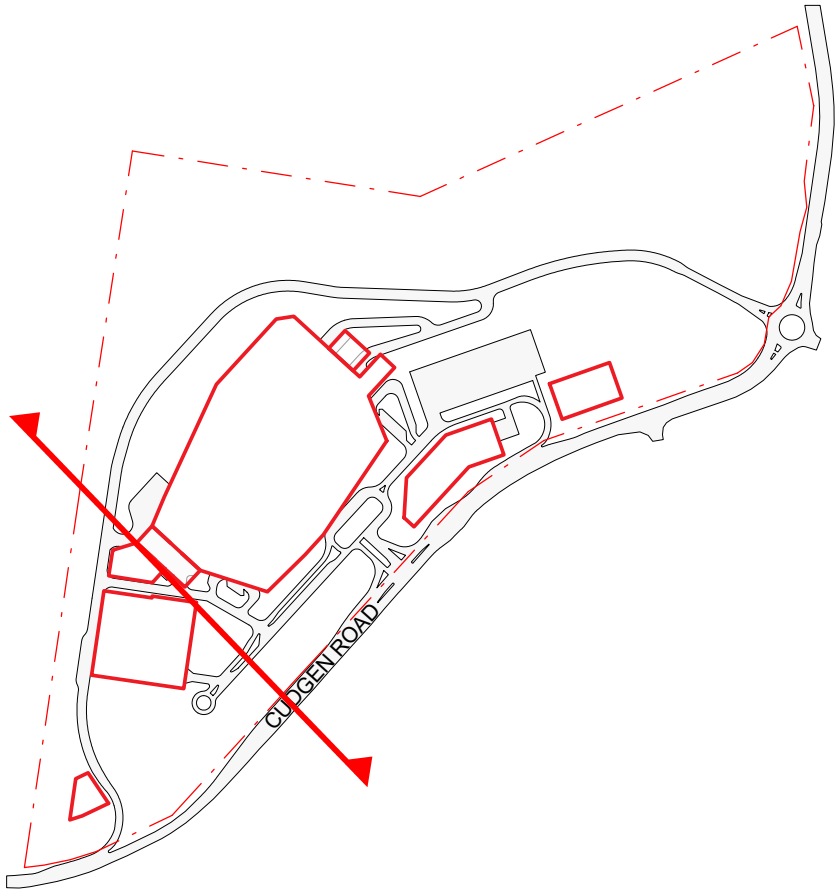
DRAWING No

AR-SKE-50-210

REVISION

01

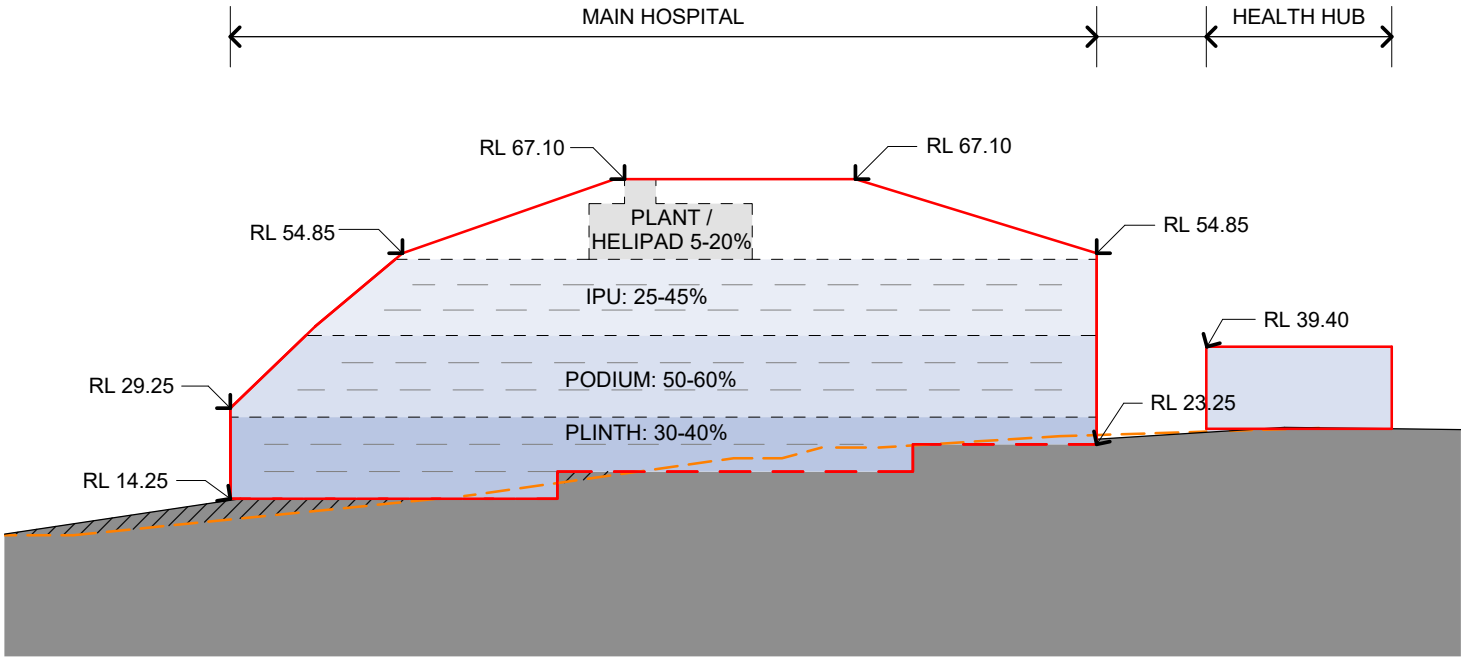
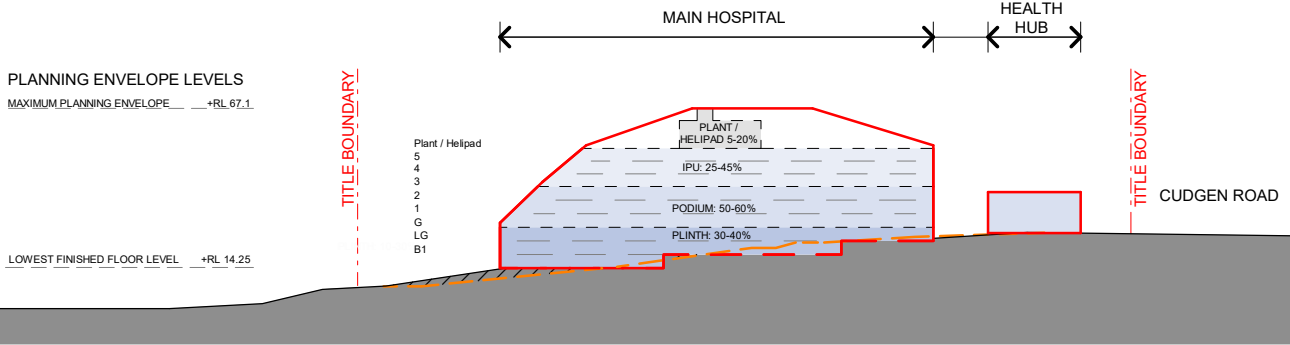
BIM 360/Tweed Valley Hospital/TVH\_BUILDING\_A18.rvt



PLANNING ENVELOPE LEVELS  
MAXIMUM PLANNING ENVELOPE +RL 67.1  
LOWEST FINISHED FLOOR LEVEL +RL 14.25

## SOUTH-WEST ELEVATION

SCALE 1:2500



## SOUTH-WEST ELEVATION CALLOUT

SCALE 1:1000

LEGEND

MAXIMUM PLANNING ENVELOPE ABOVE GROUND LEVEL

MAXIMUM PLANNING ENVELOPE BELOW GROUND LEVEL

NATURAL GROUND LINE

GROUND LINE

ANTICIPATED DENSITY OF ENVELOPE

PLINTH - 30-40%

PODIUM - 50-60%

IPU - 25-45%

PLANT - 5-20%

NOTE: MAXIMUM ENVELOPE DOES NOT REPRESENT BUILDING FORMS. The **Maximum Planning Envelope** describes the height, width and breadth limits of the proposed building forms. It is to be construed that the maximum planning envelope extends to interface with the existing natural ground level (and capturing basement levels and associated substructure) or modified natural ground level. The **Maximum Planning Envelope** excludes secondary architectural features including as examples; glazed canopies, unenclosed covered walkways, building services, hard landscaping, flag poles, lighting poles, fencing and wayfinding signage or the like, which will occur beyond the boundary of the **Maximum Planning Envelope**

REV	DESCRIPTION	DATE
08	ISSUED FOR INFORMATION	02/05/2019
09	ISSUED FOR INFORMATION	11/09/2019

COPYRIGHT

ALL RIGHTS RESERVED. THIS WORK IS COPYRIGHT AND CANNOT BE REPRODUCED OR COPIED IN ANY FORM OR BY ANY MEANS (GRAPHIC, ELECTRONIC OR MECHANICAL, INCLUDING PHOTOCOPYING) WITHOUT THE WRITTEN PERMISSION OF THE PRINCIPAL UNDER THE TERMS OF THE CONTRACT. ANY LICENCE, EXPRESS OR IMPLIED, TO USE THE DOCUMENT FOR ANY PURPOSE WHATSOEVER IS RESTRICTED TO THE TERMS OF THE AGREEMENT OR IMPLIED AGREEMENT WITH THE PRINCIPAL UNDER THE TERMS OF THE CONTRACT.

DIMENSIONS

USE FIGURED DIMENSIONS, **DO NOT SCALE**. CONTRACTORS MUST VERIFY ALL DIMENSIONS ON THE SITE BEFORE COMMENCING ANY WORK OR MAKING ANY SHOP DRAWING WHICH MUST BE SUBMITTED AND REVIEWED BEFORE MANUFACTURE.

FIXTURES, FITTINGS & EQUIPMENT SPECIFICATIONS

SUBSTITUTE FF&E EQUIPMENT SPECIFICATIONS  
THE FIT-OUT DESIGN AND DOCUMENTATION HAS BEEN COMPLETED ON THE BASIS OF FF&E AND EQUIPMENT ADVISED TO THIS OFFICE AT THE TIME OF BRIEFING THE DESIGN. THE DESIGN PROVISIONS FOR FF&E AND EQUIPMENT INCORPORATES SPATIAL ALLOCATIONS, SERVICING, LOADING AND ACCESS CLEARANCES AND WHERE APPROPRIATE SERVICES REQUIREMENTS, HAVING DUE REGARD FOR SURROUNDING FIXTURES AND FITTINGS. IT SHOULD BE NOTED THAT SUBSTITUTE FF&E OR EQUIPMENT WITH ALTERNATE SPECIFICATIONS SHOULD NOT BE PROCURED PRIOR TO VALIDATING THOSE SPECIFICATIONS AGAINST THE ITEM CONTROL SCHEDULE AND DESIGN PROVISIONS IN THE MODEL. THIS OFFICE ACCEPTS NO RESPONSIBILITY FOR THE PROCUREMENT OF SUBSTITUTE FF&E AND EQUIPMENT WHICH HAS NOT BEEN REVIEWED AND VALIDATED AGAINST THE ORIGINAL DESIGN PROVISIONS.

SERVICE POINTS DISCLAIMER

THE SERVICE POINTS IDENTIFIED ON THESE DRAWINGS HAVE BEEN OVERLAYED FROM THE BUILDING SERVICES ENGINEERING MODEL, AND ARE PROVIDED FOR INFORMATION AND SET-OUT PURPOSES ONLY. WE HAVE BEEN ADVISED BY THE SERVICES ENGINEERS THAT THE POINTS REPRESENTED ON THESE DRAWINGS ARE CORRECT AT THE TIME OF PUBLICATION. THIS OFFICE DOES NOT WARRANT THE ACCURACY OF THIS DATA. REFER TO THE BUILDING SERVICES ENGINEERING DOCUMENTATION FOR THE INSTALLATION OF THE SERVICES POINTS, AND THE INTERFACE BETWEEN THE SERVICES POINTS AND THE RESPECTIVE ENGINEERING SYSTEMS.

ARCHITECTS

STH

BATESSMART.

ABN: 21 134 476 065  
LEVEL 4, 89 YORK STREET  
SYDNEY NSW 2000, AUSTRALIA  
PH: (02) 8299 4600 FAX: (03) 9885 2455

43 BRISBANE STREET,  
SURRY HILLS, NSW 2010  
ABN: 68 094 740 986 PH: (02) 8354 5100  
E: syd@batesmart.com.au

THIS ARCHITECTURAL DESIGN IS THE COPYRIGHT OF SILVER THOMAS HANLEY AND BATES SMART AND SHALL NOT BE REPRODUCED WITHOUT THEIR WRITTEN PERMISSION

PROJECT MANAGER

TSA

MANAGEMENT

CLIENT

NSW GOVERNMENT

Health Infrastructure

Health Northern NSW Local Health District

PROJECT

TWEED VALLEY HOSPITAL

771 Cudgen Road, Cudgen

DRAWING TITLE

SOUTH-WEST ELEVATION

HOSPITAL

SCALE

0 40 80 120 160 200

m

SCALE

As indicated @ A3

DATE 11/09/2019

DRAWN BY SL

CHECKED AB

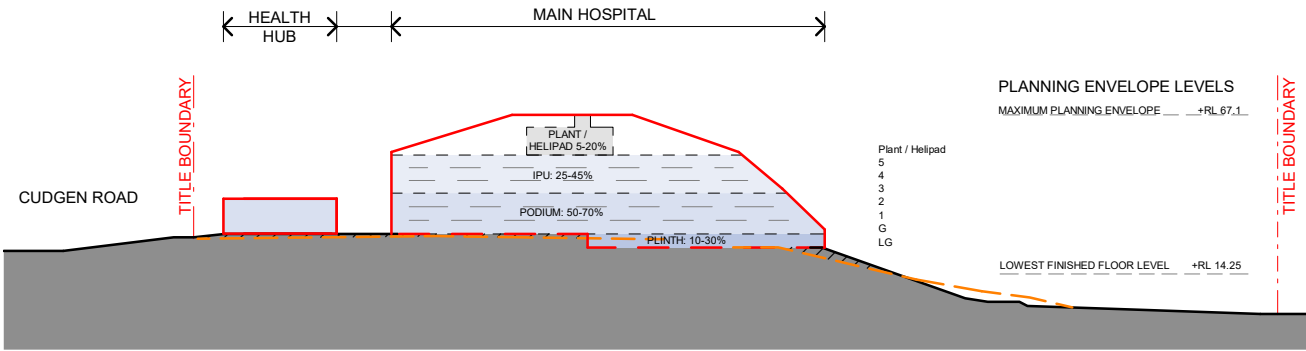
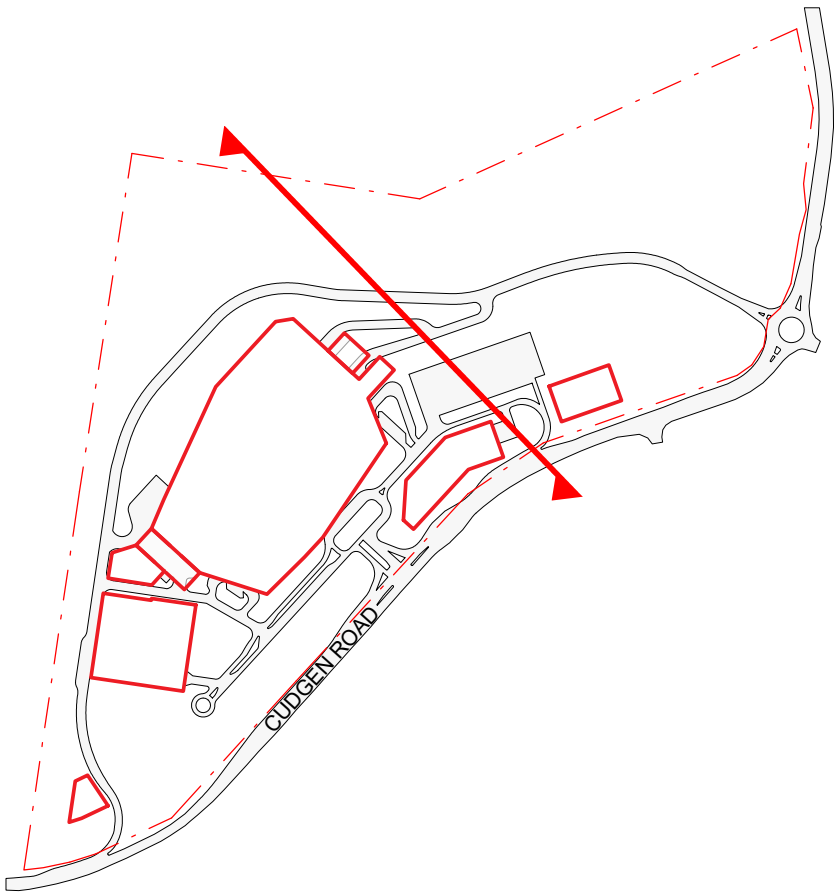
PROJECT NO

10363.00

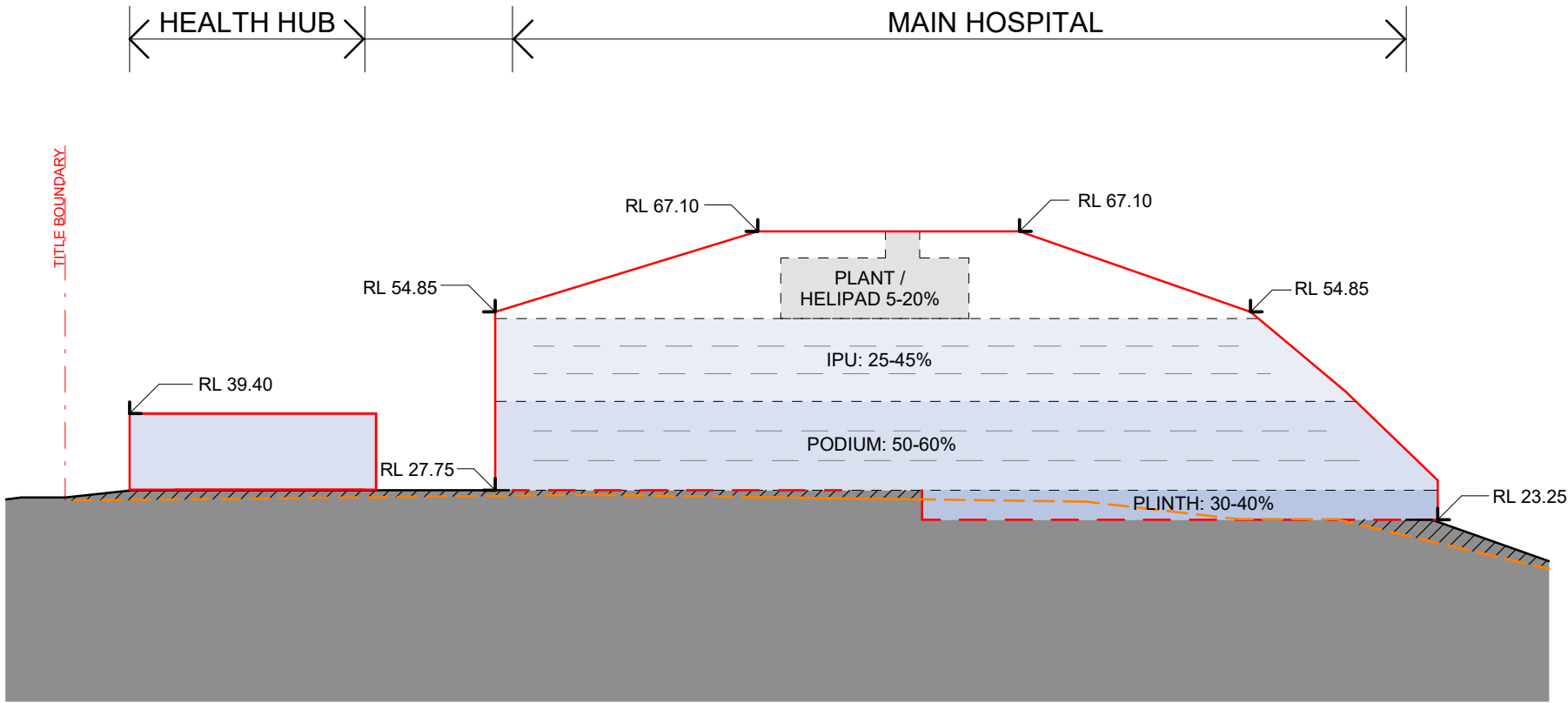
DRAWING No AR-SKE-50-301

REVISION 09

BIM 360/Tweed Valley Hospital/TVH\_BUILDING\_A18.rvt



**NORTH-EAST ELEVATION**  
SCALE 1:2500



**NORTH-EAST ELEVATION CALLOUT**  
SCALE 1:1000

MAXIMUM PLANNING ENVELOPE ABOVE GROUND LEVEL

MAXIMUM PLANNING ENVELOPE BELOW GROUND LEVEL

NATURAL GROUND LINE

GROUND LINE

**ANTICIPATED DENSITY OF ENVELOPE**

PLINTH - 30-40%

PODIUM - 50-60%

IPU - 25-45%

PLANT - 5-20%

NOTE: MAXIMUM ENVELOPE DOES NOT REPRESENT BUILDING FORMS. The **Maximum Planning Envelope** describes the height, width and breadth limits of the proposed building forms. It is to be construed that the maximum planning envelope extends to interface with the existing natural ground level (and capturing basement levels and associated substructure) or modified natural ground level. The **Maximum Planning Envelope** excludes secondary architectural features including as examples; glazed canopies, unenclosed covered walkways, building services, hard landscaping, flag poles, lighting poles, fencing and wayfinding signage or the like, which will occur beyond the boundary of the **Maximum Planning Envelope**

REV	DESCRIPTION	DATE
08	ISSUED FOR INFORMATION	02/05/2019
09	ISSUED FOR INFORMATION	11/09/2019

**COPYRIGHT**

ALL RIGHTS RESERVED. THIS WORK IS COPYRIGHT AND CANNOT BE REPRODUCED OR COPIED IN ANY FORM OR BY ANY MEANS (GRAPHIC, ELECTRONIC OR MECHANICAL, INCLUDING PHOTOCOPYING) WITHOUT THE WRITTEN PERMISSION OF THE PRINCIPAL UNDER THE TERMS OF THE CONTRACT. ANY LICENCE, EXPRESS OR IMPLIED, TO USE THE DOCUMENT FOR ANY PURPOSE WHATSOEVER IS RESTRICTED TO THE TERMS OF THE AGREEMENT OR IMPLIED AGREEMENT WITH THE PRINCIPAL UNDER THE TERMS OF THE CONTRACT.

**DIMENSIONS**

USE FIGURED DIMENSIONS, DO NOT SCALE. CONTRACTORS MUST VERIFY ALL DIMENSIONS ON THE SITE BEFORE COMMENCING ANY WORK OR MAKING ANY SHOP DRAWING WHICH MUST BE SUBMITTED AND REVIEWED BEFORE MANUFACTURE.

**FIXTURES, FITTINGS & EQUIPMENT SPECIFICATIONS**

SUBSTITUTE FF&E EQUIPMENT SPECIFICATIONS  
THE FIT-OUT DESIGN AND DOCUMENTATION HAS BEEN COMPLETED ON THE BASIS OF FF&E AND EQUIPMENT ADVISED TO THIS OFFICE AT THE TIME OF BRIEFING THE DESIGN. THE DESIGN PROVISIONS FOR FF&E AND EQUIPMENT INCORPORATES SPATIAL ALLOCATIONS, SERVICING, LOADING AND ACCESS CLEARANCES AND WHERE APPROPRIATE SERVICES REQUIREMENTS, HAVING DUE REGARD FOR SURROUNDING FIXTURES AND FITTINGS. IT SHOULD BE NOTED THAT SUBSTITUTE FF&E OR EQUIPMENT WITH ALTERNATE SPECIFICATIONS SHOULD NOT BE PROCURED PRIOR TO VALIDATING THOSE SPECIFICATIONS AGAINST THE ITEM CONTROL, SCHEDULE AND DESIGN PROVISIONS IN THE MODEL. THIS OFFICE ACCEPTS NO RESPONSIBILITY FOR THE PROCUREMENT OF SUBSTITUTE FF&E AND EQUIPMENT WHICH HAS NOT BEEN REVIEWED AND VALIDATED AGAINST THE ORIGINAL DESIGN PROVISIONS.

**SERVICE POINTS DISCLAIMER**

THE SERVICE POINTS IDENTIFIED ON THESE DRAWINGS HAVE BEEN OVERLAYED FROM THE BUILDING SERVICES ENGINEERING MODEL, AND ARE PROVIDED FOR INFORMATION AND SET-OUT PURPOSES ONLY. WE HAVE BEEN ADVISED BY THE SERVICES ENGINEERS THAT THE POINTS REPRESENTED ON THESE DRAWINGS ARE CORRECT AT THE TIME OF PUBLICATION. THIS OFFICE DOES NOT WARRANT THE ACCURACY OF THIS DATA, REFER TO THE BUILDING SERVICES ENGINEERING DOCUMENTATION FOR THE INSTALLATION OF THE SERVICES POINTS, AND THE INTERFACE BETWEEN THE SERVICES POINTS AND THE RESPECTIVE ENGINEERING SYSTEMS.

ARCHITECTS

**STH**

BATESSMART.

ABN: 21 134 476 065  
LEVEL 4, 89 YORK STREET  
SYDNEY NSW 2000, AUSTRALIA  
PH: (02) 8299 4600 FAX: (03) 9885 2455  
E: syd@batesmart.com.au

43 BRISBANE STREET,  
SURRY HILLS, NSW 2010  
ABN: 68 094 740 986 PH: (02) 8354 5100  
E: syd@batesmart.com.au

THIS ARCHITECTURAL DESIGN IS THE COPYRIGHT OF SILVER THOMAS HANLEY AND BATES SMART AND SHALL NOT BE REPRODUCED WITHOUT THEIR WRITTEN PERMISSION

PROJECT MANAGER

TSA  
MANAGEMENT

CLIENT

Health  
Infrastructure

Health  
Northern NSW  
Local Health District

PROJECT

**TWEED VALLEY HOSPITAL**  
771 Cudgen Road, Cudgen

DRAWING TITLE

**NORTH-EAST ELEVATION  
HOSPITAL**

SCALE

0 40 80 120 160 200

m

SCALE

DATE 11/09/2019

DRAWN BY SL

CHECKED AB

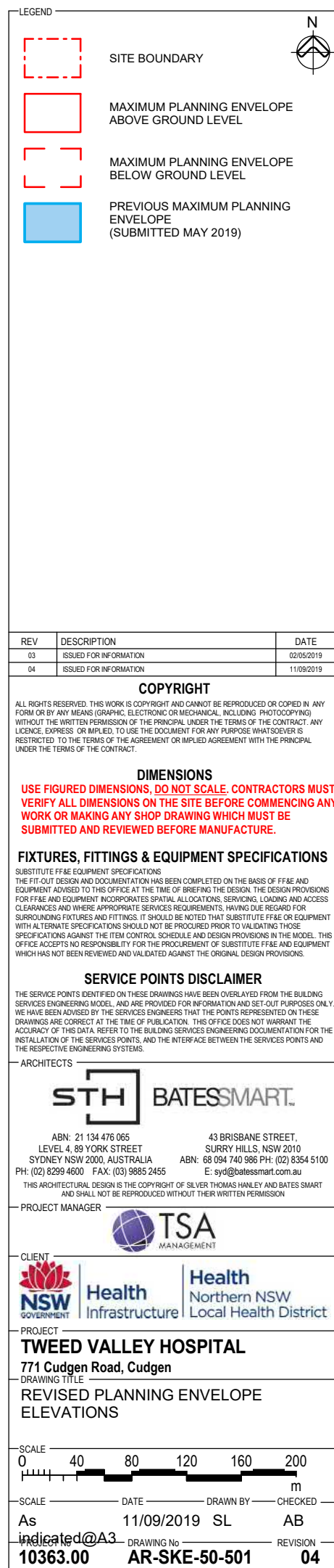
indicated @ A3

DRAWING No 10363.00

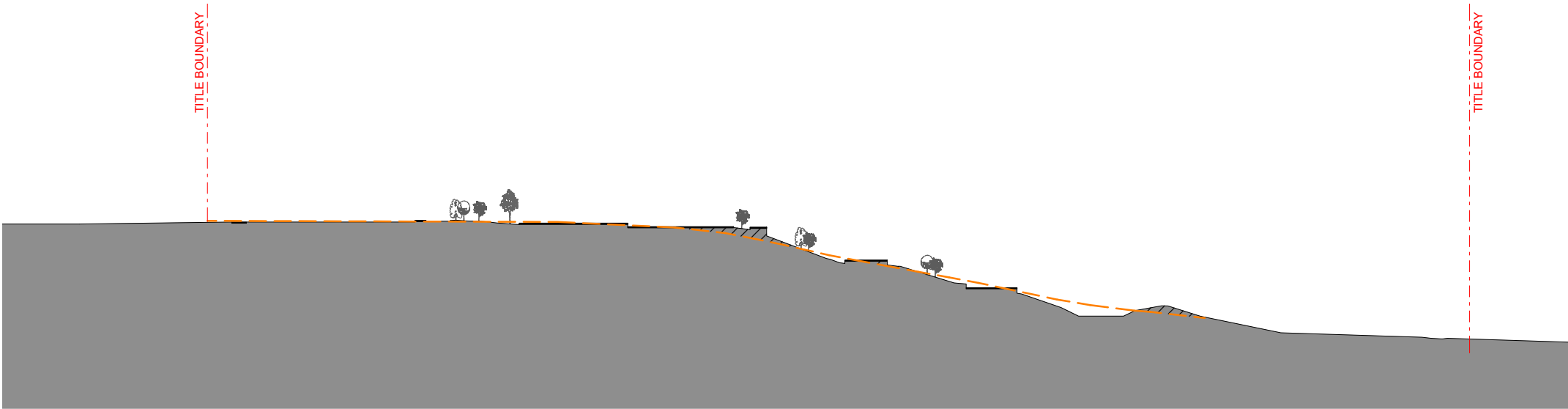
REVISION AR-SKE-50-401

09

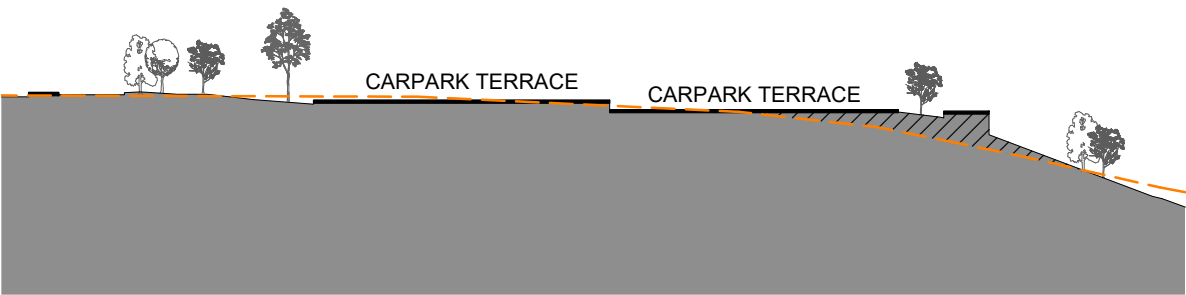
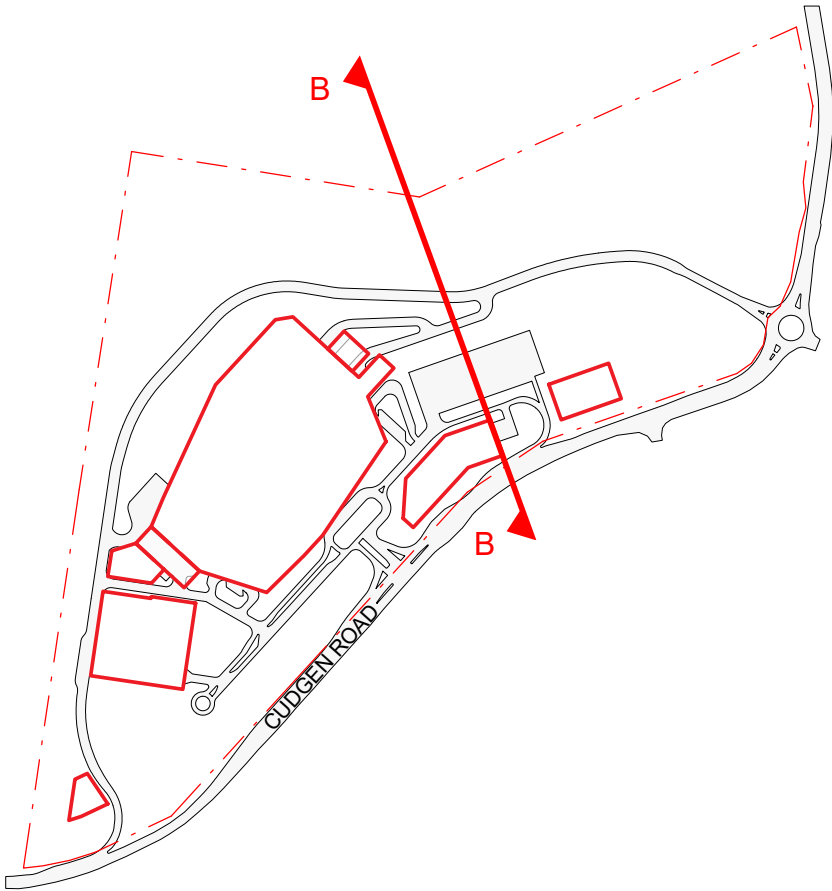
BIM 360/Tweed Valley Hospital/TVH\_BUILDING\_A18.rvt







**SITE SECTION B (EAST CARPARK)**  
SCALE 1:1000



**SITE SECTION B CALLOUT**  
SCALE 1:500

LEGEND

EXISTING GROUND LINE

PROPOSED GROUND LINE

N

REV	DESCRIPTION	DATE
03	ISSUED FOR INFORMATION	02/05/2019
04	ISSUED FOR INFORMATION	11/09/2019

**COPYRIGHT**

ALL RIGHTS RESERVED. THIS WORK IS COPYRIGHT AND CANNOT BE REPRODUCED OR COPIED IN ANY FORM OR BY ANY MEANS (GRAPHIC, ELECTRONIC OR MECHANICAL, INCLUDING PHOTOCOPYING) WITHOUT THE WRITTEN PERMISSION OF THE PRINCIPAL UNDER THE TERMS OF THE CONTRACT. ANY LICENCE, EXPRESS OR IMPLIED, TO USE THE DOCUMENT FOR ANY PURPOSE WHATSOEVER IS RESTRICTED TO THE TERMS OF THE AGREEMENT OR IMPLIED AGREEMENT WITH THE PRINCIPAL UNDER THE TERMS OF THE CONTRACT.

**DIMENSIONS**

USE FIGURED DIMENSIONS, DO NOT SCALE. CONTRACTORS MUST VERIFY ALL DIMENSIONS ON THE SITE BEFORE COMMENCING ANY WORK OR MAKING ANY SHOP DRAWING WHICH MUST BE SUBMITTED AND REVIEWED BEFORE MANUFACTURE.

**FIXTURES, FITTINGS & EQUIPMENT SPECIFICATIONS**

SUBSTITUTE FF&E EQUIPMENT SPECIFICATIONS  
THE FIT-OUT DESIGN AND DOCUMENTATION HAS BEEN COMPLETED ON THE BASIS OF FF&E AND EQUIPMENT ADVISED TO THIS OFFICE AT THE TIME OF BRIEFING THE DESIGN. THE DESIGN PROVISIONS FOR FF&E AND EQUIPMENT INCORPORATES SPATIAL ALLOCATIONS, SERVICING, LOADING AND ACCESS CLEARANCES AND WHERE APPROPRIATE SERVICES REQUIREMENTS, HAVING DUE REGARD FOR SURROUNDING FIXTURES AND FITTINGS. IT SHOULD BE NOTED THAT SUBSTITUTE FF&E OR EQUIPMENT WITH ALTERNATE SPECIFICATIONS SHOULD NOT BE PROCURED PRIOR TO VALIDATING THOSE SPECIFICATIONS AGAINST THE ITEM CONTROL, SCHEDULE AND DESIGN PROVISIONS IN THE MODEL. THIS OFFICE ACCEPTS NO RESPONSIBILITY FOR THE PROCUREMENT OF SUBSTITUTE FF&E AND EQUIPMENT WHICH HAS NOT BEEN REVIEWED AND VALIDATED AGAINST THE ORIGINAL DESIGN PROVISIONS.

**SERVICE POINTS DISCLAIMER**

THE SERVICE POINTS IDENTIFIED ON THESE DRAWINGS HAVE BEEN OVERLAYED FROM THE BUILDING SERVICES ENGINEERING MODEL, AND ARE PROVIDED FOR INFORMATION AND SET-OUT PURPOSES ONLY. WE HAVE BEEN ADVISED BY THE SERVICES ENGINEERS THAT THE POINTS REPRESENTED ON THESE DRAWINGS ARE CORRECT AT THE TIME OF PUBLICATION. THIS OFFICE DOES NOT WARRANT THE ACCURACY OF THIS DATA, REFER TO THE BUILDING SERVICES ENGINEERING DOCUMENTATION FOR THE INSTALLATION OF THE SERVICES POINTS, AND THE INTERFACE BETWEEN THE SERVICES POINTS AND THE RESPECTIVE ENGINEERING SYSTEMS.

ARCHITECTS

STH

BATESSMART.

ABN: 21 134 476 065  
LEVEL 4, 89 YORK STREET  
SYDNEY NSW 2000, AUSTRALIA  
PH: (02) 8299 4600 FAX: (03) 9885 2455

43 BRISBANE STREET,  
SURRY HILLS, NSW 2010  
ABN: 68 094 740 986 PH: (02) 8354 5100  
E: syd@batesmart.com.au

THIS ARCHITECTURAL DESIGN IS THE COPYRIGHT OF SILVER THOMAS HANLEY AND BATES SMART AND SHALL NOT BE REPRODUCED WITHOUT THEIR WRITTEN PERMISSION

PROJECT MANAGER

TSA

MANAGEMENT

CLIENT

NSW GOVERNMENT

Health Infrastructure

Health Northern NSW Local Health District

PROJECT

**TWEED VALLEY HOSPITAL**  
771 Cudgen Road, Cudgen

DRAWING TITLE

**SITE SECTION B**  
**EAST CARPARK**

SCALE

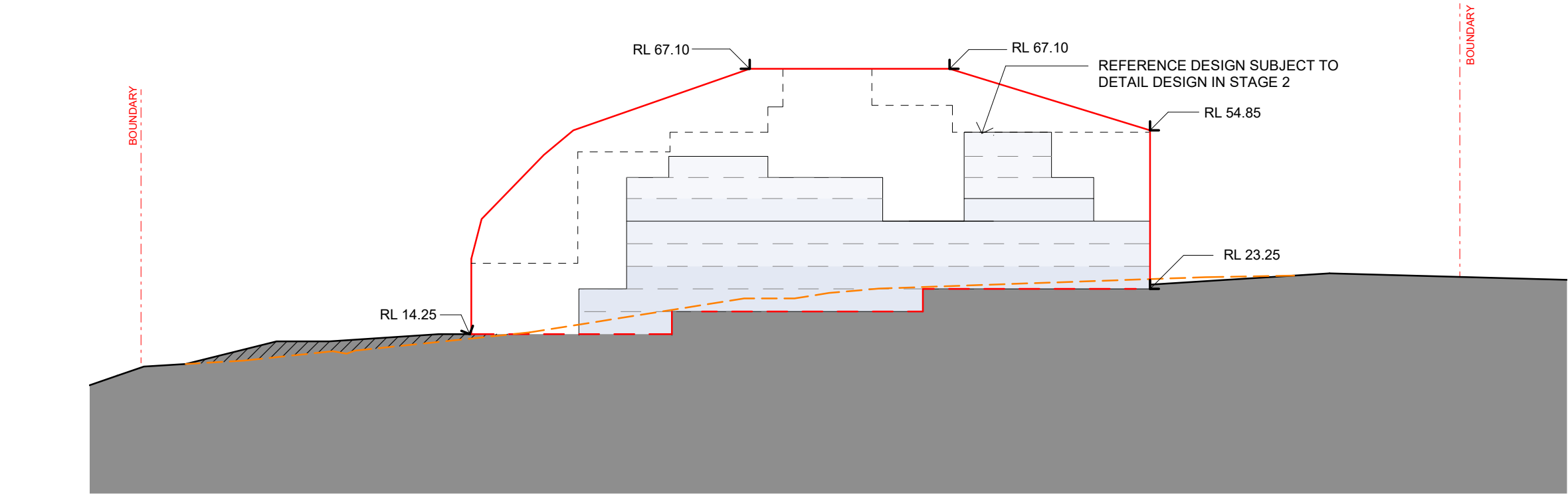
0 40 80 120 160 200 m

SCALE

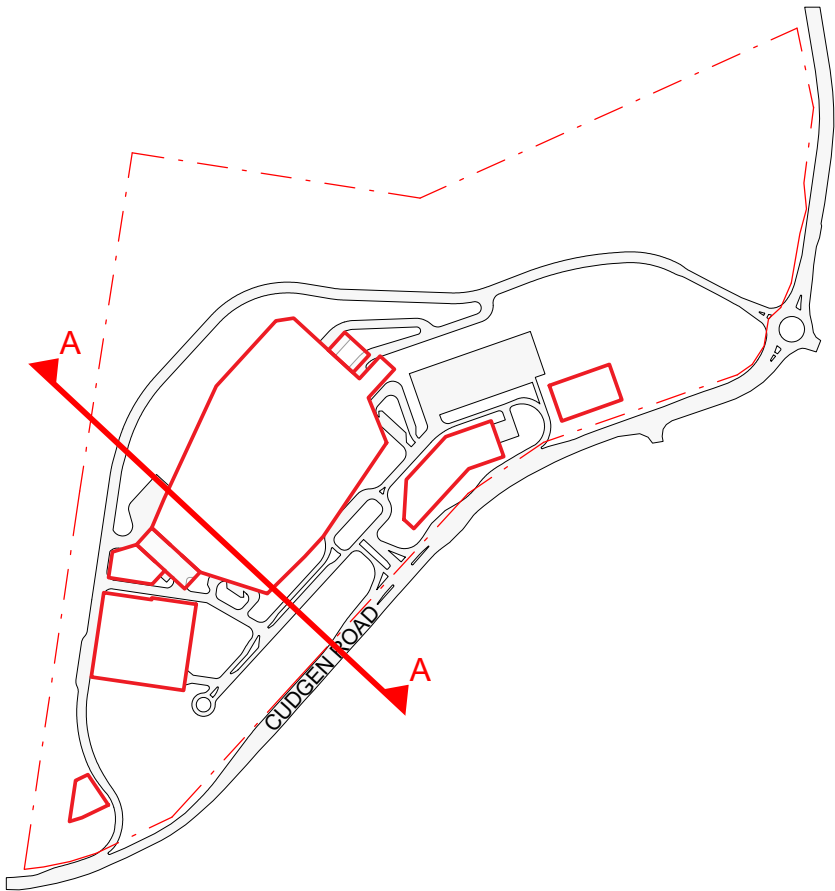
DATE 11/09/2019 DRAWN BY SL CHECKED AB

As indicated @ A3

DRAWING No 10363.00 REVISION 04



**BUILDING SECTION A**  
SCALE 1:1000



MAXIMUM PLANNING ENVELOPE ABOVE GROUND LEVEL

MAXIMUM PLANNING ENVELOPE BELOW GROUND LEVEL

NATURAL GROUND LINE

GROUND LINE

ANTICIPATED DENSITY OF ENVELOPE

PLINTH - 30-40%

PODIUM - 50-60%

IPU - 25-45%

PLANT - 5-20%

REV	DESCRIPTION	DATE
03	ISSUED FOR INFORMATION	02/05/2019
04	ISSUED FOR INFORMATION	11/09/2019

COPYRIGHT

ALL RIGHTS RESERVED. THIS WORK IS COPYRIGHT AND CANNOT BE REPRODUCED OR COPIED IN ANY FORM OR BY ANY MEANS (GRAPHIC, ELECTRONIC OR MECHANICAL, INCLUDING PHOTOCOPYING) WITHOUT THE WRITTEN PERMISSION OF THE PRINCIPAL UNDER THE TERMS OF THE CONTRACT. ANY LICENCE, EXPRESS OR IMPLIED, TO USE THE DOCUMENT FOR ANY PURPOSE WHATSOEVER IS RESTRICTED TO THE TERMS OF THE AGREEMENT OR IMPLIED AGREEMENT WITH THE PRINCIPAL UNDER THE TERMS OF THE CONTRACT.

DIMENSIONS

USE FIGURED DIMENSIONS, DO NOT SCALE. CONTRACTORS MUST VERIFY ALL DIMENSIONS ON THE SITE BEFORE COMMENCING ANY WORK OR MAKING ANY SHOP DRAWING WHICH MUST BE SUBMITTED AND REVIEWED BEFORE MANUFACTURE.

FIXTURES, FITTINGS & EQUIPMENT SPECIFICATIONS

SUBSTITUTE FF&E EQUIPMENT SPECIFICATIONS  
THE FIT-OUT DESIGN AND DOCUMENTATION HAS BEEN COMPLETED ON THE BASIS OF FF&E AND EQUIPMENT ADVISED TO THIS OFFICE AT THE TIME OF BRIEFING THE DESIGN. THE DESIGN PROVISIONS FOR FF&E AND EQUIPMENT INCORPORATES SPATIAL ALLOCATIONS, SERVICING, LOADING AND ACCESS CLEARANCES AND WHERE APPROPRIATE SERVICES REQUIREMENTS, HAVING DUE REGARD FOR SURROUNDING FIXTURES AND FITTINGS. IT SHOULD BE NOTED THAT SUBSTITUTE FF&E OR EQUIPMENT WITH ALTERNATE SPECIFICATIONS SHOULD NOT BE PROCURED PRIOR TO VALIDATING THOSE SPECIFICATIONS AGAINST THE ITEM CONTROL, SCHEDULE AND DESIGN PROVISIONS IN THE MODEL. THIS OFFICE ACCEPTS NO RESPONSIBILITY FOR THE PROCUREMENT OF SUBSTITUTE FF&E AND EQUIPMENT WHICH HAS NOT BEEN REVIEWED AND VALIDATED AGAINST THE ORIGINAL DESIGN PROVISIONS.

SERVICE POINTS DISCLAIMER

THE SERVICE POINTS IDENTIFIED ON THESE DRAWINGS HAVE BEEN OVERLAYED FROM THE BUILDING SERVICES ENGINEERING MODEL, AND ARE PROVIDED FOR INFORMATION AND SET-OUT PURPOSES ONLY. WE HAVE BEEN ADVISED BY THE SERVICES ENGINEERS THAT THE POINTS REPRESENTED ON THESE DRAWINGS ARE CORRECT AT THE TIME OF PUBLICATION. THIS OFFICE DOES NOT WARRANT THE ACCURACY OF THIS DATA, REFER TO THE BUILDING SERVICES ENGINEERING DOCUMENTATION FOR THE INSTALLATION OF THE SERVICES POINTS, AND THE INTERFACE BETWEEN THE SERVICES POINTS AND THE RESPECTIVE ENGINEERING SYSTEMS.

ARCHITECTS

STH

BATESSMART.

ABN: 21 134 476 065  
LEVEL 4, 89 YORK STREET  
SYDNEY NSW 2000, AUSTRALIA  
PH: (02) 8299 4600 FAX: (03) 9885 2455

43 BRISBANE STREET,  
SURRY HILLS, NSW 2010  
ABN: 68 094 740 986 PH: (02) 8354 5100  
E: syd@batesmart.com.au

THIS ARCHITECTURAL DESIGN IS THE COPYRIGHT OF SILVER THOMAS HANLEY AND BATES SMART AND SHALL NOT BE REPRODUCED WITHOUT THEIR WRITTEN PERMISSION

PROJECT MANAGER

TSA

MANAGEMENT

CLIENT

NSW

GOVERNMENT

Health

Infrastructure

Health

Northern NSW

Local Health District

PROJECT

TWEED VALLEY HOSPITAL

771 Cudgen Road, Cudgen

DRAWING TITLE

BUILDING SECTION A

SCALE

0 40 80 120 160 200

m

SCALE

DATE

DRAWN BY

CHECKED

As indicated @ A3

11/09/2019

SL

AB

DRAWING No

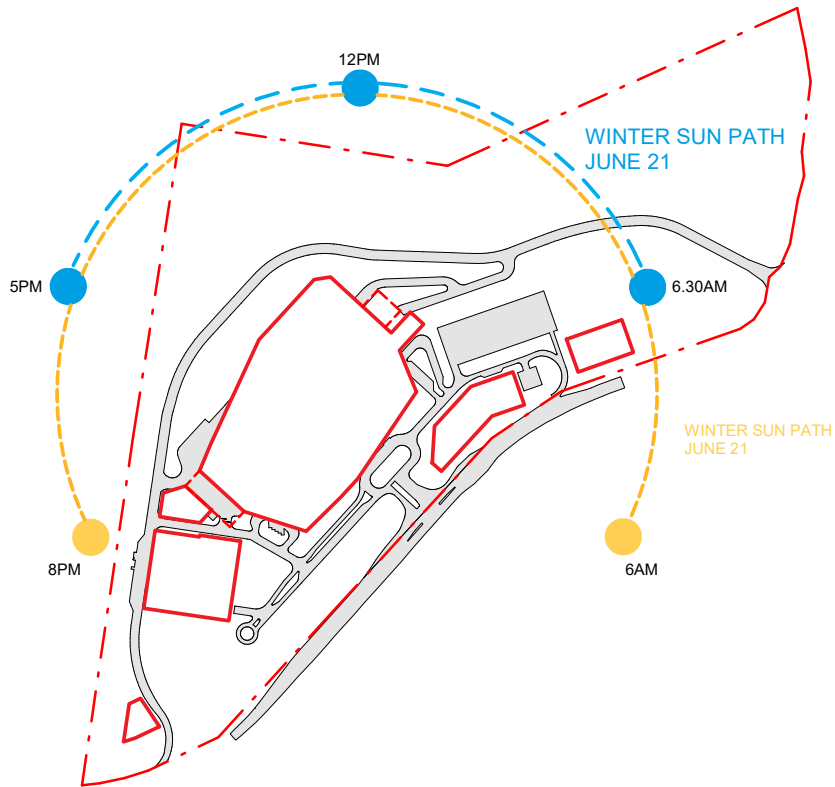
REVISION

10363.00

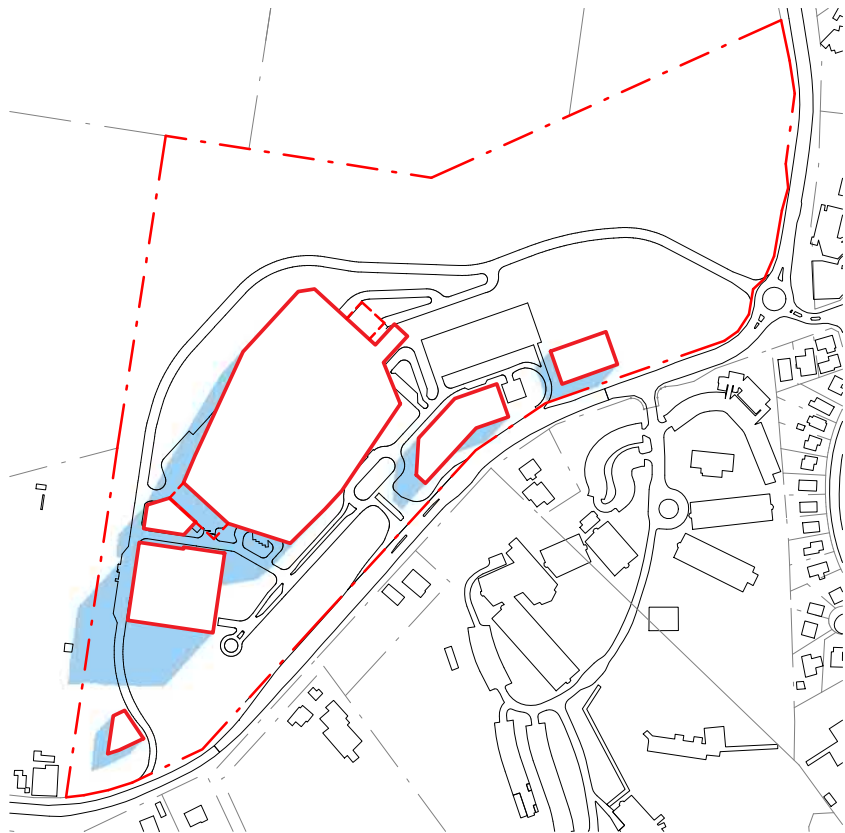
AR-SKE-51-003

04

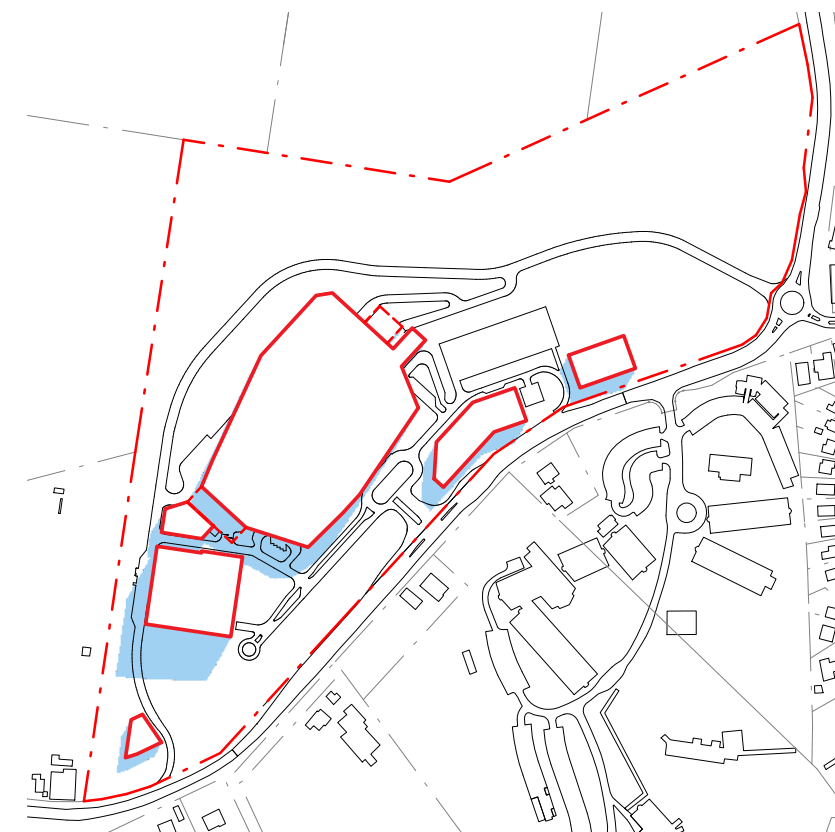
BIM 360/Tweed Valley Hospital/TVH\_BUILDING\_A18.rvt



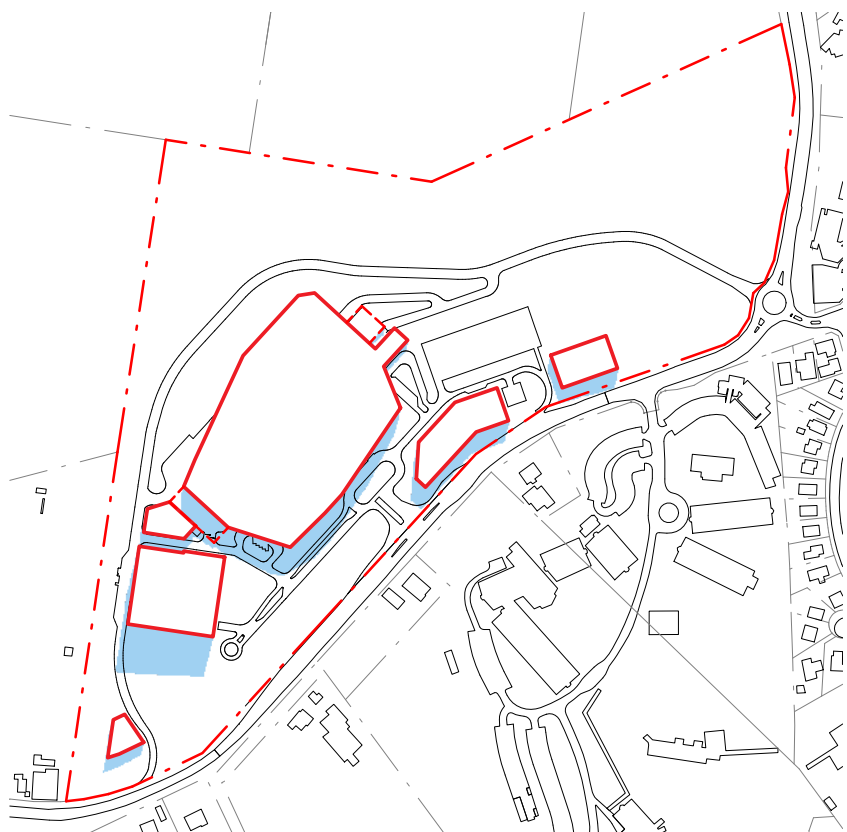
SUN PATH DIAGRAM



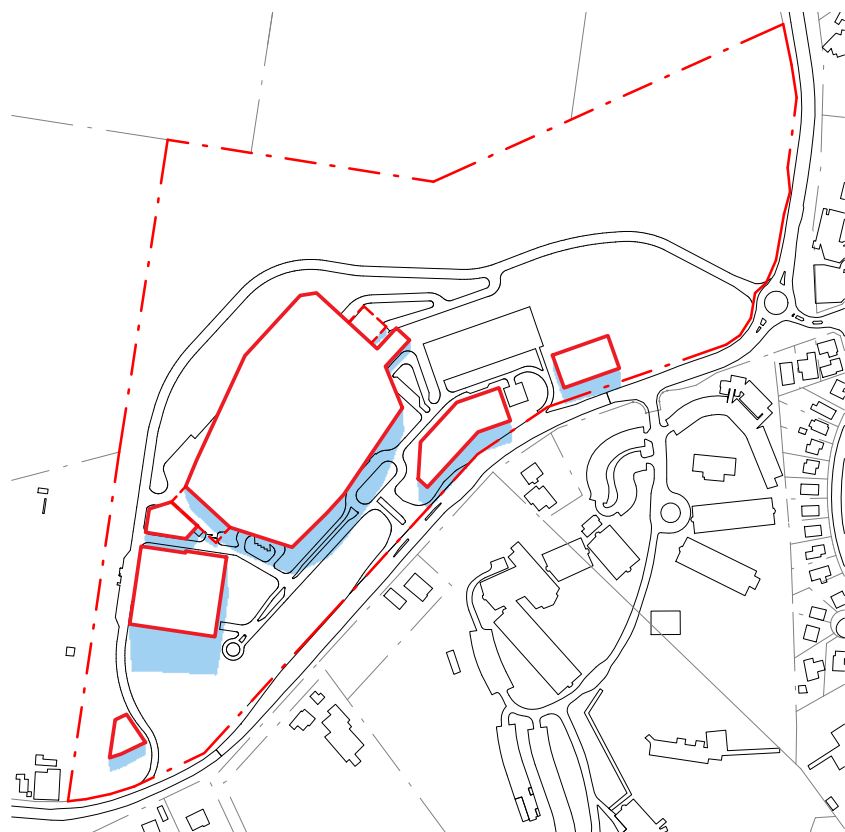
9AM - JUNE 21



10AM - JUNE 21



11AM - JUNE 21



12PM - JUNE 21

LEGEND

SITE BOUNDARY

MAXIMUM PLANNING ENVELOPE ABOVE GROUND LEVEL

MAXIMUM PLANNING ENVELOPE BELOW GROUND LEVEL

SHADOWS CAST BY MAXIMUM PLANNING ENVELOPE

N

NOTE: MAXIMUM ENVELOPE DOES NOT REPRESENT BUILDING FORMS. The **Maximum Planning Envelope** describes the height, width and breadth limits of the proposed building forms. It is to be construed that the maximum planning envelope extends to interface with the existing natural ground level (and capturing basement levels and associated substructure) or modified natural ground level. The **Maximum Planning Envelope** excludes secondary architectural features including as examples: glazed canopies, unenclosed covered walkways, building services, hard landscaping, flag poles, lighting poles, fencing and wayfinding signage or the like, which will occur beyond the boundary of the **Maximum Planning Envelope**

REV	DESCRIPTION	DATE
03	ISSUED FOR INFORMATION	02/05/2019
04	ISSUED FOR INFORMATION	11/09/2019

COPYRIGHT

ALL RIGHTS RESERVED. THIS WORK IS COPYRIGHT AND CANNOT BE REPRODUCED OR COPIED IN ANY FORM OR BY ANY MEANS (GRAPHIC, ELECTRONIC OR MECHANICAL, INCLUDING PHOTOCOPYING) WITHOUT THE WRITTEN PERMISSION OF THE PRINCIPAL UNDER THE TERMS OF THE CONTRACT. ANY LICENCE, EXPRESS OR IMPLIED, TO USE THE DOCUMENT FOR ANY PURPOSE WHATSOEVER IS RESTRICTED TO THE TERMS OF THE AGREEMENT OR IMPLIED AGREEMENT WITH THE PRINCIPAL UNDER THE TERMS OF THE CONTRACT.

DIMENSIONS

USE FIGURED DIMENSIONS, DO NOT SCALE. CONTRACTORS MUST VERIFY ALL DIMENSIONS ON THE SITE BEFORE COMMENCING ANY WORK OR MAKING ANY SHOP DRAWING WHICH MUST BE SUBMITTED AND REVIEWED BEFORE MANUFACTURE.

FIXTURES, FITTINGS & EQUIPMENT SPECIFICATIONS

SUBSTITUTE FF&E EQUIPMENT SPECIFICATIONS  
THE FIT-OUT DESIGN AND DOCUMENTATION HAS BEEN COMPLETED ON THE BASIS OF FF&E AND EQUIPMENT ADVISED TO THIS OFFICE AT THE TIME OF BRIEFING THE DESIGN. THE DESIGN PROVISIONS FOR FF&E AND EQUIPMENT INCORPORATES SPATIAL ALLOCATIONS, SERVICING, LOADING AND ACCESS CLEARANCES AND WHERE APPROPRIATE SERVICES REQUIREMENTS, HAVING DUE REGARD FOR SURROUNDING FIXTURES AND FITTINGS. IT SHOULD BE NOTED THAT SUBSTITUTE FF&E OR EQUIPMENT WITH ALTERNATE SPECIFICATIONS SHOULD NOT BE PROCURED PRIOR TO VALIDATING THOSE SPECIFICATIONS AGAINST THE ITEM CONTROL, SCHEDULE AND DESIGN PROVISIONS IN THE MODEL. THIS OFFICE ACCEPTS NO RESPONSIBILITY FOR THE PROCUREMENT OF SUBSTITUTE FF&E AND EQUIPMENT WHICH HAS NOT BEEN REVIEWED AND VALIDATED AGAINST THE ORIGINAL DESIGN PROVISIONS.

SERVICE POINTS DISCLAIMER

THE SERVICE POINTS IDENTIFIED ON THESE DRAWINGS HAVE BEEN OVERLAYED FROM THE BUILDING SERVICES ENGINEERING MODEL, AND ARE PROVIDED FOR INFORMATION AND SET-OUT PURPOSES ONLY. WE HAVE BEEN ADVISED BY THE SERVICES ENGINEERS THAT THE POINTS REPRESENTED ON THESE DRAWINGS ARE CORRECT AT THE TIME OF PUBLICATION. THIS OFFICE DOES NOT WARRANT THE ACCURACY OF THIS DATA, REFER TO THE BUILDING SERVICES ENGINEERING DOCUMENTATION FOR THE INSTALLATION OF THE SERVICES POINTS, AND THE INTERFACE BETWEEN THE SERVICES POINTS AND THE RESPECTIVE ENGINEERING SYSTEMS.

ARCHITECTS

STH

BATESSMART.

ABN: 21 134 476 065  
LEVEL 4, 89 YORK STREET  
SYDNEY NSW 2000, AUSTRALIA  
PH: (02) 8299 4600 FAX: (03) 9885 2455  
E: syd@batesmart.com.au

43 BRISBANE STREET,  
SURRY HILLS, NSW 2010  
ABN: 68 094 740 986 PH: (02) 8354 5100  
E: syd@batesmart.com.au

THIS ARCHITECTURAL DESIGN IS THE COPYRIGHT OF SILVER THOMAS HANLEY AND BATES SMART AND SHALL NOT BE REPRODUCED WITHOUT THEIR WRITTEN PERMISSION

PROJECT MANAGER

TSA

MANAGEMENT

CLIENT

NSW

GOVERNMENT

Health

Infrastructure

Health

Northern NSW

Local Health District

PROJECT

TWEED VALLEY HOSPITAL

771 Cudgen Road, Cudgen

DRAWING TITLE

SHADOW STUDIES

(1 of 2)

SCALE

0

40

80

120

160

200

m

SCALE

DATE

DRAWN BY

CHECKED

As indicated @ A3

11/09/2019

CE

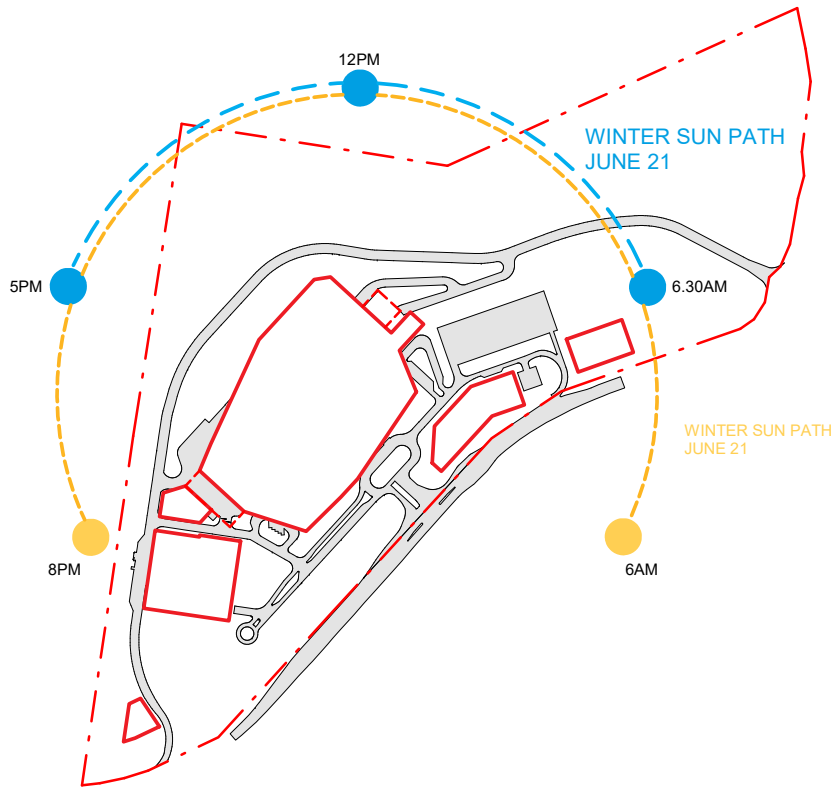
BS

10363.00

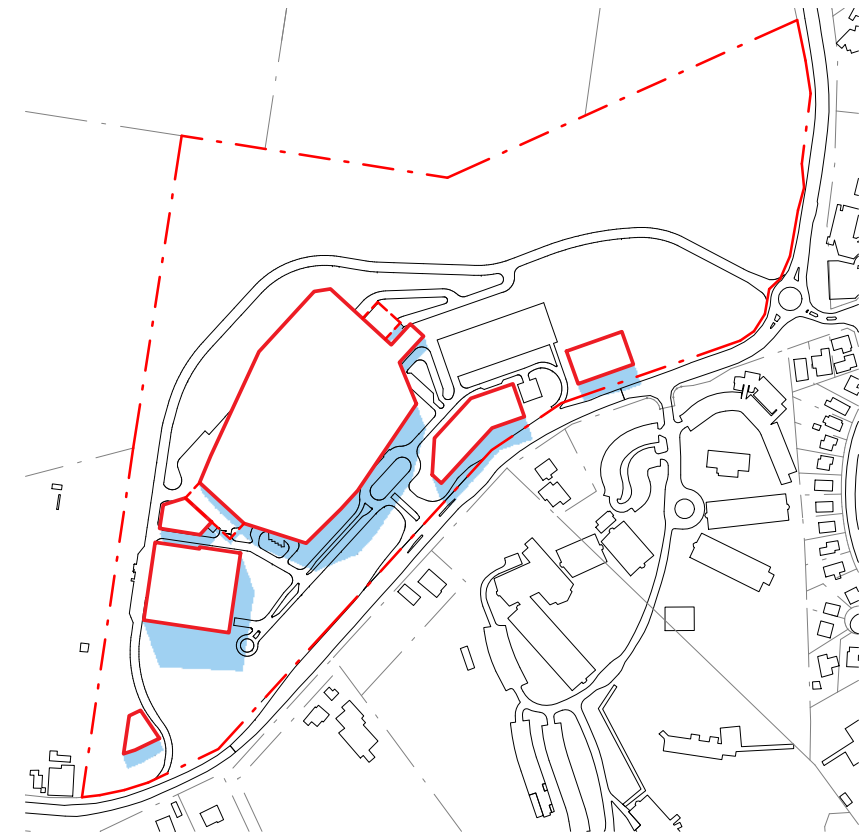
AR-SKE-53-101

04

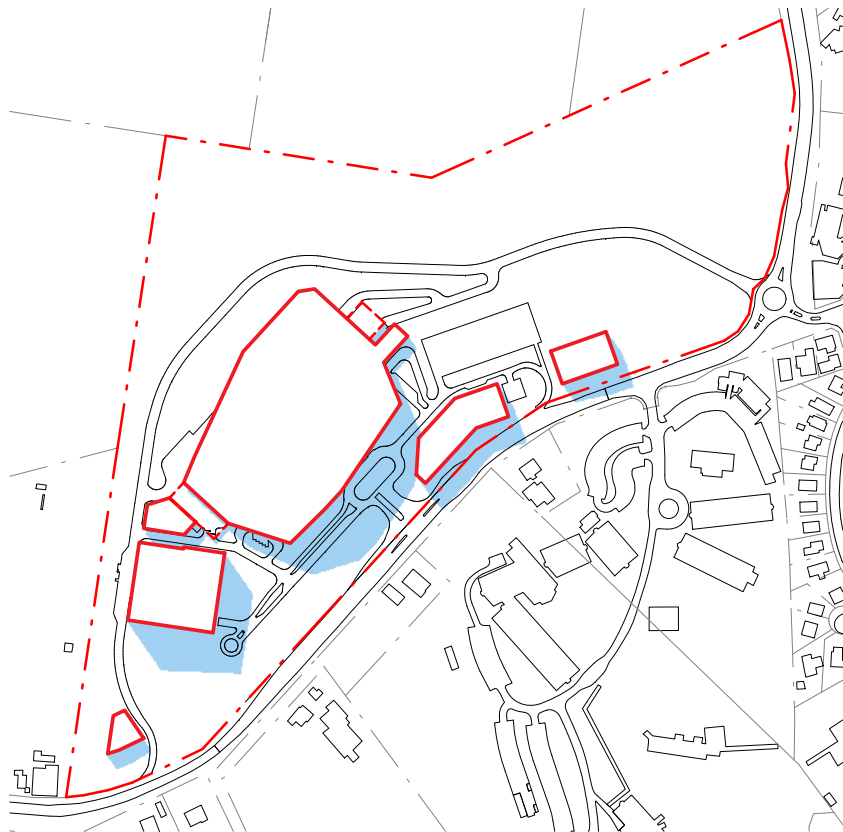
BIM 360/Tweed Valley Hospital/TVH\_BUILDING\_A18.rvt



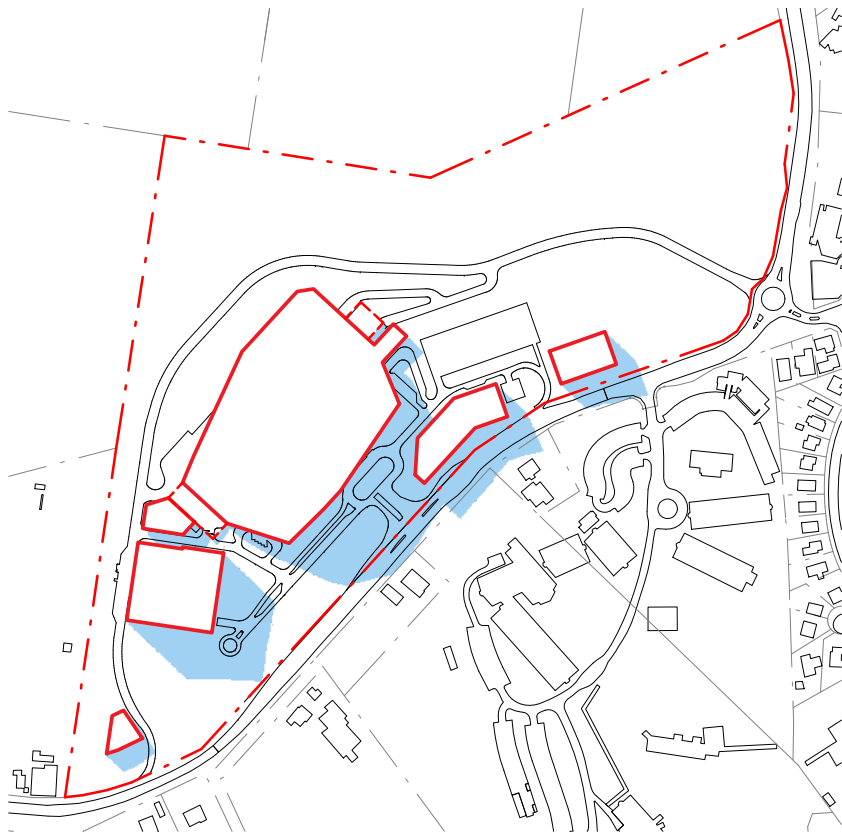
SUN PATH DIAGRAM



1PM - JUNE 21



2PM - JUNE 21



3PM - JUNE 21

LEGEND

SITE BOUNDARY

MAXIMUM PLANNING ENVELOPE ABOVE GROUND LEVEL

MAXIMUM PLANNING ENVELOPE BELOW GROUND LEVEL

SHADOWS CAST BY MAXIMUM PLANNING ENVELOPE

NOTE: MAXIMUM ENVELOPE DOES NOT REPRESENT BUILDING FORMS. The **Maximum Planning Envelope** describes the height, width and breadth limits of the proposed building forms. It is to be construed that the maximum planning envelope extends to interface with the existing natural ground level (and capturing basement levels and associated substructure) or modified natural ground level. The **Maximum Planning Envelope** excludes secondary architectural features including as examples; glazed canopies, unenclosed covered walkways, building services, hard landscaping, flag poles, lighting poles, fencing and wayfinding signage or the like, which will occur beyond the boundary of the **Maximum Planning Envelope**

REV	DESCRIPTION	DATE
03	ISSUED FOR INFORMATION	02/05/2019
04	ISSUED FOR INFORMATION	11/09/2019

COPYRIGHT

ALL RIGHTS RESERVED. THIS WORK IS COPYRIGHT AND CANNOT BE REPRODUCED OR COPIED IN ANY FORM OR BY ANY MEANS (GRAPHIC, ELECTRONIC OR MECHANICAL, INCLUDING PHOTOCOPYING) WITHOUT THE WRITTEN PERMISSION OF THE PRINCIPAL UNDER THE TERMS OF THE CONTRACT. ANY LICENCE, EXPRESS OR IMPLIED, TO USE THE DOCUMENT FOR ANY PURPOSE WHATSOEVER IS RESTRICTED TO THE TERMS OF THE AGREEMENT OR IMPLIED AGREEMENT WITH THE PRINCIPAL UNDER THE TERMS OF THE CONTRACT.

DIMENSIONS

USE FIGURED DIMENSIONS, DO NOT SCALE. CONTRACTORS MUST VERIFY ALL DIMENSIONS ON THE SITE BEFORE COMMENCING ANY WORK OR MAKING ANY SHOP DRAWING WHICH MUST BE SUBMITTED AND REVIEWED BEFORE MANUFACTURE.

FIXTURES, FITTINGS & EQUIPMENT SPECIFICATIONS

SUBSTITUTE FF&E EQUIPMENT SPECIFICATIONS  
THE FIT-OUT DESIGN AND DOCUMENTATION HAS BEEN COMPLETED ON THE BASIS OF FF&E AND EQUIPMENT ADVISED TO THIS OFFICE AT THE TIME OF BRIEFING THE DESIGN. THE DESIGN PROVISIONS FOR FF&E AND EQUIPMENT INCORPORATES SPATIAL ALLOCATIONS, SERVICING, LOADING AND ACCESS CLEARANCES AND WHERE APPROPRIATE SERVICES REQUIREMENTS, HAVING DUE REGARD FOR SURROUNDING FIXTURES AND FITTINGS. IT SHOULD BE NOTED THAT SUBSTITUTE FF&E OR EQUIPMENT WITH ALTERNATE SPECIFICATIONS SHOULD NOT BE PROCURED PRIOR TO VALIDATING THOSE SPECIFICATIONS AGAINST THE ITEM CONTROL, SCHEDULE AND DESIGN PROVISIONS IN THE MODEL. THIS OFFICE ACCEPTS NO RESPONSIBILITY FOR THE PROCUREMENT OF SUBSTITUTE FF&E AND EQUIPMENT WHICH HAS NOT BEEN REVIEWED AND VALIDATED AGAINST THE ORIGINAL DESIGN PROVISIONS.

SERVICE POINTS DISCLAIMER

THE SERVICE POINTS IDENTIFIED ON THESE DRAWINGS HAVE BEEN OVERLAYED FROM THE BUILDING SERVICES ENGINEERING MODEL, AND ARE PROVIDED FOR INFORMATION AND SET-OUT PURPOSES ONLY. WE HAVE BEEN ADVISED BY THE SERVICES ENGINEERS THAT THE POINTS REPRESENTED ON THESE DRAWINGS ARE CORRECT AT THE TIME OF PUBLICATION. THIS OFFICE DOES NOT WARRANT THE ACCURACY OF THIS DATA, REFER TO THE BUILDING SERVICES ENGINEERING DOCUMENTATION FOR THE INSTALLATION OF THE SERVICE POINTS, AND THE INTERFACE BETWEEN THE SERVICE POINTS AND THE RESPECTIVE ENGINEERING SYSTEMS.

ARCHITECTS

STH

BATESSMART.

ABN: 21 134 476 065  
LEVEL 4, 89 YORK STREET  
SYDNEY NSW 2000, AUSTRALIA  
PH: (02) 8299 4600 FAX: (03) 9885 2455  
E: syd@batesmart.com.au

43 BRISBANE STREET,  
SURRY HILLS, NSW 2010  
ABN: 68 094 740 986 PH: (02) 8354 5100  
E: syd@batesmart.com.au

THIS ARCHITECTURAL DESIGN IS THE COPYRIGHT OF SILVER THOMAS HANLEY AND BATES SMART AND SHALL NOT BE REPRODUCED WITHOUT THEIR WRITTEN PERMISSION

PROJECT MANAGER

TSA

MANAGEMENT

CLIENT

NSW

GOVERNMENT

Health

Infrastructure

Health

Northern NSW

Local Health District

PROJECT

TWEED VALLEY HOSPITAL

771 Cudgen Road, Cudgen

DRAWING TITLE

SHADOW STUDIES

(2of 2)

SCALE

0

40

80

120

160

200

m

SCALE

DATE

DRAWN BY

CHECKED

As indicated @ A3

11/09/2019

CE

BS

INDICATED @ A3

DRAWING No

REVISION

10363.00

AR-SKE-53-102

04

BIM 360/Tweed Valley Hospital/TVH\_BUILDING\_A18.rvt