

Stadium Australia Redevelopment

(SSD10342)

Revised Design Excellence Strategy

December 2019

INFRASTRUCTURE
NSW

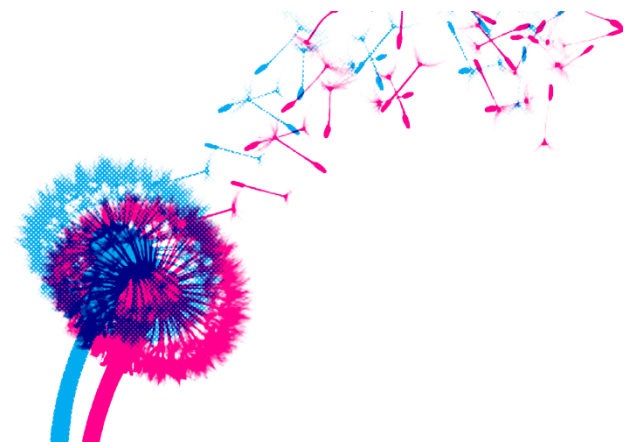


Table of Contents

1. REVISED DESIGN EXCELLENCE STRATEGY	3
2. OUTCOMES OF DRP MEETING 3 DECEMBER 2019	4

1. Revised Design Excellence Strategy

The following strategy has been developed in consideration of the SOPA Design Excellence policy and in relation to the scope of the proposed Stadium Australia refurbishment.

External changes to the Stadium will be limited to the creation of new north and south stands with associated new roofs. In designing the changes to the Stadium, the following process is being followed:

- Analysis of the existing stadium design in relation to scale, form, materials and detailing
- Review of design changes in accordance with the objectives of Better Placed: An integrated design policy for the built environment of NSW (refer to Appendix A of this report).
- Review of the design with the Sydney Olympic Park Authority Design Review Panel prior to lodgement of the development application.
- Review of the design at regular points during design development with the Sydney Olympic Park Authority Design Review Panel, including:
 - Following determination of the SSDA if any conditions of consent generate amendments to the design; and
 - Prior to the issue of a Crown Works Building Certificate (or each Certificate if the works are staged).

Any meetings of the DRP prior to the issue of a Crown Building Works Certificate will allow sufficient time for the comments of the DRP to be addressed to the satisfaction of the Certifying Authority prior to the issue of any certificate.

2. Outcomes of DRP Meeting 3 December 2019

A meeting of the SOPA DRP was held on 3 December 2019 to provide an update to the Panel on the project progress and address issues contained in the Panel's advice of 12 September 2019. A response to the Panel's advice from the 9 December 2019 meeting is as follows:

DRP Comment	Applicant Response
The Panel support the achievement of a 5 star Green Star rating for the stadium.	Noted
Solar management of the façade (northern façade in particular) should be developed and provided to the DRP. This will form the baseline for façade treatment for thermal comfort and the DRP will utilise this information to review design development against.	It was agreed at the meeting that the results of solar analysis will be provided to the DRP out of session and would be utilised by the DRP to assess any future developments of the design.
Further details regarding lighting should be presented to the DRP when they are developed	This will be presented to the DRP at a subsequent meeting and prior to the issue of any Crown Building Works Certificate.
The DRP encourages the applicant to work with SOPA and their plans for the public domain.	The Applicant wishes to ensure the Stadium integrates with any future public domain works proposed by SOPA. An offer has been made to brief the design teams currently competing in the design competition.