

1.3 DESIGN PRINCIPLES



A SAFE CONNECTED COMMUNITY

A welcoming neighbourhood that creates a sense of belonging and security whilst being connected to the wider local community of quality schools and local lifestyle amenity.

We aim to create resilient communities with shared spaces & encourage community support & engagement



SUSTAINABILITY & INNOVATION

We aim to create resilient spaces harnessing innovation, new technologies and a commitment to a sustainable community for all.

The proposal aims to increase Urban canopy & City greening improve Green infrastructure - with a 80% site coverage to mitigate Heat island effect



HARMONY WITH NATURE

Biophilic design principles influence the urban design to balance built form with natural landscape. Supported by generous open spaces, vegetated corridors and extensive tree-planting to enhance the beauty of the site.

We aim to create a Green Heart to the development with an emphasis on tree canopy, natural materials and sustainability



A HEALTHY LIFESTYLE

A master-plan designed for a healthy, positive lifestyle with parks and open spaces, an early learning centre, sporting facilities and nearby access to township amenities and transport.

We aim to enhance the existing site with connections to existing reserves and wider context

2.0 CONNECTING WITH COUNTRY

The project team have been engaging and running workshops with Danny Eastwood and James Eastwood. Danny Eastwood and James Eastwood have aided with Connecting with Country. This assistance was in two parts:

- Provide an initial response to the issue of Connecting with Country, and;
- Provide a pathway for us to integrate Connection with Country into our development process.

Deicorp invited Danny Eastwood and James Eastwood to participate in discussions with us about Aboriginal cultural values and design. The themes of connection to the Cattai Creek are key elements which emerged.

Danny and James have suggested a number of big ideas which have informed the landscape design response which "will be a strong narrative thread linking the proposal to place, culture and heritage". We are excited to be on this journey with Danny and James and will continue to collaborate and coordinate through to the design and documentation stages of the project.

2.1 FOUR THEMES



ACKNOWLEDGEMENT OF COUNTRY

Artist and Aboriginal Community Member thought it was extremely culturally important to acknowledge the Traditional Aboriginal Custodian of the land on which the project is sited



WATERWAYS

Cattai Creek has a deep cultural values to the Bedjigal (Darug People). The creek would have been key to every day Bedjigal life providing fresh water, food, natural resources and used as a camping site and ceremonial spiritual place.



BEDJIGAL (DARUG) LANGUAGE

Exploring the possibility of use of Indigenous language to be incorporated into the water feature design and the possible use of language used as way-finders embedded into pathways seating and interpretive artwork signage



NATIVE BIRDS (BINYANG) BIRD DREAMING

Exploring local Indigenous Dreaming Bird stories to be used as a main concept for artworks in the two entrances into the retail / residential building – and the possible connection to use of bird names, totems, art design throughout the plaza.

2.2 BIG IDEAS

The Public Domain Big Ideas which have been developed in collaboration with Public Art Curators. The curatorial themes include:

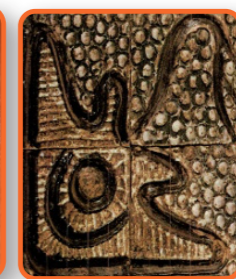
1. CONNECTION TO THE CATTAL CREEK
2. CONSIDERED NATURE
3. BRINGING WATER INTO THE DORAN DRIVE PLAZA
4. PROVIDING A PLACE FOR BOTH PEOPLE AND ANIMALS
5. CELEBRATING FIRST NATIONS PEOPLE SONGLINES ALONG THE CREEK THROUGH A SERIES OF SMALL AND MEDIUM SCALE MEETING PLACES AND INTERPRETIVE SIGNAGE
6. LOCAL MATERIALS SUCH AS SANDSTONE BENCHES AND CRUSHED SANDSTONE TO THE MEETING PLACES WITHIN THE PUBLIC DOMAIN AND ON THE PODIUM ARE PROPOSED TO RESPOND TO THE GEOLOGY OF THE PLACE
7. THE INTENTION TO INCORPORATE ENDEMIC AND NATIVE PLANT MATERIAL ACROSS ALL LEVELS OF THE DEVELOPMENT INCLUDING THE COMMUNAL OPEN SPACE PODIUM GARDENS

2.3 PUBLIC ART OPPORTUNITIES

DRAWINGS AND NAMES OF BINYAND (BIRDS) IN THE GROUND



DARUG	ENGLISH
GUGANAGGINA	KOOKABURRA
GARAB	BLACK COCKATOO
BUKBUK	OWL
WAGAN	CROW
BUNDALUK	RAINBOW LORIKEET



WATER FEATURE

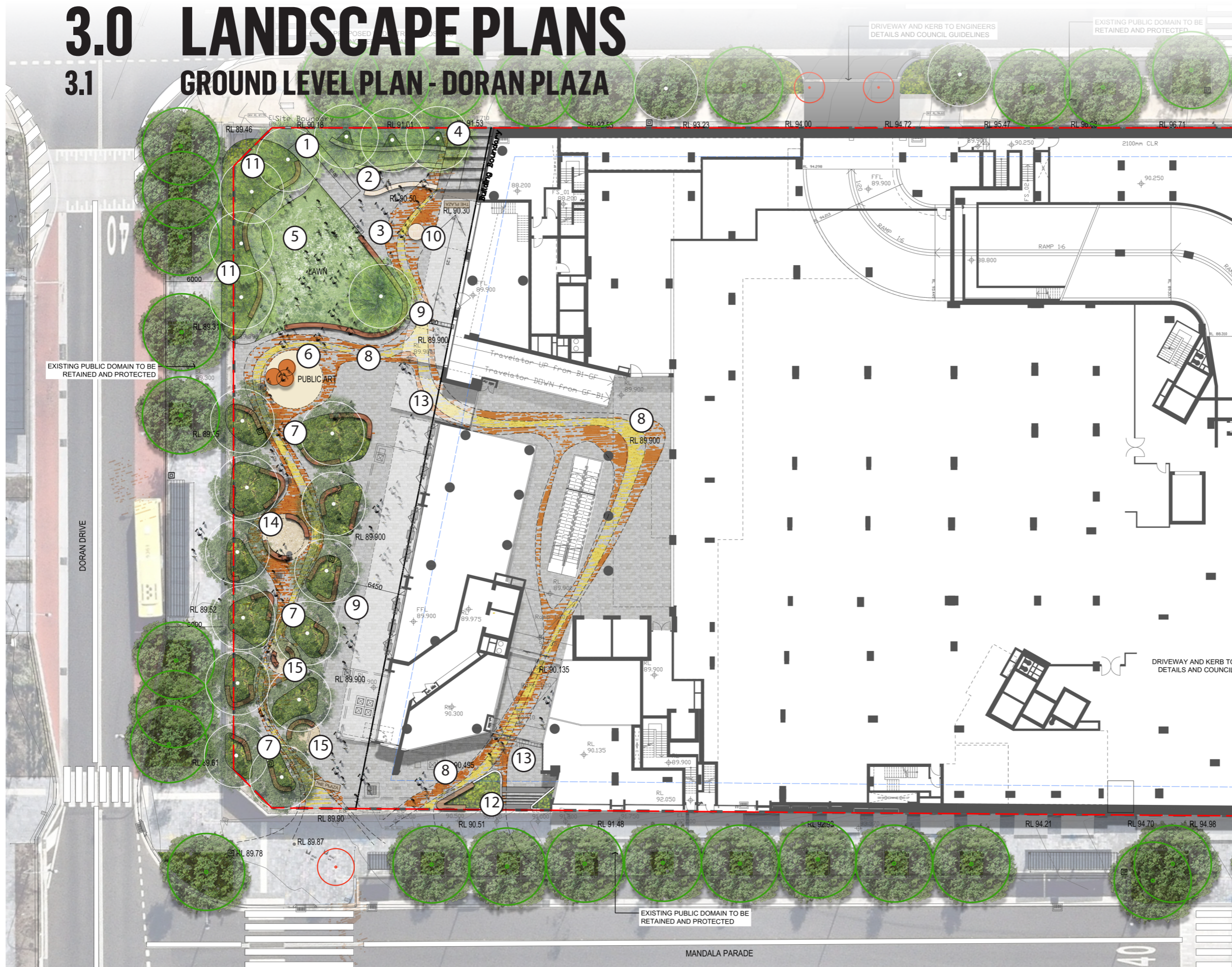


MURAL ART



3.0 LANDSCAPE PLANS

3.1 GROUND LEVEL PLAN - DORAN PLAZA



LEGEND:

- ① Entry threshold - with 1:30 gradient ramp to retail edges
- ② Amphitheatre seating walls for events and gatherings
Reflection spaces with Sandstone log seating walls and paving inserts.
- ③ Extended plaza, event and break out space
- ④ Stairs leading to De Clambe Drive with integrated amphitheatre edges
- ⑤ Central Lawn space for informal gatherings and play
- ⑥ Central Public Art Sculpture and central meeting space
- ⑦ Native tree grove - providing shade and native WSUD planters with seating benches
- ⑧ Paving pattern responding to the geology and topography of Cattai Creek - 3 rivers joining
- ⑨ Minimum 5m Hard-stand break-out space adjacent to retail - with awnings for shade
- ⑩ Ceremonial Plinth / Smoking Pit
- ⑪ Nature planting, framing the edge of site and lawn, with seating
- ⑫ Meaningful nature, seating and paving feature to entrance
- ⑬ Entry forecourts
- ⑭ Yarning circle with seating
- ⑮ Small meeting circles within nature tree groves



1:400@ A3

