

THIS DRAWING IS COPYRIGHT © OF TURNER. NO REPRODUCTION WITHOUT PERMISSION. UNLESS NOTED OTHERWISE THIS DRAWING IS NOT FOR CONSTRUCTION. ALL DIMENSIONS AND LEVELS ARE TO BE CHECKED ON SITE PRIOR TO THE COMMENCEMENT OF WORK. REPORT TURNER OF ANY DISCREPANCIES FOR CLARIFICATION BEFORE PROCEEDING WITH WORK. DRAWINGS ARE NOT TO BE MAILED. USE ONLY FIGURED DIMENSIONS. REFER TO CONSULTANT DOCUMENTATION FOR FURTHER INFORMATION DWG, IFC AND JFX FILES ARE UNCONTROLLED DOCUMENTS AND ARE ISSUED FOR INFORMATION ONLY.

Rev
04Project Title
Doran Drive

Scale 1:200 @A1 50% @A3 Project No. 19068 Drawn by IB North

TURNER

Level 7 **ONE** Oxford Street
Darlinghurst NSW 2010
AUSTRALIA

Legend:

BAL1

BALUSTRADE TYPE 1

Screen-finished 60mm high clear glass balustrade system with 50mm wide top rail, aluminium framing system to match PCF1

BAL2

BALUSTRADE TYPE 2

Screen-finished 60mm high clear glass balustrade system with 50mm wide top rail, aluminium framing system to match PCF1

BAL3

BALUSTRADE TYPE 3

Vertical 10x100 metal balustrade with 50mm wide top rail, colour and finish to match PCF2

BAL4

BALUSTRADE TYPE 4

Vertical 10x100 metal balustrade with 50mm wide top rail, colour and finish to match PCF2

BW1

BROWWORK TYPE 1

Horizontal Boreal Semimetal Silver or similar

BW2

BROWWORK TYPE 2

Horizontal Boreal Semimetal Silver with cobblestone detail or similar

BW3

BROWWORK TYPE 3

Vertical Boreal Semimetal Silver with solidator course brick detail or similar

BW4

BROWWORK TYPE 4

Horizontal Boreal 50 Pauc Cream or similar

BW5

BROWWORK TYPE 5

Horizontal Boreal 50 Pauc Cream with cobblestone detail or similar

BW6

BROWWORK TYPE 6

Vertical Boreal 50 Pauc Cream with solidator course brick detail or similar

BW7

BROWWORK TYPE 7

Horizontal Austral White Haven or similar

BW8

BROWWORK TYPE 8

Horizontal Austral White Haven with cobblestone detail or similar

BW9

BROWWORK TYPE 9

Horizontal Austral White Haven with solidator course brick detail or similar

C01

CONCRETE TYPE 1

Natural finish. Penetrating clear matte sealer over

C02

CONCRETE TYPE 2

Finish to match PF7

C03

CONCRETE TYPE 3

Finish to match PF8

C04

CONCRETE TYPE 4

Finish to match PF9

C05

CONCRETE TYPE 5

Public-DOC splatters. Finish to match PF2

C06

CONCRETE TYPE 6

Smooth concrete splatters, natural finish

PC0

CONCRETE PRECAST TYPE 1

Concrete panel, natural finish

CLD1

CLADDING TYPE 1

Aluminium cladding profile similar to Lysaght Longline 305, colour and finish to match PCF6

PCF1

POWDER COAT FINISH TYPE 1

Colour and finish similar to Dulux 'Electric Black'

PCF2

POWDER COAT FINISH TYPE 2

Colour and finish similar to Dulux 'Flat White'

PCF3

POWDER COAT FINISH TYPE 3

Colour and finish similar to Dulux 'Sensational Champagne'

PCF4

POWDER COAT FINISH TYPE 4

Colour and finish similar to Dulux 'Sensational Champagne'

PCF5

POWDER COAT FINISH TYPE 5

Colour and finish similar to Dulux 'Basalt Grey'

PCF6

POWDER COAT FINISH TYPE 6

Colour and finish similar to Dulux 'Woodland Grey'

SC1

SCREEN TYPE 1

Fixed vertical aluminium battens screen with 50mm top rail, colour and finish to match PCF1

SC2

SCREEN TYPE 2

Fixed vertical aluminium battens screen, colour and finish to match PCF1

SC3

SCREEN TYPE 3

Fixed vertical aluminium battens screen, colour and finish to match PCF4

SC4

SCREEN TYPE 4

Fixed horizontal aluminium battens screen, colour and finish to match PCF1

AWN1

AWNING TYPE 1

Metal clad awning, colour and finish to match PCF1

AWN2

AWNING TYPE 2

Metal clad awning, colour and finish to match PCF3

AWN3

AWNING TYPE 3

Metal clad awning, colour and finish to match PCF4

AWN4

AWNING TYPE 4

Perforated metal structure awning with clear glass panels, colour and finish to match PCF4

LV1

LOUIRE TYPE 1

Fixed horizontal louvre system, colour and finish to match PCF1

LV2

LOUIRE TYPE 2

Fixed horizontal louvre system, colour and finish to match PCF3

LV3

LOUIRE TYPE 3

Fixed horizontal louvre system, colour and finish to match PCF4

LV4

LOUIRE TYPE 4

Fixed horizontal louvre system, colour and finish to match PCF6

LV5

LOUIRE TYPE 5

Fixed vertical louvre system, colour and finish to match PCF3

G01

GLASS, CLEAR, TYPE 1

Clear glass, decorative powder coated aluminium framing system to match PCF1

G02

GLASS, CLEAR, TYPE 2

Clear glass, decorative powder coated aluminium framing system to match PCF4

G03

GLASS, CLEAR, TYPE 3

Clear glass, decorative powder coated aluminium framing system to match PCF5

G04

GLASS, CLEAR, TYPE 4

Clear glass louvre system, powder coated aluminium framing system to match PCF1

G0B1

GLASS, COLOUR-BACK, TYPE 1

Colour back glass panel to match PF3, powder coated aluminium framing system to match PCF1

G0B2

GLASS, COLOUR-BACK, TYPE 2

Colour back glass panel to match PF4, powder coated aluminium framing system to match PCF1

G0B3

GLASS, COLOUR-BACK, TYPE 3

Colour back glass panel to match PF5, powder coated aluminium framing system to match PCF1

G0B4

GLASS, COLOUR-BACK, TYPE 4

Colour back glass panel to match PF6, powder coated aluminium framing system to match PCF1

G0B5

GLASS, COLOUR-BACK, TYPE 5

Colour back glass panel to match PF9, powder coated aluminium framing system to match PCF4

G0T1

GLASS, TINTED, TYPE 1

Tinted glass, decorative powder coated aluminium system to match PCF1

PF1

PAINT FINISH TYPE 1

Colour and finish similar to Dulux 'Dorset'

PF2

PAINT FINISH TYPE 2

Colour and finish similar to Dulux 'Natural White'

PF3

PAINT FINISH TYPE 3

Colour and finish similar to Dulux 'Butter'

PF4

PAINT FINISH TYPE 4

Colour and finish similar to Dulux 'Eggshell Gold'

PF5

PAINT FINISH TYPE 5

Colour and finish similar to Dulux 'Vegan Caper'

PF6

PAINT FINISH TYPE 6

Colour and finish similar to Dulux 'Tobaccony'

PF7

PAINT FINISH TYPE 7

Colour and finish similar to Dulux 'Tranquil Retreat'

PF8

PAINT FINISH TYPE 8

Colour and finish similar to Dulux 'Endless Dusk'

S01

SIGNAGE TYPE 1

The corner of Doran Drive and Mandala Parade

S02

SIGNAGE TYPE 2

The corner of Doran Drive and De Cienega Drive

S03

SIGNAGE TYPE 3

The corner of Andalusian Way and Doran Drive

S04

SIGNAGE TYPE 4

Car park Entry/Exit Signage

NOTES

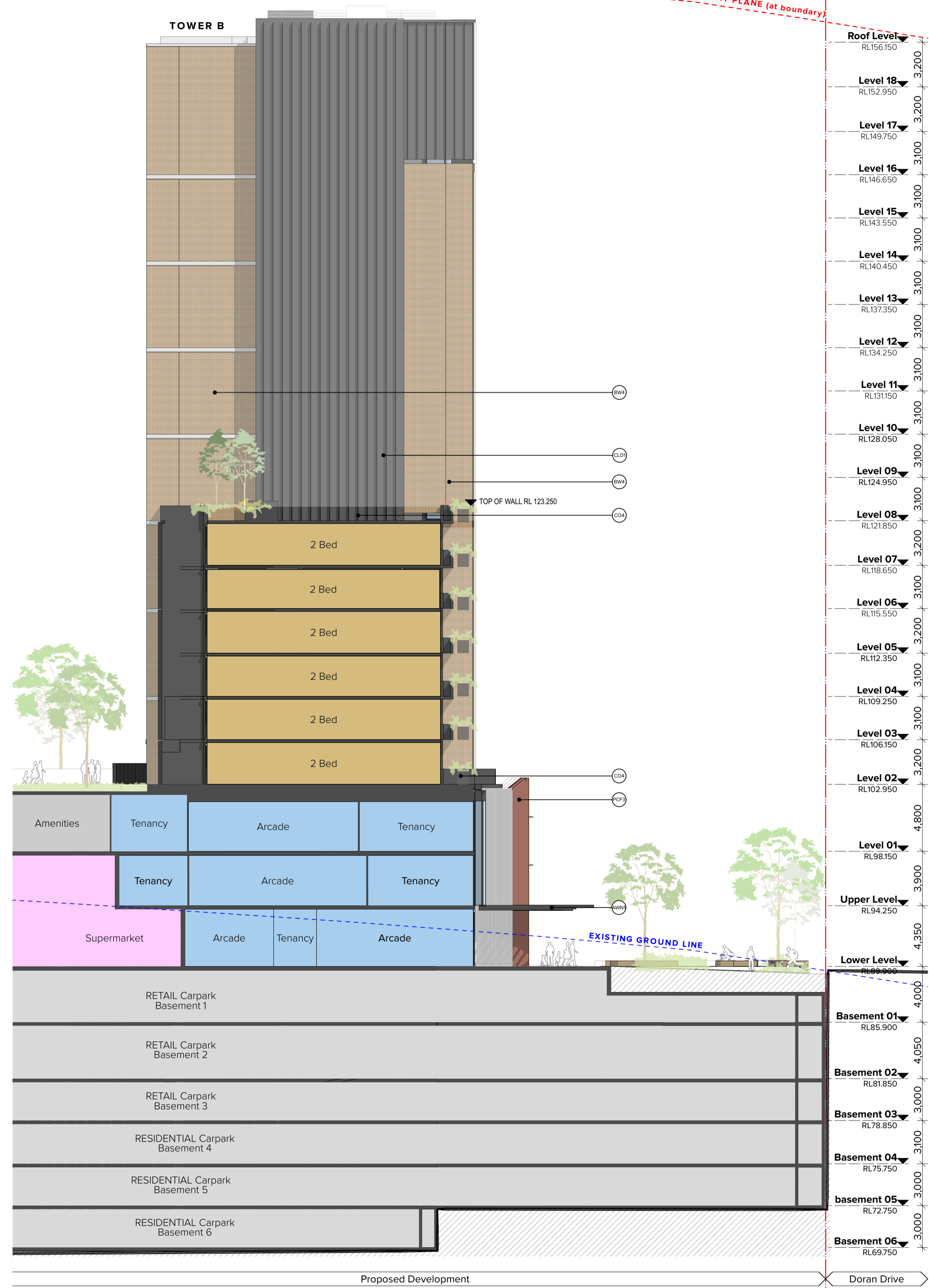
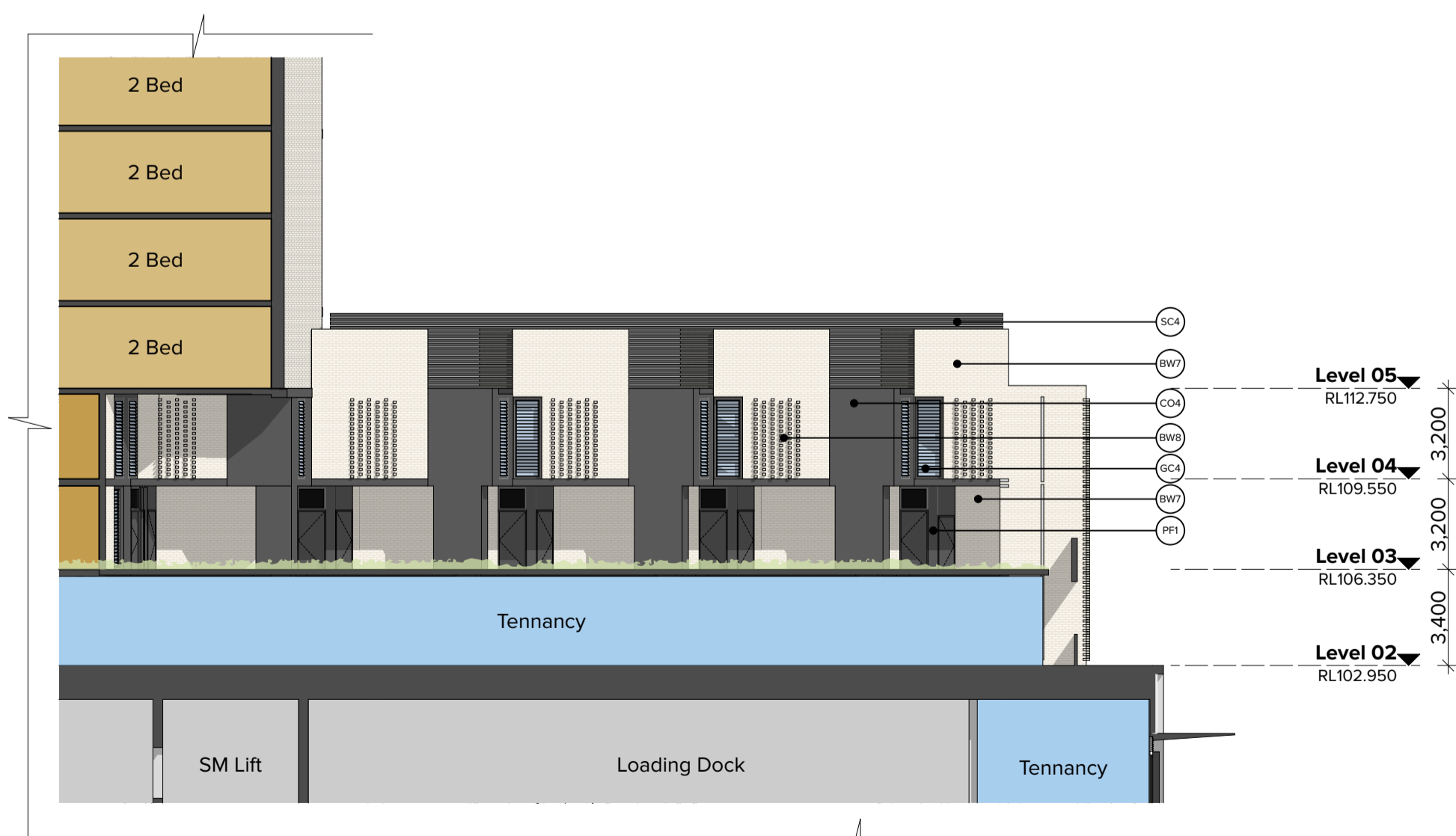
THIS DRAWING IS COPYRIGHT © OF TURNER. NO REPRODUCTION WITHOUT PERMISSION. UNLESS NOTED OTHERWISE THIS DRAWING IS NOT FOR CONSTRUCTION. ALL DIMENSIONS AND LEVELS ARE TO BE CHECKED ON SITE PRIOR TO THE COMMENCEMENT OF WORK.

NO PART OF THIS DRAWING IS TO BE USED FOR ANY PURPOSES WITHOUT THE WRITTEN PERMISSION OF TURNER. DRAWINGS ARE NOT TO BE SCALED. USE ONLY FIGURED DIMENSIONS. REFER TO CONSULTANT DOCUMENTATION FOR FURTHER INFORMATION (DWG, PCF AND BW) AS WELL AS ANY POLICIES DOCUMENTS AND ARE ISSUED FOR INFORMATION ONLY.

The drawing shows two towers, Tower A and Tower C, with their internal elevations. Tower A is a multi-story building with a central core and multiple wings. Tower C is a taller, more slender building. The drawing includes floor levels, room layouts, and site boundaries. Key features include:
 - **Roof Level:** RL162.550
 - **Level 20:** RL159.350
 - **Level 19:** RL156.250
 - **Level 18:** RL153.150
 - **Level 17:** RL150.050
 - **Level 16:** RL146.950
 - **Level 15:** RL143.850
 - **Level 14:** RL140.750
 - **Level 13:** RL137.650
 - **Level 12:** RL134.550
 - **Level 11:** RL131.450
 - **Level 10:** RL128.350
 - **Level 09:** RL125.250
 - **Level 08:** RL122.150
 - **Level 07:** RL119.050
 - **Level 06:** RL115.950
 - **Level 05:** RL112.850
 - **Level 04:** RL109.750
 - **Level 03:** RL106.650
 - **Level 02:** RL103.550
 - **Level 01:** RL100.450
 - **Upper Level:** RL97.350
 - **Lower Level:** RL94.250
 - **Basement 01:** RL91.150
 - **Basement 02:** RL88.050
 - **Basement 03:** RL84.950
 - **Basement 04:** RL81.850
 - **Basement 05:** RL78.750
 - **Basement 06:** RL75.650
 - **Basement 07:** RL72.550
 - **Basement 08:** RL69.450
 - **Basement 09:** RL66.350
 - **Basement 10:** RL63.250
 - **Basement 11:** RL60.150
 - **Basement 12:** RL57.050
 - **Basement 13:** RL53.950
 - **Basement 14:** RL50.850
 - **Basement 15:** RL47.750
 - **Basement 16:** RL44.650
 - **Basement 17:** RL41.550
 - **Basement 18:** RL38.450
 - **Basement 19:** RL35.350
 - **Basement 20:** RL32.250
 - **Basement 21:** RL29.150
 - **Basement 22:** RL26.050
 - **Basement 23:** RL22.950
 - **Basement 24:** RL19.850
 - **Basement 25:** RL16.750
 - **Basement 26:** RL13.650
 - **Basement 27:** RL10.550
 - **Basement 28:** RL7.450
 - **Basement 29:** RL4.350
 - **Basement 30:** RL1.250
 - **Basement 31:** RL-1.850
 - **Basement 32:** RL-4.950
 - **Basement 33:** RL-8.050
 - **Basement 34:** RL-11.150
 - **Basement 35:** RL-14.250
 - **Basement 36:** RL-17.350
 - **Basement 37:** RL-20.450
 - **Basement 38:** RL-23.550
 - **Basement 39:** RL-26.650
 - **Basement 40:** RL-29.750
 - **Basement 41:** RL-32.850
 - **Basement 42:** RL-35.950
 - **Basement 43:** RL-39.050
 - **Basement 44:** RL-42.150
 - **Basement 45:** RL-45.250
 - **Basement 46:** RL-48.350
 - **Basement 47:** RL-51.450
 - **Basement 48:** RL-54.550
 - **Basement 49:** RL-57.650
 - **Basement 50:** RL-60.750
 - **Basement 51:** RL-63.850
 - **Basement 52:** RL-66.950
 - **Basement 53:** RL-70.050
 - **Basement 54:** RL-73.150
 - **Basement 55:** RL-76.250
 - **Basement 56:** RL-79.350
 - **Basement 57:** RL-82.450
 - **Basement 58:** RL-85.550
 - **Basement 59:** RL-88.650
 - **Basement 60:** RL-91.750
 - **Basement 61:** RL-94.850
 - **Basement 62:** RL-97.950
 - **Basement 63:** RL-101.050
 - **Basement 64:** RL-104.150
 - **Basement 65:** RL-107.250
 - **Basement 66:** RL-110.350
 - **Basement 67:** RL-113.450
 - **Basement 68:** RL-116.550
 - **Basement 69:** RL-119.650
 - **Basement 70:** RL-122.750
 - **Basement 71:** RL-125.850
 - **Basement 72:** RL-128.950
 - **Basement 73:** RL-132.050
 - **Basement 74:** RL-135.150
 - **Basement 75:** RL-138.250
 - **Basement 76:** RL-141.350
 - **Basement 77:** RL-144.450
 - **Basement 78:** RL-147.550
 - **Basement 79:** RL-150.650
 - **Basement 80:** RL-153.750
 - **Basement 81:** RL-156.850
 - **Basement 82:** RL-159.950
 - **Basement 83:** RL-163.050
 - **Basement 84:** RL-166.150
 - **Basement 85:** RL-169.250
 - **Basement 86:** RL-172.350
 - **Basement 87:** RL-175.450
 - **Basement 88:** RL-178.550
 - **Basement 89:** RL-181.650
 - **Basement 90:** RL-184.750
 - **Basement 91:** RL-187.850
 - **Basement 92:** RL-190.950
 - **Basement 93:** RL-194.050
 - **Basement 94:** RL-197.150
 - **Basement 95:** RL-200.250
 - **Basement 96:** RL-203.350
 - **Basement 97:** RL-206.450
 - **Basement 98:** RL-209.550
 - **Basement 99:** RL-212.650
 - **Basement 100:** RL-215.750
 - **Basement 101:** RL-218.850
 - **Basement 102:** RL-221.950
 - **Basement 103:** RL-225.050
 - **Basement 104:** RL-228.150
 - **Basement 105:** RL-231.250
 - **Basement 106:** RL-234.350
 - **Basement 107:** RL-237.450
 - **Basement 108:** RL-240.550
 - **Basement 109:** RL-243.650
 - **Basement 110:** RL-246.750
 - **Basement 111:** RL-249.850
 - **Basement 112:** RL-252.950
 - **Basement 113:** RL-256.050
 - **Basement 114:** RL-259.150
 - **Basement 115:** RL-262.250
 - **Basement 116:** RL-265.350
 - **Basement 117:** RL-268.450
 - **Basement 118:** RL-271.550
 - **Basement 119:** RL-274.650
 - **Basement 120:** RL-277.750
 - **Basement 121:** RL-280.850
 - **Basement 122:** RL-283.950
 - **Basement 123:** RL-287.050
 - **Basement 124:** RL-290.150
 - **Basement 125:** RL-293.250
 - **Basement 126:** RL-296.350
 - **Basement 127:** RL-299.450
 - **Basement 128:** RL-302.550
 - **Basement 129:** RL-305.650
 - **Basement 130:** RL-308.750
 - **Basement 131:** RL-311.850
 - **Basement 132:** RL-314.950
 - **Basement 133:** RL-318.050
 - **Basement 134:** RL-321.150
 - **Basement 135:** RL-324.250
 - **Basement 136:** RL-327.350
 - **Basement 137:** RL-330.450
 - **Basement 138:** RL-333.550
 - **Basement 139:** RL-336.650
 - **Basement 140:** RL-339.750
 - **Basement 141:** RL-342.850
 - **Basement 142:** RL-345.950
 - **Basement 143:** RL-349.050
 - **Basement 144:** RL-352.150
 - **Basement 145:** RL-355.250
 - **Basement 146:** RL-358.350
 - **Basement 147:** RL-361.450
 - **Basement 148:** RL-364.550
 - **Basement 149:** RL-367.650
 - **Basement 150:** RL-370.750
 - **Basement 151:** RL-373.850
 - **Basement 152:** RL-376.950
 - **Basement 153:** RL-380.050
 - **Basement 154:** RL-383.150
 - **Basement 155:** RL-386.250
 - **Basement 156:** RL-389.350
 - **Basement 157:** RL-392.450
 - **Basement 158:** RL-395.550
 - **Basement 159:** RL-398.650
 - **Basement 160:** RL-401.750
 - **Basement 161:** RL-404.850
 - **Basement 162:** RL-407.950
 - **Basement 163:** RL-411.050
 - **Basement 164:** RL-414.150
 - **Basement 165:** RL-417.250
 - **Basement 166:** RL-420.350
 - **Basement 167:** RL-423.450
 - **Basement 168:** RL-426.550
 - **Basement 169:** RL-429.650
 - **Basement 170:** RL-432.750
 - **Basement 171:** RL-435.850
 - **Basement 172:** RL-438.950
 - **Basement 173:** RL-442.050
 - **Basement 174:** RL-445.150
 - **Basement 175:** RL-448.250
 - **Basement 176:** RL-451.350
 - **Basement 177:** RL-454.450
 - **Basement 178:** RL-457.550
 - **Basement 179:** RL-460.650
 - **Basement 180:** RL-463.750
 - **Basement 181:** RL-466.850
 - **Basement 182:** RL-469.950
 - **Basement 183:** RL-473.050
 - **Basement 184:** RL-476.150
 - **Basement 185:** RL-479.250
 - **Basement 186:** RL-482.350
 - **Basement 187:** RL-485.450
 - **Basement 188:** RL-488.550
 - **Basement 189:** RL-491.650
 - **Basement 190:** RL-494.750
 - **Basement 191:** RL-497.850
 - **Basement 192:** RL-500.950
 - **Basement 193:** RL-504.050
 - **Basement 194:** RL-507.150
 - **Basement 195:** RL-510.250
 - **Basement 196:** RL-513.350
 - **Basement 197:** RL-516.450
 - **Basement 198:** RL-519.550
 - **Basement 199:** RL-522.650
 - **Basement 200:** RL-525.750
 - **Basement 201:** RL-528.850
 - **Basement 202:** RL-531.950
 - **Basement 203:** RL-535.050
 - **Basement 204:** RL-538.150
 - **Basement 205:** RL-541.250
 - **Basement 206:** RL-544.350
 - **Basement 207:** RL-547.450
 - **Basement 208:** RL-550.550
 - **Basement 209:** RL-553.650
 - **Basement 210:** RL-556.750
 - **Basement 211:** RL-559.850
 - **Basement 212:** RL-562.950
 - **Basement 213:** RL-566.050
 - **Basement 214:** RL-569.150
 - **Basement 215:** RL-572.250
 - **Basement 216:** RL-575.350
 - **Basement 217:** RL-578.450
 - **Basement 218:** RL-581.550
 - **Basement 219:** RL-584.650
 - **Basement 220:** RL-587.750
 - **Basement 221:** RL-590.850
 - **Basement 222:** RL-593.950
 - **Basement 223:** RL-597.050
 - **Basement 224:** RL-600.150
 - **Basement 225:** RL-603.250
 - **Basement 226:** RL-606.350
 - **Basement 227:** RL-609.450
 - **Basement 228:** RL-612.550
 - **Basement 229:** RL-615.650
 - **Basement 230:** RL-618.750
 - **Basement 231:** RL-621.850
 - **Basement 232:** RL-624.950
 - **Basement 233:** RL-628.050
 - **Basement 234:** RL-631.150
 - **Basement 235:** RL-634.250
 - **Basement 236:** RL-637.350
 - **Basement 237:** RL-640.450
 - **Basement 238:** RL-643.550
 - **Basement 239:** RL-646.650
 - **Basement 240:** RL-649.750
 - **Basement 241:** RL-652.850
 - **Basement 242:** RL-655.950
 - **Basement 243:** RL-659.050
 - **Basement 244:** RL-662.150
 - **Basement 245:** RL-665.250
 - **Basement 246:** RL-668.350
 - **Basement 247:** RL-671.450
 - **Basement 248:** RL-674.550
 - **Basement 249:** RL-677.650
 - **Basement 250:** RL-680.750
 - **Basement 251:** RL-683.850
 - **Basement 252:** RL-686.950
 - **Basement 253:** RL-690.050
 - **Basement 254:** RL-693.150
 - **Basement 255:** RL-696.250
 - **Basement 256:** RL-699.350
 - **Basement 257:** RL-702.450
 - **Basement 258:** RL-705.550
 - **Basement 259:** RL-708.650
 - **Basement 260:** RL-711.750
 - **Basement 261:** RL-714.850
 - **Basement 262:** RL-717.950
 - **Basement 263:** RL-721.050
 - **Basement 264:** RL-724.150
 - **Basement 265:** RL-727.250
 - **Basement 266:** RL-730.350
 - **Basement 267:** RL-733.450
 - **Basement 268:** RL-736.550
 - **Basement 269:** RL-739.650
 - **Basement 270:** RL-742.750
 - **Basement 271:** RL-745.850
 - **Basement 272:** RL-748.950
 - **Basement 273:** RL-752.050
 - **Basement 274:** RL-755.150
 - **Basement 275:** RL-758.250
 - **Basement 276:** RL-761.350
 - **Basement 277:** RL-764.450
 - **Basement 278:** RL-767.550
 - **Basement 279:** RL-770.650
 - **Basement 280:** RL-773.750
 - **Basement 281:** RL-776.850
 - **Basement 282:** RL-779.950
 - **Basement 283:** RL-783.050
 - **Basement 284:** RL-786.150
 - **Basement 285:** RL-789.250
 - **Basement 286:** RL-792.350
 - **Basement 287:** RL-795.450
 - **Basement 288:** RL-798.550
 - **Basement 289:** RL-801.650
 - **Basement 290:** RL-804.750
 - **Basement 291:** RL-807.850
 - **Basement 292:** RL-810.950
 - **Basement 293:** RL-814.050
 - **Basement 294:** RL-817.150
 - **Basement 295:** RL-820.250
 - **Basement 296:** RL-823.350
 - **Basement 297:** RL-826.450
 - **Basement 298:** RL-829.550
 - **Basement 299:** RL-832.650
 - **Basement 300:** RL-835.750
 - **Basement 301:** RL-838.850
 - **Basement 302:** RL-841.950
 - **Basement 303:** RL-845.050
 - **Basement 304:** RL-848.150
 - **Basement 305:** RL-851.250
 - **Basement 306:** RL-854.350
 - **Basement 307:** RL-857.450
 - **Basement 308:** RL-860.550
 - **Basement 309:** RL-863.650
 - **Basement 310:** RL-866.750
 - **Basement 311:** RL-869.850
 - **Basement 312:** RL-872.950
 - **Basement 313:** RL-876.050
 - **Basement 314:** RL-879.150
 - **Basement 315:** RL-882.250
 - **Basement 316:** RL-885.350
 - **Basement 317:** RL-888.450
 - **Basement 318:** RL-891.550
 - **Basement 319:** RL-894.650
 - **Basement 320:** RL-897.750
 - **Basement 321:** RL-900.850
 - **Basement 322:** RL-903.950
 - **Basement 323:** RL-907.050
 - **Basement 324:** RL-910.150
 - **Basement 325:** RL-913.250
 - **Basement 326:** RL-916.350
 - **Basement 327:** RL-919.450
 - **Basement 328:** RL-922.550
 - **Basement 329:** RL-925.650
 - **Basement 330:** RL-928.750
 - **Basement 331:** RL-931.850
 - **Basement 332:** RL-934.950
 - **Basement 333:** RL-938.050
 - **Basement 334:** RL-941.150
 - **Basement 335:** RL-944.250
 - **Basement 336:** RL-947.350
 - **Basement 337:** RL-950.450
 - **Basement 338:** RL-953.550
 - **Basement 339:** RL-956.650
 - **Basement 340:** RL-959.750
 - **Basement 341:** RL-962.850
 - **Basement 342:** RL-965.950
 - **Basement 343:** RL-969.050
 - **Basement 344:** RL-972.150
 - **Basement 345:** RL-975.250
 - **Basement 346:** RL-978.350
 - **Basement 347:** RL-981.450
 - **Basement 348:** RL-984.550
 - **Basement 349:** RL-987.650
 - **Basement 350:** RL-990.750
 - **Basement 351:** RL-993.850
 - **Basement 352:** RL-996.950
 - **Basement 353:** RL-1000.050
 - **Basement 354:** RL-1003.150
 - **Basement 355:** RL-1006.250
 - **Basement 356:** RL-1009.350
 - **Basement 357:** RL-1012.450
 - **Basement 358:** RL-1015.550
 - **Basement 359:** RL-1018.650
 - **Basement 360:** RL-1021.750
 - **Basement 361:** RL-1024.850
 - **Basement 362:** RL-1027.950
 - **Basement 363:** RL-1031.050
 - **Basement 364:** RL-1034.150
 - **Basement 365:** RL-1037.250
 - **Basement 366:** RL-1040.350
 - <

Legend:

	BALUSTRAE TYPE 1 Semi-translucent, light green glass balustrade system with stainless steel handrail, stainless framing system to match PC1
BAL1	BALUSTRAE TYPE 2 Semi-translucent, light green glass balustrade system with 50mm wide rail, aluminium framing system to match PC1
BAL2	BALUSTRAE TYPE 3 Semi-translucent, light green glass balustrade with 50mm wide rail, colour and finish to match PC1
BAL3	BALUSTRAE TYPE 4 Vector 4000 semi-transparent with 50mm wide rail, colour and finish to match PC1
BAL4	BALUSTRAE TYPE 5 Vector 4000 semi-transparent with 50mm wide rail, colour and finish to match PC1
BW1	BROOKLYN TYPE 1 Horizontal Bevel Sentinel Screen Sash or similar
BW2	BROOKLYN TYPE 2 Horizontal Bevel Sentinel Screen with collecting detail or similar
BW3	BROOKLYN TYPE 3 Horizontal Bevel Sentinel Screen with colour concrete brick detail or similar
BW4	BROOKLYN TYPE 4 Horizontal Bevel Sentinel Screen Sash or similar
BW5	BROOKLYN TYPE 5 Horizontal Bevel Sentinel Screen with collecting detail or similar
BW6	BROOKLYN TYPE 6 Horizontal Bevel Sentinel Screen with wider colour brick detail or similar
BW7	BROOKLYN TYPE 7 Horizontal Ashted White Heaven or similar
BW8	BROOKLYN TYPE 8 Horizontal Ashted White Heaven with collecting detail or similar
BW9	BROOKLYN TYPE 9 Horizontal Ashted White Heaven with colour concrete brick detail or similar
C1	CONCRETE TYPE 1 Natural finish, Pressing brick made easier over
C2	CONCRETE TYPE 2 Finish to match PC1
C3	CONCRETE TYPE 3 Finish to match PC1
C4	CONCRETE TYPE 4 Finish to match PC1
C5	CONCRETE TYPE 5 Puffy GRC, specific, finish to match PC2
C6	CONCRETE TYPE 6 Smooth concrete, square, natural finish
C7	CONCRETE PRECAST TYPE 1 Cladding panel, natural finish
CLD1	CLADDING TYPE 1 Aluminium or stainless steel system to 'uplight' (longest 305, colour and finish to match PC1)
PC1	POWDER COAT FINISH TYPE 1 Colour and finish similar to Dulux 'Tresure Blue'
PC2	POWDER COAT FINISH TYPE 2 Colour and finish similar to Dulux 'The Whiter'
PC3	POWDER COAT FINISH TYPE 3 Colour and finish similar to Dulux 'Barchland Brown'
PC4	POWDER COAT FINISH TYPE 4 Colour and finish similar to Dulux 'Sensational Champagne'
PC5	POWDER COAT FINISH TYPE 5 Colour and finish similar to Dulux 'Bassali Grey'
PC6	POWDER COAT FINISH TYPE 6 Colour and finish similar to Dulux 'Woodland Grey'
SC1	SCREEN TYPE 1 Fixed vertical aluminium pattern screen with 50mm rail, colour and finish to match PC1
SC2	SCREEN TYPE 2 Fixed vertical aluminium pattern screen, colour and finish to match PC1
SC3	SCREEN TYPE 3 Fixed vertical aluminium pattern screen, colour and finish to match PC1
SC4	SCREEN TYPE 4 Fixed horizontal aluminium pattern screen, colour and finish to match PC1
WIN1	WINDOW TYPE 1 Metal clad window, colour and finish to match PC1
WIN2	WINDOW TYPE 2 Metal clad window, colour and finish to match PC1
WIN3	WINDOW TYPE 3 Metal clad window, colour and finish to match PC1
WIN4	WINDOW TYPE 4 Metal clad window, colour and finish to match PC1
L1	LOUVER TYPE 1 Fixed vertical louvre system, colour and finish to match PC1
L2	LOUVER TYPE 2 Fixed horizontal louvre system, colour and finish to match PC1
L3	LOUVER TYPE 3 Fixed horizontal louvre system, colour and finish to match PC1
L4	LOUVER TYPE 4 Fixed horizontal louvre system, colour and finish to match PC1
L5	LOUVER TYPE 5 Fixed vertical louvre system, colour and finish to match PC1
GL1	GLASS GLAZER TYPE 1 Clear glass, double powder coated aluminium framing system to match PC1
GL2	GLASS GLAZER TYPE 2 Clear glass, double powder coated aluminium framing system to match PC1
GL3	GLASS GLAZER TYPE 3 Clear glass, decorative powder coated aluminium framing system to match PC1
GL4	GLASS GLAZER TYPE 4 Clear glass louvre system, powder coated aluminium framing to match PC1
GL5	GLASS GLAZER TYPE 5 Clear glass, double powder coated aluminium framing system to match PC1
GL6	GLASS GLAZER TYPE 6 Clear glass, double powder coated aluminium framing system to match PC1
GL7	GLASS GLAZER TYPE 7 Clear glass, double powder coated aluminium framing system to match PC1
GL8	GLASS GLAZER TYPE 8 Clear glass, double powder coated aluminium framing system to match PC1
GL9	GLASS GLAZER TYPE 9 Clear glass, double powder coated aluminium framing system to match PC1
GL10	GLASS GLAZER TYPE 10 Clear glass, double powder coated aluminium framing system to match PC1
GL11	GLASS GLAZER TYPE 11 Tinted glass, double powder coated aluminium system to match PC1
RF1	RAMT FINISH TYPE 1 Colour and finish similar to Dulux 'Domino'
RF2	RAMT FINISH TYPE 2 Colour and finish similar to Dulux 'Natural White'
RF3	RAMT FINISH TYPE 3 Colour and finish similar to Dulux 'Butter'
RF4	RAMT FINISH TYPE 4 Colour and finish similar to Dulux 'Tiggen Gold'
RF5	RAMT FINISH TYPE 5 Colour and finish similar to Dulux 'Reign Capt'
RF6	RAMT FINISH TYPE 6 Colour and finish similar to Dulux 'Tobemany'
RF7	RAMT FINISH TYPE 7 Colour and finish similar to Dulux 'Tangut Reserve'
RF8	RAMT FINISH TYPE 8 Colour and finish similar to Dulux 'Trendus Quai'
S1	SIGNAGE TYPE 1 The Corner of Dorset Drive and Macclesfield Parade
S2	SIGNAGE TYPE 2 The Corner of Dorset Drive and De Cribble Drive
S3	SIGNAGE TYPE 3 The Corner of Dorset Drive and Dorset Drive
S4	SIGNAGE TYPE 4 The Corner of Dorset Drive

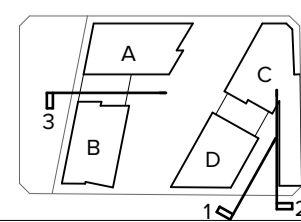


NOTES

THIS DRAWING IS COPYRIGHT © OF TURNER. NO REPRODUCTION WITHOUT PERMISSION. UNLESS NOTED OTHERWISE THIS DRAWING IS NOT FOR CONSTRUCTION. ALL DIMENSIONS AND LEVELS ARE TO BE CHECKED ON SITE PRIOR TO THE COMMENCEMENT OF WORK. INFORM TURNER OF ANY DISCREPANCIES FOR CLARIFICATION BEFORE PROCEEDING WITH WORK. DRAWINGS ARE NOT TO BE SCALED. USE ONLY FIGURED DIMENSIONS. REFER TO CONSULTANT DOCUMENTATION FOR FURTHER INFORMATION.DWG, IFC AND BIMX FILES ARE UNCONTROLLED DOCUMENTS AND ARE ISSUED FOR INFORMATION ONLY.

DLCS Quality Endorsed Company ISO 9001:2015, Registration Number 20476
Nominated Architect: Nicholas Turner 6665, AEN 86 054 034 911

CLIENT
Deicorp




Rev	Date	Approved by	Revision Notes
03	06.07.21	JMC	DA Submission
04	18.03.22	JMC	For Coordination
05	21.03.21	JMC	For Coordination
06	29.03.22	JMC	For SDRP 4
07	01.04.22	JMC	Draft Amended DA
08	04.04.22	JMC	For Consultant Coordination
09	08.04.22	JMC	For Draft DA
10	14.04.22	JMC	For Draft DA
11	21.04.22	JMC	For DA Submission

Project Title
Doran Drive
Doran Drive, Castle Hill Castle Hill NSW 2154 Australia

Drawing Title
GA SECTIONS
Internal Elevation Buildings B & D

Scale	Project No.	Drawn by	North
1:200 @A1, 50%@A3	19068	JB	
Status	Dwg No.	Rev	
DA Submission	DA-310-401	11	



Level 7 ONE Oxford Street
 Darlinghurst NSW 2010
 AUSTRALIA

T +61 2 8968 0000
 F +61 2 8968 0000
turnerstudio.com.au