

# RANDWICK CAMPUS REDEVELOPMENT

## INTEGRATED ACUTE SERVICES BUILDING (IASB) ADDITION

SSDA LANDSCAPE DESIGN REPORT

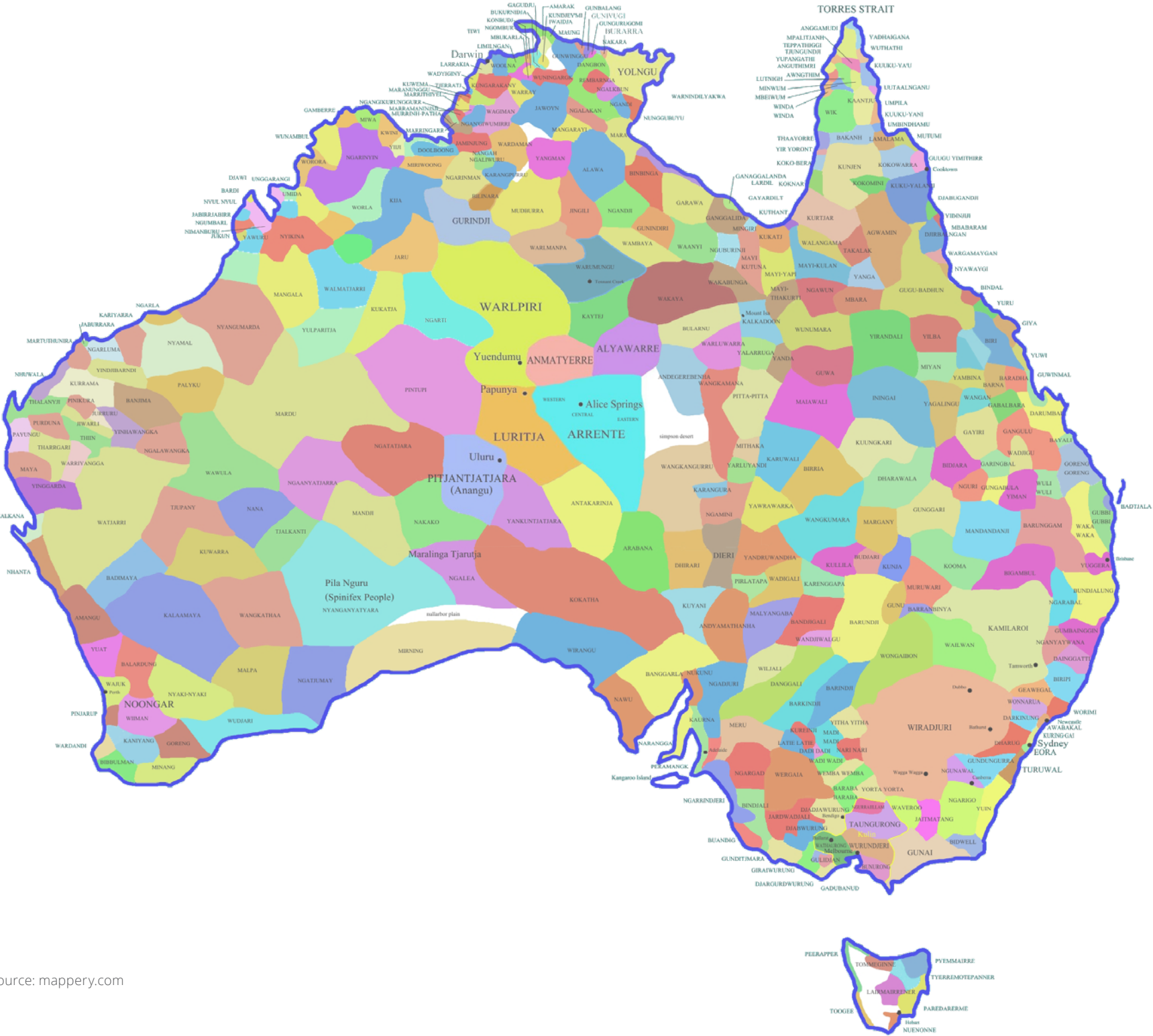
- UPDATED

17 OCT 2019

---

ASPECT Studios™

ASPECT Studios acknowledges the traditional owners of the land we work on and travel through and we pay our respects to elders past and present.



Map source: mappery.com

Document Information

Project Number:	S17032
Project Name:	Stage 1 of The Prince of Wales Hospital Reconfiguration and Expansion (Randwick Campus Redevelopment)
Document Title:	Randwick Campus Redevelopment - Integrated Acute Services Building Addition Landscape Design Report
Revision   Date Issued:	Refer Document Control below
Status:	SSDA

Document Control

Rev	Date	Description	Prepared By	Reviewed By	Approved By
1	07/05/19	DRAFT ISSUE	SB	JP	KL
2	05/07/19	SSDA ISSUE	SB	JP	KL
3	12/07/19	SSDA ISSUE	SB	JP	KL
4	16/07/19	SSDA ISSUE	SB	JP	KL
5	07/08/19	SSDA ISSUE	SB	JP	KL
6	04/10/19	SSDA DRAFT RESPONSE UPDATE	LD/CK	JK	KL
7	11/10/19	SSDA RESPONSE UPDATE	LD/CK	JK	KL
8	17/10/19	SSDA RESPONSE UPDATE	LD/CK	JK	KL
9	17/10/19	SSDA RESPONSE UPDATE	LD/CK	JK	KL

Contents

1.0 INTRODUCTION1

Project Summary

Context

2.0 DESIGN PRINCIPLES2

Masterplan Design Principles

Hospital Road Design Moves

3.0 PROJECT SCOPE5

Project Scope

4.0 LANDSCAPE PROPOSALS6

Level 00 Landscape General Arrangement

Level 00 Landscape Section

Material Palette



# 1.0 Introduction

## Project Summary

This Landscape Design Report for the proposed Integrated ASB Addition is an addendum to the Landscape Design Report prepared for SSD 9113 Prince of Wales Hospital Expansion Stage 1. The contents of this report relate only to the additional core scope elements of the Integrated Acute Services Building (IASB) Addition, these being:

- UNSW Eastern Extension (Base Building only)
- Associated modifications with the ASB
- Lowering of Hospital Road
- Landscaping

As a collaborative design effort, ASPECT Studios is working closely with the project team, including BVN/Terroir (architecture), Enstruct (civil and structural engineering) and ARUP (traffic), to ensure the project vision and aspirations are met across all disciplines.

## Context

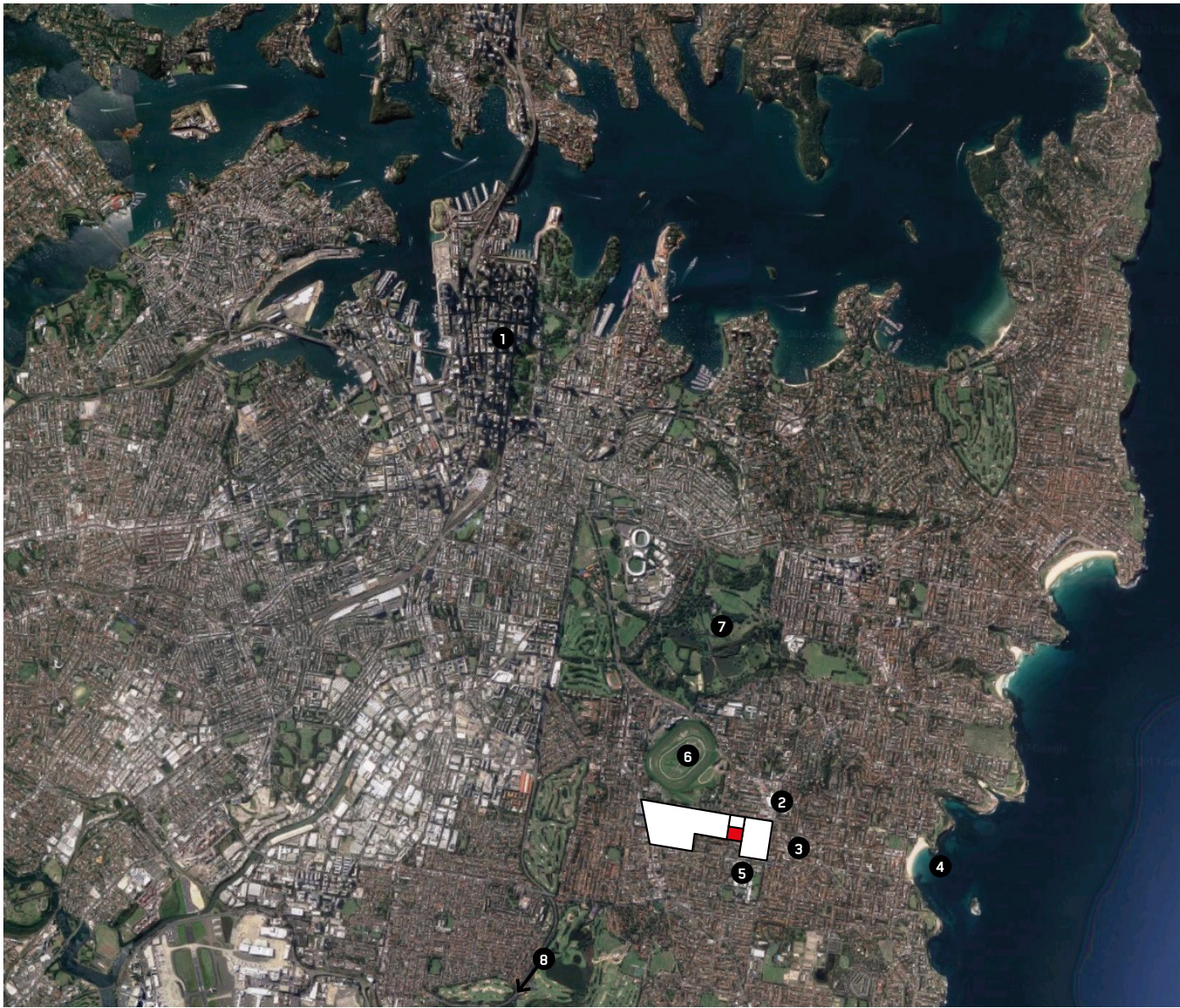
The Randwick Hospitals Campus (the Campus) is located immediately south-west of Randwick Town Centre.

The Campus is bounded by High Street to the north, which intersects with the Town Centre’s main street of Belmore Road; Avoca Street to the east; Barker Street to the south; and Hospital Road to the west, which forms the Campus’ interface with the University of New South Wales (UNSW).

Four hospitals currently share the Campus: Sydney Children’s Hospitals Network (SCHN), the Royal Hospital for Women (RHW), Prince of Wales Public Hospital (POW), and the Prince of Wales Private Hospital (POWP).

The approved Acute Services Building (ASB) is located residential land immediately west of the existing Campus, adjoining Botany Street and Magill Street, and will occupy a key position between the Campus and UNSW. As a result, Stage 1 of the ASB will provide a significant opportunity for physical connectivity between the Campus and UNSW.

The public domain and landscape design for Stage 1 of the Randwick Campus Redevelopment builds upon the significant body of work delivered as part of the precinct master plan. The urban design principles and aspirations of the master plan and their impact on this project are discussed in later sections of this report.



AERIAL VIEW

source: BVN, 2018

HOSPITALS CAMPUS

UNSW KENSINGTON CAMPUS

ASB SITE

1. SYDNEY CBD
2. RANDWICK TOWN CENTRE
3. THE SPOT
4. COOGEE BEACH
5. NEWMARKET GREEN RESIDENTIAL DEVELOPMENT
6. ROYAL RANDWICK RACECOURSE
7. CENTENNIAL PARK
8. TOWARD SYDNEY AIRPORT



## 2.0 Design Principles

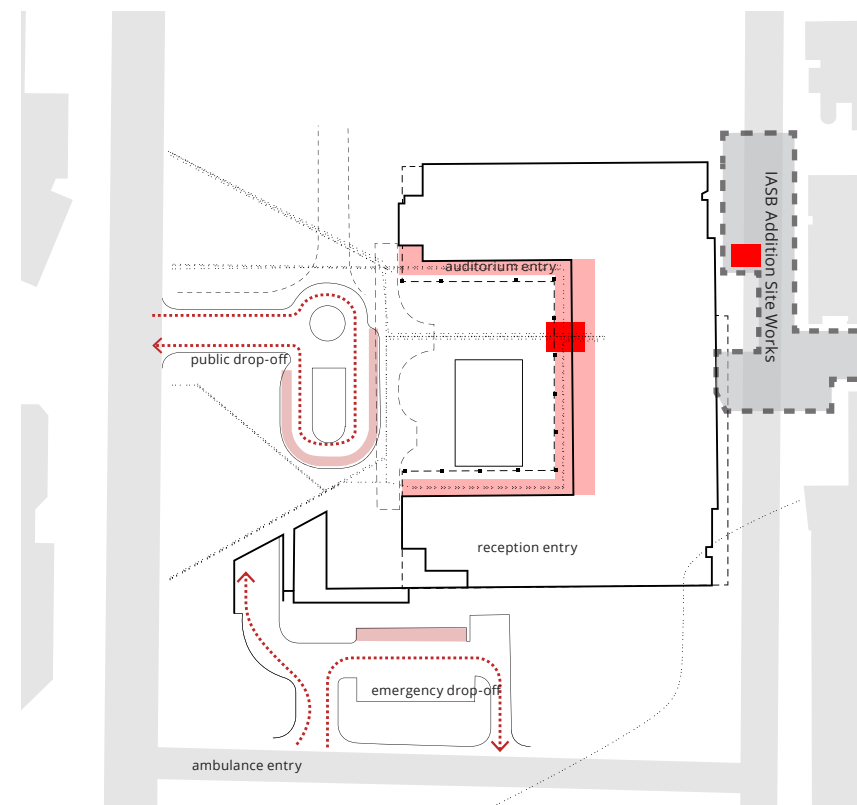
### Masterplan Design Principles

In line with the aspirations of the master planning, the IASB Addition must provide green and healthy, connected, integrated and responsive public domain and landscape spaces.

The design principles discussed herein describe and illustrate how this will be achieved and how it will integrate with the principles adopted for the approved ASB (SSD 9113)

### CREATE LEGIBLE AND WELCOMING ENTRANCES

- Public spaces at building entrances will enable the entrances to be readily found by visitors, providing distinctive design gestures integrated with building architecture and recognising their role as meeting places for staff and visitors.
- Vehicular entries will prioritise ease of access for medical priorities while remaining mindful of their location within public streets that must also prioritise pedestrian safety and amenity. Vehicular and pedestrian entrances will be distinct.

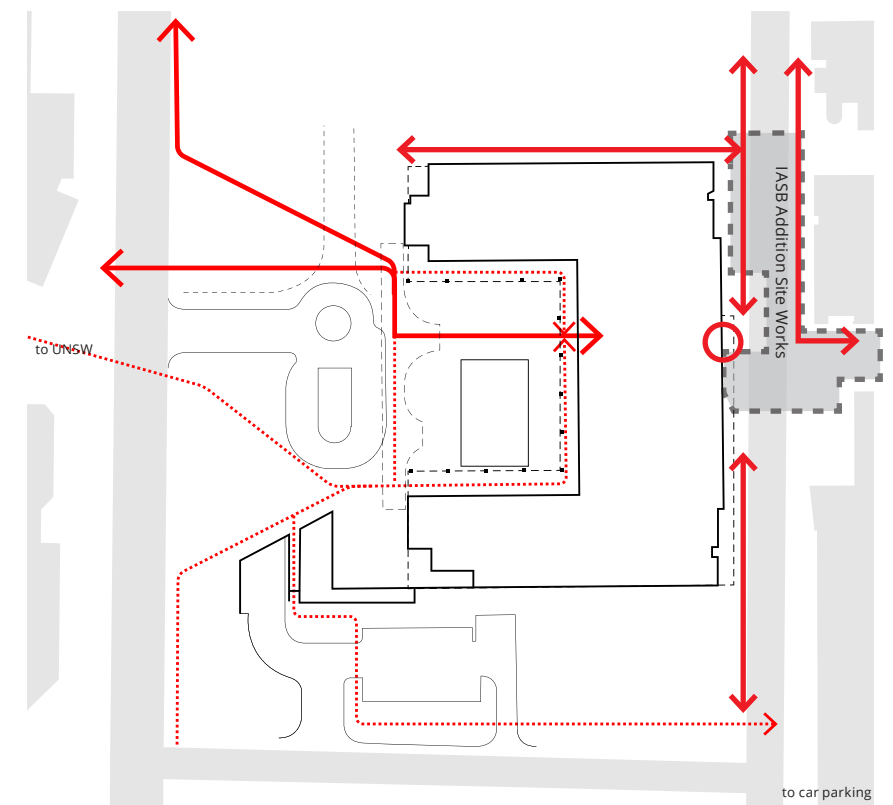


Create legible and welcoming entrances



### PROVIDE INTUITIVE WAYFINDING

- The public domain design will promote visual and physical connections between building entries and Campus amenities, and with the broader Precinct including public transport facilities and Randwick Town Centre.
- Street interfaces will provide recognisable wayfinding cues to orient users and promote legibility between streets and site entry points.



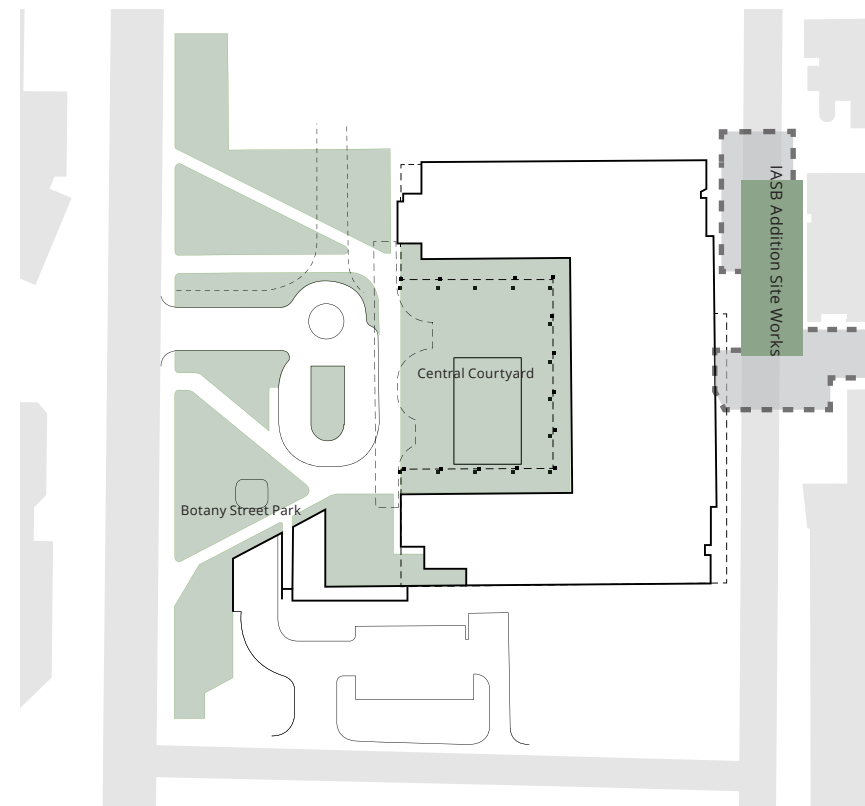
Provide intuitive wayfinding





### DELIVER ENGAGING OPEN SPACES

- IASB Addition open spaces and public domain will promote the identity of the Campus while being cognisant of the broader precinct within which the site sits.
- These spaces must go beyond the provision of design elements to meet functional requirements, and will speak to the regenerative potential of landscape and the role that these spaces will play in the context of the Campus.

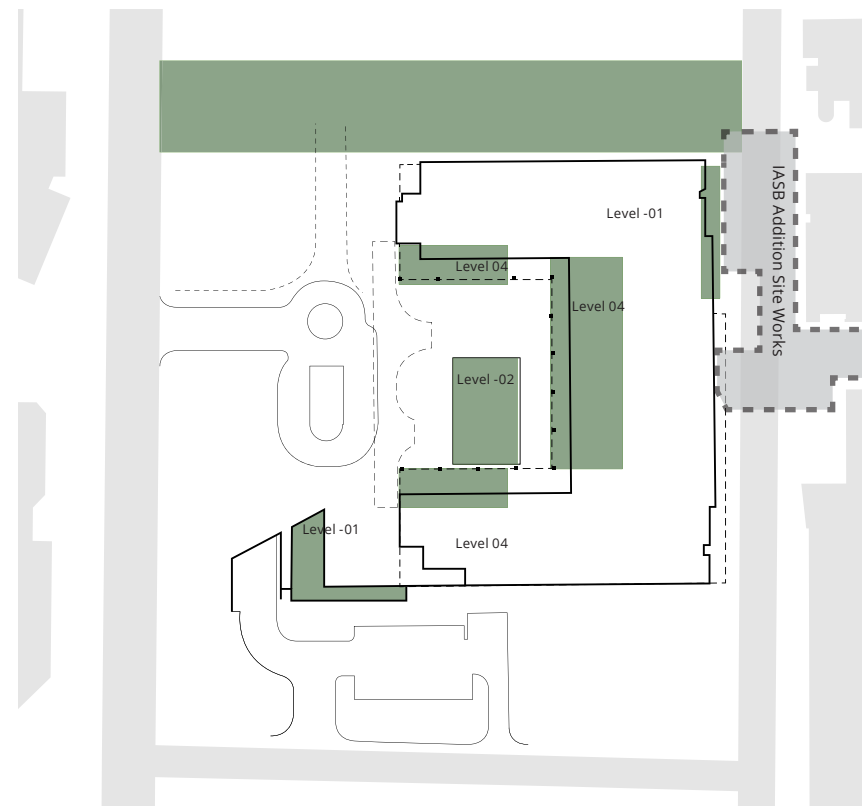


Deliver engaging open spaces



### PROVIDE PLANTED OUTLOOKS

- Design of spaces will be cognisant of the visual connections between internal building spaces, the public domain, and rooftop landscapes, and the regenerative role that these views play in patient recovery and staff well-being.
- External views to planted areas and open sky will be maximised to enable patient and staff access to views of nature from inside the ASB.
- The Level 04 trafficable rooftop will provide opportunities for breakout spaces for staff as well as serving the rehabilitation needs of patients.

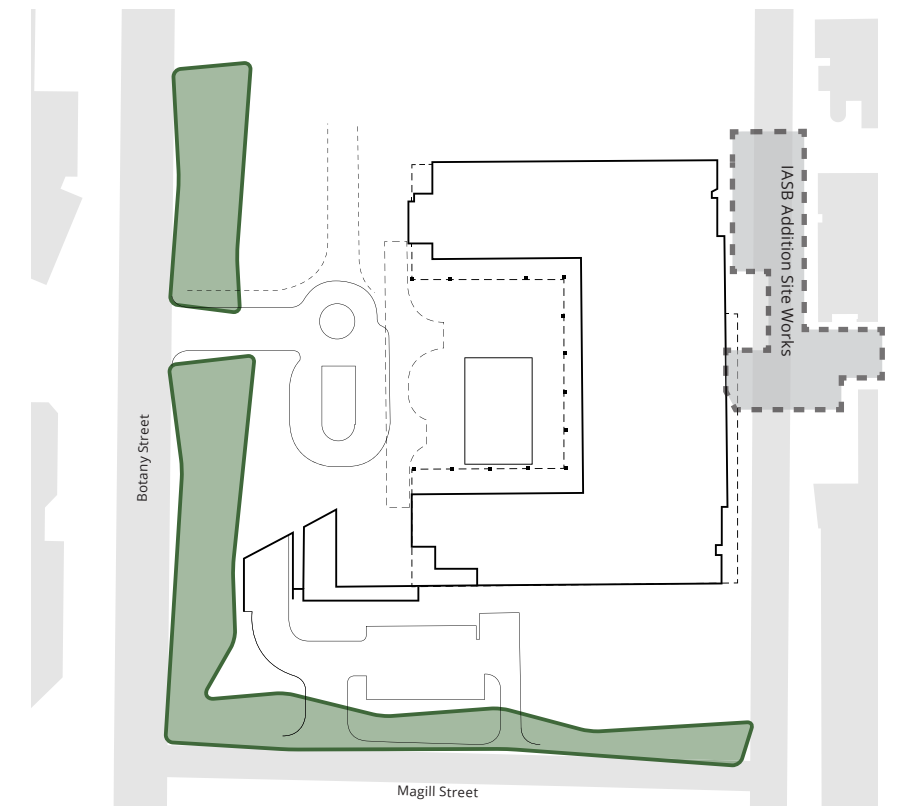


Provide planted outlooks



### INTEGRATE WITH SURROUNDING CONTEXT

- Public domain and streetscape interfaces will provide distinctive and legible entries to the site, while integrating with the broader Precinct, to create an inviting, safe, and permeable environment that improves local pedestrian and ecological connectivity.
- Landscape spaces within the site will be designed with regard to the broader landscape context within which the site is located (the ESBS ecology).
- Technical constraints such as level changes and vehicular access are resolved in a way that prioritises pedestrian and streetscape amenity, balancing access requirements into the site with safe and legible access along adjoining streets.



Integrate with surrounding context

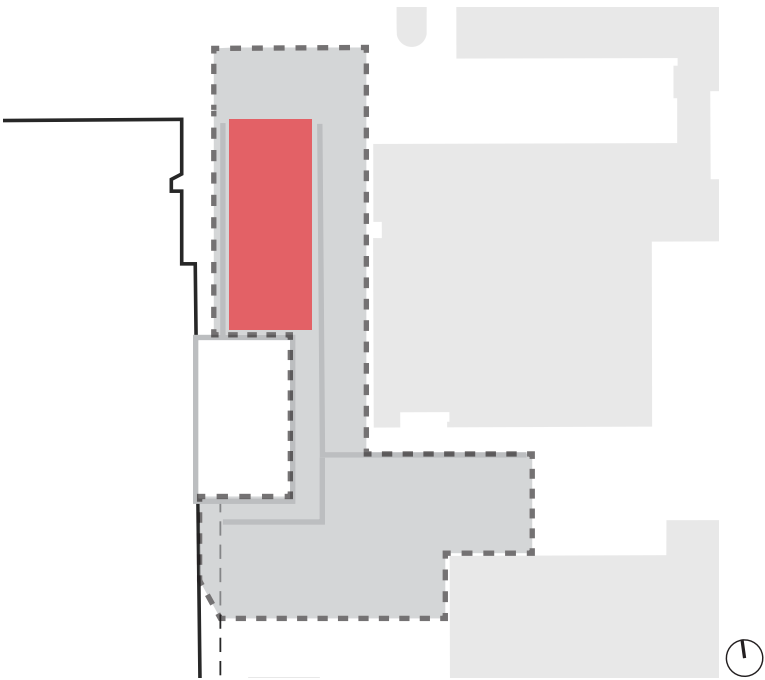


**Hospital Road Design Moves**

The design moves discussed in this section illustrate the priority design intent incorporated within the public domain design in achieving the design principles.

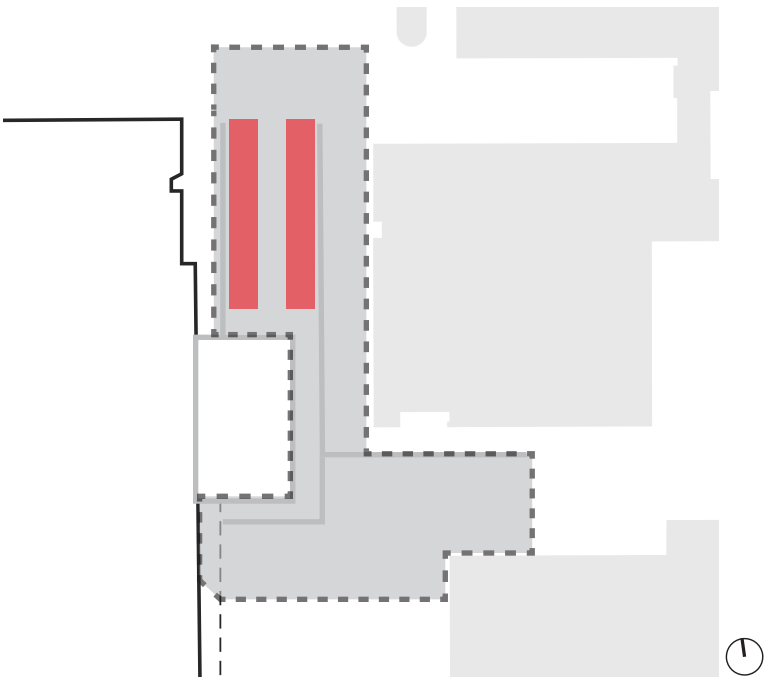
**CREATE A WELCOMING ARRIVAL SPACE**

As pedestrians move south from High Street approaching the IASB Addition, the experience should create a welcoming entrance to the building with planting and seating opportunities.



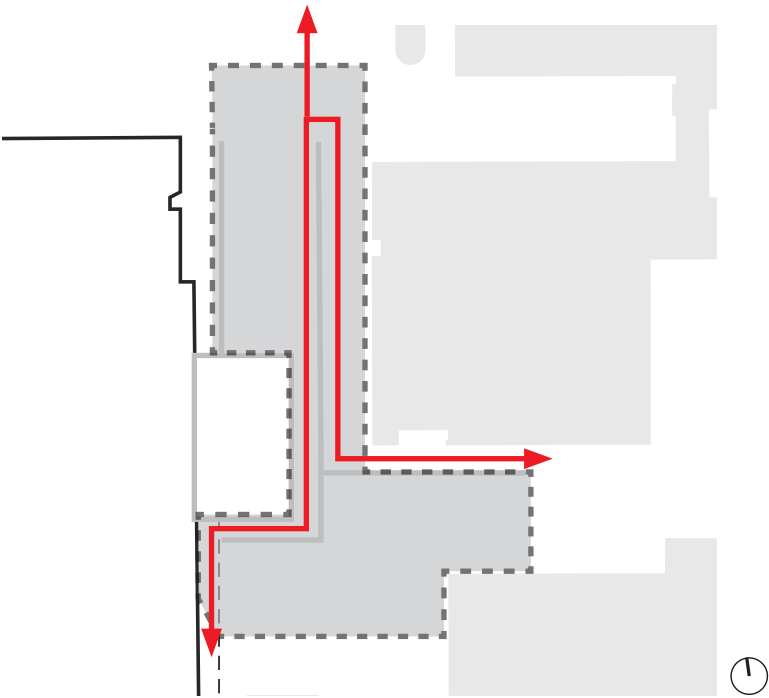
**GREEN PODIUM EDGES**

Planting should be used to create a verdant and lush edge to the podium edge. Planting will provide a protective barrier to significant level changes and discourage pedestrians climbing over walls.



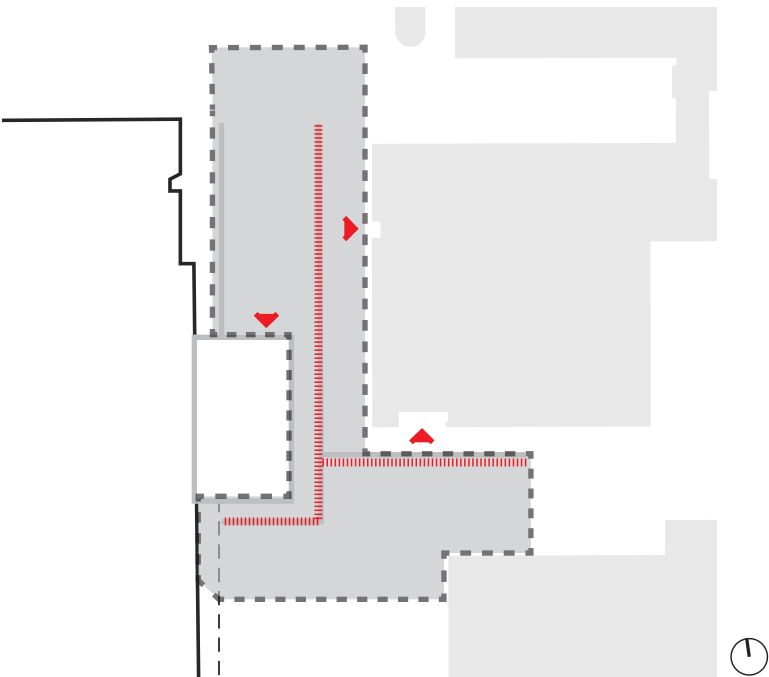
**NORTH - SOUTH PEDESTRIAN LINKS**

Create an accessible route between Magill Street, with a future connection north along Hospital Road to High Street.



**MANAGE LEVELS & EXISTING ACCESS POINTS**

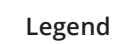
Maintain existing access to the Ainsworth Building and circulation around the southern corner to Delivery Drive.







### 3.0 Scope

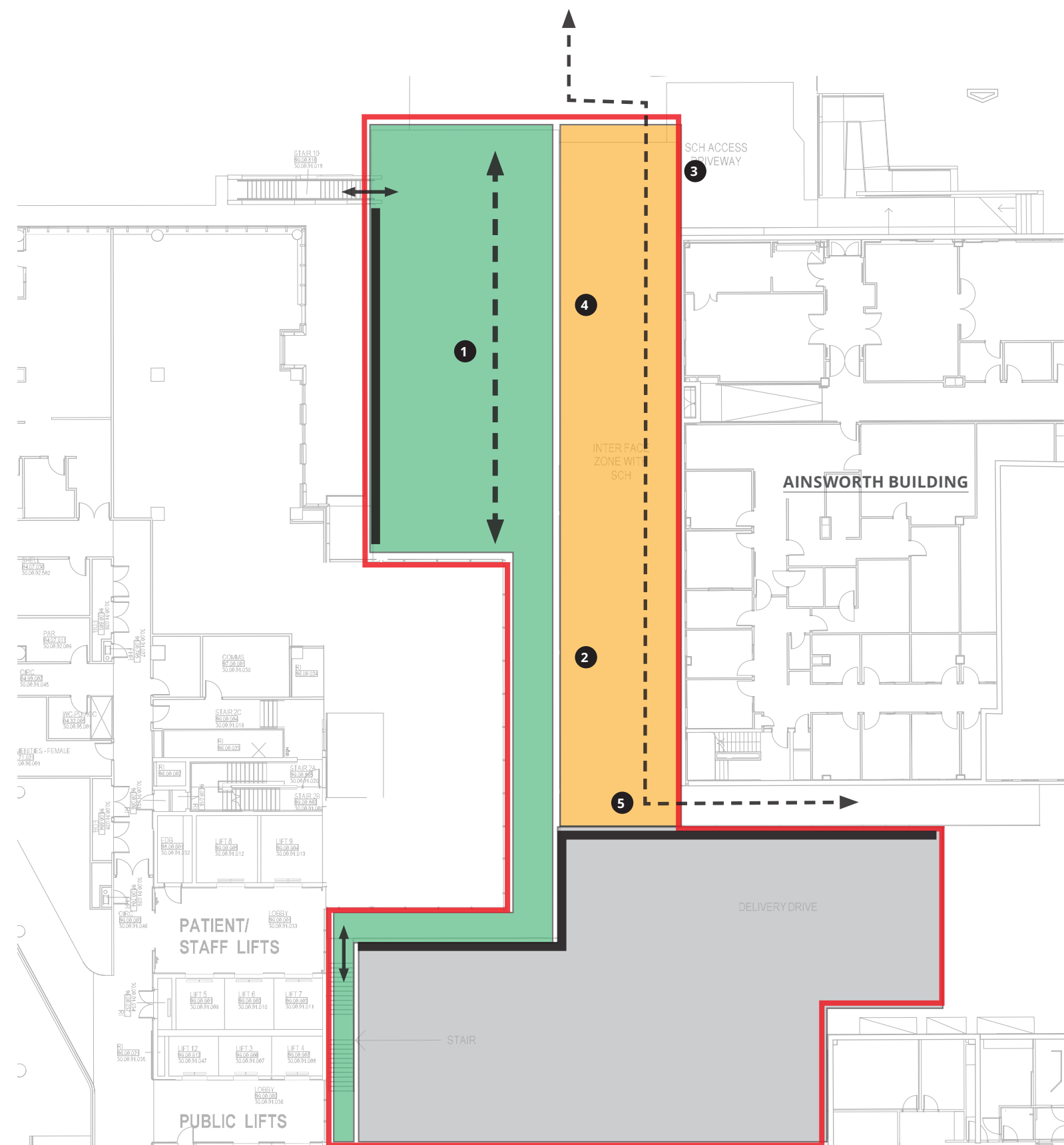
The landscape project scope will create a key amenity space to the entrance of the new IASB Addition and address key interfaces with the existing Ainsworth Building.

An important consideration is the continued access requirements to the Ainsworth. Delivery, drop off and pedestrian access must be retained while the construction of the IASB Addition is undertaken.



-  Phase 2 Works Boundary
-  Area to be made good.
-  Podium Landscape / Amenity Space
-  Ground Floor Vehicle Drop Off / Access To Car Park

- 1 Proposed landscape and amenity space to podium.
- 2 Removal of 6 car parking spaces.
- 3 Retention of existing loading and drop off zone to Ainsworth Building.
- 4 5 No. Disabled Car Parking spaces removed as part of public domain redesign.
- 5 Maintain existing access around Ainsworth Building.





## 4.0 Landscape Proposals



# LEVEL 00 General Arrangement

The landscape design responds to its context and creates a welcoming entrance to the IASB Addition featuring high quality planting, paving and street furniture.

The planted areas outside the IASB Addition entrance will feature raised steel planters with a palette of native shrubs, grasses and ground covers. Native feature trees will add structure and shade to the garden.

The western planter will feature species that will cascade over the edge and create a green ‘veil’ in front of the basement wall.

Seating areas create a space for staff to break away and take a moment, socialise or eat lunch.

A larger, social space and a series of small private seating areas are offered to accommodate a variety of use.

Existing access will be maintained to the Ainsworth Building and where significant level change occurs, a retaining wall and protective handrail will be used.

Existing delivery and drop off access is also maintained to the Ainsworth, which will be made good post construction.



CHARACTER IMAGES

- Legend

1

Primary pedestrian connection from Hospital Road to building entry

2

Secondary pedestrian connection

3

Public drop-off

4

Area to be made good and access maintained to Ainsworth Building.

5

Raised planters on podium

6

Social seating / break out spaces

7

Handrail to edge of retaining wall

8

Main building entry

9

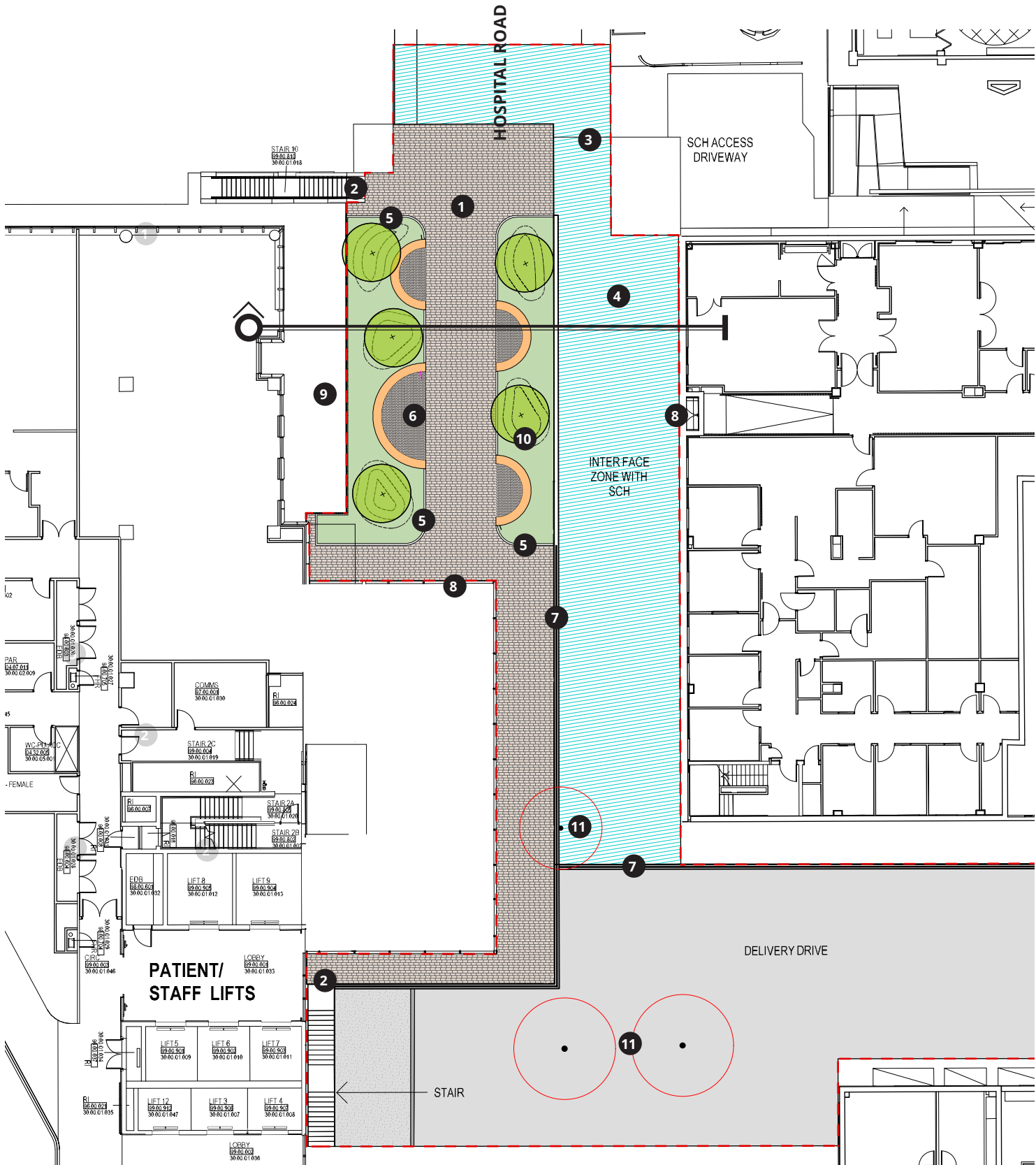
Internal lower level courtyard & hanging garden

10

Native ornamental tree and understorey planting

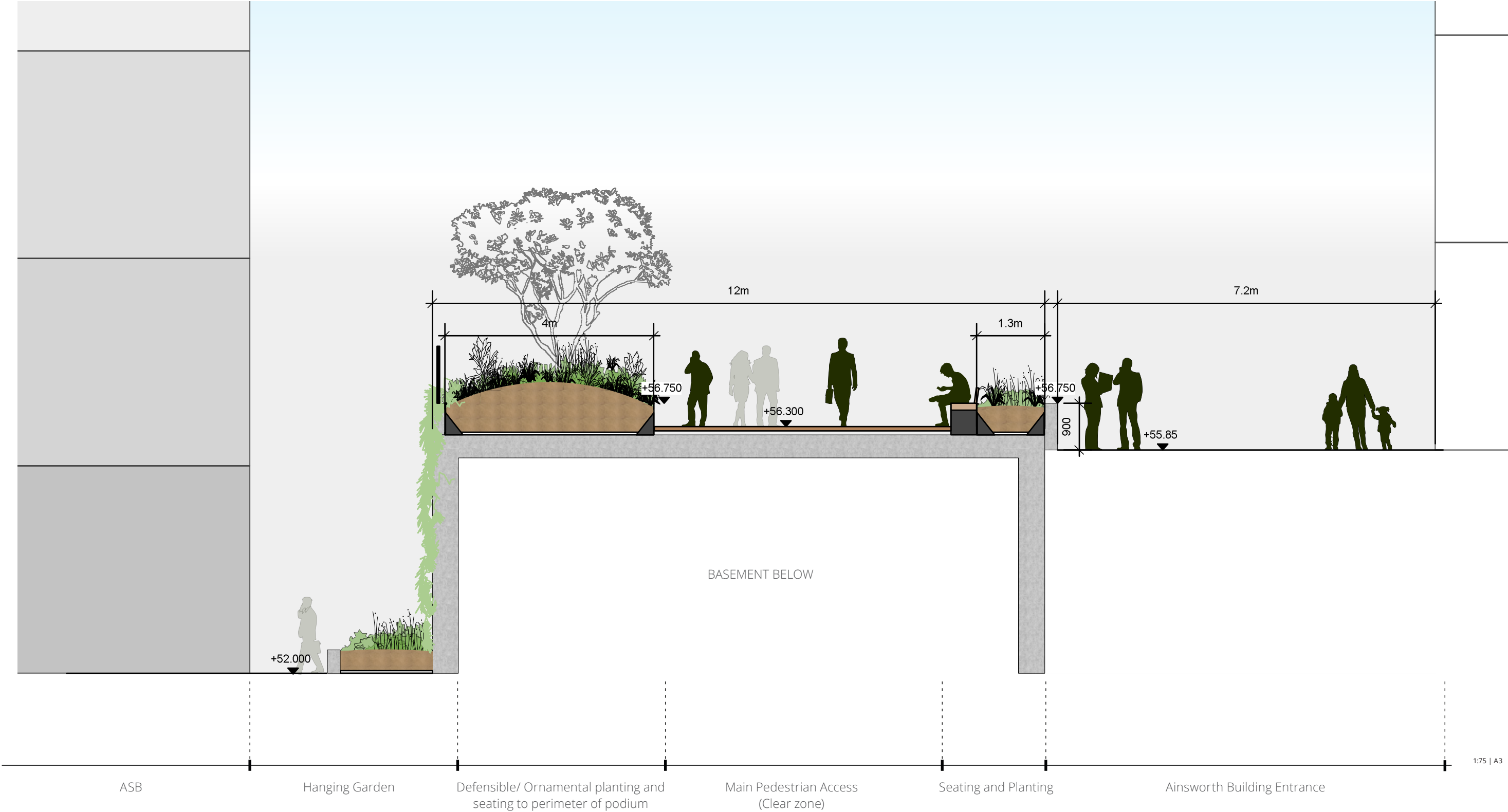
11

Existing tree removed



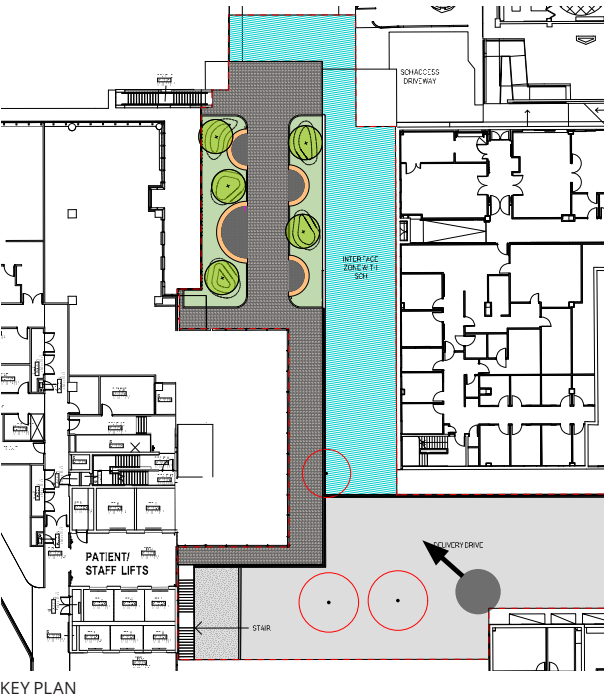
1:200 | A3

LEVEL 00 Section

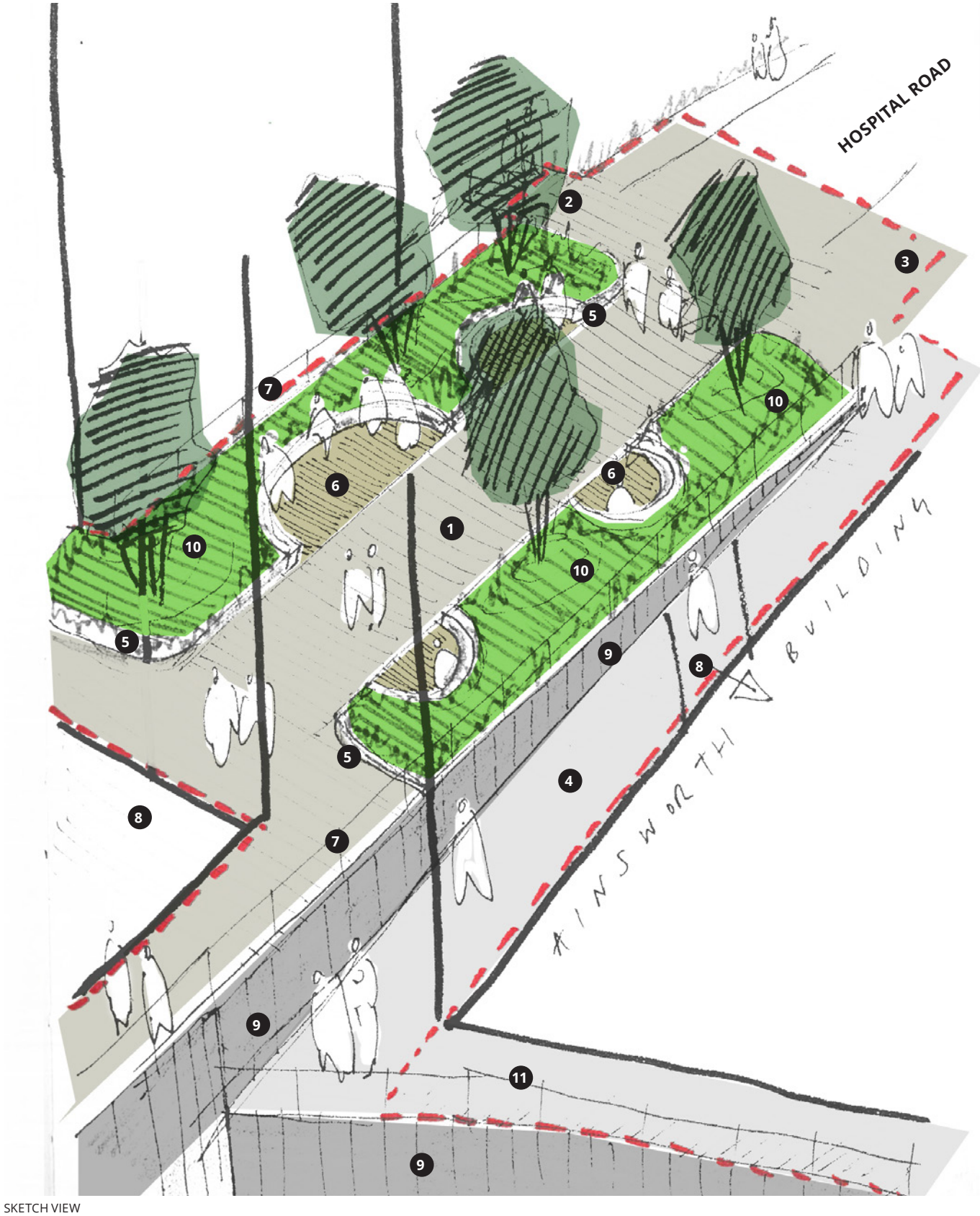




# LEVEL 00 Landscape Design



- Legend
  - 1 Primary pedestrian connection from Hospital Road to building entry
  - 2 Secondary pedestrian connection
  - 3 Public drop-off
  - 4 Area to be made good and access maintained to Ainsworth Building.
  - 5 Raised planters on podium
  - 6 Social seating / break out spaces
  - 7 Handrail
  - 8 Main building entry
  - 9 Retaining wall
  - 10 Native ornamental tree and understorey planting
  - 11 Access to delivery drive maintained





LEVEL 00 Material Palette

Hardworks

The public domain will feature concrete pavers, raised steel planters and curved bench seats with back rests. Materials and finishes are consistent with the wider masterplan landscape design.



Timber seating with backrests



Concrete pavers or insitu concrete



Raised steel planters



Decorative gravel mulch

Softworks

Planting within the amenity space includes a range of native species with a focus on bright flowered and bird attracting shrubs and small trees and shade tolerant species.

SMALL TREES



Grevillea baileyana

SHRUBS



Actinotus helianthi

GRASSES AND GROUNDCOVERS



Hardenbergia violace.



Correa Dusky Bells

CASCADING PLANTS



Trachelospermum jasminoides



Acacia terminalis



Dichondra repens



Dianella revoluta





---

# RESPONSE TO SUBMISSIONS

---

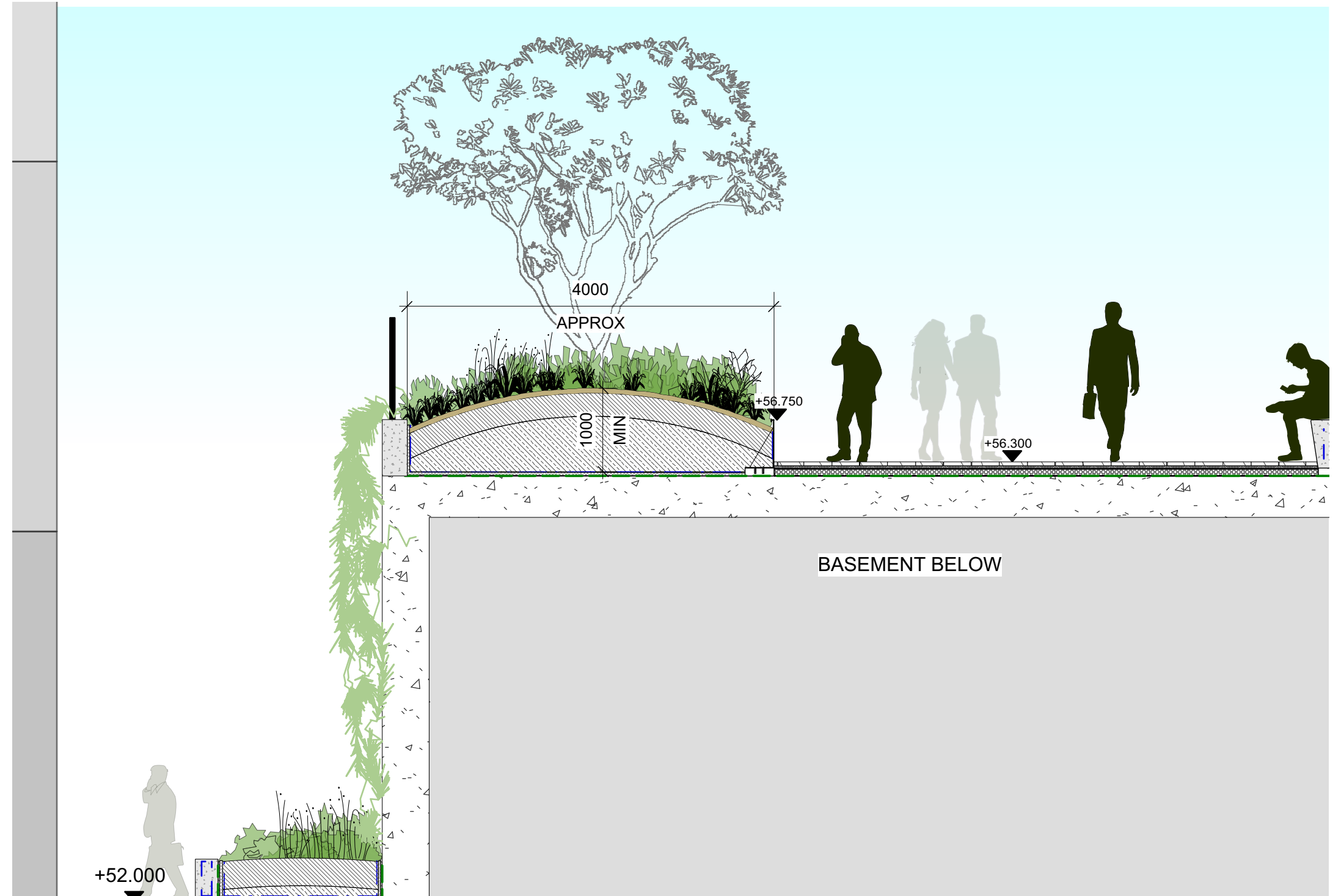


## 5.0 Response to Submission

### Soil Depths and Volumes

The trees proposed on the Hospital Road podium are small feature native trees. Small sized tree species are the most appropriate tree type for podium landscapes, as they can accommodate the structural and weight limitations. The design provides sufficient soil volume to all trees on the podium, to ensure they are able to grow at an adequate rate and will be healthy specimens. The root zone areas for the trees on podium slab are typically a continuous root zone, as opposed to small separated planter boxes or tree pits. The soil is to be mounded at tree root-balls to achieve a minimum 1 meter depth. All trees on podium slab have achieved minimum soil volumes per tree and have approximate soil volumes of 9.3m<sup>3</sup>.

Typical Section on Podium Slab 1:50 @A3

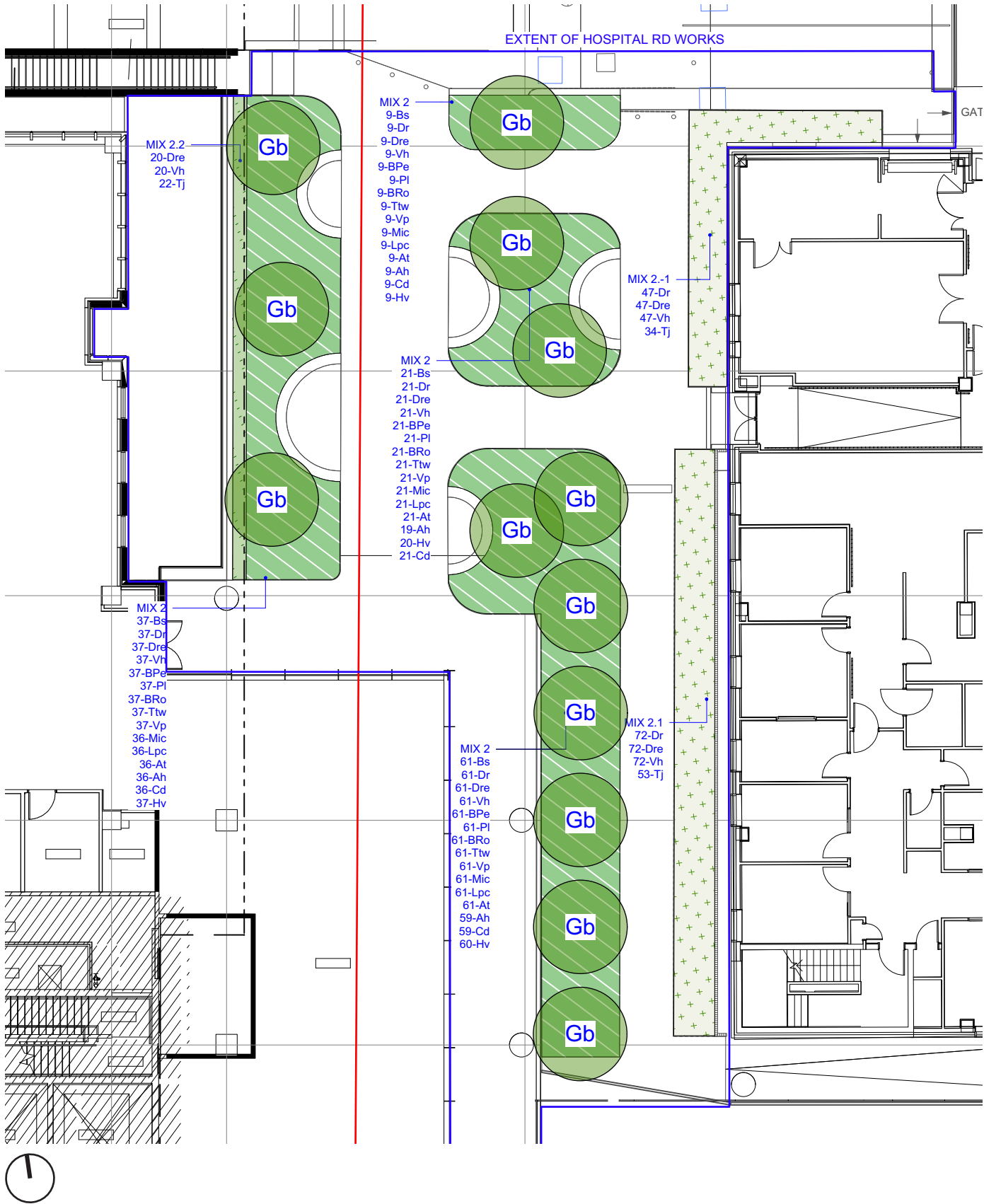


Planting Plan

The planting selection for the Hospital Road works is 95.5% native species. The planting mixes include shade tolerant species as well as sun/ part shade species. The feature shade canopy trees is *Grevillea baileyana*. The mix include a number of large to medium sized shrubs , as well as ground covers and grasses. There is a diverse mix of local flora for biodiversity and visual interest.

PLANT SCHEDULE: Hospital Road - 244m2							
Category / ID	Botanical Name	Common Name	Pot Size	Qty	Mature Height	Mature Spread	Rate / m
Trees							
Gb	Grevillea baileyana	Brown Silky Oak/ White Oak	100L	13	6 - 8m	2 - 4m	AS SHOWN
Shrubs							
At	Acacia terminalis	Sunshine Wattle	200mm	127	0.9 - 1.5m	1.2 - 2.0m	11/m2
Ah	Adiantum helianthi	Flannel Flower	200mm	123	1.5 - 3m	1.2 - 2.0m	11/m2
BRo	Banksia robur	Swamp Banksia, Large-leaf Banksia	200mm	128	0.9 - 1.5m	1.2 - 2.0m	11/m2
Bs	Banksia spinulosa	Banksia ' Birthday Candles'	Tube	128	0.45 - 0.60m	1.2 - 2.0m	11/m2
Cd	Correa Dusky Bells	Correa	200mm	125	1m	1m	11/m2
Lpc	Leptospermum hybrid	Pink Cascade	200mm	127	8m	1.2 - 1.5m	11/m2
Mic	Micromyrtus ciliata	Fringed heath myrtle	200mm	127	0.6 - 0.75m	0.6 - 0.9m	11/m2
Pl	Pimelea linifolia	Slender Rice-flower	200mm	128	0.45 - 0.6m	0.0 - 0.3m	11/m2
Vp	Verticordia plumosa	Plumed Feather Flower	200mm	128	0.90 - 1.50m	0.6 - 0.9m	11/m2
Total:				1154			
Grasses / Groundcovers							
BPe	Banksia petiolaris	Prostrate Banksia	Tube	128	0.3 - 0.45m	0.9 - 1.2m	11/m2
Dr	Dianella revoluta	Spreading Flax Lily/Blue Flax Lily	Tube	247	0.75 - 0.9m	0.3 - 0.6m	11/m2
Dre	Dichondra repens	Kidney Weed	Tube	267	0.0 - 0.3m	0.9 - 1.2m	11/m2
Hv	Hardenbergia violacea	Purple Coral Pea	200mm	126	0.3 - 0.45m	0.3 - 0.6m	11/m2
Ttw	Tetraloeca thymifolia white	Black eyed Susan	200mm	128	0.45 - 0.60m	0.3 - 0.6m	11/m2
Tj	Trachelospermum jasminoides	Star Jasmine	200mm	109	0.45 - 0.6m	0.3 - 0.6m	11/m2
Vh	Viola hederacea	Native Violet	Tube	267	0.45 - 0.6m	0.3 - 0.6m	11/m2
Total:				1272			

Hospital Road Planting Plan 1:200 @A3





## Planting Schedules

The two schedules included the following:

### Planting Origin Percentages

This schedule demonstrates the percentages of endemic, native and exotic origin of plants in the current planting schedule. Over 95.5% of the total planting quantities is native Australian flora. The design intention for species selection was to maximise local indigenous species.

## Quantity of Trees in Hospital Road Works

The total quantity of trees to be removed in the Hospital Road works area is thirteen, of which three have been approved for removal under the Stage 1 SSDA and ten require removal in Hospital Road landscape works. Thirteen new trees are proposed in the new space between ASB and the Ainsworth Building. The plan on the following page shows the trees to be removed and the proposed trees.

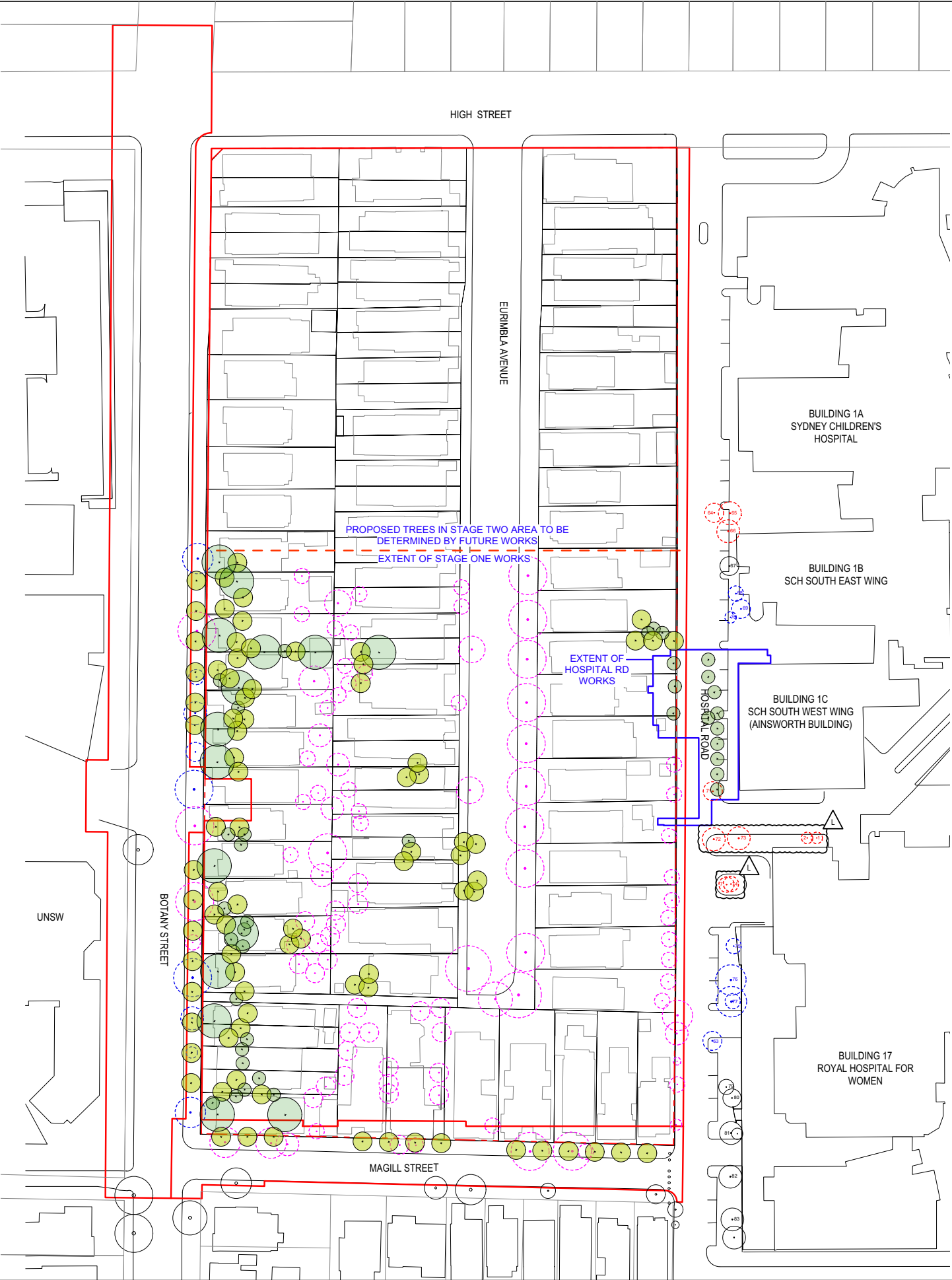
## Biodiversity

The project planting palette includes many species from the local the Eastern Suburbs Banksia Scrub [ESBS] plant community. This plant community has been declared an endangered ecological community and contains many critically endangered plants. Such [ESBS] plant species selected include; *Acacia terminalis*, *Dianella revoluta*, and *pimelea linifolia*, which we have included in our plant list.

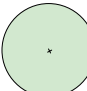








Due to the restricted size of the space, there is limited opportunity within the Hospital Road site area for habitat creation for the Grey-headed Flying Fox. However, the campus wide tree planting provides the opportunity for habitat compensation. The Grey-headed Flying Fox's primary food source is the blossoms from Eucalyptus trees, and utilises planting communities including Melaleuca Swamps and Banksia Woodlands. The Hospital site includes species from these two planting communities such as; *Eucalyptus robusta*, *Eucalyptus haemastoma*, *Melaleuca quinquenervia*, *Banksia robur*, *Banksia spinulosa*, *Banksia petiolaris*, *Banksia integrifolia*, and *Banksia serrata*.

Planting Origin Percentage Schedule								
Plant Code	Latin Name	Common Name	Pot Size	Quantity	Mature Height	Mature Spread	Origin	Percentage of Total Qty
At	Acacia terminalis	Sunshine Wattle	200mm	127	0.9 - 1.5m	1.2 - 2.0m	Endemic	5.23%
Ah	Actinotus helianthi	Flannel Flower	200mm	123	0.45 - 0.6m	0.0 - 0.3m	Endemic	5.07%
Pl	Pimelea linifolia	Slender Rice-flower	200mm	128	0.45 - 0.6m	0.0 - 0.3m	Endemic	5.28%
TOTAL								15.58%
BRo	Banksia robur	Swamp Banksia	200mm	128	0.9 - 1.5m	1.2 - 2.0m	Native	5.28%
Bs	Banksia spinulosa	Banksia 'Birthday Candles'	Tube	128	0.45 - 0.60m	1.2 - 2.0m	Native	5.28%
Bpe	Banksia petiolaris	Prostrate Banksia	Tube	128	0.45 - 0.60m	1.2 - 2.0m	Native	5.28%
Ca	Correa Dusky Bells	Correa	200mm	125	1m	1m	Native	5.15%
Dr	Dianella revoluta	Spreading Flax Lily	Tube	247	0.75 - 0.9m	0.3 - 0.6m	Native	10.18%
Dre	Dichondra repens	Kidney Weed	Tube	267	0.0 - 0.3m	0.9 - 1.2m	Native	11.01%
GB	Grevillea baileyana	Brown Silky Oak/White Oak	100L	13	6 - 8m	2 - 4m	Native	0.54%
Hv	Hardenbergia violace	Purple Coral Pea	200mm	126	0.45 - 0.60m	0.3 - 0.6m	Native	5.19%
Lpc	Leptospermum hybrid	Pink Cascade	200mm	127	.8m	1.2 - 1.5m	Native	5.23%
Mic	Micromyrtus ciliata	Fringed heath myrtle	200mm	127	0.6 - 0.75m	0.6 - 0.9m	Native	5.23%
Ttw	Tetratheca thymifolia white	Black eyed Susan	200mm	128	0.45 - 0.60m	0.3 - 0.6m	Native	5.28%
Vp	Verticordia plumosa	Plumed Feather Flower	200mm	128	0.90 - 1.50m	0.6 - 0.9m	Native	5.28%
Vh	Viola hederacea	Native Violet	Tube	267	0.45 - 0.6m	0.3 - 0.6m	Native	11.01%
TOTAL								79.93%
Tj	Trachelospermum jasminoides	Star Jasmine	200mm	109	0.45 - 0.6m	0.3 - 0.6m	Exotic	4.49%
TOTAL								4.49%
TOTAL				2426				
TOTAL SQUARE METRES OF PLANTING			TOTAL	244m2			Endemic	38.01m2

QUANTITY OF TREES IN HOSPITAL ROAD WORKS	
	QTY
Existing Trees Retained and Protected	0
Existing Trees Removed [Covered to be removed by original ASB]	3
Existing Trees Removed [Included in the IASB]	10
Proposed Trees [Hospital Road Works]	13



QUANTITY OF TREES IN STAGE ONE WORKS

	QTY
 PROPOSED TREE ASB STAGE 1 - CANOPY SIZE 9M	15
 PROPOSED TREE ASB STAGE 1 - CANOPY SIZE 5M	84
 PROPOSED TREE ASB STAGE 1 - CANOPY SIZE 3.5M	24
 PROPOSED TREE HOSPITAL ROAD WORKS - CANOPY SIZE 3.5M	13
 EXISTING TREE REATINED	8
<b>PROPOSED TREES TOTAL</b>	<b>144</b>
 EXISTING TREE OUT OF SCOPE	N/A
 EXISTING TREE REMOVED COVERED (TO BE REMOVED) BY THE ORIGINAL ASB	17
 EXISTING TREE REMOVED COVERED (TO BE REMOVED) BY THE ORIGINAL ASB SUBJECT TO SEPERATE APPROVAL	96
 EXISTING TREE REMOVED INCLUDED IN THE IASB	10
<b>EXISTING TREES REMOVED TOTAL</b>	<b>123</b>

STATUS

FOR INFORMATION


NOTES

Check all dimensions and site conditions prior to commencement of any work, the purchasing or ordering of any materials, fitting, plant services or equipment and the fabrication of any components.

Do not scale drawings - refer to figured dimensions only. Any discrepancies shall immediately be referred to the landscape architect for clarification.

All drawings may not be reproduced or distributed without prior permission from the landscape architect.

WARNING

 **DIAL BEFORE YOU DIG**  
www.1100.com.au

Services shown on this drawing are approximate only. The exact location is to be confirmed on site by contractor prior to commencement of work.

REV	DATE	AMENDMENTS
A	29/10/2019	FOR INFORMATION
B	31/10/18	FOR REVIEW
C	01/11/2018	FOR INFORMATION
D	08/11/18	FOR INFORMATION
E	13/11/18	FOR INFORMATION
F	15/11/18	FOR INFORMATION
G	21/11/18	FOR INFORMATION
H	13/12/18	FOR INFORMATION
I	20/12/18	FOR INFORMATION
J	14/8/19	FOR INFORMATION
K	17/10/19	FOR INFORMATION
L	17/10/19	FOR INFORMATION

**NOTE:**  
REFER TO TREE IQ REPORT FOR DETAILED ASSESSMENT OF SURVEYED TREES WITHIN THE STUDY AREA

REFER TO CIVIL ENGINEERS DRAWING FOR:  
- LEVELS AND GRADING INFORMATION  
- PIT AND PIPE LOCATIONS  
- DRAINAGE POINTS AND FALLS

**NOT FOR CONSTRUCTION**

**ASPECT Studios™**

ASPECT Studios Pty Ltd  
Level 1, 78-80 George Street  
Sydney NSW 2016 Australia  
+61 2 9550 7182  
www.aspect-studios.com  
sydney@aspect-studios.com

CLIENT  
**LENDELEASE**  
Level 14, Tower Three  
International Towers Sydney  
Barangaroo NSW 2000

PROJECT  
Randwick Hospital Campus

DRAWING  
Site Tree Retention and Removal

DRAWN	CHECKED	SCALE @ A1
TL   CK	JH   KL	1:600
DRAWING NO.		REVISION
S17032-LA-L-050		L

