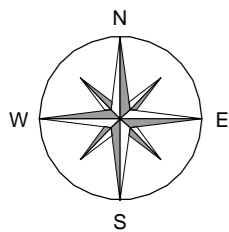
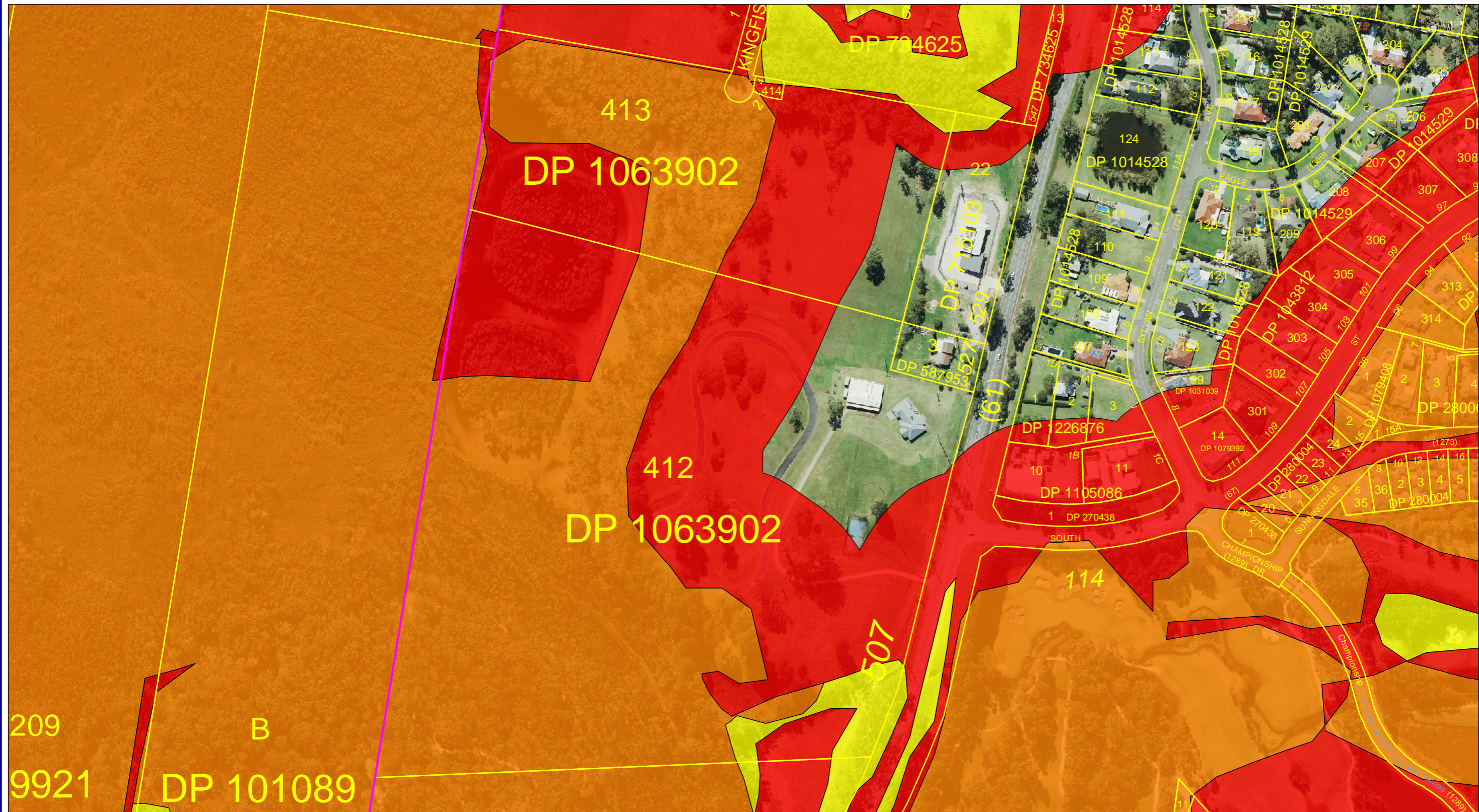


GIS Plot



MGA 56



116 Adelaide Street, Raymond Terrace NSW 2324. Phone: (02) 49800255 Fax: (02) 49873612 Email: council@portstephens.nsw.gov.au

DISCLAIMER

Port Stephens Council accepts no responsibility for any errors, omissions or inaccuracies whatsoever contained within or arising from this map. Verification of the information shown should be obtained from an appropriately qualified person(s).

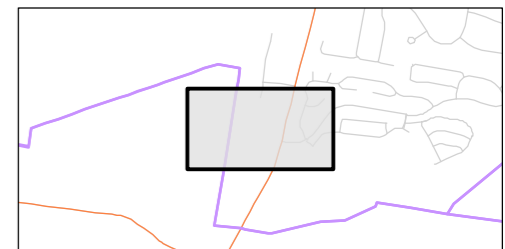
This map is not to be reproduced without prior consent.

© NSW Department of Finance, Services & Innovation 2018
© Port Stephens Council 2018

SCALE: 1:3100 @ A3

PRINTED ON: 02.08.18

SHEET LOCALITY

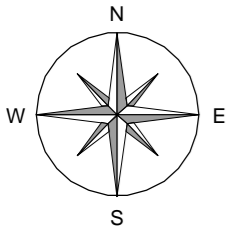
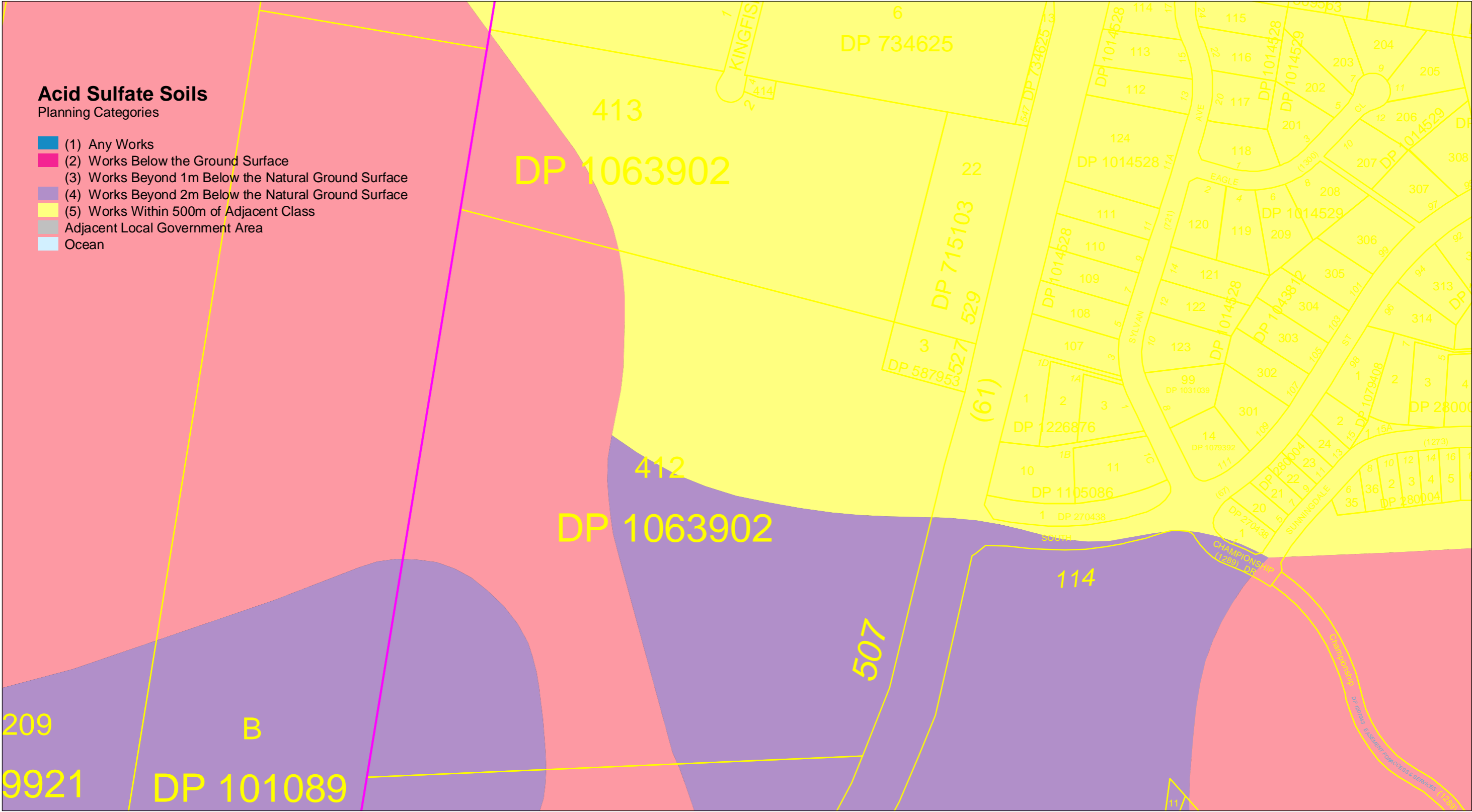


GIS Plot

Acid Sulfate Soils

Planning Categories

- (1) Any Works
- (2) Works Below the Ground Surface
- (3) Works Beyond 1m Below the Natural Ground Surface
- (4) Works Beyond 2m Below the Natural Ground Surface
- (5) Works Within 500m of Adjacent Class
- Adjacent Local Government Area
- Ocean



MGA 56



116 Adelaide Street, Raymond Terrace NSW 2324. Phone: (02) 49800255 Fax: (02) 49873612 Email: council@portstephens.nsw.gov.au

DISCLAIMER

Port Stephens Council accepts no responsibility for any errors, omissions or inaccuracies whatsoever contained within or arising from this map. Verification of the information shown should be obtained from an appropriately qualified person(s).

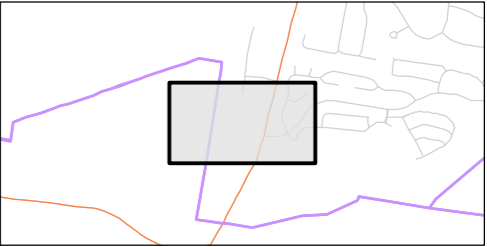
This map is not to be reproduced without prior consent.

© NSW Department of Finance, Services & Innovation 2018
© Port Stephens Council 2018

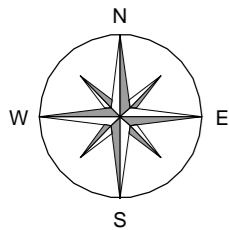
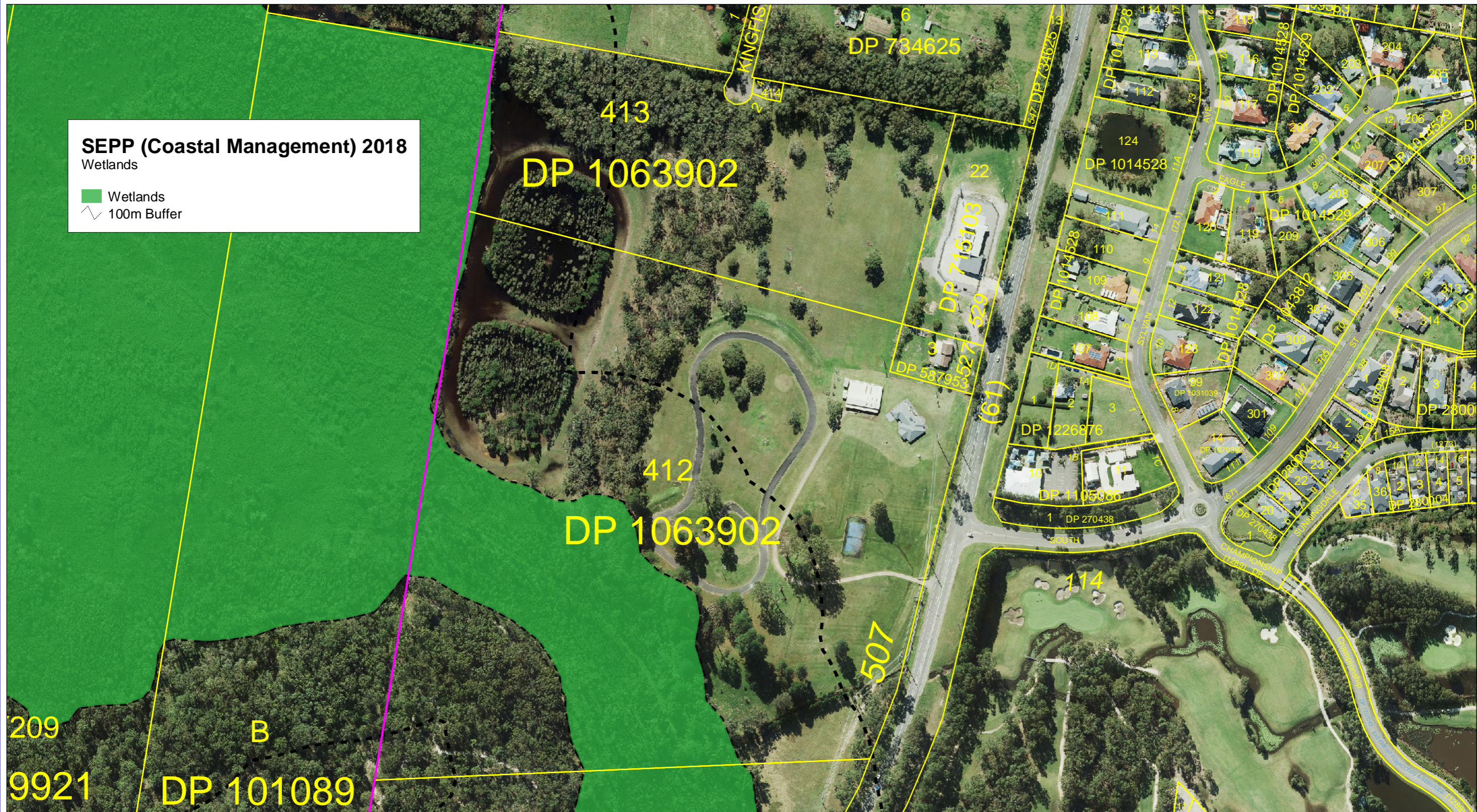
SCALE: 1:3100 @ A3

PRINTED ON: 02.08.18

SHEET LOCALITY



GIS Plot



MGA 56



116 Adelaide Street, Raymond Terrace NSW 2324. Phone: (02) 49800255 Fax: (02) 49873612 Email: council@portstephens.nsw.gov.au

DISCLAIMER

Port Stephens Council accepts no responsibility for any errors, omissions or inaccuracies whatsoever contained within or arising from this map. Verification of the information shown should be obtained from an appropriately qualified person(s).

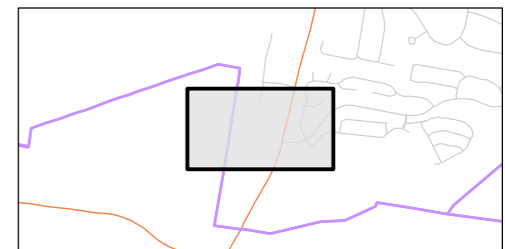
This map is not to be reproduced without prior consent.

© NSW Department of Finance, Services & Innovation 2018
© Port Stephens Council 2018

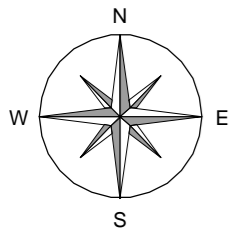
SCALE: 1:3100 @ A3

PRINTED ON: 02.08.18

SHEET LOCALITY



GIS Plot



MGA 56



116 Adelaide Street, Raymond Terrace NSW 2324. Phone: (02) 49800255 Fax: (02) 49873612 Email: council@portstephens.nsw.gov.au

DISCLAIMER

Port Stephens Council accepts no responsibility for any errors, omissions or inaccuracies whatsoever contained within or arising from this map. Verification of the information shown should be obtained from an appropriately qualified person(s).

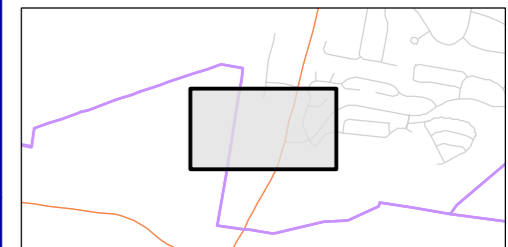
This map is not to be reproduced without prior consent.

© NSW Department of Finance, Services & Innovation 2018
© Port Stephens Council 2018

SCALE: 1:3100 @ A3







PRINTED ON: 02.08.18

SHEET LOCALITY



RAAF Base Williamtown & Salt Ash Air Weapons Range Height Trigger Map

LEGEND

-  Runway centre-line
-  Refer all structures
-  Refer structures higher than 7.5m
-  Refer structures higher than 15m
-  Refer structures higher than 45m
-  Defence boundaries

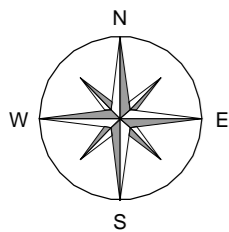
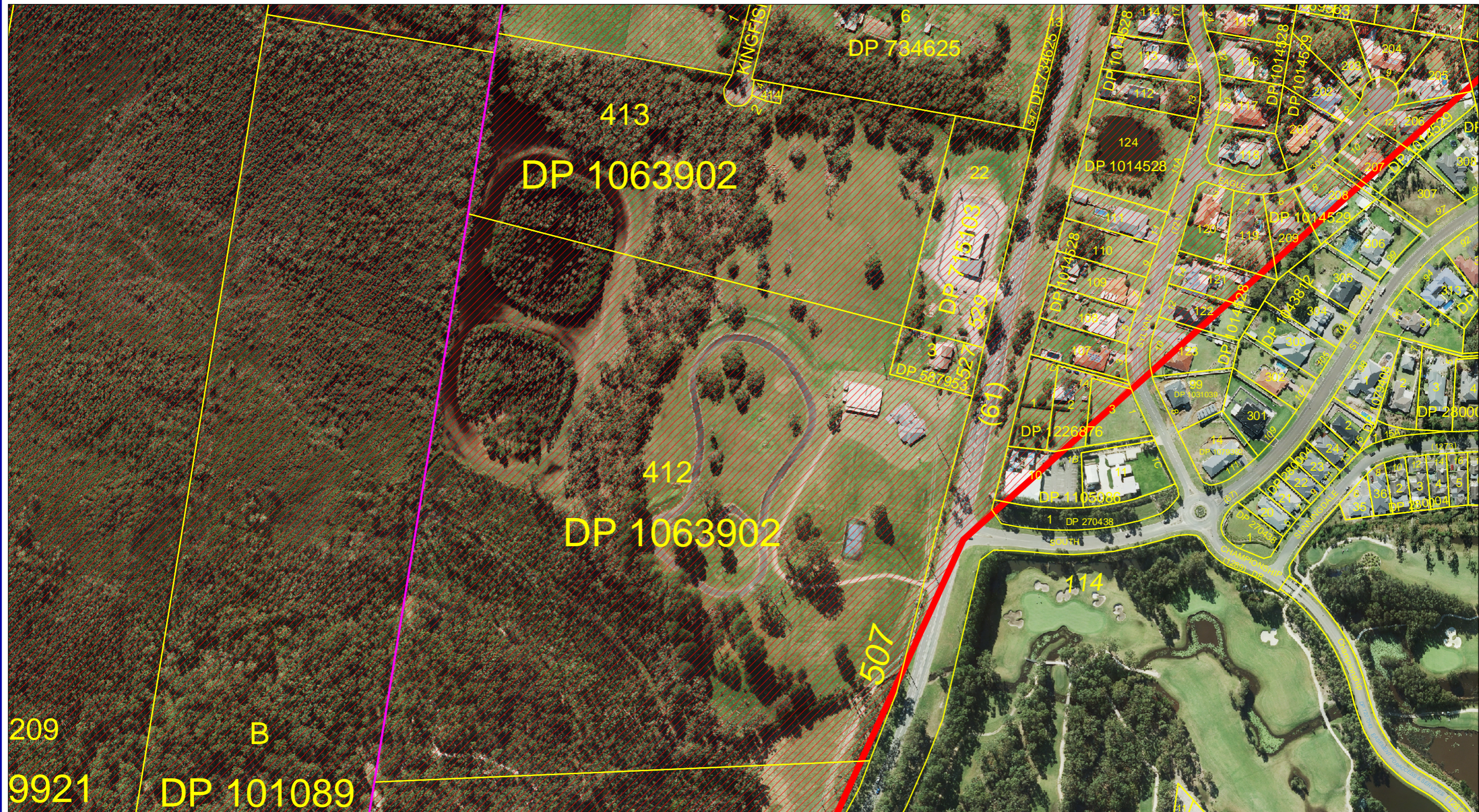
Safe aircraft operations require obstruction free takeoffs and landings at airfields.

The purpose of this map is to provide guidance to Councils when assessing Development Applications for land within the vicinity of RAAF Base Williamtown.

Any development which exceeds the heights shown on this map should be referred to the Department of Defence for consideration and advice.

February, 2014

GIS Plot



MGA 56



116 Adelaide Street, Raymond Terrace NSW 2324. Phone: (02) 49800255 Fax: (02) 49873612 Email: council@portstephens.nsw.gov.au

DISCLAIMER

Port Stephens Council accepts no responsibility for any errors, omissions or inaccuracies whatsoever contained within or arising from this map. Verification of the information shown should be obtained from an appropriately qualified person(s).

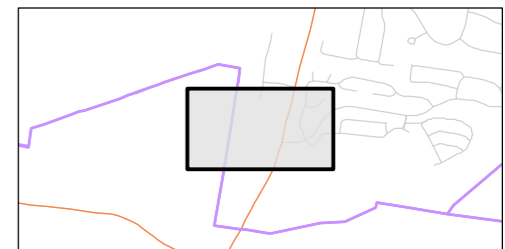
This map is not to be reproduced without prior consent.

© NSW Department of Finance, Services & Innovation 2018
© Port Stephens Council 2018

SCALE: 1:3100 @ A3

PRINTED ON: 02.08.18

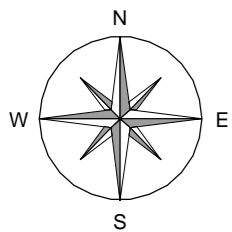
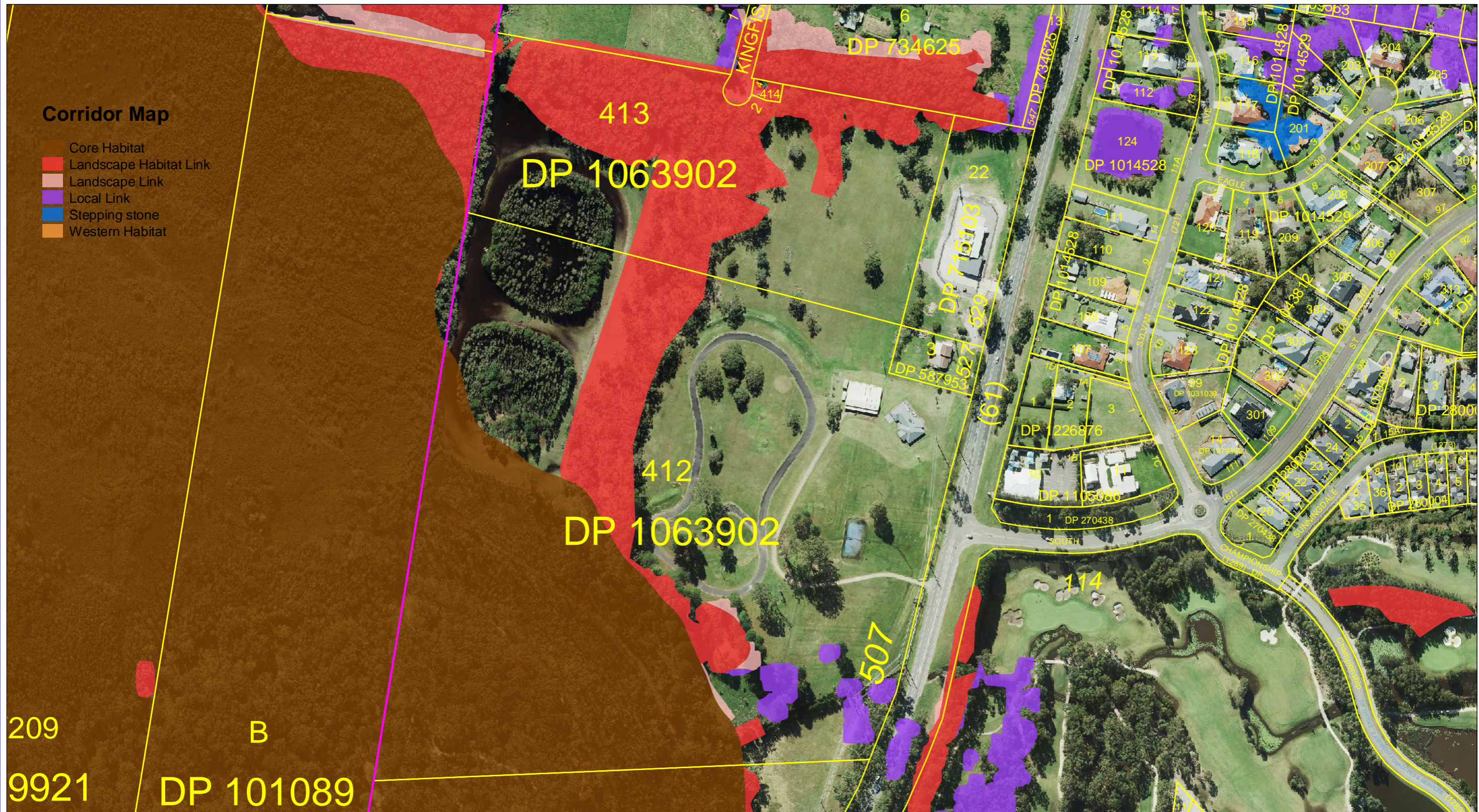
SHEET LOCALITY



GIS Plot



- Core Habitat
- Landscape Habitat Link
- Landscape Link
- Local Link
- Stepping stone
- Western Habitat



MGA 56



PORT STEPHENS
COUNCIL

116 Adelaide Street, Raymond Terrace NSW 2324. Phone: (02) 49800255 Fax: (02) 49873612 Email: council@portstephens.nsw.gov.au

DISCLAIMER

Port Stephens Council accepts no responsibility for any errors, omissions or inaccuracies whatsoever contained within or arising from this map. Verification of the information shown should be obtained from an appropriately qualified person(s).

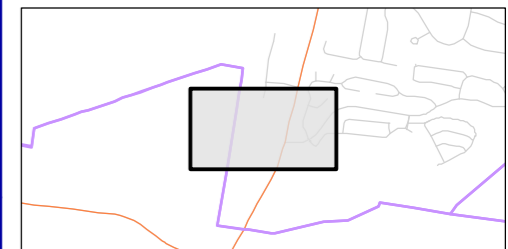
This map is not to be reproduced without prior consent.

© NSW Department of Finance, Services & Innovation 2018
© Port Stephens Council 2018

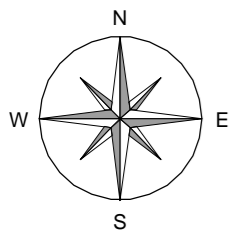
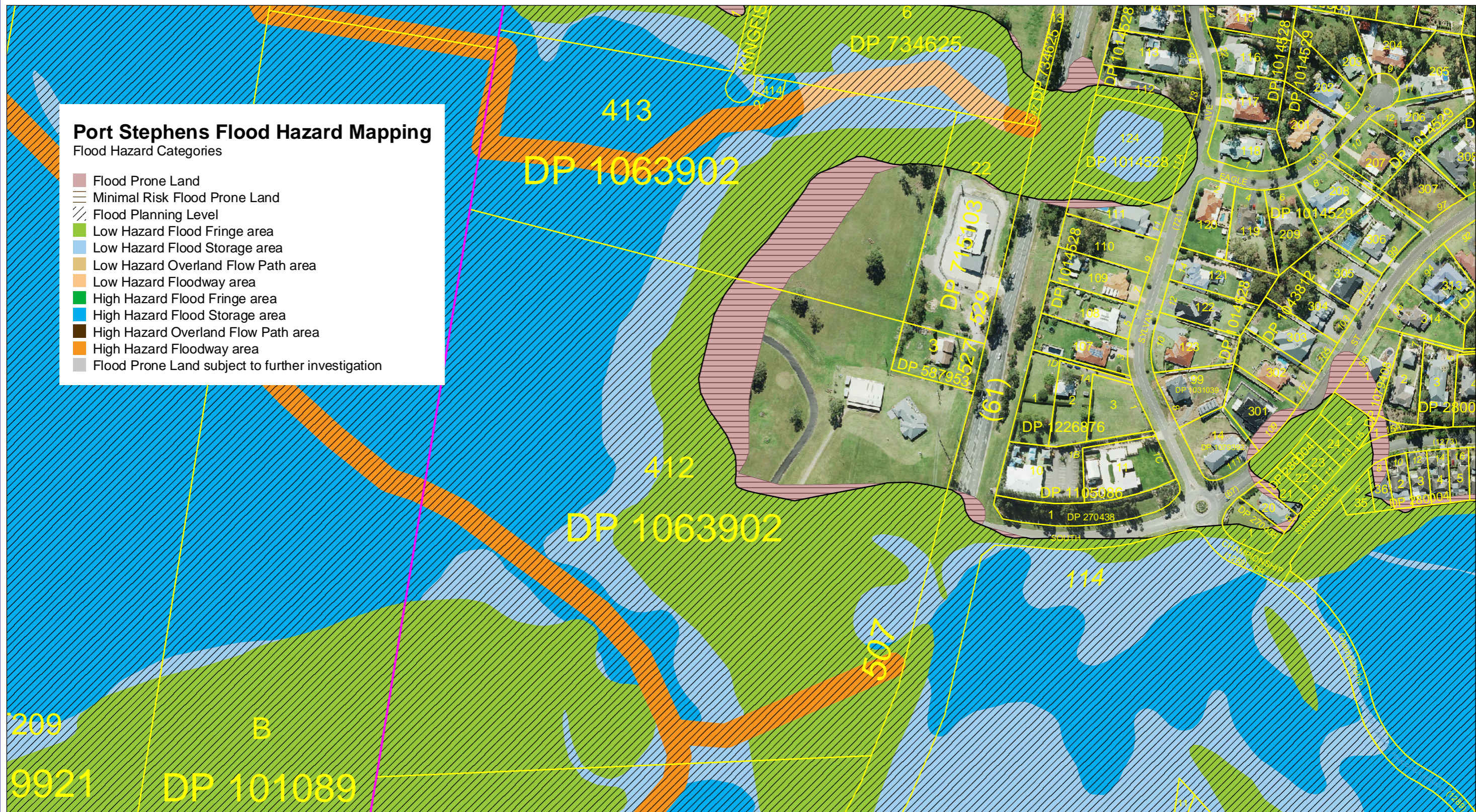
SCALE: 1:3100 @ A3

PRINTED ON: 02.08.18

SHEET LOCALITY



GIS Plot



MGA 56



116 Adelaide Street, Raymond Terrace NSW 2324. Phone: (02) 49800255 Fax: (02) 49873612 Email: council@portstephens.nsw.gov.au

DISCLAIMER

Port Stephens Council accepts no responsibility for any errors, omissions or inaccuracies whatsoever contained within or arising from this map. Verification of the information shown should be obtained from an appropriately qualified person(s).

This map is not to be reproduced without prior consent.

© NSW Department of Finance, Services & Innovation 2018
© Port Stephens Council 2018

SCALE: 1:3100 @ A3

PRINTED ON: 02.08.18

SHEET LOCALITY

