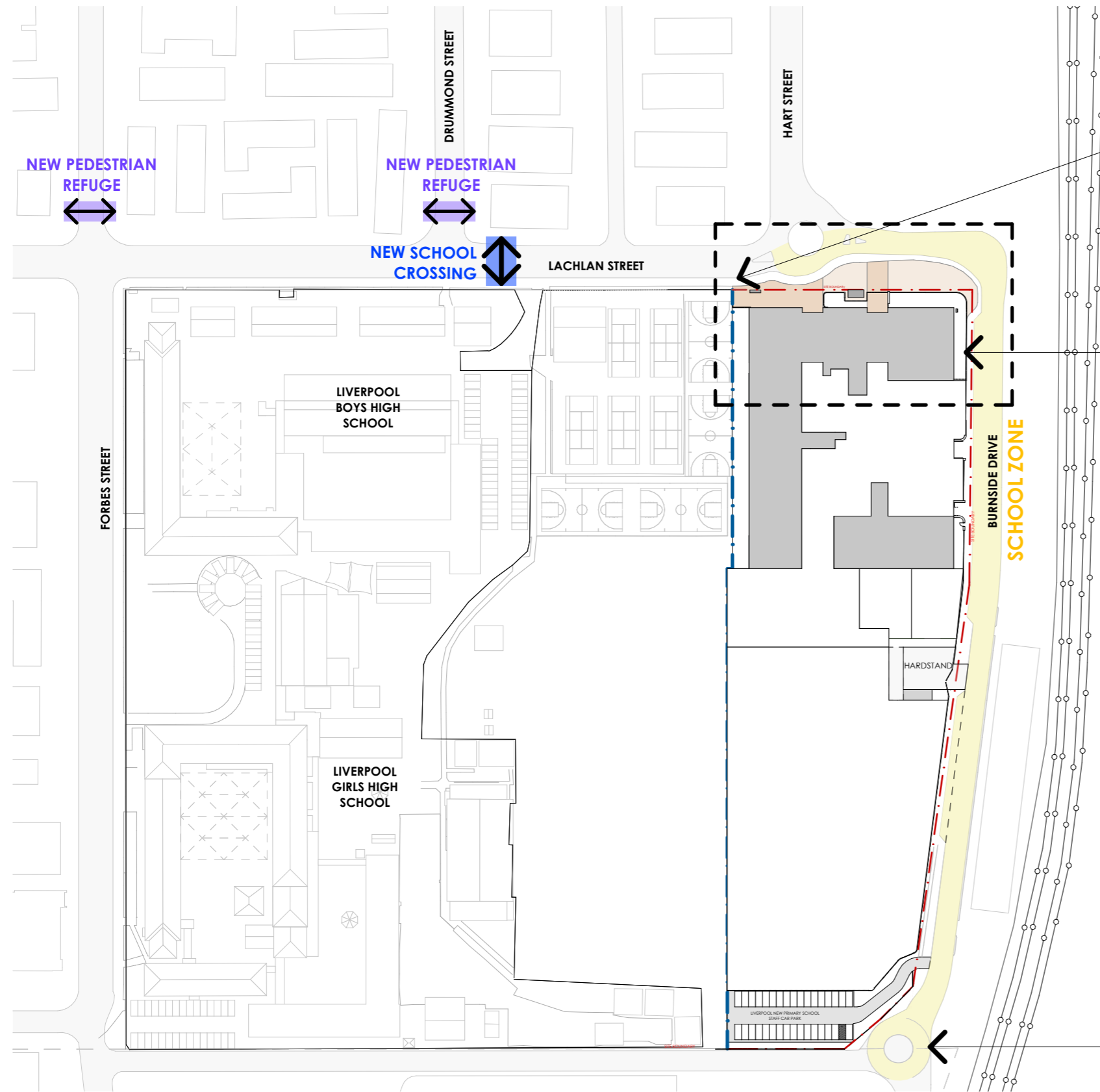


# NEW LIVERPOOL PRIMARY SCHOOL

SOUTHERN SUBURBS CLUSTER



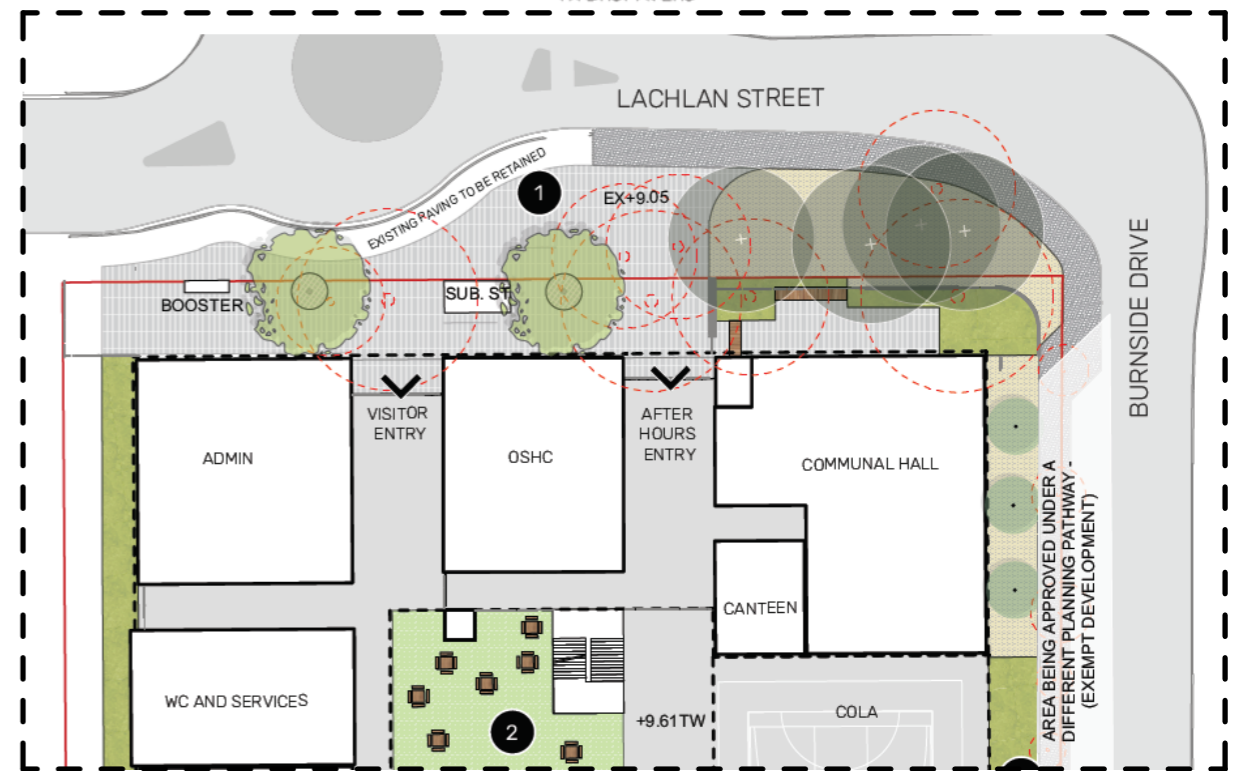
**LACHLAN STREET WIDENING**  
REFER TO TRAFFIC IMPACT ASSESSMENT REPORT SUBMITTED WITH SSDA

**BURNSIDE DRIVE FOOTPATH AND ROAD WIDENING**  
REFER TO TRAFFIC IMPACT ASSESSMENT REPORT SUBMITTED WITH SSDA

**NEW ROUNDABOUT**  
REFER TO TRAFFIC IMPACT ASSESSMENT REPORT SUBMITTED WITH SSDA

## KEY

- PROPOSED NATIVE TREE
- PROPOSED FEATURE TREE
- EXISTING TREE (MEDIUM SIGNIFICANCE/RETENTION VALUE)
- TREE TO BE REMOVED
- NATIVE SHRUBS
- SHRUB/ GROUND COVER/ GRASS PLANTING
- SYNTHETIC TURF (40MM NOMO COOL - SUPPLIER: GRASSMAN)
- CONCRETE (4% ONYX)
- PAVING TO MATCH EXISTING ALONG LACHLAN STREET
- PERMEABLE PAVING (CHARCOAL - SUPPLIER: HYDROPAVERS)
- ORGANIC MULCH (SOURCED ON SITE)
- MOVABLE/ FIXED METRO TABLE SETTING (TIMBER 'LOOK' COATED ALUMINIUM - GRILLEX.COM.AU)
- SITE BOUNDARY
- ROOF/ SHADE STRUCTURE (TO BE SPECIFIED)
- FENCE



**LACHLAN STREET PUBLIC DOMAIN**  
BY SPACKMAN MOSSOP MICHAELS  
REFER TO LANDSCAPE CONCEPT DESIGN REPORT SUBMITTED WITH SSDA

## PUBLIC DOMAIN

SK210823



@ A3

**LEGEND**



UNENCUMBERED PLAY = 12370M2



PRE SCHOOL = 285M2



SUPPORT UNIT = 410M2

PRIMARY SCHOOL UNENCUMBERED PLAY SPACE REQUIREMENT 10M2 / STUDENT

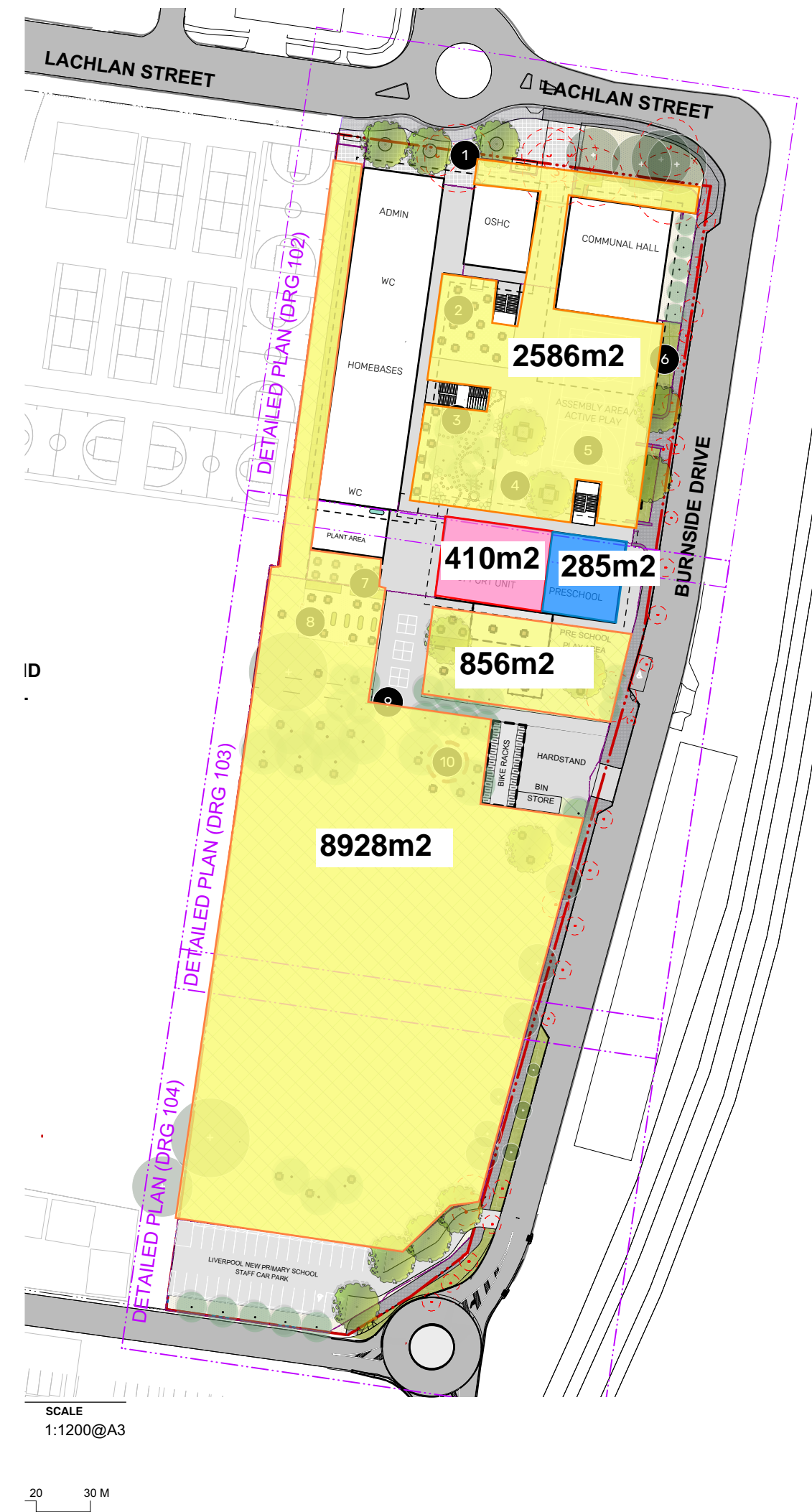
1240 STUDENTS = 12,400M2

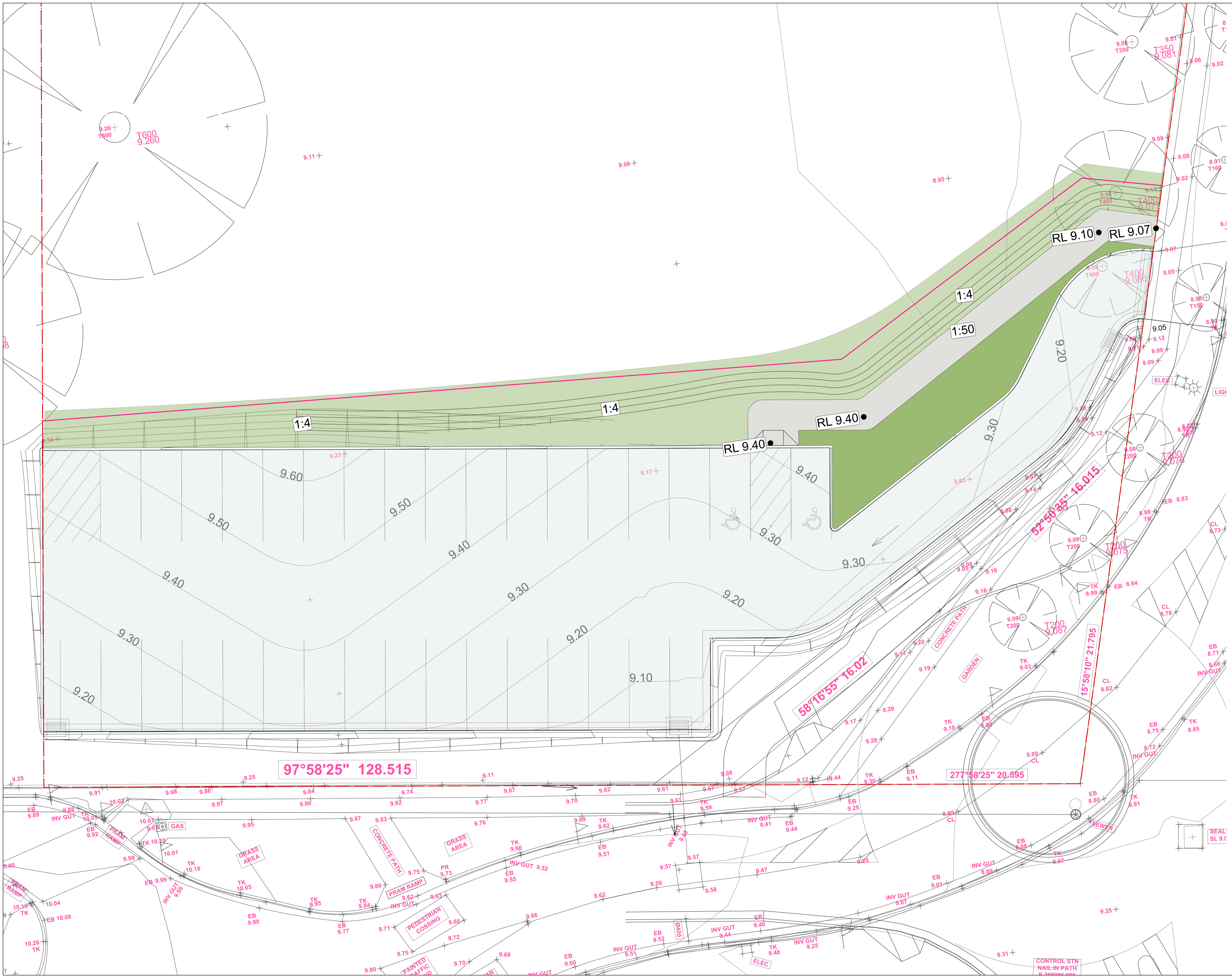
PRE SCHOOL STUDENT UNENCUMBERED PLAY SPACE 7M2/STUDENT

40 STUDENTS = 280M2

TOTAL SCHOOL TARGET = 12,680M2

TOTAL ACHIEVED = 13,065M2





**PROJECT TEAM**

**ARCHITECT**  
NBR ARCHITECTURE  
4 Glen St, Milsons Point NSW 2061  
02 9552 2344

**PROJECT MANAGER**  
ADCO  
Level 1, 7-9 West Street, North Sydney NSW 2060  
02 8437 5000

**CIVIL ENGINEER**  
Meinhardt Bonacci  
Level 4, 88 Clarence St, Sydney NSW 2000  
02 8247 8400

ISSUE	DATE	DESCRIPTION	BY	APPD
A	20/10/2021	GRADING + LEVELS COORDINATION	KB	JK

Landscape Architect  
**NBR**SARCHITECTURE.  
LANDSCAPE

**NBR & PARTNERS Pty Ltd**  
Level 2, 4 Glen Street, Milsons Point NSW 2061  
T: 61 2 9552 2344 F: 61 2 9552 1308 W: www.nbrsarchitecture.com  
E: architecture@nbrsarchitecture.com  
MIN 16 002 247 555 © 2021  
Any form of replication of this drawing in full or in part without the written permission of NBR&PARTNERS Pty Ltd constitutes an infringement of the copyright.

21385  
**NEW LIVERPOOL PRIMARY SCHOOL**  
at  
18 Forbes Street, Liverpool  
for  
DEPARTMENT OF EDUCATION

DRAWING TITLE  
**REVISED ACCESSIBLE PARKING**

PROJECT STAGE  
STAGE

**NOT FOR CONSTRUCTION**

NORTH  
SCALE  
1:400  
SHEET SIZE  
A1

DRAWING NUMBER  
SK-03

ISSUE  
A