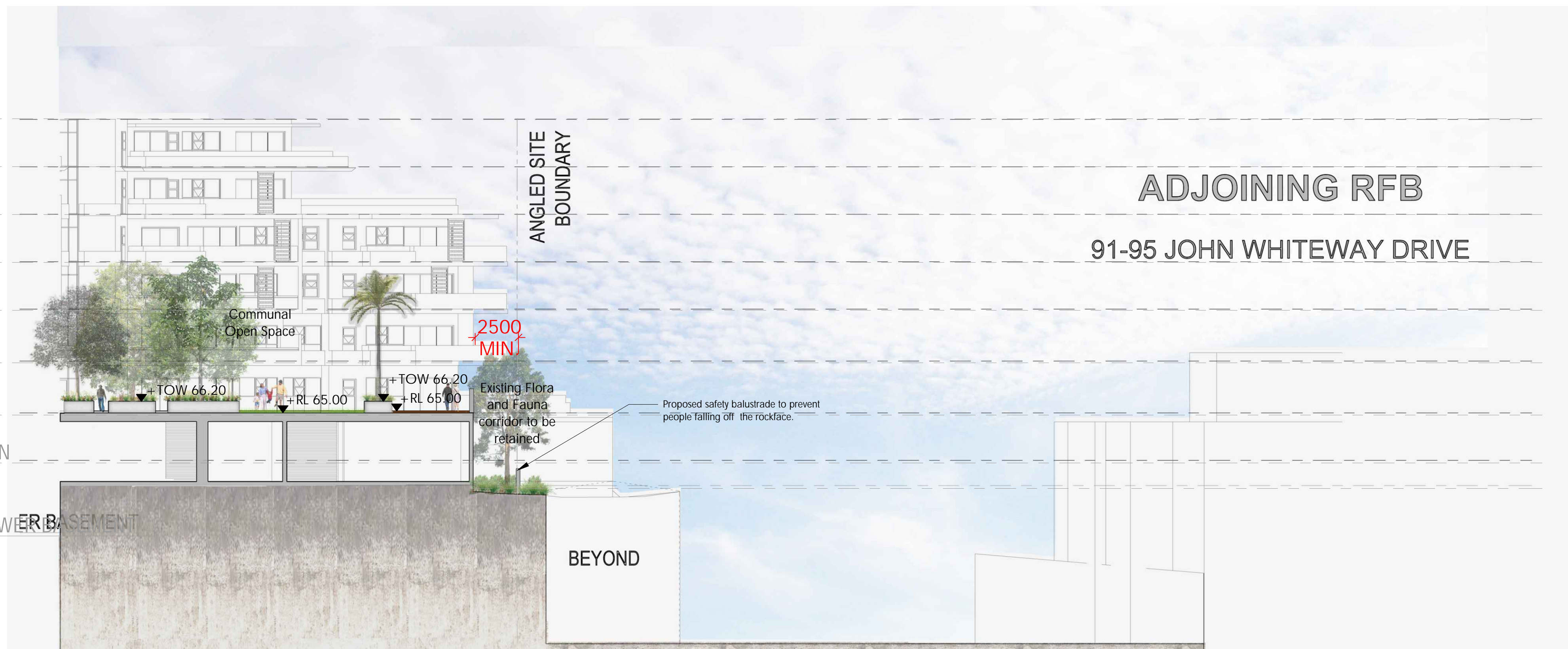
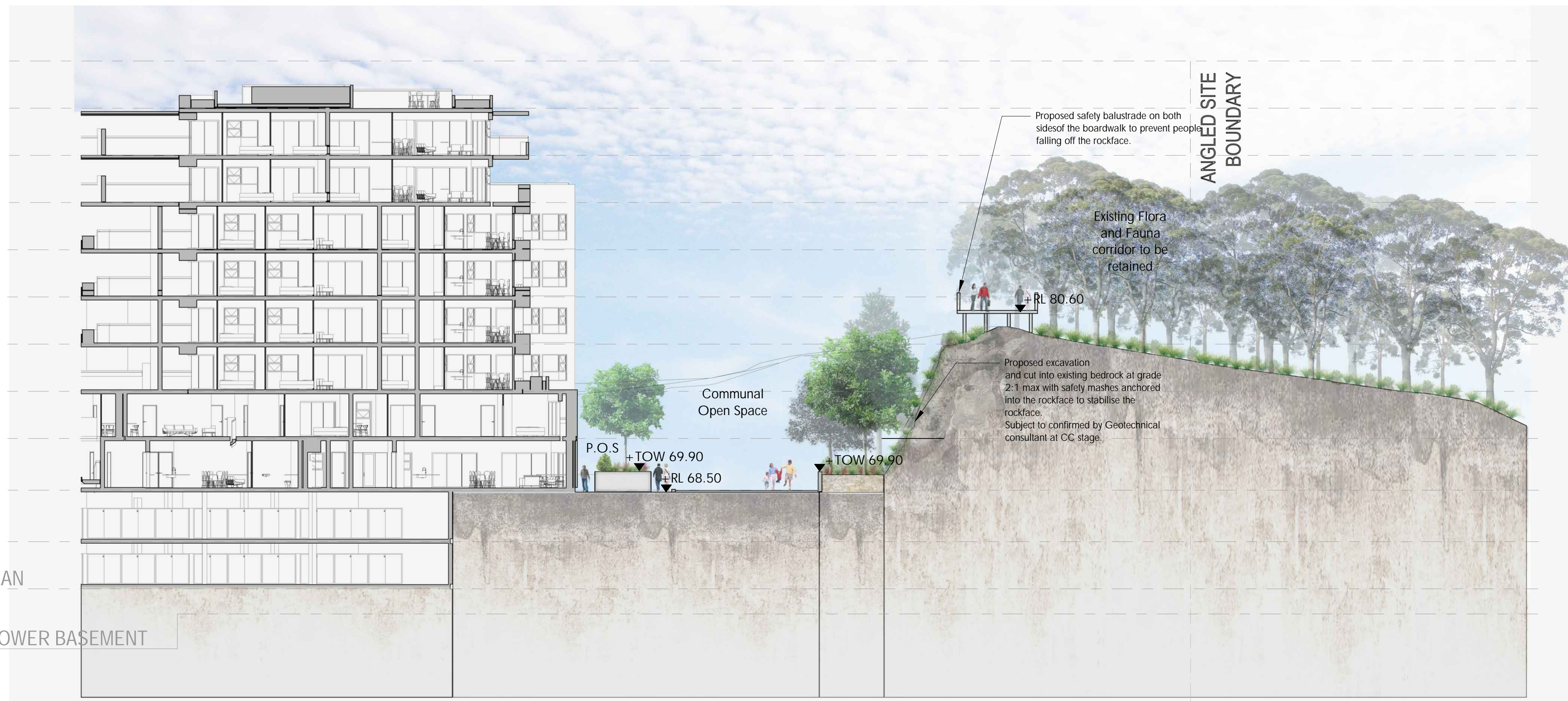


- LEVEL 6
RL 84.80
- LEVEL 5
RL 81.60
- LEVEL 4
RL 78.40
- LEVEL 3
RL 75.20
- LEVEL 2
RL 72.00
- LEVEL 1
RL 68.50
- GFL
RL 65.00
- BASEMENT PLAN
RL 61.80
- RL 60.10 - LOWER BASEMENT



SECTION GG
SCALE 1:400 @A3

- LEVEL 10
RL 97.60
- LEVEL 9
RL 94.40
- LEVEL 8
RL 91.20
- LEVEL 7
RL 88.00
- LEVEL 6
RL 84.80
- LEVEL 5
RL 81.60
- LEVEL 4
RL 78.40
- LEVEL 3
RL 75.20
- LEVEL 2
RL 72.00
- LEVEL 1
RL 68.50
- GFL
RL 65.00
- BASEMENT PLAN
RL 61.80
- RL 60.10 - LOWER BASEMENT



SECTION HH
SCALE 1:400 @A3

Rev:	Revision note:	Date:	Dwn by:
E	FOR DA APPROVAL	14.02.20	LZ
F	FOR DA APPROVAL	20.02.20	LZ
G	AMENDMENTS FOR DA APPROVAL	22.06.20	PG/LZ
H	AMENDMENTS FOR DA APPROVAL	17.07.20	PG/LZ
I	AMENDMENTS FOR DA APPROVAL	06.08.20	PG/LZ
J	AMENDMENTS FOR DA APPROVAL	07.08.20	PG/LZ
K	AMENDMENTS FOR DA APPROVAL	21.08.20	LZ
L	AMENDMENTS FOR DA APPROVAL	14.09.20	PG
M	AMENDMENTS FOR DA APPROVAL	19.10.20	JG/LZ
N	AMENDMENTS FOR DA APPROVAL	11.02.21	LZ
O	AMENDMENTS FOR DA APPROVAL	27.05.21	PG/LZ



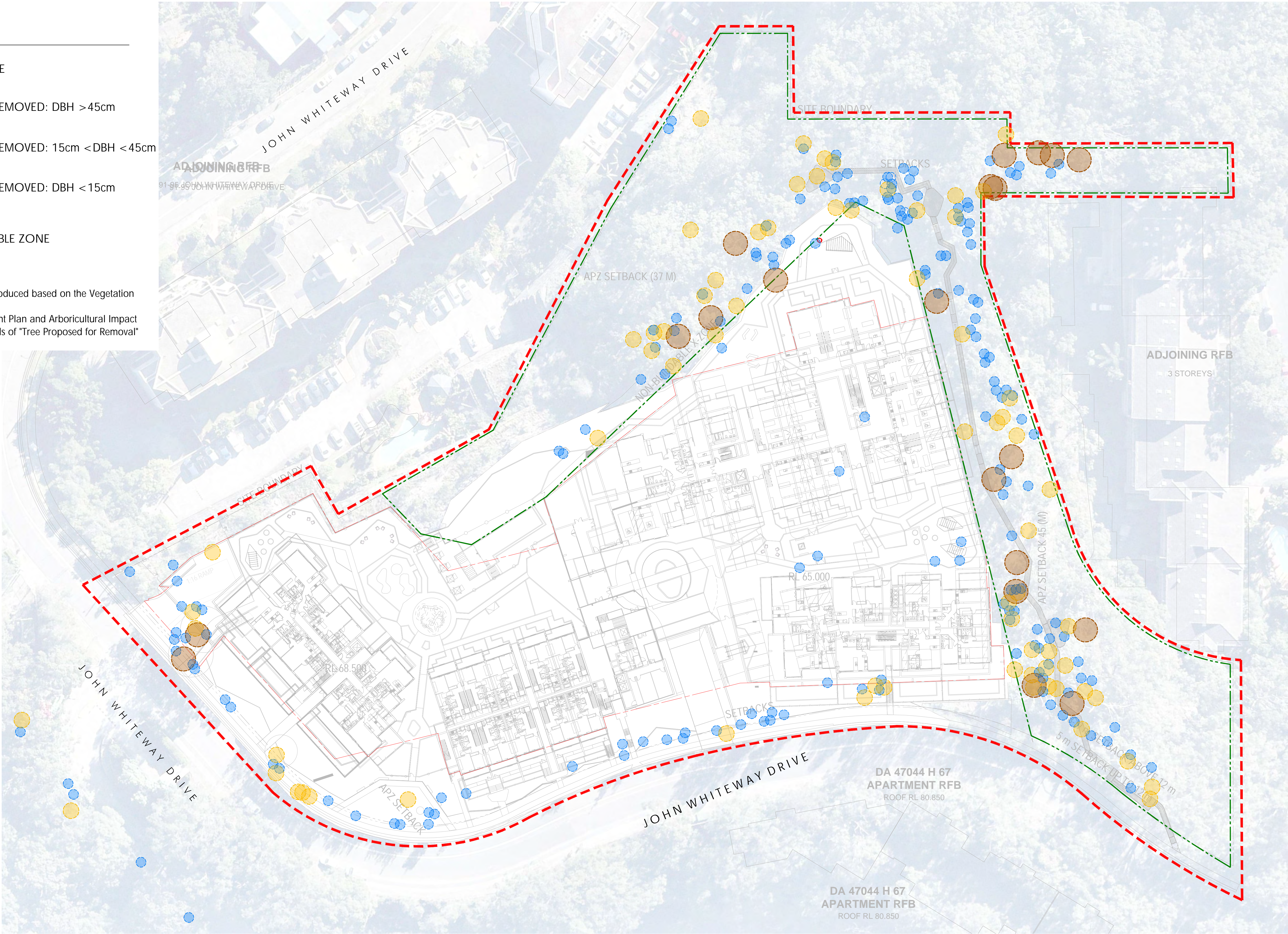


Indicative imagery for potential design outcome of the rockface stabilisation.

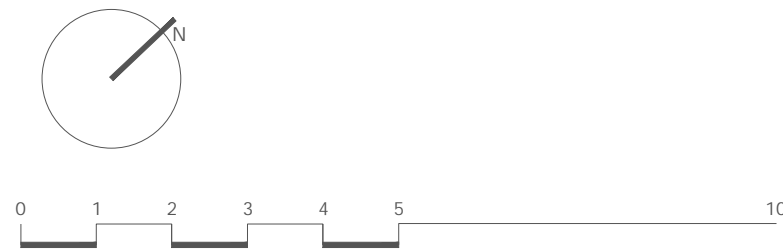
LEGEND

- EXTENT OF SITE
- TREES TO BE REMOVED: DBH >45cm
- TREES TO BE REMOVED: 15cm <DBH <45cm
- TREES TO BE REMOVED: DBH <15cm
- NON-BUILDABLE ZONE

PLEASE NOTE:
The site tree removal plan is produced based on the Vegetation Management Plan.
Refer to Vegetation Management Plan and Arboricultural Impact Assessment for the further details of "Tree Proposed for Removal"



Rev:	Revision note:	Date:	Dwn by:
E	FOR DA APPROVAL	14.02.20	LZ
F	FOR DA APPROVAL	20.02.20	LZ
G	AMENDMENTS FOR DA APPROVAL	22.06.20	PG/LZ
H	AMENDMENTS FOR DA APPROVAL	17.07.20	PG/LZ
I	AMENDMENTS FOR DA APPROVAL	06.08.20	PG/LZ
J	AMENDMENTS FOR DA APPROVAL	07.08.20	PG/LZ
K	AMENDMENTS FOR DA APPROVAL	21.08.20	LZ
L	AMENDMENTS FOR DA APPROVAL	14.09.20	PG
M	AMENDMENTS FOR DA APPROVAL	19.10.20	JG/LZ
N	AMENDMENTS FOR DA APPROVAL	11.02.21	LZ
O	AMENDMENTS FOR DA APPROVAL	27.05.21	PG/LZ



Project Title:
John Whiteway Drive JWD Development Gosford
Project Address:
89 John Whiteway Drive, Gosford
Drawing Title:
ADDENDUM - SITE TREE REMOVAL DIAGRAM
Location of all services is to be carried out by all contractors prior to commencement of works. Please Dial-Before-You-Dig Ph: 1100.
Refer plans by Architects, Engineers & Surveyors for other working drawings. Information on Distinctive plans is for reference & coordination only. This drawings are to be read in conjunction with proposed specifications & details. It is the responsibility of the contractor to notify Distinctive of any contradiction within the plans & receive appropriate direction prior to construction works. Final layout is to be determined on site and at the direction of the site supervisor. Plans are copyright to Distinctive Gardens & Interiors Pty Ltd.

Scale @ A1/A3:
1:400/ 1:800
Client:
JWD Developments Pty Ltd
Drawing Date:
27.05.21
Drawn/Checked
JG/LZ/PG/GW/MS/DB
Drawing Status:
DA
Project Number:
10-19
Drawing Number:
10-19.84
Issue:
O