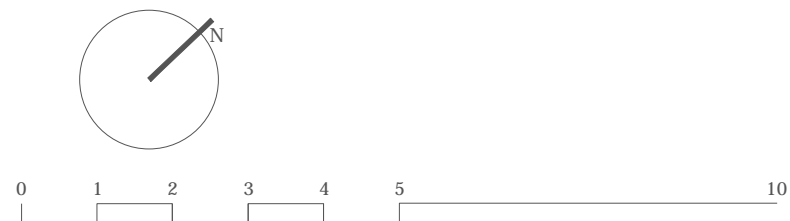




Rev.	Revision note:	Date:	Dwn by:
E.	FOR DA APPROVAL	14.02.20	I.Z.
F.	FOR DA APPROVAL	20.02.20	I.Z.
G.	AMENDMENTS FOR DA APPROVAL	22.06.20	PG/I.Z.
H.	AMENDMENTS FOR DA APPROVAL	17.07.20	PG/I.Z.
I.	AMENDMENTS FOR DA APPROVAL	06.08.20	PG/I.Z.
J.	AMENDMENTS FOR DA APPROVAL	07.08.20	PG/I.Z.
K.	AMENDMENTS FOR DA APPROVAL	21.08.20	I.Z.
L.	AMENDMENTS FOR DA APPROVAL	14.09.20	PG.
M.	AMENDMENTS FOR DA APPROVAL	19.10.20	JG/I.Z.
N.	AMENDMENTS FOR DA APPROVAL	11.02.21	I.Z.
O.	AMENDMENTS FOR DA APPROVAL	27.05.21	PG/I.Z.



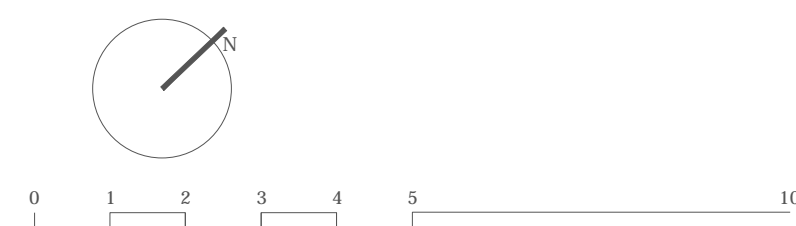


- LEVEL 7  
RL 88.00
- LEVEL 6  
RL 84.80
- LEVEL 5  
RL 81.60
- LEVEL 4  
RL 78.40
- LEVEL 3  
RL 75.20
- LEVEL 2  
RL 72.00
- LEVEL 1  
RL 68.50
- GFL  
RL 65.00
- BASEMENT PLAN  
RL 61.80



SECTION CC  
SCALE 1:300 @A3

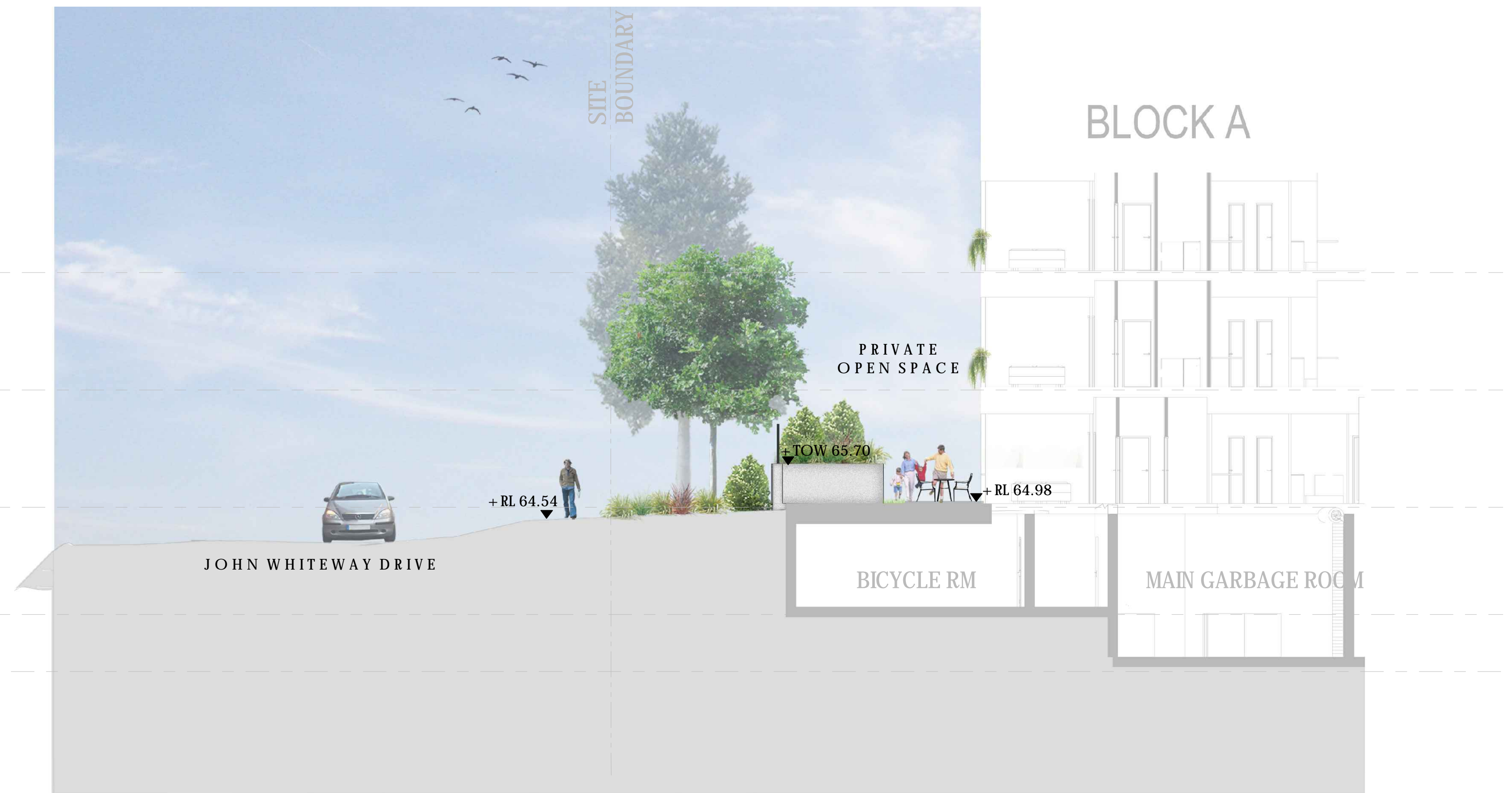
Rev.	Revision note:	Date:	Dwn by:
E.	FOR DA APPROVAL	14.02.20	IJZ
F.	FOR DA APPROVAL	20.02.20	IJZ
G.	AMENDMENTS FOR DA APPROVAL	22.06.20	PG/IJZ
H.	AMENDMENTS FOR DA APPROVAL	17.07.20	PG/IJZ
I.	AMENDMENTS FOR DA APPROVAL	06.08.20	PG/IJZ
J.	AMENDMENTS FOR DA APPROVAL	07.08.20	PG/IJZ
K.	AMENDMENTS FOR DA APPROVAL	21.08.20	IJZ
L.	AMENDMENTS FOR DA APPROVAL	14.09.20	PG
M.	AMENDMENTS FOR DA APPROVAL	19.10.20	JG/IJZ
N.	AMENDMENTS FOR DA APPROVAL	11.02.21	IJZ
O.	AMENDMENTS FOR DA APPROVAL	27.05.21	PG/IJZ





- LEVEL 2  
RL 72.00
- LEVEL 1  
RL 68.50
- GFL  
RL 65.00
- BASEMENT PLAN  
RL 61.80
- RL 60.10 - LOWER BASEMENT

SECTION DD  
SCALE 1:200 @A3

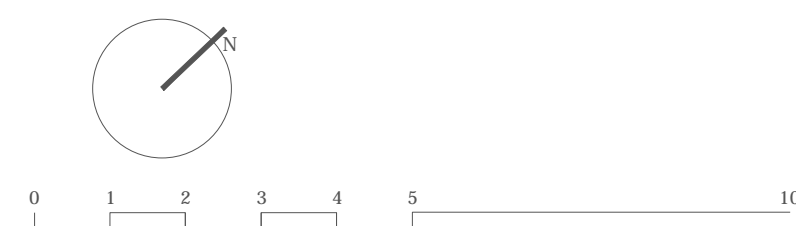


- LEVEL 3  
RL 75.20
- LEVEL 2  
RL 72.00
- LEVEL 1  
RL 68.50
- GFL  
RL 65.00
- BASEMENT PLAN  
RL 61.80

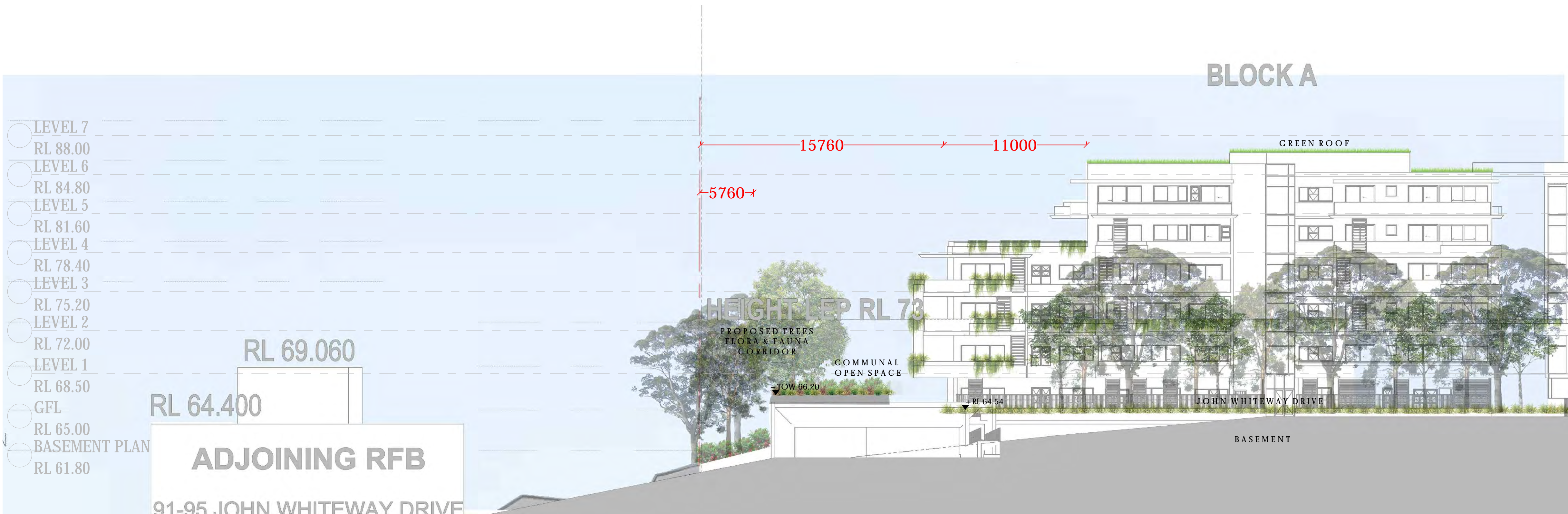
SECTION EE  
SCALE 1:200 @A3



Rev.	Revision note:	Date:	Dwn by:
E	FOR DA APPROVAL	14.02.20	IJ
F	FOR DA APPROVAL	20.02.20	IJ
G	AMENDMENTS FOR DA APPROVAL	22.06.20	PG/IJ
H	AMENDMENTS FOR DA APPROVAL	17.07.20	PG/IJ
I	AMENDMENTS FOR DA APPROVAL	06.08.20	PG/IJ
J	AMENDMENTS FOR DA APPROVAL	07.08.20	PG/IJ
K	AMENDMENTS FOR DA APPROVAL	21.08.20	IJ
L	AMENDMENTS FOR DA APPROVAL	14.09.20	PG
M	AMENDMENTS FOR DA APPROVAL	19.10.20	JG/IJ
N	AMENDMENTS FOR DA APPROVAL	11.02.21	IJ
O	AMENDMENTS FOR DA APPROVAL	27.05.21	PG/IJ

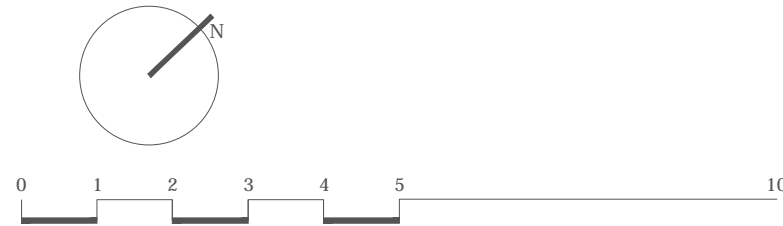




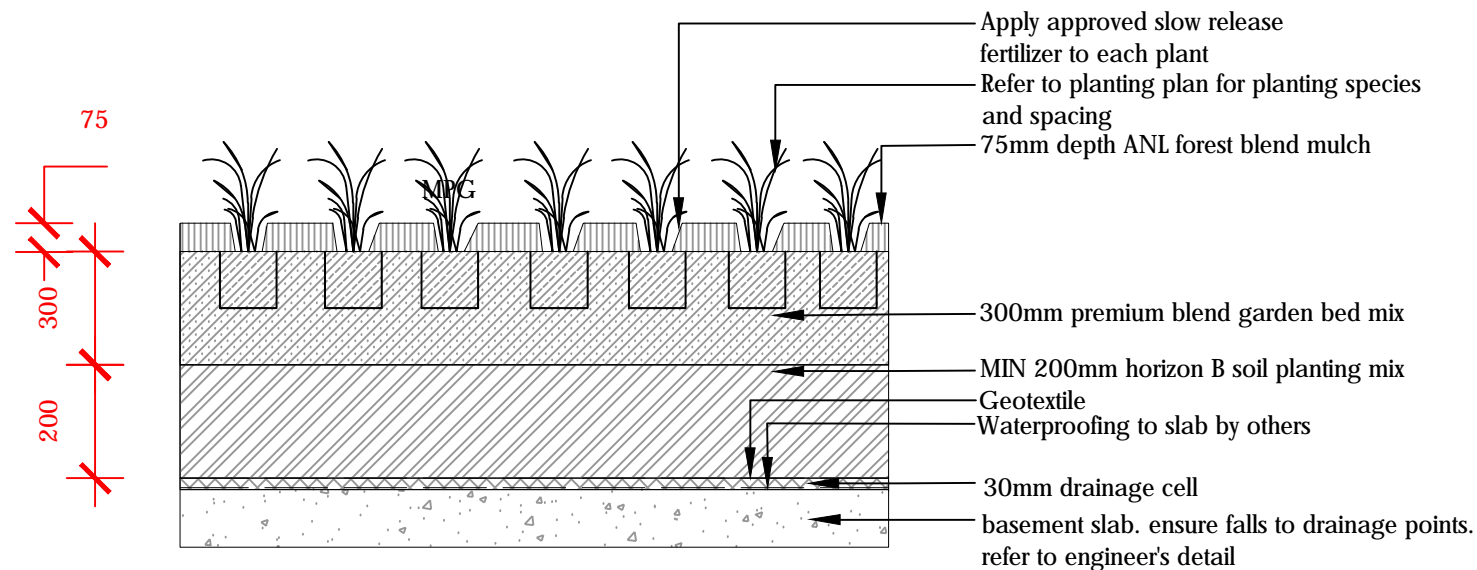


SECTION FF  
SCALE 1:400 @A3

Rev.	Revision note:	Date:	Dwn by:
E	FOR DA APPROVAL	14.02.20	IZ
F	FOR DA APPROVAL	20.02.20	IZ
G	AMENDMENTS FOR DA APPROVAL	22.06.20	PG/IZ
H	AMENDMENTS FOR DA APPROVAL	17.07.20	PG/IZ
I	AMENDMENTS FOR DA APPROVAL	06.08.20	PG/IZ
J	AMENDMENTS FOR DA APPROVAL	07.08.20	PG/IZ
K	AMENDMENTS FOR DA APPROVAL	21.08.20	IZ
L	AMENDMENTS FOR DA APPROVAL	14.09.20	PG
M	AMENDMENTS FOR DA APPROVAL	19.10.20	JG/IZ
N	AMENDMENTS FOR DA APPROVAL	11.02.21	IZ
O	AMENDMENTS FOR DA APPROVAL	27.05.21	PG/IZ

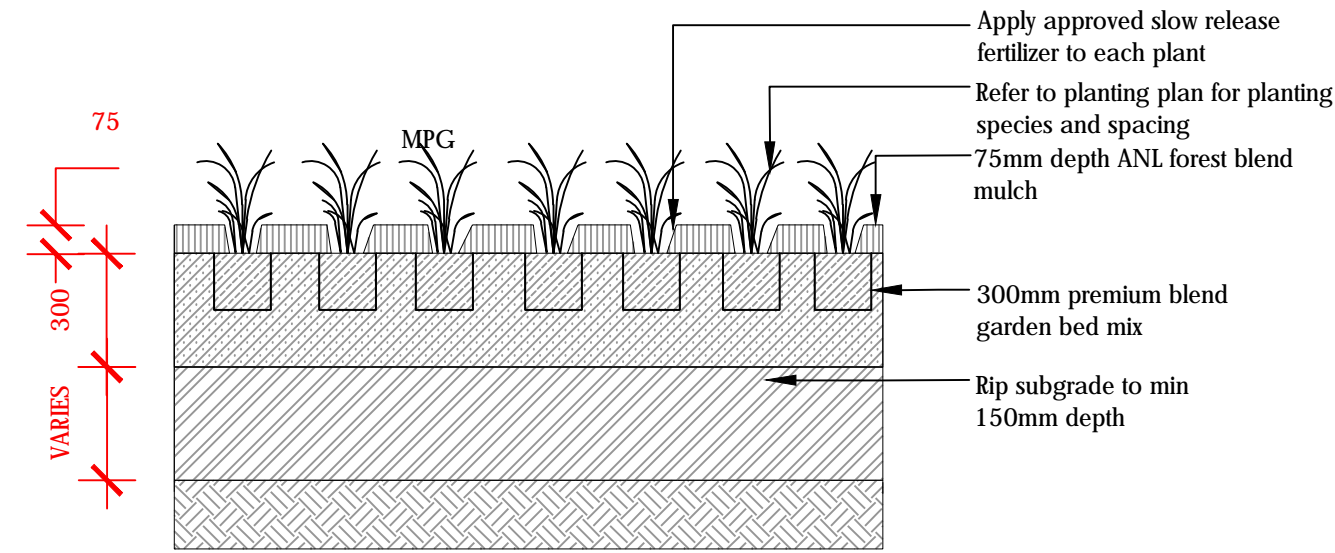






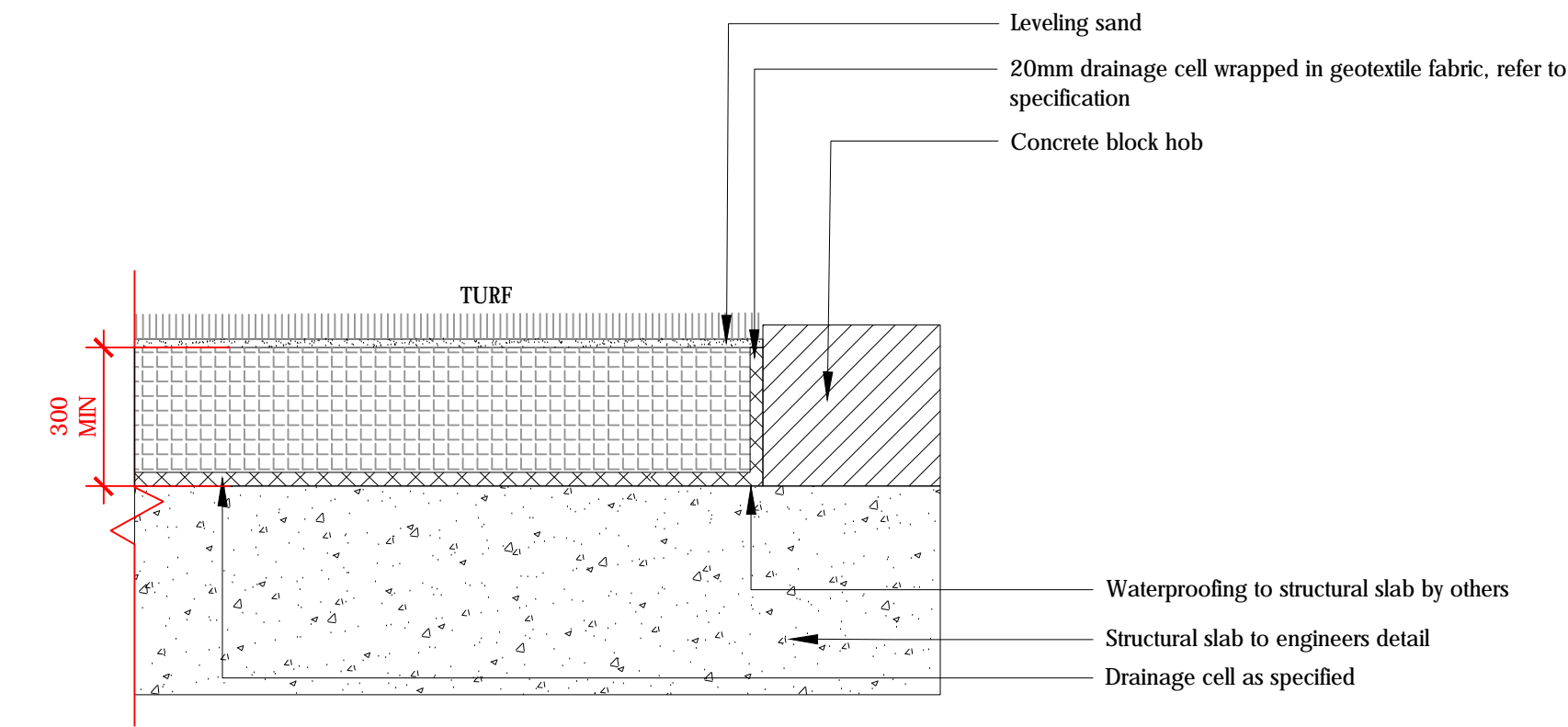
MASS PLANTING ON SLAB DETAIL

1:20 - TYPICAL SECTION



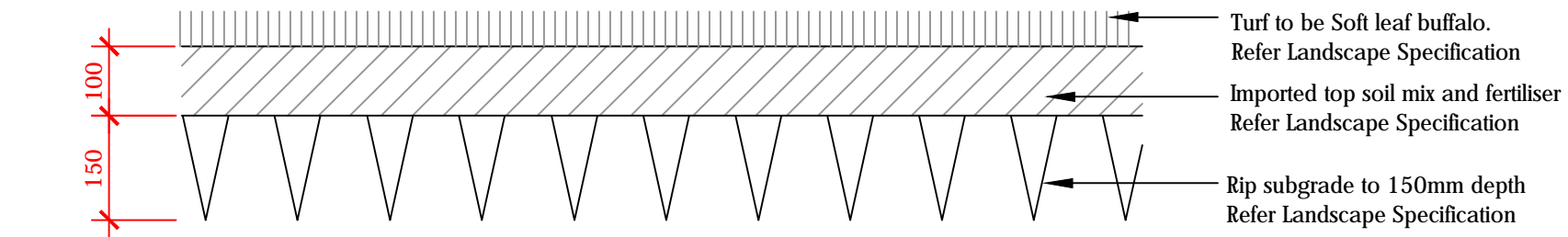
MASS PLANTING ON GRADE DETAIL

1:20 - TYPICAL SECTION



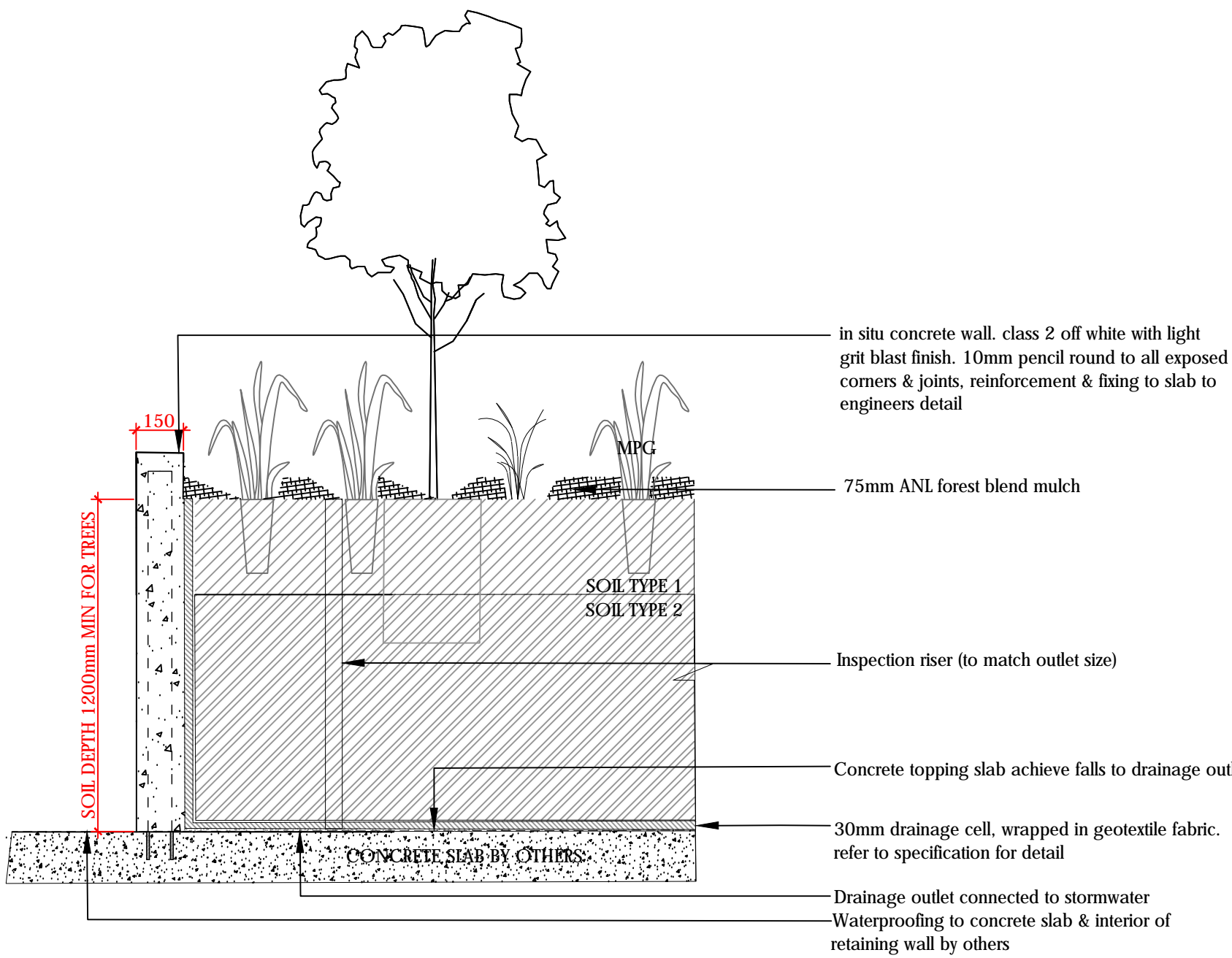
TURF ON SLAB DETAIL

SECTION 1:10



TURF ON GRADE DETAIL

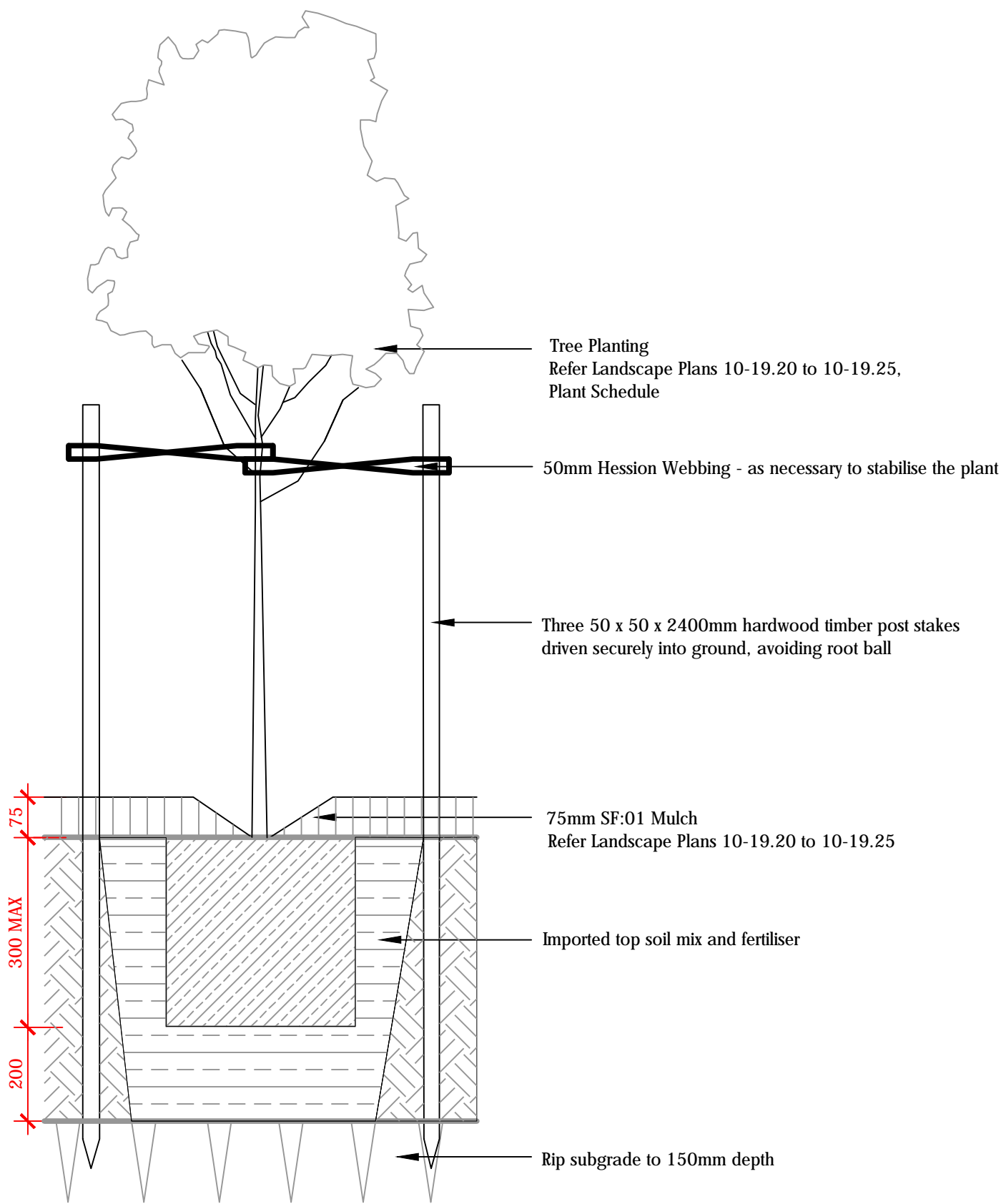
SECTION 1:10



TREES IN PLANTER BOX DETAIL

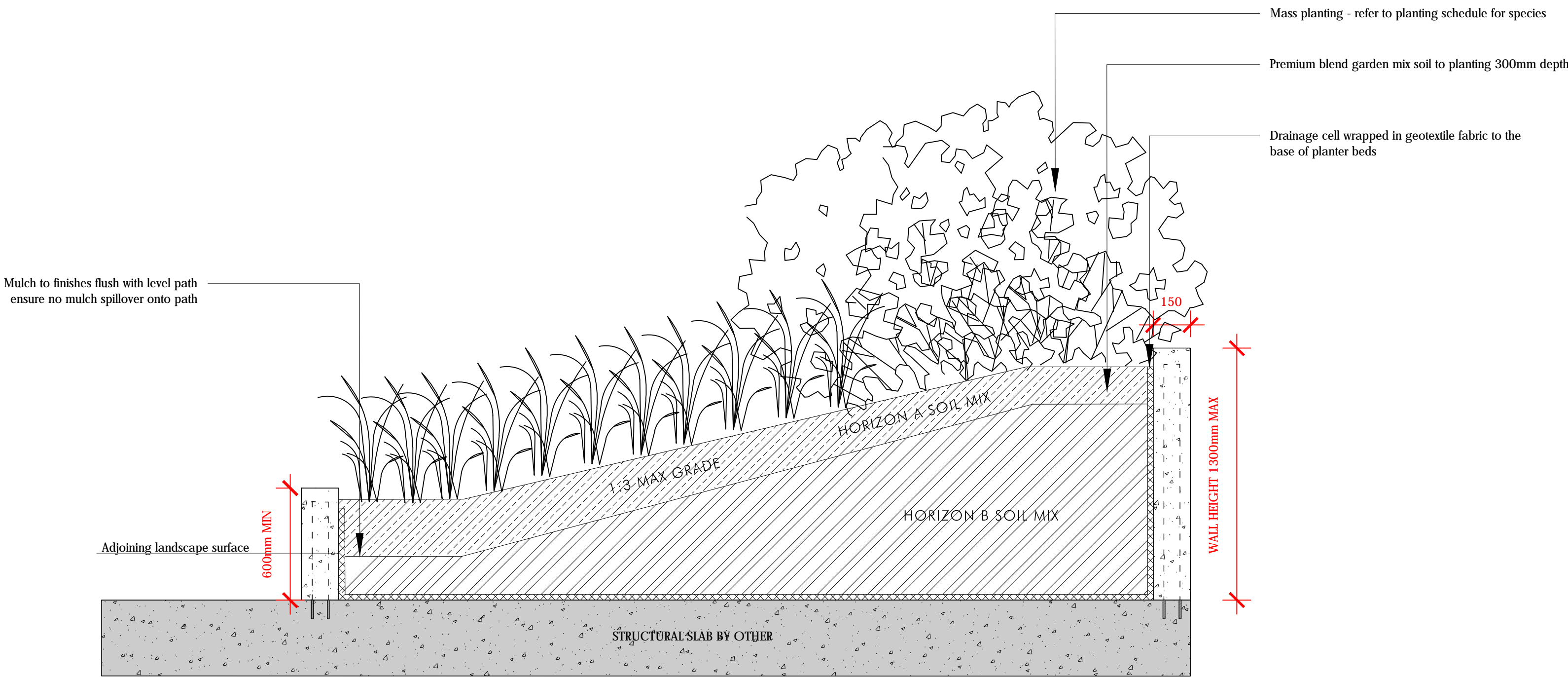
1:20 - TYPICAL SECTION

75L TREE



75L TREE PLANTING DETAIL

SECTION 1:10

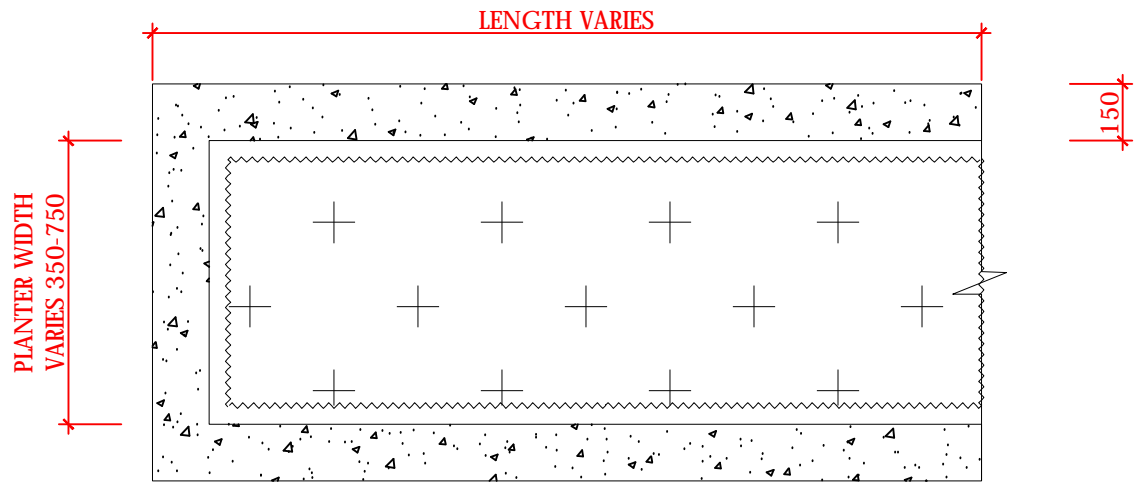


Adjoining Landscape Surface LANDSCAPE MOUNDING

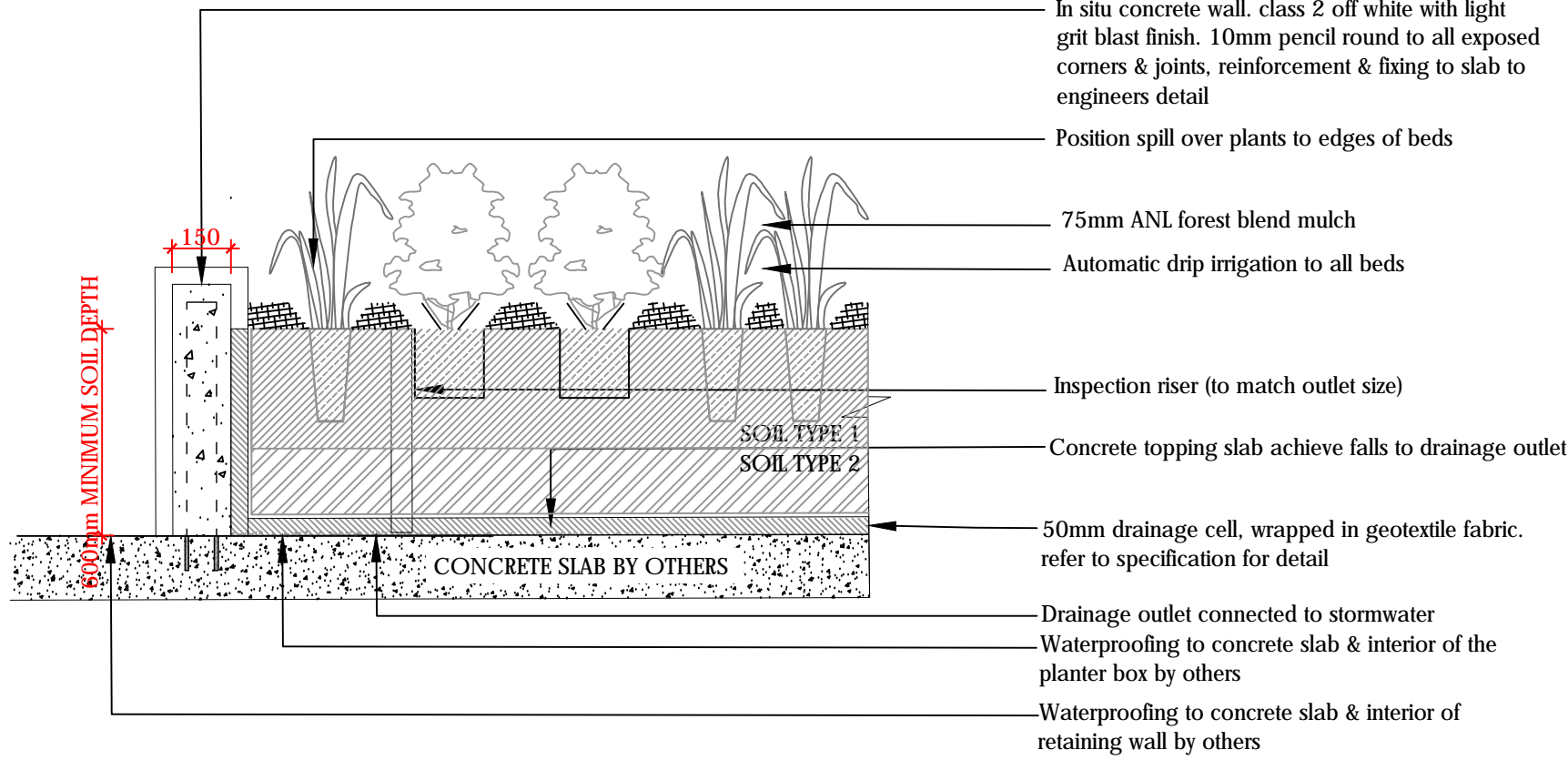
LANDSCAPE PLANTER BOX MOUNDING - TYPICAL

SCALE 1:20

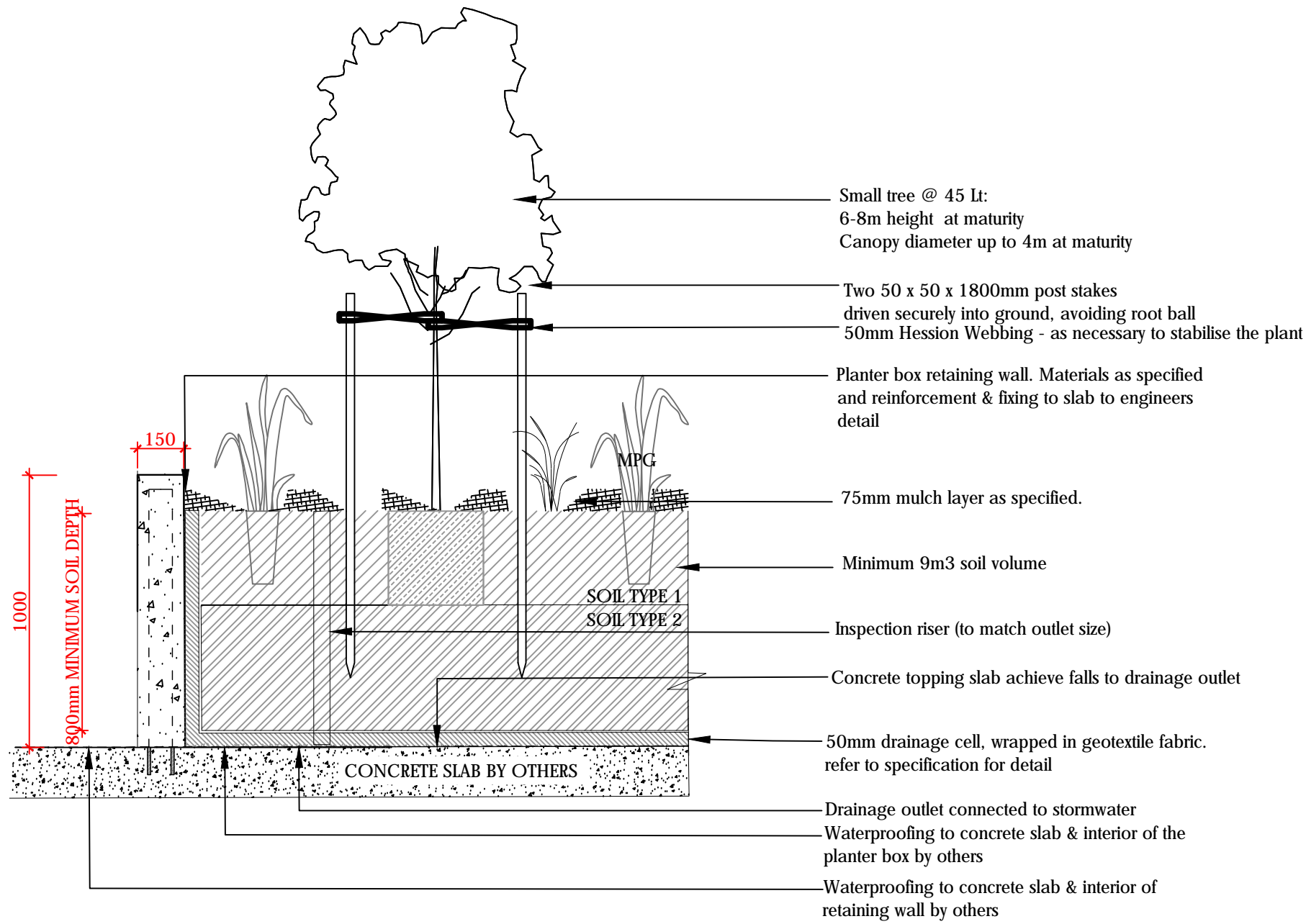




ADG GUIDELINE COMPLIANT  
PLANTER BOX WITH SHRUBS AND GROUNDCOVERS ON THE BUILDING  
1:20 - TYPICAL PLAN

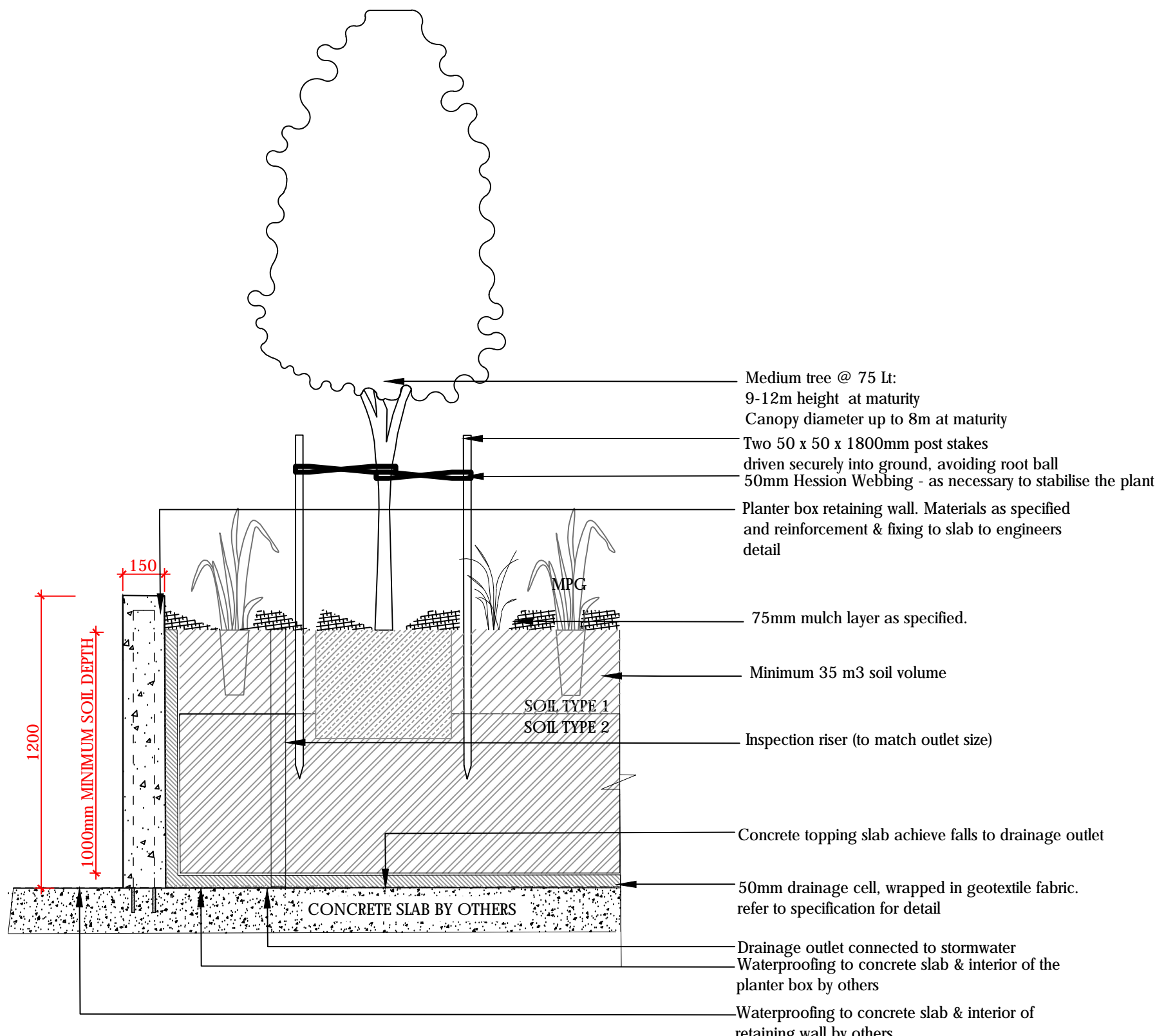


ADG GUIDELINE COMPLIANT  
PLANTER BOX WITH SHRUBS AND GROUNDCOVERS ON THE BUILDING  
1:20 - TYPICAL SECTION



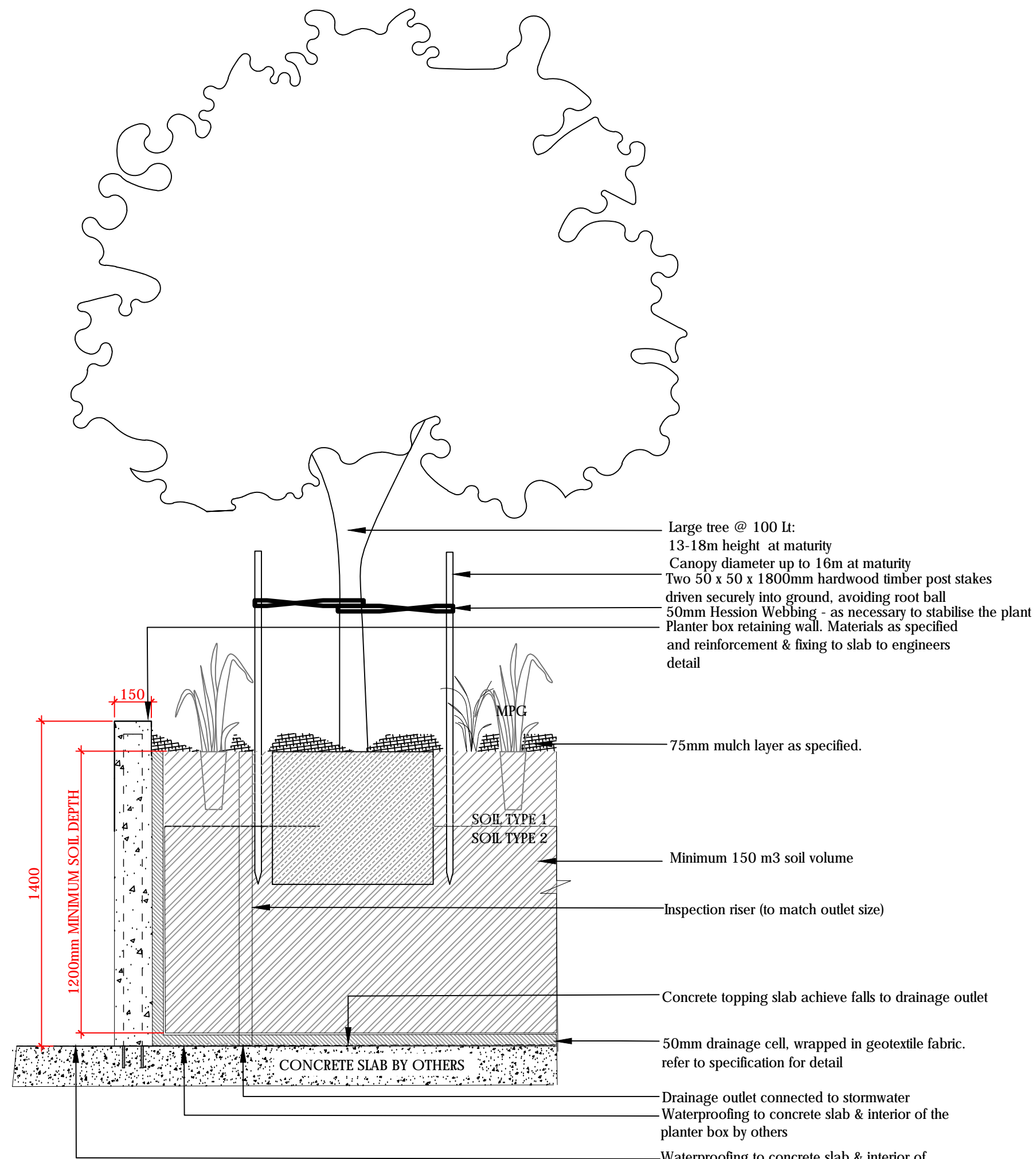
ADG GUIDELINE COMPLIANT  
SMALL TREES IN PLANTER BOX DETAIL  
1:20 - TYPICAL SECTION

NOTE: MINIMUM SOIL VOLUME FOR SMALL TREES IS 9m3 & APPROXIMATE SOIL AREA 3.5m x 3.5m OR EQUIVALENT



ADG GUIDELINE COMPLIANT  
MEDIUM TREES IN PLANTER BOX DETAIL  
1:20 - TYPICAL SECTION

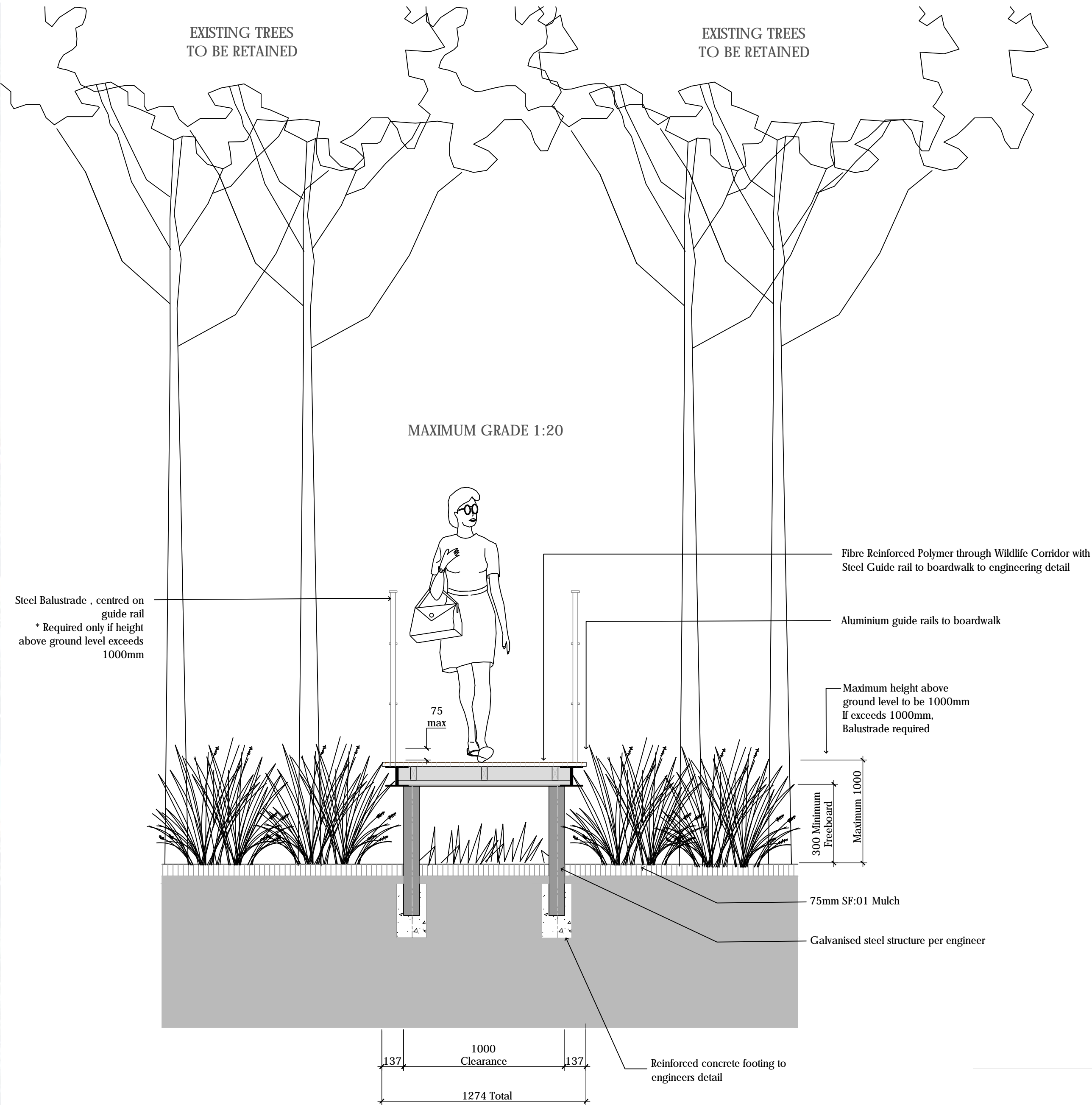
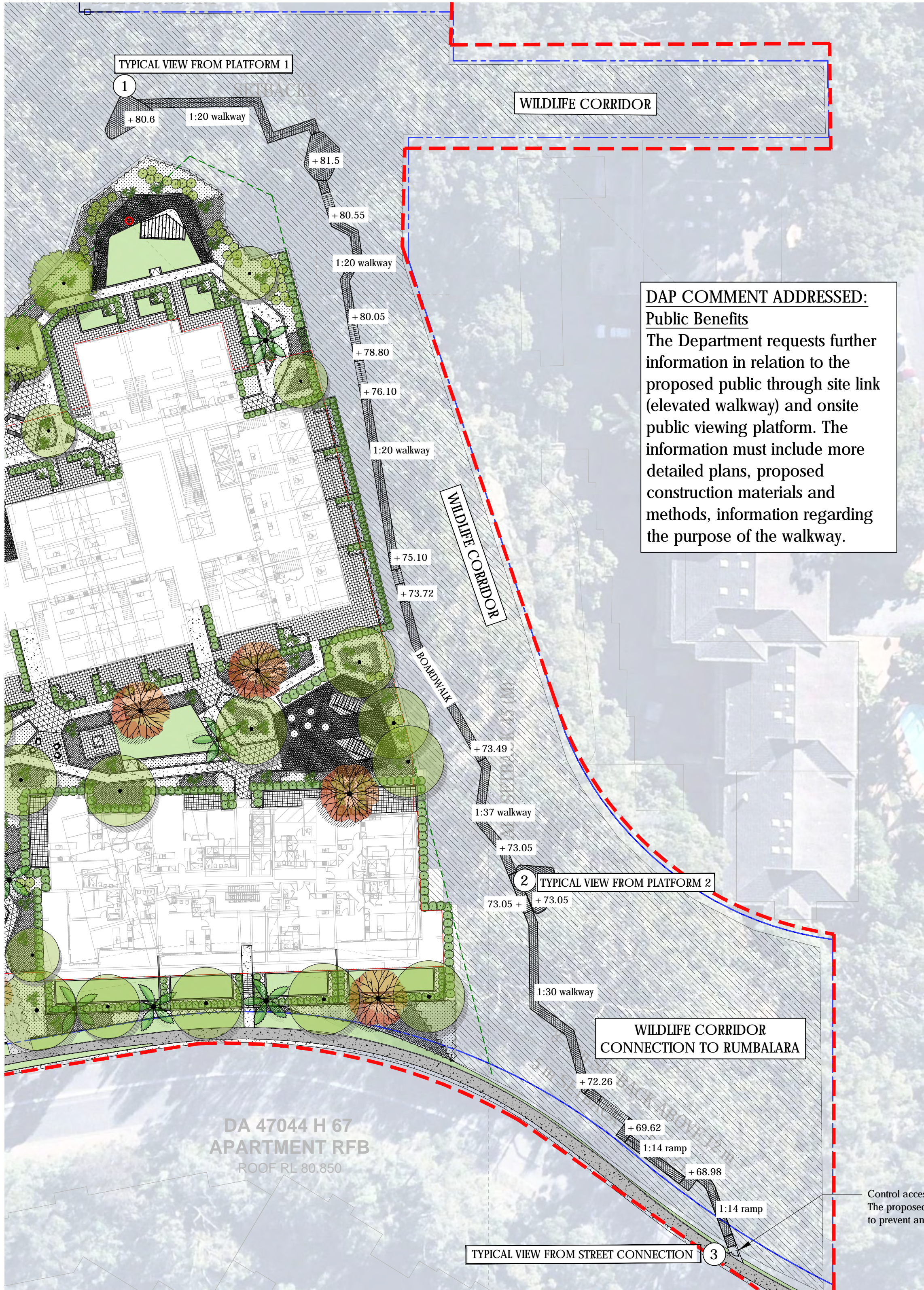
NOTE: MINIMUM SOIL VOLUME FOR MEDIUM TREES IS 35m3 & APPROXIMATE SOIL AREA 6m x 6m OR EQUIVALENT



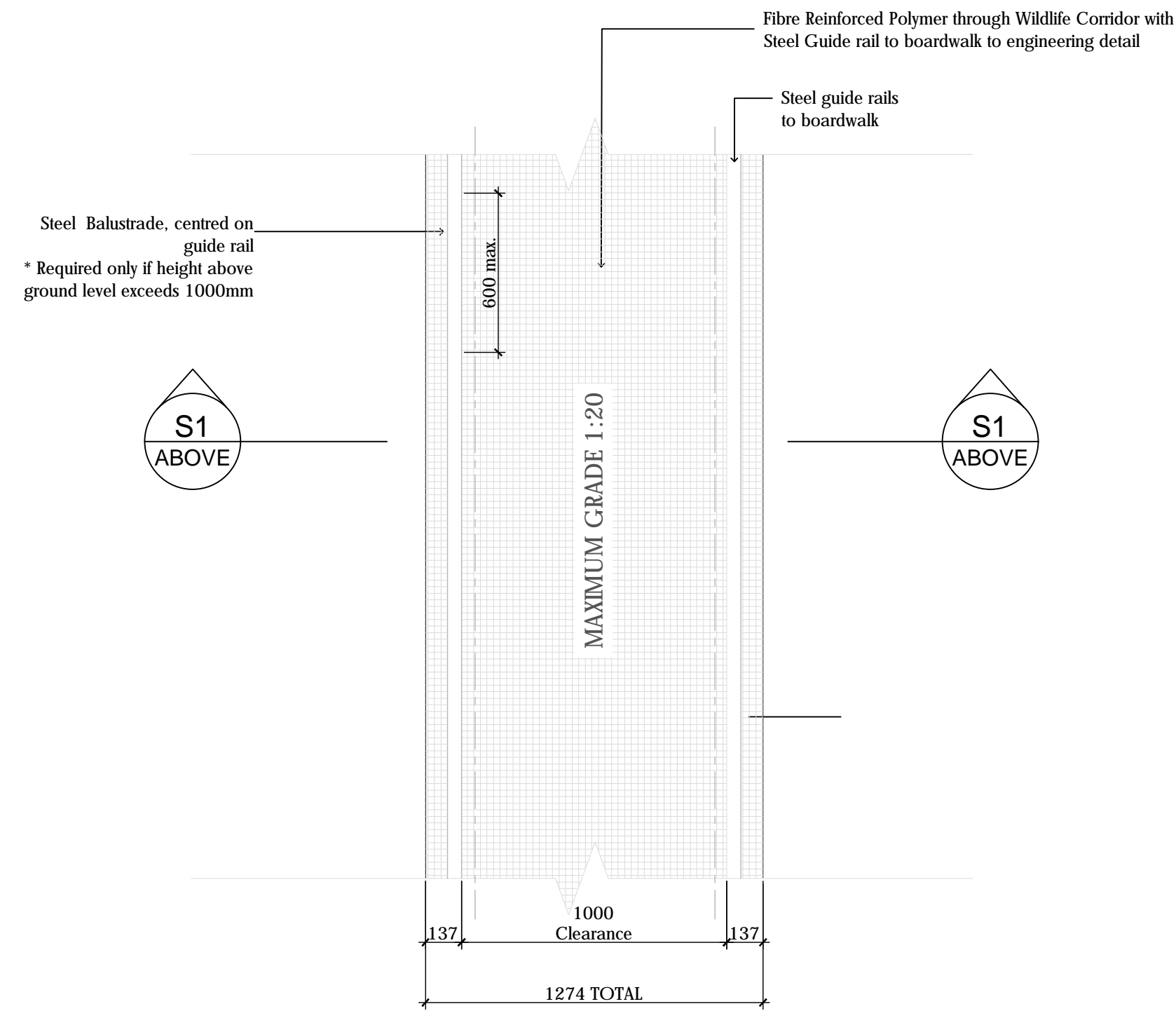
ADG GUIDELINE COMPLIANT  
LARGE TREES IN PLANTER BOX DETAIL  
1:20 - TYPICAL SECTION

NOTE: MINIMUM SOIL VOLUME FOR LARGE TREES IS 150m3 & APPROXIMATE SOIL AREA 10m x 10m OR EQUIVALENT





TYPICAL 1200MM WIDE BOARDWALK SECTION - 'S1'  
SECTION 1:20



TYPICAL 1200MM WIDE BOARDWALK PLAN  
PLAN 1:20



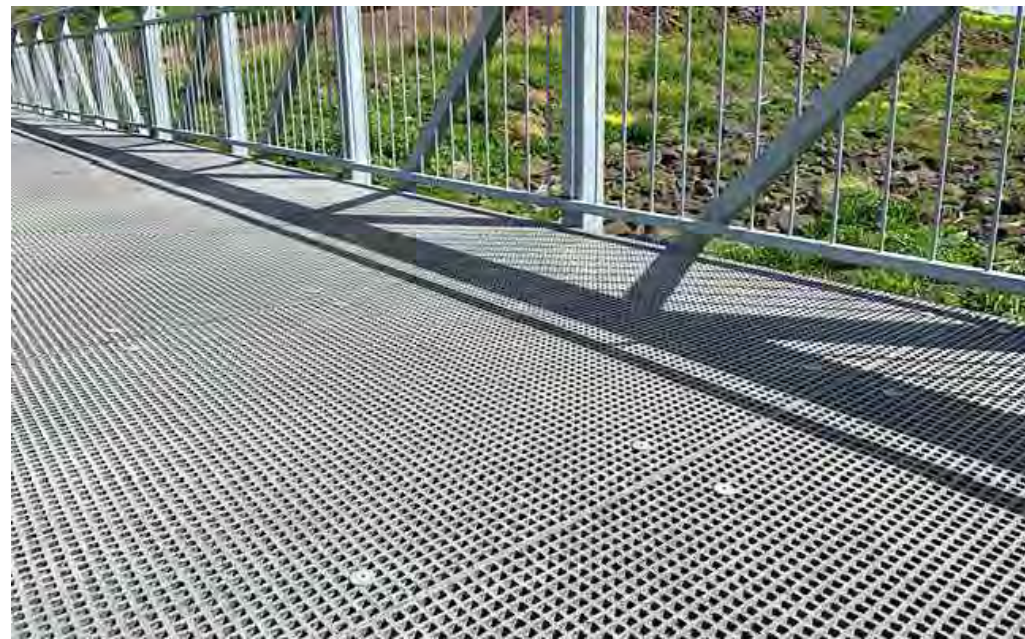
VIEWING PLATFORM AREAS



FIBRE REINFORCED POLYMER BOARDWALK



FIBRE REINFORCED POLYMER STEPS



FIBRE REINFORCED POLYMER BOARDWALK & STEEL BALUSTRADE