

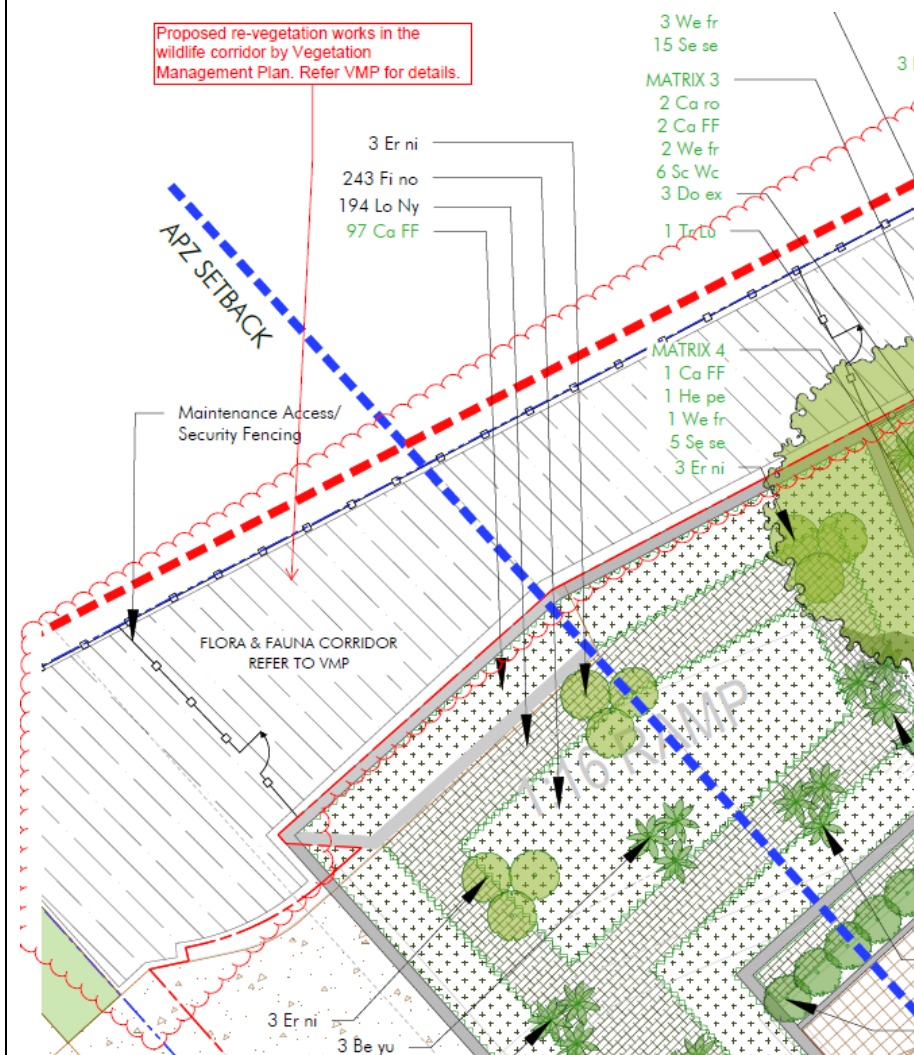
2. Information requested:

Please provide design solutions to soften the appearance of the protruding basement at the southeast corner of the site from John Whiteway Drive and neighbouring development, demonstrating capacity to meet Objective 3H-1.

Information Provided:

In order to soften the appearance of the protruding basement, there are two design solutions were proposed to embellish and cover the structure with the dense green plants. Firstly, the existing wildlife and vegetation corridor will be retained and additional revegetation works will be applied to the wildlife corridor. This is proposed and detail outlined by the Vegetation Management Plan, this design solution will soften the southern façade of the basement structure

Refer landscape DA document – Podium softscape plan 02, drawing number 10-19.41 for the proposed revegetation extent of the wildlife corridor below to the southern side of protruding basement:



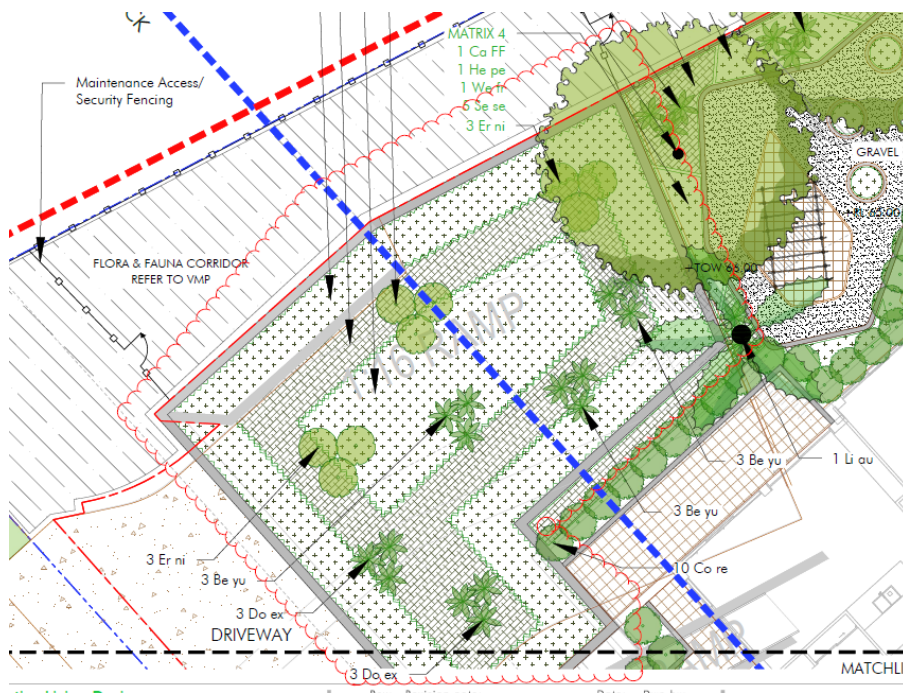
Please see the snip of the section FF to demonstrate the potential design outcome to soften the appearance of the protruding basement, Refer landscape DA document Section FF - drawing number 10-19.56:



And also a CGI was produced by the Architect to demonstrate the potential design outcome:



Secondly, a dense planting area have also been proposed over the basement structure with planting such spill over planting *Casuarina glauca* “Freefall” to soften the edge and visual impact of the structure, Refer landscape DA document – Podium softscape plan 02, drawing number 10-19.41 and below snip for the proposed soft landscape area over the protruding basement to soften the appearance



See below some examples for the proposed planting species:



Casuarina glauca “Freefall”



Eremophila nivea



Ficinia nodosa