

Dual scheme in the pipeline

By TRACEY PRISK

AN innovative \$3.2 million dual water scheme has been designed to allow residents in Orange's newest suburbs to access both treated and untreated water, depending on their intended usage.

The dual water scheme, slated for funding in next year's Orange City Council budget, will enable householders in new developments in north and south Orange to connect to both high-quality drinking water and lesser-quality non-potable water, sourced via Orange's stormwater harvesting scheme.

The non-potable water is intended to be used to flush toilets and water gardens.

About 1500 new houses in north Orange already have the dual water scheme in place.

However, council's water and sewerage strategic manager Wayne Beatty said the dual water scheme would be made available to 4500 houses by the end of this year or early 2013.

The non-potable water will be charged at the same rate as drinking water.

"In order to reduce water usages we have to price it appropriately," Mr Beatty said.

Council's infrastructure policy committee chair, Cr Sam Romano said the scheme would save on water treatment costs and bring Orange into line with statewide standards.

"Because of other major infrastructure projects, it's taken a number of years to get to this stage

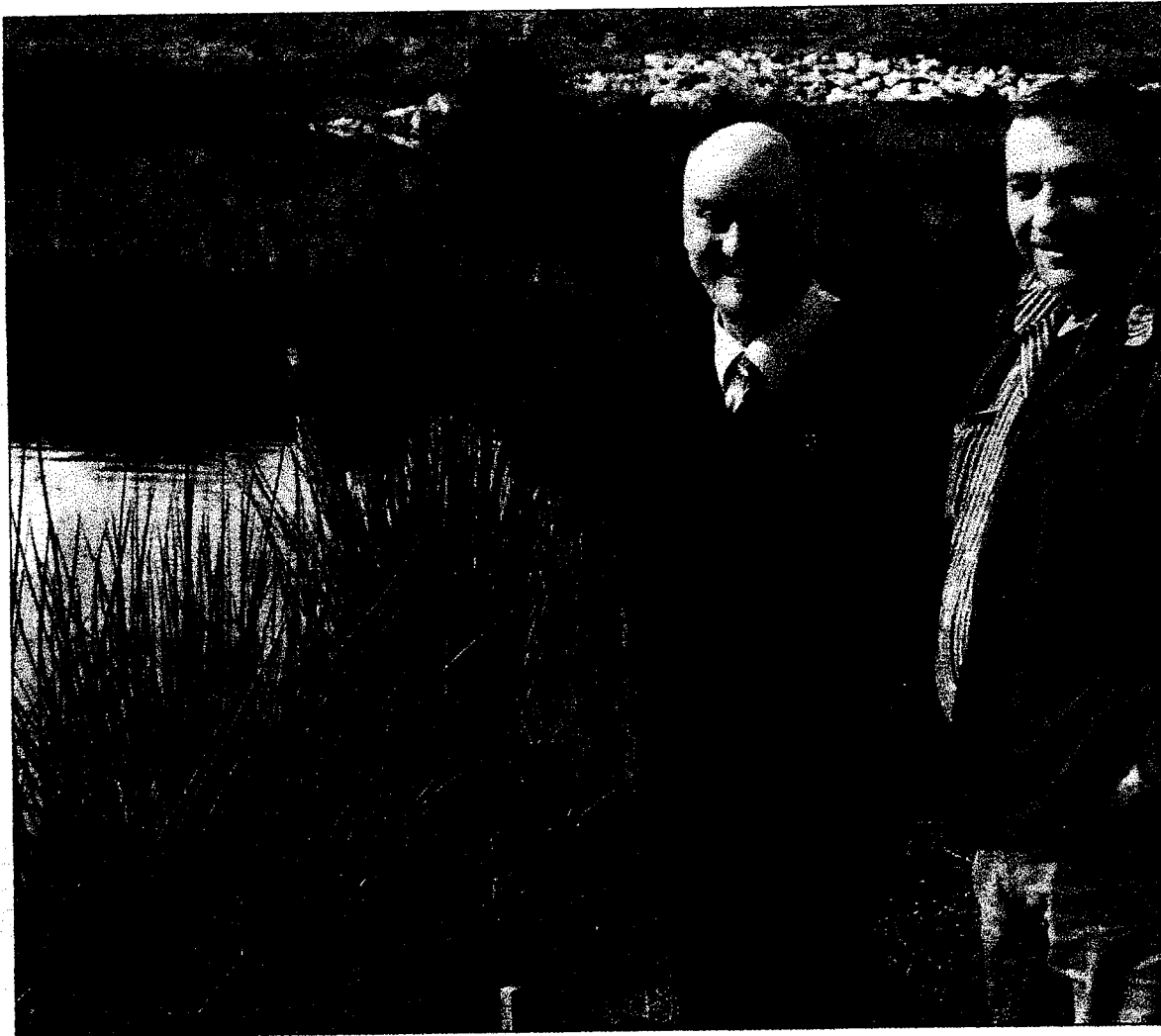
but I'm pleased the money is in next year's budget for this work to begin," he said.

The next stage in the project's development will involve laying six kilometres of water pipes, the construction of a pump house and the installation

of treatment facilities.

For health and safety reasons, drinking water will be delivered in blue pipes and wastewater will be supplied through purple pipes.

tracey.prisk@ro



PROJECT FLOWS: Orange City Council water and sewerage strategic manager Wayne Beatty visited the Somerfield development in North Orange with councillor Sam Romano.

p7 CWD 12.6.12