

2  
SK 001

Massing - Existing



1  
SK 001

Massing - Proposed



3  
SK 001

Location Map

1 : 500

INPATIENT ACCOMODATION			
Levels	Existing	Proposed: General (IPU)	Proposed: Mental Health Unit (IPU)
Ground Floor	47	30	
First Floor		49	36
Second Floor		31	36
Total beds	47	110	72
Combined total	47	182	

EXISTING			
Existing: Street address	Site m²	Floor m²	Zone
369-381 President Ave. Kirrawee NSW 2232 DP# 841502, Lot 1	5904.47	2061.61	SP1
63-65 Hotham Road Kirrawee NSW 2232 DP# 26995, Lot 24A	1615.34	321.41	SP1
61 Hotham Road Gymea NSW 2227 DP# 26995, Lot 23	644.45	134.71	SP1
2-4 Bidurgal Ave Kirrawee NSW 2232 DP# 29493, Lot 53	1355.60	213.92	R2
Total m²	9519	2731.65	
FSR	0.29:1		

Hotham House Retained Option C	
Dwg No	Sheet Name
SK 001	Title Sheet
SK 025	Proposed Site Context Plan
SK 165	Basement Plan - Hotham House Retained
SK 166	Ground Floor Plan - Hotham House Retained
SK 167	First Floor Plan - Hotham House Retained
SK 300	Elevations
SK 401	Sections
SK 402	Detail Section
SK 411	Detail Section

Response to Submissions

Consultant Team:

Traffic Engineer:  
BCA Consultant:  
Electrical Consultant:  
Hydraulic Consultant:  
Mechanical Services Engineer:  
Landscape Architect:  
Surveyor:

ML Traffic Engineers  
Blackett Maguire and Goldsmith  
Erbas and Associates  
Erbas and Associates  
Habit 8  
Dunlop Thorpe & Co.

- Ph. 02 8004 2434  
- Ph. 02 9211 7777  
- Ph. 02 9437 1022  
- Ph. 02 9437 1022  
- Ph. 02 9437 1022  
- Ph. 04 2520 6047  
- Ph. 02 9283 6677

Amendment Issue:		
No.	Description	Date
59	Response to Submissions	22/12/21



imagescape design studios

G 10 55 Miller St, Pyrmont NSW 2009 02 9518 6800 02 8078 6677 studio@imagescape.com.au imagescape.com.au

imagescape design studios (ABN: 24 137 940 017) is an architect corporation registered under the provisions of the NSW Architects Act 2003. Nominated architects are Christine Kelly registration no. 6000 & Stephen Phillips registration no. 4608

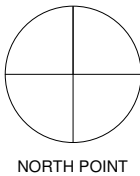


Macquarie HEALTH CORPORATION

President Private Hospital - Hotham House Option C

Macquarie Health Corporation

369-381 President Ave, 61-65 Hotham Rd, 2-4 Bidurgal Ave  
Kirrawee NSW



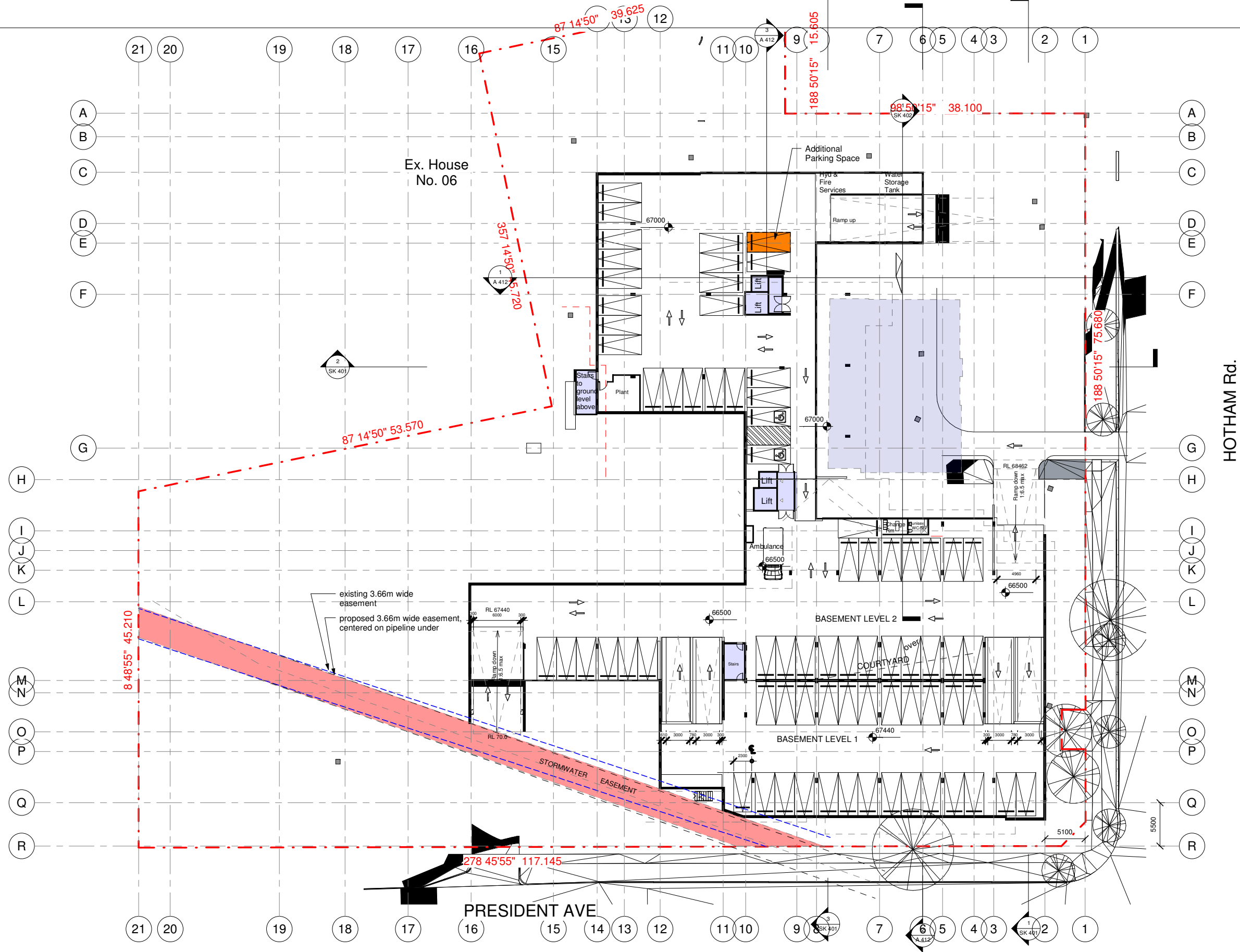
Title Sheet

Project numberMacHealth-06		SK 001	
Date	21/06/2021		
Drawn by	NA, AZ	Scale @ A1	Plot stamp:
Checked by	SP	1 : 500	23/12/2021 11:35:57 AM
		Version:	59









1 Prop. Basement Plan  
SK 165 1 : 250

Response to Submissions

Consultant Team:

Traffic Engineer:  
BCA Consultant:  
Electrical Consultant:  
Hydraulic Consultant:  
Mechanical Services Engineer:  
Landscape Architect:  
Surveyor:

ML Traffic Engineers  
Blackett Maguire and Goldsmith  
Erbas and Associates  
Erbas and Associates  
Erbas and Associates  
Habit 8  
Dunlop Thorpe & Co.

- Ph. 02 8004 2434  
- Ph. 02 9211 7777  
- Ph. 02 9437 1022  
- Ph. 02 9437 1022  
- Ph. 02 9437 1022  
- Ph. 04 2520 6047  
- Ph. 02 9283 6677

Amendment Issue:

No.	Description	Date
58	Additional Information	08/06/2021
59	Response to Submissions	22/12/21

**imagescape design studios**

imagescape.com.au

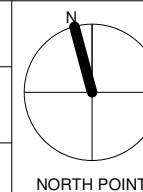
Imagescape design studios (ABN: 24 137 940 017) is an architect corporation registered under the provisions of the NSW Architects Act 2003. Nominated architects are Christine Kelly registration no. 6000 & Stephen Phillips registration no. 4608.



President Private Hospital - Hotham House Option C

**Macquarie Health Corporation**

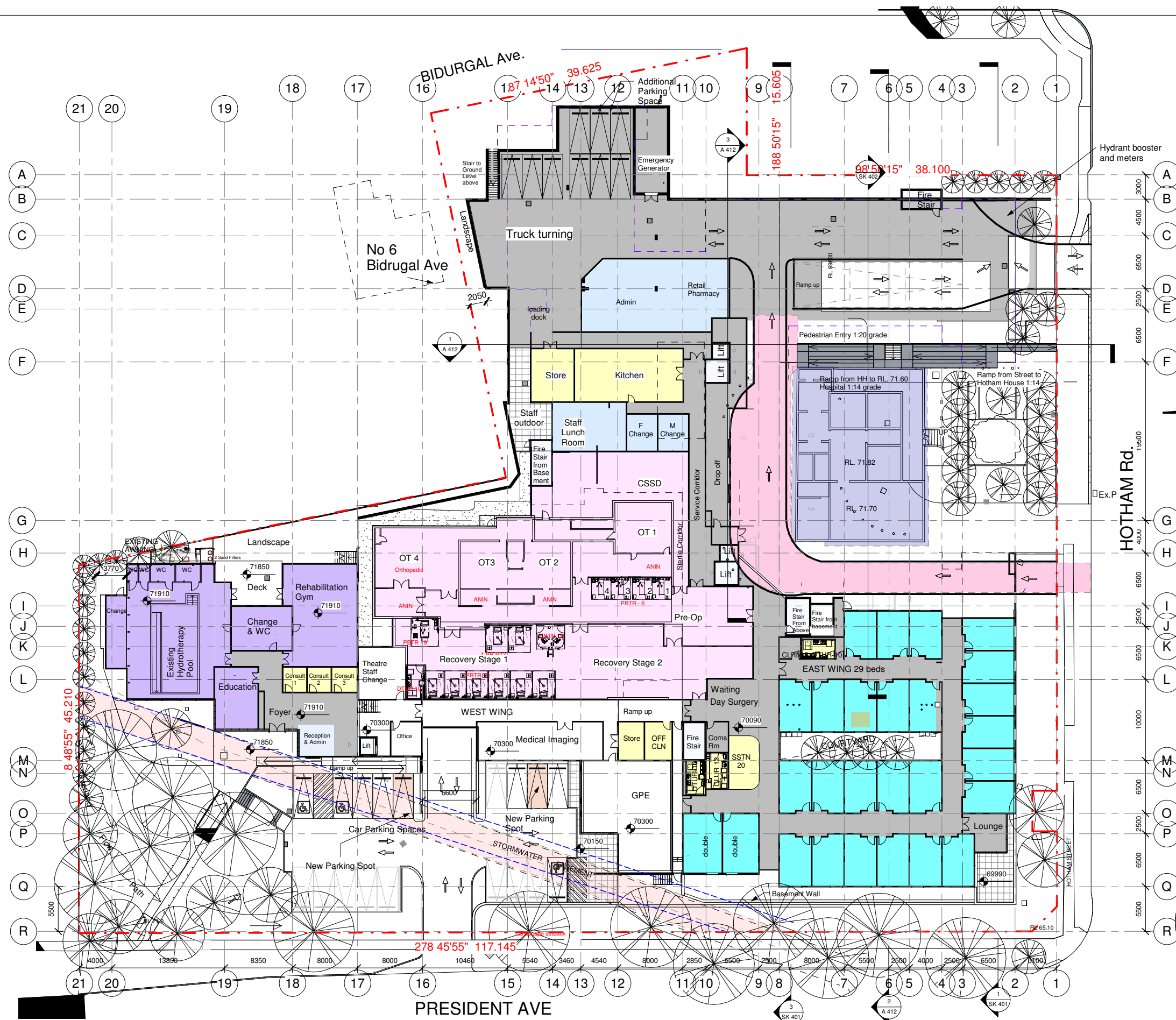
369-381 President Ave, 61-65  
Hotham Rd, 2-4 Biduralg Ave  
Kirrawee NSW



Basement Plan - Hotham House Retained

Project number	MacHealth-06	SK 165	
Date	21/06/2021		
Drawn by	Author	Scale @ A1	Plot stamp:
Checked by	Checker	1 : 250	23/12/2021 11:36:40 AM
			Version: 59

Y:\MacHealth\MACHEALTH-06\DP\previt\NG210625-MacHealth-06-R21-HothamHouseAlternat



- Department
- Administration
  - Courtyard
  - Inpatient
  - Services
  - Therapy
  - Treatment

Response to Submissions

Consultant Team:

Traffic Engineer:  
BCA Consultant:  
Electrical Consultant:  
Hydraulic Consultant:  
Mechanical Services Engineer:  
Landscape Architect:  
Surveyor:

ML Traffic Engineers  
Blackett Maguire and Goldsmith  
Erbas and Associates  
Erbas and Associates  
Erbas and Associates  
Habit 8  
Dunlop Thorpe & Co.

- Ph. 02 8004 2434  
- Ph. 02 9211 7777  
- Ph. 02 9437 1022  
- Ph. 02 9437 1022  
- Ph. 02 9437 1022  
- Ph. 04 2520 6047  
- Ph. 02 9283 6677

Amendment Issue:		
No.	Description	Date
58	Additional Information	08/06/2021
59	Response to Submissions	22/12/21

imagescape design studios

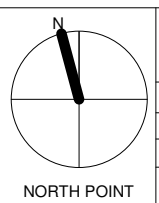
imagescape design studios (ABN: 24 137 940 017) is an architect corporation registered under the provisions of the NSW Architects Act 2003. Nominated architects are Christine Kelly registration no. 6000 & Stephen Phillips registration no. 4608



President Private Hospital - Hotham House Option C

**Macquarie Health Corporation**

369-381 President Ave, 61-65 Hotham Rd, 2-4 Bidrugal Ave Kirrawee NSW



Ground Floor Plan - Hotham House Retained			
Project number	MacHealth-06	SK 166	
Date	21/06/2021	Scale @ A1	Plot stamp:
Drawn by	NA	1 : 250	23/12/2021 11:36:43 AM
Checked by	SP	Version:	59

Y:\MacHealth\MACHEALTH-06\DP\previt\NG210625-MacHealth-06-R21-HothamHouseAlternat





HOTHAM Rd.

## Response to Submissions

### Consultant Team:

Traffic Engineer:  
BCA Consultant:  
Electrical Consultant:  
Hydraulic Consultant:  
Mechanical Services Engineer:  
Landscape Architect:  
Surveyor:

ML Traffic Engineers  
Blackett Maguire and Goldsmith  
Erbas and Associates  
Erbas and Associates  
Erbas and Associates  
Habit 8  
Dunlop Thorpe & Co.

- Ph. 02 8004 2434  
- Ph. 02 9211 7777  
- Ph. 02 9437 1022  
- Ph. 02 9437 1022  
- Ph. 02 9437 1022  
- Ph. 04 2520 6047  
- Ph. 02 9283 6677

### Amendment Issue:

No.	Description	Date
59	Response to Submissions	22/12/21

imagescape design studios

Imagescape design studios (ABN: 24 137 940 017) is an architect corporation registered under the provisions of the NSW Architects Act 2003. Nominated architects are Christine Kelly registration no. 6000 & Stephen Phillips registration no. 4608

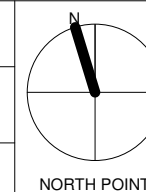


Macquarie HEALTH CORPORATION

President Private Hospital - Hotham House Option C

Macquarie Health Corporation

369-381 President Ave, 61-65  
Hotham Rd, 2-4 Bidurgal Ave  
Kirrawee NSW

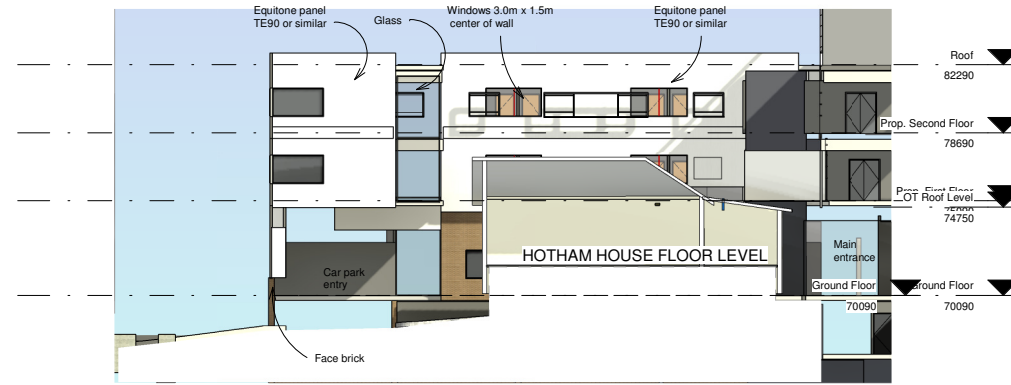


First Floor Plan - Hotham House Retained

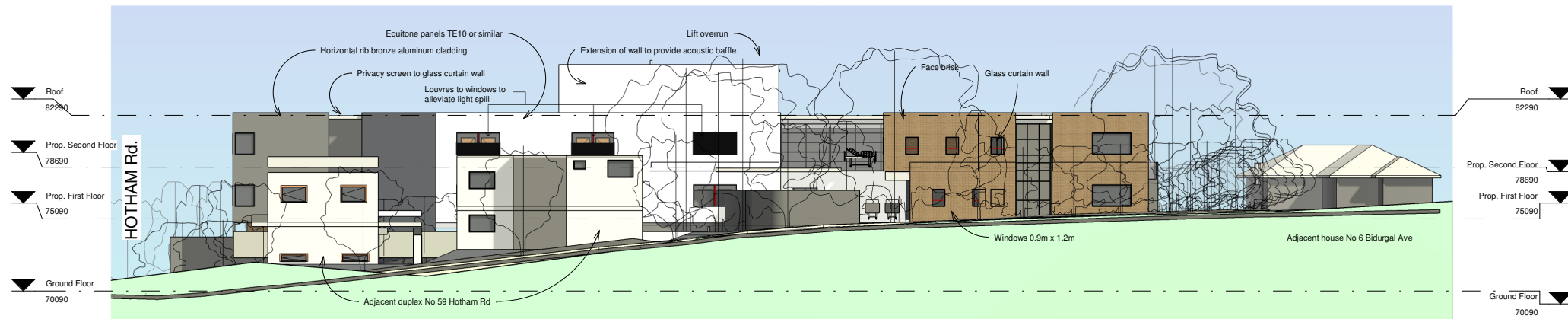
Project number	MacHealth-06	SK 167
Date	21/06/2021	
Drawn by	NA	Scale @ A1
Checked by	SP	Plot stamp: 23/12/2021 11:36:45 AM
		Version: 59

Y:\MacHealth\MACHEALTH-06\DP\previt\NG210625-MacHealth-06-R21-HothamHouseAlternat

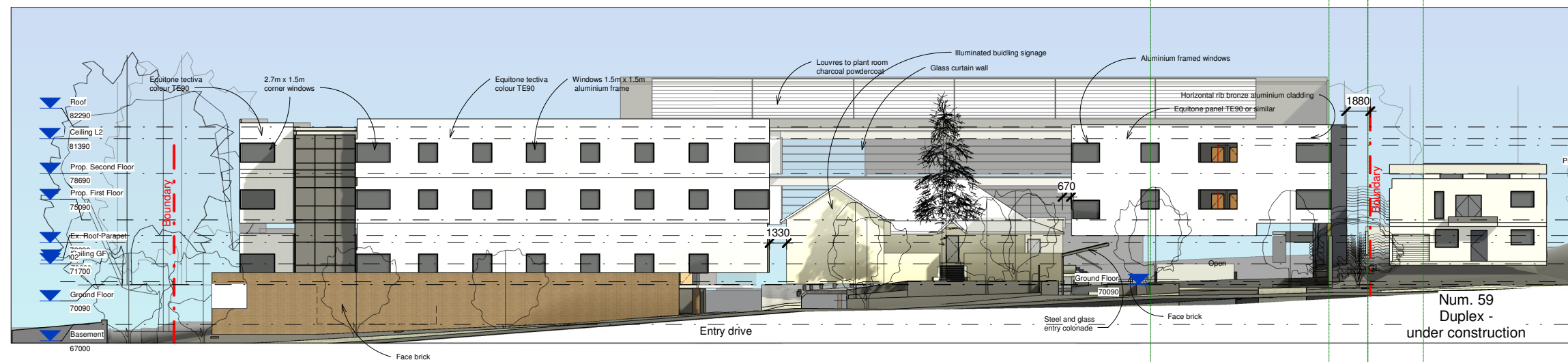




4 Entry looking South  
1 : 200



3 NORTH - Bidurgal Ave  
1 : 200

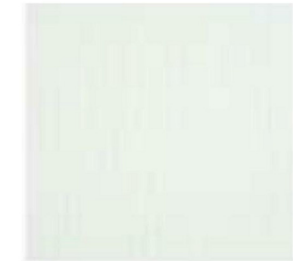


2 EAST Elevation - Hotham Rd  
1 : 200

## Schedule of Materials and Finishes



Face Brick



Equitone Facade Panel TE90 or similar



Equitone Facade Panel TE10 or similar



Bronze Anodized Horizontal Rib Awning Cladding Panel

## Response to Submissions

### Consultant Team:

Traffic Engineer:  
BCA Consultant:  
Electrical Consultant:  
Hydraulic Consultant:  
Mechanical Services Engineer:  
Landscape Architect:  
Surveyor:

ML Traffic Engineers  
Blackett Maguire and Goldsmith  
Erbas and Associates  
Erbas and Associates  
Erbas and Associates  
Habit 8  
Dunlop Thorpe & Co.

- Ph. 02 8004 2434  
- Ph. 02 9211 7777  
- Ph. 02 9437 1022  
- Ph. 02 9437 1022  
- Ph. 02 9437 1022  
- Ph. 04 2520 6047  
- Ph. 02 9283 6677

### Amendment Issue:

No.	Description	Date
58	Additional Information	08/06/2021
59	Response to Submissions	22/12/21

imagescape design studios

Imagescape design Studios (ABN: 24 137 940 017) is an architect corporation registered under the provisions of the NSW Architects Act 2003. Nominated architects are Christine Kelly registration no. 6000 & Stephen Phillips registration no. 4608

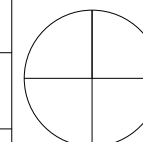


Macquarie HEALTH CORPORATION

President Private Hospital - Hotham House Option C

Macquarie Health Corporation

369-381 President Ave, 61-65  
Hotham Rd, 2-4 Bidurgal Ave  
Kirrawee NSW



NORTH POINT

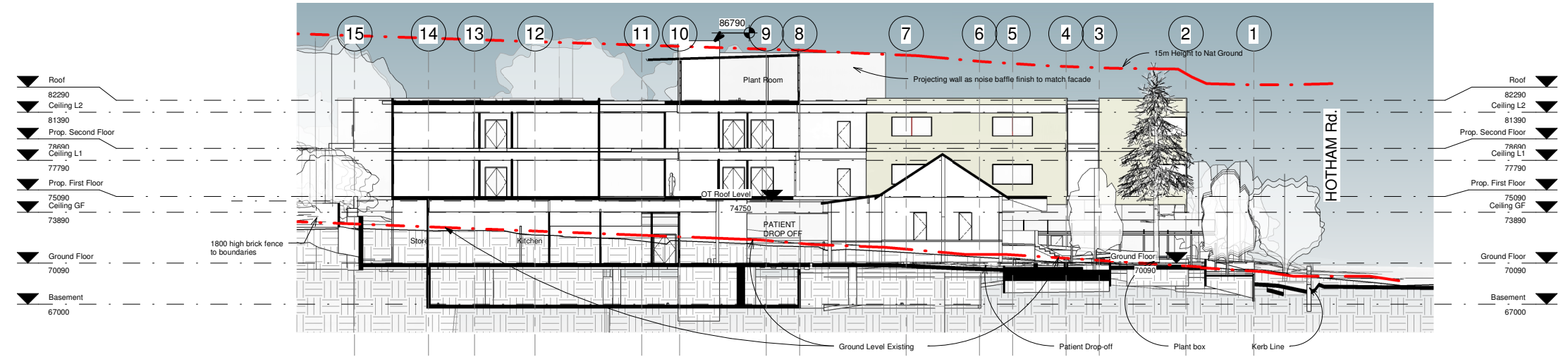
### Elevations

Project number	MacHealth-06	SK 300	
Date	21/06/2021		
Drawn by	NA	Scale @ A1	Plot stamp:
Checked by	SP	1 : 200	23/12/2021 11:37:24 AM
			Version: 59

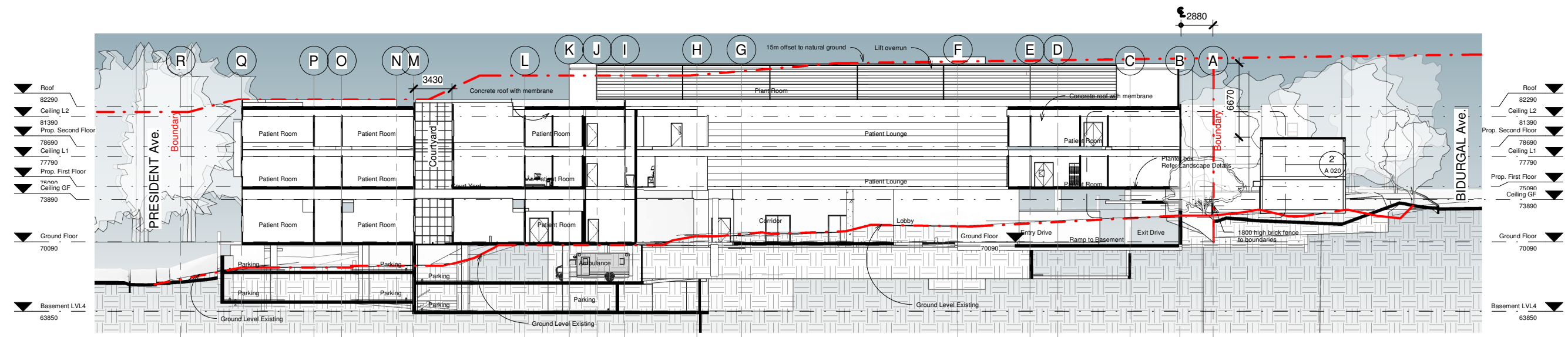
Y:\MacHealth\MACHEALTH-06\DP\previt\NG210625-MacHealth-06-R21-HothamHouseAlternat



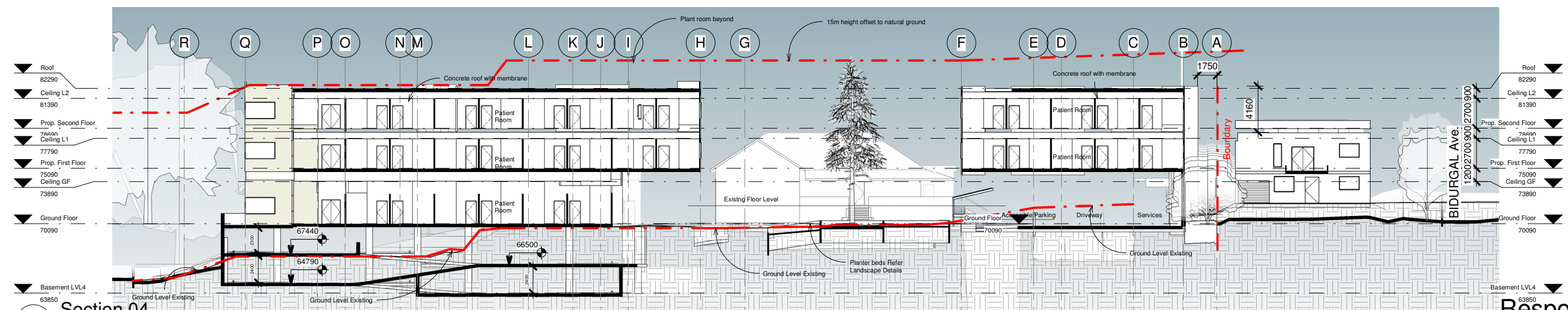
2 Section 02  
SK 401 1 : 200



3 Section 05  
SK 401 1 : 200



1 Section 04  
SK 401 1 : 200



Response to Submissions

Consultant Team:

Traffic Engineer:  
BCA Consultant:  
Electrical Consultant:  
Hydraulic Consultant:  
Mechanical Services Engineer:  
Landscape Architect:  
Surveyor:

ML Traffic Engineers  
Blackett Maguire and Goldsmith  
Erbas and Associates  
Erbas and Associates  
Habit 8  
Dunlop Thorpe & Co.

- Ph. 02 8004 2434  
- Ph. 02 9211 7777  
- Ph. 02 9437 1022  
- Ph. 02 9437 1022  
- Ph. 02 9437 1022  
- Ph. 04 2520 6047  
- Ph. 02 9283 6677

Amendment Issue:		
No.	Description	Date
59	Response to Submissions	22/12/21

**imagescape design studios**

10 10 55 Miller St, Pyrmont NSW 2009 G2 9518 8800 G2 8078 6877 studio@imagescape.com.au imagescape.com.au

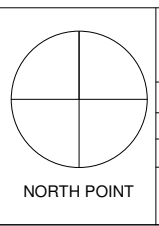
Imagescape design Studios (ABN: 24 137 940 017) is an architect corporation registered under the provisions of the NSW Architects Act 2003. Nominated architects are Christine Kelly registration no. 6000 & Stephen Phillips registration no. 4608

**Macquarie**  
HEALTH CORPORATION

President Private Hospital - Hotham  
House Option C

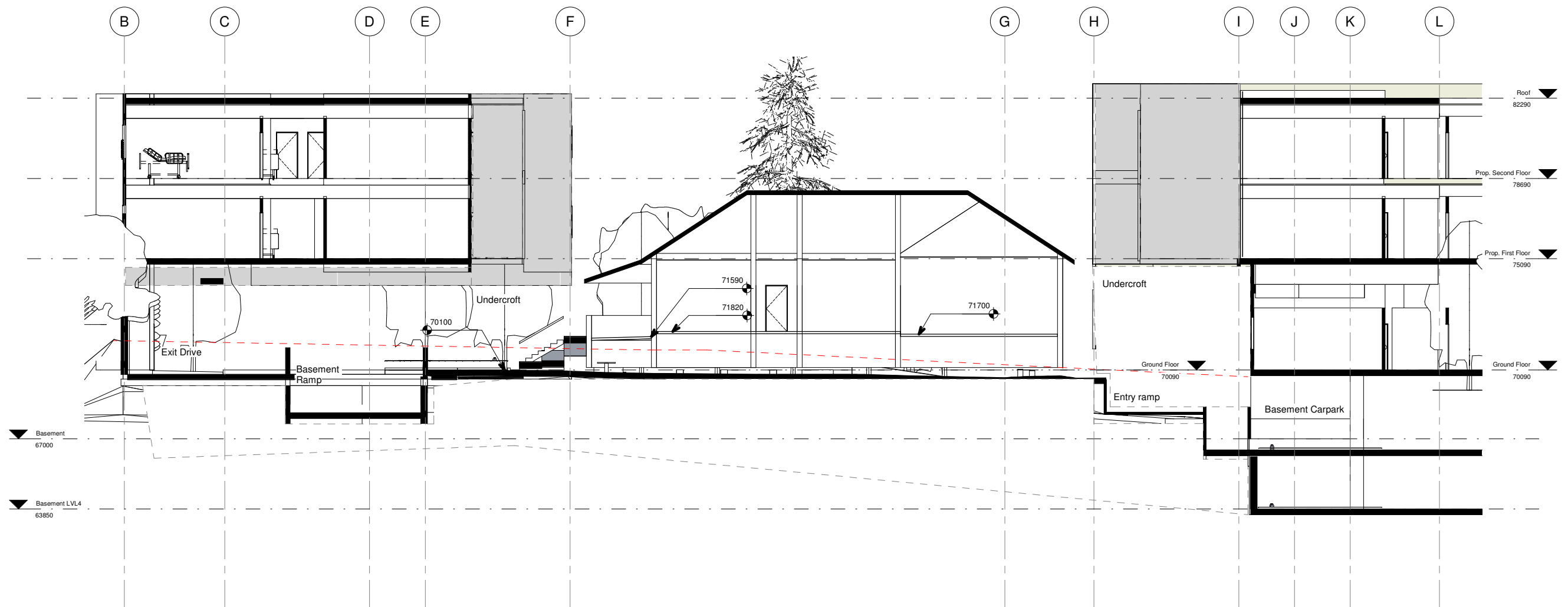
**Macquarie Health Corporation**

369-381 President Ave, 61-65  
Hotham Rd, 2-4 Bidurgal Ave  
Kirrawee NSW



Sections			
Project number: MacHealth-06		SK 401	
Date	21/06/2021	Scale @ A1	Plot stamp:
Drawn by	Author	1 : 200	23/12/2021 11:37:49 AM
Checked by	Checker	Version:	59





1 Section 138 - HH  
SK 402  
1 : 100

## Response to Submissions

### Consultant Team:

Traffic Engineer:  
BCA Consultant:  
Electrical Consultant:  
Hydraulic Consultant:  
Mechanical Services Engineer:  
Landscape Architect:  
Surveyor:

ML Traffic Engineers  
Blackett Maguire and Goldsmith  
Erbas and Associates  
Erbas and Associates  
Erbas and Associates  
Habit 8  
Dunlop Thorpe & Co.

- Ph. 02 8004 2434  
- Ph. 02 9211 7777  
- Ph. 02 9437 1022  
- Ph. 02 9437 1022  
- Ph. 02 9437 1022  
- Ph. 04 2520 6047  
- Ph. 02 9283 6677

### Amendment Issue:

No.	Description	Date
59	Response to Submissions	22/12/21

**imagescape design studios**

Imagescape design Studios (ABN: 24 137 940 017) is an architect corporation registered under the provisions of the NSW Architects Act 2003. Nominated architects are Christine Kelly registration no. 6000 & Stephen Phillips registration no. 4608.

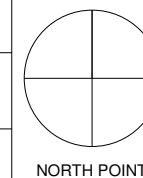


**Macquarie**  
HEALTH CORPORATION

President Private Hospital - Hotham  
House Option C

**Macquarie Health Corporation**

369-381 President Ave, 61-65  
Hotham Rd, 2-4 Bidural Ave  
Kirrawee NSW



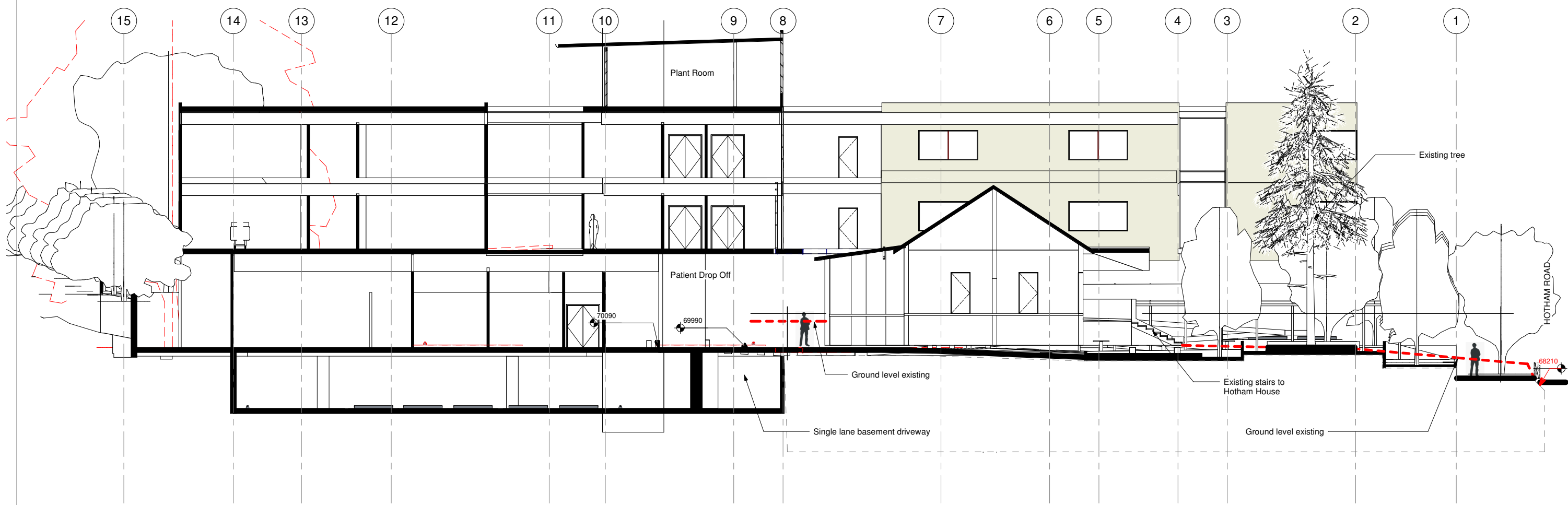
NORTH POINT

### Detail Section

Project number	MacHealth-06	SK 402	
Date	21/06/2021		
Drawn by	Author	Scale @ A1	Plot stamp:
Checked by	Checker	1 : 100	23/12/2021 11:38:07 AM
			Version: 59

Y:\MacHealth\MACHEALTH-06\DP\previt\NG210625-MacHealth-06-R21-HothamHouseAlternat





1  
SK 411

Section 131 - HH

1 : 100

## Response to Submissions

### Consultant Team:

Traffic Engineer:  
BCA Consultant:  
Electrical Consultant:  
Hydraulic Consultant:  
Mechanical Services Engineer:  
Landscape Architect:  
Surveyor:

ML Traffic Engineers  
Blackett Maguire and Goldsmith  
Erbas and Associates  
Erbas and Associates  
Erbas and Associates  
Habit 8  
Dunlop Thorpe & Co.

- Ph. 02 8004 2434  
- Ph. 02 9211 7777  
- Ph. 02 9437 1022  
- Ph. 02 9437 1022  
- Ph. 02 9437 1022  
- Ph. 04 2520 6047  
- Ph. 02 9283 6677

Amendment Issue:		
No.	Description	Date
59	Response to Submissions	22/12/21

**imagescape design studios**

55 Miller St, Pyrmont NSW 2009 G 02 9518 6800 G 02 8078 6677 studio@imagescape.com.au imagescape.com.au

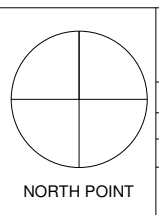
Imagescape design Studios (ABN: 24 137 940 017) is an architect corporation registered under the provisions of the NSW Architects Act 2003. Nominated architects are Christine Kelly registration no. 6000 & Stephen Phillips registration no. 4608



President Private Hospital - Hotham House Option C

**Macquarie Health Corporation**

369-381 President Ave, 61-65 Hotham Rd, 2-4 Bidural Ave Kirrawee NSW



Detail Section			
Project numberMacHealth-06		SK 411	
Date	21/06/2021		
Drawn by	Author	Scale @ A1	Plot stamp:
Checked by	Checker	1 : 100	23/12/2021 11:38:46 AM
		Version:	59