

2.17 Viewpoint 5 ALDINGTON ROAD EXISTING SITE

Existing Site

Legend

- Site Boundary
 - Visual Impact Viewpoint Locations
 - Direction of photo taken
- Co-ordinates : 33 50 30S 150 47 60E

Key Plan



2.18 Viewpoint 5 ALDINGTON ROAD VISUAL MONTAGE

1 Year Impact

Legend

- Site Boundary
- Visual Impact Viewpoint Locations
- Direction of photo taken
- Co-ordinates : 33 50 30S 150 47 60E

Key Plan



2.19 Viewpoint 5 ALDINGTON ROAD VISUAL MONTAGE

5 Year Impact

Legend

- Site Boundary
- Visual Impact Viewpoint Locations
- Direction of photo taken
- Co-ordinates : 33 50 30S 150 47 60E

Key Plan



2.20 Viewpoint 5 ALDINGTON ROAD VISUAL MONTAGE

10 Year Impact

Viewpoint 05 - The view faces along the southern aspect of Aldington Road and represents a view of a public receiver travelling in a vehicle. The view of the proposed development is situated towards the upper centre of the of the image and represent the mid to southern buildings along the property boundary that will interface with the street.

The tree and shrub planting towards the left-hand aspect of the image represent the planting to the boundary of the proposed development after 10 years of projected growth. The recommended planting largely obscures the proposed buildings set back within the property but does not screen the buildings shown towards the centre horizon line. With the general location scoring low in sensitivity, and a moderate to low magnitude value, the assessment of this view is of a moderate-low value impact.

Legend

- Site Boundary
 - Visual Impact Viewpoint Locations
 - Direction of photo taken
- Co-ordinates : 33 50 30S 150 47 60E

Key Plan



2.21 Viewpoint 6 ALDINGTON ROAD EXISTING SITE

Existing Site

Legend

- Site Boundary
- Visual Impact Viewpoint Locations
- Direction of photo taken
- Co-ordinates : 33 50 19S 150 47 57E

Key Plan



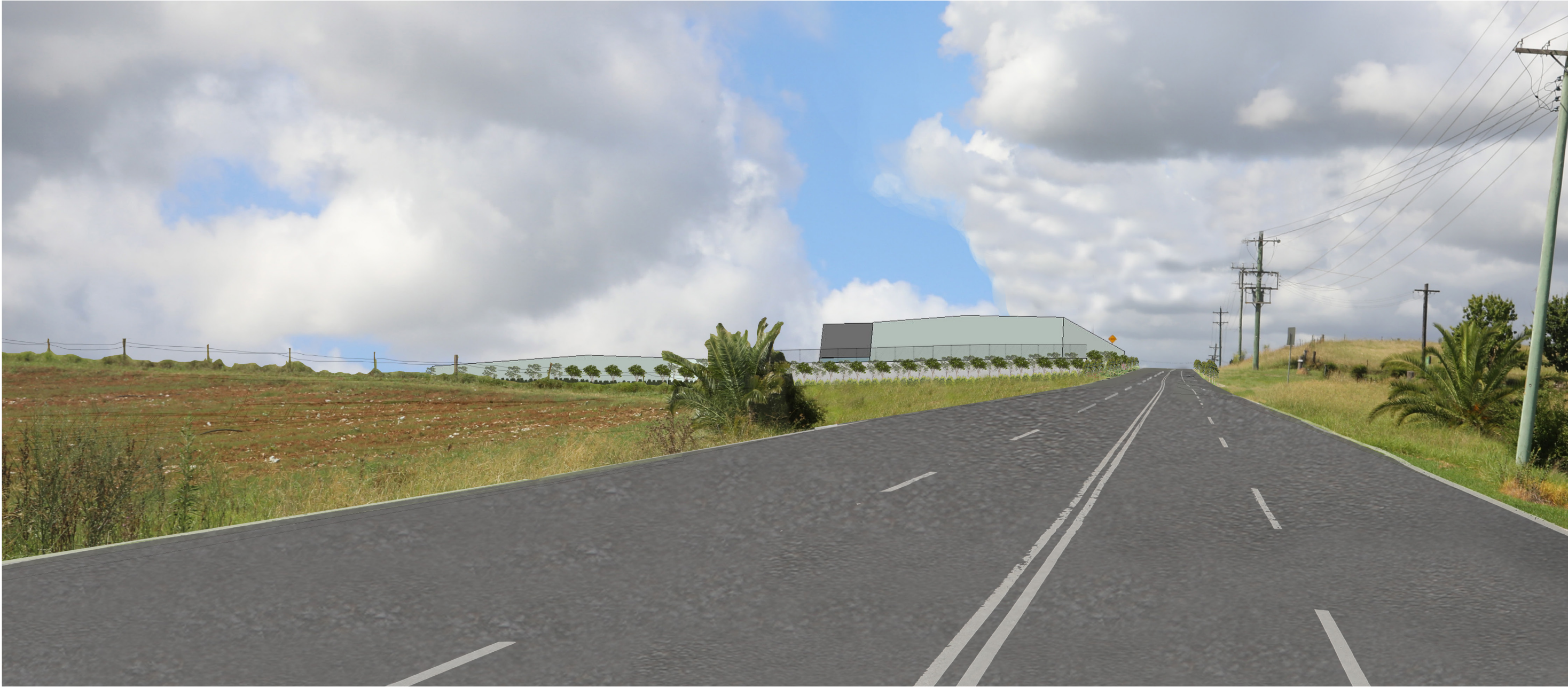
2.22 Viewpoint 6 ALDINGTON ROAD VISUAL MONTAGE

1 Year Impact

Legend

- Site Boundary
- Visual Impact Viewpoint Locations
- Direction of photo taken
- Co-ordinates : 33 50 19S 150 47 57E

Key Plan



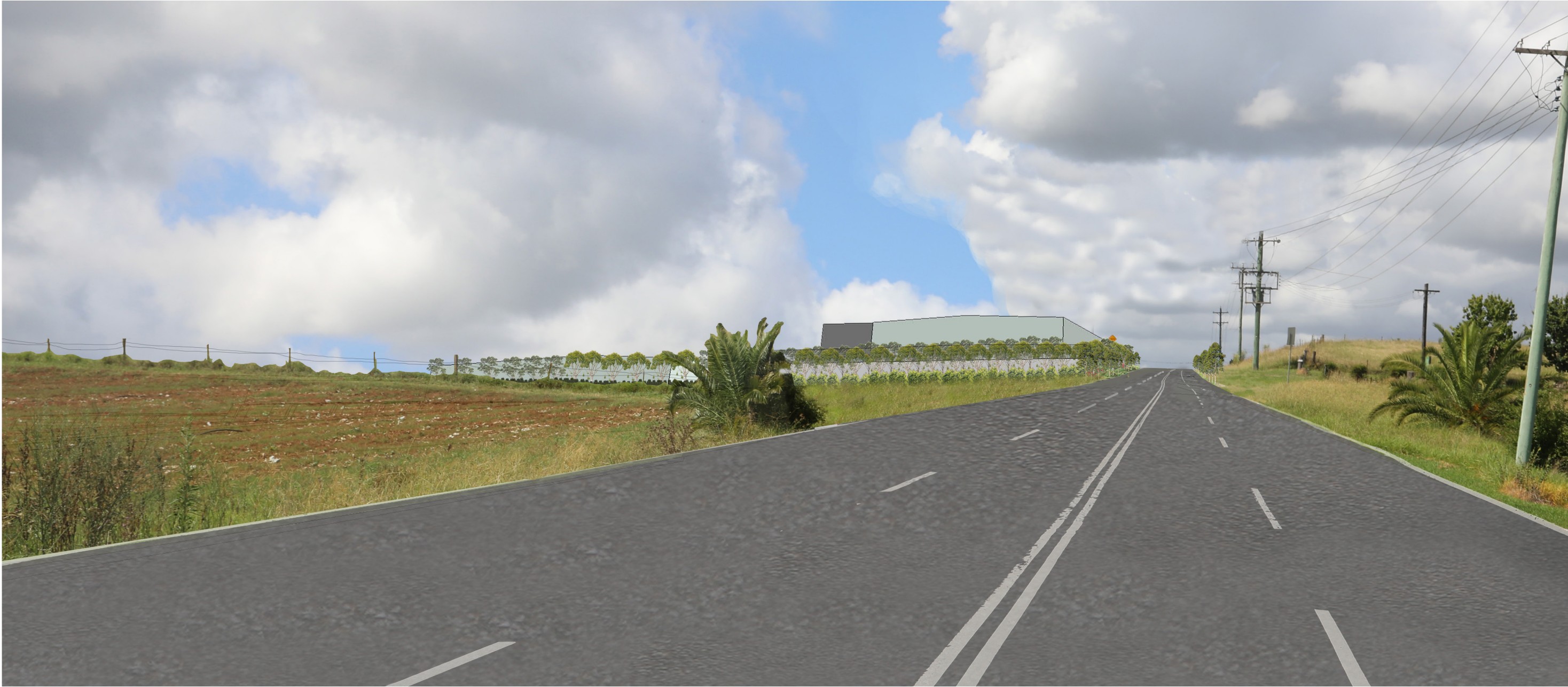
2.23 Viewpoint 6 ALDINGTON ROAD VISUAL MONTAGE

5 Year Impact

Legend

- Site Boundary
- Visual Impact Viewpoint Locations
- Direction of photo taken
- Co-ordinates : 33 50 19S 150 47 57E

Key Plan



2.24 Viewpoint 6 ALDINGTON ROAD VISUAL MONTAGE

10 Year Impact

Viewpoint 06 - The view faces along the southern aspect of Aldington Road and represents a view of a public receiver travelling in a vehicle. The view of the proposed development is situated towards the mid left-hand aspect of the photo, finishing within the centre of the image interfacing with Aldington Road. The fence line shown represents the southern boundary of the proposed development.

The tree and shrub planting along the proposal's property boundary off Aldington Road, as well as the trees between the proposed buildings represent the planting after 10 years of projected growth.

The assessment of this view is of a moderate-low value impact. While the scale of the proposal within this viewpoint has been attributed with a moderate magnitude, the impact of this has been diminished by the adjacent

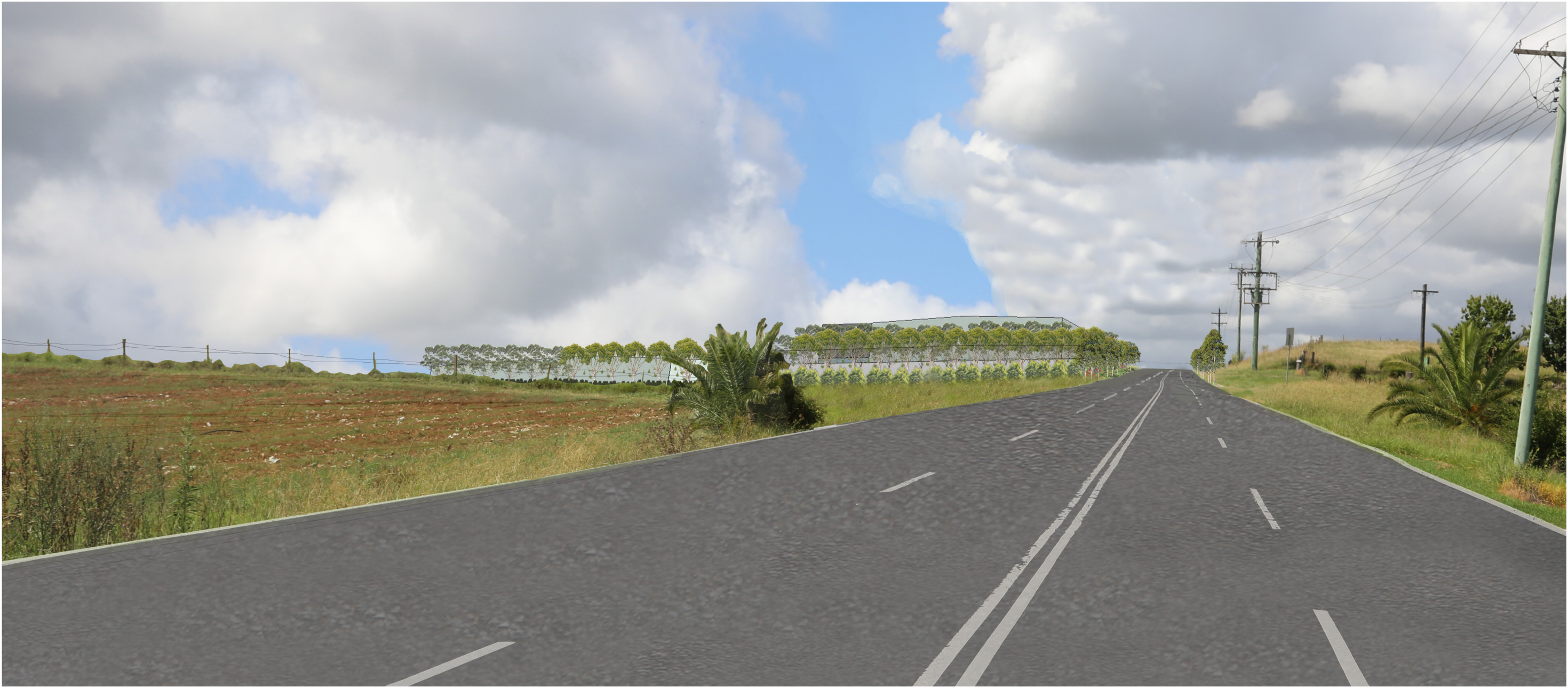
modified agricultural landscape in the left-hand midground as well as the partial screening by proposed vegetation reducing impact on sensitivity.

The recommended planting largely obscures the proposed buildings set back within the property but does not screen the buildings shown towards the centre horizon. With the general location scoring low in sensitivity and a magnitude value of moderate to low, the assessment of this view is of a moderate-low value impact.

Legend

- Site Boundary
 - Visual Impact Viewpoint Locations
 - Direction of photo taken
- Co-ordinates : 33 50 19S 150 47 57E

Key Plan



2.25 Viewpoint 7 ALDINGTON ROAD EXISTING SITE

Existing Site

Legend

- Site Boundary
 - Visual Impact Viewpoint Locations
 - Direction of photo taken
- Co-ordinates : 33 50 10S 150 47 56E

Key Plan

