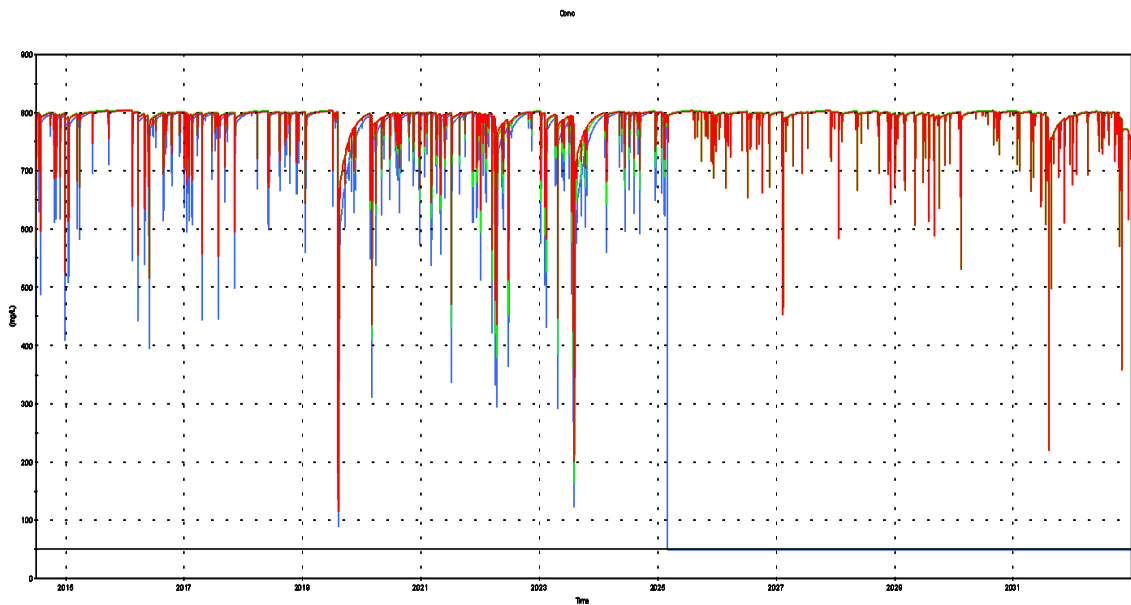
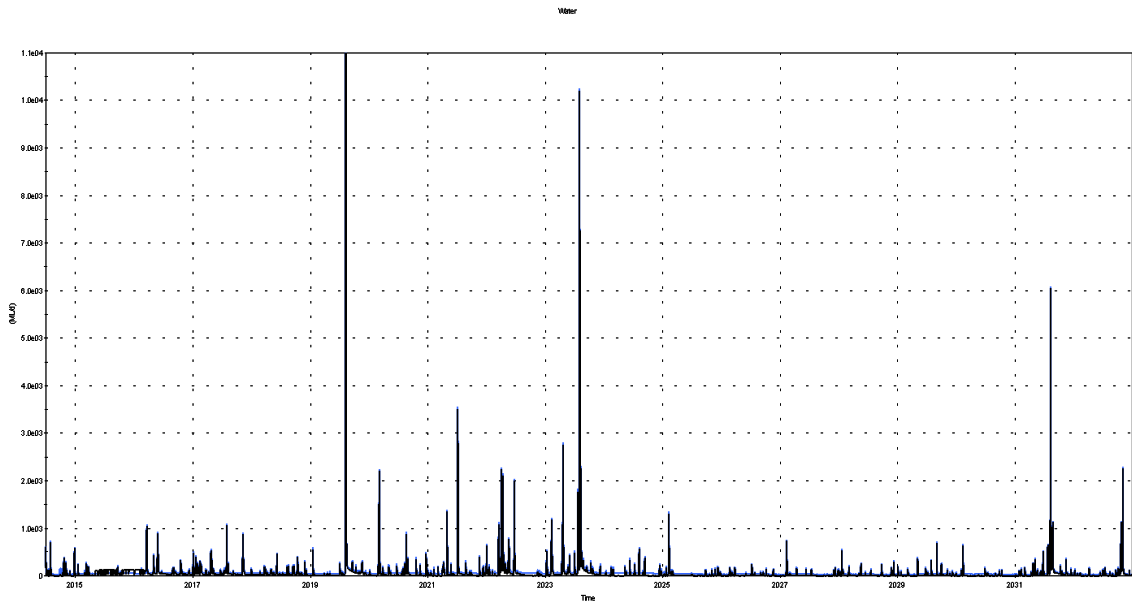


#014: Sawyers Swamp Creek below Springvale LDP009 (Flow, ML/d)

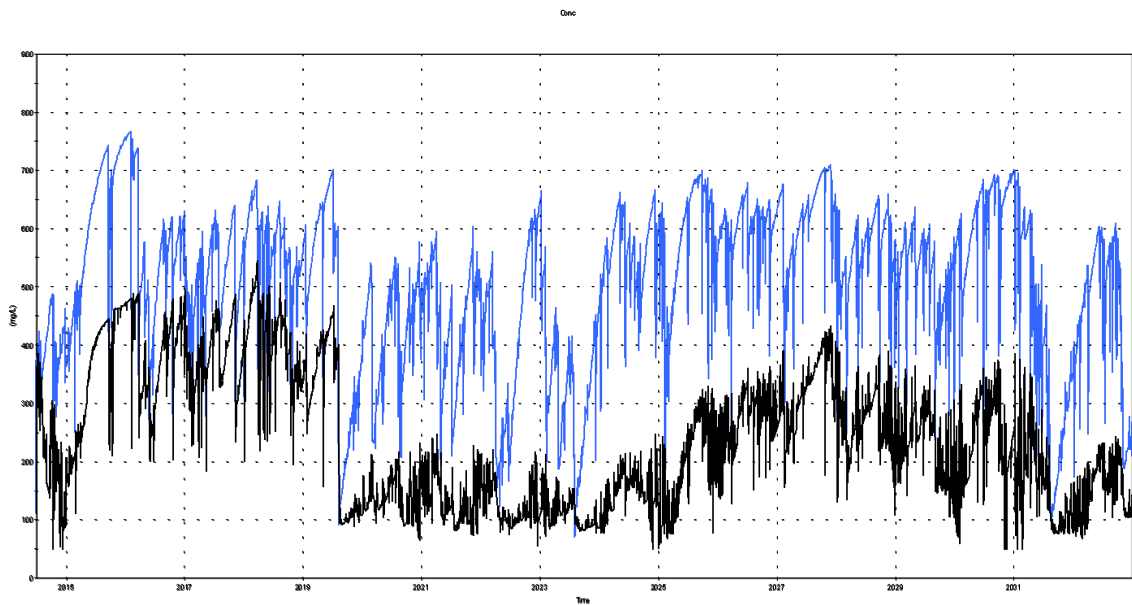


#014: Sawyers Swamp Creek below Springvale LDP009 (Salinity, mg/L)

LEGEND:  
 — WS1  
 — WS2  
 — WS3  
 — Null Case

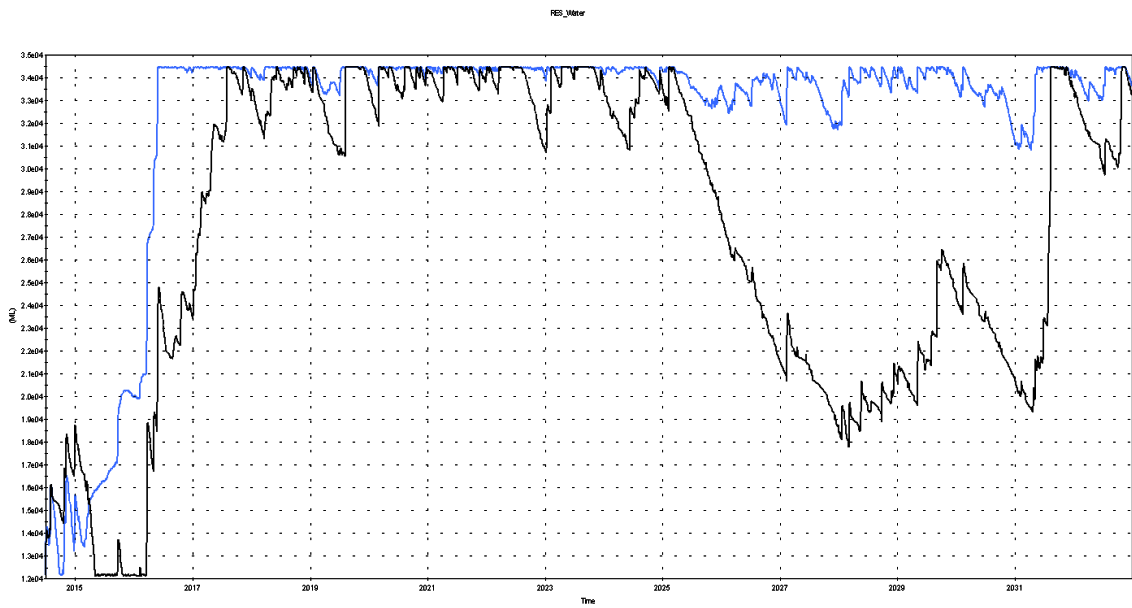


#154: Coxs River above Lake Lyell (Flow, ML/d; location of NSW Office of Water Gauge 212058)

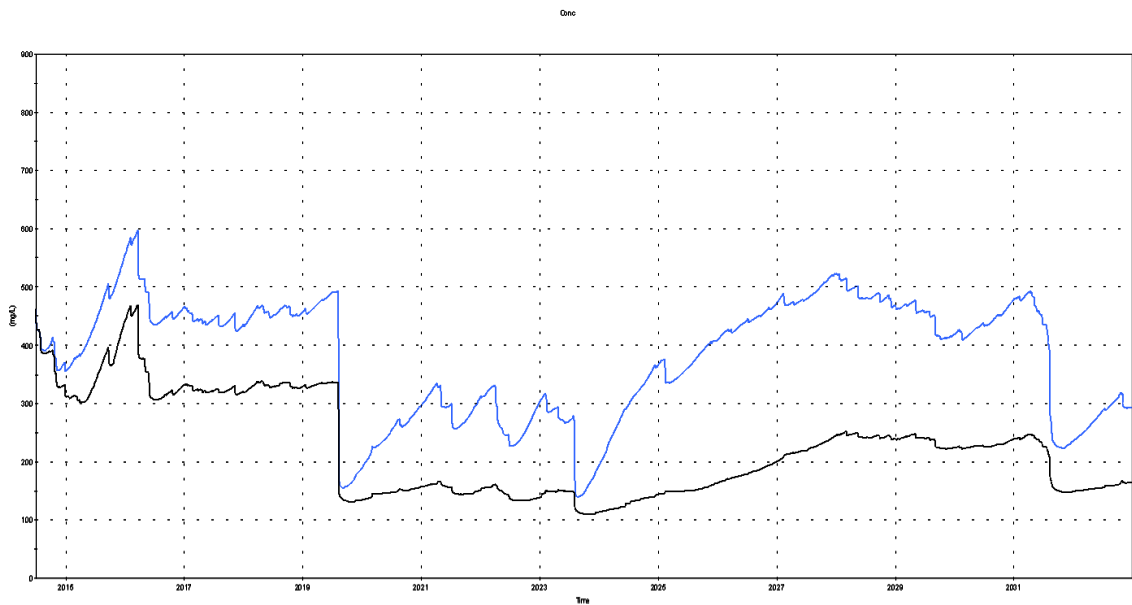


#035: Coxs River above Lake Lyell (Salinity, mg/L; at Energy Australia Monitoring Location, COX5)

LEGEND:  
— WS1, WS2a & WS2b  
 — Null Case

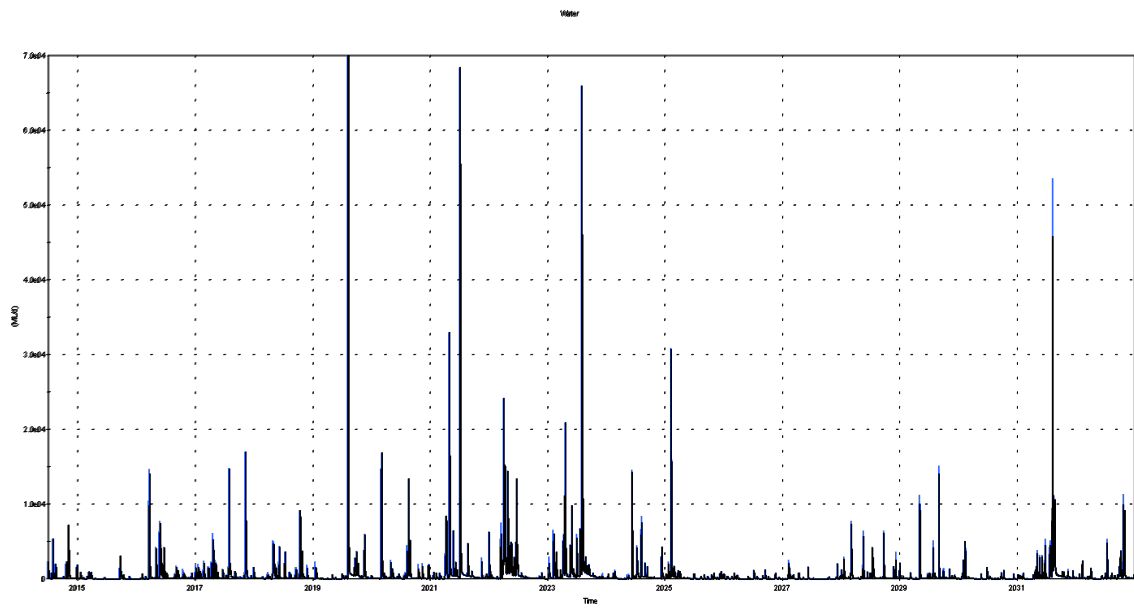


#174: Lake Lyell (Volume, ML)

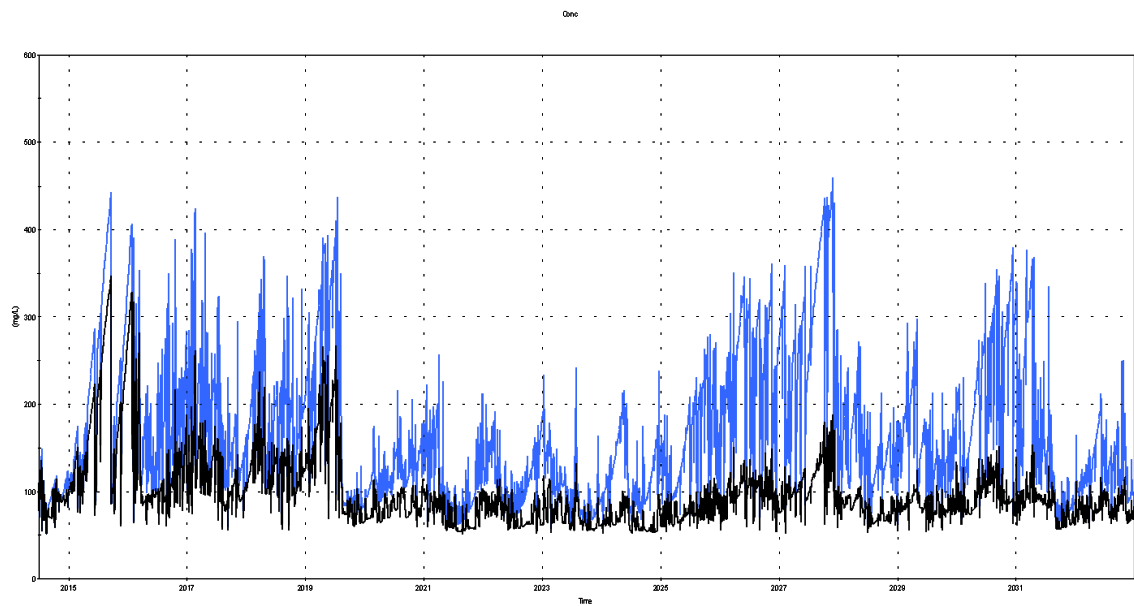


#174: Lake Lyell (Salinity, mg/L)

LEGEND:  
 — WS1, WS2a & WS2b  
 — Null Case

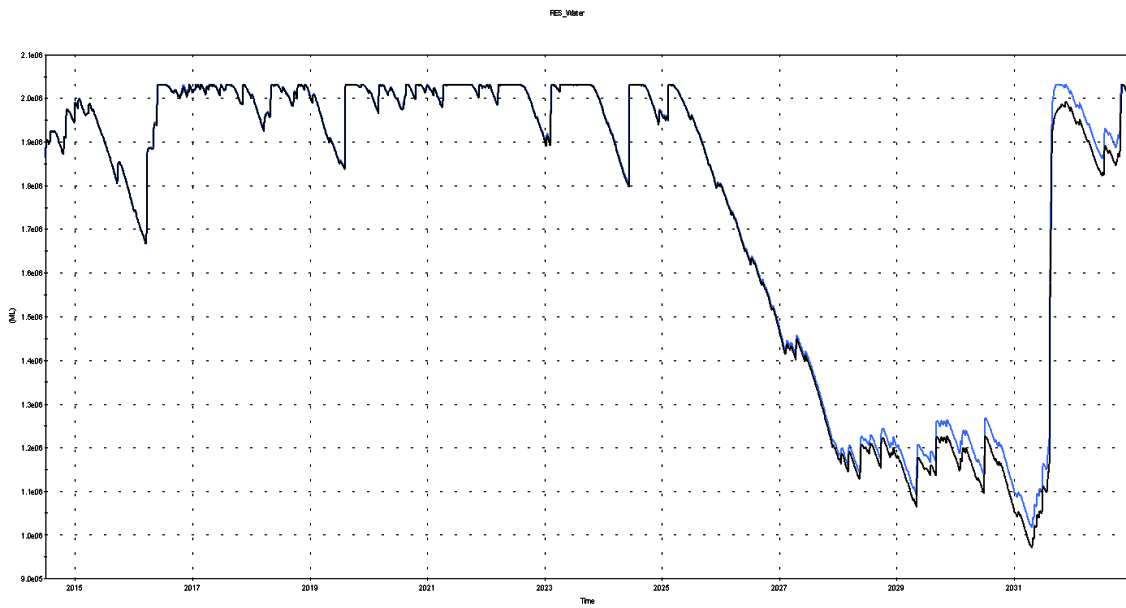


#225: Coxs River immediately above Lake Burragorang (Flow, ML/d)

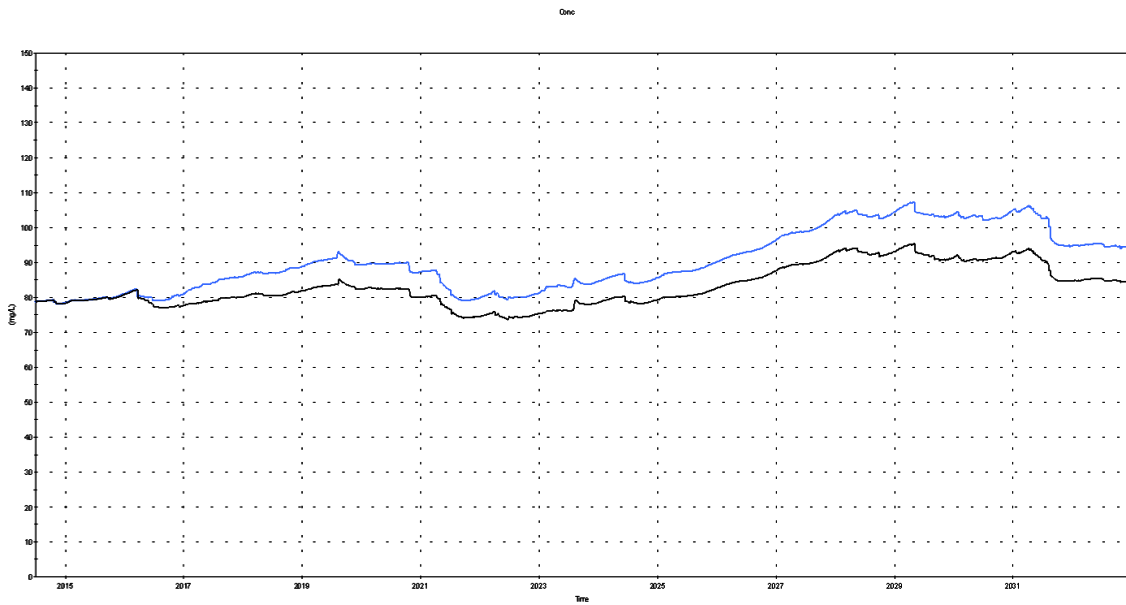


#225: Coxs River immediately above Lake Burragorang (Salinity, mg/L)

LEGEND:  
— WS1, WS2a & WS2b  
 — Null Case



#280: Lake Burragorang (Volume, ML)



#074: Lake Burragorang (Salinity, mg/L)

LEGEND:  
 — WS1, WS2a & WS2b  
 — Null Case