



**SCEGGS DARLINGHURST**

Landscape Masterplan

Rev D  
September 2019  
18549  
DRAFT

context



# INTRODUCTION

The SSD DA seeks development consent for:

1. Concept approval of the 2040 Masterplan for the SCEGGS Darlinghurst campus, including:

- Conceptual approval for the demolition of the following buildings:
  - o Wilkinson House fronting Forbes Street
  - o Library and science building fronting Bourke Street
  - o The old gym building at the northern end of Thomson Street
  - o Part of the additions to the Barham Building fronting Forbes Street
- Building envelopes and land use for the following new buildings:
  - o Four-storey school building at the corner of Forbes Street and St Peters Street for general school purposes
  - o Maximum six storey multi-purpose building fronting Bourke Street for general school purposes and potential centre-based child care facility
  - o On-site vehicular drop-off with associated car parking from Bourke Street within the multi-purpose building
  - o Maximum four-storey administration building fronting Forbes Street for general school purposes

- Conservation works to the existing Barham Building within the school premises to remove non-original building fabric and use for general school purposes

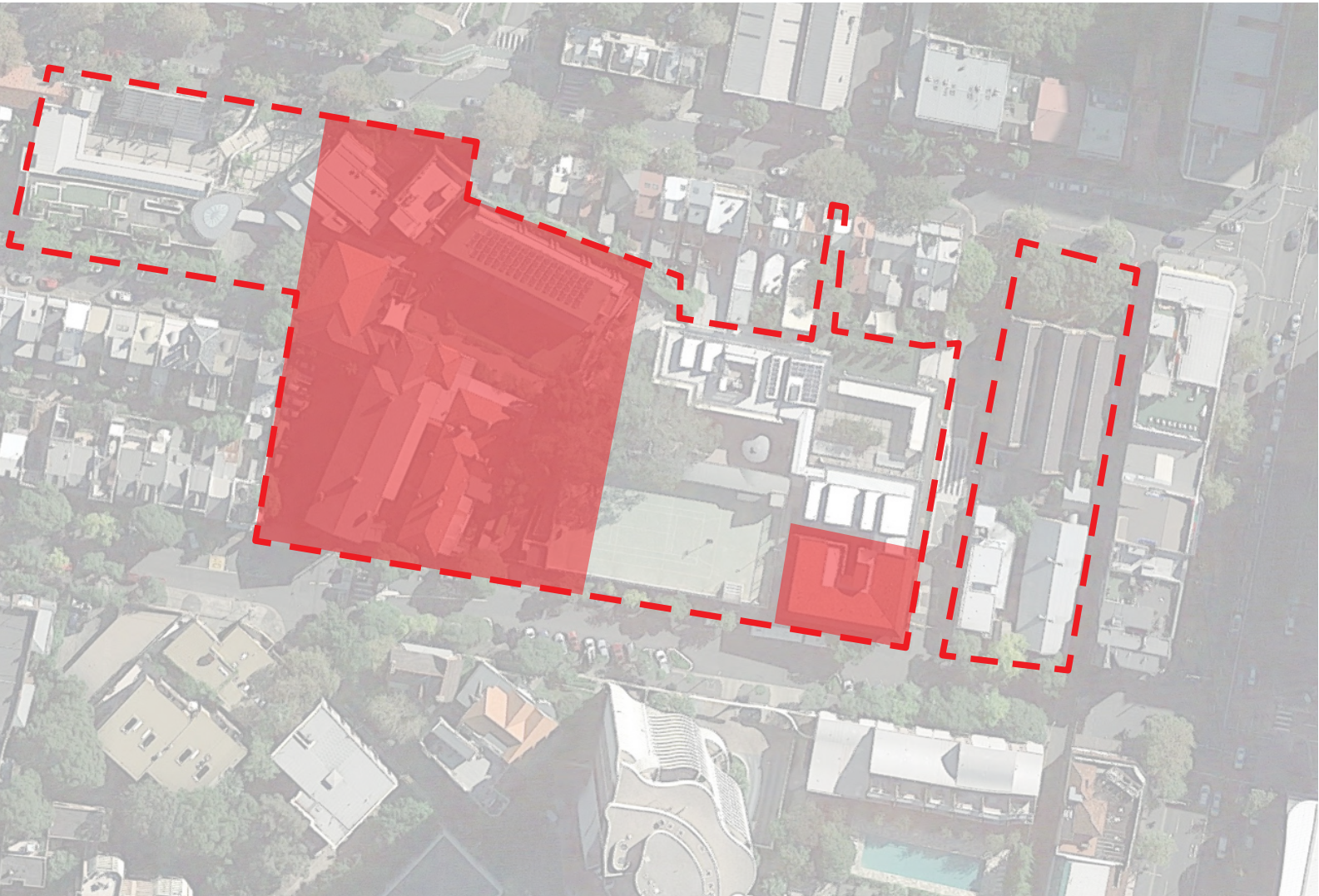
2. Detailed consent for the demolition of Wilkinson House, basement excavation, and construction of a new four storey building (new Wilkinson House) comprising approximately 1,507sqm of gross floor area (GFA) and a maximum height of 15m for the purposes of new teaching and education spaces.

SCEGGS Darlinghurst was founded in 1895 as the Sydney Church of England Girls Grammar School, with the current campus established in 1901.

The campus is bounded by Bourke Street, St Peters Street, St Peters Lane, Forbes Street and Thomson Street and shares boundaries with residential properties to the North and West.

Architectural styles across the campus range from the original Barham building to recently completed works including the Joan Freeman Science and Technology Centre.

The purpose of this landscape masterplan is to provide an overall vision for the campus - unifying the various character areas while remaining sympathetic to the rich heritage of the site, providing a cohesive design language and palette of materials, and building on the School's commitment to quality public domain and outdoor spaces shown in St Peters Street.

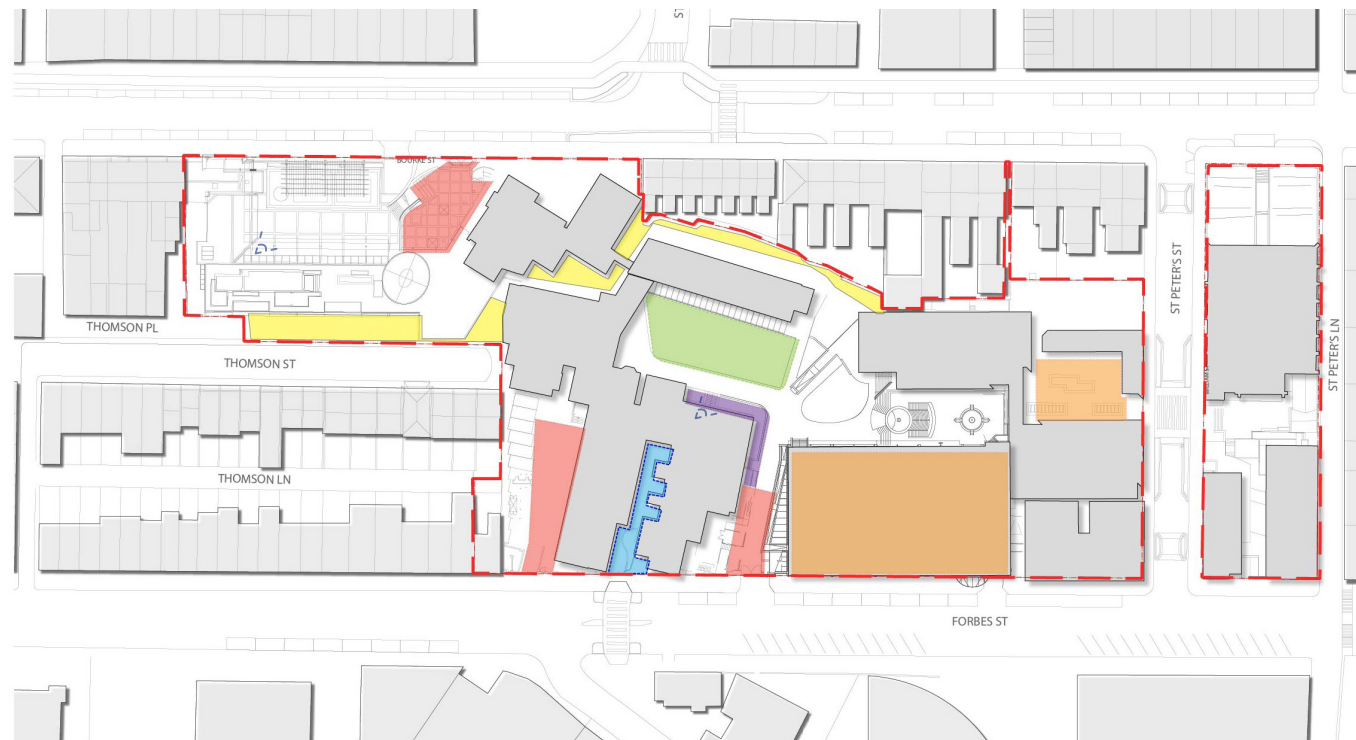


SCEGGS DARLINGHURST CAMPUS EXTENT



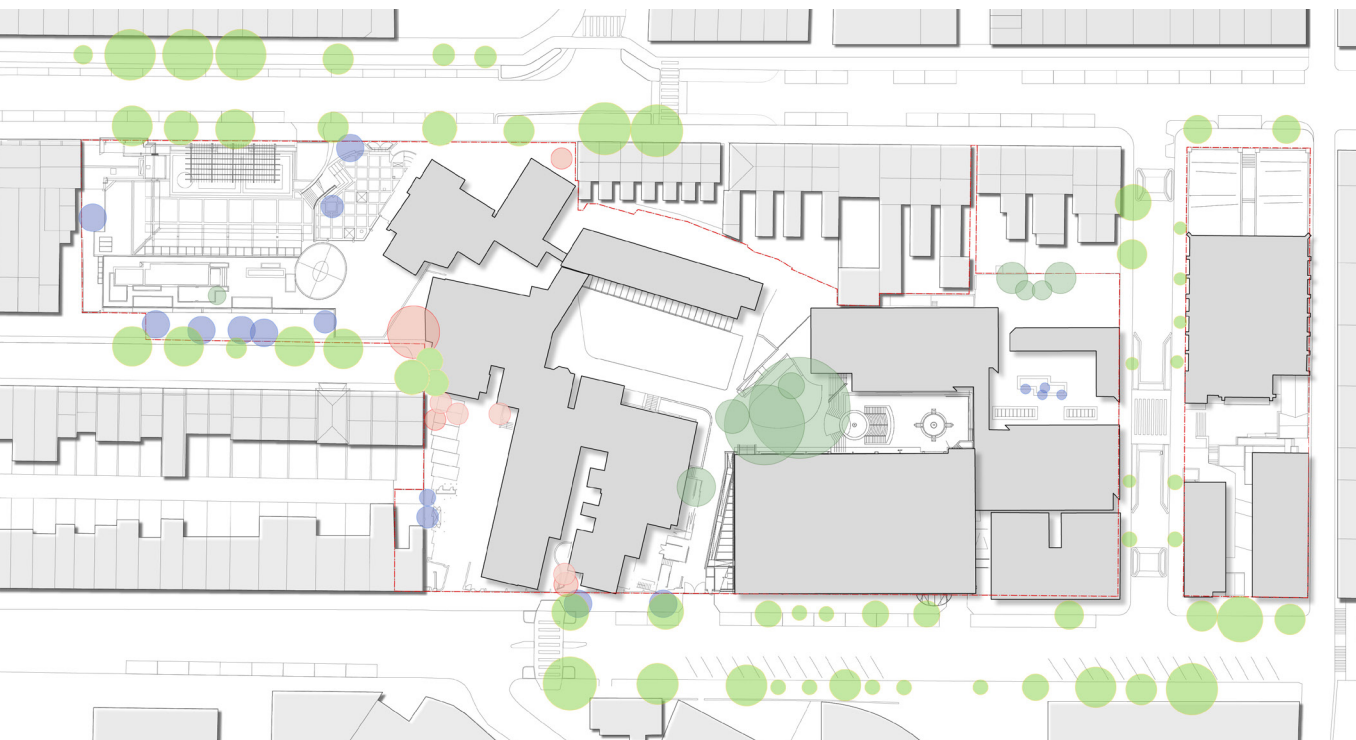
ANALYSIS

Existing Site Character



- LEGEND
- Underutilised Entry Spaces
  - Disconnected Formal Entry
  - Heritage Significant Curtilage
  - Central Lawn Space
  - Open Active Zones
  - Cliff Edge
  - Existing District Views

Existing Trees and Vegetation



\*Refer AIA Report by Bluegum Tree Care and Consultancy (November 2018)

- LEGEND
- Existing Street Trees
  - Existing Trees On Site
  - Existing Significant Trees On Site
  - Trees to be removed
  - Green space



Existing carpark / service Area



Centenary Sports Hall - rooftop court



Central lawn



Existing understorey planting



Existing mature Kauri Pine

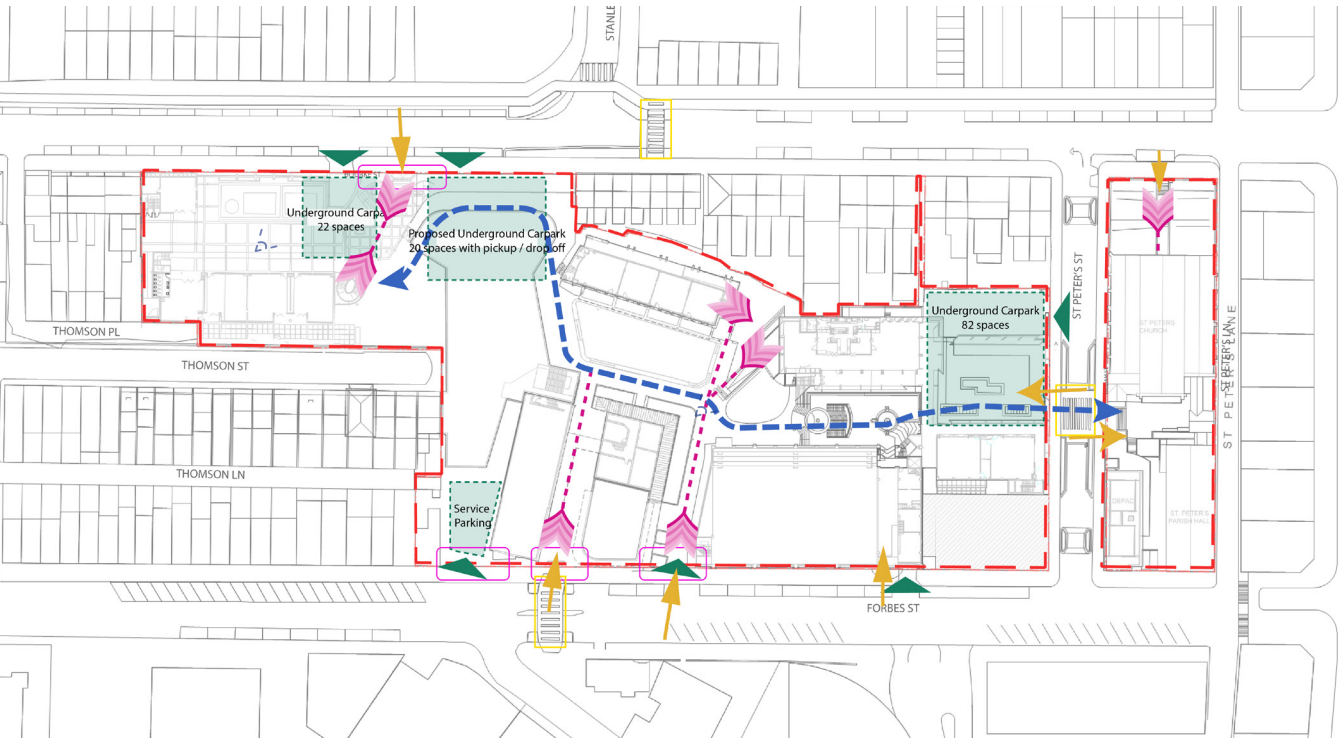


Existing mature Fig



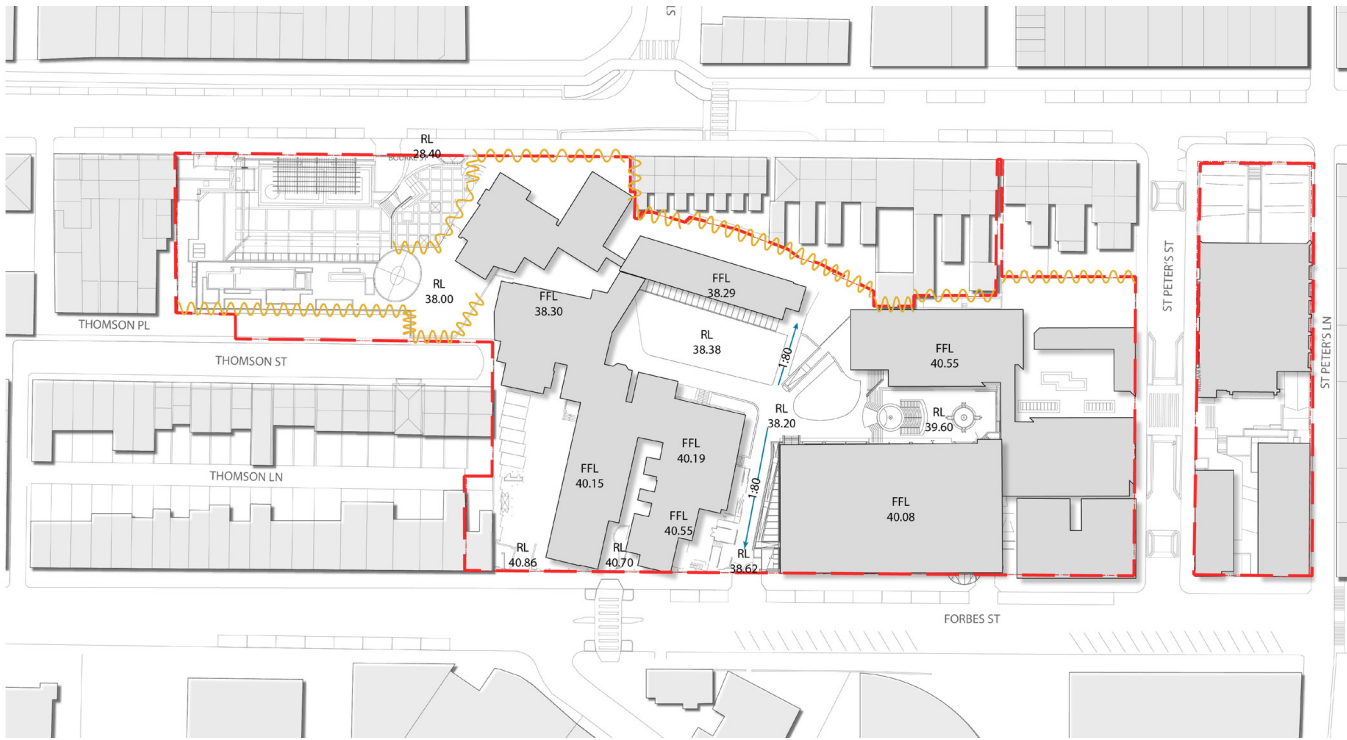
ANALYSIS

Access and Circulation



- LEGEND
- Primary Pedestrian Movements
  - Secondary Pedestrian Movements
  - Vehicle Entries
  - Pedestrian Entries
  - Gated Entry Portals

Site Topography



- LEGEND
- Key Existing External Levels
  - Proposed Building Floor Levels
  - Sandstone Cliff Face



Existing formal entry



Existing side gate - under-utilised entry



Through-site access



Existing sandstone cliff face



Existing ramp arrangement



Existing level change across site



# DESIGN PRINCIPLES

The following design principles capture the main urban design qualities that are proposed to achieve the objectives for the project. They form the basis for thinking about and evaluating the design and for deriving the criteria to judge the quality of the SCEGGS campus design.



## PROVIDE A CONSISTENCY THROUGH USE OF MATERIALS

- Unification of character across the campus through consistent suite of materials and finishes.
- Build on SCEGGS commitment to high quality public domain and outdoor spaces as demonstrated in St Peters Street
- Palate of materials and finishes to reflect and unify the range of architectural styles across the campus.



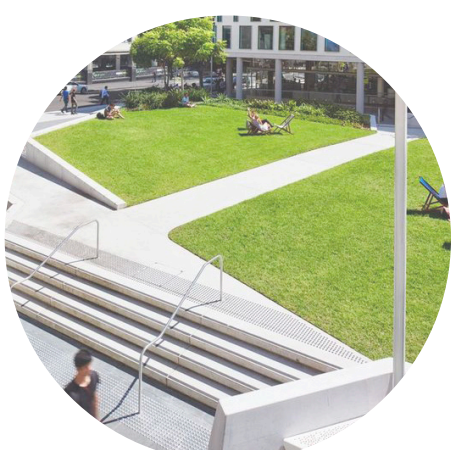
## IMPROVE STREET ADDRESS AND SENSE OF ARRIVAL

- Formalise main/admin entry from Forbes St
- Enhance arrival experience for students entering the school from Forbes St, Bourke St and St Peters St
- Enhance arrival experience for primary school students entering the school from Bourke St.



## ENHANCE HERITAGE CHARACTER

- Enhance the heritage character of the school, including existing buildings, spaces and existing mature trees
- Materiality is to reflect the juxtaposed architectural character (existing and proposed)



## MAXIMISE USABLE OUTDOOR SPACE

- Maximise usable outdoor space across the school site, with particular consideration given to how the central lawn and podium areas will function as the main passive outdoor spaces for the school
- Provide a number of passive spaces throughout the campus for students to utilise in different ways for outdoor learning.

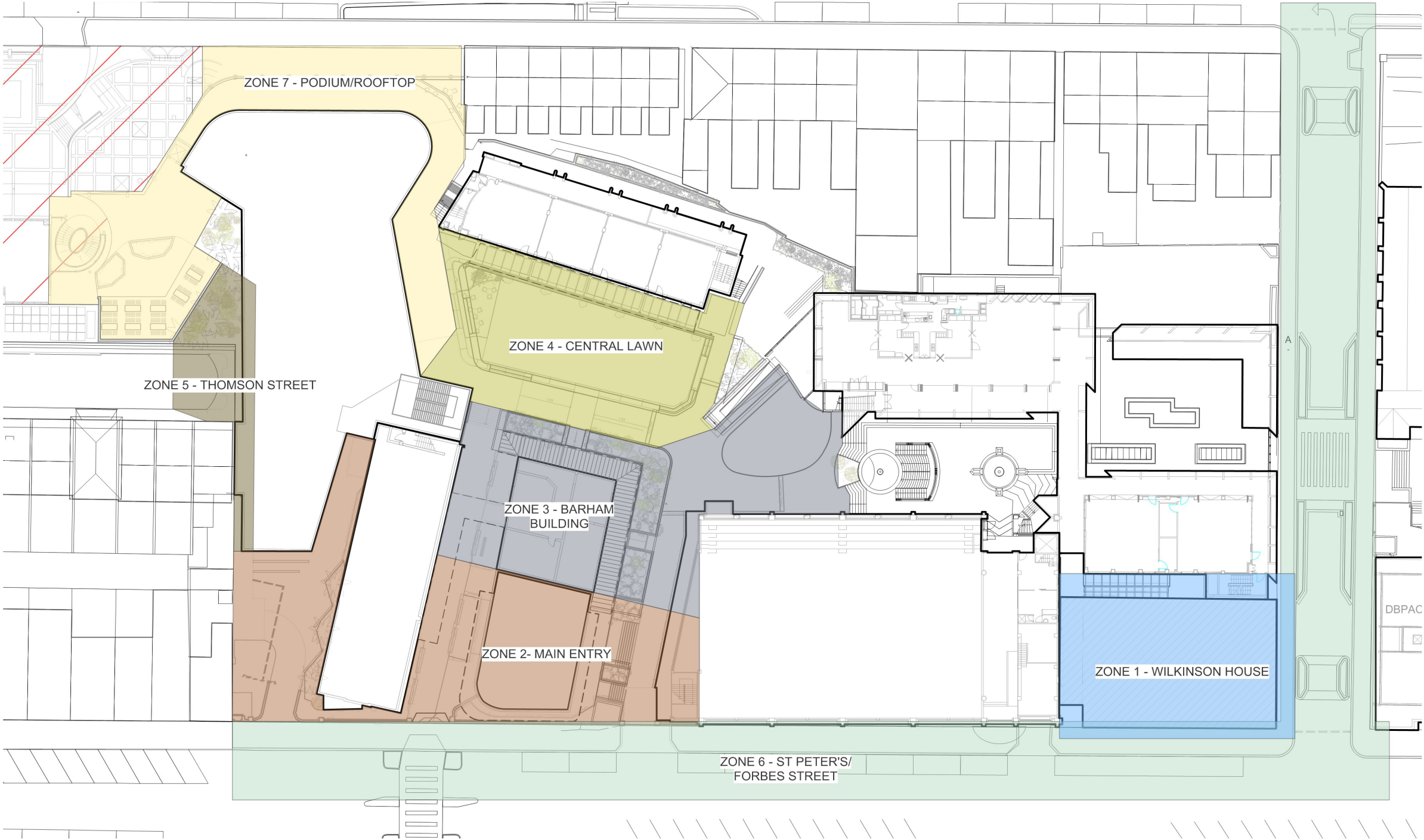


## MAINTAIN AND ENHANCE EXISTING MATURE TREE CANOPY

- Existing trees reinforce a distinctive character and identity.
- Reinforce the park/campus theme to the school.
- Develop strong landscape links through enhancing the character of additional tree planting.

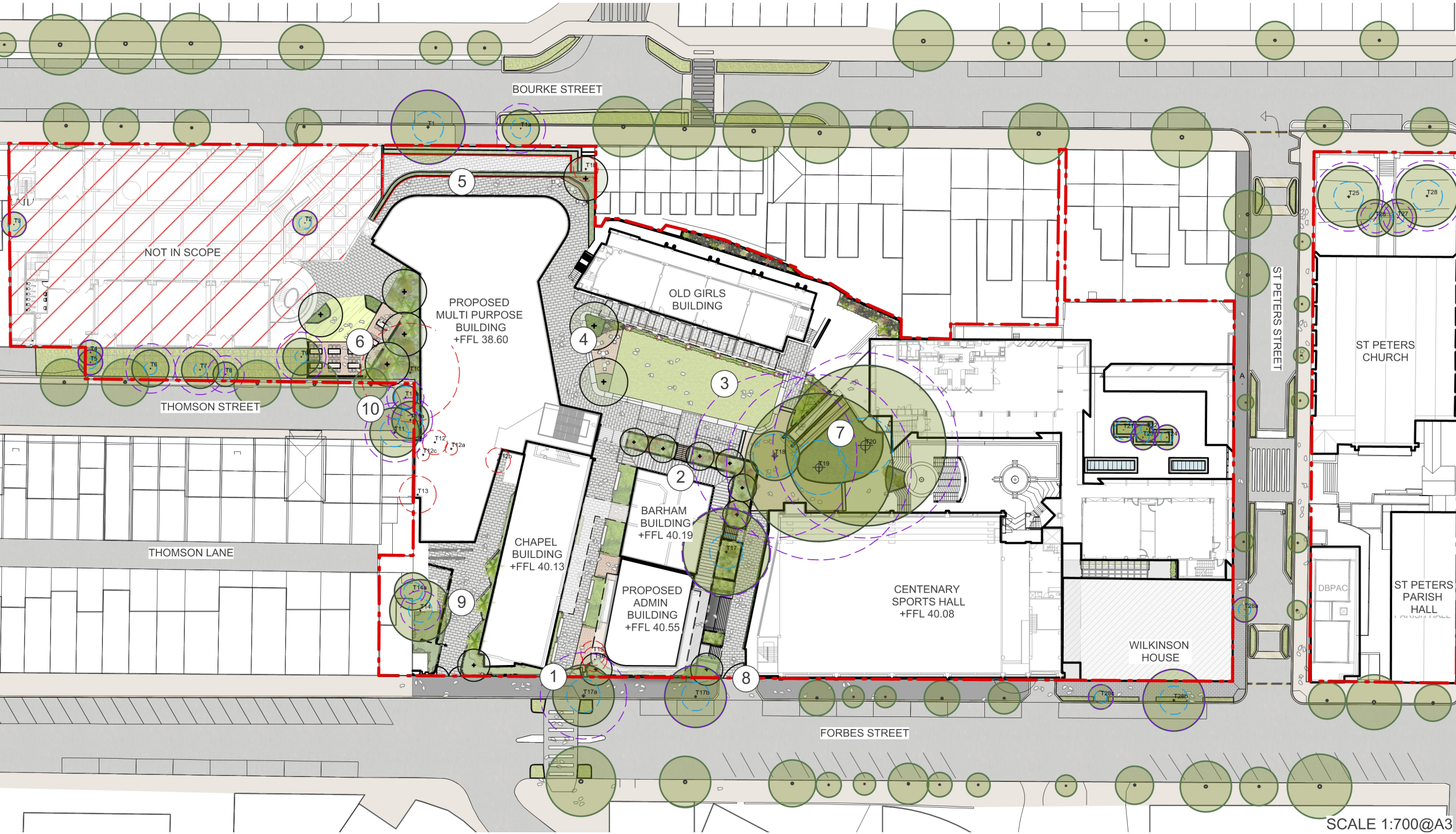


LANDSCAPE CHARACTER ZONES





LANDSCAPE MASTERPLAN



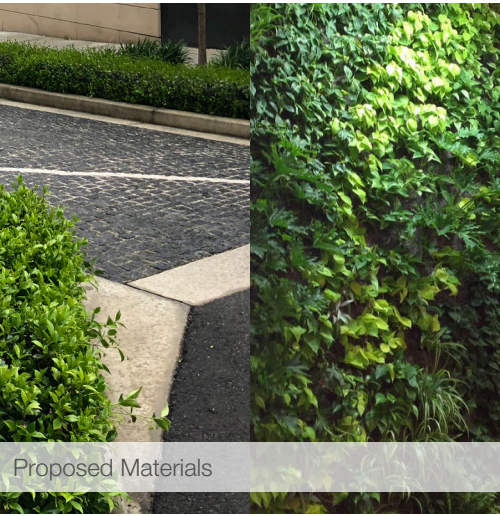
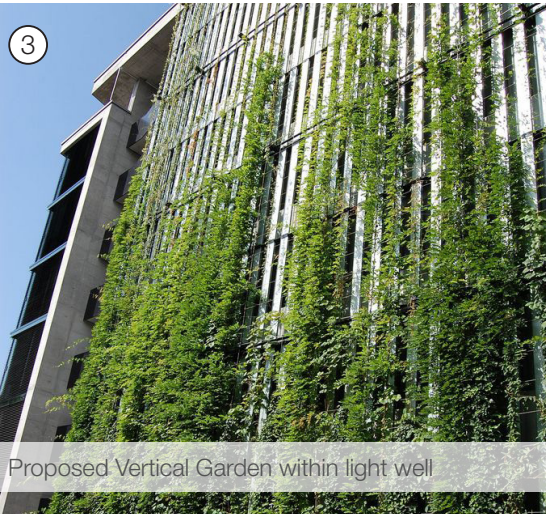
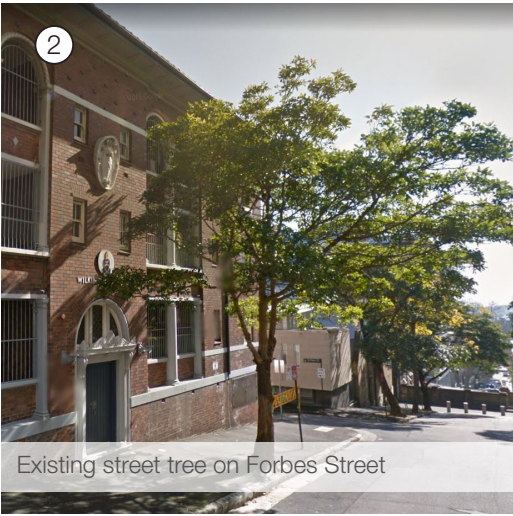
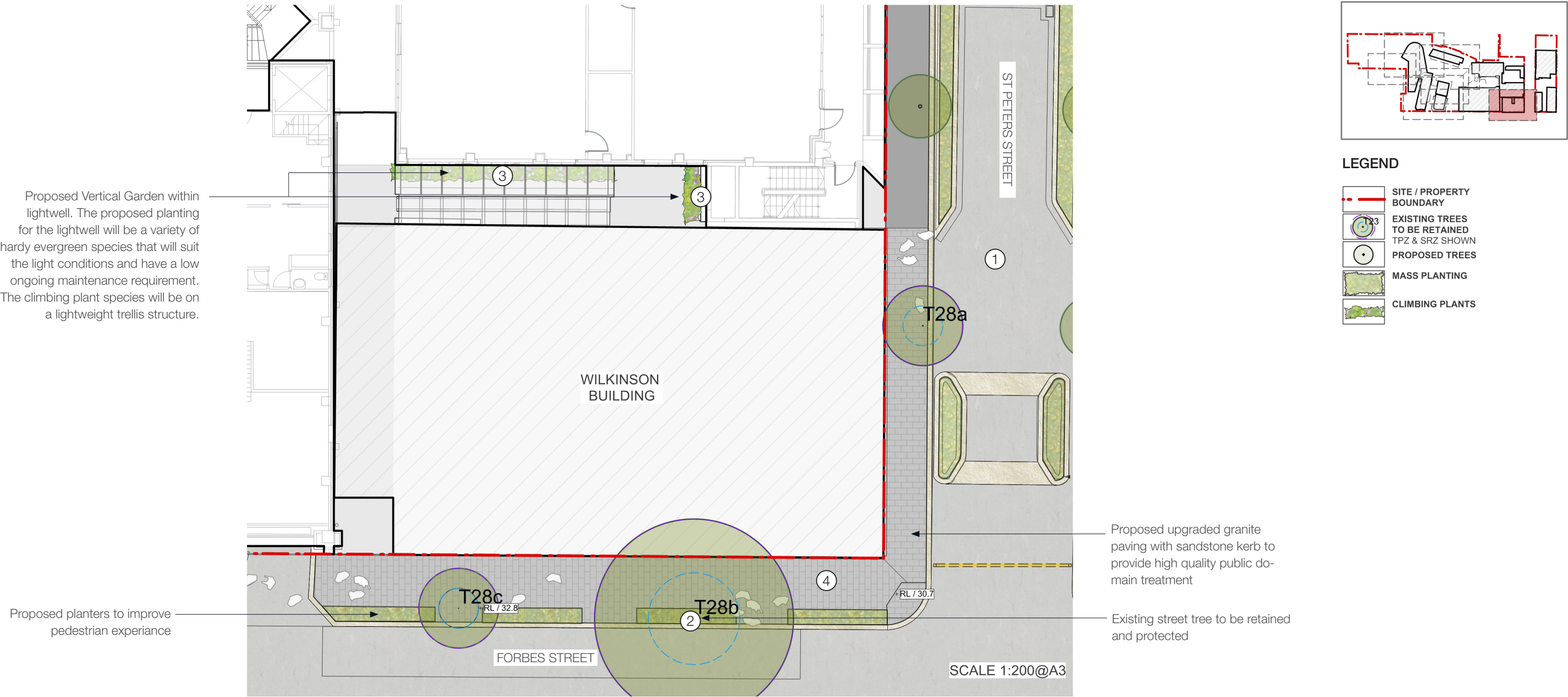
LEGEND

- SITE / PROPERTY BOUNDARY
- EXISTING TREES TO BE RETAINED TPZ & SRZ SHOWN
- PROPOSED TREES
- TREE TO BE REMOVED
- FEATURE PLANTING
- MASS PLANTING
- TURFED AREA
- SYNTHETIC TURF
- EXISTING DECOMPOSED GRANITE
- INSITU CONCRETE WALL
- CONCRETE BLEACHER STEPS
- PAVING TYPE 1: LARGE FORMAT STONE PAVING
- PAVING TYPE 2: RECYCLED HERRINGBONE BRICK PAVING
- FURNITURE

- 1 FORBES STREET ENTRY
- 2 BARHAM BUILDING CURTLAGE
- 3 CENTRAL LAWN
- 4 GATHERING NODES
- 5 PODIUM/ROOFTOP
- 6 PASSIVE ZONE
- 7 EXISTING FIG TREE TO BE RETAINED + PROTECTED
- 8 JACARANDA GATE
- 9 FORECOURT
- 10 THOMSON STREET

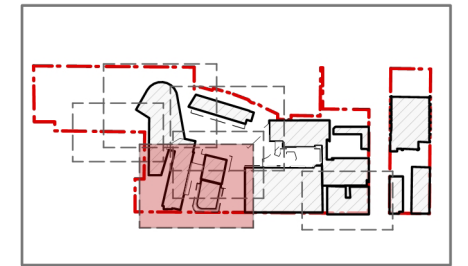


CHARACTER ZONE - WILKINSON HOUSE





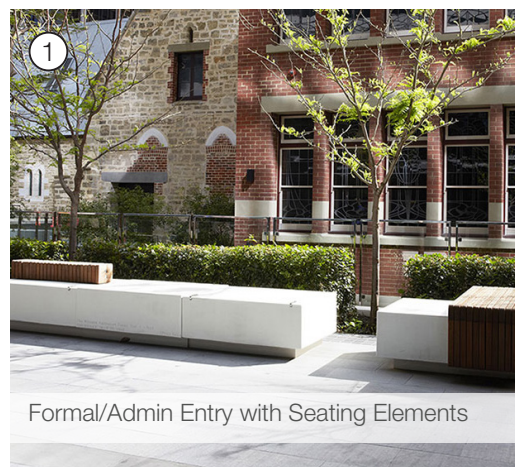
# CHARACTER ZONE - FORBES STREET ENTRY



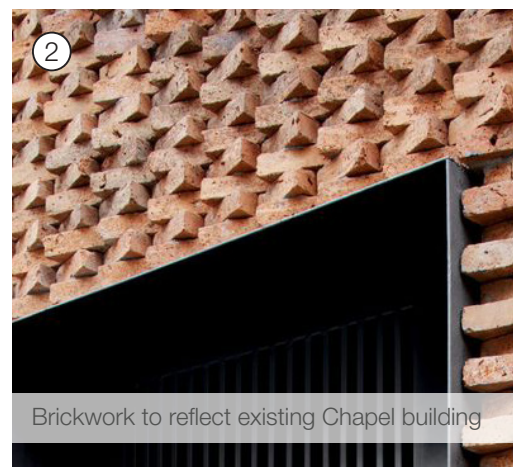
## LEGEND

	SITE / PROPERTY BOUNDARY
	EXISTING TREES TO BE RETAINED TPZ & SRZ SHOWN
	PROPOSED TREES
	TREE TO BE REMOVED
	FEATURE PLANTING
	MASS PLANTING
	CLIMBING PLANTS
	TURFED AREA
	SYNTHETIC TURF
	EXISTING DECOMPOSED GRANITE
	INSITU CONCRETE WALL
	CONCRETE BLEACHER STEPS
	PAVING TYPE 1: LARGE FORMAT STONE PAVING
	PAVING TYPE 2: RECYCLED HERRINGBONE BRICK PAVING
	ENGRAVED EDGING

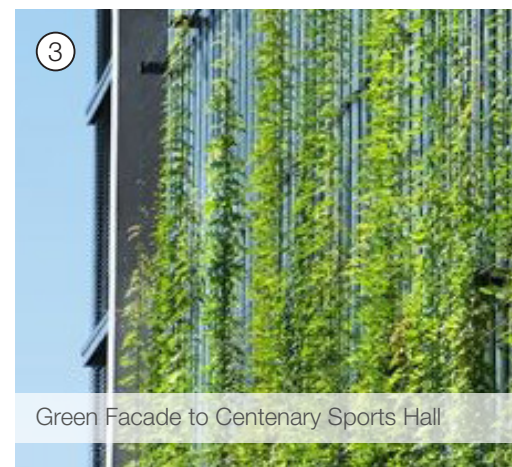
- Green facade to existing brickwork
- Formalised entry paving with planting and precast seating elements
- Stair access to basement level
- Stair access to proposed admin building
- Proposed feature entry tree
- Replace 'Jacaranda Gate' as primary student entry point



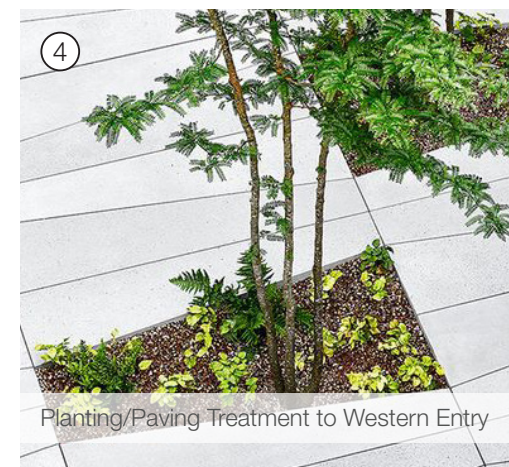
Formal/Admin Entry with Seating Elements



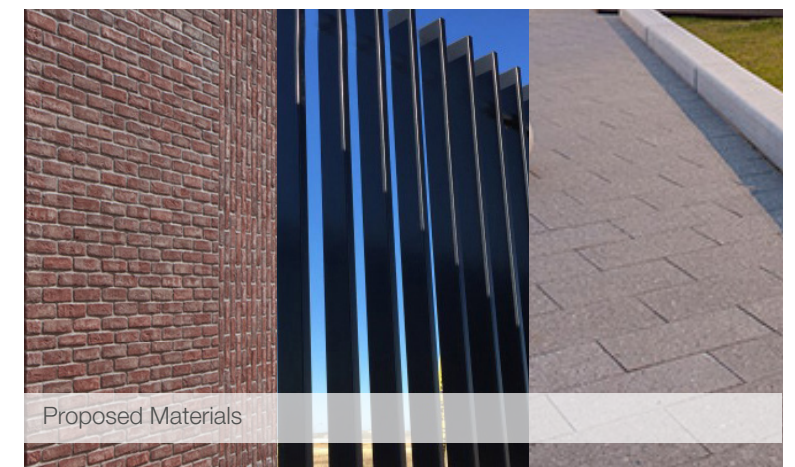
Brickwork to reflect existing Chapel building



Green Facade to Centenary Sports Hall



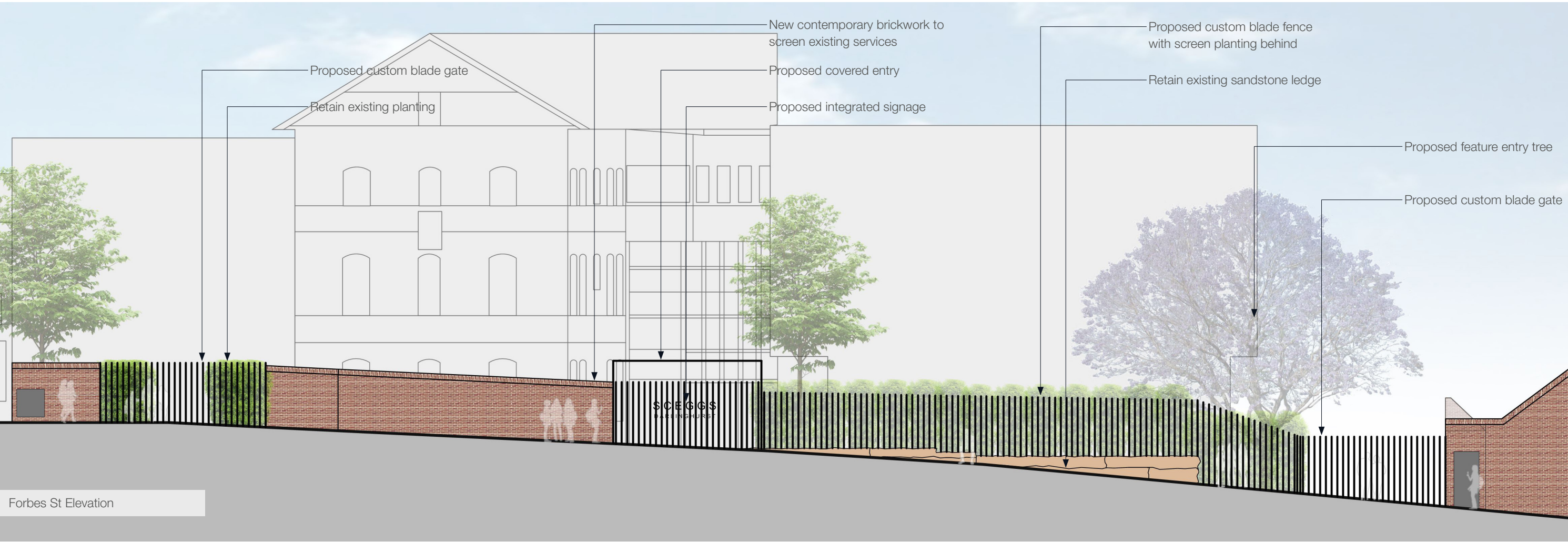
Planting/Paving Treatment to Western Entry



Proposed Materials



CHARACTER ZONE - FORBES STREET ELEVATION



Contemporary brickwork



Custom blade style fence



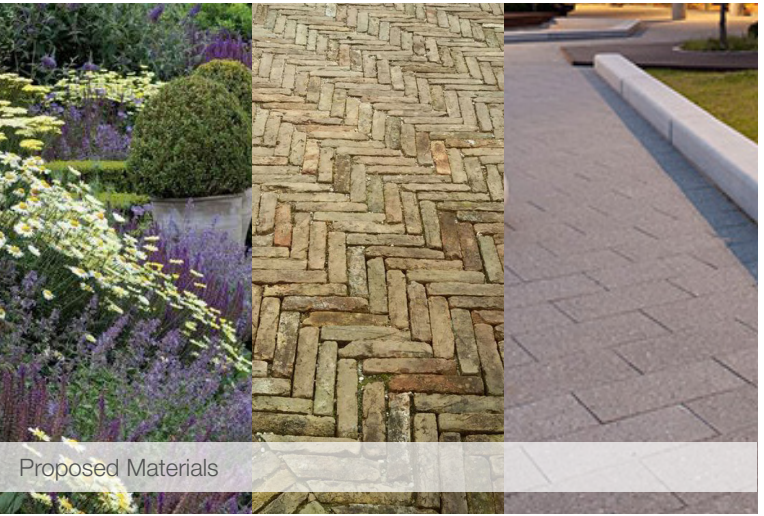
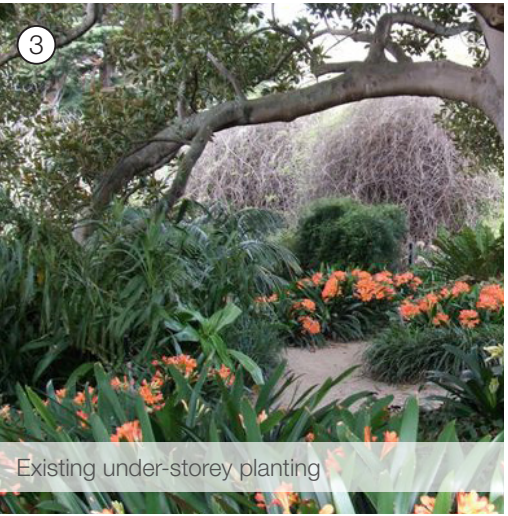
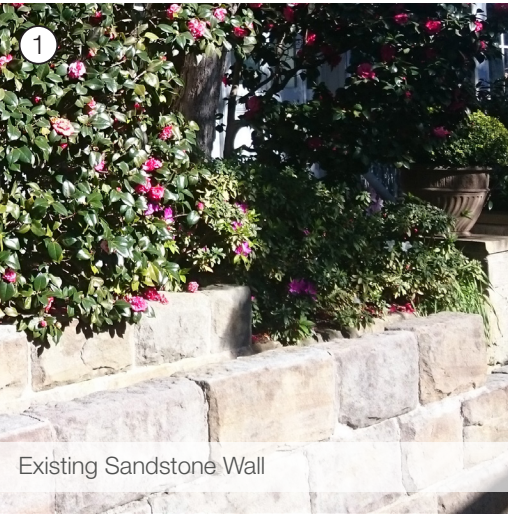
Existing sandstone shelf



Integrated entry signage

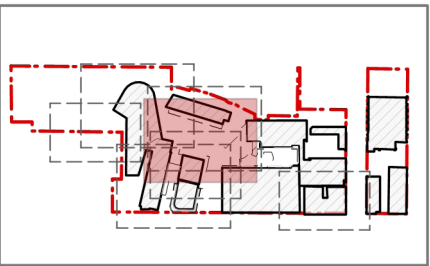


CHARACTER ZONE - HERITAGE ZONE



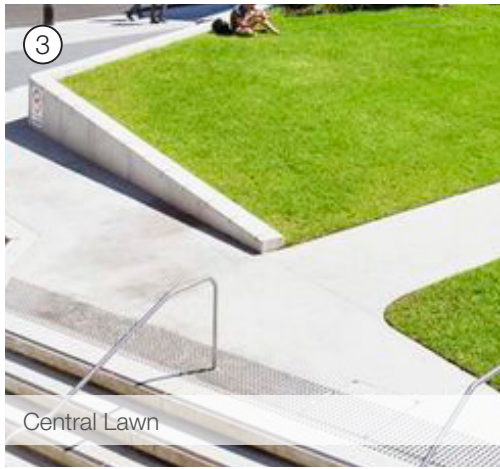
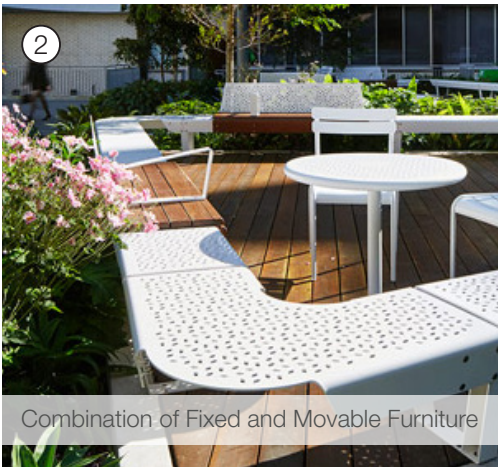
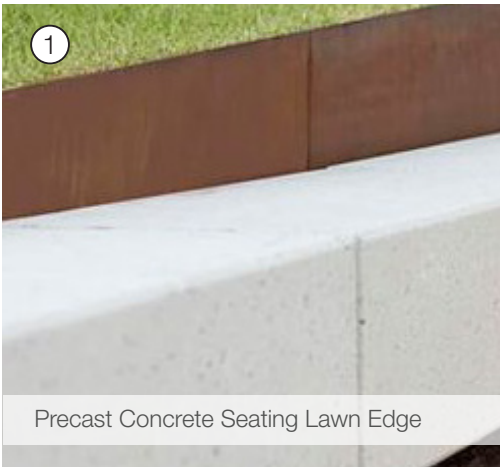


CHARACTER ZONE - CENTRAL LAWN



LEGEND

- SITE / PROPERTY BOUNDARY
- EXISTING TREES TO BE RETAINED TPZ & SRZ SHOWN
- PROPOSED TREES
- FEATURE PLANTING
- MASS PLANTING
- TURFED AREA
- EXISTING DECOMPOSED GRANITE
- INSITU CONCRETE WALL
- CONCRETE BLEACHER STEPS
- PAVING TYPE 1: LARGE FORMAT STONE PAVING
- PAVING TYPE 2: RECYCLED HERRINGBONE BRICK PAVING
- FURNITURE
- ENGRAVED EDGING





## CHARACTER ZONE - CENTRAL LAWN



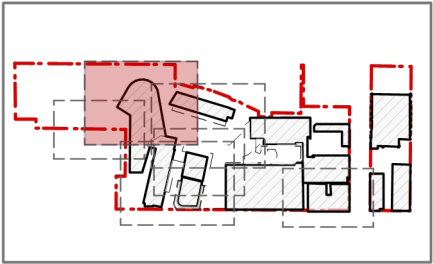
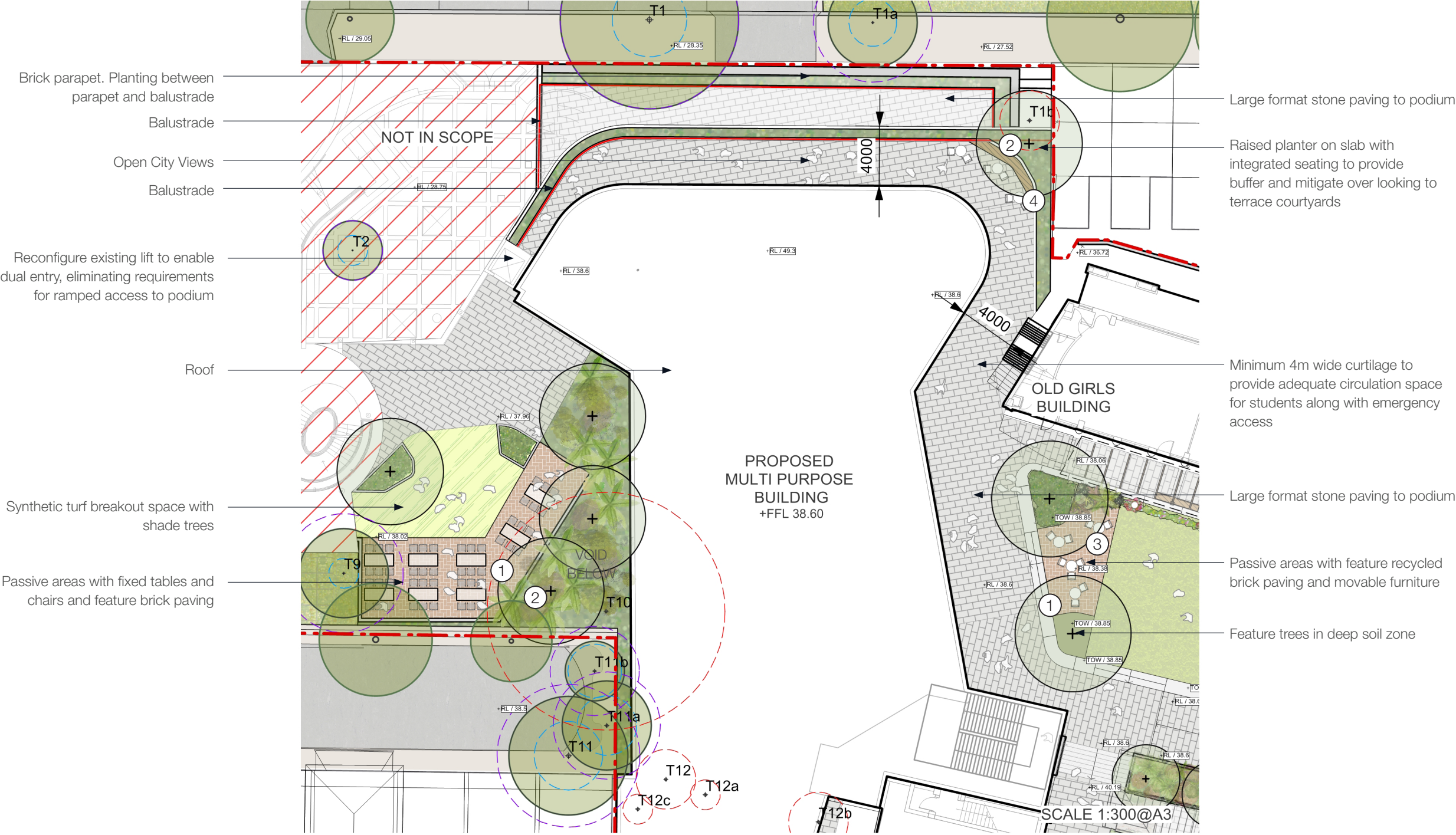


CHARACTER ZONE - CENTRAL LAWN



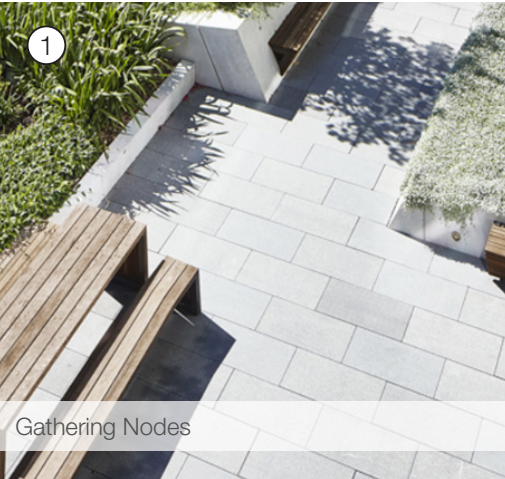


CHARACTER ZONES - PODIUM + ROOFTOP



LEGEND

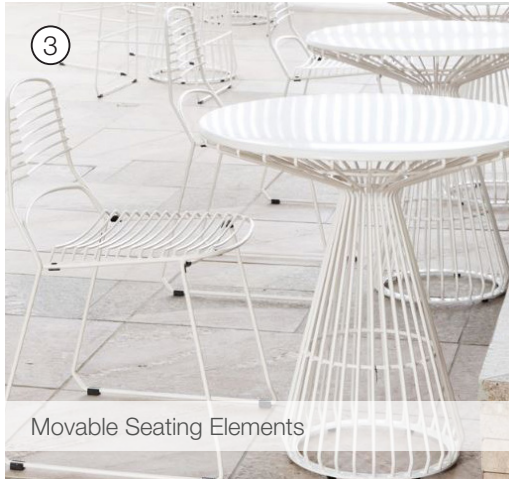
	SITE / PROPERTY BOUNDARY
	EXISTING TREES TO BE RETAINED TPZ & SRZ SHOWN
	PROPOSED TREES
	TREE TO BE REMOVED
	FEATURE PLANTING
	MASS PLANTING
	TURFED AREA
	SYNTHETIC TURF
	EXISTING DECOMPOSED GRANITE
	INSITU CONCRETE WALL
	CONCRETE BLEACHER STEPS
	PAVING TYPE 1: LARGE FORMAT STONE PAVING
	PAVING TYPE 2: RECYCLED HERRINGBONE BRICK PAVING
	FURNITURE



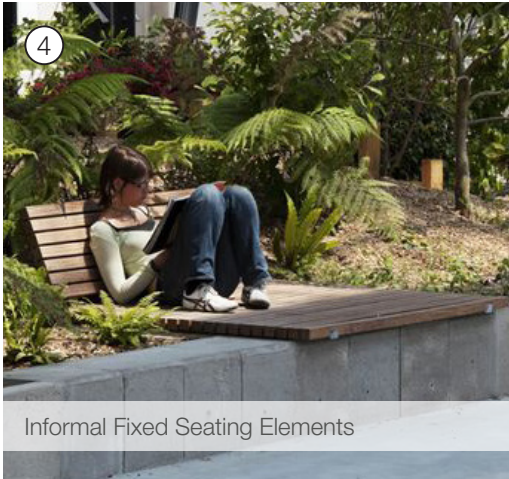
Gathering Nodes



Layered Planting



Movable Seating Elements



Informal Fixed Seating Elements



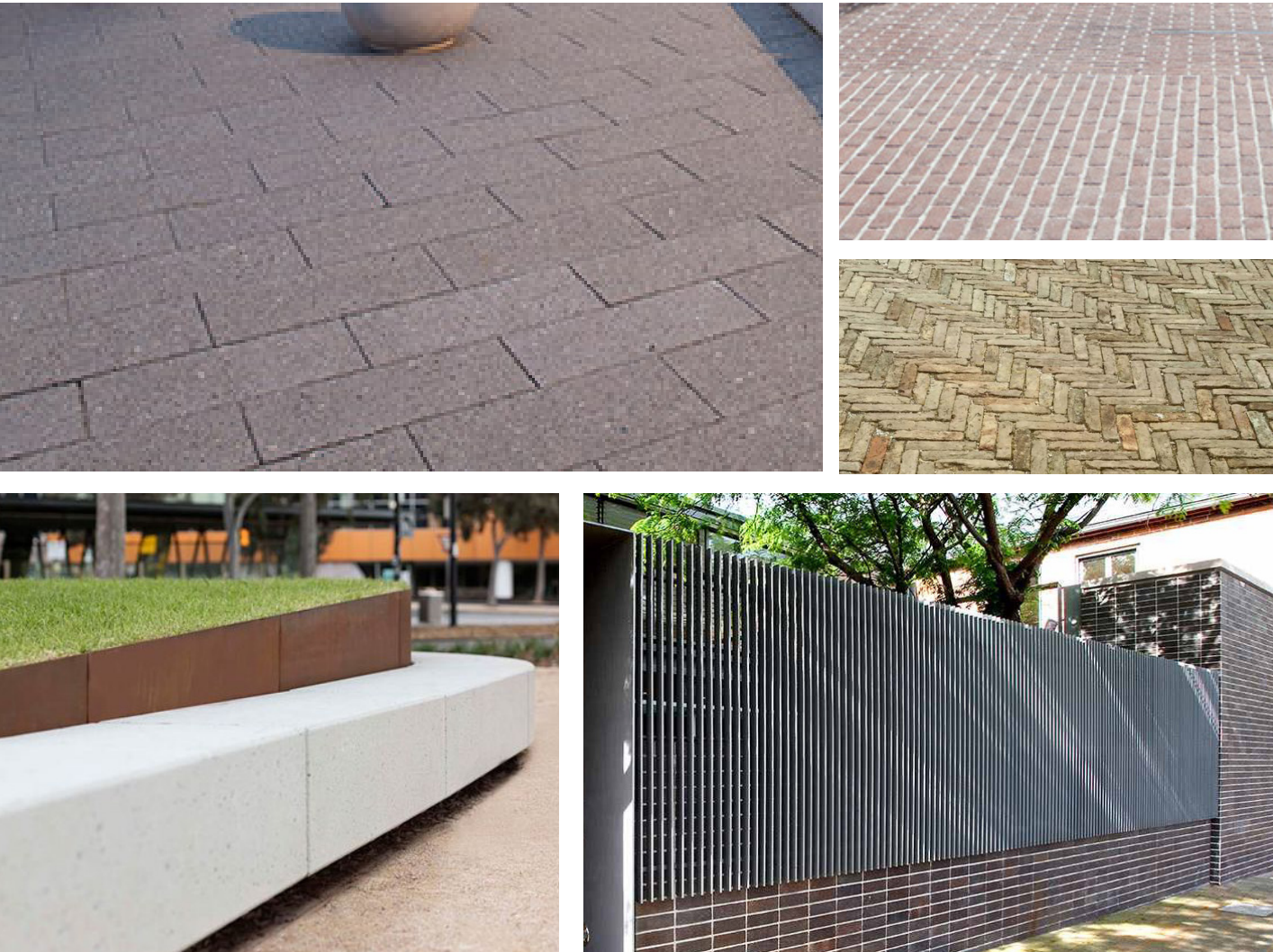
Proposed Materials



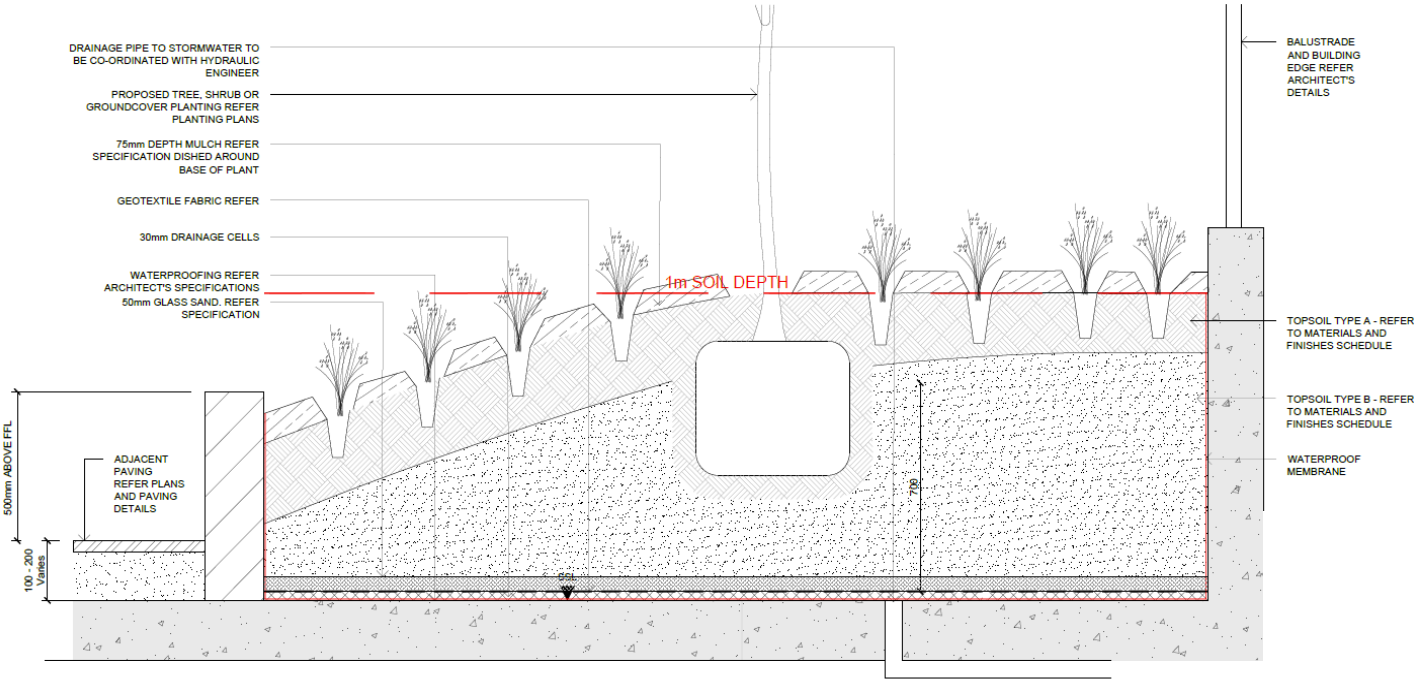


MATERIALITY

MATERIALS PALLETTE



TYPICAL TREE PLANTING ON PODIUM



INDICATIVE PLANT SCHEDULE

BOTANICAL NAME	COMMON NAME	MATURE HxW (m)	SPACING	INSTALLATION POT SIZE
Trees				
<i>Citrus limon</i>	Lemon Tree	5x4m	As shown	45L
<i>Cupaniopsis anacardioides</i>	Tuckeroo	8x5m	As shown	45L
<i>Jacaranda mimosifolia</i>	Jacaranda	10x7m	As shown	100L
<i>Lagerstroemia indica</i> 'Natchez'	Crepe Myrtle	6x4m	As shown	45L
<i>Malus domestica</i>	Apple Tree	3x4m	1000mm	45L
<i>Olea europaea</i>	Olive Tree	8x4m	As shown	100L
<i>Pyrus communis</i>	European pear	3x4m	1000mm	45L
<i>Rhapis excelsa</i>	Broadleaf Lady Palm	3x1m	As shown	45L
<i>Syzygium smithii</i>	Lilly Pilly	8x6m	As shown	45L
Shrubs (1.5-3m)				
<i>Azalea rhododendron</i>	Rhododendron	3x3m	2/m <sup>2</sup>	300mm
<i>Brunfelsia bonodora</i>	Yesterday Today Tomorrow	3x2m	2/m <sup>2</sup>	300mm
<i>Callistemon citrinus</i>	Crimson Bottlebrush	3x2m	As shown	300mm
<i>Camellia sasanqua</i>	Camellia	4x2m	2/m <sup>2</sup>	45L
<i>Syzygium australe</i> 'Select form'	Select Form Lilly Pilly	3x1.5m	3/m <sup>2</sup>	300mm
Low Shrubs (1-1.5m)				
<i>Acanthus mollis</i>	Oyster Plant	2x0.5m	As shown	200mm
<i>Agapanthus orientalis</i>	African Lily	1x0.8m	4/m <sup>2</sup>	200mm
<i>Anemone x hybrida</i>	Japanese Windflowers	1x0.5m	6/m <sup>2</sup>	200mm
<i>Buxus japonica</i>	Japanese Box Hedge	1.5x1.0m	2/m <sup>2</sup>	200mm
<i>Echium candicans</i>	Pride of Madeira	1.8x1.2m	As shown	200mm
<i>Gardenia augusta</i> 'Florida'	Fragrant Gardenia	1x1m	As shown	200mm
<i>Guzmania bromeliad</i>	Bromeliad	0.5x0.5m	6/m <sup>2</sup>	150mm
<i>Ozothamnus diosmifolius</i>	Riceflower	1.5x1m	4/m <sup>2</sup>	200mm
<i>Rhaphiolepis indica</i>	White Indian Hawthorn	1.0x1.0m	2/m <sup>2</sup>	300mm
<i>Rhaphiolepis indica</i> 'Oriental pearl'	Oriental Pearl Indian Hawthorn	1.0x1.0m	2/m <sup>2</sup>	200mm
<i>Rosmarinus officinalis</i>	Rosemary	1.5x0.9m	3/m <sup>2</sup>	150mm
<i>Sansevieria trifasciata</i>	Mother in Law's Tongue	1.5x0.5m	6/m <sup>2</sup>	150mm
<i>Teucrium fruticans</i>	Silver Germander	1.2x1.8m	2/m <sup>2</sup>	200mm
Groundcover				
<i>Clivia miniata</i>	Clivia / Kaffir Lily	0.4x0.4m	8/m <sup>2</sup>	150mm
<i>Convolvulus sabatius</i>	Bindweed	0.3x1.5m	5/m <sup>2</sup>	150mm
<i>Dianella caerulea</i>	Blue flax-lily	0.5x0.5m	6/m <sup>2</sup>	300mm
<i>Dichondra repens</i>	Kidney Weed	0.1x1.0m	4/m <sup>2</sup>	150mm
<i>Erigeron karvinskianus</i>	Seaside Daisy	0.6x0.3m	4/m <sup>2</sup>	150mm
<i>Liriope muscari</i> 'evergreen giant'	Lily Turf	0.5x0.7m	6/m <sup>2</sup>	150mm
<i>Lomandra longifolia</i> 'Tanika'	Tanika	0.5x0.7m	6/m <sup>2</sup>	150mm
<i>Ophiopogon japonicus</i>	Mondo Grass	0.2x0.15m	11/m <sup>2</sup>	100mm
<i>Philodendron xanadu</i>	Xanadu	0.6x0.6m	4/m <sup>2</sup>	150mm
<i>Trachelospermum asiaticum</i>	Japanese Star Jasmine	0.3xProstrate	3/m <sup>2</sup>	200mm
Climbers/trailers				
<i>Pandorea pandorana</i>	Wonga Wonga Vine	5x3m	300mm	150mm
<i>Clematis aristata</i>	Australian Clematis	0.3xProstrate	300mm	150mm