

17 September 2019

Our ref: 19NEW-13891

Frasers Property Australia
Level 2, 1C Homebush Bay Drive
Rhodes, NSW, 2138

Attention: Chris Koukoutaris

Dear Chris,

Ivanhoe Estate Redevelopment (SSD 8903) - Stage 1 Arboriculture Assessment Summary

Eco Logical Australia has undertaken an arboricultural assessment for the Ivanhoe Estate Redevelopment (SSD 8707) on behalf of Land and Housing Corporation and Frasers Property Australia. This letter describes the arboricultural impacts associated with Stage 1 (SSD 8708). Tree removal and biodiversity impacts are assessed under a separate application (SSD 8707).

The attached figure shows the trees within Stage 1 that are:

- to be removed under the Stage 1 works (108 trees)
- to be removed under demolition works being undertaken by LAHC and therefore not subject of the SSD 8708 (46 trees)
- there will be nine trees subject to no, low, or medium impacts.

All other planted vegetation within the Stage 1 boundary, including all trees in backyards, will be removed.

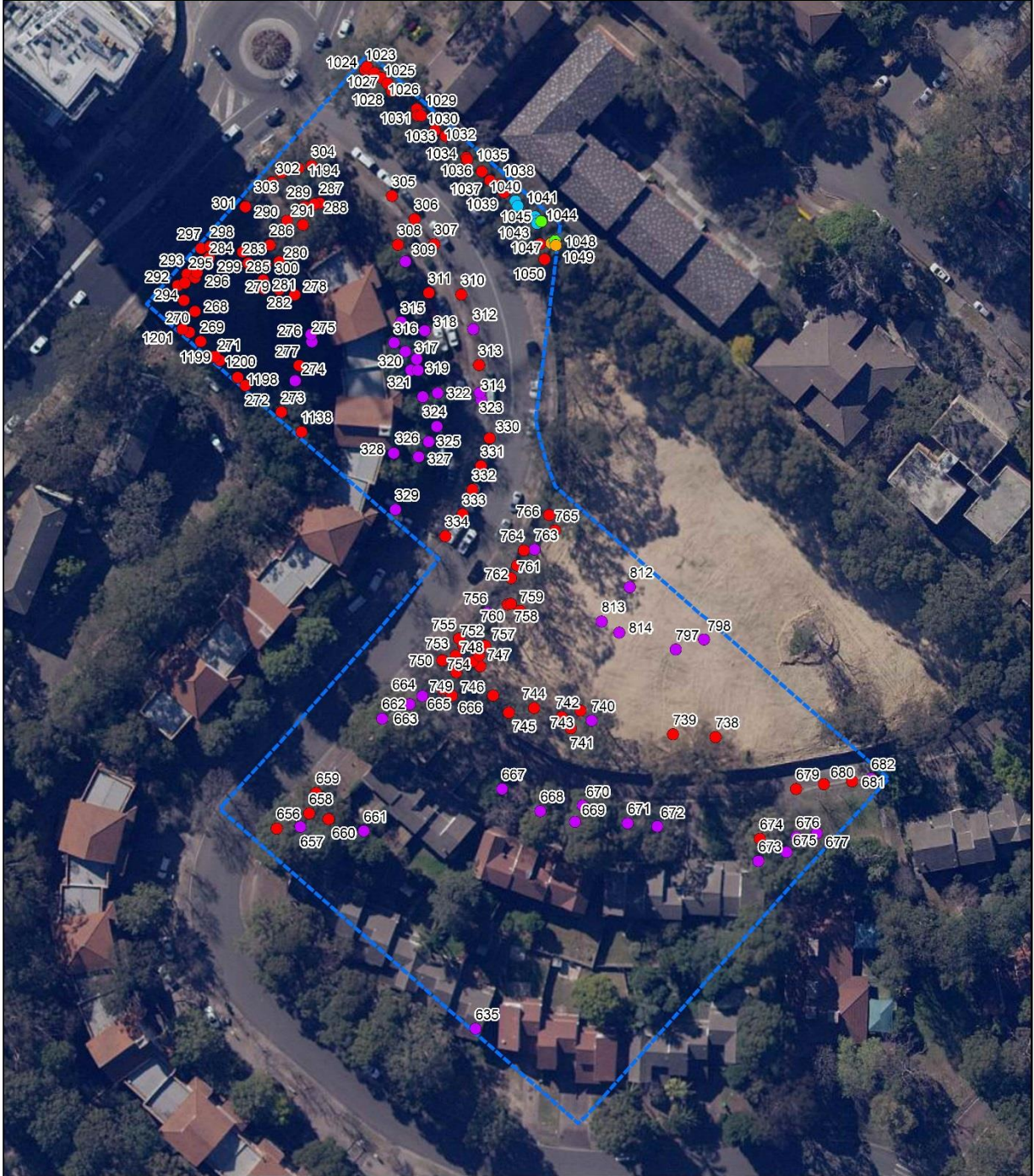
Full details of the trees are contained in *Ivanhoe Estate Redevelopment – Arboriculture Impact Assessment* (ELA 2019) for the Ivanhoe Estate Concept Plan (SSD 8707).

Regards,



Alex Pursche
Senior Ecologist

Stage 1 Impacts - Arborist



Legend

Stage 1

Tree Impacts (Stage 1)

- High Impact
- Medium Impact
- Low Impact
- No Impact
- Removed in Demolition

0 10 20 40
Metres
Datum/Projection: GDA 1994 MGA Zone 56

eco logical AUSTRALIA
www.ecoaus.com.au
Prepared by: EB/DH Date: 17/09/2019

Figure 1- Updated Stage 1 plan