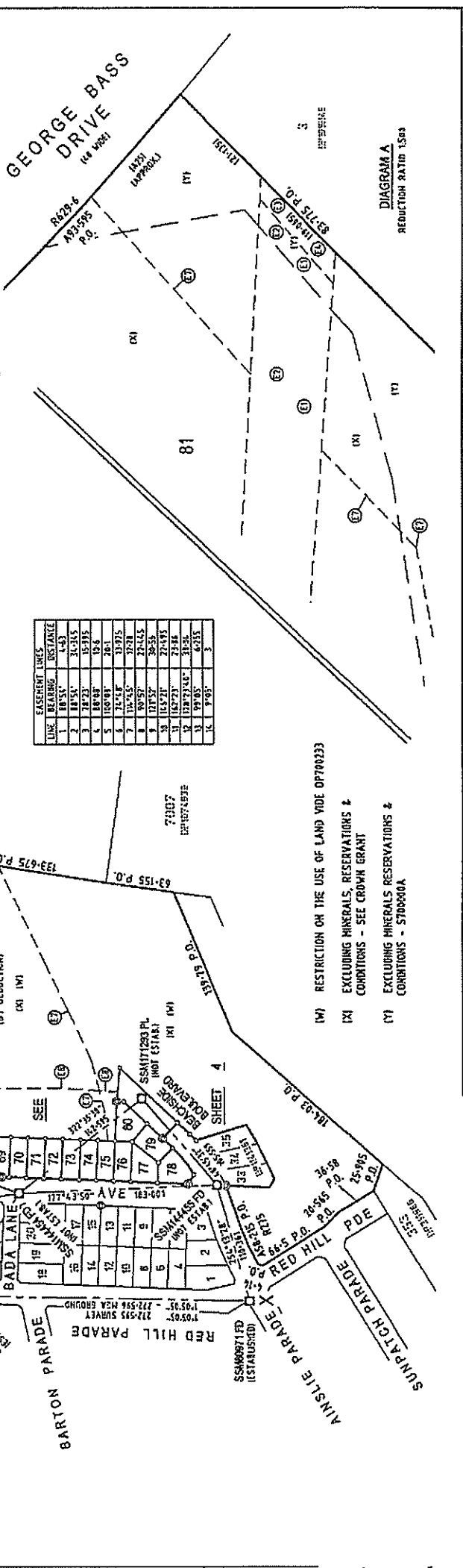


MARKS	SURVEYING & SPATIAL ORIENTATION REGULATION 2004 - CLAUSE 35(1)(b), 6(1)			METHOD	ORIGIN	ACCURACY
	HEGA	CO-ORDINATES	C1 (PRO)			
PH 00971	246310.95	69374.75	B	2	SCPS	50mm
PH 00972	246310.95	69374.75	B	2	SCPS	50mm
SS 10212	246375.267	693687.411	B	2	SCPS	50mm
SS 10455	246476.44	693644.78	U	U	Industrial Traverse	Placed 50mm
SS 10791	246435.59	693672.99	U	U	Industrial Traverse	Placed 50mm
SS 10792	246495.21	693638.21	U	U	Industrial Traverse	Placed 50mm
SS 10793	246555.29	693610.35	U	U	Industrial Traverse	Placed 50mm

- (E) EASEMENT TO DRAIN SEWAGE VARIABLE WIDTH (DP 62716)
- (F) EASEMENT FOR WATER SUPPLY VARIABLE WIDTH (DP 62716)
- (G) EASEMENT FOR DRAINAGE OF SEWAGE VARIABLE WIDTH (DP 101614)
- (H) EASEMENT FOR WATER SUPPLY VARIABLE WIDTH (DP 101614)
- (I) EASEMENT FOR DRAINAGE OF SEWAGE OVER EXISTING LINE OF PIPES (APPROXIMATE POSITION) - SEWER RISING MAIN
- (J) EASEMENT FOR WATER SUPPLY OVER EXISTING LINE OF PIPES (APPROXIMATE POSITION) - TRUNK WATER MAIN
- (K) RIGHT OF CARRIAGEWAY OVER THE TRACK IN USE (APPROXIMATE POSITION OF CENTRELINE OF TRACK AS INDICATED BY SIX PORTAL AERIAL PHOTOGRAPHY DATED 2006)
- (L) EASEMENT FOR ASSET PROTECTION ZONE 20 WIDE
- (M) EASEMENT FOR TELECOMMUNICATION SERVICE 3 WIDE



Surveyor: Jason R Hay
 Date of Survey: 28/10/2010
 Surveyor's Ref: 142462SV00

PLAN OF SUBDIVISION OF LOT 81
 IN DP1147557

LGA: EUROBODALLA
 Locality: TOMAKIN
 Subdivision No: 3864
Reduction Ratio 1:250

Registered: 31.1.2011
 DP1158006