

SAFETY & SITE MANAGEMENT NOTES

A. PRINCIPAL CONTRACTOR

- REFER TO CONTRACT DOCUMENTS (STD-905) FOR PRINCIPAL CONTRACTOR REQUIREMENTS AND RESPONSIBILITIES

B. SITE ESTABLISHMENT - REFER DWG CMP - 02

- PRINCIPAL CONTRACTOR TO PREPARE TRAFFIC MANAGEMENT PLAN, EMERGENCY PLANS, SITE INDUCTION MATERIAL
- IDENTIFIED RISKS:
 - DBYD INFO (EXPOSE EXISTING SERVICES)
 - SITE SIGNAGE (VISITOR ACCESS REQUIREMENTS, SITE INDUCTIONS ETC.)
 - EMERGENCY MANAGEMENT PLAN / FIRST AID / EGRESS
 - TRAFFIC MANAGEMENT
- CODES OF PRACTICE:
 - CONSTRUCTION WORK - C.O.P (SWA)
 - FIRST AID IN THE WORKPLACE - C.O.P (SWA)
 - TRAFFIC MANAGEMENT IN WORKPLACES DRAFT C.O.P (SWA)

C. DEMOLITION - REFER DWG DP - 01

- DEMOLITION TO BE CARRIED OUT BY A LICENSED DEMOLITION CONTRACTOR IN ACCORDANCE WITH THE CONTRACT DOCUMENTS SCOPE OF WORKS AND CODES OF PRACTICE NOMINATED BELOW
- DEMOLITION CONTRACTOR TO PREPARE DETAILED DEMOLITION PLAN, TRAFFIC MANAGEMENT PLAN, WASTE MANAGEMENT PLAN, WHS PLAN, AND SHMS FOR ALL DEMOLITION WORK.
- ALL EXISTING BUILDINGS TO BE ASSESSED FOR ASBESTOS AND HAVE ASBESTOS REMOVED BY A LICENSED CONTRACTOR IN ACCORDANCE WITH RELEVANT CODES OF PRACTICE.
- EXISTING STRUCTURES TO BE ASSESSED BY A STRUCTURAL ENGINEER TO DETERMINE THE SAFEST METHOD FOR DEMOLITION.
- REFER TO SAFE DESIGN REPORT FOR FUTURE DEMOLITION PROCEDURE OF PROPOSED STRUCTURES.
- CODES OF PRACTICE:
 - DEMOLITION WORK - C.O.P (SWA)
 - CONFINED SPACES - C.O.P (SWA)
 - HOW TO SAFELY REMOVE ASBESTOS - C.O.P (SWA)
 - HOW TO MANAGE AND CONTROL ASBESTOS IN THE WORKPLACE - C.O.P (SWA)
 - DRAFT CRANES - C.O.P (SWA)

D. EXCAVATION

- EXCAVATION CONTRACTOR REQUIREMENTS: GEOTECH REPORT, EXCAVATION SAFETY PLAN, DEMOLITION PLAN, WASTE MANAGEMENT, TRAFFIC MANAGEMENT, EMERGENCY PLANS
- PREPARE A SHMS FOR ALL EXCAVATION (INCLUDING BORED PIERS).
- PROVIDE TEMPORARY BARRIERS AROUND ALL OPEN EXCAVATION AND CHANGES IN LEVEL GREATER THAN 600mm.
- CODES OF PRACTICE:
 - EXCAVATION WORK - C.O.P (SWA)
 - CONSTRUCTION WORK - C.O.P (SWA)
 - CONFINED SPACES - C.O.P (SWA)
 - MANAGING THE RISK OF FALLS AT WORKPLACES - C.O.P (SWA)

E. CONSTRUCTION

- PRINCIPAL CONTRACTOR TO PREPARE SHMS & WHS MANAGEMENT PLANS. REFER TO TEMPLATES IN THE CONSTRUCTION WORK CODE OF PRACTICE.
- DIAL BEFORE YOU DIG REPORTS TO BE COORDINATED AND ALL EXISTING SERVICES IDENTIFIED PRIOR TO CONSTRUCTION.
- CONTRACTOR TO PREPARE SHMS FOR ALL WORK CARRIED OUT UNDER POWER LINES INCLUDING CONCRETE VERGE CROSSINGS, VEHICULAR DELIVERIES, MATERIALS HANDLING WITH CRANES, DETERMINE HEIGHT OF EXISTING POWER LINES AND ESTABLISH NO-GO ZONES IN ACCORDANCE WITH CODES OF PRACTICE. INSTALL WARNING SIGNAGE AND HIGH VISIBILITY BUNTING TO DELINEATE NO-GO ZONE.
- CODES OF PRACTICE:
 - CONSTRUCTION WORK - C.O.P (SWA)
 - DRAFT CRANES - C.O.P (SWA)
 - HCO1344 WORK NEAR OVERHEAD POWERLINES - C.O.P (WORKCOVER NSW)
 - MANAGING ELECTRICAL RISKS IN THE WORKPLACE - C.O.P (SWA)
 - DRAFT - WORKING IN THE VICINITY OF OVERHEAD AND UNDERGROUND ELECTRIC LINES - C.O.P (SWA)

F. CONFINED SPACES

- ACCESS TO CONFINED SPACES TO BE RESTRICTED AND MANAGED IN ACCORDANCE WITH THE PRINCIPAL CONTRACTORS WHS REPORT AND RELEVANT CODES OF PRACTICE.
- IDENTIFIED RISKS:
 - TANKS INSTALLATION
 - EXCAVATIONS
 - ROOF VOIDS
- CODES OF PRACTICE:
 - CONFINED SPACES - C.O.P (SWA)

G. SLIPS, TRIPS & FALLS

- PRINCIPAL CONTRACTOR TO IDENTIFY RISKS OF SLIPS, TRIPS & FALLS AND INCLUDE METHODS TO ELIMINATE OR REDUCE RISK IN THE WHS MANAGEMENT PLAN.
- MAINTAIN CONSTRUCTION SITE FREE OF LOOSE DEBRIS.
- IDENTIFIED RISKS:
 - FLOOR FINISHES (SLIP RESISTANCE)
 - STAIRS & RAMPS (SLIP RESISTANCE, HIGHLIGHTING STRIPS, TACTILES ETC.)
 - PEDESTRIAN PATHS OF TRAVEL CLEARLY MARKED
 - ROOF ACCESS PROVISIONS & FALL ARREST SYSTEMS
 - OPEN EXCAVATIONS (PROVIDE WARNING TAPE / TEMPORARY BARRIERS)
 - WORKING AT HEIGHTS (DEMOLITION, BUILDING ROOFS, SAFETY WIRE MESH ETC.)
- CODES OF PRACTICE:
 - MANAGING THE RISK OF FALLS AT WORKPLACES - C.O.P (SWA)
 - PREVENTING FALLS IN HOUSING CONSTRUCTION - C.O.P (SWA)

H. FALLING OBJECTS

- PRINCIPAL CONTRACTOR TO IDENTIFY RISKS OF FALLING OBJECTS AND INCLUDE METHODS TO ELIMINATE OR REDUCE RISK IN THE WHS MANAGEMENT PLAN.
- MOVEMENT OF MATERIAL WITH CRANES TO BE PERFORMED WHOLLY WITHIN THE SITE IN ACCORDANCE WITH SHMS.
- IDENTIFIED RISKS:
 - WORKING AT HEIGHTS (LOOSE MATERIAL OR SMALL OBJECTS)
 - DEMOLITION OF BUILDING COMPONENTS
 - WORKING IN EXCAVATED TRENCHES (BATTERS, GEOTEXTILE, FENCING ETC.)
 - TEMPORARY BRACINGS FOR UNFINISHED STRUCTURES
 - LIFTING BY CRANES / FORKLIFTS
- CODES OF PRACTICE:
 - CONSTRUCTION WORK - C.O.P (SWA)
 - DEMOLITION WORK - C.O.P (SWA)
 - EXCAVATION WORK - C.O.P (SWA)
 - DRAFT CRANES - C.O.P (SWA)

I. OPERATIONAL USE OF BUILDING

- THE COMPLETED SITE IS TO BE OPERATED IN ACCORDANCE WITH FUEL INDUSTRY SAFETY PROCEDURES.
- IDENTIFIED RISKS:
 - FIRST AID IN THE WORKPLACE - C.O.P (SWA)
 - MANAGING THE RISK OF FALLS AT WORKPLACES - C.O.P (SWA)
- CODES OF PRACTICE:
 - CONFINED SPACES - C.O.P (SWA)

K. HAZARDOUS SUBSTANCES

- PRINCIPAL CONTRACTOR TO IDENTIFY HAZARDOUS SUBSTANCES AT ALL STAGES OF CONSTRUCTION AND HANDLE IN ACCORDANCE WITH RELEVANT SPECIFICATIONS.
- EXISTING BUILDINGS ON THIS SITE MAY CONTAIN ASBESTOS, REFER DEMOLITION NOTES FOR FURTHER DETAIL.
- IDENTIFIED RISKS:
 - ASBESTOS
 - ABOVEGROUND LPG TANK
 - UNDERGROUND FUEL TANKS
- CODES OF PRACTICE:
 - HOW TO SAFELY REMOVE ASBESTOS - C.O.P (SWA)
 - HOW TO MANAGE AND CONTROL ASBESTOS IN THE WORKPLACE - C.O.P (SWA)
 - MANAGING RISKS OF HAZARDOUS CHEMICALS IN THE WORKPLACE - C.O.P (SWA)
 - HCO4046 SAFE HANDLING OF TIMBER PRESERVATIVES AND TREATED TIMBER - C.O.P (WORKCOVER NSW)

L. STATE WORK HEALTH & SAFETY AUTHORITY NSW:

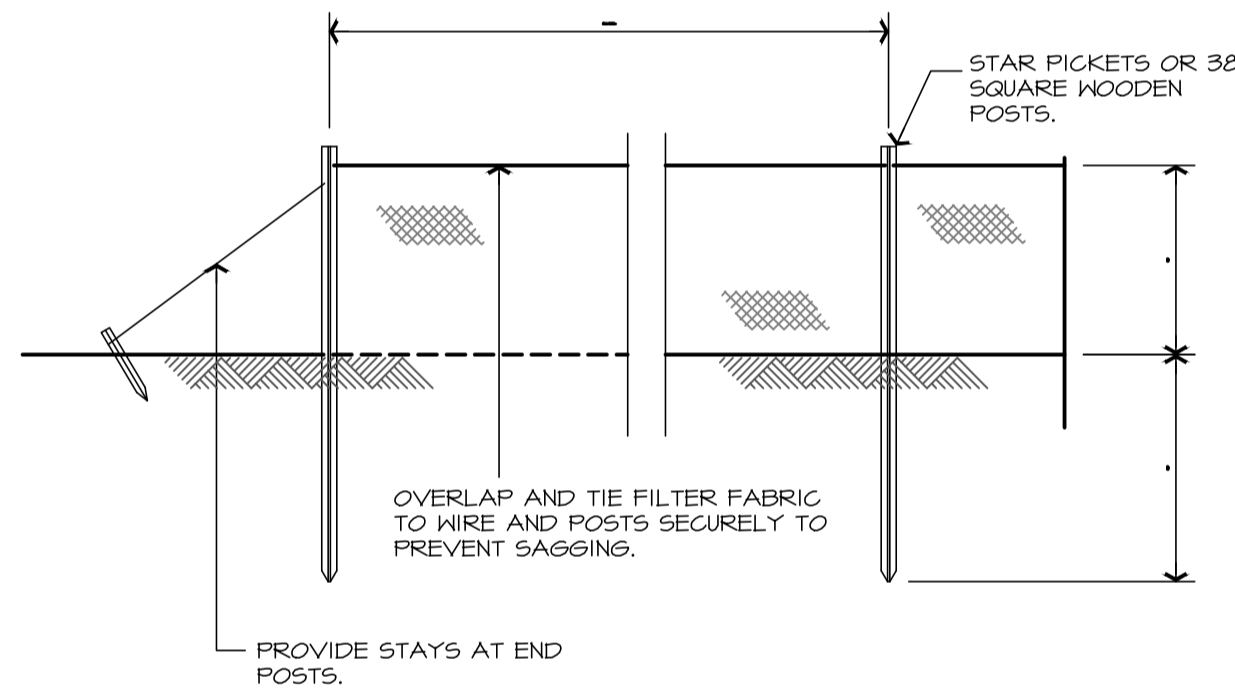
WorkCover NSW
 Website: www.workcover.nsw.gov.au
 Telephone: 13 10 50

M. WORK PLACE CLEARANCE GROUP (WPCG)

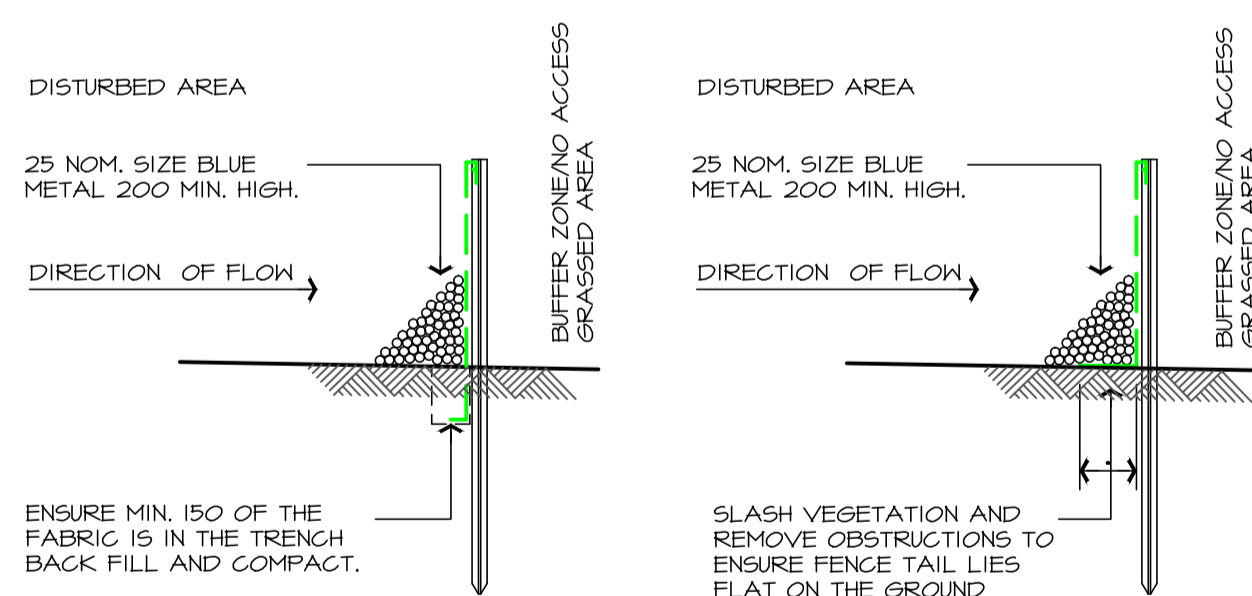
- PRINCIPAL CONTRACTOR TO BE TRAINED AND CURRENTLY ACCREDITED BY WPCG TO WORK ON FUEL SITES.
- PRINCIPAL CONTRACTOR SHALL ABIDE BY ALL THE REGULATIONS OF WPCG THROUGHOUT THE COURSE OF CONSTRUCTION.
- PRINCIPAL CONTRACTOR SHALL OBTAIN ALL HOT WORKS PERMITS PRIOR TO ANY DEMOLITION AND CONSTRUCTION WORKS ON SITE.

ABBREVIATIONS LEGEND

C.O.P - CODE OF PRACTICE
 DBYD - DIAL BEFORE YOU DIG (www.100.com.au)
 SWA - SAFE WORK AUSTRALIA (www.safeworkaustralia.com.au)
 SHMS - SAFE WORK METHOD STATEMENT
 WHS - WORKPLACE HEALTH & SAFETY



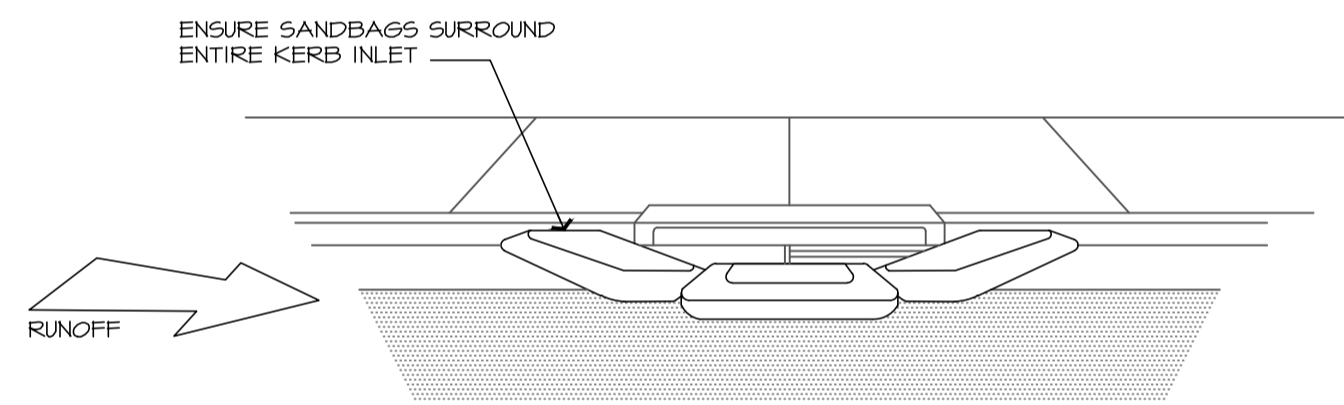
TYPICAL SILT FENCE ELEVATION



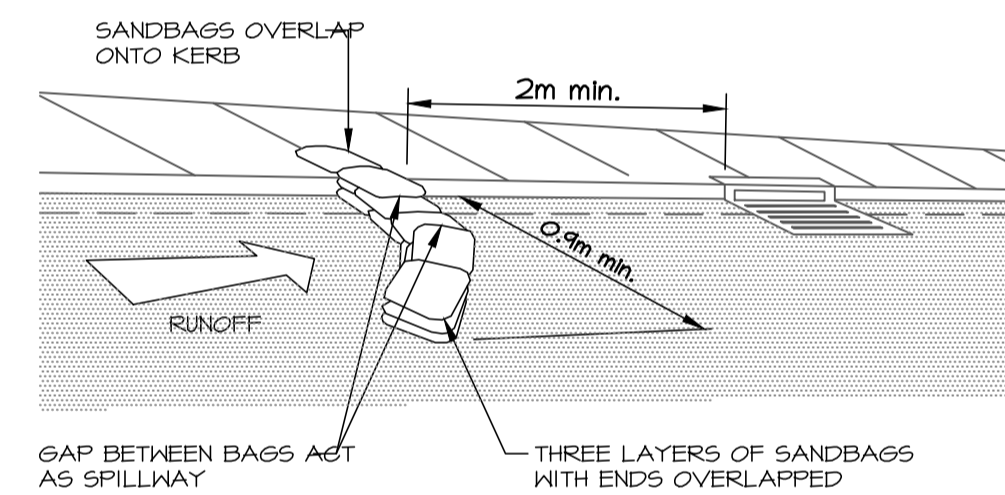
OPTION 1

OPTION 2

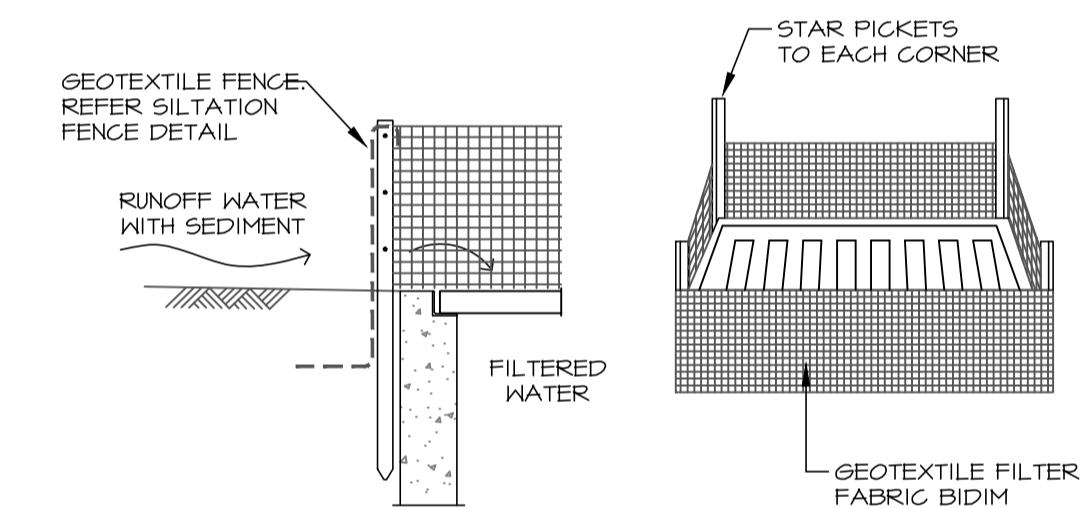
TYPICAL SILT FENCE SECTIONS



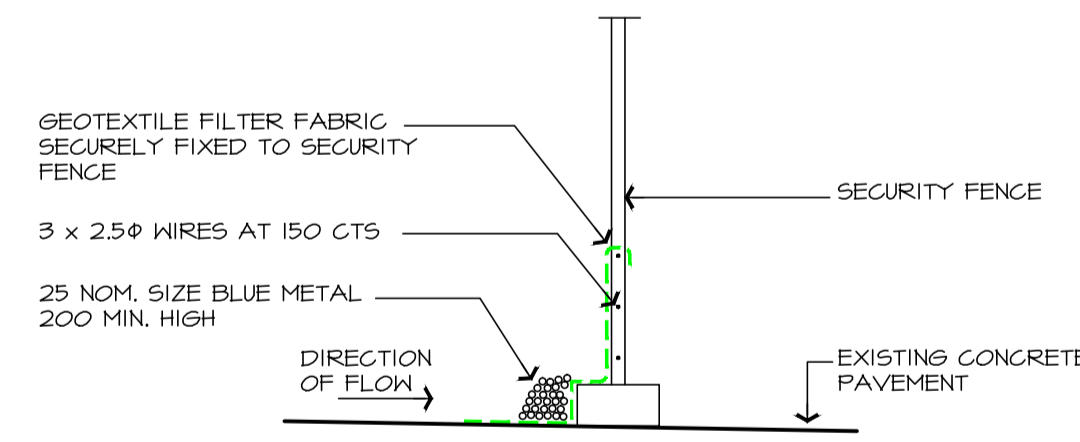
SANDBAG SEDIMENT TRAP AT EXISTING STORMWATER PIT



SANDBAG SEDIMENT TRAP (SST)
NTS

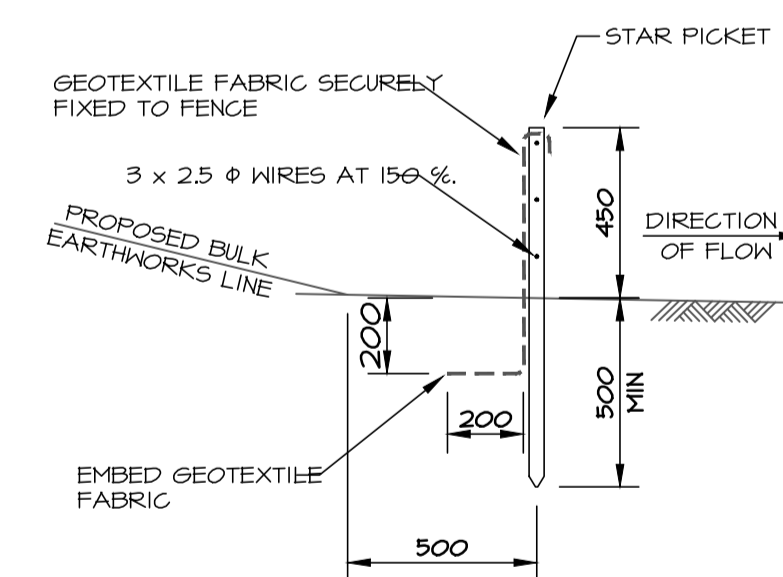


GEOTEXTILE FILTER PIT (GFP)
NTS



SILT/SECURITY FENCE DETAIL

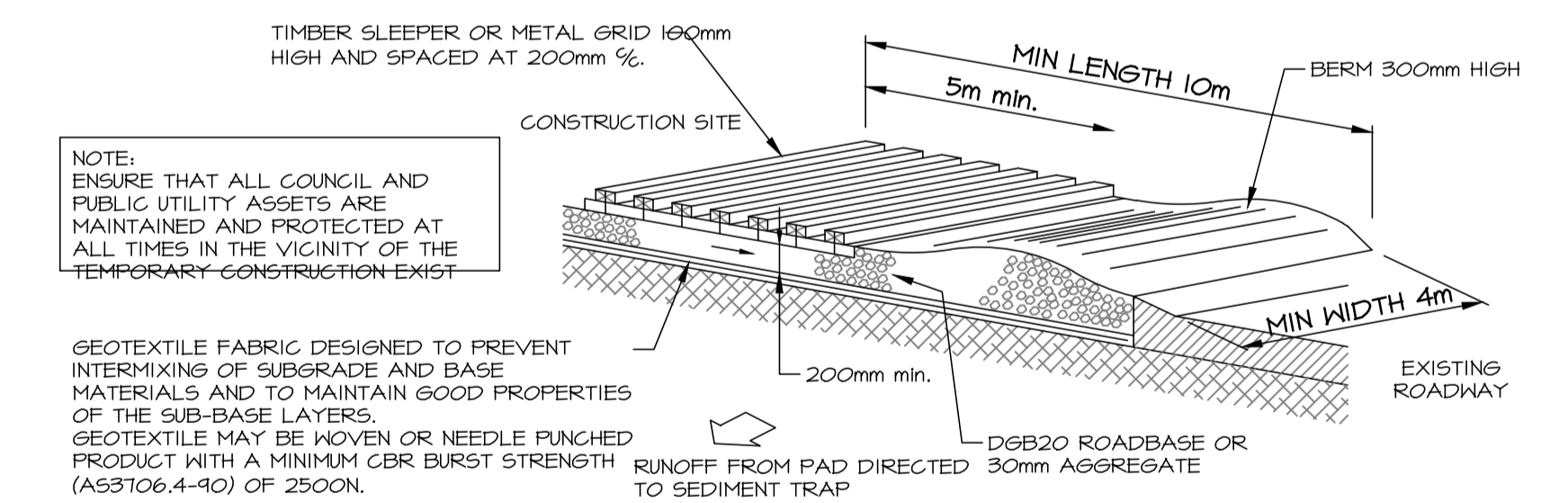
NOTE: END OF SILT/SECURITY FENCE TO RETURN UP SLOPE TO PREVENT RUNOFF



NOTE: ENDS OF SILTATION FENCE TO BE RETURNED UP SLOPE TO PREVENT RUNOFF

SILTATION FENCE (SF)

NTS



NOTE: ENSURE THAT ALL COUNCIL AND PUBLIC UTILITY ASSETS ARE MAINTAINED AND PROTECTED AT ALL TIMES IN THE VICINITY OF THE TEMPORARY CONSTRUCTION EXIST

GEOTEXTILE FABRIC DESIGNED TO PREVENT INTERMIXING OF SUBGRADE AND BASE MATERIALS AND TO MAINTAIN GOOD PROPERTIES OF THE SUB-BASE LAYERS. GEOTEXTILE MAY BE WOVEN OR NEEDLE PUNCHED PRODUCT WITH A MINIMUM CBR BURST STRENGTH (A53106.4-10) OF 2500N.

CONSTRUCTION NOTES

- STRIP TOPSOIL AND LEVEL SITE.
- COMPACT SUBGRADE.
- COVER AREA WITH NEEDLE-PUNCHED GEOTEXTILE.
- CONSTRUCT 200MM THICK PAD OVER GEOTEXTILE USING ROADBASE OR 30MM AGGREGATE.
- CONSTRUCT HUMP IMMEDIATELY WITHIN BOUNDARY TO DIVERT WATER TO A SEDIMENT FENCE OR OTHER SEDIMENT TRAP WHERE THE SEDIMENT IS

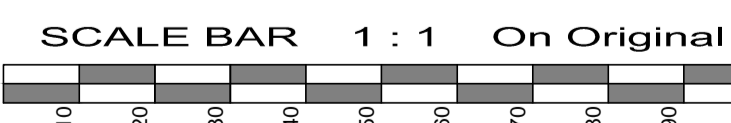
MAINTENANCE NOTES

THE EXIT SHALL BE MAINTAINED IN A CONDITION WHICH PREVENTS TRACKING OR FLOWING OF SEDIMENT OFF THE CONSTRUCTION SITE. THIS MAY REQUIRE PERIODIC TOP DRESSING WITH ADDITIONAL GRAVEL AS CONDITIONS DEMAND AND REPAIR AND/OR CLEANOUT OF ANY MEASURES USED TO TRAP SEDIMENT. ALL SEDIMENT SPILLED, DROPPED, WASHED OR TRACKED OFF THE CONSTRUCTION SITE MUST BE REMOVED IMMEDIATELY.

TEMPORARY STABILISED CONSTRUCTION EXIT.

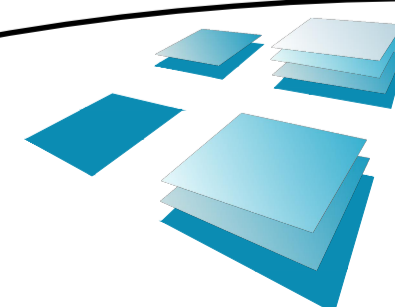
NTS

ISSUED FOR AMENDED DEVELOPMENT APPROVAL NOT FOR CONSTRUCTION



No.	Amendment	By	Date
P1	PRELIMINARY ISSUE FOR APPROVAL ONLY. NOT FOR CONSTRUCTION.	VP	07.03.2014
P2	PRELIMINARY ISSUE FOR APPROVAL.	VP	14.05.2014
P3	PRELIMINARY ISSUE FOR FINAL APPROVAL BEFORE DA ISSUE. NOT FOR CONSTRUCTION.	VP	21.05.2014
DA-1	ISSUED FOR DEVELOPMENT APPROVAL ONLY. NOT FOR CONSTRUCTION.	VP	30.05.2014

MEMBER BUILDING DESIGNERS ASSOCIATION NSW Accredited Building Designer: 6318 BBP Vic: DP-AD 15329 QBSA Lic. No: 11062914



R.J. SINCLAIR Pty Ltd
 Building Design

Office: Suite B111 - Sky City
 NorWest Business Park
 20 Lexington Drive
 BELLA VISTA NSW 2153
 Post: PO Box 503
 ROUND CORNER NSW 2158
 Phone: 02 8883 0999
 Fax: 02 8883 1199
 E-mail: design@rjsinclair.com.au
 Web: www.rjsinclair.com.au
 Architectural - Structural - Project Management

Project
KOORAGANG SERVICE CENTRE
 Part Lot 1 DP 1145444 - 130 CORMORANT ROAD Cnr. EGRET STREET
KOORAGANG NSW
 FOR
SOVECHLES DEVELOPMENTS Pty Ltd
 Drawing Title
CONSTRUCTION MANAGEMENT NOTES AND DETAILS

Approved	Designed
	RJ5
Date	Drawn
11th February 2014	RJ5
Scale	Checked
1: 250 @ A1	
1: 500 @ A3	
Project No.	Amtd.
13 - 065	DA-1
Drawing No.	
CMP - 02	