



NSW GOVERNMENT  
**Department of Planning**

Mark Thomas  
Director  
Coastline Building Certification Group P/L  
PO Box 243  
Banora Point NSW 2486

Contact: Tom FitzGerald  
Phone: 02 9228 6521  
Fax: 02 9228 6540  
Email: [thomas.fitzgerald@planning.nsw.gov.au](mailto:thomas.fitzgerald@planning.nsw.gov.au)  
Our ref: 492-11-2003  
File: 03/03434

Dear Mr Thomas,


**492-11-2003 MIXED USE 4 STOREY BUILDING AT 30 MARINE PARADE, KINGSCLIFF:  
COMPLIANCE**

I refer to your letter dated 6 April 2009 regarding the Director's approval of the external materials, colours and finishes as required by condition B10 of the development consent 492-11-2008.

The Department has reviewed the External Finishes Schedule (undated) provided with your letter and can confirm that the finishes as proposed are generally acceptable and will maintain a similar character to that which exists in the surrounding neighbourhood. Therefore the requirements of condition B10 are considered to be satisfied.

If you have any queries regarding this matter, please do not hesitate to contact Tom FitzGerald using the details provided above.

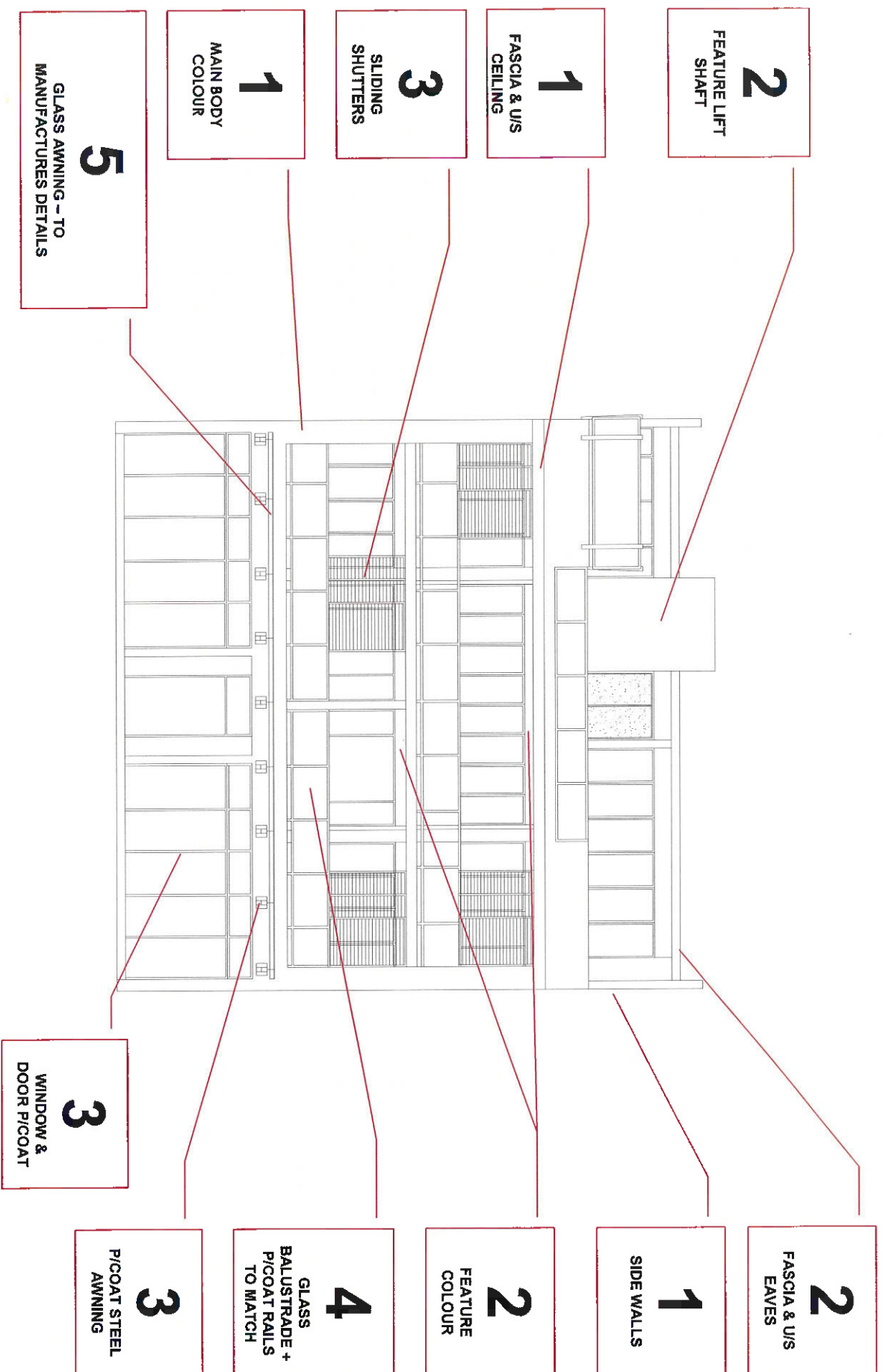
Yours sincerely

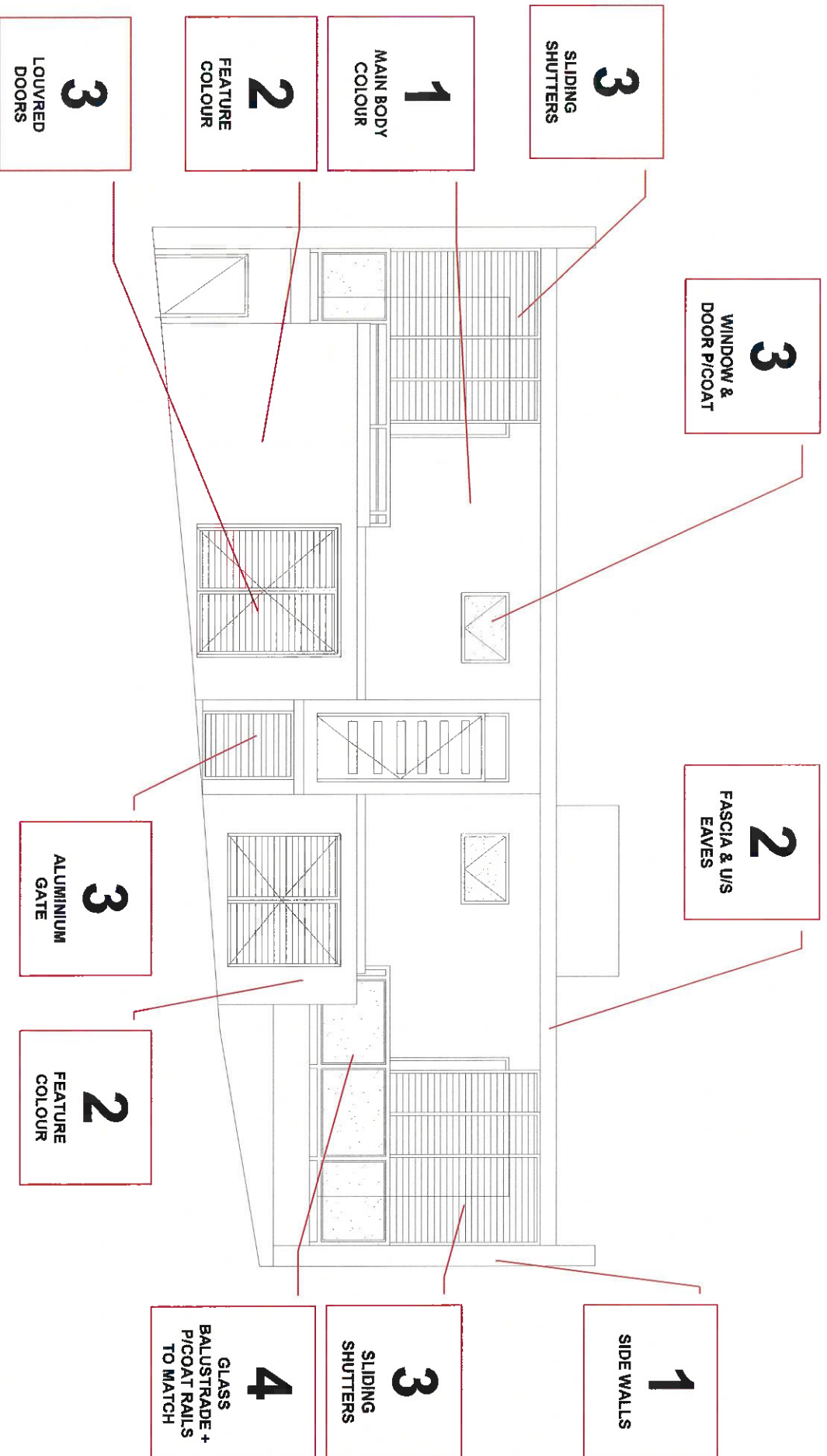
  
29 MAY 2009  
Alan Bright  
A/Director, Coastal Assessments

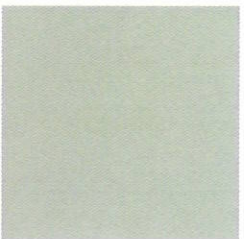
# **EXTERNAL FINISHES SCHEDULE**

**MIXED RESIDENTIAL APARTMENT / COMMERCIAL UNITS "SEA"**

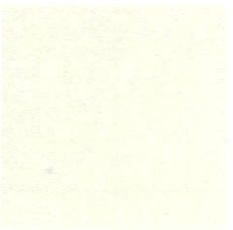
**30 MARINE PARADE  
KINGSCLIFF**



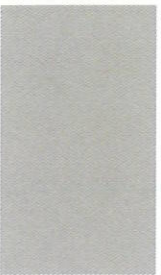




2. POWERED ROCK



3. PORCELAIN



4. AXIS LOW SHEEN



4. GLASS BALUSTRADE