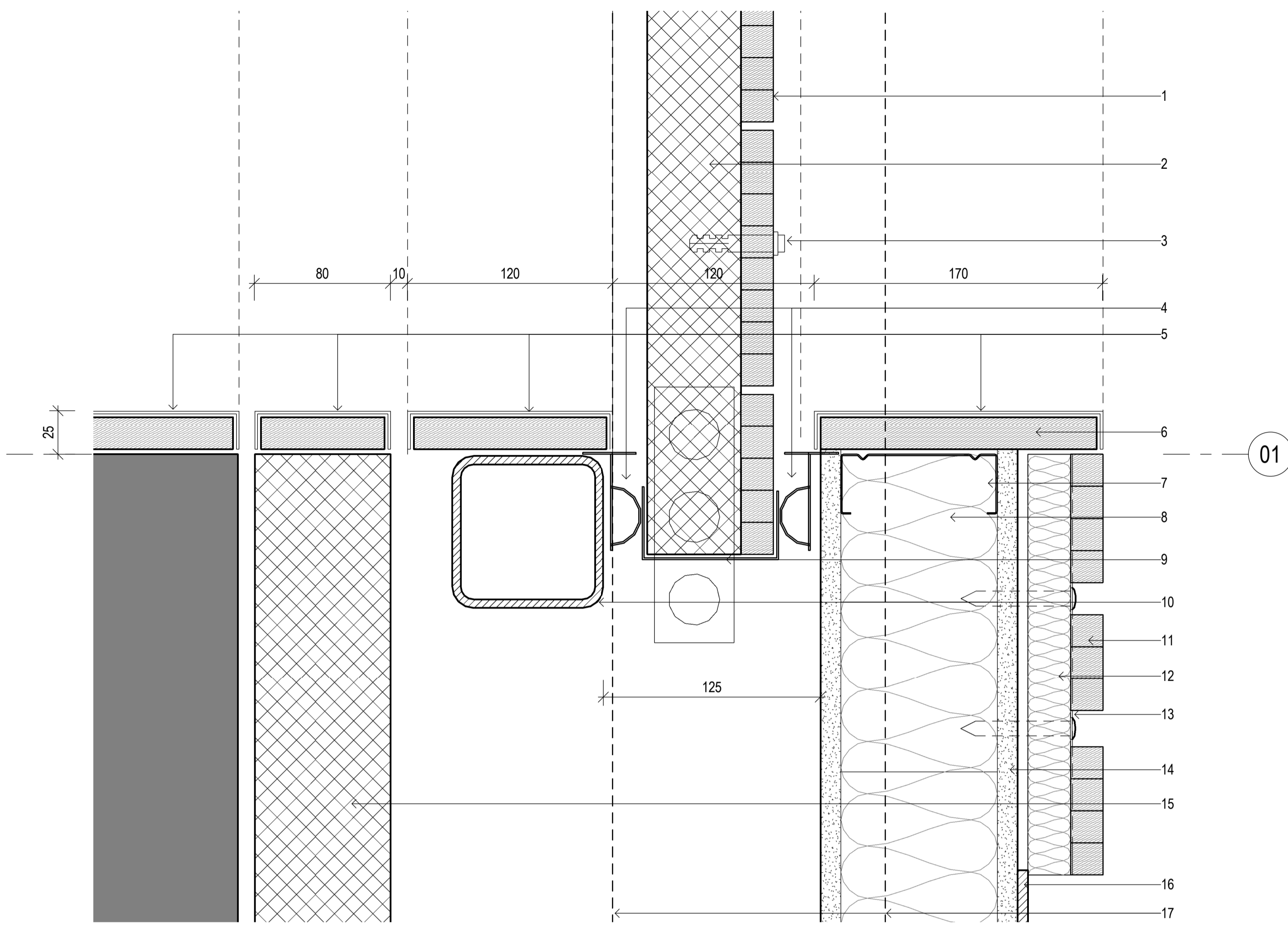


1 PLAN - BENNELONG PASSAGE DOOR  
1:10



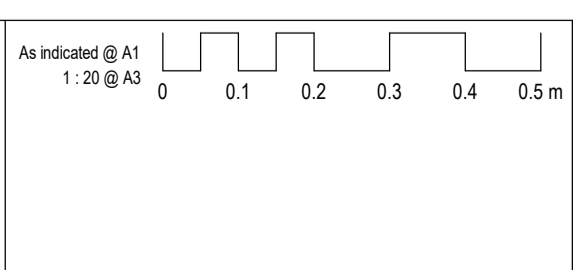
1. IL-321 LAMINATED BRUSHBOX VENEER STRIP OF 19mm x 8
2. D02 SLIDING DOOR LEAF
3. SCREW AND PLUG FIXING
4. ACOUSTIC DOOR SEALS
5. BRONZE JAMB IL-503
6. IL-323 PLYWOOD
7. 92mm STEEL STUD
8. INS-101 INSULATION
9. SLIDING DOOR FLOOR MOUNTED OPERATOR
10. 100mm SHS TO STR. ENG. DETAILS
11. BRUSHBOX LAMINATED BATTEN IL-320
12. INS-102 ACOUSTIC BATTS
13. OPEN WEAVE FABRIC JF-201
14. 12mm FIBRE CEMENT IL-201
15. D01 SLIDING FIRE DOOR
16. HPL COVER STRIP
17. DOOR OPERATOR ABOVE

2 PLAN - BENNELONG PASSAGE DOOR DETAIL  
1:2

- GENERAL NOTES:**
1. THESE DRAWINGS SHOULD BE READ IN CONJUNCTION WITH ALL RELEVANT STRUCTURAL, CIVIL AND SERVICE CONSULTANTS DRAWINGS AND/OR COMPUTATIONS AND WITH ANY OTHER WRITTEN INSTRUCTIONS ISSUED IN THE COURSE OF THE CONTRACT.
  2. ALL DIMENSIONS AND SIZES ARE IN MILLIMETRES.
  3. DO NOT SCALE DRAWINGS.
  4. ALL WALL THICKNESSES DIMENSIONED OR NOTED ARE NOMINAL.
  5. INFORMATION INDICATED IN THIS DOCUMENT MAY BE CRUCIAL TO THE SAFE AND PROPER FUNCTIONING OF THE PROJECT. DO NOT ALTER ANY ASPECT WITHOUT REFERENCE TO THE ARCHITECT.
  6. INFORM THE ARCHITECT OF ANY DISCREPANCIES.
  7. GREY TYPICALLY DENOTES EXISTING STRUCTURE.
  8. REFER ARCHITECTURAL FINISHES AND FIXTURES SCHEDULE FOR FINISHES AND FITMENTS DETAILS.
  9. ALL INTERIOR FINISHES AS SCHEDULED/SPECIFIED AND IN LINE WITH THE STANDARD SOH SPECIFICATIONS.
  10. ALL MATERIALS AND WORK PRACTICES SHALL COMPLY WITH, BUT NOT LIMITED TO THE BUILDING CODE OF AUSTRALIA AND ALL RELEVANT CURRENT AUSTRALIAN STANDARDS (AS AMENDED).
  11. THE CONTRACTOR SHALL SITE-CHECK AND VERIFY ALL DIMENSIONS, EXISTING CONDITIONS, SET-BACKS, LEVELS SPECIFICATIONS AND ALL OTHER RELEVANT DOCUMENTATION PRIOR TO THE COMMENCEMENT OF ANY WORKS. SUBMIT SHOP DRAWINGS, ORDERING OF MATERIALS ETC. AND SHALL REPORT ANY DISCREPANCIES TO THIS OFFICE FOR CLARIFICATION.
  12. IT IS INTENDED THAT ALL THE WORKS SHOWN ON THE DRAWINGS SHALL BE CARRIED OUT BY THE CONTRACTOR. IT IS NOT INTENDED TO SHOW ON THE DRAWINGS EACH AND EVERY ITEM REQUIRED TO CARRY OUT THE CONTRACT WORKS. IT IS EXPECTED THAT THE CONTRACTOR WILL VISIT THE SITE AND ACQUAINT THEMSELVES WITH THE EXTENT OF WORKS.
  13. THE CONTRACT INCLUDES FOR ALL NECESSARY LABOUR, MATERIAL, APPLIANCES, TRANSPORTATION AND SERVICES REQUIRED TO COMPLETE THE CONTRACT WORKS.
  14. THE CONTRACTOR SHALL VERIFY ALL EXISTING CONDITIONS AND CARRY OUT ALL ALTERATIONS, ADJUSTMENTS, ETC TO COMPLETE THE CONTRACT WORKS.
  15. THE CONTRACTOR SHALL, BEFORE ANY WORKS COMMENCE, MAKE SAFE THE FIRE SPRINKLERS AND EMERGENCY SYSTEMS. THE CONTRACTOR WILL BE RESPONSIBLE FOR ANY AND ALL COSTS ASSOCIATED WITH ANY BUILDING FIRE ALARM BEING ACTIVATED BY THE CONTRACTOR.
  16. THE CONTRACTOR SHALL ENSURE THAT ALL NECESSARY PERMITS, INCL. HOT WORK PERMITS ARE OBTAINED PRIOR TO ANY SUCH WORKS GOING AHEAD.
  17. THE CONTRACTOR IS TO ENSURE THAT ANY SMOKE ALARMS OR THE LIKE ARE ISOLATED WHEN ANY SMOKE OR FLAME PRODUCING WORKS ARE LIKELY TO BE CARRIED OUT.
  18. THE CONTRACTOR IS TO SIGN IN AT STAGE DOOR AND ENSURE THAT THERE ARE NO LAST MINUTE SHOWS, REHEARSALS, ETC. SCHEDULED TO OCCUR THAT WILL PREVENT ANY WORKS FROM BEING CARRIED OUT.
  19. PROVIDE A COMPREHENSIVE LIST OF SUPPLIERS/INSTALLERS OF ALL PROPRIETY AND CUSTOM MADE MATERIALS AND EQUIPMENT USED WITHIN THE CONTRACT WORKS. OTHER THAN THOSE GENERALLY AVAILABLE FROM BUILDERS MERCHANTS AND THE LIKE.
  20. THE CONTRACTOR SHALL, AT THE COMPLETION OF WORKS, PROFESSIONALLY CLEAN ALL SURFACES AND ENSURE THAT NO CONSTRUCTION DEBRIS REMAINS.
  21. THE CONTRACTOR SHALL ACQUAINT THEMSELF WITH THE ACCESS ROUTES TOGETHER WITH THE SIZE OF ENTRIES TO ENABLE ALL EQUIPMENT, MATERIALS, COMPONENTS ETC. TO BE SAFELY DELIVERED TO SITE.
  22. THE CONTRACTOR IS RESPONSIBLE FOR THE TIMELY ARRIVAL OF ALL EQUIPMENT, MATERIALS, ETC. TO SITE AND SHALL MAKE HIMSELF FULLY AWARE OF LEAD TIMES FOR ANY MATERIALS, ETC. AND SHALL INFORM THE SUPERINTENDENT, 5 DAYS PRIOR TO THE CONTRACT START, OF ANY SPECIFIED ITEMS THAT WOULD NOT BE AVAILABLE IN TIME TO MEET THE CONTRACT DATES. IF NO SUCH ADVICE IS GIVEN TO THE SUPERINTENDENT THEN THE RESPONSIBILITY FOR SUCH DELAYS WILL FALL ON THE CONTRACTOR.
  23. CONTRACTOR SHALL REMOVE ALL SURFACE MOUNTED SERVICES WITHIN PLANT IN ACCORDANCE WITH CONSULTANTS DETAIL DOCUMENT AND COORDINATE ALL SERVICE REMOVAL WORKS AND NEW PENETRATIONS WITH SOH BEFORE PROCEEDING WITH WORKS.

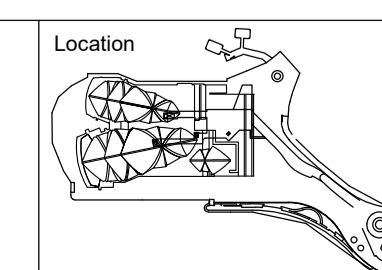
Issue	Description	Dwn	Apvd	Date
A	PRELIMINARY	YY	DS	23.09.2019
B	PRELIMINARY	YY	DS	02.10.2019
C	PRELIMINARY	YY	DS	11.10.2019
D	PRELIMINARY	YY	DS	26.10.2019
1	ISSUED FOR CONSTRUCTION			01.11.2019

**scott carver**  
Level One, One Chifley Square Sydney NSW 2000 Australia  
www.scottcarver.com.au +61 2 9957 3988  
Nom. Architect Doug Southwell/7362



**GENERAL NOTES**  
1. ALL DIMENSIONS AND SIZES ARE IN MILLIMETRES.  
2. DO NOT SCALE DRAWINGS. USE FIGURED DIMENSIONS ONLY.  
3. INFORMATION INDICATED IN THIS DOCUMENT MAY BE CRUCIAL TO THE SAFE AND PROPER FUNCTIONING OF THE SYDNEY OPERA HOUSE. DO NOT ALTER ANY ASPECT WITHOUT WRITTEN PERMISSION.  
4. ALL NEW WORKS MUST COMPLY WITH THE SYDNEY OPERA HOUSE BUILDING SERVICES STANDARD SPECIFICATION (BSSS) AND RELEVANT AUSTRALIAN STANDARDS. NEW WORKS MUST ALSO COMPLY WITH THE REQUIREMENTS OF THE BUILDING CODES OF AUSTRALIA.

**COPYRIGHT**  
THIS DRAWING AND DESIGN ARE SUBJECT TO COPYRIGHT AND SHALL NOT BE COPIED IN ANY FORM WITH THE WRITTEN PERMISSION OF THE SYDNEY OPERA HOUSE TRUST



Status	IFC
Contract	SOH-583
Dwn	YY
Apvd	DS
Date	1/11/2019
Scale	As indicated @ A1

Project	SYDNEY OPERA HOUSE WHITE BOX
Title	BENNELONG PASSAGE DOOR DETAIL 01
Location	SF GF
Drawing No:	49-FB-SC029
Sheet:	CD511
Rev:	1
	A1

Sydney Opera House Trust  
GPO Box 4274 Sydney NSW Australia 2001  
Phone: +61 2 9250 7541  
email: info@sydneyoperahouse.com

**IFC**

© Sydney Opera House Trust