



WAMBO COAL PTY LTD

ABN: 13 000 668 057

100 Melbourne Street  
South Brisbane Qld 4101

PMB 1  
Singleton NSW 2330  
Australia  
Tel + 61 (0) 2 6570 2200  
Fax+ 61 (0) 2 6570 2290

Department of Planning, Industry and Environment  
Locked Bag 5022  
PARRAMATTA NSW 2124

Attention: Director Resource Assessments  
Via - NSW Government Major Projects Portal

Cc – sarah.clibborn@planning.nsw.gov.au

25 June 2021

Dear Mr Sprott,

**SOUTH BATES EXTENSION UNDERGROUND MINE – VARIATION TO  
LONGWALLS 22, 23 AND 24**

Wambo Coal Pty Limited (WCPL) has previously written to the Department of Planning, Industry and Environment (the Department) requesting approval to shorten longwall panels in the South Bates Extension Underground Mine due to the presence of faulting.

The Extraction Plan for Longwalls 21-24 in the South Bates Underground Extension Mine was approved by the Department on 1 April 2021. The identification of further faulting at the main headings and finishing ends of Longwalls 22 to 24, now requires Longwall 22 to be shortened by 233m (from 1,705m to 1,472m), Longwall 23 by 467m (from 1,870m to 1,403 m) and Longwall 24 to be shortened by 178m (from 1,705m to 1,527m).

Schedule 2, Condition A2 of WCPL's Development Consent (DA 305-7-2003, as modified) states –

**Note:** *With the approval of the Planning Secretary, longwall panels may be shortened or narrowed, providing that the proposed variations do not result in increased subsidence impacts or environmental consequences.*

**Environmental Features in the Vicinity of Longwalls 22, 23 and 24**

The depth of cover in the vicinity of the commencing ends of Longwalls 22, 23 and 24 is between 220 m and 290 m. The depth of cover in the vicinity of the finishing ends of Longwalls 22, 23 and 24 is between 60 m and 70 m. Environmental features directly overlying or in the vicinity of the longwalls are summarised in Table 1 and are shown in Enclosure 1.

Shortening Longwalls 22, 23 and 24 will not increase previously assessed impacts to any of these features.

**Table 1 – Environmental Features in the Vicinity of Longwalls 22, 23 and 24**

Environmental Feature	Full Length Longwalls	Shortened Longwalls
Central Hunter Valley Eucalypt Forest and Woodland Community	Directly overlying all longwalls.	Reduced area directly overlying all longwalls.
	Direct subsidence impacts predicted.	Reduced area of direct subsidence impacts.
Other Threatened Ecological Communities	Directly overlying Longwall 24.	No change to area overlying Longwall 24.
	Direct subsidence impacts predicted.	No change to direct subsidence impacts.
North Wambo Creek	Directly overlying Longwalls 23 and 24.	Reduced length overlying Longwall 23. No change to length overlying Longwall 24.
	Direct subsidence impacts predicted.	Reduced direct subsidence impacts due to Longwall 23. No change to subsidence impacts due to Longwall 24.
Small and unimportant ephemeral drainage lines	Directly overlying all longwalls.	Reduced length of drainage lines directly overlying all longwalls.
	Direct subsidence impacts predicted.	Reduced direct subsidence impacts.
	Development of topographical depressions and potential for ponding in areas of low topographic relief (i.e. above the north-eastern ends of the longwall panels).	Location of ponding shifted based on new finishing positions, but overall impacts unchanged.
Wollemi National Park	Closest point is approximately 168 m to the south-west of Longwall 24.	No change.
	Outside of 26.5° angle of draw.	No change.
	No material subsidence predicted.	No change.
Wollemi National Park Escarpment	Closest point to Longwall 22 is approximately 252 m to the south-east. Closest point to Longwall 23 is approximately 261 m to the south-west.	Closest point to Longwall 22 is approximately 305 m to the south. Closest point to Longwall 23 is approximately 659 m to the south-west.
	Outside of 26.5° angle of draw.	No change.
	Negligible subsidence impacts and environmental consequences predicted.	No change.

Could the Department please provide confirmation that the shortening of Longwalls 22, 23 and 24, as proposed is satisfactory? Once the shortening of the longwalls has been confirmed by DPIE, the Main Text of the Extraction Plan for Longwalls 21-24 will be updated as required.

Please do not hesitate to contact me on (02) 6570 2206 or at the email provided below if you have any queries in regard to the above or if you require additional information.

Yours faithfully,

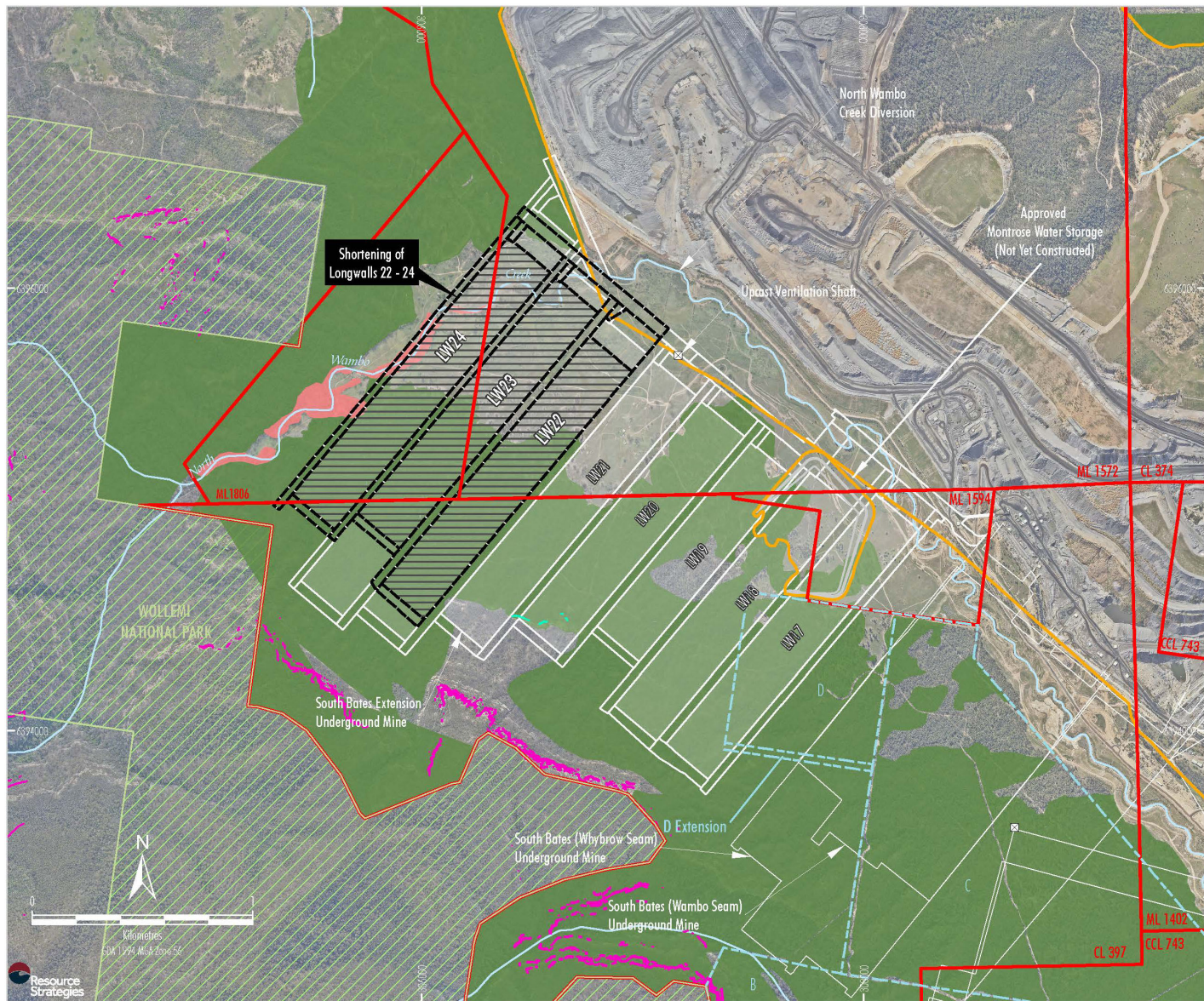


**Peter Jaeger**  
**Manager: Environment & Community**  
**WAMBO COAL PTY LTD**  
[pjaeger@peabodyenergy.com](mailto:pjaeger@peabodyenergy.com)

**ENCLOSURE 1**

**ENVIRONMENTAL FEATURES OVERLYING LONGWALLS 22 to 24**





- LEGEND**
- Mining and Coal Lease Boundary
  - National Park Boundary
  - Existing/Approved Surface Development Area
  - Approved Underground Development
  - Ventilation Shaft
  - Remnant Woodland Enhancement Program (RWEP) Area
  - Shortened Longwalls 21 - 24
  - Features with Subsidence Impact
  - Performance Measures
  - Low Level Cliffs
  - Wollemi National Park Escarpment
  - Other Threatened Ecological Community <sup>1</sup>
  - Central Hunter Valley Eucalypt Forest and Woodland
  - Wollemi National Park

<sup>1</sup> Listed as endangered or critically endangered under the Biodiversity Conservation Act, 2016.

Source: WCPL (2021); NSW Spatial Services (2021); FloraSearch (2017); MSEC (2016)  
 Orthophoto: WCPL (May 2019)