



WAMBO COAL PTY LTD

ABN: 13 000 668 057

100 Melbourne Street
South Brisbane Qld 4101

PMB 1
Singleton NSW 2330
Australia
Tel + 61 (0) 2 6570 2200
Fax+ 61 (0) 2 6570 2290

13 July 2016

Department of Planning and Environment
GPO Box 39
SYDNEY NSW 2001

Attention: Mr Oliver Holm, Executive Director, Resource Assessments and Compliance

Dear Mr Holm

RE: MODIFICATION 12 TO DA 305-7-2003 – REQUEST TO REVISE FIRST WORKINGS LAYOUT

Please find below a request to make a minor reduction to the first workings layout for the South Wambo Underground Mine requested in the application to modify the Wambo Development Project Development Consent DA 305-7-2003 (MOD 12).

Description of the Proposed Change to the Modification

MOD 12 includes a proposed rearrangement of South Wambo Underground Mine, including a realignment and extension/relocation of the approved South Wambo Underground Mine longwall panels and mining of the Woodlands Hill Seam rather than the Bowfield Seam.

A portion of privately-owned land lies above the main headings for the proposed Modification mine layout (in Area 3) presented in the *South Wambo Underground Mine Modification Environmental Assessment* (the EA).

Main headings are designed to be stable and non-subsiding (i.e. cause no movement at the surface). As a result, there would be negligible subsidence impacts on this or any other privately-owned land as a result of the Modification (as shown on Figure 11 of the EA).

Notwithstanding, following further consultation with the landholder and review of the Modification mine layout, WCPL has identified that the first workings layout can be amended to avoid any extraction beneath privately-owned land.

On this basis, WCPL requests that the amended (i.e. reduced) Modification mine layout presented in Enclosure 1 is assessed as part of MOD 12. A comparison of the amended Modification mine layout with the layout assessed in the EA is provided in Enclosure 2.

It is proposed that the number of roadways in the main headings for access to Area 3 is reduced from six roadways to a minimum of three roadways to avoid extraction beneath privately-owned land. WCPL has determined that safe access can be maintained for the extraction of Area 3 with the amended Modification mine layout.

WCPL also requests a corresponding adjustment in the proposed extension to the Development Application Area to remove the privately-owned land from this proposed extension. A revised plan of the proposed extension to the Development Application Area is provided in Enclosure 3, and updated real property descriptions are provided in Enclosure 4.

Environmental Assessment of Revised First Workings Layout

It is considered there would be no material change in environmental impacts associated with the revised first workings layout beyond that already assessed in the EA, because:

- there would be no change in the predicted subsidence effects, impacts or environmental consequences as the proposed change in mine layout is associated with first workings that are stable and non-subsiding;
- the change in the amount of run-of-mine coal would be negligible (approximately 0.0002 million tonnes); and
- there would be negligible change in groundwater impacts, and no increase in impacts, as the area of open roadway would reduce as a result of the proposed change.

Please do not hesitate to contact the undersigned should you have any queries.

Yours faithfully



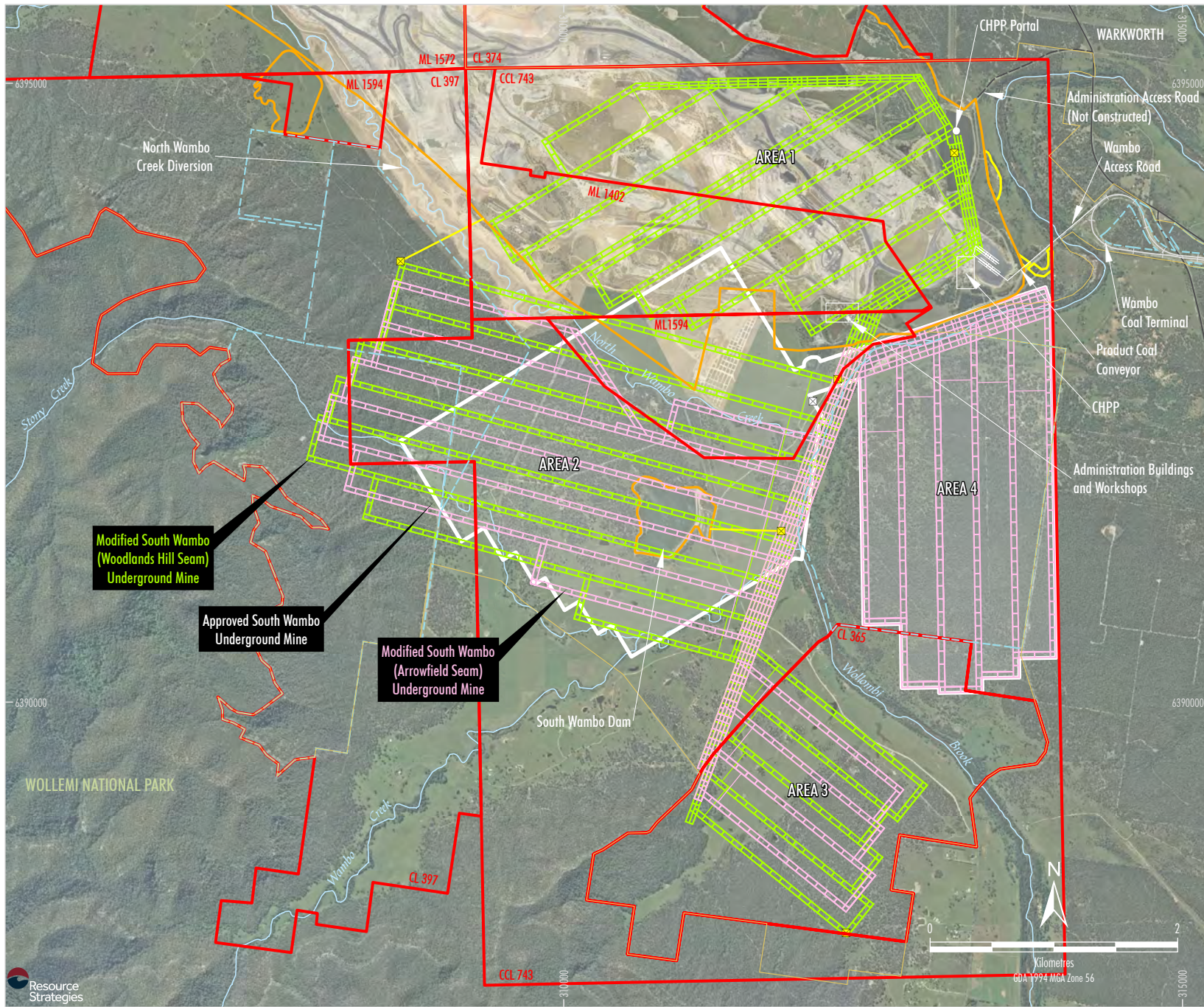
Micheal Alexander
Director Projects and Portfolio Management (NSW)
PEABODY ENERGY AUSTRALIA PTY LIMITED

Enclosures (4)

cc: Mr Howard Reed, Director, Resource Assessments, Department of Planning & Environment.

ENCLOSURE 1

AMENDED MODIFICATION MINE LAYOUT



- LEGEND**
- Mining and Coal Lease Boundary
 - WCPL Owned Land
 - Existing/Approved Surface Development Area
 - Modified Surface Development Area
 - Approved South Wambo Underground Mine Development
 - - - Modified South Wambo (Woodlands Hill Seam) Underground Mine
 - - - Modified South Wambo (Arrowfield Seam) Underground Mine
 - ⊠ Approved Ventilation Shaft
 - ⊠ Modified Ventilation Shaft
 - - - Remnant Woodland Enhancement Program (RWEP) Area
- Source: Department of Lands (July 2009); WCPL (2016); WCPL Orthophoto (Apr-Oct 2013);

Modified South Wambo (Woodlands Hill Seam) Underground Mine

Approved South Wambo Underground Mine

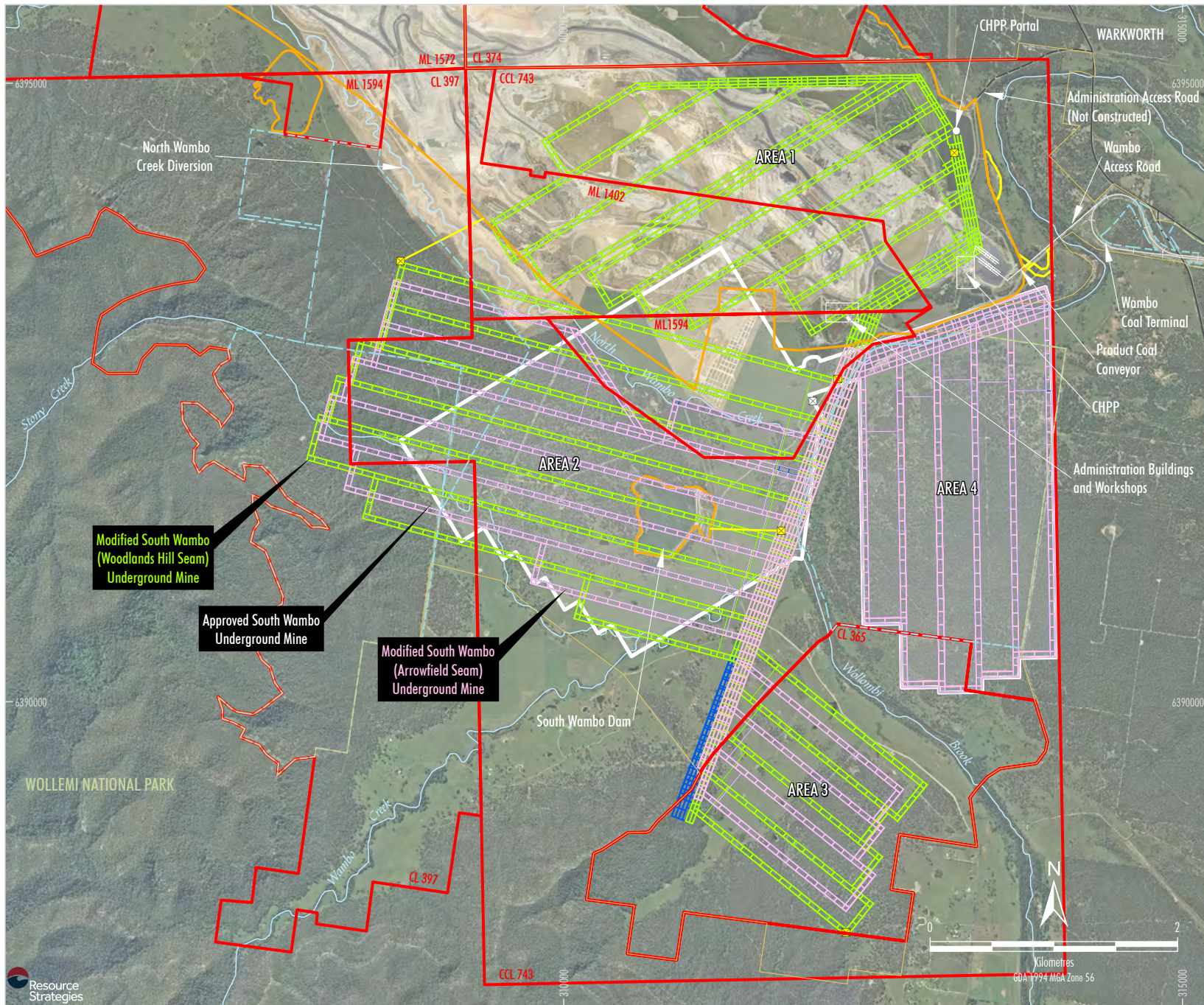
Modified South Wambo (Arrowfield Seam) Underground Mine



WAMBO COAL MINE
Amended Modification
Mine Layout

ENCLOSURE 2

COMPARISON OF AMENDED MODIFICATION MINE LAYOUT WITH
THE EA MODIFICATION MINE LAYOUT



- LEGEND**
- Mining and Coal Lease Boundary
 - WCPL Owned Land
 - Existing/Approved Surface Development Area
 - Modified Surface Development Area
 - Approved South Wambo Underground Mine Development (Not Constructed)
 - Modified South Wambo (Woodlands Hill Seam) Underground Mine
 - Modified South Wambo (Arrowfield Seam) Underground Mine
 - First Workings no Longer Proposed
 - ⊠ Approved Ventilation Shaft
 - ⊞ Modified Ventilation Shaft
 - Remnant Woodland Enhancement Program (RWEF) Area

Source: Department of Lands (July 2009); WCPL (2016); WCPL Orthophoto (Apr-Oct 2013);

Modified South Wambo (Woodlands Hill Seam) Underground Mine

Approved South Wambo Underground Mine

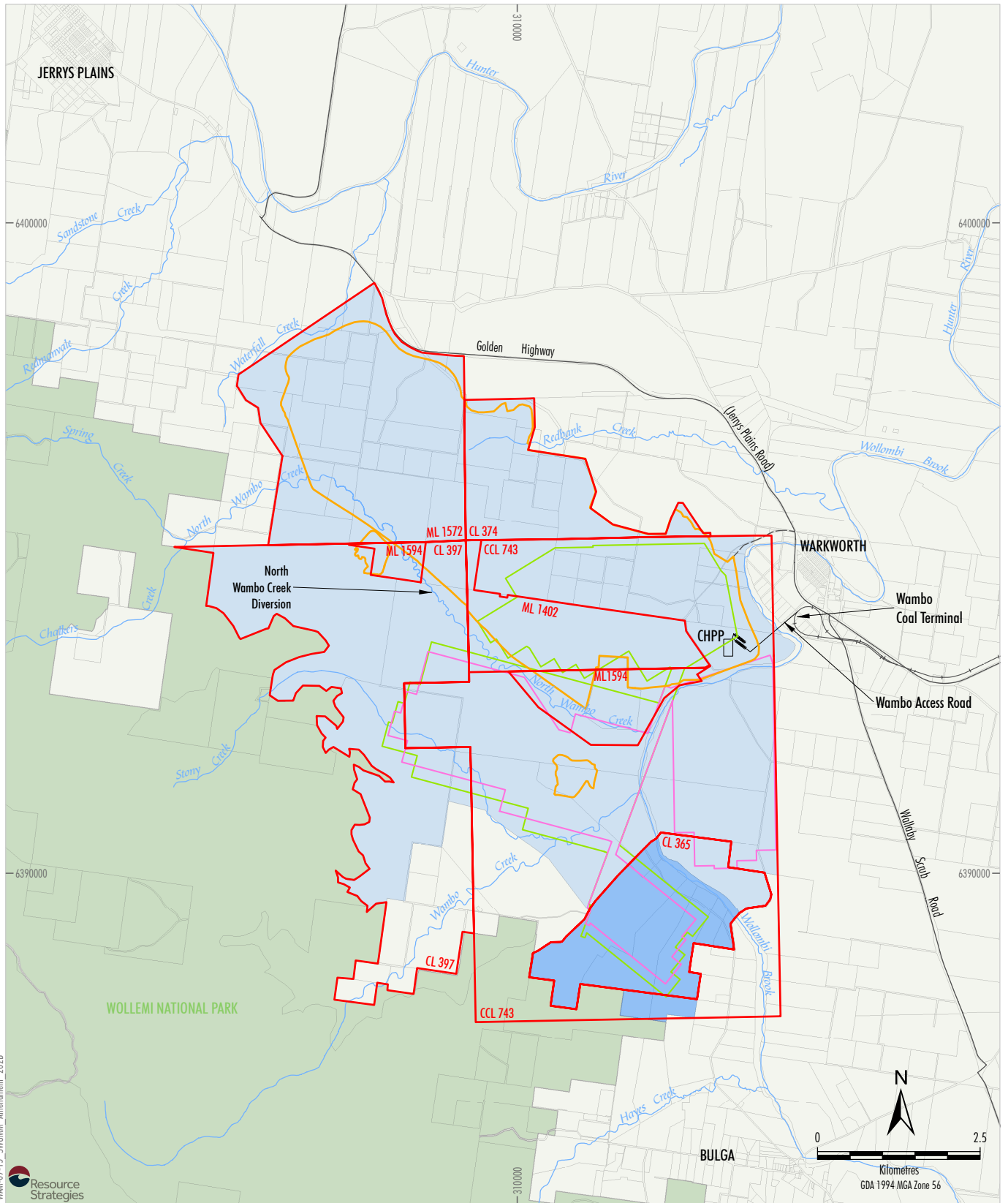
Modified South Wambo (Arrowfield Seam) Underground Mine



WAMBO COAL MINE
Amended Modification Mine Layout

ENCLOSURE 3

UPDATE TO PROPOSED EXTENSION TO
DEVELOPMENT APPLICATION AREA



WMA-09-15 SHUMAM Amendment 2028



- LEGEND**
- Mining and Coal Lease Boundary
 - Existing/Approved Surface Development Area
 - Modified South Wambo (Woodlands Hill Seam) Underground Mine
 - Modified South Wambo (Arrowfield Seam) Underground Mine
 - DA 305-7-2003 Development Application Area
 - Proposed Extension to the Development Application Area

Source: Department of Lands (July 2009); WCPL (2015); WCPL (2003)



W A M B O C O A L M I N E
Amended Development Application Area

ENCLOSURE 4

REVISED REAL PROPERTY DESCRIPTIONS

DA 305-7-2003 DEVELOPMENT APPLICATION AREA

Lot Number	Deposited Plan Number	Tenure Type
1	DP110084	Freehold
1	DP1089682	Freehold
1	DP114970	Freehold
1	DP709722	Freehold
1	DP720705	Freehold
1	DP241316	Freehold
1	DP616303	Freehold
1	DP1177768	Freehold
1	DP1174490	Local Government Authority
100	DP753792	Freehold
101	DP753792	Freehold
103	DP753792	Freehold
104	DP753792	Freehold
109	DP753792	Freehold
110	DP753792	Freehold
111	DP753792	Freehold
112	DP753792	Freehold
113	DP753817	Freehold
118	DP753792	Freehold
129	DP755267	Freehold
131	DP1089157	Freehold
160	DP753817	Freehold
161	DP753817	Freehold
170	DP823775	Crown
175	DP823775	Crown
18	DP753817	Freehold
2	DP1085145	Freehold
2	DP110084	Freehold
2	DP709722	Freehold
2	DP616303	Freehold
2	DP617852	Freehold
2	DP720705	Freehold
2	DP1174490	Freehold
208	DP753817	Freehold
22	DP753817	Freehold
220	DP1135537	Freehold
23	DP3030	Freehold
3	DP720705	Freehold
3	DP1177768	Freehold
3	DP1085145	Freehold
38	DP753792	Freehold
39	DP753792	Freehold

Lot Number	Deposited Plan Number	Tenure Type
4	DP1085145	Freehold
4	DP542226	Freehold
4	DP720705	Freehold
45	DP753792	Freehold
46	DP753792	Freehold
49	DP753792	Freehold
5	DP542226	Freehold
5	DP1085145	Freehold
50	DP753792	Freehold
51	DP753792	Freehold
52	DP753792	Freehold
55	DP753792	Freehold
57	DP1074788	Freehold
58	DP753792	Freehold
60	DP753792	Freehold
61	DP753792	Freehold
62	DP753792	Freehold
63	DP753792	Freehold
64	DP753792	Freehold
66	DP753817	Freehold
67	DP753817	Freehold
7	DP3030	Freehold
71	DP753817	Freehold
79	DP1074787	Freehold
79	DP753821	Freehold
82	DP548749	Freehold
83	DP548749	Freehold
92	DP755267	Freehold
95	DP753792	Freehold
A	DP33149	Freehold
B	DP33149	Freehold
C	DP33149	Freehold

Roads

1. Wambo Mine Road.
2. Road within Lot 1 DP 616303.
3. Road bounded by Lot 220 DP1135537, Lot 83 DP548749, Lot 23 DP3030, Lot 129 DP 755267, Lot 1 DP110084, Lot 1089682 and Lot 1 DP114970.
4. Bounded by Lots 92 & 129 DP 755267.
5. Bounded by Lots 4 & 5 DP542226, Lot 2 DP616303, Lots 2 & 3 DP720705 and Lot 3 1177768.
6. Bounded by Lot 2 DP616303, Lot 5 DP542226, Lot 4 DP720705 and Lots 45 & 46 DP753792.
7. Bounded by Lot 1 DP1174490, Lots 2, 3 & 4 DP1085145 and Lot 175 DP823775.
8. Bounded by Lots 62, 63, 64, 95 & 118 DP753792, Lot 1 DP 1177768 and Lot 2 DP1174490.
9. Bounded by Lot 79 DP1074487, Lot 170 DP823775, Lots 49-51, 58, 118 DP753792, Lot 2 DP1085145 and Lot 2 DP1174490.

10. Bounded by Lot 79 DP1074487, Lots 18, 160 & 161 DP753817 and Lots 49, 50 & 52 DP753792.
11. Bounded by Lot A DP33149, Lots 22, 66 & 71 DP753817 and Lot 2 DP 1174490.
12. Adjoining to the East and North of Lot 79 DP753821.

Wollombi Brook

1. Bounded by Lot 220 DP1135537, Lot 83 DP548749, Lot 1 DP110084, Lot 1 DP241316 and Lot 7 DP3030.

PROPOSED EXTENSION TO THE DEVELOPMENT APPLICATION AREA

Lot Number	Deposited Plan Number	Tenure Type
1	DP732501	Freehold
2	DP732501	Freehold
3	DP732501	Freehold
4	DP732501	Freehold
5	DP732501	Freehold
6	DP732501	Freehold

Roads

1. Wambo Road.

Wollombi Brook

1. Bounded by Lot 1 DP1089682 and Lots 1, 2, 3, 4, 5 & 6 DP732501.