


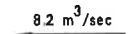


## Post Development 1 in 100 Yr Flow Paths

### LEGEND:

-  EXISTING STORMWATER LINES GREATER OR EQUAL TO 600 DIA.
-  EXTENT OF 1 IN 100 YEAR FLOODING
-  EXTENT OF NEW PAVEMENT
-  8.2 m<sup>3</sup>/sec 1 IN 100 YEAR FLOW

**Richmond+Ross**

in association with  
the former practice of **McBean & Crisp**

CONSULTING ENGINEERS

38 WILLOUGHBY ROAD,  
CROWS NEST, NSW 2065  
TEL : (02) 9490 9600  
FAX : (02) 9438 1224  
JOB N: 020083

PTY LIMITED  
ABN 34 001 453 436

PTY LIMITED

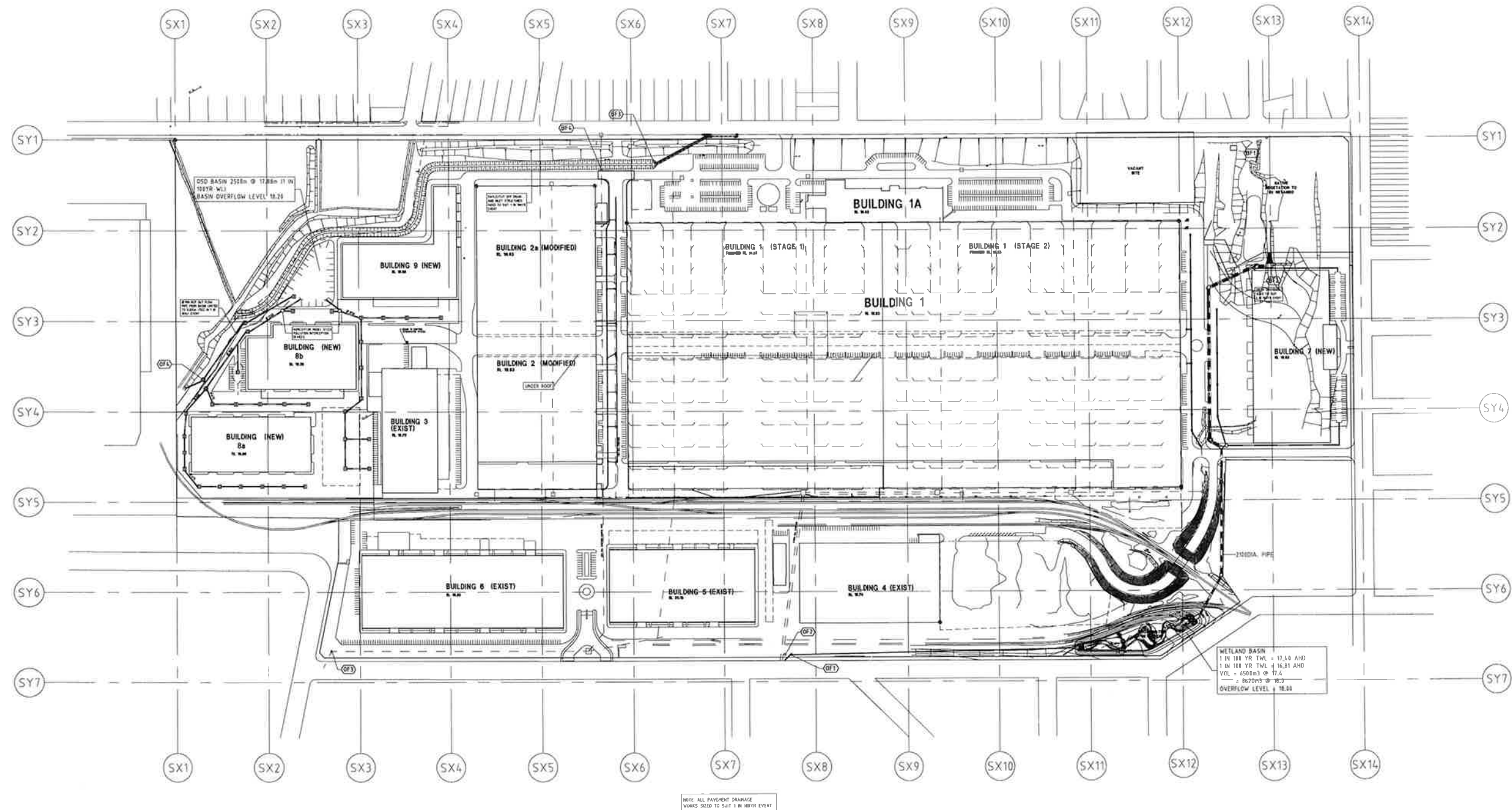


The Association of  
Consulting Engineers  
Australia

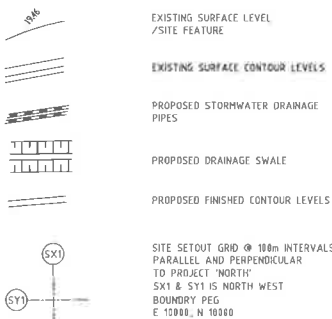
**YENNORA DISTRIBUTION PARK**  
1 IN 100 YR FLOW PATHS  
AND FLOOD EXTENTS

1:4000 SCALE

MARCH 2003



LEGEND



ENVIRONMENTAL MANAGEMENT PLAN NOTES

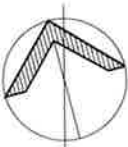
- 1- THIS PLAN FORMS PART OF THE ENVIRONMENTAL MANAGEMENT PLANS FOR YENNORA DISTRIBUTION PARK. IT DEFINE THE STORMWATER WORKS PROPOSED TO COMPLY WITH THE EMP/SMP REQUIREMENTS. IT IS NOT SUITABLE FOR CONSTRUCTION PURPOSES. IT IS INTENDED AS A GUIDE FOR THE FUTURE DEVELOPMENT OF THIS SITE, WITH RESPECT TO STORMWATER AND ENVIRONMENTAL PROTECTION.
- 2- WORKS SHOWN ARE INDICATIVE ONLY AND SUBJECT TO DETAIL DESIGN.
- 3-REFER TO INDIVIDUAL BUILDING DRAWINGS SMP#2-SMP#8 FOR DETAILS OF WORKS.

STORMWATER MONITORING NOTES:

- 1- STORMWATER MONITORING LOCATIONS FOR BASELINE ASSESSMENT ARE DENOTED (BF)
- 2- STORMWATER MONITORING LOCATIONS FOR OUTFLOW QUALITY ARE DENOTED (OF)
- 3- POINTS MARKED (OF) TO BE FITTED WITH DEPTH SWITCHED ALARMS CONNECTED BACK TO THE SITE OPERATORS, PROPERTY SUPERVISORS OFFICE. ALARM TO BE ACTIVATED WHEN OUTFLOW IS AT 1/2 PIPE DEPTH.



**KEY PLAN**  
DIMENSIONS MUST NOT BE SCALED FROM DRAWINGS.  
ALL DIMENSIONS TO BE CONFIRMED ON SITE PRIOR TO THE COMMENCEMENT OF WORK.  
EXISTING BUILDING AS AT JUNE 2002  
REFER BELOW FOR MORE AMENDMENTS



A 21-03-03 INITIAL ISSUE  
REV DATE AMENDMENT SIGNED  
CLIENT  
**Stockland**  
Stockland Corporation Limited  
157 Liverpool Street Sydney NSW 2000  
Telephone (02) 9321 1551 Facsimile (02) 9321 1947

PROJECT  
**YENNORA  
DISTRIBUTION PARK  
LOFTUS ROAD, YENNORA**

STORMWATER CONSULTANTS  
**Richmond+Ross**  
CONSULTING ENGINEERS  
38 WILLOUGHBY ROAD,  
CHERRY HILL NSW 2085  
TEL: (02) 8430 9800  
FAX: (02) 8438 1224

ARCHITECTS  
**MMA ARCHITECTS**  
Level 4, 8 Help Street Telephone (02) 9495 8400  
PO Box 1212 Facsimile (02) 9495 8444  
Cherry Hill NSW 2087 mma@mva.com.au

PROJECT MANAGERS  
**INCOLL MANAGEMENT**  
225 Miller Street  
North Sydney NSW 2080  
Tel: (02) 9957 5510 Fax: (02) 9959 3975

PLANNERS  
**URSIS Pty. Ltd**  
Level 5, 20 Alfred Street  
Millers Point NSW 2061  
Tel: (02) 9956 7515 Fax: (02) 9956 7514

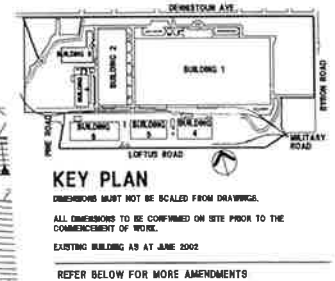
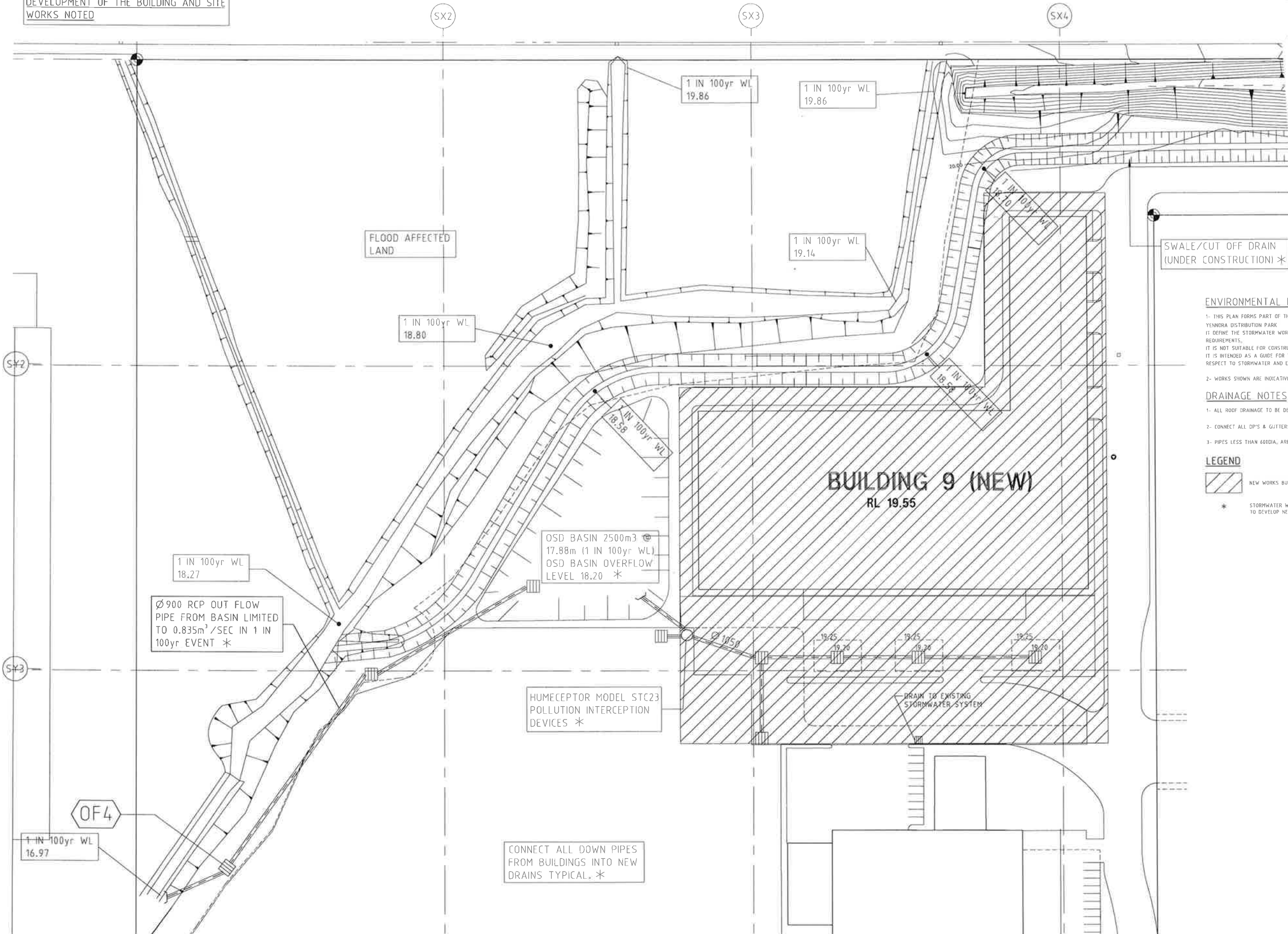
TITLE  
**ENVIRONMENTAL  
MANAGEMENT PLAN  
STORMWATER MASTER PLAN**

DATE 7/2002	PROJECT No. 020083	STATUS P
SCALE 1:2000 (B1)		
DRAWN RM	DWG No.	REV No.
CHECKED		
APPROVED	SMP01	A

SMP ISSUE  
NOT FOR CONSTRUCTION



THIS DRAWING DEFINES THE ESSENTIAL  
STORMWATER WORKS REQUIRED TO BE  
CONSTRUCTED TO ALLOW FOR THE  
DEVELOPMENT OF THE BUILDING AND SITE  
WORKS NOTED



ENVIRONMENTAL MANAGEMENT PLAN NOTES

- 1- THIS PLAN FORMS PART OF THE ENVIRONMENTAL MANAGEMENT PLANS FOR YENNORA DISTRIBUTION PARK. IT DEFINE THE STORMWATER WORKS PROPOSED TO COMPLY WITH THE EMP/SPM REQUIREMENTS. IT IS NOT SUITABLE FOR CONSTRUCTION PURPOSES. IT IS INTENDED AS A GUIDE FOR THE FUTURE DEVELOPMENT OF THIS SITE, WITH RESPECT TO STORMWATER AND ENVIRONMENTAL PROTECTION.
- 2- WORKS SHOWN ARE INDICATIVE ONLY AND SUBJECT TO DETAIL DESIGN.

DRAINAGE NOTES

- 1- ALL ROOF DRAINAGE TO BE DESIGNED FOR 1 IN 100 YR FLOWS.
- 2- CONNECT ALL D.P.'S & GUTTERS INTO IN GROUND STORMWATER SYSTEM.
- 3- PIPES LESS THAN 600DIA, ARE NOT SHOWN FOR CLARITY

LEGEND

- NEW WORKS BUILDING AND PAVEMENTS
- STORMWATER WORKS REQUIRED TO DEVELOP NEW WORKS

A 21-03-03 INITIAL ISSUE

REV	DATE	AMENDMENT	SIGNED
1	21-03-03	INITIAL ISSUE	

CLIENT  
  
Stockland Corporation Limited  
167 Liverpool Street  
Sydney NSW 2000  
Telephone (02) 9321 1551 Facsimile (02) 9321 1557

PROJECT  
**YENNORA  
DISTRIBUTION PARK  
LOFTUS ROAD, YENNORA**

STORMWATER CONSULTANTS  
**Richmond+Ross**  
CONSULTING ENGINEERS  
24 WILLOUGHBY ROAD  
CHERRY HILL NSW 2006  
TEL (02) 9450 9800  
FAX (02) 9438 1224

ARCHITECTS  
**MBA ARCHITECTS**  
Level 4, 8 Help Street Telephone (02) 9485 0400  
PO Box 1012 Facsimile (02) 9485 0444  
Cherry Hill NSW 2007 [mbsa@mba.com.au](mailto:mbsa@mba.com.au)

PROJECT MANAGERS  
**INCOLL MANAGEMENT**  
225 Miller Street  
North Sydney NSW 2060  
Tel: (02) 9957 5818 Fax: (02) 9959 3976

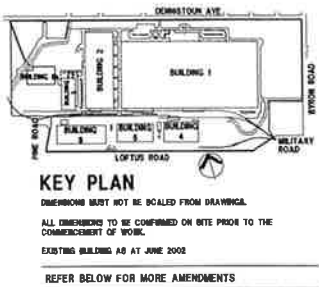
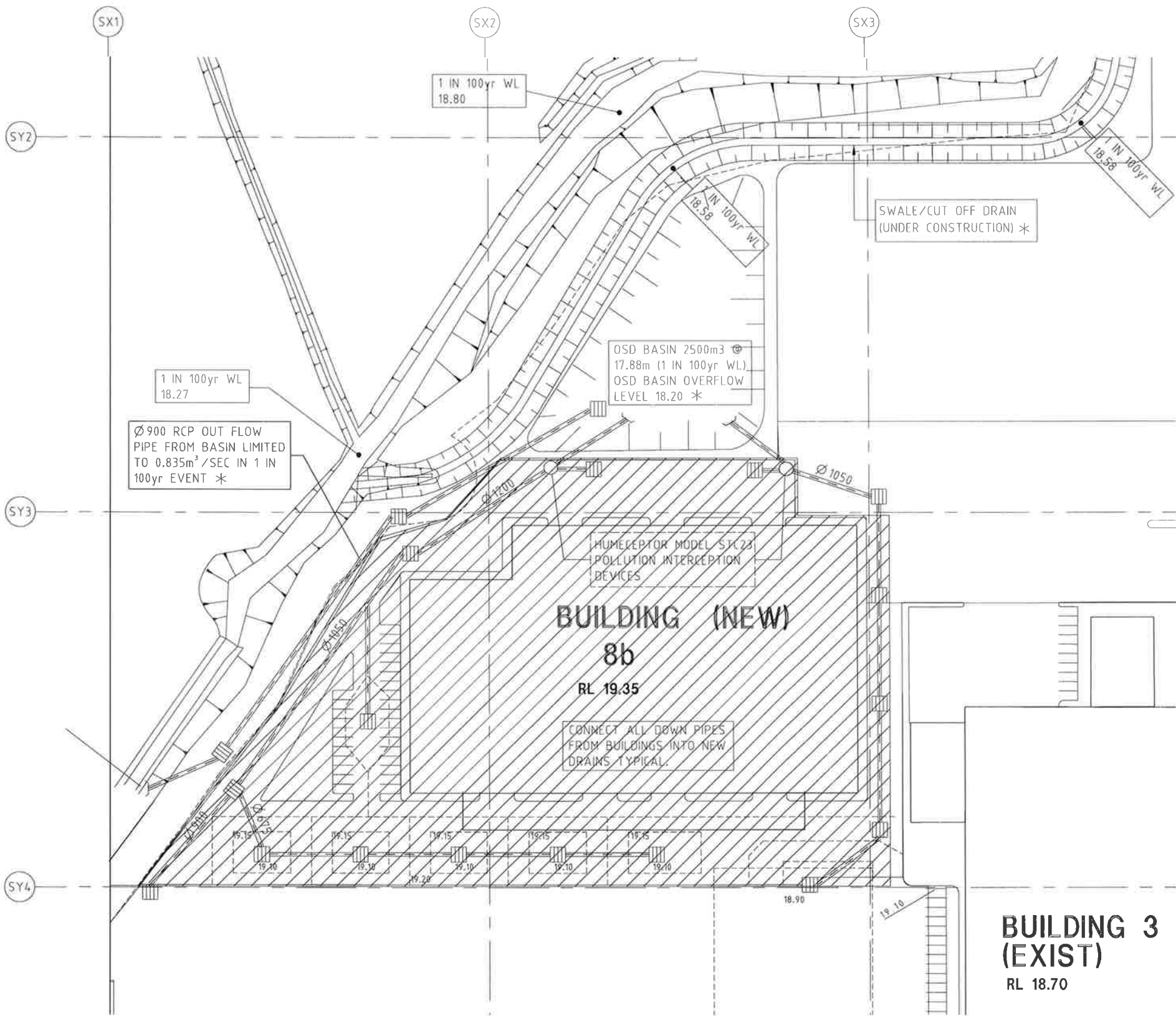
PLANERS  
**URBIS Pty. Ltd.**  
Level 5, 20 Alfred Street  
Milton Park NSW 2001  
Tel: (02) 9958 7515 Fax: (02) 9958 7514

TITLE  
**ESSENTIAL STORMWATER  
WORKS TO DEVELOP  
BUILDING 9**

DATE	22/01/03	PROJECT NO.	020083	STATUS	P
SCALE	1:500	(B1)			
DRAWN	KW				
CHECKED		DWG NO.		REV NO.	
APPROVED			SMP02	A	

SMP ISSUE  
NOT FOR CONSTRUCTION

THIS DRAWING DEFINES THE ESSENTIAL STORMWATER WORKS REQUIRED TO BE CONSTRUCTED TO ALLOW FOR THE DEVELOPMENT OF THE BUILDING AND SITE WORKS NOTED



ENVIRONMENTAL MANAGEMENT PLAN NOTES

1- THIS PLAN FORMS PART OF THE ENVIRONMENTAL MANAGEMENT PLANS FOR YENNORA DISTRIBUTION PARK. IT DEFINE THE STORMWATER WORKS PROPOSED TO COMPLY WITH THE EMP/SMP REQUIREMENTS. IT IS NOT SUITABLE FOR CONSTRUCTION PURPOSES. IT IS INTENDED AS A GUIDE FOR THE FUTURE DEVELOPMENT OF THIS SITE. WITH RESPECT TO STORMWATER AND ENVIRONMENTAL PROTECTION.

2- WORKS SHOWN ARE INDICATIVE ONLY AND SUBJECT TO DETAIL DESIGN.

DRAINAGE NOTES

- 1- ALL ROOF DRAINAGE TO BE DESIGNED FOR 1 IN 100 YR FLOWS.
- 2- CONNECT ALL DP'S & GUTTERS INTO IN GROUND STORMWATER SYSTEM.
- 3- PIPES LESS THAN 680DIA. ARE NOT SHOWN FOR CLARITY

LEGEND

- NEW WORKS BUILDING AND PAVEMENTS
- STORMWATER WORKS REQUIRED TO DEVELOP NEW WORKS

A 21-83-83 INITIAL ISSUE

REV DATE	AMENDMENT	SIGNED

CLIENT

**Stockland** PROPERTY GROUP

Stockland Corporation Limited  
167 Liverpool Street Sydney NSW 2000  
Telephone (02) 9321 1551 Facsimile (02) 9321 8297

PROJECT

**YENNORA  
DISTRIBUTION PARK  
LOFTUS ROAD, YENNORA**

STORMWATER CONSULTANTS

**Richmond+Ross** PTY LIMITED

CONSULTING ENGINEERS  
36 WILLOUGHBY ROAD,  
CHERRY HILL NSW 2186  
TEL : (02) 9440 9500  
FAX : (02) 9438 1234



ARCHITECTS

**MMA ARCHITECTS**

Level 4, 8 Help Street Telephone (02) 9485 8400  
PO Box 1212 Fax (02) 9485 8444  
Cherrywood NSW 2067 [mma@mma.com.au](mailto:mma@mma.com.au)

PROJECT MANAGERS

**INCOLL MANAGEMENT**

225 Miller Street  
North Sydney NSW 2060  
Tel: (02) 9957 5818 Fax: (02) 9950 3975

PLANERS

**URBIS Pty Ltd**

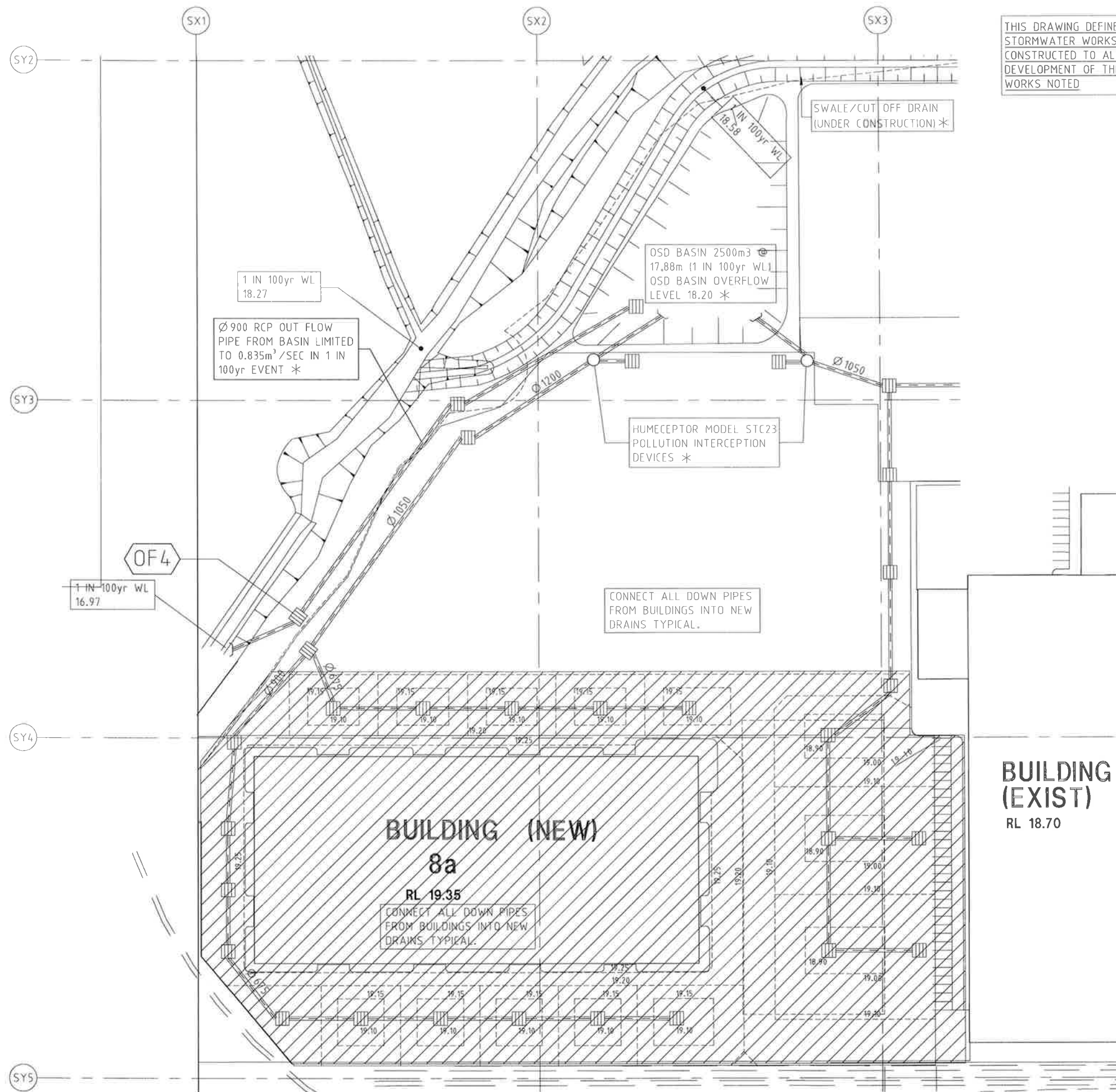
Level 5, 20 Alfred Street  
Milton Point NSW 2061  
Tel: (02) 9958 7515 Fax: (02) 9950 7514

TITLE

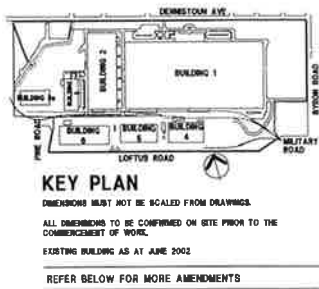
**ESSENTIAL STORMWATER  
WORKS TO DEVELOP  
BUILDING 8b**

DATE	28/06/02	PROJECT No.	020083	STATUS	P
SCALE	1:1000	(S1)			
DRAWN	KM				
CHECKED		CHK No.		REV No.	
APPROVED			SMP03	A	

SMP ISSUE  
NOT FOR CONSTRUCTION



THIS DRAWING DEFINES THE ESSENTIAL STORMWATER WORKS REQUIRED TO BE CONSTRUCTED TO ALLOW FOR THE DEVELOPMENT OF THE BUILDING AND SITE WORKS NOTED



ENVIRONMENTAL MANAGEMENT PLAN NOTES

1- THIS PLAN FORMS PART OF THE ENVIRONMENTAL MANAGEMENT PLANS FOR YENNORA DISTRIBUTION PARK. IT DEFINE THE STORMWATER WORKS PROPOSED TO COMPLY WITH THE EMP/SMP REQUIREMENTS. IT IS NOT SUITABLE FOR CONSTRUCTION PURPOSES, IT IS INTENDED AS A GUIDE FOR THE FUTURE DEVELOPMENT OF THIS SITE, WITH RESPECT TO STORMWATER AND ENVIRONMENTAL PROTECTION.

2- WORKS SHOWN ARE INDICATIVE ONLY AND SUBJECT TO DETAIL DESIGN.

DRAINAGE NOTES

- 1- ALL ROOF DRAINAGE TO BE DESIGNED FOR 1 IN 100 YR FLOWS.
- 2- CONNECT ALL DP'S & GUTTERS INTO IN GROUND STORMWATER SYSTEM.
- 3- PIPES LESS THAN 6000A, ARE NOT SHOWN FOR CLARITY.

LEGEND

- NEW WORKS BUILDING AND PAVEMENTS
- STORMWATER WORKS REQUIRED TO DEVELOP NEW WORKS

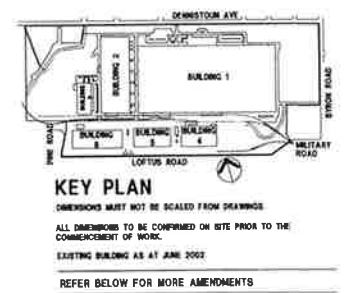
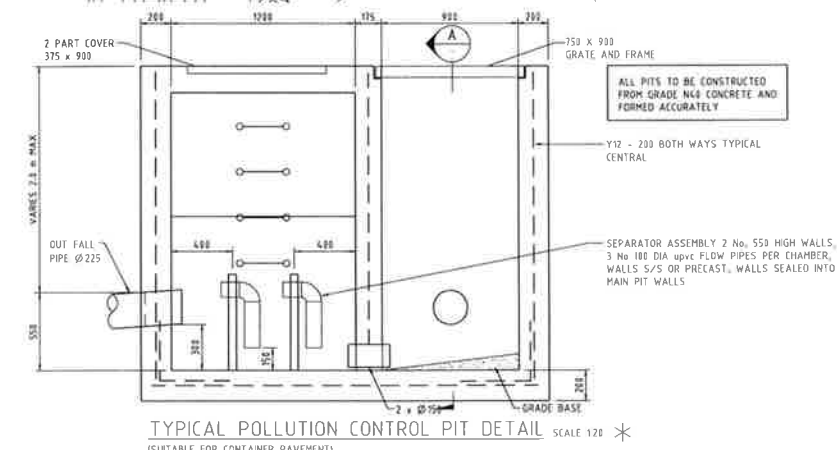
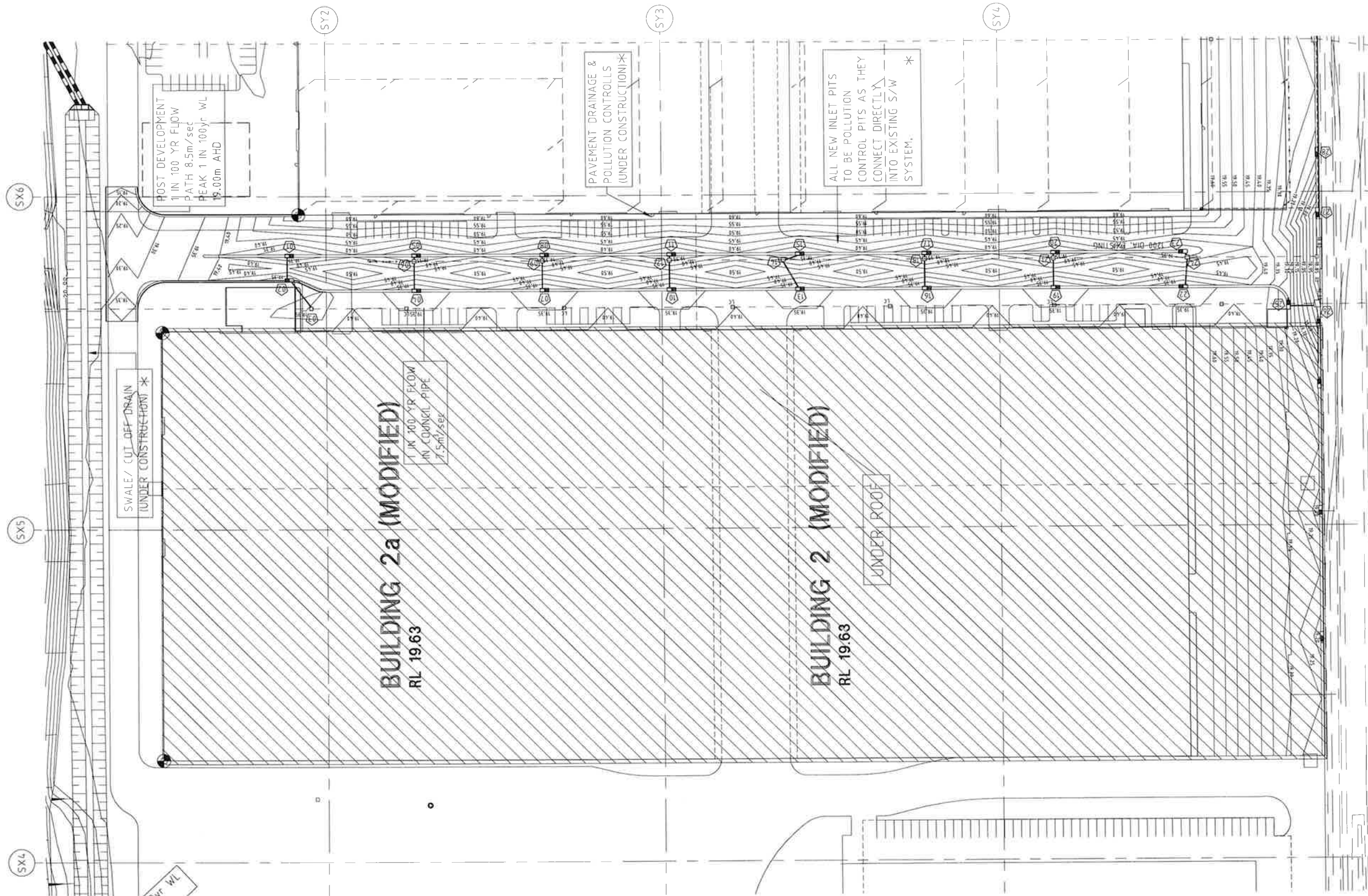
BUILDING (EXIST)  
RL 18.70

BUILDING (NEW)  
8a  
RL 19.35  
CONNECT ALL DOWN PIPES FROM BUILDINGS INTO NEW DRAINS TYPICAL.

SMP ISSUE  
NOT FOR CONSTRUCTION

A 21-03-03 INITIAL ISSUE		
REV DATE	AMENDMENT	SIGNED
CLIENT		
Stockland Corporation Limited 151 Liverpool Street Sydney NSW 2000 Telephone (02) 8221 5551 Facsimile (02) 8221 5597		
PROJECT		
YENNORA DISTRIBUTION PARK LOFTUS ROAD, YENNORA		
STORMWATER CONSULTANTS		
RICHMOND+ROSS PTY LIMITED		
ADE 34 031 485 426 CONSULTING ENGINEERS 38 WILLOUGHBY ROAD CHERRY HILL NSW 2051 TEL (02) 9450 9602 FAX (02) 9438 1234		
ARCHITECTS		
MWA ARCHITECTS		
Level 4, 8 Help Street Telephone (02) 9485 8400 PO Box 1212 Facsimile (02) 9485 8444 Chalawood NSW 2087 mwaa@mwa.com.au		
PROJECT MANAGERS		
INCOLL MANAGEMENT		
225 Miller Street North Sydney NSW 2060 Tel: (02) 9957 5818 Fax: (02) 9959 3976		
PLANERS		
URBS Pty Ltd		
Level 5, 20 Alfred Street Milton Park NSW 2091 Tel: (02) 9456 7515 Fax: (02) 9456 7514		
TITLE		
ESSENTIAL STORMWATER WORKS TO DEVELOP BUILDING 8a		
DATE	26/06/02	PROJECT No. 020083
SCALE	1:1000	STATUS P
DRAWN	NSI	REV No.
CHECKED		DWG No. SMP04
APPROVED		STATUS A





THIS DRAWING DEFINES THE ESSENTIAL STORMWATER WORKS REQUIRED TO BE CONSTRUCTED TO ALLOW FOR THE DEVELOPMENT OF THE BUILDING AND SITE WORKS NOTED

ENVIRONMENTAL MANAGEMENT PLAN NOTES

- 1- THIS PLAN FORMS PART OF THE ENVIRONMENTAL MANAGEMENT PLANS FOR YENNORA DISTRIBUTION PARK. IT DURING THE STORMWATER WORKS PROPOSED TO COMPLY WITH THE EMP/SMP REQUIREMENTS. IT IS NOT SUITABLE FOR CONSTRUCTION PURPOSES. IT IS INTENDED AS A GUIDE FOR THE FUTURE DEVELOPMENT OF THIS SITE, WITH RESPECT TO STORMWATER AND ENVIRONMENTAL PROTECTION.
- 2- WORKS SHOWN ARE INDICATIVE ONLY AND SUBJECT TO DETAIL DESIGN.

DRAINAGE NOTES

- 1- ALL ROOF DRAINAGE TO BE DESIGNED FOR 1 IN 100 YR FLOWS.
- 2- CONNECT ALL DP'S & GUTTERS INTO IN GROUND STORMWATER SYSTEM.
- 3- PIPES LESS THAN 600DIA. ARE NOT SHOWN FOR CLARITY

LEGEND

NEW WORKS BUILDING AND PAVEMENTS

\* STORMWATER WORKS REQUIRED TO DEVELOP NEW WORKS

REV DATE	AMENDMENT	SIGNED

CLIENT

Stockland Corporation Limited  
157 Liverpool Street Sydney NSW 2000  
Telephone (02) 9221 5551 Facsimile (02) 9221 5987

PROJECT

**YENNORA DISTRIBUTION PARK**  
**LOTFUS ROAD, YENNORA**

STORMWATER CONSULTANTS

**Richmond+Ross** PTY LIMITED  
CONSULTING ENGINEERS  
24 MILLIKEN ROAD  
CRENSHAW NSW 2005  
TEL (02) 9490 9890  
FAX (02) 9428 1724

ARCHITECTS

**BRNA ARCHITECTS**  
Level 4, 8 Help Street Telephone (02) 9495 6400  
PO Box 1252 Facsimile (02) 9495 5444  
Cherrywood NSW 2007 [mba@brna.com.au](mailto:mba@brna.com.au)

PROJECT MANAGERS

**RICOLL MANAGEMENT**  
228 Millway Street  
North Sydney NSW 2060  
Tel: (02) 9957 5818 Fax: (02) 9958 3875

PLANNERS

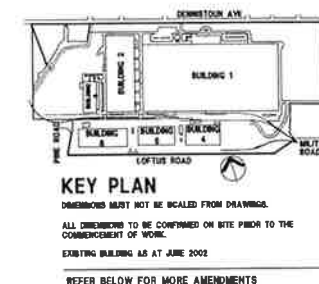
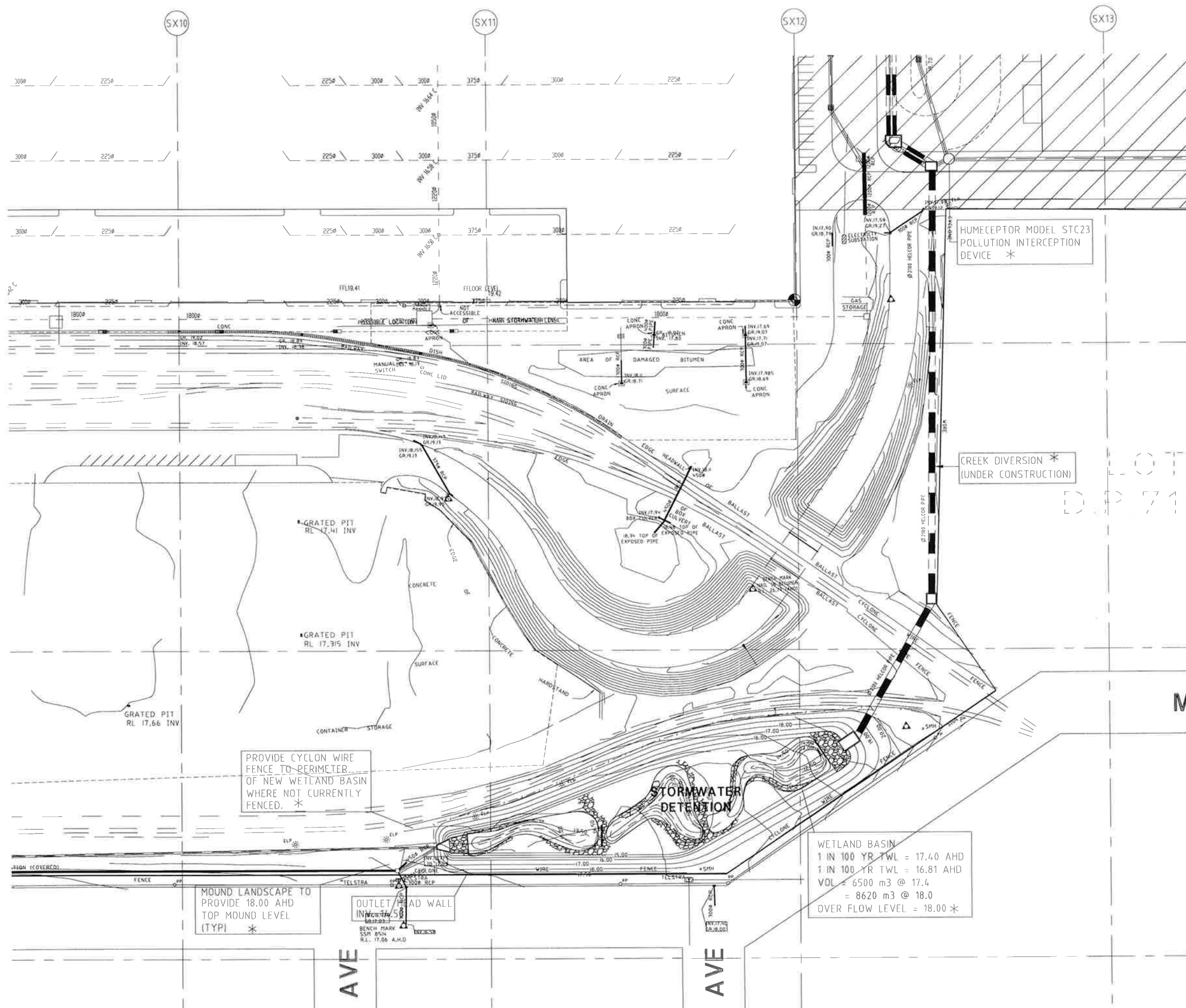
**URBS Pty Ltd**  
Level 5, 20 Alfred Street  
Millson Point NSW 2091  
Tel: (02) 9958 7515 Fax: (02) 9958 7514

TITLE

**ESSENTIAL STORMWATER WORKS TO DEVELOP BUILDING 2 & 2a**

DATE	28/08/02	PROJECT No.	020083	REVISION	P
SCALE	1:1000	(B1)			
DRAWN	101				
CHECKED		DWG No.		REV No.	
APPROVED			<b>SMP05</b>	<b>A</b>	

SMP ISSUE  
NOT FOR CONSTRUCTION



THIS DRAWING DEFINES THE ESSENTIAL STORMWATER WORKS REQUIRED TO BE CONSTRUCTED TO ALLOW FOR THE DEVELOPMENT OF THE BUILDING AND SITE WORKS NOTED

ENVIRONMENTAL MANAGEMENT PLAN NOTES

1- THIS PLAN FORMS PART OF THE ENVIRONMENTAL MANAGEMENT PLANS FOR YENNORA DISTRIBUTION PARK. IT DEFINES THE STORMWATER WORKS PROPOSED TO COMPLY WITH THE EMP/SHR REQUIREMENTS. IT IS NOT SUITABLE FOR CONSTRUCTION PURPOSES. IT IS INTENDED AS A GUIDE FOR THE FUTURE DEVELOPMENT OF THIS SITE, WITH RESPECT TO STORMWATER AND ENVIRONMENTAL PROTECTION.

2- WORKS SHOWN ARE INDICATIVE ONLY AND SUBJECT TO DETAIL DESIGN.

DRAINAGE NOTES

1- ALL ROOF DRAINAGE TO BE DESIGNED FOR 1 IN 100 YR FLOWS.

2- CONNECT ALL DIPS & GUTTERS INTO IN GROUND STORMWATER SYSTEM.

3- PIPES LESS THAN 400DIA. ARE NOT SHOWN FOR CLARITY

LEGEND

NEW WORKS BUILDING AND PAVEMENTS

\* STORMWATER WORKS REQUIRED TO DEVELOP NEW WORKS

A 21-03-03 INITIAL ISSUE

REV DATE AMENDMENT SIGNED

CLIENT  
**Stockland**  
 Stockland Corporation Limited  
 97 Liverpool Street Sydney NSW 2000  
 Telephone (02) 9321 9551 Facsimile (02) 9321 1087

PROJECT  
**YENNORA DISTRIBUTION PARK LOFTUS ROAD, YENNORA**

STORMWATER CONSULTANTS  
**Richmond + Ross**  
 30 WILLOUGHBY ROAD, CHERRY HILL NSW 2126  
 TEL: (02) 9400 8800 FAX: (02) 9429 1224

ARCHITECTS  
**MMA ARCHITECTS**  
 Level 4, 8 Help Street Telephone (02) 9495 6400  
 PO Box 1212, Facsimile (02) 9495 6444  
 Chalmers NSW 2007 mma@mna.com.au

PROJECT MANAGERS  
**INCOLL MANAGEMENT**  
 225 Miller Street North Sydney NSW 2060  
 Tel: (02) 9597 5816 Fax: (02) 9595 3875

PLANNERS  
**URBIS Pty. Ltd.**  
 Level 5, 20 Alfred Street Milson Point NSW 2001  
 Tel: (02) 9556 7515 Fax: (02) 9556 7514

TITLE  
**ESSENTIAL STORMWATER WORKS TO DEVELOP BUILDING 7**

DATE	26/06/02	PROJECT No.	020083	STATUS	P
SCALE	1:200	(BY)			
DRAWN	104				
CHECKED		DATE		REV No.	
APPROVED			SMP08	A	

SMP ISSUE  
 NOT FOR CONSTRUCTION