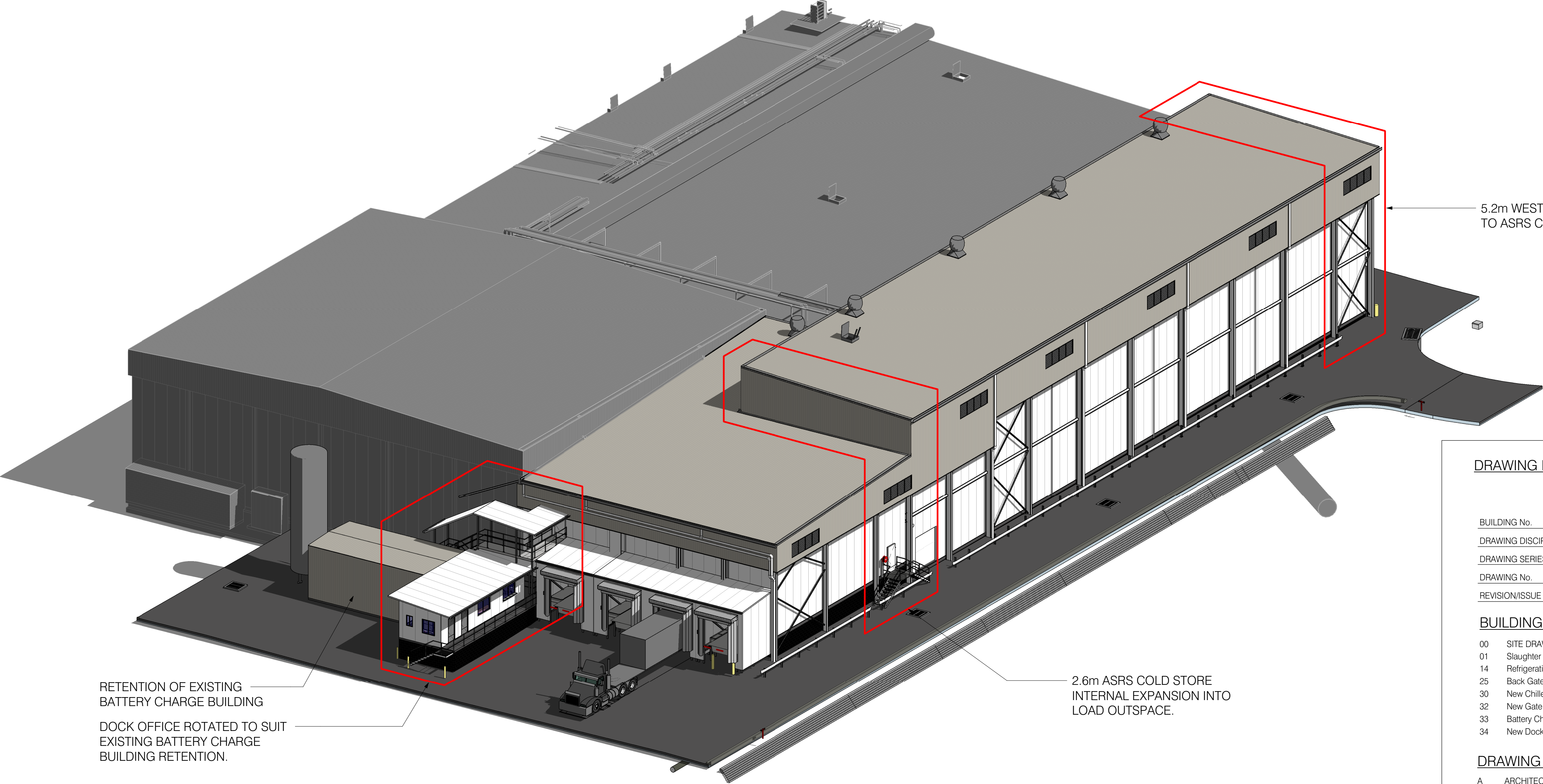


TEYS AUSTRALIA ABATTOIR UPGRADES DAMPIER ST, WAGGA WAGGA, NSW



5.2m WESTERN EXTENSION
TO ASRS COLD STORE

2.6m ASRS COLD STORE
INTERNAL EXPANSION INTO
LOAD OUTSPACE.

RETENTION OF EXISTING
BATTERY CHARGE BUILDING

DOCK OFFICE ROTATED TO SUIT
EXISTING BATTERY CHARGE
BUILDING RETENTION.

DRAWING NUMBER LEGEND

01	A	1 01	-1
BUILDING No.			
DRAWING DISCIPLINE			
DRAWING SERIES			
DRAWING No.			
REVISION/ISSUE			

BUILDING No.

- 00 SITE DRAWINGS
- 01 Slaughter floor, Offal rooms & TAFS Drawings
- 14 Refrigeration switch room extensions
- 25 Back Gatehouse
- 30 New Chilled Carton Storage (ASRS) Drawings
- 32 New Gate House Drawings
- 33 Battery Charge Drawings
- 34 New Dock Office Drawings

DRAWING DISCIPLINE

- A ARCHITECTURAL
- C CIVIL
- D DEMOLITION
- E ELECTRICAL
- F FIRE
- H HYDRAULICS
- K ARCHITECTURAL SKETCH
- M MECHANICAL
- P PROCESS SKETCH
- Q EQUIPMENT
- R REFRIGERATION
- S STRUCTURAL
- X EXISTING

DRAWING SERIES

- 000 SITE & SITEWORKS
- 100 PLANS
- 200 ELEVATIONS
- 300 SECTIONS
- 350 DETAILED SECTIONS
- 400 DETAILED PLANS
- 500 STAIR DETAILS
- 600 CONSTRUCTION DETAILS
- 700 METALWORK DETAILS
- 800 SERVICES DETAILS
- 900 SCHEDULES

DRAWING ISSUE / REVISION

1, 2, 3... DRAWING ISSUE / REVISION

ORIGINAL IN COLOUR

© WILEY & CO PTY LTD

ABN 40 010 604 869

This document is the property of Wiley & Co Pty Ltd and is copyright. The subject matter of it is confidential. Do not use, reproduce, copy or disclose except with and only to the extent of the prior written consent of Wiley & Co Pty Ltd. Persons receiving this document are responsible for restricting disclosure as stated above.

03/09/18	4	ISSUE FOR DA MOD	DT
21/08/18	3	ISSUE FOR CLIENT APPROVAL	DT
20/08/18	2	FRONT BUILDING, REAR EXTENSION AND BLD 34 REDESIGN	DT
15/06/18	1	INITIAL ISSUE	JNM
Date	Issue	Amendment	Init

Brisbane Kuala Lumpur Melbourne Sydney Toowoomba
www.wiley.com.au
connect@wiley.com.au
1300 385 988

WILEY

Project



TEYS AUSTRALIA - STAGE 2
COLD MEAT PROJECT
WAGGA WAGGA, NSW

Drawing Title
ASRS BUILDING COVER
PAGE

Scale

Drawn DT Date JUN 2018

Project No. W21206 Bldg No. 30

Drawing No. Issue

30A000 - 4

PRELIMINARY