



Source: <http://maps.six.nsw.gov.au/>



STATEMENT OF ENVIRONMENTAL EFFECTS
Spice Den Restaurant, Santai, 9-13 Dianella Drive, Casuarina

FIGURE 1
Location

Prepared For - Kings Beach (No 2) Pty Ltd



Source: <http://maps.six.nsw.gov.au/>

STATEMENT OF ENVIRONMENTAL EFFECTS
Spice Den Restaurant, Santai, 9-13 Dianella Drive, Casuarina

FIGURE 2
SP 77971

Prepared For - Kings Beach (No 2) Pty Ltd

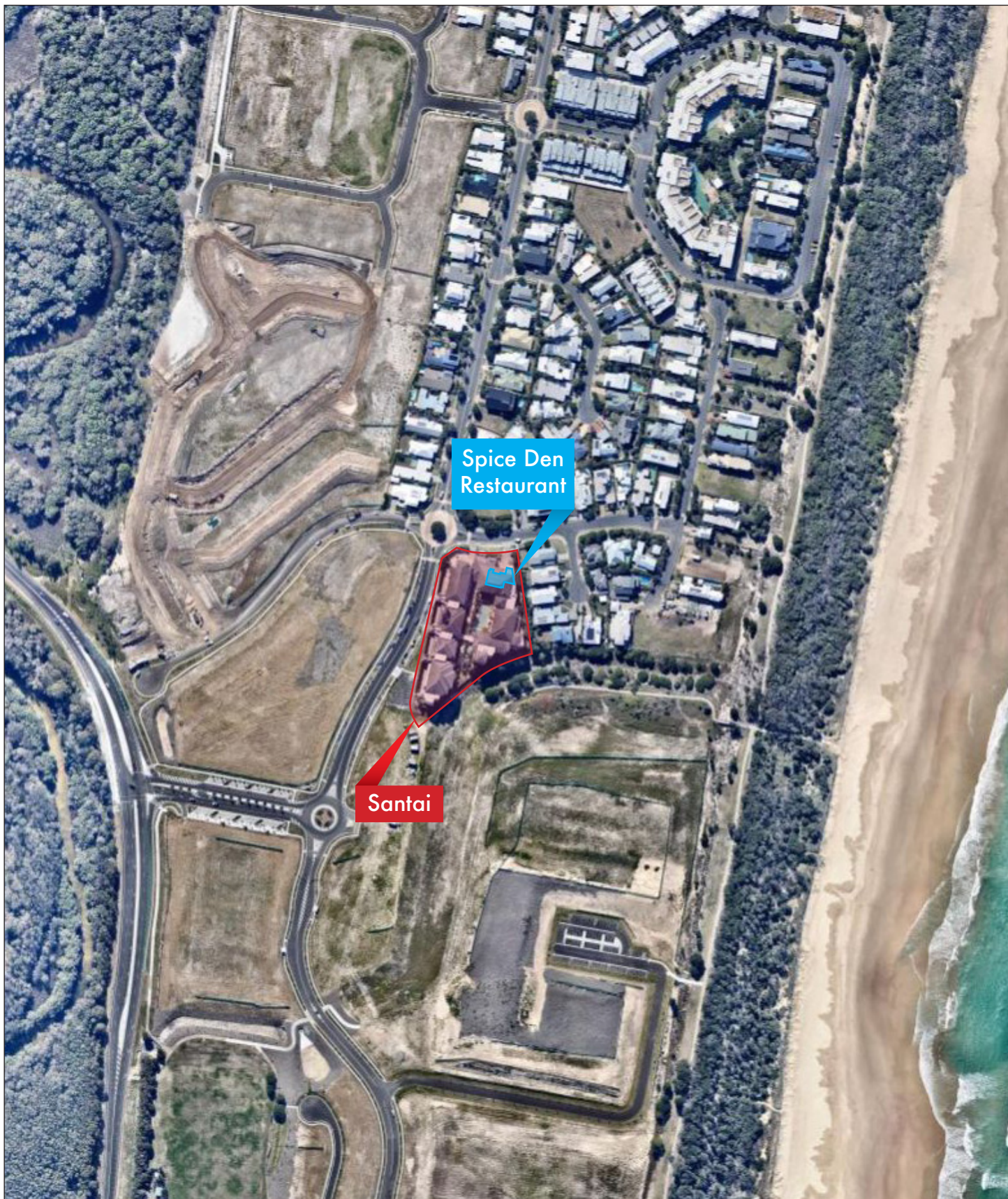


Source: NearMap 2014

STATEMENT OF ENVIRONMENTAL EFFECTS
Spice Den Restaurant, Santai, 9-13 Dianella Drive, Casuarina

FIGURE 3A
Aerial Photo - Detail

Prepared For - Kings Beach (No 2) Pty Ltd

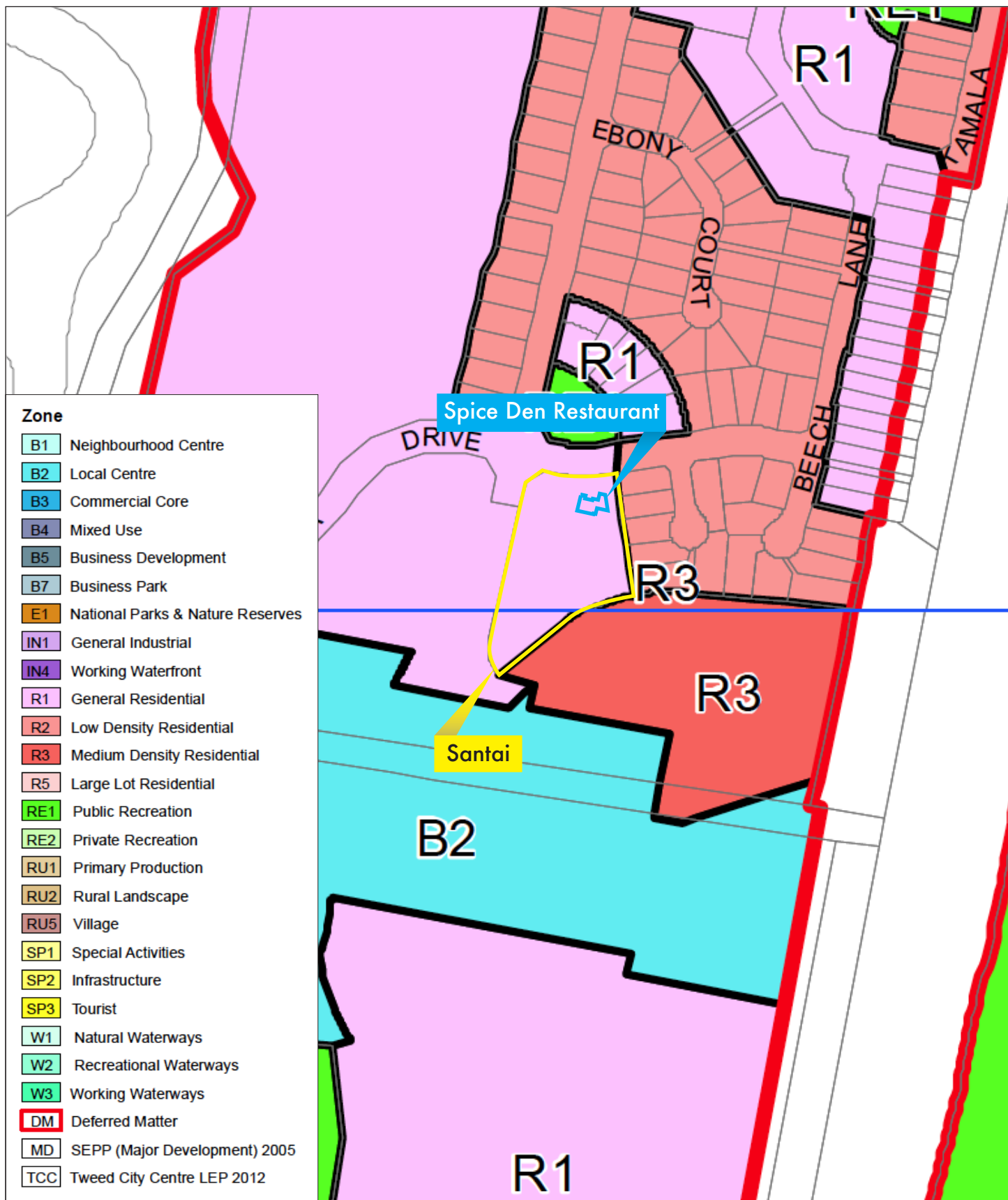


Source: NearMap 2014

STATEMENT OF ENVIRONMENTAL EFFECTS
Spice Den Restaurant, Santai, 9-13 Dianella Drive, Casuarina

FIGURE 3B
Aerial Photo - Wider Area

Prepared For - Kings Beach (No 2) Pty Ltd



STATEMENT OF ENVIRONMENTAL EFFECTS
 Spice Den Restaurant, Santai, 9-13 Dianella Drive, Casuarina

FIGURE 4
 Zoning Map - Tweed LEP 2014

Prepared For - Kings Beach (No 2) Pty Ltd